



Validation of Carbon Trace Gas Profile Retrievals from the NOAA-Unique Combined Atmospheric Processing System for the Cross-Track Infrared Sounder

Nicholas R Nalli, Changyi Tan, Juying Warner, Murty Divakarla, Antonia Gambacorta, Michael Wilson, Tong Zhu, Tianyuan Wang, Zigang Wei, Ken Pryor, et al.

► To cite this version:

Nicholas R Nalli, Changyi Tan, Juying Warner, Murty Divakarla, Antonia Gambacorta, et al.. Validation of Carbon Trace Gas Profile Retrievals from the NOAA-Unique Combined Atmospheric Processing System for the Cross-Track Infrared Sounder. Remote Sensing, 2020, 10.3390/rs12193245 . hal-03020825

HAL Id: hal-03020825

<https://hal.sorbonne-universite.fr/hal-03020825>

Submitted on 24 Nov 2020

HAL is a multi-disciplinary open access archive for the deposit and dissemination of scientific research documents, whether they are published or not. The documents may come from teaching and research institutions in France or abroad, or from public or private research centers.

L'archive ouverte pluridisciplinaire **HAL**, est destinée au dépôt et à la diffusion de documents scientifiques de niveau recherche, publiés ou non, émanant des établissements d'enseignement et de recherche français ou étrangers, des laboratoires publics ou privés.



Article

Validation of Carbon Trace Gas Profile Retrievals from the NOAA-Unique Combined Atmospheric Processing System for the Cross-Track Infrared Sounder

Nicholas R. Nalli ^{1,*}, Changyi Tan ¹, Juying Warner ², Murty Divakarla ¹, Antonia Gambacorta ³, Michael Wilson ¹, Tong Zhu ¹, Tianyuan Wang ¹, Zigang Wei ¹, Ken Pryor ⁴, Satya Kalluri ⁴, Lihang Zhou ⁵, Colm Sweeney ⁶, Bianca C. Baier ^{6,7}, Kathryn McKain ^{6,7}, Debra Wunch ⁸, Nicholas M. Deutscher ⁹, Frank Hase ¹⁰, Laura T. Iraci ¹¹, Rigel Kivi ¹², Isamu Morino ¹³, Justus Notholt ¹⁴, Hirofumi Ohyama ¹³, David F. Pollard ¹⁵, Yao Té ¹⁶, Voltaire A. Velazco ⁹, Thorsten Warneke ¹⁴, Ralf Sussmann ¹⁷ and Markus Rettinger ¹⁷

- ¹ IMSG, Inc. at NOAA/NESDIS Center for Satellite Applications and Research (STAR), College Park, MD 20740, USA; Changyi.Tan@noaa.gov (C.T.); Murty.Divakarla@noaa.gov (M.D.); Michael.Wilson@noaa.gov (M.W.); Tong.Zhu@noaa.gov (T.Z.); Tianyuan.Wang@noaa.gov (T.W.); Zigang.Wei@noaa.gov (Z.W.)
- ² UMD Department of Atmospheric and Oceanic Science, College Park, MD 20740, USA; juying@atmos.umd.edu
- ³ NASA Goddard Space Flight Center, Climate and Radiation Laboratory, Greenbelt, MD 20771, USA; antonia.gambacorta@nasa.gov
- ⁴ NOAA/NESDIS/STAR, College Park, MD 20740, USA; Ken.Pryor@noaa.gov (K.P.); Satya.Kalluri@noaa.gov (S.K.)
- ⁵ NOAA JPSS Program Office, Lanham, MD 20706, USA; Lihang.Zhou@noaa.gov
- ⁶ NOAA Global Monitoring Laboratory (GML), Boulder, CO 80305-3328, USA; Colm.Sweeney@noaa.gov (C.S.); Bianca.Baier@noaa.gov (B.C.B.); kathryn.mckain@noaa.gov (K.M.)
- ⁷ Cooperative Institute for Research in Environmental Sciences, University of Colorado Boulder, Boulder, CO 80305, USA
- ⁸ Department of Physics, University of Toronto, Toronto, ON M5S 1A7, Canada; dwunch@atmos.physics.utoronto.ca
- ⁹ Centre for Atmospheric Chemistry, School of Earth, Atmospheric and Life Sciences, University of Wollongong, Wollongong, NSW 2522, Australia; ndeutsch@uow.edu.au (N.M.D.); voltaire@uow.edu.au (V.A.V.)
- ¹⁰ Institute of Meteorology and Climate Research (IMK-ASF), Karlsruhe Institute of Technology, 76137 Karlsruhe, Germany; frank.hase@kit.edu
- ¹¹ NASA Ames Research Center, Atmospheric Science Branch, Mail Stop 245-5, Moffett Field, CA 94035, USA; laura.t.iraci@nasa.gov
- ¹² Finnish Meteorological Institute, Space and Earth Observation Centre, Tähteläntie 62, 99600 Sodankylä, Finland; Rigel.Kivi@fmi.fi
- ¹³ Satellite Remote Sensing Section and Satellite Observation Center, National Institute for Environmental Studies (NIES), Onogawa 16-2, Tsukuba, Ibaraki 305-8506, Japan; morino@nies.go.jp (I.M.); oyama.hirofumi@nies.go.jp (H.O.)
- ¹⁴ Institute of Environmental Physics, University of Bremen, 28195 Bremen, Germany; jnotholt@iup.physik.uni-bremen.de (J.N.); warneke@iup.physik.uni-bremen.de (T.W.)
- ¹⁵ National Institute of Water and Atmospheric Research Ltd., Hamilton 3216, New Zealand; Dave.Pollard@niwa.co.nz
- ¹⁶ Laboratoire d'Etudes du Rayonnement et de la Matière en Astrophysique et Atmosphères (LERMA-IPSL), Sorbonne Université, CNRS, Observatoire de Paris, PSL Université, 75005 Paris, France; yao-veng.te@upmc.fr
- ¹⁷ Karlsruhe Institute of Technology, IMK-IFU, 82467 Garmisch-Partenkirchen, Germany; ralf.sussmann@kit.edu (R.S.); markus.rettinger@kit.edu (M.R.)

* Correspondence: Nick.Nalli@noaa.gov

Received: 24 August 2020; Accepted: 29 September 2020; Published: 6 October 2020



Abstract: This paper provides an overview of the validation of National Oceanic and Atmospheric Administration (NOAA) operational retrievals of atmospheric carbon trace gas profiles, specifically carbon monoxide (CO), methane (CH₄) and carbon dioxide (CO₂), from the NOAA-Unique Combined Atmospheric Processing System (NUCAPS), a NOAA enterprise algorithm that retrieves atmospheric profile environmental data records (EDRs) under global non-precipitating (clear to partly cloudy) conditions. Vertical information about atmospheric trace gases is obtained from the Cross-track Infrared Sounder (CrIS), an infrared Fourier transform spectrometer that measures high resolution Earth radiance spectra from NOAA operational low earth orbit (LEO) satellites, including the Suomi National Polar-orbiting Partnership (SNPP) and follow-on Joint Polar Satellite System (JPSS) series beginning with NOAA-20. The NUCAPS CO, CH₄, and CO₂ profile EDRs are rigorously validated in this paper using well-established independent truth datasets, namely total column data from ground-based Total Carbon Column Observing Network (TCCON) sites, and in situ vertical profile data obtained from aircraft and balloon platforms via the NASA Atmospheric Tomography (ATom) mission and NOAA AirCore sampler, respectively. Statistical analyses using these datasets demonstrate that the NUCAPS carbon gas profile EDRs generally meet JPSS Level 1 global performance requirements, with the absolute accuracy and precision of CO 5% and 15%, respectively, in layers where CrIS has vertical sensitivity; CH₄ and CO₂ product accuracies are both found to be within $\pm 1\%$, with precisions of $\approx 1.5\%$ and $\lesssim 0.5\%$, respectively, throughout the tropospheric column.

Keywords: satellite cal/val; error analysis; greenhouse gases; carbon monoxide; methane; carbon dioxide; trace gas; remote sensing; retrieval algorithms; satellite applications

1. Introduction

The U.S. National Oceanic and Atmospheric Administration (NOAA) Joint Polar Satellite System (JPSS) is a NOAA-operational low earth orbit (LEO) satellite series that features the hyperspectral infrared (IR) Cross-track Infrared Sounder (CrIS) [1] and Advanced Technology Microwave Sounder (ATMS) [2] systems. Four satellites are planned to fly in the same orbit over the next two decades beginning with the NOAA-20 satellite (which was referred to as JPSS-1 or J-1 prior to launch in late 2017), and was preceded by the Suomi National Polar-orbiting Partnership (SNPP) satellite launched in late 2011. The CrIS instrument is an advanced IR Fourier transform spectrometer (FTS) that obtains sensor data records (SDRs) consisting of well-calibrated IR Earth emission spectra over three bands (longwave 650–1095 cm^{−1}, midwave 1210–1750 cm^{−1}, and shortwave 2155–2550 cm^{−1}), with 2211 channels in full spectral-resolution (FSR) mode (maximum optical path difference of 0.8 cm for all three bands and spectral resolution $\Delta\nu = 0.625$ cm^{−1}, with 713, 865 and 633 channels in the longwave, midwave and shortwave bands, respectively) [3]. The CrIS spectra allow for retrieval of atmospheric vertical profile environmental data records (EDRs) with the best possible vertical resolution (≈ 2 –7 km for temperature and water vapor throughout the troposphere) comparable to predecessor sounding systems, namely the European Organisation for the Exploitation of Meteorological Satellites (EUMETSAT) Metop-series Infrared Atmospheric Sounding Interferometer (IASI) [4,5] and the National Aeronautics and Space Administration (NASA) EOS-Aqua Atmospheric Infrared Sounder (AIRS) [6,7]. The NOAA-operational EDR retrieval algorithm for operational hyperspectral thermal IR sounders (viz., CrIS and IASI) is the NOAA-Unique Combined Atmospheric Processing System (NUCAPS) [8,9]. The NUCAPS algorithm is based upon the heritage

methodology developed for the EOS-Aqua AIRS and is a modular implementation of the multi-step NASA AIRS Science Team retrieval algorithm Version 5 [10,11].

NUCAPS SNPP previously ran on CrIS spectra with reduced resolution in the midwave and shortwave bands (1.25 cm^{-1} and 2.5 cm^{-1} , respectively) due to truncated interferograms in those bands during operational processing [3]; these reduced-resolution spectra have been referred to as “nominal” or “normal” resolution as this was the originally planned operational resolution of the CrIS SDR. However, offline production of CrIS FSR began in December 2014 [3,12], with operational Interface Data Processing Segment production starting in March 2017. The move to FSR was motivated in part by a demonstration study showing the impact of the CrIS spectral resolution on the retrieval of the carbon monoxide EDR [13]. Given that the CrIS FSR mode has been operational since then (i.e., for the remainder of the SNPP lifetime as well as the follow-on JPSS satellite series, beginning with NOAA-20), the NUCAPS system was upgraded to run in FSR mode using the Stand-Alone Radiative Transfer Algorithm (SARTA) [14] delivered by the University of Maryland Baltimore County (UMBC). For more details on the NUCAPS algorithm theoretical basis and user applications, the reader is referred to other papers [9,10] and/or the Algorithm Theoretical Basis Document (ATBD) available online [15].

The Earth emission spectra (i.e., SDRs) measured by CrIS, IASI and AIRS contain information about the atmospheric temperature (T) and moisture (q) profiles, along with trace gases including O_3 , CO , CH_4 , CO_2 , SO_2 , HNO_3 and N_2O . The NUCAPS physical retrieval module [15] retrieves these individual parameters in a sequential fashion, using channels rigorously determined to be sensitive to each parameter [16], beginning with cloud-cleared radiance spectra (i.e., clear-column IR spectra which are derived with the help of the collocated ATMS data) [10], followed by T , q , ozone (O_3) and the remaining trace gases, with the results output on the radiative transfer model (RTM) (or radiative transfer algorithm, RTA) 100 layer grid (T output is on layer boundaries or “levels”). The NUCAPS algorithm solves for the trace gases in an effort to optimize the retrieved thermodynamic (T and q) profile EDRs [9], but the long-term investments in the CrIS and IASI sounders onboard future operational NOAA and EUMETSAT LEO satellite missions (as indicated above) has motivated the exploitation of these space assets for the routine production of the carbon trace gas EDRs, namely carbon monoxide (CO) [17,18], methane (CH_4) [19], and carbon dioxide (CO_2) [20].

The validation of the NUCAPS T , q and O_3 profile EDRs with respect to high-quality reference datasets has been previously reported in Nalli et al. [21,22], where it was demonstrated that the SNPP EDRs meet JPSS Level 1 requirements; additional independent assessments of the SNPP T and q EDRs versus other reference datasets have been reported elsewhere [23,24]. Similar performances have been established for the EDR products from the NOAA-20 satellite, launched since the original SNPP validation effort. Since that time, the NUCAPS algorithm development team has focused on improvements to the operational carbon trace gas EDR products mentioned above. The improvements include updated a priori profiles (based on current zonal climatologies) and RTA tuning (empirically removing residual biases between the model and observations), along with optimized quality assurance (QA) flags (based upon the algorithm chi-square, χ^2 , degrees-of-freedom, and other quality measures). Thus, in this paper we focus our attention on validating the operational NUCAPS (offline v2.8) CO , CH_4 and CO_2 trace gas EDRs; additional details on the NUCAPS carbon trace gas retrievals can be found in a forthcoming paper (Warner et al., manuscript in prep for Atmos. Chem. Phys.).

2. Methodology

Carbon trace gas EDR validation was a new requirement within the JPSS calibration/validation (cal/val) program [25] beginning with the transition to the full spectral-resolution (FSR) CrIS NUCAPS. The JPSS Level 1 requirements for carbon trace gas profile EDRs are given in Table 1, which are defined for the global ensemble of total column, cloud-cleared cases. These requirements serve as the program metrics by which the system is considered to have reached Validated Maturity and meets mission requirements.

Table 1. JPSS Level 1 Requirements * for (CrIS) Carbon Trace Gas Column EDRs.

Statistic	Threshold	Objective
Carbon Monoxide EDR		
CO Precision [†]	15%	3%
CO Accuracy [‡]	±5%	±5%
Methane EDR		
CH ₄ Precision	1% (20 ppbv)	N/A
CH ₄ Accuracy	±4% (80 ppbv)	N/A
Carbon Dioxide EDR		
CO ₂ Precision	0.5% (2 ppmv)	1.05 to 1.4 ppmv
CO ₂ Accuracy	±1% (4 ppmv)	N/A

* Source: Joint Polar Satellite System (JPSS) Program Level 1 Requirements Supplement—Final, Version 2.10, 25 June 2014, JPSS-REQ-1002, NOAA/NESDIS, pp. 39–41, 98; “Level 1” is a programmatic term that refers to the “highest level” program requirement; [†] Measurement precision is defined as the standard deviation (one sigma) of the sample measurement errors; [‡] Measurement accuracy is defined as the magnitude of the mean measurement error.

Satellite sounder validation methodology has been well-established for T , q and O_3 profile EDRs within previous validation work, with the various coarse-layer statistical uncertainty characterizations conducted relative to baseline reference datasets (i.e., “truth”) roughly classified within a “hierarchy” [26]. Profile statistics for layer gas concentrations are defined in terms of fractional errors, including systemic (i.e., bias or “accuracy”), random (i.e., 1σ variability or “precision”), and total combined error (i.e., root mean square error, RMSE). For carbon trace gases we have adopted a similar hierarchical approach based upon available reference datasets, consisting of (1) numerical model global comparisons, (2) satellite EDR intercomparisons, (3) surface-based observing network assessments, and (4) intensive field campaign in situ data assessments. Those at the base of the hierarchy may be readily employed during the early cal/val stages (or anytime thereafter) of a satellite’s lifetime, whereas those near the top are employed during later stages. These are briefly overviewed below.

Numerical model output (analysis and/or forecast interpolated to NUCAPS footprints) enables the rapid comparison with large, global datasets obtained during “Focus Days” (i.e., days selected for the acquisition of global SDRs that are used for retrieving EDRs using the latest versions of offline code) and as such are extremely useful for early evaluation of the algorithm and identifying gross problem areas [27]. Numerical models used for such comparisons include the European Center for Medium-Range Weather Forecast (ECMWF), the NOAA CarbonTracker [28], and the Copernicus Atmosphere Monitoring Service (CAMS) [29]. Such analyses are useful in identifying regional or spectral biases. However, dynamical models (e.g., ECMWF) do not constitute independent correlative data given that they assimilate radiances, and generally do not model chemistry and/or surface fluxes.

Trace gas EDRs obtained from other satellite sensors or algorithms provide quasi-independent observations for global intercomparisons. Like numerical model comparisons, this approach also allows for the acquisition of large, global data samples that can facilitate early consistency checks. In addition, such data (depending on the sensor/algorithm) may be more reliable than model analyses, especially in the case of previously validated EDR products, thus providing additional global confidence. AIRS is extremely useful for this purpose given it is a mature, high-resolution IR sounder that runs an end-to-end algorithm similar to NUCAPS, with the Aqua satellite flying in the same 01:30, 13:30 local equator crossing time orbit. Other satellite sounder EDR datasets include Tropospheric Monitoring Instrument (TROPOMI) onboard the Copernicus Sentinel-5, the NASA Orbiting Carbon Observatory (OCO-2), Greenhouse gases Observing Satellite (GOSAT), and the Aura Microwave Limb Sounder (MLS). However, a limitation of these data for validation is that they may possess similar retrieval error characteristics (in the case of AIRS [27]) or different vertical sensitivity, and thus ultimately would require proper treatment of each sensor’s averaging kernels [30] (cf. Appendix A).

Ground-based, remotely sensed observations obtained periodically from surface-based observing networks provide independent truth datasets with a global distribution reasonably representing global latitude zones roughly analogous to radiosonde observations (RAOB) for temperature and moisture. The most notable example of such a dataset is the Total Carbon Column Observing Network (TCCON) [31], a ground-based network of uplooking solar-spectrum FTS instruments that obtain total column measurements of trace gases (discussed more in Section 3.1). A newer source of in situ data are vertical profiles obtained from the balloon-borne AirCore sampling system [32,33]. NUCAPS EDR collocations with these ground-based networks thus provide independent datasets for statistical assessments [26]. However, limitations in these datasets include the time latencies needed for acquiring reasonable collocation sample sizes, uncertainties in unit conversions, and different sensitivities to atmospheric layers.

At the top of the validation data hierarchy are intensive aircraft campaigns that provide episodic, but generally comprehensive sets of in situ and remotely sensed vertical profile data from multiple ascents and descents of dedicated aircraft flying over a specified region. Aircraft campaigns thus allow for detailed performance specification over regions of interest. Examples of trace gas campaigns suitable for SNPP validation include the Atmospheric Tomography (ATom) mission [34] (discussed in Section 3.3) and, previously, the HIAPER Pole-to-Pole Observations (HIPPO) [35] campaigns. The specific datasets used for NUCAPS trace gas validation are detailed in Section 3 below.

3. Data

Following the hierarchical approach described in Section 2, multiple complementary correlative truth datasets are relied upon to provide independent measurements for validation. We have leveraged three datasets for this purpose, namely uplooking spectrometer total-column data from TCCON, balloon-borne profiles from AirCore, and finally aircraft in situ vertical profile data from ATom. Existing satellite EDR datasets from other platforms (viz., Aqua AIRS and TROPOMI) have also been utilized for global intercomparisons to demonstrate the NUCAPS products look qualitatively reasonable and geographically consistent (Warner et al., manuscript in prep for Atmos. Chem. Phys.). Specifics of the layer and unit conversions required for conducting quantitative statistical assessments of NUCAPS (Section 4) are explicitly described for completeness and reproducibility.

3.1. TCCON

The Total Carbon Column Observing Network (TCCON) [31] is a ground-based network of Bruker 125HR uplooking solar-spectrum FTS that obtain spectral measurements in the near-IR region that encompasses the CO, CH₄, CO₂, N₂O, and O₂ absorption bands [31], thus comprising an independent data source for validating NUCAPS. The interferograms are collected with a 45 cm optical path difference (45 cm was chosen deliberately to optimize retrievals of CO₂ in the 6000 cm^{−1} band) yielding a spectral resolution of ≈ 0.02 cm^{−1}. The total column retrievals of these trace gases is achieved via a retrieval algorithm (called GFIT) that includes both the forward and inverse model calculations. The inverse algorithm employs least-squares fitting by scaling an a priori [31]. The a priori profiles used in the GFIT system, x_0 , were obtained from the NOAA National Centers for Environmental Prediction, National Center for Atmospheric Research (NCEP/NCAR) analysis. TCCON station data can facilitate intercomparisons (acting as a “transfer-standard”) between retrievals from multiple satellites.

The total column trace gases retrieved by TCCON are in dry mole fractions (DMF), whereas the NUCAPS algorithm retrieves trace gas layer abundances (in molecules/cm²) on the 100 RTA model layers. Thus, a conversion scheme must be implemented. Furthermore, because TCCON and NUCAPS have fundamental differences in vertical sensitivity, it is desirable that the TCCON column averaging kernels (AKs) be utilized in the integration of the NUCAPS observation. For explicitness, the conversion scheme and application of TCCON column AKs in the integration of NUCAPS retrieved trace gas profile EDRs are detailed in Appendix A.

In practice the column AKs are dependent only on the solar zenith angle, θ_{\odot} , of the measurements [31]. Thus a single set of column AKs from the Lamont Site, $\mathbf{a}(\theta_{\odot})$, are provided for gridded values of $\theta_{\odot} = 10^{\circ}, 15^{\circ}, \dots, 85^{\circ}$ (shown in Figure 1), which can then be interpolated to the solar zenith angle of the measurement. From Figure 1 a fundamental limitation in the utility of TCCON data for IR sounder (e.g., NUCAPS) validation becomes evident, namely the TCCON tendency for higher sensitivity in the upper layers of the atmosphere, except at larger θ_{\odot} for CH_4 and CO_2 . The TCCON vertical sensitivity must be taken into account when comparing against the sounder retrieved EDRs, which typically have peak sensitivity in the mid-troposphere (discussed more in Section 4).

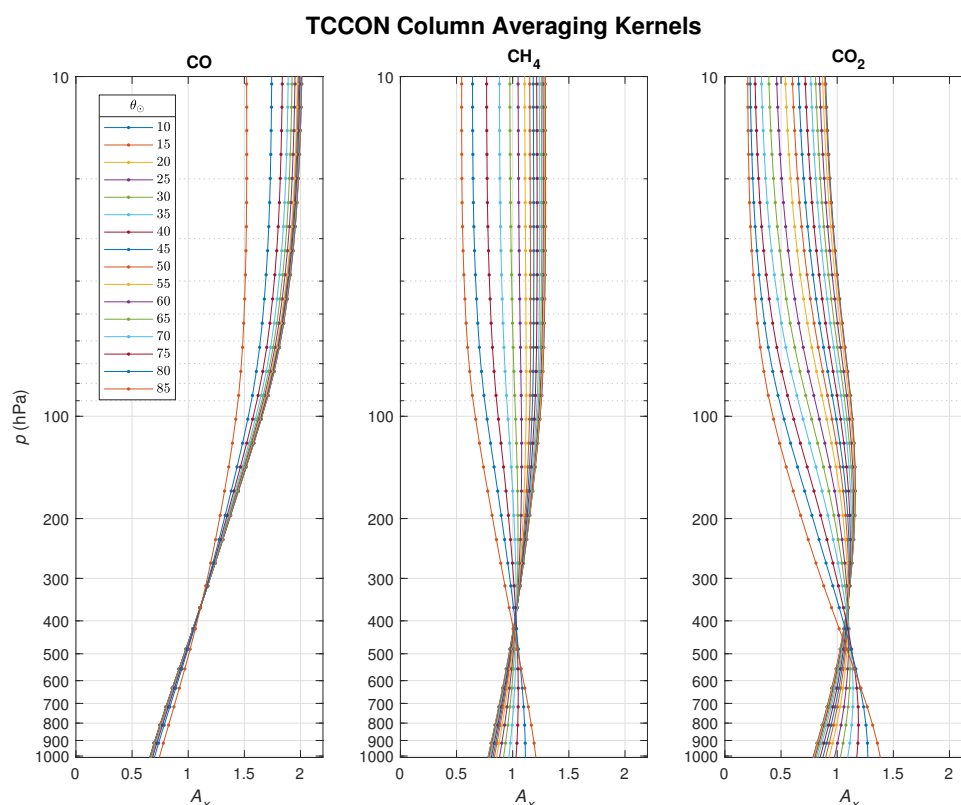


Figure 1. TCCON tropospheric column AKs [31] as a function of solar zenith angle, θ_{\odot} , for (left) carbon monoxide, (middle) methane, and (right) carbon dioxide.

3.2. AirCore

The NOAA Global Monitoring Laboratory (GML) AirCore sampling system [32,33,36] is an innovative in situ sampling approach that employs long, coated stainless-steel tubes to collect a sample of the ambient atmospheric air column (i.e., a “core” analogous to an ice-core). The tubes are open at one end, filled with a “fill gas” (with known levels of CO_2 , CH_4 , and CO), and configured in a tight coil so that they can be deployed upon a suitable platform, notably helium or hydrogen-filled 3000 g balloons. The AirCore is evacuated upon balloon-borne ascent and then fills with ambient air upon parachuted descent. However, unlike a radiosonde, the sampling package is tracked during its return from ≈ 30 km altitude to the surface (e.g., via a parachute in the case of a balloon) and subsequently sealed and recovered, where it can then be brought back to the lab for analysis using a laboratory-grade trace gas analyzer (e.g., Picarro, Inc.). AirCore thus allows in situ measurement of mole fraction samples for various trace gases (e.g., CO , CH_4 and CO_2) without requiring an aircraft or onboard data transmission system (e.g., as with an ozonesonde). A distinct advantages of AirCore is the capability for multiple deployments with a distributed geographic coverage over land. In this capacity AirCore

has promise to be a surface-based network like TCCON, albeit with calibrated, high-resolution profiles measured in samples that survey $\geq 98\%$ column, somewhat analogous to an ozonesonde network.

Because the length scale of diffusion is <0.5 m over the time it takes to analyze an AirCore sample (≈ 4 h), >100 discrete samples can be measured in a 100 m AirCore tube. The resultant profile resolution surpasses the 100-layer forward model grid employed in the retrieval. Thus we follow the approach documented in Nalli et al. [26] (Appendix B op. cit.), performing molecular-integrations of column densities for each trace gas constituent, allowing us to redivide the atmospheric path to the 101 layer boundaries, which then allows the computation of the effective layer values in a physically rigorous manner. The conversions to NUCAPS RTA layer abundances therefore requires concurrent measurements of temperature and water vapor, which are obtained from a radiosonde package flown on the AirCore payload.

3.3. ATom

The Atmospheric Tomography (ATom) mission [34] deployed an extensive gas and aerosol measurement payload on the NASA DC-8 aircraft for global-scale sampling of the atmosphere, profiling continuously from 0.2–12 km altitude. Flights occurred during all four seasons, originating from the Armstrong Flight Research Center in Palmdale, California, USA, flying north to the western Arctic, south to the South Pacific, east to the Atlantic, north to Greenland, before returning to California across central North America or the North American Arctic. Figure 2 shows the flight paths for the 2016–2018 sampling periods (ATom-1, -2, and -4). ATom-1 and -2 data were first used for SNPP NUCAPS development and validation prior to our J-1 validation effort; we subsequently obtained ATom-4 data for NOAA-20 validation (note that ATom-3 was still pre NOAA-20), and simply combined it with our existing ATom-1 and -2 collocation data for SNPP going forward.

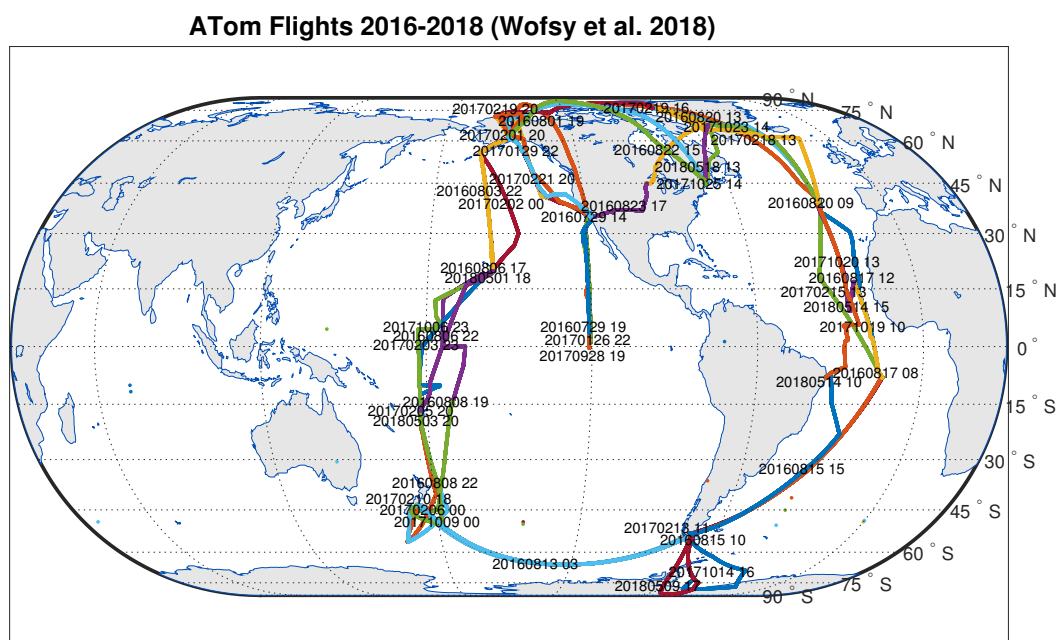


Figure 2. Atmospheric Tomography (ATom) flights for the period of 2016–2018 (ATom-1, -2, and -4) [34]; individual flights are distinguished from one another using different colors. Map projection is equal-area.

During ATom flights, the aircraft repeatedly ascended to 10–12 km, leveled-off, then descended to different heights at different rates. The raw aircraft data are recorded as a function of time, with reported altitudes featuring small-to-medium scale fluctuations throughout any given flight. Correlative truth profiles must thus be extracted only from smooth, continuous ascent/descents, disregarding small-scale altitude fluctuations and periods when the aircraft leveled off. Through trial and error, we devised an approach for extracting these profiles from the flight data based upon three

criteria, namely the ascent/descent rate, $\Delta z/\Delta t$ (to find actual ascents/descents), the time difference between successive ascending/descending profiles (given that level-off periods separate the ascents and descents), and the thickness of the interquartile range covered by the profile (to ensure reasonably complete tropospheric profiles).

In this work we use the NOAA Picarro G2401-m in situ measurements of CO, CH₄ and CO₂ from ATom. More information on the ATom NOAA Picarro data can be found at https://espo.nasa.gov/atom/instrument/NOAA_Picarro. Because the 10 s average ATom Picarro data are given in mixing ratios in ppm (or dry air mole fractions) at a vertical resolution comparable to the RTM/RTA layering, we simply interpolate these data to the RTA levels (layer boundaries), then convert to layer abundances (molecules/cm²) for the statistical assessment of the NUCAPS EDRs. This is in contrast to the molecule-conservation approach required for high-resolution data (e.g., AirCore) as briefly alluded to in the previous section.

Relevant to the JPSS requirements, the ATom statistics on total columns in Section 4 are computed as follows. NUCAPS performs retrievals of CO and CH₄ concentrations (as well as H₂O and O₃) in layer abundance space (molecules/cm²). Therefore column assessments for CO and CH₄ are performed for total column quantities by integrating the NUCAPS retrieved layer abundances; CO₂, on the other hand, is retrieved in mixing ratios (ppm), and thus we need only take the mean for the total column (CO₂ is treated differently given that CO₂ channels are used first in the physical retrieval steps for the *T* profile retrievals). The column abundance for atmospheric species *X* (viz., CO and CH₄) is defined as the vertical integral of the number density N_x from the top measurement z_t to the measurement level height z

$$\Sigma_z(X) \equiv \int_{z_t}^z N_x(z') dz'. \quad (1)$$

For the NUCAPS retrieval on the RTA layers, the total column may be computed from the finite difference formula [26]

$$\Sigma_{z_s}(X) \approx \mathcal{F}_{BL} \bar{N}_{x,L_b} \delta z_{L_b} + \sum_L^{L_b-1} \bar{N}_{x,L} \delta z_L, \quad (2)$$

where z_s is the surface altitude and the quantities $\bar{N}_{x,L} \delta z_L$ are the NUCAPS retrieved layer abundance for gas species *x* and RTA layer *L* (of thickness δz_L), L_b is the bottom partial layer, and \mathcal{F}_{BL} is the bottom-layer multiplier factor defined as

$$\mathcal{F}_{BL} \equiv \frac{p_s - P_{l_b-1}}{P_{l_b} - P_{l_b-1}}, \quad (3)$$

where p_s is the surface level (boundary) pressure, P_{l_b} and P_{l_b-1} are the bottom-layer boundary pressures (i.e., the pressures of the bottom two levels, l_b and $l_b - 1$).

3.4. NUCAPS Retrievals

The NUCAPS retrieval sensitivity to state profile parameters (e.g., trace gas concentration) can be inferred from the retrieval AKs. The AK matrix is theoretically defined as $\mathbf{A} \equiv \partial \hat{\mathbf{x}}/\partial \mathbf{x}$ [37–40], where \mathbf{A} is a square matrix dimensioned $m \times m$, m being the number of layers for the retrieved (i.e., estimated) and “true” (correlative) profiles, $\hat{\mathbf{x}}$ and \mathbf{x} , respectively. Note that the retrieval $\hat{\mathbf{x}}$ is related to \mathbf{x} via the measurement equation $\hat{\mathbf{x}} = I[F(\mathbf{x}, \mathbf{b}), \mathbf{b}, \mathbf{c}]$, where F is the forward model with parameters \mathbf{b} (e.g., spectroscopy), and I is the inverse model (i.e., retrieval), with parameters \mathbf{c} not included in F (i.e., unrelated to the measurement) [26,39]. In the case of the NUCAPS algorithm, trapezoidal basis functions are used in the physical retrievals of each parameter (e.g., CO, CH₄, CO₂), and thus the corresponding \mathbf{A} matrices must be transformed to “effective AKs” on the RTA layers, \mathbf{A}_e (dimensioned $n \times n$, where $n \equiv 100 > m$ is the number of RTA layers), the details of which can be found in earlier papers [26,40].

Figure 3 shows zonal-mean NUCAPS effective AKs taken from a global Focus Day (23 January 2020) for the tropics, northern and southern hemisphere (NH and SH) midlatitude, and polar zones. The Focus Day includes on the order of 220,000 NUCAPS retrievals over the entire globe, which, generally speaking, is considered representative of the range of global atmospheric conditions. The plots show the RTA column (or area, i.e., the row-sum along the first dimension) effective AKs for the CO, CH₄, and CO₂ channels [16] (subplots a–c, respectively). It can be seen that the peak sensitivities comprise broad layers. For CO, this roughly spans 600 to 300 hPa and that the peak remains fairly constant from the poles to the tropics. However, sensitivity is markedly less in the polar zones, this related to the lower tropopause, with sensitivity lowest in the SH plausibly due to lower ambient concentrations associated with substantially reduced source regions. There may also be some seasonal variability not accounted for in the Focus Day sample (which was during boreal winter). For CH₄ and CO₂, the peak sensitivities are somewhat lower in magnitude and higher in altitude than CO (≈ 400 –200 hPa and 300–200 hPa, respectively), with the height and sensitivity likewise decreasing with latitude zone.

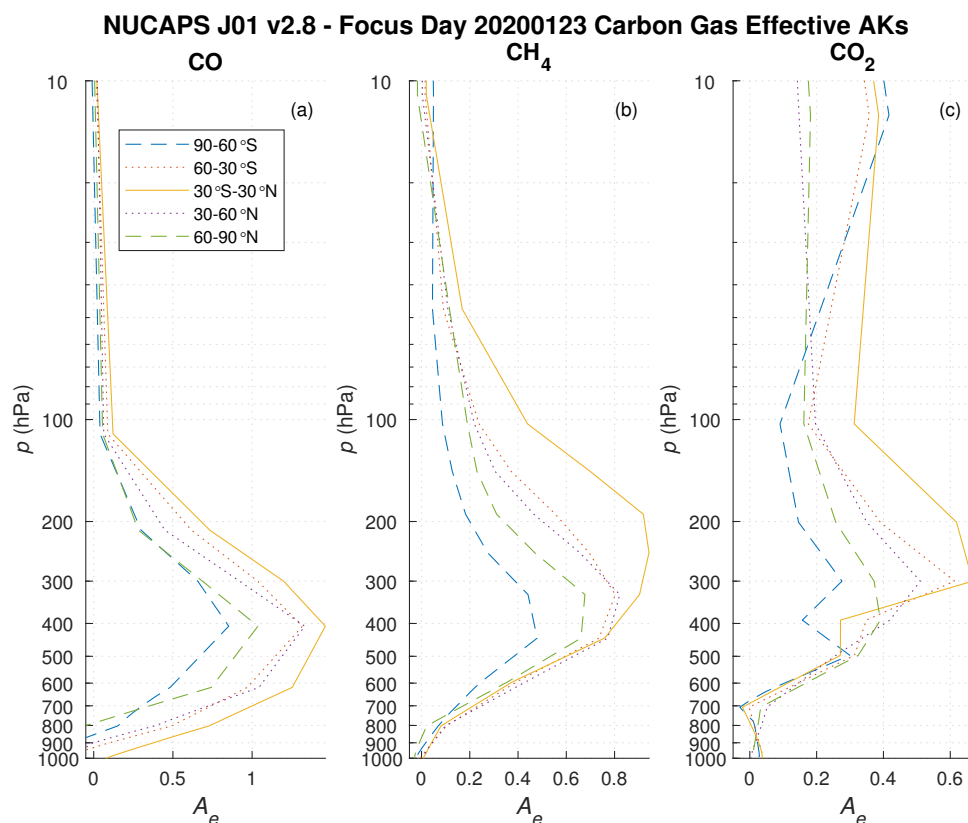


Figure 3. Zonal-mean NUCAPS RTA column (or row-sum) effective averaging kernels A_e for full spectral-resolution NOAA-20 CrIS carbon trace gas retrievals from a global Focus Day, 23 January 2020: (a) carbon monoxide, (b) methane, and (c) carbon dioxide. The solid lines are tropics (30°S to 30°N), dotted lines are midlatitudes (30–60°S and °N) and dashed lines are polar (60–90°S and °N).

The ability of the CrIS sensor to provide information about the trace gas profiles is also demonstrated by considering the NUCAPS algorithm degrees-of-freedom (DoF), defined as the sum of the **A** matrix diagonals, representing the total vertical information content [9]. Figure 4 shows the NUCAPS DoF for CO, CH₄ and CO₂ for the same Focus Day as in Figure 3. DoF for CO are mostly ≥ 1 (i.e., contain ≥ 1 independent pieces of information from the CrIS spectra) for most of the globe equatorward of the polar zones, with the exception of some high altitude locations, whereas areas with DoF ≥ 1 for CH₄ and CO₂ are primarily limited to the tropics (where the tropopause is at a higher altitude). Generally we expect greater retrieval skill in the regions with higher DoF.

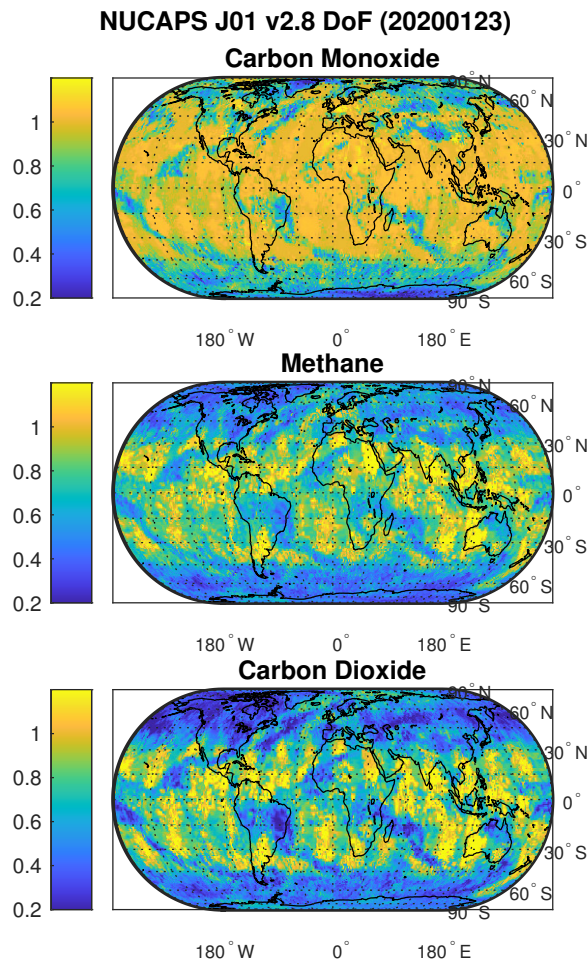


Figure 4. NUCAPS algorithm degrees-of-freedom (DoF) for NOAA-20 carbon trace gas retrievals from a global Focus Day, 23 January 2020: **(top)** carbon monoxide, **(middle)** methane, and **(bottom)** carbon dioxide. Map projections are equal-area.

4. Results and Discussion

In the following sections, the NUCAPS carbon trace gas retrievals are statistically validated versus the collocated baseline datasets described in Sections 3.1–3.3. In these analyses, we apply essentially the same collocation methodology as that used for our earlier ozone profile validation [22], whereby we impose a space-time collocation criterion in an effort to strike a balance between collocation mismatch uncertainty and sample size.

4.1. Statistical Analysis versus TCCON Baseline

For NUCAPS carbon gas validation using TCCON site observations, we ran offline SNPP and NOAA-20 NUCAPS retrievals for 6 global focus days spanning the annual cycle (1 April, 15 June, 20 August, 15 October and 15 December 2018, and 15 February 2019), then collocated the NUCAPS fields-of-regard (FORs, which consist of 3×3 CrIS fields-of-view used for cloud-clearing [9,10]) within $\Delta r \leq 125$ km radius and Δt within ± 2 h of the TCCON measurements. The global focus day runs also allowed for numerical model and satellite EDR comparisons (as discussed in Section 2), but these will be highlighted in a future paper (Warner et al., manuscript in prep for Atmos. Chem. Phys.). Figure 5 shows the locations of TCCON stations with available data that collocated with the SNPP data (NUCAPS QA-accepted cases) during these focus days.

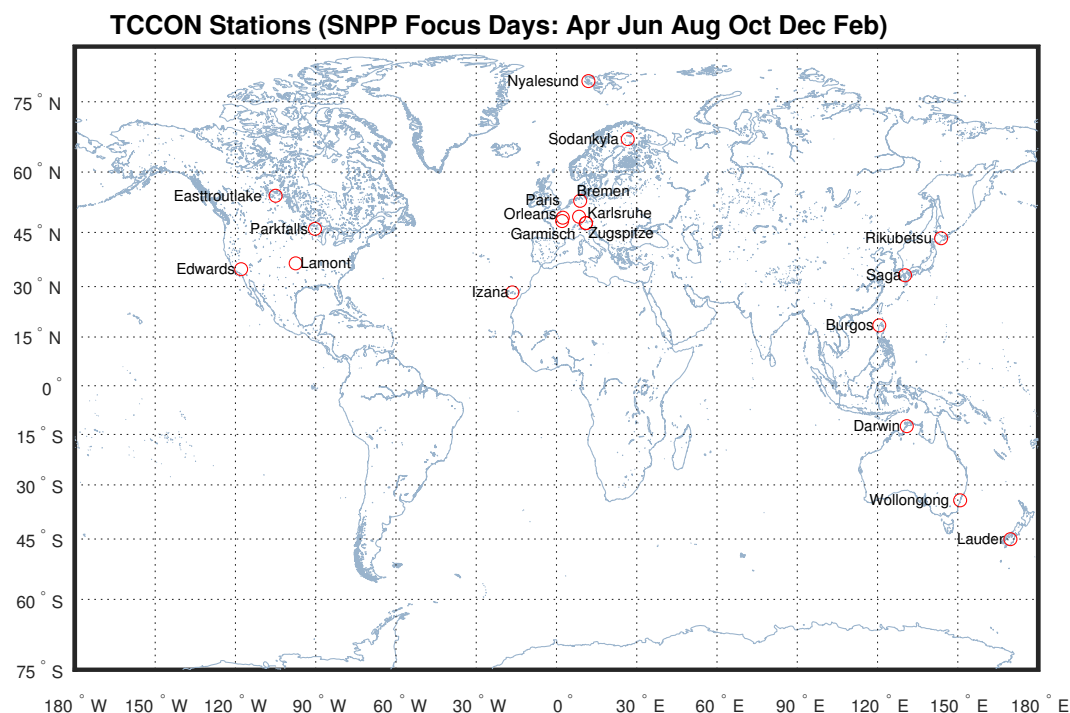


Figure 5. TCCON stations [31] collocated with SNPP NUCAPS (QA -accepted cases, $\Delta r \leq 125$ km and ± 2 h) for 6 global focus days (1 April 2018, 15 June 2018, 20 August 2018, 15 October 2018, 15 December 2018, 15 February 2019); stations shown are (south to north): Lauder (NZ) [41,42], Wollongong (AU) [43], Darwin (AU) [44], Burgos, Ilocos Norte (PH) [45], Izana (ES) [46], Saga (JP) [47], Edwards (US) [48], Lamont (US) [49], Rikubetsu (JP) [50], Park Falls (US) [51], Zugspitze (DE) [52], Garmisch (DE) [53], Orléans (FR) [54], Paris (FR) [55], Karlsruhe (DE) [56], Bialystok (PL) [57], East Trout Lake, SK (CA) [58], Sodankylä (FI) [59,60], and Ny Ålesund, Spitsbergen (NO) [61].

As mentioned in Section 3.1, statistical comparisons of NUCAPS with TCCON requires unit conversions, as well as integration of the NUCAPS 100 layer profiles. In this case, the NUCAPS profiles (in layer abundances, molecules/cm²) are first converted to dry mole fractions and then integrated into a total column value with or without the TCCON AKs applied, as detailed in Appendix A. The results for SNPP NUCAPS retrievals versus individual TCCON stations, ordered from south to north, are summarized in Figure 6; these plots show reasonable consistency of the SNPP NUCAPS retrievals versus individual TCCON stations (similar results were obtained for NOAA-20, but not shown here due to space constraints). The positive bias evident in the CO results may in part be due to the different vertical sensitivities between the NUCAPS and TCCON measurements, as evidenced by column AK peak altitudes shown in Figures 1 and 3. The TCCON vertical sensitivities for CO are weighted toward the upper troposphere and above, whereas sensitivities for CH₄ and CO₂ transition to the troposphere for larger solar zenith angles, with a crossover point roughly in the mid-troposphere (≈ 450 hPa). NUCAPS retrievals, on the other hand, being derived from passive thermal IR spectra, tend on having peak sensitivity weighted toward the mid-troposphere. In addition to the different instrument sensitivities, however, there is also a known problem in the TCCON X_{CO} scaling, wherein the TCCON data were scaled down by $\approx 6.7\%$ to match older aircraft data. There is now less confidence placed in this value given that it has changed as more recent in situ profiles have been added for comparison [62], and thus it is believed that this scaling factor also contributes to the observed discrepancy between the NUCAPS and TCCON CO.

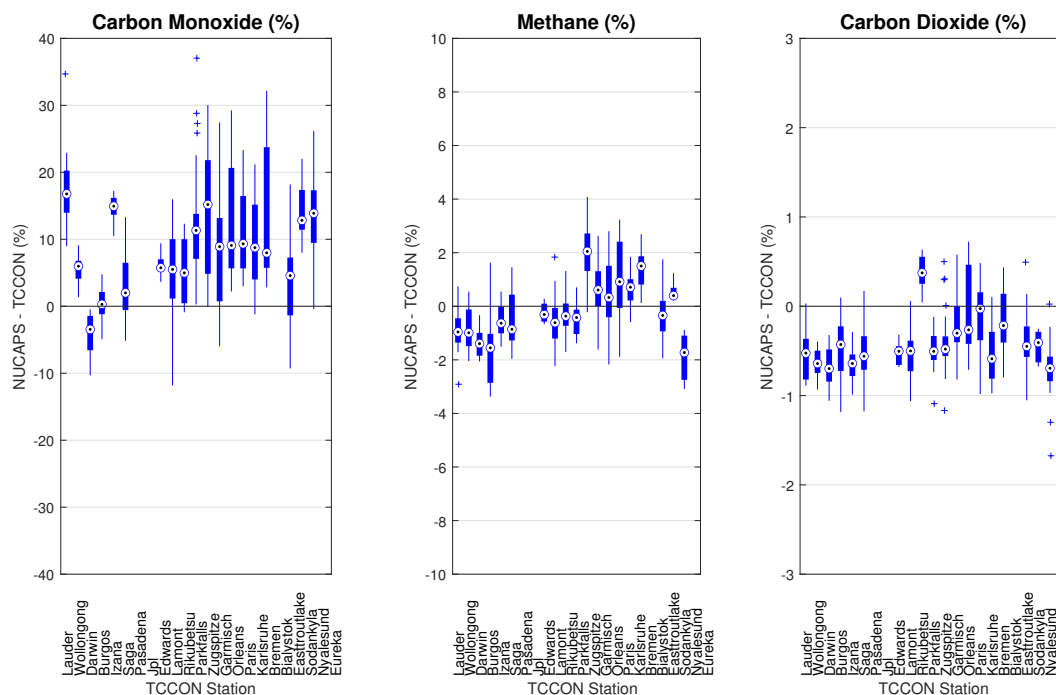


Figure 6. Box-whisker robust error statistics (%) of total column SNPP NUCAPS trace gas retrievals (QA-accepted cases including trace gas QA) versus means at individual collocated ($\Delta r \leq 125$ km and ± 2 h) TCCON stations, ordered from south to north: (left) CO, (center) CH₄, and (right) CO₂. Circles and blue boxes depict medians and interquartile range, respectively; blue “whiskers” depict remaining data spread excluding outliers, and + signs designate outliers. TCCON column AKs were applied in the NUCAPS column integrations (cf. Appendix A). Note that available data from Caltech, Pasadena (US) [63], Jet Propulsion Laboratory (US) [64], Bremen (DE) [65], and Eureka (CA) [66] ultimately did not meet the collocation criteria.

The results for the complete QA-ed samples ($N = 472, 422, 540$, yields = 74%, 67%, 85% for CO, CH₄ and CO₂, respectively) are summarized as scatterplots and histograms in Figures 7 and 8, respectively. The scatterplots show reasonable correlation between the total column retrievals and TCCON measurements ($r = 0.89, 0.63, 0.86$ for CO, CH₄ and CO₂, respectively), and the histograms show roughly Gaussian distributions in the errors. Featured in the histograms are results with (blue) and without (red) the TCCON AKs applied to the integrations, which for CH₄ and CO₂ basically show very little difference when the AKs are applied. However, for CO a somewhat larger bias is seen when TCCON AKs are applied. At first this may seem counterintuitive, but this is likely because, as already mentioned, the TCCON AKs for CO (unlike CH₄ and CO₂) all peak above the UT/LS, whereas the NUCAPS AKs for CO peak in the mid-troposphere. Thus, greater weight is given to the upper-troposphere/lower-stratosphere (UT/LS) when TCCON AKs are applied to NUCAPS, and given that NUCAPS has no skill above 100 hPa, we therefore would expect less agreement in the total column results.

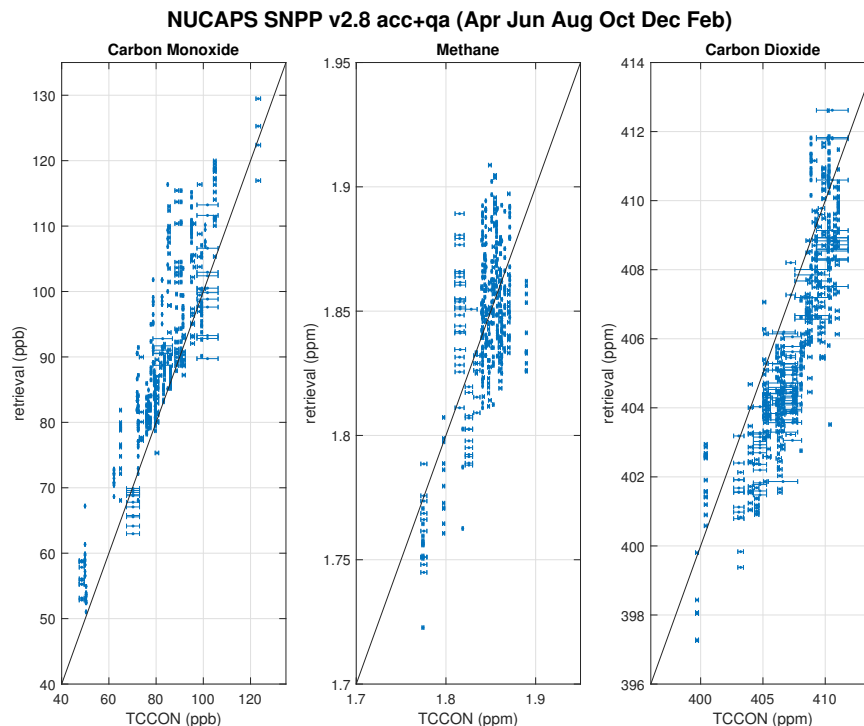


Figure 7. Scatterplots of total column SNPP NUCAPS trace gas retrievals versus means at individual collocated TCCON stations ($\Delta r \leq 125$ km radius and Δt within ± 2 h): (left) CO, (center) CH₄, and (right) CO₂; horizontal errorbars denote the 3σ uncertainties in the mean collocated TCCON measurements. TCCON column AKs were applied in the NUCAPS column integrations (cf. Appendix A); “acc+qa” indicates QA-accepted retrievals including trace gas QA.

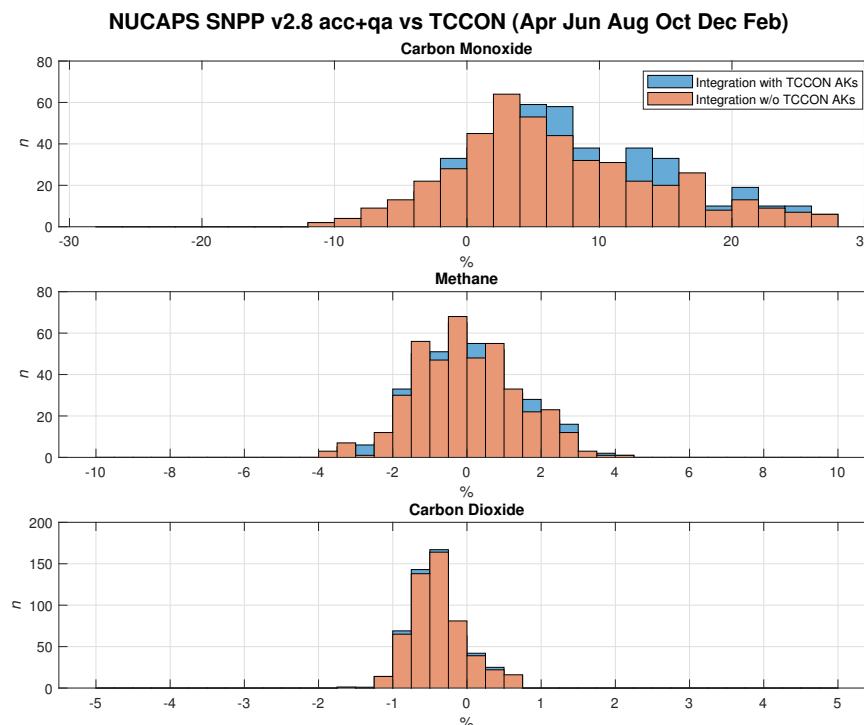


Figure 8. Histograms of total column differences (%) between SNPP NUCAPS trace gas retrievals and individual TCCON station means: (top) CO, (center) CH₄, and (bottom) CO₂. The blue and red histograms show results with and without TCCON column AKs applied in the NUCAPS integrations, respectively; “acc+qa” indicates QA-accepted retrievals including trace gas QA.

4.2. Statistical Analysis versus AirCore Baseline

Like TCCON, AirCore data can provide spot-checks and an additional evaluation method for comparing results from multiple satellites (viz. SNPP and NOAA-20). NOAA/GML provided us with 42 complete AirCore profiles launched over the period of 22 March 2018 to 30 January 2020. The AirCore balloon launches were timed for LEO satellite overpasses, specifically the Orbiting Carbon Observatory-2 (OCO-2) within the NASA A-Train constellation (01:30 and 13:30 local equator crossing time orbit), which fortuitously collocate with the SNPP and NOAA-20 overpasses in the same afternoon orbit. NUCAPS FORs are included within $\Delta r \leq 100$ km radius and Δt within ± 2 h of the AirCore launches; Figure 9 shows the locations of collocated NOAA-20 NUCAPS FOR along with the AirCore launch sites. One may see that the samples are primarily located over North America, with a handful located in Europe.

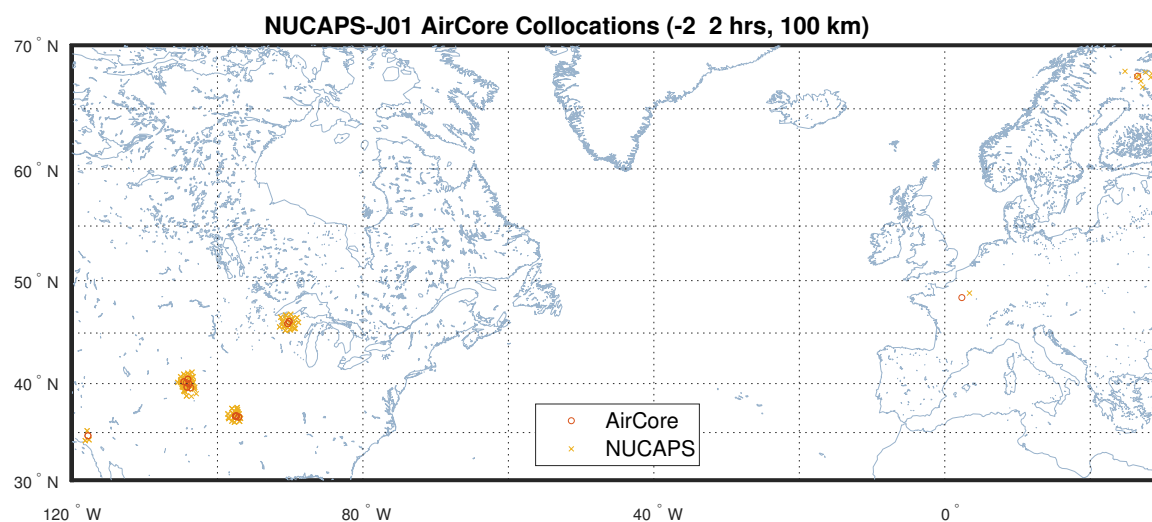


Figure 9. NOAA-20 NUCAPS collocations with AirCore launches ($\Delta r \leq 100$ km radius and Δt within ± 2 h).

The original “high density” profiles were reduced to the NUCAPS 100 RTA layer abundances as described in Section 3.2. To perform the unit conversions it was necessary to utilize the AirCore payload InterMet-1 radiosonde temperature and relative humidity (RH) measurements, but negative RH values were sometimes reported by the sonde in the UT/LS. To get around this problem, we simply adjusted these values to a small positive number (1%), as the stated accuracy of the InterMet-1 RH sensor is $\pm 5\%$. To justify this, we performed a simple sensitivity test to determine the error in layer abundance for a +1% RH perturbation (performing conversions with 1% added to the entire RH profile and then subtracting the unperturbed values). The results are presented as a function of ambient water vapor mixing ratio (ppmv) and pressure altitude in Figure 10, where it can be seen that the error from a 1% RH adjustment is negligible.

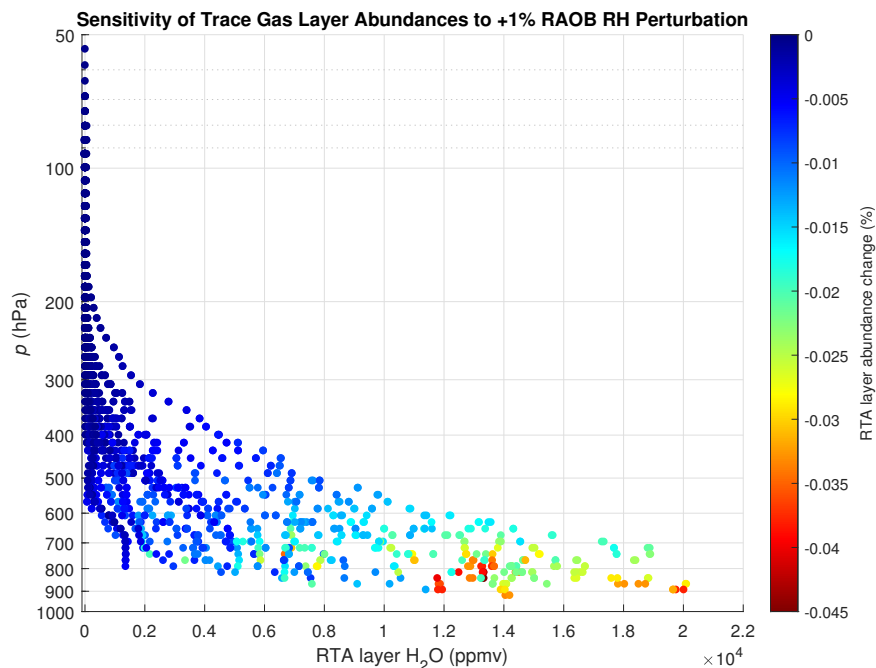


Figure 10. Sensitivity of computed trace gas (carbon monoxide) NUCAPS RTA layer abundances (% error). The x -axis is the RTA layer water vapor volume mixing ratio (ppmv) and the y -axis is pressure altitude (hPa).

Because of the limited DoF and vertical sensitivity of the instrument, we also use AKs in our evaluation of the NUCAPS carbon trace gas profile retrievals. Thus the analysis will include results based upon “smoothed” correlative truth data, \mathbf{x}_s , which is obtained by applying the NUCAPS effective-AKs \mathbf{A}_e to the original high-resolution truth profile \mathbf{x} [26,39,40]

$$\ln(\mathbf{x}_s) = \ln(\mathbf{x}_0) + \mathbf{A}_e [\ln(\mathbf{x}) - \ln(\mathbf{x}_0)], \quad (4)$$

where \mathbf{x}_0 is the a priori profile. Using \mathbf{x}_s in place of \mathbf{x} in the statistical analyses effectively removes the null-space error associated with the limited vertical resolution inherent in the radiances used by the retrieval algorithm. However, caution must be exercised when using this approach. When the algorithm possess little-to-no sensitivity to a profile parameter \mathbf{x} , the AK matrix becomes a null matrix, $\mathbf{A}_e \rightarrow \mathbf{0}_{n,n}$, and the second term on the right in Equation (4) goes to zero. In this case, both the smoothed truth profile and the retrieval reduce to the a priori, \mathbf{x}_0 . Although the result would indicate that the retrieval system is self-consistent and working properly, it would also give the misleading appearance of a perfect retrieval of the true atmospheric state, which is definitely not the case.

Figures 11 and 12 show the resulting statistical comparisons of the collocated NOAA-20 NUCAPS retrievals versus the AirCore profiles, without and with AKs applied, respectively. The results for CO, CH₄ and CO₂ are shown in the left, middle and right plots, respectively. From Figure 9, we recall that the AirCore profiles are all located over Northern Hemisphere (NH) land-based sites (viz., North America and Europe). We subsequently found that several of these profiles exhibited very large gradients that are well outside the theoretical vertical resolution limitations of the CrIS sensor, with vertical gradients in the AirCore high-resolution profiles not well-captured by the NUCAPS climatological a priori. The profile statistics for AirCore are shown on the coarse-layers defined by the NUCAPS algorithm trapezoidal basis functions, similar to the statistical analyses of NUCAPS $T(p)/\text{H}_2\text{O}/\text{O}_3$ profiles [21,22].

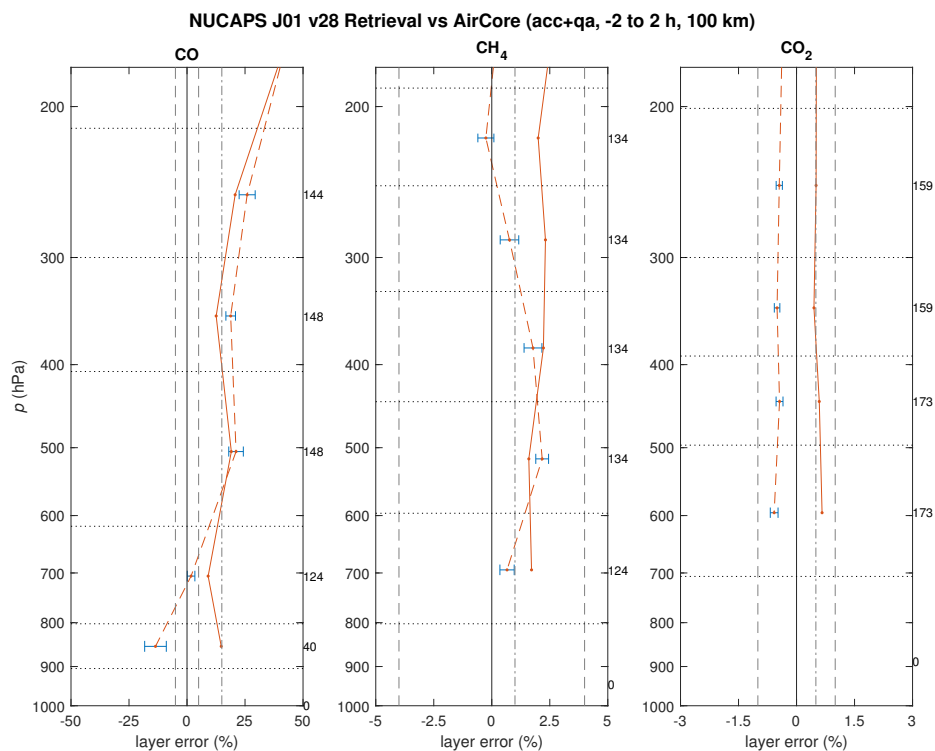


Figure 11. NOAA-20 NUCAPS coarse-layer accuracy (bias $\pm 2\sigma$ uncertainty in the sample mean; dotted red line and blue hatches) and precision (1σ variability; solid dark red line) statistics versus AirCore profiles: (left) carbon monoxide, (center) methane, and (right) carbon dioxide. Layer sample sizes are indicated on the right margins; “acc+qa” indicates QA-accepted retrievals including trace gas QA.

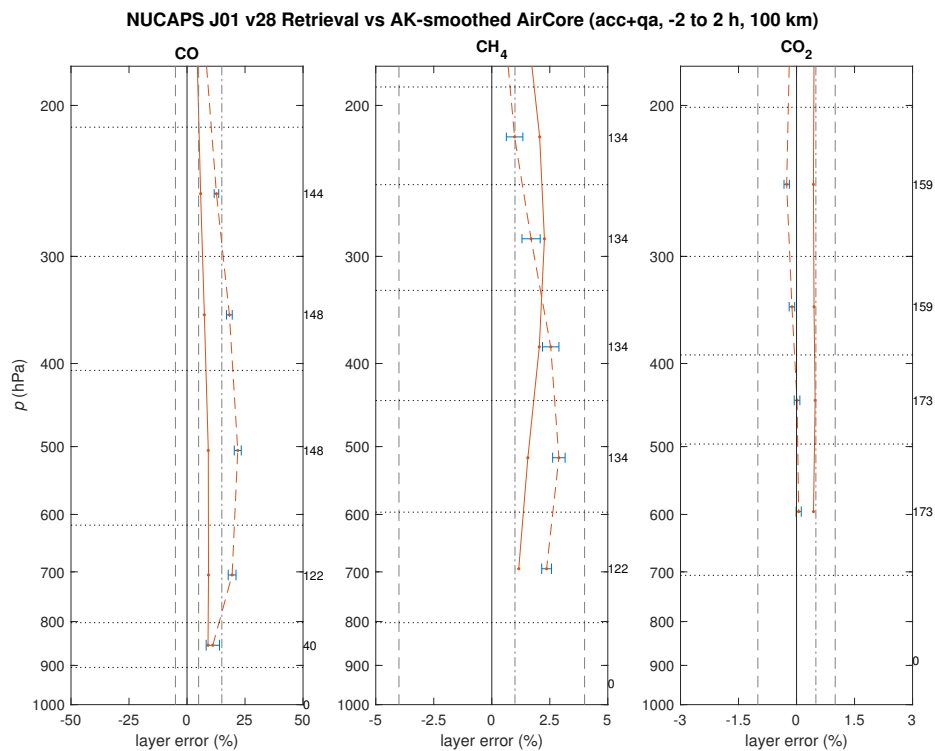


Figure 12. As Figure 11 except with NUCAPS AKs applied to the high resolution AirCore data as indicated by Equation (4).

For this small NH continental sample, the NUCAPS retrievals are found to exhibit somewhat a positive bias in CO and CH₄, both without (Figure 11) and with AKs (Figure 12) applied. The latter indicates biases not arising from null-space errors ($\lesssim 25\%$ and $\lesssim 2.5\%$, respectively) and thus there is systematic error in the layers where NUCAPS has sensitivity. This results from AirCore profiles with higher observed concentrations (not shown here) in the lower troposphere ($\gtrsim 700$ hPa), decreasing rapidly to the mid-troposphere (≈ 500 hPa), then increasing again to the upper troposphere (≈ 200 hPa). NUCAPS, on the other hand, has sensitivity in the mid-troposphere (Figure 3), and the a priori concentrations generally decrease with height. In contrast, the CO₂ retrievals exhibit a very small negative bias ($\approx 0.5\%$), with most of that apparently null-space error as seen in the results with AKs applied (Figure 12 right), indicating that the retrieval is accurate in the layers of sensitivity (Figure 3). Precision magnitudes (random errors) for all three gases are somewhat comparable to their accuracies (systematic errors), with some of those errors originating from their null-spaces, especially carbon monoxide, and to a lesser extent, carbon dioxide. Given the limited size and geographic representation of the sample, these results should not be considered definitive or globally representative, but they do offer insight into the challenges inherent in retrieving regional profiles over land. But more importantly, these first-use results demonstrate the potential utility of the AirCore sampling system for operational trace gas validation.

4.3. Statistical Analysis versus ATom Baseline

The in situ global data from the ATom intensive campaigns are considered to be at the top of our validation “hierarchy” (cf. Section 2). Thus, while we relied more on the TCCON analyses for the developmental phases of the trace gas algorithms (per the hierarchical approach), we give higher weight to the ATom data for a final quantitative evaluation of the NUCAPS carbon gas EDR product performance relative to the metrics defined by the JPSS Level 1 requirements summarized in Table 1. Although JPSS requirements are applicable to the total system error (including null-space error), it is nevertheless imperative to include AKs in the validation of the carbon trace gases as in Section 4.2, with the caveats discussed above in that section. Similar to the analyses for TCCON and AirCore, NUCAPS FORs are collocated within $\Delta r \leq 100$ km radius and Δt within ± 1.5 h of the ATom measurements. Figure 13 shows the dates and locations of SNPP and NOAA-20 NUCAPS FOR collocated with the midpoint of extracted profiles from the ATom-1, -2, and -4 campaigns. These maps show the excellent global zonal representation of the validation sample, albeit primarily over oceans. Although the NUCAPS retrievals may generally be “easier” (i.e., more accurate) over ocean surfaces (i.e., where the surface emission/reflectance properties are relatively uniform and well characterized relative to the retrieval uncertainties) [67], this is not always the case [68], and operational satellite data have been demonstrated to make their greatest impact over the data-sparse oceans [69]. Thus the ATom data are of singular value for our validation.

Based on the NUCAPS-ATom collocation samples, the global profile error statistics for the NUCAPS retrievals (IR accepted cases, clear to partly cloudy, with trace gas QA applied (Warner et al., manuscript in prep for Atmos. Chem. Phys.)) are computed versus ATom NOAA Picarro baseline; as before (cf. Section 4.2), the results are summarized within Figures 14–17, with CO, CH₄ and CO₂ statistics shown in the left, center, and rightmost plots. Because the ATom profiles generally exhibit smaller vertical gradients and are closer to the NUCAPS a priori profiles (as opposed to AirCore), we display these results on the original 100 RTA layers (as opposed to trapezoidal coarse-layers). For reference, the JPSS Level 1 global specification requirements (Table 1) for accuracy (bias) and precision (variability) are included in the plots with dashed gray lines. Figures 14 and 15 show results for NOAA-20 and SNPP, respectively, and these are followed by Figures 16 and 17, which show the results with the NUCAPS AKs applied to the ATom profiles.

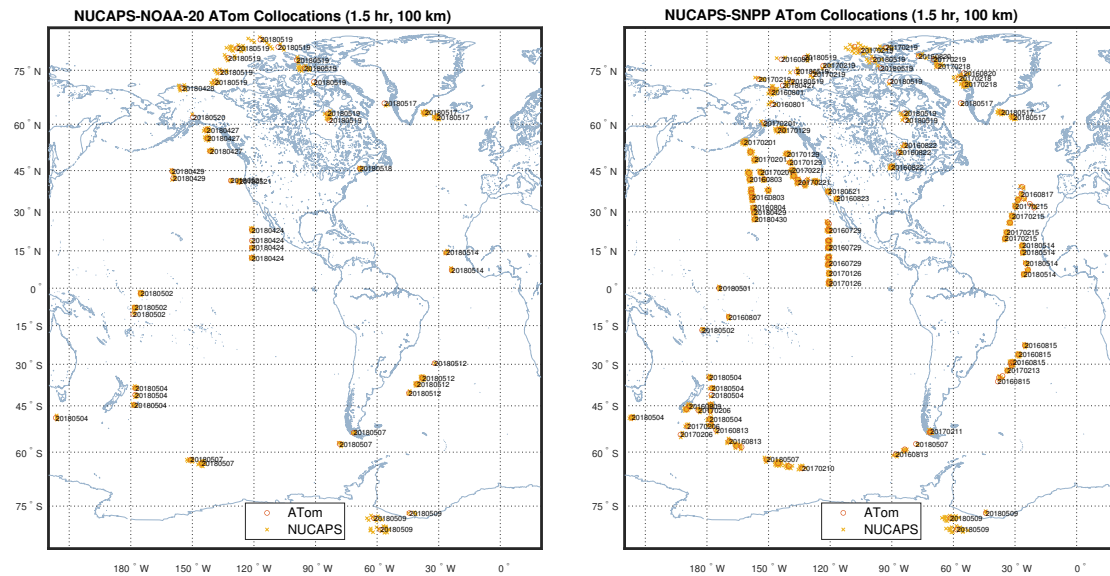


Figure 13. ATom collocation samples for NUCAPS carbon trace gas profile validation: NUCAPS FOR (gold ×) are shown collocated with extracted ATom profiles (red circles) within space-time collocation windows of $\Delta r \leq 100$ km radius and Δt within ± 1.5 h for (left) ATom-4 with NOAA-20, and (right) ATom-1, -2, -4 with SNPP.

In the leftmost plots of Figures 14 and 15 we find that the CO accuracy (biases) for the broad layer between 400–600 hPa (which corresponds to the region where the algorithm has maximum sensitivity) are reasonably close to, or within, JPSS requirements; CH₄ and CO₂ biases, on the other hand, are well within requirements throughout the troposphere, with CH₄ bias statistically close to zero (at the 2σ level) below 400 hPa. Precision (variabilities) for CO and CH₄ fall somewhat outside the requirements, whereas the CO₂ precision meets requirements throughout the entire tropospheric column.

When the AKs are applied to the truth data via Equation (4) (Figures 16 and 17), the retrievals are seen to be within JPSS requirements throughout the tropospheric column, with the exception of CH₄. While these are not the actual total-system accuracy and precision relative to the correlative measurement, they indicate that the algorithm is performing properly within its theoretical limits, which includes the vertical resolution afforded by the radiances, cloud-clearing, RTA tuning, a priori, algorithm damping factor (an optimization parameter that limits noise propagation into the solution [40]) and QA flags. In particular we can see that errors falling outside of requirements in the CO and CO₂ retrievals are the result of the null-space error; thus these errors are indicative of a fundamental limitation in the vertical resolving power of the CrIS sensor. The methane precision, on the other hand, poses an enduring problem, given that the results still fall outside requirements throughout the troposphere (with the exception of the lower troposphere, where NUCAPS has little skill; Figure 3b), even with AKs applied. We also found this to be the case with tighter space-time collocation criteria (not shown here), which would reduce potential mismatch errors, but also decreases sample size and thus redundancy. Thus, these comparisons to a large swath of recent in situ measurements (ATom, AirCore and TCCON) suggest that the CH₄ precision threshold (viz., 1%), may in fact be unrealistically stringent, especially when one considers the far more relaxed requirement for accuracy (viz., 4%).

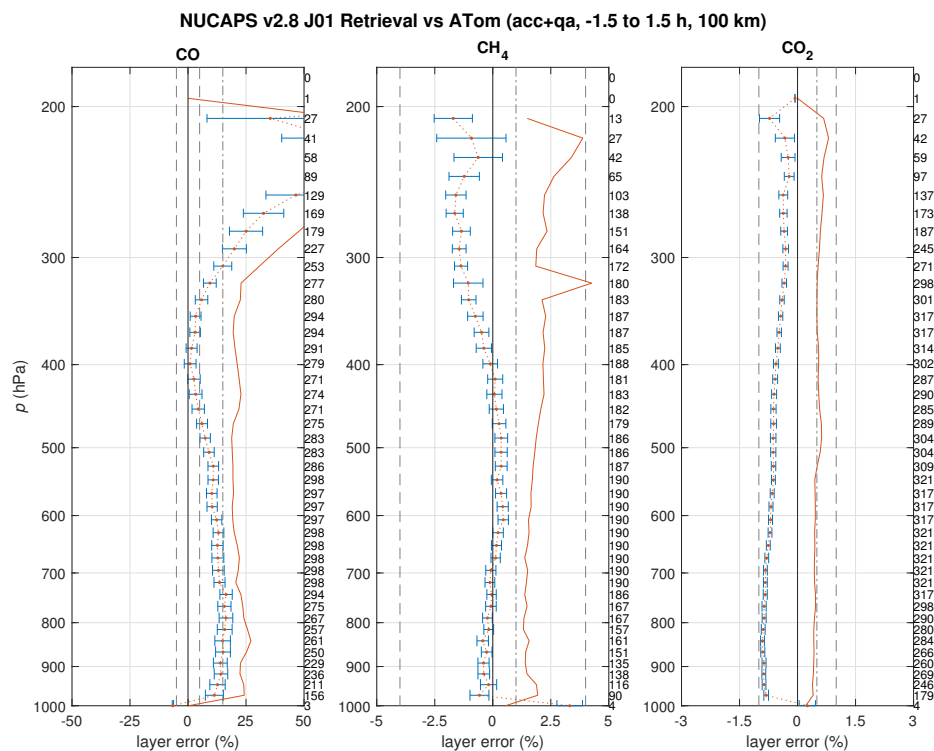


Figure 14. NOAA-20 NUCAPS 100-RTA layer accuracy (bias $\pm 2\sigma$ uncertainty in the sample mean; dotted red line and blue hatches) and precision (1 σ variability; solid dark red line) statistics versus ATom-4 in situ aircraft data (NOAA Picarro measurements): **(left)** carbon monoxide, **(center)** methane, and **(right)** carbon dioxide. Layer sample sizes are indicated on the right margins. The vertical dashed and dot-dashed gray lines indicate the JPSS Level 1 requirements for accuracy (bias) and precision (variability), respectively; “acc+qa” indicates QA-accepted retrievals including trace gas QA.

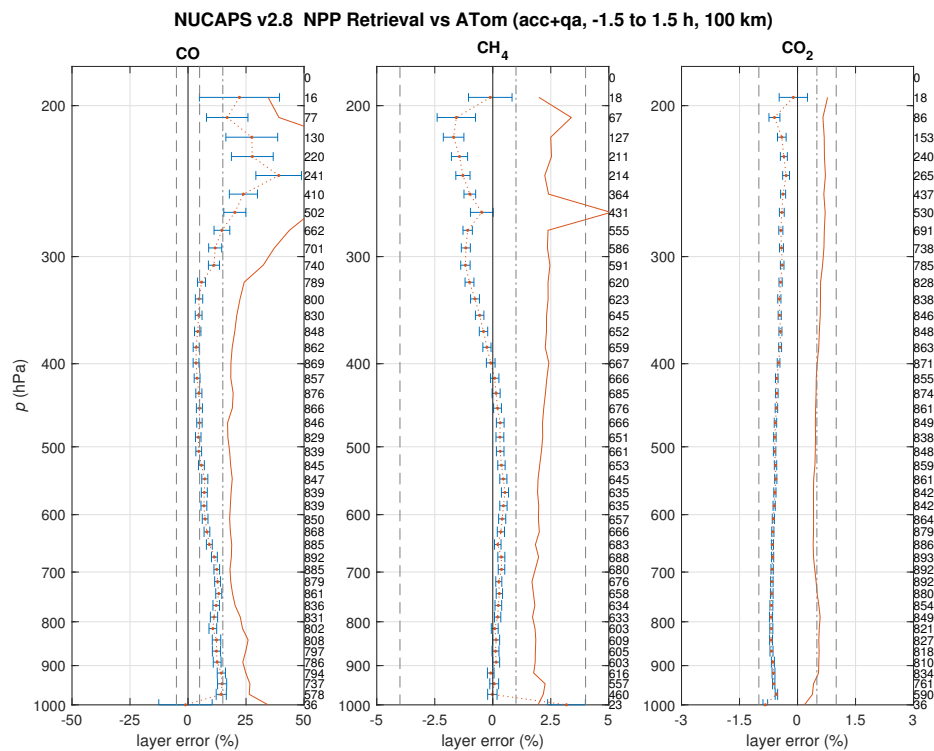


Figure 15. As Figure 14 except for the SNPP satellite versus ATom-1, -2 and -4.

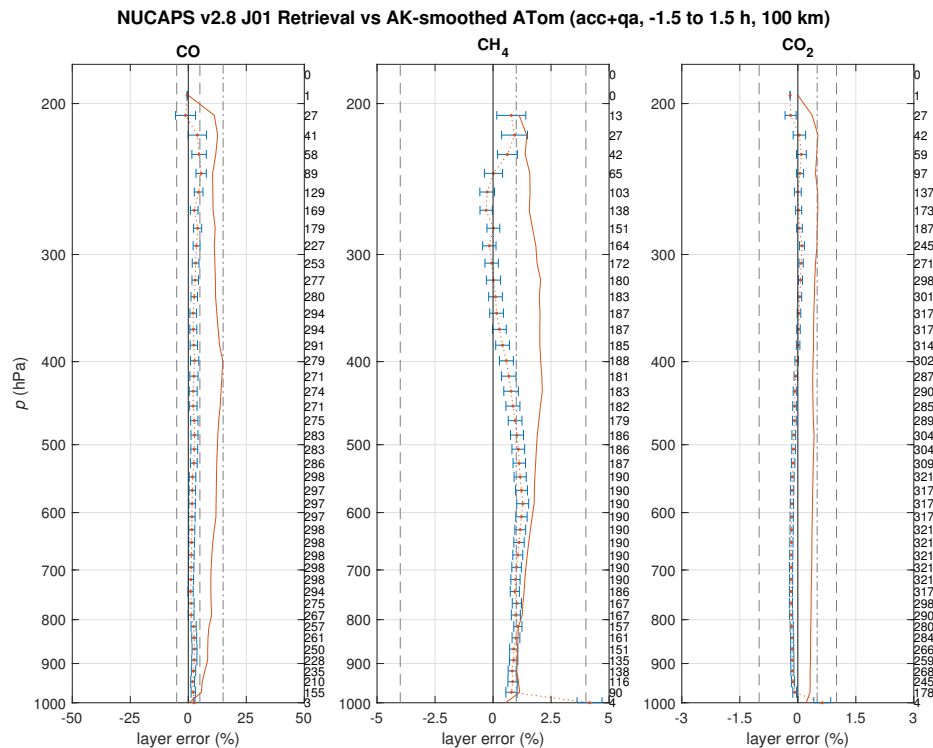


Figure 16. As Figure 14 except with NUCAPS AKs applied to the ATom data as indicated by Equation (4).

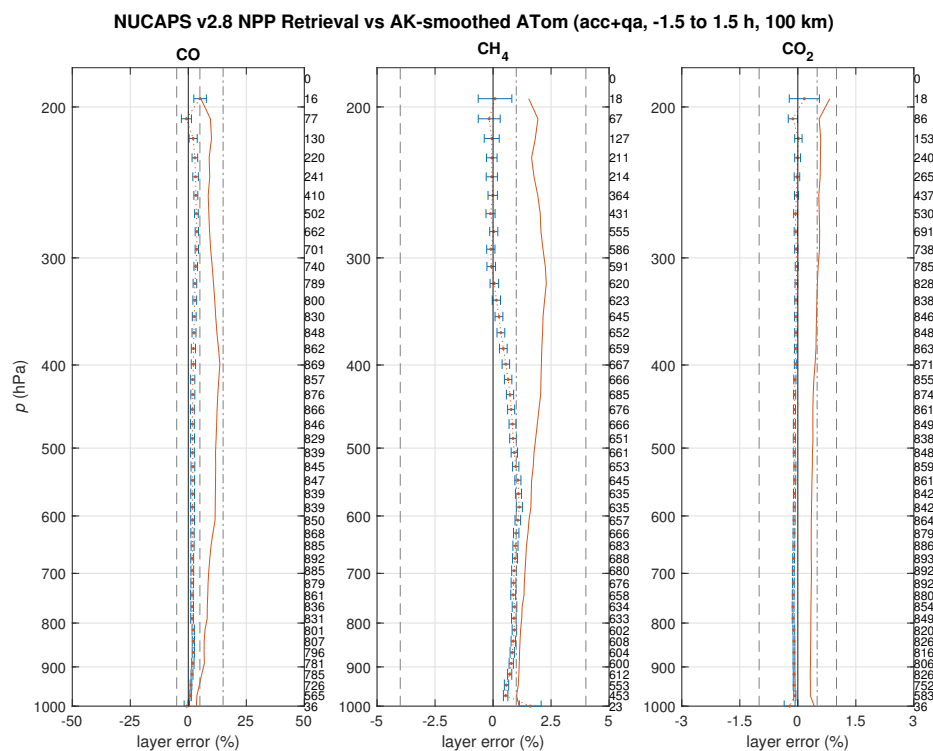


Figure 17. As Figure 14 except for the SNPP satellite.

The total column results relevant to the JPSS requirements (cf. Section 3.3) for both the NOAA-20 and SNPP data samples are summarized in Table 2 in terms of fractional accuracy (bias), precision (1σ variability), total combined uncertainty (RMSE), correlation coefficient (r) and associated p -values, sample sizes (N), and yield. For completeness, we include results with and without NUCAPS AKs applied to the ATom truth profiles, indicated by “AK” and “raw” columns, respectively. As commented above, with the exception of the CH_4 precision, results are generally within requirements, especially

when NUCAPS AKs are applied. Likewise, the NUCAPS CO and CO₂ products both exhibit good total column correlation with ATom measurements (>0.75), with CH₄ on the order of 0.5.

Table 2. Validated NUCAPS-CrIS Trace Gas EDR Total Column Measurement Uncertainty (ATom Baseline).

Trace Gas	Bias (%)		σ (%)		RMSE (%)		r		p		N	Yield
	Raw	AK	Raw	AK	Raw	AK	Raw	AK	Raw	AK		
NOAA-20												
CO	+10.5	+2.0	18.6	9.6	21.4	9.8	0.92	0.92	0	0	298	59%
CH ₄	−0.2	+0.8	1.4	1.3	1.4	1.6	0.61	0.61	0	0	190	38%
CO ₂	−0.7	−0.1	0.4	0.3	0.8	0.3	0.81	0.84	0	0	321	63%
Suomi NPP												
CO	+7.8	+1.9	15.6	8.3	17.5	8.5	0.91	0.89	0	0	901	64%
CH ₄	+0.0	+0.7	1.6	1.3	1.6	1.5	0.38	0.38	0	0	696	49%
CO ₂	−0.6	−0.1	0.4	0.3	0.7	0.3	0.78	0.79	0	0	969	69%

5. Conclusions and Future Work

This work has presented the formal validation of NOAA-20 and SNPP NUCAPS IR atmospheric carbon trace gas profile EDRs (CO, CH₄ and CO₂), in continuation of the validation of the T , q and O₃ profile EDRs described in earlier papers [21–24]. Because of the NUCAPS cloud-clearing methodology, the NUCAPS atmospheric profile EDRs, including trace gases, are retrieved under global, non-precipitating conditions, allowing the benefit and advantage of twice-per-day (per satellite) global yields on the order of 40–70%.

The NUCAPS IR sounder validation strategy employs a “hierarchical” approach drawing upon multiple independent baseline truth datasets [26], including TCCON ground-based spectrometers, AirCore profiles, and ATom aircraft-based in situ profiles. Based upon these globally representative data, we have conducted ongoing statistical analyses (per the JPSS Cal/Val Program) that have provided guidance for the recent NUCAPS trace gas algorithm improvements validated in this work (Warner et al., manuscript in prep for Atmos. Chem. Phys.). The NUCAPS optimal estimation (OE) physical retrievals generally improve upon the climatological a priori (not shown here due to space limitations) where CrIS has sensitivity (Figure 3). We have subsequently shown here that the carbon trace gas EDRs (CO, CH₄, and CO₂) from the latest version of NUCAPS are performing reasonably within expectations. It is noted that the truth data used in these analyses span all global climate zones (tropical, midlatitude and polar), as well as land and ocean locations (Figures 5, 9 and 13). Based upon our analysis comparing to global in situ vertical profiles from the ATom campaigns, it has been shown that the NUCAPS CrIS-FSR carbon trace gas profile EDRs generally meet JPSS Level 1 global performance requirements (Tables 1 and 2), with the exception of the stringent 1% CH₄ precision specification, which may be extremely difficult to achieve in practice.

Future work on the NUCAPS trace gas products include optimization of the damping parameters, implementation of QA for the CO₂ retrievals, improvements to the SARTA forward model surface emissivity first-guess (land, ocean and snow/ice), as well as exploring additional trace gas products (e.g., NH₃, SO₂, Isoprene, PAN) and collaborations with in situ data providers (e.g., NOAA/GML). The NUCAPS AKs are planned to be included in a future version as standard output in the operational NetCDF files (currently the AKs are output only to offline binary files), and the NUCAPS algorithm will also operationally be supported for data from the EUMETSAT Metop-B, -C and Metop-SG hyperspectral IASI systems.

Author Contributions: Conceptualization, N.R.N., A.G., J.W. and L.Z.; methodology, N.R.N., J.W., C.T., A.G.; software, C.T., M.W., N.R.N., A.G., T.Z.; validation, N.R.N., C.T., J.W., T.Z., Z.W., T.W. (Tianyuan Wang); formal analysis, N.R.N.; investigation, N.R.N.; resources, L.Z., S.K., M.D., M.W., C.T., C.S., B.C.B., K.M., D.W., N.D., F.H., L.T.I., R.K., I.M., J.N., H.O., D.F.P., Y.T., V.V., T.W. (Thorsten Warneke), R.S., M.R.; data curation, N.R.N., C.T., T.W. (Tianyuan Wang), Z.W., A.G., C.S., B.C.B., K.M., D.W., N.M.D., F.H., L.T.I., R.K., I.M., J.N., H.O., D.F.P., Y.T., V.A.V., T.W. (Thorsten Warneke), R.S., M.R.; writing—original draft preparation, N.R.N.; writing—review and editing,

N.R.N., A.G., T.Z., B.C.B., K.M., D.W., N.M.D., F.H., L.T.I., R.K., I.M., J.N., H.O., D.F.P., Y.T., V.A.V., T.W. (Thorsten Warneke); visualization, N.R.N.; supervision, K.P., S.K., L.Z., M.D.; project administration, S.K., K.P., L.Z.; funding acquisition, L.Z., S.K. All authors have read and agreed to the published version of the manuscript.

Funding: This research was supported by the NOAA Joint Polar Satellite System (JPSS-STAR) Office and Cal/Val Program (M. D. Goldberg), along with the NOAA/NESDIS/STAR Satellite Meteorology and Climatology Division. The Atmospheric Tomography Mission (ATom) is a NASA Earth Venture Suborbital 2 project funded by NASA's Earth Science Division; NOAA Picarro measurements on ATom were supported by NASA grant #NNX16AL92A to the University of Colorado. The Paris TCCON site has received funding from Sorbonne Université, the French research center CNRS, the French space agency CNES, and Région Île-de-France. The TCCON stations at Rikubetsu, and Burgos are supported in part by the GOSAT series project. Local support for Burgos is provided by the Energy Development Corporation (EDC, Philippines). NMD is funded by ARC Future Fellowship FT180100327. Darwin and Wollongong TCCON stations are supported by ARC grants DP160100598, LE0668470, DP140101552, DP110103118 and DP0879468. The TCCON stations Garmisch and Zugspitze have been supported by the European Space Agency (ESA) under grant 4000120088/17/I-EF and by the German Bundesministerium für Wirtschaft und Energie (BMWi) via the DLR under grant 50EE1711D.

Acknowledgments: The TCCON data were obtained from the TCCON Data Archive hosted by CaltechDATA at <https://tccondata.org>. Atmospheric Tomography (ATom) Mission data were obtained at <https://doi.org/10.3334/ORNLDAAC/1613>. We are grateful to M. Kopacz (NOAA/UCAR), and other contributors to the NUCAPS development/validation effort, especially C. D. Barnett, N. Smith and R. Esmaili (STC), X. Xiong (NASA/LaRC), E. Maddy (Riverside Technology, Inc.), and W. W. Wolf and A. K. Sharma (NOAA/NESDIS/STAR). Finally, we express our appreciation to the 4 anonymous reviewers who provided constructive feedback that we used to improve the quality of these papers. The views, opinions, and findings contained in this paper are those of the authors and should not be construed as an official NOAA or U.S. Government position, policy, or decision.

Conflicts of Interest: The authors declare no conflict of interest.

Abbreviations

The following abbreviations are used in this manuscript:

AIRS	Atmospheric Infrared Sounder
AK(s)	averaging kernel(s)
ATMS	Advanced Technology Microwave Sounder
ATom	Atmospheric Tomography mission
CAMS	Copernicus Atmosphere Monitoring Service
CrIS	Cross-track Infrared Sounder
DoF	degrees-of-freedom
ECMWF	European Center for Medium Range Weather Forecast
EDR(s)	environmental data record(s)
EUMETSAT	European Organisation for the Exploitation of Meteorological Satellites
FOR(s)	field(s)-of-regard (NUCAPS)
FSR	full spectral-resolution (CrIS)
FTS	Fourier transform spectrometer
IASI	Infrared Atmospheric Sounding Interferometer
JPSS	Joint Polar Satellite System
J-1 or J01	JPSS-1 satellite (i.e., NOAA-20 pre-launch, still used as a designator in operational files)
LEO	low earth orbit
NOAA	National Oceanic and Atmospheric Administration
NUCAPS	NOAA-Unique Combined Atmospheric Processing System
OE	optimal estimation
QA	quality assurance
RH	relative humidity
RMSE	root mean square error
RTA	radiative transfer algorithm (alternatively, rapid transmittance algorithm)
RTM	radiative transfer model
SARTA	Stand-Alone Radiative Transfer Algorithm
SDR(s)	sensor data record(s)
SNPP	Suomi National Polar-orbiting Partnership (satellite)

TCCON Total Carbon Column Observing Network
 UT/LS upper-troposphere/lower-stratosphere

Appendix A. NUCAPS to TCCON Conversions

Appendix A.1. Column Integration Formulas

The TCCON measurement for a given atmospheric profile constitutes an integrated column measurement of dry mole fraction (DMF), X_d . The integrated mole fraction is related to the constituent profile (as a function of pressure, p) as [70]

$$\Sigma_p(X) \equiv \int_0^{p_s} \frac{X(p)}{M(p)g(p, \varphi)} dp, \quad (\text{A1})$$

where p_s is the surface pressure, g is the gravitational acceleration, φ is the latitude, X is the constituent mole fraction, and M is the molecular mass of air. $X(p)$ is related to the DMF, X_d , as

$$X(p) = X_d(p) [1 - Q(p)], \quad (\text{A2})$$

where Q is the mole fraction of water vapor. $M(p)$ may be broken into moist (q) and dry (d) components as

$$M(p) = m_q Q(p) + m_d [1 - Q(p)]. \quad (\text{A3})$$

Substituting Equations (A2) and (A3) into Equation (A1) yields [70]

$$\Sigma_p(X) \equiv \int_0^{p_s} \frac{X_d(p)}{m_d g(p, \varphi) [1 + \epsilon Q_d(p)]} dp, \quad (\text{A4})$$

where $\epsilon \equiv m_q/m_d$ and from Equation (A2) the water vapor DMF is given by

$$Q_d(p) = \frac{Q(p)}{1 - Q(p)}. \quad (\text{A5})$$

Equation (A4) forms the basis integrating the NUCAPS retrievals, which we will return to below in Appendix A.3. It may also be seen that dry mole fractions are required for comparing a given trace gas measurement against TCCON. The conversion of NUCAPS retrievals to DMFs are discussed in the next section.

Appendix A.2. NUCAPS Layer Conversions

In the current application using NUCAPS, the X -constituent dry mole fraction X_d is derived from the NUCAPS retrieved volume mixing ratios, X_v (which in turn are computed from the retrieved layer abundances), as follows. The retrieved mole fraction may be calculated from the gas partial pressure as

$$\hat{X}(P) = \frac{\hat{p}_x(P)}{P}, \quad (\text{A6})$$

where carrots (e.g., \hat{X}) denote measurement estimates (here being the NUCAPS retrievals), P is the RTA atmospheric effective-layer pressure and \hat{p}_x is the retrieved partial pressure of the gas computed from

$$\hat{p}_x(P) = 10^6 \cdot \hat{X}_v(P) [P - \hat{p}_q(P)] \quad (\text{A7})$$

and the water vapor partial pressure is computed from

$$\hat{p}_q(P) = P \frac{\hat{Q}_v(P) \cdot 10^{-6}}{1 + \hat{Q}_v(P) \cdot 10^{-6}} \quad (\text{A8})$$

where \hat{Q}_v is the volume mixing ratio in in parts per million (ppmv). The retrieval dry mole fraction is then computed from Equation (A2) as

$$\hat{X}_d(P) = \frac{\hat{X}(P)}{1 - \hat{Q}(P)}, \quad (\text{A9})$$

where from Equation (A6)

$$\hat{Q}(P) = \frac{\hat{p}_q(P)}{P}. \quad (\text{A10})$$

Appendix A.3. Application of TCCON Column AKs

Rodgers and Connor [30] formulated the theoretical basis for performing rigorous intercomparisons of remotely sensed atmospheric soundings obtained by instruments with differing measurement characteristics. For total column estimates from two observing systems, \hat{C}_1 and \hat{C}_2 , the expected difference is given by [30]

$$\hat{C}_1 - \hat{C}_2 = (\mathbf{a}_1 - \mathbf{a}_2)^T (\mathbf{x} - \mathbf{x}_c) + (\varepsilon_1 - \varepsilon_2), \quad (\text{A11})$$

where \mathbf{a}_1 , \mathbf{a}_2 are the column averaging kernels, and ε_1 , ε_2 are the column measurement errors, for each sensor, respectively, \mathbf{x} is the “true” atmospheric profile state (implicitly in dry mole fraction, omitting the subscript d in vector notation for convenience), and \mathbf{x}_c is the central tendency of the ensemble (assumed to be Gaussian); we take the subscripts “1” and “2” to denote NUCAPS and TCCON, respectively. The corresponding variance, σ^2 , is given by [30]

$$\sigma^2(\hat{C}_1 - \hat{C}_2) = (\mathbf{a}_1 - \mathbf{a}_2)^T \mathbf{S}_c (\mathbf{a}_1 - \mathbf{a}_2) + (\sigma_1^2 + \sigma_2^2), \quad (\text{A12})$$

where \mathbf{S}_c is the background covariance matrix. Given a known “true” profile state, \mathbf{x} , along with \mathbf{S}_c , Equations (A11) and (A12) can be used to verify rigorously whether a collocated NUCAPS and TCCON column observation are consistent within their theoretical measurement limitations.

However, in the current application we are given only a profile estimate (NUCAPS retrieval, $\hat{\mathbf{x}}_1$), and a column estimate (TCCON observation, \hat{C}_2) for the purpose of evaluating NUCAPS using TCCON as a reference, while the “true” profile state remains unknown. Given the significant differences between each system’s AKs (cf. Figures 1 and 3), and that the NUCAPS $\hat{\mathbf{x}}_1$ is an OE retrieval, we estimate the TCCON observation of that state by integrating $\hat{\mathbf{x}}_1$ using the TCCON AKs [30]

$$\hat{C}_{12} = C_0 + \mathbf{a}_2^T (\hat{\mathbf{x}}_1 - \mathbf{x}_0), \quad (\text{A13})$$

where C_0 and \mathbf{x}_0 denote the TCCON column and profile a priori, respectively. This equation roughly follows from Equation (A11) by assuming $\mathbf{a}_1 \equiv \mathbf{i}$ (the unit vector), $\mathbf{x} \equiv \hat{\mathbf{x}}_1$ (the NUCAPS retrieved profile is used in lieu of the unknown truth), $\varepsilon_2 \approx 0$ (the TCCON measurement is accurate), and $\mathbf{x}_c \equiv \mathbf{x}_0$ (i.e., the ensemble central tendency is captured by the TCCON a priori). \hat{C}_{12} can then be used in place of \hat{C}_1 for comparisons against the TCCON observations, \hat{C}_2 , in empirically estimating ε_1 .

The righthand side of Equation (A13) integrates the NUCAPS profile in a manner approximating what TCCON would have observed (under the same ambient environmental conditions) by applying TCCON AKs within the integration. The two terms are computed as follows:

$$C_0 = \frac{\Sigma_p(X_0)}{\int_0^{p_s} \{m_d g(p, \varphi) [1 + \epsilon \hat{Q}_d(p)]\}^{-1} dp}, \quad (\text{A14})$$

where Σ_p is shorthand for the vertical sum, and

$$\mathbf{a}^T (\hat{\mathbf{x}} - \mathbf{x}_0) = \frac{\Sigma_p [A \cdot (\hat{X} - X_0)]}{\int_0^{p_s} \{m_d g(p, \varphi) [1 + \epsilon \hat{Q}_d(p)]\}^{-1} dp}, \quad (\text{A15})$$

where the denominators are the integrated columns for dry air and

$$\Sigma_p(X_0) \equiv \int_0^{p_s} \frac{X_{d_0}(p)}{m_d g(p, \varphi) [1 + \epsilon \hat{Q}_d(p)]} dp, \quad (\text{A16})$$

$$\Sigma_p [A \cdot (\hat{X} - X_0)] \equiv \int_0^{p_s} A(p) \frac{\hat{X}_d(p) - X_{d_0}(p)}{m_d g(p, \varphi) [1 + \epsilon \hat{Q}_d(p)]} dp. \quad (\text{A17})$$

Rigorous application of Equations (A11) and (A12) toward NUCAPS and TCCON intercomparisons using an independent set of collocated truth profiles \mathbf{x} (e.g., high-resolution AirCore profiles) will be the subject of future collaborative work.

References

1. Han, Y.; Revercomb, H.; Cromp, M.; Gu, D.; Johnson, D.; Mooney, D.; Scott, D.; Strow, L.; Bingham, G.; Borg, L.; et al. Suomi NPP CrIS measurements, sensor data record algorithm, calibration and validation activities, and record data quality. *J. Geophys. Res. Atmos.* **2013**, *118*, 12734–12748. [\[CrossRef\]](#)
2. Weng, F.; Zou, X.; Wang, X.; Yang, S.; Goldberg, M.D. Introduction to Suomi national polar-orbiting partnership advanced technology microwave sounder for numerical weather prediction and tropical cyclone applications. *J. Geophys. Res.* **2012**, *117*, D19112. [\[CrossRef\]](#)
3. Han, Y.; Chen, Y. Calibration algorithm for Cross-Track Infrared Sounder full spectral resolution measurements. *IEEE Trans. Geosci. Remote Sens.* **2018**, *56*, 1008–1016. [\[CrossRef\]](#)
4. Cayla, F.R. IASI infrared interferometer for operations and research. In *High Spectral Resolution Infrared Remote Sensing for Earth's Weather and Climate Studies*; NATO ASI Series; Chedin, S., Ed.; Springer: Berlin/Heidelberg, Germany, 1993; Volume 19, pp. 9–19.
5. Hilton, F.; Armante, R.; August, T.; Barnet, C.; Bouchard, A.; Camy-Peyret, C.; Capelle, V.; Clarisse, L.; Clerbaux, C.; Coheur, P.F.; et al. Hyperspectral Earth observation from IASI: Five years of accomplishments. *Bull. Am. Meteorol. Soc.* **2012**, *93*, 347–370. [\[CrossRef\]](#)
6. Aumann, H.H.; Chahine, M.T.; Gautier, C.; Goldberg, M.D.; Kalnay, E.; McMillin, L.M.; Revercomb, H.; Rosenkranz, P.W.; Smith, W.L.; Staelin, D.H.; et al. AIRS/AMSU/HSB on the Aqua Mission: Design, science objectives, data products, and processing systems. *IEEE Trans. Geosci. Remote Sens.* **2003**, *41*, 253–264. [\[CrossRef\]](#)
7. Chahine, M.T.; Pagano, T.S.; Aumann, H.H.; Atlas, R.; Barnet, C.; Blaisdell, J.; Chen, L.; Divakarla, M.; Fetzer, E.J.; Goldberg, M.; et al. AIRS: Improving weather forecasting and providing new data on greenhouse gases. *Bull. Am. Meteorol. Soc.* **2006**, *87*, 911–926. [\[CrossRef\]](#)
8. Gambacorta, A.; Barnet, C.; Wolf, W.; Goldberg, M.; King, T.; Nalli, N.; Maddy, E.; Xiong, X.; Divakarla, M. The NOAA Unique CrIS/ATMS Processing System (NUCAPS): First light retrieval results. In Proceedings of the ITSC-XVIII International TOVS Working Group (ITWG), Toulouse, France, 21–27 March 2012.
9. Smith, N.; Barnet, C.D. Uncertainty Characterization and Propagation in the Community Long-Term Infrared Microwave Combined Atmospheric Product System (CLIMCAPS). *Remote Sens.* **2019**, *11*, 1227. [\[CrossRef\]](#)

10. Susskind, J.; Barnet, C.D.; Blaisdell, J.M. Retrieval of atmospheric and surface parameters from AIRS/AMSU/HSB data in the presence of clouds. *IEEE Trans. Geosci. Remote Sens.* **2003**, *41*, 390–409. [\[CrossRef\]](#)
11. Susskind, J.; Blaisdell, J.; Iredell, L.; Keita, F. Improved temperature sounding and quality control methodology using AIRS/AMSU data: The AIRS Science Team version 5 retrieval algorithm. *IEEE Trans. Geosci. Remote Sens.* **2011**, *49*, 883–907. [\[CrossRef\]](#)
12. Han, Y.; Chen, Y.; Xiong, X.; Jin, X. *S-NPP CrIS Full Spectral Resolution SDR Processing and Data Quality Assessment*; Annual Meeting; American Meteorological Society: Phoenix, AZ, USA, 2015. Available online: <https://ams.confex.com/ams/95Annual/webprogram/Paper261524.html> (accessed on 28 September 2020).
13. Gambacorta, A.; Barnet, C.; Wolf, W.; King, T.; Maddy, E.; Strow, L.; Xiong, X.; Nalli, N.; Goldberg, M. An experiment using high spectral resolution CrIS measurements for atmospheric trace gases: Carbon monoxide retrieval impact study. *IEEE Geosci. Remote Sens. Lett.* **2014**, *11*, 1639–1643. [\[CrossRef\]](#)
14. Strow, L.L.; Hannon, S.E.; Souza-Machado, S.D.; Motteler, H.E.; Tobin, D. An overview of the AIRS Radiative Transfer Model. *IEEE Trans. Geosci. Remote Sens.* **2003**, *41*, 303–313. [\[CrossRef\]](#)
15. Gambacorta, A.; Nalli, N.R.; Barnet, C.D.; Tan, C.; Iturbide-Sanchez, F.; Zhang, K. *The NOAA Unique Combined Atmospheric Processing System (NUCAPS): Algorithm Theoretical Basis Document (ATBD); ATBD v2.0*; NOAA/NESDIS/STAR Joint Polar Satellite System: College Park, MD, USA, 2017. Available online: https://www.star.nesdis.noaa.gov/jpss/documents/ATBD/ATBD_NUCAPS_v2.0.pdf (accessed on 28 September 2020).
16. Gambacorta, A.; Barnet, C. Methodology and information content of the NOAA NESDIS operational channel selection for the Cross-Track Infrared Sounder (CrIS). *IEEE Trans. Geosci. Remote Sens.* **2013**, *51*, 3207–3216. [\[CrossRef\]](#)
17. Warner, J.X.; Wei, Z.; Strow, L.L.; Barnet, C.D.; Sparling, L.C.; Diskin, G.; Sachse, G. Improved agreement of AIRS tropospheric carbon monoxide products with other EOS sensors using optimal estimation retrievals. *Atmos. Chem. Phys.* **2010**, *10*, 9521–9533. [\[CrossRef\]](#)
18. Warner, J.X.; Carminati, F.; Wei, Z.; Lahoz, W.; Attié, J.L. Tropospheric carbon monoxide variability from AIRS under clear and cloudy conditions. *Atmos. Chem. Phys.* **2013**, *13*, 12469–12479. [\[CrossRef\]](#)
19. Xiong, X.; Barnet, C.; Maddy, E.S.; Gambacorta, A.; King, T.S.; Wofsy, S.C. Mid-upper tropospheric methane retrieval from IASI and its validation. *Atmos. Meas. Tech.* **2013**, *6*, 2255–2265. [\[CrossRef\]](#)
20. Maddy, E.S.; Barnet, C.D.; Goldberg, M.; Sweeney, C.; Liu, X. CO₂ retrievals from the Atmospheric Infrared Sounder: Methodology and validation. *J. Geophys. Res.* **2008**, *113*, D11301. [\[CrossRef\]](#)
21. Nalli, N.R.; Gambacorta, A.; Liu, Q.; Barnet, C.D.; Tan, C.; Iturbide-Sanchez, F.; Reale, T.; Sun, B.; Wilson, M.; Borg, L.; et al. Validation of atmospheric profile retrievals from the SNPP NOAA-Unique Combined Atmospheric Processing System. Part 1: Temperature and moisture. *IEEE Trans. Geosci. Remote Sens.* **2018**, *56*, 180–190. [\[CrossRef\]](#)
22. Nalli, N.R.; Gambacorta, A.; Liu, Q.; Tan, C.; Iturbide-Sanchez, F.; Barnet, C.D.; Joseph, E.; Morris, V.R.; Oyola, M.; Smith, J.W. Validation of atmospheric profile retrievals from the SNPP NOAA-Unique Combined Atmospheric Processing System. Part 2: Ozone. *IEEE Trans. Geosci. Remote Sens.* **2018**, *56*, 598–607. [\[CrossRef\]](#)
23. Sun, B.; Reale, A.; Tilley, F.; Pettet, M.; Nalli, N.R.; Barnet, C.D. Assessment of NUCAPS S-NPP CrIS/ATMS Sounding Products Using Reference and Conventional Radiosonde Observations. *IEEE J. Sel. Top. Appl. Earth Obs.* **2017**, *10*, 2499–2509. [\[CrossRef\]](#)
24. Feltz, M.L.; Borg, L.; Knuteson, R.O.; Tobin, D.; Revercomb, H.; Gambacorta, A. Assessment of NOAA NUCAPS upper air temperature profiles using COSMIC GPS radio occultation and ARM radiosondes. *J. Geophys. Res. Atmos.* **2017**, *122*, 9130–9153. [\[CrossRef\]](#)
25. Zhou, L.; Divakarla, M.; Liu, X. An Overview of the Joint Polar Satellite System (JPSS) Science Data Product Calibration and Validation. *Remote Sens.* **2016**, *8*, 139. [\[CrossRef\]](#)
26. Nalli, N.R.; Barnet, C.D.; Reale, A.; Tobin, D.; Gambacorta, A.; Maddy, E.S.; Joseph, E.; Sun, B.; Borg, L.; Mollner, A.; et al. Validation of satellite sounder environmental data records: Application to the Cross-track Infrared Microwave Sounder Suite. *J. Geophys. Res. Atmos.* **2013**, *118*, 13628–13643. [\[CrossRef\]](#)
27. Fetzer, E.; McMillin, L.M.; Tobin, D.; Aumann, H.H.; Gunson, M.R.; McMillan, W.W.; Hagan, D.E.; Hofstadter, M.D.; Yoe, J.; Whiteman, D.N.; et al. AIRS/AMSU/HSB validation. *IEEE Trans. Geosci. Remote Sens.* **2003**, *41*, 418–431. [\[CrossRef\]](#)

28. Jacobson, A.R.; Schuldt, K.N.; Miller, J.B.; Oda, T.; Tans, P.; Arlyn, A.; Mund, J.; Ott, L.; Collatz, G.J.; Aalto, T.; et al. CarbonTracker CT2019. 2020. Available online: <https://www.esrl.noaa.gov/gmd/ccgg/carbontracker/CT2019/> (accessed on 28 September 2020). [CrossRef]
29. Inness, A.; Ades, M.; Agustí-Panareda, A.; Barré, J.; Benedictow, A.; Blechschmidt, A.M.; Dominguez, J.J.; Engelen, R.; Eskes, H.; Flemming, J.; et al. The CAMS reanalysis of atmospheric composition. *Atmos. Chem. Phys.* **2019**, *19*, 3515–3556. [CrossRef]
30. Rodgers, C.D.; Connor, B.J. Intercomparison of remote sounding instruments. *J. Geophys. Res.* **2003**, *108*, 4116. [CrossRef]
31. Wunch, D.; Toon, G.C.; Blavier, J.F.L.; Washenfelder, R.A.; Notholt, J.; Connor, B.J.; Griffith, D.W.T.; Sherlock, V.; Wennberg, P.O. The Total Carbon Column Observing Network. *Philos. Trans. R. Soc. A* **2011**, *369*, 2087–2112. [CrossRef]
32. Karion, A.; Sweeney, C.; Tans, P.; Newberger, T. AirCore: An Innovative Atmospheric Sampling System. *J. Atmos. Ocean. Technol.* **2010**, *27*, 1839–1853. [CrossRef]
33. Membrive, O.; Crevoisier, C.; Sweeney, C.; Danis, F.; Hertzog, A.; Engel, A.; Bönisch, H.; Picon, L. AirCore-HR: A high-resolution column sampling to enhance the vertical description of CH₄ and CO₂. *Atmos. Meas. Tech.* **2017**, *10*, 2163–2181. [CrossRef]
34. Wofsy, S.; Afshar, S.; Allen, H.; Apel, E.; Asher, E.; Barletta, B.; Bent, J.; Bian, H.; Biggs, B.; Blake, D.; et al. ATom: Merged Atmospheric Chemistry, Trace Gases, and Aerosols. ORNL Distributed Active Archive Center. 2018. Available online: https://daac.ornl.gov/cgi-bin/dsviewer.pl?ds_id=1581 (accessed on 28 September 2020). [CrossRef]
35. Wofsy, S.C. HIPPER Pole-to-Pole Observations (HIPPO): Fine-grained, global-scale measurements of climatically important atmospheric gases and aerosols. *Philos. Trans. R. Soc. A* **2011**, *369*, 2073–2086. [CrossRef]
36. Tans, P.P. System and Method for Providing Vertical Profile Measurements of Atmospheric Gases. U.S. Patent 7,597,014, 6 October 2009.
37. Backus, G.; Gilbert, F. Uniqueness in the Inversion of Inaccurate Gross Earth Data. *Philos. Trans. R. Soc. Lond. A Math. Phys. Sci.* **1970**, *266*, 123–192. [CrossRef]
38. Conrath, B.J. Vertical resolution of temperature profiles obtained from remote radiation measurements. *J. Atmos. Sci.* **1972**, *29*, 1262–1271. [CrossRef]
39. Rodgers, C.D. Characterization and error analysis of profiles retrieved from remote sounding measurements. *J. Geophys. Res.* **1990**, *95*, 5587–5595. [CrossRef]
40. Maddy, E.S.; Barnett, C.D. Vertical resolution estimates in Version 5 of AIRS operational retrievals. *IEEE Trans. Geosci. Remote Sens.* **2008**, *46*, 2375–2384. [CrossRef]
41. Pollard, D.F.; Robinson, J.; Shiona, H. TCCON Data from Lauder (NZ), Release GGG2014.R0. TCCON Data Archive, Hosted by CaltechDATA. 2019. Available online: <https://data.caltech.edu/records/1220> (accessed on 28 September 2020). [CrossRef]
42. Sherlock, V.; Connor, B.J.; Robinson, J.; Shiona, H.; Smale, D.; Pollard, D. TCCON data from Lauder (NZ), 125HR, Release GGG2014R0. TCCON Data Archive, Hosted By CaltechDATA. 2017. Available online: <https://data.caltech.edu/records/281> (accessed on 28 September 2020). [CrossRef]
43. Griffith, D.W.; Velazco, V.A.; Deutscher, N.M.; Murphy, C.; Jones, N.; Wilson, S.; Macatangay, R.; Kettlewell, G.; Buchholz, R.R.; Riggensbach, M. TCCON data from Wollongong (AU), Release GGG2014R0. TCCON Data Archive, Hosted by CaltechDATA. 2014. Available online: <https://ro.uow.edu.au/data/47/> (accessed on 28 September 2020). [CrossRef]
44. Griffith, D.W.; Deutscher, N.M.; Velazco, V.A.; Wennberg, P.O.; Yavin, Y.; Aleks, G.K.; Washenfelder, R.A.; Toon, G.C.; Blavier, J.F.; Murphy, C.; et al. TCCON Data from Darwin (AU), Release GGG2014R0. TCCON Data Archive, Hosted by CaltechDATA. 2017. Available online: <https://data.caltech.edu/records/269> (accessed on 28 September 2020). [CrossRef]
45. Morino, I.; Velazco, V.A.; Akihiro, H.; Osamu, U.; Griffith, D.W.T. TCCON data from Burgos, Ilocos Norte (PH), Release GGG2014.R0. TCCON Data Archive, Hosted by CaltechDATA. 2018. Available online: <https://data.caltech.edu/records/1090> (accessed on 28 September 2020). [CrossRef]
46. Blumenstock, T.; Hase, F.; Schneider, M.; Garcia, O.E.; Sepulveda, E. TCCON data from Izana (ES), Release GGG2014R0. TCCON data archive, hosted by CaltechDATA. 2017. Available online: <https://data.caltech.edu/records/275> (accessed on 28 September 2020). [CrossRef]

47. Kawakami, S.; Ohyama, H.; Arai, K.; Okumura, H.; Taura, C.; Fukamachi, T.; Sakashita, M. TCCON Data from Saga (JP), Release GGG2014R0. TCCON Data Archive, Hosted by CaltechDATA. 2017. Available online: <https://data.caltech.edu/records/288> (accessed on 28 September 2020). [CrossRef]
48. Iraci, L.T.; Podolske, J.; Hillyard, P.W.; Roehl, C.; Wennberg, P.O.; Blavier, J.F.; Allen, N.; Wunch, D.; Osterman, G.B.; Albertson, R. TCCON Data from Edwards (US), Release GGG2014R1. TCCON Data Archive, Hosted by CaltechDATA. 2017. Available online: <https://data.caltech.edu/records/270> (accessed on 28 September 2020). [CrossRef]
49. Wennberg, P.O.; Wunch, D.; Roehl, C.; Blavier, J.F.; Toon, G.C.; Allen, N.; Dowell, P.; Teske, K.; Martin, C.; Martin, J. TCCON data from Lamont (US), Release GGG2014R1. TCCON Data Archive, Hosted by CaltechDATA. 2017. Available online: <https://data.caltech.edu/records/279> (accessed on 28 September 2020). [CrossRef]
50. Morino, I.; Yokozeki, N.; Matzuzaki, T.; Horikawa, M. TCCON data from Rikubetsu (JP), Release GGG2014R2. TCCON Data Archive, Hosted by CaltechDATA. 2017. Available online: <https://data.caltech.edu/records/287> (accessed on 28 September 2020). [CrossRef]
51. Wennberg, P.O.; Roehl, C.; Wunch, D.; Toon, G.C.; Blavier, J.F.; Washenfelder, R.A.; Keppel-Aleks, G.; Allen, N.; Ayers, J. TCCON data from Park Falls (US), Release GGG2014R0. TCCON Data Archive, Hosted by CaltechDATA. 2017. Available online: <https://data.caltech.edu/records/204> (accessed on 28 September 2020). [CrossRef]
52. Sussmann, R.; Rettinger, M. TCCON data from Zugspitze (DE), Release GGG2014R1. TCCON Data Archive, Hosted by CaltechDATA. 2018. Available online: <https://data.caltech.edu/records/923> (accessed on 28 September 2020). [CrossRef]
53. Sussmann, R.; Rettinger, M. TCCON Data from Garmisch (DE), Release GGG2014R0. TCCON Data Archive, Hosted by CaltechDATA. 2014. Available online: <https://data.caltech.edu/records/273> (accessed on 28 September 2020). [CrossRef]
54. Warneke, T.; Messerschmidt, J.; Notholt, J.; Weinzierl, C.; Deutscher, N.M.; Petri, C.; Grupe, P.; Vuillemin, C.; Truong, F.; Schmidt, M.; et al. TCCON Data from Orléans (FR), Release GGG2014R0. TCCON Data Archive, Hosted by CaltechDATA. 2017. Available online: <https://data.caltech.edu/records/283> (accessed on 28 September 2020). [CrossRef]
55. Té, Y.; Jeseck, P.; Janssen, C. TCCON Data from Paris (FR), Release GGG2014R0. TCCON Data Archive, Hosted by CaltechDATA. 2017. Available online: <https://data.caltech.edu/records/284> (accessed on 28 September 2020). [CrossRef]
56. Hase, F.; Blumenstock, T.; Dohe, S.; Gross, J.; Kiel, M. TCCON Data from Karlsruhe (DE), Release GGG2014R1. TCCON Data Archive, Hosted by CaltechDATA. 2017. Available online: <https://data.caltech.edu/records/278> (accessed on 28 September 2020). [CrossRef]
57. Deutscher, N.M.; Notholt, J.; Messerschmidt, J.; Weinzierl, C.; Warneke, T.; Petri, C.; Grupe, P.; Katrynski, K. TCCON Data from Bialystok (PL), Release GGG2014R1. TCCON Data Archive, Hosted by CaltechDATA. 2017. Available online: <https://data.caltech.edu/records/267> (accessed on 28 September 2020). [CrossRef]
58. Wunch, D.; Mendonca, J.; Colebatch, O.; Allen, N.; Blavier, J.F.L.; Roche, S.; Hedelius, J.K.; Neufeld, G.; Springett, S.; Worthy, D.E.J.; et al. TCCON Data from East Trout Lake (CA), Release GGG2014R1. TCCON Data Archive, Hosted by CaltechDATA. 2017. Available online: <https://data.caltech.edu/records/362> (accessed on 28 September 2020). [CrossRef]
59. Kivi, R.; Heikkinen, P.; Kyrö, E. TCCON Data from Sodankyla (FI), Release GGG2014R0. TCCON Data Archive, Hosted by CaltechDATA. 2017. Available online: <https://data.caltech.edu/records/289> (accessed on 28 September 2020). [CrossRef]
60. Kivi, R.; Heikkinen, P. Fourier transform spectrometer measurements of column CO₂ at Sodankylä, Finland. *Geosci. Instrum. Method. Data Syst.* **2016**, *5*, 271–279. [CrossRef]
61. Notholt, J.; Warneke, T.; Petri, C.; Deutscher, N.M.; Weinzierl, C.; Palm, M.; Buschmann, M. TCCON data from Ny Ålesund, Spitsbergen (NO), Release GGG2014R0. TCCON Data Archive, Hosted by CaltechDATA. 2017. Available online: <https://data.caltech.edu/records/301> (accessed on 28 September 2020). [CrossRef]
62. Hedelius, J.K.; He, T.L.; Jones, D.B.A.; Baier, B.C.; Buchholz, R.R.; De Mazière, M.; Deutscher, N.M.; Dubey, M.K.; Feist, D.G.; Griffith, D.W.T.; et al. Evaluation of MOPITT Version 7 joint TIR–NIR X_{CO} retrievals with TCCON. *Atmos. Meas. Tech.* **2019**, *12*, 5547–5572. [CrossRef]

63. Wennberg, P.O.; Wunch, D.; Roehl, C.; Blavier, J.F.; Toon, G.C.; Allen, N. TCCON Data from Caltech (US), Release GGG2014R1. TCCON Data Archive, Hosted by CaltechDATA. 2017. Available online: <https://data.caltech.edu/records/285> (accessed on 28 September 2020). [CrossRef]
64. Wennberg, P.O.; Roehl, C.; Blavier, J.F.; Wunch, D.; Landeros, J.; Allen, N. TCCON Data from Jet Propulsion Laboratory (US), 2011, Release GGG2014R1. TCCON Data Archive, Hosted by CaltechDATA. 2017. Available online: <https://data.caltech.edu/records/277> (accessed on 28 September 2020). [CrossRef]
65. Notholt, J.; Petri, C.; Warneke, T.; Deutscher, N.M.; Buschmann, M.; Weinzierl, C.; Macatangay, R.; Grupe, P. TCCON Data from Bremen (DE), Release GGG2014R0. TCCON Data Archive, Hosted by CaltechDATA. 2017. Available online: <https://data.caltech.edu/records/268> (accessed on 28 September 2020). [CrossRef]
66. Strong, K.; Mendonca, J.; Weaver, D.; Fogal, P.; Drummond, J.; Batchelor, R.; Lindenmaier, R. TCCON Data from Eureka (CA), Release GGG2014R1. TCCON Data Archive, Hosted by CaltechDATA. 2017. Available online: <https://data.caltech.edu/records/271> (accessed on 28 September 2020). [CrossRef]
67. Nalli, N.R.; Joseph, E.; Morris, V.R.; Barnet, C.D.; Wolf, W.W.; Wolfe, D.; Minnett, P.J.; Szczodrak, M.; Izaguirre, M.A.; Lumpkin, R.; et al. Multi-year observations of the tropical Atlantic atmosphere: Multidisciplinary applications of the NOAA Aerosols and Ocean Science Expeditions (AEROSE). *Bull. Am. Meteorol. Soc.* **2011**, *92*, 765–789. [CrossRef]
68. Nalli, N.R.; Barnet, C.D.; Reale, T.; Liu, Q.; Morris, V.R.; Spackman, J.R.; Joseph, E.; Tan, C.; Sun, B.; Tilley, F.; et al. Satellite sounder observations of contrasting tropospheric moisture transport regimes: Saharan air layers, Hadley cells, and atmospheric rivers. *J. Hydrometeorol.* **2016**, *17*, 2997–3006. [CrossRef]
69. Le Marshall, J.; Jung, J.; Goldberg, M.; Barnet, C.; Wolf, W.; Derber, J.; Treadon, R.; Lord, S. Using cloudy AIRS fields of view in numerical weather prediction. *Aust. Met. Mag.* **2008**, *57*, 249–254.
70. Wunch, D.; Toon, G.C.; Wennberg, P.O.; Wofsy, S.C.; Stephens, B.B.; Fischer, M.L.; Uchino, O.; Abshire, J.B.; Bernath, P.; Biraud, S.C.; et al. Calibration of the Total Carbon Column Observing Network using aircraft profile data. *Atmos. Meas. Tech.* **2010**, *3*, 1351–1362. [CrossRef]



© 2020 by the authors. Licensee MDPI, Basel, Switzerland. This article is an open access article distributed under the terms and conditions of the Creative Commons Attribution (CC BY) license (<http://creativecommons.org/licenses/by/4.0/>).