



**HAL**  
open science

## Dune Initiation in a Bimodal Wind Regime

Pauline Delorme, Giles. F. S. Wiggs, Matthew. C. Baddock, Philippe Claudin, Joanna M. Nield, Andrew Valdez

► **To cite this version:**

Pauline Delorme, Giles. F. S. Wiggs, Matthew. C. Baddock, Philippe Claudin, Joanna M. Nield, et al.. Dune Initiation in a Bimodal Wind Regime. *Journal of Geophysical Research: Earth Surface*, 2020, 125 (11), 10.1029/2020JF005757 . hal-03094403

**HAL Id: hal-03094403**

**<https://hal.sorbonne-universite.fr/hal-03094403>**

Submitted on 4 Jan 2021

**HAL** is a multi-disciplinary open access archive for the deposit and dissemination of scientific research documents, whether they are published or not. The documents may come from teaching and research institutions in France or abroad, or from public or private research centers.

L'archive ouverte pluridisciplinaire **HAL**, est destinée au dépôt et à la diffusion de documents scientifiques de niveau recherche, publiés ou non, émanant des établissements d'enseignement et de recherche français ou étrangers, des laboratoires publics ou privés.



## RESEARCH ARTICLE

10.1029/2020JF005757

## Dune Initiation in a Bimodal Wind Regime

 Pauline Delorme<sup>1</sup> , Giles F. S. Wiggs<sup>2</sup> , Matthew C. Baddock<sup>3</sup> , Philippe Claudin<sup>4</sup> ,  
 Joanna M. Nield<sup>1</sup> , and Andrew Valdez<sup>5</sup>

## Key Points:

- We report high-resolution measurements of protodune morphodynamics during a 1-month field campaign
- Our data provide the first field validation of a linear stability analysis for a flat sand bed under a bidirectional wind regime
- We quantify relations between sand flux and complex wind regime characteristics that are important for aeolian dune initiation and growth

## Supporting Information:

- Supporting Information S1

## Correspondence to:

 P. Delorme,  
 P.M.T.Delorme@soton.ac.uk

## Citation:

 Delorme, P., Wiggs, G. F. S., Baddock, M. C., Claudin, P., Nield, J. M., & Valdez, A. (2020). Dune initiation in a bimodal wind regime. *Journal of Geophysical Research: Earth Surface*, 125, e2020JF005757. <https://doi.org/10.1029/2020JF005757>

Received 24 JUN 2020

Accepted 18 SEP 2020

Accepted article online 14 NOV 2020

<sup>1</sup>School of Geography and Environmental Science, University of Southampton, Southampton, UK, <sup>2</sup>School of Geography and the Environment, University of Oxford, Oxford, UK, <sup>3</sup>Geography and Environment, Loughborough University of Technology, Loughborough, UK, <sup>4</sup>Laboratoire de Physique et Mécanique des Milieux hétérogènes, PMMH UMR7636 CNRS, ESPCI Paris, PSL University, Sorbonne Université, Université de Paris, Paris, France, <sup>5</sup>Great Sand Dunes National Park and Preserve, National Park Service, Alamosa, CO, USA

**Abstract** Early-stage bedforms develop into mature dunes through complex interactions between wind, sand transport, and surface topography. Depending on varying environmental and wind conditions, the mechanisms driving dune formation and, ultimately, the shape of nascent dunes may differ markedly. In cases where sand availability is plentiful, the emergence and growth of dunes can be studied with a linear stability analysis of coupled transport and hydrodynamic equations. Until now, this analysis has only been applied using field evidence in unidirectional winds. However, in many areas of the world and on other planets, wind regimes are more often bimodal or multimodal. Here, we investigate field evidence of protodune formation under a bimodal wind regime by applying linear stability analysis to a developing protodune field. Employing recent development of the linear stability theory and experimental research, combined with in situ wind, sediment transport, and topographic measurements during a monthlong field campaign at Great Sand Dunes National Park, Colorado, USA, we predict the spatial characteristics (orientation and wavelength) and temporal evolution (growth rate and migration velocity) of a protodune field. We find that the theoretical predictions compare well with measured dunefield attributes as characterized by high-resolution Digital Elevation Models measured using repeat terrestrial laser scanning. Our findings suggest that linear stability analysis is a quantitative predictor of protodune development on sandy surfaces with a bimodal wind regime. This result is significant as it offers critical validation of the linear stability analysis for explaining the initiation and development of dunes toward maturity in a complex natural environment.

## 1. Introduction

The variability in sand dune patterns is, in part, due to complex interactions between fluid flow, bed morphology, and sediment transport. The coupling between flow and sediment transport controls dune morphology, and concurrently, there is a strong modification of airflow dynamics driven by dune topography (Walker & Nickling, 2002; Wiggs et al., 1996; Wiggs & Weaver, 2012). Although these interactions are well studied on mature dunes, we lack field observations of early-stage (proto)dunes because the small scale of relevant morphological features and associated flow processes are extremely difficult to measure (Kocurek et al., 2010).

The early stages of dune development involve localized sand deposition, which, under conditions of positive flow-transport-form feedback, leads to dune emergence. To understand the mechanisms of initial dune nucleation and subsequent growth, it is therefore necessary to quantify the relationships between flow, sediment transport, and morphology close to the surface. Although requisite process measurements are challenging on small bedforms, the quantification of these fundamental relationships on protodunes is crucial because of the importance this bedform type has as a precursor to fully developed dunes (Baddock et al., 2018; Claudin et al., 2013; Kocurek et al., 2010; Phillips et al., 2019).

At this small scale, a range of theoretical studies, laboratory experiments, and physically based models have established quantitative predictions of fluid dynamic and sand transport controls on bedform development for both subaqueous and aeolian environments (Andreotti et al., 2002, 2010; Durán et al., 2011; Fourrière et al., 2010; Richards, 1980; Sauermann et al., 2001). In recent decades, continuous dune models have been developed to describe the shape of barchan and transverse dunes in unidirectional wind

©2020. The Authors.

This is an open access article under the terms of the Creative Commons Attribution License, which permits use, distribution and reproduction in any medium, provided the original work is properly cited.

regimes (Andreotti et al., 2002; Parteli et al., 2006), and cellular automaton models have been used to study protodune (Nield, 2011) and dune dynamics (e.g., Eastwood et al., 2011; Narteau et al., 2009; Rozier & Narteau, 2014; Worman et al., 2013; Zhang et al., 2010). In addition, the emergence of dunes on an erodible sand bed has been investigated theoretically through linear stability analysis (Andreotti et al., 2002, 2012; Claudin & Andreotti, 2006; Colombini, 2004; Devauchelle et al., 2010; Kennedy, 1963; Kouakou & Lagr e, 2005; Richards, 1980). Linear stability analysis shows that small perturbations in surface morphology are amplified by an instability process that results from the balance between a destabilizing hydrodynamical mechanism and a countering stabilizing sediment transport mechanism. This leads eventually to bedform emergence, as discussed by Fourri re et al. (2010), Dur an et al. (2011), Ping et al. (2014), Courrech du Pont et al. (2014), and Gadal et al. (2020). Independent field measurements of the flow and sediment transport over a small bed perturbation have previously quantified the two mechanisms controlling the instability process (Andreotti et al., 2010; Claudin et al., 2013; Elbelrhiti et al., 2005). Only recently, however, Gadal et al. (2020) have shown the validity of the linear stability analysis to predict the emergence and growth of incipient dunes in natural aeolian environments characterized by unidirectional wind regimes.

Despite the often high variability of the transport-competent winds in the natural environment, only a few studies have focused attention on dune dynamics in multidirectional wind regimes (Gao et al., 2015; Rubin & Hunter, 1987; Rubin & Ikeda, 1990). These models show that under such environmental conditions, dunes tend to align to maximize the gross sand transport occurring normal to the crest (Rubin & Hunter, 1987). In the case of a bimodal wind regime, water tank experiments demonstrated that the crucial parameter controlling the dune orientation is the divergent angle (i.e., the angle between the two winds, Courrech du Pont et al., 2014; Parteli et al., 2009; Reffet et al., 2010). Parteli et al. (2009) and Reffet et al. (2010) observed that transverse dunes formed with divergent angles smaller than  $90^\circ$ , whereas longitudinal dunes were observed when the divergent angle is greater than  $90^\circ$ . While the dependence of dune orientation and pattern on wind regime has been validated only rarely in natural aeolian environments (e.g., Courrech du Pont et al., 2014; Gao et al., 2018; Ping et al., 2014), the linear stability analysis has recently been extended theoretically to multidirectional winds (Gadal et al., 2019)

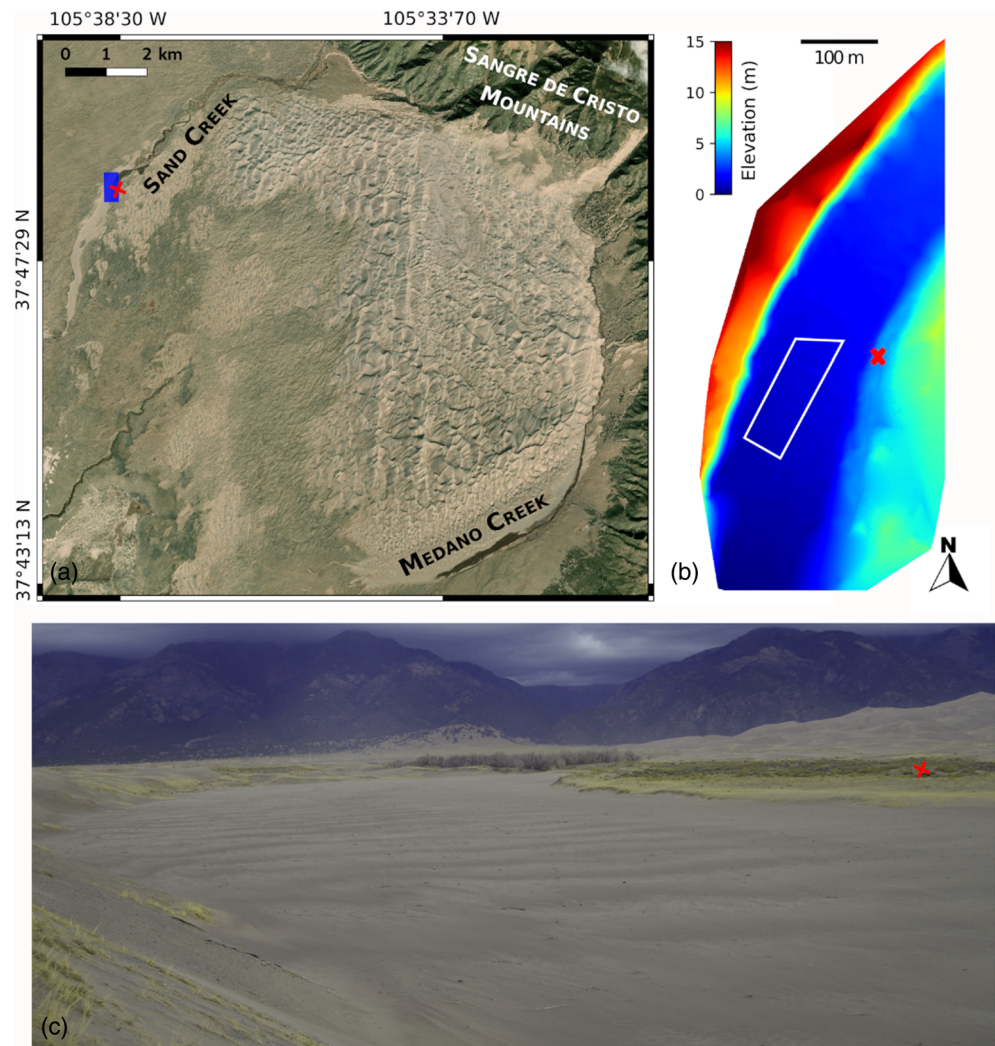
In this paper, we undertake the first investigation of the emergence of protodunes in a natural aeolian sandy environment through linear stability analysis in a bimodal wind regime. Our field site was located in the Great Sand Dunes National Park (Colorado, USA) and consisted of a flat sandy surface that facilitated the emergence of protodunes. During a 1-month field campaign, we measured the wind and sediment transport characteristics at the site and monitored the evolution of the growing bedforms through repeat terrestrial laser scanning (TLS). Using an adaptation of the linear stability analysis incorporating wind bimodality, we examined the measured wind and sand transport data to recover predicted information for dune orientation ( $\alpha$ ), wavelength ( $\lambda$ ), growth rate ( $\sigma$ ), and migration velocity ( $c$ ). We compared these predicted data to those measured with the TLS to evaluate the explanatory power of linear stability analysis for the initiation of dunes in a bimodal wind regime.

## 2. Methods

### 2.1. Field Description

The Great Sand Dunes National Park is located in the San Luis Valley, in south-central Colorado (USA). The prevailing southwesterly and westerly winds in the San Luis Valley transport sand toward the foot of the Sangre de Cristo mountains creating a complex dunefield system of transverse and barchanoid dunes (Madole et al., 2008). The dunefield is bounded by two ephemeral channels: Medano Creek in the southeast and Sand Creek in the northwest (Figure 1a). Each year in late spring and early summer snow melt feeds the two creeks such that there is a fluvial redistribution of sediment, resetting the creek beds to a flat surface (Valdez, 1996). This phenomenon helps establish these creek sites as a novel setting to investigate drivers of dune initiation and development because winds act on these wide, flat, sandy surfaces resulting in the annual development of protodunes on the beds of the channels. The characteristics of these creek sites make them suitable for landscape-scale experiments that are particularly well suited for validation and quantification purposes (Ping et al., 2014; Wilcock et al., 2008).

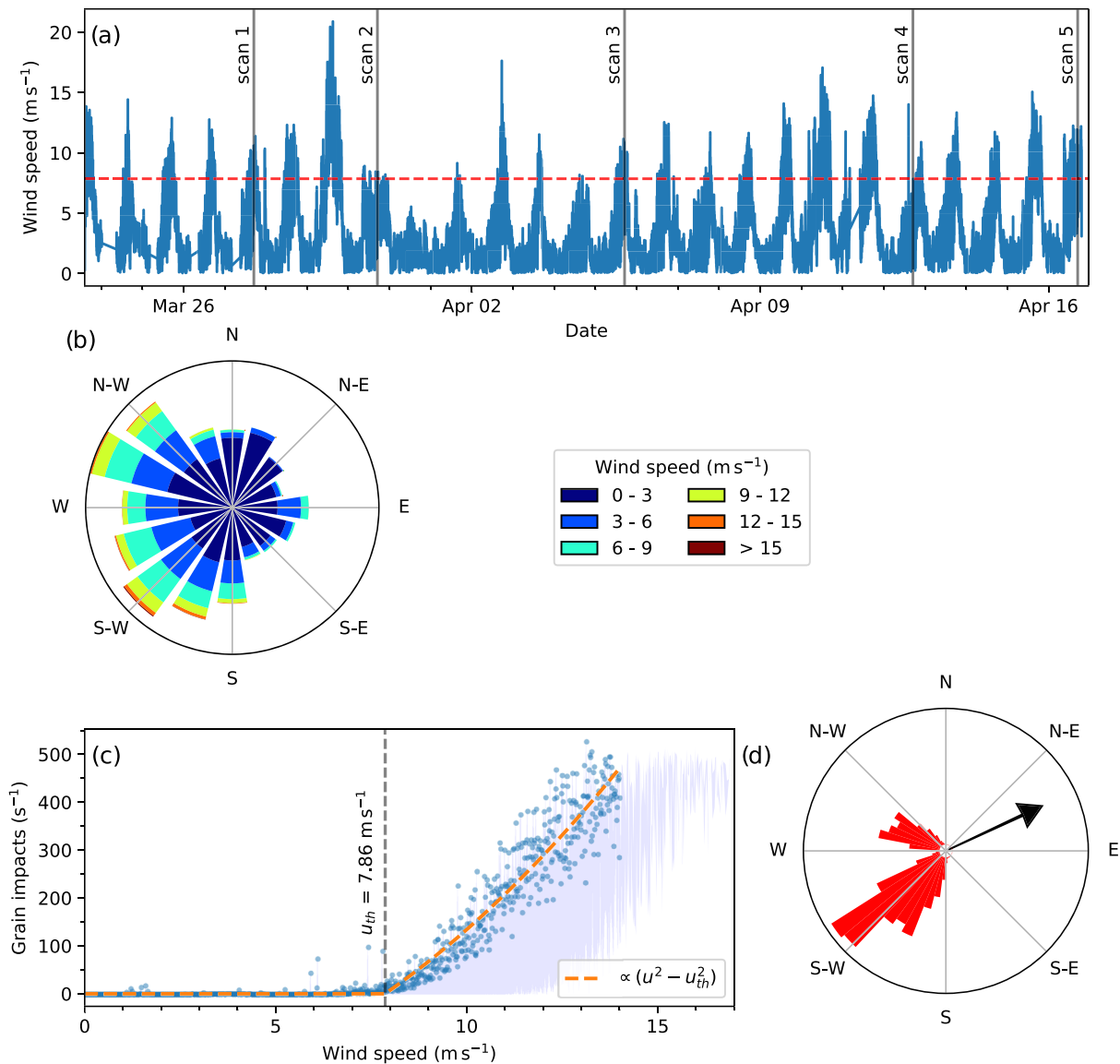
Our experimental field site was established at Sand Creek (Figure 1a). This is the more active of the two bounding channels, and so the resetting (flattening) of its bed by spring floodwater tends to be more extensive (Valdez, 1996).



**Figure 1.** Field characteristics. (a) Satellite image of the Great Sand Dunes National Park dunefield. The blue rectangle indicates the field site in Sand Creek (Source: Esri). (b) TLS-derived Digital Elevation Model of the Sand Creek study site. The white polygon shows the area used for the morphometric analysis of protodunes. (c) Photograph of the Sand Creek study site, looking toward the north from the western edge of the creek. Protodunes (the lighter gray strips of finer sand, 0.2 m high) can be seen extending W-E across the bed of the ephemeral channel. The red cross in each figure indicates the location of the TLS during survey measurements.

## 2.2. Measuring Wind and Sediment Transport Characteristics

Data were collected at the Sand Creek field site from 23 March to 16 April 2019 (24 days). For the duration of the experiment a temporary weather station was erected adjacent to the TLS measurement site (Figure 1c). Here wind speed and direction were measured at a height of 3.17 m using a Gill 2-D sonic anemometer with colocated measurements of saltation activity derived from a Sensit mass transport monitor (Gillette & Stockton, 1986; Stockton & Gillette, 1990). The anemometer and Sensit were connected to a Campbell CR800 Series data logger with data recorded at a frequency of 0.1 Hz. For each time step (10 s), we extracted mean wind speed  $u_i$  and wind direction  $\vec{x}_i$ . Using the wind velocity and Sensit records, we defined the threshold wind velocity for sand transport,  $u_{th}$ , by computing the maximum saltation counts occurring in each  $0.01\text{-m s}^{-1}$  bin of velocity data (Figure 2c). Employing the law-of-the-wall and assuming a logarithmic velocity increase with height above the surface, we also calculated the shear velocity,  $u_*$  (analogous to basal shear stress):



**Figure 2.** (a) Raw velocity data measured at  $z = 3.17$  m averaged over 10 s. The vertical grey lines represent the date of the TLS scans. The dashed red line is the threshold wind speed  $u_{th}$ . (b) Wind rose calculated from the wind speed and direction data measured by the 2-D sonic anemometer showing a bimodal wind regime with characteristic winds from  $217 \pm 15^\circ$  and  $299 \pm 10^\circ$ . (c) Relationship between sand transport (grain impacts recorded by the Sensit) and wind speed. The shaded area represents all data, the dots represent the maximum number of impacts for each  $0.01 \text{ m s}^{-1}$  bin of wind speed, and the dashed orange line is the fit with a quadratic law. (d) Sand flux rose, with sediment flux calculated by the transport law (Equation 2). The black arrow indicates the Resultant Drift Direction.

$$u_* = \frac{u(z)\kappa}{\ln\left(\frac{z}{z_0}\right)}, \quad (1)$$

where  $u$  is the wind velocity at height  $z$ ,  $\kappa = 0.4$  (the von-Kármán constant), and  $z_0$  is the aerodynamic roughness length, due to the transport layer, generally of the order of a millimeter (Claudin et al., 2013; Durán et al., 2011; Gadal et al., 2019).

Wind tunnel experiments have highlighted empirical relations between sand flux and shear velocity,  $u_*$  (Bagnold, 1937; Durán et al., 2011; Iversen & Rasmussen, 1999; Ungar & Haff, 1987). For low to moderate wind speeds, when the shear velocity  $u_*$  is higher than a threshold shear velocity  $u_{*th}$ , the sediment flux,

$Q_s$ , evolves quadratically on a sandy erodible surface (Andreotti, 2004; Creyssels et al., 2009; Ho et al., 2011; Pähitz & Durán, 2020; Ralaiarisoa et al., 2020; Rasmussen et al., 1996; Ungar & Haff, 1987),

$$Q_s = 25 \frac{\rho}{\rho_s} \sqrt{\frac{d}{g}} (u_*^2 - u_{*th}^2), \quad (2)$$

where  $d$  is the average grain diameter,  $\rho$  and  $\rho_s$  are, respectively, the air and sediment density, and  $g$  is the gravitational acceleration. To determine  $d$  and  $\rho_s$ , we collected surface samples of dune and interdune sand. The grain diameter was established using a laser granulometer (Malvern Mastersizer 3000 laser) and the density of the sand using a pycnometer.

To characterize the wind regime, we calculated the resultant drift potential (RDP), drift potential (DP), and the resultant drift direction (RDD), defined as the direction of the resultant sand flux (Bullard et al., 1996; Fryberger & Dean, 1979).

$$DP = \frac{\sum_{i=2}^N \|\vec{Q}_i\| \delta t_i}{\sum_{i=2}^N \delta t_i}, \quad (3)$$

$$RDP = \frac{\|\sum_{i=2}^N \vec{Q}_i\|}{\sum_{i=2}^N \delta t_i}, \quad (4)$$

where  $N$  is the angular sector (i.e., the wind direction for each  $1^\circ$  bin) and  $Q_i$  is the associated individual flux vector. The ratio of  $RDP/DP$  is a nondimensional number used to characterize the directional variability of the wind, where values closer to unity represent a more unidirectional wind regime.

### 2.3. Protodune Morphology

#### 2.3.1. Measuring Dynamic Topography

Throughout the period of the experiment high-resolution scans of the surface topography, repeated every 3–7 days, were undertaken using a Leica P50 Scanstation TLS on a tripod at a height of 1.5 m and with a resolution setting of 0.0016 m at 10 m for an instrument sensitivity of 1,000 m. Five scans were performed, respectively, on 27 and 30 March and 5, 12, and 16 April 2019. The placement of the TLS (see Figure 1) enabled measurement scans to span the entire width of the channel encompassing multiple bedforms along the channel long axis. The instrument placement also minimized both surface occlusion and the distance to the bedforms of interest (maximum distance of 200 m from the TLS). No human or animal disturbance of the surface was apparent during the measurement period. In order to measure the gradient of the channel bed in the absence of protodunes, a further TLS scan of the surface was carried out in November 2019 using a Leica C10 Scanstation TLS with a resolution setting of 0.001 m vertical and 0.005 m horizontal at 10 m. The surface measured in November 2019 had been reset by fluvial activity in the preceding summer which was extensive enough to inundate the full channel. In order to follow the temporal evolution of the developing protodunes, scans were aligned using five fixed targets established outside of the measurement area. This allowed us to achieve a mean absolute error of registered scans of 0.005 m across the entire March to November measurement period. A handheld GPS was used to orientate the registered surfaces to true north using the TLS location and a fixed target.

#### 2.3.2. TLS Postprocessing and Surface Detrending

Analysis of the TLS data involved extracting a rectangular section of measured points (approximately 340 m long and 55 m wide) along the centerline of the channel to facilitate the determination of protodune morphology and migration rates and also to eliminate the effect of the channel banks on the area under investigation (Figure 1b). Each extracted rectangle contained approximately 3.2 million measured data points. Point data were filtered to separate surface and active saltation points following the methods of Nield and Wiggs (2011) giving a mean surface point density of 775 points/m<sup>2</sup>. Surface points were gridded with a resolution of 0.1 m and interpolated using Matlab Natural Neighbor following the methods of Nield et al. (2013). Finally, surfaces were detrended for the underlying channel gradient ( $\sim 0.003$ ) by removing the smoothed topographic surface surveyed in November 2019 using a 15-m by 15-m moving window, following the methods of Hugenholz and Barchyn (2010), thus producing five detrended Digital Elevation Model (DEM) surfaces throughout the spring measurement period.

### 2.3.3. Calculation of the Protodune Morphometrics and Migration Rates

The time series of DEMs resulting from the TLS surveys included six complete protodune forms. We analyzed the DEMs, to measure the morphological and dynamic characteristics of the protodunes for comparison with those predicted by the linear stability analysis. The TLS-derived DEMs were inspected using a “peak-by-peak” analysis, to extract the spatial characteristics (wavelength and orientation) and temporal evolution (migration celerity and growth rate) of the protodune field. The “peak-by-peak” analysis consisted of extracting the peak positions (minimum and maximum) on seven transects perpendicular to the dune crest, with a regular across-channel spacing of 7 m between each transect. For each DEM, we used the position of the maximum peak of each protodune to calculate the orientation of each bedform and the distance between them. The displacement of the maximum peak between the first and last DEM allowed us to estimate the migration rate for each protodune. Finally, we calculated the variation in amplitude of each protodune using the same peak-by-peak method to determine growth rates (details are provided in the supporting information).

### 2.4. Mechanisms of Dune Instability

The bed instability that results in dune formation is a consequence of the interaction between sand bed, flow, and sediment transport (Andreotti et al., 2012; Devauchelle et al., 2010). Over a small topographic irregularity on a sandy surface, the simultaneous hydrodynamical effects of inertia and dissipation cause a phase advance of the surface shear stress (i.e., the maximum shear stress is shifted upwind of the crest, Claudin & Andreotti, 2006; Claudin et al., 2013; Durán et al., 2011; Jackson & Hunt, 1975). This phase advance can be mathematically characterized by two hydrodynamical parameters  $\mathcal{A}$ , which is in-phase with the topography, and  $\mathcal{B}$ , which is in-phase quadrature with the topography. This hydrodynamical mechanism represents a destabilizing process. In addition, the relaxation of the sediment flux toward an equilibrium value generates an additional spatial phase lag. This spatial lag is characterized by the saturation length,  $L_{\text{sat}}$ . In practice, the saturation length scales as the distance needed for one grain to be accelerated to the velocity of the wind (Claudin & Andreotti, 2006; Charru et al., 2013; Durán et al., 2011; Hersen et al., 2002; Pätz et al., 2013; Selmani et al., 2018). The prefactor of the scaling has been validated with wind tunnel experiments (Andreotti et al., 2010),

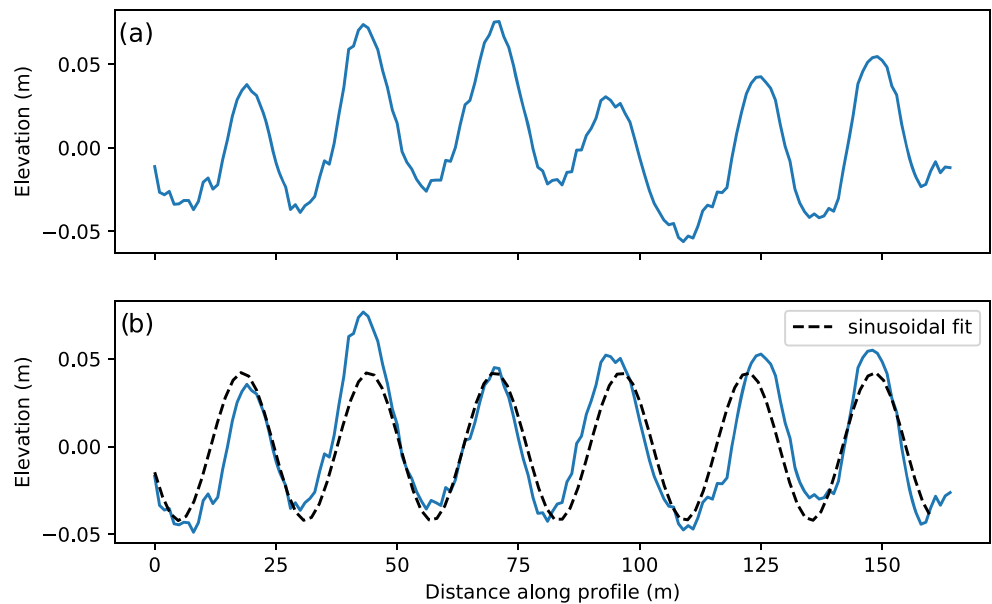
$$L_{\text{sat}} = 2.2 \frac{\rho_s d}{\rho} \quad (5)$$

The effect of the saturation length is such that the maximum sediment flux is shifted downwind of the maximum shear stress, representing a stabilizing process. The hydrodynamical (destabilizing) effect and the associated relaxation of the sediment flux (stabilizing effect) are the two main contributors to the phase shift and instability between topography and sediment flux (Fourrière et al., 2010). The crest of a protodune is therefore located in a deposition zone, a situation that induces its vertical growth (Kennedy, 1963; Naqshband et al., 2017). The aim of the linear stability analysis is to determine the characteristics (wavelength,  $\lambda$  and orientation,  $\alpha$ ) of the most unstable (growth) mode generated by the simultaneous effects of the stabilizing and destabilizing mechanisms. This can be achieved by solving the fundamental dispersion relations of growth rate,  $\sigma$ , and propagation velocity,  $c$  (Andreotti et al., 2012; Charru et al., 2013).

In the case of a bimodal wind regime such as that observed at Sand Creek (Figures 2b and 2d) the growth rate ( $\sigma_{\Sigma}$ ) and propagation velocity ( $\vec{c}_{\Sigma}$ ) can be expressed as the sum of the contribution of each effective wind (i.e., the wind above threshold that is associated with sand transport). Following Gadal et al. (2019), the dimensional equations read,

$$\sigma_{\Sigma}(\alpha, k) = \frac{1}{L_{\text{sat}}^2} \frac{\sum_i t_i \frac{Q_i u_{*i}^2}{u_{*i}^2 - u_{th*}^2} \sigma(u_{*i}, \alpha_i, k)}{\sum_i t_i} \quad (6)$$

$$\vec{c}_{\Sigma}(\alpha, k) = \frac{1}{L_{\text{sat}}} \left( \frac{\sum_i t_i \frac{Q_i u_{*i}^2}{u_{*i}^2 - u_{th*}^2} c(u_{*i}, \alpha_i, k)}{\sum_i t_i} \right) \frac{\vec{\mathbf{k}}}{\|\vec{\mathbf{k}}\|} \quad (7)$$



**Figure 3.** (a) Example of the raw topographic profile of the six studied protodunes (27 March 2019). (b) Detrended profiles of the six protodunes, the dashed line is a sinusoidal fit.

where  $\vec{k} = (k \cos \alpha, k \sin \alpha)$  is the wave vector;  $\alpha_i$  is the angle between the perpendicular to each wind and the dune orientation;  $t_i$ ,  $Q_i$ , and  $u_{*i}$  are, respectively, the time wind blew, the sediment flux, and the shear velocity associated with each wind, they act as weighting factors; and  $\sigma(u_{*i}, \alpha_i, k)$  and  $c(u_{*i}, \alpha_i, k)$  are the growth rate and the velocity propagation calculated for each wind (detailed calculation of these variables is described in the supporting information). The emerging wavelength and orientation are determined as those which maximize the growth rate.

### 3. Results

#### 3.1. Wind and Sediment Transport Characteristics

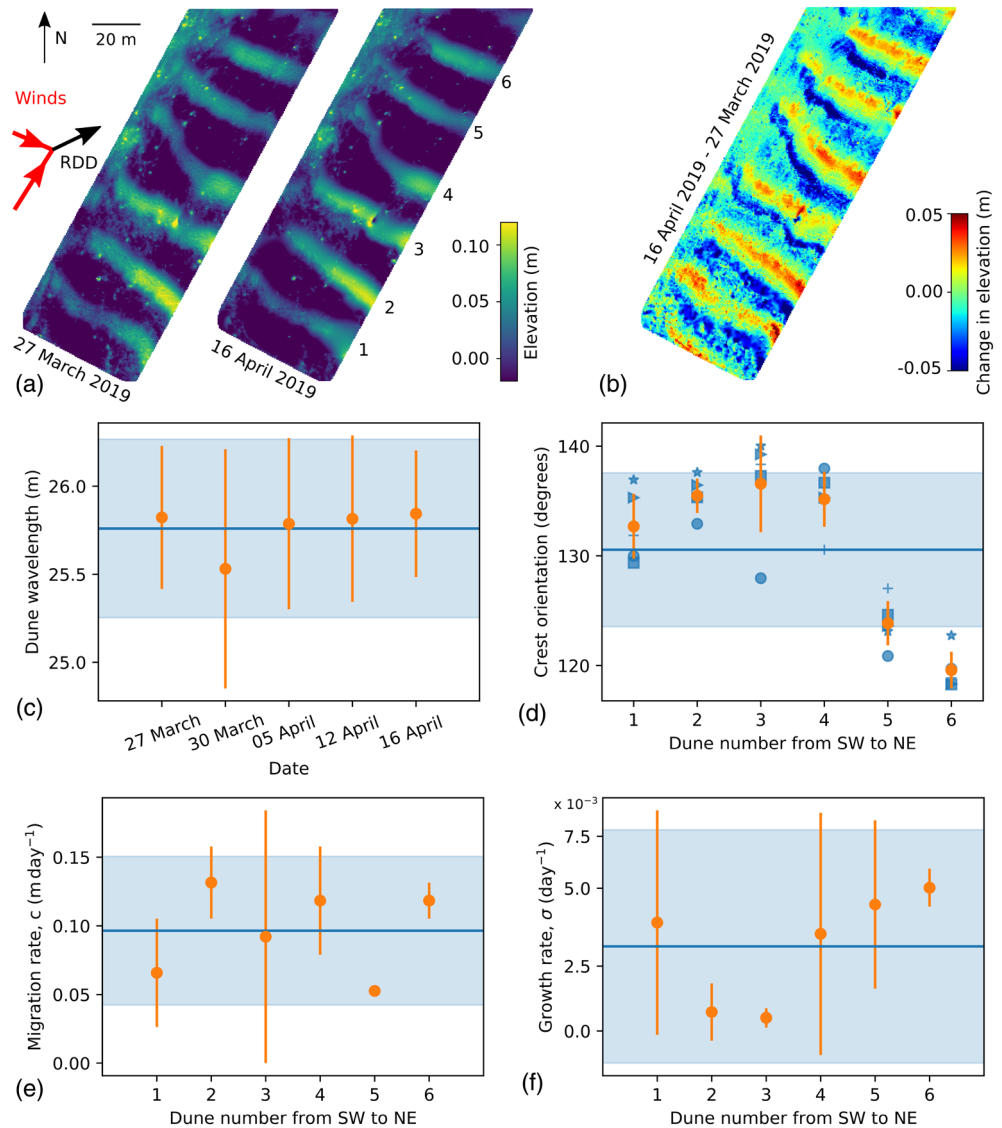
During the field campaign the wind speed, measured at a height of 3.70 m, varied between 0 and  $20 \text{ m s}^{-1}$  (Figure 2a), with direction varying mostly from between south and NW. The stronger, sand moving winds, however, came from two dominant directions, SW and NW (Figure 2b). By fitting a quadratic relationship between the wind speed and Sensit output (grain impacts), we determined the threshold wind velocity at 3.17-m height for sediment transport,  $u_{th} = 7.86 \pm 1.1 \text{ m s}^{-1}$  (Figure 2c). Using the law of wall (Equation 1) and assuming an aerodynamic roughness of 0.001 m (approximately 10% of the height of the sand transport layer, Claudin et al., 2013; Durán et al., 2011; Gadal et al., 2019), we calculated the threshold shear velocity  $u_{*th} = 0.39 \pm 0.05 \text{ m s}^{-1}$ .

Using measured values of sand grain diameter ( $0.45 \pm 0.07 \text{ mm}$ ) and density ( $2,650 \pm 54 \text{ kg m}^{-3}$ ) in Equation 2, we calculated sediment flux from each wind direction, as shown in Figure 2d. This figure shows that sediment flux originated almost exclusively from two directions, ( $221 \pm 15^\circ$  and  $303 \pm 10^\circ$ ) corresponding with the bimodality evident in the wind directional data. These flux determinations allowed the characterization of the wind regime using DP and RDP (Equations 3 and 4). For our study, we found  $RDP/DP = 0.72$  with a  $RDD = 65^\circ$ . The  $RDP/DP$  ratio indicates a moderate bidirectional wind and sediment transport trend (Fryberger & Dean, 1979; Pearce & Walker, 2005; Tsoar, 2005).

#### 3.2. Protodune Morphodynamics From Topographic Surveys

From the TLS-derived DEMs we extracted six protodune profiles (Figure 3). The protodunes have very low aspect ratios and do not exhibit an avalanche slope (Figure 3a). Furthermore, the detrended profile can be approximated by a sine wave (Figure 3b). These two characteristics are necessary ingredients for the validity

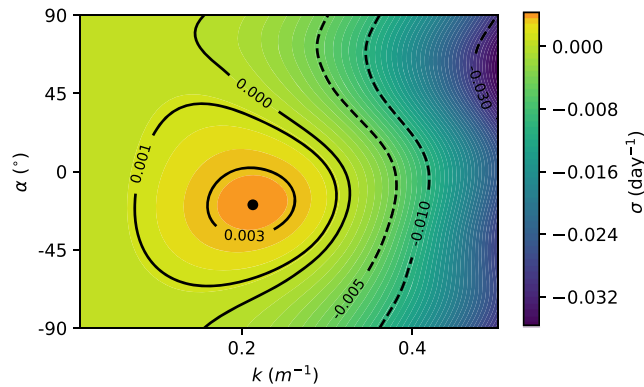




**Figure 4.** (a) DEMs of the field area on 27 March 2019 and 16 April 2019, protodunes are labeled from 1 to 6. (b) Elevation difference map between 27 March 2019 and 16 April 2019. (c) Measured bedform wavelength estimated from each DEM, blue line is the average wavelength, and shaded area is the standard deviation. (d) Crest orientation of each measured protodune (1 to 6), on each DEM (blue symbol) and average crest orientation (orange dot). (e) Measured migration rate of each protodune. (f) Measured height increase (i.e., growth rate). Blue lines in c–f represent mean calculated values.

of the linear stability analysis (Andreotti et al., 2012; Claudin et al., 2013; Devauchelle et al., 2010; Gadal et al., 2019, 2020).

From the surface elevation data we calculated an average wavelength of  $25.7 \pm 0.5$  m (Figures 4a and 4c, blue line) and an average orientation of  $131 \pm 7^\circ$  for the protodune bedforms (Figures 4a and 4d, blue line). The protodune migration rate over the observation period was  $0.096 \pm 0.054$  m day<sup>-1</sup> (Figures 4b and 4e, blue line). Finally, the increase in protodune amplitude gave a growth rate of,  $\sigma = 0.003 \pm 0.005$  day<sup>-1</sup> (Figures 4b and 4f, blue line). Within the protodune field there were small variations in wavelength, orientation, growth, and migration rates that likely relate to the nuances of the surface sediment availability. No spatial trends in wavelength, orientation, growth, and migration rate were observed perpendicular to the channel direction (i.e., between the eastern and western transects), and the overall morphological characteristics of the six bedforms were internally consistent and within the standard deviation of the measurements.



**Figure 5.** Growth rate  $\sigma_2$  as a function of the wavenumber  $k$  and the orientation  $\alpha$  of the bed perturbation calculated using Equation 6 for  $\mathcal{A} = 3.4$  and  $\mathcal{B} = 2$ . The black dot represents the maximum growth rate.

### 3.3. Linear Stability Analysis

Our measurements of wind direction, sediment characteristics, and sand flux from the field were used to calculate the most unstable mode of the linear stability analysis. We solved Equation 6 for values of  $k \in [0, 0.5]$  and  $\alpha \in [-90^\circ, +90^\circ]$ , with  $L_{sat} \approx 2 \pm 0.2$  m (Equation 5) and values of  $\mathcal{A}$  and  $\mathcal{B}$  ranging from  $[3.2, 4]$  and  $[1.6, 2.1]$ , respectively (See supporting information). We obtained a maximum growth rate of  $0.004 \pm 0.002$  day<sup>-1</sup>, reached for a wave number  $k_{max} = 0.23 \pm 0.07$  m<sup>-1</sup> and an orientation angle  $\alpha_{max} = -19 \pm 4^\circ$  (Figure 5). This corresponds to a wavelength  $\lambda = 2\pi/k = 27 \pm 10$  m and an orientation of the dune pattern of  $136 \pm 4^\circ$  (anticlockwise, with  $0^\circ$  as north). Additionally, computation of the migration velocity of the most unstable mode using Equation 7 and the values of  $k_{max}$  and  $\alpha_{max}$  previously determined produces a maximum migration  $c = 0.12 \pm 0.03$  m day<sup>-1</sup>.

## 4. Discussion

Our computed statistics resulting from the linear stability analysis of spatial (wavelength and orientation) and temporal (growth rate and migration velocity) characteristics measured in the field can be compared to previous studies that have characterized dune orientation as a function of sand availability and bimodal wind regime (Courrech du Pont et al., 2014; Gao et al., 2015; Ping et al., 2014; Rubin & Hunter, 1987; Rubin & Ikeda, 1990; Werner & Kocurek, 1999). In these studies three parameters are relevant: sand availability, the divergent angle between the two formative winds ( $\theta$ ), and the transport ratio ( $N$ , the ratio between the sand fluxes that are associated with the two different wind directions) defined as

$$N = \frac{Q_1 t_1}{Q_2 t_2}, \quad (8)$$

where  $Q_1$  and  $Q_2$  are the sediment fluxes from each direction and  $t_1$  and  $t_2$  are the duration of each wind. In the case of infinite sand availability, models such as Rubin and Hunter (1987) predict that for a divergence angle smaller than  $90^\circ$  (as we measured in Sand Creek), the dune crests are more likely to be perpendicular to the resultant sand flux (transverse dunes). In contrast, where the divergent angle is larger than  $90^\circ$  (as observed in the Tengger Desert by Ping et al., 2014), the Rubin and Hunter (1987) model suggests that either longitudinal or oblique dunes form. Where the transport ratio ( $N$ ) is 1, dune crests should align with the resultant sand flux (longitudinal dune), while in the case of a transport ratio higher than 1, the Rubin and Hunter (1987) model suggests that oblique dunes will form. Subsequent models such as those of Werner and Kocurek (1999) and Courrech du Pont et al. (2014) show a smooth transition between transverse and oblique bedforms, whereas a sharp transition occurs according to the model of Rubin and Hunter (1987). The smoothness of this transition depends on the transport ratio,  $N$ , and the feedback of dune topography on flow strength, computed as the flux-up ratio,  $\gamma$ , which directly quantifies the increase in sand flux (Courrech du Pont et al., 2014; Gao et al., 2015). In the linear regime, dunes do not exhibit an avalanche slope, and the majority of the sediment passing the crest escapes the dune, consequently the flux-up ratio tends toward infinity. The influence of the flux-up ratio is stronger for a divergent angle,  $\theta \approx 90^\circ$ .

In the case of the Sand Creek field site, the mean orientation of the two winds of  $\alpha_1 \approx 221 \pm 15^\circ$  and  $\alpha_2 \approx 303 \pm 10^\circ$  creates a divergent angle of  $\theta \approx 82^\circ$ , and we calculated the transport ratio  $N = 2.1$ . Additionally, the protodunes show a smooth profile (without an avalanche slope) so that the equivalent flux-up ratio,  $\gamma$ , can be considered as infinity (Courrech du Pont et al., 2014; Gadal et al., 2019; Gao et al., 2015). Using the wind values as an input for the model of Courrech du Pont et al. (2014), we find a dune orientation of  $138^\circ$ , which corresponds to an angle between the resultant flux and the dune pattern of  $73^\circ$ . According to the numerical simulation of Gao et al. (2015), an infinite flux-up ratio and a transport ratio higher than 1 smooth the transition from transverse to oblique, consequently the angle between the dune orientation and the resultant sand transport direction moves from  $90^\circ$  to an acute angle ( $> 70^\circ$ ). Using the linear stability analysis at

**Table 1**  
*Morphological and Dynamical Characteristics of the Protodune Field, Measured From the Surface DEMs and Calculated With the Linear Stability Analysis Under a Bidirectional and Unidirectional Wind Regime*

	Wavelength $\lambda$ (m)	Dune orientation (degrees)	Growth rate $\sigma$ (day <sup>-1</sup> )	Migration rate $c$ (m day <sup>-1</sup> )
Morphological measurements from TLS-derived DEM	25.7 ± 0.5	131 ± 7	0.003 ± 0.005	0.096 ± 0.054
Predictions under a bidirectional wind	27 ± 10	136 ± 4	0.004 ± 0.002	0.12 ± 0.03
Predictions under a unidirectional SW wind	23 ± 8	Perpendicular to the wind direction (131 ± 3)	0.01 ± 0.003	0.22 ± 0.06

the Sand Creek field site, we calculated an angle between the protodune orientation and the resultant sand transport direction of 71°, a value within the range of that predicted by the Gao et al. (2015) model [70°, 90°]. This result complements the work of Ping et al. (2014) as for the first time we observe the formation of oblique dunes under an acute bimodal wind regime.

To determine the significance and impact of the wind regime bimodality on the pattern of protodune development, we used the linear stability analysis to calculate the morphological and dynamic characteristics of the protodune with the assumption of only a single effective wind direction from the SW. In this unidirectional case the wavelength of the protodunes was calculated to be of the order of 23 m with an orientation of 131°, celerity 0.22 m day<sup>-1</sup>, and a growth rate of 0.01 day<sup>-1</sup>. For ease of comparison Table 1 presents a summary of the measured spatial and temporal characteristics of the protodune field and those predicted by the linear stability analysis under both bidirectional and unidirectional wind regimes.

This comparison highlights the importance of the secondary wind in the formation of the Sand Creek protodune field. As predicted by the analysis of Gadal et al. (2019), the presence of the NW secondary wind generated a deviation of the flow; consequently, a transverse component of the sediment transport appears. The transverse component of the sediment transport has a stabilizing effect which produced an increase in the wavelength and reduced both the protodune migration and growth rates in comparison with a dominant unimodal wind (Gadal et al., 2019).

## 5. Conclusion

Despite recent theoretical and experimental advances in our understanding of protodune initiation, field investigations and tests remain rare and challenging. The experiment presented here is the first field-based study testing the veracity of an extended linear stability analysis for dune initiation in a bimodal wind regime (Gadal et al., 2019).

Using measured wind and sand transport data as an input to the linear stability analysis, we found a strong quantitative agreement between the output of the bed instability model and measured field characteristics. Our results validate previous theoretical studies that have highlighted the importance of secondary wind flows on dune orientation (Courrech du Pont et al., 2014; Gao et al., 2015; Rubin & Hunter, 1987; Rubin & Ikeda, 1990; Werner & Kocurek, 1999). Further, by simulating the evolution of the same dune field under a unidirectional wind, we show that the presence of a secondary wind in a bimodal regime has the impact of reducing dune growth and migration rates while increasing dune wavelength.

Aside from the quantitative agreement between the theoretical model and the field characteristics provided by this study, our analysis offers confirmation of the validity of the linear stability analysis as a solution for determining patterns of dune emergence and growth on sandy, erodible surfaces. The strong relationship between wind regime and dune morphology substantiated in this study also offers confidence in analyses of the reverse problem, where determination of the wind regime in a natural environment is required based on evidence provided by dune morphology. Such a requirement is widespread in analyses of extraterrestrial dune surfaces where wind data are absent (e.g., Durán Vinent et al., 2019; Fernandez-Cascales et al., 2018; Jia et al., 2017).

While our analysis provides the first field validation of the linear stability analysis in bimodal wind regimes, an important step in furthering our understanding of dune initiation processes, it suffers from some restrictions due to the lack of field testing of key model parameters. In our study, the parameters  $\mathcal{A}$  and  $\mathcal{B}$  required adjustment to obtain agreement between the outputs of the linear stability model and the measured morphological characteristics. Our understanding of these parameters needs to be quantitatively strengthened with further field and experimental data focusing on measurements of the spatial shift between the maximum shear velocity and the crest. Currently, the only data available for the determination of  $\mathcal{A}$  and  $\mathcal{B}$  are from the field measurements of Claudin et al. (2013). Further, the calculation of the saturation length  $L_{\text{sat}}$  requires additional field quantification with measurements of the spatial shift between maximum shear velocity and resulting maximum sand flux. With the addition of such field and experimental data to refinements of the linear stability analysis, we are confident that our understanding of dune initiation processes in complex and natural wind regimes can be significantly advanced.

### Data Availability Statement

The data used in this manuscript can be found in the NERC National Geological Data Center (<https://doi.org/10.5285/46af71db-1caa-4c88-bd6a-c9724dd90df8>). Supplementary figures and text can be found in the supporting information.

### Acknowledgments

This work was funded by the TOAD (The Origin of Aeolian Dunes) project (the Natural Environment Research Council, UK and the National Science Foundation, USA; NE/R010196NSFGEO-NERC, NSF-GEO-1829541 and NSF-GEO-1829513). Research was undertaken at GSD under a Scientific Research and Collection permit GRSA-2018-SCI-004, and we are very grateful for field, access, and logistical support from F. Bunch and other park staff. Data processing used IRIDIS Southampton Computing Facility. We thank R. Ewing for the use of his Sensit instrument; G. Kocurek, R. Reynolds, A. Gunn, and R. Ewing for field assistance; and C. Gadal and C. Narteau for fruitful discussions about the linear stability analysis. J. M. Nield gratefully acknowledges the Department of Geology and Geophysics, Texas A&M University, where she was supported by a Michel T Halbouty Visiting Chair during the field campaign. We thank the anonymous reviewers for their insightful comments and suggestions.

### References

- Andreotti, B. (2004). A two-species model of aeolian sand transport. *Journal of Fluid Mechanics*, *510*, 47–70.
- Andreotti, B., Claudin, P., Devauchelle, O., Durán, O., & Fourrière, A. (2012). Bedforms in a turbulent stream: Ripples, chevrons and antidunes. *Journal of Fluid Mechanics*, *690*, 94–128.
- Andreotti, B., Claudin, P., & Douady, S. (2002). Selection of dune shapes and velocities part 2: A two-dimensional modelling. *The European Physical Journal B-Condensed Matter and Complex Systems*, *28*(3), 341–352.
- Andreotti, B., Claudin, P., & Pouliquen, O. (2010). Measurements of the aeolian sand transport saturation length. *Geomorphology*, *123*(3–4), 343–348.
- Baddock, M. C., Nield, J. M., & Wiggs, G. F. S. (2018). Early-stage aeolian protodunes: Bedform development and sand transport dynamics. *Earth Surface Processes and Landforms*, *43*(1), 339–346.
- Bagnold, R. A. (1937). The transport of sand by wind. *The Geographical Journal*, *89*(5), 409–438.
- Bullard, J. E., Thomas, D. S. G., Livingstone, I., & Wiggs, G. F. S. (1996). Wind energy variations in the southwestern Kalahari desert and implications for linear dunefield activity. *Earth Surface Processes and Landforms*, *21*(3), 263–278.
- Charru, F., Andreotti, B., & Claudin, P. (2013). Sand ripples and dunes. *Annual Review of Fluid Mechanics*, *45*, 469–493.
- Claudin, P., & Andreotti, B. (2006). A scaling law for aeolian dunes on Mars, Venus, Earth, and for subaqueous ripples. *Earth and Planetary Science Letters*, *252*(1–2), 30–44.
- Claudin, P., Wiggs, G. F. S., & Andreotti, B. (2013). Field evidence for the upwind velocity shift at the crest of low dunes. *Boundary-Layer Meteorology*, *148*(1), 195–206.
- Colombini, M. (2004). Revisiting the linear theory of sand dune formation. *Journal of Fluid Mechanics*, *502*, 1–16.
- Courrech du Pont, S., Narteau, C., & Gao, X. (2014). Two modes for dune orientation. *Geology*, *42*(9), 743–746.
- Creyssels, M., Dupont, P., El Moctar, A. O., Valance, A., Cantat, I., Jenkins, J. T., et al. (2009). Saltating particles in a turbulent boundary layer: Experiment and theory. *Journal of Fluid Mechanics*, *625*, 47.
- Devauchelle, O., Malverti, L., Lajeunesse, E., Lagrée, P.-Y., Jossierand, C., & Thu-Lam, K.-D. N. (2010). Stability of bedforms in laminar flows with free surface: From bars to ripples. *Journal of Fluid Mechanics*, *642*, 329–348.
- Durán, O., Claudin, P., & Andreotti, B. (2011). On aeolian transport: Grain-scale interactions, dynamical mechanisms and scaling laws. *Aeolian Research*, *3*(3), 243–270.
- Durán Vinent, O., Andreotti, B., Claudin, P., & Winter, C. (2019). A unified model of ripples and dunes in water and planetary environments. *Nature Geoscience*, *12*(5), 345–350.
- Eastwood, E., Nield, J., Baas, A., & Kocurek, G. (2011). Modelling controls on aeolian dune-field pattern evolution. *Sedimentology*, *58*(6), 1391–1406.
- Elbelrhiti, H., Claudin, P., & Andreotti, B. (2005). Field evidence for surface-wave-induced instability of sand dunes. *Nature*, *437*(7059), 720.
- Fernandez-Cascales, L., Lucas, A., Rodriguez, S., Gao, X., Spiga, A., & Narteau, C. (2018). First quantification of relationship between dune orientation and sediment availability, Olympia Undae, Mars. *Earth and Planetary Science Letters*, *489*, 241–250.
- Fourrière, A., Claudin, P., & Andreotti, B. (2010). Bedforms in a turbulent stream: Formation of ripples by primary linear instability and of dunes by nonlinear pattern coarsening. *Journal of Fluid Mechanics*, *649*, 287–328.
- Fryberger, S. G., & Dean, G. (1979). Dune forms and wind regime. In *A study of global sand seas* (Vol. 1052, pp. 137–169). US Government Printing Office Washington.
- Gadal, C., Narteau, C., du Pont, S. C., Rozier, O., & Claudin, P. (2019). Incipient bedforms in a bidirectional wind regime. *Journal of Fluid Mechanics*, *862*, 490–516.
- Gadal, C., Narteau, C., Ewing, R. C., Gunn, A., Jerolmack, D., Andreotti, B., & Claudin, P. (2020). Spatial and temporal development of incipient dunes. *Geophysical Research Letters*, *47*, e2020GL088919. <https://doi.org/10.1029/2020GL088919>
- Gao, X., Gadal, C., Rozier, O., & Narteau, C. (2018). Morphodynamics of barchan and dome dunes under variable wind regimes. *Geology*, *46*(9), 743–746.
- Gao, X., Narteau, C., Rozier, O., & Courrech du Pont, S. (2015). Phase diagrams of dune shape and orientation depending on sand availability. *Scientific Reports*, *5*(1), 1–12.

- Gillette, D. A., & Stockton, P. H. (1986). Mass momentum and kinetic energy fluxes of saltating particles. In *Annual symposium of geomorphology* (Vol. 17, pp. 35–56). Abington, UK: Taylor & Francis Group.
- Hersen, P., Douady, S., & Andreotti, B. (2002). Relevant length scale of barchan dunes. *Physical Review Letters*, *89*(26), 264301.
- Ho, T. D., Valance, A., Dupont, P., & El Moctar, A. O. (2011). Scaling laws in aeolian sand transport. *Physical Review Letters*, *106*(9), 94501.
- Hugenholtz, C. H., & Barchyn, T. E. (2010). Spatial analysis of sand dunes with a new global topographic dataset: New approaches and opportunities. *Earth Surface Processes and Landforms*, *35*(8), 986–992.
- Iversen, J. D., & Rasmussen, K. R. (1999). The effect of wind speed and bed slope on sand transport. *Sedimentology*, *46*(4), 723–731.
- Jackson, P. S., & Hunt, J. C. R. (1975). Turbulent wind flow over a low hill. *Quarterly Journal of the Royal Meteorological Society*, *101*(430), 929–955.
- Jia, P., Andreotti, B., & Claudin, P. (2017). Giant ripples on comet 67P/Churyumov–Gerasimenko sculpted by sunset thermal wind. *Proceedings of the National Academy of Sciences*, *114*(10), 2509–2514.
- Kennedy, J. F. (1963). The mechanics of dunes and antidunes in erodible-bed channels. *Journal of Fluid mechanics*, *16*(4), 521–544.
- Kocurek, G., Ewing, R. C., & Mohrig, D. (2010). How do bedform patterns arise? New views on the role of bedform interactions within a set of boundary conditions. *Earth Surface Processes and Landforms*, *35*(1), 51–63.
- Kouakou, K. K. J., & Lagrée, P.-Y. (2005). Stability of an erodible bed in various shear flows. *The European Physical Journal B-Condensed Matter and Complex Systems*, *47*(1), 115–125.
- Madole, R. F., Romig, J. H., Aleinikoff, J. N., VanSistine, D. P., & Yacob, E. Y. (2008). On the origin and age of the Great Sand Dunes, Colorado. *Geomorphology*, *99*(1–4), 99–119.
- Naqshband, S., Hoitink, A. J. F., McElroy, B., Hurther, D., & Hulscher, S. J. M. H. (2017). A sharp view on river dune transition to upper stage plane bed. *Geophysical Research Letters*, *44*, 11–437. <https://doi.org/10.1002/2017GL075906>
- Narteau, C., Zhang, D., Rozier, O., & Claudin, P. (2009). Setting the length and time scales of a cellular automaton dune model from the analysis of superimposed bed forms. *Journal of Geophysical Research*, *114*, F03006. <https://doi.org/10.1029/2008JF001127>
- Nield, J. M. (2011). Surface moisture-induced feedback in aeolian environments. *Geology*, *39*(10), 915–918.
- Nield, J. M., King, J., Wiggs, G. F. S., Leyland, J., Bryant, R. G., Chiverrell, R. C., et al. (2013). Estimating aerodynamic roughness over complex surface terrain. *Journal of Geophysical Research: Atmospheres*, *118*, 12,948–12,961. <https://doi.org/10.1002/2013JD020632>
- Nield, J. M., & Wiggs, G. F. S. (2011). The application of terrestrial laser scanning to aeolian saltation cloud measurement and its response to changing surface moisture. *Earth Surface Processes and Landforms*, *36*(2), 273–278.
- Pächt, T., & Durán, O. (2020). Unification of aeolian and fluvial sediment transport rate from granular physics. *Physical Review Letters*, *124*(16), 168001.
- Pächt, T., Kok, J. F., Parteli, E. J. R., & Herrmann, H. J. (2013). Flux saturation length of sediment transport. *Physical Review Letters*, *111*(21), 218002.
- Parteli, E. J. R., Durán, O., Tsoar, H., Schwämmle, V., & Herrmann, H. J. (2009). Dune formation under bimodal winds. *Proceedings of the National Academy of Sciences*, *106*(52), 22,085–22,089.
- Parteli, E. J. R., Schwämmle, V., Herrmann, H. J., Monteiro, L. H. U., & Maia, L. P. (2006). Profile measurement and simulation of a transverse dune field in the Lençóis Maranhenses. *Geomorphology*, *81*(1–2), 29–42.
- Pearce, K. I., & Walker, I. J. (2005). Frequency and magnitude biases in the ‘fryberger’ model, with implications for characterizing geomorphically effective winds. *Geomorphology*, *68*(1–2), 39–55.
- Phillips, J. D., Ewing, R. C., Bowling, R., Weymer, B. A., Barrineau, P., Nittrouer, J. A., & Everett, M. E. (2019). Low-angle eolian deposits formed by protodune migration, and insights into slipface development at white sands dune field, New Mexico. *Aeolian Research*, *36*, 9–26.
- Ping, L., Narteau, C., Dong, Z., Zhang, Z., & Courrech du Pont, S. (2014). Emergence of oblique dunes in a landscape-scale experiment. *Nature Geoscience*, *7*(2), 99–103.
- Ralairisoa, J. L., Besnard, J. B., Furiéri, B., Dupont, P., El Moctar, A. O., Naaim-Bouvet, F., & Valance, A. (2020). Transition from saltation to collisional regime in windblown sand. *Physical Review Letters*, *124*(19), 198501.
- Rasmussen, K. R., Iversen, J. D., & Rautahemio, P. (1996). Saltation and wind-flow interaction in a variable slope wind tunnel. *Geomorphology*, *17*(1–3), 19–28.
- Reffet, E., Courrech du Pont, S., Hersen, P., & Douady, S. (2010). Formation and stability of transverse and longitudinal sand dunes. *Geology*, *38*(6), 491–494.
- Richards, K. J. (1980). The formation of ripples and dunes on an erodible bed. *Journal of Fluid Mechanics*, *99*(3), 597–618.
- Rozier, O., & Narteau, C. (2014). A real-space cellular automaton laboratory. *Earth Surface Processes and Landforms*, *39*(1), 98–109.
- Rubin, D. M., & Hunter, R. E. (1987). Bedform alignment in directionally varying flows. *Science*, *237*(4812), 276–278.
- Rubin, D. M., & Ikeda, H. (1990). Flume experiments on the alignment of transverse, oblique, and longitudinal dunes in directionally varying flows. *Sedimentology*, *37*(4), 673–684.
- Sauermann, G., Kroy, K., & Herrmann, H. J. (2001). Continuum saltation model for sand dunes. *Physical Review E*, *64*(3), 31305.
- Selmani, H., Valance, A., Ould El Moctar, A., Dupont, P., & Zegadi, R. (2018). Aeolian sand transport in out-of-equilibrium regimes. *Geophysical Research Letters*, *45*, 1838–1844. <https://doi.org/10.1002/2017GL076937>
- Stockton, P. H., & Gillette, D. A. (1990). Field measurement of the sheltering effect of vegetation on erodible land surfaces. *Land Degradation & Development*, *2*(2), 77–85.
- Tsoar, H. (2005). Sand dunes mobility and stability in relation to climate. *Physica A: Statistical Mechanics and its Applications*, *357*(1), 50–56.
- Ungar, J. E., & Haff, P. K. (1987). Steady state saltation in air. *Sedimentology*, *34*(2), 289–299.
- Valdez, A. D. (1996). *The role of streams in the development of the great sand dunes and their connection with the hydrologic cycle*. Mosca, CO: Great Sand Dunes National Monument. Retrieved from <http://npshistory.com/publications/grsa/stream-roles.pdf>
- Walker, I. J., & Nickling, W. G. (2002). Dynamics of secondary airflow and sediment transport over and in the lee of transverse dunes. *Progress in Physical Geography*, *26*(1), 47–75.
- Werner, B. T., & Kocurek, G. (1999). Bedform spacing from defect dynamics. *Geology*, *27*(8), 727–730.
- Wiggs, G. F. S., Livingstone, I., & Warren, A. (1996). The role of streamline curvature in sand dune dynamics: Evidence from field and wind tunnel measurements. *Geomorphology*, *17*(1–3), 29–46.
- Wiggs, G. F. S., & Weaver, C. M. (2012). Turbulent flow structures and aeolian sediment transport over a barchan sand dune. *Geophysical Research Letters*, *39*, L05404. <https://doi.org/10.1029/2012GL050847>

- Wilcock, P. R., Orr, C. H., & Marr, J. D. G. (2008). The need for full-scale experiments in river science. *Eos, Transactions American Geophysical Union*, *89*(1), 6–6.
- Worman, S. L., Murray, A. B., Littlewood, R., Andreotti, B., & Claudin, P. (2013). Modeling emergent large-scale structures of barchan dune fields. *Geology*, *41*(10), 1059–1062.
- Zhang, D., Narteau, C., & Rozier, O. (2010). Morphodynamics of barchan and transverse dunes using a cellular automaton model. *Journal of Geophysical Research*, *115*, F03041. <https://doi.org/10.1029/2009JF001620>