



**HAL**  
open science

## Pharmacokinetics and pharmacodynamics of hydroxychloroquine in hospitalized patients with COVID-19

Noel Zahr, Saïk Urien, Benoit Llopis, Valerie Pourcher, Olivier Paccoud, Alexandre Bleibtreu, Julien Mayaux, Estelle Gandjbakhch, Guillaume Hekemian, Alain Combes, et al.

► **To cite this version:**

Noel Zahr, Saïk Urien, Benoit Llopis, Valerie Pourcher, Olivier Paccoud, et al.. Pharmacokinetics and pharmacodynamics of hydroxychloroquine in hospitalized patients with COVID-19. *Alternative and Complementary Therapies*, In press, 10.1016/j.therap.2021.01.056 . hal-03127389

**HAL Id: hal-03127389**

**<https://hal.sorbonne-universite.fr/hal-03127389>**

Submitted on 1 Feb 2021

**HAL** is a multi-disciplinary open access archive for the deposit and dissemination of scientific research documents, whether they are published or not. The documents may come from teaching and research institutions in France or abroad, or from public or private research centers.

L'archive ouverte pluridisciplinaire **HAL**, est destinée au dépôt et à la diffusion de documents scientifiques de niveau recherche, publiés ou non, émanant des établissements d'enseignement et de recherche français ou étrangers, des laboratoires publics ou privés.

# Pharmacokinetics and Pharmacodynamics of Hydroxychloroquine in Hospitalized Patients with COVID-19

Noël Zahr <sup>1\*‡</sup>, Saik Urien <sup>2‡</sup>, Benoit Llopis <sup>1</sup>, Valérie Pourcher <sup>3</sup>, Olivier Paccoud <sup>3</sup>, Alexandre Bleibtreu <sup>3</sup>, Julien Mayaux <sup>4</sup>, Estelle Gandjbakhch <sup>5</sup>, Guillaume Hekemian <sup>6</sup>, Alain Combes <sup>6</sup>, Olivier Benveniste <sup>7</sup>, David Saadoun <sup>7</sup>, Yves Allenbach <sup>7</sup>, Bruno Pinna <sup>1</sup>, Patrice Cacoub <sup>7</sup>, Christian Funck-Brentano <sup>1</sup> and Joe-Elie Salem <sup>1</sup>

<sup>1</sup> AP-HP. Sorbonne Université, Pitié-Salpêtrière Hospital, Department of Pharmacology and Clinical Investigation Center; INSERM, CIC-1901; Sorbonne Université, Faculty of Medicine; F-75013 Paris, France.

<sup>2</sup> AP-HP. Université de Paris, INSERM, Cochin Hospital, Department of Pediatric and Perinatal Pharmacology. Paris, France.

<sup>3</sup> AP-HP. Sorbonne Université, INSERM 1136, Institut Pierre Louis d'Epidémiologie et de Santé Publique, Pitié-Salpêtrière Hospital, Service de Maladies Infectieuses et Tropicales, Paris, France.

<sup>4</sup> AP-HP. Sorbonne Université, Service de Pneumologie, Médecine intensive - Réanimation (Département "R3S"), Groupe Hospitalier Universitaire Pitié-Salpêtrière Charles Foix, 75013, Paris, France

<sup>5</sup> AP-HP. Sorbonne Université, Service de Cardiologie, Groupe Hospitalier Universitaire Pitié-Salpêtrière Charles Foix, 75013, Paris, France.

<sup>6</sup> AP-HP. Sorbonne Université, Médecine intensive – Réanimation Médicale Groupe Hospitalier Universitaire Pitié-Salpêtrière Charles Foix, 75013, Paris, France.

<sup>7</sup> AP-HP. Sorbonne Université, Pitié-Salpêtrière Hospital, Department of Internal Medicine and Clinical Immunology; Centre de Référence des Maladies Auto-Immunes et Systémiques Rares. Paris, France

\* Correspondence: Dr Noël Zahr  
Department of pharmacology & Therapeutic Drug Monitoring  
Pitié-Salpêtrière Hospital  
Sorbonne Université, APHP,  
Paris, France  
[noel.zahr@aphp.fr](mailto:noel.zahr@aphp.fr) ; Tel.: +33 1 42 16 20 22

‡ Contributed equally

45 **Abstract:** Background: Hydroxychloroquine (HCQ) dosage required to reach circulating levels that  
46 inhibit SARS-Cov-2 are extrapolated from pharmacokinetic data in non-COVID-19 patients.  
47 Methods: We performed a population-pharmacokinetic analysis from 104 consecutive COVID-19  
48 hospitalized patients (31 in intensive care units, 73 in medical wards, n=149 samples). Plasma HCQ  
49 concentration were measured using high-performance liquid chromatography with fluorometric  
50 detection. Modelling used Monolix-2019R2. Results: HCQ doses ranged from 200 to 800 mg/day  
51 administered for 1 to 11 days and median HCQ plasma concentration was 151 ng/mL. Among the  
52 tested covariates, only bodyweight influenced elimination oral clearance (CL) and apparent  
53 volume of distribution (Vd). CL/F (F for unknown bioavailability) and Vd/F (relative  
54 standard-error, %) estimates were 45.9L/h (21.2) and 6690L (16.1). The derived elimination half-life  
55 (t1/2) was 102h. These parameters in COVID-19 differed from those reported in patients with  
56 lupus, where CL/F, Vd/F and t1/2 are reported to be 68L/h, 2440L and 19.5h, respectively. Within  
57 72h of HCQ initiation, only 16/104 (15.4%) COVID-19 patients had HCQ plasma levels above the  
58 in-vitro half maximal effective concentration of HCQ against SARS-CoV-2 (240ng/mL).. HCQ did  
59 not influence inflammation status (assessed by C-reactive protein) or SARS-CoV-2 viral clearance  
60 (assessed by real-time reverse transcription-PCR nasopharyngeal swabs). Conclusion: The  
61 inter-individual variability of HCQ pharmacokinetic parameters in severe COVID-19 patients was  
62 important and differed from that previously reported in non-COVID-19 patients. Loading doses of  
63 1600mg HCQ followed by 600mg daily doses are needed to reach concentrations relevant to  
64 SARS-CoV-2 inhibition within 72 hours in  $\geq 60\%$  (95% confidence-interval: 49.5-69.0%) of COVID-19  
65 patients

66 **Keywords:** Hydroxychloroquine; Covid-19; Pharmacokinetics; Pharmacodynamics

67

68

69

70

71

72

73

74

75

76

77

78

79

80

81

82 **Abbreviations**

ALAT	Alanine aminotransferase
ASAT	Aspartate aminotransferase
$\beta$	Covariate effect parameter
BMI	Body Mass Index
BW	Bodyweight
CL/F	Apparent elimination Clearance
CNIL	National Commission on Informatics and Liberties
COVID-19	Novel coronavirus disease 2019
CRP	C-Reactive Protein
CYP	Cytochrome P450
EC50	Half maximal effective concentration
F	Bioavailability
$\eta$	Between-subject variability
HCQ	Hydroxychloroquine
Ht	Hematocrit
Ka	Absorption rate constant
MDRD	Modification of Diet in Renal Disease equation
QTc	Corrected QT interval
RE	Rheumatoid Arthritis
RT-PCR	Reverse Transcription Polymerase Chain Reaction
SARS-CoV-2	Severe acute respiratory syndrome coronavirus
SLE	Systemic Lupus Erythematosus
T.i.d	Ter in die
U-HPLC	Ultra-High Performance Liquid Chromatography
V/F	Apparent Volume of Distribution
$\sigma$	Proportional residual variability

83

84

85

86

87

88

89

90

91

92

## 93 1. Introduction

94 A new human respiratory-tropic coronavirus, SARS-CoV-2, has spread rapidly worldwide.  
95 COVID-19, the disease caused by this virus, has a very variable clinical presentation, ranging from  
96 pauci-symptomatic to acute respiratory distress syndrome. Several drugs are being evaluated for the  
97 treatment of covid-19 including hydroxychloroquine (C<sub>18</sub>H<sub>26</sub>ClN<sub>3</sub>O) (HCQ). Some observational,  
98 non-randomized studies have suggested the possible efficacy of HCQ associated or not with  
99 azithromycin in COVID 19 patients contrasting with other studies [1-5]. Recent randomized  
100 controlled trials showed that HCQ was not effective in hospitalized or non-hospitalized patients  
101 with Covid-19 [6-9]. The results of over 120 randomized controlled trials for the treatment and  
102 prevention of COVID-19 are pending. Doses of HCQ tested were highly variable, ranging from  
103 400mg/day for few weeks up to 2.4g on day 1 as a loading dose followed by 400 mg/day for few  
104 days, based on extrapolation from pharmacokinetics properties of HCQ derived from its approved  
105 indications (malaria, auto-immune diseases) [10]. Yao et al. reported that HCQ possesses anti-viral  
106 activity, against SARS-CoV2 in vitro [11] with an EC<sub>50</sub> (half maximal effective concentration) of  
107 0.72μM (240ng/mL) of HCQ on Vero-cells. The antiviral effect of HCQ, has been suggested to result  
108 from increasing intracellular pH leading to decreased phago-lysosome fusion, and impaired viral  
109 receptor glycosylation. Moreover, HCQ has immune-modulating effect by inhibiting toll-like  
110 receptor signaling, decreasing production of cytokines, especially IL-1 and IL-6, potentially  
111 mitigating the cytokine release syndrome induced by SARS-CoV-2 infection [12-14].

112 Steady-state pharmacokinetics of HCQ has previously been reported in healthy volunteers,  
113 adult patients with malaria [15], systemic lupus erythematosus (SLE) [16, 17] and rheumatoid  
114 arthritis (RA) [18-20] and are summarized in Table-1. Herein, we analyzed plasma and blood  
115 concentration data in a cohort of consecutive patients hospitalized with COVID-19 who received  
116 HCQ. The aim of this work was to characterize HCQ pharmacokinetics in the setting of COVID-19  
117 and to identify its main influencing covariates. The pharmacokinetic model developed from  
118 COVID-19 patients then allowed us to determine the best HCQ dosing regimen to rapidly reach  
119 relevant theoretical antiviral concentrations, i.e. higher than HCQ EC<sub>50</sub> on SARS-CoV-2. We finally  
120 analyzed if there was any HCQ dose-efficacy relationship on SARS-CoV-2 clearance and  
121 inflammation parameters.

## 122 2. Materials and Methods

123 We conducted a monocenter study in consecutive patients with confirmed COVID-19 (positive  
124 for SARS-CoV-2 with reverse transcription polymerase chain reaction (RT-PCR), sampled for HCQ  
125 therapeutic drug monitoring left at the discretion of the treating physicians. Patients were treated  
126 with oral hydroxychloroquine sulfate (Plaquenil, Sanofi-Winthrop, Paris, France). Concentrations of  
127 HCQ and its metabolites in whole blood and plasma were assayed by Ultra-High Performance  
128 Liquid Chromatography (U-HPLC) with fluorometric detection [21]. This retrospective study was  
129 based on data extracted from medical records, in strict compliance with the French reference  
130 methodology MR-004, established by French National Commission on Informatics and Liberties  
131 (CNIL) and was approved by Sorbonne University ethics Committee (CER-2020-14-JOCOVID).

### 132 2.1. Pharmacokinetic-dynamic modelling

133 Hydroxychloroquine time-courses were analyzed using the nonlinear mixed effect modelling  
134 software program Monolix 2019R2 ([www.lixoft.eu](http://www.lixoft.eu)). To ensure full convergence of the program, the  
135 iteration number was fixed to 1000 with 50 Markov Chain Monte Carlo. The effect of the  
136 demographic and clinical characteristics which were thought to influence pharmacokinetics were  
137 evaluated for the following covariates: bodyweight (BW), height, age, sex, hepatic function using  
138 ALAT (alanine aminotransferase), creatinine clearance using MDRD (modification of diet in renal  
139 disease equation), CRP (c-reactive protein) level, serum albumin, co-prescription with  
140 azithromycin or other macrolides, intensive care unit vs. medical wards patients, platelets/white

141 cells counts and hematocrit. Parameter estimates were standardized for a mean standard covariate  
 142 using an allometric model:

$$143 \quad P_i = P_{STD} \times (COV_i/COV_{STD})^{PWR}$$

144 where  $P_{STD}$  is the standard value of parameter and  $P_i$  and  $COV_i$  are the parameter and covariate  
 145 values of the  $i^{th}$  individual. The superscript  $PWR$  denotes an exponent power.

146 For bodyweight, allometric scaling theory dictates that  $PWR$  are typically 1 and 0.75 for  
 147 volumes and clearance terms, respectively [22]. The goodness-of-fit of each model was evaluated by  
 148 the observed-predicted (population and individual) concentration scatter plots, by the visual  
 149 inspection of the individual concentration-time courses, and the prediction-corrected visual  
 150 predictive checks.

151 A one-compartment open model best described HCQ pharmacokinetics, whatever the sampling  
 152 reference, blood or plasma. The parameters of the model were the elimination oral clearance ( $CL/F$ ),  
 153 the apparent volume of distribution ( $V/F$ ) and the absorption rate constant,  $K_a$  (with  $F$ , as the  
 154 unknown bioavailability). Given the lack of data on the absorption phase,  $K_a$  was fixed to 0.75 and  
 155  $1.15 \text{ h}^{-1}$  in blood and plasma respectively as previously reported [22]. Between-subject variabilities  
 156 were estimated for  $CL/F$  and  $V/F$  parameters and the residual variability was described by a  
 157 proportional model.  $F$  stands for unknown bioavailability.

## 158 2.2. HCQ and Viral clearance

159 Different covariates, including HCQ concentration, thought to influence the time-to-PCR  
 160 negatvation were tested using the R-program [23] and the survival package [24]. The Kaplan-Meier  
 161 method and log-Rank test were used for this purpose. Patients were split according to their  
 162 individual model-predicted HCQ plasma concentration at 48h using the 1<sup>st</sup>, 50<sup>th</sup> or 75<sup>th</sup> quartile.  
 163 Thereafter, two Kaplan-Meier curves were generated for each splitting factor. The time to  
 164 negatvation was the first occurrence when two successive RT-PCR were negative.

## 165 2.3. HCQ effect on CRP

166 The CRP time-courses were modelled as a function of time and plasma HCQ Concentration  
 167 ( $C_p$ ) as:

$$168 \quad CRP = CRP_0 \cdot \{ 1 - f_{HCQ} \cdot C_p / (C_{p50} + C_p) - (1 - f_{HCQ}) \cdot t / (t + t_{50}) \}$$

169 where  $CRP_0$ ,  $f_{HCQ}$ ,  $C_{p50}$  and  $t_{50}$  denote the initial CRP concentration, fractional effect of HCQ, HCQ  
 170 concentration or time that produce a 50% decrease in the  $CRP_0$  level. The model stands for the effect  
 171 of HCQ ( $f_{HCQ}$  and  $C_{p50}$ ) plus an independent time-related effect ( $[1 - f_{HCQ}]$  and  $t_{50}$ ) which  
 172 simultaneously decrease the initial  $CRP_0$  level.

## 173 3. Results

### 174 3.1. Demographic and biological characteristics

175 A total of 149 plasma samples were obtained from 104 COVID-19 patients, (n=31 in intensive  
 176 care units and n=73 in medical wards). Time point of drug sampling was performed at various times  
 177 after HCQ dosing, i.e., mean 16.2 h (SD 30 h). Characteristics of included COVID-19 patients are  
 178 detailed in Table-2. At the time of HCQ blood sampling, 10/104 patients (9.6%) had severe renal  
 179 failure with a glomerular filtration rate <30 mL/min/1.73m<sup>2</sup> and 34/104 (32.7%) had ALAT levels 3  
 180 times higher than the upper normal limit. In all patients, SARS-CoV-2 was confirmed by a positive  
 181 (RT-PCR) assay on a nasopharyngeal sample. All patients were treated with HCQ and 75/104 (72%)  
 182 had a post-treatment follow-up with RT-PCR on nasopharyngeal samples. HCQ was combined with  
 183 a macrolide antibiotic in 29 patients (n=6 with azithromycin). The mean time between the  
 184 introduction of HCQ and the onset of symptoms was  $8.6 \pm 5$  days. The usual HCQ dosage was

185 200mg t.i.d (78/104 patients) for 1 to 11 days (3 patients received an 800mg loading dose). Figure-1  
 186 shows plasma and blood HCQ concentrations available in our cohort.

187 **Table 1.** Median plasma and blood pharmacokinetics parameters of HCQ in several pathologies.

<b>Plasma</b>	<b>COVID-19***</b>	<b>Lupus*</b>	<b>Malaria<sup>□</sup></b>	<b>Healthy+</b>
V/F, L	6696	2440	2363	2851
CL/F, L/h	45.5	68.2	15.5	12.0
t <sub>1/2</sub> , h	102	19.5	106	172.3

<b>Blood</b>	<b>COVID-19**</b>	<b>LUPUS*</b>	<b>RA<sup>¥</sup></b>	<b>RA<sup>§</sup></b>
V/F, L	1990	903	605	2283
CL/F, L/h	14.7	18.6	9.9	15
t <sub>1/2</sub> , h	93.8	25.9	43.3	124.3

188 \*HCQ sulfate 400 mg/day [16], <sup>§</sup>HCQ sulfate 400, 800, or 1,200 mg/day [19], <sup>¥</sup>HCQ sulfate 200 or  
 189 400mg/day [20], <sup>□</sup>HCQ sulfate dose 800mg then 400 mg at 6, 24, and 48 h afterward [15], \*\* 96 patients  
 190 (135 samples), \*\*\*104 patients (149 samples) in our study were assessed.

191

192

193

194

195

196

197

198

199

200

201

202

203

204

205

206

207

208

**Table 2.** Demographic and biological characteristics of 104 patients.

	<b>Mean ± standard deviation</b>	<b>Minimum</b>	<b>Maximum</b>
Age, years	63.0 ± 14.4	25	99
Weight, kg	79 ± 16	40	150
Height, cm	169 ± 11	146	192
BMI, kg/m <sup>2</sup>	27.3 ± 5.0	17.8	51.9
Sex, (Female) %	32	NA	NA
Patient in intensive care, %	23	NA	NA
MDRD, mL/min/1.73m <sup>2</sup> .	86.0 ± 33.6	5	194
Creatinine, μmol/L	98 ± 82	34	808
Albumin, g/L.	29.0 ± 6.9	12	63
HT, %.	35.0 ± 6.5	18	49
Platelet, 10 <sup>9</sup> L	313 ± 134	52	753
White blood cells, 10 <sup>9</sup> L	7.5 ± 4.7	2	32.4
C-reactive protein (CRP), mg/L	86 ± 98	2	469
ALAT, U/L	69 ± 74	11	486
ASAT, U/L	63 ± 49	13	252
<hr/>			
Dose HCQ, mg/day	563 ± 99	200	800
Observation duration, Days	5.3 ± 2.3	1	12
<hr/>			
Blood concentration			
HCQ, ng/mL	586 ± 457	50	2792
<hr/>			
Plasma concentration			
HCQ, ng/mL	193 ± 152	12	795
<hr/>			
HCQBlood/HCQPlasma	4.0 ± 2.3	1	15

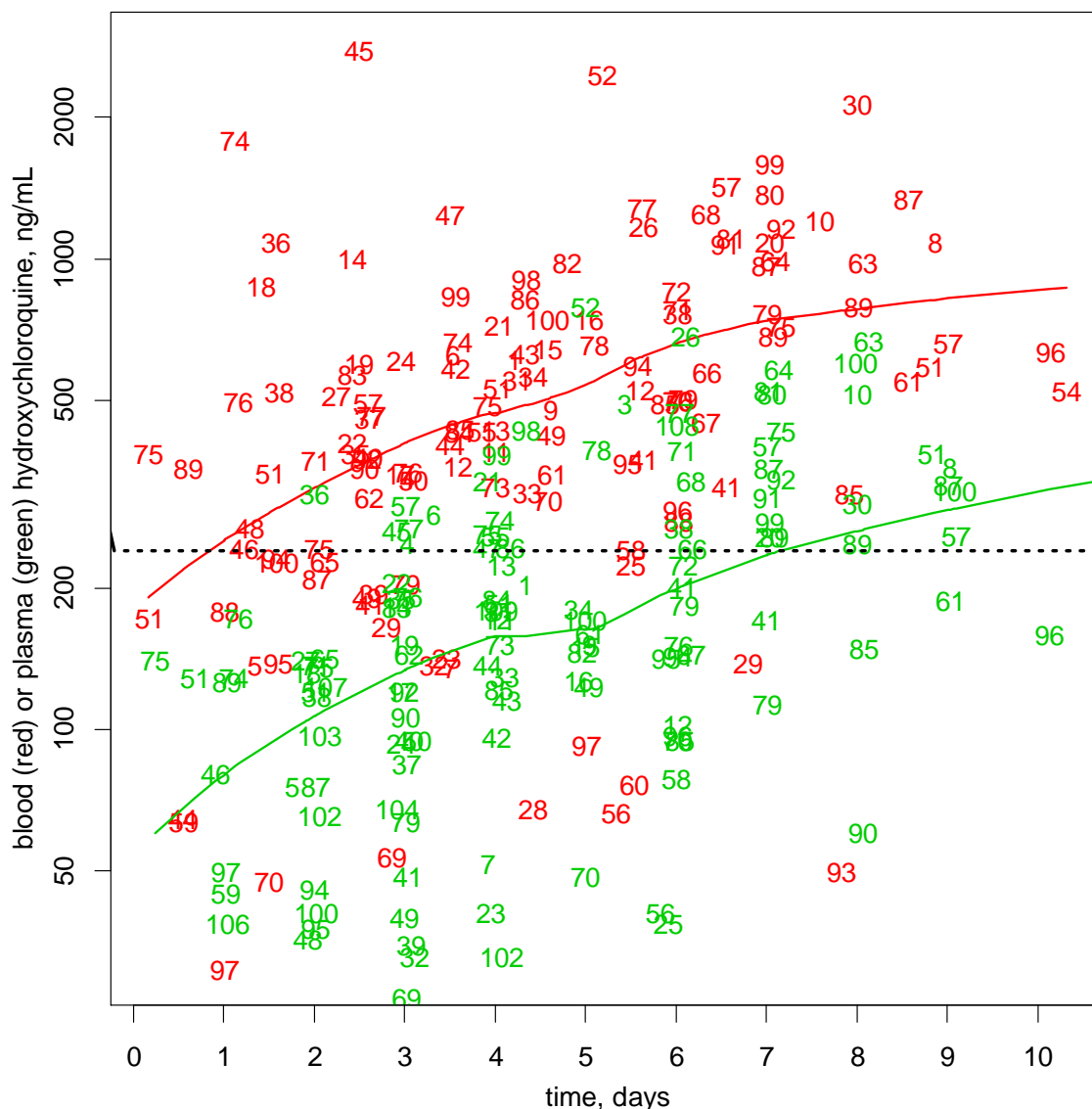
210

211

212

BMI: Body Mass Index, NA: non-applicable, MDRD: (modification of diet in renal disease equation), HT: hematocrit, ALAT: alanine aminotransferase, ASAT: aspartate aminotransferase, HCQ: hydroxychloroquine. All data were collected at the time of HCQ sampling.





213

214 **Figure 1.** Observed blood (red) and plasma (green) hydroxychloroquine concentrations. Numbers  
 215 stand for the patient identity and lines for the corresponding spline describing the overall trend for  
 216 each matrix.

### 217 3.2. Pharmacokinetic modelling

218 The population plasma and blood HCQ pharmacokinetic parameter estimates and their  
 219 influencing covariates are summarized in Table-3, and supplementary Table-1, respectively. These  
 220 parameters estimates were different from those reported in other diseases (lupus, malaria,  
 221 rheumatoid arthritis) or in healthy volunteers (Table-1). Figure-2A shows the visual predictive  
 222 checks for the HCQ plasma final model in COVID-19 (for blood final model, see Figure-2B). The  
 223 observed concentrations percentiles are well included in the corresponding model-predicted 90%  
 224 confidence interval bands. Among the tested covariates (age, bodyweight, gender, hepatic and renal  
 225 function, CRP, intensive care vs. medical wards care, macrolide/azithromycin co-prescription,  
 226 platelet count), bodyweight (based on allometry principles) was the sole variable having an effect on  
 227 plasma or blood HCQ CL/F and V/F prediction that improved the model. Platelet count had an  
 228 additional significant effect on V/F estimation for blood HCQ (supplementary Table-1).

229

230  
231**Table 3.** Median plasma hydroxychloroquine population pharmacokinetic parameters in 104 COVID-19 adult patients.

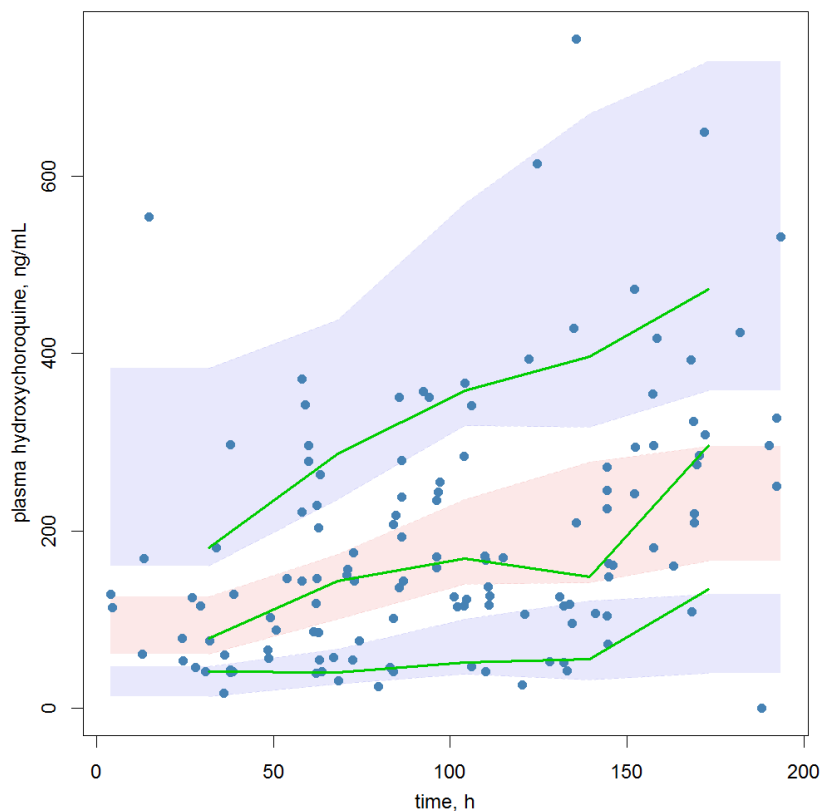
Parameter	Estimate	%res
ka, h-1	1.15	fixed
V/F, L	6690	16.1
$\beta$ , V/F*(BW/70) <sup><math>\beta</math></sup>	1	fixed
CL/F	45.9	21.2
$\beta$ , CL/F*(BW/70) <sup><math>\beta</math></sup>	0.75	fixed
$\eta$ V/F	0.61	18.9
$\eta$ CL/F	0.69	25.1
$\sigma$ , ng/mL	64.1	9.76

232  
233  
234  
235

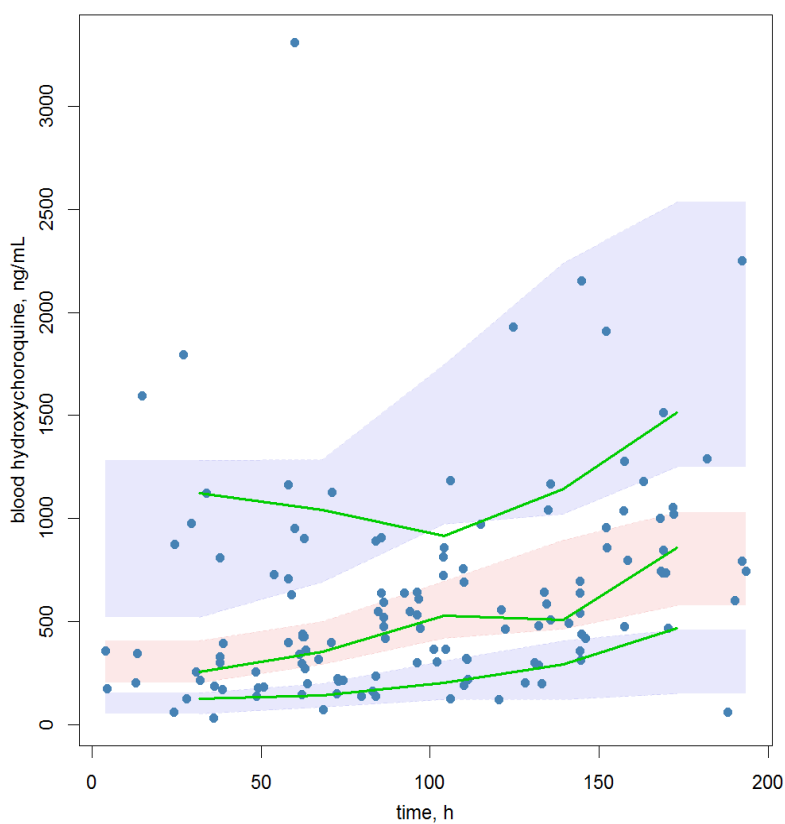
CL/F, apparent elimination clearance; V/F, apparent volume of distribution; Ka, absorption rate constant; F, unknown bioavailability;  $\beta$ , covariate effect parameter;  $\eta$ , between-subject variability;  $\sigma$ , proportional residual variability; BW, bodyweight (CL/F and V/F estimates are normalized to a 70 kg BW, i.e., for the  $i^{\text{th}}$  patient  $CL/F_i = CL/F*(BW_i/70)^{0.75}$ ).

236

237  
238  
239  
240  
241



242  
243  
244



245  
246  
247  
248  
249

**Figure 2.** Prediction-corrected visual predictive check for plasma (A) and blood (B) hydroxychloroquine population pharmacokinetics. Plain (●) and green lines stand for prediction-corrected observed concentrations and their 5<sup>th</sup>, 50<sup>th</sup> and 95<sup>th</sup> percentiles. Light blue and red bands stand for the corresponding model predicted 90% confidence intervals.

250

251

252

253

254

255

256

257

258

259

260

261

262

263

264

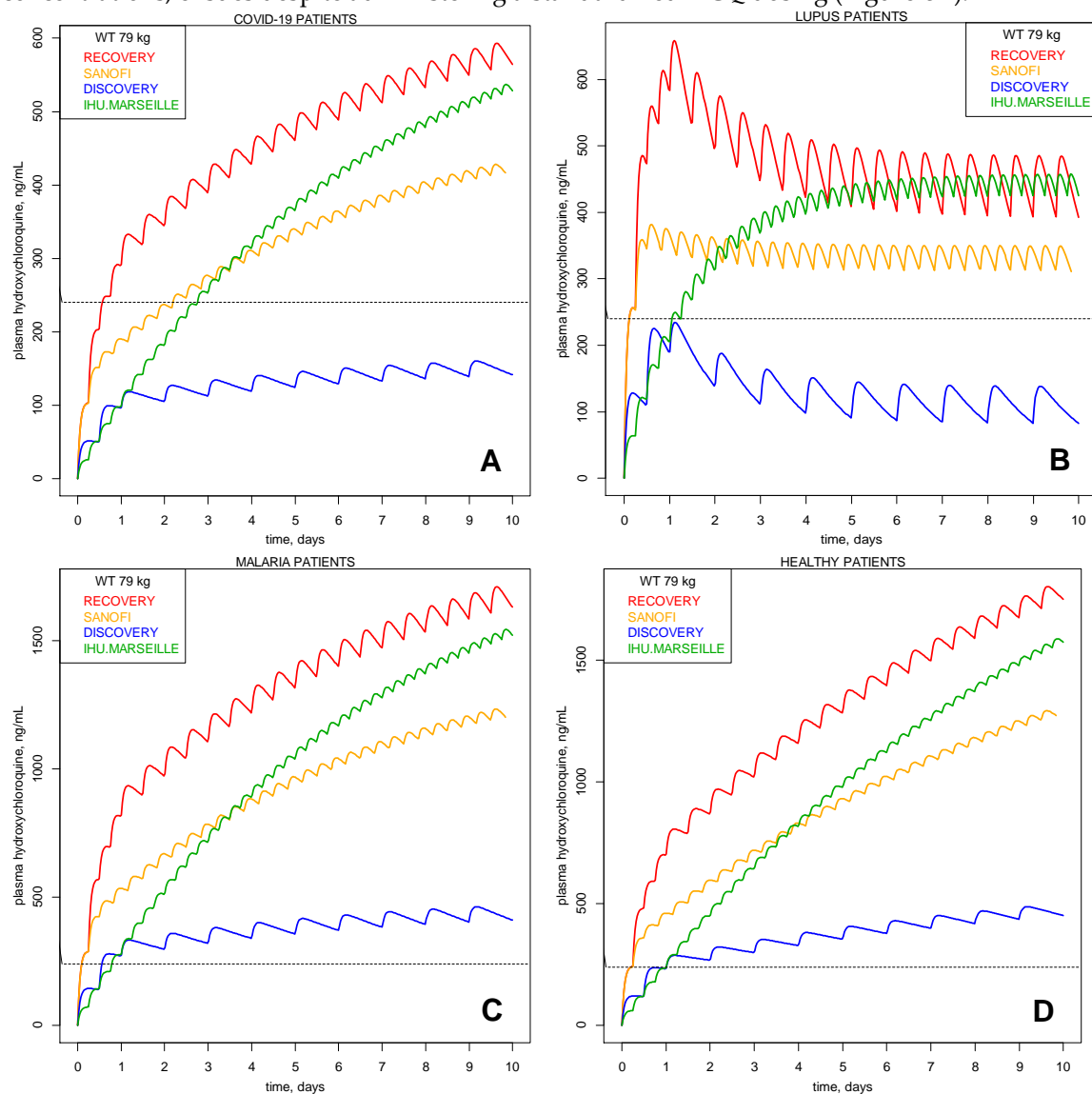
265

266

267

Relying on our final pharmacokinetics parameters modelling, we generated representative plasma HCQ concentrations-time courses using various dosing regimens of major COVID-19 prospective trials testing HCQ (Figure-3A). Concentration vs. time profiles were also drawn according to documented plasma HCQ pharmacokinetics parameters estimates (Table-1) derived from healthy volunteers, lupus and malaria patients (Figure-3B, 3C, 3D, respectively). Depending on the diseases-specific estimates used, results were dramatically different. Figure-4 shows 4 dosing regimens based on our COVID-19 plasma HCQ pharmacokinetics estimates leading to HCQ plasma concentration above the HCQ EC50 against SARS-CoV-2 value 48 to 72h after treatment initiation. Day 1 loading doses of HCQ  $\geq 1600$ mg followed by daily dose  $\geq 600$ mg reached theoretical concentrations in  $\geq 40\%$  (95% confidence interval 30-50%) and  $\geq 60\%$  (95% confidence-interval: 49.5-69.0%) of COVID-19 patients within 48 and 72hours, respectively, assuming a distribution of body weights generally similar to that of our population. For a selected dosing scheme, effect of 1st and 3rd body weight quartiles on CL and Vd population parameters are shown in Figure-5A and HCQ plasma concentration-times courses for patients weighing 79kg (median bodyweight) using their individualized pharmacokinetic parameters are depicted in Figure-5B. An important between patient's variability, leading to low or unexpectedly high (potentially toxic) HCQ plasma concentrations, ensues despite administering a standardized HCQ dosing (Figure-5B).

268



269

270

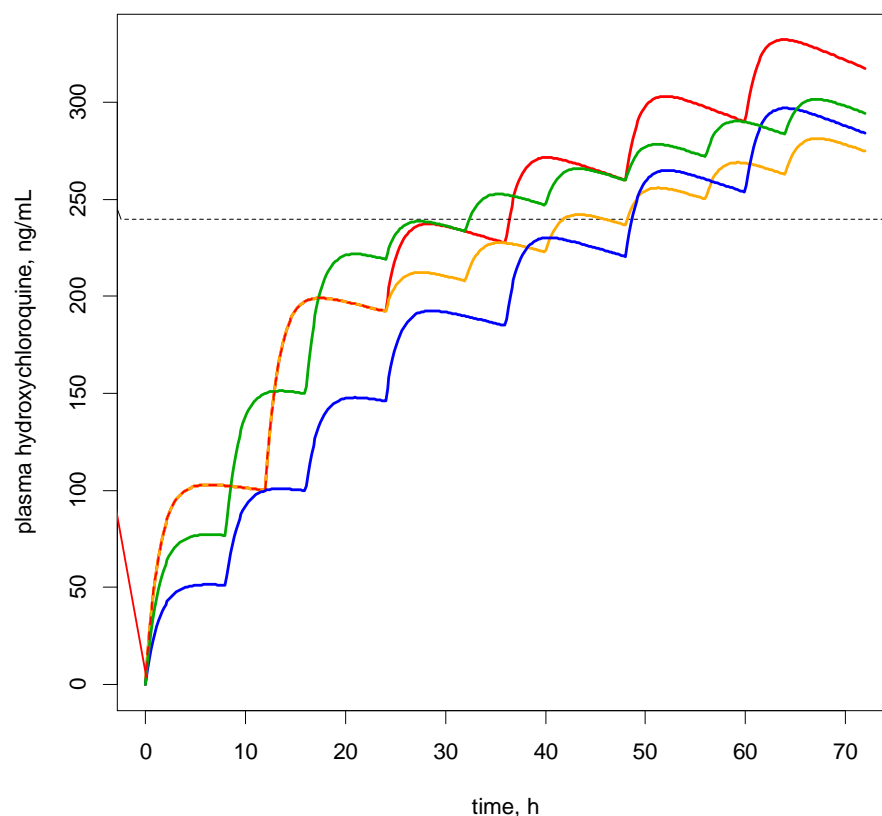
271

272

**Figure 3.** Representative predicted plasma HCQ concentrations-time courses as a function of the dosing regimen evaluated in major prospective trials testing HCQ for COVID-19. Curves are drawn according to our final parameters for a typical patient weight (WT) of 79 kg (observed median).

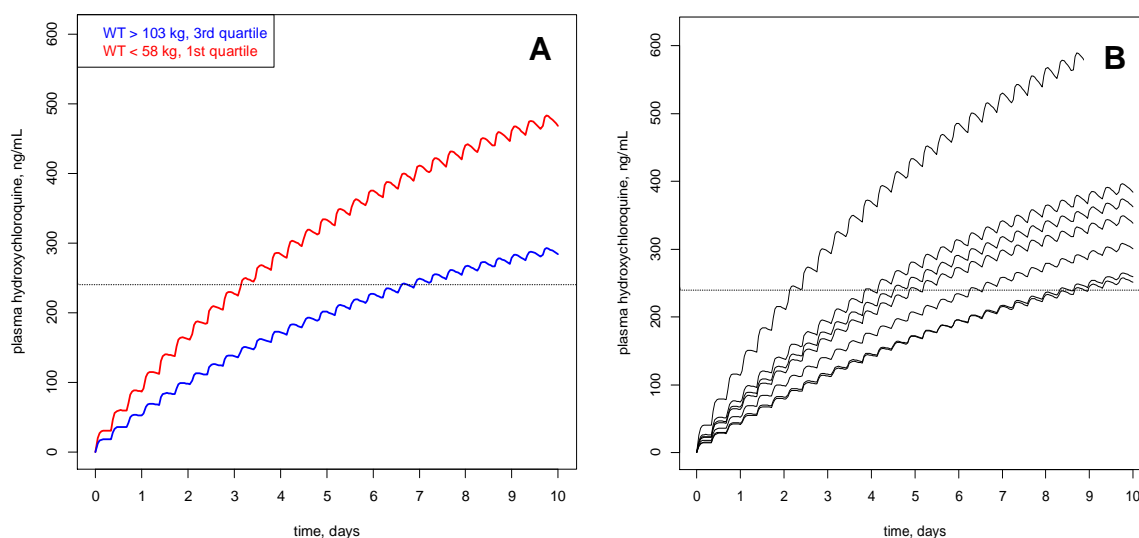
273

274 Dosing schedules are 2.4 g loading dose then 400 mg/12h (RECOVERY), 1.2 g loading dose then 200  
 275 mg/8h (SANOFI), 200mg/8h (IHU.Marseille) and 800 mg loading dose then 400 mg/24h  
 276 (DISCOVERY). Curves shown are using Covid-19 patients (A), lupus patients (B), malaria patients  
 277 (C), and healthy subjects (D) parameters.  
 278



279

280 **Figure 4.** Possible dosing regimen in COVID-19 patients (weighing 79 kg) according to our final model.  
 281 Dosing schedules represented are 800mg/12h (total 1600 mg) the 1<sup>st</sup> day, then 400mg/12h (RED);  
 282 800mg/12h (total 1600 mg) the 1<sup>st</sup> day, then 200mg/8h (ORANGE); 400mg/8h (total 1200mg) loading dose  
 283 the 1<sup>st</sup> day, then 400mg/12h (BLUE); 600mg/8h (total 1800mg) loading dose the 1<sup>st</sup> day, then 200mg/8h  
 284 (GREEN).



285

286

287

288

289

290

**Figure 5.** Mean plasma hydroxychloroquine concentration-time courses for a patient with bodyweight (WT) <58Kg or >103Kg and half-life >70h, red and blue curves, respectively (A) and for typical patients with 79kg WT and clearance (CL) ranging between 30-68 L/h and volume of distribution (Vd) between 4765-13470 L, black curves drawn from variable CL and Vd Bayesian estimates (B). Dosing regimen is 200 mg HCQ/8h, with no loading dose.

291

### 292 3.3. Pharmacodynamic effects of HCQ in COVID-19

293

294

295

296

297

298

299

300

301

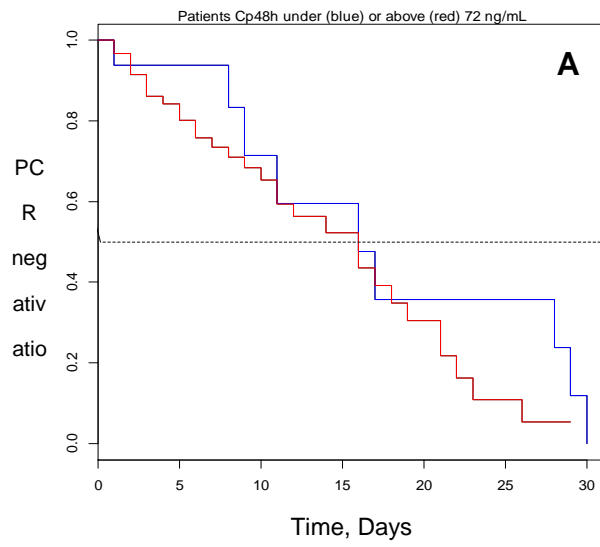
302

303

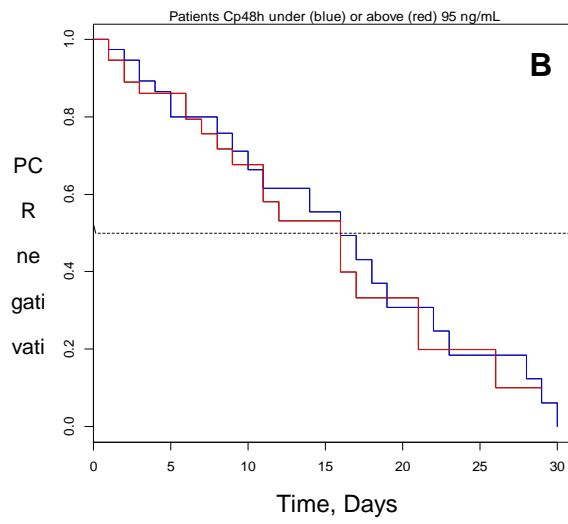
304

305

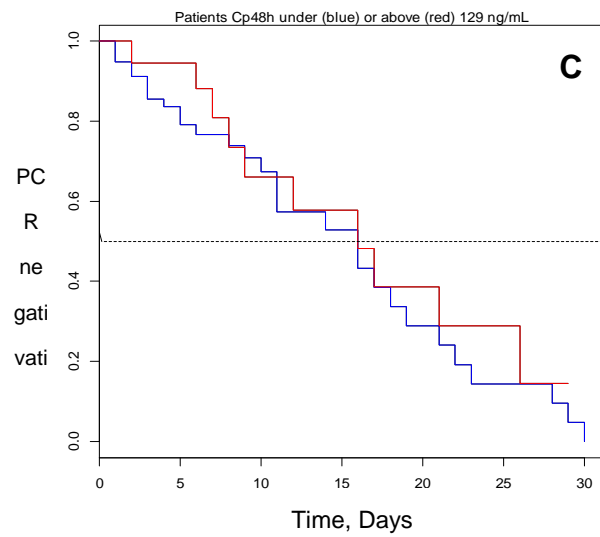
A total of 75 patients were available for a SARS-CoV-2 viral status analysis using nasopharyngeal swab. PCR follow-up was negative in 40 (53%). To assess the effect of plasma HCQ concentration on time-to-PCR negativation, patients were grouped as follows: individual predicted plasma HCQ concentration at 48h below versus above 25th (72 ng/mL), 50th (95.5 ng/mL), 75th quantile (129 ng/mL). There were no significant differences in time-to-PCR negativation for all tested comparisons (Figure-6). In our cohort, only 4 and 16 patients among 104 had observed or imputed (in patients with data available after 72 hours) HCQ plasma levels >240ng/mL, the in-vitro half maximal effective concentration of HCQ against SARS-CoV-2, at 48 and 72 hours, respectively. There was also no significant effect of HCQ plasma concentration on the CRP time-course. All attempts gave non-significant values for fHCQ, or Cp50 parameters that stand for the effect of HCQ on CRP time-course, meaning that the effect of HCQ on the inflammation status could not be demonstrated.



306



307



308

309 **Figure 6.** Time-to-Sars-Cov-2 PCR negativation curves as a function of HCQ plasma levels within 48  
 310 hours of HCQ start. Blue and red curves represent patients with an HCQ plasma concentration at 48  
 311 h below or above the 1<sup>st</sup> HCQ plasma concentration quartile observed in our cohort, respectively (72  
 312 ng/mL, A), median (95 ng/mL, B) and 3<sup>rd</sup> quartile (129 ng/mL, C).

#### 313 4. Discussion

314 In this study, we developed a plasma and blood population pharmacokinetics models of HCQ  
 315 based on data obtained in hospitalized COVID-19 patients in intensive care units and in medical  
 316 wards. The blood and plasma pharmacokinetics were described by a one-compartment model with  
 317 first-order absorption. Body weight had a significant effect on CL and Vd in both matrices. HCQ  
 318 pharmacokinetic parameters in COVID-19 patients are different from those of other pathologies  
 319 (lupus, malaria, rheumatoid arthritis) and healthy volunteers [15, 16, 20]. The theoretical ideal lowest  
 320 dose to achieve a target plasma concentration >EC50 (240ng/ml) within 48/72 hours in most patients  
 321 was 1600mg as a loading dose, followed by 200mg/8h thereafter. Nevertheless, plasma  
 322 concentrations of HCQ showed a high interindividual variability (see Figure-1) mainly influenced  
 323 by body weight. In COVID 19, either HCQ dosage adjusted on body weight or HCQ plasma  
 324 therapeutic drug monitoring may be useful options if HCQ is clinically effective on COVID-19.  
 325 However, in our cohort study, there was no significant influence of HCQ plasma concentrations on  
 326 inflammation (CRP) or on viral clearance (RT-PCR).

327 Interestingly, recent studies used HCQ pharmacokinetics parameters derived from  
 328 autoimmune diseases, to propose dosing regimen of HCQ to be used in COVID-19 patients [25-27].  
 329 Thus, our data suggest that relevance of these type of modelling might be toned down given the  
 330 importance of difference observed between HCQ pharmacokinetic parameters in COVID-19 versus  
 331 other settings (Table-1). Supporting our findings, preliminary pharmacokinetics data from a small  
 332 cohort of 7 hospitalized COVID-19 patients treated with HCQ as part of the RECOVERY trial (2.4g as  
 333 loading dose then 400 mg/12h) have recently been pre-published [28]. The results indicate that HCQ  
 334 concentrations are lower than those expected based on previous modelling, even though a high dose  
 335 regimen was used.

336 Of note, our PK blood parameters estimates were concordant with those estimated by Thémans  
 337 *et al* [29] and other groups [27, 29, 30] providing evidence that a high HCQ loading dose is needed to  
 338 reach circulating levels in COVID-19 patients theoretically relevant as compared to in-vitro  
 339 SARS-CoV-2 inhibitory concentrations.

340 In our cohort including over 100 COVID-19 patients, subjects had different profiles ranging  
 341 from hospitalization in medicine to intensive care unit, with variable renal and hepatic functions, as  
 342 well as co-prescription with macrolides, most of which are cytochrome P-450 inhibitors [31]. None  
 343 influenced HCQ plasma and blood pharmacokinetics in COVID-19 except weight, or weight and  
 344 platelet count, respectively. This finding is concordant with other HCQ pharmacokinetic studies in  
 345 lupus and malaria settings, in which body mass index and platelet count were also significant  
 346 contributing covariates in the model [16, 32].

347 Of note, the relationship between circulating concentrations of HCQ and clinical efficacy has  
 348 been demonstrated in rheumatoid arthritis and systemic lupus erythematosus [17-19, 33]. However,  
 349 our study did not show any association between plasma HCQ concentration and time to  
 350 negativation of SARS-CoV-2 viral load in hospitalized patients, or resolution of inflammation  
 351 (assessed by CRP). We are currently studying the association between the blood and plasma  
 352 concentration of HCQ and QTc (i.e the duration of ventricular repolarization corrected for heart rate,  
 353 a predictor of ventricular arrhythmias) [26] in patients with COVID-19 to further assess  
 354 cardiovascular safety of HCQ in COVID-19 setting [34]. Indeed, the risks of cardiotoxicity associated  
 355 with HCQ during the COVID-19 pandemic might increase for several reasons. Patients with  
 356 COVID-19 have multiple risk factors for drug-induced QT prolongation and proarrhythmia:  
 357 hypokalemia; fever amplifying drug-induced IKr blockade; and an increase in interleukin-6, as seen  
 358 in COVID-19 infection which has been suggested as a mechanism of the QT prolongation associated  
 359 with inflammation [35]. The French Pharmacovigilance Network has reported 103 notifications of



360 cardiac adverse drug reactions associated with "off-label" use of hydroxychloroquine since March  
361 2020 up to April 2020 [36]. These observations, on top of its lack of efficacy, justified limiting the  
362 prescription of HCQ in COVID-19 patients [37].

363 The retrospective, observational design of our work is the main limitation. The blood and  
364 nasopharyngeal samples were not systematically assessed for all patients during the treatment  
365 period. This may have biased our results by precluding to demonstrate that there was an association  
366 between plasma HCQ levels and negative viral loads. Unfortunately, the detailed time course of  
367 viral load was unknown available, precluding further analysis. However, multiple lines of evidence  
368 are emerging against HCQ efficacy in hospitalized COVID-19, even with theoretically effective high  
369 dosing regimen such as in the RECOVERY randomized controlled trial [38-40]. In that study,  
370 patients received a loading dose of 2.4g then 400mg every 12 hours. HCQ was not associated with  
371 reduced mortality but was associated with an increased length of hospital stay and a trend towards  
372 increased risk of progression to invasive mechanical ventilation or death. [35, 41] Indeed, the dosing  
373 regimen used in the RECOVERY trial was even higher than the adapted dosing regimen that we can  
374 recommend based on in vitro HCQ EC50 on SARS-CoV-2 and HCQ human pharmacokinetic  
375 parameters in COVID-19, identified in this work.

## 376 5. Conclusions

377 Interindividual variability of HCQ pharmacokinetics parameters in hospitalized COVID-19  
378 patients was important and parameters differed from those identified in non-COVID-19 patients. No  
379 effect of HCQ was found on SARS-CoV-2 (nasopharyngeal) viral clearance nor on inflammation  
380 resolution. Loading doses of 1600mg HCQ followed by 600mg daily doses reached within 72 hours,  
381 concentrations relevant to SARS-CoV-2 inhibition in  $\geq 60\%$  (95% confidence-interval: 49.5-69.0%) of  
382 COVID-19 patients.

383  
384

385 **Funding:** This research received no external funding

386 **Acknowledgments:** NA

387 **Conflicts of Interest:** The authors declare no conflict of interest.

388  
389  
390  
391  
392  
393  
394  
395  
396  
397  
398  
399  
400  
401  
402  
403  
404  
405  
406  
407  
408  
409

410 **Table S1.** Median blood Hydroxychloroquine population pharmacokinetic parameters in 98 COVID-19 adult  
 411 patients  
 412

Parameter	Estimate	%res
ka, h-1	0.75	fixed
V/F, L	1,990	15.9
$\beta$ , V/F*(BW/70) <sup>β</sup>	1	fixed
$\beta$ , V/F*(PLAT/300,000) <sup>β</sup>	-0.726	37
CL/F	14.7	13.5
$\beta$ , CL/F*(BW/70) <sup>β</sup>	0.75	fixed
$\eta$ V/F		
$\eta$ CL/F		
$\sigma$ , proportional	0.272	12.2

413  
 414 CL/F, apparent elimination clearance; V/F, apparent volume of distribution; Ka, absorption rate constant; F,  
 415 unknown bioavailability;  $\beta$ , covariate effect parameter;  $\eta$ , between-subject variability;  $\sigma$ , proportional residual  
 416 variability; BW, bodyweight (CL/F and V/F estimates are normalized to a 70 kg BW plus V/F to a 300,000  
 417 platelets count, i.e., for the *i*<sup>th</sup> patient  $CL/F_i = CL/F^*(BW_i/70)^{0.75}$  and  $V/F_i = V/F^*(BW_i/70)*(PLAT_i/300,000)^{-0.726}$   
 418  
 419  
 420  
 421

422 **References**

- 423 1. Arshad S, Kilgore P, Chaudhry ZS, Jacobsen G, Wang DD, Huitsing K et al. Treatment with  
424 hydroxychloroquine, azithromycin, and combination in patients hospitalized with COVID-19. *Int J Infect Dis.*  
425 2020;97:396-403. doi:10.1016/j.ijid.2020.06.099.
- 426 2. Gautret P, Lagier JC, Parola P, Hoang VT, Meddeb L, Mailhe M et al. Hydroxychloroquine and azithromycin  
427 as a treatment of COVID-19: results of an open-label non-randomized clinical trial. *Int J Antimicrob Agents.*  
428 2020;56(1):105949. doi:10.1016/j.ijantimicag.2020.105949.
- 429 3. Gautret P, Lagier JC, Parola P, Hoang VT, Meddeb L, Sevestre J et al. Clinical and microbiological effect of a  
430 combination of hydroxychloroquine and azithromycin in 80 COVID-19 patients with at least a six-day follow  
431 up: A pilot observational study. *Travel Med Infect Dis.* 2020;34:101663. doi:10.1016/j.tmaid.2020.101663.
- 432 4. Mikami T, Miyashita H, Yamada T, Harrington M, Steinberg D, Dunn A et al. Risk Factors for Mortality in  
433 Patients with COVID-19 in New York City. *J Gen Intern Med.* 2020. doi:10.1007/s11606-020-05983-z.
- 434 5. Million M, Lagier JC, Gautret P, Colson P, Fournier PE, Amrane S et al. Early treatment of COVID-19 patients  
435 with hydroxychloroquine and azithromycin: A retrospective analysis of 1061 cases in Marseille, France. *Travel*  
436 *Med Infect Dis.* 2020;35:101738. doi:10.1016/j.tmaid.2020.101738.
- 437 6. Geleris J, Sun Y, Platt J, Zucker J, Baldwin M, Hripcsak G et al. Observational Study of Hydroxychloroquine  
438 in Hospitalized Patients with Covid-19. *N Engl J Med.* 2020;382(25):2411-8. doi:10.1056/NEJMoa2012410.
- 439 7. Rosenberg ES, Dufort EM, Udo T, Wilberschied LA, Kumar J, Tesoriero J et al. Association of Treatment With  
440 Hydroxychloroquine or Azithromycin With In-Hospital Mortality in Patients With COVID-19 in New York  
441 State. *JAMA.* 2020. doi:10.1001/jama.2020.8630.
- 442 8. Boulware DR, Pullen MF, Bangdiwala AS, Pastick KA, Lofgren SM, Okafor EC et al. A Randomized Trial of  
443 Hydroxychloroquine as Postexposure Prophylaxis for Covid-19. *N Engl J Med.* 2020;383(6):517-25.  
444 doi:10.1056/NEJMoa2016638.
- 445 9. Tang W, Cao Z, Han M, Wang Z, Chen J, Sun W et al. Hydroxychloroquine in patients with mainly mild to  
446 moderate coronavirus disease 2019: open label, randomised controlled trial. *BMJ.* 2020;369:m1849.  
447 doi:10.1136/bmj.m1849.
- 448 10. Le MP, Peiffer-Smadja N, Guedj J, Neant N, Mentre F, Ader F et al. Rationale of a loading dose initiation for  
449 hydroxychloroquine treatment in COVID-19 infection in the DisCoVeRy trial. *J Antimicrob Chemother.* 2020.  
450 doi:10.1093/jac/dkaa191.
- 451 11. Yao X, Ye F, Zhang M, Cui C, Huang B, Niu P et al. In Vitro Antiviral Activity and Projection of Optimized  
452 Dosing Design of Hydroxychloroquine for the Treatment of Severe Acute Respiratory Syndrome Coronavirus 2  
453 (SARS-CoV-2). *Clin Infect Dis.* 2020;71(15):732-9. doi:10.1093/cid/ciaa237.
- 454 12. Akpovwa H. Chloroquine could be used for the treatment of filoviral infections and other viral infections  
455 that emerge or emerged from viruses requiring an acidic pH for infectivity. *Cell Biochem Funct.*  
456 2016;34(4):191-6. doi:10.1002/cbf.3182.
- 457 13. Savarino A, Boelaert JR, Cassone A, Majori G, Cauda R. Effects of chloroquine on viral infections: an old  
458 drug against today's diseases? *Lancet Infect Dis.* 2003;3(11):722-7. doi:10.1016/s1473-3099(03)00806-5.
- 459 14. Rossi B, Nguyen LS, Zimmermann P, Boucenna F, Dubret L, Baucher L et al. Effect of Tocilizumab in  
460 Hospitalized Patients with Severe COVID-19 Pneumonia: A Case-Control Cohort Study. *Pharmaceuticals*  
461 *(Basel).* 2020;13(10). doi:10.3390/ph13100317.
- 462 15. Lim HS, Im JS, Cho JY, Bae KS, Klein TA, Yeom JS et al. Pharmacokinetics of hydroxychloroquine and its  
463 clinical implications in chemoprophylaxis against malaria caused by *Plasmodium vivax*. *Antimicrob Agents*  
464 *Chemother.* 2009;53(4):1468-75. doi:10.1128/AAC.00339-08.

- 465 16. Morita S, Takahashi T, Yoshida Y, Yokota N. Population Pharmacokinetics of Hydroxychloroquine in  
466 Japanese Patients With Cutaneous or Systemic Lupus Erythematosus. *Ther Drug Monit.* 2016;38(2):259-67.  
467 doi:10.1097/FTD.0000000000000261.
- 468 17. Costedoat-Chalumeau N, Amoura Z, Hulot JS, Hammoud HA, Aymard G, Cacoub P et al. Low blood  
469 concentration of hydroxychloroquine is a marker for and predictor of disease exacerbations in patients with  
470 systemic lupus erythematosus. *Arthritis Rheum.* 2006;54(10):3284-90. doi:10.1002/art.22156.
- 471 18. Tett SE, Cutler DJ, Beck C, Day RO. Concentration-effect relationship of hydroxychloroquine in patients  
472 with rheumatoid arthritis--a prospective, dose ranging study. *J Rheumatol.* 2000;27(7):1656-60.
- 473 19. Munster T, Gibbs JP, Shen D, Baethge BA, Botstein GR, Caldwell J et al. Hydroxychloroquine  
474 concentration-response relationships in patients with rheumatoid arthritis. *Arthritis Rheum.* 2002;46(6):1460-9.  
475 doi:10.1002/art.10307.
- 476 20. Carmichael SJ, Charles B, Tett SE. Population pharmacokinetics of hydroxychloroquine in patients with  
477 rheumatoid arthritis. *Ther Drug Monit.* 2003;25(6):671-81. doi:10.1097/00007691-200312000-00005.
- 478 21. Noe G, Amoura Z, Combarel D, Lori L, Tissot N, Seycha A et al. Development and Validation of a Fast  
479 Ultra-High Performance Liquid Chromatography-Fluorescent Method for the Quantification of  
480 Hydroxychloroquine and Its Metabolites in Patients With Lupus. *Ther Drug Monit.* 2019;41(4):476-82.  
481 doi:10.1097/FTD.0000000000000614.
- 482 22. Anderson BJ, Holford NH. Mechanism-based concepts of size and maturity in pharmacokinetics. *Annu Rev*  
483 *Pharmacol Toxicol.* 2008;48:303-32. doi:10.1146/annurev.pharmtox.48.113006.094708.
- 484 23. R. Core Team. R: A language and environment for statistical computing. R Foundation for Statistical  
485 Computing. Vienna, Austria. 2018.
- 486 24. Therneau T. A Package for Survival Analysis in S. version 2.38,  
487 <https://CRAN.R-project.org/package=survival>. 2015.
- 488 25. Martin-Blondel G, Ruiz S, Murriss M, Faguer S, Duhalde V, Eyvraud F et al. Hydroxychloroquine in  
489 COVID-19 patients: what still needs to be known about the kinetics. *Clin Infect Dis.* 2020.  
490 doi:10.1093/cid/ciaa558.
- 491 26. Funk-Brentano C, Salem JE, Nguyen LS, Drici MD, Roden DM. Response to the editorial "COVID-19 in  
492 patients with cardiovascular diseases": Covid-19 treatment with hydroxychloroquine or chloroquine and  
493 azithromycin: A potential risk of Torsades de Pointes. *Arch Cardiovasc Dis.* 2020;113(5):367-8.  
494 doi:10.1016/j.acvd.2020.04.001.
- 495 27. Garcia-Cremades M, Solans BP, Hughes E, Ernest JP, Wallender E, Aweeka F et al. Optimizing  
496 Hydroxychloroquine Dosing for Patients With COVID-19: An Integrative Modeling Approach for Effective  
497 Drug Repurposing. *Clin Pharmacol Ther.* 2020;108(2):253-63. doi:10.1002/cpt.1856.
- 498 28. MacGowan AP, Hamilton F, Bayliss M, Read L, Attwood M, Noel A et al. Hydroxychloroquine serum  
499 concentrations in non-critical care patients infected with SARS CoV 2. medRxiv. 2020:2020.06.23.20137992.  
500 doi:10.1101/2020.06.23.20137992.
- 501 29. Themans P, Belkhir L, Dauby N, Yombi JC, De Greef J, Delongie KA et al. Population Pharmacokinetics of  
502 Hydroxychloroquine in COVID-19 Patients: Implications for Dose Optimization. *Eur J Drug Metab*  
503 *Pharmacokinet.* 2020. doi:10.1007/s13318-020-00648-y.
- 504 30. Karatza E, Ismailos G, Marangos M, Karalis V. Optimization of hydroxychloroquine dosing scheme based  
505 on COVID-19 patients' characteristics: a review of the literature and simulations. *Xenobiotica.* 2020:1-12.  
506 doi:10.1080/00498254.2020.1824301.

- 507 31. von Rosensteil NA, Adam D. Macrolide antibacterials. Drug interactions of clinical significance. *Drug Saf.*  
508 1995;13(2):105-22. doi:10.2165/00002018-199513020-00005.
- 509 32. Jallouli M, Galicier L, Zahr N, Aumaitre O, Frances C, Le Guern V et al. Determinants of  
510 hydroxychloroquine blood concentration variations in systemic lupus erythematosus. *Arthritis Rheumatol.*  
511 2015;67(8):2176-84. doi:10.1002/art.39194.
- 512 33. Chasset F, Arnaud L, Costedoat-Chalumeau N, Zahr N, Bessis D, Frances C. The effect of increasing the dose  
513 of hydroxychloroquine (HCQ) in patients with refractory cutaneous lupus erythematosus (CLE): An open-label  
514 prospective pilot study. *J Am Acad Dermatol.* 2016;74(4):693-9 e3. doi:10.1016/j.jaad.2015.09.064.
- 515 34. Nguyen LS, Dolladille C, Drici MD, Fenieux C, Alexandre J, Mira JP et al. Cardiovascular Toxicities  
516 Associated With Hydroxychloroquine and Azithromycin: An Analysis of the World Health Organization  
517 Pharmacovigilance Database. *Circulation.* 2020;142(3):303-5. doi:10.1161/CIRCULATIONAHA.120.048238.
- 518 35. Funck-Brentano C, Nguyen LS, Salem JE. Retraction and republication: cardiac toxicity of  
519 hydroxychloroquine in COVID-19. *Lancet.* 2020;396(10245):e2-e3. doi:10.1016/S0140-6736(20)31528-2.
- 520 36. Gerard A, Romani S, Fresse A, Viard D, Parassol N, Granvullemin A et al. "Off-label" use of  
521 hydroxychloroquine, azithromycin, lopinavir-ritonavir and chloroquine in COVID-19: A survey of cardiac  
522 adverse drug reactions by the French Network of Pharmacovigilance Centers. *Therapie.* 2020;75(4):371-9.  
523 doi:10.1016/j.therap.2020.05.002.
- 524 37. Roustit M, Guilhaumou R, Molimard M, Drici MD, Laporte S, Montastruc JL et al. Chloroquine and  
525 hydroxychloroquine in the management of COVID-19: Much kerfuffle but little evidence. *Therapie.*  
526 2020;75(4):363-70. doi:10.1016/j.therap.2020.05.010.
- 527 38. Cavalcanti AB, Zampieri FG, Rosa RG, Azevedo LCP, Veiga VC, Avezum A et al. Hydroxychloroquine with  
528 or without Azithromycin in Mild-to-Moderate Covid-19. *N Engl J Med.* 2020. doi:10.1056/NEJMoa2019014.
- 529 39. Skipper CP, Pastick KA, Engen NW, Bangdiwala AS, Abassi M, Lofgren SM et al. Hydroxychloroquine in  
530 Nonhospitalized Adults With Early COVID-19: A Randomized Trial. *Ann Intern Med.* 2020.  
531 doi:10.7326/M20-4207.
- 532 40. Mitja O, Corbacho-Monne M, Ubals M, Tebe C, Penafiel J, Tobias A et al. Hydroxychloroquine for Early  
533 Treatment of Adults with Mild Covid-19: A Randomized-Controlled Trial. *Clin Infect Dis.* 2020.  
534 doi:10.1093/cid/ciaa1009.
- 535 41. Horby P, Mafham M, Linsell L, Bell JL, Staplin N, Emberson JR et al. Effect of Hydroxychloroquine in  
536 Hospitalized Patients with COVID-19: Preliminary results from a multi-centre, randomized, controlled trial.  
537 medRxiv. 2020:2020.07.15.20151852. doi:10.1101/2020.07.15.20151852.
- 538