



HAL
open science

Replacing Metals with Oxides in Metal-Assisted Chemical Etching Enables Direct Fabrication of Silicon Nanowires by Solution Processing

Maxime Gayrard, Justine Voronkoff, Cedric Boissiere, David Montero, Laurence Rozes, Andrea Cattoni, Jennifer Péron, Marco Faustini

► To cite this version:

Maxime Gayrard, Justine Voronkoff, Cedric Boissiere, David Montero, Laurence Rozes, et al.. Replacing Metals with Oxides in Metal-Assisted Chemical Etching Enables Direct Fabrication of Silicon Nanowires by Solution Processing. Nano Letters, In press, 10.1021/acs.nanolett.1c00178. hal-03148579

HAL Id: hal-03148579

<https://hal.sorbonne-universite.fr/hal-03148579v1>

Submitted on 22 Feb 2021

HAL is a multi-disciplinary open access archive for the deposit and dissemination of scientific research documents, whether they are published or not. The documents may come from teaching and research institutions in France or abroad, or from public or private research centers.

L'archive ouverte pluridisciplinaire **HAL**, est destinée au dépôt et à la diffusion de documents scientifiques de niveau recherche, publiés ou non, émanant des établissements d'enseignement et de recherche français ou étrangers, des laboratoires publics ou privés.

Replacing Metals with Oxides in Metal-Assisted Chemical Etching Enables Direct Fabrication of Silicon Nanowires by Solution Processing

*Maxime Gayrard,¹ Justine Voronkoff,¹ Cédric Boissière,¹ David Montero,² Laurence Rozes,¹
Andrea Cattoni,³ Jennifer Peron,⁴ Marco Faustini^{1*}*

1 Sorbonne Université, CNRS, Collège de France, Laboratoire Chimie de la Matière Condensée de Paris (LCMCP), F-75005 Paris, France

2 Sorbonne Université, Institut des Matériaux de Paris Centre (IMPC FR 2482), UFR de Chimie Campus Jussieu, 75252 Paris, France

3 Centre de Nanosciences et de Nanotechnologies (C2N), CNRS UMR 9001, Université Paris-Saclay, Palaiseau, France.

4 Université de Paris, ITODYS, CNRS, UMR 7086, 15 rue J-A de Baïf, F-75013 Paris, France

e-mail: marco.faustini@sorbonne.universite.fr

KEYWORDS Metal Assisted Chemical Etching, Oxides, Nanofabrication, Sol-Gel, Nanoimprint, Block-copolymer

ABSTRACT

Metal-Assisted Chemical Etching (MACE) has emerged as effective method to fabricate high aspect ratio nanostructures. This method requires a catalytic mask that is generally composed by a metal. Here, we challenge the general view that the catalyst needs to be metal by introducing Oxide-assisted Chemical Etching (OACE). We perform etching with metal oxides such as RuO_2 and IrO_2 , by transposing materials used in electrocatalysis to nanofabrication. These oxides can be solution-processed as polymers exhibiting similar capabilities of metals for MACE. Nanopatterned oxides can be obtained by direct nanoimprint lithography or block-copolymer lithography from chemical solution on large scale. High aspect ratio silicon nanostructures were obtained at the sub-20 nm scale exclusively by cost-effective solution processing by halving the number of fabrication steps compared to MACE. More in general, OACE is expected to stimulate new fundamental research on chemical etching assisted by other materials providing new possibilities for device fabrication.

1 Introduction

The fabrication of high aspect ratio silicon nanostructures is of high interest for a number of applications including photovoltaics,^{1, 2} 3D transistors,³ batteries,⁴ sensing,⁵ optics,⁶ wetting,⁷ catalysis⁸ and microfluidics.⁹ Metal assisted chemical etching (MACE) has emerged as a convenient alternative to dry etching^{10, 11} to prepare large-scale surfaces by a low cost, wet etching method.^{12, 13} The mechanism is based on a chemical etching in solution that is catalyzed when a noble metal is in contact with the Si surface.¹⁴ The etchant solution is composed of HF and an oxidative agent, typically H₂O₂. The noble metal sinks into the substrate, generating deep Si nanostructures with geometry depending on the initial morphology of the noble metal layer. This process is widely used to obtain silicon nanowires but it was also extended to other semiconducting materials such as Ge, GaAs¹⁵ and InP¹⁶ with important implications for solar-cells for instance. The MACE process is now well established in the nanofabrication community and its complex mechanism is still a matter of scientific debate to understand the role of each component (metal, etchant, oxidant, semiconductor...).¹⁷ In addition some technological challenges need to be tackled, especially for the preparation sub-micrometric features at large scale by fabrication processes with a limited number of steps. By definition the etching catalyst in MACE is a metal, typically gold, silver or platinum. The preparation of high aspect ratio well defined features requires the fabrication of a “negative” noble metal mask. For instance, arrays of nanowires are made from perforated noble metal layers. The fabrication of well-defined metallic etching masks requires multiple steps, typically involving patterning of an intermediate material (resist), deposition of the metal and lift-off process. Lift-off processes require a break in the gold film after deposition on resist features. This multistep process is especially

challenging for the fabrication of sub-100 nm nanostructures. In addition, some common noble metals films have poor chemical (Ag) or/and thermal stability and have the tendency to de-wet if annealed at relatively low temperature. In order to fulfill the requirements for a further scale-up and industrialization, developing of a simpler and robust way to fabricate etching mask would be strongly beneficial. An interesting approach based on the direct electrochemical imprinting of silicon (called Mac-Imprint) was recently introduced. It uses a patterned polymer stamp coated with a noble metal catalyst to etch silicon in contact with the stamp by MACE.^{18 19} While this method is appealing, it is not suited for the fabrication of high aspect ratio Si nanostructures because the catalytic stamp cannot sink into the silicon substrate. An ideal option would consist in replacing the catalytic metals with other materials that can be directly processed and patterned as a polymer by solution processing. However, this alternative has not been widely considered because the general view is that, in MACE, the catalyst is a metal. Recently, alternative catalytic materials have been proposed including graphene,²⁰ graphene oxide,²¹ carbon nanotubes²² or titanium nitride.²³ However, these alternative processes require multistep pattern transfer as in the case of metals and are generally less effective than MACE for the fabrication of high aspect ratio structures. From a chemical point of view an efficient mask for MACE should be: (i) a good catalyst for the involved electrochemical reactions (ii) a conductive material to allow holes migrations, (iii) a stable material in harsh etching conditions. Interestingly, these requirements present striking analogies with those needed for electrocatalysts used for the oxygen evolution reaction. In the latter case, the most efficient materials are not noble metals but oxides.²⁴ For instance, RuO₂ and IrO₂ are known to be excellent electrocatalysts, conductive and stable in extremely oxidative conditions.²⁵ RuO₂ and

IrO_2 present working function $>5 \text{ eV}$ ²⁶ similar to those of metals (5.1eV and 4.26eV for Au and Ag respectively)²⁷ but higher oxidation number (IV). For RuO_2 , the redox potential with its oxidized counterpart $\text{RuO}_4/\text{RuO}_2$ is 1.2-1.3 V,²⁸ a value between those of Au^{3+}/Au (1.5V) and Ag^+/Ag (0.8V).²⁷ In addition, it has been recently reported that they can be prepared by chemical methods enabling direct shaping into porous spheres^{29, 30} or films.³¹⁻³³ In this work, bridging research on electrocatalysts and MACE processing, we introduce Oxide-Assisted Chemical Etching (OACE), in which the metallic mask is replaced by an oxide counterpart. We show that RuO_2 and IrO_2 nanopatterned films can be obtained by a "sol-gel process" directly from solution deposition. Morphological and compositional evolution of the oxide layers were characterized by in-situ ellipsometry, Scanning Electron Microscopy, Atomic Force Microscopy and X-Ray Photoelectron Spectroscopy (XPS). We demonstrate the versatility of the approach by implementing two different patterning methods for noble metal oxides both characterized by a limited number of fabrication steps: direct soft-nanoimprint lithography and block-copolymer micellar lithography. High aspect ratio silicon nanostructures are obtained with lateral dimensions down to the sub-20 nm scale by halving the number of fabrication steps with respect to previous approaches based on MACE. Importantly, this work extends the compositional threshold of the catalyst for chemical etching beyond metals. This report will trigger new fundamental research on chemical etching assisted by other materials providing new possibilities for device fabrication.

2 Results and discussion

2.1 Soft-Nanoimprinting Lithography

As a case of study, we describe the fabrication of Si nanostructured by OACE using RuO₂ masks fabricated by direct soft-nanoimprinting lithography of a sol-gel derived film. A schematic illustration of the process is reported in Figure 1. The film is applied by dip-coating deposition from RuCl₃ xH₂O dissolved in hydro-alcoholic solution. Due to hygroscopic nature of the Ru salts, the dip-coating process was performed in controlled atmosphere to keep the relative humidity below 10%.³⁴ The initial film thickness after dip-coating was around 180 nm as determined by spectroscopic ellipsometry. After evaporation of the solvent, the film is immediately embossed by patterned PDMS-based stamp previously degassed in vacuum. The layer is stabilized at 130°C before demolding. The imprinting process is pressure-less, does not require any imprinting equipment and can be realized on large scale.³⁵⁻³⁷ Figure S1 in Supplementary Material displays the photo of a patterned sample of 4 cm² exhibiting areas with different iridescent colors characteristic of diffractive gratings with periodicities ranging from 400 to 1000 nm.

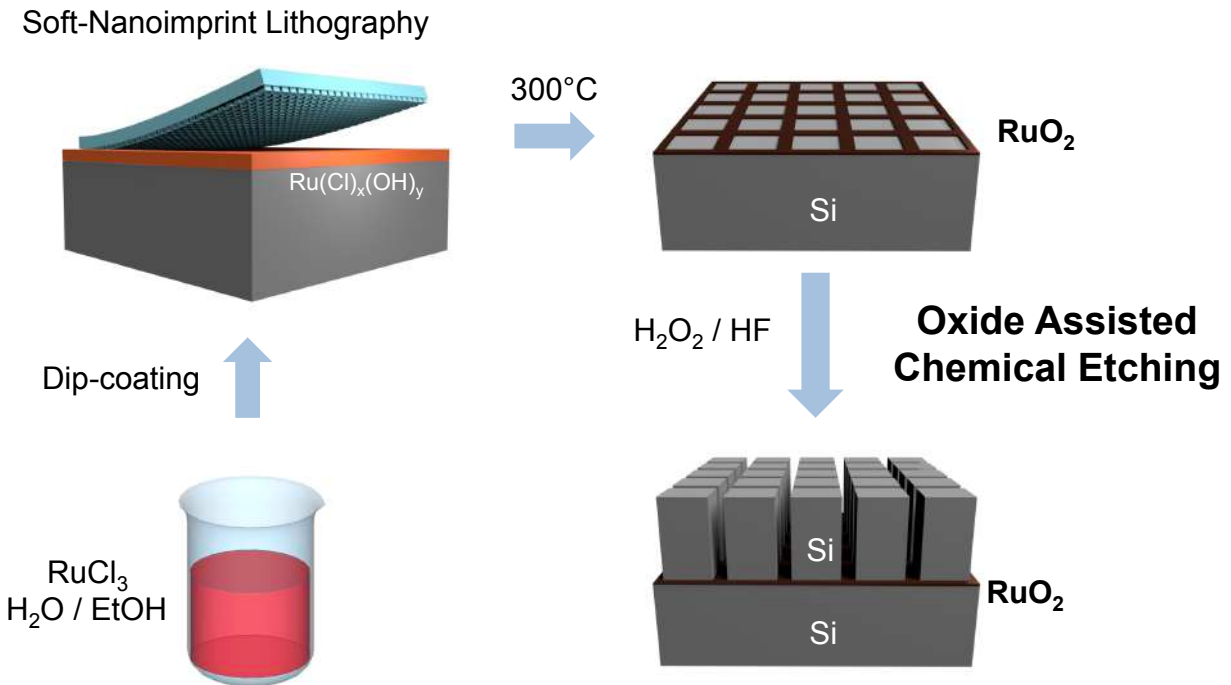


Figure 1 Scheme of the fabrication of silicon nanowires fabricated by Oxide Assisted Chemical Etching from RuO_2 masks with squared nanoholes obtained by direct soft-nanoimprinting lithography

The film is then converted to RuO_2 by thermal treatment in air at temperature above 225°C . The final etching step is then performed in a $\text{HF}/\text{H}_2\text{O}_2$ solution by using the RuO_2 catalytic mask. The different steps of the fabrication process have been investigated for masks composed of arrays of squared perforations at the sub-micrometric scale. Figure 2(a) and (b) display the SEM-FEG micrographs of the mask after thermal treatment at 300°C . One of the common drawbacks of the films patterned by nanoimprinting lithography is that a residual layer remains

after embossing and an additional step of dry-etching is required to complete the lithography process.

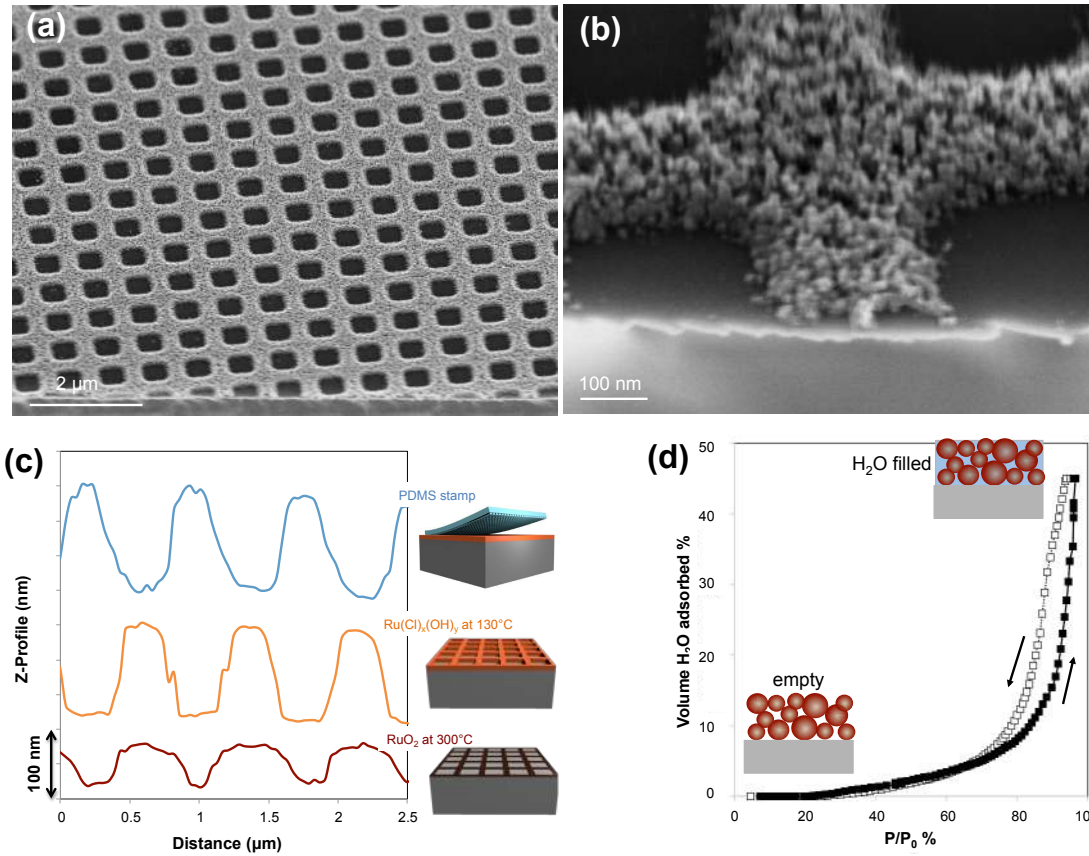


Figure 2 Scanning Electron micrographs of the RuO_2 layer after thermal treatment at 300°C at (a) lower magnification and (b) higher magnification. (c) Atomic Force Microscopy Z-profiles of the PDMS stamp, of the patterned layer after demolding and after annealing at 300°C . (d) Adsorption/desorption curves of the RuO_2 plain film obtained by Environmental Ellipsometric Porosimetry.

Very interestingly, in these conditions (initial thickness $< 200\text{nm}$), the Ru-based layer patterned films do not present a residual layer in the entire surface as displayed in Figure 2(b). The

absence of the residual layer was also observed for other geometries such as grooves or triangular holes. (Figure S2 in Supplementary Material). This can be attributed to the poor affinity between the $\text{Ru}(\text{Cl})_x(\text{OH})_y$ films and the silicon substrate that enhance the mobility of the Ru species during imprinting. The efficiency of the imprinting process was further investigated by Atomic Force Microscopy. Figure 2(c) shows a good correspondence between the Z-profiles of the original PDMS stamp and patterned layer after stabilization at 130°C (and demolding). The profile of the RuO_2 sample annealed at 300°C indicates a significant shrinkage in the perpendicular direction (around 50%). The thermal treatment induces volumetric shrinkage and crystallization of the RuO_2 film leading to a conductive nanoparticle-based film. These two effects have been investigated by in-situ spectroscopic ellipsometry on a plane film during the thermal treatment.³⁸ The experiment was performed into an environmental chamber by heating in air the sample from room temperature up to 300°C. Since the material is evolving during thermal treatment, two models have been used for the thermal ellipsometric analysis. A first model for temperatures below the crystallization describing non-conductive layer composed of Lorentz oscillators to describe the absorption of the material especially in the visible range (Figure S3 in Supplementary Material).³⁹ For temperature above the crystallization, a second model was used: in addition to the Lorentz oscillators, a Drude model was added to describe the optical properties that are characteristic for conductive films (Figure S4 in Supplementary Material). Starting from these models, a full analysis was then performed. The evolution of the thickness is reported in Figure 3(a). After deposition, a large shrinkage of the film is observed by heating the material from room temperature to 150°C. This thickness contraction can be attributed to the loss of adsorbed water leaving the $\text{Ru}(\text{Cl})_x(\text{OH})_y$ species

that, at room temperature, are highly hygroscopic. A second contraction is observed between 200°C and 220°C corresponding to the formation of the RuO₂. The layer is made of RuO₂ nanocrystals having rutile structure as confirmed by X-Ray diffraction as shown in Figure S5 in Supplementary Material.

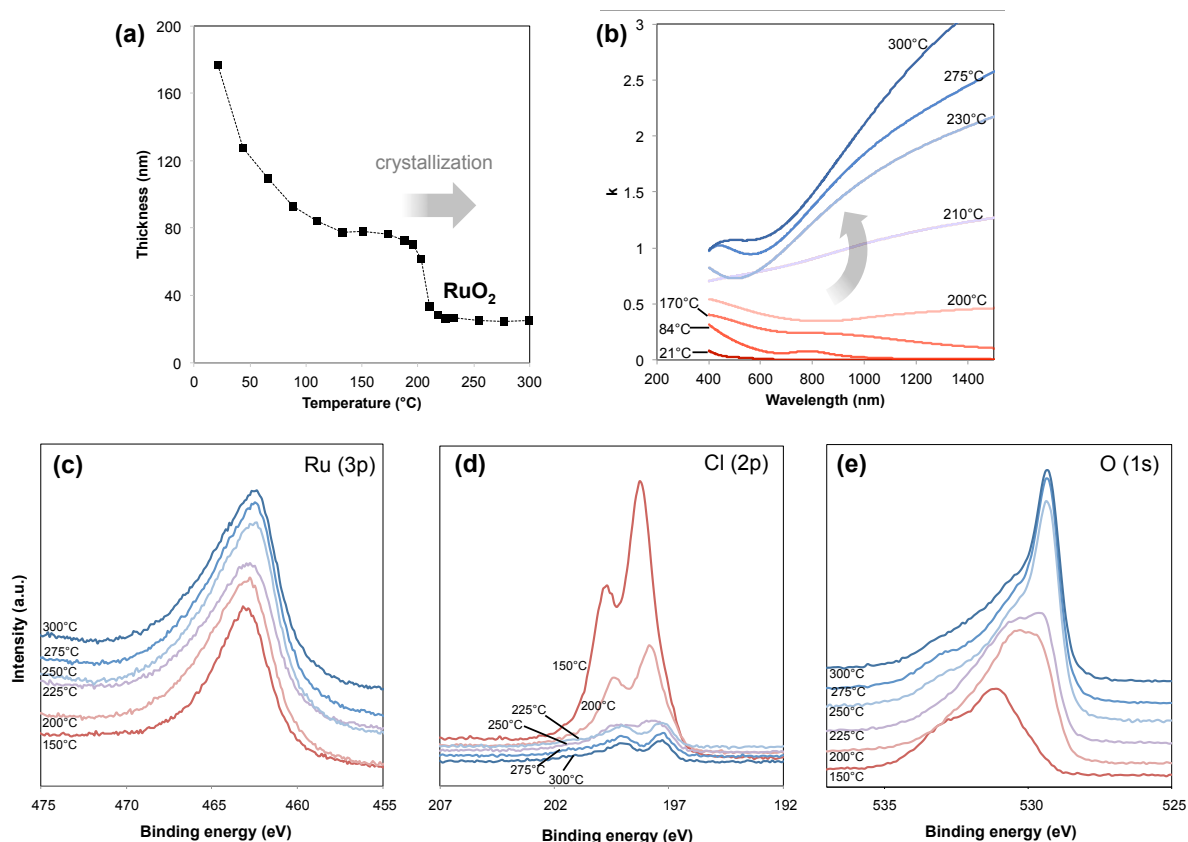


Figure 3 In situ thermal ellipsometric analysis: (a) evolution of the thickness as function of the temperature; (b) evolution of the extinction coefficient k with the temperature: the insulating-conductive transition is observed between 200 and 230°C. XPS spectra recorded in the Ru(3p) region (c), Cl(2p) region (d), and O(1s) region (e) on films calcined at different temperatures.

The diffractogram of the layer calcined at 300°C displays the characteristic peaks of the rutile phase having average size of 15 nm as determined by Scherrer equation⁴⁰ (Figure S5 in

Supplementary Material). The transformations occurring during thermal treatment could be confirmed by monitoring the evolution of the extinction coefficient (k) as function of wavelength and temperature as obtained by the ellipsometric fit. This evolution is reported in Figure 3(b). Below crystallization, the film presents low value of k , especially at low wavelength in the visible range that increases with the temperature. This can be attributed to the presence of colored Ru complexes in the film, for which the k values increase as the volume decreases. Starting from 200°C the value of k drastically increases especially in the near infrared region; this behavior is characteristic of the formation of a conductive film. The chemical transformations can also be followed by XPS. Ru(3p), Cl(2p) and O(1s) core-level spectra of samples calcined from 150°C to 300°C are displayed in Figure 3(c), (d), and (e), respectively. Since Ru(3d) core levels superimpose the C(1s) core level, the Ru(3p) region was analyzed. As an electron conductor, RuO₂ has an asymmetric core level spectra and for this reason, highly reliable quantification of the Ru oxidized species (Ru(IV), Ru(III)) using XPS is challenging and caution is required. However, from Ru (3p) spectra plot in Figure 3(c), we can see that the Ru(3p) peak shifts progressively from 463.1 eV to 462.6 eV when the calcination temperature is increased from 150°C to 225°C. From 225°C to 300°C, the Ru (3p) signal remains at the same position, 462.6 eV, being characteristic of Ru(IV) into RuO₂.⁴¹ Concomitantly to shift observed for Ru(3p) signals, the peaks characteristic of the Cl 2p 3/2 and 2p 1/2 initially located at 198.3 eV and 199.7 eV shifts towards lower values down to 197.3 eV and 198.7 eV, respectively (Figure 3d). This shift is accompanied by a strong decrease in the Cl signal intensity, Cl/Ru atomic ratio decreases from *ca.* 3 down to *ca.* 0.3 when the calcination temperature is increased from 150°C to 250°C. Finally, the spectra in Figure 3(e) indicates that the transition

from hydroxylated species into metal-oxygen bonds occurs in the same temperature range since the intensity of the O(1s) component located at 531 eV for the sample calcined at 150°C and characteristic of M-(OH) bonds decreases at the expense of the peak centered at 529.3 eV and characteristic of M-O bond in metal oxides. From XPS analysis, we confirm that the transition from Ru(III) into Ru(IV) occurs simultaneously as the departure of chlorine and the formation of Ru-O bonds, and, the transition from Ru(III) into RuO₂ is complete at 225°C, in agreement with thermal ellipsometric analysis. As already shown in SEM photos in Figure 3(d) the RuO₂ patterned films are thus composed by a network of percolated conductive RuO₂ nanocrystals with inter-particle porosity. The porosity was investigated by environmental ellipsometric porosity on unpatterned films (detailed analysis in S6 and S7 Supplementary Material).^{42 43} In Figure 2 (d), the adsorption/desorption isotherm reveals a large increase of % vol of water adsorbed between between 70% and 100% % P/P_0 due to the capillarity condensation of water vapor in the pores corresponding to the interparticle voids. The porous volume and average pore size were quantified to be 45% and 12 nm in agreement with SEM observations. The presence of the nanoporosity is not a drawback in the MACE process. As demonstrated for noble metals, using a nanoporous catalyst is beneficial for the etching process⁴⁴ enabling access of the hydrofluoric acid to the silicon surface. The RuO₂ masks fabricated by direct nanoimprint lithography were then used as catalyst for the OACE of silicon. As an example Figure 4(a) and (c) represent SEM micrographs of a single RuO₂ nanotrench before and after chemical etching respectively. This geometry allows cross-section visualization of the inner structure of Si after etching. From Figure 4(c) and Figures S8 in Supplementary Material, no porosity is visible by SEM or TEM in both the Si nanotrenches, nanowires and in the

Si substrate underneath the RuO₂ mask. After etching, the RuO₂ catalytic mask is located at the bottom of the Si trench confirming that during the reaction the RuO₂ maintains an intimate electrical contact with the silicon, sinking with the silicon as it is etched.

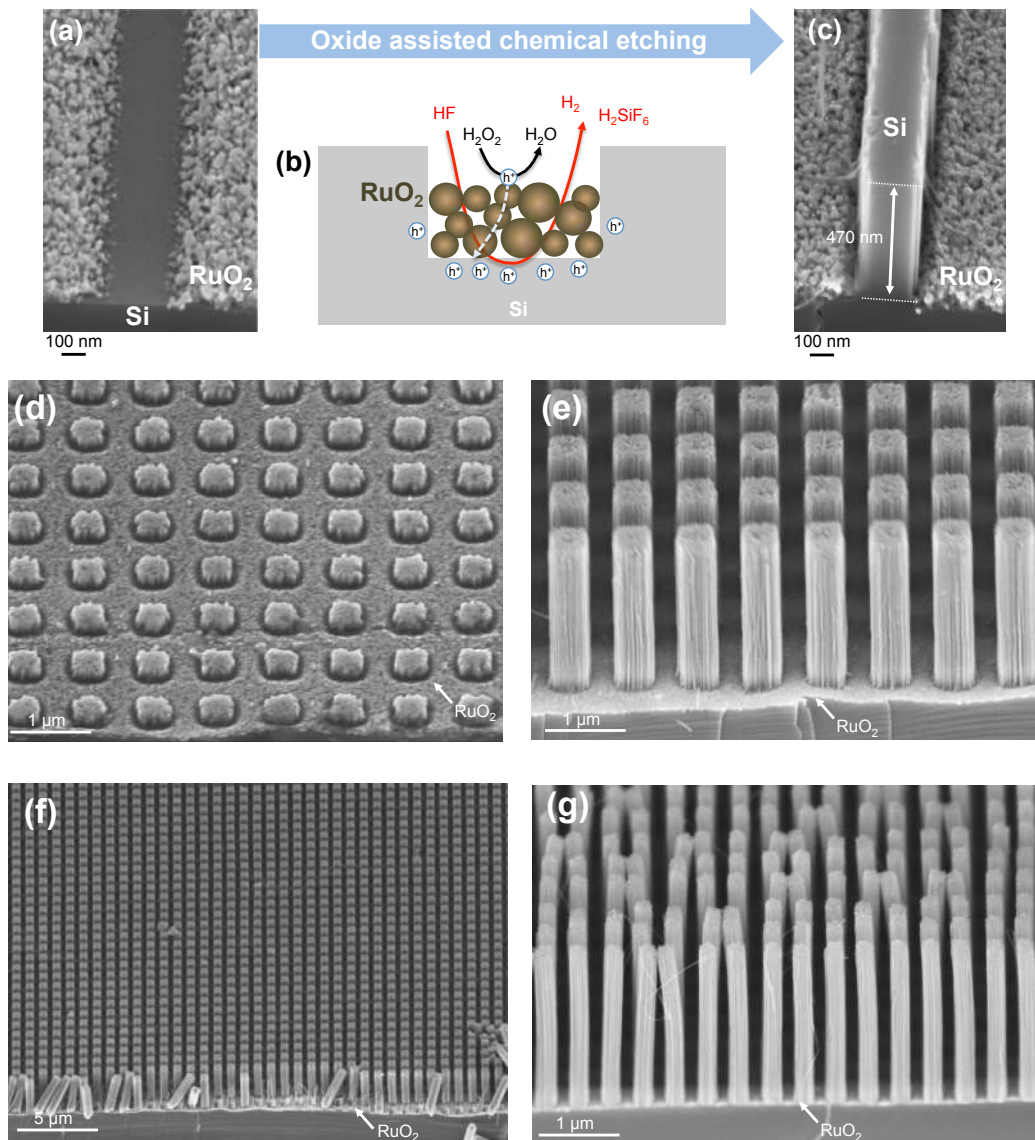


Figure 4 Scanning Electron micrographs of (a) RuO₂ nanochannel and (c) silicon nanotrench after oxide assisted chemical etching. (b) Scheme of the proposed OACE mechanism. (d) and (e) SEM micrographs of 485nm sized silicon nanowires obtained after 30 s and 5 minutes of

etching (f) lower magnification SEM of the sample shown in (e). (g) SEM of 230nm sized silicon nanowires obtained after 5 minutes of etching.

In our experiment, we employed a typical composition for etching solution containing H_2O_2 and HF on a p-doped (boron) Si wafer (100). Immediately after immersion in the etching solution, bubbles developed from the surfaces. Indeed both compounds are needed for the process to take place. Without H_2O_2 , no etching and bubble formation was observed. In contrast, delamination of the RuO_2 layer is observed after several minutes in solution containing only HF, probably due to the presence of a thin SiO_2 layer formed on the Si substrate during thermal treatment. This observations suggest that, in our conditions, the mechanism of Oxide-Assisted Chemical Etching doesn't differ significantly from the typical Metal-Assisted Chemical Etching. The proposed mechanism is thus illustrated in Figure 4 (b). Figures 4(e) and (f) show SEM micrographs at different magnification of the sample composed of silicon nanopillars arrays having periodicity of 1000nm obtained after 5 minutes etching. The pillars display an average size of 485nm and a height of 1750 nm. The same experiment was performed on an array with smaller dimensions and lower etching time as shown in Figure 4(g) and (d). In this case, the pillar size and height are respectively 230nm and 1900nm resulting in aspect ratio above 8. In case of elongated nanostructures, some pairs of pillars show typical clustering caused by capillary forces upon drying and electrostatic interactions.⁴⁵ Finally, the same process was reproduced on patterns with different geometries including triangular grooves or triangular pillars (Figure S2 in Supplementary Material). Due to polycrystalline nature of the RuO_2 and to the relatively large crystal size at 300°C, the Line-Edge Roughness (LER) on the pattern is quite high. The LER can be reduced by limiting the crystal growth using a

lower annealing temperature. This is especially important for the fabrication high aspect ratio nanostructures with higher resolution as shown in the following.

2.2 Block-Copolymer Micellar Lithography

To confirm the versatility of the approach including for high-resolution nanofabrication at the sub-20nm scale a new method for the fabrication of the etching mask is proposed based on block-copolymer micellar nanolithography. This strategy to obtain nanoporated ceramic layers was already developed for common metal oxides such as TiO_2 ⁴⁶ but never demonstrated for noble metal oxides so far.

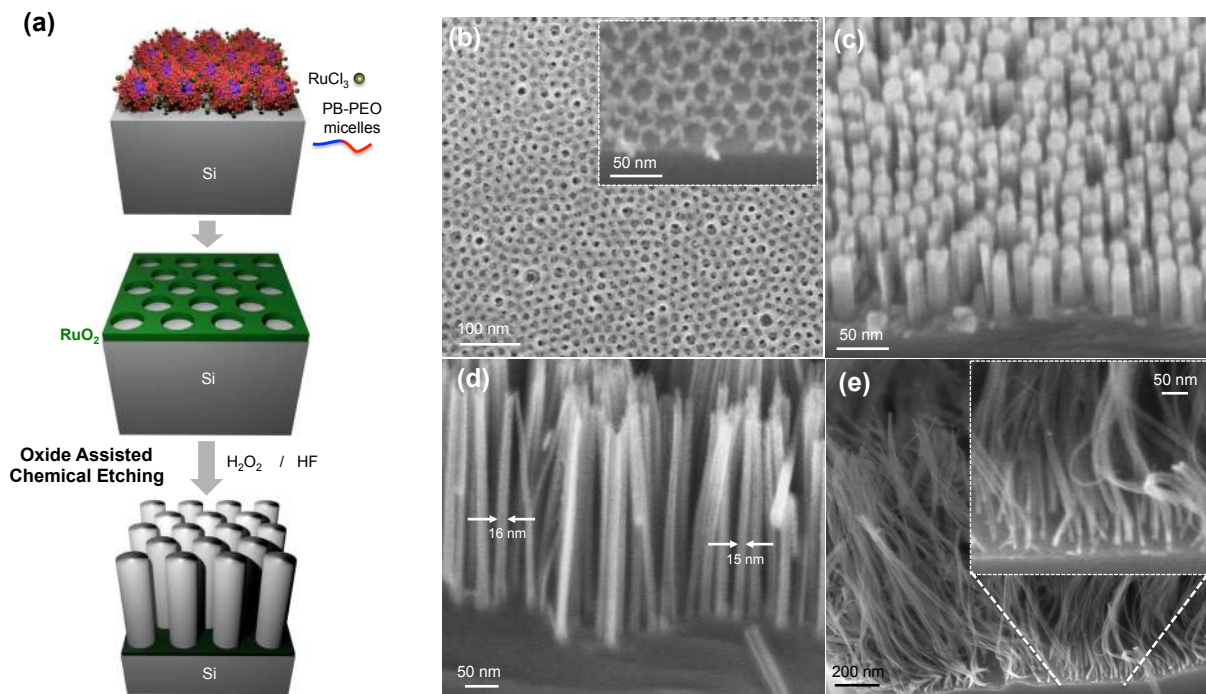


Figure 5 (a) Nanofabrication scheme based on block-copolymer micellar lithography and Oxide assisted chemical etching. (b) block-copolymer templated RuO₂ layer before etching. (c), (d) and (e) Sub-20 nm silicon nanowires obtained after 1, 5, 30 minutes of etching respectively.

The fabrication scheme is illustrated in Figure 5(a). A PB-PEO block-copolymer ($15\,600\text{ g mol}^{-1}$ ($\text{PB}_{112}\text{PEO}_{227}$) was first dissolved in a hydro-alcoholic solution in presence of RuCl_3 . In these conditions, the block-copolymer form micelles having a hydrophobic PB core and a hydrophilic PEO shell.⁴⁷ A film is then obtained on the silicon substrate by dip-coating from this solution. The deposition conditions were adjusted to obtain a monolayer of micelles that are surrounded by the Ru precursor. The film was then heated at 250°C in air to decompose the PB-PEO block-copolymer⁴⁶ and convert the $\text{Ru}(\text{Cl}_x\text{OH}_y)$ species into conductive RuO_2 . After annealing the RuO_2 film is composed of pores having diameter of 20nm and periodicity of around 50 nm as shown in the SEM micrograph in Figure 5(b). In order to limit the crystal growth, the calcination temperature was optimized. A thermal treatment at 250°C for 30 seconds was found to be the best compromise to ensure conversion to metal-like RuO_2 while retaining the surface nanostructuration. As shown in the SEM micrographs in Figure S9 in Supplementary Material, annealing at higher temperatures or for longer times resulted in crystal growth progressive loss of the nanofeatures. The SEM micrographs in Figure 5 c, d and e display the samples after Oxide-Assisted Chemical Etching for 1, 5, 30 minutes respectively. The etching process results in sub-20 nm silicon nanowires (as dictated by the initial perforation size) with length that increases pseudo-linearly as function of the etching time (Figure S10 in Supplementary Material). Notably, the silicon nanowires obtained after 30 minutes etching display lengths exceeding 1.2 micrometers corresponding to aspect ratio above 60. As shown in Figure S10, the etching rate of RuO_2 is higher than conventional electroplated Ag in the same etching conditions (composition, substrate). While this observation confirms the efficiency of RuO_2 as etching materials, more systematic studies are needed to compare the etching rate of oxides

with respect to metals in optimized etching conditions and with similar mask geometry. The OACE is not limited to RuO₂. Following the same principles other oxides used as electrocatalysts could be envisioned. Among them, IrOx is another of the most active and stable electrocatalyst for the oxygen evolution reaction. Figure S11 (a and b) in Supplementary Material report the fabrication of sub 20-nm nanowires arrays obtained by OACE starting from IrOx nanomasks. As detailed previously, the masks were prepared by block-copolymer micellar lithography in presence of IrCl₃. After deposition a thermal treatment at 375°C was applied since the formation of iridium oxide occurs at higher temperatures as respect to ruthenium oxide.²² We further demonstrate that the size of the nanowires can be tuned by applying same method but with PB-PEO block-copolymers with higher molecular length (75 500 g mol⁻¹ PB₆₄₀PEO₉₈₉,) resulting in perforations and nanowire's size of 60 nm (Figure S11 c and d in Supplementary Material).

3 Conclusions and perspectives

Summarizing, in this contribution we show that solution-processed oxides can replace metallic catalysts in Metal-Assisted Chemical Etching for nanofabrication of silicon nanowires. The concept was demonstrated with RuO₂ and IrO₂ whose conductivity, stability and catalytic properties area already exploited in other fields such as electrocatalysis. From an applicative point of view, we show here that nanostructured oxides can be obtained by solution-processing and directly patterned to fabricate catalytic masks for etching on large scale. The versatility of the approach was demonstrated by applying two high-throughput, low-cost patterning methods: direct soft-nanoimprinting lithography of sol-gel based films and block-copolymer

micellar lithography. In particular, fabrication of sub-20 nm silicon nanowires was achieved by OACE meeting the current state of the art of MACE in terms of resolution yet by reducing by half the number of nanofabrication steps. This gain is shown in Figure S12 in Supplementary Material by comparing our approach with a previously reported nanofabrication scheme to prepare sub-20 nm SiNWs by block-copolymer lithography coupled with MACE⁴⁸. By our approach, the fabrication of the mask and of the silicon nanowires is carried exclusively by costless solution processing and does not require dedicated equipment such as reactive ion etching or sputtering. In perspective, the preparation of the oxide catalytic layers can also be extended to other solution processing methods (spray or spin coating, ink-jet, roll-to-roll printing) or to other technologies such as electroplating or chemical vapor deposition. This method could also be extended to other oxides or multimetallic oxides in which composition, porosity, doping or crystallinity can be tuned to control the etching rate or quality. More generally, these results extend the compositional threshold of the catalysts used for MACE opening interesting perspectives in terms of basic research on catalytic etching applied to nanofabrication.

ASSOCIATED CONTENT

Materials and Methods are included in Supporting Information

AUTHOR INFORMATION

Corresponding Author

marco.faustini@sorbonne-universite.fr

Author Contributions

The manuscript was written through contributions of all authors. All authors have given approval to the final version of the manuscript.

Funding Sources

This work was supported by French state funds managed by the National Research Agency (ANR) through the MetaFleSS project, grant no. ANR-17-CE09-0027. The work was also partially supported by the French RENATECH network.

ACKNOWLEDGMENT

We thank the Institut des Matériaux de Paris Centre (IMPC FR2482) for servicing FEGSEM & EDX instrumentation and Sorbonne Université, CNRS and C’Nano projects of the Région Ile-de-France for funding.

REFERENCES

1. Li, X. Metal assisted chemical etching for high aspect ratio nanostructures: A review of characteristics and applications in photovoltaics. *Current Opinion in Solid State and Materials Science* 2012, 16, 71-81.
2. Narasimhan, V. K.; Hymel, T. M.; Lai, R. A.; Cui, Y. Hybrid metal–semiconductor nanostructure for ultrahigh optical absorption and low electrical resistance at optoelectronic interfaces. *ACS nano* 2015, 9, 10590-10597.
3. Van Olmen, J.; Mercha, A.; Katti, G.; Huyghebaert, C.; Van Aelst, J.; Seppala, E.; Chao, Z.; Armini, S.; Vaes, J.; Teixeira, R. C. In *3D stacked IC demonstration using a through silicon via first approach*, 2008 IEEE International Electron Devices Meeting, IEEE: 2008; pp 1-4.
4. Chan, C. K.; Peng, H.; Liu, G.; Mcllwraith, K.; Zhang, X. F.; Huggins, R. A.; Cui, Y. High-performance lithium battery anodes using silicon nanowires. *Nature nanotechnology* 2008, 3, 31-35.
5. Peng, K.-Q.; Wang, X.; Lee, S.-T. Gas sensing properties of single crystalline porous silicon nanowires. *Applied Physics Letters* 2009, 95, 243112.

6. Romano, L.; Kagias, M.; Vila-Comamala, J.; Jefimovs, K.; Tseng, L.-T.; Guzenko, V. A.; Stampanoni, M. Metal assisted chemical etching of silicon in the gas phase: a nanofabrication platform for X-ray optics. *Nanoscale Horizons* 2020, 5, 869-879.
7. Xiu, Y.; Zhu, L.; Hess, D. W.; Wong, C. P. Hierarchical silicon etched structures for controlled hydrophobicity/superhydrophobicity. *Nano letters* 2007, 7, 3388-3393.
8. Yamada, Y. M. A.; Yuyama, Y.; Sato, T.; Fujikawa, S.; Uozumi, Y. A Palladium-Nanoparticle and Silicon-Nanowire-Array Hybrid: A Platform for Catalytic Heterogeneous Reactions. *Angewandte Chemie* 2014, 126, 131-135.
9. Ko, D.-H.; Ren, W.; Kim, J.-O.; Wang, J.; Wang, H.; Sharma, S.; Faustini, M.; Kim, D.-P. Superamphiphobic silicon-nanowire-embedded microsystem and in-contact flow performance of gas and liquid streams. *ACS nano* 2016, 10, 1156-1162.
10. Wu, B.; Kumar, A.; Pamarthy, S. High aspect ratio silicon etch: A review. *Journal of applied physics* 2010, 108, 9.
11. Faustini, M.; Drisko, G. L.; Letailleux, A. A.; Montiel, R. S.; Boissière, C.; Cattoni, A.; Haghiri-Gosnet, A. M.; Lerondel, G.; Grosso, D. Self-assembled titanium calcium oxide nanopatterns as versatile reactive nanomasks for dry etching lithographic transfer with high selectivity. *Nanoscale* 2013, 5, 984-990.
12. Huang, Z.; Geyer, N.; Werner, P.; De Boor, J.; Gösele, U. Metal-assisted chemical etching of silicon: a review: in memory of Prof. Ulrich Gösele. *Advanced materials* 2011, 23, 285-308.
13. Li, X.; Bohn, P. W. Metal-assisted chemical etching in HF/H₂O₂ produces porous silicon. *Applied Physics Letters* 2000, 77, 2572-2574.
14. Faustini, M.; Drisko, G. L.; Boissiere, C.; Grosso, D. Liquid deposition approaches to self-assembled periodic nanomasks. *Scripta Materialia* 2014, 74, 13-18.
15. Cheung, H.-Y.; Lin, H.; Xiu, F.; Wang, F.; Yip, S.; Ho, J. C.; Wong, C.-Y. Mechanistic Characteristics of Metal-Assisted Chemical Etching in GaAs. *The Journal of Physical Chemistry C* 2014, 118, 6903-6908.
16. Kim, S. H.; Mohseni, P. K.; Song, Y.; Ishihara, T.; Li, X. Inverse metal-assisted chemical etching produces smooth high aspect ratio InP nanostructures. *Nano letters* 2015, 15, 641-648.
17. Lai, R. A.; Hymel, T. M.; Narasimhan, V. K.; Cui, Y. Schottky Barrier Catalysis Mechanism in Metal-Assisted Chemical Etching of Silicon. *ACS Applied Materials & Interfaces* 2016, 8, 8875-8879.
18. Sharstniou, A.; Niauzorau, S.; Ferreira, P. M.; Azeredo, B. P. Electrochemical nanoimprinting of silicon. *Proceedings of the National Academy of Sciences* 2019, 116, 10264-10269.
19. Azeredo, B. P.; Lin, Y.-W.; Avagyan, A.; Sivaguru, M.; Hsu, K.; Ferreira, P. Direct Imprinting of Porous Silicon via Metal-Assisted Chemical Etching. *Advanced Functional Materials* 2016, 26, 2929-2939.
20. Kim, J.; Lee, D. H.; Kim, J. H.; Choi, S.-H. Graphene-assisted chemical etching of silicon using anodic aluminum oxides as patterning templates. *ACS applied materials & interfaces* 2015, 7, 24242-24246.
21. Kubota, W.; Ishizuka, R.; Utsunomiya, T.; Ichii, T.; Sugimura, H. Chemical etching of silicon assisted by graphene oxide. *Japanese Journal of Applied Physics* 2019, 58, 050924.

22. Wilhelm, T. S.; Kecskes, I. L.; Baboli, M. A.; Abrand, A.; Pierce, M. S.; Landi, B. J.; Puchades, I.; Mohseni, P. K. Ordered Si Micropillar Arrays via Carbon-Nanotube-Assisted Chemical Etching for Applications Requiring Nonreflective Embedded Contacts. *ACS Applied Nano Materials* 2019, 2, 7819-7826.
23. Kim, J. D.; Kim, M.; Chan, C.; Draeger, N.; Coleman, J. J.; Li, X. CMOS-Compatible Catalyst for MacEtch: Titanium nitride-assisted chemical etching in vapor phase for high Aspect ratio Silicon nanostructures. *ACS applied materials & interfaces* 2019, 11, 27371-27377.
24. Suen, N.-T.; Hung, S.-F.; Quan, Q.; Zhang, N.; Xu, Y.-J.; Chen, H. M. Electrocatalysis for the oxygen evolution reaction: recent development and future perspectives. *Chemical Society Reviews* 2017, 46, 337-365.
25. Ardizzone, S.; Fregonara, G.; Trasatti, S. "Inner" and "outer" active surface of RuO₂ electrodes. *Electrochimica Acta* 1990, 35, 263-267.
26. Han, S. Y.; Lee, J.-L. Characteristics of Schottky contacts on n-type 4H-SiC using IrO₂ and RuO₂. *Journal of applied physics* 2003, 94, 6159-6166.
27. Kong, L.; Dasgupta, B.; Ren, Y.; Mohseni, P. K.; Hong, M.; Li, X.; Chim, W. K.; Chiam, S. Y. Evidences for redox reaction driven charge transfer and mass transport in metal-assisted chemical etching of silicon. *Scientific reports* 2016, 6, 1-13.
28. Pourbaix, M.; Staehle, R. W. Electrochemical equilibria. In *Lectures on electrochemical corrosion*, Springer: 1973; pp 83-183.
29. Faustini, M.; Giraud, M.; Jones, D.; Rozière, J.; Dupont, M.; Porter, T. R.; Nowak, S.; Bahri, M.; Ersen, O.; Sanchez, C.; Boissière, C.; Tard, C.; Peron, J. Hierarchically Structured Ultraporos Iridium-Based Materials: A Novel Catalyst Architecture for Proton Exchange Membrane Water Electrolyzers. *Advanced Energy Materials* 2019, 9, 1802136.
30. Peron, J.; Faustini, M.; Giraud, M.; Rozière, J.; Jones, D. J.; Boissière, C.; Tard, C. Hollow Iridium-Based Catalysts for the Oxygen Evolution Reaction in Proton Exchange Membrane Water Electrolyzers. *ECS Transactions* 2017, 80, 1077-1084.
31. Ortel, E.; Reier, T.; Strasser, P.; Kraehnert, R. Mesoporous IrO₂ Films Templated by PEO-PB-PEO Block-Copolymers: Self-Assembly, Crystallization Behavior, and Electrocatalytic Performance. *Chemistry of Materials* 2011, 23, 3201-3209.
32. Mattos-Costa, F. I.; de Lima-Neto, P.; Machado, S. A. S.; Avaca, L. A. Characterisation of surfaces modified by sol-gel derived RuIr_{1-x}O₂ coatings for oxygen evolution in acid medium. *Electrochimica Acta* 1998, 44, 1515-1523.
33. Sassoey, C.; Laberty, C.; Le Khanh, H.; Cassaignon, S.; Boissiere, C.; Antonietti, M.; Sanchez, C. Block-Copolymer-templated synthesis of electroactive RuO₂-based mesoporous thin films. *Advanced Functional Materials* 2009, 19, 1922-1929.
34. Bindini, E.; Naudin, G.; Faustini, M.; Grosso, D.; Boissière, C. Critical role of the atmosphere in dip-coating process. *The Journal of Physical Chemistry C* 2017, 121, 14572-14580.
35. Cattoni, A.; Ghenuche, P.; Haghiri-Gosnet, A.-M.; Decanini, D.; Chen, J.; Pelouard, J.-L.; Collin, S. p. λ /1000 Plasmonic Nanocavities for Biosensing Fabricated by Soft UV Nanoimprint Lithography. *Nano Letters* 2011, 11, 3557-3563.
36. Faustini, M.; Cattoni, A.; Peron, J.; Boissière, C.; Ebrard, P.; Malchère, A.; Steyer, P.; Grosso, D. Dynamic shaping of femtoliter dew droplets. *ACS nano* 2018, 12, 3243-3252.

37. Bottein, T.; Dalstein, O.; Putero, M.; Cattoni, A.; Faustini, M.; Abbarchi, M.; Grosso, D. Environment-controlled sol-gel soft-NIL processing for optimized titania, alumina, silica and yttria-zirconia imprinting at sub-micron dimensions. *Nanoscale* 2018, 10, 1420-1431.
38. Louis, B.; Krins, N.; Faustini, M.; Grosso, D. Understanding Crystallization of Anatase into Binary SiO₂/TiO₂ Sol-Gel Optical Thin Films: An in Situ Thermal Ellipsometry Analysis. *The Journal of Physical Chemistry C* 2011, 115, 3115-3122.
39. Chehadi, Z.; Boissière, C.; Chanéac, C.; Faustini, M. Nanoconfined water vapour as a probe to evaluate plasmonic heating. *Nanoscale* 2020, 12, 13368-13376.
40. Muniz, F. T. L.; Miranda, M. A. R.; Morilla dos Santos, C.; Sasaki, J. M. The Scherrer equation and the dynamical theory of X-ray diffraction. *Acta Crystallographica Section A: Foundations and Advances* 2016, 72, 385-390.
41. Morgan, D. J. Resolving ruthenium: XPS studies of common ruthenium materials. *Surface and Interface Analysis* 2015, 47, 1072-1079.
42. Li, R.; Faustini, M.; Boissière, C. d.; Grosso, D. Water capillary condensation effect on the photocatalytic activity of porous TiO₂ in air. *The Journal of Physical Chemistry C* 2014, 118, 17710-17716.
43. Li, R.; Boudot, M.; Boissière, C.; Grosso, D.; Faustini, M. Suppressing structural colors of photocatalytic optical coatings on glass: the critical role of SiO₂. *ACS Applied Materials & Interfaces* 2017, 9, 14093-14102.
44. Li, L.; Liu, Y.; Zhao, X.; Lin, Z.; Wong, C.-P. Uniform Vertical Trench Etching on Silicon with High Aspect Ratio by Metal-Assisted Chemical Etching Using Nanoporous Catalysts. *ACS Applied Materials & Interfaces* 2014, 6, 575-584.
45. Mallavarapu, A.; Ajay, P.; Sreenivasan, S. V. Enabling Ultrahigh-Aspect-Ratio Silicon Nanowires Using Precise Experiments for Detecting the Onset of Collapse. *Nano Letters* 2020, 20, 7896-7905.
46. Faustini, M.; Grosso, D. Self-assembled inorganic nanopatterns (INPs) made by sol-gel dip-coating: Applications in nanotechnology and nanofabrication. *Comptes Rendus Chimie* 2016, 19, 248-265.
47. Faustini, M.; Grenier, A.; Naudin, G.; Li, R.; Grosso, D. Ultraporous nanocrystalline TiO₂-based films: Synthesis, patterning and application as anti-reflective, self-cleaning, superhydrophilic coatings. *Nanoscale* 2015, 7, 19419-19425.
48. Chang, S. W.; Chuang, V. P.; Boles, S. T.; Ross, C. A.; Thompson, C. V. Densely packed arrays of ultra-high-aspect-ratio silicon nanowires fabricated using block-copolymer lithography and metal-assisted etching. *Advanced functional materials* 2009, 19, 2495-2500.

TOC graphic

Oxide
~~Meta~~ Assisted Chemical Etching

