



HAL
open science

Multimodal FDG-PET and EEG assessment improves diagnosis and prognostication of disorders of consciousness

Bertrand Hermann, Johan Stender, Marie-Odile Habert, Aurélie Kas, Mélanie Denis-Valente, Federico Raimondo, Pauline Pérez, Benjamin Rohaut, Jacobo Diego Sitt, Lionel Naccache

► **To cite this version:**

Bertrand Hermann, Johan Stender, Marie-Odile Habert, Aurélie Kas, Mélanie Denis-Valente, et al.. Multimodal FDG-PET and EEG assessment improves diagnosis and prognostication of disorders of consciousness. *Neuroimage-Clinical*, 2021, 30, pp.102601. 10.1016/j.nicl.2021.102601 . hal-03157892

HAL Id: hal-03157892

<https://hal.sorbonne-universite.fr/hal-03157892>

Submitted on 3 Mar 2021

HAL is a multi-disciplinary open access archive for the deposit and dissemination of scientific research documents, whether they are published or not. The documents may come from teaching and research institutions in France or abroad, or from public or private research centers.

L'archive ouverte pluridisciplinaire **HAL**, est destinée au dépôt et à la diffusion de documents scientifiques de niveau recherche, publiés ou non, émanant des établissements d'enseignement et de recherche français ou étrangers, des laboratoires publics ou privés.



Multimodal FDG-PET and EEG assessment improves diagnosis and prognostication of disorders of consciousness

Bertrand Hermann^{a,b,c,*}, Johan Stender^a, Marie-Odile Habert^{d,e,f}, Aurélie Kas^{d,e,f},
Mélanie Denis-Valente^{a,g}, Federico Raimondo^{a,h,i}, Pauline Pérez^a, Benjamin Rohaut^{a,d},
Jacobo Diego Sitt^a, Lionel Naccache^{a,d,g}

^a Institut du Cerveau et de la Moelle épinière – ICM, Inserm U1127, CNRS UMR 7225, F-75013 Paris, France

^b Faculté de Médecine, Université de Paris, Paris, France

^c Service de Médecine Intensive et Réanimation, Hôpital Européen Georges Pompidou, Assistance Publique des Hôpitaux de Paris (AP-HP), Paris, France

^d Faculté de Médecine Pitié-Salpêtrière, Sorbonne Universités, UPMC Université Paris 06, Paris, France

^e Laboratoire d'Imagerie Biomédicale, Sorbonne Université, UPMC Université Paris 06, CNRS, INSERM, F-75013 Paris, France

^f Service de Médecine Nucléaire, Groupe hospitalier Pitié-Salpêtrière, Assistance Publique des Hôpitaux de Paris (AP-HP), Paris, France

^g Service de Neurophysiologie, Groupe hospitalier Pitié-Salpêtrière, Assistance Publique des Hôpitaux de Paris (AP-HP), Paris, France

^h Coma Science Group, GIGA Consciousness, University of Liège, Belgium

ⁱ Centre du Cerveau², University Hospital of Liège, Belgium

ARTICLE INFO

Keywords:

Disorders of consciousness
Positron emission tomography
Electroencephalography
Diagnosis
Cognitive-motor dissociation

ABSTRACT

Introduction: Functional brain-imaging techniques have revealed that clinical examination of disorders of consciousness (DoC) can underestimate the conscious level of patients. FDG-PET metabolic index of the best preserved hemisphere (MIBH) has been reported as a promising measure of consciousness but has never been externally validated and compared with other brain-imaging diagnostic procedures such as quantitative EEG. **Methods:** FDG-PET, quantitative EEG and cognitive evoked potential using an auditory oddball paradigm were performed in minimally conscious state (MCS) and vegetative state (VS) patient. We compared out-sample diagnostic and prognostic performances of PET-MIBH and EEG-based classification of conscious state to the current behavioral gold-standard, the Coma Recovery Scale – revised (CRS-R). **Results:** Between January 2016 and October 2019, 52 patients were included: 21 VS and 31 MCS. PET-MIBH had an AUC of 0.821 [0.694–0.930], sensitivity of 79% [62–91] and specificity of 78% [56–93], not significantly different from EEG ($p = 0.628$). Their combination accurately identified almost all MCS patients with a sensitivity of 94% [79–99%] and specificity of 67% [43–85]. Multimodal assessment also identified VS patients with neural correlate of consciousness (4/7 (57%) vs. 1/14 (7%), $p = 0.025$) and patients with 6-month recovery of command-following (9/24 (38%) vs. 0/16 (0%), $p = 0.006$), outperforming each technique taken in isolation. **Conclusion:** FDG-PET MIBH is an accurate and robust procedure across sites to diagnose MCS. Its combination with EEG-based classification of conscious state not only optimizes diagnostic performances but also allows to detect covert cognition and to predict 6-month command-following recovery demonstrating the added value of multimodal assessment of DoC.

1. Introduction

Disorders of consciousness (DoC) are common consequences of severe brain injury. They comprise heterogeneous conditions, with patients either suffering from a complete loss of awareness, as in the vegetative state (also termed unresponsive wakefulness syndrome – VS/UWS) (Jennett and Plum, 1972; Laureys et al., 2010), or patients

exhibiting minimal but definite signs of external awareness, as in the minimally conscious state (MCS) (Giacino et al., 2002). The differential diagnosis is mainly based on behavioral assessments, among which the coma recovery scale – revised (CRS-R) is the current gold-standard (Kalmar and Giacino, 2005). However, recent advances indicate that behavioral evaluation alone may be inadequate, as residual signs of awareness can be identified using brain-imaging techniques in

* Corresponding author at: Brain and Spine Institute, 47 boulevard de l'hôpital, 75013 Paris, France.

E-mail address: bertrand.hermann@aphp.fr (B. Hermann).

<https://doi.org/10.1016/j.nicl.2021.102601>

Received 10 October 2020; Received in revised form 5 February 2021; Accepted 11 February 2021

Available online 23 February 2021

2213-1582/© 2021 Published by Elsevier Inc. This is an open access article under the CC BY-NC-ND license (<http://creativecommons.org/licenses/by-nc-nd/4.0/>).

~15–25% of clinically unresponsive patients (Cruse et al., 2011; King et al., 2013b; Owen et al., 2006). The presence of covert cognition furthermore appears to hold important prognostic significance (Sitt et al., 2014; Claassen et al., 2019). In light of these considerations, neuroimaging tools are essential both to complement the clinical diagnosis and to investigate the neurophysiological basis of the disorders (Hermann et al., 2020a). Among the available tools, ^{18}F -fluoro-deoxy-glucose positron emission tomography (FDG-PET) has consistently demonstrated a metabolic reduction to approximately 50% of brain glucose uptake across various unconscious conditions, from anesthesia, to sleep, to DoC. As such it has been proposed as a diagnostic tool for DoC patients (Stender et al., 2014, 2015). Yet, in the aforementioned studies, diagnostic labels relied on the subjective assessment of PET results and/or seed-based normalization procedures, prone to odd results in this specific population. In 2016, Stender et al., proposed a novel normalization procedure resulting in a simple measure of cerebral metabolic activity, which showed the best diagnostic performances to date (Stender et al., 2016). Alas, this measure, which requires on-site acquisition of healthy controls, has never been validated outside the initial center and its generalizability remains unknown. Other diagnostic tools, easier to implement at bedside, have been proposed. Electrophysiology allows reliable and robust automatic classification of conscious versus unconscious states based both on EEG brain activity (Engemann et al., 2018; Sitt et al., 2014) and event-related potentials (ERP) during cognitive tasks such as the auditory local–global paradigm (Bekinschtein et al., 2009a; Faugeras et al., 2011, 2012). As these techniques develop and become more readily available, it is increasingly necessary to understand the interrelation of the physiological data they provide. In this context, glucose metabolism as measured by FDG-PET has been previously associated with EEG-derived network metrics of interconnected central hubs (Chennu et al., 2017) and correlated with resting-state fMRI connectivity maps (Soddu et al., 2016). While such comparative studies remain rare, they are nonetheless critical to the wider implementation of multimodal neuroimaging techniques in routine care as recommended in the latest guidelines (Giacino et al., 2018).

We here aimed to determine the external validity of the FDG-PET metabolic index for DoC diagnosis, in comparison with EEG-based classification. We further explored whether a multimodal approach combining PET and EEG would add value to the diagnosis and prognostication of DoC.

2. Material and methods

2.1. Ethics statement

The protocol conformed to the Declaration of Helsinki, to the French regulations, and was approved by the local ethic committee (*Comité de Protection des Personnes n° 2013-A01385-40*) Ile de France 1 (Paris, France) under the code '*Recherche en soins courants*' (routine care research). Informed consent was obtained from patient's relative.

2.2. Population inclusion and exclusion criteria

We prospectively included patients with prolonged DoC, admitted to the Neurological Intensive Care Unit of the Pitié-Salpêtrière university hospital (Paris, France) between January 2016 and October 2019. All patients were transferred for specialized diagnosis, in order to determine their state of consciousness. The admission lasted approximately one week, during which they undergone repeated behavioral assessment, high-density EEG recording and FDG-PET. Only patients without mechanical ventilation could be scanned and were included. Patients who received sedation in the 48 h prior to acquisition were excluded. Previously acquired PET images from 32 healthy subjects without history of neurological disorders were used as controls.

2.3. Behavioral assessment

Behavioral evaluation relied on the gold-standard CRS-R (Giacino and Kalmar, 2005). This scale evaluates the patient's response to a set of hierarchically ordered items in six different domains: auditory, visual, motor, language and oromotor, communication and arousal. During the hospitalization, several CRS-R were performed by trained physicians in order to increase diagnostic accuracy. The reference standard was the highest detected level of consciousness, as defined by the best response obtained among all CRS-R scorings. We collected the 6-month outcome by phone interview of the treating physician and/or family. Since recovery of consciousness is expected to be rare in this short timeframe for chronic DoC, we focused on a more reasonable yet clinically relevant outcome, the recovery of command-following (defined as the reproducible response to command following CRS-R scoring guidelines) in initially unresponsive patients as in Claassen et al. (2019).

2.4. PET acquisition and image analysis

2.4.1. Acquisition

PET images were acquired on a Philips Gemini GXL scanner (Philips Medical Systems) in the nuclear medicine department. Patients and controls received a bolus injection of FDG adjusted to body weight (2 MBq/kg) and were kept at rest in a dark and quiet room. PET images were recorded starting from 20 min to 1 h after the circulation of the tracer using two different protocols: the first consisted in the static acquisition of a single 15 min frame, the second, used in restless patients in order to minimize motion artifacts, consisted in the acquisition of three consecutive frames of 5 min each. Images were then reconstructed using iterative LOR-RAMLA algorithm (2 iterations), with a « standard » post-reconstruction filter. All corrections (attenuation, scatter and random coincidence) were integrated in the reconstruction.

2.4.2. Quantitative normalization procedure

Quality of PET images was assessed by nuclear medicine physicians, blinded to the patients state of consciousness and PET data of insufficient quality were discarded. PET acquired more than one hour after the tracer injection were also discarded according to standard clinical practice. The uptake quantification procedure followed steps described by Stender et al. (2016). The image is hereby normalized to match uptake-histograms of extracerebral cephalic tissues, as opposed to common methods normalizing brain metabolism to a specific cerebral region (such as the cerebellum). First, images were registered to a common template in MNI space by affine and non-linear transformations. They were then segmented (left and right cerebral cortices and extracerebral tissue) and normalized on the metabolism of the extracerebral tissue in reference to controls (by minimization of the Jensen-Shannon divergence between patients and the control distribution). Finally, brain metabolic activity was scaled by setting the mean activity of extracerebral regions to an index value of one. Metabolic index of the best preserved hemisphere (MIBH) was computed as the highest mean metabolic activity of the two hemispheres. For the dynamic acquisition, the quantification procedure was performed on each one of the three frames and the resulting normalized images were then averaged.

2.5. EEG acquisition and analysis

2.5.1. Acquisition and preprocessing

High-density (256 electrodes) scalp EEG were recorded at bedside the during local–global auditory oddball paradigm. This paradigm probes the unconscious and conscious processing of auditory novelty through the manipulation of two temporal levels of auditory regularities violation, respectively on a short-time scale (local, within a series of five sound, the last one being either a standard or a deviant tone according to the four preceding sounds) or on a long-time scale (global, across series

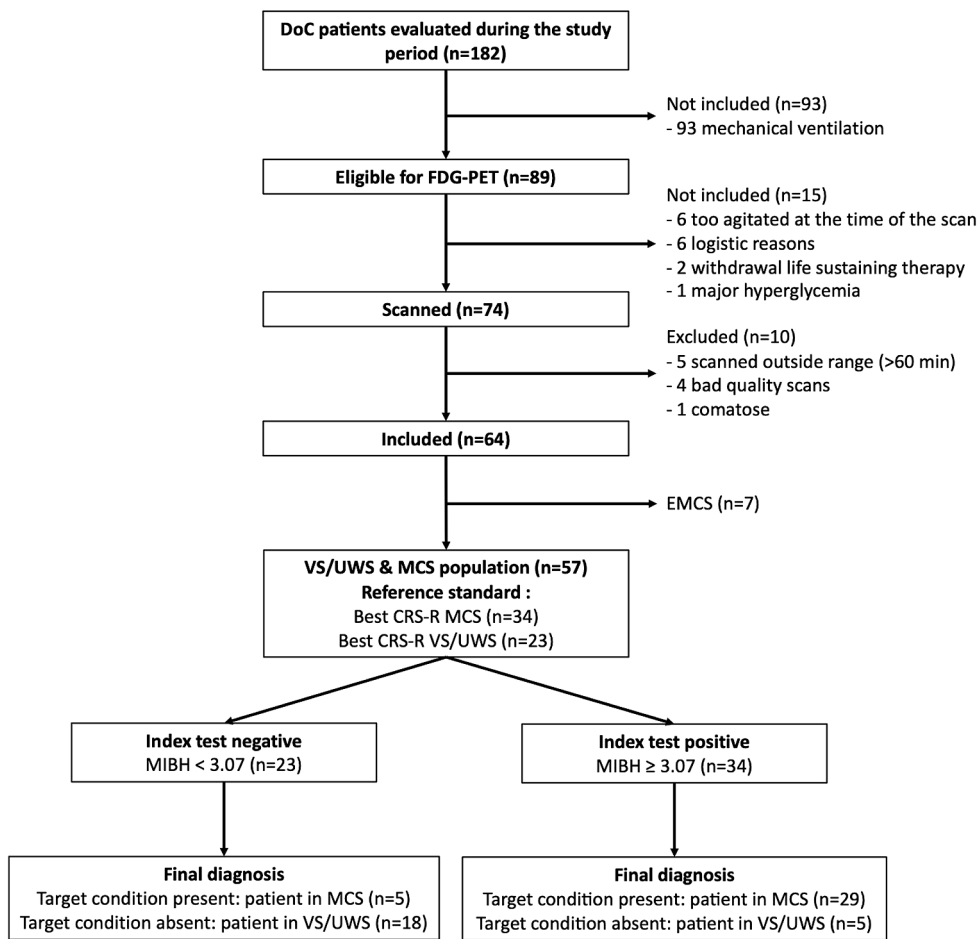


Fig. 1. Flow chart. CRS-R: coma recovery scale – revised; EMCS: emergence from minimally conscious state; FDG-PET: ^{18}F -fluoro-deoxyglucose positron emission tomography; MCS: minimally conscious state; MIBH: metabolic index of the best preserved hemisphere; VS/UWS: vegetative state/unresponsive wakefulness syndrome. In order to diagnose MCS (target condition), the new diagnostic procedure, the FDG-PET MIBH (index test), was compared to the best state of consciousness observed across the repeated CRS-R (reference standard).

of five sounds) (see [Supplementary Material 1a](#)). The latter is able to elicit the P3b signature of conscious auditory processing ([Bekinschtein et al., 2009a](#); [King et al., 2013a](#)). EEG were preprocessed using a previously described pipeline (epochs segmentation, automated rejection of artifacted epochs and channels based on amplitude and variance of the signal, bad channels interpolation, discarding of EEG of insufficient quality based on a priori specified criteria and lastly, baseline correction) ([Engemann et al., 2018, 2015](#)) (see [Supplementary Material 1b](#)).

2.5.2. EEG-based automatic classification of conscious states

112 features reflecting averages and fluctuations in time and space of 28 markers of spectral power (normalized and raw δ [1–4 Hz], θ [4–8 Hz], α [8–12 Hz], β [12–30 Hz], and γ [30–45 Hz] power, spectral entropy, median spectral frequency, spectral edge 90th and 95th), connectivity (weighted symbolic mutual information in the theta-alpha range [4–10 Hz] ([King et al., 2013b](#)), complexity (Kolmogorov-Chaitin complexity and permutation entropy) and evoked responses (contingent negative variation, P1, P3a, P3b and contrasts from the local-global oddball paradigm including mismatch negativity) were computed from the EEG signal and subsequently used to predict the patients state of consciousness using a linear support vector machine (SVM) algorithm as previously described ([Sitt et al., 2014](#); [Engemann et al., 2018](#)) (see [Supplementary Material 1c](#) for details regarding the markers computation and the SVM algorithm).

2.5.3. Auditory oddball local and global effect

Evoked responses to the local and global contrasts were computed using t-tests for unequal variance over the whole time-series. To determine the presence of a local and/or global effect in individual subjects,

we used the previously published stringent triple-threshold criteria ([Faugeras et al., 2012](#)). An effect was considered present, if a significant difference ($p\text{-value} \leq 0.01$) was observed on at least 5 consecutive time samples and 10 adjacent electrodes starting from the onset of the fifth sound and if this difference was stronger than any differences observed during the baseline period (either lower minimal $p\text{-value}$ or if equal, longer duration). Accordingly, three groups of patients were identified: absent local and global effect, local effect only and global effect (regardless of the presence of a local effect, as the global effect indexes a higher level in the auditory novelty processing hierarchy).

2.6. Statistical analysis

We assessed in-sample and out-of-sample diagnostic performances of two index tests, the FDG-PET MIBH and the EEG-based prediction of conscious state, using the standard following discrimination metrics with their 10,000 bootstrapped 95% confidence interval (CI95%): area under the ROC curves (AUC), sensitivity, specificity, positive and negative predictive values, positive and negative likelihood ratios, and accuracy. For the FDG-PET, in-sample performances were derived from the optimal MIBH threshold according to the ROC curve, while out-of-sample performances were derived from the use of the 3.18 MIBH threshold value set by [Stender et al.](#) based on data from Liège University Hospital ([Stender et al., 2016](#)). For in-sample EEG performances, the SVM algorithm was trained and tested on the same patients, namely the cohort of patients included in the study. Out-of-sample performances were obtained by training the SVM classifier on a previously published dataset ([Engemann et al., 2018](#)) from which we excluded the patients included in the study to avoid overfitting, yielding a total of 341

Table 1
FDG-PET Population characteristics.

Variable	All N = 57	VS/UWS N = 23	MCS N = 34	p
<i>Demographic characteristics</i>				
Age, years, median [IQR]	45.6 [28.9–56.2]	47.2 [28.8–56.2]	45.2 [31.3–55.9]	0.715
Sex, M/F ratio	1.6	1.9	1.4	0.834
Etiology, n(%)				<10 ⁻³
-Anoxia	21 (37%)	15 (65%)	6 (17%)	
-Traumatic	18 (32%)	6 (26%)	12 (35%)	
-Vascular	8 (14%)	0 (0%)	8 (24%)	
-Other*	10 (17%)	2 (9%)	8 (24%)	
Time since injury, days	209 [103–77]	194 [105–500]	340 [104–940]	0.317
<i>Behavior</i>				
Nb of CRS-R	3 [2–4]	3 [2–4]	3 [2–4]	0.653
CRS-R total score	9 [6–12]	6 [5–7]	11 [9–13]	<10 ⁻³
CRS-R arousal score	2 [1–2]	2 [1–2]	2 [1–2]	0.679
<i>FDG-PET acquisition</i>				
Delay from best CRS-R	-1 [-1–1]	0 [-1–1]	-1 [-1–1]	0.973
Weight, kg	64 [55–77]	70 [53–78]	60 [55–76]	0.474
Blood glucose, mmol/L	5.4 [4.8–6.1]	5.9 [5.2–6.6]	5.3 [4.8–5.8]	0.019
Tracer dose, MBq	134 [122–159]	140 [126–159]	133 [121–155]	0.366
Protocol				0.663
-Static	45 (79%)	17 (74%)	28 (82%)	
-Dynamic	12 (21%)	6 (26%)	6 (18%)	
Injection delay, minutes	37.0 [32.0–42.4]	37.5 [31.5–48.2]	37.0 [32.3–42.0]	0.929
<i>EEG</i>				
Delay from best CRS-R	0 [0–0]	0 [0–0]	0 [-2.5–0]	0.904
<i>Acquisition</i>				
-Recorded	57 (100%)	23 (100%)	34 (100%)	1.0
-Analyzeable	52 (91%)	21 (91%)	31 (91%)	1.0
<i>Preprocessing</i>				
-Nb of rejected channels	15 [11.75–23.5]	15 [13–23]	16 [11.5–23]	0.588
-Nb of rejected epochs	109 [31–216.75]	105 [14–228]	129 [37.5–203]	0.569
<i>Local-global</i>				
paradigm (n = 52)	16 (31%)	5 (24%)	11 (26%)	0.402
-Global effect	15 (29%)	5 (24%)	10 (32%)	
-Local effect	21 (40%)	11 (52%)	10 (32%)	
-No effect				

CRS-R: coma recovery scale – revised; EEG: electroencephalogram; MCS: minimally conscious state; Nb: number; VS/UWS: vegetative state/unresponsive wakefulness syndrome.

Quantitative data are expressed as median [interquartile range] and compared Mann-Whitney-U test. Categorical data are expressed as number (percentage) and compared through chi-squared test (except when in which case Fisher's exact test was used).

* Other etiologies are: hypoglycemia (n = 2), status epilepticus (n = 2), neurologic sequelae of craniopharyngioma surgery (n = 1), tuberculosis meningitis (n = 1), opioid toxic encephalopathy (n = 1), cerebral fat embolism syndrome (n = 1), acute demyelinating encephalomyelitis (n = 1) and leucoencephalopathy of unknown origin (n = 1).

recordings (VS/UWS n = 170, MCS n = 171 acquired from 267 independent subjects). Predicted probability of MCS classification (as opposed to VS/UWS) was obtained from the SVM output through Platt scaling. Since this output is probabilistic, discrimination metrics were computed for a 0.5 threshold in both conditions. ROC curves comparisons were tested using 10,000 bootstrapped replicates. Sensitivities and specificities were compared using McNemar test for paired design. Quantitative data were expressed as median [interquartile range] and compared through Mann-Whitney-U and categorical data were expressed as number (percentage) and compared through chi-squared

test or Fisher's exact test as appropriate. Correlation between the MIBH and the CRS-R was performed using spearman correlation coefficient.

3. Data and software availability

Ethic committee does not allow the open sharing of raw human patients data (notably of brain-imaging data). However, post-processed anonymized metadata are provided in [supplementary material](#). The list of software used can be found in [Supplementary material 1d](#).

4. Results

4.1. Population

Among the 182 DoC patients evaluated during the study period, 89 were eligible for PET, 74 were scanned and 57 were included in the analysis: 23 in VS/UWS and 34 in MCS ([Fig. 1](#)). Additionally, 7 FDG-PET recordings of patients in EMCS were available. Diagnostic performance measures of the FDG-PET and EEG were restricted to the VS/UWS and MCS population. Importantly, no significant differences were found between VS/UWS and MCS patients in terms of number of CRS-R performed, CRS-R arousal score, delay between PET and best CRS-R, and PET acquisition parameters (acquisition protocol, tracer dose and time from tracer injection, concomitant drugs), except for the blood glucose concentration which remained within normal range (5.9 [5.2–6.6] in VS/UWS patients vs. 5.3 [4.8–5.8] in MCS patients, p = 0.019, [Table 1](#) and [Supplementary material 2a, b & c](#)).

4.2. Validation of the FDG-PET metabolic index as a reliable diagnostic tool

We first evaluated the in-sample FDG-PET performances of the MIBH to diagnose MCS, as compared to the reference gold-standard, i.e. the best state of consciousness observed over CRS-R measurement(s). VS/UWS patients had a significantly lower MIBH than MCS patients (median MIBH of 2.70 [2.40–3.03] vs. 3.65 [3.26–4.04], p < 10⁻⁴), with an AUC of 0.821 [0.694–0.930]).

At the optimal MIBH cut-off of 3.07, corresponding to 54% of the healthy controls metabolism (5.73 [5.20–6.39]), accuracy was 84% [71–92], positive predictive value was 85% [69–95], negative predictive value was 78% [56–93], sensitivity was 85% [69–95] and specificity was 78% [56–93]. Similar discrimination performances were found when adjusting for blood glucose levels and scanning protocol (see [Supplementary Material 2d](#)). Using the previously published diagnostic threshold of 3.18 for external validation still resulted in good discrimination performances with an accuracy of 79% [66–89], positive predictive value of 84% [67–95], negative predictive value of 72% [51–88], sensitivity of 79% [62–91] and specificity 78% [56–93]. As expected, all EMCS patients had a score above threshold (4.39 [3.71–5.16]) and interestingly, all MCS patients with a score below threshold were MCS *minus* patients (MCS-), that is MCS patients without clinical evidence of language preservation, contrary to MCS *plus* patients (MCS+) ([Fig. 2A](#)). MIBH also correlated strongly with the CRS-R score (spearman ρ = 0.59, p < 10⁻⁴, [Fig. 2B](#)). These reliable performances validate the FDG-PET as a robust method to diagnose MCS across centers.

4.3. FDG-PET outperforms EEG-based classification

In order to evaluate the added value of the FDG-PET, we compared its diagnostic performances to a validated and robust EEG-based classification tool ([Sitt et al., 2014](#)) which demonstrated its ability to generalize to different settings: centers, paradigms, number of EEG channels and length of recordings ([Engemann et al., 2018](#)). Among the 57 EEG recordings, 5 did not pass the automated preprocessing and

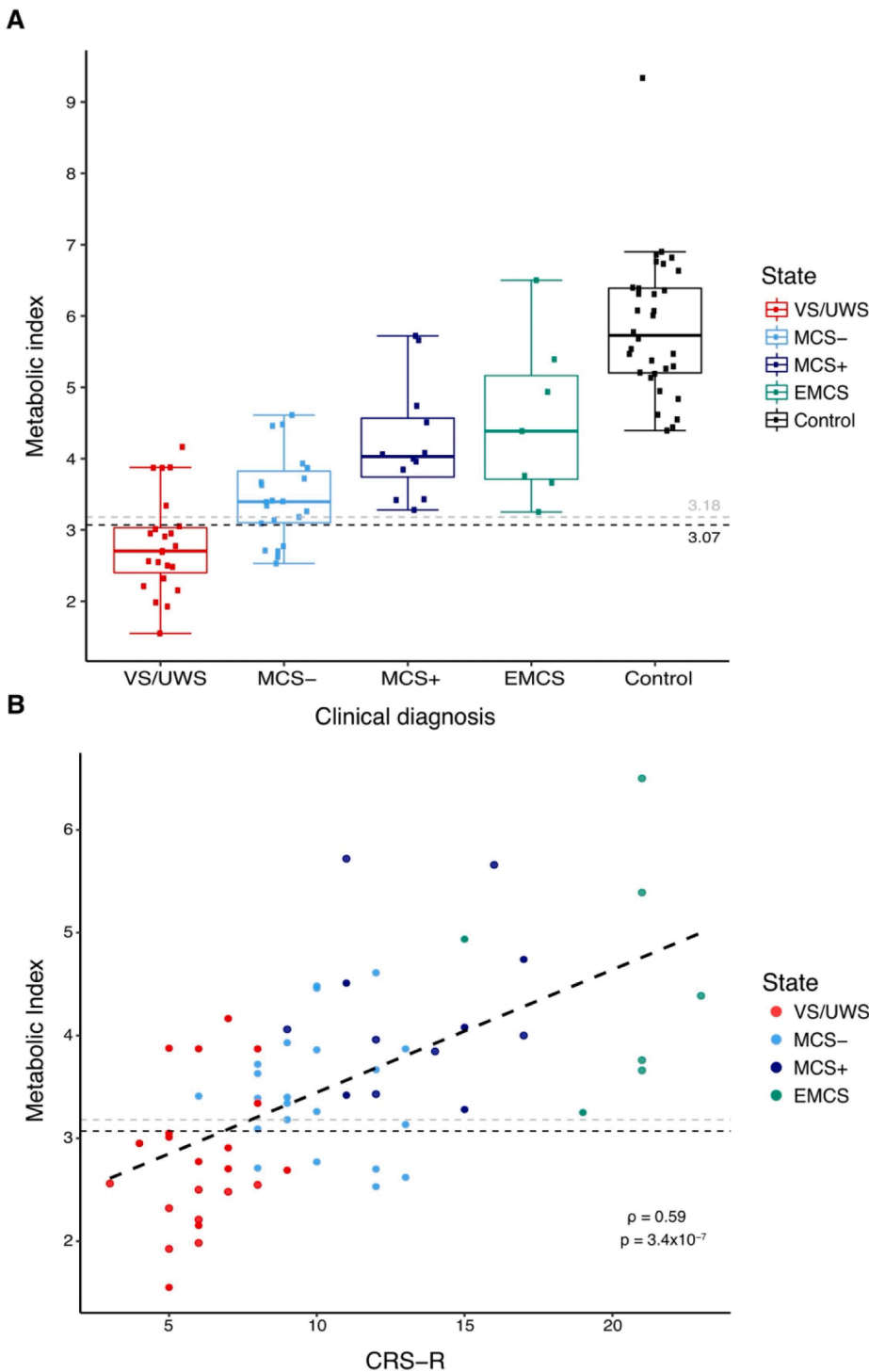


Fig. 2. FDG-PET metabolic index and consciousness. (A) Higher metabolic index of the best preserved hemisphere values are observed with increasing state of consciousness, from vegetative state/unresponsive wakefulness syndrome (VS/UWS), minimally conscious state minus (MCS-), minimally conscious state plus (MCS+) to emergence from minimally conscious state (EMCS) patients (control patients used for the normalization are in black). Dashed lines optimal in-sample (black) and out-of-sample (gray) thresholds for VS/UWS discrimination. (B) Significant correlation of the metabolic index with the Coma Recovery Scale – revised (CRS-R) scores, Spearman’s $\rho = 0.59$, $p < 10^{-4}$.

quality control pipeline, leaving a population of 52 patients (21 VS/UWS and 31 MCS) in which we compared FDG-PET and EEG performances (Table 2 and Fig. 3).

In-sample FDG-PET performances in this population were similar to the one of the whole PET population and EEG and FDG-PET performances were not significantly different ($p = 0.218$). EEG out-of-sample discrimination performances were: AUC of 0.770 [0.619–0.896], accuracy of 67% [53–80], sensitivity of 58% [39–75] and specificity of 81% [58–95]. While AUC were not significantly different ($p = 0.628$), the FDG-PET had a higher sensitivity than EEG (paired McNemar test $p = 0.033$) with no difference in specificity ($p = 0.655$).

4.4. A multimodal approach identifies covert consciousness and improves prognostication

Ideally, a perfect brain-imaging diagnostic tool for DoC patients should first identify all clinically MCS patients. We thus tested if multimodal brain-imaging combining FDG-PET and EEG (MIBH higher than Liège threshold for MCS and/or EEG-based predicted probability of MCS > 0.5) could outperform any of the two imaging modality taken in isolation. The combination of the PET MIBH with the EEG-based classification indeed accurately identified almost all MCS patients, yielding an improved sensitivity of 94% [79–99%] with a specificity of 67%

Table 2
Diagnostic performances of PET-FDG and EEG.

IN-SAMPLE PERFORMANCES												
Imaging Metrics	FDG-PET				EEG				FDG-PET EEG			
Contingency table	MCS	VS	All		MCS	VS	All		MCS	VS	All	
	+	27	5	32	+	29	6	35	+	31	8	39
	-	4	16	20	-	2	15	17	-	0	13	13
	All	31	19	52	All	31	21	52	All	31	21	52
AUC	0.816 [0.681–0.928]				0.912 [0.807–0.986]				0.810 [0.714–0.905]			
Accuracy	83 [70–92]				85 [72–93]				85 [72–93]			
Sensitivity	87 [70–96]				94 [79–99]				100 [89–100]			
Specificity	76 [53–92]				71 [48–89]				62 [38–82]			
Positive PV	84 [67–95]				83 [66–93]				79 [64–91]			
Negative PV	80 [56–94]				88 [64–99]				100 [75–100]			
Positive LR	3.66 [1.68–7.96]				3.27 [1.65–6.48]				2.62 [1.52–4.53]			
Negative LR	0.17 [0.07–0.44]				0.09 [0.02–0.35]				0.00 [0.00–Inf]			
OUT-OF-SAMPLE PERFORMANCES												
Imaging Metrics	FDG-PET				EEG				FDG-PET EEG			
Contingency table	MCS	VS	All		MCS	VS	All		MCS	VS	All	
	+	26	5	31	+	18	4	22	+	29	7	36
	-	5	16	21	-	13	17	30	-	2	14	16
	All	31	21	52	All	31	21	52	All	31	21	52
AUC	0.816 [0.681–0.928]				0.770 [0.619–0.896]				0.801 [0.689–0.905]			
Accuracy	82 [69–91]				67 [53–80]				83 [70–92]			
Sensitivity	84 [66–95]				58 [39–75]				94 [79–99]			
Specificity	76 [53–92]				81 [58–95]				67 [43–85]			
Positive PV	84 [66–95]				82 [60–95]				81 [62–99]			
Negative PV	76 [53–92]				57 [37–75]				88 [62–98]			
Positive LR	3.52 [1.61–7.69]				3.05 [1.20–7.73]				2.81 [1.52–5.17]			
Negative LR	0.21 [0.09–0.49]				0.52 [0.33–0.82]				0.10 [0.02–0.38]			

EEG: electroencephalogram; LR: likelihood ratio; MCS: minimally conscious state; PV: predictive value; VS: vegetative state/unresponsive wakefulness syndrome state; |: and/or; +: test positive; -: test negative.

Values are expressed with their 95% confidence interval.

[43–85], a positive predictive value of 81% [62–99] and negative predictive value of 88% [62–98]. Sensitivity of the combination was significantly higher than the one of EEG alone (paired McNemar test $p < 0.001$) and there was a trend towards a higher sensitivity than the one of FDG-PET alone ($p = 0.083$). But more importantly, since residual activity in higher-order cortical areas (higher-order cortex motor dissociation [HMD]) and even preserved brain activation in response to motor commands during active tasks despite absent behavioral response (cognitive-motor dissociation [CMD]) have been demonstrated in some clinically unresponsive patients using brain-imaging (Owen et al., 2006; Cruse et al., 2011; Claassen et al., 2019; Schiff, 2015; Edlow, 2018), the CRS-R may not be an adequate gold-standard to measure the ability of a new diagnostic tool to detect residual signs of cognition. We thus investigated the potential added value of the combination of FDG-PET and EEG in unresponsive patients using two measures independent from the CRS-R and relevant to the diagnosis of consciousness: an ERP correlate of conscious auditory perception and 6-month outcome. Seven out of the 21 (33%) clinically VS/UWS patients exhibited a higher metabolism and/or richer brain electrophysiological activity than expected. Interestingly 4 of these (57%) also exhibited an ERP global effect that indicates preserved conscious processing of auditory novelty (Bekinschtein et al., 2009a; Faugeras et al., 2011; King et al., 2013a). This was in contrast to the very low proportion of patients classified as VS/UWS by both behavior and neuro-imaging techniques and showing a global effect (1/14 (7%), fisher exact test $p = 0.025$). Moreover, the combination of PET and EEG was significantly associated with 6-month recovery of command-following in initially unresponsive patients (recovery in 9/24 (38%) of patients with high FDG-PET metabolism and/or rich EEG activity vs. in 0/16 (0%) of patients with low-level FDG-PET metabolism and EEG activity, fisher exact test $p = 0.006$), while either FDG-PET or EEG alone were not significantly associated with 6-month command-following (7/19 (37%) vs. 2/21 (10%), fisher exact test $p = 0.060$ for FDG-PET and 5/13 (38%) vs. 4/27 (15%), $p = 0.120$ for EEG). These results strongly suggest that the combination of FDG-PET

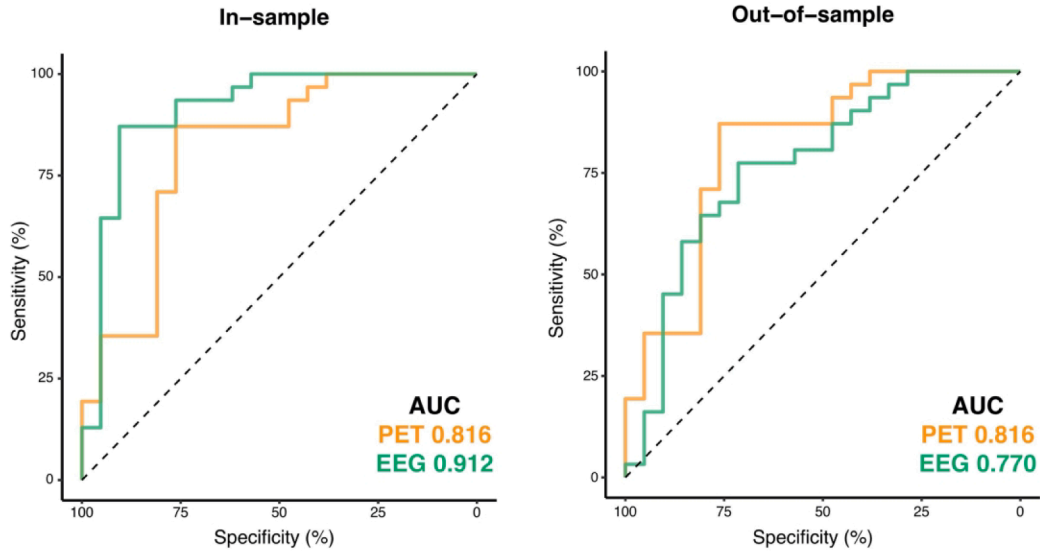
and EEG accurately identified residual signs of high cognitive function fostering the recovery of command-following in otherwise clinically unresponsive patients.

5. Discussion

In this study, we showed that external implementation and generalization of the MIBH quantification procedure of FDG-PET glucose uptake was practically feasible, and enabled accurate diagnosis of prolonged DoC. In our cohort, we found that the approximate metabolic boundary between MCS and VS/UWS was 50% of normal metabolism, slightly higher than previously found by Stender et al. (2016). While this difference could be due to site and/or protocol specific factors, our results align well with previous findings in DoC patients, sleep and anesthesia (Braun et al., 1997; Maquet et al., 1997; Nofzinger et al., 2002; Laureys et al., 2004; Shulman et al., 2009; Laureys and Schiff, 2012). More generally, these differences could be due to the natural variability of brain metabolism even among normal healthy subjects. All in all, our results confirm that quantitative FDG-PET using the MIBH quantification procedure is easy to apply, accurate and robust across sites to diagnose the state of consciousness in this severely brain-injured population.

We also showed that FDG-PET performed slightly better than EEG to diagnose DoC, with a difference in performance seemingly driven by a greater number of EEG-based false-negatives (i.e. clinically MCS patients estimated by the EEG classification to be unconscious). This phenomenon may be explained by common fluctuations of awareness among DoC (Bekinschtein et al., 2009b). While FDG-PET integrates brain activity across tens of minutes and could therefore be less susceptible to these fast and transient changes, EEG records brain activity in the millisecond range and is likely more affected. Yet, EEG availability and robust performances (Engemann et al., 2018) still make it a great candidate to bedside diagnostic assessment of patients, at least as a first-line/screening diagnostic procedure. Indeed, FDG-PET logistic

A. PET & EEG ROC curves



B. PET metabolic index & EEG multivariate probability

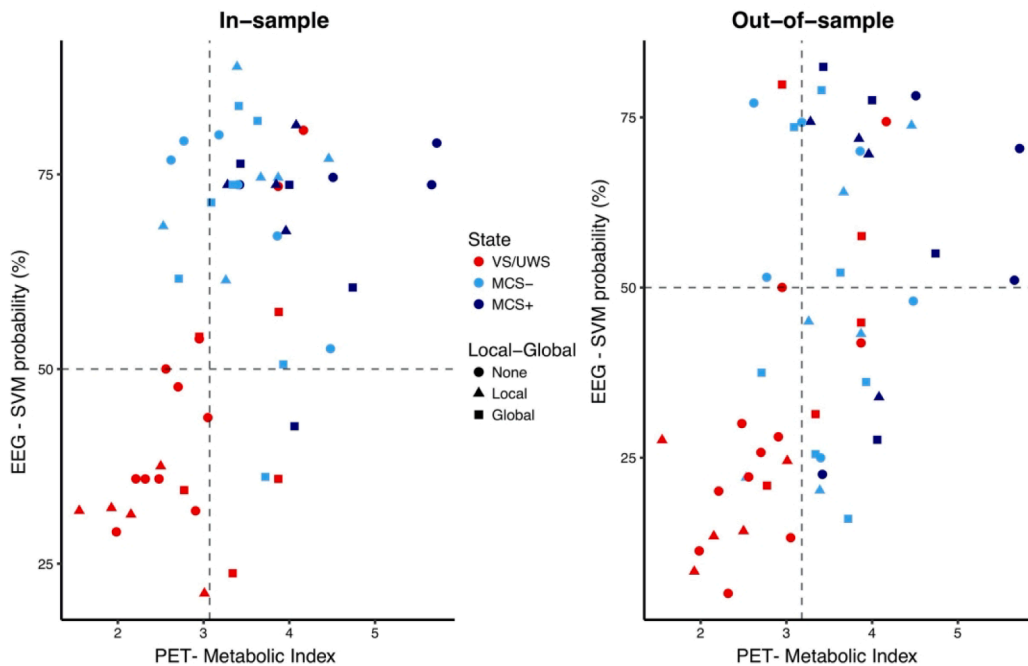


Fig. 3. FDG-PET and EEG performances. ROC curves of in-sample (left) and out-of-sample (right) diagnostic performances of FDG-PET (yellow) and EEG-based classification (green) with corresponding discrimination area under the curve (AUC). Similar in-sample AUC were found for FDG-PET and EEG (0.816 vs. 0.912, $p = 0.218$) while FDG-PET slightly outperformed EEG, however not significantly, on out-sample performances (0.816 vs. 0.770, $p = 0.628$). (B) Scatterplot representation of the support vector machine (SVM) classifier probability to be classified MCS according to the FDG-PET metabolic index of the best preserved hemisphere (MIBH) and the absence (circle) or presence of unconscious (local effect, triangle) or conscious (global effect, square) auditory processing of auditory novelty during the 'local-global' paradigm. Dashed gray lines represent thresholds for minimally conscious state (MCS) vs. vegetative state/unresponsive wakefulness syndrome (VS/UWS) discrimination. (For interpretation of the references to colour in this figure legend, the reader is referred to the web version of this article.)

requirements exceed those of bedside EEG, and it should be noted that even in our expert center, PET-scanning of mechanically ventilated patients was not possible. Besides, whereas FDG-PET provides information on the localization and amount of neuronal firing, it does not inherently provide insights into the underlying information processing. In contrast, EEG explores the qualitative features of the information exchange, but has limited anatomical resolution and the signal is difficult to quantify. Thus EEG and FDG-PET theoretically capture partially overlapping, yet independent, features of the DoC pathophysiology, which could complement each other. Although the good diagnostic agreement between

the two modalities fulfills the need of concision between brain-imaging procedures to address the diagnostic challenge of HMD and CMD (Peterson, 2016), the combination of both techniques clearly improves both the diagnosis and prognostication of DoC. Indeed, this combination satisfies the criterion of maximization of MCS diagnosis sensitivity, but most importantly, it allows to identify covert cognition in otherwise unresponsive patients. Although, our study does not provide definite answers as to the cognitive status of the seven clinically VS/UWS patients, who were classified as MCS using both PET and EEG, it is notable that their proportion corresponds to previous reports on the

prevalence of covert cognition after severe brain injury (Kondziella et al., 2016). Besides, more than half of these patients with absent behavioral responsiveness but rich PET/EEG activity showed an ERP neural signature of conscious access in the local-global paradigm. In contrast, only 1 of the 14 behaviorally VS/UWS patients confirmed by PET/EEG showed this global effect signature (Bekinschtein et al., 2009a; Faugeras et al., 2011, 2012; Raimondo et al., 2017), suggesting a covert cognitive state richer than the one inferred from their behavior in the former (Schiff, 2015; Edlow et al., 2017). This is further supported by the higher recovery of command-following at 6 months observed in initially unresponsive patients with rich PET and/or EEG activity. This finding is in line with previous studies showing that both FDG-PET (Stender et al., 2014, 2016) and EEG-based classification (Sitt et al., 2014; Claassen et al., 2019; Chennu et al., 2017) convey meaningful prognostic information. Here, again, we show that the combination of PET and EEG outperforms both modalities in isolation. Overall, our results provide evidence in favor of the multimodal assessment of DoC, as previously proposed theoretically (Bayne et al., 2017; Naccache, 2018) and recommended although with little evidence so far (Giacino et al., 2018). Such assessment should combine different clinical and brain-imaging techniques to investigate the degree of preservation of neuronal architecture involved in conscious processing and consciousness recovery.

Our study still have some limitations that should be underlined. First and foremost, clinical misdiagnosis cannot be excluded in a few VS/UWS patients due to the limited number of CRS-R performed. Indeed, according to the recent monocentric report from Wannez et al. (2017), several CRS-R (at least 3 and optimally 5) are requested to capture the patient's best conscious state due to frequent fluctuations in arousal and consciousness in this population. Although there was no statistical difference in the number of CRS-R performed between VS/UWS and MCS patients, we may have underestimated the conscious state of some VS/UWS as one VS/UWS patient had only one CRS-R and 6 had two CRS-R (individual data with the number of CRS-R performed are provided in [supplementary material](#)). However, all of these VS/UWS patients had congruent brain-imaging data (below threshold PET MIBH and VS/UWS EEG classification) and outcome (all were still alive and unresponsive at 6 months), making a clinical misclassification very unlikely. Second, EEG, FDG-PET and the best CRS-R were not always performed on the same day, although the delay was short and did not differ between VS/UWS and MCS. Although we externally validated both the FDG-PET and EEG, their limited availability still limit their use in DoC diagnosis. It should also be noted that the local-global auditory oddball paradigm is a passive paradigm, by contrast to active 'command-following' paradigm usually used to diagnose CMD. In the latter, patients are instructed to perform a task and subsequent changes in cerebral activity provide stimulus-independent activations whose interpretations regarding the intentionality and residual awareness of patients is less ambiguous than in passive paradigm. The latter allow to detect activation in higher-order associative cortices in response to environmental stimuli, corresponding to what has been called HMD, which may or may not be associated with the presence of the ability to follow command. Nonetheless, there are several reasons to believe that a global effect is indicative of conscious processing, since i) during the local-global paradigm, the patient is instructed to actively count the number of deviant sound sequences, ii) the presence of a global effect is thought to reflect the recognition of the violation of auditory regularities over a long-time scale which requires the active maintenance of the rule in working memory, a property associated with conscious perception, and iii) the global effect correspond to a late and sustained P3b component, which was repeatedly associated with conscious access in healthy subjects as well as in patients (Bekinschtein et al., 2009a; Faugeras et al., 2011; Hermann et al., 2020b; Pérez et al., 2021).

6. Conclusion

FDG-PET MIBH is an accurate and robust procedure across sites to diagnose MCS. Its combination with EEG-based classification of conscious state not only optimizes diagnostic performances but also allows to detect residual cortical activation suggestive of remaining conscious processing and to predict 6-month command-following recovery. Overall, we show that a multimodal approach combining FDG-PET and EEG provide complementary information on DoC pathophysiology improving both their diagnosis and prognostication.

CRedit authorship contribution statement

Bertrand Hermann: Conceptualization, Funding acquisition, Methodology, Investigation, Formal analysis, Writing - original draft; **Johan Stender:** Conceptualization, Methodology, Investigation, Formal analysis, Writing - original draft; **Marie-Odile Habert:** Conceptualization, Investigation, Writing - review & editing; **Aurélié Kas:** Investigation, Writing - review & editing; **Mélanie Denis-Valente:** Investigation, Data curation; **Federico Raimondo:** Data curation, Formal analysis; **Pauline Pérez:** Investigation; **Benjamin Rohaut:** Investigation, Writing - review & editing; **Jacobo Diego Sitt:** Conceptualization, Methodology, Writing - review & editing; **Lionel Naccache:** Conceptualization, Funding acquisition, Methodology, Writing - original draft, Supervision.

Funding

BH was funded by a "Bourse poste d'Accueil" from "Institut National de la Recherche Médicale". This work was also supported by the FRM 2015 (LN), the Académie des Sciences-Lamonic Prize 2016 (LN) and by the 'Recovery of consciousness after severe brain injury Phase II' grant of the James S. McDonnell Foundation. The research leading to these results has received funding from the program "Investissements d'avenir" ANR-10- IAIHU-06.

Appendix A. Supplementary data

Supplementary data to this article can be found online at <https://doi.org/10.1016/j.nicl.2021.102601>.

References

- Jennett, B., Plum, F., 1972. Persistent vegetative state after brain damage. A syndrome in search of a name. *Lancet* 299 (7753), 734–737. [https://doi.org/10.1016/S0140-6736\(72\)90242-5](https://doi.org/10.1016/S0140-6736(72)90242-5).
- Laureys, S., Celesia, G.G., Cohadon, F., Lavrijsen, J., León-Carrión, J., Sannita, W.G., Szabon, L., Schmutzhard, E., von Wild, K.R., Zeman, A., Dolce, G., 2010. Unresponsive wakefulness syndrome: a new name for the vegetative state or apallic syndrome. *BMC Med.* 8 (1) <https://doi.org/10.1186/1741-7015-8-68>.
- Giacino, J.T., Ashwal, S., Childs, N., Cranford, R., Jennett, B., Katz, D.I., Kelly, J.P., Rosenber, J.H., Whyte, J., Zafonte, R.D., Zasler, N.D., 2002. The minimally conscious state definition and diagnostic criteria. *Neurology* 58 (3), 349–353.
- Kalmar, K., Giacino, J., 2005. The JFK coma recovery scale-revised. *Neuropsychol Rehabil* 15 (3–4), 454–460. <https://doi.org/10.1080/09602010443000425>.
- Owen, A.M., Coleman, M.R., Boly, M., Davis, M.H., Laureys, S., Pickard, J.D., 2006. Detecting awareness in the vegetative state. *Science* 313 (5792), 1402. <https://doi.org/10.1126/science.1130197>.
- Cruse, D., Chennu, S., Chatelle, C., Bekinschtein, T.A., Fernández-Espejo, D., Pickard, J. D., Laureys, S., Owen, A.M., 2011. Bedside detection of awareness in the vegetative state: a cohort study. *Lancet* 378 (9809), 2088–2094.
- King, J.R., Faugeras, F., Gramfort, A., Schurger, A., El Karoui, I., Sitt, J.D., Rohaut, B., Wacongne, C., Labyt, E., Bekinschtein, T., Cohen, L., Naccache, L., Dehaene, S., 2013a. Single-trial decoding of auditory novelty responses facilitates the detection of residual consciousness. *NeuroImage* 83, 726–738. <https://doi.org/10.1016/j.neuroimage.2013.07.013>.
- Sitt, J.D., King, J.-R., El Karoui, I., et al., 2014. Large scale screening of neural signatures of consciousness in patients in a vegetative or minimally conscious state. *Brain* 137, 2258–2270. <https://doi.org/10.1093/brain/awu141>.
- Claassen, J., Doyle, K., Matory, A., Couch, C., Burger, K.M., Velazquez, A., Okonkwo, J. U., King, J.-R., Park, S., Agarwal, S., Roh, D., Meghani, M., Eliseyev, A., Connolly, E. S., Rohaut, B., 2019. Detection of brain activation in unresponsive patients with acute brain injury. *N Engl J Med* 380 (26), 2497–2505. <https://doi.org/10.1056/NEJMoa1812757>.

- Hermann, B., Ben Salah, A., Perlberg, V., et al., 2020a. Habituation of auditory startle reflex is a new sign of minimally conscious state. *Brain*.
- Stender, J., Gosseries, O., Bruno, M.-A., Charland-Verville, V., Vanhauzenhuyse, A., Demertz, A., Chatelle, C., Thonnard, M., Thibaut, A., Heine, L., Soddu, A., Boly, M., Schnakers, C., Gjedde, A., Laureys, S., 2014. Diagnostic precision of PET imaging and functional MRI in disorders of consciousness: a clinical validation study. *Lancet* 384 (9942), 514–522.
- Stender, J., Kupers, R., Rodell, A., Thibaut, A., Chatelle, C., Bruno, M.-A., Gejl, M., Bernard, C., Hustinx, R., Laureys, S., Gjedde, A., 2015. Quantitative rates of brain glucose metabolism distinguish minimally conscious from vegetative state patients. *J. Cereb. Blood Flow Metab.* 35 (1), 58–65.
- Stender, J., Mortensen, K., Thibaut, A., Darkner, S., Laureys, S., Gjedde, A., Kupers, R., 2016. The minimal energetic requirement of sustained awareness after brain injury. *Curr. Biol.* 26 (11), 1494–1499. <https://doi.org/10.1016/j.cub.2016.04.024>.
- Engemann, D.A., Raimondo, F., King, J.-R., et al., 2018. Robust EEG-based cross-site and cross-protocol classification of states of consciousness. *Brain* 141, 3179–3192. <https://doi.org/10.1093/brain/awy251>.
- Hermann, B., Raimondo, F., Hirsch, L., Huang, Y.u., Denis-Valente, M., Pérez, P., Engemann, D., Faugeras, F., Weiss, N., Demeret, S., Rohaut, B., Parra, L.C., Sitt, J.D., Naccache, L., 2020b. Combined behavioral and electrophysiological evidence for a direct cortical effect of prefrontal tDCS on disorders of consciousness. *Sci. Rep.* 10 (1) <https://doi.org/10.1038/s41598-020-61180-2>.
- Bekinschtein, T.A., Dehaene, S., Rohaut, B., Tadel, F., Cohen, L., Naccache, L., 2009a. Neural signature of the conscious processing of auditory regularities. *Proc. Natl. Acad. Sci.* 106 (5), 1672–1677.
- Faugeras, F., Rohaut, B., Weiss, N., Bekinschtein, T.A., Galanaud, D., Puybasset, L., Bolgert, F., Sergent, C., Cohen, L., Dehaene, S., Naccache, L., 2011. Probing consciousness with event-related potentials in the vegetative state. *Neurology* 77 (3), 264–268. <https://doi.org/10.1212/WNL.0b013e3182217ee8>.
- Faugeras, F., Rohaut, B., Weiss, N., Bekinschtein, T., Galanaud, D., Puybasset, L., Bolgert, F., Sergent, C., Cohen, L., Dehaene, S., Naccache, L., 2012. Event related potentials elicited by violations of auditory regularities in patients with impaired consciousness. *Neuropsychologia* 50 (3), 403–418. <https://doi.org/10.1016/j.neuropsychologia.2011.12.015>.
- Chennu, S., Anen, J., Wannez, S., et al., 2017. Brain networks predict metabolism, diagnosis and prognosis at the bedside in disorders of consciousness. *Brain* 140, 2120–2132. <https://doi.org/10.1093/brain/awx163>.
- Soddu, A., Gómez, F., Heine, L., et al., 2016. Correlation between resting state fMRI total neuronal activity and PET metabolism in healthy controls and patients with disorders of consciousness. *Brain Behav.* 6 <https://doi.org/10.1002/brb3.424> n/a-n/a.
- Giacino, J.T., Katz, D.I., Schiff, N.D., Whyte, J., Ashman, E.J., Ashwal, S., Barbano, R., Hammond, F.M., Laureys, S., Ling, G.S.F., Nakase-Richardson, R., Seel, R.T., Yablon, S., Getchius, T.S.D., Gronseth, G.S., Armstrong, M.J., 2018. Practice guideline update recommendations summary: Disorders of consciousness: Report of the Guideline Development, Dissemination, and Implementation Subcommittee of the American Academy of Neurology; the American Congress of Rehabilitation Medicine; and the National Institute on Disability, Independent Living, and Rehabilitation Research. *Neurology* 91 (10), 450–460. <https://doi.org/10.1212/WNL.0000000000005926>.
- Giacino, J.T., Kalmar, K., 2005. Diagnostic and prognostic guidelines for the vegetative and minimally conscious states. *Neuropsychol Rehabil* 15, 166–174. <https://doi.org/10.1080/09602010443000498>.
- Engemann, D., Raimondo, F., King, J.-R., et al., 2015. Automated Measurement and Prediction of Consciousness in Vegetative and Minimally Conscious Patients. <https://hal.inria.fr/hal-01225254/document> (accessed 19 Dec 2018).
- King, J.-R., Sitt, J., Faugeras, F., Rohaut, B., El Karoui, I., Cohen, L., Naccache, L., Dehaene, S., 2013b. Information sharing in the brain indexes consciousness in noncommunicating patients. *Curr. Biol.* 23 (19), 1914–1919. <https://doi.org/10.1016/j.cub.2013.07.075>.
- Schiff, N.D., 2015. Cognitive motor dissociation following severe brain injuries. *JAMA Neurol* 72 (12), 1413. <https://doi.org/10.1001/jamaneurol.2015.2899>.
- Edlow, B.L., 2018. Covert Consciousness: Searching For Volitional Brain Activity In The Unresponsive. *Curr. Biol.* 28 (23), R1345–R1348. <https://doi.org/10.1016/j.cub.2018.10.022>.
- Braun, A.R., Balkin, T.J., Wesenten, N.J., et al., 1997. Regional cerebral blood flow throughout the sleep-wake cycle. An H2(15)O PET study. *Brain* 120 (Pt 7), 1173–1197. <https://doi.org/10.1093/brain/120.7.1173>.
- Maquet, P., Degueldre, C., Delfiore, G., Aerts, J., Péters, J.-M., Luxen, A., Franck, G., 1997. Functional neuroanatomy of human slow wave sleep. *J Neurosci* 17 (8), 2807–2812. <https://doi.org/10.1523/JNEUROSCI.17-08-02807.1997>.
- Nofzinger, E.A., Buysse, D.J., Miewald, J.M., et al., 2002. Human regional cerebral glucose metabolism during non-rapid eye movement sleep in relation to waking. *Brain* 125, 1105–1115. <https://doi.org/10.1093/brain/awf103>.
- Laureys, S., Owen, A.M., Schiff, N.D., 2004. Brain function in coma, vegetative state, and related disorders. *Lancet Neurol.* 3 (9), 537–546.
- Shulman, R.G., Hyder, F., Rothman, D.L., 2009. Baseline brain energy supports the state of consciousness. *Proc. Natl. Acad. Sci.* 106 (27), 11096–11101. <https://doi.org/10.1073/pnas.0903941106>.
- Laureys, S., Schiff, N.D., 2012. Coma and consciousness: paradigms (re)framed by neuroimaging. *NeuroImage* 61 (2), 478–491. <https://doi.org/10.1016/j.neuroimage.2011.12.041>.
- Bekinschtein, T., Cologan, V., Dahmen, B., et al., 2009b. You are only coming through in waves: wakefulness variability and assessment in patients with impaired consciousness. *Prog Brain Res* 177, 171–189. [https://doi.org/10.1016/S0079-6123\(09\)17712-9](https://doi.org/10.1016/S0079-6123(09)17712-9).
- Kondziella, D., Friberg, C.K., Frokjaer, V.G., Fabricius, M., Möller, K., 2016. Preserved consciousness in vegetative and minimal conscious states: systematic review and meta-analysis. *J. Neurol. Neurosurg. Psychiatry* 87 (5), 485–492. <https://doi.org/10.1136/jnnp-2015-310958>.
- Pérez, P., Valente, M., Hermann, B., Sitt, J., Faugeras, F., Demeret, S., Rohaut, B., Naccache, L., 2021. Auditory event-related “Global Effect” predicts recovery of overt consciousness. *Front. Neurol.* 11, 1797. <https://doi.org/10.3389/fneur.2020.588233>.
- Peterson, A., 2016. Consilience, clinical validation, and global disorders of consciousness. *Neurosci. Consciousness* 2016. <https://doi.org/10.1093/nc/niw011>.
- Raimondo, F., Rohaut, B., Demertz, A., Valente, M., Engemann, D.A., Salti, M., Fernandez Slezak, D., Naccache, L., Sitt, J.D., 2017. Brain–heart interactions reveal consciousness in noncommunicating patients. *Ann. Neurol.* 82 (4), 578–591. <https://doi.org/10.1002/ana.v82.410.1002/ana.25045>.
- Edlow, B.L., Chatelle, C., Spencer, C.A., et al., 2017. Early detection of consciousness in patients with acute severe traumatic brain injury. *Brain* 140, 2399–2414. <https://doi.org/10.1093/brain/awx176>.
- Bayne, T., Hohwy, J., Owen, A.M., 2017. Reforming the taxonomy in disorders of consciousness. *Ann Neurol* 82 (6), 866–872. <https://doi.org/10.1002/ana.v82.610.1002/ana.25088>.
- Naccache, L., 2018. Minimally conscious state or cortically mediated state? *Brain* 141, 949–960. <https://doi.org/10.1093/brain/awx324>.
- Wannez, S., Heine, L., Thonnard, M., Gosseries, O., Laureys, S., 2017. The repetition of behavioral assessments in diagnosis of disorders of consciousness. *Ann Neurol* 81 (6), 883–889. <https://doi.org/10.1002/ana.v81.610.1002/ana.24962>.