



**HAL**  
open science

# INSHORE MIGRATION OF THE TROPICAL GLASS EELS *ANGUILLA MARMORATA* RECRUITING TO POSO ESTUARY, SULAWESI ISLAND, INDONESIA

B. Budimawan, R Lecomte-Finiger

► **To cite this version:**

B. Budimawan, R Lecomte-Finiger. INSHORE MIGRATION OF THE TROPICAL GLASS EELS *ANGUILLA MARMORATA* RECRUITING TO POSO ESTUARY, SULAWESI ISLAND, INDONESIA. *Vie et Milieu / Life & Environment*, 2005, pp.7-14. hal-03218982

**HAL Id: hal-03218982**

<https://hal.sorbonne-universite.fr/hal-03218982v1>

Submitted on 6 May 2021

**HAL** is a multi-disciplinary open access archive for the deposit and dissemination of scientific research documents, whether they are published or not. The documents may come from teaching and research institutions in France or abroad, or from public or private research centers.

L'archive ouverte pluridisciplinaire **HAL**, est destinée au dépôt et à la diffusion de documents scientifiques de niveau recherche, publiés ou non, émanant des établissements d'enseignement et de recherche français ou étrangers, des laboratoires publics ou privés.

# INSHORE MIGRATION OF THE TROPICAL GLASS EELS *ANGUILLA MARMORATA* RECRUITING TO POSO ESTUARY, SULAWESI ISLAND, INDONESIA

BUDIMAWAN<sup>1,2</sup>, R. LECOMTE-FINIGER<sup>2\*</sup>

<sup>1</sup>Laboratory of Marine Biology, Faculty of Marine and Fisheries, Unhas  
Jl. P. Kemerdekaan Km 10, Makassar 90245, Indonesia

<sup>2</sup>Laboratoire d'Ichtyoécologie Tropicale et Méditerranéenne, EPHE-CNRS,  
UMR 8046 « Récifs coralliens », Université de Perpignan,  
52 avenue Paul Alduy, 66860 Perpignan cedex, France

Corresponding author: lecomte@univ-perp.fr

ANGUILLA MARMORATA  
GLASS EELS  
RECRUITMENT  
OTOLITH MICROSTRUCTURE  
POSO ESTUARY

**ABSTRACT.** – In order to determine the inshore migration mechanisms of the tropical eel *Anguilla marmorata* (Quoy et Gaimard, 1824) entering the Poso estuary (Sulawesi, Indonesia), glass eels were collected throughout 1999. We subjected these samples to morphological examination and aged a subsample. Environmental factors were investigated. Glass eels were active at night, with high activity between 02.00 and 04.00 o'clock. Migration was initiated by increase in water flow. The peak of migration occurred in January-March. Pigmentation stages, length, weight and factor condition were analysed and showed variations. A subsample of glass eels was aged by examinations of sagittal otoliths. Duration of marine larval stage was estimated to be 97-102 days and discussed.

ANGUILLA MARMORATA  
CIVELLE  
RECRUTEMENT  
OTOLITHE  
ESTUAIRE DE POSO  
INDONÉSIE

**RÉSUMÉ.** – La migration anadrome de l'Anguille marbrée *Anguilla marmorata* (Quoy et Gaimard, 1824) dans l'estuaire de Poso (Sulawesi, Indonésie) a été suivie en 1999. Des échantillons de civelles ont été collectés mensuellement et les facteurs environnementaux relevés. Les civelles ont été décrites morphologiquement et un sous-échantillon a été utilisé pour évaluer l'âge. Les civelles sont actives de nuit et leur pic d'activité se situe entre 02,00 et 04,00 heures. La migration débute avec la marée montante. Le pic de migration est observé entre janvier et mars. La taille, le poids, la pigmentation et l'indice de condition ont été analysés et présentent des variations. Les sagittae du sous-échantillon ont été extraits et la durée de vie marine estimée à 97-102 jours.

## INTRODUCTION

The tropical eel *Anguilla marmorata* Quoy et Gaimard, 1824 is one of the most common eel species which has a widespread distribution in the world (Ege 1939, Jespersen 1942). It occurs throughout the Indo-Pacific region (Tesch 1977). The adults reach greater size than most temperate species. Like all anguillid species, *A. marmorata* spawns in the ocean and has leptocephalus larvae. After metamorphosis into glass eels, inshore migration starts. The wide distribution of *A. marmorata* throughout the Pacific and Indian oceans indicates that it differs from temperate species (e.g. *A. anguilla* and *A. rostrata*) and has multiple spawning areas. Compared with temperate eels little is known about the early life history and recruitment mechanisms. However, recent efforts have revealed the early life history and inshore migration of tropical eels (Budimawan 1997, Arai *et al.* 1999, Arai *et al.* 2001, Lecomte-Finiger *et al.*

2001, Sugeha *et al.* 2001a, 2001b, Miller *et al.* 2002, Robinet *et al.* 2003). The invasion of freshwater by juvenile eels (variously referred to as glass eels, elvers or "civelles" in French) of the genus *Anguilla* is a well known seasonal phenomenon in many countries. In temperate regions the peak of arrival time is from late winter to early spring (Tesch 1977, Sugeha *et al.* 2001). In tropical regions, however, this phenomenon has not been well documented (Arai *et al.* 1999, 2001, Sugeha *et al.* 2001). Knowledge of the inshore migration is rudimentary.

This paper deals with a yearly survey of the inshore migration of the *Anguilla marmorata* glass eels in the Poso estuary, Tomini Bay, Indonesia. The monthly and hourly recruitment patterns of *A. marmorata* were followed. The morphological characters, otolith microstructure, age of different pigmentation stages and growth rate were measured. The effects of environmental factors on glass eel movements during the inshore migration were examined.

## MATERIALS AND METHODS

**Sampling and morphological characters:** The samples were collected (Fig 1) in the Poso Estuary (0° 15' S; 120° 10' E), Tomini Bay, Center of Sulawesi (Indonesia) for one year, from January to December 1999 using a typical glass eel trap made of bamboo. A monthly and hourly sampling of *A. marmorata* in the Poso Estuary was conducted to explain the recruitment mechanism and chronology. The monthly period of sampling was fixed on 3<sup>rd</sup> – 4<sup>th</sup> week of lunar cycle. This period is assumed, based on other tropical species (Sugeha *et al.* 2001), as the season of upstream migration of juvenile eels in the Poso Estuary. The environmental parameters such as salinity, temperature, turbidity (with the Secchi disk), current velocity (through floating object) were investigated. At the peak season, hourly sampling was conducted to determine migration rhythm. At that moment, glass eels were scooped out three times during one minute with a long handled dip net. The mean number of glass eels by minute (cpue) was obtained.

All specimens were preserved in 70% ethanol and then identified using morphometric criteria: caudal pigmentation, ano-dorsal distance to total length and total number of vertebrae (Ege 1939, Tabeta *et al.* 1976, Tesch 1977). *Anguilla marmorata* specimens were weighed to the nearest 0.01 g and measured to the nearest 1 mm and then classified through their pigmentation

stage according to Elie *et al.* 1982. The condition factor (Cc) was calculated as following:

$$CC = \frac{W}{L^3} \times 10^3$$

where: W = individual weight in g; L = individual total length in cm

**Otolith preparation:** Thirty *Anguilla marmorata* specimens of January and February '99 were used for ageing. The sagittae were removed, embedded in epoxy resin, ground (600 and 1000 grit paper) and polished until the core was exposed. To reveal the marks for age determination, the polished otoliths were etched with 5% EDTA and coated with gold before examination on Scanning Electron Microscope (SEM Hitachi S-520) at different magnifications. SEM-photographs were used for counting the number of growth increments and measuring their widths. To estimate the age of the fish beyond hatching otolith increments were counted, as suggested in the previous studies (Lecomte-Finiger 1992, Budimawan 1997). An optical imaging system was used to count increments and to measure increment widths, and the distance from core to the first exogenous feeding ring. Incremental counts were discriminated between leptocephalus and metamorphic zones. Total ages of the fish were estimated as the age from hatching ring to the transition mark or to the edge of the otolith. The growth pattern was determined. Otolith increments of *A. marmorata* have been validated to be deposited daily (Sugeha *et al.* 2001a).

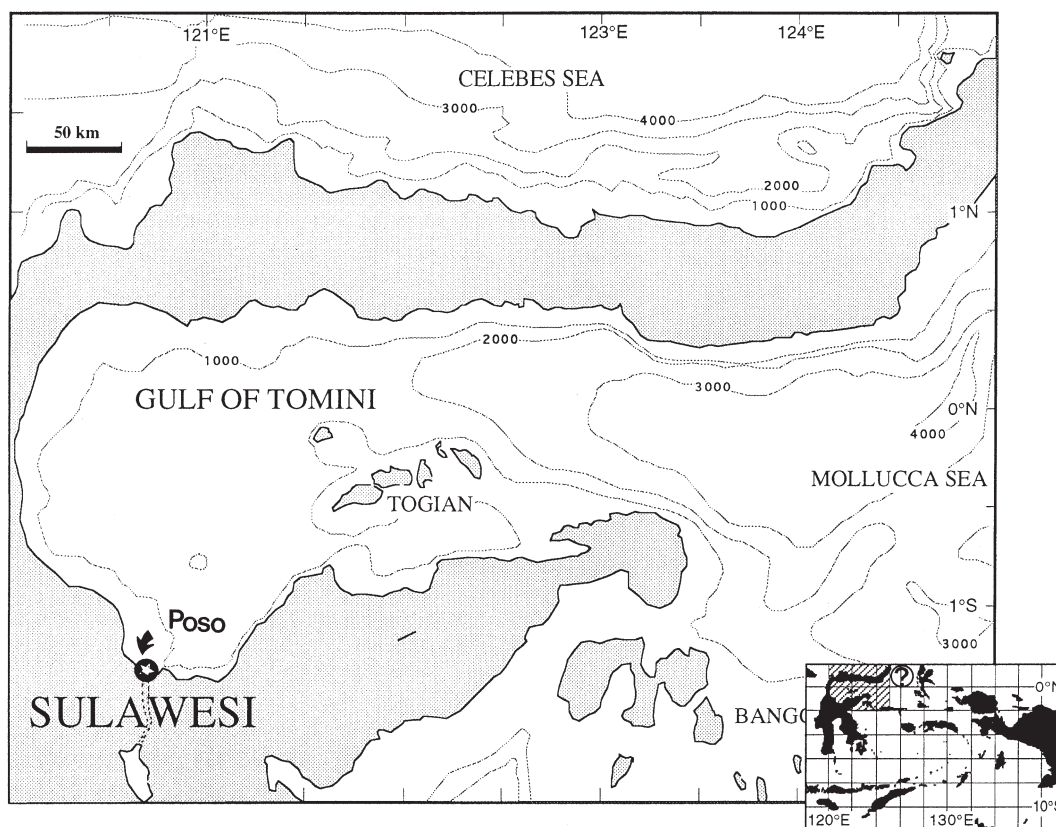


Fig. 1. – Poso Estuary in Sulawesi (Indonesia).

**RESULTS**

*Length, weight and condition*

Total body length (TL) ranged from  $4.66 \pm 0.20$  to  $5.06 \pm 0.23$  cm, weight (W) from  $0.10 \pm 0.01$  to  $0.15 \pm 0.03$  g and condition (Cc) from  $0.89 \pm 0.11$  to  $1.32 \pm 0.16$  g/cm<sup>3</sup> (Table I).

Table I. – *Anguilla marmorata*. Size and weight of glass eels (Poso Estuary, 1999).

Sample	N fish	Total length (Mean ± S.D) cm	Weight (Mean ± S.D) g	Condition (Mean ± S.D)
January	200	$5.02 \pm 0.23$	$0.13 \pm 0.05$	$0.97 \pm 0.49$
February	200	$4.95 \pm 0.23$	$0.14 \pm 0.03$	$1.19 \pm 0.22$
March	200	$5.06 \pm 0.23$	$0.14 \pm 0.04$	$1.07 \pm 0.24$
April	168	$4.66 \pm 0.20$	$0.12 \pm 0.04$	$1.24 \pm 0.64$
May	270	$5.04 \pm 0.24$	$0.15 \pm 0.03$	$1.15 \pm 0.11$
June	269	$4.85 \pm 0.26$	$0.11 \pm 0.02$	$0.92 \pm 0.14$
July	281	$4.93 \pm 0.24$	$0.11 \pm 0.02$	$0.90 \pm 0.13$
August	266	$4.95 \pm 0.19$	$0.13 \pm 0.02$	$1.07 \pm 0.16$
September	278	$4.98 \pm 0.18$	$0.14 \pm 0.02$	$1.12 \pm 0.12$
October	118	$4.73 \pm 0.15$	$0.13 \pm 0.02$	$1.26 \pm 0.16$
November	118	$4.84 \pm 0.18$	$0.10 \pm 0.01$	$0.89 \pm 0.11$
December	121	$4.84 \pm 0.22$	$0.15 \pm 0.03$	$1.32 \pm 0.16$

*Pigmentation*

For the purpose of the present study, the term of glass eels refers to transparent stages VB, VIA<sub>1</sub> and VIA<sub>2</sub>, while pigmented stages VIA<sub>3</sub>, VIA<sub>4</sub> and VIB are elvers. Glass eels recruited to the estuary throughout the year (Table II). Samples of April '99,

May '99 and June '99 showed elvers and could be considered as samples of the end of the migrating season.

Table II. – *Anguilla marmorata*. Frequency (%) of glass eels (upper value) and elvers (lower value) in Poso Estuary (1999).

Sample	N	VB	VIA <sub>1</sub>	VIA <sub>2</sub>	VIA <sub>3</sub>	VIA <sub>4</sub>	VIB
January	200	100.0					
February	200	80.5	19.5				
March	200	100.0					
April	168	18.5	26.8	28.0		25.5	1.2
May	270	29.0	20.5	15.5		30.0	5.0
June	269	17.5	7.5	17.5		51.0	6.0
July	281	87.8	1.0				0.5
August	266	76.0	23.0				
September	278	80.5	19.5				
October	118	85.0	15.0				
November	118	91.0	9.0				
December	121	97.0	3.0				

*Time of arrival*

From the morphological data (Table I) and from the pigmentation-stage data, the beginning and the peak season of the inshore migration of *Anguilla marmorata* glass eels in the Poso Estuary were in January and March respectively, while the end of the inshore season was in June. The beginning and the peak of the glass-eel migration was characterized by big and heavy glass eels, while the end of the migration was characterized by small and light elvers (Table III top).

Table III. – *Anguilla marmorata*. Top, Evolution of Weight, Length, and Condition according to the pigmentation stage (sample of June 1999): \*Mean ± S.D. Middle, measurements (mean ± std Deviation, in (m) of the microstructures of Sagittae (n = 19). Bottom, number of increments (in days) in each zone on otoliths.

Data	Pigmentation stage					
	VB	VIA <sub>1</sub>	VIA <sub>2</sub>	VIA <sub>3</sub>	VIA <sub>4</sub>	VIB
Weight *	$0.16 \pm 0.02$	$0.16 \pm 0.02$	$0.16 \pm 0.02$	$0.15 \pm 0.02$	$0.14 \pm 0.02$	0.16
Length *	$4.77 \pm 0.18$	$4.76 \pm 0.16$	$4.81 \pm 0.21$	$4.70 \pm 0.18$	$4.65 \pm 0.22$	5.10
Condition	$1.51 \pm 0.15$	$1.47 \pm 0.17$	$1.44 \pm 0.22$	$1.45 \pm 0.18$	$1.38 \pm 0.25$	1.21
N Fish	35	15	35	102	12	1
	Core Diameter	Yolk sac period	Diameter of the first feeding check intake	Leptocephalus Growth	Metamorphosis Growth	Otolith Diameter
January	$9.5 \pm 1.4$	$5.2 \pm 0.7$	$19.9 \pm 1.9$	$71.8 \pm 8.3$	$35.5 \pm 7.7$	$220.1 \pm 15.8$
February	$9.7 \pm 1.6$	$5.1 \pm 0.7$	$19.8 \pm 2.4$	$60.7 \pm 7.5$	$37.4 \pm 10.3$	$221.2 \pm 19.1$
		N	Leptocephalus growth zone	Metamorphosis Growth zone	Total	
January		23	$79.1 \pm 11.2$	$19.2 \pm 2.1$	$97.3 \pm 12.3$	
February		19	$82.8 \pm 6.5$	$19.4 \pm 1.7$	$102.3 \pm 7.6$	

### Environmental factors

At the peak recruitment in March (Fig. 2A) an average catch of 20 glass eels per minute occurred (Table II). Three of the four environmental factors, turbidity (Fig. 2B), relative depth (Fig. 2C) and velocity of current (Fig. 2E) did not show a clear correlation with the recruitment; only salinity (Fig. 2D) showed a correlation. There was a recruitment peak when salinity decreased. Decreasing of salinity coincided to the freshwater discharge from river induced an increase in turbidity.

Glass eels migrating in the Poso Estuary were collected only at night, 18.00-06.00 h with two peaks: the main peak between 02.00 and 04.00 h and another between 18.30 and 20.00 h (Fig 3). This result is different to those reported in other results where the main peak lies between 18.00-20.00 (Sugeha *et al.* 2001). It is important to emphasize that this peak coincided with a simultaneous occurrence of a spring high tide from the sea and the freshwater discharge from the Poso River.

### Otolith microstructure

All sagittae revealed the similar microstructural patterns (Fig 4) as previously described by Budimawan (1997). The primordium was characterized by a deep dark hole in the central area (Fig 4A). Its form varied slightly from round to subelliptical and triangular. It was surrounded by a white band called the core. The primordium and core corresponded to the nucleus. The hatch-check (Fig 4B) was characterized by a heavy dark ring lying between the core and the embryonic-life band, which showed a crystalline structure oriented perpendicularly to the increments. Up to this band, no increment could be identified. The increments formed regularly after being initiated by a discontinuous zone. This check is associated with a critical period lasting from the end of yolk resorption to the first exogenous feeding. The leptocephalus growth zone was characterized by the clear increments in this area. This zone includes from the first increment until the first metamorphosis ring. The metamorphosis growth zone was formed after the leptocephalus growth zone. The principal characteristics of microstructure on sagittal otoliths are listed in Table III, middle.

### Ageing and growth rate

The mean age (Table III bottom) of these samples were estimated to be about 3 months (97 - 102 days). Our analysis shows that there was a variation of increment width, with a remarkable peak just before metamorphosis in sagittae (Fig 5). The mean growth rate in the metamorphosis zone (M-increments) was approximately  $2.20 (\pm 0.13) \mu\text{m}$  per day

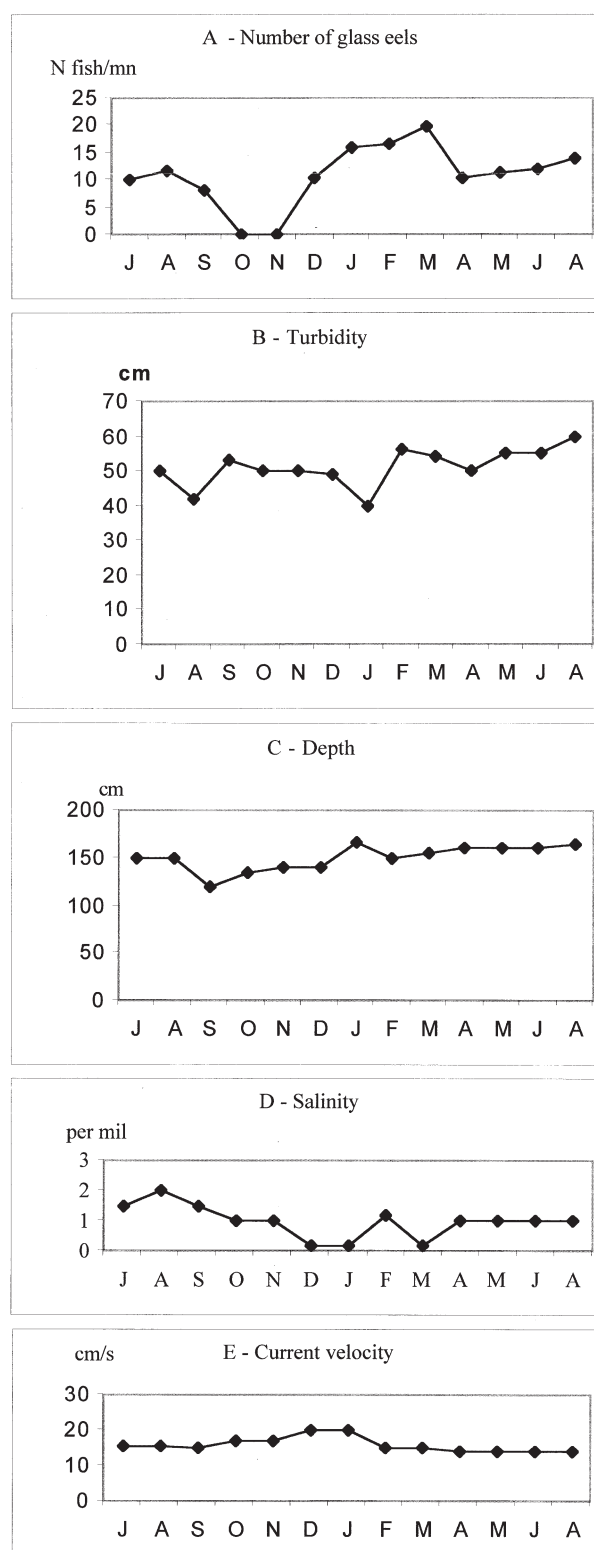


Fig. 2. – Environmental factors and number of recruits. (A): Turbidity (B), Relative depth (C), Salinity (D) and Velocity of current (E).

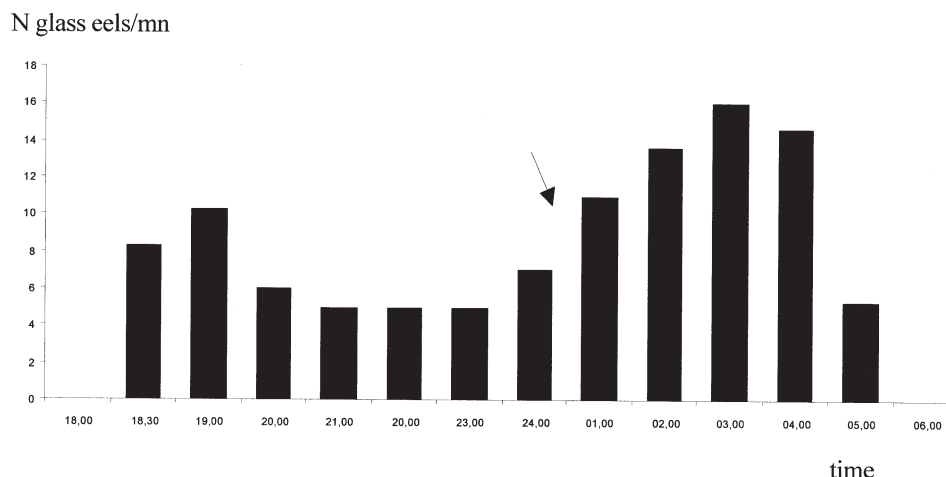


Fig. 3. – Hourly catch of *Anguilla marmorata* glass eels in the Poso Estuary (a night-catch on March 1999).

and statistically higher than that of leptocephalus zone (L-increments),  $0.93 (\pm 0.06) \mu\text{m}$  per day.

## DISCUSSION

Three species of tropical eels (Arai *et al.* 1999) entered the Poso estuary: *Anguilla celebesensis* was the most dominant species (88.3%) throughout 1997 followed by *A. marmorata* (11.3%) and *A. bicolor pacifica* (0.4%). Sugeha *et al.* (2001b) made a three year survey and determined that the three species were found each year in fluctuating abundances. In the present one-year study of the *A. marmorata* composition of glass eels and elvers using external and internal morphological analysis, a new understanding of the biological and behavioural factors were reported about the inshore migration.

*Anguilla marmorata* glass eels enter the Poso estuary throughout the year with a peak in March indicating that probably this species spawns all months of the year. The high proportion of glass eels (transparent and considered as early larvae) throughout the year and the 20-day duration of the metamorphosis growth band in otoliths indicate also that they probably recruit relatively soon after metamorphosis. Sugeha *et al.* (2001a) reported the same results for other eel species in the estuary of the Poigar River in northern Sulawesi.

Morphological data confirmed that tropical glass eels like *Anguilla marmorata* are shorter and lighter than both Atlantic eels, European eel *A. anguilla* (TL =  $7.2 \pm 0.2$  cm; W =  $0.42 \pm 0.08$  g; Cc =  $1.2 \pm 0.2$ ) and American eel, *A. rostrata* (TL =  $6.2 \pm 0.5$  cm; W =  $0.32 \pm 0.08$  g; Cc =  $1.1 \pm 0.2$ ) (Yahyaoui 1983, Cantrelle 1984, Guerault *et al.* 1992, Desauyay *et al.* 1996, Budimawan 1997). The advance in pigmentation stage recorded late in the season reflects two factors: first, a possible accumulation of glass eels

at the mouth of the estuary, the larvae becoming progressively more pigmented; second, the arrival of glass eels later in the season means an extended post metamorphic marine life. Length, weight and condition declined from stages VB to VIB. The growth increased again at VIA3 stage during which the elvers began exogenous feeding (Lecomte-Finiger 1983).

Glass eels arrive only at night and the water flow played an important role. This result is well known for temperate eels species and glass eels are active at night and rest during daytime (Tesch 1977, Sloane 1984, Martin 1995). This is consistent with the glass-eel behavior including *Anguilla anguilla* (Lecomte-Finiger & Prodon 1979), *A. japonica* (Tsukamoto 1990), *A. rostrata* (Martin 1995), *A. australis* and *A. dieffenbachii* (Jellyman 1977). Outside this period, in the diurnal period (06.00 – 18.00 o'clock), swimming activity of glass eels decreases. During this period, glass eels rest in the sediment (Lecomte-Finiger & Prodon 1979).

The mean otolith radius of  $125.07 \pm 3.16 \mu\text{m}$  (with 92 increments i.e. average width increment of  $1.36 \mu\text{m}$ ) of *Anguilla marmorata* glass eels was slightly higher (133 increments in  $137 \mu\text{m}$ , i.e. average width increment =  $1.03 \mu\text{m}$ ) than reported by Tabeta *et al.* (1987) for *A. japonica*. Two zones may be distinguished on the basis of increment growth-rate as demonstrated in other species: *Solea solea* (Lagardère 1989), *A. japonica* (Umezawa & Tsukamoto 1987, Tzeng & Tsai 1992). The leptocephalus growth zone and the metamorphosis growth zone are separated by a diffuse zone characterized by irregular-width increments which make counting difficult, and in consequence an interpolation value should be used. Antunes & Tesch (1997) designated this zone as “zone without ring”. The precise position of the transitions from the leptocephalus growth zone to the diffuse zone and from the diffuse zone to the metamorphosis growth

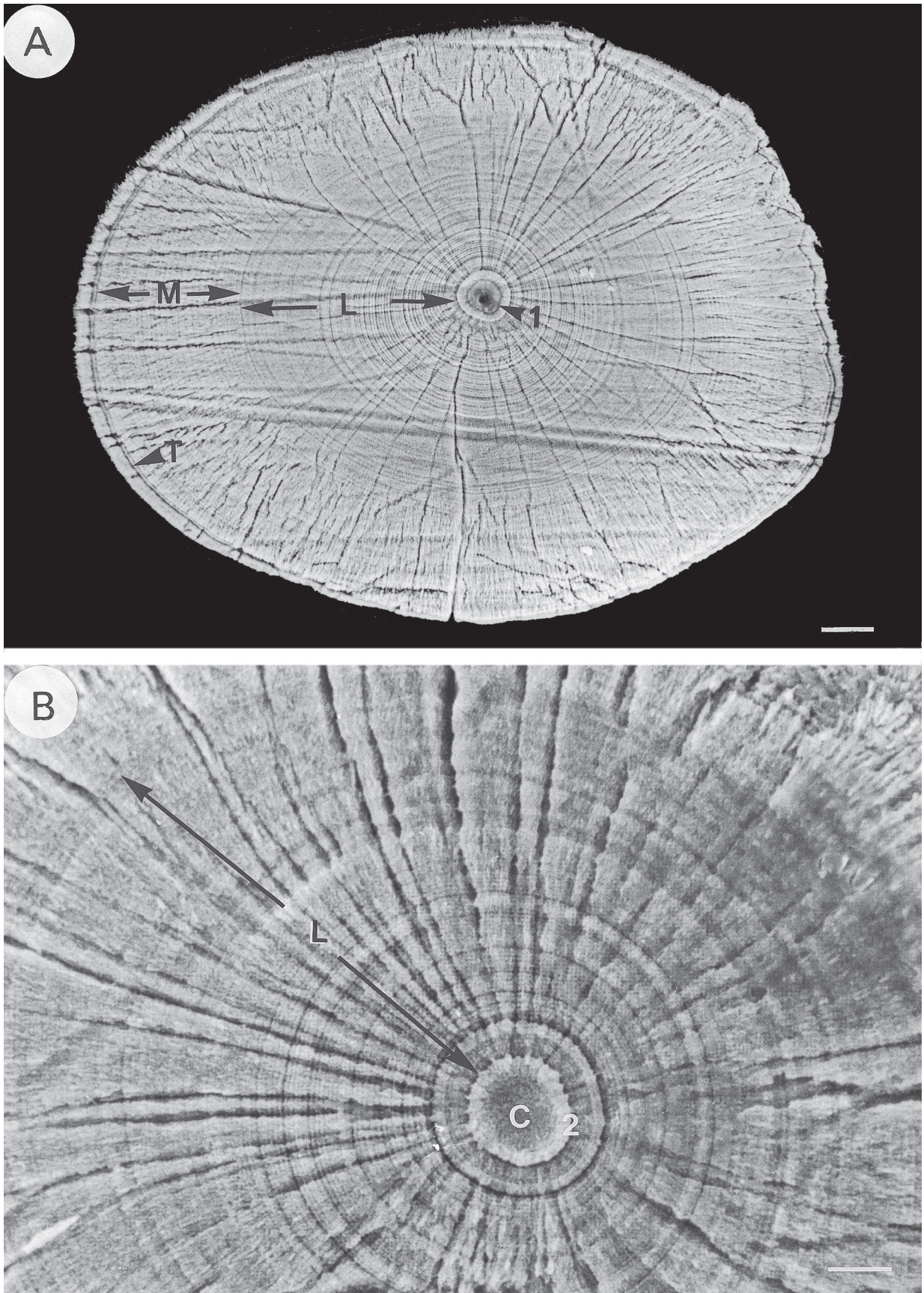


Fig. 4. – Microstructural pattern in sagittae of *Anguilla marmorata* (Scale bar 20  $\mu\text{m}$ ). A: Sagittal section; L: Leptocephalus zone; M: Metamorphosis zone; T: Transition; 1: nucleus; B: Details; C: Core; 2: First exogenous; feeding; L: Leptocephalus zone.

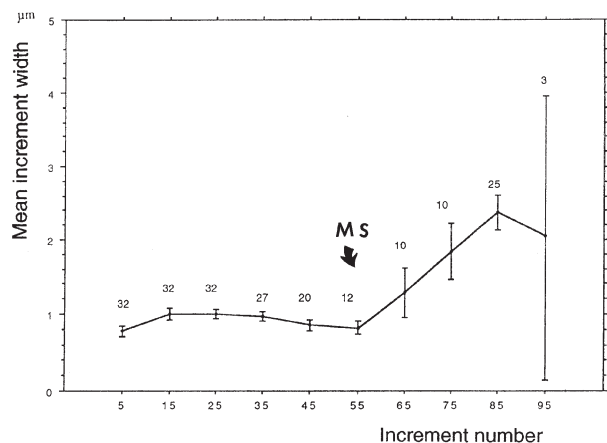


Fig. 5. – Daily growth of Sagitta of *A. marmorata*. MS: Metamorphosis zone on sagitta.

zone is difficult to define. A comparison of the leptocephalus growth zone and the metamorphosis growth zone shows that the mean width of (M)-increments is higher than that of (L)-increments.

The evidence of daily increment (Pannella 1971) suggests a presence of daily deposition in the eel species: *Anguilla anguilla* (Lecomte-Finiger & Yahyaoui 1989), *A. rostrata* (Castonguay 1987), *A. marmorata* (Tabeta *et al.* 1987). It has been validated in the Japanese eel, *A. japonica* (Tsukamoto *et al.* 1989, Umezawa *et al.* 1989, Lee & Lee 1989) in the American eel *A. rostrata* (Martin 1995) and recently in *A. marmorata* (Sugeha *et al.* 2001a). This age could be associated with marine larval life during which the larvae required a migration from spawning ground to coastal waters. This estimated age is largely shorter than in other eel species: *A. japonica*, age at recruitment in Taiwan 112.8 to 156.5 days (Tzeng 1990, Tzeng & Tsai 1992, Cheng & Tzeng 1996), in Japan  $218 \pm 29$  days (Schmidt 1922, Tsukamoto 1990), *A. anguilla* 9 to 11 months or more than one year in the European estuaries (Lecomte-Finiger 1992, Wang & Tzeng 2000), *A. rostrata*, 8 to 12 months one year (Tsukamoto *et al.* 1991, Wang & Tzeng 1998).

As all samples have the same age, their distance from spawning site to recruitment site (Poso Estuary) is the same. The presence of these transparent glass eels in great proportion could indicate the existence of a spawning area not far from this bay. Budimawan (1996) suggested that the spawning area could be in Malacca Sea and/or in Tomini Bay. It is well known that this species has a very extensive distribution, West to East, from Africa to the Marquesas Islands (Ege 1939). In contrast to temperate eels *Anguilla anguilla*, *A. rostrata* and *A. japonica*, each species spawns in one breeding area, the tropical eels may utilize many spawning grounds. For example, Marquet (1992) presumed that *A. marmorata* from French Polynesia spawned near French Polynesia waters ( $130^{\circ}$ - $135^{\circ}$ W; $15$ - $20^{\circ}$ S)

and, Miller *et al.* 2002 reported a spawning area in the western north Pacific in the North Equatorial Current (NEC). Another breeding ground in the Indian Ocean lies east of Madagascar (Jespersen 1942). Future studies on tropical eels are needed to provide information about their marine adult life.

In conclusion, recruitment of *Anguilla marmorata* in Poso Estuary occurs throughout the year with beginning, peak and end of season lying respectively in January, March and June. Upstream migration of *A. marmorata* glass eels in Poso Estuary occurs at night, with two peaks, one at 02.00-04.00 o'clock the most abundant, another at 18.30 - 20.00 o'clock local time. The low salinity due to freshwater discharge from river and tidal flow from the sea should be considered as an important factor affecting the recruitment of tropical eel *A. marmorata*. The information here was collected at only one site and during one year, so it is not possible to generalize these results. Additional research is needed.

ACKNOWLEDGEMENTS. – The authors thank the Yaoung Academic Project of URGE (Higher Directorate, Departement of National Education of Indonesia) for financial support, Pr E Taylor and the referees for their critical comments.

## REFERENCES

- Antunes C, Tesch FW 1997. A critical consideration of the "Metamorphosis zone" when identifying daily ring in the otolith of the European eel *Anguilla anguilla*. *Ecol Freshwat Fish* 6: 102-107.
- Arai T, Aoyama J, Limbong D, Tsukamoto K 1999. Species composition and inshore migration of tropical eels, *Anguilla sp.*, recruiting to the estuary of the Poigar River, Sulawesi Island. *Mar Ecol Prog Ser* 188: 299-303.
- Arai T, Limbong D, Otake T, Tsukamoto K 2001. Recruitment mechanism of *Anguilla sp.* and implications for the evolution of oceanic migration in the genus *Anguilla*. *Mar Ecol Prog Ser* 216: 253-264.
- Budimawan 1996. A contribution to the understanding of the marine phases of the larval development of five Atlantic and Indo-Pacific eels: An otolithometry study. *Cybium* 20: 319-320.
- Budimawan 1997. Comparison of daily growth increment and age at recruitment of the tropical eel, *Anguilla marmorata* (Quoy et Gaimard, 1824) collected from four pacific estuaries. *J Appl Ichtyo* 13: 57-62.
- Cantrelle I 1984. Les populations de civelles d'*Anguilla anguilla* L. en migration dans l'estuaire de la Gironde. *Vie Milieu* 34 (2/3): 109-116.
- Castonguay M 1987. Growth of American and European eel leptocephali as revealed by otolith microstructure. *J Can Zool* 65 (4): 875-878.
- Cheng PW, Tzeng WN 1996. Timing of metamorphosis and estuaries arrival across the dispersal range of the Japanese eel *Anguilla japonica*. *Mar Ecol Prog Ser* 131: 87-96.
- Desaunay Y, Guerault D, Lecomte-Finiger R 1996. Variation of the oceanic larval migration of *Anguilla an-*



- guilla* (L.) glass eels from a two-year study in the Vilaine Estuary (France). *Arch Polish Fish* 4: 195-210.
- Ege V 1939. A revision of the Genus *Anguilla*, Show: Systematic, phylogenetic and geographical study. *Dana Rep* 16 (3): 8-256.
- Elie P, Lecomte-Finiger R, Cantrelle I, Charlon N 1982. Définition des limites des différents stades pigmentaires durant la phase civelle d'*Anguilla anguilla*. *Vie Milieu* 32: 149-157.
- Guerault D, Lecomte-Finiger R, Desaunay Y, Biagian-ti-Risbourg S, Beillois P, Grellier P 1992. Glass-eel arrival in the Vilaine Estuary (Northern Bay of Bis-cay) in 1990: Demographic features and early life his-tory. *Irish Fish Invest Series A* 36: 5-12.
- Jellyman DJ 1977. Invasion of a New Zealand freshwa-ter stream by glass eels of two *Anguilla* spp. *N Z J Mar Freshw Res* 11: 193-209.
- Jespersen P 1942. Indo-Pacific leptocephali of the Genus *Anguilla*. *Dana Rep* 22: 1-128.
- Lagardère F 1989. Influence of feeding condition and temperature on growth rate and otolith increment de-position for Dover sole (*Solea solea*). *Rap PV Réu-nion Cons Int Explor Mer* 191: 390-399.
- Lecomte-Finiger R 1983. Etude morphologique et éner-gétique de la civelle en Méditerranée au cours de sa pigmentation. *Vie Milieu* 33: 87-92.
- Lecomte-Finiger R 1992. Growth history and age at re-cruitment of European glass eel (*Anguilla anguilla*) as revealed by otolith microstructure. *Mar Biol* 114: 205-210.
- Lecomte-Finiger R, Prodon R 1979. Étude expérimen-tale du comportement fousseur de la civelle (*Anguil-la anguilla* L): le choix d'un substrat. *C R Acad Sci Paris* 289: 714-743.
- Lecomte-Finiger R, Yahyaoui A 1989. La microstructure de l'otolith au service de la connaissance du déve-loppement larvaire de l'Anguille européenne *Anguilla anguilla*. *C R Acad Sci Paris* 308 (3): 1-7.
- Lecomte-Finiger R, Loyat A, Yan L 2001. First record of *Anguilla* glass eels from an atoll of French Polyne-sia: Rangiroa, Tuamotu archipelago. *Atoll Res Bull* 486: 1-6.
- Lee TW, Lee KS 1989. Daily growth increments and lu-nar pattern in otolith of the eel, *Anguilla japonica*, in freshwater. *Bull Korean Fish Soc* 22 (1): 36-40.
- Marquet G 1992. L'étude du recrutement et de la physio-logie des anguilles de Polynésie Française, per-met-elle de cerner leur aire de ponte? *Bull Inst Océanogr Monaco* 10: 129-147.
- Martin MH 1995. Validation of daily growth increments in otoliths of *Anguilla rostrata* (Le Sueur) elvers. *Can J Zool* 73: 208-211.
- Miller MJ, Mochioka N, Otake T, Tsukamoto K 2002. Evidence of a spawning area of *Anguilla marmorata* in the western North Pacific. *Mar Biol* 140: 809-814.
- Pannella G 1971. Fish otolith: daily growth layer and pe-riodical pattern. *Science* 173: 1124-1127.
- Robinet T, Lecomte-Finiger R, Escoubeyrou K, Feun-teun E 2003 Tropical eels *Anguilla* spp. recruiting to Réunion Island in the Indian ocean: taxonomy, pat-terns of recruitment and early life histories. *Mar Ecol Prog Ser* 259: 263-272.
- Schmidt J 1922. The breeding places of the eel. *Phil Trans Royal Soc* 211 (B): 179-208.
- Sloane RD 1984. Invasion and upstream migration by glass eels of *Anguilla australis australis* and *A. ren-hardtii* in Tasmanian freshwater streams. *Aust J Mar Freshw Res* 35: 47-59.
- Sugeha HY, Shinoda A, Marui M, Arai T, Tsukamoto K 2001a. Validation of otolith daily increment in the tropical eel *Anguilla marmorata*. *Mar Ecol Prog Ser* 220: 291-294.
- Sugeha HY, Arai T, Miller M, Limbong D, Tsukamoto K 2001b. Inshore migration of the tropical eels *Anguilla* spp recruiting to the Poigar River estuary on north Sulawesi Island. *Mar Ecol Prog Ser* 221: 233-243.
- Tabeta O, Tanimoto T, Takai T, Matsui I, Imamura T 1976. Seasonal occurrence of Anguillid elvers in Ca-gayan River, Luzon Island, the Philippines. *Bull Jap Soc Scient Fish* 42: 421-426.
- Tabeta O, Tanaka K, Yamada J, Tzeng WN 1987. Aspects of the early life history of the Japanese eel, *Anguilla japonica* determined from otolith micro-structure. *Nippon Suisan Gakkaishi* 53 (10): 1727-1734.
- Tesch FW 1977. The eel: Biology and management of anguillid eels. Chapman & Hall, London, 434p.
- Tsukamoto K 1990. Recrutement mechanism of the eel, *Anguilla japonica* to Japanese Coast. *J Fish Biol* 36: 659-671.
- Tsukamoto K, Otake T, Umezawa A, Tateno S, Akimoto Y 1991. Age and growth of Atlantic eels as revealed by otolith microstructure. *Ocean Research Inst Univ Tokyo*, 2p.
- Tsukamoto K, Umezawa A, Tabeta O, Mochioka N, Kajihara T 1989. Age and birth date of *Anguilla japo-nica* leptocephali collected in Western North Pacific in September 1986. *Nippon Suisan Gakkaishi* 55(6): 1023-1026.
- Tzeng WN 1990. Relationship between growth rate and age at recruitment of *Anguilla japonica* elver in Tai-wan Estuary as inferred from otolith growth incre-ment. *Mar Biol* 10: 75-81.
- Tzeng WN, Tsai YC 1992. Otolith microstructure and daily age of *Anguilla japonica*, Temminck and Schleg-el elver the estuaries of Taiwan with reference to unit stock and larval migration. *J Fish Biol* 40: 845-857.
- Umezawa A, Tsukamoto K 1987. Age and birth date of the glass eel, *Anguilla japonica* collected in Taiwan. *Nippon Suisan Gakkaishi* 56(8): 1199-1202.
- Umezawa A, Tsukamoto K, Tabeta O, Yamakawa H 1989. Daily growth increments in the larval otolith of Japanese eel, *Anguilla japonica*. *Jap J Ichthyol* 35 (4): 440-443.
- Wang CH, Tzeng WN 1998. Interpretation of geographic variation in size of American eel *Anguilla rostrata* el-vers on the Atlantic coast of North America using their life history and otolith ageing. *Mar Ecol Prog Ser* 168: 35-43.
- Wang CH, Tzeng WN 2000. The timing of metamorpho-sis and growth rates of American and European eel leptocephali: a mechanism of larval segregative mi-gration. *Fish Res* 46: 191-205.
- Yahyaoui A 1983. Étude comparée (recrutement, crois-sance et polymorphisme enzymatique) des popula-tions atlantiques et méditerranéennes (Maroc-France) de civelles d'*Anguilla anguilla*. Thèse Doct Univ Per-pignan.

Reçu le 15 janvier 2004; received January 15, 2004

Accepté le 12 mai 2004; accepted May 12, 2004