



HAL
open science

The Use of Radial Artery for CABG: An Update

Francesco Nappi, Francesca Bellomo, Pierluigi Nappi, Camilla Chello, Adelaide Iervolino, Massimo Chello, Christophe Acar

► **To cite this version:**

Francesco Nappi, Francesca Bellomo, Pierluigi Nappi, Camilla Chello, Adelaide Iervolino, et al.. The Use of Radial Artery for CABG: An Update. BioMed Research International , 2021, 2021, pp.5528006. <10.1155/2021/5528006>. <hal-03229688>

HAL Id: hal-03229688

<https://hal.sorbonne-universite.fr/hal-03229688v1>

Submitted on 19 May 2021

HAL is a multi-disciplinary open access archive for the deposit and dissemination of scientific research documents, whether they are published or not. The documents may come from teaching and research institutions in France or abroad, or from public or private research centers.




L'archive ouverte pluridisciplinaire HAL, est destinée au dépôt et à la diffusion de documents scientifiques de niveau recherche, publiés ou non, émanant des établissements d'enseignement et de recherche français ou étrangers, des laboratoires publics ou privés.



HAL Authorization

Review Article

The Use of Radial Artery for CABG: An Update

Francesco Nappi ¹, **Francesca Bellomo**,² **Pierluigi Nappi**,² **Camilla Chello** ³,
Adelaide Iervolino,⁴ **Massimo Chello** ⁵, and **Christophe Acar**⁶

¹Department of Cardiac Surgery, Centre Cardiologique du Nord de Saint-Denis, Paris, France

²Department of Clinical and Experimental Medicine, University of Messina, Italy

³Regenerative Medicine, Università Campus Bio-Medico di Roma, 00128 Rome, Italy

⁴Department of Cardiovascular Sciences, Fondazione Policlinico Universitario A. Gemelli IRCSS, Italy

⁵Cardiovascular Surgery, Università Campus Bio-Medico di Roma, 00128 Rome, Italy

⁶Department of Cardiac Surgery, La Pitié Salpêtrière Hospital, Paris, France

Correspondence should be addressed to Francesco Nappi; francesconappi2@gmail.com

Received 26 February 2021; Revised 21 March 2021; Accepted 26 March 2021; Published 8 April 2021

Academic Editor: Luca Liberale

Copyright © 2021 Francesco Nappi et al. This is an open access article distributed under the Creative Commons Attribution License, which permits unrestricted use, distribution, and reproduction in any medium, provided the original work is properly cited.

We used the radial artery as a second target conduit for coronary artery bypass grafting since 1971. However, randomized clinical studies have demonstrated differences in clinical outcomes between the radial artery and other grafts because these trials are underpowered. As we proceed toward 50 years of experience with radial artery grafting, we examined the literature to define the best second-best target vessel for coronary artery bypass grafting. The literature was reviewed with emphasis, and a large number of randomized controlled trials, propensity-matched observational series, and meta-analyses were identified with a large patient population who received arterial conduit and saphenous vein grafts. The radial artery has been shown to be effective and safe when used as a second target conduit for coronary artery bypass grafting. Results and patency rates were superior to those for saphenous vein grafting. It has also been shown that the radial artery is a safe and effective graft as a third conduit into the territory of the artery right coronary artery. However, there is little evidence based on a few comparable series limiting the use of the gastroepiploic artery. In its fifth decade of use, we can finally deduced that the aorto-to-coronary radial bypass graft is the conduit of choice for coronary operations after the left internal thoracic artery to the left anterior descending artery.

1. Introduction and a Historical Note

We pioneered the use of the radial artery as a graft in coronary artery bypass surgery (CABG) with a single-center series of 910 radial arteries implanted since 1971 [1–6]. Concerns regarding the long-term effectiveness of saphenous-vein grafts (SVG) in coronary-artery bypass surgery have led to numerous debates regarding the conduit of choice in CABG, including bilateral versus single internal-thoracic-artery grafts (LITA) or the radial artery (RA) [7–15]. Based on the current evidence, the LITA remains the prime conduit for its favorable long-term outcomes especially in patients less than 70 years of age without diabetes, indisputably consolidating its role of first-choice graft. A monolithic statement persists: LITA-to-LAD is the single best, possibly the

only, important graft in coronary surgery [7, 16–18]. However, the 2017 and 2018 ESC/ESCTS guidelines for CABG have categorized the RA as Class 1A [19], definitively asserting this conduit as the second target conduit for CABG [19–21] (Figure 1).

Since its first use in 1971, the use of RA as a conduit for CABG endured some opposition, unlike the saphenous vein grafts. One-third of recipients in the first series experienced graft occlusion. This prompted Carpentier to proclaim that RA should no longer be used as a graft until this physiological problem was resolved. He suggested that occlusion of this arterial conduit was due to spasm of the denervated vessel [2]. A favorable evolution occurred in 1989 when Carpentier received an angiographic follow-up of a patient operated 14 years earlier from a referring cardiologist demonstrating

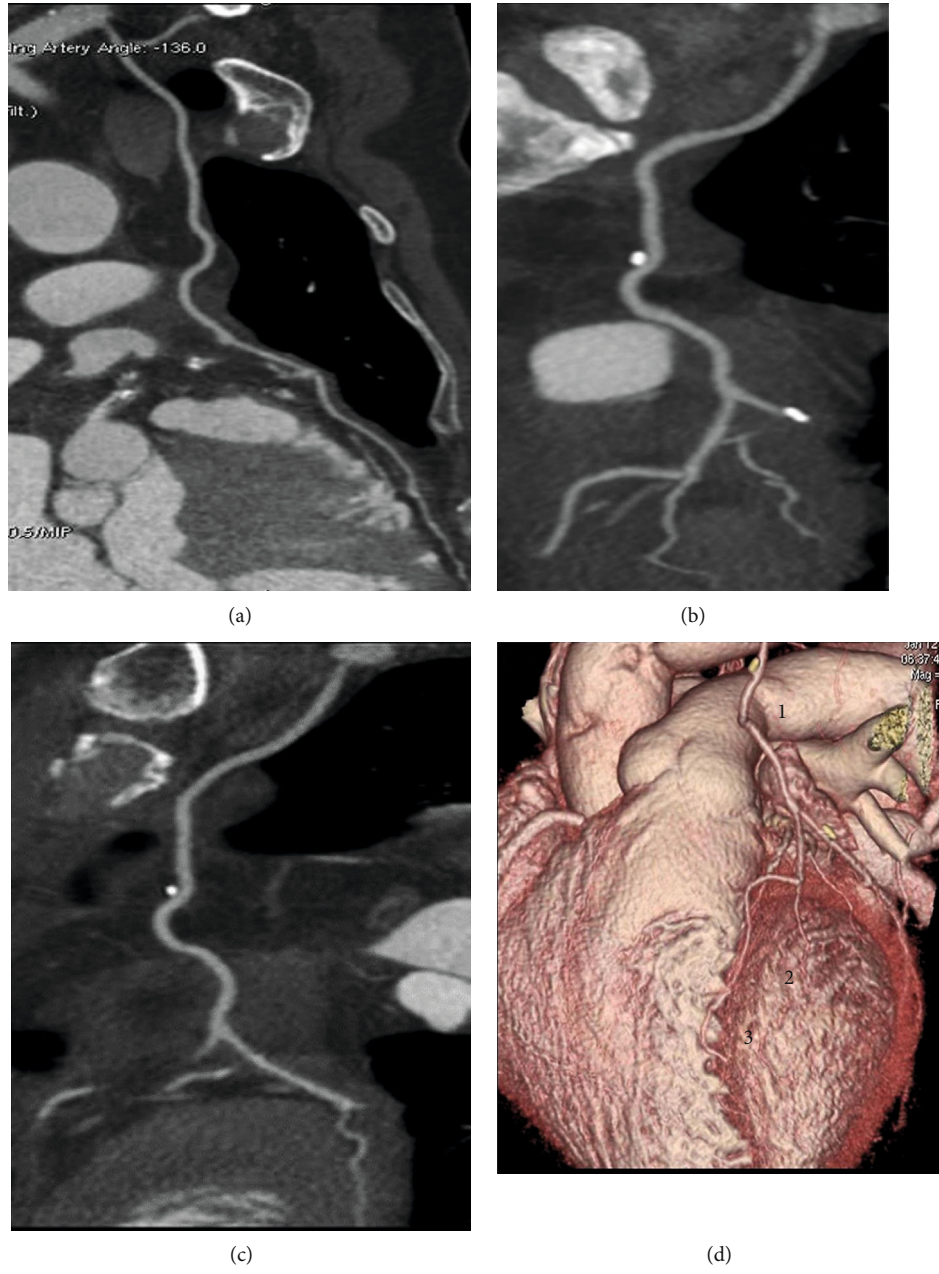


FIGURE 1: Continued.

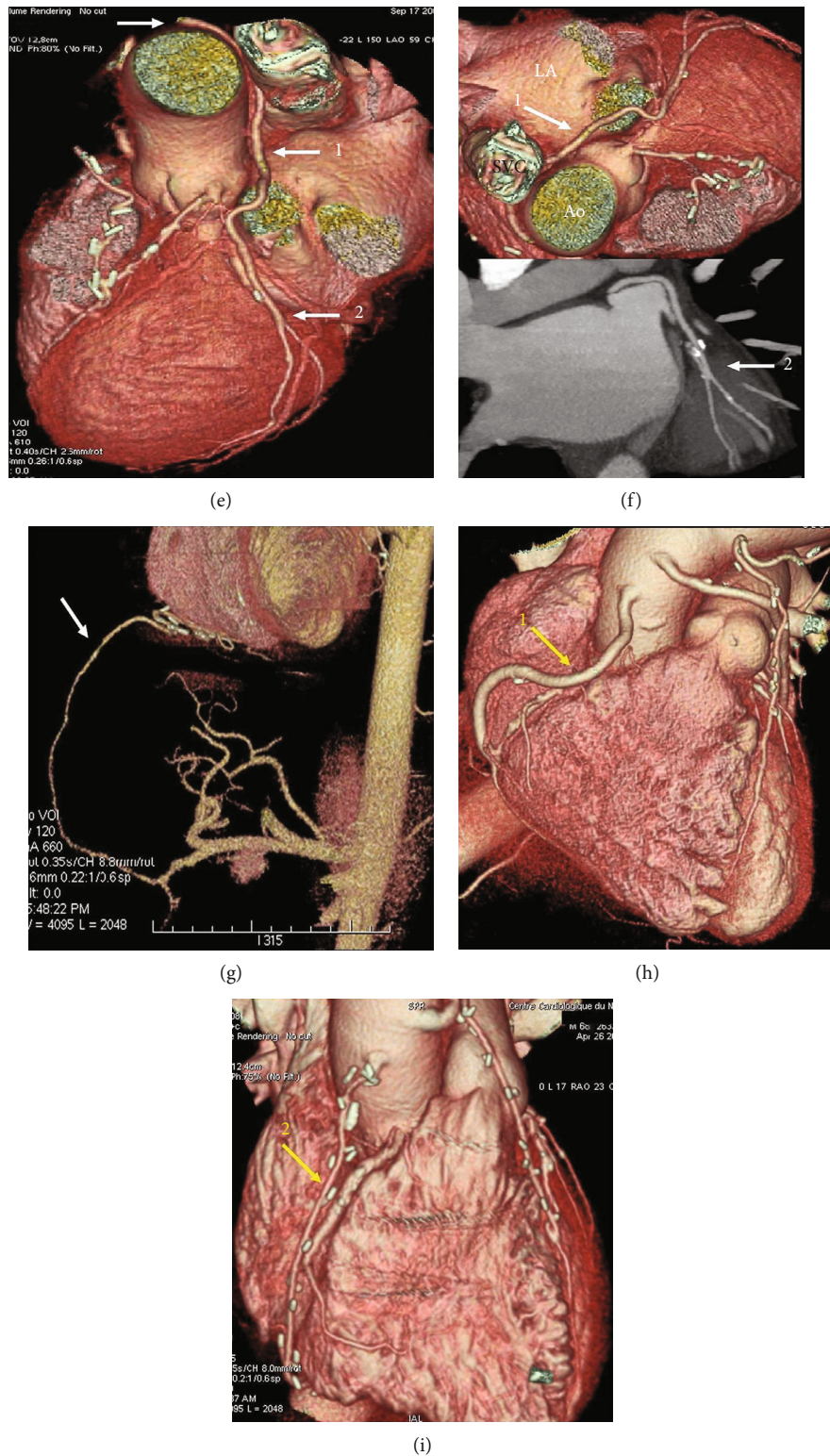


FIGURE 1: (a–i) Postprocessing of CT angiography of CABG by mean of volume rendering and 2D curved imaging with automatic tracking. (a–c) show 2D curved imaging of CABG with automatic tracking. (a) LITA anastomosed on LAD. (b) LITA sequential grafting on LAD and first diagonal branch. (c) RITA anastomosed on first obtuse branch. (d–i) Volume rendering imaging of CABG. (d) 1-LITA grafted on 2-Diag branch and 3-LAD. (e, f) RITA grafted on CCA. White arrow (1) RITA runs between the aorta and LA, (2) distal grafting on first obtuse branch. (g–i) Comparison between second target conduit on RCA. (g) White arrow gastroepiploic anastomosed to the PDA. (h, i) Yellow arrow (1) SVG and (2) RAG. Note that the venous graft size is greater than the arterial graft size. CABG: coronary artery bypass grafting; LITA: left internal thoracic artery; LAD: left anterior descending; RITA: right internal artery; CCA: circonflexe coronary artery; LA: left appendix; RCA: right coronary artery; PDA: posterior descending artery; SVG: saphen vein graft; RAG: radial artery graft.

perfect patency of RA anastomosed to the LAD with no evidence of graft disease. Five additional angiographic follow-ups of recipients grafted with RA conduits from the early 1970s showed a high patency rate, 13–18 years postoperatively. The preparation technique was revised by harvesting the RA “en bloc” with the satellite veins and administration of an antispasmodic drug (Diltiazem).

In our group, we followed Dr. Carpentier’s legacy continuing to adopt RA through forty-nine years of practice and the lessons learned on when not to use this conduit rather than how to use it [8–14].

2. When Not to Use the Radial Artery?

Many studies including large cohorts of patients have shown that the RA can safely be removed in all cases [22–26]. The variation of the palmar arches distribution has no impact whatsoever. The Allen test whose unreliability is noteworthy [25–27] should not be used. Its application has unnecessarily deprived many patients of the benefits of the radial artery graft (20–40%) [28, 29]. This however does not signify that the RA is a suitable graft in all situations. Contraindications for using the RA are not infrequent and usually are related to the anatomy of the RA itself rather than the variability of the vascular distribution to the upper limb. Appropriate selection of patients for use of RA and a systematic assessment by the surgeon of the contraindications for its use is critical to ensure positive outcomes and survival benefit in CABG.

Key factors to be considered in determining whether RA is indicated are anatomical variation, calcification of RA, and traumatic injury. In our experience, we have individuated the following contraindications.

2.1. Anatomical Difference. Anatomical variations of the RA are rare and usually involve the origin of the vessel from the brachial or axillary artery. An abnormality in its origin or variation in its course does not preclude the RA as a graft; conversely, it requires slight changes in the operative technique which are described below. The size of the RA is almost always perfectly matched with that of the coronary vessels. In exceptional cases especially in females (<0.5%), however, severe hypogenesis of the RA (defined as an RA diameter < 1.5 mm despite spasm release maneuvers) can be encountered and constitutes a contraindication. It is then probably preferable to use a saphenous vein as the internal mammary arteries are usually also undersized.

2.1.1. High Birth. The RA commonly originates from the brachial artery in the elbow region, underneath the brachioradialis muscle. Occasionally (4%) [30], it arises more proximally in the midpart of the arm or in the axillary region. The RA then passes superficially in the forearm and lies anterior to the brachioradialis muscle. In high origin cases, it is preferable not to extend the dissection of the radial conduit above the elbow joint.

2.1.2. High Termination. The RA terminates at the level of the wrist joint into a superficial branch that runs at the anterior aspect of the hand and a deep branch that curves posteriorly to the dorsal aspect of the scaphoid bone which supplies the

superficial and deep palmar arches, respectively. Rarely (1%), a high RA termination at the midpart of the forearm is observed [30]. In this situation, the RA can be used for coronary grafting together with its branches naturally arranged in a Y-fashion [31, 32] if the diameter of these branches is large enough. In some cases, the deep branch of the RA follows an aberrant route. It curves externally and passes around the external border of the forearm to run at the dorsal aspect of the wrist.

2.1.3. Calcification of the RA. Atheromatous involvement of the RA is more frequent than the internal mammary artery with a rate of 6% [33] in patients undergoing coronary surgery. These are definite contraindications for RA grafting. However, proximal lesions are not infrequent. When left subclavian artery stenosis is present (up to 2% of patients undergoing coronary surgery) [34], the internal mammary artery flow can be jeopardized, and endovascular stenting may be indicated prior to arterial grafting [34]. In other cases, with proximal upper limb artery obstruction (Figure 2(a)), RA usage is not advised.

In patients with severe diabetes mellitus, the RA can occasionally be the site of medial calcinosis (i.e., nonobstructive calcification of the RA wall) (Figure 2(b)) [35]. The same is true for patients with phosphate/calcium metabolism disorders as in severe renal insufficiency. Furthermore, these patients may require an arteriovenous fistula for chronic hemodialysis; hence, removal of the RA is not recommended. In patients with multifocal atherosclerosis, atheromatous stenosis and occasionally thrombosis of the RA can occur (Figure 2(c)). Angiographic radial artery stenosis was detected in 1.7% of cases in one study [35]. Among patients requiring coronary bypass grafting, the incidence of macroscopic RA calcification is approximately 6% [33, 34]. The ulnar artery is then usually calcified as well. Histological studies have found evidence of microscopic calcification in up to 13% of the cases [36]. Not surprisingly, age as well as classical risk factors for atheroma formation have been identified as determinants of RA calcification [33, 35]. The proximal portion of the RA lying underneath the brachioradialis muscle is less frequently affected by the calcification process [35]. Calcification of the vessel wall, mild or moderate, precludes the use of the RA.

2.1.4. Posttraumatic Radial Artery Injury. The main causes of traumatic injury to the RA are iatrogenic. Focal fibrosis or dissection of the distal portion of the vessel can be observed in patients who have undergone prior arterial punctures either for blood gas sampling or catheterization of the RA for pressure monitoring. Here, the proximal part of the RA is usually spared and can be used for coronary bypass grafting. Conversely, transradial angiography, which is increasingly popular among cardiologists, is a contraindication for RA grafting. Control angiograms have shown a decreased early patency of RA grafts also used for transradial angiography [36]. This approach implies catheterization of the whole conduit with both a guide wire and a coronary catheter. Radial artery spasm frequently occurs, and shearing stress caused by retrograde progression of the material into a collapsed vessel can produce intimal damage [36, 37]. Percutaneous coronary interventions which require insertion of even

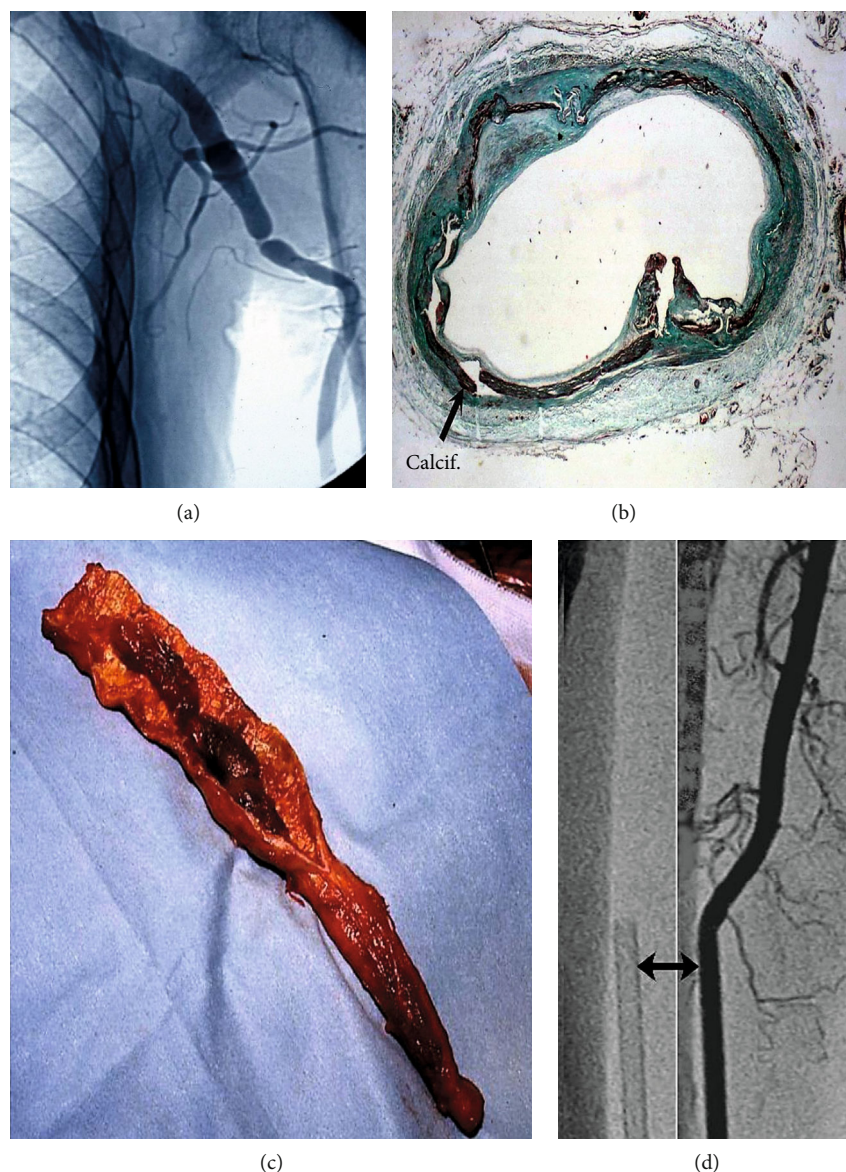


FIGURE 2: (a) Asymptomatic brachial artery occlusion fortuitously discovered on a postoperative coronary angiogram in a patient having undergone radial artery grafting. This case belongs to the early series. Nowadays, preoperative echo-Doppler of the upper-limb would have revealed the lesion, and RA would not have been used. (b, c) Media calcinosis of the radial artery. (b) Nonobstructive mediocalcinosis in a diabetic patient; (c) atheromatous occlusion with intraluminal thrombus. (d) Traumatic injury for transradial artery coronary intervention. Note that the size of the sheath (arrow) equals that of the vessel lumen.

larger sheaths can provoke devastating injuries with dissection for secondary radial arterial catheterization (Figure 2(d)). Although the vessel usually remains patent, it should not be used for coronary surgery. Fortunately, transradial angiography is most frequently performed at the right forearm, and the RA of the opposite side is then usually available for coronary grafting. The other causes of forearm trauma (wound or bone fractures) very rarely involve the radial artery.

3. What to Do When It Fails and How to Prevent It

3.1. RA Patency. While routine control angiograms were common practice in the early period of RA grafting [4, 7],

in the past decade, guidelines have changed our policy for evaluating graft function. Currently, only patients with evidence of myocardial ischemia undergo conventional angiography. The less invasive option of CT angiography can be used in asymptomatic patients and the elderly. It is a good screening tool for assessing graft patency [38, 39], and this method was widely applied to assess long-term RA patency (Figures 3(a)–3(f)) [5]. We reported three distinct angiographic studies to evaluate 1-year, 5-year, and long-term (beyond 5 years and up to 20 years) outcomes [4–6]. We demonstrated that RA patency was 100%, 93%, 83%, and 83% at one month, 1 year, 5 years, and 10 years, respectively [4–6]. RA graft occlusion did not necessarily lead to the return of angina [7]. In fact, we noted that two-thirds of

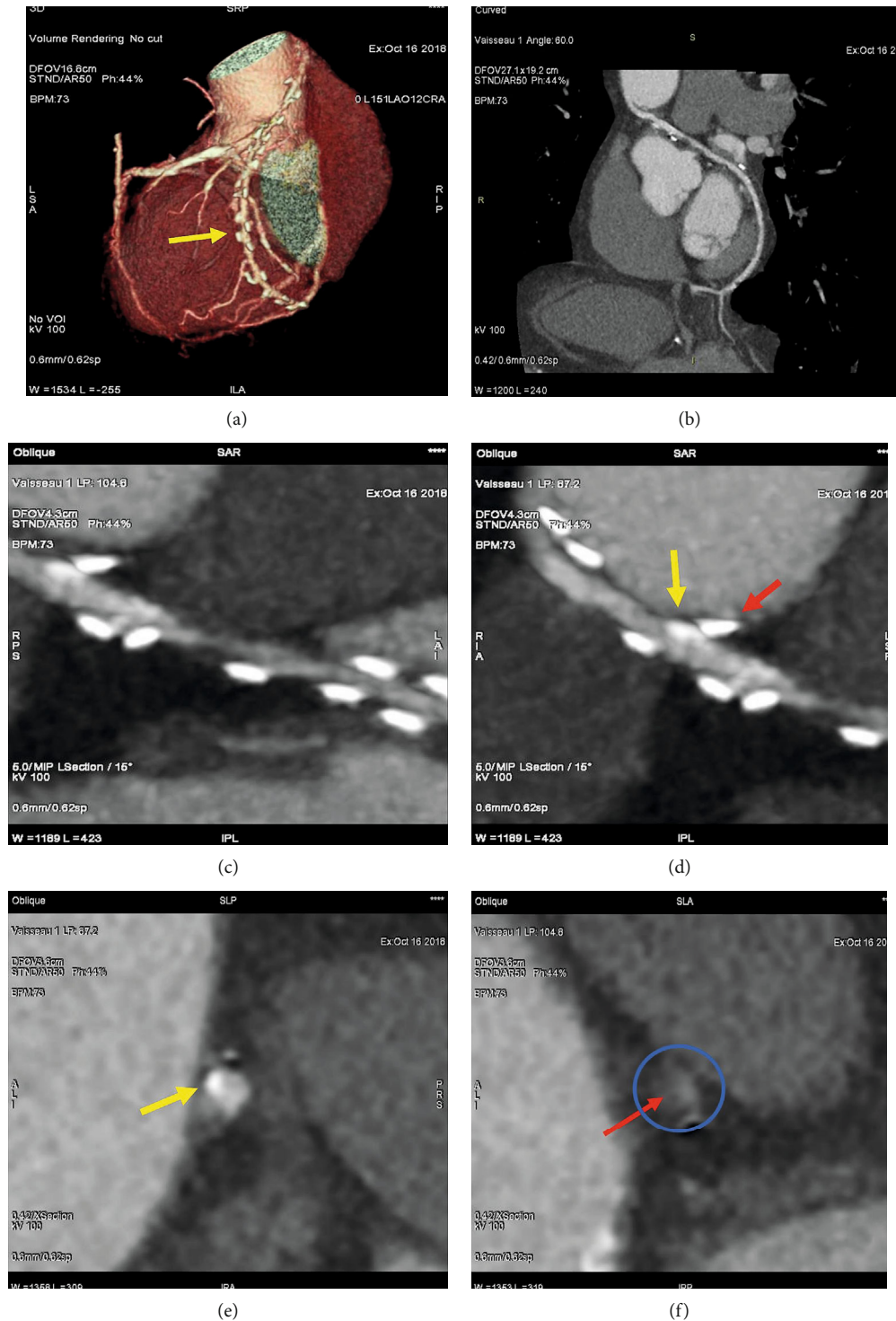


FIGURE 3: (a–f) CT angiographic control of RA used as second target conduit on second obtuse branch of LCC and PDA. (a) Volume rendering imaging of RA (yellow arrow) running at the level of Theil sinus transversus. (b–f) 2D curved imaging. (b) Course of the radial artery; (c) stenosis of the body of the RA graft. (d) Red arrow shows the metallic clip while yellow arrow highlights a fibrous plaque that are contiguous. (e) Yellow arrow shows a calcific plaque of RA conduit. (f) Note in the blue circle the stenosis of RA due to a fibrous plaque; red arrow shows a remodeling plaque. (LCC2). RA: radial artery; LCC: left coronary circumflex; LCC1: first obtuse branch; LCC2: second obtuse branch; RCA: right coronary artery.

patients with an occluded RA graft persisted clinically asymptomatic in the long term. EKG stress test or scintigraphy frequently is lacking in efficacy to show myocardial

ischemia in these patients [5, 6]. Other angiographic studies established that almost all RA grafts remain patent when controlled early in the postoperative period [40, 41] and that

some attrition occurred during the first postoperative year (patency: 90-93%) [42, 43]. When compared to our series, similar or slightly higher patency rates have been reported at intermediate-term follow-up: 95%, 89%, and 88% at 4 years [44], 5 years [45], and 8 years respectively [8].

In our group [6], all serial angiographic controls collected over 20 years were analyzed. Out of 563 patients, half received at least one coronary angiography. A total of 1427 coronary bypass grafts including 629 RA conduits were evaluated. The angiograms were divided into four uniform arms at different time intervals, and we observed that most RA occlusions occurred within the first 6 months. Evidence showed later than one year radial artery graft patency was significantly stable with virtually no attrition for up to 20 years [6].

3.2. String Sign. String sign is defined as a spread narrowing of the entire graft unresponsive to in situ vasodilators. It is normally observed on early surveillance angiograms and concerns approximately 7% of RA grafts within the first postoperative year [42, 46, 47]. Graft involution is likely to result from the competitive flow as shown in several studies, and stress tests might enhance ischemia in the territorial distribution of RAs with string sign [46–48]. Some have suggested that the string sign could be triggered by the use of alpha-adrenergic agents in the perioperative period [47]. Reversal of RA string sign is very rare [49]; these grafts are nonfunctional and should be classified as occluded.

3.3. RA Stenosis. Angiographic failure of RA graft occurs more frequently as a complete occlusion and less often a string-like appearance. However, occasionally, focal stenosis of the RA graft has been documented [50]. We reported 6% of RA grafts that were stenosed on subsequent surveillance angiography at 20-year experience [51]. Stenosis was sometimes located at the proximal or distal anastomosis: inadequate surgical technique or intimal hyperplasia could then be implicated. More often, stenosis involved the body of the RA graft (Figures 3(a)–3(d)). Spasm refractory to vasodilators in situ may be difficult to formally rule out. If detected very prematurely in the postoperative time, the stenosis can be handled by balloon dilatation without stenting [50]. However, if discovered later, the stenosis is inclined to manifest organic degeneration. Some narrowing of the RA at the forearm prior to surgery can also be suspected. RA stenosis could also result from an atheromatous plaque that had been overlooked at the time of surgery. As another option, it could be associated to fibrosis secondary to arterial trauma due to poor harvesting technique or to previous catheterization. Indeed, it is not unusual transradial angiography frequently provokes intimal disruption and/or medial dissection [51]. Therefore, RA stenosis occurred secondarily as clearly identified in some controls where the graft was found perfectly intact on a previous angiogram [50]. It is not unlikely that these grafts had been the place of minor parietal lesion that finally evolved into hemodynamic stenosis. Hence, RA graft stenosis can be anticipated by systematic preoperative echo-Doppler screening and exclusion of all calcified RAs as well as previously catheterized conduits. Radial artery graft steno-

sis can be safely managed with PCI and stents, thus delivering lasting results [50, 52]. The percutaneous procedure for the treatment of vein graft disease continues to be hampered by high periprocedural morbidity resulting from distal embolization of atherothrombotic debris.

4. Determinants of RA Patency

4.1. Symptoms. Most angiographic studies are directed by symptoms and do not accurately reflect true graft patency. The incidence of graft occlusion is approximately doubled when the indication for angiography is based on evidence of myocardial ischemia [53]. The same is true for the RA graft; whereby, the occlusion rate at 7 years is 12% in asymptomatic patients versus 26% in patients with clinical or electrocardiogram/scintigraphic signs of ischemia [6].

4.2. Target Coronary Artery. The target coronary artery is a powerful determinant of patency irrespective of the type of graft whether venous [6] or arterial [54]. Conduits implanted on the left anterior descending coronary artery whose large run-off includes the perforators have the highest patency rate followed by the diagonal and the obtuse marginal branches of the left coronary artery. The right coronary artery has the lowest patency rate due to its territory, mostly limited to the thin right ventricular myocardium [6, 54]. Likewise, the patency of radial artery conduits is directly influenced by the size of the target coronary [46, 47, 53, 55, 56]. RA graft patency for targets on the right coronary artery is statistically inferior to that for targets of the left anterior descending artery. There is also a nonsignificant trend when used in the circumflex artery distribution [57]. In our experience, the number of RA grafts anastomosed to the LAD was too small to allow a proper statistical analysis, but for the other targets, the 7-year patency of RA grafts decreased to 92%, 82%, and 78% for the diagonal, the obtuse marginal, and the right coronary artery, respectively [6].

4.3. Competitive Flow. Competitive flow has been recognized as one of the main causes of RA graft failure. Anastomotic patency for targets with moderate stenosis is worse than that for vessels with critical stenosis [4, 45, 56–58]. However, the degree of stenosis labelled as “critical” is a matter of controversy: 70% or 90% according to the authors [59]. In the study by Maniar, the mean degree of stenosis for patent anastomoses was 82% compared with 71% for occluded anastomoses which seems to indicate that the critical range below which flow competition occurs is in between those two values [57].

When combined with valve surgery, the indication for coronary bypass often relies on the detection of coronary stenosis by routine preoperative angiography rather than on the evidence of myocardial ischemia. The risk of grafting a coronary artery bearing a low-grade stenosis resulting in competitive flow is then higher, and the RA graft occlusion rate is increased [56]. Likewise, others have demonstrated that RA graft occlusion occurred more frequently in patients with no/minimal preoperative angina [6].

Coronary bypass for proximal left main stenosis is also at risk for competitive flow. The obtuse marginal RA graft is

vulnerable due to unrestricted backflow from the LITA-to-LAD graft towards the circumflex network [60]. Abundant collateral circulation can also compete with the flow from a graft anastomosed to a chronically occluded coronary artery [60].

4.4. Sequential Grafting. Sequential grafting is known to improve patency due to the increased distal run-off. Sequential RA conduits have an increased patency compared to grafts with single anastomosis (91% versus 82% at 7 years) [6]. Occasionally, the proximal or the distal end of the graft remains patent whereas the rest of the graft is nonfunctional (string/occlusion) [5, 60].

5. RA versus Right Internal Thoracic Artery

The RA provides several benefits over the right internal thoracic artery (RITA); it is an adaptable conduit in which its diameter and length makes it suitable for all coronary targets, even when used for the most distal. It can also be collected at the same time as the LITA, thus reducing operating times. At most, the limitation to the use of the radial artery graft is the possible atheromatous involvement of the vascular structure which is more recurrent than LITA.

The clinical benefits of using RA rather than RITA to integrate IMA to LAD graft from the left were initially evaluated by Borger [61]. It is important to note that patients included in the AR group were older and had a greater number of multiple risk factors such as low ejection fraction, diabetes, and NYHA class; however, a lower incidence of perioperative myocardial infarction than in the RITA group was observed. Evidence therefore demonstrated that the use of the RA as conduit for CABG offered better protection against cardiac death and other cardiac events such as myocardial infarction, readmission, and repeated revascularization, compared to that of RITA conduit during the three-year study period [61]. The limitation of this publication, as of others in the literature, reflects the experience of a single center, and its conclusions remain the subject of debate [62–65]. The use of the radial artery confers the advantage of also reducing wound complications compared to bilateral collection of the ITA, so the selection of this conduit as a second graft to be associated with the LITA remains a valuable option [66–69].

RA and RITA were only compared in the RAPCO (Radial Artery Patency and Clinical Outcomes) randomized trial. The study reported no differences in patency rates between the two conduit and a nonsignificant trend towards better event-free survival for RA at 6-year follow-up [70]. Evidence based on follow-up from retrospective cohort studies addressing the difference between graft patency and composite cardiac endpoints, including rehospitalization rate, is conflicting and usually related to key methodological or sample size limitations [61, 62, 71]. One comparative meta-analysis with clinical endpoints reported comparable mortality; however, a lower incidence of cardiac events, such as myocardial infarction, heart failure, and ischemia, for the RA was noted (RR: 0.49; 95% CI: 0.28 to 0.87; $P = 0.014$) [64]. Moreover, a meta-analysis of comparative network of angiographic studies revealed that the use of RITA conduit resulted in a

nonsignificant 27% lowering of absolute risk for late functional graft occlusion compared to RA graft [68]. It should be noted that the results published in a large meta-analysis of 149,902 patients differ, reporting a substantial equivalence in which both conduits (RA and RITA) that were associated with a similar and statistically significant long-term clinical benefit compared to saphen vein [66].

6. RA versus Other Grafts

6.1. RA versus Vein. In the early postoperative months, graft failure is unlikely to be related to intimal hyperplasia. Instead, immediate graft thrombosis is a recurrent mechanism. As compared to saphenous vein, RA is probably less prone to thrombosis for its superior hemodynamic characteristics [40, 72–74].

Its diameter is only 20% larger than the target vessel allowing a suitable proportions match with the coronary arteries [40]. In addition, this RA is available without valves and its caliber is analogous throughout its progress, with at most a slight decrease in diameter from the proximal to the distal end. Conversely, the diameter of the vein is 50% larger than that of the target coronary artery [40], which often leads to a notable difference. Furthermore, the saphenous vein lumen contains valves and its diameter is inconstant with variation at the level of collateral branches. The diameter of the vein increases from the proximal to the distal end. These relatively adverse hemodynamic features account for a greater thrombosis rate as compared to the RA graft.

Seven RCTs [9–14, 75, 76] have compared the use of RA with saphenous vein graft (SVG) for CABG operation. Extending the follow-up beyond the first postoperative year results in significantly better patency rates for the patients who received the RA compared to that who were managed with the SVG [8]. Two studies reported a lower incidence of clinical events in RA recipients [8]. The randomized trial (Radial Artery Patency Study, RAPS) as well as meta-analyses and observational studies revealed that patients who had the use of radial artery were strongly protected against graft occlusion over 1 year when compared to those who received saphenous vein graft [8, 9, 13, 71, 75, 76]. Radial artery graft occlusion at 1 year occurs in similar proportions in both men and women, whereas, the saphenous vein graft occlusion rate for women is increased twofold when compared to men [77]. Radial artery patency at 1 year is higher in both diabetic and nondiabetic patients compared to vein grafts [8, 78]. A randomized angiographic study one year after total arterial revascularization however failed to detect a difference in graft patency compared to conventional single IMA with veins grafting (Copenhagen Arterial Revascularization Randomized Patency and Outcome trial, CARRPO) [79].

Saphenous veins are affected by an evolving graft disease accountable for increasing intimal hyperplasia, calcification of the vessel wall, and intraluminal conglomerate of atheromatous debris. At 10 years, only 60% of vein grafts are still patent, and among them, half an atheromatic process occurs in their vessel wall structure [80, 81]. In comparison, 10-year patency rate of RA grafts exceeds 80% in all long-term studies

[53, 58] and the RA is virtually free from graft disease [5, 53]. Radial artery versus Saphenous Vein Patency (RSVP) randomized clinical trial revealed that radial artery grafts used on a stenosed branch of the circumflex coronary artery have significantly better patency rate at 5 years than the saphenous vein grafts [9]. Likewise, RA graft patency at 5 years is superior to venous grafts among patients who previously developed in-stent restenosis [78]. Nevertheless, the RAPCO trial which comprised patients >70 years old failed to demonstrate an improved patency in patients who received CABG operation using arterial grafts, with comparable angiographic outcomes at 6-year follow-up, between RA or a vein graft to the largest non-LAD target [82]. Goldman et al. highlighted no differences in death ($P = 0.61$), patency ($P = 0.82$), and composite end point ($P = 0.31$) at 1-year follow-up [14].

Results from a patient-level combined analysis of randomized trials [8] reported a significant interaction between age and the treatment effect on major adverse cardiac events ($P = 0.04$). The age of 75 years was noted as the inflection point; whereby, the radial artery graft is less beneficial. The interaction term analysis revealed a greater benefit in major adverse cardiac event rates with radial-artery grafts than with saphenous-vein grafts in patients younger than 75 years of age ($P = 0.008$), in women ($P = 0.01$), and in patients without renal insufficiency ($P = 0.02$). Diabetes ($P = 0.35$), reduced left ventricular ejection fraction (<35%) ($P = 0.37$), and previous myocardial infarction ($P = 0.45$) did not alter the treatment effect. The target vessel of RA grafting did not significantly affect the treatment effect ($P = 0.42$). Age was an independent predictor of radial-artery-graft occlusion but not saphenous vein graft occlusion. Female sex was associated with a lower risk of radial-artery-graft occlusion and higher risk of saphenous-vein graft occlusion. Long-term use of calcium channel antagonist therapy was combined with a significantly lower risk of radial artery-graft occlusion.

Recently, Royce et al. [15] report a series of 998 unmatched patients at 21-Year survival who received Left Internal Thoracic Artery–Radial Artery anastomosed on a Y graft ($n = 464$) compared to that who were treated with LITA on LAD and SVG. The authors used a 1:1 propensity score matching analysis (PMS) to obtain two homogeneous group of 232 pairs. Results revealed an improvement of survival for recipients receiving LITA-RA-Y at up to 21 years (KM, $P < 0.001$) compared to LITA on LAD and SVG as second target vessel for unmatched groups and for PSM groups (KM, $P = 0.043$; HR: 1.3; 95% CI: 1.0 to 1.6; $P = 0.038$). There was no significant difference in survival of the LITA-RA-Y patients compared to other total arterial bypass patients (unmatched and the PSM groups) [15].

7. RA versus ITA

Most series reported that the patency rate of the RA graft was lower than that of the LITA graft [3–6, 83–85]. In addition to the type of conduit examined, the interpretation of angiographic data must take into account other determinants of graft failure in order to establish a correct assessment. The patency of the LITA is affected by the size of the target vessel with a lower patency for the right coronary target anastomo-

sis and the highest for grafts placed on the LAD [55]. LITA grafts are also vulnerable to competitive flow with a fourfold increase in graft occlusion rate for vessels with <60% stenosis compared to vessels with 80% stenosis [86, 87]. The patency of the LITA graft was identical to that of the RA grafts at the 5-year follow-up in several studies reporting grafts performed on similar target vessels [3–6, 58, 82].

8. RA versus Gastroepiploic Artery

Landmark papers that reported the systematic use of the Gastroepiploic Artery (GEA) conduit for CABG grafting were published by Pym et al. [88] and Suma et al. [89] more than thirty years ago. After initial experiences, the use of GEA grafts have been widely increased. The rate of candidates for a CABG operation who have contraindications to harvesting of GEA is poor. The GEA showed a low incidence of developing severe atherosclerotic degeneration [90] as well as having a good load of flow [91]. In these years, the knowledge on the biological and physiological depiction of the GEA has improved [92], and it is known that the use of this conduit does not increase the rate of postoperative complications [93].

The preferred in situ GEA graft is the distal right coronary artery although the conduit can also be used for grafting on branches of the circumflex artery. It is preferable to graft the GEA in the presence of a subocclusive stenosis (>90%) of the coronary artery in order to maximize the efficacy of flow and avoid a possible failure related to long-standing competitive coronary flow.

Suma et al. reported in patients who received the GEA graft a cumulative patency rate of 97.1% at 1 month, 92.3% at 1 year, 85.5% at 5 years, and 80.9% and 66.5% at 10 years after CABG operation. These not excellent results with evident relatively low patency rates led to a modification of the harvesting technique. Suzuki et al. using skeletonized GEA grafts only for target vessels with stenosis >90% reported considerably better long-term outcomes (90.2% at 8 years) [94].

Very limited studies are available regarding the safety and effectiveness on the use of GEA compared to the RA second target conduit for coronary artery bypass grafting [67, 95, 96]. Without a doubt, we can say that the usual target of RA and GEA during CABG is the right coronary artery, and they are associated with similar and statistically significant long-term clinical benefits compared to SVG when grafted onto the right coronary artery [66].

However, some points deserve clarifications. First, surgical preference usually dictates the choice of conduit between RA and GEA. Second, it should be noted that a subocclusive (>90%) stenosis of the target coronary artery is crucial for obtaining long-term patency rates. Severe stenosis avoids spasm and eventual failure due to chronic competition of coronary flow. Third, the GEA is often used as an in situ graft at level of the distal RCA [66, 97]. Finally, the use as a conduit for the circumflex system however is limited because of the short graft length compared to the RA, making it a less-attractive option.

9. Final Considerations

The consensus on the use of RA as a graft for the second target vessel is not shared unanimously, although the contraindications to the use of RA are scarce. A report from the analysis of STS (Society of Thoracic Surgeons) database revealed that less than 5% of CABG patients received a RA as a second arterial conduit. This trend should be reversed. Randomized clinical trials have worked to facilitate this trend reversal [8, 18, 19] involving many cardiac surgeons in Europe [8, 9, 12] and Australia [10, 11, 15]. If the community has been initially highly reluctant towards RA, the recent evidence promoted a progressive softening of the attitude towards its use as a second arterial conduit.

The results from the current randomized trials on arterial revascularization are still raising contradiction and did not reach a definitive answer on this long-standing debate [7]. The addition of the radial artery as both stand-alone and composite graft (LITA-TA in Y fashion) as shown by Royce et al. [41] is increasingly acquiring more and more consensus [8]. We observed the benefits of RA as a second arterial graft even when it was used in high-risk patients, such as those with reduced ventricular function [98] or unstable angina (freedom from cardiac death at 15 years was 89%) [5, 6]. Furthermore, the location of second RA conduit performed for sequential anastomosis does not impact the late survival benefit, as we demonstrated in our series in 910 patients since 1989 [3, 4] and in more recent reports where 52/57 patients had RA full patency of sequential anastomosis at 9.8 year (91.2% $P = 0.08$) [5, 6].

We have successfully used RA as the first target conduit for coronary artery bypass grafting in patients with myocardial infarction and ischemic mitral regurgitation who had an occluded right coronary artery or an occluded circumflex artery [98–100]. CABG operation with the use of RA was associated with restrictive mitral annuloplasty coupled to papillary muscle approximation in a large percentage of patients [99–102]. In cases of asymmetric tethering with marked distortion of the left ventricle, related by an extensive inferobasal scar, myocardial revascularization using the RA was associated with a restrictive mitral annuloplasty performed using a double row overlapping suture [103].

A dogmatic prejudice on the operative technical challenge together with the influence of the feared financial implications related to sternal wound infection has long limited the use of BITA grafts. It can be perceived that this attitude has been unjustly extending to the RA during the debate on total arterial revascularization, despite the number of favorable evidences published [8]. With over 49 years of experience, we can confidently say that the radial artery is an excellent second option graft for coronary artery bypass surgery [104–107].

Although very long-term evaluation of patients from the early seventies series has revealed that one RA graft by De Oliveira [108] and five RA grafts by Carpentier [1] were fully patent at 23-year follow-up, however, it is indisputable that the choice of the conduit to be used for CABG operation falls within the prerogative of each individual surgeon.

Conflicts of Interest

All authors declare no conflicts of interest.

References

- [1] A. Carpentier, J. L. Guermonprez, A. Deloche, C. Frechette, and C. DuBost, "The aorta-to-coronary radial artery bypass graft: a technique avoiding pathological changes in grafts," *The Annals of Thoracic Surgery*, vol. 16, no. 2, pp. 111–121, 1973.
- [2] A. S. Geha, R. J. Krone, J. R. McCormick, and A. E. Baue, "Selection of coronary bypass: Anatomic, physiological, and angiographic considerations of vein and mammary artery grafts," *The Journal of Thoracic and Cardiovascular Surgery*, vol. 70, no. 3, pp. 414–431, 1975.
- [3] C. Acar, V. A. Jebara, M. Portoghesi et al., "Revival of the radial artery for coronary artery bypass grafting," *The Annals of Thoracic Surgery*, vol. 54, no. 4, pp. 652–660, 1992.
- [4] C. Acar, A. Ramsheyi, J.-Y. Pagny et al., "The radial artery for coronary artery bypass grafting: clinical and angiographic results at five years," *The Journal of Thoracic and Cardiovascular Surgery*, vol. 116, no. 6, pp. 981–989, 1998.
- [5] P. Achouh, R. Boutekadjirt, D. Toledano et al., "Long-term (5- to 20-year) patency of the radial artery for coronary bypass grafting," *The Journal of Thoracic and Cardiovascular Surgery*, vol. 140, no. 1, pp. 73–79.e2, 2010.
- [6] P. Achouh, K. O. Isselmou, R. Boutekadjirt et al., "Reappraisal of a 20-year experience with the radial artery as a conduit for coronary bypass grafting," *European Journal of Cardio-Thoracic Surgery*, vol. 41, no. 1, pp. 87–92, 2012.
- [7] D. P. Taggart, D. G. Altman, A. M. Gray et al., "Randomized trial of bilateral versus single internal-thoracic-artery grafts," *The New England Journal of Medicine*, vol. 375, no. 26, pp. 2540–2549, 2016.
- [8] M. Gaudino, U. Benedetto, S. Fremes et al., "Radial-artery or saphenous-vein grafts in coronary-artery bypass surgery," *The New England Journal of Medicine*, vol. 378, no. 22, pp. 2069–2077, 2018.
- [9] P. Collins, C. M. Webb, C. F. Chong, and N. E. Moat, "Radial artery versus saphenous vein patency randomized trial: five-year angiographic follow-up," *Circulation*, vol. 117, no. 22, pp. 2859–2864, 2008.
- [10] B. F. Buxton, J. S. Raman, P. Ruengsakulrach et al., "Radial artery patency and clinical outcomes: five-year interim results of a randomized trial," *The Journal of Thoracic and Cardiovascular Surgery*, vol. 125, no. 6, pp. 1363–1370, 2003.
- [11] A. G. Royse, A. P. Brennan, J. Ou-Young, Z. Pawanis, D. J. Canty, and C. F. Royse, "21-Year Survival of Left Internal Mammary Artery-Radial Artery-Y Graft," *Journal of the American College of Cardiology*, vol. 72, no. 12, pp. 1332–1340, 2018.
- [12] I. Petrovic, D. Nežić, M. Perić et al., "Radial artery vs saphenous vein graft used as the second conduit for surgical myocardial revascularization: long-term clinical follow-up," *Journal of Cardiothoracic Surgery*, vol. 10, no. 1, p. 127, 2015.
- [13] S. Deb, E. A. Cohen, S. K. Singh, D. Une, A. Laupacis, and S. E. Fremes, "Radial artery and saphenous vein patency more than 5 years after coronary artery bypass surgery: results from RAPS (Radial Artery Patency Study)," *Journal of the American College of Cardiology*, vol. 60, no. 1, pp. 28–35, 2012.

- [14] S. Goldman, G. K. Sethi, W. Holman et al., "Radial artery grafts vs saphenous vein grafts in coronary artery bypass surgery: a randomized trial," *JAMA*, vol. 305, no. 2, pp. 167–174, 2011.
- [15] M. Gaudino, P. Tondi, U. Benedetto et al., "Radial artery as a coronary artery bypass conduit: 20-year results," *J Am Coll Cardiol*, vol. 68, pp. 603–610, 2016.
- [16] F. Nappi, F. W. H. Sutherland, N. Al-Attar, and C. Spadaccio, "Incomplete revascularization in PCI and CABG: when two plus two does not make four," *Journal of the American College of Cardiology*, vol. 68, no. 8, pp. 877–878, 2016.
- [17] F. D. Loop, B. W. Lytle, D. M. Cosgrove et al., "Influence of the internal-mammary artery graft on 10-year survival and other cardiac events," *The New England Journal of Medicine*, vol. 314, no. 1, pp. 1–6, 1986.
- [18] B. W. Lytle, E. H. Blackstone, F. D. Loop et al., "Two internal thoracic artery grafts are better than one," *The Journal of Thoracic and Cardiovascular Surgery*, vol. 117, no. 5, pp. 855–872, 1999.
- [19] F.-J. Neumann, M. Sousa-Uva, A. Ahlsson et al., "2018 ESC/EACTS guidelines on myocardial revascularization," *European Heart Journal*, vol. 40, no. 2, pp. 87–165, 2019.
- [20] A. W. ElBardissi, S. F. Aranki, S. Sheng et al., "Trends in isolated coronary artery bypass grafting: an analysis of the Society of Thoracic Surgeons adult cardiac surgery database," *J Thorac Cardiovasc Surg*, vol. 143, pp. 273–281, 2012.
- [21] M. Sousa-Uva, M. Gaudino, T. Schwann et al., "Corrigendum to 'Radial artery as a conduit for coronary artery bypass grafting: a state-of-the-art primer' [Eur J Cardiothorac Surg 2018; 54:971–976]," *European Journal of Cardio-Thoracic Surgery*, vol. 55, no. 2, p. 382, 2019.
- [22] Y. Abu-Omar, S. Mussa, K. Anastasiadis, S. Steel, L. Hands, and D. P. Taggart, "Duplex ultrasonography predicts safety of radial artery harvest in the presence of an abnormal Allen test," *The Annals of Thoracic Surgery*, vol. 77, no. 1, pp. 116–119, 2004.
- [23] A. G. Royse, C. F. Royse, A. Maleskar, and A. Garg, "Harvest of the radial artery for coronary artery surgery preserves maximal blood flow of the forearm," *The Annals of Thoracic Surgery*, vol. 78, no. 2, pp. 539–542, 2004.
- [24] E. Rodriguez, M. L. Ormont, E. H. Lambert et al., "The role of preoperative radial artery ultrasound and digital plethysmography prior to coronary artery bypass grafting," *European Journal of Cardio-Thoracic Surgery*, vol. 19, no. 2, pp. 135–139, 2001.
- [25] Z. S. Meharwal and N. Trehan, "Functional status of the hand after radial artery harvesting: results in 3,977 cases," *The Annals of Thoracic Surgery*, vol. 72, no. 5, pp. 1557–1561, 2001.
- [26] M. A. Jarvis, C. L. Jarvis, P. R. M. Jones, and T. J. Spyt, "Reliability of Allen's test in selection of patients for radial artery harvest," *The Annals of Thoracic Surgery*, vol. 70, no. 4, pp. 1362–1365, 2000.
- [27] H.-S. Lee, B.-C. Chang, and Y. J. Heo, "Digital blood flow after radial artery harvest for coronary artery bypass grafting," *The Annals of Thoracic Surgery*, vol. 77, no. 6, pp. 2071–2074, 2004.
- [28] S. Manabe, N. Tabuchi, M. Toyama et al., "Oxygen pressure measurement during grip exercise reveals exercise intolerance after radial harvest," *The Annals of Thoracic Surgery*, vol. 77, no. 6, pp. 2066–2070, 2004.
- [29] S. L. Starnes, S. W. Wolk, R. M. Lampman et al., "Noninvasive evaluation of hand circulation before radial artery harvest for coronary artery bypass grafting," *The Journal of Thoracic and Cardiovascular Surgery*, vol. 117, no. 2, pp. 261–266, 1999.
- [30] T. S. Lo, J. Nolan, E. Fountzopoulos et al., "Radial artery anomaly and its influence on transradial coronary procedural outcome," *Heart*, vol. 95, no. 5, pp. 410–415, 2009.
- [31] M. H. Chamberlain and D. P. Taggart, "Bifurcating radial artery," *The Annals of Thoracic Surgery*, vol. 72, no. 4, p. 1399, 2001.
- [32] C. Muneretto, G. Bisleri, A. Negri et al., "Left internal thoracic artery–radial artery composite grafts as the technique of choice for myocardial revascularization in elderly patients: a prospective randomized evaluation," *The Journal of Thoracic and Cardiovascular Surgery*, vol. 127, no. 1, pp. 179–184, 2004.
- [33] M. Gaudino, P. Tondi, M. Serricchio et al., "Atherosclerotic involvement of the radial artery in patients with coronary artery disease and its relation with midterm radial artery graft patency and endothelial function," *The Journal of Thoracic and Cardiovascular Surgery*, vol. 126, no. 6, pp. 1968–1971, 2003.
- [34] B. L. de Almeida, A. M. Kambara, F. H. Rossi et al., "Left subclavian artery stenting: an option for the treatment of the coronary-subclavian steal syndrome," *Revista Brasileira de Cirurgia Cardiovascular*, vol. 29, no. 2, pp. 236–240, 2014.
- [35] U. K. Chowdhury, B. Airan, P. K. Mishra et al., "Histopathology and morphometry of radial artery conduits: basic study and clinical application," *The Annals of Thoracic Surgery*, vol. 78, no. 5, pp. 1614–1621, 2004.
- [36] H. Kamiya, T. Ushijima, T. Kanamori et al., "Use of the radial artery graft after transradial catheterization: is it suitable as a bypass conduit?," *The Annals of Thoracic Surgery*, vol. 76, no. 5, pp. 1505–1509, 2003.
- [37] C. S. Staniloae, K. P. Mody, K. Sanghvi et al., "Histopathologic changes of the radial artery wall secondary to transradial catheterization," *Vascular Health and Risk Management*, vol. 5, no. 3, pp. 527–532, 2009.
- [38] G. M. Feuchtner, A. Smekal, G. J. Friedrich et al., "High-resolution 16-MDCT evaluation of radial artery for potential use as coronary artery bypass graft: a feasibility study," *American Journal of Roentgenology*, vol. 185, no. 5, pp. 1289–1293, 2005.
- [39] D. Ropers, F. K. Pohle, A. Kuettner et al., "Diagnostic accuracy of non-invasive coronary angiography in patients after bypass surgery using 64-slice spiral computed tomography with 330-ms gantry rotation," *Circulation*, vol. 114, no. 22, pp. 2334–2341, 2006.
- [40] A. H. Chen, T. Nakao, R. F. Brodman et al., "Early postoperative angiographic assessment of radial artery grafts used for coronary artery bypass grafting," *The Journal of Thoracic and Cardiovascular Surgery*, vol. 111, no. 6, pp. 1208–1212, 1996.
- [41] O. Wendler, B. Hennen, S. Demertzis et al., "Complete arterial revascularization in multivessel coronary artery disease with 2 conduits (skeletonized grafts and T grafts)," *Circulation*, vol. 102, 19 Suppl 3, pp. III79–III83, 2000.
- [42] A. G. Royse, C. F. Royse, J. Tatoulis et al., "Postoperative radial artery angiography for coronary artery bypass surgery," *European Journal of Cardio-Thoracic Surgery*, vol. 17, no. 3, pp. 294–304, 2000.

- [43] J. Tatoulis, A. G. Royle, B. F. Buxton et al., "The radial artery in coronary surgery: a 5-year experience—clinical and angiographic results," *The Annals of Thoracic Surgery*, vol. 73, no. 1, pp. 143–148, 2002.
- [44] A. L. Iacò, G. Teodori, G. Di Giammarco et al., "Radial artery for myocardial revascularization: long-term clinical and angiographic results," *The Annals of Thoracic Surgery*, vol. 72, no. 2, pp. 464–468, 2001.
- [45] J. Cameron, S. Trivedi, G. Stafford, and J. H. Bett, "Five-year angiographic patency of radial artery bypass grafts," *Circulation*, vol. 110, 11, Supplement 1, pp. II23–II26, 2004.
- [46] N. D. Desai, E. A. Cohen, C. D. Naylor, and S. E. Fremes, "A randomized comparison of radial-artery and saphenous-vein coronary bypass grafts," *The New England Journal of Medicine*, vol. 351, no. 22, pp. 2302–2309, 2004.
- [47] S. Miwa, N. Desai, T. Koyama et al., "Radial artery angiographic string sign: clinical consequences and the role of pharmacologic therapy," *The Annals of Thoracic Surgery*, vol. 81, no. 1, pp. 112–119, 2006.
- [48] S. Manabe, T. Fukui, T. Shimokawa et al., "Increased graft occlusion or string sign in composite arterial grafting for mildly stenosed target vessels," *The Annals of Thoracic Surgery*, vol. 89, no. 3, pp. 683–687, 2010.
- [49] M. Merlo, A. Terzi, M. Tespili, and P. Ferrazzi, "Reversal of radial artery 'string sign' at 6 months follow-up," *European Journal of Cardio-Thoracic Surgery*, vol. 23, no. 3, pp. 432–434, 2003.
- [50] P. Goube, N. Hammoudi, J. Y. Pagny et al., "Radial artery graft stenosis treated by percutaneous intervention," *European Journal of Cardio-Thoracic Surgery*, vol. 37, no. 3, pp. 697–703, 2010.
- [51] T. Yonetsu, T. Kakuta, T. Lee et al., "Assessment of acute injuries and chronic intimal thickening of the radial artery after transradial coronary intervention by optical coherence tomography," *European Heart Journal*, vol. 31, no. 13, pp. 1608–1615, 2010.
- [52] A. K. Sharma, A. E. Ajani, N. Garg et al., "Percutaneous interventions in radial artery grafts: clinical and angiographic outcomes," *Catheterization and Cardiovascular Interventions*, vol. 59, no. 2, pp. 172–175, 2003.
- [53] J. Tatoulis, B. F. Buxton, J. A. Fuller et al., "Long-term patency of 1108 radial arterial-coronary angiograms over 10 years," *The Annals of Thoracic Surgery*, vol. 88, no. 1, pp. 23–30, 2009.
- [54] M. A. Paz, J. Lupon, X. Bosch, J. L. Pomar, and G. Sanz, "Predictors of early saphenous vein aortocoronary bypass graft occlusion," *The Annals of Thoracic Surgery*, vol. 56, no. 5, pp. 1101–1106, 1993.
- [55] M. S. Chow, E. Sim, T. A. Orszulak, and H. V. Schaff, "Patency of internal thoracic artery grafts: comparison of right versus left and importance of vessel grafted," *Circulation*, vol. 90, Part 2, pp. II129–II132, 1994.
- [56] S. V. Moran, R. Baeza, E. Guarda et al., "Predictors of radial artery patency for coronary bypass operations," *The Annals of Thoracic Surgery*, vol. 72, no. 5, pp. 1552–1556, 2001.
- [57] M. Gaudino, F. Alessandrini, C. Pragiola et al., "Effect of target artery location and severity of stenosis on mid-term patency of aorta-anastomosed vs. internal thoracic artery-anastomosed radial artery grafts," *European Journal of Cardio-Thoracic Surgery*, vol. 25, no. 3, pp. 424–428, 2004.
- [58] H. S. Maniar, T. M. Sundt, H. B. Barner et al., "Effect of target stenosis and location on radial artery graft patency," *The Journal of Thoracic and Cardiovascular Surgery*, vol. 123, no. 1, pp. 45–52, 2002.
- [59] R. H. Lopes, R. H. Mehta, G. E. Hafley et al., "Relationship between vein graft failure and subsequent clinical outcomes after coronary artery bypass surgery," *Circulation*, vol. 125, pp. 749–756, 2012.
- [60] K. Yie, C.-Y. Na, S. S. Oh, J.-H. Kim, S.-H. Shinn, and H.-J. Seo, "Angiographic results of the radial artery graft patency according to the degree of native coronary stenosis," *European Journal of Cardio-Thoracic Surgery*, vol. 33, no. 3, pp. 341–348, 2008.
- [61] M. A. Borger, G. Cohen, K. J. Buth et al., "Multiple arterial grafts. Radial versus right internal thoracic arteries," *Circulation*, vol. 98, 19 Supplement, pp. II7–II13, 1998.
- [62] S. G. Raja, U. Benedetto, A. Jothidasan et al., "Right internal mammary artery versus radial artery as second arterial conduit in coronary artery bypass grafting: a case-control study of 1526 patients," *International Journal of Surgery*, vol. 16, Part B, pp. 183–189, 2015.
- [63] B. F. Buxton, W. Y. Shi, J. Tatoulis, J. A. Fuller, A. Rosalion, and P. A. Hayward, "Total arterial revascularization with internal thoracic and radial artery grafts in triple-vessel coronary artery disease is associated with improved survival," *The Journal of Thoracic and Cardiovascular Surgery*, vol. 148, no. 4, pp. 1238–1244, 2014, discussion 1243–4.
- [64] E. Ruttman, N. Fischler, A. Sakic et al., "Second internal thoracic artery versus radial artery in coronary artery bypass grafting: a long-term, propensity score-matched follow up study," *Circulation*, vol. 124, no. 12, pp. 1321–1329, 2011.
- [65] M. Caputo, B. Reeves, G. Marchetto, B. Mahesh, K. Lim, and G. D. Angelini, "Radial versus right internal thoracic artery as a second arterial conduit for coronary surgery: early and mid-term outcomes," *The Journal of Thoracic and Cardiovascular Surgery*, vol. 126, no. 1, pp. 39–47, 2003.
- [66] M. Gaudino, R. Lorusso, M. Rahouma et al., "Radial artery versus right internal thoracic artery versus saphenous vein as the second conduit for coronary artery bypass surgery: a network meta-analysis of clinical outcomes," *Journal of the American Heart Association*, vol. 8, no. 2, article e010839, 2019.
- [67] M. Di Mauro, R. Lorusso, A. Di Franco et al., "What is the best graft to supplement the bilateral internal thoracic artery to the left coronary system? A meta-analysis," *European Journal of Cardio-Thoracic Surgery*, vol. 56, no. 1, pp. 21–29, 2019.
- [68] U. Benedetto, S. G. Raja, A. Albanese, M. Amrani, G. Biondi-Zoccai, and G. Frati, "Searching for the second-best graft for coronary artery bypass surgery: a network metaanalysis of randomized controlled trials," *European Journal of Cardio-Thoracic Surgery*, vol. 47, no. 1, pp. 59–65, 2015.
- [69] X. Hu and Q. Zhao, "Systematic comparison of the effectiveness of radial artery and saphenous vein or right internal thoracic artery coronary bypass grafts in non-left anterior descending coronary arteries," *Journal of Zhejiang University Science B*, vol. 12, no. 4, pp. 273–279, 2011.
- [70] P. A. Hayward and B. F. Buxton, "Mid-term results of the Radial Artery Patency and Clinical Outcomes randomized trial," *Annals of Cardiothoracic Surgery*, vol. 2, no. 4, pp. 458–466, 2013.
- [71] R. F. Tranbaugh, K. R. Dimitrova, P. Friedmann et al., "Radial artery conduits improve long-term survival after coronary

- artery bypass grafting," *The Annals of Thoracic Surgery*, vol. 90, no. 4, pp. 1165–1172, 2010.
- [72] H. Zhang, Z. W. Wang, H. B. Wu, X. P. Hu, Z. Zhou, and P. Xu, "Radial artery graft vs. saphenous vein graft for coronary artery bypass surgery: which conduit offers better efficacy?," *Herz*, vol. 39, no. 4, pp. 458–465, 2014.
- [73] C. Cao, C. Manganas, M. Horton et al., "Angiographic outcomes of radial artery versus saphenous vein in coronary artery bypass graft surgery: a meta-analysis of randomized controlled trials," *The Journal of Thoracic and Cardiovascular Surgery*, vol. 146, no. 2, pp. 255–261, 2013.
- [74] T. Athanasiou, S. Saso, C. Rao et al., "Radial artery versus saphenous vein conduits for coronary artery bypass surgery: forty years of competition—which conduit offers better patency? A systematic review and meta-analysis," *European Journal of Cardio-Thoracic Surgery*, vol. 40, no. 1, pp. 208–220, 2011.
- [75] S.-W. Song, S.-Y. Sul, H.-J. Lee, and K. J. Yoo, "Comparison of the radial artery and saphenous vein as composite grafts in off-pump coronary artery bypass grafting in elderly patients: a randomized controlled trial," *Korean Circulation Journal*, vol. 42, no. 2, pp. 107–112, 2012.
- [76] G. Nasso, R. Coppola, R. Bonifazi, F. Piancone, G. Bozzetti, and G. Speziale, "Arterial revascularization in primary coronary artery bypass grafting: direct comparison of 4 strategies—results of the stand-in-Y mammary study," *The Journal of Thoracic and Cardiovascular Surgery*, vol. 137, no. 5, pp. 1093–1100, 2009.
- [77] N. D. Desai, C. D. Naylor, A. Kiss et al., "Impact of patient and target-vessel characteristics on arterial and venous bypass graft patency: insight from a randomized trial," *Circulation*, vol. 115, no. 6, pp. 684–691, 2007.
- [78] S. K. Singh, N. D. Desai, S. D. Petroff et al., "The impact of diabetic status on coronary artery bypass graft patency: insights from the radial artery patency study," *Circulation*, vol. 118, 14_suppl_1, pp. S222–S225, 2008.
- [79] S. Damgaard, J. Wetterslev, J. T. Lund et al., "One-year results of total arterial revascularization vs. conventional coronary surgery: CARRPO trial," *European Heart Journal*, vol. 30, no. 8, pp. 1005–1011, 2008.
- [80] G. M. Fitzgibbon, H. P. Kafka, A. J. Leach, W. J. Keon, G. D. Hooper, and J. R. Burton, "Coronary bypass graft fate and patient outcome: angiographic follow-up of 5,065 grafts related to survival and reoperation in 1,388 patients during 25 years," *Journal of the American College of Cardiology*, vol. 28, no. 3, pp. 616–626, 1996.
- [81] J. G. Motwani and E. J. Topol, "Aortocoronary saphenous vein graft disease: pathogenesis, predisposition, and prevention," *Circulation*, vol. 97, no. 9, pp. 916–931, 1998.
- [82] P. A. R. Hayward, I. R. Gordon, D. L. Hare et al., "Comparable patencies of the radial artery and right internal thoracic artery or saphenous vein beyond 5 years: results from the Radial Artery Patency and Clinical Outcomes trial," *The Journal of Thoracic and Cardiovascular Surgery*, vol. 139, no. 1, pp. 60–67, 2010.
- [83] F. D. A. da Costa, I. A. da Costa, R. Poffo et al., "Myocardial revascularization with the radial artery: a clinical and angiographic study," *The Annals of Thoracic Surgery*, vol. 62, no. 2, pp. 475–480, 1996.
- [84] C. A. Dietl and C. H. Benoit, "Radial artery graft for coronary revascularization: technical considerations," *The Annals of Thoracic Surgery*, vol. 60, no. 1, pp. 102–110, 1995.
- [85] E. Manasse, G. Sperti, H. Suma et al., "Use of the radial artery for myocardial revascularization," *The Annals of Thoracic Surgery*, vol. 62, no. 4, pp. 1076–1083, 1996, discussion 1082–3.
- [86] B. F. Buxton, P. Ruengsakulrach, J. Fuller, A. Rosalion, C. M. Reid, and J. Tatoulis, "The right internal thoracic artery graft — benefits of grafting the left coronary system and native vessels with a high grade stenosis☆," *European Journal of Cardio-Thoracic Surgery*, vol. 18, no. 3, pp. 255–261, 2000.
- [87] P. Shah, M. Durairaj, I. Gordon et al., "Factors affecting patency of internal thoracic artery graft: clinical and angiographic study in 1434 symptomatic patients operated between 1982 and 20021," *European Journal of Cardio-Thoracic Surgery*, vol. 26, no. 1, pp. 118–124, 2004.
- [88] J. Pym, P. M. Brown, E. J. P. Charrette, J. O. Parker, and R. O. West, "Gastroepiploic-coronary anastomosis: a viable alternative bypass graft," *The Journal of Thoracic and Cardiovascular Surgery*, vol. 94, no. 2, pp. 256–259, 1987.
- [89] H. Suma, H. Fukumoto, and A. Takeuchi, "Coronary artery bypass grafting by utilizing in situ right gastroepiploic artery: basic study and clinical application," *The Annals of Thoracic Surgery*, vol. 44, no. 4, pp. 394–397, 1987.
- [90] H. Suma and R. Takanashi, "Arteriosclerosis of the gastroepiploic and internal thoracic arteries," *The Annals of Thoracic Surgery*, vol. 50, no. 3, pp. 413–416, 1990.
- [91] M. Ochiai, M. Ohno, J. Taguchi et al., "Responses of human gastroepiploic arteries to vasoactive substances: comparison with responses of internal mammary arteries and saphenous veins," *The Journal of Thoracic and Cardiovascular Surgery*, vol. 104, no. 2, pp. 453–458, 1992.
- [92] T. Takayama, H. Suma, Y. Wanibuchi, E. Tohda, T. Matsunaka, and S. Yamashita, "Physiological and pharmacological responses of arterial graft flow after coronary artery bypass grafting measured with an implantable ultrasonic Doppler miniprobe," *Circulation*, vol. 86, Supplement 5, pp. -II217–II223, 1992.
- [93] H. Suma, Y. Wanibuchi, S. Furuta, and A. Takeuchi, "Does use of gastroepiploic artery graft increase surgical risk?," *The Journal of Thoracic and Cardiovascular Surgery*, vol. 101, no. 1, pp. 121–125, 1991.
- [94] L. D. Hillis, P. K. Smith, J. L. Anderson et al., "2011 ACCF/AHA Guideline for Coronary Artery Bypass Graft Surgery: a report of the American College of Cardiology Foundation/American Heart Association Task Force on Practice Guidelines," *Circulation*, vol. 124, no. 23, pp. e652–e735, 2011.
- [95] M. Di Mauro, M. Contini, A. L. Iacò et al., "Bilateral internal thoracic artery on the left side: a propensity score- matched study of impact of the third conduit on the right side," *The Journal of Thoracic and Cardiovascular Surgery*, vol. 137, no. 4, pp. 869–874, 2009.
- [96] H. Hirose, A. Amano, and A. Takahashi, "Triple arterial coronary revascularization using the radial artery and bilateral internal mammary arteries versus the gastroepiploic artery and bilateral internal mammary arteries," *Circulation Journal*, vol. 66, no. 6, pp. 544–548, 2002.
- [97] P. Nataf, C. Guettier, A. Bourbon et al., "Influence of arterial allograft preparation techniques on chronic vascular rejection: a histological study," *Transplantation Proceedings*, vol. 28, no. 5, pp. 2890–2892, 1996.
- [98] F. Nappi, S. S. Avtaar Singh, M. Padala et al., "The choice of treatment in ischemic mitral regurgitation with reduced left

- ventricular function,” *The Annals of Thoracic Surgery*, vol. 108, no. 6, pp. 1901–1912, 2019.
- [99] F. Nappi, M. Lusini, C. Spadaccio et al., “Papillary muscle approximation versus restrictive annuloplasty alone for severe ischemic mitral regurgitation,” *Journal of the American College of Cardiology*, vol. 67, no. 20, pp. 2334–2346, 2016.
- [100] F. Nappi, C. Spadaccio, A. Nenna et al., “Is subvalvular repair worthwhile in severe ischemic mitral regurgitation? Subanalysis of the papillary muscle approximation trial,” *The Journal of Thoracic and Cardiovascular Surgery*, vol. 153, no. 2, pp. 286–295.e2, 2017.
- [101] F. Nappi, C. Spadaccio, and M. Fraldi, “Reply: papillary muscle approximation is an anatomically correct repair for ischemic mitral regurgitation,” *Journal of the American College of Cardiology*, vol. 68, no. 10, pp. 1147–1148, 2016.
- [102] F. Nappi, S. S. Avatar Singh, O. Santana, and C. G. Mihos, “Functional mitral regurgitation: an overview for surgical management framework,” *Journal of Thoracic Disease*, vol. 10, no. 7, pp. 4540–4555, 2018.
- [103] F. Nappi, C. Spadaccio, M. Chello, M. Lusini, and C. Acar, “Double row of overlapping sutures for downsizing annuloplasty decreases the risk of residual regurgitation in ischaemic mitral valve repair,” *European Journal of Cardio-Thoracic Surgery*, vol. 49, no. 4, pp. 1182–1187, 2016.
- [104] F. Nappi, S. S. A. Singh, I. Timofeeva, F. Gentile, and C. Acar, “The radial artery for coronary bypass grafting: the fifth decade,” *Surgical Technology International*, vol. 35, pp. 253–264, 2019.
- [105] F. Nappi, G. A. Antoniou, A. Nenna et al., “Treatment options for ischemic mitral regurgitation: a meta-analysis,” *The Journal of Thoracic and Cardiovascular Surgery*, vol. -S0022-5223, no. 20, pp. 31262–31269, 2020.
- [106] F. Nappi, M. Lusini, S. S. Avtaar Singh, O. Santana, M. Chello, and C. G. Mihos, “Risk of ischemic mitral regurgitation recurrence after combined valvular and subvalvular repair,” *The Annals of Thoracic Surgery*, vol. 108, no. 2, pp. 536–543, 2019.
- [107] F. Nappi, A. Nenna, C. Spadaccio et al., “Predictive factors of long-term results following valve repair in ischemic mitral valve prolapse,” *International Journal of Cardiology*, vol. 204, pp. 218–228, 2016.
- [108] S. A. de Oliveira, “Radial artery for coronary artery bypass grafting: 23-year graft patency,” *The Annals of Thoracic Surgery*, vol. 68, no. 6, pp. 2390–2391, 1999.