



HAL
open science

Retinal micro-vascular network: data and model

L. Julien, J. Ventre, Pierre-Yves Lagrée, A. Ramkhelawon, F. Rossant,
Michael Atlan, M. Paques, J.-M. Fullana

► **To cite this version:**

L. Julien, J. Ventre, Pierre-Yves Lagrée, A. Ramkhelawon, F. Rossant, et al.. Retinal micro-vascular network: data and model. *Computer Methods in Biomechanics and Biomedical Engineering*, 2020, 5th Congress of the Société de Biomécanique, 23 (sup1), pp.S151 - S152. 10.1080/10255842.2020.1812854 . hal-03229852

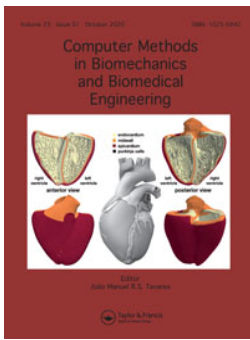
HAL Id: hal-03229852

<https://hal.sorbonne-universite.fr/hal-03229852v1>

Submitted on 19 May 2021

HAL is a multi-disciplinary open access archive for the deposit and dissemination of scientific research documents, whether they are published or not. The documents may come from teaching and research institutions in France or abroad, or from public or private research centers.

L'archive ouverte pluridisciplinaire **HAL**, est destinée au dépôt et à la diffusion de documents scientifiques de niveau recherche, publiés ou non, émanant des établissements d'enseignement et de recherche français ou étrangers, des laboratoires publics ou privés.



Computer Methods in Biomechanics and Biomedical Engineering

ISSN: 1025-5842 (Print) 1476-8259 (Online) Journal homepage: <https://www.tandfonline.com/loi/gcmb20>

Retinal micro-vascular network: data and model

L. Julien, J. Ventre, P.-Y Lagrée, A. Ramkhelawon, F. Rossant, M. Atlan, M. Paques & J.-M. Fullana

To cite this article: L. Julien, J. Ventre, P.-Y Lagrée, A. Ramkhelawon, F. Rossant, M. Atlan, M. Paques & J.-M. Fullana (2020) Retinal micro-vascular network: data and model, Computer Methods in Biomechanics and Biomedical Engineering, 23:sup1, S151-S152, DOI: [10.1080/10255842.2020.1812854](https://doi.org/10.1080/10255842.2020.1812854)

To link to this article: <https://doi.org/10.1080/10255842.2020.1812854>



© 2020 The Author(s). Published by Informa UK Limited, trading as Taylor & Francis Group



Published online: 02 Nov 2020.



Submit your article to this journal [↗](#)



Article views: 249



View related articles [↗](#)



View Crossmark data [↗](#)

Retinal micro-vascular network: data and model

L. Julien^{a,b}, J. Ventre^a, P.-Y. Lagrée^a, A. Ramkhelawon^a, F. Rossant^b, M. Atlan^b, M. Paques^b and J.-M. Fullana^a

^aInstitut Jean Le Rond d'Alembert, CNRS, Sorbonne Université, Paris, France; ^bUnité d'Imagerie à Haute Résolution, Hôpital des Quinze-Vingts, Paris, France

1. Introduction

The retina offers the most accessible imaging of micro-vascular networks. Actually current developed techniques at the Hôpital des Quinze-Vingts using adaptive optic ophthalmoscopy and the holographic Doppler laser (Koch et al 2014; Magnain et al. 2014) allow revisiting the pathophysiological conceptions of retinal circulation. They currently provide hemodynamic and morphometric quantitative parameters of human retinal vessels with high spatial and temporal precision. It made possible, for example, to better understand local vasomotor phenomena, a potential source of locoregional redistribution of blood flow. We can obtain the global visualization as shown in Figure 1 where network topology and hemodynamic measurement are available. Such a large vision of a microcirculatory system can give considerable advances in terms of modelling and medical applications. Data naturally provide assets for validation and/or development of new models and theories.

We propose to build a theoretical-numerical model of a 1D retinal network. It will account for phenomena of redistribution of retinal blood flow and vascular diameters. In particular, when they results from local mechanical or constraint modifications, a current effect of some retinal pathologies. The numerical modelling resulting from the theoretical model will make it possible to propose relations between the mechanical stresses and the local modification of the diameters of the vessels. This work is composed of several steps, including the addition to the 1D model of optimality as defined by Murray (Fung 1997) and the validation of this model and its predictive potential.

2. Methods

The retinal network is constructed by connecting segments following the topology presented in Figure 1. Pathological reactions such as occlusions are modelled by the constrained narrowing of a specific arteriolar vessel. The choice of segment is determined by experimental data collected from pathological patients.

The hemodynamic variables of each segment follow the governing 1D equations of the integrated axisymmetric Navier-Stokes equations. They are coupled with a viscoelastic wall model and expressed in terms of the cross-sectional area A and the flow rate Q of each micro-vessel:

$$\begin{aligned} \partial_t A + \partial_x Q &= 0 \\ \partial_t Q + \partial_x \left(\frac{Q^2}{A} + \frac{\beta}{3\rho} A^{\frac{3}{2}} \right) &= -C_f \frac{Q}{A} + C_v \partial_{xx} Q \end{aligned}$$

where ρ is the density of the fluid and C_f the friction coefficient. The coefficients

$$\beta = \frac{\sqrt{\pi} E h}{(1 - \nu^2) A_0}$$

and

$$C_v = \frac{\sqrt{\pi} h \phi}{2\rho(1 - \nu^2)\sqrt{A_0}}$$

contain the physical parameters of the problem. We used the Young's modulus E , the Poisson ratio ν the viscoelastic coefficient ϕ , the neutral cross-sectional area A_0 , and the arterial thickness h . Furthermore we propose to study the development of specific rheological law to take into account the viscosity variation in the micro-circulation. More details about the 1D model, the volume fluid scheme chosen to integrate the discrete system of equation, and the coefficient values can be found in references (Wang et al. 2015; Ghigo et al. 2018).

Experimental data from the holographic Doppler laser are used for boundary conditions, to impose the flow rate Q on the terminal vessels and at the inlet of the network. These data are also required as a comparison with the other segments to validate the model.

We can perform measurements in hemodynamic in micro-vessels from 120 to 20 μm in diameter. This allows studying the reciprocal interactions of flow distribution anomalies. An experimental work is done in

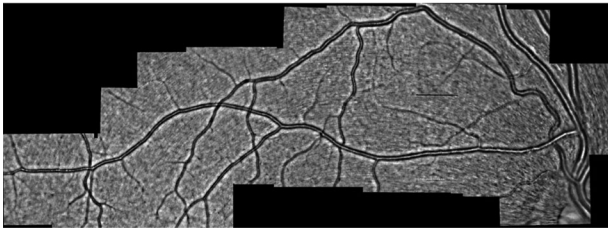


Figure 1. Microcirculatory network of the eye by adaptive optic ophthalmoscopy and morphometric analysis. Arterioles diameters run from 120 to 20 μm . Image size: 15.2 mm \times 5.2 mm.

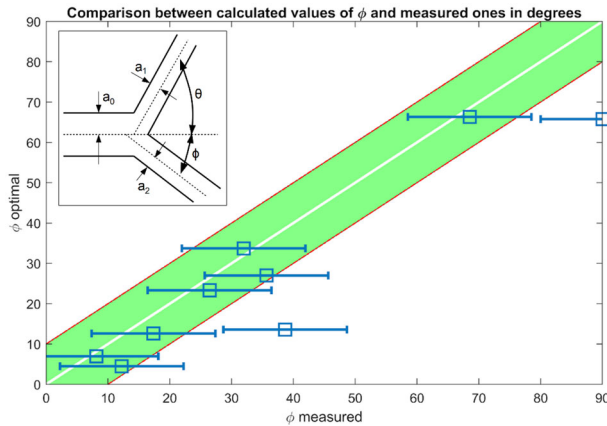


Figure 2. Angles correlation between measured and optimal following the Murray theory.

parallel with anatomical work on large samples of human retina to model the retinal microcirculation in and between the different physiological layers.

3. Results and discussion

For blood vessels, an optimisation procedure, the Murray law, (Fung 1997) proposes a cost function that is the sum of the rate at work is done to carry the flow blood and the rate at which energy is used up by metabolism for maintain blood circulation. It follows in any junction involving three micro-vessels optimal relationships between radius (subscript 0 for incoming vessel and 1/2 for out coming vessels) and angles as sketched in the inset of Figure 1:

$$\cos \Phi = \frac{a_0^4 - a_1^4 + a_2^4}{2 a_0^2 a_2^2}$$

To investigate the optimality of the retinal network of Figure 1 we measured radius and angles in each bifurcation and we compared them to the Murray theory. Figure 2 presents the correlation between one of the measured angles with error bars (horizontal lines) and the optimal angles as defined by Murray

law. We observe a significant correlation between measures and predictions. The other measurements of diameter and second angle are comparable.

The work in progress involves a complete validation of the 1D model including the optimality constraint. It also contains the study of the period during which the dynamic system deviates from optimality under pathological conditions.

4. Conclusions and perspectives

We have presented a 1D model of retinal network together with experimental data of morphology and hemodynamic. We analyse and validate the optimality relations given by the Murray law.

Recent results suggest that 1D numerical predictions given by the proposed model could also be used to the understanding of mechanical relations between the mechanical stresses and the local modification of the diameters of the vessels.

In retinal pathology, this work will allow us to better estimate the phenomena of secondary capillary occlusion that follow reductions in blood pressure, to map the intraluminal pressure distribution and mainly to study the effect of variations in blood viscosity on retinal circulation.

Disclosure statement

No potential conflict of interest was reported by the author(s).

References

- Fung YC. 1997. Blood flow in arteries. *Biomechanics: Circulation*. 1:108–205.
- Ghigo A, Lagrée P-Y, Fullana J-M. 2018. A time-dependent non-Newtonian extension of a 1D blood flow model. *J Non-Newtonian Fluid Mech*. 253:36–49.
- Koch E, Rosenbaum D, Brolly A, Sahel JA, Chaumet-Riffaud P, Girerd X, Rossant F, Paques M. 2014. Morphometric analysis of small arteries in the human retina using adaptive optics imaging: relationship with blood pressure and focal vascular changes. *J Hypertens*. 32(4):890–898.
- Magnain C, Castel A, Boucneau T, Simonutti M, Ferezou I, Rancillac A, Vitalis T, Sahel JA, Paques M, Atlan M. 2014. Holographic laser Doppler imaging of microvascular blood flow. *J Opt Soc Am A Opt Image Sci Vis*. 31(12):2723–2735.
- Wang X, Fullana J-M, Lagrée P-Y. 2015. Verification and comparison of four numerical schemes for a 1D visco-elastic blood flow model. *Comput Methods Biomech Biomed Eng*. 18(15):1704–1725.

KEYWORDS Retinal circulation; 1D models; optimal network

 jose.fullana@sorbonne-universite.fr