



Extreme adaptive optics astrometry of R136

Z. Khorrami, M. Langlois, F. Vakili, P. C Clark, A. S M Buckner, M. Gonzalez, P. Crowther, R. Wünsch, J. Palouš, A. Boccaletti, et al.

► To cite this version:

Z. Khorrami, M. Langlois, F. Vakili, P. C Clark, A. S M Buckner, et al.. Extreme adaptive optics astrometry of R136. *Astronomy and Astrophysics - A&A*, 2021, 649, pp.L8. 10.1051/0004-6361/202140668 . hal-03257184

HAL Id: hal-03257184

<https://hal.sorbonne-universite.fr/hal-03257184>

Submitted on 10 Jun 2021

HAL is a multi-disciplinary open access archive for the deposit and dissemination of scientific research documents, whether they are published or not. The documents may come from teaching and research institutions in France or abroad, or from public or private research centers.

L'archive ouverte pluridisciplinaire **HAL**, est destinée au dépôt et à la diffusion de documents scientifiques de niveau recherche, publiés ou non, émanant des établissements d'enseignement et de recherche français ou étrangers, des laboratoires publics ou privés.

LETTER TO THE EDITOR

Extreme adaptive optics astrometry of R136

Searching for high proper motion stars^{★,★★}

Z. Khorrami¹, M. Langlois², F. Vakili³, P. C. Clark¹, A. S. M. Buckner⁴, M. Gonzalez⁵, P. Crowther⁶, R. Wunsch⁷,
J. Palouš⁷, A. Boccaletti⁸, S. Lumsden⁹, and E. Moraux⁵

¹ School of Physics and Astronomy, Cardiff University, The Parade, Cardiff CF24 3AA, UK
e-mail: KhorramiZ@cardiff.ac.uk

² Université de Lyon, Université Lyon 1, CNRS, CRAL UMR5574, Saint-Genis Laval, France

³ Université Côte d'Azur, OCA, CNRS, Lagrange, France

⁴ School of Physics and Astronomy, University of Exeter, Stocker Road, Exeter EX4 4QL, UK

⁵ Université Grenoble Alpes, CNRS, IPAG, 38000 Grenoble, France

⁶ Department of Physics and Astronomy, Hounsfield Road, University of Sheffield, Sheffield S3 7RH, UK

⁷ Astronomical Institute of the Czech Academy of Sciences, Boční II 1401/1a, 141 00 Praha 4, Czech Republic

⁸ LESIA, Observatoire de Paris, CNRS, Université Paris 7, Université Paris 6, 5 place Jules Janssen, 92190 Meudon, France

⁹ School of Physics and Astronomy, University of Leeds, Leeds LS2 9JT, UK

Received 26 February 2021 / Accepted 22 April 2021

ABSTRACT

We compared high-contrast near-infrared images of the core of R136 taken by VLT/SPHERE, in two epochs separated by 3.06 years. For the first time we monitored the dynamics of the detected sources in the core of R136 from a ground-based telescope with adaptive optics. The aim of these observations was to search for High prOper Motion cAndidates (HOMAs) in the central region of R136 ($r < 6''$) where it has been challenging for other instruments. Two bright sources ($K < 15$ mag and $V < 16$ mag) are located near R136a1 and R136c (massive WR stars) and have been identified as potential HOMAs. These sources have significantly shifted in the images with respect to the mean shift of all reliable detected sources and their neighbours, and six times their own astrometric errors. We calculate their proper motions to be 1.36 ± 0.22 mas yr⁻² (321 ± 52 km s⁻¹) and 1.15 ± 0.11 mas yr⁻² (273 ± 26 km s⁻¹). We discuss different possible scenarios to explain the magnitude of such extreme proper motions, and argue for the necessity to conduct future observations to conclude on the nature of HOMAs in the core of R136.

Key words. galaxies: star clusters: individual: R136 – astrometry – proper motions – instrumentation: high angular resolution – instrumentation: adaptive optics

1. Introduction

The R136 star cluster in the 30 Dor region of the Large Magellanic Cloud (LMC) is a unique astrophysical laboratory; it is sufficiently young (1.5–2 Myr, de Koter et al. 1998; Crowther et al. 2016; Bestenlehner et al. 2020) and rich (Crowther et al. 2010) to allow the study of the formation and evolution of the most massive stars. Most of the information on R136 comes from *Hubble* Space Telescope (HST) observations, which was used to study various parameters including the cluster's star formation history, stellar content, and kinematics (Hunter et al. 1995; Andersen et al. 2009; De Marchi et al. 2011; Cignoni et al. 2015). Using the Spectro-Polarimetric High-contrast Exoplanet Research (SPHERE, Beuzit et al. 2019) of the Very Large Telescope (VLT) in 2015 we obtained the first epoch observations of

the R136 core (Khorrami et al. 2017) in the near-infrared (NIR), and in 2018 we obtained a second set of observations for this region (Khorrami et al. 2021). Comparing the two sets of observations, we monitored the dynamics of the detected sources in the core of R136 searching for High prOper Motion cAndidates (HOMAs¹). The presence of such high-velocity stars in the core of massive young star clusters can explain or change the hypothesis on the formation of massive stars (if they form either in isolation or were ejected dynamically from the cluster) and the dynamics of the 30 Dor region as a whole.

The proper motion (PM) measurement of stars in 30 Dor relies on HST data taken with various instruments (WFPC2, ACS/WFC, and WFC3/UVIS) and filters in different epochs (Platais et al. 2015, 2018). There are therefore several difficulties with obtaining these measurements since the data in each instrument (and filter) show coordinate-dependent systematic and geometric distortions that appear in the transformation of instrument pixel coordinates and the PMs. Among the higher-precision PM sources, a handful of stars exceed 1 mas yr⁻¹, but were excluded from the analysis by

* Catalogue of reliable-consistent sources is only available at the CDS via anonymous ftp to cdsarc.u-strasbg.fr (130.79.128.5) or via <http://cdsarc.u-strasbg.fr/viz-bin/cat/J/A+A/649/L8>

** Based on observations made with ESO Telescopes at the La Silla Paranal Observatory under programme ID 0102.D0271 and 095.D-0309.

¹ Homa is a mythical bird from Iranian legends that never comes to rest, living its entire life flying invisibly high above the earth.

setting an upper limit on the velocity of stars based on the maximum radial velocity measurements from VLT Flames Tarantula Survey (VFTS) observations (Evans et al. 2011). The PM measurements in the 30 Dor region, as given by HST and recently by *Gaia* (Lennon et al. 2018), do not detect sources at the core of R136 because of the concentration of bright sources and their small angular separations. Thus, higher angular resolution and small pixel sampling are needed to improve the PM measurements without overexposing the bright sources (and masking their faint neighbours); better estimations of the positions of stars are also needed during the photometry for point spread function (PSF) fitting. SPHERE/IRDIS can observe the core of R136 in the NIR where the flux ratio of stars is lower than in the optical, and with higher angular resolution and pixel sampling ($12.25 \text{ mas pix}^{-1}$) than the HST (e.g. WFC3/UVIS has 40 mas pix^{-1}). These parameters make IRDIS the best instrument available at present to resolve the higher number of stars in the core of R136. Additionally, IRDIS produces two sets of data simultaneously taken within the same filter, overcoming the instrumental errors such as bad pixels and imperfections of the detector, which are critical to the PM measurements.

2. Data

We used two sets of imaging data over a field of view (FOV) of $11'' \times 12''$ centred on the core of R136 in the *K* band in 2015 (2015-09-22, ID 095.D-0309) and 2018 (2018-10-10, ID 0102.D-0271). These two sets of epoch data were recorded using the classical imaging mode of IRDIS (Langlois et al. 2014). Using the data taken with the same instrument and exactly the same configuration, 3.06 yr apart, enabled us to study the dynamics of the core of R136 with the highest angular resolution to date. For our purposes, the same spectral band was split into the two IRDIS channels (the simultaneous images on the left and right side of the detector), which were used to correct for residual detector artefacts such as hot pixels and uncorrelated detector noise, among other instrumental effects. We corrected each image for the anamorphism following Maire et al. (2016) before the final image combination. The image sharpness of the total exposure was maximised by discarding the single frames with poorer Strehl ratio and by correcting a posteriori the residual tip-tilt image motion on each short exposure before combining them.

The seeing was $0.69 \pm 0.10''$ and 0.63 ± 0.10 , for the 2018 and 2015 observations, respectively. The night was rated as clear for both epochs, meaning that less than 10% of the sky (above 30 degrees elevation) was covered by clouds, and transparency variations were less than 10% during the exposures, with an airmass between 1.61–1.67 (in 2015) and 1.52–1.45 (in 2018). Our data consists of 300 (in 2015) and 544 (in 2018) frames of 4.0s exposures taken with the IRDIS broad-band *K* filter ($\lambda_{\text{cen}} = 2182 \text{ nm}$, $\Delta\lambda = 294 \text{ nm}$). The Wolf-Rayet star R136a1 was used for guiding the AO loop of SPHERE confirming the high level of performance even for faint guide stars, which surpasses the performance of the Nasmyth Adaptive Optics System Near-Infrared Imager and Spectrograph (NACO) and the Multi-conjugate Adaptive optics Demonstrator (MAD) (e.g. Campbell et al. 2010). The details of the data reduction procedure are given in Sect. 2 of Khorrami et al. (2021).

3. Photometry

Photometry is carried out on the two images (left and right) from each epoch, using the same method and criteria as explained

in Sect. 3 of Khorrami et al. (2021). We needed to repeat the photometric analysis in both epochs for three reasons: (1) the input PSF should be the same in two epochs in order to have a robust photometric analysis; (2) some of the input PSF used in the photometric analysis in the first epoch (Khorrami et al. 2017) appeared as multiple systems in 2018 where we use longer exposures; and (3) the photometric analysis of the 2015 data was done on the combined left and right images, but separate photometric analyses of the left and right images were required for the present purpose.

The common sources between the two images were defined according to their position², their magnitude difference being less than 0.5, and the correlation between their input PSF and detected sources less than 10%. This means that the detected sources in the two images have a very similar PSF shape since the input PSF stars are chosen to be the same in all four images. The number of common sources between the left and right *K* images was 705 and 1451 in 2015 and 2018, respectively. Although in principle we should not see any shift in the position of the common sources per epoch, our astrometry analysis still measures the shift for each detected source in each epoch between the left and right images. This shift can be caused by the instrument, detector bad pixels, locally varying pixel scales, and flux difference between the left and right images. We call this the “instrumental shift” because it does not represent potential physical movement of the stars. If it is larger than half a pixel, we withdraw the source from our final astrometry analysis. After applying this constraint, a total of 515 (in 2015) and 1059 (in 2018) sources in common between the left and right images remain. The final number of common sources after this selection is 494.

4. Astrometry

We analysed the movement (shift) of each source locally, by superimposing its neighbours located within the radius of 50 pix. If there are fewer than three neighbours, a larger radius (previous radius plus 10 pix) is considered. A bootstrap technique is employed to measure the errors. The astrometry is performed using a three-step process in order to superimpose data between two epochs: (1) local correction technique (LCT) to superimpose the data as much as possible to find any x-y shifts or rotation of data between the two epochs; (2) global rotation around a centre and angle found in the first step; and (3) LCT again to correct any residual instrumental or artificial effects.

We used these steps in order to detect HOMAs in our *K*-band data between 2015 and 2018. These measurements were performed separately on the right and left data.

In order to estimate the shift of stars, we used N detected neighbour sources within a radius of $R_{\text{nbr}} = 50 \text{ pix}$ in both images with the aim of superimposing these neighbour sources (similar to the method by Anderson & van der Marel 2010). Our algorithm estimates the shift between the position of a given neighbour star in the 2015 and 2018 images in the *X* and *Y* directions (dX_i and dY_i). By minimising the chi-square (χ^2) estimation, the final dX and dY values are calculated and a bootstrapping technique ($N_{\text{sample}} = 100$) is used to calculate the error on the dX and dY values. In the ideal case, without local distortion or bad pixels on the image (detector), the dX and dY values should be constant across the FOV so we can superimpose the two sets of data easily by using the constant values of dX and

² Closer than the full width at half maximum (FWHM) of the PSF, which is the resolution.

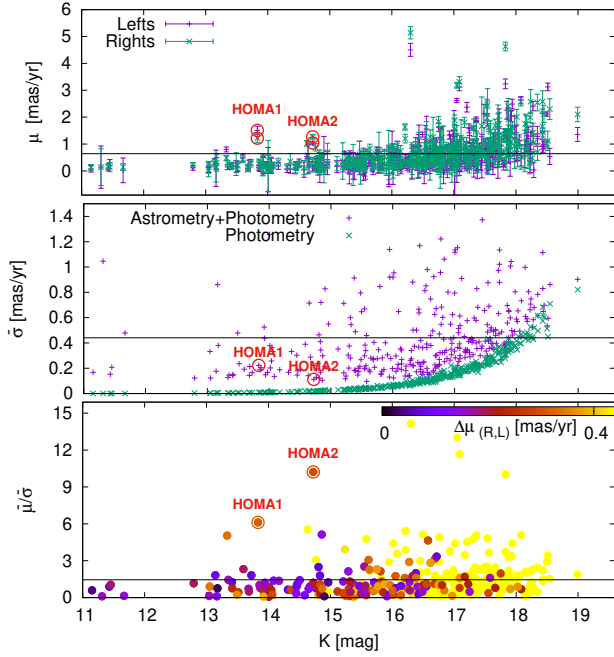


Fig. 1. Astrometric analysis of 339 reliable sources, common between 2015 and 2018, left and right data. *Top*: shift of stars, measured in the right (green crosses) and left (purple pluses) data vs their K magnitudes. *Middle*: total error (purple pluses) and photometric error (green crosses) on the positions of the detected sources, averaged between the left and right data vs their K magnitudes. *Bottom*: shift of a star over its total error ($\frac{\mu}{\sigma}$) vs its K magnitudes, colour-coded by $\Delta\mu_{(R,L)}$. The horizontal black lines show the average value for all 339 sources.

dY. However, as this does not happen in real data, we used an algorithm to superimpose the catalogues locally.

The variation in dX and dY across the FOV shows the global rotation centred at [634,669] and [622,932] in the left and right images in 2015, about 0.18° clockwise. The two sets of catalogues were superimposed using this global rotation, and LCT was run again to remove any astrometric residuals and measure the PM of detected sources with higher precision. The measured PM of the stars within 3.06 years are

$$\mu_x = X_{2018} - (X_{2015} + dX), \mu_y = Y_{2018} - (Y_{2015} + dY).$$

5. Selected sources

Of the 494 sources referred to in Sect. 3, 425 sources have been detected in the NIR (J and H) using SPHERE/IRDIS and in the optical using HST/WFPC2. To maximise robustness we excluded the sources detected only in K and also the 76 sources that have fewer than three neighbours (within $R_{\text{nbr}} = 50$ pix). This leaves 339 reliable sources that have been detected in the optical and in the NIR and that have at least three neighbours, the minimum number of neighbours required to superimpose catalogues astrometrically.

The top plot of Fig. 1 shows the shift (μ) of the 339 reliable sources measured in the left and right data versus their K magnitude. The middle plot shows the error on the position of these sources versus their K magnitude. Errors on star positions come from the astrometric and photometric analysis (e.g. results from PSF fitting) on each data set. This plot shows that the error from astrometry is significantly larger than the photometry for the bright sources. For the faint stars the error on the photometry increases and becomes comparable with the astrometry error

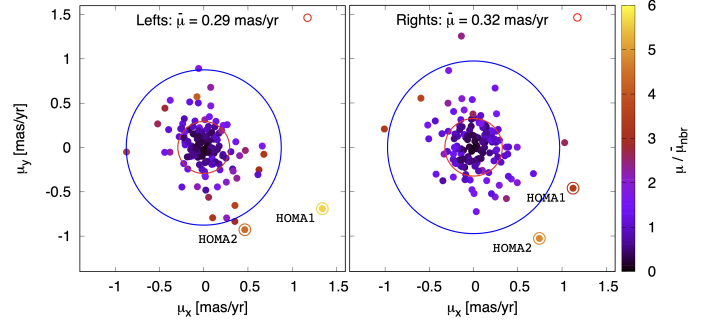


Fig. 2. Estimated PM of RC sources from analysing the left (*left*) and right (*right*) data. The radius of the large red and blue circle denotes the mean shift of the RC sources and three times this value, respectively. The colour-coding indicates the shift of each source compared to the mean shift of its neighbours ($\frac{\mu}{\mu_{\text{nbr}}}$).

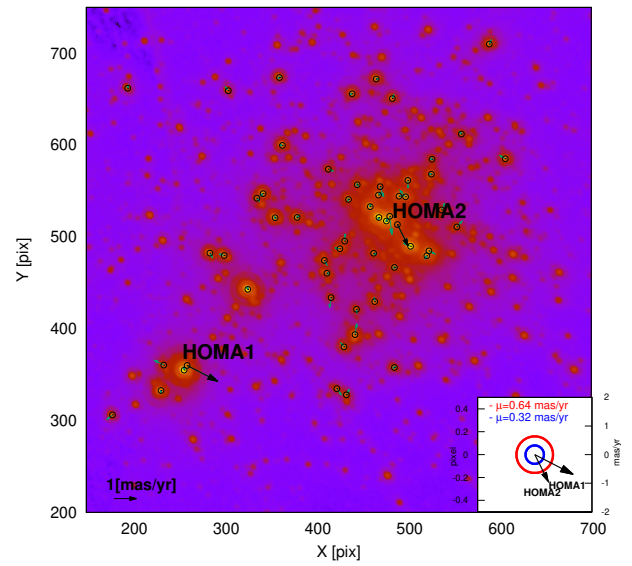


Fig. 3. Image of R136 by IRDIS/K. Small black circles are bright reliable sources ($K < 15$ mag). The green and black arrows indicate the PM of these sources, magnified 100 times. The inset in the bottom right corner shows 1 pixel size (1 pix = 4 mas yr $^{-1}$) and the amount of the HOMAs shifts compared to the mean shift of 339 reliable sources ($\bar{\mu} = 0.64$ mas yr $^{-1}$) and 141 RC sources ($\bar{\mu} = 0.32$ mas yr $^{-1}$) respectively as a large red and blue circle.

since the signal-to-noise ratio (S/N) decreases. The bottom plot shows how large the shift is compared to its error ($\frac{\mu}{\sigma}$). The colour bar indicates the difference between the shift of a star in the left and right data ($\Delta\mu_{(R,L)}$, Eq. (1)). All sources with shifts inconsistent between left and right are yellow. For these sources, the measured shift between the left and right data is larger than the mean error of the reliable sources:

$$\Delta\mu_{(R,L)} = \sqrt{(\mu_{x,L} - \mu_{x,R})^2 + (\mu_{y,L} - \mu_{y,R})^2}. \quad (1)$$

When the detected sources become fainter, the astrometry measurements are less reliable due to the smaller S/N (the error on the star centres increase by inverse S/N), so that μ and $\Delta\mu_{(R,L)}$ increase with increasing stellar magnitudes. For fainter sources this leads to larger errors in the positions so the measured shift will not be consistent between the left and right data. The mean shift of 339 reliable sources is 0.16 pix (0.64 mas yr $^{-1}$) and their mean total errors ($\bar{\sigma}$) is 0.11 pix (0.44 mas yr $^{-1}$). These values are shown in Fig. 1 as a solid black horizontal line.

Table 1. Magnitudes and PMs of the HOMAs and the five brightest sources in the core of R136.

Name	K_{2018}, K_{2015}	H	J	I	V	U	μ_x [mas yr ⁻¹]	μ_y [mas yr ⁻¹]	μ_x [mas yr ⁻¹]	μ_y [mas yr ⁻¹]
(H95/K21)	(SPHERE/IRDIS)			(HST/WFPC2)				(left)		(right)
HOMA1 (124/22)	13.83, 13.84	14.41	14.33	15.46	15.97	–	1.34 ± 0.12	-0.69 ± 0.09	1.12 ± 0.13	-0.46 ± 0.10
HOMA2 (107/51)	14.72, 14.49	14.68	14.77	15.34	15.74	14.58	0.46 ± 0.05	-0.93 ± 0.05	0.74 ± 0.04	-1.03 ± 0.08
R136a1 (3/1)	11.15, 11.07	11.29	11.33	12.18	12.84	11.56	0.01 ± 0.08	0.07 ± 0.09	0.05 ± 0.08	0.11 ± 0.08
R136a2 (5/3)	11.43, 11.32	11.70	11.55	12.84	12.96	11.94	-0.01 ± 0.09	-0.10 ± 0.05	0.04 ± 0.07	-0.16 ± 0.08
R136a3 (6/4)	11.45, 11.44	11.73	11.77	12.46	13.01	11.86	-0.07 ± 0.05	0.12 ± 0.10	0.09 ± 0.10	0.11 ± 0.14
R136c (10/2)	11.31, 11.48	11.98	11.78	12.71	13.47	12.52	-0.00 ± 0.70	0.14 ± 0.35	0.13 ± 0.63	0.05 ± 0.27
R136b (9/5)	11.67, 11.66	11.89	11.67	12.76	13.32	12.29	0.00 ± 0.37	0.02 ± 0.28	0.12 ± 0.10	0.08 ± 0.08

Notes. H95 and K21 are the identification of these sources from Hunter et al. (1995) and Khorrami et al. (2021), respectively. K_{2018} , K_{2015} , H , and J are the magnitudes in the SPHERE/IRDIS filters (Khorrami et al. 2017, 2021). I , V , and U are the magnitudes in the HST $F814W$, $F555W$, and $F336W$ filters (Hunter et al. 1995). μ_x and μ_y are the 2D PMs estimated from their position shift within 3.06 years in the left and right data.

Of these 339 reliable sources, 141 have consistent velocities ($\Delta\mu_{(R,L)} \leq \bar{\sigma}$) between the left and right data; they are known as reliable-consistent (RC) sources. Figure 2 shows the PM of RC sources measured from the analysis of the left and right data sets. The colour indicates the shift of each source compared to the mean shift of its neighbours ($\frac{\mu}{\mu_{nbr}}$). The mean shift of RC sources in the left and right data are 0.07 pix (0.29 mas yr⁻¹) and 0.08 pix (0.32 mas yr⁻¹), respectively. The radius of the large red and blue circles is the mean shift of all RC sources and three times this value, respectively. There are two sources with PMs that are three times larger than the mean shift of RC sources, and three times larger than the mean shift of their neighbours, in the left and the right data sets. These two sources are identified as HOMAs (Fig. 2); they are both brighter than 15 mag in K (16 in V) and have been detected with a high S/N in NIR filters and in the visible.

These stars are shown in Fig. 3, together with 62 bright sources ($K \leq 15$) for comparison. Notably, both of the HOMAs are located very close to R136a1 (separation of 155 mas) and R136c (separation of 72 mas), which are bright K -band sources³. The analysis of the X-ray spectra of R136c shows the high X-ray hardness and luminosity in addition to the higher plasma temperature than typical for single early-type stars, suggesting that it is most likely to be a colliding-wind binary system (Zwart et al. 2002; Townsley et al. 2006; Guerrero & Chu 2008).

Table 1 gives the IVUJHK magnitudes and PMs of the two HOMAs and the five brightest sources in the FOV. HOMA1 and HOMA2 have PMs of 1.36 ± 0.22 mas yr⁻¹ and 1.15 ± 0.11 mas yr⁻¹, respectively. For the distance modulus of 18.49 (Pietrzyński et al. 2013; Gibson 2000) 1 mas yr⁻¹ is 236 km s⁻¹, these HOMAs have a tangential velocity of 321 ± 52 km s⁻¹ and 273 ± 26 km s⁻¹.

6. Conclusion

We obtained VLT/SPHERE/IRDIS K -band images of the core of R136 at two epochs, separated by 3.06 years. A careful scrutiny of two-epoch astrometry enabled us to discard instrumentally apparent moving sources. We found 494 suitable sources in common between these four images in the K band, where 339 sources have also been detected in IRDIS- J and - H , and in the

optical by HST/WFPC2. Comparing the 2D shift of stars in left and right data sets, only 141 sources have consistent PMs between these data sets. Among these RC sources, two stars have a PM that is three times larger than the average value (0.29 mas yr⁻¹, left, and 0.32 mas yr⁻¹, right) and their neighbours. According to our analysis, these two bright sources (see Table 1) are potential HOMAs. These stars have shifted more than the mean shift of all reliable sources (Fig. 1-top), three times that of the average shift of all RC sources and their neighbours (Fig. 2), and six times their astrometric errors (Fig. 1-bottom), with a tangential velocity of 321 ± 52 km s⁻¹ and 273 ± 26 km s⁻¹. The stars could have acquired such high velocities through a number of mechanisms, none of which are considered probable: (i) during the assembly of the cluster (e.g. VFTS16 currently very distant from R136, Lennon et al. 2018), (ii) following the supernova explosion of a binary companion (too early for R136 given its youth, Renzo et al. 2019); (iii) via three-body interactions with a massive binary (possible, though incredibly rare); (iv) an encounter with a compact massive body (although there is no evidence for an intermediate mass black hole in R136). Alternatively, they could be slower moving foreground sources (though the presence of two sources within the small IRDIS FOV is very unlikely). Comparing the location of HOMAs in the CMDs (Fig. A.1), HOMA2 is closer to the main sequence than HOMA1. HOMA1(HOMA2) has $V - I$ of 0.51(0.40) mag and $J - K$ of 0.49(0.28) mag, making them unlikely to be foreground Galactic stars. If HOMA1 is a foreground galactic star, then its tangential velocity is ~ 108 km s⁻¹ at a distance of 20 Kpc (edge of the Milky Way toward the LMC). Since the localisation of these sources is challenging given their proximity to R136a1 and R136c, future observations are necessary to confirm their high PMs and status as HOMAs. These sources are expected to have high radial velocities, so they are the desired targets for the spectroscopic observations of the core of R136 (e.g. MUSE/NFM Castro et al. 2021). Pending future gain in spatial resolution by extremely large telescopes, the present work is also the first step towards constraints on the kinematics of other galaxies than our Milky Way.

Acknowledgements. We thank our reviewer, C. Evans, for his constructive comments which improved this Letter. The SFM project has received funding from the European Union's Horizon 2020 research and innovation program under grant agreement No 687528. ZK acknowledges the support of a STFC Consolidated Grant (ST/K00926/1). This work has made use of the SPHERE Data Centre, jointly operated by OSUG/IPAG (Grenoble), PYTHEAS/LAM/CeSAM (Marseille), OCA/Lagrange (Nice), Observatoire de Paris/LESIA (Paris), and Observatoire de Lyon (OSUL/CRAL). This work is supported by PNPS/CNRS.

³ See Fig. A.2 to compare these separations (72 and 155 mas) with the radius of the FWHM (31.81 mas), and the first dark (37.90 mas) and first bright (50.9 mas) rings of the Airy Disk.

ASMB is funded by the European Research Council H2020-EU.1.1 ICYBOB project (Grant No. 818940). JP and RW acknowledge support by the Czech Science Foundation project no. 19-15008S and by the institutional project RVO:67985815.

References

- Andersen, M., Zinnecker, H., Moneti, A., et al. 2009, *ApJ*, **707**, 1347
- Anderson, J., & van der Marel, R. P. 2010, *ApJ*, **710**, 1032
- Bestenlehner, J. M., Crowther, P. A., Caballero-Nieves, S. M., et al. 2020, *MNRAS*, **499**, 1918
- Beuzit, J. L., Vigan, A., Mouillet, D., et al. 2019, *A&A*, **631**, A155
- Campbell, M. A., Evans, C. J., Mackey, A. D., et al. 2010, *MNRAS*, **405**, 421
- Castro, N., Roth, M. M., Weilbacher, P. M., et al. 2021, *The Messenger*, **182**, 50
- Cignoni, M., Sabbi, E., van der Marel, R. P., et al. 2015, *ApJ*, **811**, 76
- Crowther, P. A. 2019, *Galaxies*, **7**, 88
- Crowther, P. A., Schnurr, O., Hirschi, R., et al. 2010, *MNRAS*, **408**, 731
- Crowther, P. A., Caballero-Nieves, S. M., Bostroem, K. A., et al. 2016, *MNRAS*, **458**, 624
- de Koter, A., Heap, S. R., & Hubeny, I. 1998, *ApJ*, **509**, 879
- De Marchi, G., Paresce, F., Panagia, N., et al. 2011, *ApJ*, **739**, 27
- Evans, C. J., Taylor, W. D., Hénault-Brunet, V., et al. 2011, *A&A*, **530**, A108
- Gibson, B. K. 2000, *MemSAI*, **71**, 693
- Guerrero, M. A., & Chu, Y.-H. 2008, *ApJS*, **177**, 216
- Hunter, D. A., Shaya, E. J., & Holtzman, J. A. 1995, *ApJ*, **448**, 179
- Khorrami, Z., Vakili, F., Lanz, T., et al. 2017, *A&A*, **602**, A56
- Khorrami, Z., Langlois, M., Clark, P. C., et al. 2021, *MNRAS*, **503**, 292
- Langlois, M., Vigan, A., Dohlen, K., et al. 2014, *SPIE*, **9147**, 91479P
- Lennon, D. J., Evans, C. J., van der Marel, R. P., et al. 2018, *A&A*, **619**, A78
- Maire, A.-L., Langlois, M., Dohlen, K., et al. 2016, *SPIE*, **9908**, 990834
- Platais, I., van der Marel, R. P., Lennon, D. J., et al. 2015, *AJ*, **150**, 89
- Platais, I., Lennon, D. J., van der Marel, R. P., et al. 2018, *AJ*, **156**, 98
- Pietrzyński, G., Graczyk, D., Gieren, W., et al. 2013, *NAT*, **495**, 76
- Renzo, M., Zapartas, E., de Mink, S. E., et al. 2019, *A&A*, **624**, A66
- Townsley, L. K., Broos, P. S., Feigelson, E. D., et al. 2006, *AJ*, **131**, 2164
- Zwart, S. F. P., Pooley, D., Lewin, W. H. G., et al. 2002, *ApJ*, **574**, 762

Appendix A: Extra figures

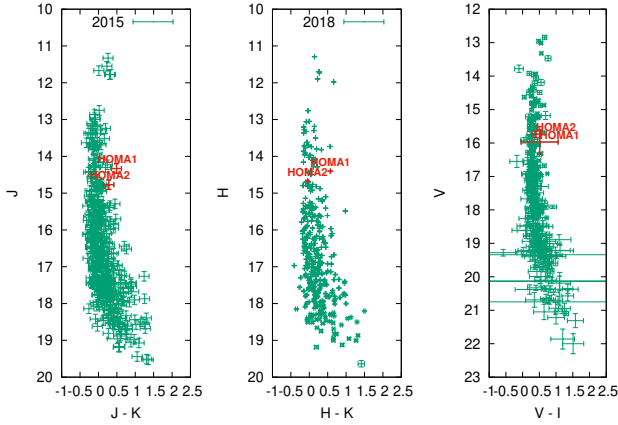


Fig. A.1. Colour–magnitude diagram of 339 reliable sources. The data are from the SPHERE/IRDIS catalogue in the NIR (J , H , K) and HST/WFPC2 data in the visible (V and I) CMD in $J - K$ (left), $H - K$ (middle), and $V - I$ (right). The red symbols shows the HOMAs.

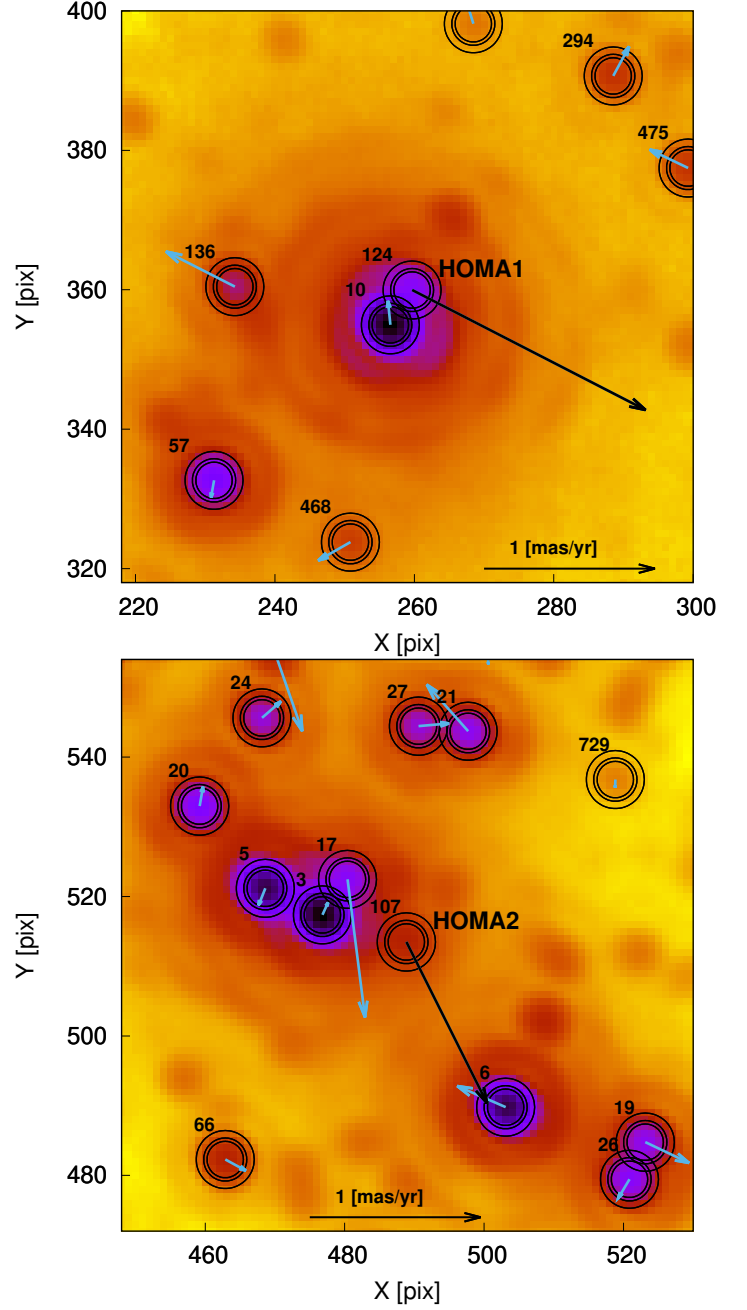


Fig. A.2. Same as Fig. 3, but zoomed in for a FOV of $1'' \times 1''$, centred on HOMA1 (top) and HOMA2 (bottom). The diameter of three black circles around each bright reliable sources ($K < 15$ mag) are the FWHM, and the first dark and first bright rings of the Airy Disk. The ID number of each source (H95, from Hunter et al. 1995) is shown (above and to the left). The green and black arrows indicate the PM of these sources, magnified 100 times.