



**HAL**  
open science

## **Sociodemographic determinants in the evolution of pain in inflammatory rheumatic diseases: results from ESPOIR and DESIR cohorts**

Sushmithadev Kumaradev, Christian Roux, Jérémie Sellam, Serge Perrot,  
Thao Pham, Aline Dugravot, Anna Molto

### ► To cite this version:

Sushmithadev Kumaradev, Christian Roux, Jérémie Sellam, Serge Perrot, Thao Pham, et al.. Sociodemographic determinants in the evolution of pain in inflammatory rheumatic diseases: results from ESPOIR and DESIR cohorts. *Rheumatology*, 2021, 10.1093/rheumatology/keab562/6323005 . hal-03290746

**HAL Id: hal-03290746**

**<https://hal.sorbonne-universite.fr/hal-03290746>**

Submitted on 19 Jul 2021

**HAL** is a multi-disciplinary open access archive for the deposit and dissemination of scientific research documents, whether they are published or not. The documents may come from teaching and research institutions in France or abroad, or from public or private research centers.

L'archive ouverte pluridisciplinaire **HAL**, est destinée au dépôt et à la diffusion de documents scientifiques de niveau recherche, publiés ou non, émanant des établissements d'enseignement et de recherche français ou étrangers, des laboratoires publics ou privés.

1  
2  
3 **Sociodemographic determinants in the evolution of pain in inflammatory rheumatic diseases: results**  
4 **from ESPOIR and DESIR cohorts**  
5

6  
7  
8 Sushmithadev Kumaradev<sup>1,2</sup>, Christian Roux<sup>1,3\*</sup>, Jérémie Sellam<sup>4</sup>, Serge Perrot<sup>5</sup>, Thao Pham<sup>6</sup>, Aline  
9 Dugravot<sup>2\*</sup>, Anna Molto<sup>1,3\*</sup>  
10

11  
12  
13 <sup>1</sup>Clinical epidemiology applied to rheumatic and musculoskeletal diseases, Inserm 1153, Université de  
14 Paris, Paris, France

15  
16 <sup>2</sup>Epidemiology of Ageing and Neurodegenerative diseases, Inserm 1153, Université de Paris, Paris, France

17  
18 <sup>3</sup>Department of Rheumatology, APHP-Centre, Cochin Hospital, Paris, France

19  
20 <sup>4</sup>Department of Rheumatology, APHP-Centre, Saint-Antoine Hospital, Paris, France

21  
22 <sup>5</sup>Pain clinic, APHP-Centre, INSERM U897, Cochin Hospital, Paris, France

23  
24 <sup>6</sup> Department of Rheumatology, APHM, Sainte-Marguerite Hospital, Aix-Marseille Univ., Marseille,  
25 France  
26

27  
28 \*Aline Dugravot and Anna Molto contributed equally to this paper.  
29

30  
31 Address for correspondence: Sushmithadev Kumaradev

32  
33 Université de Paris

34  
35 Inserm U1153 EpiAgeing

36  
37 10 avenue de Verdun

38  
39 75010 Paris, France

40  
41 Email: [sushmithadev.kumaradev@inserm.fr](mailto:sushmithadev.kumaradev@inserm.fr)

42  
43 Orcid id: <https://orcid.org/0000-0002-0418-4287>  
44  
45  
46  
47  
48  
49  
50  
51  
52  
53  
54

## Abstract

**Objective:** To determine whether sociodemographic factors are associated with heterogeneity in pain evolution in inflammatory rheumatic diseases (IRDs) after accounting for disease-specific characteristics in a system with universal health care.

**Methods:** This analysis included the data from two prospective observational cohorts of early IRDs (ESPOIR for early rheumatoid arthritis (RA) and DESIR for early spondyloarthritis (SpA)). Data on pain was measured respectively at 13 and 9 occasions spanning 10 and 6 years of follow-up using Short-Form 36 bodily pain amongst 810 participants of ESPOIR, and 679 participants of DESIR. Linear mixed models were used to characterise differences in pain evolution as a function of age (tertiles), sex, ethnicity, education, marital, and professional status after accounting for disease-related, treatment, lifestyle, and health factors.

**Results:** While transitioning from early (disease duration  $\leq 6$  months for RA and  $\leq 3$  years for SpA) to long-standing disease, differences in pain evolution emerged as a function of age ( $p < 0.001$ ), sex ( $p = 0.050$ ), and ethnicity ( $p = 0.001$ ) in RA, and as a function of age ( $p = 0.048$ ) in SpA; younger age, males, and Caucasians exhibited lower pain in the latter phases of both diseases. Highly educated (RA,  $\beta = -3.8$ ,  $p = 0.007$ ; SpA,  $\beta = -6.0$ ,  $p < 0.001$ ) in both diseases, and Caucasians ( $\beta = -5.6$ ,  $p = 0.021$ ) in SpA presented with low pain early in the disease, with no changes throughout disease course.

**Conclusion:** Those older, females, non-Caucasians and lowly educated have worse pain in early and/or long-standing IRDs despite universally accessible health-care. Early identification of at-risk population and implementation of multi-disciplinary strategies may reduce patient-reported health outcome disparities.

### Trial registration registrations :

**ESPOIR:** ClinicalTrials.Gov, [www.clinicaltrials.gov](http://www.clinicaltrials.gov), NCT03666091

**DESIR:** ClinicalTrials.Gov, [www.clinicaltrials.gov](http://www.clinicaltrials.gov), NCT01648907

**Key words:** Pain evolution, rheumatoid arthritis, spondyloarthritis, sociodemographic factors, pain outcome

### Key messages

- Sociodemographic characteristics attributed to interindividual heterogeneity in either early or long-standing inflammatory rheumatic diseases.
- Low education impact pain at/before disease onset; demographic traits impact pain temporally through disease course.
- Multi-disciplinary treatment of pain should start early in disease targeting those with worse pain outcomes.

### INTRODUCTION

Pain mechanisms in inflammatory rheumatic diseases (IRDs) are multifactorial, broadly classified as inflammatory, related to disease pathophysiology and non-inflammatory, attributed to dysregulation of peripheral and central pain conducting pathways.(1, 2) Pattern of pain evolution in IRDs is characterised by prominently decreasing pain in early phases, probably due to early diagnosis and treatment, followed by pain plateauing in the ensuing years(3, 4) at a level higher than population average.(5, 6) Emerging findings suggest that pain course is not uniform to all; unresolving pain linked probably to non-inflammatory mechanisms was observed among sub-groups of those with IRDs despite optimally controlled inflammation and universally accessible health-care advances.(7) Besides disease severity(8, 9), treatment initiated(10) and individuals' lifestyle and psychological health, sociodemographic characteristics potentially contribute to about 5 – 11% of observed pain heterogeneity in IRDs;(11, 12) older age,(13, 14) female sex,(15-18) non-Caucasian ethnicity(19) and low socio-economic status(20) are associated with increased pain in IRDs; however, consistency of this association throughout disease course remains unanswered.

Previous studies reporting associations between sociodemographic characteristics and pain in IRDs were based on cross-sectional(21, 22) or longitudinal design that either did not account for nonlinear evolution of pain in IRDs,(11) or was not based on repeatedly assessed pain measures,(23) or was limited to those with early (18) or long-standing disease.(13, 14) Aforesaid studies may have missed relevant information on temporal changes in pain associated with the transition from early to long-standing IRDs. Fluctuations in disease-specific characteristics, response to treatment, health, and pain coping behaviours accompanying disease-phase transitioning, could modify the effect of sociodemographic characteristics on pain evolution. For instance, prospective studies on early rheumatoid arthritis (RA) found that sex differences in pain were often apparent with disease continuum(24, 25) and not before

1  
2  
3 six months since symptom onset(18, 26) highlighting the importance of assessing temporal trends in  
4 pain. Thus, exploring the impact of sociodemographic characteristics on pain while transitioning from  
5 early to long-standing IRDs can help understand pain behaviour among vulnerable groups and  
6 implement appropriate treatment strategies quite early in disease course. Accordingly, this study aimed  
7 to assess the evolution of pain in IRDs as a function of sociodemographic characteristics, after accounting  
8 for disease-specific, current treatment, lifestyle, and psychological and health factors using repeated  
9 measures since disease onset up to 6 years or greater.  
10  
11  
12  
13  
14  
15

## 16 **METHODS**

### 17 **Study design and participants**

18 The participants of this study belong to the two ongoing prospective French multicentric cohorts in a  
19 setting of universally accessible health-care: ESPOIR (Etude et Suivi des Polyarthrites Indifférenciées  
20 Récentes)(27) started in 2002/05 and DESIR (DEvenir des Spondylarthropathies Indifférenciées  
21 Récentes)(28) started in 2007/10. ESPOIR comprises 813 participants aged 18 – 70 years with features  
22 suggestive of early RA of less than 6 months duration followed up over 10 years. DESIR comprises 708  
23 participants aged 18 – 50 years, presenting with inflammatory back pain highly probable of  
24 spondyloarthritis (SpA) diagnosis, for a duration ranging 3 months to 3 years followed up for six years.  
25 Participants were biological Disease Modifying Anti-Rheumatic Drugs (DMARDs) naïve at inclusion.  
26 Clinical visits were conducted biannually in the initial 2 years of follow-up and annually henceforth  
27 corresponding to 13 and 9 visits respectively for ESPOIR and DESIR cohorts collecting clinical, biological,  
28 and radiographic information. The study was conducted as per good clinical practice guidelines. Cohort  
29 ESPOIR had obtained ethical approval from ethics committee of Montpellier, France (no. 020307), and  
30 cohort DESIR had obtained ethical approval from Comité de Protection des Personnes Ile de France III.  
31 Signed informed consent was given by participants of both cohorts.  
32  
33  
34  
35  
36  
37  
38  
39  
40  
41  
42  
43  
44

### 45 **Pain**

46 The bodily pain sub-scale of Short Form 36 (SF-36 BP) questionnaire is used as a valid measure for pain  
47 evaluation.(29, 30) In both the cohorts, SF-36 BP comprises two questions evaluating pain intensity and  
48 interference “over last 8 days”. Refer to supplement (supplementary data S1, available at *Rheumatology*  
49 online) regarding SF-36 BP component questions and scoring pattern. Both pain intensity and  
50 interference scores were averaged to obtain SF-36 BP. To ease interpretation, scores were reversed such  
51 that, higher scores correspond to higher pain. Apart from SF-36 BP, a visual analogue scale (VAS)(30, 31)  
52  
53  
54  
55  
56  
57  
58  
59  
60

1  
2  
3 measure ranging from 0 (no pain) to 100 (worst imaginable pain), measuring joint pain intensity when  
4 mobilized (joint mobilisation pain) and when at rest (resting joint pain) for ESPOIR, and a numerical  
5 rating scale (NRS)(31) ranging from 0 (no pain) to 10 (worst imaginable pain) measuring back pain  
6 intensity during day (back pain) and at night (night pain) for DESIR were also considered. NRS scores  
7 were multiplied by ten to assure uniformity in the range of pain measures (0 – 100) across the different  
8 scales. Pain variables were assessed at each clinical visit.  
9  
10  
11  
12  
13

### 14 **Sociodemographic factors**

15 Demographic factors included sex, age at inclusion (continuous, tertiles), and ethnicity (participants self-  
16 identified themselves as Caucasians or Others—those belonging to African, Asian, Maghrebian, or other  
17 origin). Social factors included education, marital, and professional status recorded at inclusion. Highest  
18 attained education was categorised as low education (less than or equal to secondary level) and high  
19 education (more than secondary level). Marital status was grouped as couples (married or cohabiting)  
20 and single (unmarried, divorced and widowed). Professional status was classified as no job (those  
21 without job or retired), blue-collar (laborers, farmers or artisans), and white-collar (intermediate and  
22 executive professionals) workers.  
23  
24  
25  
26  
27  
28  
29  
30

### 31 **Covariates**

32 Disease-related factors included symptom duration and a distinct set of variables for each cohort.  
33 Variables for ESPOIR are: inflammatory marker (erythrocyte sedimentation rate (ESR) in mm/hr), clinical  
34 markers (tender, and swollen joint count based on 28 joints), imaging marker (presence of x-ray changes  
35 fulfilling American College of Rheumatology (ACR) 1987 criteria),(32) biological markers (rheumatoid  
36 factor, and anti-cyclic citrullinated peptide antibodies (ACPA) positivity). Variables for DESIR are:  
37 inflammatory marker (C-Reactive Protein (CRP) in mg/dl), clinical markers (history of peripheral arthritis  
38 (arthritis index), history of peripheral enthesitis (enthesitis index), and number of swollen joints  
39 (synovitis index)), imaging marker (presence of sacroiliitis in magnetic resonance imaging), and biological  
40 marker (human leukocyte antigen (HLA) B27 positivity). Rationale behind the choice of disease-related  
41 factors is given in the supplement (supplementary data S2, available at *Rheumatology* online). Treatment  
42 included current use of non-steroidal anti-inflammatory drugs (NSAIDs), corticosteroids, DMARDs, and  
43 analgesics. Lifestyle factors included body mass index (BMI), current smoking, and alcohol consumption  
44 status. Health factors included the rheumatic disease comorbidity index (RDCI), a validated and weighted  
45 comorbidity index for rheumatological outcomes(33) based on self-declared disease status or medication  
46  
47  
48  
49  
50  
51  
52  
53  
54  
55  
56  
57  
58  
59  
60

1  
2  
3 use history for lung, cardiovascular, fracture, depression (as a measure of psychological health),  
4 diabetes, cancer, and gastrointestinal diseases. Refer to supplement (supplementary data S3, available at  
5 *Rheumatology* online) for RDCI calculation. All covariates were assessed repeatedly at clinical visits and  
6  
7 analysed as time-dependant variables whenever feasible.  
8  
9

## 10 11 **Statistical Analysis**

12 Descriptive statistics comparing population characteristics by tertiles of each pain score were done using  
13 Pearson's Chi square, Fischer's exact and analysis of variance (ANOVA) tests. Both cohorts were analysed  
14 separately using linear mixed models with continuous pain variables as dependent variables and time  
15 since inclusion ( $t_0$ ) as timescale. Based on cubic spline regression, time, time<sup>2</sup>, and time<sup>3</sup> (slope terms)  
16 were incorporated to model nonlinear evolution of pain. Random effects for the intercept and time  
17 allowed individual differences in pain score at intercept and changes in pain over time. Five multivariate  
18 models were examined. Model 1 was adjusted for sociodemographic characteristics and their interaction  
19 with time (slope terms). Thereafter, model 1 was additionally and sequentially adjusted for disease-  
20 related (model 2), treatment (model 3), lifestyle (model 4), and health (model 5) factors. Differences in  
21 the evolution of pain as a function of sociodemographic factors were tested by examining if interaction  
22 of sociodemographic factors with slope terms ( $p_{\text{trajectory}}$ ) improved model fit using the Wald test.  
23 Additionally, above analysis was repeated restricting the analytic sample to those fulfilling ACR 1987  
24 criteria in ESPOIR cohort and American spondyloarthritis international society (ASAS) criteria in DESIR  
25 cohort as a part of sensitivity analysis. All analysis was done using Stata version 15.0 (Stata Corp.). All  
26  $p < 0.05$  were considered significant.  
27  
28  
29  
30  
31  
32  
33  
34  
35  
36  
37  
38  
39

## 40 **RESULTS**

41 Eight hundred and ten of 813 ESPOIR participants and 679 of 708 DESIR participants having at least one  
42 measure for all variables constituted the analytic sample (supplementary figure S1, available at  
43 *Rheumatology* online). The retention rate of the participants at the end of 5 years of follow-up were  
44 61.7% and 58.2% and at the end of follow-up were 53.5% and 43.4% respectively for ESPOIR and DESIR.  
45 74.9% of ESPOIR and 58.2% of DESIR participants have at least 7 measures of all variables considered for  
46 analysis. **Table 1** shows baseline characteristics of the analytic sample of both cohorts. ESPOIR  
47 participants were more likely older (ESPOIR vs. DESIR mean age 48.1 vs. 33.6 years,  $p < 0.001$ ),  
48 predominantly female (76.8% vs. 54.8%,  $p < 0.001$ ), less educated (68.4% vs. 39.9%,  $p < 0.001$ ) and had  
49 higher pain scores (mean SF-36 BP 62.2 vs 56.7,  $p < 0.001$ ) than DESIR participants. Interaction terms  
50  
51  
52  
53  
54  
55  
56  
57  
58  
59  
60

1  
2  
3 assessing the role of disease-related factors (inflammatory and clinical markers) in the evolution of pain  
4 (SF-36 BP) among sociodemographic groups (sex, ethnicity, and education) were not significant  
5  
6 ( $P_{\text{interaction}} > 0.07$ ).  
7  
8  
9

10 Supplementary tables S1 (ESPOIR) and S4 (DESIR), available at *Rheumatology* online, compared baseline  
11 characteristics of participants by tertiles of SF-36 BP at inclusion. In ESPOIR, participants with higher SF-  
12 36 BP had lower education, used analgesics more frequently and had higher ESR, tender and swollen  
13 joint count, BMI, and RDCI. In DESIR, across SF-36 BP tertiles an increasing percentage of non-Caucasians,  
14 low education, corticosteroid, and analgesic use and increasing CRP, peripheral arthritis, and enthesitis  
15 were seen. Results for joint mobilisation, and resting joint pain of ESPOIR (supplementary table S2 and  
16 S3) and back, and night pain of DESIR (supplementary table S5 and S6, all available at *Rheumatology*  
17 online) are provided in the supplement.  
18  
19  
20  
21  
22  
23  
24

### 25 **Results for rheumatoid arthritis (ESPOIR)**

26 Univariate and all five multivariate models showing the association between covariates and pain  
27 variables namely, SF-36 BP, joint mobilisation, and resting joint pain, assessed at inclusion are provided  
28 in the supplement (supplementary table S7, S8, S9, available at *Rheumatology* online). **Figure 1**  
29 represents the 10-year evolution of SF-36 BP (supplementary figure S2 for joint mobilization pain and  
30 supplementary figure S3 for resting joint pain, available at *Rheumatology* online) by sociodemographic  
31 groups in the fully adjusted model. Correspondingly, evolution of differences in pain score for each year  
32 of follow-up are shown in green in **Figure 2** and supplementary table S13, available at *Rheumatology*  
33 online (**Table 2** for joint mobilization and resting joint pain). Pain did not differ by sex at inclusion  
34 ( $p_{t0} \geq 0.38$  for 3 pain scores). Though differential pain evolution by sex was not evident ( $p$  for interaction  
35 between sex and slope terms ( $p_{\text{trajectory}} \geq 0.05$ ), from 2 up to 4 years after inclusion males had lower pain  
36 scores than females. Pain evolution differed across age; although youngest tertile had higher pain at  
37 inclusion ( $\beta = 4.4$ ,  $p = 0.005$  for SF-36 BP), they showed a significant decrease in both SF-36 BP and joint  
38 mobilization pain ( $p_{\text{trajectory}} < 0.001$  for both) over follow-up compared to oldest tertile. No ethnic  
39 differences in pain were observed at inclusion ( $p_{t0} \geq 0.11$ ), but, compared to Caucasians, others ethnic  
40 group showed increased SF-36 BP ( $p_{\text{trajectory}} = 0.001$ ) and resting joint pain ( $p_{\text{trajectory}} = 0.029$ ) over follow-up.  
41 Education-based differences in pain were present since inclusion (low vs high education  $\beta = 3.8$ ,  $p = 0.007$   
42 for SF-36 BP,  $\beta = 4.2$ ,  $p = 0.011$  for joint mobilization pain,  $\beta = 9.0$ ,  $p < 0.001$  for resting joint pain) without  
43 evolutionary changes ( $p_{\text{trajectory}} \geq 0.074$ ). Profession-related differences in pain evolution were not  
44  
45  
46  
47  
48  
49  
50  
51  
52  
53  
54  
55  
56  
57  
58  
59  
60



1  
2  
3 consistent; compared with white-collar workers those with no job had higher resting joint pain at  
4 inclusion ( $\beta=4.5$  for no job and  $\beta=-2.7$  for white-collar workers,  $p=0.048$ ), and increased SF-36 BP  
5 ( $p_{\text{trajectory}}=0.029$ ) in the later years of follow-up.  
6  
7

### 8 9 10 **Results for spondyloarthritis (DESIR)**

11 Univariate and all five multivariate models showing the association between covariates and pain at  
12 inclusion for SF-36 BP, back, and night pain are provided in the supplement (supplementary table S10,  
13 S11, S12, available at *Rheumatology* online). **Figure 3** represents the 6-year evolution of SF-36 BP  
14 (supplementary figure S4 for back pain and supplementary figure S5 for night pain, available at  
15 *Rheumatology* online) by sociodemographic groups in the fully adjusted model. Correspondingly,  
16 evolution of differences in pain score for each year over follow-up are shown in **red in Figure 2** and  
17 supplementary table S13, available at *Rheumatology* online (**Table 3** for back and night pain). Sex  
18 differences in pain assessed at inclusion and pain evolution was not significant ( $p_{t0}\geq 0.09$  and  
19  $p_{\text{trajectory}}\geq 0.32$ ); though from 1 up to at least 4 years of follow-up, males had more decrease in pain scores  
20 than females. Youngest tertile experienced a larger decrease in pain over follow-up than oldest tertile  
21 ( $p_{\text{trajectory}}=0.048$  for SF-36 BP,  $p_{\text{trajectory}}=0.015$  for back pain). Compared to Caucasians, other ethnic group  
22 had higher pain scores at inclusion ( $\beta=5.6$ ,  $p=0.021$  for SF-36 BP) that persisted without evolutionary  
23 changes ( $P_{\text{trajectory}}\geq 0.29$ ) except for back pain ( $P_{\text{trajectory}}=0.009$ ). Higher pain since inclusion persisted  
24 constantly through follow-up in those with low education ( $\beta=6.0$ ,  $p<0.001$  for SF-36 BP,  $\beta=6.3$ ,  $p=0.001$   
25 for back pain and  $\beta=8.0$ ,  $p<0.001$  for night pain at inclusion; all  $p_{\text{trajectory}}\geq 0.167$ ) compared with highly  
26 educated. Compared to singles, couples had higher back ( $\beta=4.7$ ,  $p=0.019$ ) and night pain ( $\beta=7.1$ ,  $p=0.001$ )  
27 at inclusion; nevertheless, they showed improvement in pain over follow-up ( $p_{\text{trajectory}}\leq 0.004$  for both  
28 NRS). Despite non-significant pain evolution by professional categories ( $p_{\text{trajectory}}\geq 0.15$ ), inconsistently,  
29 those with no job had higher back and night pain compared to white-collar workers.  
30  
31  
32  
33  
34  
35  
36  
37  
38  
39  
40  
41  
42  
43  
44

### 45 **Sensitivity analysis**

46 Supplementary figure S6 and S7, available at *Rheumatology* online, show the 10- and 6-year evolution of  
47 SF-36 bodily pain score by sociodemographic groups in the fully adjusted model respectively for those  
48 fulfilling ACR 1987 criteria in ESPOIR cohort (N=686) and ASAS criteria in DESIR cohort (N=470).  
49  
50 Supplementary figure S8, available at *Rheumatology* online, correspondingly shows the evolution of  
51 differences in pain score in both cohorts. The pattern of evolution of all pain scores by sociodemographic  
52  
53  
54  
55  
56  
57  
58  
59  
60

1  
2  
3 factors were in concordance with main analysis (results shown only for SF-36), except that, due to lack of  
4 sufficient power, differences in pain as a function of sex and age over follow-up were not evident.  
5  
6

## 7 8 **DISCUSSION**

9  
10 This longitudinal study based on two cohorts on early RA (ESPOIR) and early SPA (DESIR) with repeatedly  
11 assessed pain over respectively 10 and 6 years presented three salient findings. Firstly,  
12 sociodemographic disparities based on sex, age, ethnicity and education were important contributors of  
13 pain in early (disease duration  $\leq 6$  months for RA and  $\leq 3$  years for SpA) or long-standing IRDs. Of which  
14 ethnic, and educational disparities had clinically meaningful differences in pain scores over follow-up in a  
15 consistent manner when compared with the minimal clinically important difference in SF-36 BP score in  
16 RA corresponding to 4.9.(34) Secondly, differences in pain evolution as a function of demographic factors  
17 emerged while transitioning from early to long-standing disease; those older at early disease phase,  
18 females, and non-Caucasians—having similar pain levels as their counterparts at early phases of  
19 disease—reported higher pain during disease course. Thirdly, impact of social factors on pain is much  
20 earlier to disease-phase transitioning. Educational disparities did not catalyst changes of pain through  
21 disease course; higher pain in those with low education was present since early phases of disease.  
22 Associations between marital, and professional status and pain were not consistent.  
23  
24  
25  
26  
27  
28  
29  
30  
31  
32

33 Present study, compared pain among sociodemographic groups at inclusion when participants were  
34 biological DMARDs naïve and through the disease course, after accounting for disease-specific,  
35 treatment, lifestyle and health characteristics. Importantly, availability of repeatedly assessed data since  
36 early disease up to a span of ten and six years respectively for RA and SpA, allowed to account for time-  
37 varying nature of pain and other covariates, thus, giving an insight into the variations in the association  
38 between sociodemographic factors and pain in both early and long-standing disease. As far as we know,  
39 this is the first study that examined pain evolution in IRDs among socio-economically disparate groups.  
40 By considering evolution of three pain scores for each disease, an overall view limiting biases related to  
41 pain assessment instruments were obtained. Sensitivity analysis done by restricting to those who fulfilled  
42 diagnostic criteria was also in concordance with the above findings.  
43  
44  
45  
46  
47  
48  
49  
50

51 Sex-attributed differences in pain(16, 24), disease activity(35), treatment response(36), and quality of  
52 life(37) are known in IRDs. Underpinning past findings,(15, 38) women of this study (SpA) reported  
53 higher crude pain scores compared with men (supplementary table S10 – S12, available at *Rheumatology*  
54  
55  
56  
57  
58  
59  
60

1  
2  
3 online). However, adjustment for disease-specific characteristics (inflammatory and clinical markers)  
4 attenuated the observed sex differences in pain in early IRD. With ongoing disease and treatment, a  
5 lesser improvement in pain was seen for a short while in women with RA before their pain scores  
6 decreased further to plateau with those of men. Confirming our findings, no sex differences in pain was  
7 reported in early IRD studies,(18, 26) whilst, improvement in pain was better among men in long-  
8 standing IRDs.(15, 25)  
9  
10  
11  
12  
13

14  
15 Impact of age on pain was variable in early and long-standing IRDs. In early RA, our study findings—  
16 higher pain in younger persons—were in disaccord with past studies reporting no association between  
17 pain and age.(17, 26) Discrepancies might be due to differences in adjustment for covariates, as even in  
18 our study, association between age and pain was revealed only after adjustment for disease-related,  
19 lifestyle factors, and comorbidities (supplementary table S7 – S9, available at *Rheumatology* online). In  
20 long-standing disease, our study findings were congruent to that of past(13, 14)—increased pain with  
21 ageing. With disease continuum and appropriate treatment initiation, younger persons experienced  
22 decreasing pain than those older, thereby, establishing an age-based pain gap.  
23  
24  
25  
26  
27  
28  
29

30 Ethnic minorities reported worse levels for most rheumatological outcomes.(11, 19, 39) In this study,  
31 compared with Caucasians, all except joint mobilisation pain were higher among other ethnic groups.  
32 Predominantly, disease-specific inflammation-mediated heightened pain sensitivity of affected joints  
33 mediated joint mobilisation pain than the more general non-inflammatory central pain mechanisms(40),  
34 and thus, did not differ across ethnic groups. Factors yet unravelled, may increase susceptibility of ethnic  
35 minorities to non-inflammatory central pain mechanisms.  
36  
37  
38  
39  
40

41  
42 Across the spectrum of IRDs, low levels of socioeconomic indicators like education, occupation, income  
43 or homeownership were often associated with increased pain.(20) In this study, education-based pain  
44 differences were present even at early disease phase and persisted throughout. Confirmingly,  
45 antecedent studies demonstrated higher pain in those with low education in both early(41) and long-  
46 standing disease.(11, 21, 22, 42) Some showed a gradient in the association between years of education  
47 and pain.(11) This study failed to demonstrate consistent association between pain and profession unlike  
48 antecedent studies.(43) Discrepancies might have risen due to differences in the classification of  
49 professional categories, and use of socio-economic indicators between studies. Family resources like  
50 income and house ownership predicted pain better than occupational status.(21) (44)  
51  
52  
53  
54  
55  
56  
57  
58  
59  
60

1  
2  
3  
4  
5 Social environment both quantitatively in terms of extent of social network and qualitatively in terms of  
6 the emotional and necessary support from entourage(42) or marital life quality(12, 45) play important  
7 roles in the long-term pain outcome in IRDs. In our study, lack of association between pain and marital  
8 status in RA could have stemmed from the fact that assessment of marital status is not synonymous to  
9 marital quality, a better predictor of pain. In early SpA, couples reported more back pain, eventually  
10 coping as well as those single, widowed or separated; given a fairly younger age onset in SpA, family  
11 commitments may have increased the pain susceptibility in early disease.  
12  
13  
14  
15  
16  
17

18 Complexly interacting multiple mechanisms underlie the sociodemographic differences in pain. Firstly,  
19 biological mechanisms can result in altered pain sensitivity and pain modulation; hormonal differences  
20 between sex,(46) and various ethnic origins,(47) age-related degenerative changes of nervous  
21 system,(48) and associated comorbidities(48) can contribute to neuro-biological alterations affecting  
22 pain perception. Secondly, psychological mechanisms by affecting mood, anxiety and depression,  
23 comprehension, acceptance and adherence to health-promoting behaviours, and the utilisation of  
24 coping strategies can influence pain responsivity.(46, 47, 49) Women,(46) ethnic minorities,(47) those at  
25 socioeconomic disadvantage(50) and with poor marital quality(49) often rely on passive coping strategies  
26 and indulge in maladaptive pain behaviour and pain catastrophising.(8, 9) Thirdly, socio-cultural  
27 mechanisms such as pain, religion-, and health-related beliefs (46, 47) and sex, age, and ethnic  
28 differences in the societal expected role and accepted behaviours can affect pain.(51)  
29  
30  
31  
32  
33  
34  
35  
36  
37

38 Limitations included non-availability of information regarding the characteristics, location, and  
39 mechanisms of pain. Pain variables were collected based on the self-report of pain over a short time  
40 span (past 8 days) that may not exactly reflect their past pain experiences. However, pain levels reported  
41 over short time spans are more reliable with regards to the accuracy of reporting rather than compared  
42 to pain reported over long-term. Also, the data is collected in the same manner for all participants at all  
43 time points over follow-up and any inaccuracy in measure will be at random. Overall, this could be  
44 assumed as a good representation of pain of these participants over the years. Pain coping strategies and  
45 behaviours, quality and quantity of social support that can influence pain outcomes were unavailable.  
46 Non-pharmacological pain interventions were not assessed. Due to lack of details regarding monetary  
47 resources per person, impact of socioeconomic disadvantage on pain evolution is insufficiently explored.  
48 Finally, comorbidities and medication use were self-reported and are subject to recall bias.  
49  
50  
51  
52  
53  
54  
55  
56  
57  
58  
59  
60

1  
2  
3  
4  
5 Persistent pain in IRDs despite adequate access to advanced treatment leads to patient dissatisfaction  
6 and secondarily augments health burden. Understanding the evolution of pain in IRDs and its associated  
7 factors seems important to identify those with poor pain prognosis and impart effective multimodal  
8 treatment. Sex, age, ethnic origin, and education play important roles in the pain experienced in early or  
9 long-standing IRDs.  
10  
11  
12  
13  
14  
15  
16  
17  
18  
19  
20  
21  
22  
23  
24  
25  
26  
27  
28  
29  
30  
31  
32  
33  
34  
35  
36  
37  
38  
39  
40  
41  
42  
43  
44  
45  
46  
47  
48  
49  
50  
51  
52  
53  
54  
55  
56  
57  
58  
59  
60

### Acknowledgements

These results were presented at the 33<sup>e</sup> congrès français de Rhumatologie organized by the French Society of Rheumatology (France) as a preregistered oral presentation (O.129). Authors are grateful to all participants of both ESPOIR and DESIR cohorts.

ESPOIR COHORT: An unrestricted grant for the first 5 years was allocated from Merck Sharp and Dohme (MSD). Part of the biological database were supported with two additional grants from INSERM. The ESPOIR cohort study is also supported by the French Society of Rheumatology, Pfizer, Abbvie, Lilly, and more recently Fresenius and Biogen. Additionally, we wish to thank Nathalie Rincheval (Montpellier) who did expert monitoring and data management and all the investigators who recruited and followed the patients (F. Berenbaum, Paris-Saint Antoine, MC. Boissier, Paris-Bobigny, A. Cantagrel, Toulouse, B. Combe, Montpellier, M. Dougados, Paris-Cochin, P. Fardellone et P. Boumier Amiens, B. Fautrel, Paris-La Pitié, RM. Flipo, Lille, Ph. Goupille, Tours, F. Liote, Paris-Lariboisière, O. Vittecoq, Rouen, X. Mariette, Paris Bicetre, P. Dieude, Paris Bichat, A. Saraux, Brest, T. Schaefferbeke, Bordeaux, J. Sibia, Strasbourg).

DESIR COHORT: The Département de la Recherche Clinique et du Développement de l'Assistance Publique-Hôpitaux de Paris sponsored the DESIR cohort. This study is conducted under the umbrella of the French Society of Rheumatology and INSERM (Institut National de la Santé et de la Recherche Médicale). The database management is performed in the department of epidemiology and biostatistics (Professor Paul Landais, D.I.M., Nîmes, France). For the first 10 years of the follow-up of the recruited patients, an unrestricted grant from Pfizer was allocated. We also thank the different regional participating centers: Professor M Dougados (Paris—Cochin B), Professor A Kahan (Paris—Cochin A), Professor P Dieudé (Paris—Bichat), Pr L Gossec (Paris—Pitié-Salpêtrière), Professor F Berenbaum (Paris—Saint Antoine), Professor P Claudepierre (Créteil), Professor M. Breban (Boulogne Billancourt), Dr B. Saint-Marcoux (Aulnay-sous-Bois), Professor P Goupille (Tours), Professor J-F. Maillefert (Dijon), Dr E Darnis (Le Mans), Professor D Wendling (Besançon), Professor B Combe (Montpellier), Professor L Euler-Ziegler (Nice), Professor P Orcel, Professor P Richette (Paris—Lariboisière), Professor P Lafforgue (Marseille), Dr P Boumier (Amiens), Professor M Soubrier (Clermont-Ferrand), Dr N Mehse (Bordeaux), Professor D Loeuille (Nancy), Professor R-M Flipo (Lille), Professor A Saraux (Brest), Dr S Pavy (Kremlin Bicêtre), Professor A Cantagrel (Toulouse), Professor O Vittecoq (Rouen). We also thank URC-CIC Paris Centre for the coordination and monitoring of the study.

1  
2  
3 **Authors' contributions:** SK, CR, AD & AM developed the hypothesis and study design. SK & AD  
4 performed statistical analysis. SK & AD wrote the first and successive drafts of the manuscript. All  
5 authors contributed to review of manuscript and approved the final version to be published. SK, AD, AM  
6 had full access to the data and takes responsibility for the integrity of the data and the accuracy of the  
7 data analysis.  
8  
9  
10

11  
12  
13 **Disclosure statement:** The authors have declared no conflicts of interest.  
14  
15

16 **Funding:** No specific funding was received from any bodies in the public, commercial or not-for-profit  
17 sectors to carry out the work described in this article.  
18  
19  
20

21 **Data availability statement:** The data sets generated and/or analysed during the current study are not  
22 publicly available due to consent restrictions. Programming codes used for statistical analysis during the  
23 current study are available from the corresponding author upon reasonable request.  
24  
25  
26  
27  
28  
29  
30  
31  
32  
33  
34  
35  
36  
37  
38  
39  
40  
41  
42  
43  
44  
45  
46  
47  
48  
49  
50  
51  
52  
53  
54  
55  
56  
57  
58  
59  
60

## References

1. Walsh DA, McWilliams DF. Mechanisms, impact and management of pain in rheumatoid arthritis. *Nat Rev Rheumatol*. 2014;10(10):581-92.
2. Bidad K, Gracey E, Hemington KS, Mapplebeck JCS, Davis KD, Inman RD. Pain in ankylosing spondylitis: a neuro-immune collaboration. *Nat Rev Rheumatol*. 2017;13(7):410-20.
3. Carpenter L, Barnett R, Mahendran P, Nikiphorou E, Gwinnutt J, Verstappen S, et al. Secular changes in functional disability, pain, fatigue and mental well-being in early rheumatoid arthritis. A longitudinal meta-analysis. *Semin Arthritis Rheum*. 2020;50(2):209-19.
4. Carpenter L, Nikiphorou E, Kiely PDW, Walsh DA, Young A, Norton S. Secular changes in the progression of clinical markers and patient-reported outcomes in early rheumatoid arthritis. *Rheumatology (Oxford)*. 2020;59(9):2381-91.
5. Matcham F, Scott IC, Rayner L, Hotopf M, Kingsley GH, Norton S, et al. The impact of rheumatoid arthritis on quality-of-life assessed using the SF-36: a systematic review and meta-analysis. *Semin Arthritis Rheum*. 2014;44(2):123-30.
6. Yang X, Fan D, Xia Q, Wang M, Zhang X, Li X, et al. The health-related quality of life of ankylosing spondylitis patients assessed by SF-36: a systematic review and meta-analysis. *Qual Life Res*. 2016;25(11):2711-23.
7. McWilliams DF, Dawson O, Young A, Kiely PDW, Ferguson E, Walsh DA. Discrete Trajectories of Resolving and Persistent Pain in People With Rheumatoid Arthritis Despite Undergoing Treatment for Inflammation: Results From Three UK Cohorts. *J Pain*. 2019;20(6):716-27.
8. Vergne-Salle P, Pouplin S, Trouvin AP, Bera-Louville A, Soubrier M, Richez C, et al. The burden of pain in rheumatoid arthritis: Impact of disease activity and psychological factors. *Eur J Pain*. 2020;24(10):1979-89.
9. Perrot S, Dieude P, Perocheau D, Allanore Y. Comparison of pain, pain burden, coping strategies, and attitudes between patients with systemic sclerosis and patients with rheumatoid arthritis: a cross-sectional study. *Pain Med*. 2013;14(11):1776-85.
10. Trouvin AP, Curis E, Nicolis I, Beller C, Perrot S. Experience of pain is correlated to treatment profile in patients with rheumatoid arthritis. Differentiating 5 clusters of patients in a national cohort of 1100 women with rheumatoid arthritis. *Joint Bone Spine*. 2020;87(6):675-6.
11. Wolfe F, Michaud K. Assessment of pain in rheumatoid arthritis: minimal clinically significant difference, predictors, and the effect of anti-tumor necrosis factor therapy. *J Rheumatol*. 2007;34(8):1674-83.
12. Waltz M, Kriegel W, van't Pad Bosch P. The social environment and health in rheumatoid arthritis: marital quality predicts individual variability in pain severity. *Arthritis Care Res*. 1998;11(5):356-74.
13. McWilliams DF, Walsh DA. Factors predicting pain and early discontinuation of tumour necrosis factor-alpha-inhibitors in people with rheumatoid arthritis: results from the British society for rheumatology biologics register. *BMC Musculoskelet Disord*. 2016;17:337.
14. Mogard E, Lindqvist E, Bremander A, Bergman S. Risk factors for development and persistence of chronic widespread pain in spondyloarthritis: a population-based two-year follow-up study. *Scand J Rheumatol*. 2019;48(6):460-8.
15. Barnabe C, Bessette L, Flanagan C, Leclercq S, Steiman A, Kalache F, et al. Sex differences in pain scores and localization in inflammatory arthritis: a systematic review and metaanalysis. *J Rheumatol*. 2012;39(6):1221-30.
16. Swinnen TW, Westhovens R, Dankaerts W, de Vlam K. Widespread pain in axial spondyloarthritis: clinical importance and gender differences. *Arthritis Res Ther*. 2018;20(1):156.
17. McWilliams DF, Zhang W, Mansell JS, Kiely PD, Young A, Walsh DA. Predictors of change in bodily pain in early rheumatoid arthritis: an inception cohort study. *Arthritis Care Res (Hoboken)*. 2012;64(10):1505-13.
18. Ten Klooster PM, Vonkeman HE, Oude Voshaar MA, Siemons L, van Riel PL, van de Laar MA. Predictors of satisfactory improvements in pain for patients with early rheumatoid arthritis in a treat-to-target study. *Rheumatology (Oxford)*. 2015;54(6):1080-6.



19. Bruce B, Fries JF, Murtagh KN. Health status disparities in ethnic minority patients with rheumatoid arthritis: a cross-sectional study. *J Rheumatol*. 2007;34(7):1475-9.
20. Vilen L, Baldassari AR, Callahan LF. Socioeconomic burden of pain in rheumatic disease. *Clin Exp Rheumatol*. 2017;35 Suppl 107(5):26-31.
21. Baldassari AR, Cleveland RJ, Jonas BL, Conn DL, Moreland LW, Bridges SL, Jr., et al. Socioeconomic disparities in the health of african americans with rheumatoid arthritis from the southeastern United States. *Arthritis Care Res (Hoboken)*. 2014;66(12):1808-17.
22. Baldassari AR, Cleveland RJ, Luong MN, Jonas BL, Consortium for the Longitudinal Evaluation of African Americans with Early Rheumatoid A, Conn DL, et al. Socioeconomic factors and self-reported health outcomes in African Americans with rheumatoid arthritis from the Southeastern United States: the contribution of childhood socioeconomic status. *BMC Musculoskelet Disord*. 2016;17:10.
23. Andersson ML, Svensson B, Bergman S. Chronic widespread pain in patients with rheumatoid arthritis and the relation between pain and disease activity measures over the first 5 years. *J Rheumatol*. 2013;40(12):1977-85.
24. Ahlstrand I, Thyberg I, Falkmer T, Dahlstrom O, Bjork M. Pain and activity limitations in women and men with contemporary treated early RA compared to 10 years ago: the Swedish TIRA project. *Scand J Rheumatol*. 2015;44(4):259-64.
25. Andersson MLE, Forslind K, Hafstrom I, Group BS. Patients with Early Rheumatoid Arthritis in the 2000s Have Equal Disability and Pain Despite Less Disease Activity Compared with the 1990s: Data from the BARFOT Study over 8 Years. *J Rheumatol*. 2017;44(6):723-31.
26. Dobkin PL, Liu A, Abrahamowicz M, Carrier N, de Brum-Fernandes AJ, Cossette P, et al. Predictors of pain for patients with early inflammatory polyarthritis. *Arthritis Care Res (Hoboken)*. 2013;65(6):992-9.
27. Combe B, Rincheval N. Early lessons from the recent-onset rheumatoid arthritis cohort ESPOIR. *Joint Bone Spine*. 2015;82(1):13-7.
28. Dougados M, Etcheto A, Molto A, Alonso S, Bouvet S, Daures JP, et al. Clinical presentation of patients suffering from recent onset chronic inflammatory back pain suggestive of spondyloarthritis: The DESIR cohort. *Joint Bone Spine*. 2015;82(5):345-51.
29. Ruta DA, Hurst NP, Kind P, Hunter M, Stubbings A. Measuring health status in British patients with rheumatoid arthritis: reliability, validity and responsiveness of the short form 36-item health survey (SF-36). *Br J Rheumatol*. 1998;37(4):425-36.
30. Linde L, Sorensen J, Ostergaard M, Horslev-Petersen K, Hetland ML. Health-related quality of life: validity, reliability, and responsiveness of SF-36, 15D, EQ-5D [corrected] RAQoL, and HAQ in patients with rheumatoid arthritis. *J Rheumatol*. 2008;35(8):1528-37.
31. Sendlbeck M, Araujo EG, Schett G, Englbrecht M. Psychometric properties of three single-item pain scales in patients with rheumatoid arthritis seen during routine clinical care: a comparative perspective on construct validity, reproducibility and internal responsiveness. *RMD Open*. 2015;1(1):e000140.
32. Arnett FC, Edworthy SM, Bloch DA, McShane DJ, Fries JF, Cooper NS, et al. The American Rheumatism Association 1987 revised criteria for the classification of rheumatoid arthritis. *Arthritis Rheum*. 1988;31(3):315-24.
33. England BR, Sayles H, Mikuls TR, Johnson DS, Michaud K. Validation of the rheumatic disease comorbidity index. *Arthritis Care Res (Hoboken)*. 2015;67(6):865-72.
34. Ward MM, Guthrie LC, Alba MI. Clinically important changes in short form 36 health survey scales for use in rheumatoid arthritis clinical trials: the impact of low responsiveness. *Arthritis Care Res (Hoboken)*. 2014;66(12):1783-9.
35. Sokka T, Toloza S, Cutolo M, Kautiainen H, Makinen H, Gogus F, et al. Women, men, and rheumatoid arthritis: analyses of disease activity, disease characteristics, and treatments in the QUEST-RA study. *Arthritis Res Ther*. 2009;11(1):R7.
36. Austad C, Kvien TK, Olsen IC, Uhlig T. Health status has improved more in women than in men with rheumatoid arthritis from 1994 to 2009: results from the Oslo rheumatoid arthritis register. *Ann Rheum Dis*. 2015;74(1):148-55.

- 1
- 2
- 3 37. Webers C, Essers I, Ramiro S, Stolwijk C, Landewe R, van der Heijde D, et al. Gender-attributable
- 4 differences in outcome of ankylosing spondylitis: long-term results from the Outcome in Ankylosing
- 5 Spondylitis International Study. *Rheumatology (Oxford)*. 2016;55(3):419-28.
- 6 38. Mogard E, Bremander A, Lindqvist E, Bergman S. Prevalence of chronic widespread pain in a
- 7 population-based cohort of patients with spondyloarthritis - a cross-sectional study. *BMC Rheumatol*.
- 8 2018;2:11.
- 9 39. Eberly L, Richter D, Comerci G, Ocksrider J, Mercer D, Mlady G, et al. Psychosocial and demographic
- 10 factors influencing pain scores of patients with knee osteoarthritis. *PLoS One*. 2018;13(4):e0195075.
- 11 40. Lee YC, Nassikas NJ, Clauw DJ. The role of the central nervous system in the generation and
- 12 maintenance of chronic pain in rheumatoid arthritis, osteoarthritis and fibromyalgia. *Arthritis Res Ther*.
- 13 2011;13(2):211.
- 14 41. Jiang X, Sandberg ME, Saevarsdottir S, Klareskog L, Alfredsson L, Bengtsson C. Higher education is
- 15 associated with a better rheumatoid arthritis outcome concerning for pain and function but not disease
- 16 activity: results from the EIRA cohort and Swedish rheumatology register. *Arthritis Res Ther*. 2015;17:317.
- 17 42. Evers AW, Kraaimaat FW, Geenen R, Jacobs JW, Bijlsma JW. Pain coping and social support as
- 18 predictors of long-term functional disability and pain in early rheumatoid arthritis. *Behav Res Ther*.
- 19 2003;41(11):1295-310.
- 20 43. Andersson ML, Bergman S, Soderlin MK. The Effect of Socioeconomic Class and Immigrant Status on
- 21 Disease Activity in Rheumatoid Arthritis: Data from BARFOT, a Multi-Centre Study of Early RA. *Open*
- 22 *Rheumatol J*. 2013;7:105-11.
- 23 44. Yang G, Bykerk VP, Boire G, Hitchon CA, Thorne JC, Tin D, et al. Does socioeconomic status affect
- 24 outcomes in early inflammatory arthritis? Data from a canadian multisite suspected rheumatoid arthritis
- 25 inception cohort. *J Rheumatol*. 2015;42(1):46-54.
- 26 45. Reese JB, Somers TJ, Keefe FJ, Mosley-Williams A, Lumley MA. Pain and functioning of rheumatoid
- 27 arthritis patients based on marital status: is a distressed marriage preferable to no marriage? *J Pain*.
- 28 2010;11(10):958-64.
- 29 46. Bartley EJ, Fillingim RB. Sex differences in pain: a brief review of clinical and experimental findings. *Br*
- 30 *J Anaesth*. 2013;111(1):52-8.
- 31 47. Campbell CM, Edwards RR. Ethnic differences in pain and pain management. *Pain Manag*.
- 32 2012;2(3):219-30.
- 33 48. El Tumi H, Johnson MI, Dantas PBF, Maynard MJ, Tashani OA. Age-related changes in pain sensitivity
- 34 in healthy humans: A systematic review with meta-analysis. *Eur J Pain*. 2017;21(6):955-64.
- 35 49. Robles TF, Slatcher RB, Trombello JM, McGinn MM. Marital quality and health: a meta-analytic
- 36 review. *Psychol Bull*. 2014;140(1):140-87.
- 37 50. Poleshuck EL, Green CR. Socioeconomic disadvantage and pain. *Pain*. 2008;136(3):235-8.
- 38 51. Wandner LD, Scipio CD, Hirsh AT, Torres CA, Robinson ME. The perception of pain in others: how
- 39 gender, race, and age influence pain expectations. *J Pain*. 2012;13(3):220-7.
- 40
- 41
- 42
- 43
- 44
- 45
- 46
- 47
- 48
- 49
- 50
- 51
- 52
- 53
- 54
- 55
- 56
- 57
- 58
- 59
- 60

**Table 1. Baseline characteristics of rheumatoid arthritis (ESPOIR) and spondyloarthritis (DESIR) cohorts**

Variables	Rheumatoid arthritis (ESPOIR, N=794)	Spondyloarthritis (DESIR, N=642)
<b>Sociodemographic factors</b>		
Male, n (%)	184 (23.2)	290 (45.2)
Age, m (SD)	48.1 (12.6)	33.6 (8.6)
Caucasian, n (%)	733 (92.3)	577 (89.9)
More than secondary education, n (%)	251 (31.6)	386 (60.1)
Profession, No job, n (%)	32 (4.0)	89 (13.9)
White-collar workers, n (%)	158 (19.9)	90 (14.0)
Blue-collar workers, n (%)	604 (76.1)	463 (72.1)
Married, n (%)	579 (72.9)	418 (65.1)
<b>Disease-related factors</b>		
Symptom duration y, m (SD)	0.6 (0.7)	1.5 (0.9)
Inflammatory markers		
Erythrocyte sedimentation rate, m (SD)	29.4 (24.7)	
C-reactive protein, m (SD)		7.5 (13.0)
Clinical markers		
Tender joint count (0-28), m(SD)	8.4 (7.0)	
Swollen joint count (0-28), m(SD)	7.2 (5.4)	
Arthritis index (0-159), m (SD)		4.2 (8.2)
Synovitis index (0-28), m (SD)		0.1 (0.8)
Enthesitis index (0-39), m (SD)		4.2 (5.8)
Imaging markers, n (%)		
Radiographic changes as per ACR criteria	108 (13.6)	
Sacroiliitis features in MRI		218 (34.0)
Biological markers		
RF positivity, n (%)	334 (42.1)	
ACPA positivity, n (%)	306 (38.5)	
HLA B27 positivity, n (%)		380 (59.2)
Treatment		
Non steroidal anti-inflammatory agents, n (%)	722 (90.9)	597 (93.0)
Corticosteroids, n (%)	156 (19.7)	116 (18.1)
Disease modifying anti rheumatic agents, n (%)	55 (6.9)	87 (13.6)
Analgesics, n (%)	538 (67.8)	406 (63.2)
<b>Lifestyle Factors</b>		
BMI in Kg/m <sup>2</sup> , m (SD)	25.0 (4.5)	23.9 (3.9)
Smoker, n (%)	377 (47.5)	234 (36.5)
Alcohol consumer, n (%)	138 (17.4)	97 (15.1)
<b>Health Factors</b>		
Rheumatic disease comorbidity index, m (SD)	1.1 (1.3)	0.4 (0.7)
<b>Pain Measures</b>		
SF-36 Bodily Pain Scale (0-100), m (SD)	62.2 (20.4)	56.7 (22.0)
Joint mobilisation pain <sup>1</sup> (0-100), m (SD)	54.9 (25.8)	
Resting joint pain <sup>1</sup> (0-100), m (SD)	37.0 (27.5)	
Back pain <sup>2</sup> (0-100), m (SD)		49.8 (27.1)
Night pain <sup>2</sup> (0-100), m (SD)		46.8 (30.3)

ACR, American college of rheumatology; MRI, magnetic resonance imaging; RF, rheumatoid factor; ACPA, anti-cyclic citrullinated peptide antibody; HLA, human leukocyte antigen; BMI, body mass index; SF-36, short form-36

1 Joint mobilisation and resting joint pain are measured using visual analogue scale in ESPOIR cohort

2 Back and night pain are measured using numerical rating scale in DESIR cohort

1  
2  
3  
4  
5  
6  
7  
8  
9  
10  
11  
12  
13  
14  
15  
16  
17  
18  
19  
20  
21  
22  
23  
24  
25  
26  
27  
28  
29  
30  
31  
32  
33  
34  
35  
36  
37  
38  
39  
40  
41  
42  
43  
44  
45  
46  
47  
48  
49  
50  
51  
52  
53  
54  
55  
56  
57  
58  
59  
60

Only characteristics of participants with measures for all variables at baseline are described. 16 out of 810 ESPOIR analytic sample and 37 out of 679 DESIR analytic sample had one or more missing variables at baseline

Table 2. Differences in visual analogue scale pain scores by sociodemographic factors over follow-up in rheumatoid arthritis

Year	Sex		Age		Ethnicity		Education		Profession		Marital status					
	Female vs male		Tertile 2 vs tertile 1	Tertile 3 Vs tertile 1	Others vs Caucasians		Low vs high		Blue-collar vs no job	White-collar vs no job	Single vs couples					
	$\beta$	(95% CI)	$\beta$	(95% CI)	B	(95% CI)	$\beta$	(95% CI)	$\beta$	(95% CI)	$\beta$	(95% CI)				
<b>Joint mobilisation pain</b>																
0	-1.5	(-5.0 ; 1.9)	<b>-5.0</b>	<b>(-8.5 ; -1.4)</b>	<b>-9.0</b>	<b>(-12.6 ; -5.4)</b>	-4.4	(-9.8 ; 1.0)	<b>4.2</b>	<b>(1.0 ; 7.4)</b>	-5.4	(-13.4 ; 2.5)	-4.6	(-11.8 ; 2.7)	1.8	(-1.5 ; 5.0)
1	1.3	(-1.5 ; 4.0)	-1.6	(-4.4 ; 1.2)	<b>-3.1</b>	<b>(-5.9 ; -0.2)</b>	-0.8	(-5.0 ; 3.4)	<b>5.8</b>	<b>(3.2 ; 8.3)</b>	-4.4	(-10.7 ; 1.9)	-3.6	(-9.3 ; 2.1)	2.5	(-0.1 ; 5.0)
2	<b>2.9</b>	<b>(0.0 ; 5.7)</b>	0.5	(-2.4 ; 3.4)	0.4	(-2.5 ; 3.3)	1.3	(-3.1 ; 5.7)	<b>6.6</b>	<b>(4.0 ; 9.3)</b>	-3.8	(-10.2 ; 2.7)	-3.0	(-8.9 ; 2.9)	2.4	(-0.2 ; 5.1)
3	<b>3.6</b>	<b>(0.7 ; 6.5)</b>	1.5	(-1.4 ; 4.5)	1.9	(-1.1 ; 4.9)	2.1	(-2.4 ; 6.6)	<b>6.9</b>	<b>(4.2 ; 9.6)</b>	-3.4	(-9.9 ; 3.1)	-2.7	(-8.7 ; 3.2)	1.9	(-0.8 ; 4.6)
4	<b>3.6</b>	<b>(0.8 ; 6.4)</b>	1.8	(-1.1 ; 4.7)	2.0	(-0.9 ; 5.0)	2.1	(-2.4 ; 6.6)	<b>6.7</b>	<b>(4.1 ; 9.4)</b>	-3.1	(-9.5 ; 3.2)	-2.6	(-8.4 ; 3.2)	1.1	(-1.6 ; 3.7)
5	<b>3.2</b>	<b>(0.3 ; 6.0)</b>	1.5	(-1.4 ; 4.4)	1.2	(-1.8 ; 4.2)	1.5	(-3.1 ; 6.1)	<b>6.3</b>	<b>(3.6 ; 8.9)</b>	-2.9	(-9.2 ; 3.5)	-2.6	(-8.4 ; 3.1)	0.2	(-2.5 ; 2.8)
6	2.6	(-0.4 ; 5.6)	0.9	(-2.1 ; 4.0)	0.1	(-3.1 ; 3.2)	0.7	(-4.3 ; 5.6)	<b>5.6</b>	<b>(2.9 ; 8.4)</b>	-2.5	(-9.2 ; 4.2)	-2.7	(-8.7 ; 3.3)	-0.6	(-3.4 ; 2.2)
7	2.1	(-1.1 ; 5.3)	0.3	(-2.9 ; 3.6)	-0.9	(-4.3 ; 2.4)	-0.1	(-5.4 ; 5.3)	<b>5.0</b>	<b>(2.1 ; 7.9)</b>	-1.9	(-8.9 ; 5.1)	-2.7	(-9.0 ; 3.7)	-1.0	(-4.0 ; 2.1)
8	1.9	(-1.4 ; 5.2)	0.0	(-3.4 ; 3.3)	-1.2	(-4.7 ; 2.2)	-0.4	(-5.8 ; 5.0)	<b>4.5</b>	<b>(1.5 ; 7.5)</b>	-0.9	(-8.0 ; 6.3)	-2.5	(-9.0 ; 3.9)	-0.7	(-3.8 ; 2.4)
9	2.3	(-1.2 ; 5.8)	0.1	(-3.4 ; 3.6)	-0.3	(-3.9 ; 3.3)	0.0	(-5.4 ; 5.5)	<b>4.3</b>	<b>(1.1 ; 7.4)</b>	0.6	(-7.0 ; 8.2)	-2.1	(-9.0 ; 4.7)	0.3	(-2.9 ; 3.6)
10	3.5	(-1.2 ; 8.2)	1.0	(-3.7 ; 5.6)	2.4	(-2.4 ; 7.2)	1.6	(-5.6 ; 8.7)	<b>4.5</b>	<b>(0.2 ; 8.7)</b>	2.7	(-7.7 ; 13.0)	-1.4	(-10.7 ; 7.8)	2.4	(-1.9 ; 6.8)
<i>P traj*</i>	0.052		<0.001				0.169		0.301		0.654		0.153			
<b>Resting joint pain</b>																
0	1.2	(-2.0 ; 4.5)	-0.9	(-4.3 ; 2.4)	<b>-3.3</b>	<b>(-6.7 ; 0.0)</b>	-3.0	(-8.0 ; 2.1)	<b>9.0</b>	<b>(6.0 ; 12.0)</b>	-4.5	(-12.0 ; 3.0)	<b>-7.2</b>	<b>(-14.0 ; -0.3)</b>	1.7	(-1.4 ; 4.7)
1	<b>2.7</b>	<b>(0.1 ; 5.3)</b>	0.7	(-1.9 ; 3.4)	-1.8	(-4.5 ; 0.8)	1.5	(-2.5 ; 5.5)	<b>7.4</b>	<b>(5.0 ; 9.9)</b>	-2.6	(-8.6 ; 3.4)	-5.2	(-10.7 ; 0.2)	0.3	(-2.1 ; 2.7)
2	<b>3.4</b>	<b>(0.7 ; 6.0)</b>	1.6	(-1.1 ; 4.4)	-0.8	(-3.6 ; 1.9)	4.0	(-0.1 ; 8.1)	<b>6.5</b>	<b>(4.0 ; 8.9)</b>	-1.5	(-7.5 ; 4.6)	-3.9	(-9.5 ; 1.6)	-0.7	(-3.2 ; 1.8)
3	<b>3.3</b>	<b>(0.6 ; 6.0)</b>	1.9	(-0.8 ; 4.7)	-0.2	(-3.0 ; 2.6)	<b>5.0</b>	<b>(0.8 ; 9.2)</b>	<b>5.9</b>	<b>(3.4 ; 8.4)</b>	-0.9	(-7.0 ; 5.2)	-3.1	(-8.6 ; 2.4)	-1.5	(-4.0 ; 1.1)
4	<b>2.8</b>	<b>(0.2 ; 5.4)</b>	1.7	(-0.9 ; 4.4)	0.1	(-2.7 ; 2.8)	<b>4.9</b>	<b>(0.8 ; 9.0)</b>	<b>5.8</b>	<b>(3.3 ; 8.2)</b>	-0.7	(-6.5 ; 5.2)	-2.6	(-7.9 ; 2.8)	-1.9	(-4.4 ; 0.5)
5	2.0	(-0.6 ; 4.6)	1.3	(-1.4 ; 3.9)	0.1	(-2.7 ; 2.8)	4.0	(-0.1 ; 8.2)	<b>5.8</b>	<b>(3.4 ; 8.2)</b>	-0.6	(-6.4 ; 5.2)	-2.2	(-7.5 ; 3.1)	-2.1	(-4.6 ; 0.3)
6	1.1	(-1.6 ; 3.9)	0.6	(-2.2 ; 3.4)	-0.1	(-3.0 ; 2.7)	2.9	(-1.6 ; 7.4)	<b>6.0</b>	<b>(3.5 ; 8.5)</b>	-0.4	(-6.4 ; 5.6)	-1.9	(-7.3 ; 3.6)	-2.2	(-4.7 ; 0.4)
7	0.4	(-2.5 ; 3.2)	0.0	(-3.0 ; 2.9)	-0.4	(-3.4 ; 2.6)	1.9	(-2.8 ; 6.6)	<b>6.3</b>	<b>(3.6 ; 8.9)</b>	0.1	(-6.1 ; 6.4)	-1.4	(-7.1 ; 4.2)	-2.0	(-4.7 ; 0.7)
8	-0.1	(-3.0 ; 2.8)	-0.5	(-3.5 ; 2.4)	-0.8	(-3.8 ; 2.3)	1.4	(-3.3 ; 6.2)	<b>6.4</b>	<b>(3.8 ; 9.1)</b>	1.2	(-5.2 ; 7.5)	-0.7	(-6.4 ; 5.0)	-1.7	(-4.4 ; 1.0)
9	0.0	(-3.0 ; 3.0)	-0.7	(-3.8 ; 2.3)	-1.1	(-4.2 ; 2.1)	1.9	(-2.9 ; 6.7)	<b>6.3</b>	<b>(3.6 ; 9.1)</b>	2.9	(-3.7 ; 9.6)	0.4	(-5.6 ; 6.4)	-1.3	(-4.2 ; 1.5)
10	0.8	(-3.4 ; 4.9)	-0.5	(-4.6 ; 3.6)	-1.3	(-5.6 ; 3.0)	3.7	(-2.6 ; 10.0)	<b>6.0</b>	<b>(2.2 ; 9.7)</b>	5.7	(-3.4 ; 14.9)	2.1	(-6.1 ; 10.2)	-0.9	(-4.7 ; 2.9)
<i>P traj*</i>	0.185		0.330				0.029		0.215		0.518		0.104			

CI, confidence interval. In rheumatoid arthritis/ESPOIR cohort: tertile 1 =  $\leq 44.5$  years, tertile 2 = 44.7 – 55.2 years and tertile 3 =  $\geq 55.3$  years. Highlighted values correspond to a p value < 0.05

\* P for difference in pain trajectories/evolution (drawn from testing the interactions between sociodemographic factor and slope terms using Wald test).

Analysis adjusted for sociodemographic factors (sex, age, ethnicity, education, professional and marital status assessed at inclusion) and their interaction with slope terms (time, time<sup>2</sup>, and time<sup>3</sup>), and time-dependant disease-related, treatment, lifestyle, and health factors

**Table 3. Differences in numerical rating scale pain scores by sociodemographic factors over follow-up in spondyloarthritis**

Year	Sex		Age		Ethnicity		Education		Profession		Marital status					
	Female vs male		Tertile 2 vs tertile 1	Tertile 3 Vs tertile 1	Others vs Caucasians		Low vs high		Blue-collar vs no job	White-collar vs no job	Single vs couples					
	$\beta$	(95% CI)	$\beta$	(95% CI)	B	(95% CI)	$\beta$	(95% CI)	$\beta$	(95% CI)	$\beta$	(95% CI)	$\beta$	(95% CI)		
<b>Back pain</b>																
0	3.2	(-0.5 ; 6.9)	-3.0	(-7.5 ; 1.5)	-2.6	(-7.4 ; 2.1)	<b>13.2</b>	<b>(7.5 ; 19.0)</b>	<b>6.3</b>	<b>(2.6 ; 10.0)</b>	2.9	(-4.1 ; 9.8)	1.9	(-3.5 ; 7.3)	<b>-4.7</b>	<b>(-8.6 ; -0.8)</b>
1	<b>3.4</b>	<b>(0.4 ; 6.4)</b>	0.8	(-2.9 ; 4.5)	-0.7	(-4.5 ; 3.2)	<b>4.7</b>	<b>(-0.1 ; 9.5)</b>	<b>6.1</b>	<b>(3.0 ; 9.1)</b>	-0.8	(-6.5 ; 4.8)	-1.1	(-5.5 ; 3.4)	-0.7	(-3.8 ; 2.5)
2	<b>3.7</b>	<b>(0.6 ; 6.8)</b>	2.7	(-1.1 ; 6.5)	1.9	(-2.1 ; 5.9)	3.4	(-1.7 ; 8.5)	<b>6.6</b>	<b>(3.5 ; 9.7)</b>	-3.0	(-8.9 ; 2.8)	-3.6	(-8.2 ; 1.1)	1.5	(-1.7 ; 4.8)
3	<b>4.1</b>	<b>(0.9 ; 7.3)</b>	3.3	(-0.6 ; 7.2)	<b>4.4</b>	<b>(0.3 ; 8.6)</b>	<b>6.1</b>	<b>(0.8 ; 11.4)</b>	<b>7.4</b>	<b>(4.2 ; 10.7)</b>	-4.0	(-10.1 ; 2.1)	<b>-5.0</b>	<b>(-9.8 ; -0.3)</b>	2.4	(-1.0 ; 5.8)
4	<b>4.4</b>	<b>(0.7 ; 8.1)</b>	3.1	(-1.3 ; 7.6)	<b>6.1</b>	<b>(1.5 ; 10.8)</b>	<b>9.5</b>	<b>(3.4 ; 15.6)</b>	<b>8.1</b>	<b>(4.4 ; 11.8)</b>	-4.0	(-10.9 ; 2.9)	-5.0	(-10.4 ; 0.5)	2.7	(-1.2 ; 6.6)
5	<b>4.6</b>	<b>(0.7 ; 8.4)</b>	2.8	(-1.9 ; 7.5)	<b>6.2</b>	<b>(1.3 ; 11.1)</b>	<b>10.6</b>	<b>(4.2 ; 17.0)</b>	<b>8.2</b>	<b>(4.3 ; 12.1)</b>	-3.4	(-10.7 ; 4.0)	-2.8	(-8.6 ; 3.0)	2.9	(-1.2 ; 7.0)
6	4.4	(-0.6 ; 9.4)	2.9	(-3.3 ; 9.1)	4.0	(-2.5 ; 10.4)	6.1	(-2.5 ; 14.7)	<b>7.2</b>	<b>(2.0 ; 12.3)</b>	-2.4	(-12.1 ; 7.3)	2.0	(-6.0 ; 10.0)	3.7	(-1.7 ; 9.0)
<b>P traj*</b>	0.924		<b>0.015</b>		<b>0.009</b>		0.733		0.151		<b>0.004</b>					
<b>Night pain</b>																
0	2.5	(-1.6 ; 6.6)	0.2	(-4.8 ; 5.3)	-1.6	(-6.8 ; 3.7)	<b>10.7</b>	<b>(4.2 ; 17.1)</b>	<b>8.0</b>	<b>(3.9 ; 12.1)</b>	2.6	(-5.2 ; 10.4)	0.9	(-5.1 ; 6.9)	<b>-7.1</b>	<b>(-11.5 ; -2.8)</b>
1	<b>3.6</b>	<b>(0.2 ; 7.0)</b>	-1.4	(-5.5 ; 2.8)	-0.1	(-4.4 ; 4.3)	<b>6.2</b>	<b>(0.8 ; 11.7)</b>	<b>5.5</b>	<b>(2.1 ; 8.9)</b>	0.5	(-5.9 ; 6.9)	-1.9	(-6.9 ; 3.1)	-1.4	(-4.9 ; 2.2)
2	<b>4.4</b>	<b>(1.0 ; 7.9)</b>	-1.0	(-5.3 ; 3.2)	1.2	(-3.3 ; 5.6)	<b>6.4</b>	<b>(0.8 ; 12.0)</b>	<b>5.4</b>	<b>(2.0 ; 8.9)</b>	-1.4	(-8.0 ; 5.1)	-4.4	(-9.5 ; 0.7)	1.0	(-2.6 ; 4.7)
3	<b>4.8</b>	<b>(1.3 ; 8.4)</b>	0.3	(-4.0 ; 4.7)	2.4	(-2.2 ; 6.9)	<b>8.9</b>	<b>(3.0 ; 14.7)</b>	<b>6.8</b>	<b>(3.2 ; 10.4)</b>	-3.2	(-9.9 ; 3.6)	<b>-6.3</b>	<b>(-11.5 ; -1.0)</b>	1.4	(-2.4 ; 5.1)
4	<b>4.7</b>	<b>(0.7 ; 8.7)</b>	1.8	(-3.0 ; 6.7)	3.5	(-1.6 ; 8.6)	<b>11.3</b>	<b>(4.7 ; 18.0)</b>	<b>8.6</b>	<b>(4.6 ; 12.7)</b>	-4.4	(-12.0 ; 3.1)	<b>-7.1</b>	<b>(-13.0 ; -1.1)</b>	1.0	(-3.3 ; 5.3)
5	3.8	(-0.4 ; 8.0)	2.5	(-2.6 ; 7.6)	4.8	(-0.6 ; 10.2)	<b>11.4</b>	<b>(4.5 ; 18.4)</b>	<b>9.9</b>	<b>(5.6 ; 14.1)</b>	-5.0	(-13.0 ; 3.0)	<b>-6.4</b>	<b>(-12.7 ; -0.1)</b>	1.2	(-3.3 ; 5.7)
6	2.1	(-3.3 ; 7.5)	1.4	(-5.3 ; 8.1)	6.3	(-0.7 ; 13.2)	6.9	(-2.4 ; 16.2)	<b>9.5</b>	<b>(3.9 ; 15.1)</b>	-4.8	(-15.3 ; 5.7)	-3.8	(-12.4 ; 4.9)	3.4	(-2.4 ; 9.2)
<b>P traj*</b>	0.608		0.269		0.294		0.167		0.298		<b>0.001</b>					

CI, confidence interval.

In spondyloarthritis/DESIR cohort: tertile 1 = &lt;29.4 years, tertile 2 = 29.4 – 37.6 years, tertile 3 = ≥ 37.7 years

Highlighted values correspond to a p value &lt; 0.05

\* P for difference in pain trajectories/evolution (drawn from testing the interactions between sociodemographic factor and slope terms using Wald test).

Analysis adjusted for sociodemographic factors (sex, age, ethnicity, education, professional and marital status assessed at inclusion) and their interaction with slope terms (time, time<sup>2</sup>, and time<sup>3</sup>), and time-dependant disease-related, treatment, lifestyle, and health factors.

1  
2  
3 **Figure 1. Evolution of SF-36 bodily pain by sociodemographic sub-groups from inclusion up to 10 years**  
4 **in rheumatoid arthritis (ESPOIR cohort).**  
5

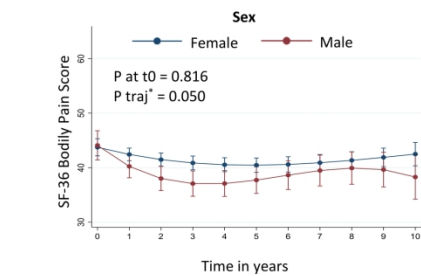
6  
7 \* P for difference in pain trajectories/evolution (drawn from testing the interactions between  
8 sociodemographic factor and slope terms using Wald test). Analysis adjusted for sociodemographic  
9 factors (sex, age, ethnicity, education, professional and marital status assessed at inclusion) and their  
10 interaction with slope terms (time, time<sup>2</sup>, and time<sup>3</sup>), and disease-related (symptom duration,  
11 erythrocyte sedimentation rate, tender and swollen joint count, presence of radiographic structural  
12 lesions, rheumatoid factor positivity, anti-cyclic citrullinated peptide antibody positivity), treatment  
13 (anti-inflammatory and analgesic agents), lifestyle-related (body mass index, smoking, and alcohol  
14 consumption status), and health factors (rheumatic disease comorbidity index). Disease-related,  
15 treatment, lifestyle-related and health factors were time-dependant with some exceptions (symptom  
16 duration and anti-cyclic citrullinated antibody positivity at baseline and their interaction with slope  
17 terms were used in analysis). The tables beneath the figures indicate the total number of participants by  
18 sociodemographic sub-groups contributing at least once to the analysis by every 2 years from year 0 to  
19 10. Estimates came from Margins command in STATA.  
20  
21  
22  
23  
24  
25  
26  
27  
28  
29  
30  
31

32 **Figure 2. Evolution of differences in SF-36 bodily pain by sociodemographic sub-groups in rheumatoid**  
33 **arthritis and spondyloarthritis.** Analysis adjusted for sociodemographic factors (sex, age, ethnicity,  
34 education, professional and marital status assessed at inclusion) and their interaction with slope terms  
35 (time, time<sup>2</sup>, and time<sup>3</sup>), and disease-related, treatment, lifestyle-related, and health factors. The green  
36 line represents the ESPOIR cohort and the red line the DESIR cohort.  
37  
38  
39  
40  
41  
42  
43  
44  
45  
46  
47  
48  
49  
50  
51  
52  
53  
54  
55  
56  
57  
58  
59  
60

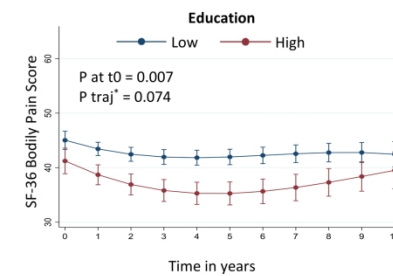
1  
2  
3 **Figure 3. Evolution of SF-36 bodily pain by sociodemographic sub-groups from inclusion up to 6 years**  
4 **in spondyloarthritis (DESIR cohort).**  
5

6  
7 \* P for difference in pain trajectories/evolution (drawn from testing the interactions between  
8 sociodemographic factor and slope terms using Wald test). Analysis adjusted for sociodemographic  
9 factors (sex, age, ethnicity, education, professional and marital status assessed at inclusion) and their  
10 interaction with slope terms (time, time<sup>2</sup>, and time<sup>3</sup>), and disease-related (symptom duration, C-  
11 reactive protein, arthritis, synovitis, and enthesitis indices, presence of sacroilitis, human leukocyte  
12 antigen B27 positivity), treatment (anti-inflammatory and analgesic agents), lifestyle-related (body mass  
13 index, smoking, and alcohol consumption status), and health factors (rheumatic disease comorbidity  
14 index). Disease-related, treatment, lifestyle-related and health factors were time-dependant with some  
15 exceptions (symptom duration, presence of sacroilitis and human leukocyte antigen B 27 positivity at  
16 baseline and their interaction with slope terms were used in analysis). The tables beneath the figures  
17 indicate the total number of participants by sociodemographic sub-groups contributing at least once to  
18 the analysis by every year from year 0 to 6. Estimates came from Margins command in STATA.  
19  
20  
21  
22  
23  
24  
25  
26  
27  
28  
29  
30  
31  
32  
33  
34  
35  
36  
37  
38  
39  
40  
41  
42  
43  
44  
45  
46  
47  
48  
49  
50  
51  
52  
53  
54  
55  
56  
57  
58  
59  
60

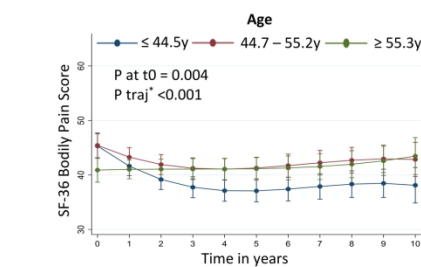




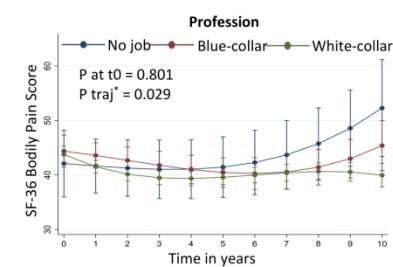
Years	0-2	2-4	4-6	6-8	8-10
<b>Females</b>	622	505	447	421	388
<b>Males</b>	188	154	137	117	109



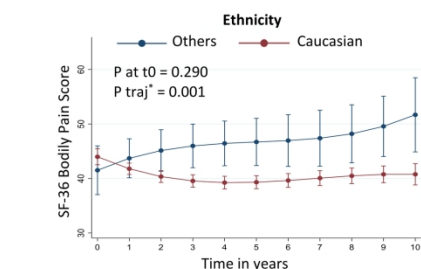
Years	0-2	2-4	4-6	6-8	8-10
<b>Low</b>	555	442	402	372	338
<b>High</b>	255	217	182	166	159



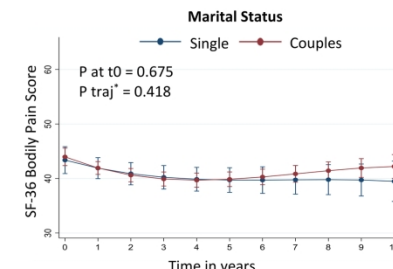
Years	0-2	2-4	4-6	6-8	8-10
<b>≤44 y</b>	289	229	187	169	164
<b>44 – 55 y</b>	253	212	203	189	173
<b>&gt;55 y</b>	268	218	194	180	160



Years	0-2	2-4	4-6	6-8	8-10
<b>No job</b>	32	29	24	25	23
<b>Blue</b>	160	127	115	105	88
<b>White</b>	618	503	445	408	386



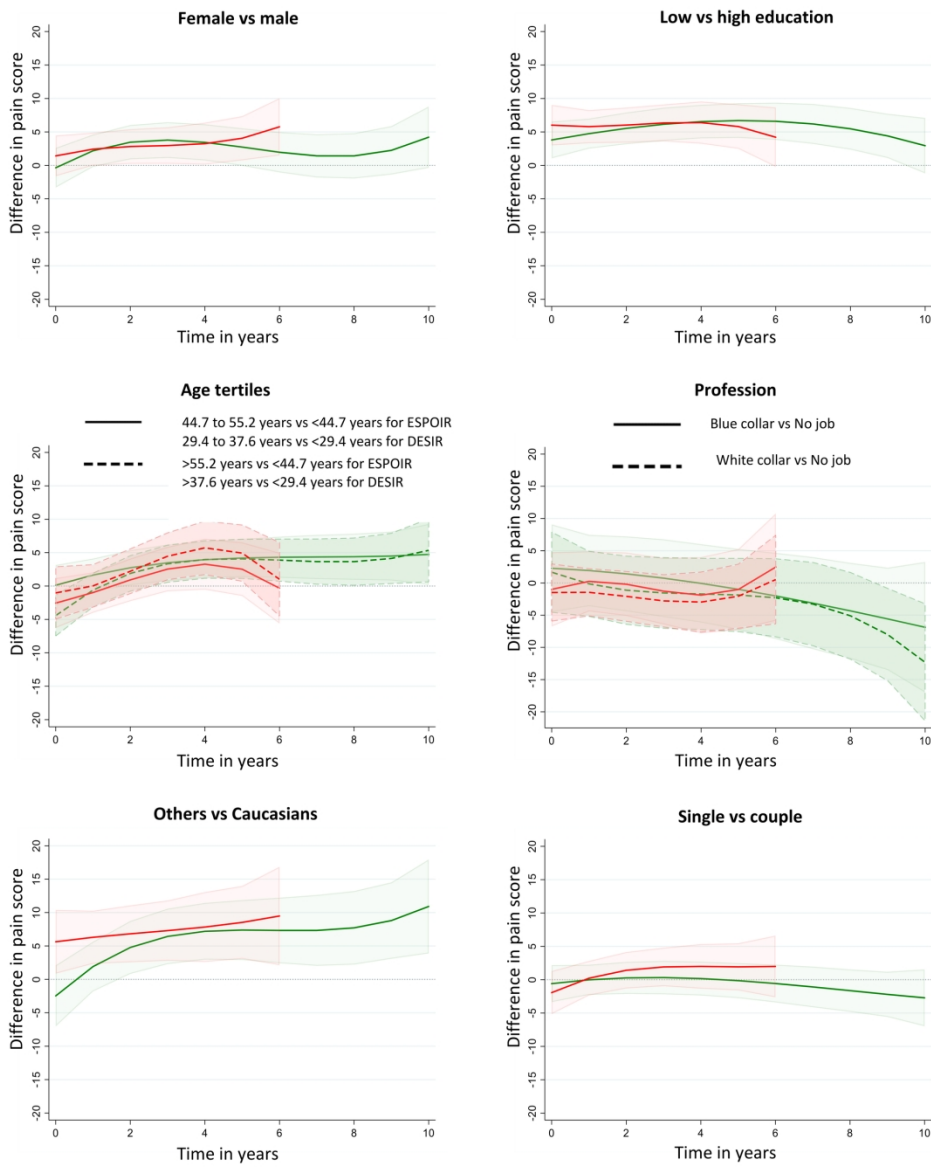
Years	0-2	2-4	4-6	6-8	8-10
<b>Others</b>	62	48	35	30	34
<b>Caucasian</b>	748	611	549	508	463



Years	0-2	2-4	4-6	6-8	8-10
<b>Single</b>	217	168	144	138	124
<b>Couples</b>	593	491	440	400	373

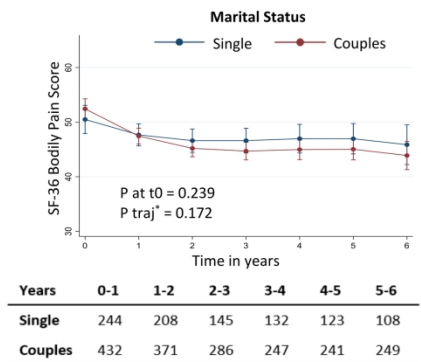
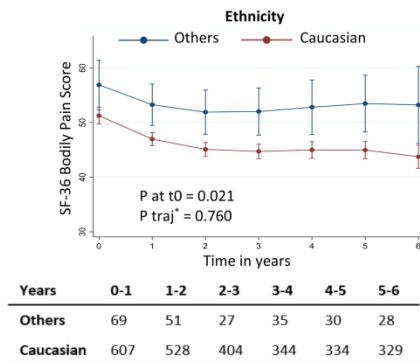
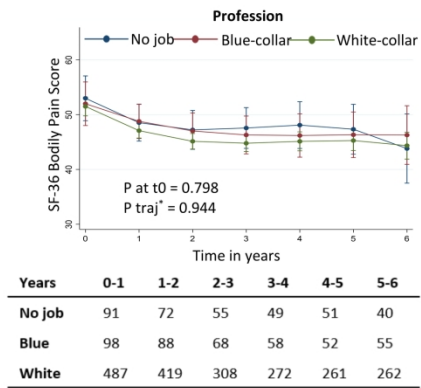
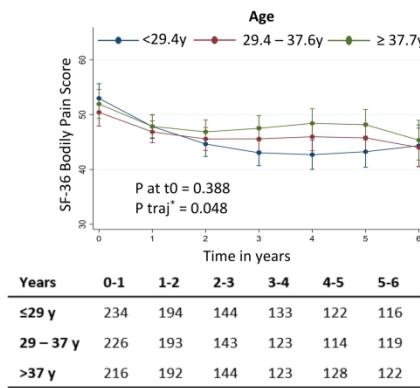
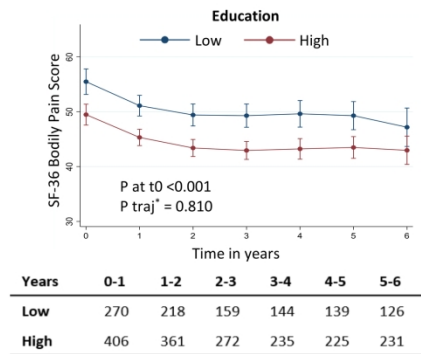
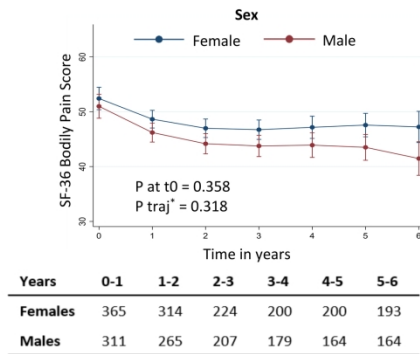
189x261mm (300 x 300 DPI)

1  
2  
3  
4  
5  
6  
7  
8  
9  
10  
11  
12  
13  
14  
15  
16  
17  
18  
19  
20  
21  
22  
23  
24  
25  
26  
27  
28  
29  
30  
31  
32  
33  
34  
35  
36  
37  
38  
39  
40  
41  
42  
43  
44  
45  
46  
47  
48  
49  
50  
51  
52  
53  
54  
55  
56  
57  
58  
59  
60



181x223mm (300 x 300 DPI)

1  
2  
3  
4  
5  
6  
7  
8  
9  
10  
11  
12  
13  
14  
15  
16  
17  
18  
19  
20  
21  
22  
23  
24  
25  
26  
27  
28  
29  
30  
31  
32  
33  
34  
35  
36  
37  
38  
39  
40  
41  
42  
43  
44  
45  
46  
47  
48  
49  
50  
51  
52  
53  
54  
55  
56  
57  
58  
59  
60



193x259mm (300 x 300 DPI)