



**HAL**  
open science

## Epigenetic rewriting at centromeric DNA repeats leads to increased chromatin accessibility and chromosomal instability

Sheldon Decombe, François Loll, Laura Caccianini, Kévin Affannoukoué, Ignacio Izeddin, Julien Mozziconacci, Christophe Escudé, Judith Lopes

### ► To cite this version:

Sheldon Decombe, François Loll, Laura Caccianini, Kévin Affannoukoué, Ignacio Izeddin, et al.. Epigenetic rewriting at centromeric DNA repeats leads to increased chromatin accessibility and chromosomal instability. *Epigenetics & Chromatin*, 2021, 14 (1), 10.1186/s13072-021-00410-x . hal-03336457

**HAL Id: hal-03336457**

**<https://hal.sorbonne-universite.fr/hal-03336457>**

Submitted on 7 Sep 2021

**HAL** is a multi-disciplinary open access archive for the deposit and dissemination of scientific research documents, whether they are published or not. The documents may come from teaching and research institutions in France or abroad, or from public or private research centers.

L'archive ouverte pluridisciplinaire **HAL**, est destinée au dépôt et à la diffusion de documents scientifiques de niveau recherche, publiés ou non, émanant des établissements d'enseignement et de recherche français ou étrangers, des laboratoires publics ou privés.

RESEARCH

Open Access



# Epigenetic rewriting at centromeric DNA repeats leads to increased chromatin accessibility and chromosomal instability

Sheldon Decombe<sup>1,4</sup>, François Loll<sup>1,5</sup>, Laura Caccianini<sup>2</sup>, Kévin Affannoukoué<sup>3,6</sup>, Ignacio Izeddin<sup>3</sup>, Julien Mozziconacci<sup>1</sup>, Christophe Escudé<sup>1</sup> and Judith Lopes<sup>1\*</sup> 

## Abstract

**Background:** Centromeric regions of human chromosomes contain large numbers of tandemly repeated  $\alpha$ -satellite sequences. These sequences are covered with constitutive heterochromatin which is enriched in trimethylation of histone H3 on lysine 9 (H3K9me3). Although well studied using artificial chromosomes and global perturbations, the contribution of this epigenetic mark to chromatin structure and genome stability remains poorly known in a more natural context.

**Results:** Using transcriptional activator-like effectors (TALEs) fused to a histone lysine demethylase (KDM4B), we were able to reduce the level of H3K9me3 on the  $\alpha$ -satellite repeats of human chromosome 7. We show that the removal of H3K9me3 affects chromatin structure by increasing the accessibility of DNA repeats to the TALE protein. Tethering TALE-demethylase to centromeric repeats impairs the recruitment of HP1 $\alpha$  and proteins of Chromosomal Passenger Complex (CPC) on this specific centromere without affecting CENP-A loading. Finally, the epigenetic re-writing by the TALE-KDM4B affects specifically the stability of chromosome 7 upon mitosis, highlighting the importance of H3K9me3 in centromere integrity and chromosome stability, mediated by the recruitment of HP1 $\alpha$  and the CPC.

**Conclusion:** Our cellular model allows to demonstrate the direct role of pericentromeric H3K9me3 epigenetic mark on centromere integrity and function in a natural context and opens interesting possibilities for further studies regarding the role of the H3K9me3 mark.

**Keywords:** Centromere, Chromosomal instability, Epigenetics, Heterochromatin, Histone methylation

## Background

The centromere plays a crucial role in the life cycle of cells, ensuring the faithful transmission of genetic information during cell division. Originally defined as the primary constriction of mitotic chromosomes, it is the structure on which the kinetochore assembles, allowing the cell to split its genetic material into two identical

halves [1]. Centromeres are found in all eukaryote species and some centromere-like structures even exist in archaea and bacteria [2, 3].

Most eukaryotes possess a regional centromere composed of tandemly repeated sequences called satellite DNA. In humans, the main satellite DNA, called  $\alpha$ -satellite, is made of 171 bp monomers that can adopt complex organizational patterns called higher-order repeats (HOR) [4–6], but monomer length and composition can differ a lot in other species. Despite this variability, all centromeres share a similar chromatin organization. The centromere is defined by the presence of a histone H3 variant called CENP-A (in blue on

\*Correspondence: judith.lopes@mnhn.fr

<sup>1</sup> Laboratoire Structure et Instabilité des Génomes, INSERM U1154, CNRS UMR7196, Muséum National d'Histoire Naturelle, 43 rue Cuvier, 75005 Paris, France

Full list of author information is available at the end of the article



© The Author(s) 2021. **Open Access** This article is licensed under a Creative Commons Attribution 4.0 International License, which permits use, sharing, adaptation, distribution and reproduction in any medium or format, as long as you give appropriate credit to the original author(s) and the source, provide a link to the Creative Commons licence, and indicate if changes were made. The images or other third party material in this article are included in the article's Creative Commons licence, unless indicated otherwise in a credit line to the material. If material is not included in the article's Creative Commons licence and your intended use is not permitted by statutory regulation or exceeds the permitted use, you will need to obtain permission directly from the copyright holder. To view a copy of this licence, visit <http://creativecommons.org/licenses/by/4.0/>. The Creative Commons Public Domain Dedication waiver (<http://creativecommons.org/publicdomain/zero/1.0/>) applies to the data made available in this article, unless otherwise stated in a credit line to the data.

(See figure on next page.)

**Fig. 1** Overview of the system. **A** Sketch representing the chromosome 7 with its centromere. Tandem  $\alpha$ -satellite repeats of D7Z1 region are represented with the binding of the TALE-effector fusion protein. Chromatin organization with CENP-A and kinetochore assembly with microtubule attachments, characterizes the core centromere during mitosis. The H3K9me3 epigenetic mark and HP1 protein are the hallmark of the pericentromeric heterochromatin. The CPC, interacting with HP1, is essential to correct erroneous microtubule attachments. **B** Sketch of the different constructs of TALE-fusion proteins used in this study. **C** Western blot against HA revealing TALE-demethylase (~ 210 kDa), TALE-GFP (~ 110 kDa) and  $\alpha$ -tubulin (loading control). The lanes 1, 2 and 5 correspond to transient transfection of cells with the plasmid coding for TALE-demethylase, TALE-demethylase inactive and TALE-GFP, respectively. The + dox (lanes 3 and 6) and - dox (lanes 4 and 7) correspond to stable cell lines with or without doxycycline induction of the TALE-fusion proteins. Due to the different levels of TALE expression between the two systems (transfection and induction), 3  $\mu$ g of total proteins were loaded for transient transfections of TALE-GFP, 30  $\mu$ g for TALE-KDM4 and TALE-KDM4-H188A while 90  $\mu$ g were used for the inducible cell lines. **D** U2OS cells expressing either the TALE-demethylase (top), its point mutant (middle) or the TALE-GFP (bottom). Cells were stained by IF-FISH, TALE proteins are visualized using an anti-HA antibody, CENP-A using an anti-CENP-A antibody and the D7Z1 region using a specific probe generated at the lab. DNA was stained using Hoechst. We note that the TALE-GFP foci are often more intense than those of TALE-demethylases. This effect is due to the higher expression of the TALE-GFP but also to the double revelation of TALE-GFP by the anti-HA antibody and the endogenous GFP in the same channel. A single focal plane is shown for each cell. Scale bar, 10  $\mu$ m

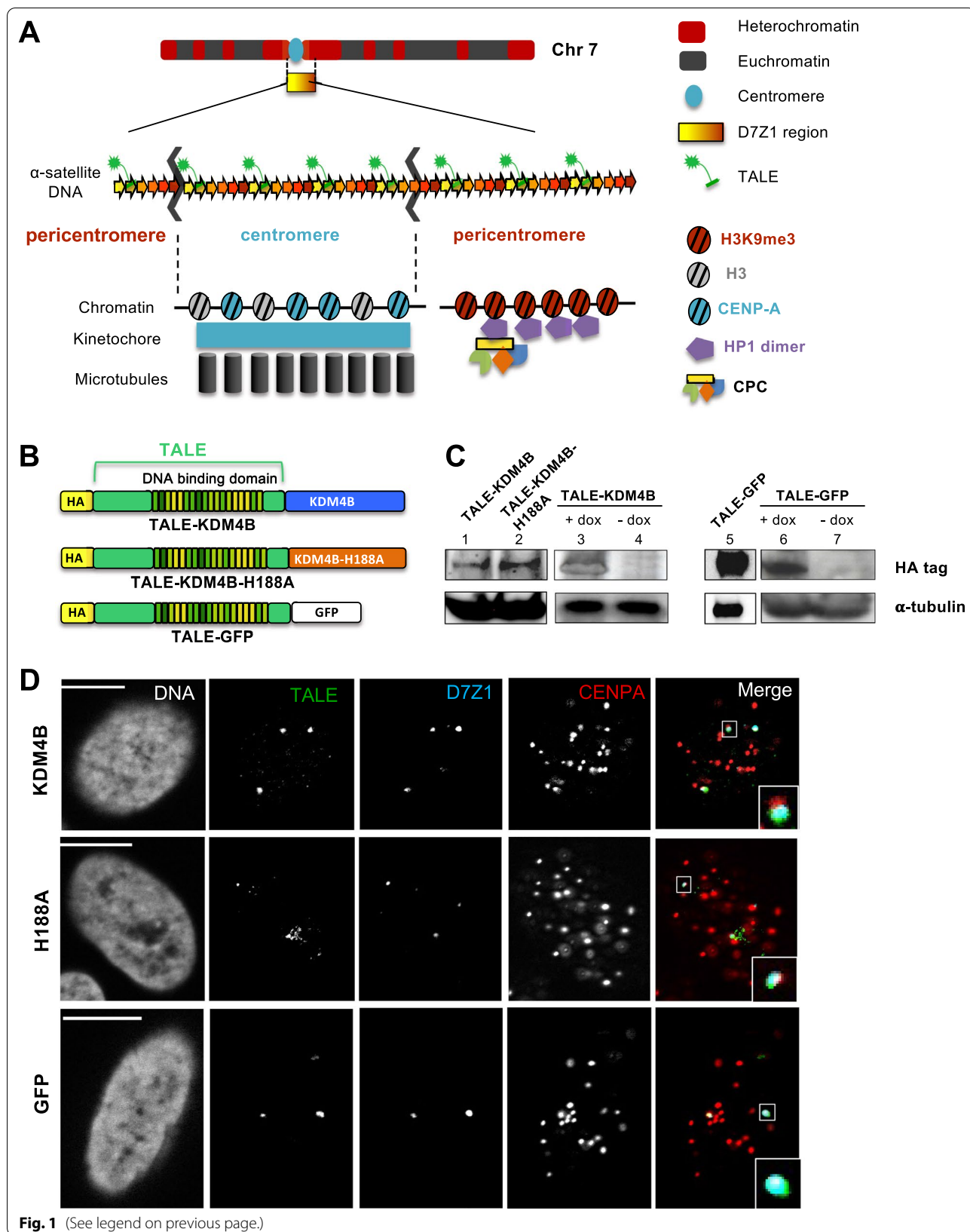
Fig. 1A). This protein acts by recruiting the constitutive centromere-associated network (CCAN) that will serve as a kinetochore assembly platform during mitosis [7, 8]. This domain is usually surrounded by a compact chromatin domain that is enriched in a specific epigenetic mark, the tri-methylation of lysine 9 on histone H3 (H3K9me3, in red on Fig. 1A) that extends on several Mbp, over arrays of  $\alpha$ -satellites and including other satellite DNA families [9]. This epigenetic mark can be bound by heterochromatin protein 1 (HP1, in purple on Fig. 1A) and these two ingredients are the hallmark of the so-called constitutive heterochromatin [10]. HP1 is a family of three proteins ( $\alpha$ ,  $\beta$ ,  $\gamma$ ) which can bind H3K9me3 thanks to a chromodomain. HP1 mediates the recruitment of SUV39H1 methyltransferase that catalyzes the trimethylation of H3K9 which leads to the spreading of the H3K9me3 mark [11]. HP1 can bridge chromatin segments and form liquid droplets in vitro [12, 13]. Whether or not this phenomenon of liquid-liquid phase separation is responsible for the formation of compact heterochromatin domains in vivo is still debated [14]. This last domain is called pericentromere while the CENP-A enriched domain represents the core centromere. This centromere chromatin organization is conserved across the eukaryota, while the DNA sequence is not, which points to an essential functional role of this dual centromeric chromatin organization. Several such roles have been proposed ranging from the faithful segregation of chromosomes during mitosis to the regulation of gene expression [15–17]. While the importance of the CENP-A protein for centromere function is largely documented [8, 18, 19], much less is known regarding the contribution of the pericentromere region and its associated H3K9me3 mark.

Using the histone lysine methyltransferase *Suv39h* double null mice, Peters et al. [20] reported a reduced pericentromeric H3K9 methylation associated with an

increased chromosomal instability. In a similar situation in mouse IMEF cells, McManus et al. [21] also observed mitotic defects. Therefore, preventing H3K9 trimethylation seems to result in defects in the preservation of genome stability. Another approach that can be used to reveal the importance of the H3K9me3 mark consists in removing this mark using a H3K9-specific histone lysine demethylases [22]. In breast tumors exhibiting an overexpression of the H3K9-specific histone lysine demethylase KDM4B, Slee et al. [23] observed an increased aneuploidy and chromosomal instabilities. An interesting approach by Molina et al. [24] used another histone lysine demethylase, KDM4D, to remove H3K9me3 which resulted in increased mitotic defects and in perturbation of the chromosomal passenger complex (CPC) localization to inner centromeres. During mitosis, the CPC is required to correct erroneous microtubule attachments through the action of Aurora B [25, 26]. In this last approach, the activity of the histone demethylase was targeted to heterochromatin by fusing the enzyme to the N-terminal domain of SUV39H1 which targets the H3K9me3 mark.

In all aforementioned studies, the removal of the H3K9me3 mark is expected to affect all heterochromatic regions of the genome. Targeted modifications of epigenetic marks to pericentromeric heterochromatin have up to now only been obtained using an artificial system in which a synthetic array of  $\alpha$ -satellite DNA of several tens of kb can mimic de novo centromere assembly and give rise to the formation of a human artificial chromosome (HAC) [27, 28]. The authors showed that long-term tethering of histone lysine demethylase to HAC, reduced centromere protein levels and triggered HAC mis-segregation, maybe resulting from a decrease of CENP-A level below a critical threshold.

Here, we propose a novel approach, in which the demethylation of H3K9 is targeted to the centromeric



region of a specific human chromosome. Although  $\alpha$ -satellite monomers usually share at least 60% identity, chromosome-specific variations in the composition and organization of monomers have been described [6, 29]. Exploiting these variations, we designed a DNA sequence binding domain based on the transcription activator-like effector (TALE) system [30–32], that specifically targets the D7Z1 array of  $\alpha$ -satellite repeats known to be present in the centromeric region of human chromosome 7. We observed that the TALE-fusion protein was specifically recruited at the centromeres of chromosomes 7 and that the targeting of the active histone demethylase resulted in a local decrease of H3K9me3 and H3K4me2 without affecting CENP-A loading. We determined the effect of this H3K9me3 loss on chromatin organization using both epifluorescence microscopy and super-resolution imaging. Monitoring the corresponding TALE signal also suggests a better accessibility of DNA upon H3K9me3 removal. We further showed that recruitment of the HP1 protein was reduced, inducing in turn a decrease of the chromosomal passenger complex (CPC) at the TALE foci. Finally, we demonstrated that the targeting of the TALE-demethylase to the pericentromeric heterochromatin of chromosome 7 affects the stability of this specific chromosome upon mitosis. This experimental system opens interesting possibilities for further studies regarding the role of the H3K9me3 mark.

## Results

### Targeting $\alpha$ -satellite repeats from a specific human chromosome

Our aim was to modify the centromeric chromatin on a specific pair of chromosomes by fusing the full-length cDNA coding the human histone lysine demethylase KDM4B (3.3 kbp) to the DNA-binding domain of a TAL effector. This domain was designed to bind an 18-bp motif that is present in the D7Z1 array of  $\alpha$ -satellite repeats known to be present in the centromeric region of human chromosome 7 (Fig. 1A). According to the models for  $\alpha$ -satellite genome content that have been integrated in the h38 version of the human genome assembly, the D7Z1 region is made of more than 2500 repeats of an HOR made of 6  $\alpha$ -satellite monomers, covering about 2.6 Mbp and contains at least 2200 target sequences for the TALE. This region is flanked on the short arm side by another array of repeats called D7Z2 that is much shorter (about 250 Kbp). ChIP experiments have shown that the centromere of chromosome 7 is located on the D7Z1 array of repeats [23, 33]. Nevertheless, because D7Z1 extends over the core centromere, we expect the TALE to bind the D7Z1 repeats at both the centromere and the pericentromeric region of chromosome 7 (see below).

As controls, we also fused the TALE to the full-length cDNA of the human histone lysine demethylase with the H188A mutation that makes the enzyme catalytically inactive (TALE-KDM4B-H188A) [34] or to the cDNA of the GFP protein (TALE-GFP). A HA tag was fused to the N-terminal part of each TALE for visualization using a specific antibody (Fig. 1B). These constructs were expressed in U2OS cells by transient transfection of the corresponding plasmid. We also established inducible U2OS cell lines expressing either the TALE-demethylase or TALE-GFP in response to doxycycline. This inducible system was developed to determine the chromosome 7 instability in a large number of cells after mitosis. The expression of our TALE constructs in both systems was confirmed by western blot (Fig. 1C). Concerning the transient transfection, the expression of the TALE-KDM4B and TALE-KDM4B-H188A fusion proteins are similar but much lower than the expression of TALE-GFP (lanes 1, 2 and 5 in Fig. 1C). This difference of expression probably results from a higher number of plasmid copies introduced in the nucleus after transient transfection of the TALE-GFP plasmid which is smaller than the two other plasmids. This size difference is explained by a smaller size of TALE-GFP (~110 kDa) compared to TALE-demethylase (~210 kDa). We also observed that the TALE-demethylase fusion proteins (WT and inactive) present additional bands below the major band suggesting a weaker stability of these proteins in comparison with the TALE-GFP for which a single band is detected (data not shown).

We first wanted to demonstrate the specific binding of our TALE targeting the  $\alpha$ -satellites of chromosome 7. For that, we transiently transfected U2OS cells with plasmids expressing the different TALE-fusion proteins and fixed the cells after 24 h. We then performed immunofluorescence coupled to fluorescent in situ hybridization (IF-FISH) to investigate the localization of the TALE proteins (revealed by an anti-HA antibody) with respect to the centromeric region of chromosome 7 (labeled with a probe targeting the D7Z1 repeats) and the core centromere (visualized by an anti-CENP-A antibody) (Fig. 1D). Although the images sometimes showed a faint staining of the nucleolus, four TALE foci were observed in most of the nuclei, overlapping with the D7Z1 signals. These numbers are in accordance with the fact that U2OS cells are mostly tetraploids. We estimated that 93% (316/340) of TALE foci overlapped with D7Z1 foci. We noticed that foci of the inactive TALE-KDM4B-H188A are often weaker than those of the TALE-KDM4B and TALE-GFP, in particular after the FISH treatment that alters immunofluorescent signal. The four foci are easily visible by immunofluorescence experiments and are very close or overlapping CENP-A foci in most cells

(See figure on next page.)

**Fig. 2** Effects of TALE-demethylase expression on H3K9 methylation and H3K4me2. U2OS cells expressing the TALE-demethylase (top) or the catalytically inactive mutant (bottom). DNA is visualized using Hoechst, the TALE (shown in green) is revealed with an anti-HA antibody and H3K9me3 (**A**), H3K9me2 (**B**) or H3K9me1 (**C**) or H3K4me2 (**D**) (shown in red) is revealed with a specific antibody. Right panels: boxplots showing the signal normalized at the TALE-demethylase foci (blue) (H3K9me3:  $n = 215$  nuclei in 3 experiments, H3K9me2/H3K9me1:  $n = 128$  nuclei in 2 experiments, H3K4me2:  $n = 66$  nuclei) or at the point mutant (orange) (H3K9me3:  $n = 129$  nuclei in 3 experiments, H3K9me2/H3K9me1:  $n = 123$  nuclei in 2 experiments, H3K4me2:  $n = 41$  nuclei). Signal in the foci is normalized by the global signal in the nucleus. The box represents 50% of data points and the whiskers extend up to 1.5 times the interquartile range, the horizontal bar represents the median. The dashed line represents a signal normalized equal to one.  $p$  values were computed using a Wilcoxon–Mann–Whitney test ( $*p < 0.05$ / $**p < 0.01$ / $***p < 0.001$ / $****p < 0.0001$ ). A single focal plane is shown for each cell. Scale bar, 10  $\mu\text{m}$

(Additional file 1: Fig. S1). We estimated that 81.5% (277/340) of TALE foci partially overlap with CENP-A foci and we determined that the percentage of the volume of TALE foci covered by CENP-A is on average 25% (Additional file 1: Fig. S2). The CENP-A foci were slightly smaller than the TALE-D7Z1 signals (see inset in Fig. 1D) and the median volume of the TALE foci overlapping with D7Z1 foci is higher (62%) than that occupied by CENP-A (25%, Additional file 1: Fig. S2). These results indicate that targeting of the centromeres from chromosomes 7 was successfully achieved and suggest that TALEs bind on a part of the core centromere as well as on the adjacent pericentromeric region.

#### TALE protein fused to histone demethylase specifically removes H3K9me3 from chromosome 7 centromere

Having validated the targeting activity of our construct, we next tested the efficiency of the demethylase activity brought by the TALE-KDM4B. To do so, the labeling of H3K9me3 revealed by immunofluorescence was quantified in cells either transfected with the active TALE-KDM4B or with the inactive TALE-KDM4B-H188A. For each condition, the 3D fluorescence images of hundreds of nuclei were analyzed with the software Tools for Analysis of Nuclear Genome Organization (TANGO) [35]. This tool was developed for quantitative study of large sets of images and statistical processing with R. Quantification of H3K9 tri-methylation levels was performed over the detected TALE foci in each nucleus and the signal was normalized by taking into account the signal present in the whole nucleus. Our experiments revealed a statistically significant loss of H3K9me3 of 19.6% ( $p < 0.0001$ , Wilcoxon–Mann–Whitney test) at the binding sites of the TALE-demethylase, in comparison with the TALE-demethylase inactive (Fig. 2A). Our control using an inactive demethylase ensures that this loss is mediated by the histone lysine demethylase activity and is not merely a consequence of the binding of the TALE protein.

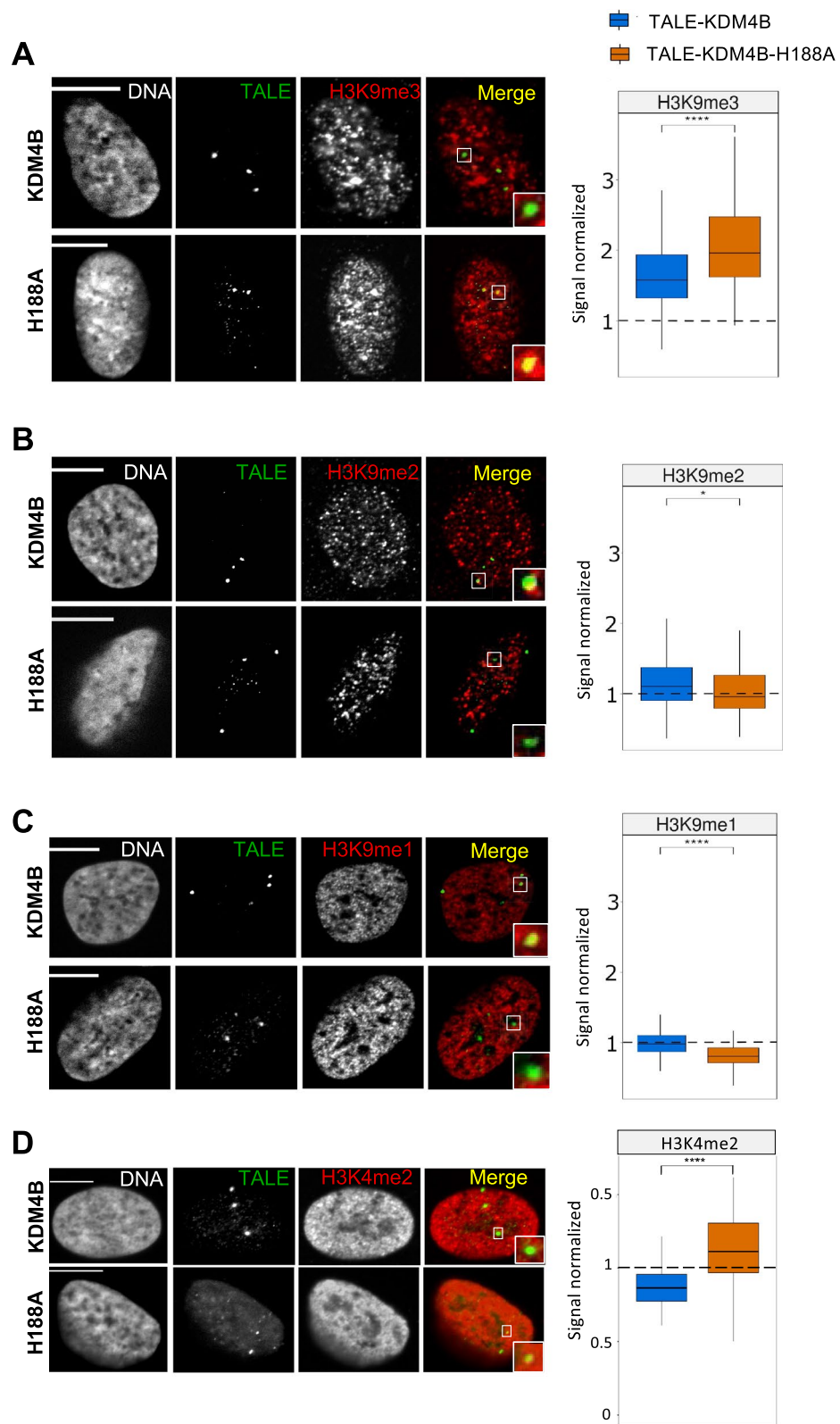
Using the same method, we also measured the levels of H3K9 di- and mono-methylation with specific antibodies. Both levels of H3K9me2 and H3K9me1 increased (by

15.3% and 21.5%, respectively) in response to the removal of one methyl group from H3K9me3 (Fig. 2 B, C). We concluded that the recruitment of the TALE-demethylase at the  $\alpha$ -satellite repeats on D7Z1 region induced a significant loss of tri-methylation of H3K9 at the targeted sites, associated with an increase of di- and mono-methylation of H3K9.

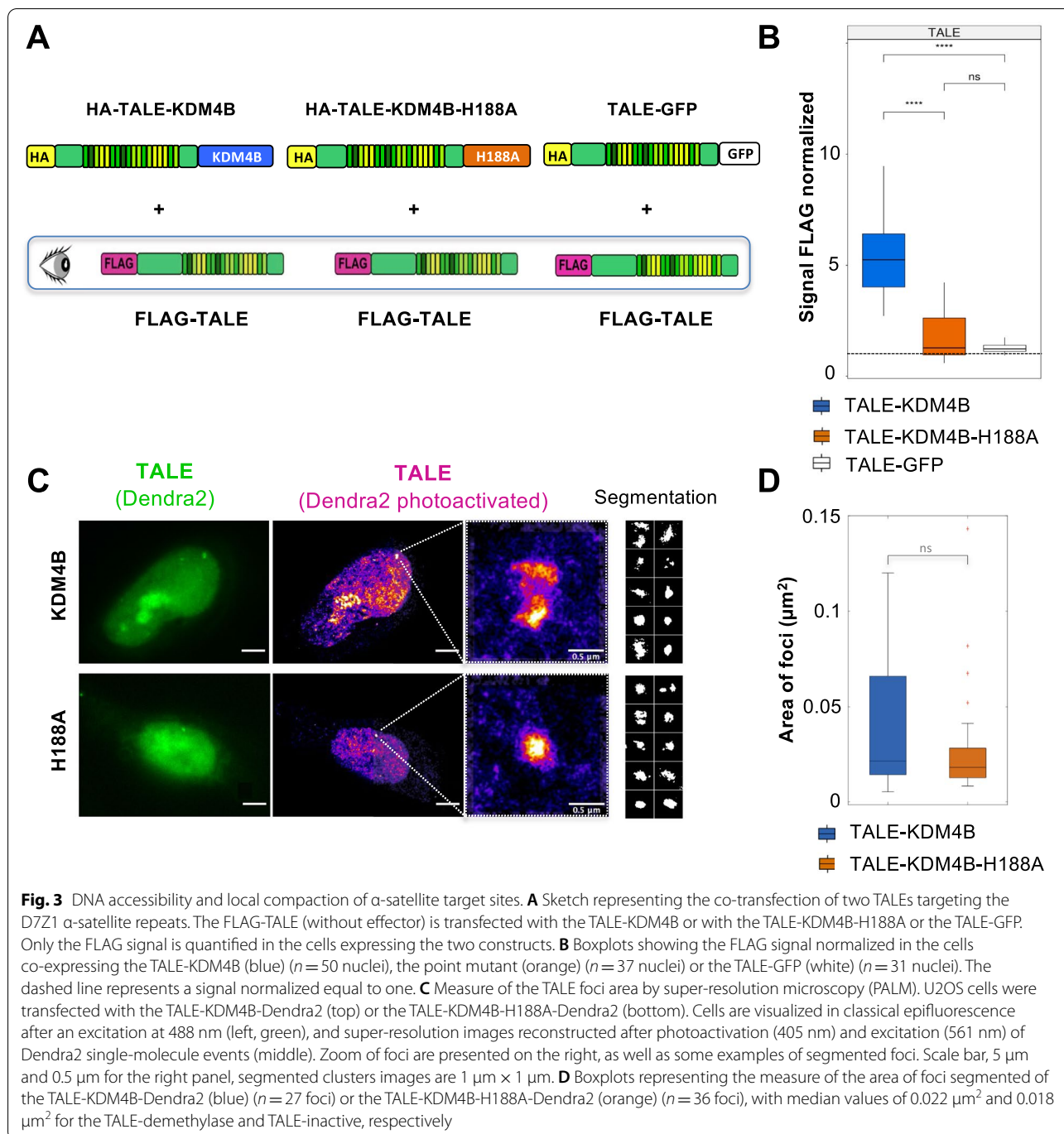
We wondered if the removal of H3K9me3 was associated with other epigenetic changes in the D7Z1 region. We measured the amount of H3K4me2 at the binding sites of TALE-KDM4B and TALE-KDM4B-H188A. A significant decrease of H3K4me2 was quantified in cells expressing the TALE-demethylase in comparison with the inactive TALE (Fig. 2D) ( $p < 0.0001$ , Wilcoxon–Mann–Whitney test). In a study published by Martins et al. [36], the targeting of the methyltransferase EZH2 on a human artificial chromosome leads to a deposition of the H3K27me3 mark which is accompanied by a drop in the amount of H3K4me2. We wanted to determine whether the decrease in H3K4me2 observed with the TALE-demethylase expression was due to an enrichment of H3K27me3 in the D7Z1 region. Immunofluorescence experiments performed on our U2OS cells revealed that no H3K27me3 signal was detected in any nuclei (in transfected and non-transfected cells), confirming a study showing that several osteosarcoma cell lines, including U2OS, have a loss-of-function of polycomb repressive complex 2 (PRC2) [37]. As PRC2 complex silences gene expression by adding repressive H3K27me3 marks, we concluded that the decrease in H3K4me2 is a direct consequence of H3K9me3 removal triggered by the TALE-demethylase rather than an induced trimethylation of H3K27.

#### Removal of H3K9me3 increases the DNA accessibility but does not change the size of TALE foci

The H3K9me3 epigenetic mark is thought to play a major role in the chromatin accessibility and compaction by recruiting HP1 and the methyltransferases SUV39H and indirectly by favoring the hypoacetylation of histone H3 [38]. We thus wondered how the decrease of H3K9me3 triggered by the TALE-demethylase, affects



**Fig. 2** (See legend on previous page.)



the chromatin accessibility and compaction. We noticed that foci of the inactive TALE-KDM4B-H188A seem often less intense than those of the TALE-demethylase, suggesting a higher recruitment of the TALE-demethylase leading to more intense foci.

In order to measure this effect, we estimated the chromatin accessibility of the targeted sites by measuring the labeling intensity of the TALE proteins in these foci. We

co-transfected U2OS cells with two distinct plasmids, the first one that expresses either the TALE-KDM4B, the TALE-KDM4B-H188A or the TALE-GFP (TALEs with HA tag) and the second one that expresses the TALE protein without effector (TALE with FLAG tag) (Fig. 3A). Both TALEs target the same sequence on  $\alpha$ -satellites of chromosome 7. We detected the presence of the two co-transfected plasmids in U2OS cells by using dedicated



antibodies against HA and FLAG tags. We measured the normalized FLAG signal of the TALE without effector, in the three different cellular contexts (in presence of the TALE-demethylase or TALE-KDM4B-H188A or TALE-GFP). The signal of the FLAG antibody is much higher in the context of H3K9me3 decrease, with a normalized signal of 5.4 in the presence of the TALE-demethylase (Fig. 3B). This normalized FLAG signal drops to 1.8 and 1.3 in presence of the TALE-KDM4B-H188A and the TALE-GFP, respectively. The 3 to fourfold increase of the FLAG signal suggests that the partial removal of H3K9me3 leads to a higher accessibility of the TALE to its binding sites.

We next asked whether the increased accessibility of the targeted sites is associated with change in chromatin compaction that would result in an increase of the TALEs foci volume. We turned to super-resolution microscopy and used photo-activated localization microscopy (PALM) in order to obtain images with a resolution beyond the diffraction limit that would allow us to monitor slight changes in the foci volumes. We fused the Dendra2 protein to the C-terminal part of the TALE-demethylase and TALE-KDM4B-H188A. Dendra2 is a photoconvertible green-to-red fluorescent protein, commonly used for single-molecule microscopy super-resolution imaging (SMLM). We identified several foci of TALE-demethylase and TALE-KDM4B-H188A and measured the area of these foci (Fig. 3C). While demethylated foci showed a higher size variability, we did not detect a significative change of the average size of the foci ( $p=0.13$ , Wilcoxon rank sum test, Fig. 3D). We could not rule out that the higher size variability of demethylated foci could be explained by the copy number variation of plasmids expressing the TALE-demethylase in the cells.

Taken together, the results obtained with the two approaches above, reveal that the higher accessibility of the  $\alpha$ -satellites DNA repeats induced by the removal of H3K9me3 is not associated with a visible decompaction of the chromatin. The quantification of the D7Z1 arrays detected by FISH experiments, confirms these data, since no variation was measured between the volumes of the D7Z1 foci, in the presence of the TALE-demethylase or TALE-GFP (data not shown).

### Removal of pericentromeric H3K9me3 results in chromosome-specific instability

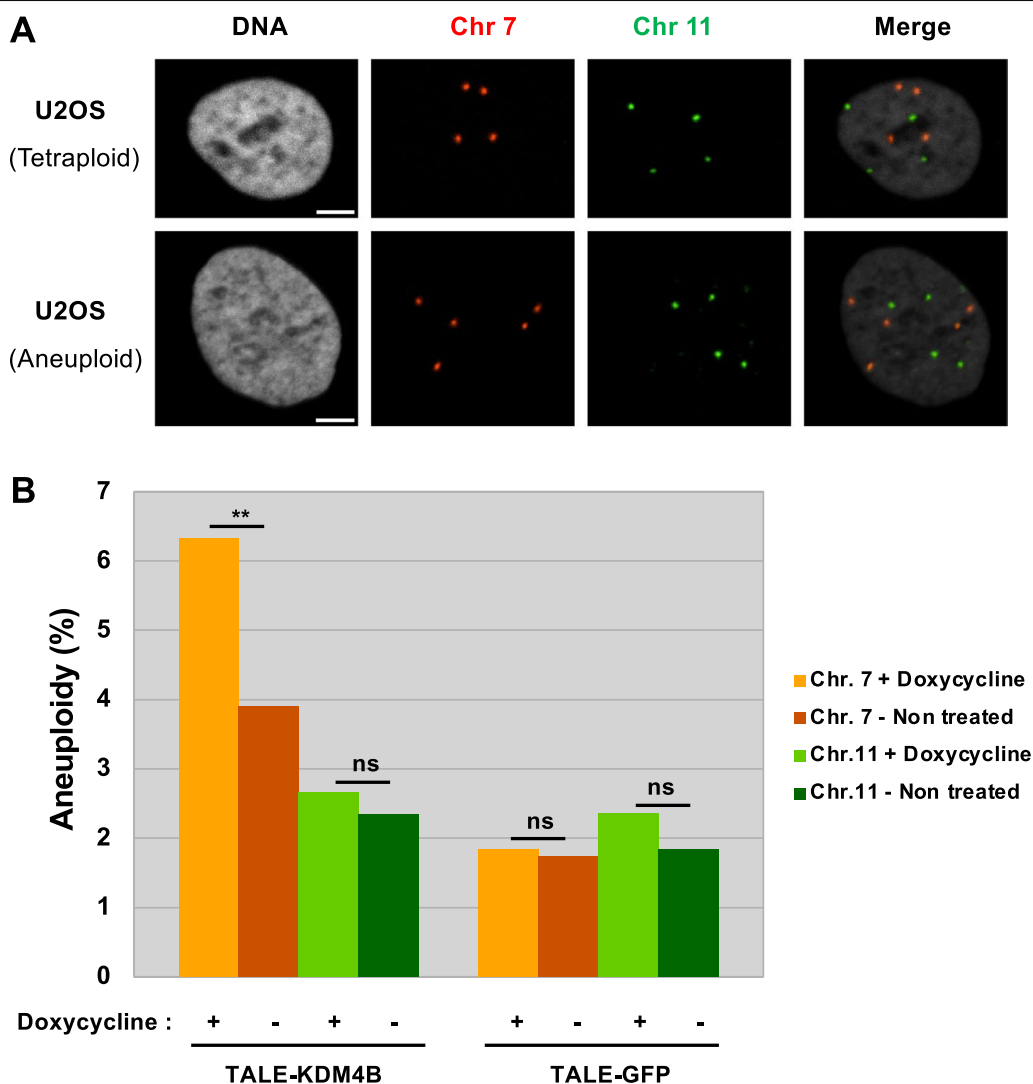
To test whether the H3K9me3 had a role in ensuring the proper segregation of sister chromatids, we measured the impact of H3K9me3 loss, brought by the TALE-demethylase, on the stability of chromosome 7 and chromosome 11 used as a control. We grew the two doxycycline inducible cell lines expressing either the TALE-demethylase or the TALE-GFP for 48 h with or without doxycycline

and determined the number of chromosome 7 and 11 in each nucleus. FISH images in which the centromeres of chromosomes 7 and 11 were labeled with centromere specific probes were acquired, covering over a thousand nuclei for each condition. The number of foci was used as a measure of genome stability: the higher the number of nuclei containing over or under 4 chromosomes (U2OS cells being tetraploid for chromosomes 7 and 11), the higher the instability for this chromosome. In order to avoid counting cells in S/G2 which would have doubled their number of chromosomes 7 and 11, we removed cells with 8 chromosomes 7 and 11. We also measured the nuclei volumes and excluded nuclei showing a significant increase in their volume (Additional file 1: Fig. S3A). In our TALE-demethylase cell line, we measured a significant 62% increase of chromosome 7 instability ( $p < 0.01$ , Chi-squared test), going from 45 nuclei (3.9%) containing an altered number of chromosomes 7 in cells cultivated without doxycycline to 76 nuclei (6.3%) in cells grown with doxycycline, which triggers the expression of the TALE-demethylase (Fig. 4 and Additional file 1: Table S1). Most of the events correspond to the loss of one chromosome 7, 55 nuclei having three chromosomes 7 instead of four. Gains of one or two chromosomes 7 are less frequent, 14 and 3 nuclei, respectively (Additional file 1: Fig. S3B). The number of nuclei containing an altered number of chromosomes 11 after 48 h of growth went from 27 without doxycycline to 32 with the drug. However, this slight variation proved to be non-significant ( $p = 0.24$ ). In our TALE-GFP cell line, we did not observe any significant variation between doxycycline-treated and non-treated cells, neither for chromosome 7 nor for chromosome 11 (Fig. 4 and Additional file 1: Table S1). This result suggests that the binding of the TALE-GFP does not affect the chromosomes segregation during mitosis. We notice a difference in the frequency of instability for chromosome 7 in the TALE-demethylase (3.9%) versus the control TALE-GFP cell line (1.7%) in absence of doxycycline. This could be due to a transcriptional leakage of the TALE-demethylase even though we could not detect it by western blot.

We conclude that the loss of H3K9me3 in the pericentromeric region of a chromosome is responsible for mitotic defects that can change the ploidy of this chromosome.

### Partial removal of pericentromeric H3K9me3 reduces HP1 $\alpha$ and CPC recruitment but does not affect CENP-A loading

Having successfully showed that modifying the epigenetic profile of the centromeric region results in mitotic defects, we wanted to explore the recruitment of some proteins involved in regulation of key mitotic events. The presence of the Chromosomal Passenger Complex (CPC)



**Fig. 4** Chromosome instability upon removal of chromosome 7 pericentromeric H3K9me3. **A** U2OS cells expressing the inducible TALE-demethylase. DNA is visualized using Hoechst, the  $\alpha$ -satellite repeats of chromosome 7 and 11 (shown in orange and green, respectively) are labeled using specific LNA probes. **B** Bar plot showing the level of chromosome instability (percentage of nuclei with more or less than 4 chromosomes) in over 1000 nuclei for chromosome 7 (orange) or chromosome 11 (green) upon expression (light) or not (dark) of the TALE-demethylase (left) or of the TALE-GFP (right).  $p$  values were computed using a Chi-squared test (\*\* $p < 0.01$ ). Scale bar, 5  $\mu$ m

is essential during interphase and mitosis to correct the chromosome microtubule attachment errors, and activate the spindle assembly checkpoint to insure the proper segregation of chromosomes. This complex is composed of several proteins, Survivin, INCENP, Borealin and its catalytic subunit Aurora B Kinase [25]. The HP1 $\alpha$  protein interacts with INCENP and Borealin and this interaction specifies the CPC localization in the centromere [39, 40].

In order to link the increased chromosomal instability to a potential change in partners recruited at this specific location, we determined how the decrease of H3K9me3

triggers by the TALE-demethylase affected firstly the HP1 recruitment and secondly the binding of the CPC. We measured the levels of the immunostaining of HP1 $\alpha$  with a dedicated antibody at the TALE foci, in cells which expressed the active versus inactive TALE-demethylase. We observed a 22% decrease of HP1 $\alpha$  labeling at the binding site of the TALE-demethylase compared to the TALE-inactive (Fig. 5A). This result indicates that the loss of H3K9me3 induces a loss of HP1 $\alpha$  in the same proportion, underlining the direct interplay between these proteins [41, 42].

(See figure on next page.)

**Fig. 5** Effects of TALE-demethylase expression on the density of pericentromeric proteins. U2OS cells expressing the TALE-demethylase (top) or the catalytically inactive mutant (bottom). DNA is visualized using Hoechst, the TALE (shown in green) is revealed with an anti-HA antibody and HP1 $\alpha$  (A), INCENP (B) or Aurora B (C) (shown in red) is revealed with a specific antibody. White arrows indicate TALE foci in each cell. Boxplots showing the signal at the TALE-demethylase foci (blue) (HP1 $\alpha$ :  $n = 607$  nuclei in 5 experiments, INCENP:  $n = 282$  nuclei in 2 experiments, Aurora B:  $n = 153$  nuclei in 2 experiments) or at the point mutant (orange) (HP1 $\alpha$ :  $n = 308$  in 5 experiments, INCENP:  $n = 130$  in 2 experiments, Aurora B:  $n = 118$  in 2 experiments). Signal in the foci is normalized by the global signal in the nucleus for HP1 $\alpha$ , INCENP and Aurora B. The box represents 50% of data points and the whiskers extend up to 1.5 times the interquartile range, the horizontal bar represents the median. The dashed line represents a signal normalized equal to one.  $p$  values were computed using a Wilcoxon–Mann–Whitney test (\* $p < 0.05$ /\*\* $p < 0.01$ /\*\*\*/ $p < 0.001$ \*\*\*\* $p < 0.0001$ ). A single focal plane is shown for each cell. Scale bar, 5  $\mu\text{m}$

We then examined the recruitment of INCENP and Aurora B, two proteins of the chromosomal passenger complex. Both for INCENP and Aurora B, we measured a decrease of the signal at the TALE-demethylase foci of 19.1% and 14.9%, respectively, when compared to the point mutant (TALE-KDM4B-H188A) (Fig. 5B, C). Taken together, these results show that the partial removal of H3K9me3 is sufficient to remove an equivalent amount of HP1 $\alpha$ , that in turn affects the recruitment of the CPC at pericentromeres.

We wondered if the loss of H3K9me3 could also affect the loading of CENP-A and destabilize the CCAN protein complex essential for the assembly of the kinetochore. We measured the intensity and volumes of the CENP-A foci associated with either the TALE-KDM4B or the inactive TALE-demethylase, 24 h after transfection of U2OS cells with dedicated plasmids. We did not observe any significant difference in the signal intensities and volumes of CENP-A foci associated to the D7Z1 centromeric region when the active or inactive TALE-demethylases are bound to their target sites (Additional file 1: Fig. S4A). To determine if CENP-A loading is affected by H3K9me3 removal in the TALE/CENP-A overlapping region, we measured the fraction of the volume of the TALE occupied by CENP-A (either with demethylase activity or not). We found that the percentage of the volume of the TALE occupied by CENP-A is 24% for TALE-KDM4B and 22% for TALE-KDM4B-H188A ( $p = 0.25$ , Wilcoxon–Mann–Whitney test) (Additional file 1: Fig. S4B). We conclude that there is no significant effect of the H3K9me3 removal on CENP-A loading on the D7Z1 region.

## Discussion

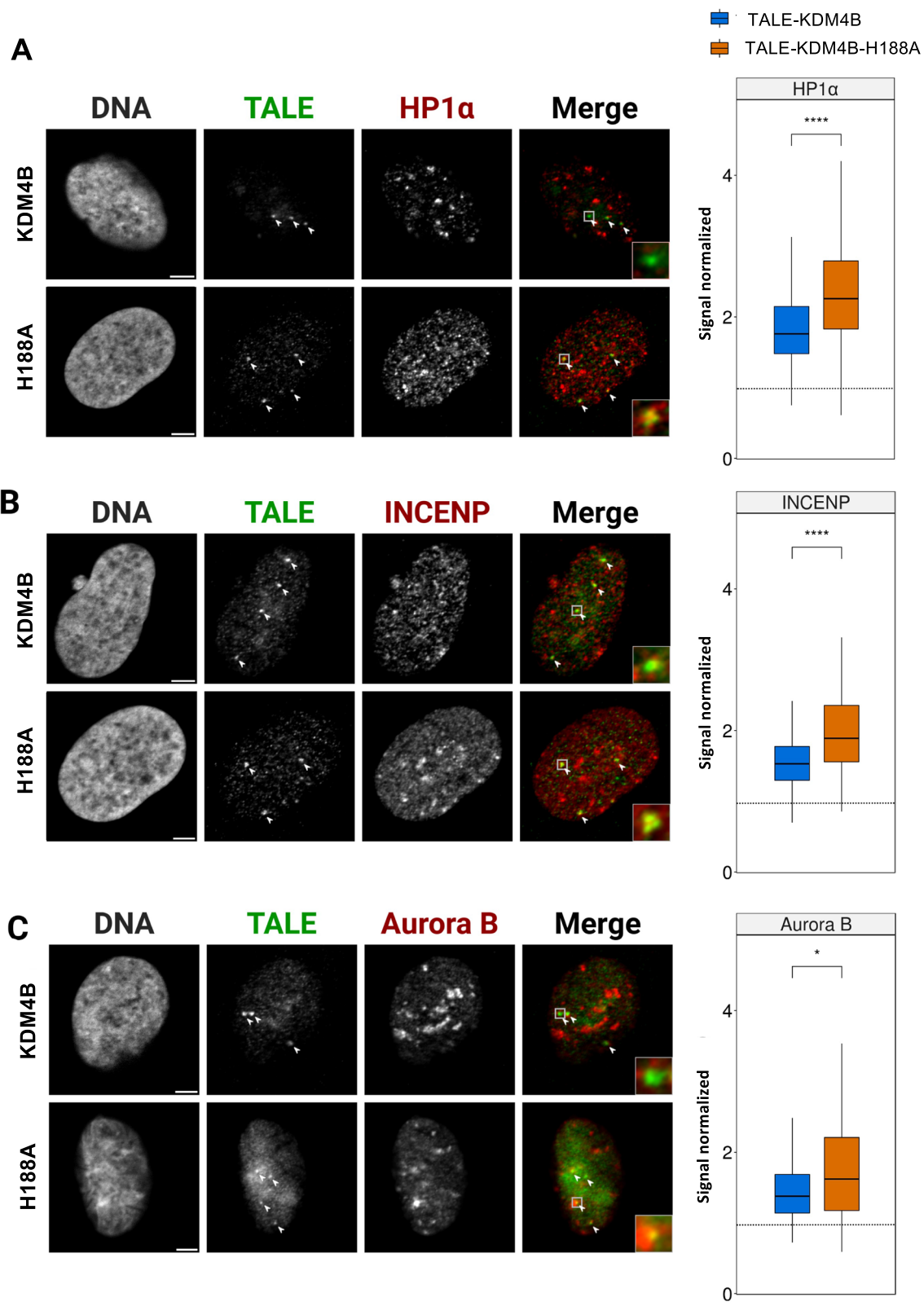
Using TALE fused to histone lysine demethylase targeting  $\alpha$ -satellites repeats of chromosomes 7, we were able to reduce the level of H3K9me3 in the heterochromatin region of these chromosomes. Our approach has the dual advantage to target endogenous centromeric regions with native chromatin and to target only one specific chromosome so that the effect of the modification induced can be specifically assessed by comparison with

other chromosomes. With this new epigenetic tool, we deciphered the consequences of removing the H3K9me3 heterochromatin mark on the centromere of chromosome 7 and assessed the effect of this epigenetic re-writing on chromatin accessibility, chromatin compaction, on centromeric proteins recruitment and on the stability of the chromosomes upon mitosis.

We showed that the targeting of the TALE-demethylase on D7Z1 region induced a significant loss of trimethylation of H3K9, associated with an increase of di- and mono-methylation of H3K9. This reduced level of H3K9me3 was accompanied by an expected decrease of HP1 $\alpha$  and of two major actors of the CPC. These changes in protein composition of the centromeric chromatin were associated with an increase of chromatin accessibility.

Chromatin accessibility is usually measured using enzymes that digest, cut or modify accessible DNA and high-throughput sequencing [43]. These techniques are difficult to calibrate in the context of repetitive DNA and they are restricted to a definition on accessibility that rules out potential binding on nucleosomal DNA. It is, however, now well accepted that some transcription factors can bind DNA wrapped onto nucleosomes [44]. We turned here to another quantification of chromatin accessibility based on microscopy. We used the intensity of labeled TALE targeting sequences found in the foci of interest to assess the local accessibility of the DNA sequences within these foci. Our experiments, carried in two different H3K9me3 chromatin contexts showed that chromatin lacking H3K9me3 is more prone to be bound by sequence-specific proteins such as TALEs. Interestingly, we also showed by super-resolution microscopy that this higher DNA accessibility is not associated with a larger size of TALE foci. This result reveals that an increase of DNA accessibility is not always accompanied by a visible decompaction of the chromatin.

We observed that the removal of H3K9me3 was associated with a decrease of INCENP and Aurora B, two members of the CPC. This result is in line with the loss of Survivin (another protein of the CPC) upon removal of H3K9me3 in interphase reported by Molina et al.



**Fig. 5** (See legend on previous page.)

[24] and suggests that the entire CPC formation could be impaired. The CPC is known to localize to pericentromeres during late S-phase by binding to HP1 $\alpha$ , allowing Aurora B to phosphorylate histone H3 at serine 10 (H3S10ph) [25, 45]. This phosphorylation event induces the release of HP1 $\alpha$  from chromatin and is thought to be involved in chromosomal condensation at the onset of mitosis [46–48]. The transient inhibition of Aurora B activity during interphase has been shown to lead to aberrant chromosome condensation and segregation [49–51]. In a recent study, the authors altered the HP1 $\alpha$  dynamics by strongly tethering HP1 $\alpha$  to centromeres inducing the CPC recruitment constitutively throughout the cell cycle [52]. This tethering caused mitotic delays and high frequency of chromosome segregation errors. In the present work, we complement these studies by showing that the recruitment of the CPC by HP1 is already active in interphase and is impaired by a loss of H3K9me3. Taken together, these results show that the fine-tuning of HP1 dynamics is necessary for the correct recruitment and activation of the CPC, an essential factor that controls chromosome segregation during mitosis. Another role of HP1 in mitosis progression is related to the chromoshadow domain of HP1 $\alpha$  that supports proper centromeric cohesion by interacting with the Haspin kinase [53]. The double null HP1 $\alpha$  and HP1 $\gamma$  cells present indeed prolonged mitosis, increased chromosome mis-segregation and premature chromatid separation.

Looking at the number of chromosomes 7 and 11 after cells underwent mitosis, we were able to observe an increase in mis-segregation for chromosome 7 but not for chromosome 11 on which no epigenetic modification has been targeted. Taken together, these results show that pericentromeric H3K9me3 plays a role in the correct repartition of chromosomes during mitosis by acting as a platform to locate HP1 $\alpha$  which, in turn, recruits the CPC. For the first time, we demonstrate the role in genome stability of pericentromeric H3K9me3 in a chromosome-specific manner. Other studies have shown a correlation between H3K9me3 loss and an increase of mis-segregation of chromosomes, but they involved a whole H3K9me3 removal on all heterochromatin regions, triggered either by the double inactivation of SUV39H1/2 genes or the over-expression of histone lysine demethylase [20, 21, 23, 24]. Our study shows that the chromosomal instability reported in these studies is not the result of a secondary event, such as an oncogene activation, but rather results from the impaired assembly of the CPC at centromeres and possibly also from an alteration of the kinetochore architecture. Indeed, a recent study reports that the long-term tethering (>4 days) of histone lysine demethylase (KDM4D) to HAC, reduced

CENP-A and CENP-C levels and triggered HAC mis-segregation [28]. In our cellular model, all the experiments were performed after 1 or 2 days of tethering of TALE-demethylase on D7Z1 centromeric region and no effect was seen, neither on CENP-A loading nor on CENP-C recruitment (data not shown). This result is in agreement with those published previously showing that tethering KDM4D to the HAC for 2 days has no significant effect on CENP-A and CENP-C [28]. It suggests that the mis-segregation of chromosome 7 observed after 2 days of TALE-demethylase induction, is likely due to the impaired assembly of the CPC rather than to an alteration of the CENP-A and CCAN protein levels.

Transcription of centromeric chromatin is important for establishment of heterochromatin and for centromere functions [54, 55]. Several studies demonstrated the presence of RNA at the mitotic kinetochore [56, 57] and RNA binding regulates the association of SUV39H1 protein with pericentromeric  $\alpha$ -satellite repeats in human cells [58]. In this last study, the authors were able to show that the inhibition of the recruitment of SUV39H1 in the pericentromeric regions leads to a localized decrease in H3K9me3 and HP1 level, associated with an increase in  $\alpha$ -satellite transcripts. A perspective of our work would be to determine the effect of the loss of H3K9me3 and HP1 $\alpha$  on the transcription of the  $\alpha$ -satellite sequences of the D7Z1 region.

## Conclusion

In this study, we were able to remove the H3K9me3 mark in the centromeric region of one specific chromosome in a dedicated human cellular model, using TALE protein fused to a histone lysine demethylase. This H3K9me3 removal is associated with the loss of HP1 $\alpha$  which affects chromatin structure by increasing the accessibility of DNA repeats to the TALE protein. We uncover the essential role of the H3K9me3 epigenetic mark on centromere function as the segregation upon mitosis of the chromosome targeted by the TALE-KDM4B is specifically altered in comparison with other chromosomes with normal centromeric chromatin. This chromosomal instability results from an impairment of the recruitment of key proteins of the CPC, required to correct erroneous microtubule attachments.

Our inducible cellular models offer perspectives to decipher the role of H3K9me3 mark in structural aspects and fine regulation of centromeric chromatin [59], as well as, in genome 3D organization and gene regulation where

the importance of centromeres is now recognized [15, 60].

## Methods

### Cell culture

U2OS cells were maintained in McCoy's 5A (1×) + GlutaMAX™ medium supplemented with 10% FBS in a cell culture incubator (37 °C in 5% CO<sub>2</sub>). Transfections were performed using the AMAXA™ Cell Line Nucleofector™ Kit V (Lonza): cells were resuspended using 0.05% Trypsin–EDTA(1X) and counted on a Malassez counting chamber, then 10<sup>6</sup> cells were transfected with 2 µg of plasmid. They were put back in culture on a 22 × 22 × 0.17 mm coverslip in a 6 wells plate for 24 h. Stable cell lines were induced with 2 µg/mL doxycycline for 48 h prior to analysis.

### Plasmids

The TALE proteins, produced in-house by the TAC-GENE platform, are composed of the N-Terminal Region (NTR) and the Central Repeat Domain (CRD) with 17.5 repeated motifs binding the following α-satellite sequence from D7Z1 centromeric region: 5' TGCAAT TGTCCTCAAATC 3'. In the N-terminal part of the TALE, the NLS from SV40 and three HA tags were added. At the C-terminal part of the TALE was fused either the cDNA of the wild-type histone lysine demethylase KDM4B (kindly given by Sophie Beyer), or the KDM4B cDNA with the H188A point mutation or a GFP. The H188A mutation was introduced by QuikChange II Site-Directed Mutagenesis kit (Agilent Technologies) with the following primers: 5' GAAGACCACCTTCGC CTGGGCCACCGAGGACATGGACCTGTA 3' and 5' TACAGGTCATGTCCTCGGTGGCCAGGCGAAG GTGGTCTTC 3'. In transient transfections, constructs were expressed under a CMV promoter.

Cell lines were generated from U2OS cells using the Tet-On® system from Clontech® and following the manufacturer's instructions. In these stable cell lines, two plasmids were integrated successively. The first expresses the transactivator protein under a CMV promoter and has a G418 resistance gene for selection. The second contains our TALE-fusion protein (TALE-KDM4B or TALE-GFP) expressed under the PTRE3G promoter containing seven Tet-O repeats and was co-introduced in cells with a linear puromycin marker for selection. Individual colonies were isolated using 150-µL glass cloning cylinders from Sigma-Aldrich®. The list of plasmids we used is presented in Additional file 1: Table S2.

### Western blot

Cells are lysed with lysis buffer (50 mM Tris–HCl pH 7, 1% Triton X-100, 0.1% SDS, 150 mM NaCl, 1 mM EDTA, 1 mM DTT) supplemented with protease inhibitors cocktail. In order to prevent the dimers formation of KDM4B protein, before denaturation at 95 °C, protein samples were incubated with basic buffer (glycine 0.2 M pH 11) for 20 min at 37 °C. Protein samples were separated by SDS-PAGE after 1.5 h of migration at 150 V in Tris–glycine–SDS buffer 1×. Proteins are transferred onto nitrocellulose membranes (Bio-Rad) by liquid transfer over night at 30 V with Tris–glycine–SDS buffer 1×/EtOH 10%. Membranes are probed with the following antibodies: HA (11867423001, Roche) and α-tubulin (T5168, Sigma-Aldrich). Revelation of the membranes are performed with the ECL Prime Western blotting detection reagent (Amersham).

### Immunofluorescence and FISH

IF and FISH protocols used were the same as described in [61]. Briefly, cells were fixed in 4% paraformaldehyde (PFA) in 1 × PBS for 10 min and washed three times with PBS. Cells were permeabilized with 0.1% Triton X-100/PBS for 5 min, washed two times with PBS and blocked with 1.5% blocking reagent (Roche Applied Science) at 37 °C for 30 min. Primary antibodies were incubated for 1.5 h at room temperature (RT). After three washing with 0.1% Triton X-100/PBS at RT, secondary antibodies were incubated for 1 h at RT in the dark, followed by three washing. For immunofluorescence experiment, DNA staining was performed with 1/5000 dilution of Hoechst 33,342 solution (Thermo Scientific) for 10 min. For IF-FISH experiment, a post-fixation step is performed with PFA 2% in 1 × PBS for 10 min and washed three times with 0.05% Triton X-100/PBS. Nuclei were permeabilized with 0.5% Triton X-100/PBS for 10 min, rinsed three times with 0.05% Triton X-100/PBS, treated with 0.1 N HCl for 1 min, rinsed twice, equilibrated in 2 × SSC, and then treated with 2 × SSC/50% deionized formamide at room temperature for at least 30 min before hybridization. Oligonucleotide probes were diluted at 0.2 µM in a hybridization solution (2 × SSC, 50% deionized formamide, 1 × Denhardt's solution, 10% dextran sulfate, 0.1% SDS). Hybridization is performed in an in situ PCR apparatus (MJ Research) with the following steps: 3 min at 85 °C then slowly cooled to 37 °C at a rate of 1 °C/s and an incubation at 37 °C for 2 min. Cells were washed twice in 2 × SSC at 63 °C. If a secondary antibody is necessary to reveal the probe, cells were incubated in blocking solution (4% BSA, 1X PBS, 0.05% Tween 20) for 30 min at 37 °C. Secondary antibodies were diluted in blocking solution and incubated for 1 h at RT in the dark, followed by three washing in 0.05% Tween 20/2× SSC. DNA was

stained with Hoechst solution, then coverslips were mounted with PPD8 mounting medium (Sigma-Aldrich).

For PALM experiments, IF was performed but the sample were not stained with Hoechst, instead they were stored in 1×PBS at 4 °C and protected from light until image acquisitions. At that time, a 1:100 dilution of 0.1 μm TetraSpeck™ microspheres was applied to the samples which were then covered in 50 mM MEA/GLOX buffer and mounted onto a 70 × 24 × 0.17 mm coverslip.

## Antibodies and probes

### Primary antibodies

Aurora B (ab2254, Abcam), CENP-A (ab13939, Abcam), CENP-C (PD030, Medical and Biological Laboratories), H3K9me1 (39681, Active Motif), H3K9me2 (05–1249, Millipore), H3K9me3 (07–523, Upstate), H3K4me2 (07–030, Upstate), H3K27me3 (61017, Active Motif & ab6002, Abcam), HA (ab9111, Abcam), HP1α (MAB3584, Millipore), INCENP (ab36453, Abcam).

### Secondary antibodies

Anti-chicken Alexa Fluor® 488 (703-546-155, Jackson ImmunoResearch), anti-mouse Cyanine 3 (115-167-003, Jackson ImmunoResearch), anti-rabbit Cyanine 3 (111-166-045, Jackson ImmunoResearch), anti-mouse DyLight® 649 (715–495-150, Jackson ImmunoResearch), anti-rabbit Cyanine 5 (111-175-144, Jackson ImmunoResearch), anti-digoxigenin TAMRA (11207750910, Roche) (used for FISH).

Primary and secondary antibodies were usually diluted at 1:200.

Centromere-specific oligonucleotide probes were used for the FISH experiments: the a7d probe (5' ATGTGCCTCAAATCGCTT 3') targets the D7Z1 α-satellite repeats while the a11G probe (5' AGGGTTTCAGAGCTGCTC 3') targets the D11Z1 repeats (nucleotides underlined indicate LNA bases). The a7d oligonucleotide is coupled with digoxigenin and a11G with AF488 fluorophore. The D7Z1 probe used for IF-FISH was generated by random priming, the PCR product used for the reaction was obtained by amplifying U2OS DNA with the following primers: Fwd 5' ACGGGGTTTCTTCTTCAT/Rev 5' GCTCTCTCAAAGCAAGGTCA.

### Microscopy and 3D image analysis

Classical microscopy imaging was performed with a Zeiss epifluorescence inverted microscope (Axio Observer Z1) equipped with a plan-Apochromat 63 ×/1.4 numerical aperture oil-immersion objective, as described in [61]. Z-stacks consisted of 50–60 sequential slices of 1344 × 1024 pixels (pixel size, 0.1 μm) captured

at 0.23 μm intervals by a CCD ORCA-R2 camera (Hamamatsu). For each optical section, images were collected sequentially for each fluorescence channel.

Images were processed using TANGO (v0.93), the nuclei (labeled with Hoechst) were automatically segmented using a home-made 3D watershed-derived algorithm (called Nucleus Edge Detector), which detects nuclear borders using an intensity gradient maxima criterion [62]. The TALE foci were segmented using dedicated algorithm (called Spot Segmenter). Quality of segmentation was manually verified in each cell. The different signals corresponding to H3K9me3/me2/me1, H3K4me2, HA, FLAG, HP1, Aurora B and INCENP, were measured inside of the segmented structures (the nuclei and the TALE foci). The measurement results were imported and analyzed with R [63]. All values reported in the paper represent the ratio of the mean fluorescence intensity in the foci of interest over the mean fluorescence intensity within the nucleus. They were computed as follows:  $(\text{Signal}_{\text{foci}}/\text{Volume}_{\text{foci}})/(\text{Signal}_{\text{nucleus}}/\text{Volume}_{\text{nucleus}})$ , where  $\text{Signal}_{\text{foci}}$  corresponds to the integrated fluorescence signal intensity inside of the TALE foci and  $\text{Signal}_{\text{nucleus}}$  corresponds to the total nuclear fluorescence signal intensity. A density greater than one indicates that the signal is higher within the foci. For CENP-A signal, the integrated signal was normalized by the spot volume to remove any effect of size differences between foci. For overlap values, only CENP-A foci in contact with a segmented TALE signal were considered. In the event of multiple CENP-A foci overlapping with a single TALE signal, only the one with the largest overlap value (measured relative to the segmented TALE volume) was kept.

### Super-resolution microscopy and SMLM data analysis

Super-resolution imaging was performed on a home-made set-up comprising a set of cw lasers (Oxxius LBX-4C-405/488/561/638), an Olympus 100 ×/1.4 NA oil-immersion objective (UPlanSApo 100×/1.4), and an EM-CCD camera with pixel size of 16 μm × 16 μm (Andor iXon 3 897 Ultra). The objective lens combined with a tube lens of 200 mm of focal length provided a total magnification of the system of 111×, and therefore the pixel size on the object plane was 144 nm × 144 nm. Both photoactivation (405 nm) and excitation (561 nm) lasers were focused on the back focal plane (BFP) of the objective via an appropriate dichroic (Semrock Di03-R561). The position of the focal spot in the BFP with respect to the objective axis was chosen to provide a highly inclined illumination (HILO) [64] in order to improve the signal-to-noise ratio. Fluorescence emission light collected by the objective was filtered at a

wavelength centered at 609 nm (Semrock FF01-609/54) before forming the image on the camera. A typical acquisition consisted of 20,000 frames at an integration time of 30 ms.

Raw movies were first analyzed to retrieve the super-localized positions of the single emitters with the ImageJ plugin ThunderSTORM [65], performing a Gaussian fit of the point spread function (PSF) of the recorded single-molecule events. The data was then corrected for sample drift and merging consecutive detections of the same molecule. With the localized emitter positions data, we then generated super-resolved images on a canvas with a pixel size tenfold increase with respect to the original image. The image was formed by the addition of 2D Gaussian functions of unitary amplitude and size related to their localization accuracy in the retrieved positions.

In order to estimate and compare the size of the TALE clusters, we cropped regions of interest (ROIs) around the clusters in the reconstructed images and normalized them to their maximum intensity pixel value. This was done in order to correct for variability in cell transfection and fluorophore photoactivation, and ensure that only the size of the cluster is accounted for and not the density of detected events in a particular cluster. These ROIs were then segmented and the area of the ROI above an arbitrary intensity threshold was accounted for.

### Aneuploidy experiments

Inducible U2OS cell lines expressing either the TALE-demethylase or TALE-GFP in response to doxycycline are used to monitor the impact of H3K9me3 removal on the stability of chromosome 7 upon mitosis. Asynchronous cultures of the two cell lines were grown for 48 h in the presence (induction) or absence (repression) of doxycycline (2 µg/mL) before cell fixation. The number of chromosomes 7 and 11 (used as control) in each nucleus is determined after FISH experiments with centromere specific probes. In order to avoid counting cells in S/G2 which would have doubled their number of chromosomes 7 and 11, the nuclei with 8 chromosomes 7 and/or 11 are excluded from the analysis. Likewise, the volume of the nuclei was taken into account and the nuclei showing a significant increase in their volume were removed.

### Supplementary Information

The online version contains supplementary material available at <https://doi.org/10.1186/s13072-021-00410-x>.

**Additional file 1: Figure S1.** Visualization of the TALE fusions proteins and CENP-A. U2OS cells expressing either the TALE-demethylase (top), its point mutant (middle) or the TALE-GFP (bottom). TALE proteins are visualized using an anti-HA antibody (shown in green), CENP-A is revealed with an anti-CENP-A antibody (shown in red) and DNA was stained using Hoechst. Maximum projections are shown for each cell. Scale bar, 10 µm.

**Figure S2.** Characterization of the overlap of TALE-fusion proteins with CENP-A and D7Z1. Percentage of overlap between TALE and CENP-A foci (left, n=277 foci) and TALE and D7Z1 foci (right, n=316 foci). The value presented is the volume of the TALE covered by the other structure (in %). **Figure S3.** Chromosome instability in TALE-demethylase cell line. (A) The volumes of nuclei are represented according to the number of chromosomes 11 (top two panels, green) or 7 (bottom two panels, orange) in the inducible cell line expressing the TALE-KMD4B, with or without doxycycline treatment. The muted area around the solid line represents the standard error while the black dots are the individual data points (nuclei volume) for each number of chromosomes. (B) The number of chromosomes 7 and 11 are determined in a thousand nuclei of the TALE-KMD4B cell line, after 48 h of growth with or without doxycycline treatment. The histogram represents the number of nuclei counted according to the number of chromosomes 7 (green) or 11 (orange) in each nucleus. **Figure S4.** Effects of TALE-demethylase expression on CENP-A loading. (A) Boxplots showing the signal intensity (left panel) and the volume (right panel) of CENP-A foci associated with the TALE-demethylase foci (blue) (n=186 foci) or with the TALE-KDM4B-H188A foci (orange) (n=82). (B) Boxplot showing the percentage of overlap of TALE-demethylase foci by CENP-A foci (blue) (n=186 foci) and the overlap of TALE-KDM4B-H188A foci by CENP-A foci (orange) (n=82). The value presented is the percentage of the volume of the TALE covered by CENP-A. **Table S1.** Chromosome instability upon removal of chromosome 7 pericentromeric H3K9me3. Number of nuclei containing either 4 chromosomes 7 and 11 or a different number. Nuclei containing more or less than 4 chromosomes are considered products of aberrant mitosis and proof of genomic instability. Cells grown with doxycycline for 48h (+) are expressing either the TALE-demethylase or the TALE-GFP (control), while cells grown without (-) do not express any construct. **Table S2.** Plasmids used in this study.

### Acknowledgements

The authors thank Jean-Paul Concordet, Carine Giovannangeli, Marine Charpentier and Anne De Cian from the TACGENE platform for the synthesis of TALE plasmids. We thank Claire Francastel, Emmanuelle Delagoutte and Jean-Baptiste Boulé for helpful discussion and Loïc Ponger for advises on statistical analysis.

### Authors' contributions

SD, CE and JL designed the experiments. SD performed the experiments with classical microscopy and analyzed images with the assistance of FL who also provided technical support for TANGO software. LC, KA and II performed PALM microscopy and analyzed images. SD, II, JM, CE and JL analyzed the data and wrote the manuscript. All authors have read and approved the final manuscript.

### Funding

This work was supported by funds from the Institut National de la Santé et de la Recherche Médicale, the Centre National de la Recherche Scientifique and the Muséum National d'Histoire Naturelle. SD was supported by a graduate student fellowship from the « Ministère de l'Éducation Nationale, de l'Enseignement Supérieur et de la Recherche ». LC was supported by the International PhD Program from Institut Curie.

### Availability of data and materials

The datasets used and/or analyzed during the current study are available from the corresponding author on reasonable request.

### Declarations

#### Ethics approval and consent to participate

Not applicable.

#### Consent for publication

Not applicable.

#### Competing interests

The authors declare that they have no competing interests.



**Author details**

<sup>1</sup>Laboratoire Structure et Instabilité des Génomes, INSERM U1154, CNRS UMR7196, Muséum National d'Histoire Naturelle, 43 rue Cuvier, 75005 Paris, France. <sup>2</sup>Laboratoire Physico-Chimie, Institut Curie, CNRS UMR168, Paris-Science Lettres, Sorbonne Université, 75005 Paris, France. <sup>3</sup>Institut Langevin, ESPCI Paris, PSL Université, CNRS, 75005 Paris, France. <sup>4</sup>Present Address: DCCBR, University of Toronto, Toronto, ON M5S 3E1, Canada. <sup>5</sup>Present Address: INSERM, UMR 1229, Regenerative Medicine and Skeleton, Université de Nantes, ONIRIS, 44042 Nantes, France. <sup>6</sup>Present Address: Institut Fresnel, Aix Marseille Université CNRS Centrale Marseille, Marseille, France.

Received: 2 March 2021 Accepted: 18 July 2021

Published online: 28 July 2021

**References**

- Pluta AF, Cooke CA, Earnshaw WC. Structure of the human centromere at metaphase. *Trends Biochem Sci.* 1990;15(5):181–5.
- Gordon GS, Wright A. DNA segregation in bacteria. *Annu Rev Microbiol.* 2000;54:681–708.
- Schumacher MA, Tonthat NK, Lee J, Rodriguez-Castañeda FA, Chinnam NB, Kalliomaa-Sanford AK, et al. Structures of archaeal DNA segregation machinery reveal bacterial and eukaryotic linkages. *Science.* 2015;349(6252):1120–4.
- Hayden KE. Human centromere genomics: now it's personal. *Chromosome Res.* 2012;20(5):621–33.
- Fukagawa T, Earnshaw WC. The centromere: chromatin foundation for the kinetochore machinery. *Dev Cell.* 2014;30:496–508.
- McNulty SM, Sullivan BA. Alpha satellite DNA biology: finding function in the recesses of the genome. *Chromosome Res.* 2018;26:115–38.
- Stellfox ME, Bailey AO, Foltz DR. Putting CENP-A in its place. *Cell Mol Life Sci.* 2013;70(3):387–406.
- Sharma AB, Dimitrov S, Hamiche A, Van Dyck E. Centromeric and ectopic assembly of CENP-A chromatin in health and cancer: old marks and new tracks. *Nucleic Acids Res.* 2019;47(3):1051–69.
- Nishibuchi G, Déjardin J. The molecular basis of the organization of repetitive DNA-containing constitutive heterochromatin in mammals. *Chromosome Res.* 2017;25(1):77–87.
- Sales-Gil R, Vagnarelli P. How HP1 post-translational modifications regulate heterochromatin formation and maintenance. *Cells.* 2020;9:1460.
- Mozzetta C, Boyarchuk E, Pontis J, Ait-Si-Ali S. Sound of silence: the properties and functions of repressive Lys methyltransferases. *Nat Rev Mol Cell Biol.* 2015;16(8):499–513.
- Larson AG, Elnatan D, Keenen MM, Trnka MJ, Johnston JB, Burlingame AL, et al. Liquid droplet formation by HP1 $\alpha$  suggests a role for phase separation in heterochromatin. *Nature.* 2017;547:236–40.
- Strom AR, Emelyanov AV, Mir M, Fyodorov DV, Darzacq X, Karpen GH. Phase separation drives heterochromatin domain formation. *Nature.* 2017;547(7662):241–5.
- Erdel F, Rademacher A, Vlijm R, Tünnermann J, Frank L, Weinmann R, et al. Mouse heterochromatin adopts digital compaction states without showing hallmarks of HP1-driven liquid-liquid phase separation. *Mol Cell.* 2020;78(2):236–249.e7.
- Ninova M, Tóth KF, Aravin AA. The control of gene expression and cell identity by H3K9 trimethylation. *Development.* 2019;146:dev181180.
- Janssen A, Colmenares SU, Karpen GH. Heterochromatin: guardian of the genome. *Annu Rev Cell Dev Biol.* 2018;34:265–88.
- Becker JS, Nicetto D, Zaret KS. H3K9me3-dependent heterochromatin: barrier to cell fate changes. *Trends Genet.* 2016;32(1):29–41.
- Müller S, Almouzni G. Chromatin dynamics during the cell cycle at centromeres. *Nat Rev Genet.* 2017;18(3):192–208.
- Mahlke MA, Nechemia-Arbely Y. Guarding the genome: CENP-a-chromatin in health and cancer. *Genes.* 2020;11(7):810.
- Peters AHFM, Carroll O, Scherthan H, Mechtler K, Sauer S, Scho C, et al. Loss of the Suv39h histone methyltransferases impairs mammalian heterochromatin and genome stability. *Cell.* 2001;107:323–37.
- McManus KJ, Biron VL, Heit R, Underhill DA, Hendzel MJ. Dynamic changes in histone H3 lysine 9 methylations: identification of a mitosis-specific function for dynamic methylation in chromosome congression and segregation. *J Biol Chem.* 2006;281(13):8888–97.
- Dimitrova E, Turberfield AH, Klose RJ. Histone demethylases in chromatin biology and beyond. *EMBO Rep.* 2015;16(12):1620–39.
- Slee RB, Steiner CM, Herbert B-S, Vance GH, Hickey RJ, Schwarz T, et al. Cancer-associated alteration of pericentromeric heterochromatin may contribute to chromosome instability. *Oncogene.* 2012;31(27):3244–53.
- Molina O, Carmena M, Maudlin IE, Earnshaw WC. PREditOR: a synthetic biology approach to removing heterochromatin from cells. *Chromosome Res.* 2016;24:495–509.
- Carmena M, Wheelock M, Funabiki H, Earnshaw WC. The chromosomal passenger complex (CPC): from easy rider to the godfather of mitosis. *Nat Rev Mol Cell Biol.* 2012;13(12):789–803.
- Funabiki H. Correcting aberrant kinetochore microtubule attachments: a hidden regulation of Aurora B on microtubules. *Curr Opin Cell Biol.* 2019;58:34–41.
- Ohzeki J, Larionov V, Earnshaw WC, Masumoto H. De novo formation and epigenetic maintenance of centromere chromatin. *Curr Opin Cell Biol.* 2019;58:15–25.
- Martins NMC, Cisneros-Soberanis F, Pesenti E, Kochanova NY, Shang WH, Hori T, et al. H3K9me3 maintenance on a human artificial chromosome is required for segregation but not centromere epigenetic memory. *J Cell Sci.* 2020;133(14):jcs242610.
- Willard HF. Chromosome-specific organization of human alpha satellite DNA. *Am J Hum Genet.* 1985;37:524–32.
- Moscou MJ, Bogdanove AJ. Recognition by TAL effectors. *Science.* 2009;326:1501.
- Voytas DF, Joung JK. DNA binding made easy. *Science.* 2009;326:1491–2.
- Jankele R, Svoboda P. TAL effectors: tools for DNA targeting. *Brief Funct Genomics.* 2014;13(5):409–19.
- Hayden KE, Strome ED, Merrett SL, Lee H-R, Rudd MK, Willard HF. Sequences associated with centromere competency in the human genome. *Mol Cell Biol.* 2013;33(4):763–72.
- Whetstone JR, Nottke A, Lan F, Huarte M, Smolikov S, Chen Z, et al. Reversal of histone lysine trimethylation by the JMJD2 family of histone demethylases. *Cell.* 2006;125(3):467–81.
- Olion J, Cochenne J, Loll F, Escudé C, Boudier T. TANGO: a generic tool for high-throughput 3D image analysis for studying nuclear organization. *Bioinformatics.* 2013;29(14):1840–1.
- Martins NMC, Bergmann JH, Shono N, Kimura H, Larionov V, Masumoto H, et al. Epigenetic engineering shows that a human centromere resists silencing mediated by H3K27me3/K9me3. *Mol Biol Cell.* 2016;27(1):177–96.
- Feng H, Tillman H, Wu G, Davidoff AM, Yang J. Frequent epigenetic alterations in polycomb repressive complex 2 in osteosarcoma cell lines. *Oncotarget.* 2018;9(43):27087–91.
- Allshire RC, Madhani HD. Ten principles of heterochromatin formation and function. *Nat Rev Mol Cell Biol.* 2018;19:229–44.
- Ainsztein AM, Kandels-Lewis SE, Mackay AM, Earnshaw WC. INCENP centromere and spindle targeting: identification of essential conserved motifs and involvement of heterochromatin protein HP1. *J Cell Biol.* 1998;143(7):1763–74.
- Liu X, Song Z, Huo Y, Zhang J, Zhu T, Wang J, et al. Chromatin protein HP1 $\alpha$  interacts with the mitotic regulator borealin protein and specifies the centromere localization of the chromosomal passenger complex. *J Biol Chem.* 2014;289(30):20638–49.
- Nishibuchi G, Nakayama JI. Biochemical and structural properties of heterochromatin protein 1: understanding its role in chromatin assembly. *J Biochem.* 2014;156(1):11–20.
- Kumar A, Kono H. Heterochromatin protein 1 (HP1): interactions with itself and chromatin components. *Biophys Rev.* 2020;12:387–400.
- Klemm SL, Shipony Z, Greenleaf WJ. Chromatin accessibility and the regulatory epigenome. *Nat Rev Genet.* 2019;20(4):207–20.
- Fernandez Garcia M, Moore CD, Schulz KN, Alberto O, Donague G, Harrison MM, et al. Structural features of transcription factors associating with nucleosome binding. *Mol Cell.* 2019;75:921–32.
- Hayashi-Takanaka Y, Yamagata K, Nozaki N, Kimura H. Visualizing histone modifications in living cells: spatiotemporal dynamics of H3 phosphorylation during interphase. *J Cell Biol.* 2009;187(6):781–90.
- Wei Y, Yu L, Bowen J, Gorovsky MA, David AC. Phosphorylation of histone H3 is required for proper chromosome condensation and segregation. *Cell.* 1999;97(1):99–109.

47. Giet R, Glover DM. Drosophila aurora B kinase is required for histone H3 phosphorylation and condensin recruitment during chromosome condensation and to organize the central spindle during cytokinesis. *J Cell Biol.* 2001;152(4):669–81.
48. Kruitwagen T, Denoth-Lippuner A, Wilkins BJ, Neumann H, Barral Y. Axial contraction and short-range compaction of chromatin synergistically promote mitotic chromosome condensation. *Elife.* 2015;4:e10396.
49. Lavoie BD, Hogan E, Koshland D. In vivo requirements for rDNA chromosome condensation reveal two cell-cycle-regulated pathways for mitotic chromosome folding. *Genes Dev.* 2004;18:76–87.
50. Petrova B, Dehler S, Kruitwagen T, Heriche J-K, Miura K, Haering CH. Quantitative analysis of chromosome condensation in fission yeast. *Mol Cell Biol.* 2013;33(5):984–98.
51. Ohishi T, Muramatsu Y, Yoshida H, Seimiya H. TRF1 ensures the centromeric function of Aurora-B and proper chromosome segregation. *Mol Cell Biol.* 2014;34(13):2464–78.
52. Ruppert JG, Samejima K, Platani M, Molina O, Kimura H, Jeyapakash AA, et al. HP 1 $\alpha$  targets the chromosomal passenger complex for activation at heterochromatin before mitotic entry. *EMBO J.* 2018;37:e97677.
53. Yi Q, Chen Q, Liang C, Yan H, Zhang Z, Xiang X, et al. HP 1 links centromeric heterochromatin to centromere cohesion in mammals. *EMBO Rep.* 2018;19(4):e45484.
54. Fukagawa T, Nogami M, Yoshikawa M, Ikeno M, Okazaki T, Takami Y, et al. Dicer is essential for formation of the heterochromatin structure in vertebrate cells. *Nat Cell Biol.* 2004;6(8):784–91.
55. Moazed D. Mechanisms for the inheritance of chromatin states. *Cell.* 2011;146(4):510–8.
56. Wong LH, Brettingham-Moore KH, Chan L, Quach JM, Anderson MA, Northrop EL, et al. Centromere RNA is a key component for the assembly of nucleoproteins at the nucleolus and centromere. *Genome Res.* 2007;17(8):1146–60.
57. Chan FL, Marshall OJ, Saffery R, Kim BW, Earle E, Choo KHA, et al. Active transcription and essential role of RNA polymerase II at the centromere during mitosis. *Proc Natl Acad Sci USA.* 2012;109(6):1979–84.
58. Johnson WL, Yewdell WT, Bell JC, McNulty SM, Duda Z, O'Neill RJ, et al. RNA-dependent stabilization of SUV39H1 at constitutive heterochromatin. *Elife.* 2017;6:1–32.
59. Schalch T, Steiner FA. Structure of centromere chromatin: from nucleosome to chromosomal architecture. *Chromosoma.* 2017;126(4):443–55.
60. Muller H, Gil J, Drinnenberg IA. The impact of centromeres on spatial genome architecture. *Trends Genet.* 2019;35(8):565–78.
61. Ollion J, Loll F, Cochenec J, Boudier T, Escudé C. Proliferation-dependent positioning of individual centromeres in the interphase nucleus of human lymphoblastoid cell lines. *Mol Biol Cell.* 2015;26:2550–60.
62. Ollion J, Cochenec J, Loll F, Escudé C, Boudier T. Analysis of nuclear organization with TANGO, Software for high-throughput quantitative analysis of 3D fluorescence microscopy images. *Methods Mol Biol.* 2015;1228:203–22.
63. R Core Team. R. A Language and Environment for Statistical Computing. R Found Stat Comput Vienna, Austria. 2020. <https://www.R-project.org/>.
64. Tokunaga M, Imamoto N, Sakata-Sogawa K. Highly inclined thin illumination enables clear single-molecule imaging in cells. *Nat Methods.* 2008;5(2):159–61.
65. Ovesný M, Krížek P, Borkovec J, Švindrych Z, Hagen GM. ThunderSTORM: a comprehensive ImageJ plug-in for PALM and STORM data analysis and super-resolution imaging. *Bioinformatics.* 2014;30(16):2389–90.

### Publisher's Note

Springer Nature remains neutral with regard to jurisdictional claims in published maps and institutional affiliations.

Ready to submit your research? Choose BMC and benefit from:

- fast, convenient online submission
- thorough peer review by experienced researchers in your field
- rapid publication on acceptance
- support for research data, including large and complex data types
- gold Open Access which fosters wider collaboration and increased citations
- maximum visibility for your research: over 100M website views per year

At BMC, research is always in progress.

Learn more [biomedcentral.com/submissions](https://biomedcentral.com/submissions)

