



**HAL**  
open science

## **Species-based or ecosystem-based approaches to conservation practices: lessons from the Port-Cros National Park (South-east France, Mediterranean Sea)**

Charles F. Boudouresque, F. Médail, P. Ponel, P. Astruch, A. Barcelo, Aurelie Blanfuné, T. Changeux, P. Chevaldonné, G. Cheylan, L. Le Diréach, et al.

### ► **To cite this version:**

Charles F. Boudouresque, F. Médail, P. Ponel, P. Astruch, A. Barcelo, et al.. Species-based or ecosystem-based approaches to conservation practices: lessons from the Port-Cros National Park (South-east France, Mediterranean Sea). *Vie et Milieu / Life & Environment*, 2020, 70. <hal-03342427>

**HAL Id: hal-03342427**

**<https://hal.sorbonne-universite.fr/hal-03342427v1>**

Submitted on 13 Sep 2021

**HAL** is a multi-disciplinary open access archive for the deposit and dissemination of scientific research documents, whether they are published or not. The documents may come from teaching and research institutions in France or abroad, or from public or private research centers.

L'archive ouverte pluridisciplinaire **HAL**, est destinée au dépôt et à la diffusion de documents scientifiques de niveau recherche, publiés ou non, émanant des établissements d'enseignement et de recherche français ou étrangers, des laboratoires publics ou privés.



HAL Authorization

# SPECIES-BASED OR ECOSYSTEM-BASED APPROACHES TO CONSERVATION PRACTICES: LESSONS FROM THE PORT-CROS NATIONAL PARK (SOUTH-EAST FRANCE, MEDITERRANEAN SEA)

C. F. BOUDOURESQUE<sup>1\*</sup>, F. MÉDAIL<sup>2</sup>, P. PONEL<sup>2</sup>, P. ASTRUCH<sup>3</sup>, A. BARCELO<sup>4</sup>,  
A. BLANFUNÉ<sup>1</sup>, T. CHANGEUX<sup>1</sup>, P. CHEVALDONNÉ<sup>2</sup>, G. CHEYLAN<sup>5</sup>, L. LE DIRÉACH<sup>3</sup>,  
G. MARTIN<sup>6</sup>, C. MOUSSAY<sup>4</sup>, M. PEIRACHE<sup>4</sup>, M. PERRET-BOUDOURESQUE<sup>1</sup>,  
S. RUITTON<sup>1</sup>, I. TAUPIER-LETAGE<sup>1</sup>, T. THIBAUT<sup>1</sup>

<sup>1</sup> Aix-Marseille University and University of Toulon, MIO (Mediterranean Institute of Oceanography), CNRS, IRD, Campus de Luminy, Marseille, France

<sup>2</sup> IMBE (Institut Méditerranéen de Biodiversité et d'Écologie Marine et Continentale), CNRS, IRD, Aix-Marseille Université, Université d'Avignon, France

<sup>3</sup> GIS Posidonie, OSU Pythéas, Campus de Luminy, Marseille, France

<sup>4</sup> Parc national de Port-Cros, Allée du Castel Sainte-Claire, Hyères, France

<sup>5</sup> Muséum d'Histoire Naturelle, Aix-en-Provence, France

<sup>6</sup> Université Côte d'Azur, GREDEG CNRS, Nice, France

\* Corresponding author: charles.boudouresque@mio.osupytheas.fr

BIOLOGICAL INVASIONS  
CONSERVATION  
CONTROL OF INVASIVE SPECIES  
ECOSYSTEM-BASED APPROACH  
MANAGEMENT  
MEDITERRANEAN  
NATIONAL PARK

**ABSTRACT.** – For almost 60 years, the management policy of the Port-Cros National Park (PCNP) has steadily progressed, in phase with human impacts, changes in doctrines and goals in the field of nature conservation, what was socially acceptable at a given time, a very active Scientific Council and a gradual shift from species-centered to ecosystem-based management. Here, we illustrate problems faced by a national park, together with responses or practices that are suited, or not, to an ecosystem-based approach. PCNP's doctrine has been to explain that the abundance of species fluctuates naturally, and that we must not be too hasty to intervene, that nature sometimes does things better than humans, that a national park is neither a zoo nor a botanical garden, and the purpose is not to artificially increase the species diversity. The management approach of the PCNP can constitute a source of lessons for nature protection and management.

## INTRODUCTION

In the 18<sup>th</sup> century, and for centuries earlier, the prevailing approach to nature was human-centered (Boudouresque *et al.* 2020). The French naturalist Buffon felt only contempt for the environments that we now refer to as 'natural' (Buffon 1764, 1767). It is clear that, for Buffon, the ideal nature was represented by the royal gardens of Versailles, its fountains and canals, and its adjacent forest dedicated to royal hunts. This vision of nature prevailed until the 19<sup>th</sup> century. During the first two-thirds of the 19<sup>th</sup> century, the philosophy of Saint-Simon, by promising the happiness of humanity through the scientific domestication of nature, helped to reinforce this vision. In Europe and North America, the 'Acclimatization Societies', which were set up in the 19<sup>th</sup> century and persisted until the mid-20<sup>th</sup> century, aimed to make Western nations profit from the natural wonders of the world, by introducing them to Europe and North America (*e.g.*, Matagne 1999, Planhol 2004, Faget 2007, Luglia 2014). The human-centered vision of nature persisted until the 20<sup>th</sup> century, in the guise of a dichotomy between useful species (for man) and pests (competitors of humanity);

official lists of pests, the destruction of which was recommended, were published by European government bodies (De la Blanchère 1878, Faget 2016). It is worth noting that the interest for humans is today taken into account through the concepts of ecological goods and ecosystem services: the natural processes and component that benefit human needs (Costanza *et al.* 1997, 2014, Nordlund *et al.* 2016). The Japanese Satoumi approach based upon traditional use of the coastal waters by local people in the Edo period (1600-1868 CE) and still in use, may, in a way, be considered as a modern form of the human-centered approach (Berque & Matuda 2013, Henocque 2013, Yanagi 2013). The paroxysm of the human-centered approach was the eradication of predators (wolves, coyotes, grizzly bears), in the 19<sup>th</sup> century, in the famous Yellowstone National Park (USA). This destruction was not only the result of a naive approach by creationist do-gooders (carnivores are evil and were sent by God to punish men), but also of a naive approach to ecology. Predators are essential for the good health of their prey (see the Healthy Herd Hypothesis) and, in their absence, the Yellowstone ecosystem has collapsed. It was not until the middle of the 20<sup>th</sup> century that they were successfully reintroduced or

naturally came back, partly restoring the natural character of the Yellowstone National Park (Brussard 1992).

From the 19<sup>th</sup> century on, and especially during the last decades, environmental protection and conservation have been mainly centered on the species, or on sets of species, corresponding to the specialization of taxonomists: bats, birds, sea mammals, flowering plants, etc. Of course, these taxonomists were also, in general, environmentalists, in the sense that they were also interested in habitat (a notion which should not be confused with that of the ecosystem). Together with artists, they played a major role in the emergence of the concept of nature protection (Matagne 1999, Jaffeux 2010). Species have been divided into two broad categories. On the one hand, outstanding species, including species with ‘heritage’ value, which deserve attention; on the other hand, the ‘ordinary’ species. The notion of outstanding species, together with its heritage value, is a fuzzy concept (Gauthier *et al.* 2010, Astruch *et al.* 2012, Boudouresque *et al.* 2020). It covers: (i) rare species (either threatened or not). (ii) Threatened species, according to the IUCN Red List criteria, or IUCN-like criteria at a regional scale. The IUCN Red List is often irrelevant: the IUCN is dominated by terrestrial lobbies (*e.g.*, birds, bats, flowering plants) or terrestrial-like lobbies (*e.g.*, sea mammals, marine turtles); as pointed out by Thibaut *et al.* (2016a) and by Verlaque *et al.* (2019), many marine species, such as the brown algae (kingdom Stramenopiles) *Cystoseira* and *Sargassum*, although on the brink of extinction and despite being the focus of extensive scientific literature, and fully meeting the IUCN criteria, are still considered by the IUCN as DD (Data Deficient) or NE (Non-Evaluated). (iii) Species protected by national or international legislation; unfortunately, protection is sometimes irrelevant and dependent upon taxonomic lobbies (Thibaut *et al.* 2016a, Mammides 2019, Verlaque *et al.* 2019); the seagrass *Cymodocea nodosa* (Ucria) Ascherson is protected in France, while it is an opportunistic species, that benefits from habitat degradation and climate warming, and is currently in expansion. The seabird *Larus michahellis* (Naumann, 1840) is also protected, while its proliferation is due to human impact and threatens a number of other seabirds<sup>1</sup>. (iv) Charismatic species (including iconic species) are lovable and/or aesthetically pleasing species that enjoy a coefficient of sympathy from the general public (whether threatened or not, whether or not they play an important functional role in the ecosystem) (Dubois *et al.* 2017, Thibot *et al.* 2018). Dolphins are the perfect example; the common bottlenose dolphin *Tursiops truncatus* and the striped dolphin *Stenella coeruleoalba* (Meyen, 1833) are far from being threatened; there is no evidence that their

populations are declining at a global scale (LC – Least Concern) and in Europe (DD – Data Deficient) (but see Baş *et al.* 2017 for *Tursiops truncatus* (Montagu, 1821)); they may even benefit locally from human impact (*e.g.*, the decline of their competitors, such as sharks) (Cagnolaro & Notabartolo di Sciara 1992, Gannier 1995, Aguilar 2000, IUCN SSC Cetacean Specialist Group 2007, Baş *et al.* 2017, Braulik 2019). Whatever their actual population status, national legislations fully protect all Mediterranean dolphins.

Managers, stakeholders and environmentalists worldwide often prioritize the species-centered approach (or ‘species-by-species’ approach). The protection of an iconic and endearing species is obviously easier than that of tiny zooplankton species, or of parasites, although the latter may play a far more important role than the former in the functioning of ‘healthy’ ecosystems (Combes 2001). Within the framework of the Habitat Directive (1992) and of the Natura 2000 network of nature protection areas of the European Union (EU), the species-centered approach has been widely favored compared to the ecosystem-based approach, despite the name given to the Directive. It is worth highlighting that ‘habitats’, as understood by some managers, have nothing in common with ecosystems: they just correspond to the phytosociological units (Magnoliophyta) or species assemblages housing the species of interest. However, ‘species-by-species’ management is unrealistic, particularly when the emblematic species are either predators or prey. Obviously, the protection measures cannot lead to the increase in numbers of both predator and prey populations. The issue is that the management of natural habitats has often been driven by environmentalist ‘lobbies’, solely on the basis of taxonomical considerations. As every taxonomist specialist group focuses on its specific type of organism (*e.g.*, marine mammals, turtles and tortoises, birds, iconic fish such as the dusky grouper *Epinephelus marginatus* (Lowe, 1834), flowering plants), the management of natural habitats sometimes results in a layering of taxon-focused protection measures. All in all, the management of natural habitats is often reminiscent of the tale of the blind men examining the elephant (Boudouresque *et al.* 2020).

With the ecosystem-based approach (EBA), we moved from the notion of species, which of course play a role in an ecosystem, to that of an ecosystem in which species participate and interact. The distinction may seem tenuous. However, it is a true revolution, as important as the shift from the human-centered approach, which characterized the 18<sup>th</sup> century and is illustrated by Buffon (1764, 1767), to the species-centered approach. The EBA has several strong points (Boudouresque *et al.* 2020). (i) It allows the inclusion of humans in the functioning of the ecosystem, in a natural way, thus evolving from the notion of ecosystem to that of social-ecological system. Humans are no longer set aside but are within the system. (ii) While the species-centered approach often just con-

<sup>1</sup> *Larus michahellis* is subject to a somewhat hypocritical system of ‘adaptive management’: although remaining protected, its populations are ‘regulated’ by officially mandated officials.

siders a collection of remarkable taxa, the EBA requires the construction of a framework corresponding to a conceptual model of the ecosystem. In this model, there are grounds for including even the unremarkable species (*i.e.*, species that are not rare, or threatened, or iconic). (iii) The conceptual model makes it possible to link the species together, following a network of interactions (predation, parasitism, mutualism), and to better interpret the possible fluctuations in their numbers. (iv) The conceptual model can be a stepping-stone towards analytical or numerical modeling, where flows (*e.g.*, C, N, P) between compartments are quantified. (v) The EBA also highlights the importance of tackling the coupling between adjacent ecosystems (including benthic and pelagic, terrestrial and marine ecosystems). (vi) The EBA enables the development of environmental quality indices that are much more significant and reliable than indices based on one or a few species: see *e.g.*, the Ecosystem-Based Quality Index (EBQI) for the *Posidonia oceanica* seagrass ecosystem (Personnic *et al.* 2014, Boudouresque *et al.* 2015). (vii) Invasive species constitute one of the most worrying aspects of global change, and the Mediterranean Sea is the area worldwide most hit by non-indigenous species (Galil 2008, Katsanevakis *et al.* 2013, Maxwell *et al.* 2016, Boudouresque *et al.* 2017a). Invasion issues are usually studied and managed in a single-species context: the interaction between an invasive species and a native

one, the impact of an invasive species on point or alpha species diversity, etc. In fact, invasive species rarely act in isolation, but in packs; invasive species rarely have an impact on a species alone, but on entire communities; therefore, understanding their role and impact can only be achieved in the context of the whole ecosystem (Boudouresque *et al.* 2005a, 2011). (viii) Human activities (*e.g.*, fisheries, contamination) do have an impact on particular species; however, it is only within the framework of the whole ecosystem, and within its functional compartments, that these effects can be understood, managed and if possible mitigated (*e.g.*, Halpern *et al.* 2010, Cresson *et al.* 2014, Giakoumi *et al.* 2015, Ourgaud *et al.* 2015, Kincaid *et al.* 2017). Ecosystem-Based Fishery Management (EBFM) is obviously part of the EBA (*e.g.*, Rice 2005, Tudela & Short 2005).

The Port-Cros National Park (PCNP, Provence, France, Mediterranean) was established in December 1963 (Augier & Boudouresque 1973, Boudouresque 1976, Bougeant 1990). It encompassed the Island of Port-Cros and the neighboring island and islets (Bagaud Island, La Gabinière Islet and Le Rascas Islet), *i.e.*, the Port-Cros Archipelago, situated about 8 km off the continental coast of eastern Provence (Fig. 1). Together with the land areas of the island and islets, the PCNP included a 600-m wide belt of sea, corresponding to 1300 ha in surface area, surrounding the archipelago (Boudouresque *et al.* 2013). The

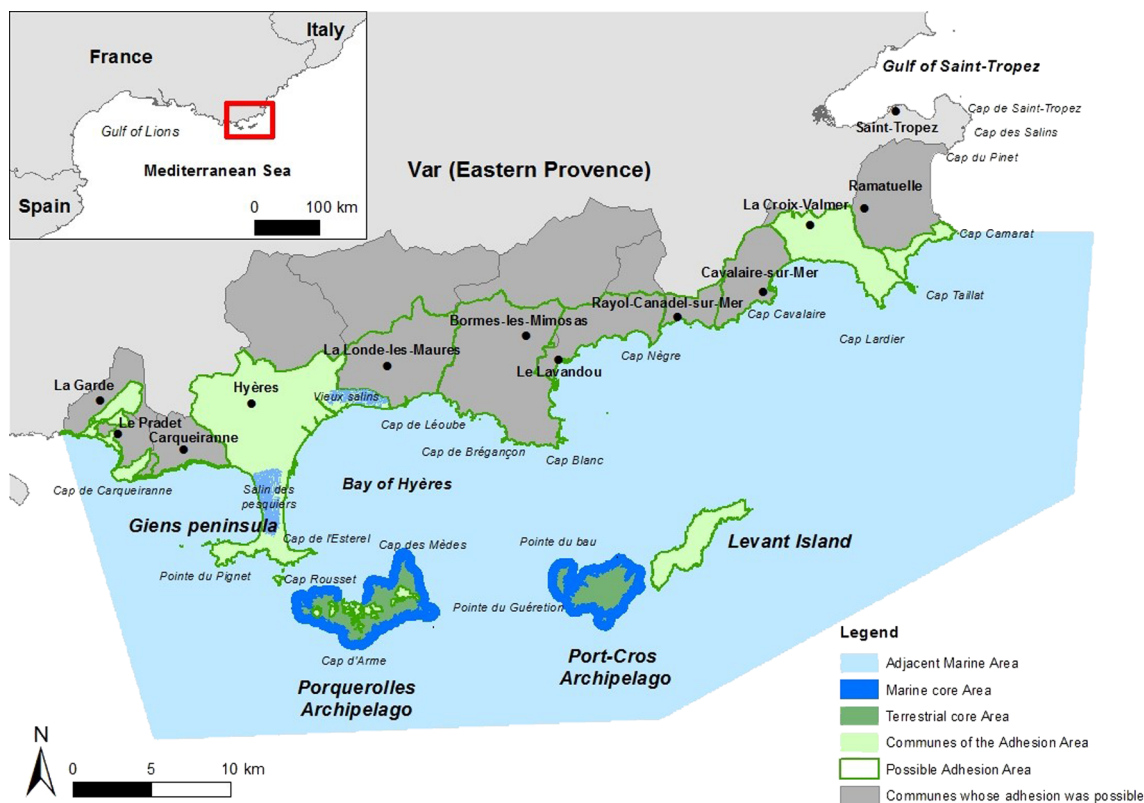


Fig. 1. – Map of the new Port-Cros National Park (N-PCNP), established in 2016. The initial PCNP, established in 1963, was restricted to the Archipelago of Port-Cros.

PCNP is one of the oldest terrestrial and marine national parks in the Mediterranean area. The oldest one is the Mljet National Park (Croatia), founded in November 1960, which stretches over 5,400 ha, including a marine area extending 500 m from the coastline (Kružić 2002).

Progressively, the PCNP has been entrusted with the management of an increasing number of territories outside the initial territory of 1963. Since 1985, the PCNP has managed the land (~950 ha), bought by the French state in 1974, situated on the neighboring island of Porquerolles. Since 1984, the park has managed the lands of the *Conservatoire de l'Espace Littoral et des Rivages Lacustres* (CERL) (Conservatoire of coastal areas and lake shores) situated at Cap Lardier, and since 1997 those situated on the island of Porquerolles (Grand Langoustier) and the Giens Peninsula (Escampobarriu). Since 1999, the PCNP has run Natura 2000 for the islands of Port-Cros and Porquerolles and is the operator of Natura 2000 for the island of Le Levant and the salt marshes at Hyères. Since 2004, the PCNP provides technical and scientific support to the *Métropole Toulon Provence Méditerranée* (MTPM) for the management of the CERL territories of Les Pesquiers and Les Vieux-Salins (Barcelo & Boudouresque 2012, Astruch *et al.* 2018, 2019, Barcelo *et al.* 2018).

Following the redefinition of the national parks by French legislation in 2006, the PCNP engaged, between 2012 and 2016, in a major redefinition and extension of its territory; the new Port-Cros National Park (N-PCNP), established in 2016, includes the Port-Cros and Porquerolles Archipelagos as core areas (both terrestrial and marine), a vast Adjacent Marine Area (AMA – *Aire Maritime Adjacente*) including the Gulf of Hyères and extending seawards to the edge of the continental shelf, and a discontinuous continental area, the Adhesion Area (AA – *Aire d'Adhésion*) including five *communes* (municipalities; the *commune* is the smallest territorial division in France) (Fig. 1; Barcelo & Boudouresque 2012, Astruch *et al.* 2018, Barcelo *et al.* 2018). The *communes* of the AA have voluntarily joined the National Park, through the signing of a charter, which defines the objectives of the National Park regarding the conservation of the natural and cultural heritage and sustainable development (Thompson *et al.* 2011, Sellier 2015, Astruch *et al.* 2018, Hogg *et al.* 2018). In contrast, some *communes* of the Potential Adhesion Area (*Aire Optimale d'Adhésion*) did not wish to be part of the N-PCNP (Fig. 1).

The core area of the N-PCNP is therefore constituted by the archipelagos of Port-Cros and Porquerolles, off the coast of Provence. For almost 60 years, the management policy of the PCNP (initially restricted to the Port-Cros Archipelago) has steadily progressed, in phase with (i) changes in doctrines and goals in the field of nature conservation; (ii) what was socially acceptable at a given time; (iii) a very active scientific research background and a level of knowledge unique for Mediterranean protected

areas (Farsac *et al.* 2013); (iv) improved governance, involving inhabitants, users and stakeholders (Hogg *et al.* 2016, Barcelo *et al.* 2018); and (v) a gradual shift from species-centered to ecosystem-based management. The PCNP Scientific Council, active, realistic and therefore respected and listened to by managers and stakeholders, has played an important role in this process (Barcelo *et al.* 2013a, Boudouresque *et al.* 2013).

Here, on the basis of several examples, we critically analyze earlier and recent issues faced by the PCNP, the N-PCNP and its Scientific Council, together with responses or practices that are suited, or not, to an ecosystem-based approach (EBA) (Tables I, II). It is worth noting that it was not our intention to provide a comprehensive list of the management issues faced by the PCNP and the N-PCNP over almost 60 years. Maintenance and restoration of the architectural heritage (forts dating from the 16<sup>th</sup> and 17<sup>th</sup> centuries), archaeological excavations and exploration of wrecks, such as that of *La Baleine* in the Bay of Port-Cros (*e.g.*, Guérout 1981, Caron 1983, Brun 1997, Long 2004, Ruitton *et al.* 2004), have not been considered. In addition, park management cannot be considered as limited to the chosen examples and the provided possible responses; scientific investigation, long-term monitoring of species, ecosystems, human uses, landscapes and seascapes are also part of the management process. For example, the mapping of the localization of fishing gear by PCNP and N-PCNP officials is pivotal for the updating of the fishing charter and the management of the artisanal fishery (see below). Finally, doing nothing is still a management response, often the best one, although sometimes difficult to explain to the public at large and policy makers who ask for visible actions (Pont 2003, Schnitzler *et al.* 2008). In any case, consideration should be given to past mistakes in any humility, firstly because it is easy to judge the past in light of today's knowledge and paradigms, and secondly because the truths of today will probably not be those of tomorrow.

#### **SPECIES-BY-SPECIES MANAGEMENT ACTIONS THAT COULD BE CONSIDERED TODAY AS INAPPROPRIATE**

The digging of a pond in the western part of Porquerolles Island is an example of the management errors driven by taxonomic lobbies, here the bat lobby (Fig. 2, Table I, T14). The probable goal was to increase the insect resource for bats (Éric Serantoni, pers. comm.), to the detriment of protected plants, which does not matter to bat lovers. It is important to note that at the time, in 2002–2003, the Scientific Council had not been consulted by the scientific service of the PCNP regarding this operation.

In the heart of the village of Porquerolles, in a cellar (known as the '*cave à vin*' – wine cellar), a colony of 65 individuals of the Geoffroy's bat *Myotis emarginatus*

Table I. – Management issues and responses from the PCNP and N-PCNP in the terrestrial realm (numbered T1 through T26). ‘No’ means that the management suggestion was not implemented, either because it was considered unnecessary or because it was deemed unrealistic, by the Scientific Council and/or by the management team of the PCNP. It is worth noting that Porquerolles has been managed by the PCNP since 1974, but it has only belonged to the national park (N-PCNP) since 2012. PC: Port-Cros Archipelago. PQ: Porquerolles Archipelago.

Nr. Dates	Management issue	Responses, results and comments	References
<b>T1</b> 1970 to 1975	Degradation of the habitat of the Tyrrhenian painted frog <i>Discoglossus sardus</i> (PC)	Construction of low walls across valleys to retain water. Failure: ponds quickly filled	Hervé Bergère (pers. comm.)
<b>T2</b> 1970s	Landscape enhancement? (PQ)	Plantation of ice plants <i>Carpobrotus</i> sp. on the back beach of Plage d'Argent	Nicolas Gérardin (pers. comm.)
<b>T3</b> 1974	An inappropriate initiative by a State official (not a PCNP staff member) at a loss – what to do with a gift from the President of an Asian country to the President of the French Republic – and said to have been responsible for the release of 3 individuals of the Sika deer <i>Cervus nippon</i> (one male and two females) (PQ)	Up to about 20 individuals. Gradual eradication by the ONCFS (Office National de la Chasse et de la Faune Sauvage – National Office of Hunting and Wildlife). Last sighting in 2016	Cheylian (1984), Cheylan & Geoffroy (2020), Alain Barcelo (pers. comm.)
<b>T4</b> 1975	Extinction of Hermann's tortoise <i>Testudo hermanni</i> (PC)	Reintroduction of 46 individuals. See text for details	Besson (1975)
<b>T5</b> Early 1980s	Providing shade for beach-goers on the Plage du Sud? Restoration of the supposed original features of the island landscape? (PC)	Plantation of Italian stone pines <i>Pinus pinea</i>	Hervé Bergère (pers. comm.)
<b>T6</b> 1982 to present	Degradation of the vegetation of the back beach (Plage du Sud) by tourists (bathers) (PC)	Construction of a low wall (1982), then installation of split stake fences ( <i>ganivelles</i> ) between 2002 and the present	Hervé Bergère (pers. comm.)
<b>T7</b> Mid-1980s	Landscape enhancement (PC)	Plantation of ice plants <i>Carpobrotus</i> sp. in the village of Port-Cros (Port-Cros Island)	Nicolas Gérardin (pers. comm.)
<b>T8</b> 1995?	Worrying decline of 4 rare and protected species of Magnoliophyta (PC and PQ)	The authors suggested clearing, thinning of vegetation and nitrogen supply via anthropization. Some brushcutting operations carried out (PQ)	Médail <i>et al.</i> (1995)
<b>T9</b> 1995 to 2003	Too many footpaths: trampling, increased risk of fire, risk for hikers in the event of fire (PC)	Half a dozen paths closed	Hervé Bergère (pers. comm.)
<b>T10</b> 1995 to present	Worrying proliferation of invasive plants (e.g. <i>Carpobrotus</i> spp., <i>Cortaderia selloana</i> , <i>Lonicera japonica</i> )	Experimental manual control of <i>Carpobrotus</i> spp., <i>Senecio angulatus</i> , <i>Salpichroa origanifolia</i> , etc.	Aboucaya (2013)
<b>T11</b> 1997-1998 to 2007	Rescue of 40 individuals of Hermann's tortoise <i>Testudo hermanni</i> kept by a resident of Saint-Tropez (eastern Provence) who was leaving the region (PQ)	Enclosure construction and feeding (lettuce, fruit)	Nicolas Gérardin (pers. comm.)
<b>T12</b> 2001	Predation of eggs and larvae of <i>Discoglossus sardus</i> by the introduced mosquitofish <i>Gambusia holbrooki</i> (PC)	Eradication of <i>Gambusia</i> by poisoning (rotenone)	Lim & Dauba (2001), Duguet <i>et al.</i> (2019)
<b>T13</b> 2002	Demolition of the cellar which housed a colony of the bat <i>Myotis emarginatus</i> , in the heart of the village (PQ)	Construction of a tower specially designed to house the bats. See text for criticism	Médard <i>et al.</i> (1999), Quekenborn <i>et al.</i> (2004)
<b>T14</b> 2002 or 2003 to present	Unknown	Digging a pond to increase the insect resource for bats (PQ)	Éric Serantoni (pers. comm.)
<b>T15</b> 2003: No	Conservation of bat species (PC)	The authors suggested fitting out the buildings to enhance the abundance of bats	Stoecklé (2003)

Table I. Continued.

Nr. Dates	Management issue	Responses, results and comments	References
T16 2003 to present	Possible decline of shearwater ( <i>Puffinus yelkouan</i> and <i>Calonectris diomedea</i> ) (PC, PQ)	Setting up of artificial nest-cavities. Poor success: available nests are not a limiting factor. See text for criticism	LPO <i>et al.</i> (2007), Bourgeois <i>et al.</i> (2015)
T17 2002 to 2011	Predation of feral cat <i>Felis catus</i> on adult Mediterranean shearwater <i>Puffinus yelkouan</i> (PC, PQ)	Eradication of feral cats by cage traps: 112 cats caught and transferred to the mainland. Increase (by 1.5) of the reproductive bird population (PC)	Tranchant & Vidal (2003), Bourgeois & Vidal (2008), Bergère (2009), Médail <i>et al.</i> (2013) Cilella Moussey (pers. comm.)
T18 2004	Extinction of the ocellated lizard <i>Lacerta lepida</i> (PQ)	The extinction is natural (disappearance of suitable habitats). No management action suggested	Cheylan & Cluchier (2004)
T19 2006 to ?	Determine numbers, social structure and spatial distribution of visitors (bikers, boaters, divers, etc.)	Setting up of the 'Observatoire Bountifles'	Le Berre <i>et al.</i> (2013), Brécard & De Luigi (2016)
T20 2007: ?	Predation of birds by the European hedgehog <i>Erinaceus europaeus</i> , non-indigenous in Porquerolles (PQ)	Suggested control of hedgehogs by trapping. See text for comments	Legrand <i>et al.</i> (2007)
T21 2011?	Beach erosion and beach-dune ecosystem impoverishment due to removal of <i>Posidonia</i> dead leaves ( <i>banquettes</i> ) (PC, PQ)	Manual removal of human-generated waste matter (e.g., plastic and metallic debris, processed wood). No removal of <i>banquettes</i> and natural driftwood	Serantoni (2015), Boudouresque <i>et al.</i> (2016, 2017b)
T22 2011 to present	Over-frequented and carrying capacity (PC, PQ)	Impact on the well-being of visitors, on safety (risk of fire, injured visitors) and on national park officials workload	Bergère & Le Berre (2011), Jolivet (2018), Deldrève & Michel (2019)
T23 2011 to present	Invasion by two exotic species, the ice plant <i>Carpobrotus</i> spp. and the black rat <i>Rattus rattus</i> (PC)	Co-eradication of <i>Carpobrotus</i> spp. and <i>Rattus rattus</i> (traps and bromadiolone)	Bourgeois <i>et al.</i> (2005), Passetti <i>et al.</i> (2012), Médail <i>et al.</i> (2013), Braschi <i>et al.</i> (2017), Buisson <i>et al.</i> (2018)
T24 2012 to present	Invasion by the Argentine ant <i>Linepithema humile</i> (PC and PQ)	Preventing its spread to remote areas of the islands, and to still non-colonized islets and Bagaud Island	Berville <i>et al.</i> (2012)
T25 2018	Light pollution (PQ)	Four bat species are good indicators of light pollution, which should be reduced	Geoffroy <i>et al.</i> (2018)
T26 2015 to present	Natural arrival of wild boar <i>Sus scrofa</i> on Port-Cros, Bagaud and Porquerolles Islands (PC and PQ)	Control <i>via</i> trapping and hunting. See text for comments	Cheylan & Geoffroy (2020), Hervé Bergère (pers. comm.)

Table II. – Management issues and responses from the PCNP and N-PCNP in the marine realm (numbered M1 through M20). ‘No’ means that the management suggestion was not implemented, either because it was considered unnecessary or because it was deemed unrealistic or unethical, by the Scientific Council and/or by the management team of the PCNP. It is worth noting that Porquerolles has been managed by the PCNP since 1974, but it has actually only belonged to the national park (N-PCNP) since 2016.

Dates	Management issue	Responses, results and comments	References
<b>M1</b> 1963 to present	Over-exploitation of fish	Ban on spear fishing and trawling	Boudouresque (1976)
<b>M2</b> 1970: No	Erosion of the <i>Posidonia oceanica</i> barrier reef in Port-Cros Bay by boats trying to cross it to reach the beach (PC)	The installation of a line of buoys and a rope across the bay was recommended (1970)	Augier & Boudouresque (1970a)
<b>M3</b> 1970s to present	Prevent anchoring by leisure boats and <i>P. oceanica</i> meadow degradation, setting up of dead weights, chains and mooring buoys (PC)	The impact of dead weights and chains was worse than that of anchors (Fig. 3). Should be removed. Dead weights were left in place while chains were removed	Robert (1983), Hervé Bergère (pers. comm.), Jean-François Magréaud (pers. comm.)
<b>M4</b> Between 1982 and 1987 to present	Erosion of the <i>Posidonia oceanica</i> barrier reef of Port-Cros Bay by boats trying to cross it to reach the beach (PC)	The installation of a line of buoys and a rope across the bay of Port-Cros	Stéphane Penverne (pers. comm.)
<b>M5</b> 1985 to present	Setting up of artificial reefs, to improve fish stocks and artisanal fishery (La Palud, PC)	See text for criticism	Charbonnel et al. (2001)
<b>M6</b> 1987	Local extinction of the giant limpet <i>Patella ferruginea</i> (French continental coasts) (La Palud, PC)	Reintroduction of individuals from Corsica (Scândula) to the Rascas Islet, Port-Cros-Archipelago. Failed, see text for comments	Laborei-Deguen (1988), Laborel & Laborei-Deguen (1991)
<b>M7</b> 1989 to present	Only research goal. Cuttings of <i>P. oceanica</i> transplanted from 12 populations (Algeria, France, Greece, Italy, Spain and Turkey) (PC)	See text for criticism	Meinesz et al. (1993)
<b>M8</b> 1993 to present	Degradation of the <i>Posidonia oceanica</i> meadow by anchoring (PC)	Prohibition of anchoring in two areas of the Port-Cros Archipelago (Fig. 7)	Ganteaume et al. (2005)
<b>M9</b> 1994 to present	The attractiveness of the seascapes and the density of emblematic fish generate a risk of over-frequentation and habitat degradation (PC)	Each scuba diver must sign the diving charter each year and abide by its rules (e.g., no feeding, no anchoring, mooring on specific buoys, no beginners)	Robert (2013a)
<b>M10</b> 1999 to present	Reconcile artisanal fishing with the protection of natural habitats, in the context of MUM management (PC)	The fishing charter is more restrictive than national and local regulations (see text)	Boudouresque et al. (2004), Cadiou et al. (2009), Robert (2013a)
<b>M11</b> 2002	Extinction of <i>Zostera noltei</i> and <i>Cymodocea nodosa</i> in the lagoon of the <i>Posidonia oceanica</i> barrier – reef (PC)	Transplantation of 71 cuttings of <i>C. nodosa</i> collected in the Bay of Port-Man, 10 m depth. Successful	Meinesz et al. (2005), Goujard et al. (2010)
<b>M12</b> 2003: No	Overfishing of <i>Homarus gammarus</i> , <i>Palinurus elephas</i> and <i>Maja squinado</i> ?	No proposal	Noël 2003
<b>M13</b> 2004	Degradation of the <i>Posidonia oceanica</i> meadow by anchoring and dead weights (see M2) (PC)	Setting up of ecological mooring (Harmony®) in the Bay of Port-Cros	Francoeur et al. (1997), Hervé Bergère (pers. comm.)
<b>M14</b> 2009 to present	Presence of the invasive macroalga <i>Caulerpa taxifolia</i> (PC and PQ)	Manual, sometimes chemical, eradication. Successful (PC)	Cottalorda et al. (2011, 2012), Esposito et al. (2012), Barcelo et al. (2013b)

Table II. Continued.

Dates	Management issue	Responses, results and comments	References
<b>M15</b> 2010	Regression of shallow <i>Cystoseira</i> spp. in Provence	Installation of zygote traps (10 cm x 10 cm x 5 cm cement blocks) in littoral rockpools. Failure. See text for comments	Robvieux (2013)
<b>M16</b> 2012 to present	Promoting 'reserve effect' (PQ)	Regulating amateur fishing and leisure boating, according to a zoning system for the marine core area	Barcelo <i>et al.</i> (2018)
<b>M17</b> 2015 to present	Promoting 'reserve effect' and artisanal fishery (PQ)	Setting up of a No-Take-Zone (zone resource) in the south-eastern part of PQ	Rincé <i>et al.</i> (2015), Astruch <i>et al.</i> (2016, 2017), Barcelo <i>et al.</i> (2018)
<b>M18</b> 2016: No	Overgrazing of <i>Cystoseira brachycarpa</i> forests (PC)	Limitation of herbivorous populations (sea urchins <i>Paracentrotus lividus</i> and teleost fish <i>Sarpa salpa</i> )	Thibaut <i>et al.</i> (2016b)
<b>M19</b> 2018-2019	Mass mortality of the fan mussel <i>Pinna nobilis</i>	No transplantation of individuals to deeper areas, but physical protection of surviving individuals from anchoring and nets	Catanese <i>et al.</i> (2018), Cabanella-Reboredo <i>et al.</i> (2019)
<b>M20</b> 2018-2019	Oil spill of the CSL Virginia	Warning of the Scientific Council and the director of the N-PNPC against over-cleaning. See text for comments	Boudouresque <i>et al.</i> (2019b, c)



Fig. 2. – An artificial pond, on Porquerolles Island, dug in the early 2000s, possibly to provide an insect resource for bats. Photo © Charles-François Boudouresque.

(Geoffroy, 1806) had been established (Table I, T13). This bat species, which feeds primarily on spiders and flies, is an anthropophilic and cave-dwelling species; it is listed in the Annex II of the Habitats Directive of the European Union (Médard *et al.* 1999, Médard & Muratet 2000, Flaquer *et al.* 2008). The cellar was destroyed in 2002; a tower (Tour du Palmier), with a shelter, was specially designed and built to house the colony of bats (Quekenborn *et al.* 2004). Unfortunately, the bats preferred to settle in the stairwell of an apartment building, which caused nuisance for the inhabitants. Some individuals have taken up residence in a ruined fort, the Galéasson (Clélia Moussey, unpubl. data). It took three years for the colony to 'adopt' the tower. In Port-Cros Island, Stoecklé (2003) suggested fitting out buildings either recent, ancient or abandoned ruins, with shelters and water supply systems purpose-designed to enhance the colonies of bats. However, the Scientific Council firmly rejected these proposals, and the ruined Sardinière farm, when restored (in 2011-2012), was not equipped with features intended to increase bat populations (Table I, T15).

The establishment of artificial nest-cavities (artificial burrows) for two species of shearwater, *Puffinus yelkouan* (Acerbi, 1827) and *Calonectris diomedea* (Scopoli, 1769), also typically resulted from the species-by-species approach to management (Table I, T16). These two species may be locally in decline (Courbin *et al.* 2018), but are not classified as threatened (LC in the IUCN Red list of threatened species). Although natural nest-cavities are not a limiting factor (only 33 % are occupied), 95 artificial nest-cavities were installed in Porquerolles, Port-Cros and Bagaud Islands, between 2003 and 2013, in an attempt to increase the nesting population (Bourgeois & Vidal 2007, Bourgeois *et al.* 2015). Very few of the artificial nests have been occupied (none at Bagaud Island) and the number of fledgling chicks from these nests has been insignificant (LPO PACA *et al.* 2007); Bourgeois *et al.*

(2015) expressed more optimistic conclusions, although upon examination of their data, these can be challenged. Either way, whether it was a failure or a rather questionable success, that does not change the fundamental question: the role of a National Park is neither that of a zoo, nor a facility for breeding a species, even if it was threatened elsewhere (which, moreover, is not the case here).

Hermann's tortoise *Testudo hermanni* (Gmelin, 1789) had thrived at Port-Cros Island until the middle of the 19<sup>th</sup> century. Its extinction would have been caused by man (Jahandiez 1914). A first reintroduction project was rejected by the Scientific Council of the PCNP, in 1970. A second project was subsequently approved and 46 individuals were released in 1975 at two sites, Vallon de la Solitude and Plateau de la Marma (Table I, T4) (Besson 1975). The reintroduction was done using individuals donated by residents of the Massif des Maures (eastern Provence) (Cheylan 1983). At that time, the complex genetic structure of Hermann's tortoise populations was unknown; in fact, the populations of Provence and Greece belong to distinct haplotypes (subspecies? distinct species? see *e.g.*, Fritz *et al.* 2006 and Nivelles 2017, for discussion); however, the Hermann's tortoises, which were marketed in France and kept by local inhabitants, generally belonged to the oriental (Greek) haplotypes. It is therefore probably oriental haplotypes that have been reintroduced in Port-Cros, rather than the native western haplotype. The re-introduction seems to have been unsuccessful in the long term (Cheylan 1983). However, this example highlights the need to be extremely cautious when reintroducing species. Similarly, in Porquerolles, 40 Hermann's tortoises, abandoned by a resident of Saint-Tropez (Provence), were housed in enclosures and fed for several years (Table I, T11). Obviously, the role of a protected area is not to take over the role of the societies for the prevention of cruelty to animals (such as the *Société Protectrice des Animaux* in France and the Royal Society for the Prevention of Cruelty to Animals in England and Wales).

To prevent anchoring by leisure boats and degradation of the *Posidonia oceanica* meadow (Augier & Boudouresque 1970a, b, Boudouresque *et al.* 1995, Cossu *et al.* 2006, Boudouresque *et al.* 2012, Rouanet *et al.* 2012), 27 concrete deadweight, connected by chains, and mooring buoys, were set up in the Port-Cros Bay in the 1970s (Table II, M3) (Jean-François Magréaud, pers. comm.). In fact, the impact of dead weights and chains was worse than that of anchors (Fig. 3) (Robert 1983, Boudouresque *et al.* 2012, Robert 2013b). The Scientific Council of the PCNP therefore recommended the removal of dead weights and chains, and their replacement by 'ecological moorings' (Harmony® or Harmony-like). However, the removal of the dead weights would have aggravated the damage: it was decided to leave them in place and to remove only the chains, in 1982-1983 (Jean-François Magréaud, pers. comm.). Subsequently, ecological moor-

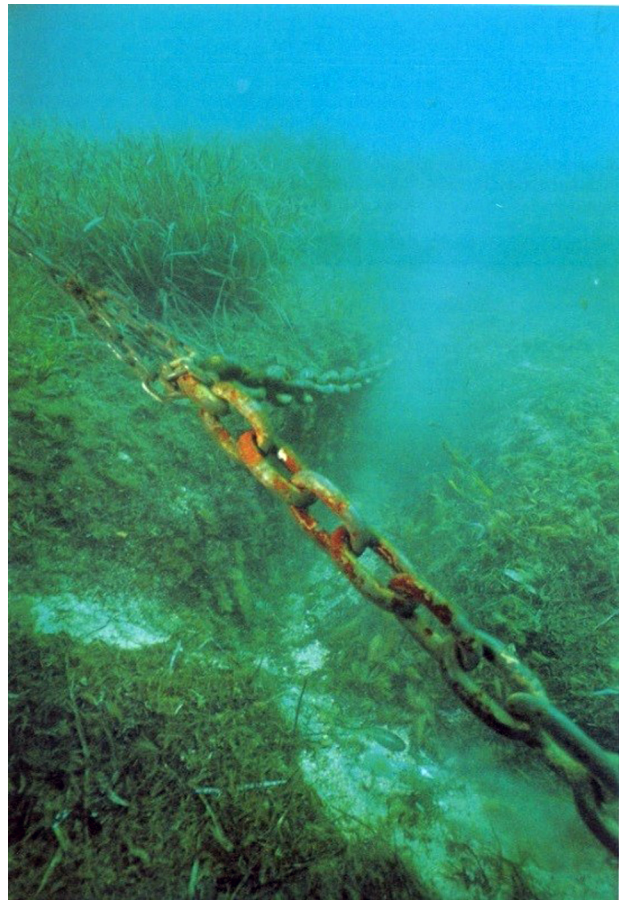


Fig. 3. – Furrow dug in the *matte* of a *Posidonia oceanica* meadow by a mooring chain of a mooring. Anonymous photo.



Fig. 4. – Four cement blocks (10 cm × 10 cm × 5 cm) in a rock pool on Port-Cros Island, with a *Cystoseira crinita* forest. They were intended to trap *Cystoseira* zygotes. Photo © Thierry Thibaut.

ings (Harmony®) were set up in 2004-2005 (Jean-François Magréaud and Hervé Bergère, pers. comm.). These moorings, which appear to have been a success, are still in place.

The installation of cement blocks in littoral rock pools (Pointe de Malalongue, Pointe du Tuf, Port-Man Bay) was intended to trap zygotes of several *Cystoseira* species (Fucales, Phaeophyceae), such as *C. crinita*, *C. barbata* and *C. foeniculacea* (Robvieux 2013) (Fig. 4; Table I, M15). These species are declining in Provence, French Riviera, French Catalonia and other Mediterranean areas (Thibaut *et al.* 2005, 2015, Blanfuné *et al.* 2016). However, this is not the case at Port-Cros Archipelago (Thibaut *et al.* 2016b). The operation was a failure: no seedling of *Cystoseira* was observed on the blocks after the reproduction period, and the winter storms have washed away or thrown onto the coastal rocks 80 % of the blocks, which were not attached to the substrate (Robvieux 2013). Not only was the operation a failure, but also it is likely that these blocks, during storms and before being washed away, damaged the healthy *Cystoseira* stand. This operation is therefore emblematic of inappropriate actions for the protection of the environment: (i) the role of the PCNP is not to cultivate species, even if they are threatened elsewhere; (ii) very inexpertly designed operations can be counterproductive, and contribute to threats to healthy populations.

The case of the European hedgehog *Erinaceus europaeus* Linnaeus, 1758 in Porquerolles Island deserves special discussion (Table I, T20). The species is native and is widespread in Western Europe. However, it seems to have been originally absent, or became naturally extinct, from a number of small offshore islands, including Porquerolles (Legrand *et al.* 2007). In the latter, it was first observed in 1984 (Cheylan 1984), perhaps deliberately introduced, near the village, and subsequently spread to the whole island. Its diet is diverse, mainly constituted of plants and arthropods, but it can also prey on birds nesting on the ground. Three bird species, reared and released to the wild for hunting purposes, are particularly concerned (Tranchant *et al.* 2002, Legrand *et al.* 2007): (i) the pheasant *Phasianus colchicus* Linnaeus, 1758, native to Asia, was introduced to Europe in the ancient Greece era; (ii) Reeve's pheasant *Syrnium reevesii* (J. E. Gray, 1829), native to China, was introduced in Europe in the late 19<sup>th</sup> century; (iii) the red-legged partridge *Alectoris rufa* Linnaeus, 1758, is native to Europe (Peterson *et al.* 1993, Pascal *et al.* 2006). For three other bird species, the threats are more putative (Legrand *et al.* 2007): the Mediterranean shearwater *Puffinus yelkouan*, Cory's shearwater *Calonectris diomedea*, and the nightjar *Caprimulgus europaeus*. Finally, predation by hedgehog may putatively concern the corn bunting *Emberiza calandra* Linnaeus, 1758; however, this species is far from being threatened in Europe (Legrand *et al.* 2007). It is worth noting that the European hedgehog *Erinaceus europaeus* is a protected species in Europe. All in all, the destruction of a protected species (the hedgehog), native to Europe and the absence of which from Porquerolles could be relatively recent, in order to protect the hunting of non-native species, as

pointed out by Legrand *et al.* (2007), can hardly be considered as a priority management response from N-PCNP.

The wild boar *Sus scrofa* Linnaeus, 1758 is native to Eurasia, including Europe. Its abundance in southern France is currently on the increase (Cheylan & Geoffroy 2020). Several causes can account for its proliferation; this is mainly due to the increase in the surface area of forest and maquis due to the severe reduction of agro-silvopastoral practices in Mediterranean France, but also the elimination of predation by the wolf *Canis lupus* Linnaeus, 1758, feeding in winter by hunters (in French: *agrainage*), climate warming that reduces the natural winter mortality and increases the breeding potential, etc. The wild boar is a good swimmer, able to naturally reach not too distant offshore islands. From the late 19<sup>th</sup> century, it had been absent from Port-Cros Island, but it perhaps (probably?) thrived in the island during the long time periods when Port-Cros was not permanently occupied by man. It was first sighted on Port-Cros Island in 2008; since 2015, a permanent population of wild boar has naturally colonized Port-Cros Island and Porquerolles Island (Table I, T26). In Port-Cros, it has been blamed for digging up the soil, in search of food, and as a result degrading some populations of rare and protected plants, notably geophytes, and of the rare and locally endangered Sardinian frog (*Discoglossus sardus*) located in some temporary ponds. The so-called 'negative' effects of wild boar must be compared with the 'positive' effects of wild boar, which are part of an ecosystem approach: (i) aeration of the soil; (ii) the return of coprophagous insects, eliminated by chemical vermifuges used for domestic livestock; boar droppings have become a real refuge for many of these endangered insects everywhere (Philippe Ponel, unpubl. data). These coprophagous insects are also widely exploited by bats; (iii) the return of necrophagous insects, for example *Necrodes littoralis* Linnaeus, 1758, specialized in large corpses. However, the permanent inhabitants of the island were disturbed by its unfamiliar presence and possible danger for people, including tourists. The Scientific Council of the N-PCNP was of the opinion that the role of a National Park is not to combat a natural process, and its impact on associated species (even if they are rare and protected plants), which would be in accordance with an ecosystem-based approach; however, taking into consideration the fact that the wild boar is not a threatened species, and that the well-being of inhabitants is an important feature of the N-PCNP governance, it was not opposed to the control of the wild boar, *via* trapping and hunting. This attitude is consistent with the principles for ethical wildlife control (Sellier 2015, Dubois *et al.* 2017). About 200 individuals have been killed in 2018 and 2019 (Hervé Bergère, pers. comm.).

The attempt to reintroduce the giant limpet *Patella ferruginea* Gmelin, 1791 to Port-Cros, from individuals from northern Corsica, can be *a priori* considered a good idea (Laborel-Deguen 1988, Laborel & Laborel-Deguen

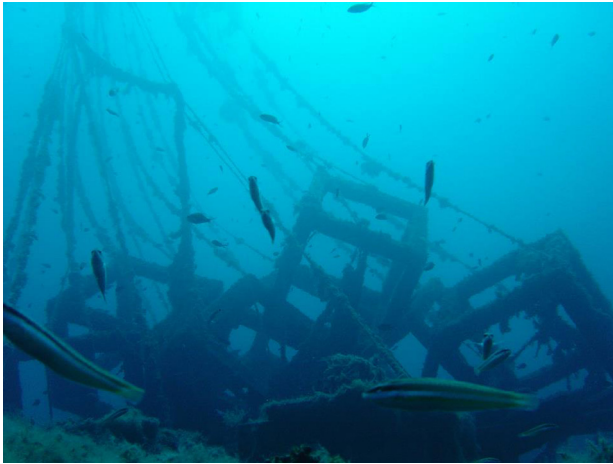


Fig. 5. – The setting up of artificial reefs. La Palud, Port-Cros Island. Photo Philippe Robert © Port-Cros National Park (PCNP). Courtesy of the PCNP.

1991, Laborel-Deguen & Laborel 1991a) (Table II, M6). The species, which is long-lived and can reach a diameter of 11 cm, is a western Mediterranean endemic which has been present in the whole western basin of the Mediterranean. It dwells in the midlittoral zone and has been harvested by humans since the Neolithic period (Espinosa & Ozawa 2006, Colonese *et al.* 2011). It has become extinct in most of its original range, *e.g.*, in Provence and French Riviera (Laborel-Deguen & Laborel 1991b). The attempt does not seem to have been successful in the long term; the survival rate was 57 % after one day, 27 % after one year, 12 % after two years (Laborel-Deguen 1988, Laborel-Deguen & Laborel 1991a). The few very isolated individuals that have been observed in the Port-Cros archipelago, far from the Rascas islet, probably do not come from the small-reintroduced population, but from larvae from Corsica drifting with the currents (Meinesz *et al.* 2001).

In 1989, 278 cuttings and seedlings of the seagrass *Posidonia oceanica* originating from 12 populations in different parts of the Mediterranean (Algeria, France, Greece, Italy, Spain and Turkey) were transplanted to La Palud Bay (Port-Cros Island), at 11 m depth (Table II, M7). The goal was solely scientific: to check whether or not the morphological differences between these strains would be conserved when cultivated together in the same area and the same habitat (Meinesz *et al.* 1993). The choice of the Port-Cros National Park was purely technical: the ban on fishing in La Palud Bay (Astruch *et al.*, 2018) guaranteed that this underwater ‘botanical garden’ would not be disturbed by fishing gear. Today, at a time when biological invasions, including gene pollution, are considered as one of the most worrying environmental issues (Carlton & Hodder 1995, Schmitz & Simberloff 1997, Boudouresque *et al.* 2017a), it is difficult to understand why such a scientific experiment was authorized within a national park.

Is the goal of a national park the artificial increase in fish stocks, via artificial reefs? (Fig. 5, Table II, M5). The shutdown of sewage, and therefore the increase in domestic pollution, would have the same effect (see *e.g.*, Ourgaud *et al.* 2015). In fact, the installation of these artificial reefs corresponded to a demand from artisanal fishers, and it facilitated the subsequent establishment of the fishing charter (Robert 2013a, b). In addition, the goal was solely experimental (Charbonnel *et al.* 2001). The outcome could therefore be positive.

### MANAGEMENT ACTIONS THAT CAN HAVE RELEVANCE IN THE CONTEXT OF ECOSYSTEM-BASED MANAGEMENT

The Tyrrhenian painted frog *Discoglossus sardus* Tschudi *in* Otth, 1837 is a species occurring in Corsica, Sardinia and on several small islands: Port-Cros, Le Levant (Provence), Giglio, Montecristo and Monte Argentario (Tuscany) (Knoepffler 1962). The species is not threatened in Corsica and Sardinia: it is listed by the IUCN as being of ‘Least Concern’ (LC) (Andreone *et al.* 2009). However, isolated populations on small islands can be more vulnerable and they could represent distinct conservation units. On Port-Cros Island, a small dam (30 m long, 6 m high) was built in the Vallon de la Solitude to create a water reservoir intended to irrigate crops, now abandoned, located downstream. This reservoir is used by *D. sardus* for its reproduction. The mosquitofish *Gambusia holbrooki* Girard, 1859, deliberately introduced in 1992, threatened the eggs and larvae of *D. sardus*; it was therefore eradicated in 2001 by poisoning (rotenone) (Lim & Dauba 2001, Duguet *et al.* 2019) (Table I, T12). The eradication was successful: it has never reappeared there (Hervé Bergère, pers. comm.).

The eradication of feral cats *Felis catus* Linnaeus, 1758 in Port-Cros (Table I, T17), predators of introduced rats together with the native Mediterranean shearwater *Puffinus yelkouan*, has been a success, insofar as it made it possible to improve the numbers and the reproductive success of the Mediterranean shearwater (Tranchant *et al.* 2002, Legrand *et al.* 2008). It also gave rise to a process of reflection on the functioning of the ecosystem and the interactions between cats, black rats *Rattus rattus* Linnaeus, 1758 (main prey of cats, with shearwater) and shearwater, a possible prey of rats (Bourgeois *et al.* 2005, Bergère 2009, Zarzoso-Lacoste *et al.* 2009, Médail *et al.* 2013). The management of the cat-rat-shearwater ‘triangle’ can be described as typical of an ecosystem-based management approach, and is consistent with ethical principles (see Dubois *et al.*, 2017).

The co-eradication of the ice plant *Carpobrotus* spp. and of the black rat *Rattus rattus* on Bagaud Island is also part of an ecosystem-based approach, since there are mutualistic interactions between ice plants and rats

(Bourgeois *et al.* 2005); in addition, all the compartments of the ecosystem were studied, before and after eradication (Table I, T23). Such a multidisciplinary approach has never been implemented in the context of the eradication of invasive species (Tranchant *et al.* 2002, Médail *et al.* 2013, Berville *et al.* 2015, Braschi *et al.* 2017, Buisson *et al.* 2018). Of course, the risk that co-evolution between black rats and native species, such as the European leaf-toed gecko *Euleptes europaea* (Gené, 1839), would have resulted in an adaptive equilibrium, putatively disrupted by the eradication, especially in the case of reinvasion by a different population of black rats, should be carefully considered (Delaugerre *et al.* 2019).

The control of invasive species also occurs in the AA of the N-PCNP: *e.g.*, (i) the destruction of the pond slider *Trachemys scripta* (Thunberg in Schoepff, 1792), a semiaquatic turtle native to southeastern United States and northern Mexico, which threatens the native European pond turtle *Emys orbicularis* Linnaeus, 1758 in the Vieux Salins saltmarsh of Hyères (Lascève 2014, Perrot *et al.* 2016); (ii) the uprooting of *Caulerpa taxifolia* at Le Pradet (eastern Provence) (Pironneau *et al.* 2014, Pironneau & Ringwald 2015, Barcelo *et al.* 2016).

There has been a myth, both among the public and among the first scientists working on this insular area, that the forest on the island of Port-Cros was an ‘original and pristine forest’, in a way a primary forest. In fact, the island has undergone strong human impact throughout its history, and especially over the last centuries: cultivation, massive deforestation to fuel a caustic soda plant or to export charcoal, overgrazing, etc. The holm oak *Quercus ilex* Linnaeus forest is therefore relatively recent and terrestrial ecosystems, their flora and fauna, are in a dynamic of rapid evolution (Médail *et al.* 2013). In contrast to the natural evolution of ecosystems over time, to ‘freeze’ landscapes in a state that is only a snapshot, fixed by the fragile memory of the observer, is a temptation that characterizes many environmentalists and even scientists. The PCNP, except perhaps at its very beginnings (Table I, T5, T8), did not fall into this trap, based on an archaic, naïve and even completely wrong notion of biodiversity (see Boudouresque 2014 for the biodiversity concept). ‘Opening’ the habitats, in order to artificially increase the species richness, has not been the doctrine of the PCNP, N-PCNP and its scientific Council (see below for discussion). The best solution is probably to include natural disturbances as promoter of the patch dynamic of these terrestrial ecosystems (Médail *et al.* 2013).

The ecosystem constituted by the dune, the beach and the overlying layer of *Posidonia oceanica* dead leaves (*banquette*) (hereafter dune-beach-*banquette* ecosystem) harbors a unique fauna and flora and has a very high heritage value, in addition to providing valuable ecosystem services (Médail *et al.* 2013, Serantoni 2015, Boudouresque *et al.* 2017b). For the supposed pleasure of tourists, *banquettes* are removed from most Mediterranean beach-



Fig. 6. – Natural driftwood, on the beach of L’Oustaou de Diéu (Porquerolles Island), after an episode of extreme flooding (Spring 2012), left in place. Photo © Charles-François Boudouresque.

es, treated as a waste and thrown on the garbage dump. This removal has dire ecological and economic consequences: the destruction of the ecosystem, erosion of the beaches, catastrophic attempts to restore them *via* riprap or sand replenishment; as the fate of beached dead leaves is to return sooner or later to the sea, and to feed (organic carbon, nutrients) coastal ecosystems, their destruction deprives coastal areas of fish, available to artisanal fishers (~35 kg wet mass of fish per metric ton of *banquette*) (Boudouresque *et al.* 2016). In addition, it seems that this ‘tourist demand’ is rather something dreamed up by tour operators and ill-informed mayors: even when uninformed, and massively when properly informed, tourists do not ask for the removal of the *banquette* (Boudouresque *et al.* 2017b). The PCNP strategy has been, in the core areas of Port-Cros and Porquerolles Archipelagos, to leave the *banquette* and the natural driftwood, to manually clean the beaches of human-generated waste matter (*e.g.*, plastic and metallic debris, processed wood) and to inform the general public about the ecological and economic issues (Fig. 6, Table I, T21) (Serantoni 2015). This concept of ‘ecological beach’, born in Port-Cros, is currently gaining ground in the Mediterranean (Borrello *et al.* 2019, Astier *et al.* 2020; Rotini *et al.* 2020).

The management of the artisanal fishery around the Port-Cros Archipelago can be referred to as an ecosystem-based approach (Table II, M10). For most environmentalists, many stakeholders and some managers, the paradigm of a Marine Protected Area (MPA) is the banning of all human activities, mainly artisanal fishery (No-Take Zones, NTZs) (Boudouresque *et al.* 2005b). In fact, how ‘natural’ NTZs really are can be challenged. In the Mediterranean Sea, some major top predators, such as the monk seal *Monachus monachus* (Hermann, 1779), and sharks are locally or functionally extinct, respectively. Under these conditions, considering that the catch by an extinct population of monk seal was of the same order as

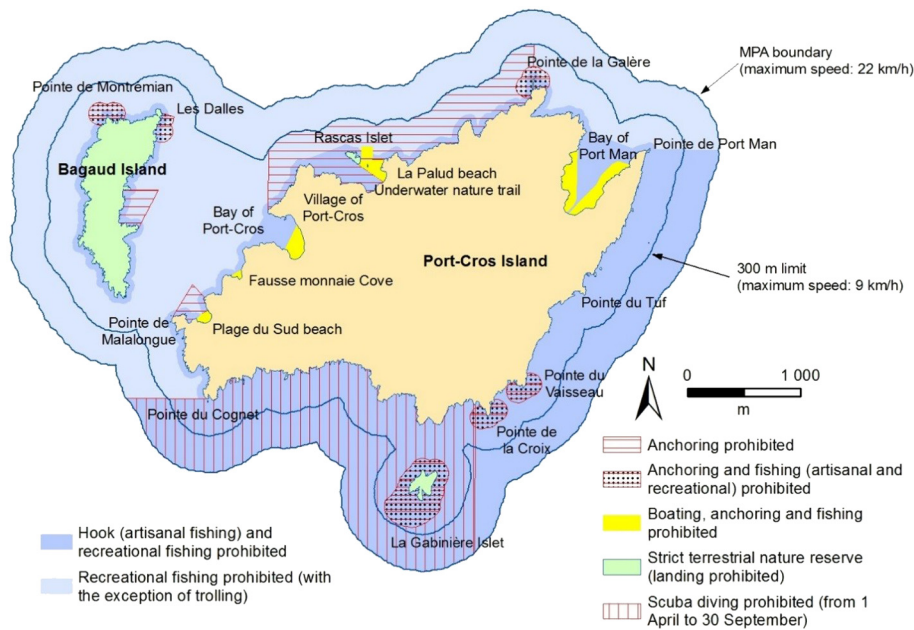


Fig. 7. – Artisanal and recreational fishing regulations within different areas of the Port-Cros Archipelago MPA. Areas where anchoring, artisanal and recreational fishing are prohibited are reserved for diving. 2014 edition.

the current catch by fishers, the complete ban on artisanal fishing (small-scale fishing) could generate an artificial deficit in top predators (Boudouresque *et al.* 2004, Ferretti *et al.* 2008, Astruch *et al.* 2018, Boudouresque *et al.* 2019a). In contrast to the NTZ management, the management of the marine area of the Port-Cros Archipelago MPA can clearly be assigned to the MUM type (Multi-Use Management). It is characterized by complex zoning of the MPA (Fig. 7; see discussion for the complexity of this zoning), based on the uses, conservation goals for the habitats and ecosystems and clearly displayed priorities (artisanal fishing rather than recreational fishing); step by step, recreational fishing has been banned in the whole of the MPA, which favors artisanal fishers and helps them to bear the constraints of the fishing charter (see below) (Le Diréach *et al.* 2018, Boudouresque *et al.* 2019a). To be authorized to fish inside the Port-Cros Archipelago, each fisher has to sign the fishing charter each year and to abide by its rules. The charter is more restrictive than national regulations and the regulations of the local *prud'homme des pêcheurs* (fishers' guild), *e.g.*, maximum length of the vessel, mesh size, length of fishing nets, maximum soak times, number of hooks and traps. The charter is updated annually, based on scientific monitoring and in consultation with the fishers (Boudouresque *et al.* 2004, Cadiou *et al.* 2009, Robert 2013a, b). It is important to note that these regulations, together with the general regulations of the PCNP and of the N-PCNP (*e.g.*, ban on trawling, spear fishing, angling) are strictly enforced. The MUM strategy, as opposed to the NTZ strategy promoted by conservationist NGOs (Non-Governmental Organizations), is gaining ground today in the world of conservation (see *e.g.*, Burbano *et al.* 2020). Of course, the MUM strategy can include NTZs in the framework of the zoning, such as the 'zone ressource' of the Porquerolles Archipelago

(Rincé *et al.* 2015, Astruch *et al.* 2016, 2017, Barcelo *et al.* 2018) and the six areas of Port-Cros Island surrounding diving spots where artisanal and recreational fishing are banned, so constituting actual NTZs (Fig. 7, Table II, M17).

A mass mortality event has since 2016 been affecting the emblematic fan mussel *Pinna nobilis* Linnaeus, 1758, throughout the Mediterranean (Table II, M19) (Vásquez-Luis *et al.* 2017, Cabanellas-Reboredo *et al.* 2019). It is due to a unicellular haplosporidan parasite, *Haplosporidium pinnae*, probably introduced from the northwest Pacific (Catanese *et al.* 2018). On the basis of a hypothetical assumption that resistance to the parasite would be better at low temperature and therefore at depth, some researchers have proposed transplanting individuals to deep water areas. Some MPAs have viewed this proposal favorably (Parc National des Calanques, western Provence) or even implemented it (Observatoire Marin du Golfe de Saint-Tropez, eastern Provence). The Scientific Council of the PCNP opposed this proposal, which had no scientific basis; in addition, transplantation would increase mortality, by stress or by predation in the new area (De Gaulejac & Vicente 1990, San Martín 1995, Reveret *et al.* 2015; but see Bakran-Petricioli *et al.* 2019). On the other hand, the PCNP has implemented *in situ* physical protection, by means of exclusion zones from anchoring and fishing nets, of surviving individuals, probably resistant to the parasite, and likely to found new populations.

Over-frequented areas is increasingly an issue worldwide in protected areas. The impacts of over-frequented areas not only concern landscapes, seascapes, emblematic species and the functioning of ecosystems, but also the well-being of inhabitants, visitors and park officials, the overall safety (risk of fire, evacuation of injured visitors, etc.) and the

effectiveness of the surveillance by officials of protected areas of environmental offences (Table I, T22) (Bergère & Le Berre 2011). The definition of a carrying capacity is however a complex issue, and the N-PCNP has carefully addressed the question (Wagar 1964, 1974, Deldrève & Michel 2019). As pointed out by Lindberg *et al.* (1997), the question is not ‘How many is too many?’ but ‘What are the desired conditions?’ The extent to which the local police can, or should, play a role in the protection of natural areas from damage caused by a large number of visitors, in the context of French legislation, has been explored by Jolivet (2018); this author suggested improvements to the present legislation<sup>2</sup>. Improvements in the management of tourism by the local ‘business ecosystem’ (Porquerolles), or its restructuration, have also been suggested (Van der Yeught 2018).

On October 7<sup>th</sup>, 2018, the ro-ro ferry *Ulysse* collided with the *CSL Virginia*, 28 km northwest of the Cap Corse (Corsica) (Table II, M20). A maximum of 600 m<sup>3</sup> (the capacity of the fuel tanks, if full) of fuel leaked out from the tanks of the *Virginia*. Most of this oil (90 %) was recovered by spill response vessels, according to the French Navy authority (Boudouresque *et al.* 2019b, c). Evaporation further removed about 30 % of the remaining oil (Philippe Cuny, pers. comm.). This oil spill (40 t?) is therefore negligible when compared with historical hazards which have hit European coasts, *e.g.*, *Amoco Cadiz* (1978, Brittany, 223,000 t), *Haven* (1991, Genoa, Italy, 20,000 t), *Erika* (1999, Bay of Biscay, 19,000 t), and *Prestige* (2002, Galicia, 60,000 t) (Marchand *et al.* 1979, Cognetti & Cognetti 1992, Le Moigne & Laubier 2004). Winds and currents pushed remaining oil slicks toward the coasts of Provence (Boudouresque *et al.* 2019b, c). Part of the areas fouled belongs to the core area (Archipelagos of Port-Cros and Porquerolles) or to the transitional area (*Aire Maritime Adjacente*) of the N-PCNP. The Scientific Council of the N-PCNP and its director issued (23<sup>rd</sup> October 2018) a warning against the risks, for the natural environment and the ecosystems, of an over-reaction and the use of heavy and intensive cleaning methods on the rocks and beaches; they recommended *e.g.*, (i) no use of chemicals (*e.g.*, dispersants, detergents); (ii) no hot water high pressure washing (HWWPW), with the exception of rocky areas accessible to pedestrians, close to the beaches; (iii) no cleaning in areas of high ecological sensitivity such as *Lithophyllum byssoides* (Lamarck) Foslie rims; (iv) on beaches, taking care to remove as little sand as possible and leave as much wood as possible on the spot; (v) *Posi-*

*donia oceanica banquettes* of dead leaves, on beaches and rocks, should be preserved, with manual removal limited to surface layers exhibiting oil. The increase of ecological damage due to cleaning has been relatively well documented (*e.g.*, Broman *et al.* 1983, Poncet & Le Bail 2001, De la Huz *et al.* 2005, Jézéquel & Poncet 2011). Unfortunately, the French authorities (*Préfet du Département du Var*) followed the recommendations of the ship’s insurers and entrusted to a private company, internationally recognized for its expertise, the task of removing all traces of oil. While the territory of the core area of the PCNP was relatively spared from disproportionate cleaning, thanks to the intervention of the Scientific Council and the decisions of the PCNP’s director, this was not the case for the rest of the area, which was intensively and disproportionately cleaned up, both in areas accessible to tourists in summer and in inaccessible areas. Rocks were stripped of the whole of the mediolittoral and supralittoral ecosystem (Cyanobacteria, lichens, *Littorina*, *Euraphia*, *Chthamalus*, *Patella*, etc.) via HWWPW, *P. oceanica banquettes* were totally removed, regardless of whether or not oil patches were present on the upper layer of dead leaves, etc. These *banquettes* are of paramount importance for coastal ecosystems and provide a wide range of ecosystem services (Boudouresque *et al.* 2016, 2017b, Rotini *et al.* 2020). The result of this inappropriate over-cleaning is that a very minor oil spill, occurring 9 months before the next tourist season, was transformed by the polluters themselves (*via* the insurers), by carrying out a disproportionately large-scale cleanup operation, into an ecological disaster, for which natural ecosystem restoration will take at least 10 years (Boudouresque *et al.* 2019b, c). Obviously, the N-PCNP strategy can be referred to as ecosystem-based.

The legal policy implemented by the N-PCNP is also an illustration of an ecosystem-based approach. First of all, it should be recalled here that the law is not limited to regulation. For example, the legal policy is also concerned with claims for compensation for ecological damage (Martin 2020). In this regard, for some time now, the National Park has ceased to base its claims on the number of individuals of a species that have been destroyed or disturbed, but instead focuses on the resulting loss of ecosystem services on the one hand and, on the other hand, on the expenditure needed to support natural recovery of damaged ecosystems.

## DISCUSSION AND CONCLUSIONS

The species-by-species approach to management is a convenient and recurrently tempting way to try to protect nature. It is convenient, because it is easily understood by the general public, because it does not require the study of the cascading consequences of the action on a given species, because it is far easier to implement than an eco-

<sup>2</sup> These improvements are underway. The French Senate unanimously voted to amend art.L.2213-4 of the General Code of Local Authorities, in order to authorize the mayor of the municipality to prohibit or regulate access to certain areas if such access is likely to harm the protection of the environment or the character of the site. The National Assembly must in turn soon examine this proposal.

system-based approach, and, last but not least, because it is strongly supported by ‘taxonomic lobbies’. It is recurrent, since it dates back to the 19<sup>th</sup> century and continues to be the dominant practice of international NGOs and administrations, including in France the Ministry of the Environment and, to some extent, its official agency, the OFB (*Office Français de la Biodiversité*), although the EBA is currently gaining ground within the OFB. The requirements of the French Ministry of the Environment have sometimes borne more resemblance to accountancy practices than to scientific ones: how many species (even casual or observed once) are there in your protected area? Is this number on the increase when compared with that of the previous year? Is it higher than in the adjacent non-protected area? (implying: if so, your management is good). Of course, this criticism is something of a caricature: officially, ‘and habitats’ is always added to the essential inventory of species; but it sometimes seems rather like a kind of ecologically correct polite formula.

This accountants’ concept of environmental management is often associated with a simplistic, and even erroneous, vision of biodiversity, where biodiversity is viewed as the number of species. The higher the number of species, the better the status or the health of a habitat is considered to be. Disturbances are wrongly thought to reduce the number of species, while in reality they often increase it (see *e.g.*, Ourgaud *et al.* 2015). In most cases, the highest number of species is reported for intermediate levels of disturbance (IDH – Intermediate Disturbance Hypothesis and DEM – Dynamic Equilibrium Model) (*e.g.*, Lubchenco & Menge 1978, Huston 1979, Valdivia *et al.* 2005, Svensson *et al.* 2009). In fact, biodiversity is a complex multidimensional concept, defined by at least five scales (evolutionary, functional, organizational, spatial and heterogeneity scales) and more than a hundred metrics. These metrics can give apparently contrasting responses, when they are in fact complementary (Sala & Knowlton 2006, Boudouresque 2014, Boudouresque *et al.* 2017a).

The species-by-species approach does not take into account natural fluctuations in the numbers of a species within an ecosystem, as a function of predator-prey cycles, parasite-host cycles, natural inter-annual fluctuations of climate, or threshold effects of physical-chemical and biological parameters that make a population or an ecosystem shift from one state to another (regime shift or phase shift; see *e.g.*, Cury & Shannon 2004, Boudouresque *et al.* 2005a, Litzow & Cianelli 2007). Control of supposed harmful species, in order to increase prey populations, often backfires, with a further unexpected decrease in prey populations (Doak *et al.* 2008). We must not be too hasty to intervene as soon as a species declines or another species proliferates; ecosystems are in constant evolution, contrary to what the old climax concept suggested. This is particularly true for the terrestrial ecosystems of Port-Cros Island, which are slowly recovering

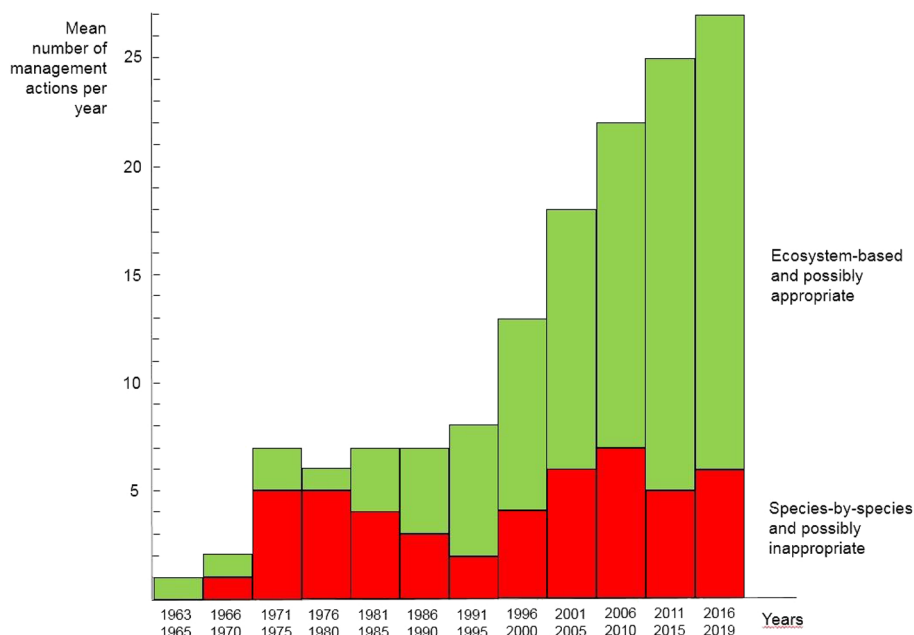


Fig. 8. – In the background, the ‘bats tower’ (Tour du Palmier) in the village of Porquerolles. The half-moon opening at the top of the tower is the entrance to the shelter specially built to house a colony of Geoffroy’s bat *Myotis emarginatus*. Photo © Charles-François Boudouresque.

after the very strong human impact of the 19<sup>th</sup> century, that is to say almost yesterday (Médail *et al.* 2013). This is also true for marine ecosystems, even if it seems at first glance less apparent: effluent from a caustic soda plant, relocated from Marseille because it was too polluting, overfishing by artisanal fishers, extirpation of large and emblematic fishes by spear fishers, the extermination by fishers of a top-predator, the monk seal *Monachus monachus*, supposed to be a fish thief, marked the 19<sup>th</sup> and 20<sup>th</sup> centuries, before the creation of the PCNP (Marchessaux 1989a, b). The steady but slow recovery of emblematic fish populations, such as the dusky grouper *Epinephelus marginatus* and the brown meagre *Sciaena umbra* Linnaeus, 1758, illustrate a recovery process still in progress (Harmelin & Marinopoulos 1993, Harmelin & Ruitton 2007, Harmelin *et al.* 2010, Harmelin 2013).

Each ‘taxonomic lobby’ wishes to favor its group of taxa, to increase the abundance of individuals and its species richness. There is certain logic in increasing the numbers of a ‘threatened’ species, which also benefits from broad support from the general public. However, ‘threatened’ species are not always actually threatened: they can even be proliferating thanks to humans; they may be fortunate to belong to an emblematic and lovable taxon. For example, Geoffroy’s bat *Myotis emarginatus*, for which a tower with artificial shelter (‘Tour du Palmier’) was specially built in the village of Porquerolles (Fig. 8, Table I, T13), is far from being a threatened species: its abundance is stable, close to a natural state, and it is classified as LC (Least Concern) in the IUCN Red List (Hutton *et al.* 2007). Taxonomic lobbies also do not consider the possible impact of the increase of their beloved taxon on other taxa. When ‘bat lovers’ asked the PCNP to promote the abundance of bats through shelters and water supply systems, they were not asked about the effect of their proliferation on other species using the same food

Fig. 9. – Mean number of management actions, species-by-species and possibly inappropriate and ecosystem-based and possibly appropriate, over time. Data from Tables I and II. Many management actions, both appropriate (e.g., T21 and M1) and inappropriate (e.g., T16 and M7), are long-lasting and therefore appear over several time periods.



resource, nocturnal insects (e.g., the Tyrrhenian painted frog *Discoglossus sardus*, shrew, the European leaf-toed gecko *Euleptes europaea*, birds, etc.) (Table I, T15). It is difficult to explain to the general public, and to journalists who have almost always a literary rather than scientific culture, that national parks are neither botanical gardens nor zoos, and that a natural ecosystem can be poor in species. The general public and journalists are often confused and incredulous when they are told that the most effective way to increase the number of species is to open paths and agricultural plots in the forest, to create garbage dumps and to spread fertilizer (see e.g., Landrieu & Gilg 2010, Boudouresque 2014).

In an admirable outburst of anger against taxonomic lobbies and their simplistic view of biodiversity, Landrieu & Gilg (2010) wrote: *‘To make us believe that we must cut down forests to open the environment to more species of birds, flowers and butterflies and that, by doing so, we are helping to increase biodiversity, there no, I do not agree! If we let ourselves be guided by the sole objective of the maximum number of species, which leads to increasing the ‘species richness’ of a site and not its ‘biodiversity’, the ultimate destiny of the manager could be the maintenance of botanical gardens and zoos! When the environment is naturally forest, it is forest species that constitute biodiversity. Our role is to improve if necessary the functionality of this environment, its ‘state of conservation’. It’s the ecosystem that decides its biodiversity, based on ecological potential, resources, colonization, dispersal of species. We must beware of ‘overselling’ biodiversity, by trying, for example, to change a forest environment that is naturally ‘poor’ in species, into an environment that is artificially rich’* (translated from French by the authors) (see also Pavé 2019). It is worth noting that the so-called

species poverty of the ‘closed’ natural forest environments is an idea propagated by the lobby of flowering plant taxonomists; for insect specialists, the closed forest environments exhibit on the contrary an incredible species richness: saprophagous, saproxylphagous, phytophagous, predators of litter, old wood, old bark, mosses, tree cavities, etc.

Supporters of the species-by-species approach sometimes claim that they are also thinking at ecosystem level, because they consider the habitat of the species. Habitat is generally defined on a descriptive basis, the composition in species, phytosociological in terrestrial environment, fauna and flora in marine environment (e.g., Molinier 1960, Pérès & Picard 1964, Corine 2020). So it is a kind of vicious circle. Of course, habitat is not the ecosystem; habitat and ecosystem are completely different concepts; the habitat is a descriptive concept (physical-chemical characteristics, lists of species), while the ecosystem is a functional concept (the interactions of species between them and with the environment).

Doing nothing is often the best management response, although sometimes difficult to explain to the public at large and policy makers avid for visible actions (Pont 2003, Schnitzler *et al.* 2008). Unfortunately, national authorities, in particular in France (Ministry of the Environment, *Agence de l’Eau*), often favor visible actions (artificial reefs, transplantation, artificial restoration, etc.), excessively expensive, generally ineffective and even seriously destructive of the natural environment, while the use of the budgets for the reduction of impact would have been one or two orders of magnitude more effective.

With the exception of an initial ‘teething phase’, and of the Island of Porquerolles before it officially became

part of the core of the Port-Cros National Park, the PCNP, the N-PCNP and its Scientific Council often avoided the trap of interventionism. Step by step, the National Park has undoubtedly moved away from a species-by-species culture towards an ecosystem-based approach (EBA) (Fig. 9). Possible biases are (i) that ancient inappropriate actions (1963-1985) could have been omitted and (ii) that the effects of ancient inappropriate actions (*e.g.*, the 'bat tower' and the artificial reef, not removed) have persisted to this day; the trend towards an ecosystem-based approach is therefore probably more marked. However, while it is easy to criticize a species-by-species approach to management, with its contradictions and with its absurd, caricatured, sometimes grotesque errors, it is much more difficult to apply an EBA to management. Obviously, it is far easier to describe the ups and downs of a species than to understand the terrifying complexity of the functioning of an ecosystem. In addition, understanding the functioning of an ecosystem requires a multi-disciplinary team, therefore more funding, longer time series, while being handicapped by a lesser understanding on the part of the general public and managers. Finally, if the inappropriate actions of the past are easy to criticize in light of today's ecology and current concepts of nature conservation, it should be recognized that the evidence of today will probably appear ridiculous in 50 years. If our actions or our inaction lead to the disappearance of a species, and if our successors have maintained the cult of the rare and patrimonial species, they will severely criticize our errors of appreciation and management.

The complexity of the marine zoning of the Port-Cros archipelago MPA is a reflection of and the result of the MUM doctrine and almost 60 years of progress in management thinking. Although it has proven to be quite effective, in terms of governance (Sellier 2015, Barcelo *et al.* 2016, 2018, Deldrève & Michel 2019), the protection of ecosystems (Personnic *et al.* 2014, Thibaut *et al.* 2017; but see Astruch *et al.* 2012) and the maintenance of sustainable human activities (artisanal fishing, diving, pleasure boating) (Boudouresque *et al.* 2004, Cadiou *et al.* 2009, Robert 2013a, Le Diréach *et al.* 2018), its complexity makes it difficult for users to read and makes its implementation by the park guards difficult and time consuming.

International literature on the issue is often produced by theorists with no hands-on experience of the reality and governance of a protected area. It is also produced by tricksters who 'sell' paper parks (no reference! It would be inappropriate). It is important here to emphasize that the PCNP and the N-PCNP are among the ~10 % of effective parks (Meinesz & Blanfuné 2015), where the legislation is more or less correctly implemented and respected, taking into account the very many constraints imposed on the manager and the difficulty of convincing the judicial institutions of the importance of protection issues.

ACKNOWLEDGEMENTS. – The authors are indebted to J F Magréau (Neptune Environnement), A Pegliasco (TMML), H Bergère, S Penverne and P Robert for valuable information on mooring in the Bay of Port-Cros, to H Bergère, N Gérardin & É Serantoni for providing data on management activities of the Port-Cros National Park, and to M Paul, a native English speaker, for proofreading the text.

## REFERENCES

- Aboucaya A 2013. Bilan des recherches scientifiques et des actions de gestion concernant les plantes exotiques envahissantes terrestres menées au sein du Parc national de Port-Cros (Var, France). *Sci Rep Port-Cros Natl Park* 27: 415-435.
- Aguilar A 2000. Population biology, conservation threats and status of Mediterranean striped dolphins (*Stenella coeruleoalba*). *J Cetacean Res Manage* 2(1): 17-26.
- Andreone F, Lecis R, Miaud C, Corti C, Sindaco R, Romano A 2009. *Discoglossus sardus*. In The IUCN Red List of threatened species. IUCN, Gland. Accessed 3 January 2018.
- Astier JM, Boudouresque CF, Pergent G, Pergent-Martini C 2020. Non-removal of the *Posidonia oceanica* 'banquette' on a beach very popular with tourists: lessons from Tunisia. *Sci Rep Port-Cros Natl Park* 34: 15-21.
- Astruch P, Boudouresque CF, Bonhomme D, Goujard A, Antonioli PA, Bonhomme P, Perez T, Ruitton S, Saint-Martin T de, Verlaque M 2012. Mapping and state of conservation of benthic marine habitats and assemblages of Port-Cros national Park (Provence, France, northwestern Mediterranean Sea). *Sci Rep Port-Cros Natl Park* 26: 45-90.
- Astruch P, Goujard A, Oprandi A, Bricout R, Rouanet É, Le Diréach L, Ruitton S 2016. Évaluation de l'état zéro de la zone ressource de Porquerolles : mesure de l'indicateur EBQI sur les écosystèmes "Herbier à *Posidonia oceanica*" et "Roche infralittorale à algues photophiles". GIS Posidonie, Marseille: 18 p.
- Astruch P, Rouanet É, Le Diréach L, Goujard A 2017. Évaluation du peuplement de poissons de la zone ressource de Porquerolles – État zéro. GIS Posidonie, Marseille: 47 p + annexes.
- Astruch P, Boudouresque CF, Rouanet É, Le Diréach L, Bonhomme P, Bonhomme D, Goujard A, Ruitton S, Harmelin JG 2018. A quantitative and functional assessment of fish assemblages of the Port-Cros Archipelago (Port-Cros National Park, north-western Mediterranean Sea). *Sci Rep Port-Cros Natl Park* 32: 17-82.
- Astruch P, Boudouresque CF, Changeux T, Faget D, Lascève M, Le Diréach L, Massinelli L, Moussy F 2019. From a species-centred to an ecosystem-based management approach. A case study of the saltmarshes of Hyères (Provence, France). In Gargiulo C, Zoppi C Eds, Planning, Nature and Ecosystem Services: 29-38.
- Augier H, Boudouresque CF 1970a. Végétation marine de l'île de Port-Cros. VI. Le récif-barrière de posidonies. *Bull Mus Hist Nat Marseille* 30: 221-228 + 1 map.
- Augier H, Boudouresque CF 1970b. Végétation marine de l'île de Port-Cros (Parc National). V. La baie de Port-Man et le problème de la régression de l'herbier de Posidonies. *Bull Mus Hist Nat Marseille* 30: 145-164 + 1 plate.

- Augier H, Boudouresque CF 1973. Dix ans de recherches dans la zone marine du Parc national de Port-Cros (France). Première partie. *Ann Soc Sci. Nat Archéol Toulon Var* 25: 119-138.
- Bakran-Petricioli T, Kipson S, Petricioli D 2019. Transplantation of endangered Mediterranean habitat-forming bivalve *Pinna nobilis* as a prescribed conservation measure: a case study. In Langar H, Ouerghi A Eds, Proceedings of the 6<sup>th</sup> Mediterranean Symposium on Marine Vegetation, Antalya, Turkey, 14-15 January 2019, RAC/SPA, Tunis: 115-116.
- Barcelo A, Boudouresque CF 2012. Rôle de la recherche dans un parc national : 50 ans de recherche dans le Parc national de Port-Cros. *Bull Soc Zool Fr* 137(1-4): 11-24.
- Barcelo A, Aboucaya A, Boudouresque CF, Gillet P, Harmelin JG, Jarin M, Martin G, Maurer C, Médail F, Peirache M, Ponel P, Sellier G 2013a. The scientific strategy of the Port-Cros National Park for the 2013-2022 period. *Sci Rep Port-Cros Natl Park* 27: 485-492.
- Barcelo A, Cottalorda JM, Peirache M, Jaubert R, Bergère H, Esposito G, Formentin JY, Gillet P, Houard T, Jullian E, Lefebvre C, Moreau S, Pironneau E, Robert P, Viviani RA, Boudouresque CF 2013b. Deux décennies d'amélioration des techniques de recherche et de contrôle du Chlorobionte invasif *Caulerpa taxifolia* (Vahl) C. Agardh dans les eaux du Parc national de Port-Cros (Méditerranée, France). *Sci Rep Port-Cros Natl Park* 27: 437-450.
- Barcelo A, Cottalorda JM, Peirache M, Abiven T, Gomez MC, Viviani RA, Bergère H, Baudin E, Jullian E, Moreau S, Maxime L, Masinski I, Esposito G, Fournial P, Obadia C, Poncin D, Formentin JY, Pironneau É, Nironi M, Casalta B, Morin JP, Barral M, Boudouresque CF 2016. Définition d'une politique et d'une stratégie globale de gestion concertées du chlorobionte invasif *Caulerpa taxifolia* à l'échelle des côtes et de l'aire maritime adjacente du Parc national de Port-Cros (Provence, France). *Sci Rep Port-Cros Natl Park* 30: 45-64.
- Barcelo A, Bernardi P, Buzaud C, Creusefond M, Despinoy P, Gabriel J, Hily G, Mazzella C, Millier L, Cresp G, Ridolfi J, Coupez L, Crossetti G, Renoux S, Prodromides M 2018. Mode de gouvernance pour la gestion concertée du cœur marin de l'île de Porquerolles, au sein du Parc national de Port-Cros (Provence, France): retour des acteurs sur 10 années de pratique. *Sci Rep Port-Cros Natl Park* 32: 83-111.
- Baş AA, Affinito F, Martin S, Vollmer A, Gansen C, Morris N, Frontier N, Nikpaljevic N, Vujović A 2017. Bottlenose dolphins and striped dolphins: species distribution, behavioural patterns, encounter rates, residency patterns and hotspots in Montenegro, South Adriatic. Montenegro Dolphin Project Annual report, Marine Mammal Research Association, Bar: 64 p.
- Bergère H 2009. Gestion du chat domestique *Felis catus* (Linnaeus, 1758) sur l'île de Port-Cros. *Sci Rep Port-Cros Natl Park* 23: 123-128.
- Bergère H, Le Berre S 2011. Définition et étalonnage d'un système d'évaluation de la capacité de charge de l'île de Port-Cros (Hyères, France). *Sci Rep Port-Cros Natl Park* 25: 81-104.
- Berque J, Matsuda O 2013. Coastal biodiversity management in Japanese satoumi. *Mar Policy* 39: 191-200.
- Berville L, Renucci M, Provost E 2012. Mise en place de protocoles de contrôle de la Fourmi d'Argentine (*Linepithema humile*) sur les îles de Port-Cros et de Porquerolles (Var, France). *Sci Rep Port-Cros Natl Park* 26: 91-108.
- Berville L, Passetti A, Ponel P 2015. Diversité des Formicidae de la réserve intégrale l'île de Bagaud (Var, France), avant l'éradication de deux taxa invasifs majeurs: *Rattus rattus* et *Carpobrotus* spp. *Sci Rep Port-Cros Natl Park* 29: 23-40.
- Besson J 1975. La réintroduction de la Tortue d'Hermann *Testudo hermani robertmertensi* (Wermuth), à Port-Cros. *Trav Sci Parc Natl Port-Cros* 1: 37-40.
- Blanfuné A, Boudouresque CF, Verlaque M, Thibaut T 2016. The fate of *Cystoseira crinita*, a forest-forming Fucale (Phaeophyceae, Stramenopiles), in France (North Western Mediterranean Sea). *Estuar Coast Shelf Sci* 181: 196-208.
- Borrello P, Chiesa S, Maltese S, Silvestri C, Scarpato A 2019. Management of *Posidonia oceanica* beached accumulations and the 'ecological beach' model. *Rapp Comm Int Mer Médit* 42: 218.
- Boudouresque CF 1976. Dix ans de protection de la mer à Port-Cros (Parc national). In Atti Tavola rotonda internazionale 'La Biologia marina per la Difesa e per la Produttività del Mar', Livorno: 163-199.
- Boudouresque CF 2014. Insights into the diversity of the biodiversity concept. *Sci Rep Port-Cros Natl Park* 28: 65-86.
- Boudouresque CF, Arrighi F, Finelli F, Lefèvre JR 1995. Arrachage des faisceaux de *Posidonia oceanica* par les ancrées : un protocole d'étude. *Rapp Comm Int Mer Médit* 34: 21.
- Boudouresque CF, Cadiou G, Guerin B, Le Direach L, Robert P 2004. Is there a negative interaction between biodiversity conservation and artisanal fishing in a Marine Protected Area, the Port-Cros National Park (France, Mediterranean Sea). *Sci Rep Port-Cros Natl Park* 20: 147-160.
- Boudouresque CF, Ruitton S, Verlaque M 2005a. Large-scale disturbances, regime shift and recovery in littoral systems subject to biological invasions. In Velikova V, Chipev N Eds, Large-Scale Disturbances (Regime Shifts) and Recovery in Aquatic Ecosystems: Challenges for Management Towards Sustainability. Unesco, Paris: 85-101.
- Boudouresque CF, Cadiou G, Le Diréac'h L 2005b. Marine protected areas: a tool for coastal areas management. In Levner E, Linkov I, Proth JM Eds, Strategic Management of Marine Ecosystems. Springer, Dordrecht: 29-52.
- Boudouresque CF, Klein J, Ruitton S, Verlaque M 2011. Biological Invasion: the Thau Lagoon, a Japanese biological island in the Mediterranean Sea. In Ceccaldi HJ, Dekeyser I, Girault M, Stora G Eds, Global Change: Mankind-Marine Environment Interactions. Springer, Netherlands: 151-156.
- Boudouresque CF, Bernard G, Bonhomme P, Charbonnel E, Diviacco G, Meinesz A, Pergent G, Pergent-Martini C, Ruitton S, Tunesi L 2012. Protection and conservation of *Posidonia oceanica* meadows. RAMOGÉ and RAC/SPA, Tunis: 202 p.
- Boudouresque CF, Barcelo A, Harmelin JG, Martin G, Maurer C, Médail F, Sellier G, Viviani RA 2013. The Scientific Council of a national park, the Port-Cros National Park: 50 years of conservation culture. *Sci Rep Port-Cros Natl Park* 27: 297-317.
- Boudouresque CF, Personnic S, Astruch P, Ballesteros E, Belan-Santini D, Bonhomme P, Botha D, Feunteun E, Harmelin-Vivien M, Pergent G, Pastor J, Poggiale JC, Renaud F, Thibaut T, Ruitton S 2015. Ecosystem-based versus species-based approach for assessment of the human impact on the Mediterranean seagrass *Posidonia oceanica*. In Ceccaldi H, Hénocque Y, Koike Y, Komatsu T, Stora G, Tusseau-Vuillemin MH Eds, Marine Productivity: Perturbations and Resilience of Socio-Ecosystems. Springer International, Switzerland: 235-241.

- Boudouresque CF, Pergent G, Pergent-Martini C, Ruitton S, Thibaut T, Verlaque V 2016. The necromass of the *Posidonia oceanica* seagrass meadow: Fate, role, ecosystem services and vulnerability. *Hydrobiologia* 781: 25-42.
- Boudouresque CF, Blanfuné A, Fernandez C, Lejeune C, Pérez T, Ruitton S, Thibaut D, Thibaut T, Verlaque M 2017a. Marine Biodiversity – Warming vs. biological invasions and overfishing in the Mediterranean Sea: Take care, ‘One train can hide another’. *MOJ Ecol Environ Sci* 2(4): 1-13.
- Boudouresque CF, Ponel P, Astruch A, Barcelo A, Blanfuné A, Geoffroy D, Thibaut T 2017b. The high heritage value of the Mediterranean sandy beaches, with a particular focus on the *Posidonia oceanica* ‘banquettes’: a review. *Sci Rep Port-Cros Natl Park* 31: 23-70.
- Boudouresque CF, Astruch P, Changeux T, Ruitton S, Thibaut T 2019a. Marine Protected Areas: Multi-Use Management (MUM) vs. No-Take Zones (NTZ) and the efficiency of locally managed artisanal fishery. *Rapp Comm Int Mer Médit* 42: 266.
- Boudouresque CF, Blanfuné A, Ruitton S, Thibaut T 2019b. Marées noires : à nettoyer avec modération. *Le Tropézien* 105: 14-15.
- Boudouresque CF, Blanfuné A, Martin G, Perret-Boudouresque M, Taupier-Letage I 2019c. The Virginia oil-spill in Provence: a tale of an inappropriate over-cleaning. *Rapp Comm Int Mer Médit* 42: 100.
- Boudouresque CF, Astruch P, Bănaru D, Blanchot J, Blanfuné A, Carlotti F, Changeux T, Faget D, Goujard A, Harmelin-Vivien M, Le Diréac L, Pagano M, Perret-Boudouresque M, Pasqualini V, Rouanet É, Ruitton S, Sempéré R, Thibaut D, Thibaut T 2020. The management of Mediterranean coastal habitats: a plea for a socio-ecosystem-based approach. *In* Ceccaldi HJ, Hénocque Y, Komatsu T, Pouzet P, Sautour B, Yoshida J Eds, *Evolution of Marine Coastal Ecosystems Under the Pressure of Climate Change*. Springer nature, Switzerland: 277-290.
- Bougeant P 1990. Un Parc en forme d’île: bilan des vingt-cinq premières années de fonctionnement du Parc National de Port-Cros. *In* Atti del 1° Convegno internazionale “Parchi marini del Mediterraneo, Aspetti naturalistici e gestionali”, San Teodoro, 28-30 avril 1989: 75-83.
- Bourgeois K, Vidal É 2007. Yelkouan shearwater nest-cavity selection and breeding success. *C R Biol* 330: 205-214.
- Bourgeois K, Vidal É 2008. The endemic Mediterranean yelkouan shearwater *Puffinus yelkouan*: distribution, threats and a plea for more data. *Oryx* 42(2): 187-194.
- Bourgeois K, Suehs CM, Vidal É, Médail F 2005. Invasional meltdown potential: facilitation between introduced plants and mammals of French Mediterranean islands. *Ecoscience* 12(2): 248-256.
- Bourgeois K, Dromzée S, Vidal É 2015. Are artificial burrows efficient conservation tools for seabirds? A case study of two sympatric shearwaters on neighbouring islands and guidelines for improvement. *Biol Conserv* 191: 282-290.
- Braschi J, Caceres M, Delcourt N, Tournier F, Ponel P 2017. Conséquences sur les communautés d’insectes volants de l’éradication simultanée du Rat noir (*Rattus rattus*) et des griffes de sorcières (*Carpobrotus* spp.) dans le cadre du programme de restauration écologique de l’île de Bagaud (Parc national de Port-Cros, France) : résultats préliminaires. *Sci Rep Port-Cros Natl Park* 31: 71-79.
- Braulik G. 2019. *Stenella coeruleoalba*. The IUCN Red List of Threatened Species 2019: e.T20731A50374282. Downloaded on 13 February 2020.
- Brécard D, De Luigi C 2016. Fréquentation touristique de Port-Cros et Porquerolles: les enseignements de la base de données Bountfiles. *Sci Rep Port-Cros Natl Park* 30: 65-94.
- Broman D, Ganning B, Lindblad C 1983. Effects of high pressure, hot water shore cleaning after oil spills on shore ecosystems in the northern Baltic Proper. *Mar Environ Res* 10: 173-187.
- Brun JP 1997. Les Îles d’Hyères. Fragments d’Histoire. Actes Sud, Arles: 196 p.
- Brussard PF 1992. The greater Yellowstone ecosystem: redefining America’s wilderness heritage. *Science* 255: 1148-1150.
- Buffon GL 1764 (as: Leclerc, comte de Buffon). Histoire naturelle, générale et particulière, avec la description du cabinet du Roi. Tome douzième. Imprimerie royale, Paris.
- Buffon GL 1767 (as: Leclerc, comte de Buffon). Histoire naturelle, générale et particulière, avec la description du cabinet du Roi. Tome quinzisième. Imprimerie royale, Paris.
- Buisson É, Aboucaya A, Affre L, Braschi J, Chenot J, Dailly S, Hess M, Passetti A, Pavon D, Ramone H, Vidaller C, Krebs-Amy É 2018. Rétablissement des communautés végétales après éradication des griffes de sorcières (*Carpobrotus* sp.) dans le cadre du programme de restauration écologique de l’île de Bagaud (Parc national de Port-Cros, France) : résultats 5 ans après l’éradication. *Sci Rep Port-Cros Natl Park* 32: 123-135.
- Burbano DV, Meredith TC, Mulrennan ME 2020. Exclusionary decision-making processes in marine governance: the rezoning plan for the protected areas of the ‘iconic’ Galapagos Islands, Ecuador. *Ocean Coast Manage* 185 (105066): 1-15.
- Cabanelas-Reboredo M, Vázquez-Luis M, Murre B, Álvarez E, Deudero S, Amores Á, Addis P, Ballesteros E, Barrajón A, Coppa S, García-March JR, Giacobbe S, Giménez Casaldueiro F, Hadjioannou L., Jiménez-Gutiérrez SV, Katsanevakis S, Kersting D, Mačić V, Mavrič B, Patti FP, Planes S, Prado P, Sánchez J, Tena-Madialdea J, De Vaugelas J, Vicente N, Belkhamssa FZ, Zupan I, Hendriks IE 2019. Tracking a mass mortality outbreak of pen shell *Pinna nobilis* populations: a collaborative effort of scientists and citizens. *Sci Rep* 9(13355): 1-11.
- Cadiou G, Boudouresque CF, Bonhomme P, Le Diréac L 2009. The management of artisanal fishing within the Marine Protected Area of the Port-Cros National Park (northwest Mediterranean Sea): a success story? *ICES J Mar Sci* 66: 41-49.
- Cagnolaro L, Notabartolo di Sciarra G 1992. Attività di ricerca sui Cetacei e loro status di conservazione in Italia. *Boll Mus Ist Biol Univ Genova* 56-57: 53-85.
- Carlton JT, Hodder J 1995. Biogeography and dispersal of coastal marine organisms: experimental studies on a replica of a 16th-century sailing vessel. *Mar Biol* 121: 721-730.
- Caron P 1983. Découverte historique des forts des îles d’Hyères. *Cah Parc Natl Port-Cros* 5: 108 p.
- Catanese G, Grau A, Valencia JM, Garcia-March JR, Vázquez-Luis M, Alvarez E, Deudero S, Darriba S, Carballal MJ, Villalba A 2018. *Haplosporidium pinnae* sp. nov., a haplosporidan parasite associated with mass mortalities of the fan mussel, *Pinna nobilis*, in the Western Mediterranean Sea. *J Invert Pathol* 157: 9-24.
- Charbonnel E, Ody D, Le Diréac L 2001. Effet de la complexification de l’architecture des récifs artificiels du Parc national de Port-Cros (Méditerranée, France) sur les peuplements ichtyologiques. *Sci Rep Port-Cros Natl Park* 18: 163-217.
- Cheylan G 1984. Les mammifères des îles provençales. *Trav Sci Parc Natl Port-Cros* 10: 13-25.

- Cheyland G, Geoffroy D 2020. Colonisation des îles d'Hyères (Var, sud de la France) par le sanglier *Sus scrofa*. *Sci Rep Port-Cros Natl Park* 34: 45-56.
- Cheyland M 1983. Statut actuel des Reptiles et Amphibiens de l'archipel des îles d'Hyères (Var, sud-est de la France). *Trav Sci Parc Natl Port-Cros* 9: 35-51.
- Cheyland M, Cluchier A 2004. Statut actuel et passé du Lézard ocellé (*Lacerta lepida lepida*) sur l'île de Porquerolles. Parc national de Port-Cros, Hyères: 15 p.
- Cognetti G, Cognetti G 1992. Inquinamenti e Protezione del Mare. Calderinu, Bologna: x + 318 p.
- Colonese AC, Mannino MA, Bar-Yosef Mayer DE, Finlayson JC, Lubell D, Stiner MC 2011. Marine mollusc exploitation in Mediterranean prehistory: an overview. *Quat Int* 239: 86-103.
- Combes C 2001. Parasitism. The Ecology and Evolution of Intimate Interactions. University of Chicago Press: xiii + 728 p.
- Corine 2020. Classification des habitats Corine biotopes. Inventaire National du Patrimoine Naturel. [https://inpn.mnhn.fr/habitat/cd\\_tpto/22?lg=en](https://inpn.mnhn.fr/habitat/cd_tpto/22?lg=en), accessed January 11, 2020.
- Cossu A, Ragazzola F, Demelas S 2006. Distribution and ecological conditions of *Posidonia oceanica* (L.) Delile meadows in La Maddalena National Park (Sardinia). *Biol Mar Medit* 13(4): 194-198.
- Costanza R, D'Arge R, De Groot R, Farber S, Grasso M, Hannon B, Limburg K, Naeem S, O'Neill RV, Paruelo J, Raskin RG, Sutton P, Van Der Belt M 1997. The value of the world's ecosystem services and natural capital. *Nature* 387: 253-260.
- Costanza R, De Groot R, Sutton P, Van Der Ploeg S, Anderson SJ, Kubiszewski I, Farber S, Turner RK 2014. Changes in the global value of ecosystem services. *Global Environ Change* 26: 152-158.
- Cottalorda JM, Barcelo A, Barral M, Bergère H, Formentin JY, Pironneau É, Houard T 2011. Résultats de la campagne d'octobre 2010 de recherche et d'éradication de la Chlorobionte envahissante *Caulerpa taxifolia* (Valh) C. Agardh dans les eaux du Parc national de Port-Cros. *Sci Rep Port-Cros Natl Park* 25: 199-202.
- Cottalorda JM, Houard T, Barcelo A, Barral M, Bergère H, Formentin JY, Pironneau É 2012. Résultats de la campagne d'octobre 2011 de recherche et d'éradication de la Chlorobionte envahissante *Caulerpa taxifolia* (Valh) C. Agardh dans les eaux du Parc national de Port-Cros. *Sci Rep Port-Cros Natl Park* 26: 247-250.
- Courbin N, Grémillet D, Besnard A 2018. Étude de la dynamique des populations de puffins de Scopoli et yelkouan du Parc National des Calanques et du Parc National de Port-Cros. Centre d'Écologie Fonctionnelle et Évolutive (CEFE), Montpellier: 65 + xlii p.
- Cresson P, Fabri MC, Bouchoucha M, Brach Papa C, Chavanon F, Jadaud A, Knoery J, Miralles F, Cossa D 2014. Mercury in organisms from the Northwestern Mediterranean slope: importance of food sources. *Sci Total Environ* 497-498: 229-238.
- Cury P, Shannon L 2004. Regime shifts in upwelling ecosystems: observed changes and possible mechanisms in the northern and southern Benguela. *Prog Oceanogr* 60: 223-243.
- De Gaulejac B, Vicente N 1990. Écologie de *Pinna nobilis* (L.) mollusque bivalve sur les côtes de Corse. Essais de transplantation et expériences en milieu contrôlé. *Haliotis* 20: 83-100.
- De la Blanchère H 1878. Les Oiseaux utiles et les Oiseaux nuisibles aux champs – jardins – forêts – plantations – vignes, etc. J. Rothschild, Paris: 387 p.
- De La Huz R, Lastra M, Junoy J, Castellanos C, Viéitez JM 2005. Biological impacts of oil pollution and cleaning in the intertidal zone of exposed sandy beaches: preliminary study of the 'Prestige' oil spill. *Estuar Coast Shelf Sci* 65: 19-29.
- Delaugerre MJ, Sacchi R, Biaggini M, Lo Cascio P, Ouni R, Corti C 2019. Coping with aliens: how a native gecko manages to persist on Mediterranean islands despite the black rat? *Acta Herpetol* 14(2): 89-100.
- Deldrève V, Michel C 2019. La démarche de capacité de charge sur Porquerolles (Provence, Parc national de Port-Cros, France) : de la prospective au plan d'action. *Sci Rep Port-Cros Natl Park* 33: 63-100.
- Doak DF, Estes JA, Halpern BS, Jacob U, Lindberg DR, Lovvorn J, Monson DH, Tinker MT, Williams TM, Carroll I, Emmerson M, Micheli F, Novak M 2008. Understanding and predicting ecological dynamics: are major surprises inevitable? *Ecology* 89(4): 952-961.
- Dubois S, Fenwick N Ryan EA, Baker L, Baker SE, Beausoleil NJ, Carter S, Cartwright B, Costa F, Draper C, Griffin J, Grogan A, Howald G, Jones B, Littin KE, Lombard AT, Mellor DJ, Ramp D, Schuppli CA, Fraser D 2017. International consensus for ethical wildlife control. *Conserv Biol* 30(4): 753-760.
- Duguet R, Priol P, Deso G, Geoffroy D 2019. Mise à jour des connaissances sur le discoglosse sarde *Discoglossus sardus* Tschudi in Orth, 1837 dans l'île de Port-Cros en 2018: habitats potentiels, état de la population et mesures de gestion. *Sci Rep Port-Cros Natl Park* 33: 101-126.
- Espinosa F, Ozawa T 2006. Population genetics of the endangered limpet *Patella ferruginea* (Gastropoda: Patellidae): taxonomic, conservation and evolutionary considerations. *J Zool Syst Evol Res* 44(1): 8-16.
- Esposito G, Moreau S, Formentin JY, Barcelo A, Houard T, Gillet P 2012. Résultats de la campagne de septembre 2011 de recherche et d'éradication de *Caulerpa taxifolia* (Valh) C. Agardh dans les eaux de l'île de Porquerolles. *Sci Rep Port-Cros Natl Park* 26: 251-253.
- Faget D 2007. Cultiver la mer : biodiversité marine et développement de l'ostréiculture dans le midi méditerranéen français au XIX<sup>e</sup> siècle. *Ann Midi* 119(258): 207-226.
- Faget D 2016. Dauphins. In Dictionnaire de la Méditerranée. Actes Sud, Arles: 330-334.
- Farsac L, Boudouresque CF, Barcelo A, Besnard A 2013. La recherche scientifique au sein des espaces protégés : le cas du Parc national de Port-Cros (Provence, Méditerranée française). *Sci Rep Port-Cros Natl Park* 27: 137-169.
- Ferretti F, Myers RA, Serena F, Lotze HK 2008. Loss of large predatory sharks from the Mediterranean Sea. *Conserv Biol* 22(4): 952-964.
- Flaquer C, Puig-Montserrat X, Burgas A, Russo D 2008. Habitat selection by Geoffroy's bats (*Myotis emarginatus*) in a rural Mediterranean landscape: implications for conservation. *Acta Chiropterol* 10(1): 61-67.
- Francour P, Poulain M, Bernard G, Bonhomme P, Charbonnel E 1997. Impact des mouillages forains sur l'herbier à *Posidonia oceanica* dans le Parc national de Port-Cros (Méditerranée nord-occidentale). Contrat Parc National de Port-Cros – GIS Posidonie. GIS Posidonie, Marseille: 51 p.

- Fritz U, Auer M, Bertolero A, Cheylan M, Fattizzo T, Hundsdorfer AK, Martín Sampayo M, Pretus JL, Šlroky P, Wink M 2006. A rangewide phylogeography of Hermann's tortoise, *Testudo hermanni* (Reptilia: Testudines: Testudinidae): implications for taxonomy. *Zool Scripta* 35(5): 531-543.
- Galil BS 2008. Alien species in the Mediterranean Sea – which, when, where, why? *Hydrobiologia* 606: 105-116.
- Gannier A 1995. Les Cétacés de Méditerranée nord-occidentale: estimation de leur abondance et mise en relation de la variation saisonnière de leur distribution avec l'écologie du milieu. Doctoral thesis, École Pratique des Hautes Études: 439 p.
- Ganteaume A, Bonhomme P, Bernard G, Poulain M, Boudouresque CF 2005. Impact de l'ancrage des bateaux de plaisance sur la prairie à *Posidonia oceanica* dans le Parc national de Port-Cros (Méditerranée nord-occidentale). *Sci Rep Port-Cros Natl Park* 21: 147-162.
- Gauthier P, Debussche M, Thompson JD 2010. Regional priority setting for rare species based on a method combining three criteria. *Biol Conserv* 143: 1501-1509.
- Geoffroy D, Bottau C, Fournial P, Gomez MC, Bas Y 2018. Protocole d'écoute des chiroptères avant réduction des pollutions lumineuses sur le village de Porquerolles. *Sci Rep Port-Cros Natl Park* 32: 137-153.
- Giakoumi S, Halpern BS, Michel LN, Gobert S, Sini M, Boudouresque CF, Gambi MC, Katsanevakis S, Lejeune P, Montefalcone M, Pergent G, Pergent-Martini C, Sanchez-Jerez P, Velimirov B, Vizzini S, Abadie A, Coll M, Guidetti P, Micheli F, Possingham HP 2015. Towards a framework for assessment and management of cumulative human impacts on marine food webs. *Conserv Biol* 29(4): 1228-1234.
- Goujard A, Astruch P, Bonhomme P, Boudouresque CF 2010. Cartographie du récif barrière de posidonie et des peuplements associés, importance des herbivores, de la baie de Port-Cros (Parc national, Var, France). GIS Posidonie, Marseille: 51 p.
- Guéroul M 1981. Le combat de la flûte du Roi 'La Baleine' à Port-Cros le 4 août 1710. *Trav Sci Parc Natl Port-Cros* 7: 147-175.
- Halpern BS, Lester SE, Mcleod KL 2010. Placing marine protected areas onto the ecosystem-based management seascape. *Proc Nat Acad Sci USA* 107: 18312-18317.
- Harmelin JG 2013. Le Mérou brun et le Corb: deux Grands Témoins de 50 ans de protection du milieu marin dans le Parc national de Port-Cros (France, Méditerranée). *Sci Rep Port-Cros Natl Park* 27: 263-277.
- Harmelin JG, Marinopoulos J 1993. Recensement de la population de Corbs (*Sciaena umbra* Linnaeus, 1758 : Pisces) du Parc national de Port-Cros (Méditerranée, France) par inventaires visuels. *Sci Rep Port-Cros Natl Park* 15: 265-276.
- Harmelin JG, Ruitton S 2007. La population de Corb (*Sciaena umbra*: Pisces) du Parc national de Port-Cros (France), état en 2005 et évolution depuis 1990 : un indicateur halieutique et biogéographique pertinent. *Sci Rep Port-Cros Natl Park* 22: 49-65.
- Harmelin JG, Ruitton S, GEM 2010. Statut du Mérou brun (*Epinephelus marginatus*) dans le Parc national de Port-Cros (France, Méditerranée) : état 2008 et évolution en 15 ans. *Sci Rep Port-Cros Natl Park* 24: 147-159.
- Henocque Y 2013. Enhancing social capital for sustainable coastal development: is satoumi the answer? *Estuar Coast Shelf Sci* 116(1): 66-73.
- Hogg K, Markantonatou V, Noguera-Méndez P, Semitiel-García M 2016. Incentives for good governance: getting the balance right for Port-Cros National Park (Mediterranean Sea, France). *Sci Rep Port-Cros Natl Park* 30: 165-178.
- Hogg K, Noguera-Méndez P, Semitiel-García M 2018. Lessons from three north-western Mediterranean MPAs: a governance analysis of Port-Cros National Park, Tavolara Punta-Coda Cavallo and Ustica. *Mar Policy* (in press).
- Huston MA 1979. A general hypothesis of species diversity. *Am Nat* 113: 81-101.
- Hutson T, Spitzenberger F, Aulagnier S, Nagy Z 2007. *Myotis emarginatus*. In The IUCN Red List of Threatened Species. Gland. Accessed on 26 December 2019.
- IUCN SSC Cetacean Specialist Group, 2007. Regional assessment by European Mammal Assessment team. *Tursiops truncatus*. The IUCN Red List of Threatened Species 2007: e.T22563A9374943. Accessed on 12 February 2020.
- Jaffeux H 2010. La longue et passionnante histoire des parcs nationaux français. *Pour Mémoire* 9: 138-163.
- Jahandiez E 1914. Les îles d'Hyères (2<sup>e</sup> édition). Imprimerie de l'auteur, Carqueiranne: 362 p.
- Jézéquel R, Poncet F 2011. The Erika oil spill, 10 years after: assessment of the natural weathering of the oil and natural recovery of vegetation. In International Oil Spill Conference Proceedings, March 2011 (1), abstract 165.
- Jolivet S 2018. La prévention de l'hyper fréquentation des espaces naturels par la police administrative : étude de droit positif et prospectif. *Sci Rep Port-Cros Natl Park* 32: 155-173.
- Katsanevakis S, Gatto F, Zenetos A, Cardoso AC 2013. How many marine aliens in Europe? *Manage Biol Invasions* 4(1): 37-42.
- Kincaid K, Rose G, Devillers R 2017. How fisher-influenced marine closed areas contribute to ecosystem-based management: a review and performance indicator scorecard. *Fish Fish* 18(5): 860-876.
- Knoepffler LP 1962. Contribution à l'étude du genre *Discoglossus* (Amphibiens Anoures). *Vie Milieu* 13:1-94.
- Kružić P 2002. Marine fauna of the Mljet National Park (Adriatic Sea, Croatia). 1. Anthozoa. *Nat Croat* 11(3): 265-292.
- Laborel J, Laborel-Deguen F 1991. Réintroduction de *Patella ferruginea* sur Port-Cros. Rapport intermédiaire. Contrat Parc national de Port-Cros N° 90011, Hyères: 3 p.
- Laborel-Deguen F 1988. Essai de réintroduction de *Patella ferruginea* Gmelin (Gasteropoda) dans le Parc national de Port-Cros (Var, France). *Sci Rep Port-Cros Natl Park* 14: 141-146.
- Laborel-Deguen F, Laborel J 1991a. Une tentative de réintroduction de *Patella ferruginea* Gmel. (Gasteropoda) dans le Parc National de Port-Cros (Var, France). In Boudouresque CF, Avon M, Gravez V Eds, Les Espèces marines à protéger en Méditerranée. GIS Posidonie, Marseille: 129-132.
- Laborel-Deguen F, Laborel J 1991b. Statut de *Patella ferruginea* Gmelin en Méditerranée. In Boudouresque CF, Avon M, Gravez V Eds, Les Espèces marines à protéger en Méditerranée. GIS Posidonie, Marseille: 91-103.
- Landrieu G, Gilg O 2010. Les réservoirs de la nature. In Lemoine-Danese ML Ed, Biodiversité : Paroles d'Acteurs. FRB (Fondation de la Recherche sur la Biodiversité), Paris: 69-76.
- Lascève M 2014. Premiers résultats de l'opération de limitation de la population de Tortues de Floride sur le site des Vieux Salins, Hyères (Var, France). *Sci Rep Port-Cros Natl Park* 28: 195-201.

- Le Berre S, Brigand L, Le Corre N, Peuziat I 2013. L'apport du Parc national de Port-Cros à la réflexion sur les usages récréatifs et leurs suivis dans les aires protégées : les observatoires Bouffles Port-Cros et Porquerolles. *Sci Rep Port-Cros Natl Park* 27: 325-353.
- Le Diréach L, Boudouresque CF, Bonhomme P, Cadiou G, Ourgaud M, Rouanet É 2018. Exploitation des ressources halieutiques par la pêche artisanale dans et autour des aires marines protégées : socio-écosystème, conservation et gouvernance. In Buti G, Faget D, Raveux O, Rivoal S Eds, Moissonner la Mer. Économies, Sociétés et Pratiques halieutiques méditerranéennes (XV<sup>e</sup>-XXI<sup>e</sup> siècle). Karthala, Maison méditerranéenne des sciences de l'homme, Aix-en-Provence: 351-380.
- Legrand J, Bigeard N, Vidal É 2007. Première évaluation de l'impact et définition des modalités de gestion de la population de Hérisson d'Europe *Erinaceus europaeus* introduite sur l'île de Porquerolles. Parc national de Port-Cros, Hyères: 28 p. + annexes.
- Legrand J, Bigeard N, Bonnaud E, Bourgeois K, Vidal É 2008. Impacts et modalités possibles de gestion de la population de Chats haret *Felis catus* sur l'île de Porquerolles. Parc national de Port-Cros, Hyères: 35 p.
- Le Moigne M, Laubier L 2004. The "Erika" oil spill: environmental contamination and effects in the Bay of Biscay. *Aquat Living Resour* 17: 335-236.
- Lim P, Dauba F 2001. Contrôle de l'éradication des gambusies (*Gambusia affinis*) dans la retenue de Port-Cros (Parc national de Port-Cros). École Nationale Supérieure Agronomique de Toulouse (ENSAT), Toulouse: 10 + 4 p.
- Lindberg K, McCool S, Stankey G 1997. Rethinking carrying capacity. *Ann Tourism Res* 24(2): 461-465.
- Litzow MA, Cianelli L 2007. Oscillating trophic control induces community reorganization in a marine ecosystem. *Ecol Lett* 10: 1124-1134.
- Long L 2004. Épaves et sites submergés de la région d'Hyères de la préhistoire à l'époque moderne. *Sci Rep Port-Cros Natl Park* 20: 47-96.
- LPO PACA, IMEP-CNRS, PCNP 2007. Conservation des pufins sur les îles d'Hyères. Projet LIFE 03 NAT/F/00105. Rapport final – Volet technique. 01 septembre 2003-31 août 2007. LPO PACA, Hyères-les-Palmiers: 122 p.
- Lubchenco J, Menge BA 1978. Community development and persistence in a low rocky intertidal zone. *Ecol Monogr* 48: 67-94.
- Luglia R 2014. La société d'acclimatation (1854-1939) : une origine du courant naturaliste de protection de la nature en France. *Courr Nat* 280: 40-41.
- Mammides C 2019. European Unions' conservation efforts are taxonomically biased. *Biodiv Conserv* 28(5): 1291-1296.
- Marchand M, Conan G, D'ozouville L 1979. Bilan écologique de la pollution de l'Amoco Cadiz. *Rapp. Sci. Techn. CNEXO*, Paris, 40: 1-60.
- Marchessaux D 1989a. Recherches sur la biologie, l'écologie et le statut du Phoque Moine *Monachus monachus*. GIS Posidonie, Marseille: 280 p.
- Marchessaux D 1989b. Distribution et statut des populations du Phoque moine *Monachus monachus* (Hermann, 1779). *Mammalia* 53(4): 621-642.
- Martin GJ 2020. De quelques évolutions du droit contemporain à la lumière de la réparation du préjudice écologique par le droit de la responsabilité civile. *Rev. Juristes Sci Po* 18: 71-76.
- Matagne P 1999. Aux Origines de l'Écologie. Les Naturalistes en France de 1800 à 1914. CTHS, Paris: 302 p.
- Maxwell SL, Fuller RA, Brooks TM, Watson JEM 2016. The ravages of guns, nets and bulldozers. *Nature* 536: 143-145.
- Médail F, Loisel R, Rolando C 1995. Éléments pour une gestion dynamique des populations de quatre végétaux protégés des îles d'Hyères (Var, France). *Delphinium pictum* Willd. subsp. *requienii* (D.C.) C. Blanché et Molero, *Genista linifolia* L., *Leucosium aestivum* L. subsp. *pulchellum* (Salisb.) Briq., *Teucrium marum* L. subsp. *marum*. *Sci Rep Port-Cros Natl Park* 16: 19-54.
- Médail F, Cheylan G, Ponel P, 2013. Dynamique des paysages et de la biodiversité terrestres du Parc national de Port-Cros (Var, France) : enseignements de cinquante années de gestion conservatoire. *Sci Rep Port-Cros Natl Park* 27: 171-262.
- Médard P, Muratet J 2000. Habitats de chasse du Murin à oreilles échanquées (*Myotis emarginatus*) à Porquerolles. Befene, Pépieux: 27 p.
- Médard P, Probst C, Jourde P, Bertrand A 1999. Premier diagnostic sur l'habitat d'alimentation du murin à oreilles échanquées. Île de Porquerolles. Befene publ, Pépieux: 9 p + 1 map.
- Meinesz A, Blanfuné A 2015. 1983-2013: Development of marine protected areas along the French Mediterranean coasts and perspectives for achievement of the Aichi target. *Mar Policy* 54: 10-16.
- Meinesz A, Caye G, Loquès F, Molenaar H 1993. Polymorphism and development of *Posidonia oceanica* transplanted from different parts of the Mediterranean into the National Park of Port-Cros. *Bot Mar* 36: 209-216.
- Meinesz A, Cottalorda JM, Chiaverini D, Vaugelas J de 2001. Représentation cartographique de l'abondance de quelques algues et invertébrés du littoral de l'îlot de Bagaud (Parc national de Port-Cros). *Sci Rep Port-Cros Natl Park* 18: 123-141.
- Meinesz A, Javel F, Cottalorda JM, Thibaut T, 2005. Disparition des phanérogames marines *Cymodocea nodosa* et *Nanozostera noltii* dans la lagune de l'anse de Port-Cros (Var) et transplantation expérimentale de *C. nodosa*. GIS Posidonie and LEML-UNSA, Marseille and Nice: 8 p.
- Molinier R 1960. Etude des biocénoses marines du Cap-Corse. *Vegetatio* 9: 121-312.
- Nivelle D 2017. Cartographie et structuration génétique des populations varoises de Tortue d'Hermann (*Testudo hermanni hermanni*). Dissertation Master 2 Écologie et Biologie des Populations, Université de Poitiers: 42 p.
- Noël PY 2003. Les crustacés du Parc national de Port-Cros et de la région des îles d'Hyères (Méditerranée), France. État actuel des connaissances. *Sci Rep Port-Cros Natl Park* 19: 135-306.
- Nordlund LM, Koch EW, Barbier EB, Creed JC 2016. Seagrass ecosystem services and their variability across genera and geographical regions. *PLoS ONE* 11(10): 1-23 (e0163091).
- Ourgaud M, Ruitton S, Bell J, Letourneur Y, Harmelin JG, Harmelin-Vivien M 2015. Response of a seagrass fish assemblage to improved wastewater treatment. *Mar Pollut Bull* 90: 25-32.
- Pascal M, Lorvelec O, Vigne JD 2006. Invasions biologiques et Extinctions. 11 000 ans d'Histoire des Vertébrés en France. Belin, Paris & Quae, Versailles: 350 p.
- Passeti A, Aboucaya A, Buisson É, Gauthier J, Médail F, Pascal M, Ponel P, Vidat É 2012. Restauration écologique de la Réserve intégrale de l'île de Bagaud (Parc national de Port-Cros, Var, France) et 'état zéro' des suivis scientifiques : synthèse méthodologique. *Sci Rep Port-Cros Natl Park*, 26: 149-171.

- Pavé A 2019. Comprendre la Biodiversité. Vrais Problèmes et Idées fausses. Editions du Seuil, Paris: 361 p.
- Pérès JM, Picard J 1964. Nouveau manuel de bionomie benthique de la Mer Méditerranée. *Rec. Trav Stat Mar Endoume* 31(47): 3-137.
- Perrot K, Lascève M, Gomez MC 2016. Estimation de la population et localisation des sites de ponte de la cistude d'Europe (*Emys orbicularis*) sur les Vieux Salins d'Hyères (Var, France). *Sci Rep Port-Cros Natl Park* 30: 179-194.
- Personnic S, Boudouresque CF, Astruch P, Ballesteros E, Blouet S, Bellan-Santini D, Bonhomme P, Thibault-Botha D, Feunteun E, Harmelin-Vivien M, Pergent G, Pergent-Martini C, Pastor J, Poggiale JC, Renaud F, Thibaut T, Ruitton S 2014. An ecosystem-based approach to assess the status of a Mediterranean ecosystem, the *Posidonia oceanica* seagrass meadow. *PLoS ONE* 9(6): 1-17 (e98994).
- Peterson RT, Mountfort G, Hollom PAD 1993. Field Guide of the Birds of Britain and Europe. Harper Collins, London: 534 p.
- Pironneau É, Ringwald C 2015. Résultats de la campagne d'octobre 2014 de recherche et d'éradication du Chlorobionte invasif *Caulerpa taxifolia* (Vahl) C. Agardh dans la baie de la Garonne (Le Pradet, Var, France). *Sci Rep Port-Cros Natl Park* 29: 273-275.
- Pironneau É, Ringwald C, Cottalorda JM 2014. Résultats des campagnes d'octobre 2012 et 2013 de recherche et d'éradication du Chlorobionte invasif *Caulerpa taxifolia* (Vahl) C. Agardh dans la baie de la Garonne (Le Pradet, Var, France). *Sci Rep Port-Cros Natl Park* 28: 203-207.
- Planhol X de 2004. Le Paysage animal. L'Homme et la grande Faune : une Zoogéographie historique. Fayard, Paris: 1127 p.
- Poncet F, Le Bail J 2001. Marée noire de l'Erika, un bilan de l'impact sur les espèces végétales et les habitats littoraux. *Garance Voyageuse* 54: 5-12.
- Pont B 2003. La longue démarche du gestionnaire qui décide de ne rien faire. *Espaces Nat* 4: 15-17.
- Quekenborn D, Stoecklé T, Cosson E 2004. Réhabilitation et étude préliminaire de la colonie de Murins à oreilles échan-crées (*Myotis emarginatus*) de l'île de Porquerolles. Groupe Chiroptères de Provence, Saint-Paul sur Ubaye: 31 + 6 + 5 p.
- Reveret C, De Vaugelas J, Rouanet É 2015. Transplantation et suivi de grandes Nacres préalablement aux travaux de remplacement d'une canalisation d'adduction d'eau de mer à Monaco. In Colloque Driver-Sublimo Restauration écologique des nurseries des petits fonds côtiers de Méditerranée, 27-29 avril 2015, île des Embiez, France.
- Rice JC 2005. Implementation of the Ecosystem Approach to Fishery Management – asynchronous co-evolution at the interface between science and policy. *Mar Ecol Prog Ser* 300: 265-270.
- Rincé M, Jaubert R, Moussay C, Boudouresque CF 2015. Étude pour le choix de la localisation d'une 'zone ressource', zone marine destinée à favoriser l' "effet réserve" à Porquerolles (Parc national de Port-Cros, France, Méditerranée). *Sci Rep Port-Cros Natl Park* 29: 195-208.
- Robert P 1983. Dégradation de l'herbier de posidonies dans la zone de mouillage organisé de la baie de Port-Cros. *Trav Sci Parc Natl Port-Cros* 9: 195-197.
- Robert P 2013a. Évolution de la gouvernance: l'exemple de la pêche dans les eaux du Parc national de Port-Cros. *Sci Rep Port-Cros Natl Park* 27: 319-324.
- Robert P 2013b. La recherche au service de la gestion: les moyens d'inventer. In: Le Diréach L, Boudouresque CF Eds, GIS Posidonie : plus de 30 ans au service de la protection et de la gestion du milieu marin. GIS Posidonie, Marseille: 69-73.
- Robvieux P 2013. Conservation des populations de *Cystoseira* en régions Provence-Alpes-Côte d'Azur et Corse. PhD thesis, Université de Nice Sophia Antipolis: 304 p.
- Rotini A, Chiesa S, Manfra L, Borello P, Piermarini R, Silvestri C, Cappucci S, Parlagreco L, Devoti S, Pisapia M, Creo C, Mezzetti T, Scarpato A, Mignone L 2020. Effectiveness of the 'ecological beach' model: beneficial management of *Posidonia* beach casts and *banquette*. *Water* 12(3238): 1-16.
- Rouanet E, Astruch P, Bonhomme D, Bonhomme P, Rogeau E, De Saint Martin T, Boudouresque CF 2012. Evidence of anchor effect in a *Posidonia oceanica* seagrass meadow under low anchoring pressure via a multi-criteria grid. *Rapp Comm Int Mer Médit* 40: 676.
- Ruitton S, Le Diréach L, Charbonnel É 2004. Évaluation du peuplement de poissons de l'épave 'La barge aux congrès' du Parc national de Port-Cros. *Sci Rep Port-Cros Natl Park* 20: 211-230.
- Sala E, Knowlton N 2006. Global marine biodiversity trends. *Annu Rev Environ Res* 31: 93-122.
- San Martín GA 1995. Contribution à la gestion des stocks d'oursins : étude des populations et transplantations de *Paracentrotus lividus* à Marseille (France, Méditerranée) et production de *Loxechinus albus* à Chiloe (Chili, Pacifique). Thèse Doctorat Ecologie, Univ. Aix-Marseille II: 169 + 60 p.
- Schmitz DC, Simberloff D 1997. Biological invasions: a growing threat. *Issues Sci Technol* 13(4): 33-40.
- Schnitzler A, Génot JC, Wintz M 2008. Espaces protégés : de la gestion conservatoire vers la non intervention. *Courrier Environ INRA* 56: 29-44.
- Sellier G 2015. Processus de mise en place de la charte au nouveau périmètre du Parc national de Port-Cros. In Entretiens de Port-Cros, 8, 7-9 Septembre 2015, Porquerolles, France. Fondation Total, Paris: 86-90.
- Serantoni É 2015. La gestion des dépôts marins sur les plages sur l'île de Porquerolles, située en zone cœur du Parc national de Port-Cros (Provence, France). *Sci Rep Port-Cros Natl Park* 29: 229-235.
- Stoecklé T 2003. Guide pour la conservation des Chauves-souris du bâti de Port-Cros. Groupe Chiroptères de Provence publ, Apt: 108 p.
- Svensson JR, Lindgarth M, Pavia H 2009. Equal rate of disturbance causes different patterns of biodiversity. *Ecology* 90(2): 496-505.
- Thibaut T, Pinedo S, Torras X, Ballesteros E 2005. Long-term decline of the populations of Fucales (*Cystoseira* spp. and *Sargassum* spp.) in the Albères coast (France, North-western Mediterranean). *Mar Pollut Bull* 50: 1472-1489.
- Thibaut T, Blanfuné A, Boudouresque CF, Verlaque M 2015. Decline and local extinction of Fucales in the French Riviera: the harbinger of future extinctions? *Medit Mar Sci* 16(1): 206-224.
- Thibaut T, Blanfuné A, Verlaque M, Boudouresque CF, Ruitton S 2016a. The *Sargassum conundrum*: highly rare, threatened or locally extinct in the NW Mediterranean and still lacking protection. *Hydrobiologia* 781: 25-42.

- Thibaut T, Blanfuné A, Boudouresque CF, Cottalorda JM, Hereu B, Susini ML, Verlaque M 2016b. Unexpected temporal stability of *Cystoseira* and *Sargassum* forests in Port-Cros, one of the oldest Mediterranean marine National Parks. *Cryptogamie, Algol* 37(1): 61-90.
- Thibaut T, Blanfuné A, Boudouresque CF, Personnic S, Ruitton S, Ballesteros E, Bellan-Santini D, Bianchi CN Bussotti S, Cebrian E, Cheminée A, Culioli JM, Derrien-Courtel S, Guidetti P, Harmelin-Vivien M, Hereu B, Morri C, Poggiale JC, Verlaque M 2017. An ecosystem-based approach to assess the status of Mediterranean algae-dominated shallow rocky reefs. *Mar Pollut Bull* 117: 311-329.
- Thibot AS, Carabeux Q, Deter J, Claverie T, Villéger S, Mouquet N 2018. Confronting species aesthetics with ecological functions in coral reef fish. *Sci Rep* 8(11733): 1-7.
- Thompson JD, Mathevet R, Delanoë O, Gil-Fourrier C, Bonnin M, Cheylan M 2011. Ecological solidarity as a conceptual tool for rethinking ecological and social interdependence in conservation policy for protected areas and their surrounding landscape. *C R Biol* 334: 412-419.
- Tranchant Y, Vidal É 2003. Régime alimentaire et distribution du Chat haret *Felis catus* sur l'île de Port-Cros (Var, France). *Sci Rep Port-Cros Natl Park* 19: 71-85.
- Tranchant Y, Vidal É, Bourgeois K 2002. Étude écologique des populations de prédateurs introduits sur les îles d'Hyères. Institut Méditerranéen d'Écologie et de Paléoécologie (IMEP), Marseille: 62 p.
- Tudela S, Short K 2005. Paradigm shifts, gaps, inertia, and political agendas in ecosystem-based fisheries management. *Mar Ecol Prog Ser* 300: 281-286.
- Valdivia N, Heidemann A, Thiel M, Molis M, Wahl M 2005. Effects of disturbance on the diversity of hard-bottom macrobenthic communities on the coast of Chile. *Mar Ecol Prog Ser* 299: 45-54.
- Van der Yeught C 2018. Contribution des entreprises touristiques à la maîtrise de la capacité de charge de Porquerolles et au 'caractère' du Parc national de Port-Cros (Provence, France). *Sci Rep Port-Cros Natl Park* 32: 185-211.
- Vázquez-Luis M, Álvarez E, Barrajon A, García-March JR, Grau A, Hendriks IE, Jiménez S, Kersting D, Moreno D, Pérez M, Ruiz JM, Sánchez J, Villalba A, Deudero S 2017. S.O.S. *Pinna nobilis*: a mass mortality event in western Mediterranean Sea. *Front Mar Sci* 4(220): 1-6.
- Verlaque M, Boudouresque CF, Perret-Boudouresque M 2019. Mediterranean seaweeds listed as threatened under the Barcelona Convention: a critical analysis. *Sci Rep Port-Cros Natl Park* 33: 179-214.
- Wagar JA 1964. The carrying capacity of wild lands for recreation. *Forest Sci Monogr* 7: 1-24.
- Wagar JA 1974. Recreational carrying capacity reconsidered. *J Forest* 75(5): 274-278.
- Yanagi T 2013. Japanese Commons in the Coastal Sea. How the Satoumi Concept Harmonizes Human Activity in Coastal Seas with High Productivity and Diversity. Springer, Tokyo, x + 113 p.
- Zarzos Lacoste D, Bonnaud E, Bourgeois K, Ruffino L, Legrand J, Vidal E 2009. Suivi et évaluation des effets du contrôle des populations de Chats sur les différents compartiments écosystémiques de l'île de Port-Cros. Parc National de Port-Cros, Hyères: 24 p.