



HAL
open science

Comparative efficacy and acceptability of psychotherapies for post-traumatic stress disorder in children and adolescents: a systematic review and network meta-analysis

Yajie Xiang, Andrea Cipriani, Teng Teng, Cinzia del Giovane, Yuqing Zhang, John R Weisz, Xuemei Li, Pim Cuijpers, Xueer Liu, Jürgen Barth, et al.

► To cite this version:

Yajie Xiang, Andrea Cipriani, Teng Teng, Cinzia del Giovane, Yuqing Zhang, et al.. Comparative efficacy and acceptability of psychotherapies for post-traumatic stress disorder in children and adolescents: a systematic review and network meta-analysis. Evidence-Based Mental Health, 2021, pp.ebmental-2021-300346. 10.1136/ebmental-2021-300346 . hal-03371511

HAL Id: hal-03371511

<https://hal.sorbonne-universite.fr/hal-03371511>

Submitted on 8 Oct 2021

HAL is a multi-disciplinary open access archive for the deposit and dissemination of scientific research documents, whether they are published or not. The documents may come from teaching and research institutions in France or abroad, or from public or private research centers.

L'archive ouverte pluridisciplinaire **HAL**, est destinée au dépôt et à la diffusion de documents scientifiques de niveau recherche, publiés ou non, émanant des établissements d'enseignement et de recherche français ou étrangers, des laboratoires publics ou privés.



ORIGINAL RESEARCH

Comparative efficacy and acceptability of psychotherapies for post-traumatic stress disorder in children and adolescents: a systematic review and network meta-analysis

Yajie Xiang,^{1,2,3} Andrea Cipriani ,^{4,5} Teng Teng,^{2,3,6} Cinzia Del Giovane,⁷ Yuqing Zhang,⁸ John R. Weisz,⁹ Xuemei Li,^{1,2,3} Pim Cuijpers ,¹⁰ Xueer Liu,^{2,3,6} Jürgen Barth,¹¹ Yuanliang Jiang,^{1,2,3} David Cohen,¹² Li Fan,^{2,3,6} Donna Gillies,¹³ Kang Du,^{1,2,3} Arun V. Ravindran,^{14,15} Xinyu Zhou,^{1,2,3} Peng Xie .^{2,3,6}

► Additional supplemental material is published online only. To view, please visit the journal online (<http://dx.doi.org/10.1136/ebmental-2021-300346>).

For numbered affiliations see end of article.

Correspondence to

Professor Peng Xie, Department of Neurology, The First Affiliated Hospital of Chongqing Medical University, Chongqing, 400016, China; xiepeng@cqmu.edu.cn and Professor Xinyu Zhou, Department of Psychiatry, The First Affiliated Hospital of Chongqing Medical University, Chongqing, 40016, China; zhouxinyu@cqmu.edu.cn

Received 16 September 2021
Accepted 20 September 2021



© Author(s) (or their employer(s)) 2021. Re-use permitted under CC BY-NC. No commercial re-use. See rights and permissions. Published by BMJ.

To cite: Xiang Y, Cipriani A, Teng T, et al. *Evid Based Ment Health* Epub ahead of print: [please include Day Month Year]. doi:10.1136/ebmental-2021-300346

ABSTRACT

Background Available evidence on the comparative efficacy and acceptability of psychotherapies for post-traumatic stress disorder (PTSD) in children and adolescents remains uncertain.

Objective We aimed to compare and rank the different types and formats of psychotherapies for PTSD in children and adolescents.

Methods We searched eight databases and other international registers up to 31 December 2020. The pairwise meta-analyses and frequentist network meta-analyses estimated pooled standardised mean differences (SMDs) and ORs with random-effects model. Efficacy at post-treatment and follow-up, acceptability, depressive and anxiety symptoms were measured.

Findings We included 56 randomised controlled trials with 5327 patients comparing 14 different types of psychotherapies and 3 control conditions. For efficacy, cognitive processing therapy (CPT), behavioural therapy (BT), individual trauma-focused cognitive-behavioural therapy (TF-CBT), eye movement desensitisation and reprocessing, and group TF-CBT were significantly superior to all control conditions at post-treatment and follow-up (SMDs between -2.42 and -0.25). Moreover, CPT, BT and individual TF-CBT were more effective than supportive therapy (SMDs between -1.92 and -0.49). Results for depressive and anxiety symptoms were similar to the findings for the primary outcome. Most of the results were rated as 'moderate' to 'very low' in terms of confidence of evidence.

Conclusions CPT, BT and individual TF-CBT appear to be the best choices of psychotherapy for PTSD in young patients. Other types and different ways of delivering psychological treatment can be alternative options. Clinicians should consider the importance of each outcome and the patients' preferences in real clinical practice.

BACKGROUND

Post-traumatic stress disorder (PTSD) is a common and severe psychological disorder in children and adolescents.¹ About 30%–60% of young people who have experienced traumatic events can develop PTSD.² Types of traumatic events that may cause PTSD in children and adolescents mainly include

physical or sexual abuse, war or terrorism, natural or man-made disasters, catastrophic illnesses and accidents.³ Additionally, prolonged, repeated experience of trauma in a context in which the individual has little or no chance of escape may cause complex PTSD.⁴ Compared with adults, children and adolescents with PTSD reported higher levels of anxiety and depression, and lower levels of optimal functioning in different settings (eg, at home and school).⁵ Moreover, untreated PTSD is a key determinant for poor health outcomes, such as elevated risk of psychiatric disorders or suicidality, highlighting the importance of identifying and addressing psychological needs of traumatised minors.⁶

Currently, psychotherapies are recommended as the first-line treatment of PTSD in children and adolescents according to several international guidelines, and various forms of psychotherapies such as trauma-focused cognitive-behavioural therapy (TF-CBT) and eye movement desensitisation and reprocessing (EMDR) are commonly used.^{7–8} Previous pairwise meta-analyses found evidence to support the effectiveness of psychotherapies in reducing PTSD, anxiety and depression symptoms.^{9–10} However, these studies were inconclusive because they were not able to generate clear hierarchies among available interventions, due to many psychotherapies that have not been directly compared. Moreover, the debate regarding whether the inclusion of a trauma-focused component (eg, exposure to traumatic memories) is essential in CBT¹¹ and whether the effectiveness of psychotherapy delivered individually or in group format is different for children and adolescents with PTSD is still ongoing.¹² These issues make decision-making uncertain for healthcare professionals and patients.^{13–14}

Objective

In this study, we aimed to synthesise, compare and rank all the available evidence on commonly used psychotherapies for the treatment of PTSD in children and adolescents.

METHODS

Search strategy and selection criteria

We performed a comprehensive literature search for published and unpublished randomised controlled trials (RCTs) in PubMed, Cochrane Central Register of Controlled Trials, Embase, Web of Science, PsycINFO, CINAHL, PILOTS, ProQuest Dissertations, international trial registers from inception until 31 December 2020 (online supplemental appendix 1). Eligible trials included comparisons of any manualised or structured psychotherapy with another psychotherapy or any control condition for the treatment of children and adolescents (≤ 18 years old) with a primary diagnosis of PTSD, as follows: (1) full PTSD, as diagnosed according to standardised diagnostic interviews, such as the Diagnostic and Statistical Manual of Mental Disorders (DSM) or International Classification of Diseases (ICD); (2) subclinical PTSD, patients who have experienced psychological trauma and report some subsequent PTSD symptoms in at least one of the four symptom clusters according to DSM-5 (re-experiencing, avoidance, hyperarousal, negative alterations in cognition and mood)¹⁵; (3) clinically significant post-traumatic stress symptoms (PTSS), defined as scoring above a validated cut-off on a rating scale.¹⁶ Trials involving patients with comorbid psychiatric disorders, such as depressive disorder or anxiety disorder, were included. Trials involving patients with acute stress disorder or adjustment disorder, combination therapies and an overall sample size of less than 10 patients were excluded. We contacted the authors to supplement incomplete reports of the original papers or provide data for unpublished studies. No restriction was applied for language. Different types and delivery formats of psychotherapies may have different effects, thus we decided a priori to consider them as independent nodes in the network meta-analysis, as applicable.¹⁷ The control conditions included no treatment (NT), treatment as usual (TAU) and waitlist (WL) (for detailed descriptions of these psychotherapies and psychological control conditions, see online supplemental appendix 2). During psychotherapies, the patients and the therapists cannot be blinded to treatment allocation.¹⁸ As a consequence, we included only trials in which patients assessed symptoms by self-rating scales as well as trials in which observer/raters were blinded.

Two researchers (YX and YZ) independently screened eligible trials, extracted the relevant information and assessed risk of bias with the Cochrane Collaboration's risk of bias V.2.0 tool.¹⁹ We resolved any discrepancies by consensus and arbitration by a panel of other investigators within the review team (XZ and PX). We also assessed the confidence of evidence contributing to each network estimate using the Confidence In Network Meta-Analysis (CINeMA) software (<https://cinema.ispm.unibe.ch/>).²⁰

Outcomes

The primary outcomes were efficacy (the endpoint score from PTSD symptom scales) at post-treatment and follow-up (up to 12 months) and acceptability (all-cause discontinuation measured by the proportion of patients who withdrew from the study for any reason at post-treatment). Secondary outcomes were depressive symptoms (the endpoint score on depressive symptom scales) and anxiety symptoms (the endpoint score on anxiety symptom scales). Where PTSD symptoms were measured in a trial using more than one scale, we followed the hierarchy based on psychometric properties and appropriateness for use with children and adolescents, as published in our protocol.¹⁷ We preferred self-rated outcome over the parent-rated or clinician-rated outcome,

because the effect sizes have been shown to be more conservative in the self-rated outcomes.²¹

Data analysis

We first performed a series of pairwise meta-analysis of direct evidence and then a network meta-analysis combining direct and indirect evidence in a random-effects frequentist hierarchical model. Details of the applied statistical approaches are provided in online supplemental appendix 3. We used standardised mean differences (SMDs, Cohen's *d*) to summarise data of continuous outcomes and ORs for dichotomous outcomes, with 95% CIs, respectively.²² WL was used as the reference control condition in all forest plots.²³

To assess transitivity, we compared the distribution of clinical and methodological variables across treatment comparisons. Those variables included publication year, mean age, the percentage of female patients, sample size and number of treatment session. We used the magnitude of the heterogeneity variance parameter (τ^2 and total I^2 statistic) to assess the entire network heterogeneity across the various treatment comparisons. Incoherence between direct and indirect sources of evidence was assessed using a global (design-by-treatment inconsistency model) and a local (by calculation of the difference between direct and indirect estimates in all closed loops in the network) method.²⁴ We also used the node-splitting method to separate evidence on a particular comparison into direct and indirect evidence to calculate the incoherence of the model.²⁵ We used P-scores to rank interventions on the basis of the degree of efficacy or acceptability, which is based on a frequentist analogue of 'Surface under the Cumulative Ranking Curve'.²⁶ To determine whether the results were affected by study characteristics, we did a meta-regression for each outcome according to the following variables: publication year, mean age, the percentage of female patients, sample size, number of treatment sessions, treatment duration, follow-up duration, mean baseline severity of PTSD, risk of bias, trauma types, diagnosis criteria, source of outcome measure and psychiatric comorbidities.²⁷ Additionally, we carried out prespecified sensitivity analyses for each outcome by omitting trials with unpublished data assessment and trials with high risk of bias. We also plotted a comparison-adjusted funnel plot and used Egger's test to detect the presence of any dominant publication bias.²⁸ The protocol has been registered with PROSPERO (CRD42016051786) and subsequently published.¹⁷ The minor changes to the original protocol are listed in the online supplemental appendix 4.

Findings

We identified 9073 citations, retrieved the full text of 404 potentially eligible articles and included 56 RCTs (5327 patients) published between 1996 and 2020 (figure 1). We retrieved unpublished information for four (7.1%) studies, and identified two (3.6%) completely unpublished trials. Overall, 14 structured psychotherapies, including group TF-CBT, individual TF-CBT, group non-TF-CBT, individual non-TF-CBT, parent-only TF-CBT, EMDR, BT, cognitive processing therapy (CPT), cognitive therapy (CT), psychodynamic therapy (DYN), play therapy (PT), stress management (SM), family therapy (FT), supportive therapy (ST) and three control conditions (WL, NT, TAU) were analysed in this study.

The characteristics of included trials are summarised in online supplemental appendices 4 and 5. The mean study sample size was 95 (range, 16–640). The mean age was 12.0 years (range, 3–18). Nineteen (33.9%) trials enrolled only children (≤ 12); 16

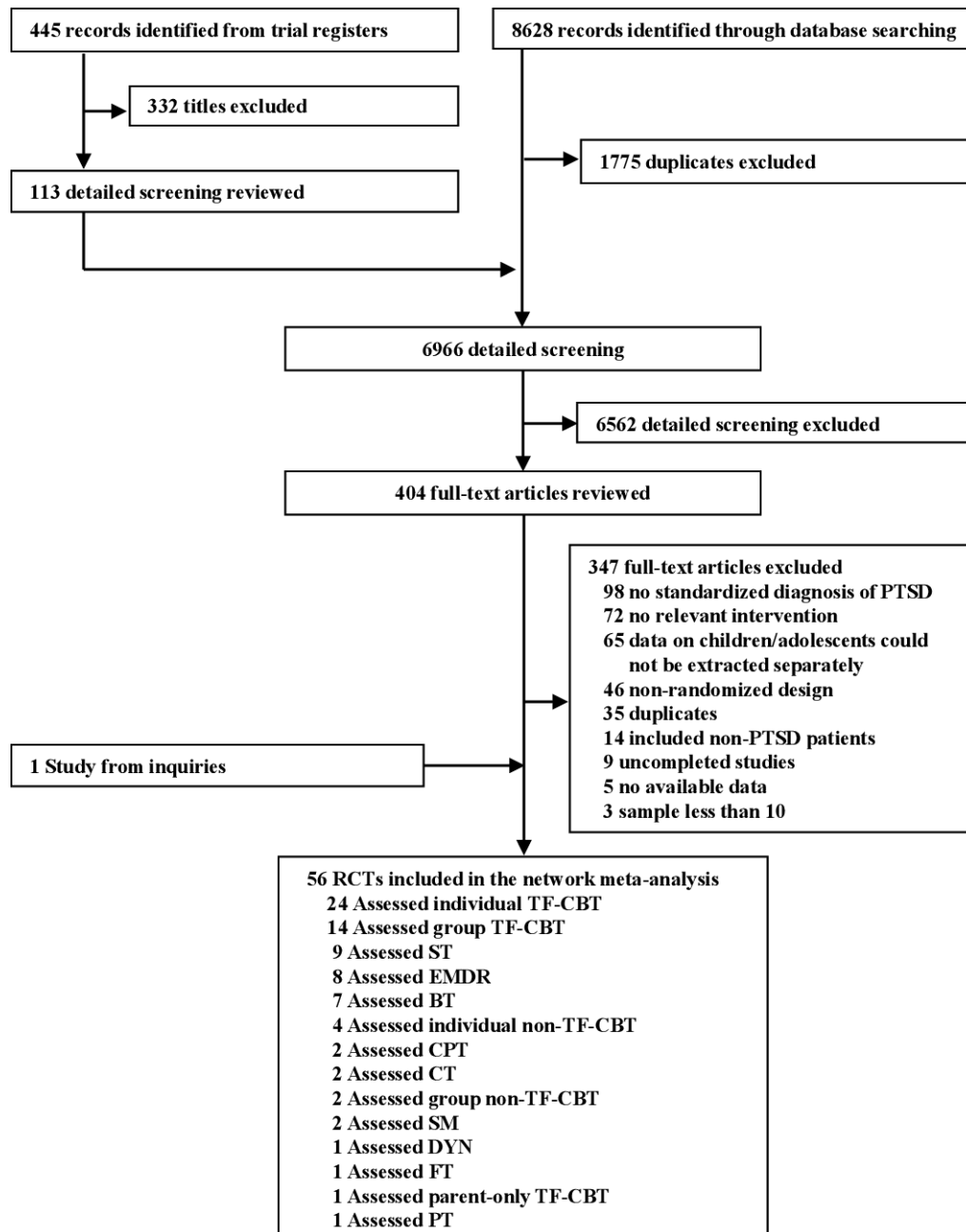


Figure 1 Flow chart of study selection. Some studies assessed more than one type of psychotherapy. BT, behavioural therapy; CPT, cognitive processing therapy; CT, cognitive therapy; DYN, psychodynamic therapy; EMDR, eye movement desensitisation and reprocessing; FT, family therapy; PT, play therapy; PTSD, post-traumatic stress disorder; RCT, randomised controlled trial; SM, stress management; ST, supportive therapy; TF-CBT, trauma-focused cognitive-behavioural therapy.

(28.6%) trials enrolled only adolescents (≥ 13 and ≤ 18); and the remaining studies enrolled both children and adolescents. More than half (56.7%) of the patients were female. Overall, 3629 (68.1%) of 5327 patients had moderate to severe PTSD, with a mean transformed baseline severity score on the Child Post-traumatic Symptom Scale of 26.1 (SD 4.5). The median duration of the treatment was 10 weeks (IQR, 7–12) and the median follow-up assessment was 6 months (IQR, 3–12) after the end of treatment. The median number of sessions was 10 (IQR, 7–12). Twenty-two (39.3%) studies were carried out in North America, 14 (25.0%) in Europe, 12 (21.4%) in Asia, 4 (7.1%) in Australia and 4 (7.1%) in Africa. Twenty-six (46.4%) studies recruited single traumatised patients, and 30 (53.6%) recruited multiple

traumatised patients. Seventeen (30.3%) studies included patients with full PTSD, 6 (10.7%) with subclinical PTSD, 21 (37.5%) with PTSS and the remaining of 12 (21.4%) with mixed levels of PTSD.

In terms of study quality, 13 (23.2%) trials were rated as high risk of bias, 26 (46.4%) trials as some concerns, 16 (28.6%) as low and 1 (1.8%) unpublished trial was impossible to assess (online supplemental appendix 6). [figure 2](#) shows the network of eligible comparisons for efficacy at post-treatment. All psychotherapies, except for DYN, PT and SM, had at least one controlled trial, and 12 psychotherapies were directly compared with another active psychotherapy. Networks for other outcomes are displayed in online supplemental appendix 7.

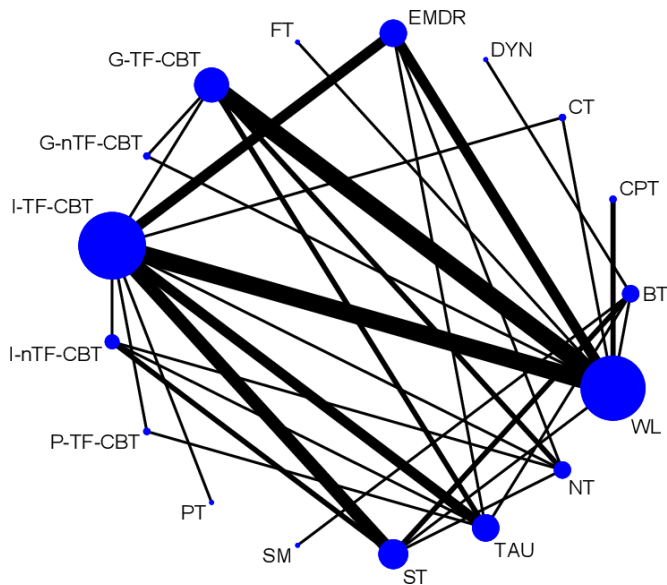


Figure 2 Network of eligible comparisons for efficacy at post-treatment. The width of the lines is proportional to the number of trials comparing every pair of treatments, and the size of every node is proportional to the number of randomised patients. BT, behavioural therapy; CPT, cognitive processing therapy; CT, cognitive therapy; DYN, psychodynamic therapy; EMDR, eye movement desensitisation and reprocessing; FT, family therapy; G-nTF-CBT, group non-trauma-focused cognitive-behavioural therapy; G-TF-CBT, group trauma-focused cognitive-behavioural therapy; I-nTF-CBT, individual non-trauma-focused cognitive-behavioural therapy; I-TF-CBT, individual trauma-focused cognitive-behavioural therapy; NT, no treatment; PT, play therapy; P-TF-CBT, parent-only trauma-focused cognitive-behavioural therapy; SM, stress management; ST, supportive therapy; TAU, treatment as usual; WL, waitlist.

Pairwise meta-analyses

For efficacy at post-treatment, CPT, CT, group non-TF-CBT, individual TF-CBT, ST, EMDR and group TF-CBT were more efficacious than WL. For efficacy at follow-up, CPT, BT, individual TF-CBT and group TF-CBT were more efficacious than WL. For acceptability, EMDR, individual TF-CBT and FT were associated with more dropouts than one of the control conditions; ST was more acceptable than WL. Detailed results of the other pairwise meta-analyses are shown in online supplemental appendix 8.

Network meta-analysis

In terms of efficacy at post-treatment (54 RCTs, 4625 patients), CPT, CT, BT, group non-TF-CBT, individual TF-CBT and EMDR were significantly more effective than all control conditions (SMD range, -1.40 to -0.46). In addition, CPT, BT and individual TF-CBT were significantly more beneficial than ST (SMD range, -1.08 to -0.58, figures 3 and 4A). For efficacy at follow-up (31 RCTs, 2791 patients), CPT, BT, SM, individual TF-CBT and EMDR were more effective than all control conditions and ST (SMD range, -2.42 to -0.41), and group TF-CBT more than control conditions (SMD range, -0.82 to -0.25). Moreover, CPT, BT and SM were superior to group non-TF-CBT, individual TF-CBT and group TF-CBT (SMD range, -1.63 to -0.69, figures 3 and 4B). In terms of acceptability (50 RCTs, 4640 patients), FT was linked to more dropouts than most of psychotherapies and all control conditions (OR range, 0.02-0.16, figures 4C and 5). On the contrary, no treatment

condition had fewer dropouts than most of psychotherapies, as well as TAU and WL (OR range, 0.02-0.18). Results for secondary outcomes of depressive symptoms and anxiety symptoms were not materially different from, and lent support to the findings for primary outcomes (online supplemental appendices 9 and 10).

Heterogeneity, transitivity, inconsistency and meta-regression analyses

The global I² values were 74.6% for efficacy at post-treatment, 33.6% for efficacy at follow-up and 24.8% for acceptability (online supplemental appendix 11). The test of global inconsistency did not show a significant difference between the consistency and inconsistency models for efficacy at post-treatment (p=0.938), efficacy at follow-up (p=0.906) and acceptability (p=0.616, online supplemental appendix 11). Tests of local inconsistency showed small percentages of inconsistent loops for primary outcomes within the empirically expected range (4 of 28 loops for the efficacy at post-treatment, 0 of 6 for efficacy at follow-up and 0 of 28 for acceptability). The test of inconsistency from the node-splitting model showed significant differences between some comparisons in efficacy at post-treatment (1 of 27), efficacy at follow-up (0 of 17) and acceptability (1 of 27). The assessment of transitivity showed some of the comparisons had variable publication year, mean age, percentage of women, sample size and number of treatment sessions, for instance, one comparison involving individual TF-CBT versus ST had relatively large sample size with 229 (online supplemental appendix 12). Egger’s tests for the comparison-adjusted funnel plot did not suggest potential publication bias or small-study effect for efficacy at post-treatment (p=0.054), efficacy at follow-up (p=0.749) or acceptability (p=0.449) (online supplemental appendix 13).

Network meta-regression analyses showed most modifiers (online supplemental appendix 14) did not significantly affect the efficacy and acceptability of interventions; however, we found that studies with higher risk of bias were associated with smaller treatment effects at follow-up. The sensitivity analyses did not substantially change the relative treatment effects (online supplemental appendix 14). The online supplemental appendix 15 presents the ranking of treatments based on the P-scores, which rank psychotherapies and control conditions on a continuous 0-1 scale. The contribution plot (online dataset available at <http://dx.doi.org/10.17632/278y88n8r7.1>) shows the percentage of contributions of each outcome from the direct comparisons for the mixed and indirect estimates. According to CINeMA evaluation, for efficacy at post-treatment, 2.2% of all comparisons were rated as moderate confidence of evidence, 7.4% as low and 90.4% as very low. For efficacy at follow-up, 3.3% of all comparisons were rated as high confidence of evidence, 25.3% as moderate, 16.5% as low and 54.9% as very low. In terms of the acceptability, 11.7% were rated as moderate confidence of evidence, 2.5% as low and 85.8% as very low (online supplemental appendix 16).

DISCUSSION

To our knowledge, this is the most comprehensive network meta-analysis assessing psychotherapy for PTSD in children and adolescents. It is based on 56 trials including 5327 patients randomly assigned to 14 different structured psychotherapies and 3 control conditions. We extended and improved a previous study²⁹ by searching additional unpublished databases and several international trial registers, by investigating three

CPT	-1.37 (-2.61 to -0.13)	-0.75 (-1.83 to 0.33)	NA	-1.63 (-2.65 to -0.60)	-0.68 (-1.87 to 0.51)	-1.44 (-2.42 to -0.46)	-1.32 (-2.38 to -0.26)	NA	-1.52 (-2.69 to -0.36)	-1.28 (-2.58 to 0.02)	-1.60 (-2.56 to -0.64)	NA	-1.92 (-2.95 to -0.90)	-2.11 (-3.13 to -1.09)	-1.85 (-2.79 to -0.91)	-1.42 (-2.61 to -0.24)		
-0.28 (-1.40 to 0.85)	CT	-0.29 (-0.62 to 1.53)	NA	-0.26 (-1.16 to 0.65)	0.09 (-0.36 to 1.73)	-0.07 (-0.83 to 0.69)	0.05 (-0.84 to 0.94)	NA	-0.15 (-1.18 to 0.88)	0.09 (-1.07 to 1.26)	-0.23 (-1.05 to 0.58)	NA	-0.55 (-1.38 to 0.27)	-0.74 (-1.62 to 0.14)	-0.48 (-1.29 to 0.33)	-1.05 (-2.10 to -0.01)		
-0.34 (-1.31 to 0.64)	-0.06 (-1.03 to 0.91)	BT	NA	-0.87 (-1.53 to -0.21)	0.07 (-0.44 to 0.58)	-0.69 (-1.19 to -0.19)	-0.57 (-1.23 to 0.09)	NA	-0.77 (-1.57 to 0.02)	-0.53 (-1.25 to 0.20)	-0.85 (-1.38 to -0.32)	NA	-1.17 (-1.60 to -0.75)	-1.36 (-1.98 to -0.73)	-1.10 (-1.62 to -0.58)	-1.67 (-2.48 to -0.86)		
-0.25 (-1.68 to 1.11)	0.01 (-1.35 to 1.36)	0.05 (-1.21 to 1.30)	PT	NA	NA	NA	NA	NA	NA	NA	NA	NA	NA	NA	NA	NA		
-0.42 (-1.42 to 0.66)	-0.10 (-1.15 to 0.94)	-0.04 (-0.93 to 0.84)	-0.04 (-1.43 to 1.24)	G-nTF-CBT (0.11 to 1.77)	0.94 (-0.30 to 0.08)	0.19 (-0.33 to 0.94)	0.31 (-0.40 to 1.33)	NA	0.10 (-0.69 to 0.89)	0.35 (-0.63 to 1.33)	0.02 (-0.40 to 0.44)	NA	-0.30 (-0.86 to 0.26)	-0.48 (-1.03 to 0.06)	-0.23 (-0.64 to 0.19)	-0.80 (-1.61 to 0.02)		
-0.35 (-1.80 to 1.10)	-0.01 (-1.52 to 1.37)	-0.01 (-1.09 to 1.06)	-0.06 (-1.71 to 1.59)	0.03 (-1.36 to 1.42)	SM (-1.47 to -0.04)	-0.12 (-1.42 to 0.20)	NA	-0.84 (-1.78 to 0.11)	-0.59 (-1.48 to 0.30)	-0.92 (-1.66 to -0.18)	NA	-1.24 (-1.91 to -0.58)	-1.42 (-2.23 to -0.62)	-1.17 (-1.90 to -0.44)	-1.74 (-2.69 to -0.78)			
-0.50 (-1.33 to 0.34)	-0.22 (-1.02 to 0.58)	-0.16 (-0.73 to 0.41)	-0.21 (-1.33 to 0.91)	-0.32 (-0.84 to 0.61)	-0.41 (-1.36 to 1.07)	-0.35 (-1.61 to 0.90)	-0.20 (-0.59 to 0.18)	EMDR (-1.13 to 0.61)	-0.05 (-0.99 to 0.88)	NA	-0.08 (-0.78 to 0.61)	-0.16 (-0.72 to 1.05)	-0.46 (-1.06 to 0.13)	NA	-0.49 (-0.81 to -0.16)	-0.67 (-1.11 to -0.22)	-0.41 (-0.69 to -0.13)	-0.98 (-1.70 to -0.27)
-0.70 (-1.58 to 0.17)	-0.43 (-1.29 to 0.44)	-0.37 (-1.02 to 0.29)	-0.41 (-1.60 to 0.77)	-0.32 (-1.09 to 0.45)	-0.41 (-1.61 to 0.90)	-0.35 (-1.61 to 0.90)	-0.20 (-0.59 to 0.18)	EMDR (-1.13 to 0.61)	-0.05 (-0.99 to 0.88)	NA	-0.08 (-0.78 to 0.61)	-0.16 (-0.72 to 1.05)	-0.46 (-1.06 to 0.13)	NA	-0.61 (-1.16 to -0.06)	-0.79 (-1.39 to -0.18)	-0.53 (-1.02 to 0.05)	-1.10 (-1.94 to -0.27)
-0.76 (-1.95 to 0.44)	-0.48 (-1.65 to 0.70)	-0.42 (-1.44 to 0.60)	-0.47 (-1.88 to 0.95)	-0.38 (-1.49 to 0.74)	-0.41 (-1.88 to 1.07)	-0.26 (-1.13 to 0.61)	-0.05 (-0.99 to 0.88)	P-TF-CBT (-1.13 to 0.61)	NA	NA	NA	NA	NA	NA	NA	NA	NA	NA
-0.80 (-1.77 to 0.18)	-0.52 (-1.47 to 0.43)	-0.46 (-1.19 to 0.27)	-0.51 (-1.75 to 0.73)	-0.42 (-1.30 to 0.46)	-0.45 (-1.74 to 0.85)	-0.30 (-0.84 to 0.24)	-0.04 (-0.73 to 0.54)	I-nTF-CBT (-1.05 to 0.96)	0.25 (-0.83 to 1.33)	-0.08 (-0.75 to 0.60)	NA	-0.40 (-1.10 to 0.30)	-0.58 (-1.24 to 0.08)	-0.33 (-1.01 to 0.36)	-0.90 (-1.69 to -0.11)			
-0.81 (-2.24 to 0.61)	-0.07 (-1.95 to 0.88)	-0.01 (-1.51 to 0.56)	-0.06 (-1.15 to 1.10)	-0.32 (-1.79 to 1.03)	-0.46 (-1.95 to 1.03)	-0.32 (-1.50 to 0.86)	-0.06 (-1.34 to 1.11)	-0.08 (-1.51 to 1.39)	-0.02 (-1.28 to 1.25)	DYN (-1.29 to 0.13)	-0.33 (-1.47 to 0.82)	NA	-0.65 (-1.49 to 0.20)	-0.83 (-1.79 to 0.13)	-0.57 (-1.47 to 0.32)	-1.15 (-2.24 to -0.06)		
-0.81 (-1.64 to 0.03)	-0.53 (-1.07 to 0.31)	-0.47 (-1.09 to 0.15)	-0.52 (-1.61 to 0.65)	-0.43 (-1.11 to 0.26)	-0.46 (-1.69 to 0.78)	-0.31 (-0.66 to 0.04)	-0.10 (-0.55 to 0.34)	-0.05 (-0.97 to 0.87)	-0.01 (-0.61 to 0.60)	0.01 (-1.20 to 1.21)	G-TF-CBT (-0.86 to 0.50)	NA	-0.32 (-0.86 to 0.22)	-0.50 (-1.04 to 0.07)	-0.25 (-0.43 to -0.07)	-0.82 (-1.53 to -0.11)		
-1.12 (-2.29 to 0.05)	-0.84 (-2.02 to 0.34)	-0.78 (-1.83 to 0.27)	-0.83 (-2.28 to 0.61)	-0.74 (-2.26 to 0.73)	-0.77 (-2.26 to 0.73)	-0.62 (-1.54 to 0.30)	-0.42 (-1.37 to 0.54)	-0.36 (-1.61 to 0.89)	-0.32 (-1.37 to 0.73)	-0.30 (-1.77 to 1.17)	-0.31 (-1.23 to 0.60)	FT (-1.23 to 0.60)	NA	NA	NA	NA		
1.08 (-1.96 to -0.20)	-0.60 (-1.74 to 0.53)	-0.74 (-1.29 to -0.20)	-0.79 (-1.96 to 0.38)	-0.70 (-1.47 to 0.08)	-0.73 (-1.47 to 0.08)	-0.73 (-1.47 to 0.08)	-0.58 (-0.92 to -0.24)	-0.38 (-0.86 to 0.11)	-0.32 (-0.76 to 0.60)	-0.28 (-1.43 to 0.90)	-0.27 (-0.72 to 0.18)	0.04 (-0.92 to 0.99)	ST (-0.70 to 0.33)	-0.18 (-0.70 to 0.33)	0.07 (-0.32 to 0.47)	-0.50 (-1.21 to 0.21)		
-1.16 (-2.04 to -0.28)	-0.88 (-1.74 to -0.03)	-0.82 (-1.60 to -0.04)	-0.87 (-2.05 to 0.30)	-0.78 (-1.54 to -0.02)	-0.81 (-2.04 to 0.42)	-0.66 (-1.02 to -0.31)	-0.46 (-0.92 to -0.01)	-0.41 (-1.28 to 0.47)	-0.36 (-0.95 to 0.22)	-0.35 (-1.54 to 0.85)	-0.35 (-0.76 to 0.05)	-0.04 (-1.00 to 0.91)	-0.08 (-0.53 to 0.37)	TAU (-0.14 to 0.65)	0.26 (-0.14 to 0.65)	-0.32 (-1.07 to 0.44)		
-1.30 (-2.08 to -0.52)	-1.02 (-1.83 to -0.22)	-0.96 (-1.55 to -0.38)	-1.01 (-2.17 to 0.14)	-0.92 (-1.60 to -0.24)	-0.95 (-2.17 to 0.27)	-0.80 (-1.09 to -0.52)	-0.55 (-0.99 to -0.11)	-0.55 (-1.45 to 0.36)	-0.50 (-1.09 to 0.08)	-0.49 (-1.67 to 0.70)	-0.50 (-0.79 to -0.20)	-0.18 (-1.05 to 0.69)	-0.22 (-0.62 to 0.18)	-0.14 (-0.54 to 0.26)	WL (-0.14 to 0.65)	-0.57 (-1.29 to 0.14)		
-1.40 (-2.35 to -0.44)	-1.12 (-2.06 to -0.18)	-1.06 (-1.80 to -0.32)	-1.11 (-2.35 to 0.13)	-1.02 (-1.96 to -0.17)	-1.05 (-2.35 to 0.25)	-0.90 (-1.43 to -0.37)	-0.70 (-1.28 to -0.11)	-0.64 (-1.29 to 0.08)	-0.60 (-1.60 to 0.36)	-0.58 (-1.86 to 0.69)	-0.59 (-1.13 to -0.06)	-0.28 (-1.31 to 0.74)	-0.32 (-0.90 to 0.26)	-0.24 (-0.83 to 0.36)	-0.10 (-0.64 to 0.45)	NT (-0.64 to 0.45)		

■ Treatment ■ Efficacy at post-treatment (SMD [95% CI]) ■ Efficacy at follow-up (SMD [95% CI])

Figure 3 League table for efficacy at post-treatment and follow-up associated with different treatments. Treatments are ranked according to their P-scores of surface under the curve cumulative ranking for sedation starting with the best of efficacy at post-treatment. Results of the efficacy at post-treatment network meta-analysis are presented in the left lower half and results from efficacy at follow-up in the upper right half, if available. Comparisons between treatments should be read from left to right and the estimate is in the cell in common between the column-defining treatment and the row-defining treatment. For interpretation, a number less than zero favours the column-defining treatment of a cell, that is, this treatment leads to a decrease in endpoint score for PTSD symptom severity rating scales. Values depicted are standardised mean differences (SMDs) with associated 95% CIs. Significant results are in bold and underlined. BT, behavioural therapy; CPT, cognitive processing therapy; CT, cognitive therapy; DYN, psychodynamic therapy; EMDR, eye movement desensitisation and reprocessing; FT, family therapy; G-nTF-CBT, group non-trauma-focused cognitive-behavioural therapy; G-TF-CBT, group trauma-focused cognitive-behavioural therapy; I-nTF-CBT, individual non-trauma-focused cognitive-behavioural therapy; I-TF-CBT, individual trauma-focused cognitive-behavioural therapy; NA, not available; NT, no treatment; PT, play therapy; P-TF-CBT, parent-only trauma-focused cognitive-behavioural therapy; PTSD, post-traumatic stress disorder; SM, stress management; ST, supportive therapy; TAU, treatment as usual; WL, waitlist.

additional important outcomes (namely acceptability, depression symptoms and anxiety symptoms), and by using CINeMA to assess the certainty of evidence, and meta-regression analyses to explore potential sources of heterogeneity.

Effect sizes suggest that about half of the psychotherapies reduced more PTSD symptoms than control conditions, ranging between -1.40 and -0.46 . Only CPT, BT and individual TF-CBT were significantly more efficacious than

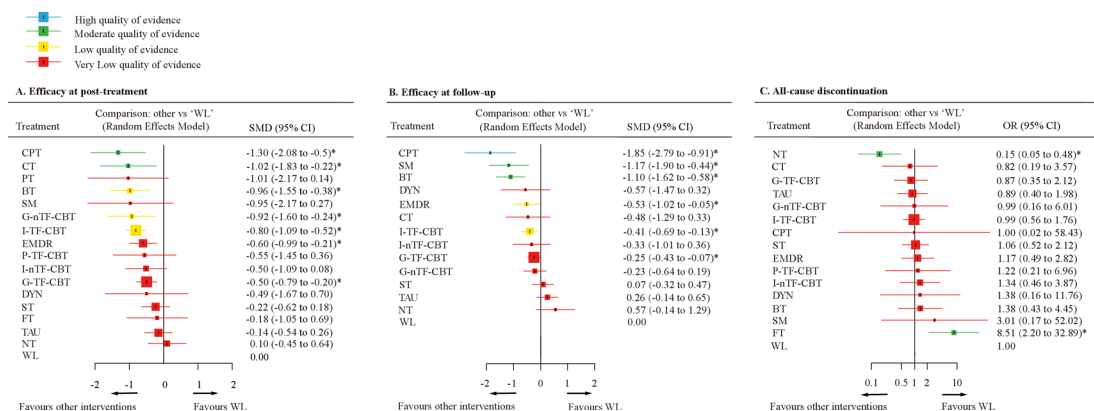


Figure 4 Forest plots of network meta-analysis of all trials for efficacy and acceptability. (A) Efficacy at post-treatment. (B) Efficacy at follow-up. (C) All-cause discontinuation. Interventions were compared with waitlist (WL), which was the reference compound. *Significant results. Colours indicate the confidence in the evidence for a given comparison: blue is high, green is moderate, yellow is low and red is very low. Confidence of outcomes was graded using the Confidence in Network Meta-Analysis application. BT, behavioural therapy; CPT, cognitive processing therapy; CT, cognitive therapy; DYN, psychodynamic therapy; EMDR, eye movement desensitisation and reprocessing; FT, family therapy; G-nTF-CBT, group non-trauma-focused cognitive-behavioural therapy; G-TF-CBT, group trauma-focused cognitive-behavioural therapy; I-nTF-CBT, individual non-trauma-focused cognitive-behavioural therapy; I-TF-CBT, individual trauma-focused cognitive-behavioural therapy; NT, no treatment; PT, play therapy; P-TF-CBT, parent-only trauma-focused cognitive-behavioural therapy; SM, standard mean difference; SMD, standard mean difference; ST, supportive therapy; TAU, treatment as usual.

Our analysis has several limitations. First, in this study, the certainty of evidence for most outcomes was rated as low or very low. Although the global test of inconsistency was not significant for efficacy at post-treatment, the heterogeneity was considerable. Therefore, the interpretation and application of the results of this study should be done with caution. Second, the classification of psychotherapy for PTSD in children and adolescents remains controversial; for example, the forms and elements of CBT could be mixed, especially for some modified CBT, some studies viewed CPT as one type of CBT and combined them as one node in the network,^{23 29} and TAU may be very different in various mental healthcare contexts. However, the assessment of transitivity in our analysis showed most of the comparisons had similar distribution of clinical and methodological variables. Third, although we excluded trials where psychotherapy was used as a combination strategy, some patients may have taken other treatments (eg, selective serotonin reuptake inhibitors), which might have led to a variation in effects of treatment.⁴¹ Furthermore, we did not exclude trials involving patients with comorbid psychiatric disorders, because a substantial proportion of the comorbid patients with depression and anxiety are seen in real world.⁴² However, this may increase the risk of violating transitivity required of the network meta-analysis. Fourth, we were not able to assess some outcomes, such as adverse events discontinuation, suicidality, quality of life and functional improvement, because no available data were reported in the original studies. Fifth, even if the Egger's test showed no significant publication bias for all outcomes, we found some potential asymmetry of funnel plots in this network meta-analysis, especially for the efficacy at post-treatment. In this study, we did our best to retrieve all available unpublished information and contacted study authors for supplementary information, but we cannot rule out the possibility that some unpublished studies are still missing.⁴³ Finally, some findings of this study are limited by the small number and generally small size of identified studies, for example, some interventions (eg, DYN, FT, PT, parent-only TF-BT) were based on only a single study, some interventions (eg, CPT, BT) included almost adolescents but very few children and subgroup analyses or meta-regressions failed to perform for some characteristic (eg, study-conducted countries). Some meta-regression analyses (eg, mean age, mean baseline severity of PTSD, trauma types) were performed, however, they failed to show significant results, therefore, there was no enough evidence to conclude that children and adolescents with which particular characteristic could benefit more from psychological therapies than others. These data should be analysed and contextualised at the individual patient level, without access to individual patient-level data; we cannot be completely confident about the accuracy of information contained in published studies or clinical study reports.⁴⁴

CONCLUSIONS

This network meta-analysis suggests that CPT, BT and individual TF-CBT appear to be good choices of psychotherapy for PTSD in young patients, while CPT appeared to produce more robust effects in adolescents. Other types of psychotherapies and different ways of delivering psychological treatment (eg, EMDR, group TF-CBT) can be alternative options. Nevertheless, there were few differences in terms of efficacy and acceptability between those psychotherapies. Future guidelines for PTSD in children and adolescents should consider this updated comparative evidence. In real-world practice,

interventions need to move beyond a 'one size fits all' to individualising treatment, as part of this process, clinicians should consider the importance of each outcome and the patients' preferences.

Author affiliations

- ¹Department of Psychiatry, The First Affiliated Hospital of Chongqing Medical University, Chongqing, China
- ²NHC Key Laboratory of Diagnosis and Treatment on Brain Functional Diseases, The First Affiliated Hospital of Chongqing Medical University, Chongqing, China
- ³Chongqing Key Laboratory of Neurobiology, Chongqing, China
- ⁴Department of Psychiatry, University of Oxford, Oxford, UK
- ⁵Oxford Health NHS Foundation Trust, Warneford Hospital, Oxford, UK
- ⁶Department of Neurology, The First Affiliated Hospital of Chongqing Medical University, Chongqing, China
- ⁷Institute of Primary Health Care, University of Bern, Bern, Switzerland
- ⁸Department of Neurology, The Second Affiliated Hospital of Chongqing Medical University, Chongqing, China
- ⁹Department of Psychology, Harvard University, Cambridge, Massachusetts, USA
- ¹⁰Department of Clinical, Neuro and Developmental Psychology, Amsterdam Public Health research institute, Vrije Universiteit Amsterdam, Amsterdam, The Netherlands
- ¹¹Institute for Complementary and Integrative Medicine, University Hospital Zurich and University of Zurich, Zurich, Switzerland
- ¹²Department of Child and Adolescent Psychiatry, Hôpital Pitié-Salpêtrière, Institut des Systèmes Intelligents et Robotiques, Université Pierre et Marie Curie, Paris, France
- ¹³University of Sydney, Sydney, New South Wales, Australia
- ¹⁴Campbell Family Mental Health Research Centre, Centre for Addiction and Mental Health, Toronto, Ontario, Canada
- ¹⁵Department of Psychiatry, University of Toronto, Toronto, Ontario, Canada

Twitter Andrea Cipriani @And_Cipriani

Acknowledgements Rita Rosner and Eline Rimane, Department of Psychology, Catholic University Eichstätt-Ingolstadt, Eichstätt, Germany; Elisa Pfeiffer, Clinic for Child and Adolescent Psychiatry/Psychotherapy, Ulm University, Ulm; Wietse A. Tol, Department of Public Health, University of Copenhagen, Denmark; Tim Dalgleish, Medical Research Council Cognition and Brain Sciences Unit, University of Cambridge, Cambridge, England provided unpublished data or checked the unclear data in this review. None of these persons was compensated for this work.

Contributors XZ and PX are co-last authors. XZ and PX had full access to all the data in the study and take responsibility for the integrity of the data and the accuracy of the data analysis. Concept and design—XZ, YZ, JRW, PC, JB, CDG, DC, DG, TT and PX. Acquisition, analysis or interpretation of data—YX, AC, JRW, PC, YZ, JB, DC, DG, AVR, TT, XZ and PX. Drafting of the manuscript—YX, XZ, JRW, PC and PX. Critical revision of the manuscript for important intellectual content—YX, AC, YZ, CDG, JRW, PC, JB, DC, DG, AVR, XZ and PX. Statistical analysis—YX, YZ, TT, CDG, XL, LF, XL, YJ, KD, AC and PX. Obtained funding—PX and XZ. Administrative, technical or material support—XZ, CDG and PX. Supervision—XZ, CDG, AC and PX.

Funding This study was supported by grant 2017YFA0505700 from the National Key Research and Development Program of China (PX); grant 2019PT320002 from the Non-profit Central Research Institute Fund of Chinese Academy of Medical Sciences (PX); grant 81820108015 from the National Natural Science Foundation of China (PX); grant 81873800 from the National Natural Science Foundation of China (XZ); grant T04040016 from the High-level Talents Special Support Plan of Chongqing (XZ); grant cstc2020jcyj-jqX0024 from the institutional funds from the Chongqing Science and Technology Commission (XZ). AC is supported by the National Institute for Health Research (NIHR) Oxford Cognitive Health Clinical Research Facility, by an NIHR Research Professorship (grant RP-2017-08-ST2-006), by the NIHR Oxford and Thames Valley Applied Research Collaboration and by the NIHR Oxford Health Biomedical Research Centre (grant BRC-1215-20005).

Disclaimer The funding sources had no role in the design and conduct of the study; collection, management, analysis, and interpretation of the data; preparation, review, or approval of the manuscript; and decision to submit the manuscript for publication. The views expressed are those of the authors and not necessarily those of the National Key Research and Development Program of China, Non-profit Central Research Institute Fund of Chinese Academy of Medical Sciences, or National Natural Science Foundation of China.

Competing interests AC has received research and consultancy fees from INCiPT (Italian Network for Paediatric Trials), CARIPO Foundation and Angelini Pharma. JRW reported support from unrelated grants from the National Institute of Mental Health and the Institute of Education Sciences, US Department of Education; he also receives royalties for books and honoraria for various invited presentations. PC reported support for unrelated grants from the European Commission, and ZonMw, for being Chair of the Mental Health Priority Area of the Wellcome Trust in London,

UK; and he receives royalties for books, and for occasional workshops and invited addresses. DC reported past consultation for or the receipt of honoraria from Otsuka, Shire, Lundbeck, Roche, Janssen and Biocodex. XZ reported receiving lecture fees from Janssen Pharmaceutica and Lundbeck. PX reported receiving lecture fees from Eli Lilly and Company, Janssen Pharmaceutica, Lundbeck and Pfizer. No other disclosures were reported.

Patient consent for publication Not required.

Provenance and peer review Not commissioned; internally peer reviewed.

Data availability statement Data are available in a public, open access repository.

Supplemental material This content has been supplied by the author(s). It has not been vetted by BMJ Publishing Group Limited (BMJ) and may not have been peer-reviewed. Any opinions or recommendations discussed are solely those of the author(s) and are not endorsed by BMJ. BMJ disclaims all liability and responsibility arising from any reliance placed on the content. Where the content includes any translated material, BMJ does not warrant the accuracy and reliability of the translations (including but not limited to local regulations, clinical guidelines, terminology, drug names and drug dosages), and is not responsible for any error and/or omissions arising from translation and adaptation or otherwise.

Open access This is an open access article distributed in accordance with the Creative Commons Attribution Non Commercial (CC BY-NC 4.0) license, which permits others to distribute, remix, adapt, build upon this work non-commercially, and license their derivative works on different terms, provided the original work is properly cited, appropriate credit is given, any changes made indicated, and the use is non-commercial. See: <http://creativecommons.org/licenses/by-nc/4.0/>.

ORCID iDs

Andrea Cipriani <http://orcid.org/0000-0001-5179-8321>

Pim Cuijpers <http://orcid.org/0000-0001-5497-2743>

Peng Xie <http://orcid.org/0000-0002-0081-6048>

REFERENCES

- 1 Kassam-Adams N, Marsac ML, Hildenbrand A, et al. Posttraumatic stress following pediatric injury: update on diagnosis, risk factors, and intervention. *JAMA Pediatr* 2013;167:1158–65.
- 2 Hodes M. New developments in the mental health of refugee children and adolescents. *Evid Based Ment Health* 2019;22:72–6.
- 3 Winston FK, Kassam-Adams N, Garcia-España F, et al. Screening for risk of persistent posttraumatic stress in injured children and their parents. *JAMA* 2003;290:643–9.
- 4 Maercker A, Brewin CR, Bryant RA, et al. Diagnosis and classification of disorders specifically associated with stress: proposals for ICD-11. *World Psychiatry* 2013;12:198–206.
- 5 Jones R. Neurogenetics: trauma and stress, from child to adult. *Nat Rev Genet* 2013;14:77.
- 6 Bloomfield MAP. Trauma and post-traumatic stress disorder: children should be seen and heard. *Lancet Psychiatry* 2019;6:193–4.
- 7 Cohen JA, Bukstein O, Walter H, Benson SR, et al. Practice parameter for the assessment and treatment of children and adolescents with posttraumatic stress disorder. *J Am Acad Child Adolesc Psychiatry* 2010;49:414–30.
- 8 (UK). NCCfMH. post-traumatic stress disorder: the management of PTSD in adults and children in primary and secondary care. Leicester (UK), 2005. Available: <https://www.ncbi.nlm.nih.gov/books/NBK56494/> [Accessed 7 Aug 2021].
- 9 Morina N, Koerssen R, Pollet TV. Interventions for children and adolescents with posttraumatic stress disorder: a meta-analysis of comparative outcome studies. *Clin Psychol Rev* 2016;47:41–54.
- 10 Gillies D, Taylor F, Gray C, et al. Psychological therapies for the treatment of post-traumatic stress disorder in children and adolescents. *Cochrane Database Syst Rev* 2012;12:CD006726.
- 11 Deblinger E, Mannarino AP, Cohen JA, Runyon JA, et al. Trauma-focused cognitive behavioral therapy for children: impact of the trauma narrative and treatment length. *Depress Anxiety* 2011;28:67–75.
- 12 Salloum A, Overstreet S. Evaluation of individual and group grief and trauma interventions for children post disaster. *J Clin Child Adolesc Psychol* 2008;37:495–507.
- 13 Smith P, Dalgleish T, Meiser-Stedman R. Practitioner review: posttraumatic stress disorder and its treatment in children and adolescents. *J Child Psychol Psychiatry* 2019;60:500–15.
- 14 Bisson JJ, Berliner L, Cloitre M, et al. The International Society for traumatic stress studies new guidelines for the prevention and treatment of posttraumatic stress disorder: methodology and development process. *J Trauma Stress* 2019;32:475–83.
- 15 Mota NP, Tsai J, Sareen J, et al. High burden of subthreshold DSM-5 post-traumatic stress disorder in U.S. military veterans. *World Psychiatry* 2016;15:185–6.
- 16 Pynoos RS, Steinberg A, et al. *The UCLA PTSD reaction index for DSM-IV (revision 1)*. Los Angeles: UCLA Trauma Psychiatry Program, 1998.

- 17 Zhang Y, Zhou X, Yang L, et al. Comparative efficacy and acceptability of psychotherapies for post-traumatic stress disorder in children and adolescents: study protocol for a systematic review and network meta-analysis. *BMJ Open* 2018;8:e020198–8.
- 18 Boutron I, Güttert L, Estellat C, Moher D, et al. Reporting methods of blinding in randomized trials assessing nonpharmacological treatments. *PLoS Med* 2007;4:e61.
- 19 Sterne JAC, Savović J, Page MJ, et al. Rob 2: a revised tool for assessing risk of bias in randomised trials. *BMJ* 2019;366:l4898.
- 20 Nikolakopoulou A, Higgins JPT, Papakonstantinou T, et al. Cinema: an approach for assessing confidence in the results of a network meta-analysis. *PLoS Med* 2020;17:e1003082.
- 21 Moshier SJ, Bovin MJ, Gay NG, et al. Examination of posttraumatic stress disorder symptom networks using clinician-rated and patient-rated data. *J Abnorm Psychol* 2018;127:541–7.
- 22 Higgins JPT, Chandler J, Cumpston M. *Cochrane Handbook for systematic reviews of interventions version 6.2, 2021..* Available: <https://training.cochrane.org/handbook> [Accessed 7 Aug 2021].
- 23 Gerger H, Munder T, Gemperli A, Nüesch E, et al. Integrating fragmented evidence by network meta-analysis: relative effectiveness of psychological interventions for adults with post-traumatic stress disorder. *Psychol Med* 2014;44:3151–64.
- 24 Higgins JPT, Jackson D, Barrett JK, Lu G, et al. Consistency and inconsistency in network meta-analysis: concepts and models for multi-arm studies. *Res Synth Methods* 2012;3:98–110.
- 25 Mavridis D. Network meta-analysis in a nutshell. *Evid Based Ment Health* 2019;22:100–1.
- 26 Rucker G, Schwarzer G. Ranking treatments in frequentist network meta-analysis without resampling methods. *BMC Med Res Methodol* 2015;15:58.
- 27 Balduzzi S, Rucker G, Schwarzer G. How to perform a meta-analysis with R: a practical tutorial. *Evid Based Ment Health* 2019;22:153–60.
- 28 Chaimani A, Higgins JPT, Mavridis D, et al. Graphical tools for network meta-analysis in STATA. *PLoS One* 2013;8:e76654.
- 29 Mavranzeouli I, Megnin-Viggars O, Daly C, et al. Research review: psychological and psychosocial treatments for children and young people with post-traumatic stress disorder: a network meta-analysis. *J Child Psychol Psychiatry* 2020;61:18–29.
- 30 Matulis S, Resick PA, Rosner R, et al. Developmentally adapted cognitive processing therapy for adolescents suffering from posttraumatic stress disorder after childhood sexual or physical abuse: a pilot study. *Clin Child Fam Psychol Rev* 2014;17:173–90.
- 31 Association AP. Clinical practice guideline for the treatment of posttraumatic stress disorder. Available: <http://www.wapaorg/ptsd-guideline/treatments/index.aspx> [Accessed 7 Aug 2021].
- 32 Rosner R, Rimane E, Frick U, et al. Effect of developmentally adapted cognitive processing therapy for youth with symptoms of posttraumatic stress disorder after childhood sexual and physical abuse: a randomized clinical trial. *JAMA Psychiatry* 2019;76:484–91.
- 33 Ahrens J, Rexford L. Cognitive processing therapy for incarcerated adolescents with PTSD. *J Aggress Maltreat Trauma* 2002;6:201–16.
- 34 Anna Voge RR. Lost in transition? evidence-based treatments for adolescents and young adults with posttraumatic stress disorder and results of an uncontrolled feasibility trial evaluating cognitive processing therapy. *Clin Child Fam Psychol Rev* 2020.
- 35 Watts BV, Schnurr PP, Mayo L, Young-Xu Y, et al. Meta-Analysis of the efficacy of treatments for posttraumatic stress disorder. *J Clin Psychiatry* 2013;74:e541–50.
- 36 Ehnholt KA, Smith PA, Yule W. School-Based cognitive-behavioural therapy group intervention for refugee children who have experienced war-related trauma. *Clin Child Psychol Psychiatry* 2005;10:235–50.
- 37 de Roos C, van der Oord S, Zijlstra B, et al. Comparison of eye movement desensitization and reprocessing therapy, cognitive behavioral writing therapy, and wait-list in pediatric posttraumatic stress disorder following single-incident trauma: a multicenter randomized clinical trial. *J Child Psychol Psychiatry* 2017;58:1219–28.
- 38 Lambert JE, Alhassoon OM. Trauma-focused therapy for refugees: meta-analytic findings. *J Couns Psychol* 2015;62:28–37.
- 39 Cuijpers P, Quero S, Papola D, et al. Care-as-usual control groups across different settings in randomized trials on psychotherapy for adult depression: a meta-analysis. *Psychol Med* 2021;51:634–44.
- 40 Kazak AE, Alderfer MA, Streisand R, et al. Treatment of posttraumatic stress symptoms in adolescent survivors of childhood cancer and their families: a randomized clinical trial. *J Am Psychol* 2004;18:493–504.
- 41 Cohen JA, Mannarino AP, Perel JM, et al. A pilot randomized controlled trial of combined trauma-focused CBT and sertraline for childhood PTSD symptoms. *J Am Acad Child Adolesc Psychiatry* 2007;46:811–9.
- 42 Lewis SJ, Arseneault L, Caspi A, et al. The epidemiology of trauma and post-traumatic stress disorder in a representative cohort of young people in England and Wales. *Lancet Psychiatry* 2019;6:247–56.
- 43 de Vries YA, Roest AM, Turner EH, et al. Hiding negative trials by pooling them: a secondary analysis of pooled-trials publication bias in FDA-registered antidepressant trials. *Psychol Med* 2019;49:2020–6.
- 44 Cipriani A, Tomlinson A. Providing the most appropriate care to our individual patients. *Evid Based Ment Health* 2019;22:1–2.