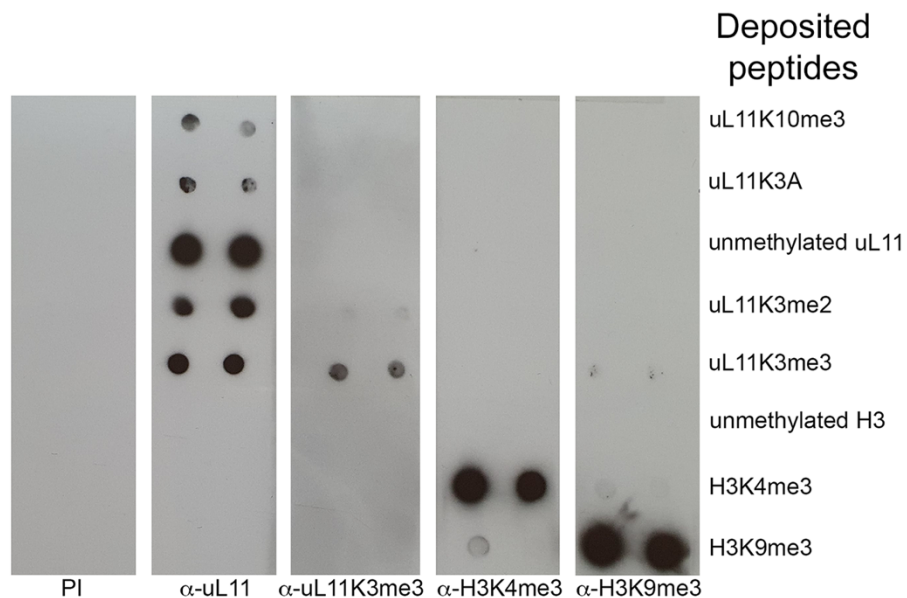


### Supplementary Figure 1: Specificity of the uL11K3me3 antibody

0.2 (left) and 0.05  $\mu\text{g}$  (right) of each peptide were deposited on nitrocellulose membrane. Membranes were then incubated with the indicated primary antibodies. Secondary antibodies were as described in Materials and Methods.

**Peptides:** unmethylated uL11, uL11K10me2, uL11K3A, uL11K3me2, and uL11K3me3 peptides were synthesized at the proteomic platform of the Institute of Biology Paris Seine; H3K4me3 and H3K9me3 peptides were from Diagenode, C16000003 and C160000056, respectively.

**Antibodies:** PI: rabbit preimmun serum;  $\alpha$ -uL11: 1/14000, described in Materials and Methods;  $\alpha$ -uL11K3me3: 1/10000, described in Materials and Methods;  $\alpha$ -H3K4me3: 1/1000, Diagenode C15310003;  $\alpha$ -H3K9me3: 1/1000, Diagenode C15100146. Secondary antibodies: 1/10000.



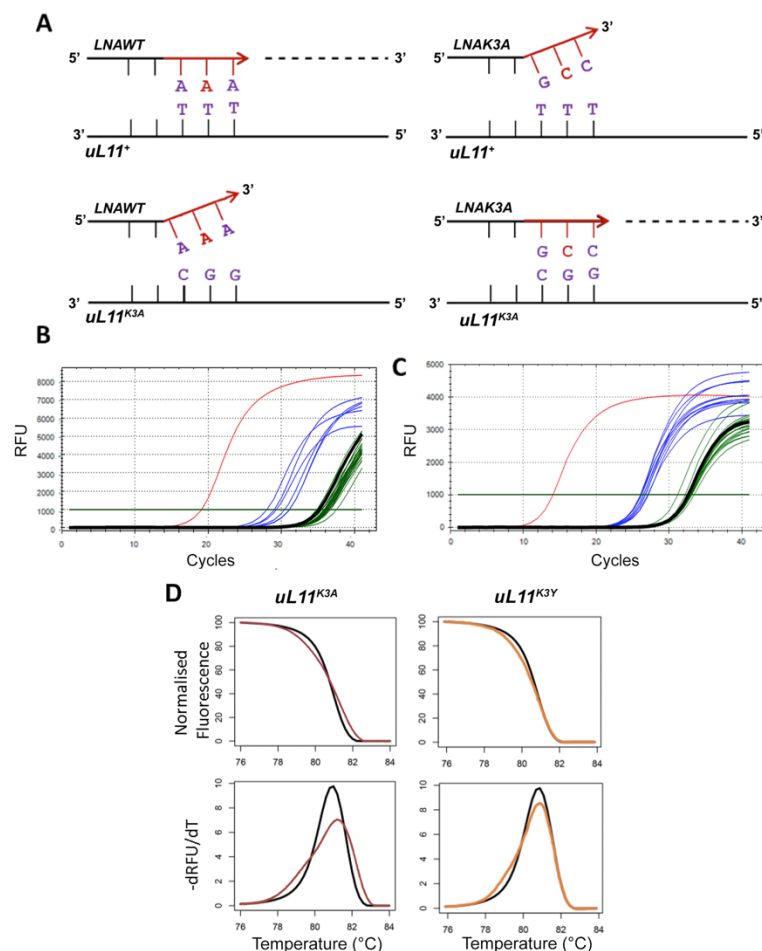
## Supplementary Figure 2: Molecular screening for the *uL11*<sup>K3A</sup> allele

**A** – Rationale for discriminative PCR. Purple bases correspond to the target codon. Red bases stand for locked nucleic acids (LNA). The *LNAWT* primer ended with the lysine AAA codon of the wild-type *uL11* gene whereas the *LNAK3A* primer ended with the alanine GCC codon corresponding to the desired mutation.

**B** – qPCRs were performed with the *LNAK3A* primer matching the *uL11*<sup>K3A</sup> allele. Red curve: plasmid carrying the *uL11*<sup>K3A</sup> allele as positive control. Black curve: genomic DNA from a wild-type fly. Blue curves: pools of up to 5 different genomic DNAs from candidate G1 flies considered to be positive. Green curves: pools of up to 5 different genomic DNAs from candidate G1 flies considered to be negative.

**C** – The same qPCRs were performed on individual genomic DNAs from the pools that were previously found to be positive for the *uL11*<sup>K3A</sup> allele. Several individuals wearing the mutation were thus identified (blue curves).

**D** – High Resolution Melting Analysis (HMRA) of *uL11* mutants. Melting profile of the *uL11* amplicons from genomic DNAs of G1 flies. Melting peaks flatter and broader than the reference (black) revealed the presence of two different amplicons, indicating that the tested DNA contained a mutation at the *uL11* locus. Melting curves were normalized according to the method described by (26). RFU: Relative Fluorescence Unit.



### Supplementary Figure 3: Sequence of the *uL11* alleles of G0 flies

Founder G0 flies were named after their gender (M, male; F, female) and the order of their emergence. Each allele was recovered in several descendants of the same founders. The *uL11*<sup>K3A</sup> and *uL11*<sup>ΔK3</sup> alleles were found in the progeny of two different founders. Substitution alleles were named to reflect the amino acid change in the uL11 protein, following the amino acid one letter code. The bottom two alleles were named after the reading frameshift they introduce in the *uL11* gene. The wild-type *uL11* sequence is provided as reference. The start and the lysine 3 codons of *uL11* are highlighted in grey. Mutants F-4 and F+2 introduce a +2 reading frame shift that puts the uL11 CDS in frame with an ATG codon located in the 5'UTR. A protein with a 24 amino acid extension might then be produced.

Founder	Allele	Sequence
	wild-type	ACCGCTATGCCTCCCAAATTCGACCCAACGGAA
M-12	K3A-12	ACCGCTATGCCTCCCGCCTTCGACCCAACGGAA
M-43	K3A-43	ACCGCTATGCCTCCCGCCTTCGACCCAACGGAA
F-6	K3A-6	ACCGCTATGCCTCCCGCCTTCGACCCAACGGAA
M-12	ΔK3-12	ACCGCTATGCCTCCC---TTCGACCCAACGGAA
M-43	ΔK3-43	ACCGCTATGCCTCCC---TTCGACCCAACGGAA
M-31	K3Y	ACCGCTATGCCTCCCTACTTCGACCCAACGGAA
M-5	ΔK3F4	ACCGCTATGCCTCCC-----GACCCAACGGAA
M-5	P2QK3R	ACCGCTATGCCTCAACGCCTTCGACCCAACGGAA
M-12	P2LK3E	ACCGCTATGCCTCTTGAATTCGACCCAACGGAA
M-43	F-4	ACCGCTATGCCTCCCTATGCTTCGACCCAACGGAA
F-6	F+2	ACCGCTATGCCTCC----TTCGACCCAACGGAA

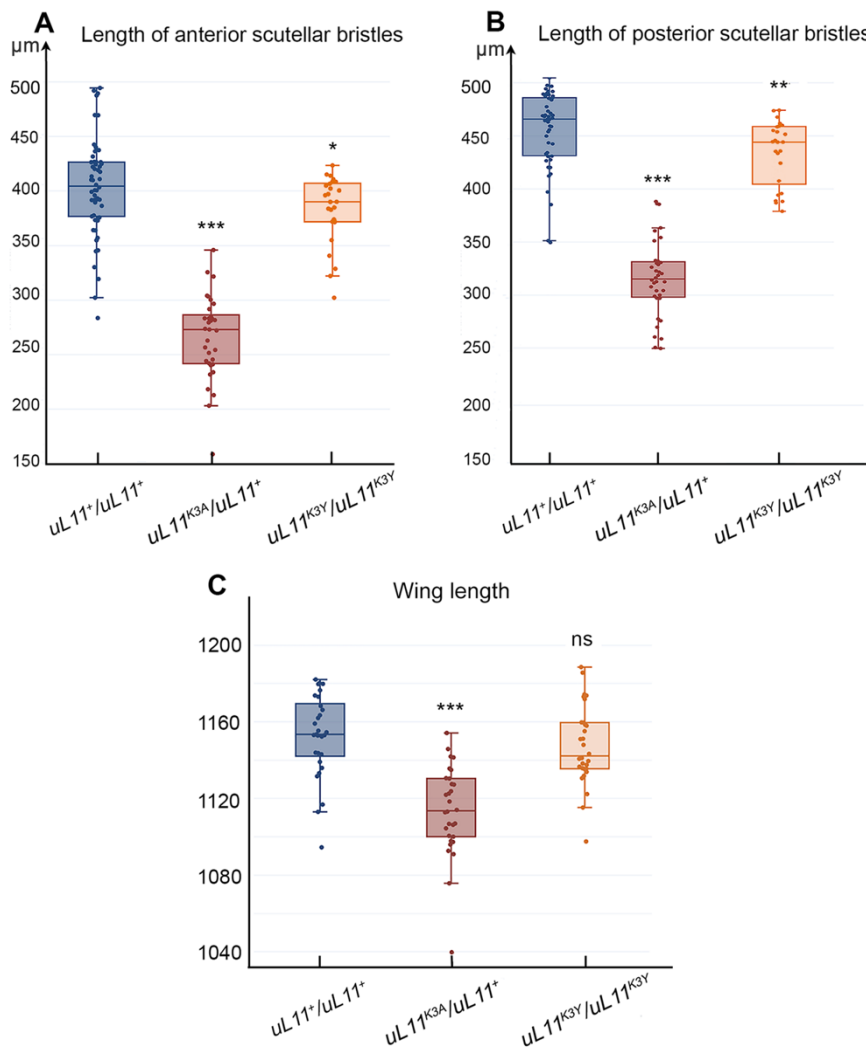
### Supplementary Figure 4: Analysis of bristles and wings in female *uL11* mutants

**A** – Length of anterior scutellar bristles of wild-type females (blue;  $n = 54$ ), *uL11<sup>K3A</sup>/uL11<sup>+</sup>* (burgundy,  $n = 33$ ) and *uL11<sup>K3Y</sup>/uL11<sup>K3Y</sup>* (orange,  $n = 25$ ).

**B** – Length of posterior scutellar bristles of wild-type males (blue;  $n = 51$ ), *uL11<sup>K3A</sup>/uL11<sup>+</sup>* (burgundy,  $n = 36$ ) and *uL11<sup>K3Y</sup>/uL11<sup>K3Y</sup>* (orange,  $n = 50$ ).

**C** – Wing size of *uL11* wild-type females (blue;  $n = 29$ ), *uL11<sup>K3A</sup>/uL11<sup>+</sup>* (burgundy,  $n = 30$ ) and *uL11<sup>K3Y</sup>/uL11<sup>K3Y</sup>* (orange,  $n = 25$ ).

t-tests: \*\*\* p-value < 0.001; \*\* p-value < 0.01; \* p-value < 0.05; ns: non significant.



**Supplementary Table 1:** Oligonucleotides used in this study. In primers *LNA-WT* and *LNA-K3A*, uppercase nucleotides correspond to the LNA bases. In primers *pho-sgRNA\_F* and *pho-sgRNA\_R*, uppercase nucleotides correspond to the floating sequences used for cloning. The bold guanosine was introduced to increase efficiency of the U6 promoter. In the *ssODN*, the complementary ATG and alanine codon sequences are bold and in uppercases, the PAM sequence corresponding to the single guide RNA is in bold.

<b>High Resolution Melting Analysis</b>	
<i>uL11-HRMA_F</i>	5' -tgcggtaaagtacatgagctg-3'
<i>uL11-HRMA_R</i>	5' -tcgaagctcaactcctcaca-3'
<b>LNA Primers</b>	
<i>LNA-WT</i>	5' -gataccgctatgcctcccaAa-3'
<i>LNA-K3A</i>	5' -gataccgctatgcctcccGc-3'
<i>CRISPR1_R</i>	5' -gaccgaggggaccgatctt-3'
<b>uL11 Sequencing</b>	
<i>uL11-708_F</i>	5' -cgctactgagctttgctacacccc-3'
<i>uL11+805_R</i>	5' -caataacatcgtgaggggtgct-3'
<b>Guide RNA</b>	
<i>sgRNA</i>	5' -tccgttgggtcgaatttggg-3'
<b>Cloning of sgRNA in pU6-BbsI-chiRNA</b>	
<i>pho-sgRNA_F</i>	5' -CTTC <b>G</b> tccgttgggtcgaatttggg-3'
<i>pho-sgRNA_R</i>	5' -AAACcccaaattcgaccaacggac-3'
<b>Template for fly mutagenesis</b>	
<i>ssODN</i>	5' -agctcaactcctcaca <sup>5</sup> aaactcgccttacttacc <sup>5</sup> caatttaacttccg <sup>5</sup> tgggtcga <b>GGC</b> gggagg <b>CAT</b> a g <sup>5</sup> cggtatc <sup>5</sup> tggc <sup>5</sup> tgaacagtcg <sup>5</sup> ctg <sup>5</sup> taagg <sup>5</sup> caaagattac <sup>5</sup> g <sup>5</sup> ttag <sup>5</sup> ttt-3'
<b>uL11<sup>K3Y</sup> directed mutagenesis</b>	
<i>K3Y_F</i>	5' -caccatgcctccctacttcgaccaacgg-3'
<i>K3Y_R</i>	5' -ccg <sup>5</sup> tgggtcga <sup>5</sup> agtagggaggcatg <sup>5</sup> gtg-3'

**qRT-PCR**

<i>Hsp67Bc_F</i>	5'-ctgcttatttgaggctcca-3'
<i>Hsp67Bc_R</i>	5'-ttgatttgcacaccctgggt-3'
<i>GstE6_F</i>	5'-gcccaactttcaccggaata-3'
<i>GstE6_R</i>	5'-tcggcatatttcgagacc-3'
<i>CG13516_F</i>	5'-gctaactccaggacccatat-3'
<i>CG13516_R</i>	5'-gcgacaatagtggtttccag-3'
<i>GAPDH_F</i>	5'-gacgaaatcaaggctaaggctcg-3'
<i>GAPDH_R</i>	5'-aatgggtgtcgctgaagaagtc-3'
<i>RP49_F</i>	5'-ccgcttcaaggacagtatc-3'
<i>RP49_R</i>	5'-gacaatctccttgcgcttct-3'

**Supplementary Table 2: Genes deregulated in at least one of the three genotypes (*corto*<sup>L1</sup>/*corto*<sup>420</sup>, *uL11*<sup>K3A</sup>, *uL11*<sup>K3Y</sup>).**

Up-regulated genes (green): log<sub>2</sub> fold-change > 0.5, adjusted p-value < 5.E-02

Down-regulated genes (orange): log<sub>2</sub> fold-change < -0.5, adjusted p-value < 5.E-02

Gene ID	Gene symbol	Base Mean	log <sub>2</sub> FoldChange <i>corto</i> <sup>L1</sup> / <i>corto</i> <sup>420</sup> versus <i>w</i> <sup>1118</sup>	adj p-value <i>corto</i> <sup>L1</sup> / <i>corto</i> <sup>420</sup> versus <i>w</i> <sup>1118</sup>	log <sub>2</sub> FoldChange <i>uL11</i> <sup>K3A</sup> versus <i>w</i> <sup>1118</sup>	adj p-value <i>uL11</i> <sup>K3A</sup> versus <i>w</i> <sup>1118</sup>	log <sub>2</sub> FoldChange <i>uL11</i> <sup>K3Y</sup> versus <i>w</i> <sup>1118</sup>	adj p-value <i>uL11</i> <sup>K3Y</sup> versus <i>w</i> <sup>1118</sup>
FBgn0085813	18SrRNA-Psi:CR41602	492	0.12	5.47E-01	2.53	1.23E-03	-0.01	1.00E+00
FBgn0085753	28SrRNA-Psi:CR40596	815	0.17	2.96E-01	1.41	1.30E-02	-0.01	1.00E+00
FBgn0085771	28SrRNA-Psi:CR40741	96	3.34	8.74E-05	3.25	5.48E-05	-0.01	1.00E+00
FBgn0267508	28SrRNA-Psi:CR45848	67	0.18	3.14E-01	2.82	4.86E-04	0.00	1.00E+00
FBgn0267511	28SrRNA-Psi:CR45851	67	-0.02	8.65E-01	1.85	1.04E-02	0.00	1.00E+00
FBgn0267513	28SrRNA-Psi:CR45853	36	0.04	8.53E-01	2.51	1.39E-03	-0.01	1.00E+00
FBgn0267515	28SrRNA-Psi:CR45855	55	0.08	5.85E-01	1.60	9.23E-03	0.00	1.00E+00
FBgn0267520	28SrRNA-Psi:CR45860	204	0.27	8.96E-02	1.47	1.26E-02	0.00	1.00E+00
FBgn0052016	4E-T	2991	-0.97	6.64E-13	-0.07	3.82E-01	0.00	1.00E+00
FBgn0023129	asv	91	-0.12	6.58E-01	-1.00	6.49E-03	-0.18	1.45E-01
FBgn0039890	ABCD	2965	-0.64	4.77E-10	-0.08	2.74E-01	-0.06	2.18E-01
FBgn0004852	Ac76E	330	-3.26	6.23E-33	0.04	6.42E-01	0.00	1.00E+00
FBgn0027620	Actf	2690	-0.62	3.33E-06	0.02	8.64E-01	0.01	9.06E-01
FBgn0051865	Ada1-1	19	0.05	8.42E-01	-5.48	5.96E-05	0.07	3.78E-01
FBgn0026086	Adar	2162	-0.71	2.33E-05	-0.01	9.70E-01	0.00	1.00E+00
FBgn0026573	ADD1	1787	-0.61	3.07E-10	-0.02	9.06E-01	0.01	1.00E+00
FBgn0052068	Adi1	187	0.12	6.12E-01	0.41	5.04E-03	0.79	4.87E-07
FBgn0038223	Afti	793	-0.64	8.75E-06	0.00	1.00E+00	0.00	1.00E+00
FBgn0029813	AgmNAT	22	0.59	2.40E-02	0.05	6.08E-01	0.00	1.00E+00
FBgn0250816	AGO3	64	-0.64	1.52E-02	2.09	1.17E-13	0.38	5.07E-02
FBgn0024912	agt	851	0.61	3.04E-06	1.63	1.55E-43	0.21	4.55E-02
FBgn0014455	Ahcy	3702	0.65	5.05E-11	0.02	8.74E-01	0.00	1.00E+00
FBgn0033351	AIMP1	804	0.72	4.73E-05	0.05	5.43E-01	0.00	1.00E+00
FBgn0050185	AIMP3	582	0.65	2.84E-04	0.03	7.70E-01	0.00	1.00E+00
FBgn0027932	Akap200	21721	-1.15	5.83E-49	0.04	6.85E-01	0.00	1.00E+00
FBgn0012036	Aldh	651	0.77	6.08E-03	0.00	9.72E-01	0.07	4.09E-01
FBgn0011297	Alq3	292	0.70	8.24E-06	-0.28	7.21E-03	-0.01	9.05E-01
FBgn0283479	Alp1	47	0.10	5.76E-01	-0.60	5.71E-02	-0.01	1.00E+00
FBgn0033423	Alp6	12	-0.02	8.84E-01	-1.02	3.05E-02	-0.09	3.70E-01
FBgn0034710	Alp7	85	-0.13	2.20E-01	-8.44	5.06E-06	-0.01	1.00E+00
FBgn0034712	Alp8	99	-0.07	4.75E-01	-0.66	5.26E-02	0.00	1.00E+00
FBgn0086361	alph	3610	-0.65	1.44E-17	0.04	6.45E-01	0.00	1.00E+00
FBgn0015571	alpha-Est3	211	0.63	2.46E-03	0.42	6.49E-03	0.00	1.00E+00
FBgn0003884	alphaTub84B	98958	0.58	2.30E-12	-0.03	7.61E-01	-0.03	4.82E-01
FBgn0003886	alphaTub85E	97	3.34	1.93E-15	0.01	8.95E-01	0.01	9.37E-01
FBgn0031068	Alr	351	0.61	1.35E-03	0.39	6.66E-03	0.02	8.04E-01
FBgn0000075	amd	647	0.26	1.88E-01	1.20	1.13E-18	0.00	1.00E+00
FBgn0025686	Amnionless	12	-0.02	9.37E-01	-0.61	5.12E-02	-0.01	1.00E+00
FBgn0030328	Amun	7039	-0.79	7.59E-17	0.01	9.64E-01	0.00	1.00E+00
FBgn0012037	Ance	10590	-0.08	5.00E-01	-0.70	3.42E-22	-0.03	4.37E-01
FBgn0032535	Ance-2	17	-0.11	5.24E-01	-0.59	4.26E-02	0.00	1.00E+00
FBgn0032536	Ance-3	9	0.02	8.74E-01	1.73	1.06E-02	0.01	1.00E+00
FBgn0011747	Ank	7198	-0.65	1.55E-07	-0.04	6.39E-01	0.00	1.00E+00
FBgn0052000	anne	6510	-0.58	4.18E-05	0.01	9.54E-01	0.01	1.00E+00
FBgn0260642	Antp	1348	-0.77	7.50E-06	-0.02	8.95E-01	0.01	1.00E+00
FBgn0267408	AOX1	329	0.55	2.96E-02	3.81	3.49E-23	0.01	1.00E+00
FBgn0036111	Aps	7280	-0.69	1.35E-08	0.02	8.52E-01	0.00	1.00E+00
FBgn0286516	aqz	7288	-1.14	3.19E-11	-0.03	8.04E-01	0.00	1.00E+00
FBgn0033928	Arc2	184	0.03	9.37E-01	3.19	8.75E-82	0.22	8.41E-02
FBgn0038893	Archease	334	0.25	2.21E-01	0.63	7.35E-06	0.00	1.00E+00
FBgn0013749	Arf102F	1709	-0.65	3.80E-07	-0.06	5.12E-01	-0.01	1.00E+00
FBgn0017418	ari-1	1097	-0.60	1.00E-06	0.04	6.78E-01	0.00	1.00E+00
FBgn0041164	armi	2051	-0.65	2.47E-07	-0.05	6.22E-01	0.00	1.00E+00
FBgn0031050	Arp10	640	0.68	3.14E-04	0.00	9.77E-01	0.00	1.00E+00
FBgn0001961	Arpc1	2195	0.59	5.56E-08	0.02	8.26E-01	-0.01	1.00E+00
FBgn0284255	Arpc4	1043	1.13	5.45E-17	0.08	3.28E-01	0.00	1.00E+00
FBgn0031437	Arpc5	1308	0.77	7.24E-08	0.00	9.90E-01	-0.01	9.73E-01
FBgn0033062	Ars2	4686	-0.64	7.16E-18	-0.01	9.72E-01	0.00	1.00E+00
FBgn0039908	Asator	1415	-0.76	7.99E-10	-0.04	7.13E-01	0.00	1.00E+00
FBgn0270926	AsnS	394	1.20	2.78E-06	0.16	1.49E-01	0.17	1.29E-01
FBgn0034793	asrij	688	0.86	1.78E-07	0.36	3.09E-03	0.00	1.00E+00
FBgn0017424	asRNA:CR11538	422	0.58	1.49E-02	-0.04	7.33E-01	0.01	1.00E+00
FBgn0265295	asRNA:CR42871	56	-0.73	4.32E-03	0.11	3.22E-01	0.01	9.91E-01
FBgn0263344	asRNA:CR43425	78	-0.50	3.31E-02	0.80	9.37E-03	0.00	1.00E+00
FBgn0263345	asRNA:CR43426	51	0.67	1.10E-02	0.01	9.32E-01	-0.01	1.00E+00
FBgn0263445	asRNA:CR43468	99	-0.59	7.51E-03	0.27	4.57E-02	0.02	7.54E-01
FBgn0264822	asRNA:CR44030	121	-0.10	7.14E-01	0.86	2.95E-04	1.64	7.16E-13
FBgn0264823	asRNA:CR44031	97	0.54	1.87E-02	1.28	2.34E-03	0.02	7.92E-01

FBgn0264837	asRNA:CR44045	82	-0.61	1.50E-02	-0.01	9.70E-01	0.01	1.00E+00
FBgn0265499	asRNA:CR44368	337	0.00	9.87E-01	1.03	2.46E-15	-0.60	2.20E-04
FBgn0265613	asRNA:CR44431	123	0.83	5.37E-04	-0.03	7.85E-01	0.01	1.00E+00
FBgn0266619	asRNA:CR45126	267	-0.96	7.58E-07	2.40	2.95E-15	0.95	3.69E-03
FBgn0266633	asRNA:CR45140	31	0.34	1.70E-01	4.88	2.30E-13	-0.02	8.78E-01
FBgn0266681	asRNA:CR45171	27	-1.00	3.76E-03	0.34	9.99E-02	0.05	5.27E-01
FBgn0266692	asRNA:CR45182	29	-0.64	1.70E-02	-0.03	7.96E-01	0.01	1.00E+00
FBgn0266705	asRNA:CR45195	68	0.10	7.19E-01	7.75	1.00E-27	0.00	1.00E+00
FBgn0267022	asRNA:CR45466	32	-0.97	1.72E-03	0.00	9.72E-01	0.00	1.00E+00
FBgn0267160	asRNA:CR45600	111	-5.01	2.08E-12	5.59	1.04E-17	5.92	1.38E-19
FBgn0267223	asRNA:CR45663	34	1.49	3.22E-04	0.02	9.09E-01	0.00	1.00E+00
FBgn0267302	asRNA:CR45738	32	0.61	2.24E-02	-0.08	4.91E-01	-0.01	1.00E+00
FBgn0267439	asRNA:CR45789	35	-0.71	1.03E-02	-0.03	7.98E-01	0.00	1.00E+00
FBgn0267485	asRNA:CR45835	898	0.61	4.33E-07	-0.03	7.65E-01	0.00	1.00E+00
FBgn0267550	asRNA:CR45890	135	0.74	2.39E-03	-0.09	4.80E-01	0.00	1.00E+00
FBgn0267758	asRNA:CR46089	20	0.02	9.50E-01	6.93	9.49E-07	0.01	1.00E+00
FBgn0015591	AstA	15	-0.47	4.28E-02	-0.85	2.71E-02	-0.03	7.69E-01
FBgn0033010	Atf6	1360	-0.98	3.85E-07	0.00	9.95E-01	0.00	1.00E+00
FBgn0037363	Atg17	1079	-0.92	3.17E-07	0.03	7.45E-01	0.00	1.00E+00
FBgn0032422	atilla	38	0.68	1.38E-02	-0.01	9.56E-01	0.00	1.00E+00
FBgn0016120	ATPsynD	4001	0.89	1.85E-13	-0.03	7.42E-01	0.00	1.00E+00
FBgn0028342	ATPsyndelta	2959	1.17	4.25E-42	0.05	5.61E-01	0.00	1.00E+00
FBgn0038224	ATPsynE	2430	0.91	4.10E-08	-0.01	9.18E-01	0.00	1.00E+00
FBgn0035032	ATPsynF	2536	0.99	9.61E-19	0.00	9.76E-01	0.00	1.00E+00
FBgn0020235	ATPsyngamma	5712	0.73	9.57E-18	0.01	9.13E-01	-0.01	1.00E+00
FBgn0016691	ATPsynO	3667	0.75	2.40E-11	0.01	9.10E-01	0.00	1.00E+00
FBgn0000150	awd	22227	0.68	1.45E-06	0.00	9.85E-01	0.00	1.00E+00
FBgn0013751	Awh	61	-0.10	7.33E-01	-1.11	2.95E-03	0.00	1.00E+00
FBgn0004870	bab1	47	0.12	6.72E-01	-1.35	7.56E-05	0.00	1.00E+00
FBgn0011300	babo	2914	-0.80	1.14E-09	-0.04	7.06E-01	0.00	1.00E+00
FBgn0031453	Bacc	14814	-1.10	3.05E-25	0.05	5.22E-01	0.01	9.02E-01
FBgn0031255	BBS8	105	0.44	6.81E-02	0.88	5.53E-05	0.01	1.00E+00
FBgn0052594	be	704	-0.59	7.31E-05	-0.07	4.14E-01	0.00	1.00E+00
FBgn0000173	ben	4467	-0.60	5.15E-06	-0.04	7.26E-01	0.00	1.00E+00
FBgn0260860	Bet5	305	0.66	1.09E-03	0.02	8.60E-01	0.00	1.00E+00
FBgn0284243	betaTub56D	87388	0.65	3.71E-15	-0.02	8.83E-01	-0.01	1.00E+00
FBgn0035871	Bl-1	1623	-0.69	7.33E-12	0.30	5.15E-05	0.00	1.00E+00
FBgn0000183	BicD	2135	-0.68	7.68E-09	0.06	4.83E-01	0.00	1.00E+00
FBgn0024491	Bin1	1697	0.32	1.04E-01	2.12	1.19E-36	0.00	1.00E+00
FBgn0028262	bjp2	3652	-1.02	1.89E-14	-0.07	3.85E-01	0.01	8.48E-01
FBgn0085284	Blos3	282	0.75	3.15E-04	0.04	6.56E-01	0.00	1.00E+00
FBgn0036449	bmm	105	0.20	4.43E-01	-1.35	1.15E-03	-0.01	1.00E+00
FBgn0037007	BNIP3	2102	-0.67	5.46E-06	0.02	8.57E-01	0.00	1.00E+00
FBgn0014135	bni	117	-0.63	1.26E-02	0.02	8.64E-01	0.00	1.00E+00
FBgn0261284	bou	1262	0.81	1.17E-08	0.09	2.46E-01	0.00	1.00E+00
FBgn0050169	Brca2	341	-0.64	8.41E-05	0.00	9.81E-01	0.00	1.00E+00
FBgn0000216	Brd	509	0.53	2.95E-03	1.17	7.95E-18	0.01	1.00E+00
FBgn0264001	bru3	51	0.05	8.22E-01	4.90	3.37E-15	-0.01	1.00E+00
FBgn0261822	Bsg	2702	-0.77	1.00E-06	0.00	9.76E-01	0.00	1.00E+00
FBgn0000229	bsk	1275	-0.72	5.53E-12	0.03	7.89E-01	0.00	1.00E+00
FBgn0000233	btd	63	0.21	3.76E-01	-2.19	6.57E-06	0.01	1.00E+00
FBgn0023096	btv	49	-0.11	6.87E-01	0.58	6.50E-02	0.03	7.38E-01
FBgn0259176	bun	5539	-0.70	3.32E-07	-0.41	7.00E-04	0.01	8.66E-01
FBgn0000246	c(3)G	214	-0.86	2.99E-05	0.06	5.01E-01	0.01	1.00E+00
FBgn0004863	C15	235	0.36	4.16E-02	-0.61	5.84E-06	0.00	1.00E+00
FBgn0263111	cac	124	0.37	1.37E-01	3.85	3.50E-29	-0.02	9.52E-01
FBgn0053653	Cadps	187	0.69	9.19E-03	1.58	2.50E-09	0.01	1.00E+00
FBgn0030054	Caf1-180	1658	-0.58	2.62E-04	0.04	6.21E-01	0.01	1.00E+00
FBgn0039928	Cals	4732	-0.77	1.60E-05	-0.03	8.06E-01	0.00	1.00E+00
FBgn0000253	Cam	12315	-1.48	3.62E-35	0.03	7.66E-01	0.00	1.00E+00
FBgn0016126	CaMKI	3031	-0.81	2.36E-10	0.00	9.77E-01	0.01	1.00E+00
FBgn0264607	CaMKII	2738	-0.98	1.88E-12	0.13	1.18E-01	0.08	2.06E-01
FBgn0267912	CanA-14F	856	-0.61	1.02E-04	0.04	6.99E-01	0.00	1.00E+00
FBgn0037831	Cap-H2	1038	-0.59	1.70E-07	0.03	7.58E-01	0.07	2.13E-01
FBgn0004878	cas	19	0.61	1.87E-02	0.38	8.83E-02	0.00	1.00E+00
FBgn0285954	caz	3727	-0.58	1.17E-03	0.06	5.27E-01	0.00	1.00E+00
FBgn0031148	Cbs	2322	0.62	2.00E-17	0.05	5.13E-01	0.00	1.00E+00
FBgn0030954	CCKLR-17D3	380	0.67	3.15E-04	0.06	4.84E-01	0.00	1.00E+00
FBgn0010621	CCT5	11598	0.65	5.89E-18	0.05	5.39E-01	-0.04	3.73E-01
FBgn0052499	Cda4	4755	0.63	7.21E-13	0.03	7.32E-01	0.02	6.49E-01
FBgn0027491	Cdk5alpha	35	-0.75	9.09E-03	-0.09	3.69E-01	0.00	1.00E+00
FBgn0034437	CG10051	15	-0.03	8.98E-01	-2.23	8.63E-03	-0.38	9.09E-02
FBgn0036369	CG10089	215	-0.17	4.09E-01	0.84	4.59E-09	-0.35	2.02E-02
FBgn0032800	CG10137	20	0.26	2.83E-01	0.65	3.90E-02	0.00	1.00E+00
FBgn0032793	CG10189	280	0.09	6.85E-01	0.61	7.79E-06	0.00	1.00E+00
FBgn0038454	CG10324	235	-0.83	9.43E-06	0.06	9.40E-01	0.00	1.00E+00
FBgn0032805	CG10337	141	-0.44	3.08E-02	0.94	4.60E-08	0.00	1.00E+00
FBgn0034972	CG10339	12	0.07	6.39E-01	2.10	6.08E-04	1.55	5.81E-03
FBgn0034729	CG10344	43	-0.05	8.66E-01	1.22	1.10E-03	0.05	4.80E-01



FBgn0033019	CG10395	486	-0.99	3.91E-12	0.15	5.06E-02	0.00	1.00E+00
FBgn0033021	CG10417	4149	-0.87	9.78E-43	-0.05	4.73E-01	-0.02	6.07E-01
FBgn0036277	CG10418	472	0.97	6.82E-07	0.03	8.02E-01	0.00	1.00E+00
FBgn0037531	CG10445	247	-0.36	7.85E-02	0.81	6.20E-08	0.02	6.24E-01
FBgn0033017	CG10465	1501	-0.72	2.95E-08	-0.06	4.95E-01	-0.01	1.00E+00
FBgn0039312	CG10514	39	-1.49	7.99E-04	0.02	8.51E-01	0.00	1.00E+00
FBgn0039323	CG10559	50	0.14	5.95E-01	1.51	1.14E-08	0.00	1.00E+00
FBgn0032717	CG10600	1849	-0.73	1.91E-05	0.01	9.49E-01	0.00	1.00E+00
FBgn0036290	CG10638	2684	0.14	2.79E-01	1.24	2.06E-62	0.00	1.00E+00
FBgn0029666	CG10803	1895	-0.74	7.57E-06	-0.03	7.80E-01	0.00	1.00E+00
FBgn0027552	CG10863	209	0.62	2.02E-02	-0.03	7.37E-01	0.01	1.00E+00
FBgn0034312	CG10916	405	-0.21	2.73E-01	1.32	2.49E-27	0.00	1.00E+00
FBgn0033149	CG11060	14	0.19	1.86E-01	0.63	4.56E-02	0.00	1.00E+00
FBgn0039930	CG11077	321	0.68	3.96E-04	0.04	6.86E-01	0.00	1.00E+00
FBgn0030519	CG11151	1004	0.66	1.09E-04	-0.04	6.70E-01	0.00	1.00E+00
FBgn0039927	CG11155	89	-0.20	4.49E-01	0.59	1.37E-02	-0.01	1.00E+00
FBgn0030511	CG11158	89	-0.09	7.52E-01	1.15	9.94E-05	0.00	1.00E+00
FBgn0034528	CG11180	768	-1.31	7.99E-12	0.06	4.93E-01	0.00	1.00E+00
FBgn0037115	CG11249	31	-0.27	2.75E-01	0.66	1.81E-02	0.00	1.00E+00
FBgn0036334	CG11267	2756	0.80	2.32E-09	-0.01	9.69E-01	0.00	1.00E+00
FBgn0035552	CG11350	22	1.08	2.47E-03	0.01	9.10E-01	0.07	4.10E-01
FBgn0039920	CG11360	3374	-0.59	2.82E-03	0.08	3.43E-01	0.01	1.00E+00
FBgn0037181	CG11370	1620	0.27	2.29E-01	0.76	6.42E-04	0.14	1.74E-01
FBgn0031224	CG11454	503	0.73	1.74E-06	0.04	6.54E-01	0.00	1.00E+00
FBgn0037396	CG11459	40	0.02	9.37E-01	-3.59	5.30E-04	-0.36	9.07E-02
FBgn0031244	CG11601	288	-1.03	8.59E-12	0.02	8.70E-01	0.00	1.00E+00
FBgn0036196	CG11658	72	0.19	4.82E-01	0.80	4.86E-04	0.00	1.00E+00
FBgn0030311	CG11699	609	0.68	5.97E-04	0.03	7.59E-01	0.00	1.00E+00
FBgn0030292	CG11752	421	0.85	9.10E-06	-0.02	8.49E-01	0.00	1.00E+00
FBgn0037603	CG11753	305	0.71	1.85E-04	0.00	9.72E-01	0.00	1.00E+00
FBgn0031264	CG11835	652	-0.12	5.99E-01	-0.96	6.46E-07	-0.07	2.96E-01
FBgn0039299	CG11854	130	-0.09	5.51E-01	-0.89	3.53E-02	-0.01	1.00E+00
FBgn0014427	CG11899	2687	0.58	2.36E-04	-0.04	6.96E-01	-0.04	4.40E-01
FBgn0037312	CG11999	699	0.71	3.22E-04	0.09	3.31E-01	0.00	1.00E+00
FBgn0039831	CG12054	2044	-0.78	9.35E-06	-0.01	9.62E-01	0.00	1.00E+00
FBgn0030098	CG12057	41	0.04	6.75E-01	-3.13	4.56E-03	-1.77	1.09E-02
FBgn0037386	CG1208	54	3.54	4.06E-08	1.32	3.43E-03	0.00	1.00E+00
FBgn0030048	CG12112	271	-0.85	7.80E-06	0.12	1.48E-01	0.00	1.00E+00
FBgn0030097	CG12115	11	-0.08	5.01E-01	-5.99	2.31E-05	-3.05	1.15E-03
FBgn0037356	CG12170	204	0.70	6.12E-04	0.03	8.04E-01	0.01	1.00E+00
FBgn0037354	CG12171	763	1.03	5.36E-13	0.75	1.51E-13	0.00	1.00E+00
FBgn0030510	CG12177	62	0.10	7.32E-01	0.76	2.59E-03	0.00	1.00E+00
FBgn0031022	CG12204	290	1.03	3.81E-07	0.43	5.96E-03	0.01	9.42E-01
FBgn0037974	CG12224	199	-0.04	9.02E-01	2.01	3.75E-30	0.00	1.00E+00
FBgn0036514	CG12301	779	-0.59	1.10E-03	0.09	2.87E-01	0.00	1.00E+00
FBgn0038590	CG12320	383	0.61	4.18E-04	0.06	4.68E-01	0.00	1.00E+00
FBgn0033558	CG12344	18	-0.73	1.06E-02	-0.07	5.45E-01	0.00	1.00E+00
FBgn0029657	CG12535	259	-2.49	3.99E-31	0.04	6.98E-01	0.00	1.00E+00
FBgn0250830	CG12547	2267	-0.82	2.09E-21	0.05	5.86E-01	0.00	1.00E+00
FBgn0037811	CG12592	84	-5.00	3.37E-05	-0.04	6.97E-01	-0.01	1.00E+00
FBgn0037796	CG12814	1934	-0.66	1.10E-11	0.05	5.48E-01	0.03	5.19E-01
FBgn0033145	CG12828	151	0.87	1.14E-04	-0.05	6.52E-01	-0.02	8.92E-01
FBgn0033945	CG12868	154	-0.36	1.17E-01	1.52	3.95E-16	0.00	1.00E+00
FBgn0033547	CG12935	370	1.10	1.08E-10	-0.02	8.88E-01	0.00	1.00E+00
FBgn0037753	CG12947	202	-0.18	4.28E-01	-0.63	3.27E-04	0.00	1.00E+00
FBgn0035501	CG1299	414	0.26	2.45E-01	1.01	2.72E-08	0.00	1.00E+00
FBgn0030859	CG12990	39	-1.81	3.29E-05	0.02	8.45E-01	0.00	1.00E+00
FBgn0036677	CG13023	385	2.05	7.22E-11	-0.32	5.69E-02	-0.14	1.79E-01
FBgn0036670	CG13029	41	0.35	1.31E-01	2.92	1.84E-18	0.12	2.40E-01
FBgn0036605	CG13041	54	1.02	3.83E-03	-0.07	4.61E-01	-0.40	3.96E-02
FBgn0036599	CG13044	661	0.68	4.80E-03	0.05	5.92E-01	0.02	8.05E-01
FBgn0036596	CG13045	48	-0.59	2.66E-02	-0.06	5.40E-01	-0.01	1.00E+00
FBgn0036660	CG13045	470	-0.83	4.04E-09	0.18	4.71E-02	0.13	1.00E-01
FBgn0040801	CG13053	118	0.97	1.90E-03	-0.96	9.37E-03	-1.91	1.24E-04
FBgn0040796	CG13064	52	0.81	5.07E-03	0.05	6.12E-01	0.00	1.00E+00
FBgn0036589	CG13067	78	0.87	4.69E-03	0.06	5.01E-01	1.27	1.22E-05
FBgn0032803	CG13082	663	0.62	4.19E-03	-0.07	4.59E-01	0.00	1.00E+00
FBgn0032051	CG13097	1071	-0.63	3.97E-06	0.08	3.18E-01	0.00	1.00E+00
FBgn0033608	CG13220	1046	0.59	1.39E-06	0.05	5.80E-01	0.00	1.00E+00
FBgn0033781	CG13319	429	0.85	1.59E-05	0.03	7.98E-01	0.00	1.00E+00
FBgn0029531	CG13362	69	-0.74	3.92E-03	0.03	7.39E-01	-0.04	6.33E-01
FBgn0028879	CG13364	1664	0.76	6.87E-06	0.00	9.93E-01	0.00	1.00E+00
FBgn0025640	CG13369	355	0.63	8.83E-04	-0.01	9.12E-01	0.00	1.00E+00
FBgn0040658	CG13516	84	0.91	8.75E-04	-2.22	4.86E-15	-3.17	1.48E-27
FBgn0035010	CG13579	278	-0.03	8.28E-01	11.51	4.85E-23	0.00	1.00E+00
FBgn0035020	CG13585	575	0.95	4.94E-11	0.13	1.02E-01	0.02	7.52E-01
FBgn0039219	CG13630	1091	0.64	1.67E-09	0.10	1.19E-01	0.00	1.00E+00
FBgn0035859	CG13678	134	1.06	1.15E-03	0.02	8.64E-01	0.09	3.13E-01
FBgn0030539	CG1368	104	0.83	4.40E-03	-1.49	1.89E-04	-0.01	1.00E+00

FBgn0031254	CG13692	54	0.04	8.97E-01	1.31	2.65E-05	0.01	1.00E+00
FBgn0035553	CG13722	58	0.93	4.69E-03	-0.23	1.74E-01	-0.13	2.10E-01
FBgn0036382	CG13737	57	0.62	1.26E-02	0.04	6.72E-01	0.00	1.00E+00
FBgn0033340	CG13751	510	1.29	9.93E-08	0.03	7.26E-01	0.00	1.00E+00
FBgn0031834	CG13766	269	-1.05	7.32E-11	-0.06	5.06E-01	0.00	1.00E+00
FBgn0035176	CG13905	32	1.11	1.36E-03	0.01	9.54E-01	0.00	1.00E+00
FBgn0040786	CG14104	193	1.28	2.01E-07	-0.08	3.84E-01	-0.01	1.00E+00
FBgn0040817	CG14132	340	0.11	6.73E-01	-0.62	1.97E-03	-0.03	5.64E-01
FBgn0038658	CG14292	69	-1.15	1.15E-03	0.06	6.08E-01	0.00	1.00E+00
FBgn0038647	CG14302	16	-0.04	7.60E-01	-1.37	2.08E-02	-0.01	1.00E+00
FBgn0038629	CG14304	297	0.08	7.08E-01	0.62	1.63E-05	0.00	1.00E+00
FBgn0038581	CG14314	75	-0.47	5.04E-02	1.19	4.26E-05	0.00	1.00E+00
FBgn0038148	CG14377	80	-1.02	2.52E-04	-0.09	4.73E-01	-0.01	1.00E+00
FBgn0032900	CG14401	26	-0.99	2.51E-03	-0.02	8.90E-01	-0.01	1.00E+00
FBgn0030584	CG14407	427	0.78	1.12E-04	0.00	9.86E-01	0.00	1.00E+00
FBgn0029894	CG14440	648	-0.66	2.53E-05	-0.01	9.13E-01	0.00	1.00E+00
FBgn0033000	CG14464	898	-0.68	2.86E-05	0.04	7.03E-01	0.00	1.00E+00
FBgn0037127	CG14566	326	1.00	4.07E-05	-0.02	8.40E-01	0.52	1.64E-02
FBgn0037503	CG14598	331	1.24	1.79E-12	-0.18	6.31E-02	0.00	1.00E+00
FBgn0031184	CG14615	61	-0.84	2.10E-03	-0.02	8.61E-01	-0.03	6.96E-01
FBgn0037850	CG14695	97	0.09	5.32E-01	7.33	1.55E-43	0.03	7.36E-01
FBgn0037930	CG14715	686	0.87	8.24E-08	-0.03	7.95E-01	-0.01	1.00E+00
FBgn0033243	CG14763	94	-0.69	4.53E-03	-0.06	6.21E-01	0.00	1.00E+00
FBgn0038455	CG14907	184	-0.29	2.10E-01	0.97	2.91E-09	-0.13	1.54E-01
FBgn0032335	CG14915	24	0.28	2.37E-01	0.64	2.32E-02	0.02	9.05E-01
FBgn0035409	CG14963	27	0.00	9.87E-01	0.01	9.11E-01	0.69	4.79E-02
FBgn0035414	CG14965	340	-0.68	9.14E-05	-0.02	8.87E-01	0.00	1.00E+00
FBgn0035415	CG14966	318	-0.70	7.73E-05	-0.03	7.86E-01	-0.01	9.03E-01
FBgn0035469	CG14977	355	0.66	3.70E-04	0.01	9.69E-01	-0.01	1.00E+00
FBgn0035480	CG14984	277	0.75	9.39E-04	0.23	5.87E-02	0.01	1.00E+00
FBgn0034399	CG15083	584	0.79	1.63E-04	0.02	8.17E-01	0.00	1.00E+00
FBgn0032733	CG15170	18	0.02	9.12E-01	-2.23	8.48E-03	-0.18	1.79E-01
FBgn0030234	CG15211	42	0.60	2.38E-02	0.00	9.86E-01	0.01	1.00E+00
FBgn0033104	CG15237	463	0.71	3.29E-05	0.03	8.00E-01	0.00	1.00E+00
FBgn0030183	CG15309	348	-1.15	2.11E-07	0.03	7.91E-01	0.00	1.00E+00
FBgn0030029	CG15343	65	-0.08	7.69E-01	-1.24	6.05E-03	-0.01	1.00E+00
FBgn0030040	CG15347	54	4.74	6.59E-09	0.00	9.83E-01	-0.03	7.54E-01
FBgn0040718	CG15353	3826	0.82	1.11E-05	0.03	7.62E-01	0.61	2.02E-03
FBgn0031393	CG15382	81	-0.62	8.94E-03	-0.11	2.88E-01	-0.01	1.00E+00
FBgn0039828	CG1542	1295	0.67	1.31E-06	0.06	5.20E-01	-0.01	1.00E+00
FBgn0029719	CG15473	26	0.74	8.74E-03	0.00	9.77E-01	0.00	1.00E+00
FBgn0039807	CG15546	179	0.73	3.79E-04	0.75	4.93E-04	0.03	6.76E-01
FBgn0031632	CG15628	830	-0.69	6.10E-05	-0.02	8.10E-01	0.02	6.86E-01
FBgn0030309	CG1572	778	0.65	7.98E-06	-0.10	1.88E-01	0.00	1.00E+00
FBgn0029766	CG15784	8033	0.41	1.73E-02	5.32	0.00E+00	0.61	6.92E-05
FBgn0030246	CG1582	1397	0.03	8.89E-01	0.74	2.03E-15	0.01	1.00E+00
FBgn0038814	CG15923	256	-1.32	5.53E-08	0.07	5.34E-01	0.01	1.00E+00
FBgn0033191	CG1598	1089	0.60	9.56E-06	0.05	5.99E-01	0.00	1.00E+00
FBgn0039602	CG1647	659	-0.61	1.64E-05	0.03	7.46E-01	0.01	1.00E+00
FBgn0038719	CG16727	101	-13.72	9.08E-07	0.00	9.77E-01	0.00	1.00E+00
FBgn0032488	CG16812	796	-0.63	2.20E-08	0.05	5.27E-01	0.00	1.00E+00
FBgn0032495	CG16820	141	-0.22	3.58E-01	1.11	4.35E-10	-0.63	3.41E-03
FBgn0030321	CG1703	2733	-0.59	3.11E-05	0.17	5.48E-02	0.00	1.00E+00
FBgn0040496	CG17104	334	-0.16	5.23E-01	1.06	2.36E-07	0.00	1.00E+00
FBgn0036440	CG17177	11	-0.03	8.46E-01	6.67	3.10E-06	0.00	1.00E+00
FBgn0038043	CG17202	1061	0.69	2.76E-04	0.01	9.18E-01	0.00	1.00E+00
FBgn0039977	CG17454	820	-0.64	7.83E-09	0.13	4.25E-02	0.00	1.00E+00
FBgn0032997	CG17486	1168	-0.59	1.85E-06	0.00	9.88E-01	0.00	1.00E+00
FBgn0039959	CG17514	7525	-0.60	2.64E-04	0.03	7.60E-01	0.00	1.00E+00
FBgn0261387	CG17528	2579	-0.62	4.04E-09	-0.01	9.46E-01	0.00	1.00E+00
FBgn0033777	CG17574	551	0.29	8.95E-02	0.91	1.94E-17	-0.67	1.94E-08
FBgn0031597	CG17612	367	-0.72	9.48E-06	0.04	7.15E-01	0.01	1.00E+00
FBgn0263780	CG17684	127	-0.31	1.98E-01	1.48	1.26E-18	-0.11	1.79E-01
FBgn0040056	CG17698	1191	-0.96	1.17E-14	-0.06	4.28E-01	0.00	1.00E+00
FBgn0033802	CG17724	203	-1.43	3.95E-06	0.06	4.74E-01	0.00	1.00E+00
FBgn0038718	CG17752	65	-2.13	4.83E-04	0.02	8.61E-01	0.00	1.00E+00
FBgn0040899	CG17776	374	1.06	1.51E-06	0.02	8.65E-01	0.00	1.00E+00
FBgn0040005	CG17883	1756	-0.62	7.07E-07	0.09	2.41E-01	0.00	1.00E+00
FBgn0028856	CG18063	238	-0.03	8.28E-01	8.80	7.19E-73	-0.03	7.66E-01
FBgn0038470	CG18213	611	-0.08	7.21E-01	0.82	1.62E-08	0.00	1.00E+00
FBgn0033431	CG1827	277	1.05	3.97E-06	-0.04	6.56E-01	0.00	1.00E+00
FBgn0030351	CG1840	156	-0.65	5.29E-03	-0.01	9.48E-01	0.00	1.00E+00
FBgn0037973	CG18547	919	0.26	1.35E-01	1.90	8.11E-70	-0.01	1.00E+00
FBgn0031929	CG18585	13	-0.02	8.82E-01	-1.09	2.80E-02	-0.09	3.38E-01
FBgn0033421	CG1888	455	0.63	3.47E-04	0.01	9.03E-01	0.00	1.00E+00
FBgn0039911	CG1909	92	0.51	4.75E-02	3.31	4.98E-37	0.04	5.75E-01
FBgn0022349	CG1910	5653	-0.77	1.49E-09	-0.01	9.26E-01	0.00	1.00E+00
FBgn0039881	CG1971	10	-0.03	9.12E-01	0.70	3.73E-02	0.00	1.00E+00
FBgn0039886	CG2003	66	0.01	9.87E-01	-0.65	4.84E-03	-0.09	2.74E-01

FBgn0039664	CG2006	513	0.76	3.00E-05	0.01	9.46E-01	0.00	1.00E+00
FBgn0035271	CG2021	304	0.65	5.50E-04	0.02	8.14E-01	0.00	1.00E+00
FBgn0033205	CG2064	103	-0.13	6.35E-01	1.83	2.35E-21	0.00	1.00E+00
FBgn0017448	CG2187	56	0.76	7.19E-03	1.48	2.14E-05	1.25	4.85E-04
FBgn0030447	CG2200	465	0.66	5.82E-05	-0.04	7.06E-01	-0.01	1.00E+00
FBgn0039665	CG2310	1991	0.82	6.19E-05	0.02	8.88E-01	0.00	1.00E+00
FBgn0034931	CG2812	789	0.77	1.36E-07	0.55	9.49E-07	0.52	2.63E-05
FBgn0023526	CG2865	935	-0.93	1.42E-06	0.02	8.50E-01	0.01	1.00E+00
FBgn0029679	CG2901	32	1.17	2.64E-03	0.06	5.87E-01	-0.01	1.00E+00
FBgn0030189	CG2909	129	0.00	9.91E-01	1.71	1.07E-19	0.01	1.00E+00
FBgn0023528	CG2924	2315	-0.73	1.93E-12	-0.05	5.33E-01	0.00	1.00E+00
FBgn0031643	CG3008	1831	-0.27	1.20E-02	1.75	8.62E-147	0.01	9.62E-01
FBgn0050187	CG30187	266	-0.12	6.49E-01	1.68	1.49E-24	0.00	1.00E+00
FBgn0050196	CG30196	60	0.19	2.15E-01	2.12	1.75E-11	0.08	3.26E-01
FBgn0050197	CG30197	45	0.25	3.20E-01	-2.87	5.43E-10	0.00	1.00E+00
FBgn0031645	CG3036	831	0.87	2.51E-06	0.65	6.15E-05	-0.01	8.88E-01
FBgn0050424	CG30424	15	-0.20	3.78E-01	-1.39	6.47E-03	-0.01	1.00E+00
FBgn0050428	CG30428	190	-0.09	7.38E-01	0.65	6.52E-04	0.86	1.95E-05
FBgn0050440	CG30440	2603	-0.80	1.00E-14	-0.07	3.70E-01	0.00	1.00E+00
FBgn0034816	CG3085	164	0.45	2.53E-02	0.73	1.11E-06	0.00	1.00E+00
FBgn0051030	CG31030	110	-0.64	1.41E-02	-0.16	1.63E-01	0.00	1.00E+00
FBgn0051055	CG31055	196	0.70	1.15E-03	-0.04	7.60E-01	0.00	1.00E+00
FBgn0033005	CG3107	2743	-0.71	1.56E-07	-0.01	9.10E-01	0.00	1.00E+00
FBgn0051076	CG31076	39	0.06	8.28E-01	-0.05	5.92E-01	-2.80	1.70E-05
FBgn0051126	CG31126	212	0.76	3.03E-04	0.02	8.97E-01	0.00	1.00E+00
FBgn0047114	CG31142	452	0.13	5.07E-01	0.59	2.76E-05	-0.01	9.42E-01
FBgn0051156	CG31156	386	-0.80	1.01E-06	0.03	7.46E-01	0.00	1.00E+00
FBgn0051157	CG31157	19	4.04	1.52E-04	0.08	5.01E-01	0.01	1.00E+00
FBgn0051391	CG31391	23	-0.69	1.21E-02	0.00	9.88E-01	0.00	1.00E+00
FBgn0051431	CG31431	21	-0.13	5.83E-01	-0.81	2.70E-02	0.00	1.00E+00
FBgn0051467	CG31467	117	-0.64	7.42E-03	0.00	9.83E-01	0.00	1.00E+00
FBgn0051510	CG31510	942	-1.10	4.98E-15	-0.09	2.64E-01	0.00	1.00E+00
FBgn0051548	CG31548	553	0.68	1.35E-05	0.02	8.45E-01	0.00	1.00E+00
FBgn0051549	CG31549	582	0.18	2.97E-01	0.93	1.89E-23	0.00	1.00E+00
FBgn0051559	CG31559	89	0.07	8.26E-01	-0.59	2.16E-02	-0.02	8.81E-01
FBgn0051633	CG31633	109	0.66	6.96E-03	0.14	1.73E-01	0.01	1.00E+00
FBgn0029896	CG3168	768	0.19	4.55E-01	1.17	3.76E-06	0.00	1.00E+00
FBgn0051898	CG31898	120	-0.71	1.78E-03	0.04	7.04E-01	0.01	1.00E+00
FBgn0031360	CG31937	567	0.78	1.14E-07	0.01	9.51E-01	0.00	1.00E+00
FBgn0051955	CG31955	41	0.02	9.57E-01	-0.16	2.03E-01	-1.28	1.29E-03
FBgn0051997	CG31997	2776	0.64	9.55E-06	0.08	3.37E-01	-0.14	9.82E-02
FBgn0051998	CG31998	3283	-0.73	1.38E-04	0.00	9.83E-01	0.01	1.00E+00
FBgn0051999	CG31999	642	0.48	4.40E-04	0.94	7.82E-23	-0.52	3.45E-06
FBgn0052017	CG32017	50	-0.13	6.30E-01	1.88	8.72E-06	0.03	6.95E-01
FBgn0052055	CG32055	76	0.88	1.45E-03	-1.68	1.85E-07	-2.31	1.15E-12
FBgn0052069	CG32069	283	0.66	8.71E-04	0.00	9.89E-01	-0.01	1.00E+00
FBgn0052095	CG32095	635	-0.64	3.32E-07	0.01	9.67E-01	0.00	1.00E+00
FBgn0052163	CG32163	213	0.66	1.33E-03	0.01	9.06E-01	0.00	1.00E+00
FBgn0052176	CG32176	526	-0.83	1.30E-07	0.02	8.39E-01	0.00	1.00E+00
FBgn0052243	CG32243	1236	-0.76	1.70E-15	0.01	9.47E-01	-0.01	1.00E+00
FBgn0052354	CG32354	120	0.18	4.83E-01	0.68	4.05E-03	0.73	5.80E-03
FBgn0041706	CG3253	101	0.07	8.05E-01	1.71	4.60E-19	-0.01	9.62E-01
FBgn0052532	CG32532	10	-0.17	4.17E-01	5.19	1.02E-04	4.29	1.22E-03
FBgn0052544	CG32544	30	-0.69	1.34E-02	0.00	9.85E-01	-0.01	1.00E+00
FBgn0052549	CG32549	668	0.19	4.29E-01	1.12	1.39E-07	-0.02	8.49E-01
FBgn0032986	CG3262	1798	-0.61	1.50E-16	0.23	1.11E-05	0.02	5.82E-01
FBgn0052625	CG32625	10	-0.04	8.29E-01	2.22	9.92E-04	0.00	1.00E+00
FBgn0052694	CG32694	95	0.22	3.56E-01	-0.84	2.94E-04	0.00	1.00E+00
FBgn0052850	CG32850	772	-1.46	4.07E-37	0.05	5.76E-01	0.00	1.00E+00
FBgn0053225	CG33225	21	0.60	1.61E-02	0.15	2.63E-01	0.00	1.00E+00
FBgn0053281	CG33281	14	-10.96	7.84E-06	0.05	6.42E-01	0.01	1.00E+00
FBgn0053509	CG33509	743	-0.64	6.34E-04	1.82	4.17E-46	0.19	6.27E-02
FBgn0031619	CG3355	63	0.66	1.35E-02	-0.04	6.88E-01	0.00	1.00E+00
FBgn0052831	CG33695	761	0.62	7.88E-05	-0.02	8.24E-01	0.00	1.00E+00
FBgn0262731	CG33941	610	-1.36	5.20E-10	0.05	5.38E-01	0.00	1.00E+00
FBgn0053978	CG33978	6959	-0.69	2.06E-04	0.11	2.26E-01	0.04	4.82E-01
FBgn0085192	CG34163	279	-0.70	1.49E-03	0.00	9.76E-01	0.00	1.00E+00
FBgn0033100	CG3420	534	0.60	6.60E-04	0.03	8.04E-01	0.00	1.00E+00
FBgn0085236	CG34207	212	-0.84	3.04E-05	-0.02	8.28E-01	0.00	1.00E+00
FBgn0085276	CG34247	87	4.23	8.81E-18	0.05	5.80E-01	-1.88	7.16E-04
FBgn0085411	CG34382	59	0.85	1.89E-03	-1.48	1.98E-05	-1.22	2.36E-04
FBgn0085452	CG34423	18	0.32	1.61E-01	-0.96	1.15E-02	-1.98	2.34E-04
FBgn0035996	CG3448	164	-0.30	1.51E-01	1.45	4.49E-18	-0.01	1.00E+00
FBgn0024984	CG3457	47	1.34	1.07E-04	1.75	3.05E-08	0.00	1.00E+00
FBgn0035007	CG3492	22	-0.03	8.41E-01	7.08	6.14E-09	-0.01	1.00E+00
FBgn0035008	CG3494	13	0.00	1.00E+00	7.85	3.38E-08	0.00	1.00E+00
FBgn0034849	CG3500	293	0.62	1.41E-03	0.01	9.05E-01	0.00	1.00E+00
FBgn0035063	CG3594	504	0.59	1.16E-03	0.06	4.53E-01	0.00	1.00E+00
FBgn0029824	CG3726	143	0.27	2.31E-01	0.78	5.21E-05	0.03	5.79E-01

FBgn0035085	CG3770	365	0.18	3.02E-01	-0.79	4.13E-11	-0.03	5.47E-01
FBgn0036422	CG3868	17	-0.06	6.16E-01	-1.60	1.44E-02	-0.28	1.22E-01
FBgn0058160	CG40160	3127	-0.80	2.78E-16	-0.05	5.08E-01	-0.01	9.40E-01
FBgn0058191	CG40191	1684	-0.60	5.47E-08	-0.06	4.68E-01	0.00	1.00E+00
FBgn0035986	CG4022	1651	-0.83	7.91E-10	-0.06	4.64E-01	-0.01	9.41E-01
FBgn0063670	CG40228	993	-1.01	2.80E-10	0.02	8.24E-01	0.00	1.00E+00
FBgn0039955	CG41099	2624	-0.75	2.20E-08	-0.07	4.01E-01	0.00	1.00E+00
FBgn0087011	CG41520	382	-0.08	7.78E-01	0.72	3.67E-04	-0.02	7.95E-01
FBgn0038302	CG4210	304	0.06	8.08E-01	0.84	6.58E-11	0.01	9.40E-01
FBgn0250862	CG42237	12	-0.60	2.25E-02	-0.05	6.20E-01	0.00	1.00E+00
FBgn0259143	CG42258	765	-1.18	1.27E-20	0.02	8.81E-01	0.00	1.00E+00
FBgn0266569	CG42259	221	-0.77	2.05E-03	0.02	8.22E-01	0.00	1.00E+00
FBgn0259222	CG42322	26	-0.66	1.61E-02	0.03	8.02E-01	0.01	1.00E+00
FBgn0259742	CG42360	459	-0.79	9.71E-08	0.07	4.15E-01	0.00	1.00E+00
FBgn0259711	CG42365	141	-0.21	3.83E-01	1.18	2.56E-11	0.00	1.00E+00
FBgn0034761	CG4250	49	0.70	1.17E-02	0.09	3.74E-01	0.01	1.00E+00
FBgn0260768	CG42566	16	0.14	5.66E-01	-1.69	2.81E-03	-0.84	1.90E-02
FBgn0034741	CG4269	32	-1.33	1.99E-03	-0.02	8.60E-01	0.01	1.00E+00
FBgn0261584	CG42694	19	-0.16	5.02E-01	-0.86	2.34E-02	0.00	1.00E+00
FBgn0261641	CG42724	4450	-0.87	2.78E-09	0.02	8.50E-01	0.00	1.00E+00
FBgn0261995	CG42813	479	0.60	7.35E-04	0.01	9.46E-01	0.00	1.00E+00
FBgn0034742	CG4294	1630	-0.72	3.08E-08	0.18	3.61E-02	0.02	7.92E-01
FBgn0038784	CG4362	57	0.04	8.38E-01	-1.24	1.81E-02	-0.59	5.15E-02
FBgn0263993	CG43736	3291	-0.60	2.45E-04	-0.03	7.64E-01	0.00	1.00E+00
FBgn0032132	CG4382	1610	1.20	1.55E-11	-0.43	3.97E-03	-0.64	3.44E-04
FBgn0038771	CG4390	2352	0.60	4.28E-06	-0.01	9.12E-01	-0.01	1.00E+00
FBgn0264748	CG44006	16	-0.19	3.72E-01	0.85	1.86E-02	0.00	1.00E+00
FBgn0264911	CG44102	35	0.02	9.40E-01	2.66	5.21E-15	0.00	1.00E+00
FBgn0265413	CG44325	1479	0.60	1.75E-04	-0.03	7.71E-01	0.00	1.00E+00
FBgn0266101	CG44838	1266	-0.58	3.40E-05	0.00	9.80E-01	0.00	1.00E+00
FBgn0031896	CG4502	1190	-0.65	9.37E-07	-0.07	3.45E-01	0.00	1.00E+00
FBgn0266410	CG45050	4461	-1.41	2.07E-17	0.01	9.46E-01	0.00	1.00E+00
FBgn0035006	CG4563	11	-0.02	8.74E-01	0.61	6.06E-02	0.00	1.00E+00
FBgn0037844	CG4570	35	1.56	1.77E-04	0.00	9.85E-01	0.01	1.00E+00
FBgn0035016	CG4612	3093	-1.01	2.21E-13	-0.03	7.29E-01	0.00	1.00E+00
FBgn0031299	CG4629	51	-0.05	8.82E-01	0.67	2.58E-02	0.00	1.00E+00
FBgn0030776	CG4653	10	-0.02	8.87E-01	-1.22	2.33E-02	-0.09	3.33E-01
FBgn0038739	CG4686	1110	0.67	8.46E-09	-0.08	2.57E-01	0.00	1.00E+00
FBgn0037992	CG4702	49	0.17	5.07E-01	-1.32	4.95E-04	-0.36	5.98E-02
FBgn0033820	CG4716	80	0.10	4.21E-01	-2.55	6.25E-03	0.02	9.19E-01
FBgn0030790	CG4768	1064	-0.63	3.80E-07	-0.05	5.59E-01	0.00	1.00E+00
FBgn0030792	CG4789	1285	0.59	2.29E-05	-0.02	8.66E-01	0.00	1.00E+00
FBgn0039013	CG4813	494	0.59	4.01E-05	-0.03	8.17E-01	0.01	1.00E+00
FBgn0037999	CG4860	453	0.67	2.87E-04	-0.04	7.15E-01	0.00	1.00E+00
FBgn0030803	CG4880	886	-0.73	1.11E-10	-0.08	2.48E-01	0.00	1.00E+00
FBgn0035959	CG4911	926	-0.72	6.09E-06	0.00	9.75E-01	0.00	1.00E+00
FBgn0036587	CG4950	63	-0.37	1.42E-01	-0.05	5.76E-01	-1.06	3.07E-03
FBgn0036579	CG5027	367	0.81	2.00E-08	-0.02	8.81E-01	-0.01	1.00E+00
FBgn0036576	CG5151	885	-0.67	4.99E-04	-0.08	3.45E-01	0.00	1.00E+00
FBgn0038943	CG5391	400	-0.78	3.04E-03	3.62	7.63E-72	0.01	9.15E-01
FBgn0032429	CG5446	1410	0.62	1.05E-06	0.00	9.99E-01	0.00	1.00E+00
FBgn0039430	CG5455	141	-0.01	9.85E-01	-0.87	5.09E-05	-2.03	7.80E-21
FBgn0036760	CG5567	232	0.60	1.79E-03	0.46	6.67E-04	0.03	4.91E-01
FBgn0036975	CG5618	404	0.94	3.40E-05	-0.02	8.64E-01	0.00	1.00E+00
FBgn0036254	CG5645	551	-1.20	2.36E-10	0.36	8.57E-03	0.01	9.37E-01
FBgn0037082	CG5664	538	-0.61	3.00E-05	0.46	6.71E-05	0.01	1.00E+00
FBgn0032171	CG5846	201	0.69	1.24E-03	0.03	7.79E-01	0.00	1.00E+00
FBgn0025700	CG5885	3676	0.60	7.64E-10	-0.05	5.96E-01	-0.01	1.00E+00
FBgn0038400	CG5903	2203	0.58	1.78E-07	0.13	7.05E-02	0.00	1.00E+00
FBgn0036997	CG5955	8	-0.23	1.55E-01	3.40	5.82E-05	-0.01	1.00E+00
FBgn0034725	CG6044	626	0.16	3.62E-01	0.96	1.39E-17	-0.01	1.00E+00
FBgn0031918	CG6055	37	0.14	5.96E-01	-1.12	5.37E-03	-0.01	1.00E+00
FBgn0036186	CG6071	137	-0.03	9.16E-01	0.73	1.03E-03	0.83	7.55E-04
FBgn0032453	CG6180	4013	0.63	5.57E-09	-0.03	8.04E-01	0.00	1.00E+00
FBgn0032343	CG6201	37	-0.25	3.33E-01	-0.81	1.07E-02	-0.01	1.00E+00
FBgn0038321	CG6218	206	-0.62	1.72E-03	-0.04	6.35E-01	-0.02	7.96E-01
FBgn0033866	CG6280	188	-0.32	9.19E-02	-0.99	2.70E-08	-0.01	1.00E+00
FBgn0037807	CG6293	15	-0.15	5.13E-01	-1.83	4.48E-03	-0.02	7.77E-01
FBgn0036121	CG6310	302	0.31	1.04E-01	-0.53	1.07E-04	-1.17	6.76E-19
FBgn0039464	CG6330	158	0.41	8.87E-02	0.88	6.45E-04	-0.20	1.22E-01
FBgn0033875	CG6357	463	-0.71	3.51E-04	-1.63	2.20E-19	0.00	1.00E+00
FBgn0029690	CG6414	96	0.63	1.99E-02	-1.28	1.82E-03	0.00	1.00E+00
FBgn0036702	CG6512	2297	0.13	2.43E-01	0.63	1.96E-19	0.01	8.51E-01
FBgn0032388	CG6686	1995	-0.61	1.94E-05	0.22	2.61E-02	0.00	1.00E+00
FBgn0032305	CG6700	2874	-0.81	6.27E-07	0.50	5.82E-01	0.00	1.00E+00
FBgn0037915	CG6790	9	0.18	2.26E-01	3.70	8.75E-06	0.00	1.00E+00
FBgn0038290	CG6912	99	-5.89	1.77E-07	4.27	3.46E-14	4.50	3.37E-15
FBgn0036240	CG6928	2325	-0.21	2.85E-01	3.92	1.78E-156	2.87	1.32E-82
FBgn0038972	CG7054	111	-0.57	2.87E-02	2.11	1.30E-26	0.33	4.67E-02

FBgn0038941	CG7080	40	0.15	4.58E-01	4.03	3.25E-20	0.00	1.00E+00
FBgn0037099	CG7173	192	0.15	5.00E-01	-0.65	5.38E-04	-0.52	8.92E-03
FBgn0035861	CG7213	27	0.29	2.45E-01	7.51	2.14E-09	0.00	1.00E+00
FBgn0031976	CG7367	156	-0.70	2.69E-03	-0.17	1.49E-01	-0.02	7.39E-01
FBgn0037135	CG7414	11131	0.59	7.82E-19	0.01	9.52E-01	0.00	1.00E+00
FBgn0035833	CG7565	175	-0.69	2.66E-03	-2.28	1.43E-19	-0.04	5.16E-01
FBgn0040793	CG7630	1562	1.04	1.98E-14	0.05	5.86E-01	0.00	1.00E+00
FBgn0033548	CG7637	973	1.92	5.72E-24	0.02	8.99E-01	0.00	1.00E+00
FBgn0036926	CG7646	134	-1.04	3.22E-05	0.02	8.47E-01	0.00	1.00E+00
FBgn0036929	CG7668	1484	-0.86	1.89E-13	-0.02	8.26E-01	-0.01	9.40E-01
FBgn0038619	CG7685	164	0.63	6.57E-03	0.04	6.43E-01	0.00	1.00E+00
FBgn0036714	CG7692	656	-0.87	8.80E-12	0.04	6.82E-01	0.03	5.49E-01
FBgn0038509	CG7739	1153	-0.64	3.23E-11	-0.05	6.08E-01	-0.01	1.00E+00
FBgn0036124	CG7839	1429	-0.80	6.12E-07	0.09	2.63E-01	0.00	1.00E+00
FBgn0037548	CG7900	41	4.55	2.26E-05	2.11	6.72E-04	0.00	1.00E+00
FBgn0028534	CG7916	16	0.13	3.16E-01	0.04	7.30E-01	-1.26	2.16E-02
FBgn0039737	CG7920	3784	0.65	1.36E-09	-0.26	2.06E-03	0.00	1.00E+00
FBgn0028533	CG7953	31	-0.07	5.70E-01	-3.18	4.57E-04	-0.52	5.46E-02
FBgn0038115	CG7966	139	0.86	3.03E-03	-0.07	4.85E-01	0.01	1.00E+00
FBgn0035260	CG7991	93	0.16	5.45E-01	-1.20	1.07E-04	0.01	1.00E+00
FBgn0037612	CG8112	68	0.33	1.87E-01	-0.92	1.04E-02	-0.03	7.02E-01
FBgn0034010	CG8157	91	0.13	5.33E-01	-3.51	4.35E-08	0.00	1.00E+00
FBgn0034011	CG8160	19	0.19	1.39E-01	-0.66	5.32E-02	0.00	1.00E+00
FBgn0034030	CG8192	167	0.76	5.57E-04	-0.26	6.59E-02	0.00	1.00E+00
FBgn0034033	CG8204	166	0.65	4.51E-03	0.01	9.09E-01	0.00	1.00E+00
FBgn0034143	CG8303	208	0.46	3.10E-02	0.69	2.01E-04	0.00	1.00E+00
FBgn0032001	CG8360	132	0.71	2.84E-03	0.03	7.61E-01	0.00	1.00E+00
FBgn0034067	CG8399	2181	0.73	4.88E-15	0.00	9.75E-01	0.00	1.00E+00
FBgn0037754	CG8500	73	-0.69	8.60E-03	-1.78	1.52E-04	-0.03	6.54E-01
FBgn0035791	CG8539	9	-0.06	7.27E-01	0.83	2.63E-02	0.00	1.00E+00
FBgn0035714	CG8549	532	-0.44	1.74E-02	0.60	6.84E-05	0.00	1.00E+00
FBgn0036386	CG8833	390	-0.60	2.98E-04	0.03	8.06E-01	0.01	9.13E-01
FBgn0038404	CG8925	35	-0.18	4.46E-01	0.59	3.32E-02	0.00	1.00E+00
FBgn0038405	CG8927	52	-0.12	6.41E-01	2.02	1.81E-04	0.74	2.16E-02
FBgn0028920	CG8997	28	-0.10	5.51E-01	-5.54	2.35E-06	-0.77	3.60E-02
FBgn0040931	CG9034	454	1.08	6.35E-06	0.05	5.91E-01	0.00	1.00E+00
FBgn0030610	CG9065	223	1.09	7.84E-06	0.38	2.24E-02	0.00	1.00E+00
FBgn0030716	CG9170	1167	0.00	9.77E-01	0.67	9.06E-26	0.01	9.27E-01
FBgn0035181	CG9205	889	1.09	7.19E-17	0.07	3.38E-01	0.00	1.00E+00
FBgn0030669	CG9240	519	0.58	4.27E-05	0.07	3.97E-01	0.00	1.00E+00
FBgn0032925	CG9246	1988	-0.61	5.99E-06	0.06	4.73E-01	0.00	1.00E+00
FBgn0038179	CG9312	150	0.53	2.53E-02	-0.70	4.84E-03	-0.21	1.14E-01
FBgn0032889	CG9331	2348	0.64	4.33E-13	-0.05	5.25E-01	-0.07	1.62E-01
FBgn0032897	CG9336	285	1.72	2.22E-08	-0.01	8.95E-01	0.01	1.00E+00
FBgn0032899	CG9338	208	1.66	1.58E-07	-0.12	2.34E-01	0.00	1.00E+00
FBgn0030569	CG9411	168	-0.21	4.11E-01	0.90	2.91E-04	0.00	1.00E+00
FBgn0037721	CG9427	1394	0.88	9.72E-07	0.00	9.73E-01	0.00	1.00E+00
FBgn0037749	CG9471	643	0.73	3.50E-06	0.10	2.20E-01	0.00	1.00E+00
FBgn0030588	CG9521	33	-0.09	7.33E-01	1.59	1.95E-04	0.33	7.06E-02
FBgn0031824	CG9547	243	0.77	3.20E-04	0.04	7.14E-01	0.00	1.00E+00
FBgn0034184	CG9646	708	-0.15	4.09E-01	0.62	8.27E-08	0.00	1.00E+00
FBgn0029939	CG9650	337	-0.32	1.09E-01	-0.61	9.83E-04	0.00	1.00E+00
FBgn0030160	CG9691	853	0.65	4.41E-04	0.03	7.54E-01	-0.01	1.00E+00
FBgn0039754	CG9747	717	1.09	4.41E-12	-0.51	1.11E-04	-0.01	1.00E+00
FBgn0024248	chico	1054	-0.76	1.68E-13	-0.08	2.97E-01	0.01	1.00E+00
FBgn0000307	chif	2908	-0.58	8.33E-04	0.04	6.23E-01	0.00	1.00E+00
FBgn0086758	chinmo	519	0.32	1.69E-01	0.72	1.56E-03	0.35	4.97E-02
FBgn0045761	CHKov1	1347	-0.44	8.28E-04	0.59	8.77E-09	0.00	1.00E+00
FBgn0039328	CHKov2	325	-0.17	4.44E-01	1.30	1.30E-01	0.00	1.00E+00
FBgn0028387	chm	727	-0.61	1.26E-07	-0.03	7.48E-01	0.00	1.00E+00
FBgn0035589	CHMP2B	224	0.81	1.72E-04	0.03	7.93E-01	0.00	1.00E+00
FBgn0043002	Chrac-14	373	0.65	1.59E-03	0.07	4.13E-01	0.00	1.00E+00
FBgn0036165	chrB	3380	-0.90	1.39E-05	-0.05	5.80E-01	-0.01	1.00E+00
FBgn0022702	ChT2	3503	0.66	5.55E-09	-0.06	4.38E-01	-0.01	8.73E-01
FBgn0038180	ChT5	1359	0.60	1.59E-03	0.04	6.63E-01	0.00	1.00E+00
FBgn0035398	ChT7	1066	0.58	3.91E-03	-0.05	5.99E-01	0.01	9.27E-01
FBgn0004859	ci	8944	-1.01	3.99E-10	-0.05	5.37E-01	0.00	1.00E+00
FBgn0001977	CIAPIN1	1526	0.20	1.04E-01	0.71	1.61E-18	0.00	1.00E+00
FBgn0026084	cib	15779	-0.64	2.76E-06	0.06	4.84E-01	-0.01	1.00E+00
FBgn0015024	Ckl1alpha	6805	-1.20	3.97E-18	-0.03	7.82E-01	0.00	1.00E+00
FBgn0000259	Ckl1beta	4366	-0.71	2.16E-16	0.01	9.62E-01	0.00	1.00E+00
FBgn0000318	cl	1966	1.07	9.57E-13	0.11	1.85E-01	-0.01	1.00E+00
FBgn0052251	Claspin	1098	-0.97	1.62E-05	0.02	8.37E-01	0.00	1.00E+00
FBgn0259152	Clbn	1163	-0.65	2.13E-07	0.52	2.71E-08	0.00	1.00E+00
FBgn0020503	CLIP-190	1351	-0.94	5.34E-09	0.01	9.54E-01	0.00	1.00E+00
FBgn0035767	Cln7	1086	0.63	1.01E-04	-0.09	2.90E-01	0.00	1.00E+00
FBgn0026255	clumsy	768	-0.05	8.43E-01	1.88	6.29E-37	0.10	1.79E-01
FBgn0034802	CNBP	42330	-0.99	2.65E-17	0.03	7.85E-01	0.00	1.00E+00
FBgn0264077	Cnx14D	13	0.08	7.33E-01	6.73	7.83E-07	0.00	1.00E+00

FBgn0010105	comm	299	0.84	5.61E-06	-0.03	7.35E-01	0.00	1.00E+00
FBgn0039994	conu	1969	-0.92	1.92E-15	0.03	7.39E-01	0.00	1.00E+00
FBgn0033192	Corin	24	-0.10	7.04E-01	-1.49	7.09E-03	0.00	1.00E+00
FBgn0030028	Corp	23	0.18	4.74E-01	0.74	1.54E-02	-0.01	1.00E+00
FBgn0032833	COX4	2941	0.86	5.76E-08	0.12	1.56E-01	0.00	1.00E+00
FBgn0019624	COX5A	2606	1.17	1.83E-09	0.05	5.56E-01	0.00	1.00E+00
FBgn0031830	COX5B	1591	0.59	1.91E-06	0.00	9.88E-01	-0.02	7.52E-01
FBgn0031066	COX6B	2997	0.78	3.12E-11	-0.06	5.05E-01	-0.01	1.00E+00
FBgn0040529	COX7A	3160	1.11	4.94E-14	-0.01	9.48E-01	0.00	1.00E+00
FBgn0263911	COX8	1195	0.59	1.97E-04	0.02	8.62E-01	0.00	1.00E+00
FBgn0053302	Cpr31A	46	1.71	3.35E-06	0.02	8.71E-01	0.00	1.00E+00
FBgn0028871	Cpr35B	60	1.28	2.13E-04	0.00	9.89E-01	-0.01	1.00E+00
FBgn0033598	Cpr47Eb	67	1.16	1.59E-03	0.05	6.06E-01	0.00	1.00E+00
FBgn0033602	Cpr47Ee	24	-0.03	8.88E-01	-1.69	4.84E-03	0.00	1.00E+00
FBgn0033730	Cpr49Ag	381	0.92	1.89E-07	-0.07	3.83E-01	0.00	1.00E+00
FBgn0033731	Cpr49Ah	539	0.81	1.36E-03	1.02	1.13E-04	0.16	1.61E-01
FBgn0033942	Cpr51A	266	0.96	8.10E-05	-0.51	9.48E-03	0.00	1.00E+00
FBgn0034499	Cpr56F	33	-0.17	4.91E-01	-2.07	2.64E-04	-0.01	1.00E+00
FBgn0035737	Cpr65Ec	171	0.83	1.01E-03	-0.33	4.57E-02	-0.21	1.14E-01
FBgn0052029	Cpr66D	478	1.87	5.31E-25	-0.03	8.00E-01	0.00	1.00E+00
FBgn0036109	Cpr67Fa2	86	0.27	2.67E-01	-0.09	3.18E-01	-0.66	5.64E-03
FBgn0036617	Cpr72Ea	13	0.83	6.43E-03	0.03	7.54E-01	0.00	1.00E+00
FBgn0037114	Cpr78E	355	0.71	9.83E-03	-0.59	2.57E-02	-0.02	8.40E-01
FBgn0042701	CR12628	15	0.32	1.58E-01	1.70	3.97E-03	0.03	7.10E-01
FBgn0040928	CR15345	118	-0.66	4.31E-03	0.00	9.77E-01	0.00	1.00E+00
FBgn0262532	CR43086	36	0.01	9.46E-01	5.51	5.98E-22	3.08	3.23E-06
FBgn0263093	CR43361	426	-0.03	8.89E-01	-1.74	1.53E-30	0.00	1.00E+00
FBgn0263744	CR43669	21	-0.86	5.34E-03	0.04	7.25E-01	0.00	1.00E+00
FBgn0035636	Cralbp	80	0.73	3.28E-03	-0.10	3.25E-01	0.00	1.00E+00
FBgn0004396	CrebA	1973	-0.77	1.03E-05	0.00	9.83E-01	0.00	1.00E+00
FBgn0023023	CRMP	259	-0.13	5.66E-01	-1.04	7.11E-10	0.00	1.00E+00
FBgn0015924	crq	883	-0.78	1.85E-12	-0.06	4.91E-01	0.00	1.00E+00
FBgn0036746	Crtc	1137	-0.88	5.35E-06	0.04	7.12E-01	0.00	1.00E+00
FBgn0000384	cta	945	-0.64	6.04E-04	0.02	8.88E-01	0.00	1.00E+00
FBgn0062412	Ctr1B	34	0.02	8.78E-01	-0.82	3.92E-02	-0.07	4.03E-01
FBgn0260932	cuff	181	-0.59	9.91E-04	0.34	1.92E-02	0.00	1.00E+00
FBgn0032956	Cul2	6827	-0.48	5.97E-05	3.49	0.00E+00	0.01	1.00E+00
FBgn0261268	Cul3	3133	-0.62	1.96E-10	-0.02	9.07E-01	0.00	1.00E+00
FBgn0035880	Culd	2104	-0.15	5.49E-01	3.94	7.19E-150	5.04	1.82E-247
FBgn0031689	Cyp28d1	91	1.86	1.03E-03	-0.16	2.56E-01	0.00	1.00E+00
FBgn0001992	Cyp303a1	68	-0.99	1.46E-03	0.02	8.88E-01	0.02	9.40E-01
FBgn0034756	Cyp6d2	381	0.01	9.79E-01	4.75	2.83E-216	0.02	7.02E-01
FBgn0039006	Cyp6d4	137	0.36	1.38E-01	1.42	6.67E-10	0.00	1.00E+00
FBgn0025454	Cyp6g1	147	0.24	3.07E-01	-1.83	1.59E-04	-0.01	1.00E+00
FBgn0031126	Cyp6v1	1037	-1.19	1.46E-27	-0.18	5.37E-03	0.00	1.00E+00
FBgn0000411	D	14	0.19	2.73E-01	-0.62	4.04E-02	0.01	1.00E+00
FBgn0005677	dac	806	-0.13	4.87E-01	-0.95	7.73E-13	0.03	5.06E-01
FBgn0263852	Dad1	1589	1.13	4.02E-14	0.00	9.86E-01	-0.01	1.00E+00
FBgn0263930	dally	6391	-0.67	2.37E-07	0.06	4.68E-01	0.00	1.00E+00
FBgn0262636	datl	43	-0.07	7.98E-01	3.80	3.07E-10	5.11	4.48E-18
FBgn0031820	Daxx	2065	-0.59	3.50E-06	-0.02	8.83E-01	0.01	1.00E+00
FBgn0067779	dbr	1696	-0.84	1.08E-11	0.01	9.73E-01	0.00	1.00E+00
FBgn0002413	dco	3330	-0.72	1.41E-14	-0.01	9.24E-01	0.00	1.00E+00
FBgn0036534	DCCP2	6445	-0.99	5.36E-08	0.03	7.18E-01	0.00	1.00E+00
FBgn0029067	Dd	965	-0.87	1.81E-10	-0.02	8.60E-01	0.00	1.00E+00
FBgn0086251	del	642	-0.93	2.75E-08	-0.05	5.91E-01	0.00	1.00E+00
FBgn0267972	Der-1	1024	0.64	1.65E-07	0.03	7.60E-01	0.00	1.00E+00
FBgn0022893	Df31	48354	-0.63	6.61E-10	0.02	8.64E-01	0.00	1.00E+00
FBgn0013812	Dhc93AB	47	-0.10	7.32E-01	0.83	4.04E-03	0.00	1.00E+00
FBgn0000449	dib	86	-0.60	1.66E-02	-1.67	3.76E-06	-0.04	5.19E-01
FBgn0011274	Dif	323	-0.45	3.54E-02	2.57	3.24E-38	0.00	1.00E+00
FBgn0000459	disco	168	-0.02	9.57E-01	-0.73	2.21E-03	0.02	8.78E-01
FBgn0285879	disco-r	318	0.11	6.79E-01	-1.45	2.90E-11	0.04	4.80E-01
FBgn0263106	DnaJ-1	4644	0.13	5.57E-01	-0.72	2.47E-05	0.00	1.00E+00
FBgn0286075	DNAIlg3	384	-0.23	1.73E-01	0.73	5.92E-14	0.00	1.00E+00
FBgn0030506	DNAIlg4	262	-0.19	3.68E-01	0.74	2.66E-08	0.00	1.00E+00
FBgn0002891	DNApol-zeta	1022	-0.31	3.75E-02	0.88	1.75E-15	0.02	6.30E-01
FBgn0035542	DOR	485	-0.62	6.59E-03	0.00	9.77E-01	0.00	1.00E+00
FBgn0024558	Dph5	1749	0.65	2.00E-07	0.09	2.15E-01	0.00	1.00E+00
FBgn0037295	dpr16	116	2.16	3.85E-14	0.00	9.71E-01	-0.01	9.39E-01
FBgn0053196	dpy	6720	1.12	5.51E-07	0.63	1.77E-03	0.01	1.00E+00
FBgn0032293	Dpy-30L1	556	0.88	3.89E-06	-0.01	9.49E-01	0.00	1.00E+00
FBgn0260006	drd	87	0.15	5.72E-01	1.73	4.49E-05	0.01	1.00E+00
FBgn0004638	drk	3220	-0.61	7.50E-08	-0.02	8.51E-01	0.00	1.00E+00
FBgn0024244	drrm	2325	-0.71	1.13E-07	-0.15	8.06E-02	-0.01	1.00E+00
FBgn0278608	Dsp1	6983	-0.58	7.34E-05	0.00	9.82E-01	0.00	1.00E+00
FBgn0261799	dsx-c73A	101	1.06	6.38E-06	0.37	2.38E-02	0.00	1.00E+00
FBgn0027101	Dyrk3	2604	-0.88	1.38E-09	-0.03	7.75E-01	0.00	1.00E+00
FBgn0002592	E(sp)jml2-BFM	1109	0.65	6.60E-06	-0.12	1.52E-01	0.00	1.00E+00

FBgn0002629	E(spl)m4-BFM	800	0.72	3.01E-07	0.05	5.64E-01	0.09	1.63E-01
FBgn0002732	E(spl)malpha-BFM	2631	0.76	1.39E-05	-0.01	9.10E-01	0.00	1.00E+00
FBgn0002735	E(spl)mgamma-HLH	148	0.65	4.39E-03	0.05	5.80E-01	0.01	8.87E-01
FBgn0011766	E2f1	4380	-0.84	3.21E-10	0.01	9.30E-01	0.01	1.00E+00
FBgn0069242	eca	731	0.68	1.04E-03	0.00	9.98E-01	-0.01	1.00E+00
FBgn0033879	Echs1	3518	0.92	3.48E-26	-0.02	8.64E-01	0.00	1.00E+00
FBgn0260746	Ect3	339	-1.92	2.07E-19	0.04	7.15E-01	-0.01	1.00E+00
FBgn0028737	eEF1beta	17684	0.95	5.64E-23	-0.07	3.37E-01	0.00	1.00E+00
FBgn0029176	eEF1gamma	47067	0.69	1.56E-30	-0.04	6.50E-01	0.00	1.00E+00
FBgn0034883	Egfp2	10	0.03	8.59E-01	1.95	2.90E-03	0.19	1.44E-01
FBgn0037270	eIF3f1	6584	0.80	1.53E-14	-0.04	7.25E-01	0.00	1.00E+00
FBgn0022023	eIF3h	7150	0.90	6.93E-21	0.00	9.80E-01	0.00	1.00E+00
FBgn0020660	eIF4B	389	-0.77	7.87E-03	-0.12	2.19E-01	-0.07	3.37E-01
FBgn0053100	eIF4EHP	1127	-1.07	3.14E-18	0.03	7.43E-01	0.00	1.00E+00
FBgn0023213	eIF4G1	11399	-0.77	1.42E-10	-0.03	7.86E-01	0.00	1.00E+00
FBgn0262734	eIF4H1	7393	-1.47	7.70E-14	0.01	9.18E-01	0.00	1.00E+00
FBgn0030719	eIF5	87	-2.37	1.38E-05	0.03	7.39E-01	0.00	1.00E+00
FBgn0034915	eIF6	2129	0.36	8.36E-03	0.83	2.03E-15	0.00	1.00E+00
FBgn0004858	eIB	1567	-0.77	1.52E-09	0.04	6.25E-01	0.00	1.00E+00
FBgn0037534	ELOVL	41	0.60	2.45E-02	-0.09	4.12E-01	0.00	1.00E+00
FBgn0062440	EMRE	456	0.87	1.66E-05	0.01	9.36E-01	0.00	1.00E+00
FBgn0000579	Eno	10736	0.65	1.05E-11	-0.03	7.79E-01	-0.01	1.00E+00
FBgn0264693	ens	3968	-0.63	2.15E-06	0.01	9.18E-01	0.00	1.00E+00
FBgn0036319	Ent3	19	-0.14	4.83E-01	-0.83	1.87E-02	-0.01	1.00E+00
FBgn0025936	Eph	4729	-0.81	1.92E-08	-0.07	4.30E-01	0.00	1.00E+00
FBgn0040324	Ephrin	2393	-0.62	2.73E-03	-0.01	9.53E-01	0.00	1.00E+00
FBgn0005660	Ets21C	87	0.15	5.10E-01	2.51	3.68E-04	0.00	1.00E+00
FBgn0033668	exp	166	-0.65	1.72E-03	-0.06	4.78E-01	0.00	1.00E+00
FBgn0034529	FAM21	494	-0.58	1.42E-05	0.02	8.90E-01	0.01	1.00E+00
FBgn0032428	Fam92	20	0.07	7.33E-01	3.79	5.35E-11	0.00	1.00E+00
FBgn0042627	FASN2	15	0.06	6.87E-01	0.67	4.83E-02	0.10	2.91E-01
FBgn0034999	Fatp3	93	0.25	3.03E-01	-1.49	1.09E-03	-0.09	3.00E-01
FBgn0014163	fax	30703	-0.92	3.44E-16	-0.10	1.77E-01	0.00	1.00E+00
FBgn0000639	Fbp1	20462	0.58	1.65E-02	-0.05	6.80E-01	0.00	1.00E+00
FBgn0004897	fd96Ca	39	0.18	2.26E-01	-2.52	9.80E-08	0.00	1.00E+00
FBgn0004898	fd96Cb	154	1.83	1.09E-03	-1.96	8.37E-05	0.01	1.00E+00
FBgn0011768	Fdh	3119	1.45	1.89E-32	0.12	9.98E-02	0.02	6.08E-01
FBgn0015221	Fer2LCH	4994	0.62	1.05E-16	0.11	6.21E-02	0.00	1.00E+00
FBgn0039969	Fis1	1106	-0.59	9.95E-05	-0.02	8.95E-01	0.00	1.00E+00
FBgn0000658	fj	5209	-0.61	3.71E-11	0.11	9.65E-02	0.00	1.00E+00
FBgn0013954	Fkbp12	9074	1.03	6.70E-36	0.08	2.51E-01	0.00	1.00E+00
FBgn0033806	FLASH	452	-0.84	2.02E-07	0.04	6.52E-01	0.00	1.00E+00
FBgn0028734	Fmr1	5727	-0.78	5.68E-09	0.05	5.79E-01	0.00	1.00E+00
FBgn0286222	Fum1	4193	0.72	1.52E-10	-0.04	7.12E-01	0.00	1.00E+00
FBgn0039932	fuss	37	-0.01	9.66E-01	2.22	1.05E-05	0.00	1.00E+00
FBgn0001085	fz	2807	-0.62	1.53E-06	-0.08	3.18E-01	0.00	1.00E+00
FBgn0031275	GABA-B-R3	12	0.31	1.46E-01	3.04	4.22E-05	0.00	1.00E+00
FBgn0033153	Gadd45	924	-0.03	8.97E-01	1.85	2.07E-41	0.00	1.00E+00
FBgn0001122	Galphao	883	-0.93	4.45E-10	-0.02	8.19E-01	0.00	1.00E+00
FBgn0004435	Galphaq	656	-1.67	8.33E-15	0.00	9.86E-01	0.00	1.00E+00
FBgn0001123	Galphas	2681	-0.69	1.58E-16	-0.03	8.08E-01	0.00	1.00E+00
FBgn0001091	Gapdh1	5452	0.68	3.17E-08	0.03	7.91E-01	0.00	1.00E+00
FBgn0001092	Gapdh2	16172	0.72	1.33E-21	0.08	2.03E-01	0.00	1.00E+00
FBgn0032223	GATAd	1049	-0.75	4.92E-07	-0.05	6.16E-01	0.00	1.00E+00
FBgn0001105	Gbeta13F	6116	-1.18	2.14E-13	-0.02	8.45E-01	0.00	1.00E+00
FBgn0040319	Gclc	466	-0.10	6.52E-01	0.86	6.23E-10	0.00	1.00E+00
FBgn0020388	Gcn5	1584	0.01	9.38E-01	1.05	8.06E-33	0.01	1.00E+00
FBgn0000808	gd	21	0.13	5.32E-01	3.47	7.24E-13	0.00	1.00E+00
FBgn0033081	geminin	1895	0.66	1.64E-06	-0.02	9.04E-01	0.00	1.00E+00
FBgn0250823	gish	4407	-0.94	4.34E-13	0.03	7.82E-01	0.00	1.00E+00
FBgn0015229	glec	1116	-0.61	3.40E-05	0.02	8.88E-01	-0.01	1.00E+00
FBgn0004913	Gnfr1	1884	-0.64	1.25E-06	-0.01	9.54E-01	0.01	1.00E+00
FBgn0263048	Gpdh3	671	-0.71	1.65E-07	0.05	5.72E-01	0.01	1.00E+00
FBgn0260798	Gprk1	1444	-0.93	2.42E-16	-0.06	4.44E-01	0.00	1.00E+00
FBgn0035167	Gr61a	111	0.64	1.02E-02	1.25	3.97E-08	0.00	1.00E+00
FBgn0039494	grass	168	0.95	6.23E-04	-0.03	7.66E-01	0.00	1.00E+00
FBgn0001137	grk	60	-1.88	3.50E-06	0.01	9.09E-01	-0.01	1.00E+00
FBgn0019982	Gs1l	293	0.61	5.31E-03	0.00	9.95E-01	0.00	1.00E+00
FBgn0001148	gsb	14	0.09	6.04E-01	-1.84	2.89E-03	0.00	1.00E+00
FBgn0001147	gsb-n	13	0.07	6.91E-01	-1.55	4.35E-03	0.00	1.00E+00
FBgn0001149	GstD1	10655	1.18	7.26E-22	0.08	3.21E-01	-0.01	1.00E+00
FBgn0010039	GstD3	959	-1.17	1.90E-10	0.63	3.50E-07	0.00	1.00E+00
FBgn0038020	GstD9	723	-0.53	5.19E-03	0.89	3.62E-10	0.02	7.52E-01
FBgn0034335	GstE1	1270	0.50	2.32E-02	5.48	0.00E+00	0.62	1.95E-05
FBgn0027590	GstE12	2243	0.80	1.39E-08	0.06	5.13E-01	0.00	1.00E+00
FBgn0063498	GstE2	76	0.03	8.52E-01	6.89	9.09E-39	0.00	1.00E+00
FBgn0063495	GstE5	41	0.36	1.44E-01	1.34	9.60E-05	-0.01	1.00E+00
FBgn0063494	GstE6	374	0.19	4.42E-01	4.52	2.60E-102	0.80	1.67E-03
FBgn0063492	GstE8	106	0.14	5.85E-01	1.66	7.07E-11	0.63	1.24E-02

FBgn0050000	GstT1	515	-0.02	9.28E-01	1.05	3.81E-19	0.00	1.00E+00
FBgn0031117	GstT3	109	0.98	3.51E-04	0.02	8.80E-01	-0.03	6.08E-01
FBgn0026238	gus	2692	-0.99	3.39E-18	-0.01	9.44E-01	0.00	1.00E+00
FBgn0039936	Gyf	5384	-0.60	9.10E-09	-0.05	5.59E-01	0.00	1.00E+00
FBgn0016660	H15	67	0.29	1.75E-01	-1.81	1.80E-04	0.01	1.00E+00
FBgn0032394	Hacd1	670	0.71	1.68E-07	-0.22	1.37E-02	0.00	1.00E+00
FBgn0034488	Hacl	2789	0.59	1.23E-11	-0.03	7.67E-01	0.00	1.00E+00
FBgn0286508	Had1	310	0.66	8.55E-03	-0.01	9.16E-01	0.01	1.00E+00
FBgn0033949	Had2	63	0.21	4.30E-01	-0.31	7.20E-02	-0.59	2.15E-02
FBgn0046706	Haspin	1098	-1.00	3.56E-13	0.01	9.18E-01	-0.01	9.13E-01
FBgn0051119	HDAC11	108	-0.87	4.32E-04	0.13	3.37E-01	-0.01	1.00E+00
FBgn0011224	heph	19761	-0.80	6.76E-07	-0.01	9.33E-01	0.00	1.00E+00
FBgn0001185	her	823	-0.85	6.24E-10	0.00	9.90E-01	0.00	1.00E+00
FBgn0031459	HINT1	2526	1.22	1.99E-18	0.04	6.85E-01	0.00	1.00E+00
FBgn0029676	HIP-R	1449	-1.00	1.27E-11	0.02	8.36E-01	-0.01	1.00E+00
FBgn0010228	HmgZ	5046	-1.13	3.34E-40	-0.06	4.70E-01	0.00	1.00E+00
FBgn0035160	hng3	952	0.83	6.58E-08	0.03	7.51E-01	-0.02	7.72E-01
FBgn0286786	holp	2078	0.67	3.30E-05	0.06	4.66E-01	0.00	1.00E+00
FBgn0025777	homer	1227	-0.59	2.79E-06	-0.01	9.45E-01	0.00	1.00E+00
FBgn0039019	HP1c	924	0.74	1.49E-08	0.02	8.82E-01	-0.01	1.00E+00
FBgn0035829	HP4	943	0.86	1.33E-08	-0.01	9.47E-01	0.00	1.00E+00
FBgn0036992	Hpd	47	-0.06	8.29E-01	1.06	2.78E-02	0.00	1.00E+00
FBgn0062928	hpRNA:CR33940	1575	0.04	8.63E-01	0.08	3.50E-01	-0.63	6.35E-05
FBgn0261239	Hr39	2570	-0.62	2.60E-04	0.03	7.29E-01	0.00	1.00E+00
FBgn0040438	Hrb27C	27370	-0.74	5.65E-06	0.00	9.93E-01	0.00	1.00E+00
FBgn0015949	hrg	4460	-0.65	6.58E-08	-0.01	9.30E-01	0.00	1.00E+00
FBgn0001217	Hsc70-2	69	6.71	3.42E-10	-0.17	2.55E-01	-0.01	1.00E+00
FBgn0266599	Hsc70-4	117280	0.62	2.13E-13	-0.02	8.37E-01	-0.01	1.00E+00
FBgn0001225	Hsp26	9822	1.22	1.08E-09	-0.76	2.25E-05	-0.01	9.36E-01
FBgn0015245	Hsp60A	10641	0.72	1.47E-15	0.03	7.32E-01	0.00	1.00E+00
FBgn0001229	Hsp67Bc	154	0.75	5.60E-03	-0.25	1.02E-01	1.19	2.82E-04
FBgn0001230	Hsp68	4283	2.04	3.72E-05	-0.23	1.53E-01	0.00	1.00E+00
FBgn0013276	Hsp70Ab	244	1.56	5.11E-05	-0.04	6.54E-01	0.00	1.00E+00
FBgn0013278	Hsp70Bb	477	3.65	6.59E-06	-0.04	6.85E-01	0.00	1.00E+00
FBgn0013279	Hsp70Bc	336	0.14	5.78E-01	-0.60	2.76E-02	0.00	1.00E+00
FBgn0061198	HSPC300	346	0.67	1.15E-03	0.03	7.98E-01	0.00	1.00E+00
FBgn0001235	hth	8836	-1.34	8.95E-12	-0.03	7.37E-01	0.00	1.00E+00
FBgn0010389	hitl	655	-0.47	5.38E-04	-0.68	7.42E-11	-0.03	5.57E-01
FBgn0033968	hui	830	1.30	1.52E-31	-0.25	1.07E-03	-0.40	2.25E-06
FBgn0036556	hzig	1250	-0.84	3.30E-07	-0.04	6.88E-01	0.00	1.00E+00
FBgn0286204	ich	15	-0.15	4.49E-01	0.76	3.76E-02	0.82	3.10E-02
FBgn0001248	ldh	11385	0.64	1.66E-18	-0.41	1.55E-11	-0.79	3.46E-41
FBgn0036690	llp8	61	0.10	4.72E-01	7.14	7.50E-17	0.00	1.00E+00
FBgn0285926	lmp	2083	-0.92	7.76E-06	0.01	9.32E-01	0.00	1.00E+00
FBgn0001255	lmpE3	1673	0.60	8.75E-03	-0.03	8.00E-01	-0.01	1.00E+00
FBgn0001256	lmpL1	53	0.18	4.69E-01	-2.17	5.55E-05	-0.01	1.00E+00
FBgn0001263	inaD	152	-1.09	6.41E-06	-0.33	1.27E-01	-0.05	5.16E-01
FBgn0039459	IntS12	266	0.59	4.56E-03	0.12	1.91E-01	0.84	3.22E-06
FBgn0262117	IntS3	2249	-0.72	5.69E-13	-0.03	8.06E-01	0.00	1.00E+00
FBgn0027106	inx7	34	1.67	7.61E-05	0.00	9.88E-01	-0.01	1.00E+00
FBgn0259683	Ir40a	56	0.12	4.36E-01	5.29	3.59E-25	0.01	1.00E+00
FBgn0050081	Ir51b	36	-0.63	1.99E-02	0.00	9.89E-01	0.00	1.00E+00
FBgn0011774	lrpb	458	-0.04	8.60E-01	1.22	2.35E-45	0.02	6.08E-01
FBgn0036126	lrpb18	342	-0.22	2.45E-01	1.38	2.54E-33	0.00	1.00E+00
FBgn0037637	lscU	1069	-0.24	1.13E-01	1.08	5.20E-30	0.00	1.00E+00
FBgn0034005	ltqaPS4	26	0.83	6.27E-03	0.28	1.34E-01	0.00	1.00E+00
FBgn0010053	Jheh1	254	0.43	2.53E-02	-0.67	4.97E-05	0.00	1.00E+00
FBgn0028424	Jhl-26	62	-0.06	8.21E-01	1.56	1.78E-03	0.00	1.00E+00
FBgn0020906	Jon25Bi	21	-0.13	2.46E-01	-2.69	6.00E-03	-0.01	1.00E+00
FBgn0031654	Jon25Bii	14	-0.12	2.89E-01	-1.07	2.92E-02	-0.01	1.00E+00
FBgn0035665	Jon65Aiii	69	-0.02	8.87E-01	-3.27	4.09E-03	-0.02	9.06E-01
FBgn0250815	Jon65Aiv	95	-0.01	9.39E-01	-5.49	2.64E-04	-0.02	1.00E+00
FBgn0025820	JTBR	391	0.66	1.51E-04	0.04	6.21E-01	0.00	1.00E+00
FBgn0001296	kar	177	0.71	1.82E-03	0.08	3.88E-01	-0.01	1.00E+00
FBgn0015399	kek1	2777	-0.75	1.30E-07	-0.10	1.92E-01	0.15	8.10E-02
FBgn0039925	Kif3C	10	-0.20	3.61E-01	0.22	1.84E-01	1.55	9.41E-03
FBgn0001323	knrl	445	-0.98	3.52E-07	0.18	9.48E-02	0.00	1.00E+00
FBgn0034098	krimp	58	0.81	5.98E-03	0.02	8.22E-01	0.53	3.30E-02
FBgn0040206	krz	1877	-0.74	4.98E-07	0.02	8.67E-01	0.00	1.00E+00
FBgn0040890	ksh	432	0.80	1.06E-04	0.01	9.07E-01	0.00	1.00E+00
FBgn0041627	Ku80	500	-0.25	7.23E-02	1.10	1.85E-41	0.02	6.49E-01
FBgn0036667	kud	749	0.74	1.15E-04	0.01	9.30E-01	0.00	1.00E+00
FBgn0259984	kuz	2737	-0.59	1.26E-03	-0.04	6.48E-01	0.00	1.00E+00
FBgn0040153	l(1)G0469	354	-0.48	2.80E-02	-0.66	2.67E-03	-0.01	1.00E+00
FBgn0284251	l(2)J5287	1676	-0.58	6.07E-06	0.03	8.01E-01	0.00	1.00E+00
FBgn0002031	l(2)J37Cc	3950	0.63	7.33E-12	0.12	4.75E-02	0.00	1.00E+00
FBgn0002121	l(2)jl	5956	-0.66	9.23E-06	-0.03	7.39E-01	0.00	1.00E+00
FBgn0284244	l(2)k05911	1160	-0.03	8.80E-01	0.95	2.58E-13	-0.05	3.65E-01
FBgn0035617	l(3)psg2	1918	-0.65	2.42E-05	0.04	6.68E-01	0.00	1.00E+00



FBgn0008651	lbi	44	0.20	2.70E-01	-2.03	4.28E-05	0.00	1.00E+00
FBgn0001258	Ldh	467	0.64	4.76E-03	1.77	2.03E-15	0.07	3.52E-01
FBgn0016675	Lectin-galC1	18	0.05	7.07E-01	1.81	1.00E-02	0.97	3.10E-02
FBgn0034877	levy	2150	0.87	1.58E-07	0.02	8.52E-01	0.00	1.00E+00
FBgn0025692	Lfg	29	-0.11	6.55E-01	-0.99	2.30E-02	-0.02	8.66E-01
FBgn0039907	Igs	3040	-0.63	1.33E-06	-0.03	7.79E-01	0.00	1.00E+00
FBgn0041111	lilli	1423	-0.65	1.41E-04	-0.01	9.51E-01	0.00	1.00E+00
FBgn0026411	Lim1	66	0.31	1.24E-01	-2.43	3.62E-08	0.01	1.00E+00
FBgn0032253	LManI	47	-0.30	2.32E-01	-0.82	3.71E-03	-0.16	1.60E-01
FBgn0027611	LManII	658	0.16	5.25E-01	-0.98	2.09E-04	-0.03	7.07E-01
FBgn0051044	lncRNA:CR31044	109	-0.62	1.51E-02	-0.06	4.99E-01	0.00	1.00E+00
FBgn0063127	lncRNA:CR33938	820	2.12	4.16E-22	0.14	1.56E-01	0.00	1.00E+00
FBgn0267910	lncRNA:CR34335	7316	1.25	1.68E-05	0.02	8.76E-01	0.00	1.00E+00
FBgn0259993	lncRNA:CR42491	1363	0.61	4.70E-06	0.06	4.52E-01	-0.94	5.20E-17
FBgn0261813	lncRNA:CR42755	10	-0.25	2.06E-01	-0.12	3.37E-01	-2.47	2.02E-03
FBgn0262620	lncRNA:CR43144	765	0.08	7.87E-01	5.09	1.28E-279	0.02	7.45E-01
FBgn0262886	lncRNA:CR43241	230	-1.36	3.84E-09	0.04	7.17E-01	0.00	1.00E+00
FBgn0268827	lncRNA:CR43334	202	0.33	1.75E-01	0.68	2.98E-02	-0.03	7.07E-01
FBgn0263415	lncRNA:CR43461	36	-0.06	8.34E-01	0.61	3.42E-02	0.00	1.00E+00
FBgn0263617	lncRNA:CR43626	25	-0.89	4.25E-03	0.00	9.88E-01	0.00	1.00E+00
FBgn0263626	lncRNA:CR43635	12	0.86	5.82E-03	0.02	8.52E-01	0.00	1.00E+00
FBgn0264721	lncRNA:CR43989	32	-0.04	9.11E-01	0.85	7.12E-03	0.01	1.00E+00
FBgn0264794	lncRNA:CR44024	20	0.03	9.25E-01	2.10	2.05E-06	0.00	1.00E+00
FBgn0264834	lncRNA:CR44042	177	-0.77	1.55E-03	0.63	1.55E-03	0.00	1.00E+00
FBgn0264942	lncRNA:CR44111	42	0.09	5.34E-01	5.99	1.17E-27	0.00	1.00E+00
FBgn0264984	lncRNA:CR44135	23	-0.29	1.06E-01	1.21	3.43E-03	-0.01	1.00E+00
FBgn0265422	lncRNA:CR44334	427	-0.68	3.70E-04	0.20	6.50E-02	0.01	8.66E-01
FBgn0265497	lncRNA:CR44366	18	-0.66	1.58E-02	-0.03	7.38E-01	0.00	1.00E+00
FBgn0265651	lncRNA:CR44458	17	-0.04	8.81E-01	1.51	3.11E-03	-0.01	1.00E+00
FBgn0266049	lncRNA:CR44814	120	-1.88	1.42E-09	0.04	7.13E-01	0.00	1.00E+00
FBgn0266051	lncRNA:CR44816	80	-1.42	2.27E-06	0.00	9.92E-01	-0.01	1.00E+00
FBgn0266414	lncRNA:CR45054	19	0.14	3.83E-01	0.79	3.16E-02	0.00	1.00E+00
FBgn0266549	lncRNA:CR45102	308	-2.24	1.22E-12	0.02	8.91E-01	0.00	1.00E+00
FBgn0266691	lncRNA:CR45181	18	0.87	5.43E-03	0.52	4.50E-02	0.01	9.89E-01
FBgn0267793	lncRNA:CR45232	366	-0.73	3.43E-04	-0.15	1.61E-01	0.00	1.00E+00
FBgn0266866	lncRNA:CR45327	19	-0.60	2.28E-02	-0.03	8.04E-01	-0.01	1.00E+00
FBgn0266958	lncRNA:CR45409	159	-1.00	1.92E-05	-0.03	7.29E-01	0.00	1.00E+00
FBgn0267029	lncRNA:CR45473	135	-0.38	7.22E-02	0.78	1.73E-05	0.01	1.00E+00
FBgn0267073	lncRNA:CR45517	44	-0.04	8.97E-01	2.24	6.58E-11	0.04	5.85E-01
FBgn0267126	lncRNA:CR45566	684	0.92	7.68E-13	0.05	6.05E-01	0.00	1.00E+00
FBgn0267635	lncRNA:CR45973	81	-0.26	3.03E-01	1.44	1.55E-08	0.00	1.00E+00
FBgn0278598	lncRNA:CR46268	190	-1.19	1.56E-06	0.03	7.60E-01	0.00	1.00E+00
FBgn0267585	lncRNA:dntiRL	95	-0.03	9.12E-01	1.02	6.17E-06	0.00	1.00E+00
FBgn0022238	lolal	3178	-1.02	7.82E-19	0.05	5.82E-01	0.00	1.00E+00
FBgn0052699	LPCAT	956	-0.61	5.17E-07	0.00	9.93E-01	0.00	1.00E+00
FBgn0028582	lof	1867	-0.59	1.74E-08	-0.01	9.20E-01	0.00	1.00E+00
FBgn0267861	Maf1	2161	-0.95	1.80E-17	0.00	9.83E-01	0.00	1.00E+00
FBgn0029979	mahe	4391	-0.78	1.42E-04	-0.03	7.25E-01	0.00	1.00E+00
FBgn0032382	Mal-B2	163	0.24	3.10E-01	2.29	9.15E-07	0.00	1.00E+00
FBgn0034282	Mapmodulin	8990	-0.84	1.93E-15	0.05	5.94E-01	0.00	1.00E+00
FBgn0039972	Marf1	212	0.44	4.74E-02	1.26	1.83E-10	-0.01	1.00E+00
FBgn0039914	mav	2998	-0.75	1.06E-16	0.07	3.67E-01	0.00	1.00E+00
FBgn0035811	Mcad	4056	0.66	1.26E-09	-0.26	2.17E-03	0.00	1.00E+00
FBgn0032929	Mcm10	613	-0.83	1.75E-08	0.06	4.99E-01	0.02	7.84E-01
FBgn0284442	Mcm3	2442	0.59	1.94E-05	-0.01	9.16E-01	0.00	1.00E+00
FBgn0032116	Mco1	31	-0.16	5.19E-01	-0.74	2.10E-02	0.00	1.00E+00
FBgn0262782	Mdh1	2243	0.69	7.72E-06	-0.03	7.73E-01	0.00	1.00E+00
FBgn0262559	Mdh2	2464	0.61	1.94E-06	0.05	5.86E-01	0.00	1.00E+00
FBgn0034707	MED16	746	0.29	2.14E-02	-0.58	1.75E-11	0.00	1.00E+00
FBgn0039923	MED26	3695	-0.93	2.24E-08	-0.04	6.74E-01	0.00	1.00E+00
FBgn0039337	MED28	361	0.64	1.35E-03	0.03	7.60E-01	0.00	1.00E+00
FBgn0024556	mEFTu1	2555	0.70	8.55E-10	0.15	4.44E-02	0.00	1.00E+00
FBgn0039851	mey	1124	1.29	3.47E-17	1.26	1.81E-23	1.01	3.55E-15
FBgn0031307	MFS3	3325	0.69	9.89E-07	0.00	9.93E-01	0.00	1.00E+00
FBgn0025814	Mgst1	739	0.87	2.43E-05	-0.03	7.47E-01	0.00	1.00E+00
FBgn0036333	MICAL-like	1637	-0.63	2.14E-13	-0.12	3.63E-02	0.00	1.00E+00
FBgn0261963	mid	203	0.43	4.48E-02	-0.58	3.07E-03	0.01	1.00E+00
FBgn0039250	Mink	2302	-0.60	9.89E-07	-0.06	4.88E-01	0.00	1.00E+00
FBgn0026061	Mipp1	38	1.35	5.54E-04	0.00	9.98E-01	0.00	1.00E+00
FBgn0263112	Mitf	2077	-0.73	4.40E-07	0.00	9.90E-01	0.04	4.11E-01
FBgn0024326	Mkk4	1661	-0.65	1.15E-11	-0.02	9.00E-01	0.00	1.00E+00
FBgn0002774	mle	2065	-0.88	3.04E-14	-0.08	2.61E-01	0.00	1.00E+00
FBgn0259168	mb	2631	-0.67	4.00E-06	-0.05	6.05E-01	0.00	1.00E+00
FBgn0263241	Mocs1	299	0.02	9.55E-01	1.00	6.99E-12	-0.02	7.07E-01
FBgn0026409	Mpcp2	7899	0.69	8.14E-23	0.05	5.80E-01	0.00	1.00E+00
FBgn0020270	mre11	1699	0.34	1.30E-03	1.11	7.59E-75	0.35	3.50E-07
FBgn0034091	mrj	966	-0.79	8.03E-13	-0.01	9.45E-01	0.00	1.00E+00
FBgn0032456	MRP	3772	0.06	7.35E-01	1.55	5.28E-48	0.00	1.00E+00
FBgn0011787	mRpL12	969	0.91	4.58E-07	0.02	8.61E-01	0.00	1.00E+00

FBgn0035122	mRpL17	461	0.68	2.30E-05	0.04	6.74E-01	0.00	1.00E+00
FBgn0036135	mRpL2	767	0.65	2.40E-05	0.01	9.37E-01	0.00	1.00E+00
FBgn0040907	mRpL33	284	1.11	1.42E-07	0.00	9.86E-01	-0.01	1.00E+00
FBgn0038923	mRpL35	302	0.61	9.42E-04	-0.01	9.37E-01	0.00	1.00E+00
FBgn0030552	mRpL38	817	0.65	1.45E-05	0.02	8.73E-01	0.00	1.00E+00
FBgn0037330	mRpL44	725	0.66	2.81E-05	0.02	8.52E-01	0.00	1.00E+00
FBgn0031357	mRpL48	312	0.58	5.52E-03	0.01	9.18E-01	0.00	1.00E+00
FBgn0030433	mRpL49	450	0.84	2.67E-05	0.03	8.00E-01	0.00	1.00E+00
FBgn0028648	mRpL50	407	0.69	2.41E-04	0.01	9.24E-01	0.00	1.00E+00
FBgn0032053	mRpL51	425	0.96	1.82E-08	0.01	9.68E-01	-0.01	1.00E+00
FBgn0033208	mRpL52	367	0.95	2.88E-07	0.03	7.47E-01	0.00	1.00E+00
FBgn0038678	mRpL55	253	0.72	4.36E-04	0.00	9.72E-01	0.00	1.00E+00
FBgn0044030	mRpS14	193	1.02	3.28E-05	0.07	4.31E-01	0.00	1.00E+00
FBgn0030572	mRpS25	392	0.59	8.81E-04	0.03	7.83E-01	0.00	1.00E+00
FBgn0044510	mRpS5	493	-0.93	9.94E-07	-0.01	9.26E-01	0.00	1.00E+00
FBgn0011666	msi	2622	-0.62	3.63E-04	0.01	9.71E-01	0.00	1.00E+00
FBgn0027948	msps	6613	-0.62	3.50E-06	-0.01	9.70E-01	0.00	1.00E+00
FBgn0013672	mtATPase6	7880	-3.31	5.37E-41	-0.02	8.94E-01	0.00	1.00E+00
FBgn0013673	mtATPase8	1600	-3.84	3.78E-230	0.02	9.06E-01	0.02	9.34E-01
FBgn0013674	mtCol	59337	-0.61	1.51E-02	0.01	8.92E-01	0.00	1.00E+00
FBgn0013675	mtColl	18791	-1.47	1.12E-09	0.00	9.75E-01	-0.01	1.00E+00
FBgn0013686	mtlrRNA	420131	-2.84	3.45E-10	0.02	8.37E-01	0.00	1.00E+00
FBgn0013679	mtND1	4891	-3.62	7.13E-14	0.02	8.91E-01	0.00	1.00E+00
FBgn0013680	mtND2	1185	-4.38	3.24E-10	-0.03	7.42E-01	0.00	1.00E+00
FBgn0013681	mtND3	583	-3.85	7.22E-11	0.02	8.24E-01	0.01	1.00E+00
FBgn0262952	mtND4	3538	-2.38	7.67E-11	0.04	7.12E-01	0.00	1.00E+00
FBgn0013684	mtND5	6582	-2.51	1.53E-58	0.00	9.88E-01	0.03	4.80E-01
FBgn0013685	mtND6	440	-0.91	5.02E-03	-0.02	8.68E-01	0.00	1.00E+00
FBgn0013688	mtsRNA	534	-0.37	6.27E-02	1.14	2.01E-02	0.00	1.00E+00
FBgn0013698	mttRNA:Leu-TAG	25	-2.56	3.95E-05	0.02	9.10E-01	0.00	1.00E+00
FBgn0013710	mttRNA:Tyr-GTA	24	-0.61	2.14E-02	-0.01	9.71E-01	0.00	1.00E+00
FBgn0028956	mthl3	3240	-0.66	8.47E-16	0.05	5.44E-01	0.00	1.00E+00
FBgn0034219	mthl4	587	-0.91	1.26E-09	-0.02	8.83E-01	0.00	1.00E+00
FBgn0052475	mthl8	493	-0.52	7.63E-04	-0.06	6.13E-01	10.83	1.59E-36
FBgn0025352	Mtpbeta	4531	0.62	3.72E-12	-0.09	1.74E-01	0.00	1.00E+00
FBgn0262737	mub	5736	-0.69	5.78E-07	-0.05	5.79E-01	0.00	1.00E+00
FBgn0002887	mus201	555	-0.84	2.67E-06	0.57	8.19E-05	0.00	1.00E+00
FBgn0264272	mwh	95	-0.49	2.83E-02	-1.28	1.73E-08	0.00	1.00E+00
FBgn0262656	Myc	3026	-1.25	4.29E-08	0.01	9.30E-01	0.00	1.00E+00
FBgn0026199	myo	1852	-1.04	1.52E-11	0.02	8.64E-01	0.00	1.00E+00
FBgn0039157	Myo95E	879	-0.68	4.80E-07	0.00	9.96E-01	0.00	1.00E+00
FBgn0051216	Naam	156	-0.21	3.64E-01	0.62	4.56E-04	0.01	1.00E+00
FBgn0086904	Nacalpha	17191	0.66	9.52E-13	-0.05	5.39E-01	0.00	1.00E+00
FBgn0260795	NaPI-III	1252	-0.59	1.45E-05	-0.07	3.45E-01	-0.04	4.03E-01
FBgn0085417	nataisin	246	1.08	1.55E-09	0.12	1.55E-01	0.02	6.27E-01
FBgn0013303	Nca	871	-0.82	8.10E-09	-0.03	8.10E-01	0.00	1.00E+00
FBgn0086707	ncm	2162	-1.09	8.23E-10	0.03	7.48E-01	0.00	1.00E+00
FBgn0031021	ND-18	707	0.84	1.01E-05	0.08	3.70E-01	0.00	1.00E+00
FBgn0266582	ND-30	1362	0.67	1.79E-09	0.04	6.37E-01	0.00	1.00E+00
FBgn0037001	ND-39	2350	0.93	2.39E-21	0.03	7.96E-01	-0.01	1.00E+00
FBgn0058002	ND-AGGG	176	-1.41	4.06E-09	0.04	6.30E-01	0.00	1.00E+00
FBgn0034645	ND-B12	751	0.88	5.97E-07	-0.06	4.68E-01	0.00	1.00E+00
FBgn0025839	ND-B14.5A	357	0.75	3.67E-05	0.06	5.10E-01	0.00	1.00E+00
FBgn0034576	ND-B14.7	900	0.81	1.14E-06	0.04	6.74E-01	0.00	1.00E+00
FBgn0033961	ND-B15	514	0.94	2.40E-06	0.03	7.82E-01	0.00	1.00E+00
FBgn0029868	ND-B16.6	1491	0.95	1.26E-13	0.02	9.07E-01	0.00	1.00E+00
FBgn0001989	ND-B17	829	0.73	7.01E-07	-0.01	9.18E-01	0.00	1.00E+00
FBgn0031436	ND-B17.2	939	1.38	2.39E-21	-0.01	9.33E-01	0.00	1.00E+00
FBgn0030605	ND-B18	697	0.72	1.67E-08	0.07	4.19E-01	0.00	1.00E+00
FBgn0085468	ND-MWFE	607	0.80	3.40E-05	0.00	9.82E-01	0.00	1.00E+00
FBgn0021967	ND-PDSW	1240	1.05	1.19E-06	0.10	2.58E-01	0.00	1.00E+00
FBgn0017430	Nelf-E	566	0.19	2.49E-01	0.51	4.14E-07	0.90	5.05E-21
FBgn0027570	Nep2	1864	0.24	1.37E-01	-1.19	2.14E-22	-0.72	4.22E-08
FBgn0039564	Nep7	118	0.99	2.44E-04	0.02	8.45E-01	0.10	2.75E-01
FBgn0032393	Nfs1	892	0.16	3.80E-01	1.00	1.30E-19	0.00	1.00E+00
FBgn0036101	NijA	1536	-0.22	1.07E-01	-0.38	2.26E-04	-0.67	1.96E-10
FBgn0038079	NijC	67	0.83	2.32E-03	0.01	9.16E-01	-0.01	1.00E+00
FBgn0259896	NimC1	57	0.18	4.82E-01	-2.27	4.02E-06	-0.01	1.00E+00
FBgn0026401	Nipped-B	5024	-1.01	7.71E-10	0.01	9.69E-01	0.00	1.00E+00
FBgn0024321	NK7.1	331	-0.67	2.02E-04	-0.02	8.22E-01	0.03	5.71E-01
FBgn0051547	NKCC	84	0.03	9.36E-01	1.28	1.77E-03	-0.01	1.00E+00
FBgn0031866	Nlg2	15	2.40	3.35E-04	-0.03	7.75E-01	0.00	1.00E+00
FBgn0011817	nmo	3519	-0.72	9.06E-07	0.04	6.54E-01	0.00	1.00E+00
FBgn0037617	nom	365	-0.63	4.56E-04	0.05	6.11E-01	0.01	1.00E+00
FBgn0015520	nonA-1	647	-0.65	1.76E-06	-0.11	1.51E-01	0.00	1.00E+00
FBgn0033029	NoI3	5518	-0.69	2.88E-13	-0.05	5.72E-01	0.00	1.00E+00
FBgn0027785	NP15.6	1071	1.36	1.53E-13	0.02	8.85E-01	0.00	1.00E+00
FBgn0031381	Npc2a	201	0.59	1.30E-02	-0.01	9.10E-01	0.00	1.00E+00
FBgn0035092	Nplp1	42	-0.16	5.61E-01	-1.43	6.65E-05	0.00	1.00E+00

FBgn0040717	Nplp4	686	1.01	6.07E-04	-0.62	1.63E-02	0.96	4.01E-03
FBgn0261526	NT1	183	-0.07	8.23E-01	-0.80	1.26E-03	0.00	1.00E+00
FBgn0028411	Nxt1	883	0.59	7.17E-04	0.13	1.56E-01	0.00	1.00E+00
FBgn0027791	O-fut2	218	0.96	2.28E-05	0.00	9.76E-01	0.00	1.00E+00
FBgn0022774	Oat	220	-0.06	8.35E-01	-0.69	2.98E-02	-0.01	1.00E+00
FBgn0038344	obe	1568	-0.17	2.99E-01	0.87	8.91E-14	0.01	1.00E+00
FBgn0046875	Obp83g	76	1.39	1.93E-05	-0.07	4.76E-01	0.00	1.00E+00
FBgn0039678	Obp99a	345	2.49	2.05E-15	-2.20	1.17E-27	0.00	1.00E+00
FBgn0027600	obst-B	1761	0.83	9.71E-08	-0.04	6.25E-01	0.00	1.00E+00
FBgn0028996	onecut	28	-0.17	4.64E-01	2.85	7.82E-12	0.04	6.14E-01
FBgn0028393	Or43b	242	-0.70	3.46E-05	0.04	7.13E-01	0.00	1.00E+00
FBgn0039551	Or98a	41	-0.03	8.31E-01	8.76	7.97E-13	0.00	1.00E+00
FBgn0040279	Osi14	132	0.95	6.82E-04	1.56	3.99E-09	0.18	1.42E-01
FBgn0032197	ova	1116	-0.77	3.32E-07	0.00	9.86E-01	0.00	1.00E+00
FBgn0011227	ox	799	2.14	2.56E-01	0.02	6.38E-01	0.00	1.00E+00
FBgn0260799	p120ctn	3379	-1.11	1.81E-16	0.00	9.86E-01	0.00	1.00E+00
FBgn0265297	pAbp	44968	-0.66	4.08E-04	0.02	8.24E-01	0.00	1.00E+00
FBgn0005648	Pabp2	4791	-0.80	3.13E-09	0.15	7.73E-02	0.00	1.00E+00
FBgn0060296	pain	1156	-0.10	5.67E-01	-0.63	8.12E-08	-0.03	4.82E-01
FBgn0038100	Paip2	1311	-0.80	1.58E-07	0.00	1.00E+00	0.00	1.00E+00
FBgn0085432	pan	2131	-0.59	6.42E-03	0.00	9.77E-01	0.00	1.00E+00
FBgn0035397	PAN3	3490	-0.71	4.02E-11	-0.10	1.74E-01	0.00	1.00E+00
FBgn0010247	Parp	2656	-0.94	3.12E-08	0.38	6.00E-03	0.00	1.00E+00
FBgn0036007	path	4128	0.03	8.74E-01	0.03	8.10E-01	0.80	5.05E-13
FBgn0027580	PCB	2192	0.26	2.54E-01	-0.84	2.06E-04	-0.02	7.92E-01
FBgn0024841	Pcd	661	0.96	6.82E-08	-0.02	8.22E-01	0.00	1.00E+00
FBgn0086768	Pcmt	1557	0.98	5.51E-10	0.02	8.59E-01	0.00	1.00E+00
FBgn0005655	PCNA	4886	0.69	2.73E-15	0.06	3.90E-01	0.00	1.00E+00
FBgn0036580	PDCCD-5	930	0.91	5.47E-08	0.04	6.66E-01	0.00	1.00E+00
FBgn0039635	Pdhh	1804	0.61	4.78E-04	0.03	7.61E-01	0.00	1.00E+00
FBgn0016694	Pdp1	373	-1.14	5.67E-06	0.00	9.98E-01	0.00	1.00E+00
FBgn0031969	pes	393	-0.80	8.68E-06	0.00	9.86E-01	0.00	1.00E+00
FBgn0031530	Pgant2	288	0.65	9.45E-04	0.04	6.43E-01	0.00	1.00E+00
FBgn0031681	Pgant5	2854	-0.59	8.73E-06	-0.05	5.36E-01	0.00	1.00E+00
FBgn0014869	Pglym78	1405	0.87	6.68E-09	0.25	1.76E-02	0.00	1.00E+00
FBgn0035976	PGRP-LC	112	0.10	7.03E-01	-0.74	1.85E-04	-1.41	7.16E-13
FBgn0035438	PHGPx	2555	0.73	1.23E-05	0.04	7.06E-01	0.00	1.00E+00
FBgn0035089	Phk-3	2712	0.81	2.59E-09	-0.04	6.45E-01	-0.01	1.00E+00
FBgn0002521	pho	2284	-1.27	2.01E-21	-0.06	5.03E-01	0.00	1.00E+00
FBgn0036522	Phs	2259	-0.66	1.14E-07	0.03	7.54E-01	0.00	1.00E+00
FBgn0033479	PIG-N	188	-0.69	2.91E-04	-0.08	2.40E-01	0.00	1.00E+00
FBgn0086448	PIG-O	352	-0.84	5.87E-05	-0.10	3.17E-01	-0.01	1.00E+00
FBgn0038966	pinta	68	-0.07	8.23E-01	2.59	5.85E-18	1.24	2.00E-04
FBgn0038924	PIP4K	2088	-0.89	2.33E-15	-0.03	8.07E-01	-0.01	1.00E+00
FBgn0030400	Piis	2206	-0.74	4.02E-07	0.01	9.52E-01	0.00	1.00E+00
FBgn0004872	piwi	37	-0.40	1.07E-01	-0.69	2.81E-02	0.00	1.00E+00
FBgn0022382	Pka-R2	572	-0.62	4.35E-03	0.01	9.63E-01	0.00	1.00E+00
FBgn0036192	Pldn	144	-0.60	3.59E-03	-0.02	8.38E-01	0.00	1.00E+00
FBgn0259214	PMCA	7693	-0.73	5.33E-08	-0.01	9.33E-01	0.00	1.00E+00
FBgn0037737	Pnn	621	-0.66	3.63E-06	0.00	9.86E-01	0.00	1.00E+00
FBgn0036696	Pop5	239	0.63	2.04E-03	0.17	9.54E-02	0.01	1.00E+00
FBgn0003130	Poxn	231	0.63	5.12E-04	0.64	4.29E-06	0.05	3.88E-01
FBgn0053508	ppk13	1275	-0.27	1.10E-01	1.86	1.49E-64	0.45	1.10E-03
FBgn0261363	PPO3	59	0.63	1.08E-02	0.03	7.94E-01	0.00	1.00E+00
FBgn0011474	PR-Set7	2050	-0.63	3.34E-05	0.01	9.28E-01	0.00	1.00E+00
FBgn0033635	Prjp	107	-0.08	7.73E-01	-0.62	4.40E-03	-0.06	3.60E-01
FBgn0086134	Prosalpha2	4106	0.70	1.72E-16	-0.03	7.26E-01	-0.03	5.00E-01
FBgn0261394	Prosalpha3	3487	0.71	2.64E-08	-0.03	7.85E-01	0.00	1.00E+00
FBgn0027587	Prp4k	992	-0.65	1.36E-11	0.03	7.55E-01	0.16	1.67E-02
FBgn0033518	Prx2540-2	56	0.53	4.22E-02	-0.62	1.93E-02	0.00	1.00E+00
FBgn0035770	pst	722	0.88	2.24E-04	0.18	1.36E-01	0.00	1.00E+00
FBgn0026379	Pten	1333	-0.83	2.36E-09	-0.05	5.30E-01	0.00	1.00E+00
FBgn0034085	Ptp52F	12	-0.16	4.59E-01	-0.29	1.17E-01	-0.60	3.13E-02
FBgn0014007	Ptp69D	2086	-0.89	2.12E-13	-0.14	6.28E-02	0.00	1.00E+00
FBgn0243512	puc	688	-0.86	6.08E-06	0.00	9.80E-01	-0.01	1.00E+00
FBgn0033226	puml	453	0.27	1.11E-01	0.65	3.52E-09	0.01	1.00E+00
FBgn0022361	Pur-alpha	1438	-1.00	6.23E-08	0.01	9.30E-01	0.00	1.00E+00
FBgn0004577	Pxd	86	-0.01	9.75E-01	-0.87	3.05E-02	-0.03	6.72E-01
FBgn0033649	pyr	313	-0.85	3.77E-07	-0.05	5.43E-01	0.00	1.00E+00
FBgn0052412	QC	164	0.44	5.93E-02	-0.01	9.12E-01	-1.14	2.11E-06
FBgn0022987	qkr54B	1628	-1.10	1.29E-12	-0.05	5.42E-01	0.00	1.00E+00
FBgn0022986	qkr58E-1	1684	-0.95	7.55E-09	-0.02	8.81E-01	0.00	1.00E+00
FBgn0022984	qkr58E-3	1887	-0.97	6.58E-09	0.06	4.61E-01	0.00	1.00E+00
FBgn0051864	Qtzl	82	-0.35	1.62E-01	1.34	6.16E-08	-0.01	9.19E-01
FBgn0014010	Rab5	3111	-0.75	1.02E-15	0.00	9.99E-01	-0.01	1.00E+00
FBgn0030290	RabX2	20	0.03	8.57E-01	6.65	2.74E-11	0.00	1.00E+00
FBgn0014011	Rac2	1610	-0.87	1.83E-12	-0.04	6.69E-01	-0.01	1.00E+00
FBgn0020618	Rack1	56381	1.07	6.74E-36	-0.32	1.48E-05	0.00	1.00E+00
FBgn0034728	rad50	1403	-0.96	1.79E-10	0.87	1.40E-13	0.01	9.73E-01

FBgn0034646	Rae1	1214	0.61	3.94E-06	0.06	4.85E-01	0.00	1.00E+00
FBgn0003079	Raf	1265	-0.81	2.61E-16	-0.03	7.61E-01	0.00	1.00E+00
FBgn0039110	RanBP3	2099	0.62	1.98E-08	-0.02	8.88E-01	-0.01	9.85E-01
FBgn0004636	Rap1	4020	-1.04	1.23E-12	-0.01	9.55E-01	0.00	1.00E+00
FBgn0031745	rau	255	0.61	1.41E-03	-0.05	5.50E-01	0.00	1.00E+00
FBgn0030479	Rbp1-like	2083	-1.39	8.00E-35	0.06	4.91E-01	0.01	1.00E+00
FBgn0031047	Rcd-1	3879	0.62	4.92E-07	-0.02	8.48E-01	0.00	1.00E+00
FBgn0039644	rdog	430	-0.19	4.02E-01	2.41	3.73E-52	0.00	1.00E+00
FBgn0264493	rdx	1794	-0.80	1.57E-15	0.00	9.77E-01	0.01	1.00E+00
FBgn0027375	RecQ5	730	-1.02	3.31E-11	0.00	1.00E+00	0.01	1.00E+00
FBgn0021800	Reph	522	-0.83	9.85E-06	0.07	4.30E-01	0.01	9.70E-01
FBgn0021906	RFeSP	1542	0.74	6.01E-07	0.06	5.05E-01	-0.01	1.00E+00
FBgn0014020	Rho1	8527	-0.78	9.28E-22	0.03	7.71E-01	0.00	1.00E+00
FBgn0265605	Ric	315	-0.61	4.46E-04	-0.02	8.59E-01	0.00	1.00E+00
FBgn0003256	r1	1022	-0.65	3.22E-05	-0.01	9.40E-01	0.00	1.00E+00
FBgn0014022	Rib1	390	-0.84	1.02E-05	0.04	6.98E-01	0.00	1.00E+00
FBgn0262116	RNASEK	1235	-0.70	2.47E-07	0.09	2.58E-01	-0.03	5.42E-01
FBgn0065098	RNaseMRP:RNA	80	4.59	4.42E-10	0.57	3.60E-02	-0.03	6.87E-01
FBgn0046696	RNaseP:RNA	131	2.12	4.96E-12	0.05	5.84E-01	0.00	1.00E+00
FBgn0250838	roh	1748	0.64	8.88E-05	-0.03	7.61E-01	0.00	1.00E+00
FBgn0005649	Rox8	5628	-0.89	7.39E-27	-0.13	3.05E-02	0.00	1.00E+00
FBgn0010173	RpA-70	3830	-0.17	1.04E-01	0.58	8.68E-17	0.00	1.00E+00
FBgn0262954	Rpb12	562	1.01	4.13E-07	0.06	4.95E-01	-0.01	9.40E-01
FBgn0050499	Rpe	1477	0.82	4.26E-11	-0.02	8.91E-01	0.00	1.00E+00
FBgn0004855	Rpl15	1036	0.63	2.77E-06	-0.01	9.39E-01	-0.01	1.00E+00
FBgn0026373	Rpl33	900	0.63	3.15E-05	0.02	8.21E-01	0.00	1.00E+00
FBgn0022981	rpK	458	0.06	7.97E-01	0.75	1.76E-08	-0.01	1.00E+00
FBgn0036213	RpL10Ab	42243	0.74	3.62E-14	-0.35	3.27E-05	0.00	1.00E+00
FBgn0013325	RpL11	28172	0.92	3.13E-18	-0.02	8.26E-01	0.00	1.00E+00
FBgn0034968	RpL12	29887	0.59	9.92E-06	-0.13	1.05E-01	0.00	1.00E+00
FBgn0011272	RpL13	31038	1.32	7.08E-19	0.01	9.16E-01	0.00	1.00E+00
FBgn0037351	RpL13A	29649	1.58	4.20E-41	-0.03	7.96E-01	0.00	1.00E+00
FBgn0017579	RpL14	24860	1.54	1.76E-29	-0.04	7.13E-01	0.00	1.00E+00
FBgn0029897	RpL17	24696	1.51	2.72E-26	-0.03	7.43E-01	0.00	1.00E+00
FBgn0035753	RpL18	25719	1.26	6.13E-19	-0.04	7.01E-01	0.00	1.00E+00
FBgn0010409	RpL18A	33698	1.19	5.09E-22	0.01	9.46E-01	0.00	1.00E+00
FBgn0285950	RpL19	37514	0.70	2.79E-10	-0.02	8.39E-01	0.00	1.00E+00
FBgn0034837	RpL22-like	14	0.31	1.65E-01	-2.96	6.20E-04	0.00	1.00E+00
FBgn0010078	RpL23	29740	1.18	6.09E-15	-0.01	9.33E-01	0.00	1.00E+00
FBgn0032518	RpL24	20688	1.16	1.40E-10	0.00	9.94E-01	0.00	1.00E+00
FBgn0036825	RpL26	26262	1.18	5.38E-19	-0.09	2.57E-01	0.00	1.00E+00
FBgn0039359	RpL27	30893	1.82	7.59E-44	-0.07	4.00E-01	0.00	1.00E+00
FBgn0035422	RpL28	33296	0.92	3.35E-12	-0.05	5.91E-01	0.00	1.00E+00
FBgn0016726	RpL29	15027	2.47	1.56E-58	-0.03	7.67E-01	0.00	1.00E+00
FBgn0020910	RpL3	84241	0.82	9.57E-18	-0.32	1.18E-04	0.00	1.00E+00
FBgn0086710	RpL30	15925	0.82	5.69E-08	-0.15	9.68E-02	0.00	1.00E+00
FBgn0285949	RpL31	23945	1.87	4.08E-31	-0.07	3.96E-01	0.00	1.00E+00
FBgn0002626	RpL32	26148	1.55	3.34E-30	-0.08	3.38E-01	0.00	1.00E+00
FBgn0039406	RpL34a	4745	0.79	2.78E-08	0.00	9.93E-01	0.00	1.00E+00
FBgn0037686	RpL34b	14511	1.00	8.70E-10	0.00	1.00E+00	0.00	1.00E+00
FBgn0029785	RpL35	22897	1.11	1.57E-14	-0.04	6.97E-01	0.00	1.00E+00
FBgn0037328	RpL35A	18082	1.07	1.66E-06	0.03	7.56E-01	0.00	1.00E+00
FBgn0002579	RpL36	22750	0.63	4.03E-05	-0.05	5.93E-01	0.00	1.00E+00
FBgn0031980	RpL36A	20310	1.45	5.37E-17	-0.01	9.36E-01	0.00	1.00E+00
FBgn0030616	RpL37a	28870	1.44	2.13E-31	-0.01	9.31E-01	0.00	1.00E+00
FBgn0261608	RpL37A	15974	1.17	6.51E-15	-0.05	5.40E-01	0.00	1.00E+00
FBgn0040007	RpL38	10930	-1.22	8.25E-12	0.01	9.45E-01	0.00	1.00E+00
FBgn0023170	RpL39	14842	1.09	6.07E-13	-0.01	9.54E-01	0.00	1.00E+00
FBgn0003279	RpL4	68623	0.74	7.97E-10	-0.01	9.31E-01	0.00	1.00E+00
FBgn0003941	RpL40	28783	1.13	3.13E-23	-0.04	6.70E-01	0.00	1.00E+00
FBgn0066084	RpL41	44221	1.27	1.23E-12	-0.10	2.39E-01	0.00	1.00E+00
FBgn0039857	RpL6	40858	0.66	5.68E-09	-0.02	8.96E-01	0.00	1.00E+00
FBgn0005593	RpL7	46015	0.88	6.36E-19	-0.07	3.97E-01	0.00	1.00E+00
FBgn0014026	RpL7A	51685	0.64	1.91E-08	-0.04	6.85E-01	0.00	1.00E+00
FBgn0261602	RpL8	41973	0.93	2.53E-13	-0.03	7.65E-01	0.00	1.00E+00
FBgn0015756	RpL9	33572	1.23	3.91E-24	-0.04	6.30E-01	0.00	1.00E+00
FBgn0000100	RpLP0	49121	0.88	2.69E-10	-0.02	8.64E-01	0.00	1.00E+00
FBgn0002593	RpLP1	34330	1.50	2.88E-29	-0.05	6.18E-01	0.00	1.00E+00
FBgn0003274	RpLP2	29029	0.72	3.01E-04	0.02	8.90E-01	0.00	1.00E+00
FBgn0015283	Rpn10	3237	0.60	8.41E-07	-0.04	6.60E-01	-0.01	8.51E-01
FBgn0285947	RpS10b	22456	0.90	7.94E-17	-0.04	7.10E-01	0.00	1.00E+00
FBgn0033699	RpS11	27054	1.05	7.21E-11	-0.02	8.37E-01	0.00	1.00E+00
FBgn0286213	RpS12	22585	1.49	7.12E-26	-0.27	1.12E-02	0.00	1.00E+00
FBgn0010265	RpS13	36129	0.85	1.52E-13	-0.04	7.11E-01	0.00	1.00E+00
FBgn0004403	RpS14a	14676	0.84	1.97E-10	-0.02	8.88E-01	0.00	1.00E+00
FBgn0004404	RpS14b	5724	1.39	5.22E-15	0.00	9.94E-01	0.00	1.00E+00
FBgn0034138	RpS15	32466	1.00	1.50E-15	-0.12	1.11E-01	0.00	1.00E+00
FBgn0010198	RpS15Aa	22650	0.73	3.20E-09	-0.08	3.36E-01	0.00	1.00E+00
FBgn0033555	RpS15Ab	2011	0.81	1.69E-12	-0.06	5.17E-01	0.00	1.00E+00

FBgn0005533	RpS17	26903	1.72	4.39E-37	-0.06	4.59E-01	0.00	1.00E+00
FBgn0010411	RpS18	32633	1.38	2.01E-26	-0.05	5.78E-01	0.00	1.00E+00
FBgn0010412	RpS19a	27379	1.20	1.49E-08	0.00	9.88E-01	0.00	1.00E+00
FBgn0004867	RpS2	48438	0.78	4.36E-11	-0.12	1.17E-01	0.00	1.00E+00
FBgn0019936	RpS20	22643	1.07	7.12E-14	-0.18	4.75E-02	0.00	1.00E+00
FBgn0015521	RpS21	11086	0.72	1.53E-06	-0.03	8.07E-01	0.00	1.00E+00
FBgn0033912	RpS23	31632	1.84	3.62E-35	-0.04	6.97E-01	0.00	1.00E+00
FBgn0261596	RpS24	32050	1.17	2.61E-22	-0.08	2.62E-01	-0.01	1.00E+00
FBgn0086472	RpS25	28124	0.59	1.91E-05	-0.04	6.82E-01	0.00	1.00E+00
FBgn0261597	RpS26	31285	1.52	3.40E-35	-0.02	8.47E-01	0.00	1.00E+00
FBgn0030136	RpS28b	20297	0.86	1.46E-06	-0.07	3.87E-01	0.00	1.00E+00
FBgn0261599	RpS29	31258	0.83	1.80E-11	-0.07	4.10E-01	0.00	1.00E+00
FBgn0002622	RpS3	41096	1.00	7.80E-28	-0.10	1.22E-01	0.00	1.00E+00
FBgn0038834	RpS30	22722	0.64	4.12E-07	-0.04	6.49E-01	0.00	1.00E+00
FBgn0011284	RpS4	55820	1.07	4.18E-29	-0.06	4.68E-01	0.00	1.00E+00
FBgn0002590	RpS5a	48391	0.92	1.61E-23	-0.07	3.37E-01	0.00	1.00E+00
FBgn0261592	RpS6	46007	1.20	1.79E-20	-0.04	6.36E-01	0.00	1.00E+00
FBgn0039757	RpS7	40640	0.89	5.35E-11	-0.05	5.82E-01	0.00	1.00E+00
FBgn0039713	RpS8	39353	1.28	3.54E-25	-0.04	6.64E-01	0.00	1.00E+00
FBgn0010408	RpS9	31452	0.59	9.82E-06	-0.15	7.18E-02	0.00	1.00E+00
FBgn0028686	Rpt3	3750	0.69	2.73E-15	-0.02	8.50E-01	-0.01	9.19E-01
FBgn0283472	S6k	1848	-1.11	1.68E-13	0.06	4.86E-01	0.02	7.50E-01
FBgn0262866	S6kll	523	-0.60	8.22E-05	0.05	5.74E-01	0.00	1.00E+00
FBgn0037672	sage	118	-0.97	7.66E-04	0.02	8.54E-01	0.00	1.00E+00
FBgn0026371	SAK	1348	-0.58	1.68E-07	-0.05	6.10E-01	0.01	1.00E+00
FBgn0013334	Sap47	1082	-0.65	1.87E-05	0.00	9.73E-01	0.00	1.00E+00
FBgn0267378	sau	2766	-0.71	2.10E-12	-0.08	2.97E-01	0.00	1.00E+00
FBgn0051950	Sbat	156	1.17	4.34E-07	0.07	4.00E-01	-0.01	1.00E+00
FBgn0261872	scaf6	2332	-0.63	8.81E-18	-0.03	7.70E-01	0.00	1.00E+00
FBgn0038038	Scppdh2	466	1.03	4.86E-08	-0.02	8.24E-01	0.08	2.30E-01
FBgn0020907	Scp2	14	0.05	7.27E-01	0.07	5.58E-01	0.78	4.12E-02
FBgn0021765	scu	3185	1.00	5.91E-14	-0.11	1.65E-01	0.00	1.00E+00
FBgn0041094	scyl	8561	-1.33	8.68E-18	-0.06	4.87E-01	-0.01	1.00E+00
FBgn0003345	sd	7654	-0.68	6.92E-06	-0.01	9.09E-01	0.00	1.00E+00
FBgn0010415	Sdc	5389	-0.69	8.04E-06	-0.01	9.30E-01	0.00	1.00E+00
FBgn0014028	SdhB	1621	0.63	1.89E-06	0.00	9.76E-01	0.00	1.00E+00
FBgn0039112	SdhD	864	0.75	4.35E-07	-0.02	8.28E-01	0.00	1.00E+00
FBgn0053497	Sdic2	15	-0.38	1.03E-01	0.06	5.87E-01	2.96	5.80E-04
FBgn0035771	Sec63	3488	0.58	7.21E-13	0.02	8.44E-01	0.00	1.00E+00
FBgn0010414	SerT	71	-0.42	8.67E-02	-1.55	5.72E-07	-0.03	6.87E-01
FBgn0040022	Set1	2236	-1.19	1.64E-18	-0.04	6.94E-01	0.00	1.00E+00
FBgn0003371	sgg	3372	-0.85	5.82E-06	0.07	4.58E-01	0.00	1.00E+00
FBgn0052423	shp	1920	-0.90	1.74E-10	0.04	6.70E-01	0.00	1.00E+00
FBgn0003392	shi	2787	-0.60	3.04E-06	-0.03	7.56E-01	0.00	1.00E+00
FBgn0263873	sick	3454	0.08	6.69E-01	3.08	4.79E-168	0.00	1.00E+00
FBgn0010762	simj	2866	-0.61	1.03E-05	-0.07	4.22E-01	0.00	1.00E+00
FBgn0037802	Sirt6	173	-0.63	1.58E-03	0.03	7.51E-01	0.00	1.00E+00
FBgn0031971	Sirup	481	0.45	4.83E-02	-0.90	1.93E-04	0.00	1.00E+00
FBgn0031998	SLC5A11	132	-0.38	1.05E-01	-0.99	6.52E-04	-0.01	9.70E-01
FBgn0037810	sle	3373	-0.67	2.17E-05	0.02	8.42E-01	0.00	1.00E+00
FBgn0037203	slif	87	-0.66	1.01E-02	-0.06	5.03E-01	0.00	1.00E+00
FBgn0040011	Slmap	2039	-0.78	5.55E-15	0.04	7.15E-01	0.00	1.00E+00
FBgn0040283	SMC1	3037	-0.64	1.85E-06	-0.02	8.19E-01	0.00	1.00E+00
FBgn0261789	SmD2	1956	0.73	2.12E-06	0.04	6.65E-01	0.00	1.00E+00
FBgn0000426	SmF	1111	0.73	3.23E-05	0.01	9.46E-01	0.00	1.00E+00
FBgn0003444	smo	2301	-0.63	3.91E-07	-0.10	2.03E-01	0.00	1.00E+00
FBgn0036282	Smyd4-2	19	1.33	8.38E-04	1.15	6.49E-03	0.00	1.00E+00
FBgn0086129	snama	1490	-0.65	8.22E-09	0.02	8.84E-01	0.01	1.00E+00
FBgn0011288	Snap25	98	-0.08	7.87E-01	4.02	5.30E-61	-0.02	8.64E-01
FBgn0030026	sni	488	0.71	2.21E-08	0.07	3.85E-01	0.00	1.00E+00
FBgn0083027	snoRNA:Psi18S-531	228	0.76	7.84E-06	0.01	9.54E-01	-0.99	6.07E-15
FBgn0065099	snRNA:7SK	74	0.77	8.34E-03	0.12	3.03E-01	-0.01	1.00E+00
FBgn0041721	snRNA:U12	72	0.99	6.65E-04	0.25	9.48E-02	0.02	9.19E-01
FBgn0052758	Snx27	1056	-0.64	4.13E-06	0.00	9.90E-01	0.00	1.00E+00
FBgn0003462	Sod1	4607	0.82	6.89E-09	-0.01	9.62E-01	-0.02	7.72E-01
FBgn0033631	Sod3	3675	0.63	1.89E-07	-0.08	3.00E-01	-0.01	1.00E+00
FBgn0042630	Sox21b	15	0.01	9.47E-01	-0.84	2.59E-02	0.01	1.00E+00
FBgn0020378	Sp1	380	0.20	4.39E-01	-2.11	5.44E-08	0.01	1.00E+00
FBgn0035710	SP1173	2433	0.10	5.98E-01	0.11	1.58E-01	0.66	3.68E-07
FBgn0028562	SPARC	1433	0.81	2.04E-06	-0.34	1.04E-02	0.00	1.00E+00
FBgn0040623	Spase12	1070	0.90	4.41E-07	0.02	8.81E-01	-0.01	1.00E+00
FBgn0039172	Spase22-23	2345	0.62	4.08E-07	0.01	9.32E-01	-0.01	1.00E+00
FBgn0037025	Spc105R	1970	-0.64	3.39E-06	0.00	9.82E-01	0.02	6.88E-01
FBgn0031549	Spindly	889	-0.77	1.08E-11	-0.58	2.41E-11	-0.47	5.60E-07
FBgn0003483	spn-E	262	0.05	8.37E-01	0.95	2.55E-08	0.01	1.00E+00
FBgn0039795	Spn100A	2226	0.21	4.08E-01	-0.60	2.38E-02	-0.01	1.00E+00
FBgn0028990	Spn27A	3624	0.72	4.88E-15	-0.12	5.13E-02	0.00	1.00E+00
FBgn0033115	Spn42De	140	1.10	3.10E-06	0.08	3.73E-01	0.00	1.00E+00
FBgn0024294	Spn43Aa	3847	0.81	1.21E-04	-0.01	9.37E-01	-0.02	8.73E-01

FBgn0033574	Spn47C	40	-2.01	4.50E-05	2.30	2.05E-07	0.00	1.00E+00
FBgn0003486	spo	14	-0.61	1.57E-02	0.01	9.14E-01	0.00	1.00E+00
FBgn0263987	spoon	4782	-0.94	1.55E-08	-0.01	9.13E-01	0.00	1.00E+00
FBgn0031260	Spp	2973	0.59	1.42E-06	-0.01	9.49E-01	0.00	1.00E+00
FBgn0032362	spz4	38	-1.26	9.87E-05	-0.02	8.49E-01	0.00	1.00E+00
FBgn0263396	sqd	24176	-1.21	2.03E-15	0.01	9.25E-01	0.00	1.00E+00
FBgn0037248	srl	2653	-0.64	2.17E-06	-0.05	5.95E-01	0.00	1.00E+00
FBgn0011481	Ssdp	3514	-1.21	3.35E-12	-0.02	8.47E-01	0.00	1.00E+00
FBgn0037665	St2	912	0.77	6.07E-04	-0.05	5.42E-01	-0.09	2.64E-01
FBgn0265052	St3	62	0.34	1.70E-01	1.40	5.50E-08	1.21	3.44E-06
FBgn0003517	sta	62664	1.36	1.84E-26	-0.14	8.33E-02	0.00	1.00E+00
FBgn0086779	step	1533	-0.70	1.73E-06	0.05	5.62E-01	0.00	1.00E+00
FBgn0048692	Stk	960	-0.69	1.41E-04	0.03	7.66E-01	0.00	1.00E+00
FBgn0020299	slumps	1216	-0.16	1.84E-01	-0.61	1.14E-13	-0.01	1.00E+00
FBgn0086708	stv	2256	0.16	5.24E-01	-1.48	4.91E-10	0.01	1.00E+00
FBgn0014388	sty	1582	-0.70	7.56E-06	0.04	6.80E-01	0.00	1.00E+00
FBgn0003567	su(Hw)	2513	-0.63	1.09E-08	-0.01	9.69E-01	0.00	1.00E+00
FBgn0014391	sun	1616	1.01	5.14E-09	0.01	9.64E-01	-0.01	1.00E+00
FBgn0028675	Sur	11	-0.09	6.53E-01	0.58	4.64E-02	0.00	1.00E+00
FBgn0261403	sxc	3212	-0.69	8.92E-08	-0.05	6.02E-01	0.00	1.00E+00
FBgn0038826	Syp	23681	-1.10	4.58E-08	-0.03	7.82E-01	0.00	1.00E+00
FBgn0028400	Syt4	264	7.49	1.96E-06	4.89	1.96E-08	6.07	2.24E-12
FBgn0028398	Taf10	549	0.66	1.19E-04	-0.01	9.18E-01	0.00	1.00E+00
FBgn0004406	tam	490	0.29	8.95E-02	0.72	1.51E-09	0.01	8.66E-01
FBgn0021795	Tapdelta	3819	0.58	3.60E-05	-0.02	8.76E-01	0.00	1.00E+00
FBgn0034451	TBCB	731	0.19	2.42E-01	0.68	1.75E-10	0.58	3.63E-07
FBgn0285892	tea	768	-0.63	4.20E-05	-0.03	7.57E-01	0.00	1.00E+00
FBgn0261953	TfAP-2	180	0.34	1.52E-01	-2.03	5.20E-06	0.01	1.00E+00
FBgn0013347	TfIIA-S	1676	0.94	1.18E-09	0.02	8.85E-01	0.00	1.00E+00
FBgn0026869	Thd1	3729	-0.71	8.71E-05	-0.03	7.71E-01	0.01	1.00E+00
FBgn0261560	Thor	335	1.02	1.07E-03	-0.09	4.00E-01	0.00	1.00E+00
FBgn0032988	Tif1A	2210	-0.65	1.22E-11	-0.06	4.87E-01	0.00	1.00E+00
FBgn0027359	Tim8	995	0.89	3.09E-07	0.03	7.23E-01	0.00	1.00E+00
FBgn0025879	Timp	183	1.31	4.85E-08	0.00	9.93E-01	0.00	1.00E+00
FBgn0004841	TKR86C	16	2.44	5.62E-04	6.69	3.31E-07	6.67	9.56E-07
FBgn0003721	Tm1	10585	-0.87	8.91E-13	-0.01	9.30E-01	0.00	1.00E+00
FBgn0267796	Tmc	187	-1.09	6.16E-06	-0.01	9.30E-01	-0.01	9.67E-01
FBgn0026160	tna	4864	-0.86	1.63E-08	-0.01	9.53E-01	0.00	1.00E+00
FBgn0033357	Tom7	1314	1.19	2.26E-12	0.04	6.63E-01	0.00	1.00E+00
FBgn0037751	topi	17	0.16	2.73E-01	3.33	7.94E-09	0.01	1.00E+00
FBgn0086355	Tpi	3109	0.75	5.13E-06	0.06	4.99E-01	0.00	1.00E+00
FBgn0031692	TpnC25D	30	-0.49	4.92E-02	-0.68	4.79E-02	-0.05	5.00E-01
FBgn0086674	Tpst	715	-1.40	5.38E-11	0.03	7.58E-01	0.00	1.00E+00
FBgn0030748	Traf1like	115	-0.73	5.07E-03	-0.08	4.80E-01	0.00	1.00E+00
FBgn0026319	Traf4	481	0.24	1.13E-01	0.76	4.59E-17	0.00	1.00E+00
FBgn0261793	Trf2	2420	-0.99	3.98E-07	0.03	7.55E-01	0.00	1.00E+00
FBgn0013263	Trf	369	-1.26	3.45E-08	-0.01	9.05E-01	0.00	1.00E+00
FBgn0050343	Tsen15	167	-1.57	1.05E-14	0.02	8.94E-01	0.00	1.00E+00
FBgn0003866	tsh	5545	-0.66	4.17E-20	-0.16	2.69E-03	0.00	1.00E+00
FBgn0031850	Tsp	2665	0.69	2.98E-10	-0.34	3.00E-04	0.00	1.00E+00
FBgn0032943	Tsp39D	1560	-0.58	8.20E-05	0.01	9.37E-01	0.00	1.00E+00
FBgn0029507	Tsp42Ed	56	0.33	1.26E-01	1.57	7.02E-04	-0.02	8.30E-01
FBgn0033130	Tsp42Ei	87	0.57	2.08E-02	-0.61	1.22E-02	-0.02	7.84E-01
FBgn0043550	Tsp68C	24	0.92	4.23E-03	3.43	4.52E-12	0.04	5.83E-01
FBgn0027865	Tsp96F	1091	-0.73	1.13E-04	0.00	9.93E-01	0.00	1.00E+00
FBgn0032744	Ttc19	220	-0.65	9.39E-04	1.15	1.18E-14	0.01	1.00E+00
FBgn0051108	TTL5	618	-0.89	5.37E-10	0.00	9.85E-01	0.00	1.00E+00
FBgn0052364	tut	126	-0.50	3.44E-02	-0.04	6.75E-01	-3.19	3.46E-25
FBgn0039434	TwdIM	16	0.92	5.02E-03	0.34	1.02E-01	2.59	7.18E-05
FBgn0029170	TwdIT	119	0.43	7.55E-02	-1.52	1.34E-06	-0.11	2.46E-01
FBgn0003900	twi	636	0.03	8.92E-01	-0.69	5.16E-11	-0.12	1.00E-01
FBgn0262801	twr	2970	0.60	6.91E-05	-0.03	8.10E-01	-0.01	1.00E+00
FBgn0034636	twz	761	0.58	1.40E-03	-0.01	9.54E-01	0.03	6.00E-01
FBgn0029996	UbcE2H	1978	-0.73	9.00E-09	0.15	6.58E-02	0.01	1.00E+00
FBgn0026076	UBL3	1245	-0.79	6.80E-08	-0.02	8.24E-01	0.00	1.00E+00
FBgn0003944	Ubx	347	-0.41	9.19E-02	-1.48	4.15E-08	0.00	1.00E+00
FBgn0262124	uex	1998	-0.87	4.48E-09	0.01	9.32E-01	0.00	1.00E+00
FBgn0040259	Ugt302C1	1204	-0.23	8.13E-02	0.70	2.85E-15	0.00	1.00E+00
FBgn0040251	Ugt302K1	820	-1.93	1.49E-26	2.29	4.84E-76	0.00	1.00E+00
FBgn0040091	Ugt317A1	411	0.43	6.49E-03	-1.04	4.52E-19	-1.12	4.52E-23
FBgn0045800	Uhg1	543	-0.82	8.92E-04	0.04	6.63E-01	0.00	1.00E+00
FBgn0083124	Uhg4	570	-0.83	2.41E-04	-0.02	8.43E-01	0.00	1.00E+00
FBgn0025549	unc-119	1224	-0.71	1.70E-13	-0.09	1.90E-01	0.00	1.00E+00
FBgn0025726	unc-13	8539	-0.16	3.82E-01	3.08	1.66E-117	0.01	9.70E-01
FBgn0024184	unc-4	56	0.21	1.73E-01	-1.78	2.44E-04	0.01	1.00E+00
FBgn0263352	Unr	3986	-1.51	8.25E-12	-0.01	9.12E-01	0.00	1.00E+00
FBgn0030904	upd2	26	0.21	1.41E-01	2.98	6.12E-04	0.00	1.00E+00
FBgn0053542	upd3	34	0.01	9.69E-01	2.77	2.35E-07	0.01	1.00E+00
FBgn0034245	UOCR-6.4	522	0.83	2.12E-05	0.02	8.90E-01	0.00	1.00E+00

FBgn0038271	UQCR-C1	4523	0.84	1.29E-13	0.03	7.62E-01	0.00	1.00E+00
FBgn0036728	UQCR-Q	1447	1.88	3.34E-40	0.00	9.79E-01	0.00	1.00E+00
FBgn0033428	Urod	1510	0.64	3.48E-06	0.02	8.25E-01	0.00	1.00E+00
FBgn0260749	Utx	1479	-0.75	1.33E-17	-0.06	4.40E-01	0.00	1.00E+00
FBgn0050101	Vajk4	36	1.18	5.97E-04	0.14	2.34E-01	0.00	1.00E+00
FBgn0035942	VaiRS-m	232	0.60	4.18E-04	-0.01	9.18E-01	0.00	1.00E+00
FBgn0029687	Vap33	7747	-0.78	2.49E-07	0.01	9.16E-01	0.00	1.00E+00
FBgn0053200	VepD	48	-1.91	1.02E-06	0.11	3.01E-01	0.00	1.00E+00
FBgn0262524	ver	296	-0.22	2.25E-01	2.11	4.76E-65	0.00	1.00E+00
FBgn0261341	verm	9505	0.62	9.38E-04	-0.13	1.70E-01	0.00	1.00E+00
FBgn0033911	VGAT	134	-0.09	7.49E-01	0.64	1.29E-03	-0.63	6.34E-03
FBgn0267975	vib	1469	-1.04	1.87E-26	0.04	6.69E-01	-0.01	1.00E+00
FBgn0024183	vig	3544	-0.78	1.04E-08	0.01	9.06E-01	0.00	1.00E+00
FBgn0259078	vic	2238	-0.62	3.56E-08	-0.03	7.54E-01	0.00	1.00E+00
FBgn0052350	Vps11	1027	-0.65	2.49E-03	0.00	9.72E-01	0.00	1.00E+00
FBgn0260987	vid	2064	-0.95	1.33E-21	-0.06	4.50E-01	-0.01	1.00E+00
FBgn0266848	wap	3147	-0.66	1.92E-08	-0.03	7.45E-01	0.00	1.00E+00
FBgn0027492	wdb	5970	-0.84	1.30E-11	0.01	9.22E-01	0.00	1.00E+00
FBgn0027499	wde	2735	-0.89	1.99E-07	0.02	8.39E-01	0.00	1.00E+00
FBgn0011739	wts	1411	-0.66	9.62E-07	0.02	8.38E-01	0.00	1.00E+00
FBgn0261113	Xrp1	10923	-0.55	6.59E-06	1.08	1.69E-26	0.11	1.21E-01
FBgn0041711	yellow-e	215	0.87	5.43E-05	-0.03	7.39E-01	0.00	1.00E+00
FBgn0041710	yellow-f	83	-0.23	3.71E-01	-0.62	3.15E-02	-0.05	5.27E-01
FBgn0039896	yellow-h	56	0.51	4.40E-02	2.46	1.25E-10	-0.01	1.00E+00
FBgn0040060	yip7	41	-0.04	6.60E-01	-0.97	3.20E-02	-0.02	9.62E-01
FBgn0039261	Ythdf	2954	-0.66	9.40E-09	-0.04	6.25E-01	0.00	1.00E+00
FBgn0004606	zfh1	688	-0.13	5.56E-01	-0.63	2.67E-04	0.00	1.00E+00
FBgn0266709	Zmynd10	117	-1.05	1.89E-06	-0.13	2.22E-01	0.00	1.00E+00
FBgn0011642	Zyx	2299	-1.25	1.45E-35	0.00	9.77E-01	0.00	1.00E+00

**Supplementary Table 3: Ontology of genes deregulated in *corto*<sup>L1/corto</sup><sup>420</sup> and *uL11*<sup>K3A</sup> mutants**

CC: Cellular Component; BP: Biological Process; MF: Molecular Function

<i>Expression in corto</i> <sup>L1/corto</sup> <sup>420</sup>	<i>GO term</i>	<i>Count</i>	<i>%</i>	<i>p-value</i>	<i>Benjamini</i>
up-regulated	CC~GO:0005840~ribosome	61	12.95%	1.00E-61	2.00E-59
up-regulated	CC~GO:0022625~cytosolic large ribosomal subunit	38	8.07%	3.90E-39	3.90E-37
up-regulated	CC~GO:0022626~cytosolic ribosome	41	8.70%	2.10E-23	1.00E-21
down-regulated	CC~GO:0006468~protein phosphorylation	30	6.62%	7.60E-09	9.30E-06
down-regulated	BP~GO:0004674~protein serine/threonine kinase activity	23	5.08%	1.20E-08	2.10E-06
down-regulated	MF~GO:0004672~protein kinase activity	19	4.19%	4.00E-06	4.60E-04
down-regulated	MF~GO:0005524~ATP binding	45	9.93%	2.30E-04	1.30E-02
down-regulated	BP~GO:0045732~positive regulation of protein catabolic process	5	1.10%	1.10E-03	6.60E-02
down-regulated	BP~GO:0045475~locomotor rhythm	9	1.99%	9.60E-04	6.20E-02
down-regulated	CC~GO:0005834~heterotrimeric G-protein complex	5	1.10%	7.10E-04	3.00E-02
down-regulated	MF~GO:0004871~obsolete signal transducer activity	7	1.55%	1.40E-03	5.30E-02
down-regulated	MF~GO:0031683~G-protein beta/gamma-subunit complex binding	4	0.88%	1.90E-03	5.50E-02
down-regulated	BP~GO:0030307~positive regulation of cell growth	7	1.55%	2.70E-04	2.40E-02
down-regulated	CC~GO:0070469~respirasome	6	1.32%	9.60E-05	4.80E-03

<i>Expression in uL11</i> <sup>K3A</sup>	<i>GO term</i>	<i>Count</i>	<i>%</i>	<i>p-value</i>	<i>Benjamini</i>
up-regulated	BP~GO:0006749~glutathione metabolic process	11	4.21%	1.60E-09	6.50E-07
up-regulated	MF~GO:0004602~glutathione peroxidase activity	9	3.45%	2.80E-08	3.30E-06
up-regulated	MF~GO:0004364~glutathionetransferase activity	10	3.83%	2.90E-08	3.30E-06
up-regulated	BP~GO:0000723~telomere maintenance	6	2.30%	1.60E-05	3.30E-03
up-regulated	BP~GO:0006310~DNA recombination	5	1.92%	6.90E-04	9.30E-02
down-regulated	MF~GO:0004035~alkaline phosphatase activity	5	3.18%	4.80E-05	4.10E-03
down-regulated	CC~GO:0009986~cell surface	7	4.46%	2.60E-04	1.40E-02
down-regulated	BP~GO:0007480~imaginal disc-derived leg morphogenesis	8	5.10%	2.60E-06	4.60E-04
down-regulated	MF~GO:0043565~sequence-specific DNA binding	13	8.28%	5.70E-05	4.10E-03
down-regulated	BP~GO:0006355~regulation of transcription, DNA-templated	14	8.92%	2.50E-04	1.50E-02
down-regulated	BP~GO:0006351~transcription, DNA-templated	13	8.28%	5.10E-04	2.50E-02
down-regulated	MF~GO:0003700~DNA-binding transcription factor activity	11	7.01%	1.40E-03	6.90E-02



**Supplementary Table 4: Enrichment for Mad sites in the *cis*-regulatory sequences of genes deregulated in *uL11*<sup>K3Y</sup> mutants. 21 nucleotide-long motifs shared by 39 of the 84 *uL11*<sup>K3Y</sup> deregulated genes (E-value: 2.1e-23).**

Gene Id	Gene symbol	Expression in <i>uL11</i> <sup>K3Y</sup> versus <i>w</i> <sup>11118</sup>	Strand	Distance from the TSS	p-value		Sites	
FBgn0267160	<i>asRNA:CR45600</i>	up	-	-1367	1.24E-06	CAGCGAAGGA	GACGCCGTCCAAGCCGTCAACC	ACTTTGTGAG
FBgn0034972	<i>CG10339</i>	up	-	-1148	2.21E-07	CATTACCACT	GCCACCGCCGCCGATGTGCC	GTTCTCTTCG
FBgn0036589	<i>CG13067</i>	up	+	-1578	3.18E-10	TGCTACACC	GCTCCAGTTGCCGCCGTGCC	TATACCGCTC
FBgn0040658	<i>CG13516</i>	down	+	621	1.65E-06	GGCTCCAGCG	GTTTCCGCACCAGCAATCGCC	CCAGCACGAC
FBgn0037127	<i>CG14566</i>	up	+	257	5.47E-09	CTTCGACGAG	CTGCTGCTCCCTGGCCGCC	GGGCCACAC
FBgn0035409	<i>CG14963</i>	up	-	-1497	6.83E-08	AGTTTCCGCT	GCTGCCTTAGCAGCCCTCGC	TTCAGTTCAT
FBgn0033777	<i>CG17574</i>	down	-	-1371	1.19E-07	CAGCAAGAGC	GGCGCCGCCGGAGCAGCCGCC	TCTTCAGCCG
FBgn0017448	<i>CG2187</i>	up	-	-179	1.54E-06	ATATTCATCG	GTTGCAGTTCAAGCTATTGCC	GATAACCCAA
FBgn0034931	<i>CG2812</i>	up	-	836	1.35E-08	AGATCTTGCA	GTCCCCGCCGCCGCCCTGCC	CAGCAGCCGG
FBgn0052354	<i>CG32354</i>	up	+	-51	4.64E-08	GCTCTGCTCT	GCCGTCGCCGACTGCCGTGCC	TTTACCCAT
FBgn0052532	<i>CG32532</i>	up	+	655	1.30E-07	GCAGGACAGC	GCTGCTTCTGCCGCCGTGCAC	GCGTCTGCT
FBgn0085276	<i>CG34247</i>	down	-	-1572	3.44E-08	TCAAGACTCG	GCCGCCAGAGCACCTGTGCC	CGAAGCTCAA
FBgn0085411	<i>CG34382</i>	down	-	374	3.64E-07	GACTACGATG	GTCGCATCTGCTGCATCTGCA	TCGACATTG
FBgn0085452	<i>CG34423</i>	down	-	265	1.57E-12	GGATGGATCC	GCCGCCGCCGCCCGTTGCC	GGCTCCACTG
FBgn0260768	<i>CG42566</i>	down	+	-1898	1.09E-07	TGATTCTCCA	GCTGCTGCCCTTCACTGCC	TTCCCTACTT
FBgn0038784	<i>CG4362</i>	down	+	57	2.03E-06	GCATGACCTT	GCTGCTGCCATCGGGCTGCA	GCAGATCGAC
FBgn0036587	<i>CG4950</i>	down	-	-1566	3.18E-10	TGCTACACC	GCTCCAGTTGCCGCCGTGCC	TATACCGCTC
FBgn0039430	<i>CG5455</i>	down	-	-829	1.70E-07	AGGACGAGGA	GCTGGAGGAGCTGCTGTCCC	GGAACTGGTG
FBgn0036121	<i>CG6310</i>	down	+	-670	1.67E-08	ATATGGACGA	GCTGCCAGCGCAGCTTTCGCC	AAAGCTTTTG
FBgn0028533	<i>CG7953</i>	down	-	105	2.61E-07	TGATCCGCCA	GCTCCAACAGACGCTGTCCA	CCTCGTTGGG
FBgn0038405	<i>CG8927</i>	up	-	-1482	8.24E-08	ACTTGGATCC	GGTGCATCTGCCTCCACTGCC	TTCGACTCTA
FBgn0036109	<i>Cpr67Fa2</i>	down	+	-1471	8.61E-07	CGCTATCCTG	GCCTCCGCTACGGTCCGCC	ACCTACAACC
FBgn0262636	<i>dat1</i>	up	-	-1275	6.86E-07	GGTAACGTTA	CCGCCACCTCTGCTGTCAA	TCGATTTTGG
FBgn0062928	<i>hpRNA:CR33940</i>	down	+	-834	2.61E-07	GTGGGCGGTA	GGTGGTGGTGCATCTGTGCA	CTCGTTGGCA
FBgn0286204	<i>ich</i>	up	-	-1332	1.33E-06	GGTTGATATG	GGTACTTTCGCCGCCCTCC	GCTGTATCCG
FBgn0039459	<i>IntS12</i>	up	+	108	1.20E-11	CGCAAATATA	GCCGCCGCTGCTGCAGCTGCC	CAAGAAGTGG
FBgn0034098	<i>krimp</i>	up	+	-747	4.85E-09	TGGTGGATCT	GTCGCCGGTGACCCTGCTGCC	GTCAGTGAAG
FBgn0259993	<i>lncRNA:CR42491</i>	down	+	-1111	1.73E-11	GAAGAAGGCC	GCTCCCAGCCGCCGCCGCC	AAGGGCAAGG
FBgn0039851	<i>mey</i>	up	+	-80	3.40E-09	AAGAGAGTTA	GTCGCCGCTGCCTCTGCCGGC	GTCGCTTGGG
FBgn0035976	<i>PGRP-LC</i>	down	-	-1328	1.09E-07	CATACGTGTT	GGCCCACTCCAGCCGCCGCC	AACGTAGATG
FBgn0038966	<i>pinta</i>	up	-	-839	2.38E-10	AACTGTTGCT	GCTGCTGCTGCTGCTGCA	GATATTGCTG
FBgn0020907	<i>Scp2</i>	up	-	-158	5.02E-07	CGTCTCGTCT	GACTCTCCGACGCCTCTGCA	CTCGTCATGG
FBgn0083027	<i>snoRNA:Psi18S-531</i>	down	+	-1627	1.73E-11	GAAGAAGGCC	GCTCCCAGCCGCCGCCGCC	AAGGGCAAGG
FBgn0265052	<i>St3</i>	up	-	-860	9.05E-08	TCGAAGGAGA	GGTGTCTGCTGCATCTGTGCA	TCTGCTCCTG
FBgn0034451	<i>TBCB</i>	up	-	-1977	2.84E-07	TCAAACAAAA	GCTGCTGGTCTCCAGCTCCA	CAGCATATTG
FBgn0004841	<i>TkR86C</i>	up	-	-9	6.13E-09	TGTCTTAGC	GCTGCAAGTCCGCCGCCGAC	TGAATGCTTT
FBgn0052364	<i>tut</i>	down	-	-622	2.67E-09	TCAAGTGCTT	GCTGCCGCTGCTGCTGCTCA	TTTTCTAAT
FBgn0039434	<i>Twd1M</i>	up	-	313	3.69E-10	CTCCGATGCT	GCCGCCCTCCGATGCTGCCGCC	TCCGATGCTG
FBgn0033911	<i>VGAT</i>	down	+	399	1.35E-08	ACGCCTTCTT	GACACCAACCGACGCCGCCGCC	ATCAGGCCAA