



HAL
open science

Insights into Clinical, Genetic, and Pathological Aspects of Hereditary Spastic Paraplegias: A Comprehensive Overview

Liena E O Elsayed, Isra Zuhair Eltazi, Ammar E Ahmed, Giovanni Stevanin

► To cite this version:

Liena E O Elsayed, Isra Zuhair Eltazi, Ammar E Ahmed, Giovanni Stevanin. Insights into Clinical, Genetic, and Pathological Aspects of Hereditary Spastic Paraplegias: A Comprehensive Overview. *Frontiers in Molecular Biosciences*, 2021, 8, 10.3389/fmolb.2021.690899 . hal-03481081

HAL Id: hal-03481081

<https://hal.sorbonne-universite.fr/hal-03481081v1>

Submitted on 15 Dec 2021

HAL is a multi-disciplinary open access archive for the deposit and dissemination of scientific research documents, whether they are published or not. The documents may come from teaching and research institutions in France or abroad, or from public or private research centers.

L'archive ouverte pluridisciplinaire **HAL**, est destinée au dépôt et à la diffusion de documents scientifiques de niveau recherche, publiés ou non, émanant des établissements d'enseignement et de recherche français ou étrangers, des laboratoires publics ou privés.



Insights into Clinical, Genetic, and Pathological Aspects of Hereditary Spastic Paraplegias: A Comprehensive Overview

Liena E. O. Elsayed^{1,2*}, Isra Zuhair Eltazi², Ammar E. Ahmed² and Giovanni Stevanin^{3,4,5*}

¹Department of Basic Sciences, College of Medicine, Princess Nourah bint Abdulrahman University [PNU], Riyadh, Saudi Arabia, ²Faculty of Medicine, University of Khartoum, Khartoum, Sudan, ³Institut du Cerveau – Paris Brain Institute - ICM, Sorbonne Université, INSERM, CNRS, APHP, Paris, France, ⁴CNRS, INCIA, Université de Bordeaux, Bordeaux, France, ⁵Ecole Pratique des Hautes Etudes, EPHE, PSL Research University, Paris, France

OPEN ACCESS

Edited by:

David Pla-Martín,
University Hospital of Cologne,
Germany

Reviewed by:

Carmen Espinós,
Principe Felipe Research Center
(CIPF), Spain
Alan Mackay-Sim,
Griffith University, Australia

*Correspondence:

Liena E. O. Elsayed
leelsayed@pnu.edu.sa
Giovanni Stevanin
giovanni-b.stevanin@inserm.fr

Specialty section:

This article was submitted to
Molecular Diagnostics and
Therapeutics,
a section of the journal
Frontiers in Molecular Biosciences

Received: 04 April 2021

Accepted: 19 October 2021

Published: 26 November 2021

Citation:

Elsayed LEO, Eltazi IZ, Ahmed AE and Stevanin G (2021) Insights into Clinical, Genetic, and Pathological Aspects of Hereditary Spastic Paraplegias: A Comprehensive Overview. *Front. Mol. Biosci.* 8:690899. doi: 10.3389/fmolb.2021.690899

Hereditary spastic paraplegias (HSP) are a heterogeneous group of motor neurodegenerative disorders that have the core clinical presentation of pyramidal syndrome which starts typically in the lower limbs. They can present as pure or complex forms with all classical modes of monogenic inheritance reported. To date, there are more than 100 loci/88 spastic paraplegia genes (SPG) involved in the pathogenesis of HSP. New patterns of inheritance are being increasingly identified in this era of huge advances in genetic and functional studies. A wide range of clinical symptoms and signs are now reported to complicate HSP with increasing overall complexity of the clinical presentations considered as HSP. This is especially true with the emergence of multiple HSP phenotypes that are situated in the borderline zone with other neurogenetic disorders. The genetic diagnostic approaches and the utilized techniques leave a diagnostic gap of 25% in the best studies. In this review, we summarize the known types of HSP with special focus on those in which spasticity is the principal clinical phenotype (“SPGn” designation). We discuss their modes of inheritance, clinical phenotypes, underlying genetics, and molecular pathways, providing some observations about therapeutic opportunities gained from animal models and functional studies. This review may pave the way for more analytic approaches that take into consideration the overall picture of HSP. It will shed light on subtle associations that can explain the occurrence of the disease and allow a better understanding of its observed variations. This should help in the identification of future biomarkers, predictors of disease onset and progression, and treatments for both better functional outcomes and quality of life.

Keywords: spastic paraplegia, clinical spectrum, genetic heterogeneity, phenotype-genotype correlation, molecular mechanisms, diagnostic yield, diagnostic gap, allelic variants

INTRODUCTION

Hereditary spastic paraplegias (HSP) are a group of heterogeneous neurodegenerative disorders which are characterized by an insidiously progressive weakness and spasticity of the lower extremities as their core defining clinical features. They constitute the second most frequent motor neuron disease (MND) with an estimated prevalence of 3–10/100,000 in most populations (Noreau et al., 2014). HSPs are perfect models for understanding current challenges in inherited neurodegenerative disorders, as they overlap genetically with different neurogenetic diseases, although they were previously considered as completely separate entities (Harding, 1983).

Classification of HSP

Classical classification of HSP was historically based on the clinical phenotype and the mode of inheritance (Harding, 1983). Recently, there has been an increasing tendency to involve the underlying molecular pathogenetic mechanisms in the categorization of HSP with multiple trials to establish classifications and groupings of identified HSP forms/genes based on the affected function (Lo Giudice et al., 2014; Noreau et al., 2014; Vallat et al., 2016; de Souza et al., 2017; Blackstone, 2018; Boutry et al., 2019a; Darios et al., 2020; Darios and Stevanin, 2020). More recently, machine-learning approaches were also used in their clinico-genetic stratification (Vavouraki et al., 2021). This group of diseases suffers from the fact that it gathers diseases in which spasticity/pyramidal signs are sometimes only part of the clinical phenotype such as some neurodevelopmental disorders due to *AP4n* genes mutations, and, at the other end of the spectrum, disorders in which the spasticity/pyramidal signs are the core and sometimes the only symptoms in patients, such as most SPG4 and SPG8 patients. In addition, spasticity and pyramidal signs are often observed in almost all neurogenetic conditions at some point of the disease evolution. A nosology restricted to HSP disorders will then be inefficient and a new nosology of all neurogenetic conditions is then necessary to take into account these now common observations in almost all neurogenetic conditions (Cassis et al., 2015; Synofzik and Schüle, 2017; Elsayed et al., 2019b).

All current classifications are therefore far from optimum, and are just used to give a clue about the disease and its clinical presentation and molecular basis.

The Landscape of HSP Genetics

HSP shows remarkable genetic and clinical heterogeneity and is by far the most heterogeneous condition together with peripheral neuropathies. It is transmitted *via* all classical modes of monogenic inheritance which include autosomal dominant (AD), autosomal recessive (AR), recessive or dominant X-Linked (X-L), and mitochondrial/maternal transmission. The prevalence of AD HSP varies between 0.5 and 5.5/100,000 whereas that of the AR HSP ranges from 0.3 to 5.3/100,000 in hospital-based studies and 0.6 to 2.6/100,000 in multisource studies (Ruano et al., 2014). X-linked and mitochondrial inheritance are rare and mainly affect congenital cases; this is particularly the case with X-linked inheritance.

While AD HSP is more frequent in northern Europe, AR HSP predominates in highly consanguineous populations with one of the highest values reported in Tunisia, where it is probably attributed to the high rates of consanguinity in Northern Africa (Ben Hamida et al., 1986; Boukhris et al., 2008, 2009; Ruano et al., 2014).

To date, more than 100 loci/88 genes are known to be implicated in the pathogenesis of HSP. Of those, 83 clinical-genetic forms have the designation spastic paraplegia gene “n” or SPGn. However, there are more than 25 genes that have been reported to cause HSP but not assigned an SPG designation including the four mitochondrial genes (*MTND4*, *MTTI*, *MTCO3*, *MTATP6*) that were associated with HSP/HSP-like phenotypes. In 12 of the 83 SPG forms, the underlying gene/protein is not yet identified (Klebe et al., 2015; Tesson et al., 2015; de Souza et al., 2017; Boutry et al., 2019a).

Consanguinity has been of great help in identifying HSP causative genes since only 17 HSP subtypes show AD inheritance whereas the number of identified AR HSP subtypes is progressively increasing mounting to 53 HSP forms. X-L inheritance is relatively rare being reported in five forms only, all with recessive inheritance. SPG4 is the commonest AD HSP form in many populations, particularly in Caucasians. It accounts for 17–79% of AD HSP cases with monoallelic forms of *KIF1A* variant carriers, SPG3A and SPG31 coming next (Schüle et al., 2016; Burguez et al., 2017; Dong et al., 2018; Boutry et al., 2019a; Méreaux et al., 2021b). The collective frequency of SPG4 together with SPG3A amounted to 90% of the AD HSP in some series (Dong et al., 2018). On the other hand, SPG11 and SPG7 are the most frequent AR HSP subtypes followed by SPG15 and SPG5 (Ruano et al., 2014; Tesson et al., 2015; Boutry et al., 2019b; Coarelli et al., 2019; Du, 2021).

HSP can also be caused by mutations in “non-SPG” genes. The majority of the “non-SPG” forms have an original phenotype and HSP stands as an allelic presentation, frequently reported in a single family (Table 1). Although the non-SPG forms will be included in multiple sections of this article, the focus will be on the 83 SPG forms.

Over the last decade, and with the advent of next-generation sequencing (NGS)-based techniques, the genetic basis of HSP appears more complicated than previously thought. HSP forms with mixed inheritance (AD/AR) modes have been observed in six HSP forms. Moreover, a subtle mixed inheritance pattern with one dominating mode of inheritance and probable allele-dose-dependent variability in the expressed clinical phenotype was also demonstrated in some forms, adding to the genetic heterogeneity, and contributing to the complexity, of the whole picture. An example of the allele-dose-dependent variability was clear in the Kinesin encoding gene *KIF1C*, known to cause HSP type 58 (SPG58). *KIF1C* was shown to present with mild or subclinical dominant phenotype in heterozygous carriers, with the same mutations that resulted in more severe recessive phenotypes in their homozygous states (Oteyza et al., 2014). Other examples among the frequent HSP forms are related to recessive and dominantly inherited variants in *SPG7* and *KIF1A* (Klebe et al.,

TABLE 1 | Table summarizing HSP forms associated with non-SPG genes and the main allelic phenotypes associated with causative variants in these genes.

Gene	Disease	HSP Phenotype	HSP mode of inheritance	Families with HSP	Reference
<i>BICD2</i>	AD: Spinal muscular atrophy, lower extremity-predominant, 2A, and 2B [SMALED2]	Complicated HSP Amyotrophy	AD	One German Family, four patients	Oates et al. (2013)
<i>ACO2</i>	Optic Atrophy 9 [OA9] (AR) Infantile Cerebellar-Retinal Degeneration (AR)	Complicated HSP Intellectual disability and Microcephaly	AR	One Arab-Bedouin family two patients	Bouwkamp et al. (2018)
<i>RNF170</i>	Spastic ataxia	Complicated HSP Spastic paraplegia andataxia	AR	Five families, 11 patients	Wagner et al. (2019)
<i>HACE1</i>	Neurodevelopmental disorders [Simplex, AR]	Complicated HSP	AR	Two Families [Pakistani: Five patients, German three patients]	Akawi et al. (2015); Hollstein et al. (2015)
		Spastic paraplegia and psychomotor retardation with or without seizures [SPPRS]		Two Families [two, three patients]	
<i>GAD1</i>	-	Complicated HSP CPSQ1: Symmetrical spastic cerebral palsy	AR	Two Pakistani families [two, four patients]	Lynex et al. (2004)
<i>EXOSC3</i>	Pontocerebellar hypoplasia (AR)	Complicated HSP	AR	Two Families [Arab origin: four patients, Bangladesh: two patients]	Zanni et al. (2013); Halevy et al. (2014)
<i>ALS2</i>	Juvenile ALS (AR)	Complicated HSP	AR	Families from Algeria, France Saudi Arabia Pakistan Sudan, Italy Iran	Eymard-Pierre et al. (2002); Racis et al. (2014); Wakil et al. (2014); Daud et al. (2016); Elsayed et al. (2016b); Helal et al. (2018); Simone et al. (2018)
<i>LYST</i>	Chediak-Higashi (AR)	Infantile, ascending HSP (IAHSP) Complicated HSP Cerebellar ataxia and peripheral neuropathy MRI: Cerebellar and Thoracic spinal cord atrophy Laboratory Granulocytes: Peroxidase stained giant granules	AR	One Japanese family	Shimazaki et al. (2014)
<i>TPP1</i>	Spinocerebellar ataxia Autosomal Recessive 7 (SCAR7)	Complicated HSP. Bulbar palsy, reduced intellectual function, seizures, neck dystonia	AR	One family	Kara et al. (2016)
	Childhood-onset Ceroid lipofuscinosis, neuronal, 2 (AR)	Brain MRI: Cerebral atrophy, thin corpus callosum. Temporary response to L-DOPA		Sporadic case	
<i>IFIH1</i>	Aicardi-Goutières syndrome 7 (AR) Singleton-Merten syndrome 1	Pure HSP	AR		Crow et al. (2014)
<i>FAM134B</i>	Neuropathy, hereditary sensory and autonomic, type IIB (AR)	Complicated HSP	AR	One Turkish family and two Saudi families	Ilgaz Aydinlar et al. (2014); Wakil et al. (2018)
<i>CCT5</i>	Neuropathy, hereditary sensory, with spastic paraplegia (AR)	Complicated HSP	AR	One Moroccan family	Bouhouche et al. (2006)
<i>POLR3A</i>	Tremor-ataxia with central hypomyelination (TACH) leukodystrophy Hypomyelinating leukodystrophy (HLD7) with Ataxia and Hypodontia Leukodystrophy, hypomyelination, 7, with or without oligodontia and/or hypogonadotropic hypogonadism/Wiedemann-Rautenstrauch syndrome (AR)	Complicated HSP Ataxia Dental abnormalities Head and neck titubation/dystonia	AR	Norwegian cohort with sporadic HSP	Rydning et al. (2019)

(Continued on following page)

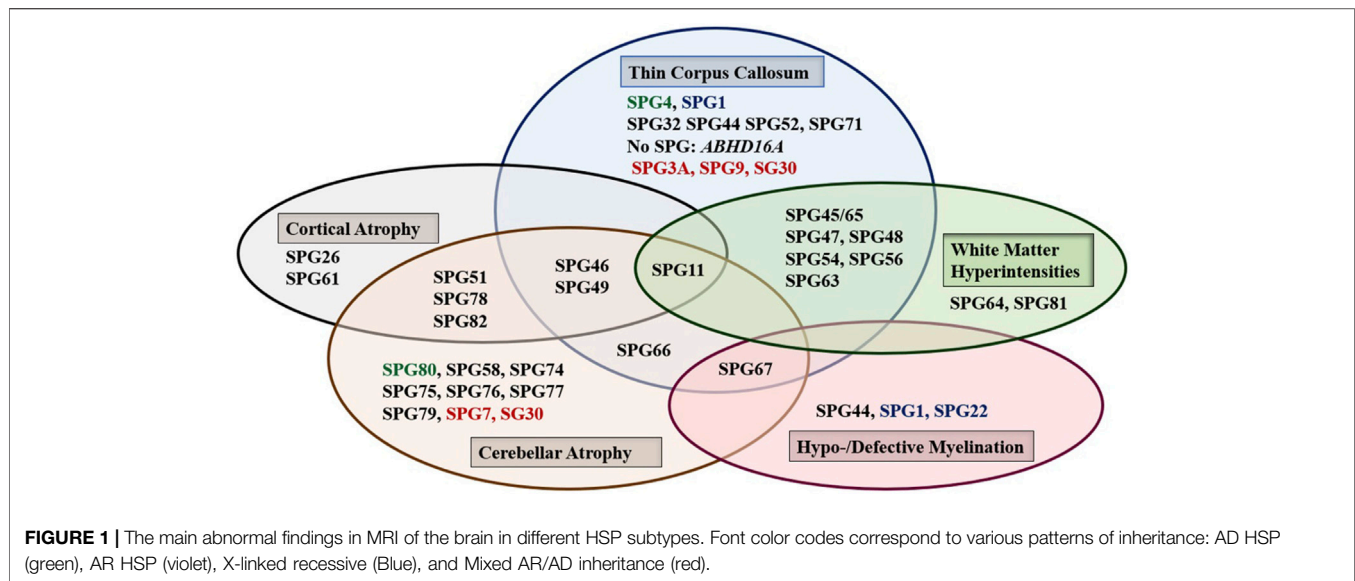
TABLE 1 | (Continued) Table summarizing HSP forms associated with non-SPG genes and the main allelic phenotypes associated with causative variants in these genes.

Gene	Disease	HSP Phenotype	HSP mode of inheritance	Families with HSP	Reference
<i>GRID2</i>	Spinocerebellar ataxia, autosomal recessive 18	Complicated HSP Ataxia: Dysarthria, dysmetria Frontotemporal dementia Hand muscle wasting Brain MRI: Cerebellar and Mesencephalic atrophy	AR Deletion	Sporadic case	Maier et al. (2014)
<i>DNM2</i>	Charcot-Marie-Tooth neuropathy Centronuclear myopathy	Complicated HSP Distal muscular wasting NCS: mild distal motor/sensory axonopathy	AD	One large Siberian kindred	Sambuughin et al. (2015)
<i>CCDC88C</i>	Autosomal recessive congenital hydrocephalus late-onset Spinocerebellar ataxia type 40 (AD)	Pure HSP	AD	One Sudanese family	Yahia et al. (2021)
<i>MTCO3</i>	Myopathy, Exercise intolerance, Encephalopathy, Lactic acidemia (one of the specific sporadic mitochondrial myopathy syndromes)	Complicated HSP	Mitochondrial	One family	Tiranti et al. (2000)
	Recurrent Encephalopathy Leber Hereditary Optic Atrophy (neuropathy) (LHON)	Developmental delay and Ophthalmoplegia		Sporadic Case	
<i>MTT1</i>	Cardiomyopathy Familial progressive necrotizing encephalopathy Leigh syndrome Myoclonus epilepsy, Progressive (MERRF) Mitochondrial Hypomagnesemia, hypokalemia, hypertension, and hypercholesterolemia	Complicated HSP Dysarthria, severe hearing loss, mental regression, ptosis, ophthalmoparesis, and diabetes mellitus, cardiomyopathy	Mitochondrial	One family	Corona et al. (2002)
<i>MTND4</i>	Leber optic atrophy (neuropathy) +/- dystonia MELAS Syndrome Late-onset encephalopathy	Complicated HSP Visual loss, Sexual and Urinary disturbances, and visual evoked potentials: Abnormal	Mitochondrial	One family	Clarençon et al. (2006)
<i>MTATP6</i>	Myopathy, Lactic Acidosis and Sideroblastic anemia 3 (MLASA3) Leigh syndrome Later onset: Bilateral striatal necrosis	Complicated HSP Developmental delay, retinal degeneration NCV: Axonal neuropathy	Mitochondrial	One family	Verny et al. (2011)

TABLE 2 | Grouping of various HSP forms based on the clinical presentation.

Clinical category	HSP Forms
Pure/Complex HSP	AD: SPG4, SPG6, SPG8, SPG10, SPG12, SPG13, SPG19, SPG31, SPG33, SPG41, SPG42, SPG73, SPG80 AR: SPG5A, SPG11, SPG15, SPG24, SPG27, SPG28, SPG45/65 (<i>NT5C2</i>), SPG56, SPG57, SPG58, SPG62, SPG76, SPG77, SPG80 AR/AD: SPG3A, SPG7, SPG9, SPG18, SPG30, SPG72 X-Linked recessive: SPG16, SPG34
Only Pure HSP reported	AD: SPG12, SPG13, SPG19, SPG41, SPG42 AR: SPG24, SPG62, SPG83 X-Linked recessive: SPG34
SP complicated with cognitive impairment/intellectual disability	AD: SPG4, SPG6, SPG10, SPG80 AR: SPG5A, SPG11, SPG14, SPG15, SPG20, SPG21, SPG23, SPG26, SPG27, SPG32, SPG35, SPG39, SPG44, SPG45/65 (<i>NT5C2</i>), SPG46, SPG47, SPG48, SPG49, SPG50, SPG51, SPG52, SPG53, SPG54, SPG55, SPG56, SPG59, SPG60, SPG61, SPG64, SPG69, SPG75, SPG77, SPG78, SPG81, SPG82, <i>ABHD16A</i> X-Linked recessive: SPG1, SPG2, SPG16, SPG22 AR/AD: SPG3A, SPG9, SPG18, SPG30
HSP complicated peripheral neuropathy [with/without amyotrophy]	AD: SPG4, SPG6, SPG10, SPG31, SPG36, SPG80 AR: SPG11, SPG14, SPG15, SPG21, SPG23, SPG25, SPG26, SPG27, SPG28, SPG39, SPG43, SPG46, SPG48, SPG55, SPG56, SPG57, SPG60, SPG61, SPG66, SPG68, SPG74, SPG75, SPG76, SPG78, SPG79 AR/AD: SPG3A, SPG7, SPG9, SPG30
HSP complicated with amyotrophy [no peripheral neuropathy]	AD: SPG8, SPG17, SPG38, SPG73 AR: SPG5A, SPG18, SPG20, SPG35, SPG47, SPG51, SPG52, SPG63, SPG64, SPG65, SPG67, SPG70, SPG77 AR/AD: SPG58, SPG72
HSP complicated with cerebellar signs (clinical) [with/without evidence of cerebellar atrophy on brain MRI]	AD: SPG4, SPG10, SPG31, SPG80 AR: SPG5A, SPG11, SPG15, SPG20, SPG21, SPG26, SPG28, SPG35, SPG39, SPG44, SPG46, SPG48, SPG49, SPG59, SPG60, SPG62, SPG64, SPG67, SPG68, SPG75, SPG76, SPG77, SPG78, SPG79, SPG82 AR/AD: SPG7, SPG9, SPG30, SPG58 X-Linked recessive: SPG1, SPG2, SPG22
HSP complicated with extrapyramidal signs	AD: SPG10 AR: SPG21, SPG35, SPG47, SPG48, SPG56, SPG78 AR/AD: SPG58 X-Linked recessive: SPG1, SPG22
HSP complicated with optic atrophy	AR: SPG35, SPG45/65 (<i>NT5C2</i>), SPG54, SPG55, SPG57, SPG68, SPG74, SPG75, SPG79, SPG82 AR/AD: SPG7, SPG9
HSP complicated with cataract	AR: SPG26, SPG46, SPG64, SPG69 AR/AD: SPG9
HSP complicated with strabismus	AR: SPG50, SPG54, SPG55, SPG77
HSP complicated with retinal/macular degeneration	AD: SPG10 AR: SPG11, SPG15, SPG81
HSP complicated with deafness	AD: SPG10 AR: SPG29, SPG46, SPG69
HSP complicated with anarthria	AD: SPG4 AR: SPG35
HSP with bulbar features	AD: SPG10
HSP complicated with hypotonia	AR: SPG49, SPG51, SPG52 X-Linked recessive: SPG22
HSP complicated with seizures/epilepsy	AD: SPG6 AR: SPG35, SPG47, SPG50, SPG51, SPG77, SPG81, SPG82 AR/AD: SPG18 X-Linked recessive: SPG2
HSP complicated with stereotypic laughter	AR: SPG47, SPG50, SPG51, SPG52
HSP complicated with microcephaly	AR: SPG47, SPG49, SPG50, SPG51, SPG52, SPG64
HSP complicated with short stature	AR: SPG20, SPG27, SPG47, SPG52, SPG54, SPG56, SPG63 AR/AD: SPG58
HSP complicated with developmental delay	AR: SPG20, SPG47, SPG51, SPG52, SPG53, SPG54, SPG56, SPG61, SPG69, SPG77, SPG81, SPG82, <i>ABHD16A</i> AR/AD: SPG58
HSP complicated with skeletal deformities	AR: SPG23, SPG27, SPG47, SPG49, SPG51, SPG52, SPG53, SPG59, SPG65, SPG66, SPG81 AR/AD: SPG9 X-Linked recessive: SPG1
HSP complicated with hypogonadism and infertility	AR: SPG46 [infertility in males] AR: SPG64 [delayed puberty]

HSP, hereditary spastic paraplegia. The modes of inheritance are indicated by: AD, AR, X-Linked recessive with AR/AD representing mixed inheritance.



2012a; 2012b) with limited phenotype-genotype correlations (Coarelli et al., 2019; Pennings et al., 2020).

Genetic Diagnosis: Approaches, Yield and Gap in Genetic Etiology

Despite the advances in genetic studies in the last two decades that resulted in a remarkable improvement of the genetic diagnostic yield, it seems that we are just seeing the tip of the iceberg. The overall diagnostic gap in HSP is currently estimated to be 40–70% on average with a smaller gap of 25–40% reported in some studies with specific ethnicities (Novarino et al., 2014; Morais et al., 2017; Bis-Brewer and Züchner, 2018; Koh et al., 2018) despite the use of combined approaches. The diagnostic yield seems to vary based on many factors that are not all well characterized. However, the approach used for genetic testing, the bioinformatic pipelines used in data analysis, the availability of DNA of other members of the family to confirm genotype-phenotype co-segregation, all seem to play roles. The types of the families included in the cohort [AD, AR or simplex/sporadic] also affect the genetic diagnostic capacity with lower yields obtained in cohorts of simplex cases. However, contradicting values have been observed (Schüle et al., 2016; Bis-Brewer and Züchner, 2018). The underlying genetic cause itself, and particularly when it is not easily analysed (novel unknown genes, variants in non-coding regions, oligogenicity), likely plays an additional role in lowering the genetic yield, together with the approach used, and its suitability to detect these types of genetic causes (Bis-Brewer and Züchner, 2018; Koh et al., 2018). Not only do these factors work individually, but also sometimes their combined interaction may result in failure to reach the genetic diagnosis in a family, and thus contributing to the genetic diagnostic gap in a cohort. The gap in the diagnostic yield of genetic studies using whole exome sequencing (WES), with the majority of non-coding region uncovered, is being gradually highlighted as exemplified by the deep intronic *POLR3B* variant which was identified as a cause of spastic ataxia, then later being shown to account for around 3.1% of

genetically unclassified AR and sporadic cases (Bis-Brewer and Züchner, 2018). This might also suggest that the heterogeneity of the phenotype can be due to, or, modified by, an unexplored non-coding region. This may question many of the results that we have about the underlying pathophysiologic mechanisms to date. NGS-based gene panels tailored to spastic disorders, movement disorders or Mendelian disorders (clinical exomes), are currently preferred for candidate gene screening approach (Méreaux et al., 2021b). However, occasionally Multiplex Ligation-dependent Probe Amplification (MLPA) and Sanger sequencing for selected genes, are performed to exclude the commonest genes causing HSP before using the NGS-based techniques. The broader the spectrum of genes covered, the higher the opportunity to identify novel HSP genes presenting with novel allelic phenotypes (Table 1). This is especially important with the remarkable overlap demonstrated in neurogenetic disorders lately (Synofzik et al., 2014; Chrestian et al., 2016; Kara et al., 2016; van de Warrenburg et al., 2016; Morais et al., 2017; Synofzik and Schüle, 2017; Elsayed et al., 2019b; Elert-Dobkowska et al., 2019). The genetic diagnostic yield using targeted gene panels and clinical exomes ranges from ≈15 to 30% when known common HSP genes have been excluded at a provisional screening. However, the yield steps up and may reach 50% or more when the panels/clinical exomes are used as the primary screening tool with common HSP genes included in them (Burguez et al., 2017; Morais et al., 2017; Elert-Dobkowska et al., 2019; Méreaux et al., 2021b). WES, and more recently genome sequencing, on the other hand, provides a better diagnostic yield of 30–60% (Novarino et al., 2014; Kara et al., 2016; Schüle et al., 2016; Bis-Brewer and Züchner, 2018). The diagnostic gap further decreases when using combined approaches tailored to the nature of the cohort (Kara et al., 2016; Koh et al., 2018). The search for rearrangements, particularly in *SPAST* and *SPG11*, using analysis of coverage in NGS-based techniques must be performed as such mutational mechanisms are relatively frequent (Méreaux et al., 2021b). Systematic reanalysis of

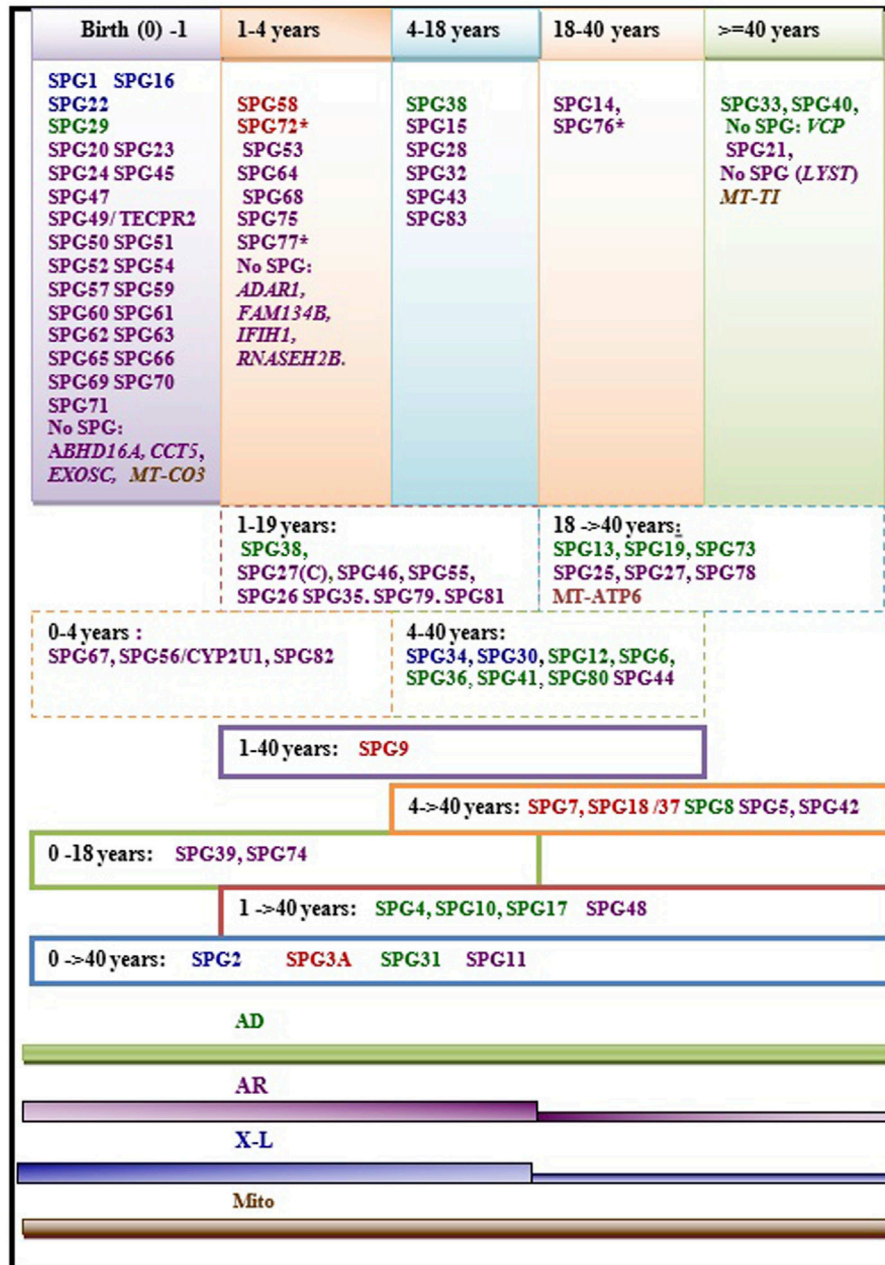


FIGURE 2 | Regrouping of the age at onset of various HSP subtypes. The asterisk (*) indicates few exceptions in the age at onset range: SPG76*[one case is congenital] SPG72* and SPG77* has an age at onset range between (1–5 years)], SPG27 stands for the pure form and SPG27C for the complex form of SPG27. Font color codes represent the modes of inheritance: AD HSP (green), AR HSP (violet), X-linked recessive (Blue), Mitochondrial (brown), and Mixed AR/AD inheritance (red).

negative panels or exomes should also be performed regularly as alignment and base-calling are constantly improving.

Very few reports have found phenotype-genotype correlations which elicit the impact of patient’s gender, the affected gene, and the nature of the mutation, in addition to other factors including ethnicity and genetic background. The impact of the patients’ gender in the phenotypic presentation has been pinpointed in a meta-analysis of 147 studies on HSP including nine of the most

frequent AD HSP and AR HSP subtypes. This identified male predominance in certain subtypes [SPG7 (AR HSP) and SPG31 (AD HSP)] (Erfanian Omidvar et al., 2019). This was observed previously in SPG4 as well (Orlacchio et al., 2005b). Interestingly, a recent study identified significant lower penetrance in SPG4 female patients (Parodi et al., 2018b). Moreover, age at onset was shown to be modified by factors including ethnicity, the disease-causing genes, and the nature of the causative mutation itself

TABLE 3 | Table summarizing the 88 HSP clinical-genetic entities with special focus on the functions of their proteins and our suggested primary and secondary functional categories.

SPG code (Inheritance)	OMIM #/%	Gene locus	Age at onset	P/C	Protein	Function	Frequency	Reference
AD/AR HSP SPG3A (AD/AR)	#606439	<i>ATL1</i> 14q22.1	<1–51 (mainly <10) years	P/C	Atlasin GTPase1	Dynamin GTPase: ER shaping, ER and lipid droplet fusion, Inhibit BMP signaling	10% [39% of young-onset patients] AR: One family	Zhao et al. (2001)
SPG7 (AR/AD)	#607259	<i>SPG7</i> 16q24	4–42 years	P/C	Paraplegin	Component of the mitochondrial AAA protease	1.5–6% 7% of AR families Rare AD cases	Casari et al. (1998); Coarelli et al. (2019)
SPG9A (AD)	#601162	<i>ALDH18A1</i> 10q23.3-q24.1	13–59 years	C	Pyrroline-5-carboxylate synthase (P5CS) protein	Enzyme: Pyrroline-5-carboxylate synthase with glutamate kinase (GK) and γ -glutamyl phosphate reductase activities (amino-acid metabolism)	Seven families	Seri et al. (1999); Coutelier et al. (2015)
SPG9B (AR)	#601162	<i>ALDH18A1</i> 10q23.3-q24.1	1–7 years	P/C	Pyrroline-5-carboxylate synthase (P5CS) protein	Enzyme: Pyrroline-5-carboxylate synthase with glutamate kinase (GK) and γ -glutamyl phosphate reductase activities (amino-acid metabolism)	Two families	Seri et al. (1999); Coutelier et al. (2015)
SPG18 (AR)	#616586	<i>ERLIN2</i>	<2 years	AR: C	Erlin-2	ER-associated degradation pathway (ERAD)	Seven families [AR: Five families, AD: Two families]	Alazami et al. (2011); Yildirim et al. (2011); Rydning et al. (2018)
SPG18 (AD)				AD: P				
(SPG37) SPG37 (AD)	% 611945	8p11.23 8p21.1-q13.3	8–60 years	P	Protein not identified	Protein not identified	One family	Hanein et al. (2007)
(AD SPG18) SPG30 (AR/AD)	#610357	<i>KIF1A</i> 2q37.3	10–39 years	AR: P/C AD: C	Kinesin-like protein KIF1A	Motor protein, axonal anterograde transport	17 families	Klebe (2006); Erlich et al. (2011); Esteves et al. (2014)
SPG58 (AR)	#611302 *603060	<i>KIF1C</i> 17p13.2	2–4 years	P/C	Kinesin family member 1C	Motor protein; Axonal transport Retrograde Golgi to ER transport	Six families	Dor et al. (2014); Novarino et al. (2014)
SPG72 (AR/AD)	#615625	<i>REEP2</i> 5q31.2	3–4 years	P/C	Receptor expression-enhancing protein 2	ER membranous protein: ER shaping	AD: Two families AR: Two families	Esteves et al. (2014)
AD HSP [gene identified] SPG4 (AD)	#182601	<i>SPAST</i> 2p22.3	1–80 years	P/C	Spastin	AAA protein: Microtubule dynamics (Microtubule severing), inhibits BMP signaling ER morphogenesis, Endosomal trafficking Cytokinesis LD biogenesis	28–50% [40%] of AD 9–18% of sporadic cases	Hazan et al. (1999)
SPG6 (AD)	#600363	<i>NIPA1</i> 15q11.2	8–37 years	P/C	NIPA1/Non-imprinted in Prader Willi/Angelman syndrome 1	Mg ²⁺ transporter: Inhibitor of BMP pathway, Endosomal trafficking	14 families	Chai et al. (2003); Rainier et al. (2003)
SPG8 (AD)	#603563	<i>KIAA0196</i> 8q24.13	10–60 years	P/C	Strumpellin	Cytoskeleton/Actin remodeling, Endosomal traffic	19 families	Valdmanis et al. (2007)
SPG10 (AD)	#604187	<i>KIF5A</i> 12q13.3	2–51 years	P/C	Kinesin heavy chain isoform 5 A	Motor protein: microtubule-dependent ATPASE, anterograde axonal transport	3%	Reid et al. (2002)
SPG12 (AD)	#604805	<i>RTN2</i> 19q13.32	7–24 years	P	Reticulon 2	ER shaping protein	Four families	Montenegro et al. (2012)
SPG13 (AD)	#605280	<i>HSPD1</i> 2q33.1	17–68 years	P	Heat shock protein 60 Kda protein 1/ chaperonin	Mitochondrial chaperonin/ Mitochondrial regulation	Two families	Hansen et al. (2002)

(Continued on following page)

TABLE 3 | (Continued) Table summarizing the 88 HSP clinical-genetic entities with special focus on the functions of their proteins and our suggested primary and secondary functional categories.

SPG code (Inheritance)	OMIM #/%	Gene locus	Age at onset	P/C	Protein	Function	Frequency	Reference
SPG17 (AD)	#270685	<i>BSCL2</i> 11q12.3	2–60 years	C	Seipin	ER scaffolding protein for lipid metabolism, lipid droplet biogenesis at ER	23 families	Windpassinger et al. (2004)
SPG31 (AD)	#610250	<i>REEP1</i> 2p11.2	Variable	P/C	Receptor expression-enhancing protein 1	ER-shaping protein, mitochondrial-ER interface functions, ER-microtubule interaction, LD regulation	4.5%	Züchner et al. (2006)
SPG33 (AD)	#610244	<i>ZFYVE27/</i> <i>Protrudin</i> 10q24.2	42–50 years	P	Protrudin	ER morphology protein, regulates and promotes protrusion and neurite outgrowth LE-ER contact, interactor of spastin	One family [it is debated because of the variant frequency]	Mannan et al. (2006)
DEBATED								
SPG42 (AD)	#612539	<i>SLC33A1</i> 3q25.31	4–42 years	P	Acetyl-coenzyme A transporter 1	Acetyl-CoA transporter (role in glycolipid metabolism) BMP signaling autophagy	One family	Lin et al. (2008)
SPG73 (AD)	#616282	<i>CPT1C</i> 19q13.33	19–48 years	P/C	Carnitine palmitoyl-transferase	Neuronal isoform of Carnitine Palmitoyltransferase-1c, Lipid metabolism Lipid-mediated signal transduction; Number and size of lipid droplets	One family	Rinaldi et al. (2015)
SPG80 (AD)	#618418	<i>UBAP1</i> 9p13.3	juvenile	P/C	Ubiquitin-associated protein 1	Vesicular trafficking, regulator Proteasomal degradation of ubiquitinated cell-surface proteins Sorting endocytic ubiquitinated cargo proteins into MVB	14 families	Farazi Fard et al. (2019)
AD HSP [gene not identified]								
SPG19 (AD)	607152%	9q33-q34	36–55 years	P	Protein not identified	Protein not identified	One family	Valente et al. (2002)
SPG29 (AD)	609727%	1p31.1-21.1	Infancy	C	Protein not identified	Protein not identified	One family	Orlacchio et al. (2005a)
SPG36 (AD)	613096%	12q23-24	14–33 years	C	Protein not identified	Protein not identified	One family	Verkerk et al. (2009)
SPG38 (AD)	612335%	4p16-p15	16–19 years	C	Protein not identified	Protein not identified	One family	Orlacchio et al. (2008)
SPG40 (AD)	No OMIM #/%	(locus within SPG3A)	adulthood	P/C	Protein not identified	Protein not identified		Subramony et al. (2009)
SPG41 (AD)	613364%	11p14.1-11p.2	Mean 17 ± 3 years	p	Protein not identified	Protein not identified	One family	Zhao et al. (2008)
AR HSP [gene identified]								
SPG5/ SPG5A (AR)	#270800	<i>CYP7B1</i> 8q12.3	4–47 years	P/C	25-hydroxycholesterol 7-alpha-hydroxylase	Cholesterol metabolism Conversion of 27-OH-cholesterol to 3β, 7α-dihydro-5-cholestenoic acid	7%	Tsaousidou et al. (2008)
SPG11 (AR)	#604360	<i>KIAA1840</i> 15q21.1	<1–33 years	P/C	Spatacsin	Lysosome biogenesis, autophagy endosomal traffic	[339 patients] 15–21% [59% of AR]	Hanein et al. (2007); Du (2021)
SPG15 (AR)	#270700	<i>ZFYVE26</i> 14q24.1	4–19 years	P/C	Zinc finger FYVE domain-containing protein 26 [Spastizin]	Lysosome recycling protein (biogenesis) cytokinesis, autophagy, endosomal traffic	4% [31 families]	Hughes et al. (2001); Hanein et al. (2008)
SPG20 (AR)	#275900	<i>KIAA0610</i> <i>Spartin</i> 13q13.3	Infancy	C	Spartin	Endosomal traffic, Cytokinesis, inhibit BMP signaling, Lipid droplet maintenance, and turnover, Mitochondrial Ca ²⁺ homeostasis	Eight families	Patel et al. (2002)

(Continued on following page)

TABLE 3 | (Continued) Table summarizing the 88 HSP clinical-genetic entities with special focus on the functions of their proteins and our suggested primary and secondary functional categories.

SPG code (Inheritance)	OMIM #/%	Gene locus	Age at onset	P/C	Protein	Function	Frequency	Reference
SPG21 (AR)	#248900	<i>ACP33</i> 15q22.31	Adulthood	C	Masparidin	Association with microtubules and tubulin Late Endosomal/trans-Golgi traffic	Two families	Simpson et al. (2003)
SPG23 (AR)	#270750	<i>DSTYK</i> ; 1q32.1	Infancy	C	Dusty protein kinase, Dual serine/threonine, and tyrosine protein kinase	Induces both caspase-dependent and caspase-independent cell death Cell death regulation	Three families	Blumen et al. (2003); Lee et al. (2017)
SPG26 (AR)	#609195	<i>B4GALNT1</i> ; 12q13.3	2–19 years	C	Beta-1,4 N-acetylgalactosaminyl transferase 1	Enzyme: GM2 synthase, Ganglioside metabolism	Seven families	Wilkinson et al. (2005); Boukhris et al. (2013)
SPG28 (AR)	#609340	<i>DDHD1</i> ; 14q22.1	7–15 years	P/C	Phospholipase A1, DDHD1	Lipid metabolism Keeps mitochondrial membrane phospholipid and function Forms lipid messengers in ER	Four families	Bouslam et al. (2005); Tesson et al. (2012)
SPG35 (AR)	#612319	<i>FA2H</i> ; 16q23.1	2–17 years (One family late onset)	C	Fatty acid 2-hydroxylase	Fatty acid metabolism Myelin stability Hydroxylation of myelin galactocerebroside	28 families	Dick et al. (2008), Dick et al. (2010); Edvardson et al. (2008)
SPG39 (AR)	#612020	<i>PNPLA6</i> ; 19p13.2	Infancy, adolescence	C	Neuropathy target esterase	Acetyl Co-A transported, BMP signaling Lipid metabolism, Involved in membrane curvature, Axonal maintenance, phospholipid homeostasis	10 families	Rainier et al. (2008); Synofzik et al. (2014)
SPG43 (AR)	#615043	<i>C19orf12</i> ; 19q12	7–12 years	C	Protein C19orf12	Mitochondrial protein with unknown functions	Three families	Meilleur et al. (2010); Landouré et al. (2013)
SPG44 (AR)	#613206	<i>GJC2</i> ; 1q42.13	1st or 2nd decade	C	Gap junction gamma-2 protein	Oligodendrocyte connexin (intercellular gap junction channel CNS myelination)	One family	Orthmann-Murphy et al. (2008)
SPG45 (SPG65) (AR)	#613162	<i>NT5C2</i> ; 10q24.32-q24.33	Infancy	P/C	Cytosolic purine 5'-nucleotidase	Hydrolyzes IMP in both purine/pyrimidine nucleotide metabolism	Two families	Dursun et al. (2009); Novarino et al. (2014)
SPG46 (AR)	#614409	<i>GBA2</i> ; 9p13.3	1–16 years	C	Microsomal Non-lysosomal glucosylceramidase/ Glucocerebrosidase 2	Ganglioside metabolism Conversion of glucosylceramide to free glucose and ceramide. Involved in sphingomyelin generation Brain Myelination and CNS development	12 families	Boukhris et al. (2010); Martin et al. (2013)
SPG47 (AR)	#614066	<i>AP4B1</i> ; 1p13.2	Birth	C	AP-4 complex subunit beta-1	Member of the trafficking endocytic adaptor protein complex 4 Non-clathrin coating vesicular trafficking (brain development and function) Somatodendritic sorting and autophagy	13 families	Abou Jamra et al. (2011); Bauer et al. (2012)
SPG48 (AR)	#613647	<i>AP5Z1</i> ; 7p22.1	2–50 years (mainly adult)	C	AP-5 complex subunit zeta-1	Member of the trafficking endocytic Adaptor protein complex 5 Helicase function, involved in DNA repair response	18 families	Slabicki et al. (2010); Breza et al. (2021)
SPG49 (AR)	#615031	<i>TECPR2</i> ; 14q32.31	Infancy	C	Tectorin beta-propeller repeat-containing protein 2	Positive regulator of autophagy	Three families	Oz-Levi et al. (2012)

(Continued on following page)

TABLE 3 | (Continued) Table summarizing the 88 HSP clinical-genetic entities with special focus on the functions of their proteins and our suggested primary and secondary functional categories.

SPG code (Inheritance)	OMIM #/%	Gene locus	Age at onset	P/C	Protein	Function	Frequency	Reference
SPG50 (AR)	#612936	<i>AP4M1</i> ; 7q22.1	Infancy	C	AP-4 complex subunit mu-1	Member of the trafficking endocytic adaptor protein complex 4 Non-clathrin coating vesicular trafficking (brain development and function) Somatodendritic sorting and autophagy	Five families	Verkerk et al. (2009)
SPG51 (AR)	#613744	<i>AP4E1</i> ; 15q21.2	Infancy	C	AP-4 complex subunit epsilon-1	Member of the trafficking endocytic adaptor protein complex 4 Non-clathrin coating vesicular trafficking (brain development and function) Somatodendritic sorting and autophagy	Four families	Abou Jamra et al. (2011); Moreno-De-Luca et al. (2011)
SPG52 (AR)	#614067	<i>AP4S1</i> ; 14q12	Infancy	C	AP-4 complex subunit sigma-1	Member of the trafficking endocytic adaptor protein complex 4 Non-clathrin coating vesicular trafficking (brain development and function) Somatodendritic sorting and autophagy	Five families	Abou Jamra et al. (2011)
SPG53 (AR)	#614898	<i>VPS37A</i> ; 8p22	1–2 years	C	Vacuolar protein sorting-associated protein 37A	Subunit of the ESCRT-I complex involved in intracellular (endosomal trafficking) Maturation of MVB and the sorting of ubiquitinated membrane proteins into internal luminal vesicles	Two families	Zivony-Elboun et al. (2012)
SPG54 (AR)	#615033	<i>DDHD2</i> ; 8p11.23	<2 years	C	Phospholipase DDHD2	Retromer component Enzyme: Phospholipase (lipid metabolism) May play role in synaptic organization and plasticity Distribution of ER-Golgi proteins (vesicle trafficking)	Nine families	Al-Yahyaee et al. (2006); Schuurs-Hoeijmakers et al. (2012)
SPG55 (AR)	#615035	<i>C12orf65</i> ; 12q24.31	2–7 years	C	Probable peptide chain release factor C12orf65, mitochondrial	Member of the mediated ribosome rescue system in mitochondria Mitochondrial protein synthesis, uncertain Function Defective protein decreases oxidative phosphorylation complexes I, IV, and V	Three families	Shimazaki et al. (2012); Tesson et al. (2012)
SPG56 (AR)	#615030	<i>CYP2U1</i> ; 4q25	<1–8 years	P/C	Cytochrome P450 2U1	Hydroxylation of long chain fatty acids [eg. arachidonic acid, docosahexaenoic acid (DHA)] and vitamin B2	1.5% [nine families]	Tesson et al. (2012)
SPG57 (AR)	#615658	<i>TFG</i> ; 3q12.2	Infancy	P/C	Protein TFG	ER morphogenesis Vesicle biogenesis/transport between ER and Golgi	Six families	Beetz et al. (2013)
SPG59 (AR)	*603158	<i>USP8</i> ; 15q21.2	Infancy	C	Ubiquitin carboxyl-terminal hydrolase 8	Deubiquitination enzyme Trafficking and sorting of lysosomal enzymes Endosomal morphology and organization	One family	Novarino et al. (2014)

(Continued on following page)

TABLE 3 | (Continued) Table summarizing the 88 HSP clinical-genetic entities with special focus on the functions of their proteins and our suggested primary and secondary functional categories.

SPG code (Inheritance)	OMIM #/%	Gene locus	Age at onset	P/C	Protein	Function	Frequency	Reference
SPG60 (AR)	*612167	<i>WDR48</i> ; 3p22.2	Infancy	C	WD repeat-containing protein 48	Deubiquitination regulation DNA damage repair Lysosomal trafficking	One family	Novarino et al. (2014)
SPG61 (AR)	#615685	<i>ARL6IP1</i> ; 16p12.3	Infancy	C	ADP-Ribosylation-Like Factor 6- Interacting Protein 1	ER morphology protein Protein transport Anti-apoptotic	Three families	Novarino et al. (2014)
SPG62 (AR)	#615681	<i>ERLIN1</i> 10q24.31	childhood	P	Erlin-1	ER-associated degradation Cholesterol homeostasis; Lipid raft- associated	Three families	Novarino et al. (2014)
SPG63 (AR)	#615686	<i>AMPD2</i> ; 1p13.3	Infancy	C	AMP deaminase 2	Enzyme: Deaminates AMP to IMP in purine nucleotide metabolism	Two families	Novarino et al. (2014)
SPG64 (AR)	#615683	<i>ENTPD1</i> 10q24.1	1–4 years	C	Ectonucleoside triphosphate diphosphohydrolase 1	ATPase hydrolyzes extracellular ATP and ADP to AMP Regulate purinergic transmission and modulate P2 receptor	Two families	Novarino et al. (2014)
SPG45 (SPG65) (AR)	#613162	<i>NT5C2</i> 10q24.32- q24.33	Infancy	P/C	Cytosolic purine 5'-nucleotidase	Hydrolyzes IMP in both purine/ pyrimidine nucleotide metabolism	Two families	Dursun et al. (2009); Novarino et al. (2014)
SPG66 (AR)	#610009	<i>ARSI</i> 5q32	Infancy	C	Arylsulfatase I	Hydrolyses sulfate esters Hormone biosynthesis, Modulation of cell signaling; Degradation of macromolecules	One family	Novarino et al. (2014)
SPG67 (AR)	*611655	<i>PGAP1</i> 2q33.1	<1–4 years	C	GPI inositol-deacylase	Mature GPI biosynthesis ER-to-Golgi transport of GPI-anchor proteins (DAF)	One family	Novarino et al. (2014)
SPG68 (AR) Allelic, or same, disorder: SPOAN	*604806	<i>FLRT1</i> 11q13.1	2–3 years	C	Fibronectin-like domain-containing leucine-rich transmembrane protein 1	Cell adhesion; Receptor signaling Fibroblast growth factor signaling	One family	Novarino et al. (2014)
SPOAN Allelic, or same, disorder: SPG68	#609541	<i>KLC2</i> 11q13.2	Infancy	C	Kinesin light chain 2	Motor protein/axonal transport	47 families	Macedo-Souza et al. (2005), Macedo-Souza et al. (2009); Melo et al. (2015)
SPG69 (AR)	#609275	<i>RAB3GAP2</i> 1q41	<1 year	C	Rab3 GTPase-activating protein non- catalytic subunit	ER morphogenesis Exocytosis of neurotransmitters and hormones; Neurodevelopment	One family	Novarino et al. (2014)
SPG70 (AR)	*156560	<i>MARS</i> ; 12q13.3	<1 year	C	Methionine--tRNA synthetase, cytoplasmic	Cytosolic methionyl-tRNA synthesis	1 family	Novarino et al. (2014)
SPG71 (AR)	*615635	<i>ZFR</i> 5p13.3	Infancy	C	Zinc finger RNA-binding protein	Unknown	One family	Novarino et al. (2014)
SPG74 (AR)	#616451	<i>IBA57</i> 1q42.13	3–12 years	C	Putative transferase CAF17, mitochondrial	Mitochondrial iron-sulfur cluster (ISC) assembly machinery Important for normal respiratory complexes I, II, and IV and the lipoate- containing mitochondrial enzymes	One family	Lossos et al. (2015)
SPG75 (AR)	#616680	<i>MAG</i> 19q13.12	Infancy	C	Myelin-associated glycoprotein	Cell adhesion molecule involved in myelin maintenance and glia-axon interaction Inhibits neurite outgrowth and axonal regeneration	Two families	Novarino et al. (2014)

(Continued on following page)

TABLE 3 | (Continued) Table summarizing the 88 HSP clinical-genetic entities with special focus on the functions of their proteins and our suggested primary and secondary functional categories.

SPG code (Inheritance)	OMIM #/%	Gene locus	Age at onset	P/C	Protein	Function	Frequency	Reference
SPG76 (AR)	# 616907	<i>CAPN1</i> 11q13.1	13–39 years	P/C	Calpain 1 protease	Intracellular protease Synaptic plasticity, restructuring; Axon maintenance and maturation	50 families	Gan-Or et al. (2016); Méreaux et al. (2021a)
SPG77 (AR)	#617046	<i>FARS2</i> 6p25.1	6 months–5 years	P/C	Mitochondrial phenylalanine-tRNA Synthetase 2	Class II aminoacyl-tRNA synthetases Mitochondrial protein translation	Four families	Yang et al. (2016)
SPG78 (AR)	#617225	<i>ATP13A2</i> 1p36.13	Adulthood	C	Cation-transporting ATPase 13A2	ATPases transport inorganic cations and other substrates across cell membranes Autophagy; Endolysosomal trafficking, Mitochondrial function	Five families	Kara et al. (2016)
SPG79 (AR)	#615491	<i>UCHL1</i> 4p13	Childhood	C	Ubiquitin carboxyl-terminal hydrolase isozyme L1	DNA damage response, Thiol protease of peptidase C12 family Has ligase and hydrolase activities that may play roles in proteasomal protein degradation, a process critical for neuronal health	Three families	Bilguvar et al. (2013)
SPG81	#618768	<i>SELENOI</i> 2p23	Infancy	C	Ethanolaminophosphotransferase 1	Phosphatidylethanolamine synthesis	Two Families	Ahmed et al. (2017)
SPG82	#618770	<i>PCYT2</i> 17q25	<2 years	C	Phosphoethanolamine cytidyltransferase	Phosphatidylethanolamine synthesis	Four families	Vaz et al. (2019)
SPG83	#619027	<i>HPDL</i> 1p34	0–15 years	P	4-Hydroxyphenylpyruvate Dioxygenase-like	Mitochondrial metalloenzyme	Four families	Husain et al. (2020)
AR HSP [gene not identified]								
SPG14 (AR)	#605229	3q27-q28	~30 years	C	Protein not identified	Protein not identified	One family	Vazza et al. (2000)
SPG24 (AR)	%607584	13q14	Infancy	P	Protein not identified	Protein not identified	One family	Hodgkinson et al. (2002)
SPG25 (AR)	#608220	6q23-24.1	30–46 years	C	Protein not identified	Protein not identified	One family	Zortea et al. (2002)
SPG27 (AR)	609041%	10q22.1-q24.1	P: 25–45 years C: 2–7 years	P/C	Protein not identified	Protein not identified	Two families	Meijer et al. (2004)
SPG32 (AR)	611252%	14q12-q21	6–7 years	C	Protein not identified	Protein not identified	One family	Stevanin et al. (2007a)
X-linked HSP [gene identified]								
SPG1 (recessive X-linked)	#303350	<i>L1CAM</i> Xq28	Congenital	C	Neural cell adhesion molecule L1	Cell adhesion and signaling protein involved in axonal guidance Myelination Neurite outgrowth Neuronal cell migration and survival	Few families with HSP	Rosenthal et al. (1992); Jouet et al. (1994)
SPG2 (recessive X-linked)	#312920	<i>PLP1</i> Xq22.2	Variable	P/C	Proteolipid protein 1	Major myelin component Oligodendrocyte progenitor cell migration	Few families with HSP	Saugier-veber et al. (1994)
SPG22 (X-linked with female having a mild thyroid phenotype only)	#300523	<i>SLC16A2</i> Xq13.2	Early infancy	C	Monocarboxylate transporter 8	Thyroid (T3) hormone transporter MCT8	Few families with HSP	Claes et al., (2000); Starling et al. (2002); Dumitrescu et al. (2004)
X-Linked HSP (gene not identified)								
SPG16 (recessive X-linked)	300266%	Xq11.2	Early infancy	P/C	Protein not identified	Protein not identified	Two families	Steinmüller et al. (1997)
SPG34 (recessive X-linked)	300750%	Xq24-q25	16–25 years	P	Protein not identified	Protein not identified	One family	Macedo-Souza et al. (2008)

P, pure; C, complex; AD, autosomal dominant; AR, autosomal recessive.

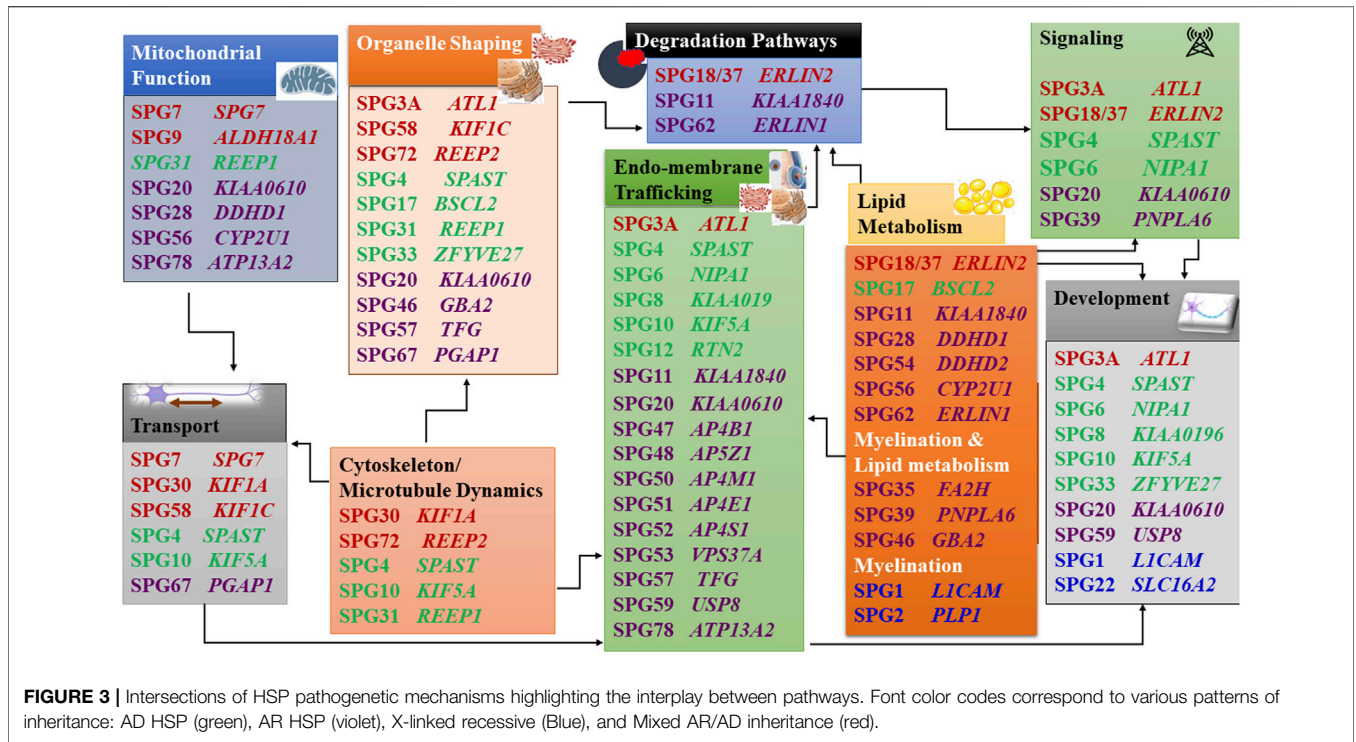


FIGURE 3 | Intersections of HSP pathogenetic mechanisms highlighting the interplay between pathways. Font color codes correspond to various patterns of inheritance: AD HSP (green), AR HSP (violet), X-linked recessive (Blue), and Mixed AR/AD inheritance (red).

(Parodi et al., 2018b; Newton et al., 2018; Erfanian Omidvar et al., 2019; Rodrigues et al., 2019). Missense mutations were found to be associated with earlier onset in SPG4 patients while the p.Ala510Val variant in SPG7 was found to be associated with a later disease onset and a more ataxic clinical presentation (Parodi et al., 2018b; Coarelli et al., 2019). Similarly, missense mutations in SPG11 are often associated with a later onset (Rubegni et al., 2015). Genetic modifiers have been reported to explain part of the variability in clinical presentation. Examples include the p.Ser44Leu and p.Pro45Gln variants in SPAST mutation carriers (Svenson et al., 2004) which were shown to have a real functional impact on spastin protein stability (Schickel et al., 2007; Pantakani et al., 2008). The p.Ser44Leu variant in SPAST was first reported as a cause of mild disease presentation then turned out to be a rare polymorphism acting as a phenotypic modifier (Lindsey et al., 2000; Svenson et al., 2004; Erichsen et al., 2007). Another example is the effect of deletions of SPAST that can sometimes extend to the nearby gene, DPY30, affecting the age at onset of SPG4 patients. This has particular importance as these deletions are relatively frequent in SPG4 (Beetz et al., 2006; Depienne et al., 2007; Newton et al., 2018). Finally, somatic mosaicism was shown to be a potential source of variant expressivity in SPAST mutation carriers (Angelini et al., 2021). However, the reduced penetrance of several variants in HSP genes still remains to be explained with the nature of the variants, their impact on protein expression/stability, the presence of compensatory protein or partners yet to be explored. This is apparently not yet the whole explanation of the great inter- and intra-familial variability of HSP patients especially with the digenic/oligogenic inheritance which is now emerging as a cause of a number of neurogenetic disorders including

amyotrophic lateral sclerosis (ALS) and epilepsy. However, these models may be altered by the type of mutations as well as by the frequency of the suggested modifiers in the populations, and this might explain the effect of ethnicity and might also indicate an indirect effect of the environment over genetics (Kousi and Katsanis, 2015; Bis-Brewer and Züchner, 2018; Amin et al., 2021). Numerous studies have also suggested an impact of epigenetics in Parkinson's, Alzheimer's, Huntington's diseases, cerebellar ataxias (CA), and ALS (Chestnut et al., 2011; Desplats et al., 2011; Chouliaras et al., 2013; Goodnight et al., 2019; Haertle et al., 2019; Jia et al., 2019; Lardenoije et al., 2019). A role for epigenetics in apoptosis was suggested in motor neuron pathology in ALS, with the upregulation of DNA methylase increasing DNA methylation which results in apoptosis (Chestnut et al., 2011). The role of epigenetics has also been studied in synaptic plasticity, in which decreased levels of DNA methylases, with associated synaptic degeneration, was observed in aging and degenerative disorders (Desplats et al., 2011; Chouliaras et al., 2013; Xylaki et al., 2019). However, the role of epigenetics in the HSP field, and its impact on the "expression" of the mutation, is still unclear. Identification of the factors affecting clinical presentation require international collaborative efforts in order to make this quest feasible in such rare genetic entities (Bis-Brewer and Züchner, 2018).

Ethnic differences manifest, at many levels, in the frequency of genes causing HSP, the predominant mode/s of inheritance, and the phenotypic presentation of genes. These differences reflect underlying variations which include the level of consanguinity, the ethnic genetic background, and the interaction with the environment, from which the effect of epigenetic modification of gene expression cannot be excluded. Many other factors

involved are not yet well characterized. Multiple examples of these ethnic differences have been reported. For example, in many Western cohorts, *KIF5A* mutations (SPG10) account for about 10% of the complicated forms of AD HSP. Interestingly the first Asian (Japanese) case with a *KIF5A* mutation was identified only recently and broadened the clinical and electrophysiological phenotypic spectrum of *KIF5A* (Kaji et al., 2016). Remarkable examples also include the AR HSP forms that were first identified in highly consanguineous populations such as the *KIF1A* variants which were first identified in African and Palestinian families, and subsequently reported in a multitude of families from all over the world (Vecchia et al., 2021). On many occasions, genes which were the solely identified in some ethnic groups turned out later to be quite frequent causes of AR HSP; for example SPG11 and SPG15 (Boukhris et al., 2009). The impact of these phenomena needs to be carefully considered in many regions of the world, where there are not enough facilities for advanced genetic research. Interesting phenotypes and underlying genetics can be identified in these populations if studies of HSP and other neurogenetic disorders are performed using scientific methods properly adapted to the population under investigation. This has been illustrated in the infrequent neurogenetic studies that included families or cohorts from the exceedingly consanguineous African, Middle Eastern and Asian countries. Examples include Libya, Iraq, Syria, Egypt, Saudi Arabia, Sudan, Oman, Iran among others (Sridharan et al., 1985; Rainier et al., 2003; Abou Jamra et al., 2011; Alazami et al., 2011; Novarino et al., 2014; Elsayed et al., 2016a, 2016b, 2018; Ahmed et al., 2017; Yahia et al., 2018, 2021; Farazi Fard et al., 2019). The studies that included cohorts from these unexplored areas are increasing in number and despite their relative sparsity, they have contributed remarkably to the existing knowledge about HSP and other neurogenetic disorders. A good illustration is the work by Novarino et al. which reported 18 novel genes in a large set of consanguineous families from Middle East and North-Africa (Novarino et al., 2014). They illustrated the strong potential of digging into these virgin fields. Moreover, in many countries in the less developed regions of the world that are entirely unexplored from a genetic point of view, epidemiological data about most of genetic diseases are not available. This gives a hint about the fact that many of the current statistical estimates are inherently untrue. These population-based differences, highly stressed in recent research, show clearly that the overall portrait of the phenotypic presentation, the mechanisms and molecular pathways involved in the causation and pathogenicity of HSP, and the resulting cellular adaptations to the disease, will never be completely well-characterized if this gap is not overcome.

Clinical Spectrum of HSP

Assessment and Diagnostic Approach of HSP Patients

The pivotal point that strongly suggests HSP is positive family history. However, HSP remains a diagnosis of exclusion in sporadic cases, where a number of other conditions such as HTLV1 infection, food intoxication, malformations, and cancer must be excluded through appropriate investigation. In particular, the assessment of the patient requires accurate history

and clinical examination using the Spastic Paraplegia Rating Scale to assess the severity of the motor symptoms (Schüle et al., 2006). However, a variety of disability scores are also used for assessment of the patient's disability stage. Further assessment including radiological, electrophysiological and laboratory testing, will give additional evidence on the nature of the disease and help to eliminate important differential diagnoses. The principal radiological assessments utilized are magnetic resonance imaging (MRI) of the brain and spinal cord. While MRI of the spine does not show significant abnormalities most of the time, brain MRI on the contrary (or sometimes computerized tomography (CT) scan of the brain) can give critical information that can assist in the exclusion of various differential diagnoses such as leukodystrophies and leukoencephalopathies, neurodegeneration with brain iron accumulation, ALS, or infectious and dysimmune causes. In addition, it will provide direction to the category of HSP (eg. HSP with thin corpus callosum (TCC)) and probable genes beyond it with the prominent example of *SPG11* being the most likely gene in TCC HSP. However, the question of the exclusion of leukodystrophies is now debated in light of the overlap of several HSP forms with this group of diseases.

Electrophysiological tests include electromyogram/nerve conduction studies (EMG/NCS), evoked potentials (somatosensory [SEP], visual, and auditory). These studies provide ample information about the underlying pathology and the clinical presentation of the patient resulting in both better diagnostic yield and delineation of the clinical spectrum of the disease phenotype.

Associated Signs and Clinical Phenotypes

There is vast heterogeneity of the phenotypes associated with HSP. In this review, we derived clinical associations that may aid in a better understanding of HSP as a model of inherited neurodegenerative disorder. The core clinical presentation of patients is well-known to be with pyramidal syndrome which consists of increased muscle tone (spasticity with scissoring and clonus in its most severe form), hyperreflexia and extensor plantar response (Babinski sign). Classically, HSP can be pure (uncomplicated) or complex (complicated) according to the absence or presence of additional neurological and extra-neurological manifestations but this distinction has most of the time no relation to the genetic etiology. Indeed, with the recent surge of genetic data, and the expansion of the associated clinical picture of several mutated genes, some forms were found to manifest with a wider clinical presentation ranging from pure to complex, with differences sometimes within the same family. Moreover, some HSP genes were linked to multiple allelic presentations that included even non-HSP phenotypes (Elsayed et al., 2019a; 2019b). Pure forms can also present with clinical features suggesting involvement of the dorsal column, with diminished or even abolished vibration sense. Sphincter involvement (principally urinary urgency) can occur in pure HSP too due to increased bladder muscle tone (Fink, 1993, 2014; Finsterer et al., 2012; Lo Giudice et al., 2014; Klebe et al., 2015; Tesson et al., 2015; de Souza et al., 2017; Boutry et al., 2019b; Elsayed et al., 2019b). Complicating neurological features

include most frequently deterioration of the cognitive/mental functions (>46 SPG forms). The cognitive function shows variable levels of alteration with the AR complicated HSP forms having a higher degree of impairment. A recent large meta-analysis study found no report of cognitive disability in SPG3A patients although it was often reported in SPG4, the two AD HSP forms that were initially thought to be mostly pure. However, the same meta-analysis study found that the frequency of intellectual disability in AR HSP patients to be highest in SPG54 (89%) followed by SPG11 (86%), SPG15 (78%), SPG35 (71%), and SPG7 (8%) respectively (Erfanian Omidvar et al., 2019). The cerebral palsy-like HSP forms associated with mutations in genes encoding members of the AP4 complex (SPG47, SPG50, SPG51, SPG52) have been associated with severe cognitive impairment in agreement with their role in vesicular trafficking during the development of the central nervous system. All mutations reported in literature in the four genes - *AP4B1*, *AP4M1*, *AP4E1*, *AP4S1* - were loss of function variants except for a missense in *AP4M1* gene, that was reported in a Greek family by Bettencourt et al., in which there was compound heterozygosity with a loss of function mutation in one patient (Verkerk et al., 2009; Abou Jamra et al., 2011; Moreno-De-Luca et al., 2011; Bauer et al., 2012; Tüysüz et al., 2014; Abdollahpour et al., 2015; Hardies et al., 2015; Bettencourt et al., 2017; Jacinto-Scudeiro et al., 2019). Cognitive impairment is almost a universal feature in all complicated X-L recessive HSP forms which may suggest that it should be considered in the differential diagnosis in the cases of developmental delay and cognitive impairment in males. However, the reliability of these observations is doubtful as X-L HSP is rare and only a few families have been reported. Adducted thumbs are probably of better help in gene prognosis, at least in *LICAM* mutation carriers.

Peripheral neuropathy or amyotrophy (>40 HSP forms) is the second most frequent complicating feature, followed by cerebellar signs (>37 HSP subtypes), and eye signs (cataract, retinal/macular degeneration, strabismus, and optic atrophy) taken collectively (~22 forms). Clinical presentation can be further complicated by bulbar or pseudobulbar palsy, psychiatric symptoms, auditory neuropathy, extrapyramidal signs, stereotypic laughter, or epilepsy (Table 2). Because of the frequent association of CA with the spasticity and the frequent occurrence of pyramidal signs in patients with CA as the main complicating clinical symptom, the concept of ataxia-spasticity spectrum emerged. Patients with pyramidal or cerebellar signs can present with a phenotypic presentation varying along a continuum of clinico-genetic entities from pure CA, to spastic ataxia and to pure HSP. Spastic ataxias refer to disorders in which most patients have a clinical presentation with equal contribution of pyramidal and cerebellar involvement such as in spastic ataxia of Charlevoix-Saguenay, and in SPG7, SAX2, SPG43 and *RNF170* mutation carriers ((Synofzik and Schüle, 2017). The list of clinical entities designated a spastic ataxia is progressively broadening with nine syndromes given the designation of spastic ataxia “n” [SPAX “n”] to date.

Brain, and to a lesser extent spinal cord, imaging abnormalities are frequent. MRI of the brain may show atrophy (generalized or

focal: atrophy of the cerebral cortex and/or the cerebellum, and thin corpus callosum), features of dysmyelination (hypo- and demyelination), leukodystrophic changes (white matter hyper signal intensity lesions), and rarely brain malformations. Although normal MRI is frequently encountered, abnormal radiological features are common and can be found in combinations or one at a time with great variability (Figure 1). It is interesting how the list of radiological features associated with HSP is constantly broadening as well. Recent reports detected MRI features mimicking the “eye of a tiger” sign, most commonly associated with pantothenate kinase e-associated neurodegeneration (PKAN), in SPG7 and the closely related spastic ataxia 5 (*AFG3L2*-mutated) patients (Calandra et al., 2020; Rizzo et al., 2020).

Extra-neurologic organs/systems involved include the eyes (cataract, strabismus), as well as the skeletal system, the heart, the skin, the hair and the gastrointestinal system.

The rapidly expanding genetic heterogeneity has led to an additional expansion of phenotypic heterogeneity, with the list of the reported complicating neurological and extra-neurological clinical features significantly expanding also. The spectrum of the HSP phenotype has broadened extensively to include further atypical disease presentations that were not reported previously in the earlier HSP cohorts (Harding, 1983) (Table 2). Non-exhaustive illustrative examples of atypical HSP presentations that make it worth reconsidering our working case-definition include tetraplegic cerebral palsy forms associated with AP4 complex mentioned earlier (Verkerk et al., 2009; Abou Jamra et al., 2011; Bauer et al., 2012), HSP associated with hyperbilirubinemia and persistent vomiting caused by hiatus hernia (SPG29) (Orlacchio et al., 2005a), atypical HSP presentation with areflexia, apnoea, hypoventilation, ventriculomegaly, and gastro-oesophageal reflux disease in association with SPG49/TECPR2 (Oz-Levi et al., 2012, 2013), and HSP with cutis laxa and cataract (SPG9) (Coutelier et al., 2015, 2016). On the other hand, some disorders which were considered as subtypes of HSP by the earlier HSP classification suggested by Harding in 1983, such as Sjögren-Larsson syndrome and Spastic Ataxia of Charlevoix Saguenay, are no longer classified as HSP in the recent classifications of neurogenetic disorders (Harding, 1983; Vallat et al., 2016; Bindu, 2020).

In addition to the above-mentioned examples, another dimension is highlighted by the phenotypes associated with the mitochondrial genes. *MT-ATP6* and *MT-TI* cause an HSP-like phenotype sometimes associated with cardiomyopathy (Verny et al., 2011), whilst *MT-CO3* has been linked to HSP but with Leigh syndrome-like lesions in the brain (Tiranti et al., 2000).

The greatest part of clinical heterogeneity can be attributed to the AR HSP forms which mainly present as complicated HSP in contrast to the tendency of AD HSP for pure, or relatively pure clinical presentations (Fink, 1993; Finsterer et al., 2012; Lo Giudice et al., 2014; Klebe et al., 2015; Lynch et al., 2015; Tesson et al., 2015; Elsayed et al., 2016b; de Souza et al., 2017; Boutry et al., 2019b); the more patients that are reported however, the more complex forms that are found. SPG4 and SPG11/SPG7 are the most frequent pure and complex HSP forms, respectively

(Travaglini et al., 2018). These represent the commonest causes of AD HSP and AR HSP respectively in most reports (Ruano et al., 2014; Blackstone, 2018; Boutry et al., 2019a). AD HSP forms with complex presentation tend to be at low level of complexity with one or two complicating signs that are usually limited to peripheral neuropathy and amyotrophy except for SPG9, SPG29 and to a lesser extent SPG80 which show high level of complexity (Orlacchio et al., 2005a; Coutelier et al., 2015, 2016; Farazi Fard et al., 2019) (**Figure 1; Table 2**). On the other hand, the relatively rare X-L recessive HSP forms tend to present with complicated phenotypes except for SPG34, which was reported only in the pure form, and SPG16, which was found in pure and complex HSP forms.

Age at Onset and Disease Progression

Age at onset of HSP is widely variable ranging from birth in some HSP subtypes to more than 40 years. In some rare cases the disease can have rather a late onset up to 76 years (Parodi et al., 1993; 2018a). The variability of age at onset does not only occur between the different forms but can also be observed within single HSP forms and even within families in patients carrying the same mutations (**Figure 2**). This is particularly the case in dominant forms (**Figure 2**) where heterogeneity is complicated by the incomplete penetrance. A meta-analysis study including a large set of HSP studies illustrated a significant association of ethnicity with differences in the age at onset in some HSP forms (Erfanian Omidvar et al., 2019), suggesting the influence of the genetic background. This study also identified earlier mean age at onset in *ATL1* mutated patients relative to patients with other AD HSP subtypes [SPG4 and SPG31] caused by mutations in *SPAST* and *REEP1*. Among the AR HSP subtypes included in the analysis, SPG35 showed a tendency for younger age at onset (Erfanian Omidvar et al., 2019).

It is often difficult to assess the age at onset in a precise way in HSP. This can be sometimes attributed to the subtlety of the presenting motor symptoms, especially in complex forms. In the pure HSP forms, several patients do not complain of the disease but clinical signs may be detected at examination (Hedera, 1993; Finsterer et al., 2012; Lo Giudice et al., 2014; Klebe et al., 2015; Tesson et al., 2015; de Souza et al., 2017; Boutry et al., 2019b). This may result in both underestimation and overestimation of the incidence and the prevalence of HSP.

We found that the age at onset of AR HSP tends to cluster in childhood in 80% (≈ 45 forms) of the genetic forms; however, two of the most frequent forms have relatively late onset (SPG5 and SPG7). More than 34 AR HSP forms together with three X-L recessive subtypes occur in toddlers (< 5 years). AD forms do not show analogous clustering but tend to have variable age at onset. Overall, several HSP subtypes show considerable variability. Of these subtypes, with widely variable age at onset, are five AD HSP subtypes [including three of the commonest AD HSP forms (SPG4, SPG3A, SPG10)], two AR HSP (SPG11 and SPG48) and an X-L recessive HSP (SPG2) (**Figure 2**). In addition to these variations observed in the age at onset among different forms with different modes of inheritance, two large studies found a significant difference in age at onset based on the nature of the

mutation in SPG4 patients, with earlier onset in patients with missense compared to those with truncating variants (Parodi et al., 2018b; Rodrigues et al., 2019).

Most HSP subtypes are slowly progressive, particularly at the start of the disease before they reach a static plateau without improvement (Hedera, 1993; Klebe et al., 2015; de Souza et al., 2017; Boutry et al., 2019a). However, substantial variability exists regarding the disease severity and its progress. Several forms deteriorate rapidly, while many subtypes show very slowly progressive course of disease so that they can be fairly considered as non-progressive. Surprisingly, late onset forms are more often associated with a more rapidly progressive evolution. This observation was supported by analysis of large HSP patient series (Schüle et al., 2016).

Pathophysiology of HSP

Basic Pathophysiologic Mechanisms: HSPs Are Mainly Due to Neuronal Degeneration

The core phenotypic features of HSP result from axonal degeneration of neurons of the pyramidal motor system which is responsible for the voluntary movements in humans. The neurons of the pyramidal tracts extend from the layer V of the cerebral motor cortex and, after synaptic connection in the spinal cord with the secondary motor neuron, finally innervate the skeletal muscles at the neuromuscular junctions. Neurons are the principal category of cells that degenerate in HSP, even though the contribution of oligodendrocytes and other glial cells to the pathology of HSP cannot be ignored since several HSP genes are expressed in non-neuronal cells (Blackstone, 2012).

Neurons are polarized cells (Kevenaar and Hoogenraad, 2015) and the pyramidal tract neurons can be injured in a length dependent manner through a dying-back mechanism of their axons. Since the longest axons are more susceptible, this leads to the primary clinical involvement of the lower limbs (LLs) (Deluca et al., 2004; Blackstone, 2012, 2018). In the complex phenotypes, further regions of the central and peripheral nervous systems (CNS and PNS) alongside other extra-neurological organs and systems can also be involved. In these other tissues, the degeneration of cell bodies occurs in interneurons with shorter axons as well and then the dying-back hypothesis is less evident.

Pathways Involved in HSP Pathogenesis

When the function of the affected HSP protein is known or could be inferred from their loss of function in models, they can be grouped into common cellular pathways based on ontology terms. In this article, we could distinguish 11 major functional themes (**Supplementary Figure, Table 3**). HSP genes encode proteins of known or suspected functions mainly in intracellular trafficking (membrane traffic and energy-dependent transport), organelle shaping, myelination, development, metabolism (predominantly lipid metabolism), recycling/degradation, cytoskeleton dynamics, mitochondrial functions, and signaling pathways. However, it recently emerged that dysfunction of one cellular organelle or function can have a deep impact on other cellular functions (**Figure 3**). For example, proteins implicated in the cytoskeleton dynamics such as spastin, can participate in

organellar shaping particularly in ER morphogenesis, or modulate the formation of lipid droplets (LD) which can be considered as the intersection of these pathways with lipid metabolism in the pathogenesis of HSP (**Figure 3**) (Papadopoulos et al., 2015; Tadepalle and Rugarli, 2021). Furthermore, loss of spatacsin (SPG11) that promotes tubule formation on lysosomes also affects sphingolipid metabolism and leads to impairment of cholesterol recycling from lysosomes resulting in their accumulation and decrease in the cholesterol content of the plasma membrane which allowed us to include SPG11 as the 17th HSP form involving lipid metabolism (Boutry et al., 2018; 2019a).

Another example is SPG7, in which alteration of the axonal transport due to mitochondrial impairment resulted in axonal degeneration due to traffic jam as was observed in paraplegin-deficient mice (Ferreirinha et al., 2004). In addition, numerous proteins produced from SPG genes are currently found to be connected with multiple cellular functions and are known to interact with numerous proteins which are either involved in the same pathway (or inter-digitations of pathways) or share the same gene ontology function (**Figure 3**) (**Supplementary Figure, Table 3**). It is then likely that alteration of one given HSP protein will impact multiple cellular functions. An HSP network has been produced to connect all known HSP proteins to hundreds of other potential HSP proteins (Novarino et al., 2014). This demonstrates how far we stand back from understanding the mechanisms of these disorders and make phenotype-genotype correlations difficult to establish.

One of the first identified mechanisms to be related to HSP was the disruption of the axonal transport, which was supported by the identification of several HSP genes that encode kinesin chains (*KIF5A* and later, *KIF1A*, *KIF1C*), essential members of the anterograde microtubule-dependent axonal transport (Crosby and Proukakis, 2002; Reid et al., 2002). Trafficking in the cell is probably the most frequent alteration found in HSP and is dependant on microtubule dynamics and mitochondrial functions, two other often affected pathways in HSP. The correct trafficking of vesicles and organelles is essential for neurons as well as is the turn-over of membranes and signaling machinery degradation. There is an obvious overlap between these functions in some forms of HSP. Trafficking involving kinesins necessitates functional mitochondria which are affected functionally and/or structurally in SPG7, SPG31, and SPG56 (Goizet et al., 2011; Tesson et al., 2012; Shanmughapriya et al., 2015; Lavie et al., 2017; Wali et al., 2020).

Another aspect of the problem in HSP is the endomembrane and autophagy/lysosomal trafficking (Toupenet Marchesi et al., 2021) which are interconnected with the signaling and receptor recycling/degradation. Cells depend on a highly regulated and dynamic membrane trafficking system for proper intracellular distribution of proteins, lipids, and complex carbohydrates. This transport relies on membrane-bound vesicles and can occur within different organelles inside the cell, or through the plasma membrane to and from the extracellular environment. Numerous HSP proteins are implicated in membrane trafficking, including regulators of the vesicle and endosomal trafficking and proteins involved in the morphogenesis of the organelles

involved, mainly the endoplasmic reticulum (ER). *ATL1* (SPG3A) encodes a dynamin-related GTPase, which is present in both the ER and the Golgi compartments. Disease-causing variants in this gene not only lead to altered vesicle trafficking between ER and Golgi but also to altered Golgi morphogenesis (Namekawa et al., 2007). *AP4B1* (SPG47), *AP4M1* (SPG50), *AP4E1* (SPG51), and *AP4S1* (SPG52) encode proteins that constitute the adaptor protein 4 (AP-4) complex, which mediates vesicle formation and sorting of cargo for vesicles included in the secretory and endocytic pathways (Abou Jamra et al., 2011; Hirst et al., 2013). *AP5Z1* (SPG48), which encodes one of the subunits of the adaptor protein 5 (AP-5) complex, was also found to be involved in endosomal sorting, and to interact with spatacsin (SPG11) and zinc finger FYVE domain-containing protein 26 (SPG15), involved in the recycling of lysosomes (Chang et al., 2014; Renvoisé et al., 2014; Hirst et al., 2015, 2018). Magnesium transporter *NIPA1* (SPG6) is a neuron-specific transmembrane protein expressed in early endosomes, cell surfaces, and the Golgi. It co-localizes with atlastin-1, and both were characterized as binding partners, with knock-down of *NIPA1* expression resulting in a marked reduction of atlastin-1 in neuronal processes (Botzolakis et al., 2011). A rat model with a *NIPA1* causative variant showed accumulation of tubular-vesicular organelles with endosomal features starting at axonal and dendritic terminals, followed by multifocal vacuolar degeneration in the CNS and peripheral nerves (Watanabe et al., 2013). *WASHC5*, formerly known as *KIAA0196* (SPG8) encodes a subunit of the large protein complex WASH, which connects endosomes to the cytoskeleton, through interaction with vacuolar protein sorting-associated protein 35 (VPS35) (Harbour et al., 2012). Phospholipase *DDHD1* (SPG28) and phospholipase *DDHD2* (SPG54) are two enzymes making the link between membrane-sorting and lipid metabolism: *DDHD2* localizes to the cis-Golgi and also to the ER-Golgi intermediate compartment suggesting that it facilitates membrane and vesicle fusion by the modification of membranes through phospholipid hydrolysis (Inoue et al., 2012; Schuur-Hoeijmakers et al., 2012; Yadav and Rajasekharan, 2016). *TECPR2* (SPG49) brought a new pathway to the HSPs, linking autophagy with the disease. Autophagy is a complex process responsible for the transport and degradation of cytoplasmic components in the lysosomes, which include compromised proteins and organelles. *TECPR2* encodes a member of the tectonin β -propeller repeat-containing family, containing both *TECPR* and tryptophan-aspartic acid repeat (WD repeat) domains. *SPG11* and *ZFYVE26* (SPG15) encoded proteins are also linked to autophagy due to their role in autophagic lysosome reformation (Chang et al., 2014).

Microtubules dynamics is highly related to organellar shaping and transport. This can be well illustrated by the role that the microtubules perform in the neurons. Microtubules keep the organellar organization thus maintaining the shape of these subcellular organelles (**Figure 3**). They also perform a vital role in neuronal development through their function in polarized axonal transport. Spastin (SPG4) is a key element of the microtubule dynamics, important for axonal growth, cellular fluidity and organellar structure (Errico et al., 2002; Butler et al., 2010; Solowska et al., 2014; Penazzi et al., 2016; Jeong et al., 2019).

Atlastin (SPG3), RTN2 and REEP1/2 (SPG31, SPG72) are good illustrations of the implication of an abnormal shaping of the ER in HSP (Park et al., 2010; Esteves et al., 2014). The ER is a multifunctional organelle involved in several essential tasks for the cell, being the most abundant membrane compartment. It is responsible for the synthesis, modification, quality control and trafficking of secreted and integral membrane proteins and has a role in the Ca^{2+} regulation, lipid and sterol biosynthesis and distribution, carbohydrate metabolism, peroxisome biogenesis, and the formation of enzymes involved in drug detoxification. Additionally, ER interacts with several other membranes, including mitochondria, the Golgi apparatus, the plasma membrane, and with LDs.

Causative variants in *ATL1* (SPG3A) are the second most frequent cause of AD HSP. This gene encodes the protein atlastin-1, a member of the superfamily of dynamin-related GTPases that localize predominantly to the tubular ER and mediate the fusion of ER tubules (Hu et al., 2009; Orso et al., 2009). *RTN2* (SPG12) encodes reticulon 2, which also localizes to the ER tubules and that acts together with DP1/Yop1 as curvature-stabilizing proteins (Voeltz et al., 2006). *REEP1* (SPG31) and *REEP2* (SPG72) are part of the REEP/DP1/Yop1p family of ER-shaping proteins, which like RTN2 protein has two hydrophobic domains that, when inserted into the phospholipid bilayer, are thought to form hairpin loops generating a curvature in the ER membrane. Spastin interacts with atlastin-1, REEP1 and reticulon two proteins and they all seem to contribute to the shaping of the tubular ER network (Voeltz et al., 2006; Shibata et al., 2010; Beetz et al., 2013; Esteves et al., 2014). The microtubule-based motility in the ER is important for the proper organization and distribution of the ER tubules and the impairment of this link between the tubular ER and the microtubule cytoskeleton seems to be one of the HSP pathogenic mechanisms (Blackstone, 2012). Pathogenic *SPAST* variants (SPG4) affecting the AAA domain lead to constitutive binding to microtubules and then a dominant negative effect, and a mutant version of the M1-spastin isoform, specific to motor neurons, seems toxic by altering dynamic trafficking (Errico et al., 2002). However, there has been a debate for years about the effects of variants in *SPAST*. *SPAST* haploinsufficiency is the most prevalent opinion because of the existence of the truncating variants and because mutant spastin has not been detected on patients' cells when tested. However, *SPAST* KO in the mouse does not reproduce the disease. In addition, a mouse model overexpressing at least one missense mutation in spastin has a phenotype at the heterozygous state with accumulation in neurites and decreased microtubule stability (Solowska et al., 2010, 2014)). We can postulate that haploinsufficiency contributes to neuronal vulnerability while some missense mutations act also by additional toxicity. Other genes whose proteins are associated with ER morphogenesis include *TFG* (SPG57). The TFG protein is important for the organization of transitional ER and ER exit sites into larger structures and variants in this gene lead to a disruption of the peripheral ER tubules organization and collapse of the ER network (Beetz et al., 2013; Elsayed et al., 2016b; McCaughy et al., 2016). *BSCL2* (SPG17), *ERLIN1* (SPG62), and *ERLIN2* (SPG18) encode

proteins that also localize to the ER and relate to both ER and lipid metabolism pathways due to the key function of the ER in the synthesis, metabolism, and distribution of lipids and sterols (Blackstone, 2012). *BSCL2* encodes an ER protein thought to act at the interface of the ER with LDs, regulating their size. *ERLIN2* (SPG18) and *ERLIN1* (SPG62) encode proteins that localize preferentially to cholesterol-rich domains including lipid rafts, and are involved in the regulation of cellular cholesterol homeostasis. Additionally, ERLIN proteins are associated with ER-associated degradation (ERAD) that regulates protein degradation by the ubiquitin-proteasome machinery (Browman et al., 2006; Huber et al., 2013).

Mitochondria are very important organelles, that in addition to their role in producing ATP, are involved both in the response mechanisms to oxidative stress and apoptosis and are a source of toxic-free radicals. In HSP, at least 10 genes were already associated with mitochondrial dysfunction. *SPG7* encodes a protein, that together with *AFG3L2*, the gene which has been associated with Spastic ataxia 5 (AR) and Spinocerebellar ataxia 28 (AD), form the m-AAA metalloprotease complex of the inner mitochondrial membrane. This protease functions in protein quality control and is necessary for the regulation of ribosomal assembly (Atorino et al., 2003; Nolden et al., 2005). Fibroblasts from *SPG7* patients showed reduced activity of complex I in the mitochondrial respiratory chain, and increased sensitivity to oxidative stress with increased mitochondrial DNA damage (Wedding et al., 2014). In a mouse model for *SPG7*, mitochondrial morphological abnormalities were observed in the synaptic terminals and distal regions of axons, correlating with the onset of motor impairment, and prior to axonal swelling and degeneration. The axonal swelling occurred due to a huge accumulation of organelles and neurofilaments, suggesting impairment of anterograde axonal transport, which may indicate that the axonal transport impairment could be secondary to mitochondrial dysfunction (Figure 3) (Ferreirinha et al., 2004; Rugarli and Langer, 2006). *CYP2U1* (SPG56) encodes an enzyme involved in lipid metabolism, which seems to have a folate-dependent neurodevelopmental component followed by a deleterious impact on mitochondrial bioenergetic function with patients' fibroblasts showing alteration of mitochondrial architecture and bioenergetics with increased oxidative stress (Tesson et al., 2012; Pujol et al., 2021).

Lipid metabolism was recently identified as a mechanism highly affected in HSP, quite predictable, as the brain is highly enriched in lipids. Lipid metabolism is affected directly in 17 different entities and their number is constantly growing. The involvement of lipids in HSP pathogenicity and neurodegeneration can be through disturbed lipid metabolism or lipid distribution affecting various subcellular organelles and their function. However, this is not the whole story; as accumulating evidence also shows that HSP genes affecting various subcellular compartments can also alter lipid metabolism. This might make the 17 SPG forms involving disturbed lipid metabolism in our classification (Supplementary Figure, Table 3) just the tip of an iceberg. Furthermore, there is a remarkable number of genes/proteins which directly involve lipid metabolism causing other

neurogenetic disorders with HSP-like presentation or HSP (as an allelic presentation). This overlap zone includes a broad spectrum of spastic (non-HSP) neurogenetic entities and a remarkable variety of underlying genes: *CYP27A1* [cerebrotendinous xanthomatosis (CTX)], *SERAC1* [AR: 3-methylglutaconic aciduria with deafness, encephalopathy, and Leigh-like syndrome), *PLA2G6* (a spectrum of AR neurodegenerative disorders including: HSP, infantile neuroaxonal dystrophy (INAD), and neurodegeneration with brain iron accumulation, parkinsonism (NBIA), *GALC* [AR: galactosylceramide lipidosis (Krabbe disease), *ARSA* [AR: metachromatic leukodystrophy (MLD)], *ABCD1* [X-linked Adrenoleukodystrophy (X-ALD)], *ELOVL1* [AR: ichthyotic keratoderma, spasticity, hypomyelination and dysmorphic features (IKSHD)], *ELOVL4* [AR: ichthyosis, intellectual disability and spastic quadriplegia (ISQMR); AD: SCA34, Stargardt disease 3 ((STGD3)], *ALDH3A2* [Sjögren-Larsson Syndrome (SLS)]. This long list of examples provides clear evidence that the existing phenotypic classes of neurogenetic disorders need to be reconsidered (Darios and Stevanin, 2020; Tadepalle and Rugarli, 2021). Various types of lipids are involved in spastic neurodegeneration including precursor lipids as cholesterol and fatty acids as well as complex lipids like phospholipids and sphingolipids. Disturbed biosynthesis and degradation of these lipids can lead to either deficiencies of molecules with functional importance, or pathogenic accumulation of precursors or undegraded damaged molecules with toxic effect, all resulting in neurodegeneration (Darios and Stevanin, 2020; Tadepalle and Rugarli, 2021).

Lipids play many different roles from storing energy, to electrical insulation in myelin, and modulation of cellular calcium signaling and other signal transduction cascades. Additionally, they are important structural components of cell membranes. The composition of the membranes in lipids and sterols controls membrane fluidity, as well as compartmentalization into specialized microdomains and functions. Altered enzymatic activities is the predominant mechanism mediating the involvement of disturbed lipid metabolism in HSP pathogenesis, facilitating the identification of biomarkers and therapeutic targets. The first gene to be associated with lipid metabolism was *CYP7B1* (SPG5), which codes for a 7 α -hydroxylase involved in cholesterol metabolism. More precisely, it works in two pathways: the “alternate/acidic pathway,” and the conversion of the cholesterol derivative dehydroepiandrosterone (DHEA) into 7-OH-DHEA. Additionally, there is growing evidence to suggest that this DHEA-related neurosteroids act as neuroprotective factors, and can reduce ischemia-induced neurodegeneration, which could relate *CYP7B1* disease-causing variants with a loss of this neuroprotective role (Tsaousidou et al., 2008). In addition, the enzymatic blockage of the pathway by the mutated *CYP7B1* enzyme led to the accumulation of accumulation of *CYP7B1* substrates (three oxysterols) including 25- and 27-hydroxycholesterol [25- and 27-hydroxysterol (27-OH)] in cerebrospinal fluid and serum (Schüle et al., 2010), which were demonstrated to be toxic to neurons in cultures (Schöls et al., 2017).

The development and maintenance of axons and myelin are also affected. This is particularly well illustrated by a pathway linking multiple HSP genes: the BMP signaling cascade. BMP signaling is essential for normal axonal function and axonal guidance (pathfinding), growth, and differentiation in the nervous system in mammals and other smaller models (eg. *Drosophila*) implying an important impact on the pathogenesis of the axonal degeneration. Numerous HSP proteins influence the BMP signaling pathway; these include Spastin (causing SPG4, the commonest AD HSP) in addition to Magnesium transporter NIPA1 (SPG6, AD), Maspardin (SPG20, AR), Spastizin (SPG15, AR), Atlantin (SPG3A, AD/AR), and PNPLA6 (SPG39), influence the BMP signaling pathway (Charron and Tessier-Lavigne, 2007; Wang et al., 2007, 2014; Wen et al., 2007; Tsang et al., 2009; Fassier et al., 2010; Bayat et al., 2011; Hegarty et al., 2013; Nahm et al., 2013; Song et al., 2013). Some of these diseases are late-onset and this suggests that abnormal development may contribute to the sensitization of the neuronal connections which will exert their deleterious action later in life. On the other hand, neural development itself, including myelination, is affected in multiple HSP forms as shown by abnormal branching of axons in animal models (Martin et al., 2013). For some forms, the age at onset implies the direct involvement of improper development in the pathology such as in AP4 syndromes (Behne et al., 2020) or SPG11 (Stevanin et al., 2007b; Pozner et al., 2020). Another example is given by the recent study showing partial phenotypic recovery of the mouse model of SPG56 using folate supplementation during fetal life (Pujol et al., 2021).

Are there any possible phenotype-genotype correlations that can be suggested?

Despite the marked inter-digitation of pathways and contribution of a number of HSP proteins in multiple pathways, our functional classification (**Supplementary Figure**) allows to observe a few connections between the pathogenic pathways and the clinical presentation, age at onset and patterns of inheritance, that can help in solving a small part of the HSP puzzle. Overall, AR forms are observed to involve principally the metabolic pathways (lipids and nucleotide metabolism), in addition to the degradation pathways, myelination and the endomembrane trafficking, in agreement with the need for a complete loss of function to alter the pathway. On the other hand, AD HSPs are largely clustering in the microtubule dynamics, organelle shaping, development, and active cellular transport (often with mixed transmission) functional categories. Age at onset is not a discriminant of the altered functions except for some tendency for childhood-onset in forms related to lipids (11/17) and nucleotides (3/3) metabolism. Early childhood-onset was also observed in 9/19 forms affecting endomembrane trafficking which is probably because of their suggested roles during development. It is worth noting that all nine forms associated with the degradation pathway, present with cerebellar ataxia. The link between cerebellar syndrome and the degradation pathways is well known in the pathogenesis of AD cerebellar ataxias. Degradation of cellular inclusions is the basis of numerous subtypes of hereditary ataxia (HA) especially the polyglutamine AD cerebellar ataxias (PolyQ: SCA). In these disorders, the proteasomal and lysosomal degradation pathways stand as the chief cellular defense mechanisms against the aggregates (the hallmark of the polyQ disorders) (Seidel et al., 2015; Mori et al., 2016). Cognitive decline and intellectual disability were

reported in forms that clustered in the functional categories with an influence on endomembrane trafficking [17/19 forms], myelination [7/7 forms], lipid metabolism [11/17 forms], and degradation pathways [8/9]. It is worth noting that although SPG3A affects endomembrane trafficking with no previous association with cognitive impairment, recent studies started to detect cases with cognitive decline from different ethnic backgrounds (Fusco et al., 2012; Terada et al., 2013; Erfanian Omidvar et al., 2019). This again points to the constantly evolving capacities of the possible phenotype-genotype correlations in HSP.

Therapeutic Options and Opportunities

For all patients except those who are dopa-responsive, rehabilitation therapies, such as physical or speech therapy are the main proposed therapy. Physical therapy is based on passive tendon stretching, gait, and equilibrium rehabilitation. According to the functional repercussion of spasticity, medications used to decrease spasticity such as oral baclofen, intramuscular botulinum toxin, or intrathecal baclofen are often used. Orthopedic solutions such as special shoes for pes cavus, or Achilles tenotomy for equinovarus are also proposed to allow a longer autonomous gait. Sphincter disturbances should be confirmed by urologists and possible treatment options include oxybutynin chlorhydrate or trospium chlorure. Social solutions are proposed when patients cannot manage themselves anymore. Dancing and exergames are also proposed to preserve as much as possible motor and gait capacities (Synofzik and Ilg, 2014).

There is no curative treatment available yet for HSP patients. When dealing with rare diseases, one might want to find a common drug target for multiple HSP forms. The question which immediately arises is if there is a unifying theme. All functional subcategories are overlapping and interplay together. Lipid metabolism is important for membrane trafficking and signaling. Trafficking is dependent on ATP production provided by mitochondria. Organelle shaping is performed along cytoskeleton, and organelle functions are dependent on their shaping and trafficking. Animal models, and thus probably patients, show functional consequences of multiple pathways such as the accumulation of membranes along axons in the SPG7 KO mouse modeling the loss of function of a mitochondrial protein (Ferreirinha et al., 2004) or the abnormal mitochondrial network in SPG56 patients in which an enzyme of the lipid metabolism is affected (Tesson et al., 2012). The interplay between all these functional pathways makes it theoretically feasible to find drugs that could be active in multiple HSPs.

In practice however, multiple pathways are probably affected in all HSP, which makes it difficult to find a common cure to all aspects of the disease efficient in multiple HSP subtypes.

Another bottleneck in drug development is the lack of biomarkers available. They may play an important role in helping in the monitoring of disease progression and response to treatment in clinical trials and preclinical testing in animal models. There are very few diagnostic non-clinical and laboratory-based findings - hormonal disturbances, biochemical changes, and accumulation of various metabolites

- which are associated with specific phenotypes in several instances (Table 3). We can cite the accumulation of 27- and 25-hydroxycholesterol in CSF and blood of SPG5 patients (Schöls et al., 2017; Marelli et al., 2018), testosterone levels in blood in SPG46 males (Martin et al., 2013), levels of plasmatic amino-acids in *ALDH18A1* (SPG9) variant carriers (Coutelier et al., 2015), abnormal etherlipid profile in SPG82 (Vaz et al., 2019), brain imaging volumetry in SPG11 (Cardozo-Hernández et al., 2020), Coenzyme Q10/neoopterin and brain calcifications in SPG56 (Pujol et al., 2021), and abnormal lipid peak at cerebral resonance spectroscopy in *DDHD2* (SPG54) mutation carriers (Schuurs-Hoeijmakers et al., 2012). Most of them are found in clinico-genetic entities affecting directly the lipid metabolism (Darios and Stevanin, 2020) but the abnormal lipid profiles in SPG11 (Boutry et al., 2018; 2019b) show that the lipid homeostasis is critical for proper functioning of most cellular functions in neurons.

Numerous preclinical studies on animal models have given promising results. They include drugs which target microtubules and act to regulate their stability in SPG4 models (Trotta et al., 2004; Orso et al., 2005) and in iPSC models of SPG3 (Zhu et al., 2014). Replacement therapies gave interesting results to compensate for loss of function, including the intracerebral injection of *CYP7B1* mRNA in SPG5 mimicking mouse models (Hauser et al., 2019) or viral delivery of proteins such as paraplegin in SPG7 models (Pirozzi et al., 2006) and spastin in neurons derived from iPSC of SPG4 patients (Havlicek et al., 2014). Among forms affecting directly the autophagy and lysosomal pathways, miglustat was successfully used to reduce ganglioside accumulation in SPG11 zebrafish models (Boutry et al., 2018), and tideglusib, a GSK3b inhibitor, prevented the neurite pathology in brain organoids of SPG11 patients (Pozner et al., 2018). Autophagy regulators might also be of interest in SPG48 (Breza et al., 2021) and rapamycin partially reversed the phenotype induced by *Atlastin-1* loss of function in flies (Xu et al., 2017). In zebrafish mimicking SPG3, the modulation of the BMP pathway was also of interest to rescue the motor phenotype (Fassier et al., 2010). Even more promising data include the FDA approved molecules/drugs acting to decrease ER stress in SPG4 and SPG31 (Vaccaro et al., 2013; Julien et al., 2016). Folate supplementation was successfully used to improve the cognitive deficit in a SPG56 mouse model (Pujol et al., 2021). Finally, cholesterol-lowering drugs such as statins have been used in clinical trials in SPG5 patients but failed to reduce significantly the toxic 27-OH cholesterol in the CSF vs plasma (Schöls et al., 2017).

CONCLUSION: AT THE CROSSROADS OF MOLECULAR PATHWAYS AND CLINICAL OPTIONS

It is still crucial to improve the identification of the genetic causes of HSP for various reasons. First, it provides the patient with a conclusive explanation, giving closure to an often long diagnostic wandering. Furthermore, once the gene, mutation, and transmission mode have been identified, it allows for accurate

genetic counselling. Another prominent reason is that discovering all genes involved is important for the identification of unifying mechanisms, which offer better hope of treatment options because they increase the number of patients available. In addition, other approaches may be useful for treatment options and may result from understanding the clinical heterogeneity. Very few initiatives have been reported to search for its aetiology. Understanding the links between the various clinical presentations and the affected molecular pathways may well be useful for better deciphering of the mechanisms implicated in the causation of HSP. This will help identify the suitable biomarkers to be used and shed light on the possible predictors of disease onset, progression and guide the choices of treatment options, for better functional outcome and quality of life.

AUTHOR CONTRIBUTIONS

LE, IE, AA, and GS have contributed to the design of the work. LE and IE worked on the acquisition of the data. LE, IE, GS, and AA

participated in drafting the review and revising it critically to bring it to the required intellectual level and all authors provided their approval for publication of the content. LE, IE, AA, and GS agreed to be responsible for the work warranting that questions associated with the integrity and accuracy of the work or any part of it are investigated and fixed appropriately.

FUNDING

This research was funded by the European Union through the HORIZON 2020 programme SOLVE-RD (to GS).

SUPPLEMENTARY MATERIAL

The Supplementary Material for this article can be found online at: <https://www.frontiersin.org/articles/10.3389/fmolb.2021.690899/full#supplementary-material>

REFERENCES

- Abdollahpour, H., Alawi, M., Kortüm, F., Beckstette, M., Seemanova, E., Komárek, V., et al. (2015). An AP4B1 Frameshift Mutation in Siblings with Intellectual Disability and Spastic Tetraplegia Further Delineates the AP-4 Deficiency Syndrome. *Eur. J. Hum. Genet.* 23, 256–259. doi:10.1038/ejhg.2014.73
- Abou Jamra, R., Philippe, O., Raas-Rothschild, A., Eck, S. H., Graf, E., Buchert, R., et al. (2011). Adaptor Protein Complex 4 Deficiency Causes Severe Autosomal-Recessive Intellectual Disability, Progressive Spastic Paraplegia, Shy Character, and Short Stature. *Am. J. Hum. Genet.* 88, 788–795. doi:10.1016/j.ajhg.2011.04.019
- Ahmed, M. Y., Al-Khayat, A., Al-Murshedi, F., Al-Futaisi, A., Chioza, B. A., Pedro Fernandez-Murray, J., et al. (2017). A Mutation of EPT1 (SELENO1) Underlies a New Disorder of Kennedy Pathway Phospholipid Biosynthesis. *Brain* 140, 547–554. doi:10.1093/brain/aww318
- Akawi, N., McRae, J., McRae, J., Ansari, M., Balasubramanian, M., Blyth, M., et al. (2015). Discovery of Four Recessive Developmental Disorders Using Probabilistic Genotype and Phenotype Matching Among 4,125 Families. *Nat. Genet.* 47, 1363–1369. doi:10.1038/ng.3410
- Al-Yahyaee, S., Al-Gazali, L. I., De Jonghe, P., Al-Barwany, H., Al-Kindi, M., De Vriendt, E., et al. (2006). A Novel Locus for Hereditary Spastic Paraplegia with Thin Corpus Callosum and Epilepsy. *Neurology* 66, 1230–1234. doi:10.1212/01.wnl.0000208501.52849.dd
- Alazami, A. M., Adly, N., Al Dhalaan, H., and Alkuraya, F. S. (2011). A Nullimorphic ERLIN2 Mutation Defines a Complicated Hereditary Spastic Paraplegia Locus (SPG18). *Neurogenetics* 12, 333–336. doi:10.1007/s10048-011-0291-8
- Amin, M., Vignal, C., Hamed, A. A. A., Mohammed, I. N., Elseed, M. A., Drunat, S., et al. (2021). Novel Variants Causing Megalencephalic Leukodystrophy in Sudanese Families. *J. Hum. Genet.* doi:10.1038/s10038-021-00945-7
- Angelini, C., Goizet, C., Said, S. A., Camu, W., Depienne, C., Heron, B., et al. (2021). Evidence of Mosaicism in SPAST Variant Carriers in Four French Families. *Eur. J. Hum. Genet.* 29, 1158–1163. doi:10.1038/s41431-021-00847-4
- Atorino, L., Silvestri, L., Koppen, M., Cassina, L., Ballabio, A., Marconi, R., et al. (2003). Loss of M-AAA Protease in Mitochondria Causes Complex I Deficiency and Increased Sensitivity to Oxidative Stress in Hereditary Spastic Paraplegia. *J. Cel Biol.* 163, 777–787. doi:10.1083/jcb.200304112
- Bauer, P., Leshinsky-Silver, E., Blumkin, L., Schlipf, N., Schröder, C., Schicks, J., et al. (2012). Mutation in the AP4B1 Gene Cause Hereditary Spastic Paraplegia Type 47 (SPG47). *Neurogenetics* 13, 73–76. doi:10.1007/s10048-012-0314-0
- Bayat, V., Jaiswal, M., and Bellen, H. J. (2011). The BMP Signaling Pathway at the Drosophila Neuromuscular Junction and its Links to Neurodegenerative Diseases. *Curr. Opin. Neurobiol.* 21, 182–188. doi:10.1016/j.conb.2010.08.014
- Beetz, C., Johnson, A., Schuh, A. L., Thakur, S., Varga, R.-E., Fothergill, T., et al. (2013). Inhibition of TFG Function Causes Hereditary Axon Degeneration by Impairing Endoplasmic Reticulum Structure. *Proc. Natl. Acad. Sci.* 110, 5091–5096. doi:10.1073/pnas.1217197110
- Beetz, C., Nygren, A. O. H., Schickel, J., Auer-Grumbach, M., Bürk, K., Heide, G., et al. (2006). High Frequency of Partial SPAST Deletions in Autosomal Dominant Hereditary Spastic Paraplegia. *Neurology* 67, 1926–1930. doi:10.1212/01.wnl.0000244413.49258.f5
- Behne, R., Teinert, J., Wimmer, M., D'Amore, A., Davies, A. K., Scarrott, J. M., et al. (2020). Adaptor Protein Complex 4 Deficiency: a Paradigm of Childhood-Onset Hereditary Spastic Paraplegia Caused by Defective Protein Trafficking. *Hum. Mol. Genet.* 29, 320–334. doi:10.1093/hmg/ddz310
- Ben Hamida, M., Chaabouni, H., Madani, S., Boussen, S., Samoud, S., Letaief, F., et al. (1986). Genetic Study of Spinocerebellar Hereditary Degenerations in Tunisia. Role of Consanguinity in Their Occurrence. *J. Genet. Hum.* 34, 267–274.
- Bettencourt, C., Salpietro, V., Efthymiou, S., Chelban, V., Hughes, D., Pittman, A. M., et al. (2017). Genotype-phenotype Correlations and Expansion of the Molecular Spectrum of AP4M1-Related Hereditary Spastic Paraplegia. *Orphanet J. Rare Dis.* 12, 172. doi:10.1186/s13023-017-0721-2
- Bilguvar, K., Tyagi, N. K., Ozkara, C., Tuysuz, B., Bakircioglu, M., Choi, M., et al. (2013). Recessive Loss of Function of the Neuronal Ubiquitin Hydrolase UCHL1 Leads to Early-Onset Progressive Neurodegeneration. *Proc. Natl. Acad. Sci. USA* 110, 3489–3494. doi:10.1073/pnas.1222732110
- Bindu, P. S. (2020). Sjogren-Larsson Syndrome: Mechanisms and Management. *Tacg* 13, 13–24. doi:10.2147/TACG.S193969
- Bis-Brewer, D. M., and Züchner, S. (2018). Perspectives on the Genomics of HSP Beyond Mendelian Inheritance. *Front. Neurol.* 9, 958. doi:10.3389/fneur.2018.00958
- Blackstone, C. (2012). Cellular Pathways of Hereditary Spastic Paraplegia. *Annu. Rev. Neurosci.* 35, 25–47. doi:10.1146/annurev-neuro-062111-150400
- Blackstone, C. (2018). Converging Cellular Themes for the Hereditary Spastic Paraplegias. *Curr. Opin. Neurobiol.* 51, 139–146. doi:10.1016/j.conb.2018.04.025
- Blumen, S. C., Bevan, S., Abu-Mouch, S., Negus, D., Kahana, M., Inzelberg, R., et al. (2003). A Locus for Complicated Hereditary Spastic Paraplegia Maps to Chromosome 1q24-Q32. *Ann. Neurol.* 54, 796–803. doi:10.1002/ana.10768
- Botzolakis, E. J., Zhao, J., Gurba, K. N., Macdonald, R. L., and Hedera, P. (2011). The Effect of HSP-Causing Mutations in SPG3A and NIPA1 on the Assembly,

- Trafficking, and Interaction Between Atlastin-1 and NIPA1. *Mol. Cell Neurosci.* 46, 122–135. doi:10.1016/j.mcn.2010.08.012
- Bouhouche, A., Benomar, A., Bouslam, N., Chkili, T., and Yahyaoui, M. (2006). Mutation in the Epsilon Subunit of the Cytosolic Chaperonin-Containing T-Complex Peptide-1 (Cct5) Gene Causes Autosomal Recessive Mutilating Sensory Neuropathy with Spastic Paraplegia. *J. Med. Genet.* 43, 441–443. doi:10.1136/jmg.2005.039230
- Boukhris, A., Feki, I., Elleuch, N., Miladi, M. I., Boland-Augé, A., Truchetto, J., et al. (2010). A New Locus (SPG46) Maps to 9p21.2-q21.12 in a Tunisian Family with a Complicated Autosomal Recessive Hereditary Spastic Paraplegia with Mental Impairment and Thin Corpus Callosum. *Neurogenetics* 11, 441–448. doi:10.1007/s10048-010-0249-2
- Boukhris, A., Schule, R., Loureiro, J. L., Lourenço, C. M., Mundwiller, E., Gonzalez, M. A., et al. (2013). Alteration of Ganglioside Biosynthesis Responsible for Complex Hereditary Spastic Paraplegia. *Am. J. Hum. Genet.* 93, 118–123. doi:10.1016/j.ajhg.2013.05.006
- Boukhris, A., Stevanin, G., Feki, I., Denis, E., Elleuch, N., Miladi, M. I., et al. (2008). Hereditary Spastic Paraplegia with Mental Impairment and Thin Corpus Callosum in Tunisia. *Arch. Neurol.* 65, 393–402. doi:10.1001/archneur.65.3.393
- Boukhris, A., Stevanin, G., Feki, I., Denora, P., Elleuch, N., Miladi, M., et al. (2009). Tunisian Hereditary Spastic Paraplegias: Clinical Variability Supported by Genetic Heterogeneity. *Clin. Genet.* 75, 527–536. doi:10.1111/j.1399-0004.2009.01176.x
- Bouslam, N., Benomar, A., Azzedine, H., Bouhouche, A., Namekawa, M., Klebe, S., et al. (2005). Mapping of a New Form of Pure Autosomal Recessive Spastic Paraplegia (SPG28). *Ann. Neurol.* 57, 567–571. doi:10.1002/ana.20416
- Boutry, M., Branchu, J., Lustremant, C., Pujol, C., Pernelle, J., Matusiak, R., et al. (2018). Inhibition of Lysosome Membrane Recycling Causes Accumulation of Gangliosides that Contribute to Neurodegeneration. *Cel Rep.* 23, 3813–3826. doi:10.1016/j.celrep.2018.05.098
- Boutry, M., Morais, S., and Stevanin, G. (2019a). Update on the Genetics of Spastic Paraplegias. *Curr. Neurol. Neurosci. Rep.* 19, 18. doi:10.1007/s11910-019-0930-2
- Boutry, M., Pierga, A., Matusiak, R., Branchu, J., Houlegatte, M., Ibrahim, Y., et al. (2019b). Loss of Spatacsin Impairs Cholesterol Trafficking and Calcium Homeostasis. *Commun. Biol.* 2. doi:10.1038/s42003-019-0615-z
- Bouwkamp, C. G., Afawi, Z., Fattal-Valevski, A., Krabbendam, I. E., Rivetti, S., Masalha, R., et al. (2018). ACO2 Homozygous Missense Mutation Associated with Complicated Hereditary Spastic Paraplegia. *Neurol. Genet.* 4, e223. doi:10.1212/NXG.0000000000000223
- Breza, M., Hirst, J., Chelban, V., Banneau, G., Tissier, L., Kol, B., et al. (2021). Expanding the Spectrum of AP5Z1-Related Hereditary Spastic Paraplegia (HSP-SPG48): A Multicenter Study on a Rare Disease. *Mov. Disord.* 36, 1034–1038. doi:10.1002/mds.28487
- Browman, D. T., Resek, M. E., Zajchowski, L. D., and Robbins, S. M. (2006). Erlin-1 and Erlin-2 Are Novel Members of the Prohibitin Family of Proteins that Define Lipid-raft-like Domains of the ER. *J. Cell Sci.* 119, 3149–3160. doi:10.1242/jcs.03060
- Burguez, D., Polese-Bonatto, M., Scudero, L. A. J., Björkhem, I., Schöls, L., Jardim, L. B., et al. (2017). Clinical and Molecular Characterization of Hereditary Spastic Paraplegias: A Next-Generation Sequencing Panel Approach. *J. Neurol. Sci.* 383, 18–25. doi:10.1016/j.jns.2017.10.010
- Butler, R., Wood, J. D., Landers, J. A., and Cunliffe, V. T. (2010). Genetic and Chemical Modulation of Spastin-dependent Axon Outgrowth in Zebrafish Embryos Indicates a Role for Impaired Microtubule Dynamics in Hereditary Spastic Paraplegia. *Dis. Model. Mech.* 3, 743–751. doi:10.1242/dmm.004002
- Caballero Oteyza, A., Battalio lu, E., Ocek, L., Lindig, T., Reichbauer, J., Rebelo, A. P., et al. (2014). Motor Protein Mutations Cause a New Form of Hereditary Spastic Paraplegia. *Neurology* 82, 2007–2016. doi:10.1212/wnl.0000000000000479
- Calandra, C. R., Buda, G., Vishnopolska, S. A., Oliveri, J., Oliveri, F. A., Pérez Millán, M. I., et al. (2020). Spastic Ataxia with Eye-of-the-tiger-like Sign in 4 Siblings Due to Novel Compound Heterozygous AFG3L2 Mutation. *Parkinsonism Relat. Disord.* 73, 52–54. doi:10.1016/j.parkreldis.2020.03.020
- Cardozo-Hernández, A. L. d. C., Rezende, T. J. R., França, M. C., and França, M. C. (2020). Hereditary Spastic Paraplegia Type 11 (SPG11) Is Associated with Obesity and Hypothalamic Damage. *J. Neurol. Sci.* 416, 116982. doi:10.1016/j.jns.2020.116982
- Casari, G., De Fusco, M., Ciarmatori, S., Zeviani, M., Mora, M., Fernandez, P., et al. (1998). Spastic Paraplegia and OXPHOS Impairment Caused by Mutations in Paraplegin, a Nuclear-Encoded Mitochondrial Metalloprotease. *Cell* 93, 973–983. doi:10.1016/s0092-8674(00)81203-9
- Cassis, L., Cortès-Saladefont, E., Molero-Luis, M., Yubero, D., González, M. J., Ormazábal, A., et al. (2015). Review and Evaluation of the Methodological Quality of the Existing Guidelines and Recommendations for Inherited Neurometabolic Disorders. *Orphanet J. Rare Dis.* 10, 164. doi:10.1186/s13023-015-0376-9
- Chai, J.-H., Locke, D. P., Grealley, J. M., Knoll, J. H. M., Ohta, T., Dunai, J., et al. (2003). Identification of Four Highly Conserved Genes Between Breakpoint Hotspots BP1 and BP2 of the Prader-Willi/Angelman Syndromes Deletion Region that Have Undergone Evolutionary Transposition Mediated by Flanking Duplicons. *Am. J. Hum. Genet.* 73, 898–925. doi:10.1086/378816
- Chang, J., Lee, S., and Blackstone, C. (2014). Spastic Paraplegia Proteins Spastizin and Spatacsin Mediate Autophagic Lysosome Reformation. *J. Clin. Invest.* 124, 5249–5262. doi:10.1172/JCI177598
- Charron, F., and Tessier-Lavigne, M. (2007). The Hedgehog, TGF-Beta/BMP and Wnt Families of Morphogens in Axon Guidance. *Adv. Exp. Med. Biol.* 621, 116–133. doi:10.1007/978-0-387-76715-4_9
- Chestnut, B. A., Chang, Q., Price, A., Lesuisse, C., Wong, M., and Martin, L. J. (2011). Epigenetic Regulation of Motor Neuron Cell Death Through DNA Methylation. *J. Neurosci.* 31, 16619–16636. doi:10.1523/JNEUROSCI.1639-11.2011
- Chouliaras, L., Mastroeni, D., Delvaux, E., Grover, A., Kenis, G., Hof, P. R., et al. (2013). Consistent Decrease in Global DNA Methylation and Hydroxymethylation in the Hippocampus of Alzheimer's Disease Patients. *Neurobiol. Aging* 34, 2091–2099. doi:10.1016/j.neurobiolaging.2013.02.021
- Chrestian, N., Dupré, N., Gan-Or, Z., Szuto, A., Chen, S., Venkitachalam, A., et al. (2016). Clinical and Genetic Study of Hereditary Spastic Paraplegia in Canada. *Neurol. Genet.* 3, e122. doi:10.1212/NXG.0000000000000122
- Claes, S., Devriendt, K., Van Goethem, G., Roelen, L., Meirelire, J., Raeymaekers, P., et al. (2000). Novel Syndromic Form of X-Linked Complicated Spastic Paraplegia. *Am. J. Med. Genet.* 94, 1–4. doi:10.1002/1096-8628(20000904)94:1<1::aid-ajmg1>3.0.co;2-v
- Clarençon, F., Touzé, E., Leroy-Willig, A., Turmel, H., Naggara, O., Pavy, S., et al. (2006). Spastic Paraparesis as a Manifestation of Leber's Disease. *J. Neurol.* 253, 525–526. doi:10.1007/s00415-005-0994-6
- Coarelli, G., Schule, R., van de Warrenburg, B. P. C., de Jonghe, P., De Jonghe, C., Martinuzzi, A., et al. (2019). Loss of Paraplegin Drives Spasticity Rather Than Ataxia in a Cohort of 241 Patients with SPG7. *Neurology* 92, e2679–e2690. doi:10.1212/WNL.00000000000007606
- Corona, P., Lamantea, E., Greco, M., Carrara, F., Agostino, A., Guidetti, D., et al. (2002). Novel Heteroplasmic mtDNA Mutation in a Family with Heterogeneous Clinical Presentations. *Ann. Neurol.* 51, 118–122. doi:10.1002/ana.10059
- Coutelier, M., Goizet, C., Durr, A., Habarou, F., Morais, S., Dionne-Laporte, A., et al. (2015). Alteration of Ornithine Metabolism Leads to Dominant and Recessive Hereditary Spastic Paraplegia. *Brain* 138, 2191–2205. doi:10.1093/brain/awv143
- Coutelier, M., Mochel, F., Saudubray, J.-M., Ottolenghi, C., and Stevanin, G. (2016). Reply:ALDH18A1 gene Mutations Cause Dominant Spastic Paraplegia SPG9: Loss of Function Effect and Plausibility of a Dominant Negative Mechanism. *Brain* 139, e4. doi:10.1093/brain/awv248
- Crosby, A. H., and Proukakis, C. (2002). Is the Transportation Highway the Right Road for Hereditary Spastic Paraplegia? *Am. J. Hum. Genet.* 71, 1009–1016. doi:10.1086/344206
- Darios, F., Mochel, F., and Stevanin, G. (2020). Lipids in the Physiopathology of Hereditary Spastic Paraplegias. *Front. Neurosci.* 14. doi:10.3389/fnins.2020.00074
- Darios, F., and Stevanin, G. (2020). Impairment of Lysosome Function and Autophagy in Rare Neurodegenerative Diseases. *J. Mol. Biol.* 432, 2714–2734. doi:10.1016/j.jmb.2020.02.033
- Daud, S., Kakar, N., Goebel, I., Hashmi, A. S., Yaqub, T., Nürnberg, G., et al. (2016). Identification of Two Novel ALS2 Mutations in Infantile-Onset Ascending Hereditary Spastic Paraplegia. *Amyotroph. Lateral Scler. Frontotemporal Degeneration* 17, 260–265. doi:10.3109/21678421.2015.1125501

- de Souza, P. V. S., de Rezende Pinto, W. B. V., de Rezende Batistella, G. N., Bortholin, T., and Oliveira, A. S. B. (2017). Hereditary Spastic Paraplegia: Clinical and Genetic Hallmarks. *Cerebellum* 16, 525–551. doi:10.1007/s12311-016-0803-z
- Deluca, G. C., Ebers, G. C., and Esiri, M. M. (2004). The Extent of Axonal Loss in the Long Tracts in Hereditary Spastic Paraplegia. *Neuropathol. Appl. Neurobiol.* 30, 576–584. doi:10.1111/j.1365-2990.2004.00587.x
- Depienne, C., Fedirko, E., Forlani, S., Cazeneuve, C., Ribaï, P., Feki, I., et al. (2007). Exon Deletions of SPG4 Are a Frequent Cause of Hereditary Spastic Paraplegia. *J. Med. Genet.* 44, 281–284. doi:10.1136/jmg.2006.046425
- Desplats, P., Spencer, B., Coffee, E., Patel, P., Michael, S., Patrick, C., et al. (2011). α -Synuclein Sequesters Dnmt1 from the Nucleus. *J. Biol. Chem.* 286, 9031–9037. doi:10.1074/jbc.C110.212589
- Dick, K. J., Al-Mjeni, R., Baskir, W., Koul, R., Simpson, M. A., Patton, M. A., et al. (2008). A Novel Locus for an Autosomal Recessive Hereditary Spastic Paraplegia (SPG35) Maps to 16q21-Q23. *Neurology* 71, 248–252. doi:10.1212/01.wnl.0000319610.29522.8a
- Dick, K. J., Eckhardt, M., Paisán-Ruiz, C., Alshehhi, A. A., Proukakakis, C., Sibtain, N. A., et al. (2010). Mutation of FA2H Underlies a Complicated Form of Hereditary Spastic Paraplegia (SPG35). *Hum. Mutat.* 31, E1251–E1260. doi:10.1002/humu.21205
- Dong, E.-L., Wang, C., Wu, S., Lu, Y.-Q., Lin, X.-H., Su, H.-Z., et al. (2018). Clinical Spectrum and Genetic Landscape for Hereditary Spastic Paraplegias in China. *Mol. Neurodegeneration* 13, 36. doi:10.1186/s13024-018-0269-1
- Dor, T., Cinnamon, Y., Raymond, L., Shaag, A., Bouslam, N., Bouhouche, A., et al. (2014). KIF1C mutations in Two Families with Hereditary Spastic Paraparesis and Cerebellar Dysfunction. *J. Med. Genet.* 51, 137–142. doi:10.1136/jmedgenet-2013-102012
- Du, J. (2021). Hereditary Spastic Paraplegia Type 11: Clinicogenetic Lessons from 339 Patients. *J. Clin. Neurosci.* 85, 67–71. doi:10.1016/j.jocn.2020.11.036
- Dumitrescu, A. M., Liao, X.-H., Best, T. B., Brockmann, K., and Refetoff, S. (2004). A Novel Syndrome Combining Thyroid and Neurological Abnormalities Is Associated with Mutations in a Monocarboxylate Transporter Gene. *Am. J. Hum. Genet.* 74, 168–175. doi:10.1086/380999
- Dursun, U., Koroglu, C., Kocasoy Orhan, E., Ugur, S. A., and Tolun, A. (2009). Autosomal Recessive Spastic Paraplegia (SPG45) with Mental Retardation Maps to 10q24.3-q25.1. *Neurogenetics* 10, 325–331. doi:10.1007/s10048-009-0191-3
- Edvardson, S., Hama, H., Shaag, A., Gomori, J. M., Berger, I., Soffer, D., et al. (2008). Mutations in the Fatty Acid 2-hydroxylase Gene Are Associated with Leukodystrophy with Spastic Paraparesis and Dystonia. *Am. J. Hum. Genet.* 83, 643–648. doi:10.1016/j.ajhg.2008.10.010
- Elert-Dobkowska, E., Stepniak, I., Krysa, W., Ziora-Jakutowicz, K., Rakowicz, M., Sobanska, A., et al. (2019). Next-generation Sequencing Study Reveals the Broader Variant Spectrum of Hereditary Spastic Paraplegia and Related Phenotypes. *Neurogenetics* 20, 27–38. doi:10.1007/s10048-019-00565-6
- Elsayed, L. E. O., Ahmed, A. E. M., and Stevanin, G. (2019a). “Neurogenetic Disorders in Africa: Hereditary Spastic Paraplegia: A Case Study,” in *The Genetics of African Populations in Health and Disease Cambridge Studies in Biological and Evolutionary Anthropology*. Editors C. N. Rotimi and M. E. Ibrahim (Cambridge, UK: Cambridge University Press), 311–319. doi:10.1017/9781139680295.013
- Elsayed, L. E. O., Drouet, V., Usenko, T., Mohammed, I. N., Hamed, A. A. A., Elseed, M. A., et al. (2016a). A Novel Nonsense Mutation in DNAJC 6 Expands the Phenotype of Autosomal-Recessive Juvenile-Onset Parkinson’s Disease. *Ann. Neurol.* 79, 335–337. doi:10.1002/ana.24591
- Elsayed, L. E. O., Eltazi, I. Z. M., Ahmed, A. E. M., and Stevanin, G. (2019b). Hereditary Spastic Paraplegias: Time for an Objective Case Definition and a New Nosology for Neurogenetic Disorders to Facilitate Biomarker/therapeutic Studies. *Expert Rev. Neurotherapeutics* 19, 409–415. doi:10.1080/14737175.2019.1608824
- Elsayed, L. E. O., Mohammed, I. N., Hamed, A. A. A., Elseed, M. A., Johnson, A., Mairey, M., et al. (2016b). Hereditary Spastic Paraplegias: Identification of a Novel SPG57 Variant Affecting TFG Oligomerization and Description of HSP Subtypes in Sudan. *Eur. J. Hum. Genet.* 25, 100–110. doi:10.1038/ejhg.2016.108
- Elsayed, L. E. O., Mohammed, I. N., Hamed, A. A. A., Elseed, M. A., Salih, M. A. M., Yahia, A., et al. (2018). Case Report of a Novel Homozygous Splice Site Mutation in PLA2G6 Gene Causing Infantile Neuroaxonal Dystrophy in a Sudanese Family. *BMC Med. Genet.* 19, 72. doi:10.1186/s12881-018-0592-y
- Erfanian Omidvar, M., Torkamandi, S., Rezaei, S., Alipoor, B., Omrani, M. D., Darvish, H., et al. (2019). Genotype-phenotype Associations in Hereditary Spastic Paraplegia: A Systematic Review and Meta-Analysis on 13,570 Patients. *J. Neurol.* 2682065–2682082. doi:10.1007/s00415-019-09633-1
- Erichsen, A. K., Inderhaug, E., Mattingsdal, M., Eiklid, K., and Tallaksen, C. M. E. (2007). Seven Novel Mutations and Four Exon Deletions in a Collection of Norwegian Patients with SPG4 Hereditary Spastic Paraplegia. *Eur. J. Neurol.* 14, 809–814. doi:10.1111/j.1468-1331.2007.01861.x
- Erlich, Y., Edvardson, S., Hodges, E., Zenvirt, S., Thekkat, P., Shaag, A., et al. (2011). Exome Sequencing and Disease-Network Analysis of a Single Family Implicate a Mutation in KIF1A in Hereditary Spastic Paraparesis. *Genome Res.* 21, 658–664. doi:10.1101/gr.117143.110
- Errico, A., Ballabio, A., and Rugarli, E. I. (2002). Spastin, the Protein Mutated in Autosomal Dominant Hereditary Spastic Paraplegia, Is Involved in Microtubule Dynamics. *Hum. Mol. Genet.* 11, 153–163. doi:10.1093/hmg/11.2.153
- Esteves, T., Durr, A., Mundwiller, E., Loureiro, J. L., Boutry, M., Gonzalez, M. A., et al. (2014). Loss of Association of REEP2 with Membranes Leads to Hereditary Spastic Paraplegia. *Am. J. Hum. Genet.* 94, 268–277. doi:10.1016/j.ajhg.2013.12.005
- Eymard-Pierre, E., Lesca, G., Dollet, S., Santorelli, F. M., di Capua, M., Bertini, E., et al. (2002). Infantile-onset Ascending Hereditary Spastic Paralysis Is Associated with Mutations in the Alsin Gene. *Am. J. Hum. Genet.* 71, 518–527. doi:10.1086/342359
- Farazi Fard, M. A., Rebelo, A. P., Buglo, E., Nemati, H., Dastsooz, H., Gehweiler, I., et al. (2019). Truncating Mutations in UBAP1 Cause Hereditary Spastic Paraplegia. *Am. J. Hum. Genet.* 104, 767–773. doi:10.1016/j.ajhg.2019.03.001
- Fassier, C., Hutt, J. A., Scholpp, S., Lumsden, A., Giros, B., Nothias, F., et al. (2010). Zebrafish Atlastin Controls Motility and Spinal Motor Axon Architecture via Inhibition of the BMP Pathway. *Nat. Neurosci.* 13, 1380–1387. doi:10.1038/nn.2662
- Ferreirinha, F., Quattrini, A., Pirozzi, M., Valsecchi, V., Dina, G., Broccoli, V., et al. (2004). Axonal Degeneration in Paraplegin-Deficient Mice Is Associated with Abnormal Mitochondria and Impairment of Axonal Transport. *J. Clin. Invest.* 113, 231–242. doi:10.1172/JCI2013810.1172/jci200420138
- Fink, J. (2014). Hereditary Spastic Paraplegia: Clinical Principles and Genetic Advances. *Semin. Neurol.* 34, 293–305. doi:10.1055/s-0034-1386767
- Fink, J. K. (1993). “Hereditary Spastic Paraplegia Overview,” in *GeneReviews®*. Editors R. A. Pagon, M. P. Adam, H. H. Ardinger, S. E. Wallace, A. Amemiya, and L. J. Bean (Seattle, WA: University of Washington). Available at: <http://www.ncbi.nlm.nih.gov/books/NBK1509/> (Accessed February 22, 2016).
- Finsterer, J., Löscher, W., Quasthoff, S., Wanschitz, J., Auer-Grumbach, M., and Stevanin, G. (2012). Hereditary Spastic Paraplegias with Autosomal Dominant, Recessive, X-Linked, or Maternal Trait of Inheritance. *J. Neurol. Sci.* 318, 1–18. doi:10.1016/j.jns.2012.03.025
- Fusco, C., Frattini, D., Farnetti, E., Nicoli, D., Casali, B., and Giustina, E. D. (2012). Very Early Onset and Severe Complicated Phenotype Caused by a New Spastic Paraplegia 3A Gene Mutation. *J. Child. Neurol.* 27, 1348–1350. doi:10.1177/0883073811435245
- Gan-Or, Z., Bouslam, N., Birouk, N., Lissouba, A., Chambers, D. B., Vérièpe, J., et al. (2016). Mutations in CAPN1 Cause Autosomal-Recessive Hereditary Spastic Paraplegia. *Am. J. Hum. Genet.* 98, 1038–1046. doi:10.1016/j.ajhg.2016.04.002
- Goizet, C., Depienne, C., Benard, G., Boukhris, A., Mundwiller, E., Solé, G., et al. (2011). REEP1 Mutations in SPG31: Frequency, Mutational Spectrum, and Potential Association with Mitochondrial Morpho-Functional Dysfunction. *Hum. Mutat.* 32, 1118–1127. doi:10.1002/humu.21542
- Goodnight, A. V., Kremesky, I., Khampang, S., Jung, Y. H., Billingsley, J. M., Bosinger, S. E., et al. (2019). Chromatin Accessibility and Transcription Dynamics during In Vitro Astrocyte Differentiation of Huntington’s Disease Monkey Pluripotent Stem Cells. *Epigenetics & Chromatin* 12, 67. doi:10.1186/s13072-019-0313-6
- Haertle, L., Müller, T., Lardenoije, R., Maierhofer, A., Dittrich, M., Riemens, R. J. M., et al. (2019). Methylomic Profiling in Trisomy 21 Identifies Cognition- and Alzheimer’s Disease-Related Dysregulation. *Clin. Epigenet* 11, 195. doi:10.1186/s13148-019-0787-x

- Halevy, A., Lerer, I., Cohen, R., Kornreich, L., Shuper, A., Gamliel, M., et al. (2014). Novel EXOSC3 Mutation Causes Complicated Hereditary Spastic Paraplegia. *J. Neurol.* 261, 2165–2169. doi:10.1007/s00415-014-7457-x
- Hanein, S., Dürr, A., Ribai, P., Forlani, S., Leutenegger, A.-L., Nelson, I., et al. (2007). A Novel Locus for Autosomal Dominant "uncomplicated" Hereditary Spastic Paraplegia Maps to Chromosome 8p21.1-q13.3. *Hum. Genet.* 122, 261–273. doi:10.1007/s00439-007-0396-1
- Hanein, S., Martin, E., Boukhris, A., Byrne, P., Goizet, C., Hamri, A., et al. (2008). Identification of the SPG15 Gene, Encoding Spastizin, as a Frequent Cause of Complicated Autosomal-Recessive Spastic Paraplegia, Including Kjellin Syndrome. *Am. J. Hum. Genet.* 82, 992–1002. doi:10.1016/j.ajhg.2008.03.004
- Hansen, J. J., Dürr, A., Cournu-Rebeix, I., Georgopoulos, C., Ang, D., Nielsen, M. N., et al. (2002). Hereditary Spastic Paraplegia SPG13 Is Associated with a Mutation in the Gene Encoding the Mitochondrial Chaperonin Hsp60. *Am. J. Hum. Genet.* 70, 1328–1332. doi:10.1086/339935
- Harbour, M. E., Breusegem, S. Y., and Seaman, M. N. J. (2012). Recruitment of the Endosomal WASH Complex Is Mediated by the Extended 'tail' of Fam21 Binding to the Retromer Protein Vps35. *Biochem. J.* 442, 209–220. doi:10.1042/BJ20111761
- Hardies, K., May, P., Djémié, T., Tarta-Arsene, O., Deconinck, T., Craiu, D., et al. (2015). Recessive Loss-Of-Function Mutations in AP4S1 Cause Mild Fever-Sensitive Seizures, Developmental Delay and Spastic Paraplegia through Loss of AP-4 Complex Assembly. *Hum. Mol. Genet.* 24, 2218–2227. doi:10.1093/hmg/ddu740
- Harding, A. E. (1983). Classification of the Hereditary Ataxias and Paraplegias. *The Lancet* 321, 1151–1155. doi:10.1016/s0140-6736(83)92879-9
- Hauser, S., Poenisch, M., Schelling, Y., Höflinger, P., Schuster, S., Teegler, A., et al. (2019). mRNA as a Novel Treatment Strategy for Hereditary Spastic Paraplegia Type 5. *Mol. Ther. - Methods Clin. Development* 15, 359–370. doi:10.1016/j.omtm.2019.10.011
- Havlicek, S., Kohl, Z., Mishra, H. K., Prots, I., Eberhardt, E., Denguir, N., et al. (2014). Gene Dosage-dependent Rescue of HSP Neurite Defects in SPG4 Patients' Neurons. *Hum. Mol. Genet.* 23, 2527–2541. doi:10.1093/hmg/ddt644
- Hazan, J., Fonknechten, N., Mavel, D., Paternotte, C., Samson, D., Artiguenave, F., et al. (1999). Spastin, a New AAA Protein, Is Altered in the Most Frequent Form of Autosomal Dominant Spastic Paraplegia. *Nat. Genet.* 23, 296–303. doi:10.1038/15472
- Hedera, P. (1993). "Spastic Paraplegia 3A," in *GeneReviews*®. Editors R. A. Pagon, M. P. Adam, H. H. Ardinger, T. D. Bird, C. R. Dolan, and C.-T. Fong (Seattle, WA: University of Washington). Available at: <http://www.ncbi.nlm.nih.gov/books/NBK45978/> (Accessed March 8, 2015).
- Hegarty, S. V., O'Keefe, G. W., and Sullivan, A. M. (2013). BMP-smad 1/5/8 Signalling in the Development of the Nervous System. *Prog. Neurobiol.* 109, 28–41. doi:10.1016/j.pneurobio.2013.07.002
- Helal, M., Mazaheri, N., Shalabaf, B., Malamiri, R. A., Dilaver, N., Buchert, R., et al. (2018). Clinical Presentation and Natural History of Infantile-Onset Ascending Spastic Paralysis from Three Families with an ALS2 Founder Variant. *Neurol. Sci.* 39, 1917–1925. doi:10.1007/s10072-018-3526-8
- Hirst, J., Edgar, J. R., Esteves, T., Darios, F., Madeo, M., Chang, J., et al. (2015). Loss of AP-5 Results in Accumulation of Aberrant Endolysosomes: Defining a New Type of Lysosomal Storage Disease. *Hum. Mol. Genet.* 24, 4984–4996. doi:10.1093/hmg/ddv220
- Hirst, J., Irving, C., and Borner, G. H. H. (2013). Adaptor Protein Complexes AP-4 and AP-5: New Players in Endosomal Trafficking and Progressive Spastic Paraplegia. *Traffic* 14, 153–164. doi:10.1111/tra.12028
- Hirst, J., Itzhak, D. N., Antrobus, R., Borner, G. H. H., and Robinson, M. S. (2018). Role of the AP-5 Adaptor Protein Complex in Late Endosome-To-Golgi Retrieval. *Plos Biol.* 16, e2004411. doi:10.1371/journal.pbio.2004411
- Hodgkinson, C. A., Bohlega, S., Abu-Amero, S. N., Cupler, E., Kambouris, M., Meyer, B. F., et al. (2002). A Novel Form of Autosomal Recessive Pure Hereditary Spastic Paraplegia Maps to Chromosome 13q14. *Neurology* 59, 1905–1909. doi:10.1212/01.wnl.0000036909.49629.21
- Hollstein, R., Parry, D. A., Nalbach, L., Logan, C. V., Strom, T. M., Hartill, V. L., et al. (2015). HACE1 deficiency Causes an Autosomal Recessive Neurodevelopmental Syndrome. *J. Med. Genet.* 52, 797–803. doi:10.1136/jmedgenet-2015-103344
- Hu, J., Shibata, Y., Zhu, P.-P., Voss, C., Rismanchi, N., Prinz, W. A., et al. (2009). A Class of Dynamin-like GTPases Involved in the Generation of the Tubular ER Network. *Cell* 138, 549–561. doi:10.1016/j.cell.2009.05.025
- Huber, M. D., Vesely, P. W., Datta, K., and Gerace, L. (2013). Erlins Restrict SREBP Activation in the ER and Regulate Cellular Cholesterol Homeostasis. *J. Cell Biol.* 203, 427–436. doi:10.1083/jcb.201305076
- Hughes, C. A., Byrne, P. C., Webb, S., McMonagle, P., Patterson, V., Hutchinson, M., et al. (2001). SPG15, A New Locus for Autosomal Recessive Complicated HSP on Chromosome 14q. *Neurology* 56, 1230–1233. doi:10.1212/wnl.56.9.1230
- Husain, R. A., Grimm, M., Wagner, M., Hennings, J. C., Marx, C., Feichtinger, R. G., et al. (2020). Bi-allelic HPDL Variants Cause a Neurodegenerative Disease Ranging from Neonatal Encephalopathy to Adolescent-Onset Spastic Paraplegia. *Am. J. Hum. Genet.* 107, 364–373. doi:10.1016/j.ajhg.2020.06.015
- İlgaz Aydinlar, E., Rolfs, A., Serteser, M., and Parman, Y. (2014). Mutation in FAM134B Causing Hereditary Sensory Neuropathy with Spasticity in a Turkish Family. *Muscle Nerve* 49, 774–775. doi:10.1002/mus.24145
- Inoue, H., Baba, T., Sato, S., Ohtsuki, R., Takemori, A., Watanabe, T., et al. (2012). Roles of SAM and DDHD Domains in Mammalian Intracellular Phospholipase A1 KIAA0725p. *Biochim. Biophys. Acta (Bba) - Mol. Cell Res.* 1823, 930–939. doi:10.1016/j.bbamcr.2012.02.002
- Jacinto-Scudeiro, L. A., Dariva Machado, G., Ayres, A., Burguêz, D., Polese-Bonato, M., González-Salazar, C., et al. (2019). Are Cognitive Changes in Hereditary Spastic Paraplegias Restricted to Complicated Forms? *Front. Neurol.* 10, 508. doi:10.3389/fneur.2019.00508
- Jeong, B., Kim, T. H., Kim, D.-S., Shin, W.-H., Lee, J.-R., Kim, N.-S., et al. (2019). Spastin Contributes to Neural Development through the Regulation of Microtubule Dynamics in the Primary Cilia of Neural Stem Cells. *Neuroscience* 411, 76–85. doi:10.1016/j.neuroscience.2019.05.024
- Jia, T., Chu, C., Liu, Y., van Dongen, J., Papastergios, E., Armstrong, N. J., et al. (2019). Epigenome-wide Meta-Analysis of Blood DNA Methylation and its Association with Subcortical Volumes: Findings from the ENIGMA Epigenetics Working Group. *Mol. Psychiatry*. doi:10.1038/s41380-019-0605-z
- Jouet, M., Rosenthal, A., Armstrong, G., MacFarlane, J., Stevenson, R., Paterson, J., et al. (1994). X-linked Spastic Paraplegia (SPG1), MASA Syndrome and X-Linked Hydrocephalus Result from Mutations in the LI Gene. *Nat. Genet.* 7, 402–407. doi:10.1038/ng0794-402
- Julien, C., Lissouba, A., Madabattula, S., Fardghassemi, Y., Rosenfelt, C., Androschuk, A., et al. (2016). Conserved Pharmacological Rescue of Hereditary Spastic Paraplegia-Related Phenotypes Across Model Organisms. *Hum. Mol. Genet.* 25, 1088–1099. doi:10.1093/hmg/ddv632
- Kaji, S., Kawarai, T., Miyamoto, R., Nodera, H., Pedace, L., Orlacchio, A., et al. (2016). Late-onset Spastic Paraplegia Type 10 (SPG10) Family Presenting with Bulbar Symptoms and Fasciculations Mimicking Amyotrophic Lateral Sclerosis. *J. Neurol. Sci.* 364, 45–49. doi:10.1016/j.jns.2016.03.001
- Kara, E., Tucci, A., Manzoni, C., Lynch, D. S., Elpidorou, M., Bettencourt, C., et al. (2016). Genetic and Phenotypic Characterization of Complex Hereditary Spastic Paraplegia. *Brain* 139, 1904–1918. doi:10.1093/brain/aww111
- Kevenaar, J. T., and Hoogenraad, C. C. (2015). The Axonal Cytoskeleton: From Organization to Function. *Front. Mol. Neurosci.* 8. doi:10.3389/fnmol.2015.00044
- Klebe, S. (2006). Autosomal Recessive Spastic Paraplegia (SPG30) with Mild Ataxia and Sensory Neuropathy Maps to Chromosome 2q37.3. *Brain* 129, 1456–1462. doi:10.1093/brain/awl012
- Klebe, S., Depienne, C., Gerber, S., Challe, G., Anheim, M., Charles, P., et al. (2012a). Spastic Paraplegia Gene 7 in Patients with Spasticity And/or Optic Neuropathy. *Brain J. Neurol.* 135, 2980–2993. doi:10.1093/brain/aww240
- Klebe, S., Lossos, A., Azzedine, H., Mundwiller, E., Sheffer, R., Gaussen, M., et al. (2012b). KIF1A Missense Mutations in SPG30, an Autosomal Recessive Spastic Paraplegia: Distinct Phenotypes According to the Nature of the Mutations. *Eur. J. Hum. Genet.* 20, 645–649. doi:10.1038/ejhg.2011.261
- Klebe, S., Stevanin, G., and Depienne, C. (2015). Clinical and Genetic Heterogeneity in Hereditary Spastic Paraplegias: From SPG1 to SPG72 and Still Counting. *Revue Neurologique* 171, 505–530. doi:10.1016/j.neuro.2015.02.017
- Koh, K., Ishiura, H., Ishiura, H., Beppu, M., Shimazaki, H., Ichinose, Y., et al. (2018). Novel Mutations in the ALDH18A1 Gene in Complicated Hereditary

- Spastic Paraplegia with Cerebellar Ataxia and Cognitive Impairment. *J. Hum. Genet.* 63, 1009–1013. doi:10.1038/s10038-018-0477-0
- Kousi, M., and Katsanis, N. (2015). Genetic Modifiers and Oligogenic Inheritance. *Cold Spring Harbor Perspect. Med.* 5, a017145. doi:10.1101/cshperspect.a017145
- Landouré, G., Zhu, P.-P., Lourenço, C. M., Johnson, J. O., Toro, C., Bricceno, K. V., et al. (2013). Hereditary Spastic Paraplegia Type 43 (SPG43) Is Caused by Mutation in C19orf12. *Hum. Mutat.* 34, 1357–1360. doi:10.1002/humu.22378
- Lardenoije, R., Roubroeks, J. A. Y., Pishva, E., Leber, M., Wagner, H., Iatrou, A., et al. (2019). Alzheimer's Disease-Associated (Hydroxy)methylomic Changes in the Brain and Blood. *Clin. Epigenet* 11, 164. doi:10.1186/s13148-019-0755-5
- Lavie, J., Serrat, R., Bellance, N., Courtand, G., Dupuy, J.-W., Tesson, C., et al. (2017). Mitochondrial Morphology and Cellular Distribution Are Altered in SPG31 Patients and Are Linked to DRP1 Hyperphosphorylation. *Hum. Mol. Genet.* 26, 674–685. doi:10.1093/hmg/ddw425
- Lee, J. Y. W., Hsu, C.-K., Michael, M., Nanda, A., Liu, L., McMillan, J. R., et al. (2017). Large Intragenic Deletion in DSTYK Underlies Autosomal-Recessive Complicated Spastic Paraparesis, SPG23. *Am. J. Hum. Genet.* 100, 364–370. doi:10.1016/j.ajhg.2017.01.014
- Lin, P., Li, J., Liu, Q., Mao, F., Li, J., Qiu, R., et al. (2008). A Missense Mutation in SL33A1, Which Encodes the Acetyl-CoA Transporter, Causes Autosomal-Dominant Spastic Paraplegia (SPG42). *Am. J. Hum. Genet.* 83, 752–759. doi:10.1016/j.ajhg.2008.11.003
- Lindsey, J. C., Lusher, M. E., McDermott, C. J., White, K. D., Reid, E., Rubinsztein, D. C., et al. (2000). Mutation Analysis of the Spastin Gene (SPG4) in Patients with Hereditary Spastic Paraparesis. *J. Med. Genet.* 37, 759–765. doi:10.1136/jmg.37.10.759
- Lo Giudice, T., Lombardi, F., Santorelli, F. M., Kawarai, T., and Orlandaccio, A. (2014). Hereditary Spastic Paraplegia: Clinical-Genetic Characteristics and Evolving Molecular Mechanisms. *Exp. Neurol.* 261, 518–539. doi:10.1016/j.expneurol.2014.06.011
- Lossos, A., Stümpfig, C., Stevanin, G., Gaussen, M., Zimmerman, B.-E., Mundwiller, E., et al. (2015). Fe/S Protein Assembly Gene IBA57 Mutation Causes Hereditary Spastic Paraplegia. *Neurology* 84, 659–667. doi:10.1212/WNL.0000000000001270
- Lynch, D. S., Koutsis, G., Tucci, A., Panas, M., Baklou, M., Breza, M., et al. (2015). Hereditary Spastic Paraplegia in Greece: Characterisation of a Previously Unexplored Population Using Next-Generation Sequencing. *Eur. J. Hum. Genet.* 24, 857–863. doi:10.1038/ejhg.2015.200
- Lynex, C. N., Carr, I. M., Leek, J. P., Achuthan, R., Mitchell, S., Maher, E. R., et al. (2004). Homozygosity for a Missense Mutation in the 67 kDa Isoform of Glutamate Decarboxylase in a Family with Autosomal Recessive Spastic Cerebral Palsy: Parallels with Stiff-Person Syndrome and Other Movement Disorders. *BMC Neurol.* 4, 20. doi:10.1186/1471-2377-4-20
- Macedo-Souza, L. I., Kok, F., Santos, S., Amorim, S. C., Starling, A., Nishimura, A., et al. (2005). Spastic Paraplegia, Optic Atrophy, and Neuropathy Is Linked to Chromosome 11q13. *Ann. Neurol.* 57, 730–737. doi:10.1002/ana.20478
- Macedo-Souza, L. I., Kok, F., Santos, S., Licinio, L., Lezirovitz, K., Cavaçana, N., et al. (2009). Spastic Paraplegia, Optic Atrophy, and Neuropathy: New Observations, Locus Refinement, and Exclusion of Candidate Genes. *Ann. Hum. Genet.* 73, 382–387. doi:10.1111/j.1469-1809.2009.00507.x
- Macedo-Souza, L. I., Kok, F., Santos, S., Licinio, L., Lezirovitz, K., Nascimento, R. M. P., et al. (2008). Reevaluation of a Large Family Defines a New Locus for X-Linked Recessive Pure Spastic Paraplegia (SPG34) on Chromosome Xq25. *Neurogenetics* 9, 225–226. doi:10.1007/s10048-008-0130-8
- Maier, A., Klopocki, E., Horn, D., Tzschach, A., Holm, T., Meyer, R., et al. (2014). De Novo Partial Deletion in GRID2 Presenting with Complicated Spastic Paraplegia. *Muscle Nerve* 49, 289–292. doi:10.1002/mus.24096
- Mannan, A. U., Krawen, P., Sauter, S. M., Boehm, J., Chronowska, A., Paulus, W., et al. (2006). ZFYVE27 (SPG33), A Novel Spastin-Binding Protein, Is Mutated in Hereditary Spastic Paraplegia. *Am. J. Hum. Genet.* 79, 351–357. doi:10.1086/504927
- Marelli, C., Lamari, F., Rainteau, D., Lafourcade, A., Banneau, G., Humbert, L., et al. (2018). Plasma Oxysterols: Biomarkers for Diagnosis and Treatment in Spastic Paraplegia Type 5. *Brain J. Neurol.* 141, 72–84. doi:10.1093/brain/awx297
- Martin, E., Schüle, R., Smets, K., Rastetter, A., Boukhris, A., Loureiro, J. L., et al. (2013). Loss of Function of Glucocerebrosidase GBA2 Is Responsible for Motor Neuron Defects in Hereditary Spastic Paraplegia. *Am. J. Hum. Genet.* 92, 238–244. doi:10.1016/j.ajhg.2012.11.021
- McCaughy, J., Miller, V. J., Stevenson, N. L., Brown, A. K., Budnik, A., Heesom, K. J., et al. (2016). TFG Promotes Organization of Transitional ER and Efficient Collagen Secretion. *Cel Rep.* 15, 1648–1659. doi:10.1016/j.celrep.2016.04.062
- Meijer, I. A., Cossette, P., Roussel, J., Benard, M., Toupin, S., and Rouleau, G. A. (2004). A Novel Locus for Pure Recessive Hereditary Spastic Paraplegia Maps to 10q22.1-10q24.1. *Ann. Neurol.* 56, 579–582. doi:10.1002/ana.20239
- Meilleur, K. G., Traoré, M., Sangaré, M., Britton, A., Landouré, G., Coulibaly, S., et al. (2010). Hereditary Spastic Paraplegia and Amyotrophy Associated with a Novel Locus on Chromosome 19. *Neurogenetics* 11, 313–318. doi:10.1007/s10048-009-0230-0
- Melo, U. S., Macedo-Souza, L. I., Figueiredo, T., Muotri, A. R., Gleeson, J. G., Coux, G., et al. (2015). Overexpression of KLC2 due to a Homozygous Deletion in the Non-coding Region Causes SPOAN Syndrome. *Hum. Mol. Genet.* 24, ddv388–6885. doi:10.1093/hmg/ddv388
- Méreaux, J.-L., Banneau, G., Papin, M., Coareli, G., Valter, R., Raymond, L., et al. (Forthcoming 2021b). Clinical and Genetic Spectra of 1550 index Patients with Hereditary Spastic Paraplegia. *BRAIN*.
- Méreaux, J.-L., Firanescu, C., Coarelli, G., Kvarnung, M., Rodrigues, R., Pegoraro, E., et al. (2021a). Increasing Involvement of CAPN1 Variants in Spastic Ataxias and Phenotype-Genotype Correlations. *Neurogenetics* 22, 71–79. doi:10.1007/s10048-020-00633-2
- Montenegro, G., Rebelo, A. P., Connell, J., Allison, R., Babalini, C., D'Aloia, M., et al. (2012). Mutations in the ER-Shaping Protein Reticulon 2 Cause the Axon-Degenerative Disorder Hereditary Spastic Paraplegia Type 12. *J. Clin. Invest.* 122, 538–544. doi:10.1172/JCI60560
- Morais, S., Raymond, L., Mairey, M., Coutinho, P., Brandão, E., Ribeiro, P., et al. (2017). Massive Sequencing of 70 Genes Reveals a Myriad of Missing Genes or Mechanisms to Be Uncovered in Hereditary Spastic Paraplegias. *Eur. J. Hum. Genet.* 25, 1217–1228. doi:10.1038/ejhg.2017.124
- Moreno-De-Luca, A., Helmers, S. L., Mao, H., Burns, T. G., Melton, A. M. A., Schmidt, K. R., et al. (2011). Adaptor Protein Complex-4 (AP-4) Deficiency Causes a Novel Autosomal Recessive Cerebral Palsy Syndrome with Microcephaly and Intellectual Disability. *J. Med. Genet.* 48, 141–144. doi:10.1136/jmg.2010.082263
- Mori, F., Tanji, K., Miki, Y., Toyoshima, Y., Yoshida, M., Kakita, A., et al. (2016). G Protein-Coupled Receptor 26 Immunoreactivity in Intracellular Inclusions Associated with Polyglutamine and Intracellular Inclusion Body Diseases. *Neuropathology* 36, 50–55. doi:10.1111/neup.12237
- Nahm, M., Lee, M.-J., Parkinson, W., Lee, M., Kim, H., Kim, Y.-J., et al. (2013). Spartin Regulates Synaptic Growth and Neuronal Survival by Inhibiting BMP-Mediated Microtubule Stabilization. *Neuron* 77, 680–695. doi:10.1016/j.neuron.2012.12.015
- Namekawa, M., Muriel, M.-P., Janer, A., Latouche, M., Dauphin, A., Debeir, T., et al. (2007). Mutations in the SPG3A Gene Encoding the GTPase Atlastin Interfere with Vesicle Trafficking in the ER/Golgi Interface and Golgi Morphogenesis. *Mol. Cell Neurosci.* 35, 1–13. doi:10.1016/j.mcn.2007.01.012
- Newton, T., Allison, R., Edgar, J. R., Lumb, J. H., Rodger, C. E., Manna, P. T., et al. (2018). Mechanistic Basis of an Epistatic Interaction Reducing Age at Onset in Hereditary Spastic Paraplegia. *Brain J. Neurol.* 141, 1286–1299. doi:10.1093/brain/awy034
- Nolden, M., Ehse, S., Koppen, M., Bernacchia, A., Rugarli, E. I., and Langer, T. (2005). The M-AAA Protease Defective in Hereditary Spastic Paraplegia Controls Ribosome Assembly in Mitochondria. *Cell* 123, 277–289. doi:10.1016/j.cell.2005.08.003
- Noreau, A., Dion, P. A., and Rouleau, G. A. (2014). Molecular Aspects of Hereditary Spastic Paraplegia. *Exp. Cel Res.* 325, 18–26. doi:10.1016/j.yexcr.2014.02.021
- Novarino, G., Fenstermaker, A. G., Zaki, M. S., Hofree, M., Silhavy, J. L., Heiberg, A. D., et al. (2014). Exome Sequencing Links Corticospinal Motor Neuron Disease to Common Neurodegenerative Disorders. *Science* 343, 506–511. doi:10.1126/science.1247363
- Oates, E. C., Rossor, A. M., Hafezparast, M., Gonzalez, M., Spezziani, F., MacArthur, D. G., et al. (2013). Mutations in BICD2 Cause Dominant Congenital Spinal Muscular Atrophy and Hereditary Spastic Paraplegia. *Am. J. Hum. Genet.* 92, 965–973. doi:10.1016/j.ajhg.2013.04.018

- Orlacchio, A., Kawarai, T., Gaudiello, F., St George-Hyslop, P. H., Floris, R., and Bernardi, G. (2005a). New Locus for Hereditary Spastic Paraplegia Maps to Chromosome 1p31.1-1p21.1. *Ann. Neurol.* 58, 423–429. doi:10.1002/ana.20590
- Orlacchio, A., Kawarai, T., Gaudiello, F., Totaro, A., Schillaci, O., Stefani, A., et al. (2005b). Clinical and Genetic Study of a largeSPG4 Italian Family. *Mov Disord.* 20, 1055–1059. doi:10.1002/mds.20494
- Orlacchio, A., Patrono, C., Gaudiello, F., Rocchi, C., Moschella, V., Floris, R., et al. (2008). Silver Syndrome Variant of Hereditary Spastic Paraplegia: A Locus to 4p and Allelism with SPG4. *Neurology* 70, 1959–1966. doi:10.1212/01.wnl.0000294330.27058.61
- Orso, G., Martinuzzi, A., Rossetto, M. G., Sartori, E., Feany, M., and Daga, A. (2005). Disease-related Phenotypes in a Drosophila Model of Hereditary Spastic Paraplegia Are Ameliorated by Treatment with Vinblastine. *J. Clin. Invest.* 115, 3026–3034. doi:10.1172/JCI24694
- Orso, G., Pendin, D., Liu, S., Toso, J., Moss, T. J., Faust, J. E., et al. (2009). Homotypic Fusion of ER Membranes Requires the Dynamin-like GTPase Atlantin. *Nature* 460, 978–983. doi:10.1038/nature08280
- Orthmann-Murphy, J. L., Salsano, E., Abrams, C. K., Bizzi, A., Uziel, G., Freidin, M. M., et al. (2008). Hereditary Spastic Paraplegia Is a Novel Phenotype for GJA12/GJC2 Mutations. *Brain* 132, 426–438. doi:10.1093/brain/awn328
- Oz-Levi, D., Ben-Zeev, B., Ruzzo, E. K., Hitomi, Y., Gelman, A., Pelak, K., et al. (2012). Mutation in TECPR2 Reveals a Role for Autophagy in Hereditary Spastic Paraparesis. *Am. J. Hum. Genet.* 91, 1065–1072. doi:10.1016/j.ajhg.2012.09.015
- Oz-Levi, D., Gelman, A., Elazar, Z., and Lancet, D. (2013). Tecpr2. *Autophagy* 9, 801–802. doi:10.4161/auto.23961
- Pantakani, D., Zechner, U., Arygriou, L., Pauli, S., Sauter, S., and Mannan, A. (2008). Compound Heterozygosity in the SPG4 Gene Causes Hereditary Spastic Paraplegia. *Clin. Genet.* 73, 268–272. doi:10.1111/j.1399-0004.2007.00953.x
- Papadopoulos, C., Orso, G., Mancuso, G., Herholz, M., Gumeni, S., Tadepalle, N., et al. (2015). Spastin Binds to Lipid Droplets and Affects Lipid Metabolism. *PLoS Genet.* 11, e1005149. doi:10.1371/journal.pgen.1005149
- Park, S. H., Zhu, P.-P., Parker, R. L., and Blackstone, C. (2010). Hereditary Spastic Paraplegia Proteins REEP1, Spastin, and Atlantin-1 Coordinate Microtubule Interactions with the Tubular ER Network. *J. Clin. Invest.* 120, 1097–1110. doi:10.1172/JCI40979
- Parodi, L., Coarelli, G., Stevanin, G., Brice, A., and Durr, A. (2018a). Hereditary Ataxias and Paraparesias: Clinical and Genetic Update. *Curr. Opin. Neurol.* 31, 462–471. doi:10.1097/WCO.0000000000000585
- Parodi, L., Fenu, S., Barbier, M., Banneau, G., Duyckaerts, C., Tezenas du Montcel, S., et al. (2018b). Spastic Paraplegia Due to SPAST Mutations Is Modified by the Underlying Mutation and Sex. *Brain J. Neurol.* 141, 3331–3342. doi:10.1093/brain/awy285
- Parodi, L., Rydning, S. L., Tallaksen, C., and Durr, A. (1993). “Spastic Paraplegia 4,” in *GeneReviews*®. Editors M. P. Adam, H. H. Ardinger, R. A. Pagon, S. E. Wallace, L. J. Bean, and K. Stephens (Seattle, WA: University of Washington). Available at: <http://www.ncbi.nlm.nih.gov/books/NBK1160/>.
- Patel, H., Cross, H., Proukakis, C., Hershberger, R., Bork, P., Ciccarelli, F. D., et al. (2002). SPG20 Is Mutated in Troyer Syndrome, An Hereditary Spastic Paraplegia. *Nat. Genet.* 31, 347–348. doi:10.1038/ng937
- Penazzi, L., Bakota, L., and Brandt, R. (2016). Microtubule Dynamics in Neuronal Development, Plasticity, and Neurodegeneration. *Int. Rev. Cel Mol. Biol.* 321, 89–169. doi:10.1016/bs.ircmb.2015.09.004
- Pennings, M., Schouten, M. I., van Gaalen, J., Meijer, R. P. P., de Bot, S. T., Kriek, M., et al. (2020). KIF1A Variants Are a Frequent Cause of Autosomal Dominant Hereditary Spastic Paraplegia. *Eur. J. Hum. Genet.* 28, 40–49. doi:10.1038/s41431-019-0497-z
- Pirozzi, M., Quattrini, A., Andolfi, G., Dina, G., Malaguti, M. C., Auricchio, A., et al. (2006). Intramuscular Viral Delivery of Paraplegin Rescues Peripheral Axonopathy in a Model of Hereditary Spastic Paraplegia. *J. Clin. Invest.* 116, 202–208. doi:10.1172/JCI26210
- Pozner, T., Regensburger, M., Engelhorn, T., Winkler, J., and Winner, B. (2020). Janus-faced Spatacsin (SPG11): Involvement in Neurodevelopment and Multisystem Neurodegeneration. *Brain J. Neurol.* 143, 2369–2379. doi:10.1093/brain/awaa099
- Pozner, T., Schray, A., Regensburger, M., Lie, D. C., Schlötzer-Schrehardt, U., Winkler, J., et al. (2018). Tideglusib Rescues Neurite Pathology of SPG11 iPSC Derived Cortical Neurons. *Front. Neurosci.* 12, 914. doi:10.3389/fnins.2018.00914
- Pujol, C., Legrand, A., Parodi, L., Thomas, P., Mochel, F., Saracino, D., et al. (2021). Implication of Folate Deficiency in CYP2U1 Loss of Function. *J. Exp. Med.* 218 (11), e20210846. doi:10.1084/jem.20210846
- Racis, L., Tessa, A., Pugliatti, M., Storti, E., Agnetti, V., and Santorelli, F. M. (2014). Infantile-onset Ascending Hereditary Spastic Paralysis: A Case Report and Brief Literature Review. *Eur. J. Paediatr. Neurol.* 18, 235–239. doi:10.1016/j.ejpn.2013.09.009
- Rainier, S., Bui, M., Mark, E., Thomas, D., Tokarz, D., Ming, L., et al. (2008). Neuropathy Target Esterase Gene Mutations Cause Motor Neuron Disease. *Am. J. Hum. Genet.* 82, 780–785. doi:10.1016/j.ajhg.2007.12.018
- Rainier, S., Chai, J.-H., Tokarz, D., Nicholls, R. D., and Fink, J. K. (2003). NIPA1 Gene Mutations Cause Autosomal Dominant Hereditary Spastic Paraplegia (SPG6). *Am. J. Hum. Genet.* 73, 967–971. doi:10.1086/378817
- Reid, E., Kloos, M., Ashley-Koch, A., Hughes, L., Bevan, S., Svenson, I. K., et al. (2002). A Kinesin Heavy Chain (KIF5A) Mutation in Hereditary Spastic Paraplegia (SPG10). *Am. J. Hum. Genet.* 71, 1189–1194. doi:10.1086/344210
- Renvoisé, B., Chang, J., Singh, R., Yonekawa, S., FitzGibbon, E. J., Mankodi, A., et al. (2014). Lysosomal Abnormalities in Hereditary Spastic Paraplegia Types SPG 15 and SPG 11. *Ann. Clin. Transl. Neurol.* 1, 379–389. doi:10.1002/acn3.64
- Rinaldi, C., Schmidt, T., Situ, A. J., Johnson, J. O., Lee, P. R., Chen, K.-L., et al. (2015). Mutation in CPT1C Associated with Pure Autosomal Dominant Spastic Paraplegia. *JAMA Neurol.* 72, 561–570. doi:10.1001/jamaneurol.2014.4769
- Rizzo, G., Tonon, C., Gramegna, L. L., Bassi, M. T., Lodi, R., and Liguori, R. (2020). “Eye of Tiger Sign” Mimic in Patients with Spastic Paraplegia Gene 7 (SPG7) Mutations. *Parkinsonism Relat. Disord.* 81, 158–160. doi:10.1016/j.parkreldis.2020.10.049
- Rodrigues, R., Silva, R., Branco, M., Brandão, E., Alonso, I., Ruano, L., et al. (2020). Determinants of Age at Onset in a Portuguese Cohort of Autosomal Dominant Spastic Paraplegia. *J. Neurol. Sci.* 410, 116646. doi:10.1016/j.jns.2019.116646
- Rosenthal, A., Jouet, M., and Kenwrick, S. (1992). Aberrant Splicing of Neural Cell Adhesion Molecule L1 mRNA in a Family with X-Linked Hydrocephalus. *Nat. Genet.* 2, 107–112. doi:10.1038/ng1092-107
- Ruano, L., Melo, C., Silva, M. C., and Coutinho, P. (2014). The Global Epidemiology of Hereditary Ataxia and Spastic Paraplegia: A Systematic Review of Prevalence Studies. *Neuroepidemiology* 42, 174–183. doi:10.1159/000358801
- Rubegni, A., Storti, E., Tessa, A., Federico, A., and Santorelli, F. M. (2015). Hereditary Spastic Paraplegia Type 11 with a Very Late Onset. *J. Neurol.* 262, 1987–1989. doi:10.1007/s00415-015-7854-9
- Rugarli, E. I., and Langer, T. (2006). Translating M-AAA Protease Function in Mitochondria to Hereditary Spastic Paraplegia. *Trends Mol. Med.* 12, 262–269. doi:10.1016/j.molmed.2006.04.002
- Rydning, S. L., Dudesek, A., Rimmele, F., Funke, C., Krüger, S., Biskup, S., et al. (2018). A Novel Heterozygous Variant in ERLIN2 causes Autosomal Dominant Pure Hereditary Spastic Paraplegia. *Eur. J. Neurol.* 25, 943–e71. doi:10.1111/ene.13625
- Rydning, S. L., Koht, J., Sheng, Y., Sowa, P., Hjorthaug, H. S., Wedding, I. M., et al. (2019). Biallelic POLR3A Variants Confirmed as a Frequent Cause of Hereditary Ataxia and Spastic Paraparesis. *Brain* 142, e12. doi:10.1093/brain/awz041
- Sambuughin, N., Goldfarb, L. G., Sivtseva, T. M., Davydova, T. K., Vladimirtsev, V. A., Osakovskiy, V. L., et al. (2015). Adult-onset Autosomal Dominant Spastic Paraplegia Linked to a GTPase-Effector Domain Mutation of Dynamin 2. *BMC Neurol.* 15, 223. doi:10.1186/s12883-015-0481-3
- Saugier-Verber, P., Munnich, A., Bonneau, D., Rozet, J.-M., Le Merrer, M., Gil, R., et al. (1994). X-linked Spastic Paraplegia and Pelizaeus-Merzbacher Disease Are Allelic Disorders at the Protolipid Protein Locus. *Nat. Genet.* 6, 257–262. doi:10.1038/ng0394-257
- Schickel, J., Pamminger, T., Ehrsam, A., Münch, S., Huang, X., Klopstock, T., et al. (2007). Isoform-specific Increase of Spastin Stability by N-Terminal Missense Variants Including Intragenic Modifiers of SPG4 hereditary Spastic Paraplegia. *Eur. J. Neurol.* 14, 1322–1328. doi:10.1111/j.1468-1331.2007.01971.x
- Schöls, L., Rattay, T. W., Martus, P., Meisner, C., Baets, J., Fischer, I., et al. (2017). Hereditary Spastic Paraplegia Type 5: Natural History, Biomarkers and a Randomized Controlled Trial. *Brain J. Neurol.* 140, 3112–3127. doi:10.1093/brain/awx273

- Schüle, R., Holland-Letz, T., Klimpe, S., Kassubek, J., Klopstock, T., Mall, V., et al. (2006). The Spastic Paraplegia Rating Scale (SPRS): A Reliable and Valid Measure of Disease Severity. *Neurology* 67, 430–434. doi:10.1212/01.wnl.0000228242.53336.90
- Schüle, R., Siddique, T., Deng, H.-X., Yang, Y., Donkervoort, S., Hansson, M., et al. (2010). Marked Accumulation of 27-hydroxycholesterol in SPG5 Patients with Hereditary Spastic Paresis. *J. Lipid Res.* 51, 819–823. doi:10.1194/jlr.M002543
- Schüle, R., Wiethoff, S., Martus, P., Karle, K. N., Otto, S., Klebe, S., et al. (2016). Hereditary Spastic Paraplegia: Clinicogenetic Lessons from 608 Patients. *Ann. Neurol.* 79, 646–658. doi:10.1002/ana.24611
- Schuurs-Hoeijmakers, J. H. M., Geraghty, M. T., Kamsteeg, E.-J., Ben-Salem, S., de Bot, S. T., Nijhof, B., et al. (2012). Mutations in DDHD2, Encoding an Intracellular Phospholipase A1, Cause a Recessive Form of Complex Hereditary Spastic Paraplegia. *Am. J. Hum. Genet.* 91, 1073–1081. doi:10.1016/j.ajhg.2012.10.017
- Seidel, K., Siswanto, S., Fredrich, M., Bouzrou, M., Brunt, E. R., van Leeuwen, F. W., et al. (2015). Polyglutamine Aggregation in Huntington's Disease and Spinocerebellar Ataxia Type 3: Similar Mechanisms in Aggregate Formation. *Neuropathol. Appl. Neurobiol.* 42, 153–166. doi:10.1111/nan.12253
- Seri, M., Cusano, R., Forabosco, P., Cinti, R., Caroli, F., Picco, P., et al. (1999). Genetic Mapping to 10q23.3-q24.2, in a Large Italian Pedigree, of a New Syndrome Showing Bilateral Cataracts, Gastroesophageal Reflux, and Spastic Paraparesis with Amyotrophy. *Am. J. Hum. Genet.* 64, 586–593. doi:10.1086/302241
- Shanmughapriya, S., Rajan, S., Hoffman, N. E., Higgins, A. M., Tomar, D., Nemani, N., et al. (2015). SPG7 Is an Essential and Conserved Component of the Mitochondrial Permeability Transition Pore. *Mol. Cell* 60, 47–62. doi:10.1016/j.molcel.2015.08.009
- Shibata, Y., Shemesh, T., Prinz, W. A., Palazzo, A. F., Kozlov, M. M., and Rapoport, T. A. (2010). Mechanisms Determining the Morphology of the Peripheral ER. *Cell* 143, 774–788. doi:10.1016/j.cell.2010.11.007
- Shimazaki, H., Honda, J., Naoi, T., Namekawa, M., Nakano, I., Yazaki, M., et al. (2014). Autosomal-recessive Complicated Spastic Paraplegia with a Novel Lysosomal Trafficking Regulator Gene Mutation. *J. Neurol. Neurosurg. Psychiatry* 85, 1024–1028. doi:10.1136/jnnp-2013-306981
- Shimazaki, H., Takiyama, Y., Ishiura, H., Sakai, C., Matsushima, Y., Hatakeyama, H., et al. (2012). A Homozygous Mutation of C12orf65 Causes Spastic Paraplegia with Optic Atrophy and Neuropathy (SPG55). *J. Med. Genet.* 49, 777–784. doi:10.1136/jmedgenet-2012-101212
- Simone, M., Trabacca, A., Panzeri, E., Losito, L., Citterio, A., and Bassi, M. T. (2018). KIF5A and ALS2 Variants in a Family with Hereditary Spastic Paraplegia and Amyotrophic Lateral Sclerosis. *Front. Neurol.* 9, 1078. doi:10.3389/fneur.2018.01078
- Simpson, M. A., Cross, H., Proukakis, C., Pryde, A., Hershberger, R., Chatonnet, A., et al. (2003). Maspardin Is Mutated in Mast Syndrome, a Complicated Form of Hereditary Spastic Paraplegia Associated with Dementia. *Am. J. Hum. Genet.* 73, 1147–1156. doi:10.1086/379522
- Ślabicki, M., Theis, M., Krastev, D. B., Samsonov, S., Mundwiller, E., Junqueira, M., et al. (2010). A Genome-Scale DNA Repair RNAi Screen Identifies SPG48 as a Novel Gene Associated with Hereditary Spastic Paraplegia. *Plos Biol.* 8, e1000408. doi:10.1371/journal.pbio.1000408
- Solowska, J. M., D'Rozario, M., Jean, D. C., Davidson, M. W., Marendra, D. R., and Baas, P. W. (2014). Pathogenic Mutation of Spastin Has Gain-Of-Function Effects on Microtubule Dynamics. *J. Neurosci.* 34, 1856–1867. doi:10.1523/JNEUROSCI.3309-13.2014
- Solowska, J. M., Garbern, J. Y., and Baas, P. W. (2010). Evaluation of Loss of Function as an Explanation for SPG4-Based Hereditary Spastic Paraplegia. *Hum. Mol. Genet.* 19, 2767–2779. doi:10.1093/hmg/ddq177
- Song, Y., Wang, M., Mao, F., Shao, M., Zhao, B., Song, Z., et al. (2013). Knockdown of Pnpla6 Protein Results in Motor Neuron Defects in Zebrafish. *Dis. Model. Mech.* 6, 404–413. doi:10.1242/dmm.009688
- Sridharan, R., Radhakrishnan, K., Ashok, P. P., and Mousa, M. E. (1985). Prevalence and Pattern of Spinocerebellar Degenerations in Northeastern Libya. *Brain* 108 (Pt 4), 831–843. doi:10.1093/brain/108.4.831
- Starling, A., Rocco, P., Cambi, F., Hobson, G. M., Passos Bueno, M. R., Zatz, M., et al. (2002). Further Evidence for a Fourth Gene Causing X-Linked Pure Spastic Paraplegia. *Am. J. Med. Genet.* 111, 152–156. doi:10.1002/ajmg.10551
- Steinmüller, R., Lantigua-Cruz, A., Garcia-Garcia, R., Kostrzewa, M., Steinberger, D., and Müller, U. (1997). Evidence of a Third Locus in X-Linked Recessive Spastic Paraplegia. *Hum. Genet.* 100, 287–289. doi:10.1007/s004390050507
- Stevanin, G., Paternotte, C., Coutinho, P., Klebe, S., Elleuch, N., Loureiro, J. L., et al. (2007a). A New Locus for Autosomal Recessive Spastic Paraplegia (SPG32) on Chromosome 14q12-Q21. *Neurology* 68, 1837–1840. doi:10.1212/01.wnl.0000262043.53386.22
- Stevanin, G., Santorelli, F. M., Azzedine, H., Coutinho, P., Chomilier, J., Denora, P. S., et al. (2007b). Mutations in SPG11, Encoding Spatacsin, Are a Major Cause of Spastic Paraplegia with Thin Corpus Callosum. *Nat. Genet.* 39, 366–372. doi:10.1038/ng1980
- Subramony, S. H., Nguyen, T. V., Langford, L., Lin, X., Parent, A. D., and Zhang, J. (2009). Identification of a New Form of Autosomal Dominant Spastic Paraplegia. *Clin. Genet.* 76, 113–116. doi:10.1111/j.1399-0004.2008.01122.x
- Svenson, I. K., Kloos, M. T., Gaskell, P. C., Nance, M. A., Garbern, J. Y., Hisanaga, S.-i., et al. (2004). Intragenic Modifiers of Hereditary Spastic Paraplegia Due to Spastin Gene Mutations. *Neurogenetics* 5, 157–164. doi:10.1007/s10048-004-0186-z
- Synofzik, M., Gonzalez, M. A., Lourenco, C. M., Coutelier, M., Haack, T. B., Rebelo, A., et al. (2014). PNPLA6 Mutations Cause Boucher-Neuhäuser and Gordon Holmes Syndromes as Part of a Broad Neurodegenerative Spectrum. *Brain* 137, 69–77. doi:10.1093/brain/awt326
- Synofzik, M., and Ilg, W. (2014). Motor Training in Degenerative Spinocerebellar Disease: Ataxia-specific Improvements by Intensive Physiotherapy and Exergames. *Biomed. Res. Int.* 2014, 1–11. doi:10.1155/2014/583507
- Synofzik, M., and Schüle, R. (2017). Overcoming the Divide Between Ataxias and Spastic Paraplegias: Shared Phenotypes, Genes, and Pathways. *Mov Disord.* 32, 332–345. doi:10.1002/mds.26944
- Tadepalle, N., and Rugarli, E. I. (2021). Lipid Droplets in the Pathogenesis of Hereditary Spastic Paraplegia. *Front. Mol. Biosci.* 8, 673977. doi:10.3389/fmolb.2021.673977
- Terada, T., Kono, S., Ouchi, Y., Yoshida, K., Hamaya, Y., Kanaoka, S., et al. (2013). SPG3A-linked Hereditary Spastic Paraplegia Associated with Cerebral Glucose Hypometabolism. *Ann. Nucl. Med.* 27, 303–308. doi:10.1007/s12149-012-0673-5
- Tesson, C., Koht, J., and Stevanin, G. (2015). Delving into the Complexity of Hereditary Spastic Paraplegias: How Unexpected Phenotypes and Inheritance Modes Are Revolutionizing Their Nosology. *Hum. Genet.* 134, 511–538. doi:10.1007/s00439-015-1536-7
- Tesson, C., Nawara, M., Salih, M. A. M., Rossignol, R., Zaki, M. S., Al Balwi, M., et al. (2012). Alteration of Fatty-Acid-Metabolizing Enzymes Affects Mitochondrial Form and Function in Hereditary Spastic Paraplegia. *Am. J. Hum. Genet.* 91, 1051–1064. doi:10.1016/j.ajhg.2012.11.001
- Tiranti, V., Corona, P., Greco, M., Taanman, J.-W., Carrara, F., Lamantea, E., et al. (2000). A Novel Frameshift Mutation of the mtDNA COIII Gene Leads to Impaired Assembly of Cytochrome C Oxidase in a Patient Affected by Leigh-like Syndrome. *Hum. Mol. Genet.* 9, 2733–2742. doi:10.1093/hmg/9.18.2733
- Toupenet Marchesi, L., Leblanc, M., and Stevanin, G. (2021). Current Knowledge of Endolysosomal and Autophagy Defects in Hereditary Spastic Paraplegia. *Cells* 10, 1678. doi:10.3390/cells10071678
- Travaglini, L., Aiello, C., Stregapede, F., D'Amico, A., Alesi, V., Ciolfi, A., et al. (2018). The Impact of Next-Generation Sequencing on the Diagnosis of Pediatric-Onset Hereditary Spastic Paraplegias: New Genotype-Phenotype Correlations for Rare HSP-Related Genes. *Neurogenetics* 19, 111–121. doi:10.1007/s10048-018-0545-9
- Trotta, N., Orso, G., Rossetto, M. G., Daga, A., and Brodie, K. (2004). The Hereditary Spastic Paraplegia Gene, Spastin, Regulates Microtubule Stability to Modulate Synaptic Structure and Function. *Curr. Biol.* 14, 1135–1147. doi:10.1016/j.cub.2004.06.058
- Tsang, H. T. H., Edwards, T. L., Wang, X., Connell, J. W., Davies, R. J., Durrington, H. J., et al. (2009). The Hereditary Spastic Paraplegia Proteins NIPA1, Spastin and Spartin Are Inhibitors of Mammalian BMP Signalling. *Hum. Mol. Genet.* 18, 3805–3821. doi:10.1093/hmg/ddp324
- Tsouisidou, M. K., Ouahchi, K., Warner, T. T., Yang, Y., Simpson, M. A., Laing, N. G., et al. (2008). Sequence Alterations within CYP7B1 Implicate Defective Cholesterol Homeostasis in Motor-Neuron Degeneration. *Am. J. Hum. Genet.* 82, 510–515. doi:10.1016/j.ajhg.2007.10.001

- Tüysüz, B., Bilguvar, K., Koçer, N., Yalçınkaya, C., Çağlayan, O., Gül, E., et al. (2014). Autosomal Recessive Spastic Tetraplegia Caused by AP4M1 and AP4B1 Gene Mutation: Expansion of the Facial and Neuroimaging Features. *Am. J. Med. Genet.* 164, 1677–1685. doi:10.1002/ajmg.a.36514
- Vaccaro, A., Patten, S. A., Aggad, D., Julien, C., Maios, C., Kabashi, E., et al. (2013). Pharmacological Reduction of ER Stress Protects Against TDP-43 Neuronal Toxicity In Vivo. *Neurobiol. Dis.* 55, 64–75. doi:10.1016/j.nbd.2013.03.015
- Valdmanis, P. N., Meijer, I. A., Reynolds, A., Lei, A., MacLeod, P., Schlesinger, D., et al. (2007). Mutations in the KIAA0196 Gene at the SPG8 Locus Cause Hereditary Spastic Paraplegia. *Am. J. Hum. Genet.* 80, 152–161. doi:10.1086/510782
- Valente, E. M., Brancati, F., Caputo, V., Bertini, E., Patrono, C., Costanti, D., et al. (2002). Novel Locus for Autosomal Dominant Pure Hereditary Spastic Paraplegia (SPG19) Maps to Chromosome 9q33-Q34. *Ann. Neurol.* 51, 681–685. doi:10.1002/ana.10204
- Vallat, J.-M., Goizet, C., Tazir, M., Couratier, P., Magy, L., and Mathis, S. (2016). Classifications of Neurogenetic Diseases: An Increasingly Complex Problem. *Revue Neurologique* 172, 339–349. doi:10.1016/j.neurol.2016.04.005
- van de Warrenburg, B. P., Schouten, M. I., de Bot, S. T., Vermeer, S., Meijer, R., Pennings, M., et al. (2016). Clinical Exome Sequencing for Cerebellar Ataxia and Spastic Paraplegia Uncovers Novel Gene-Disease Associations and Unanticipated Rare Disorders. *Eur. J. Hum. Genet.* 24, 1460–1466. doi:10.1038/ejhg.2016.42
- Vavouraki, N., Tomkins, J. E., Kara, E., Houlden, H., Hardy, J., Tindall, M. J., et al. (2021). Integrating Protein Networks and Machine Learning for Disease Stratification in the Hereditary Spastic Paraplegias. *iScience* 24, 102484. doi:10.1016/j.isci.2021.102484
- Vaz, F. M., McDermott, J. H., Alders, M., Wortmann, S. B., Kölker, S., Pras-Raves, M. L., et al. (2019). Mutations in PCYT2 Disrupt Etherlipid Biosynthesis and Cause a Complex Hereditary Spastic Paraplegia. *Brain J. Neurol.* 142, 3382–3397. doi:10.1093/brain/awz291
- Vazza, G., Zortea, M., Boaretto, F., Micaglio, G. F., Sartori, V., and Mostacciolo, M. L. (2000). A New Locus for Autosomal Recessive Spastic Paraplegia Associated with Mental Retardation and Distal Motor Neuropathy, SPG14, Maps to Chromosome 3q27-Q28. *Am. J. Hum. Genet.* 67, 504–509. doi:10.1086/303017
- Vecchia, S. D., Tessa, A., Dosi, C., Baldacci, J., Pasquariello, R., Antenora, A., et al. (2021). Monoallelic KIF1A-Related Disorders: a Multicenter Cross Sectional Study and Systematic Literature Review. *J. Neurol.* [Epub ahead of print]. doi:10.1007/s00415-021-10792-3
- Verkerk, A. J. M. H., Schot, R., Dumee, B., Schellekens, K., Swagemakers, S., Bertoli-Avella, A. M., et al. (2009). Mutation in the AP4M1 Gene Provides a Model for Neuroaxonal Injury in Cerebral Palsy. *Am. J. Hum. Genet.* 85, 40–52. doi:10.1016/j.ajhg.2009.06.004
- Verny, C., Guegen, N., Desquiret, V., Chevrollier, A., Prundean, A., Dubas, F., et al. (2011). Hereditary Spastic Paraplegia-like Disorder Due to a Mitochondrial ATP6 Gene Point Mutation. *Mitochondrion* 11, 70–75. doi:10.1016/j.mito.2010.07.006
- Voeltz, G. K., Prinz, W. A., Shibata, Y., Rist, J. M., and Rapoport, T. A. (2006). A Class of Membrane Proteins Shaping the Tubular Endoplasmic Reticulum. *Cell* 124, 573–586. doi:10.1016/j.cell.2005.11.047
- Wagner, M., Osborn, D. P. S., Gehweiler, I., Nagel, M., Ulmer, U., Bakhtiar, S., et al. (2019). Bi-allelic Variants in RNF170 Are Associated with Hereditary Spastic Paraplegia. *Nat. Commun.* 10, 4790. doi:10.1038/s41467-019-12620-9
- Wakil, S. M., Monies, D., Hagos, S., Al-Ajlan, F., Finsterer, J., Al Qahtani, A., et al. (2018). Exome Sequencing: Mutilating Sensory Neuropathy with Spastic Paraplegia Due to a Mutation in FAM134B Gene. *Case Rep. Genet.* 2018, 1–5. doi:10.1155/2018/9468049
- Wakil, S. M., Ramzan, K., Abuthuraya, R., Hagos, S., Al-Dossari, H., Al-Omar, R., et al. (2014). Infantile-onset Ascending Hereditary Spastic Paraplegia with Bulbar Involvement Due to the Novel ALS2 Mutation c.2761C > T. *Gene* 536, 217–220. doi:10.1016/j.gene.2013.11.043
- Wali, G., Kumar, K. R., Lyanage, E., Davis, R. L., Mackay-Sim, A., and Sue, C. M. (2020). Mitochondrial Function in Hereditary Spastic Paraplegia: Deficits in SPG7 but Not SPAST Patient-Derived Stem Cells. *Front. Neurosci.* 14, 820. doi:10.3389/fnins.2020.00820
- Wang, R. N., Green, J., Wang, Z., Deng, Y., Qiao, M., Peabody, M., et al. (2014). Bone Morphogenetic Protein (BMP) Signaling in Development and Human Diseases. *Genes Dis.* 1, 87–105. doi:10.1016/j.gendis.2014.07.005
- Wang, X., Shaw, W. R., Tsang, H. T. H., Reid, E., and O’Kane, C. J. (2007). Drosophila Spichthyn Inhibits BMP Signaling and Regulates Synaptic Growth and Axonal Microtubules. *Nat. Neurosci.* 10, 177–185. doi:10.1038/nn1841
- Watanabe, F., Arnold, W. D., Hammer, R. E., Ghodsizadeh, O., Moti, H., Schumer, M., et al. (2013). Pathogenesis of Autosomal Dominant Hereditary Spastic Paraplegia (SPG6) Revealed by a Rat Model. *J. Neuropathol. Exp. Neurol.* 72, 1016–1028. doi:10.1097/NEN.0000000000000000
- Wedding, I. M., Koht, J., Tran, G. T., Misceo, D., Selmer, K. K., Holmgren, A., et al. (2014). Spastic Paraplegia Type 7 Is Associated with Multiple Mitochondrial DNA Deletions. *PLOS ONE* 9, e86340. doi:10.1371/journal.pone.0086340
- Wen, Z., Han, L., Bamberg, J. R., Shim, S., Ming, G.-L., and Zheng, J. Q. (2007). BMP Gradients Steer Nerve Growth Cones by a Balancing Act of LIM Kinase and Slingshot Phosphatase on ADF/cofilin. *J. Cell Biol.* 178, 107–119. doi:10.1083/jcb.200703055
- Wilkinson, P. A., Simpson, M. A., Bastaki, L., Patel, H., Reed, J. A., Kalidas, K., et al. (2005). A New Locus for Autosomal Recessive Complicated Hereditary Spastic Paraplegia (SPG26) Maps to Chromosome 12p11.1-12q14. *J. Med. Genet.* 42, 80–82. doi:10.1136/jmg.2004.020172
- Windpassinger, C., Auer-Grumbach, M., Irobi, J., Patel, H., Petek, E., Hörl, G., et al. (2004). Heterozygous Missense Mutations in BSCL2 Are Associated with Distal Hereditary Motor Neuropathy and Silver Syndrome. *Nat. Genet.* 36, 271–276. doi:10.1038/ng1313
- Xu, S., Stern, M., and McNew, J. A. (2017). Beneficial Effects of Rapamycin in a Drosophila Model for Hereditary Spastic Paraplegia. *J. Cell Sci.* 130, 453–465. doi:10.1242/jcs.196741
- Xylaki, M., Atzler, B., and Outeiro, T. F. (2019). Epigenetics of the Synapse in Neurodegeneration. *Curr. Neurol. Neurosci. Rep.* 19, 72. doi:10.1007/s11910-019-0995-y
- Yadav, P. K., and Rajasekharan, R. (2016). Misregulation of a DDHD Domain-Containing Lipase Causes Mitochondrial Dysfunction in Yeast. *J. Biol. Chem.* 291, 18562–18581. doi:10.1074/jbc.M116.733378
- Yahia, A., Chen, Z. S., Ahmed, A. E., Emad, S., Adil, R., Abubaker, R., et al. (2021). A Heterozygous Mutation in the CCDC88C Gene Likely Causes Early-Onset Pure Hereditary Spastic Paraplegia: A Case Report. *BMC Neurol.* 21, 78. doi:10.1186/s12883-021-02113-y
- Yahia, A., Elsayed, L., Babai, A., Salih, M. A., El-Sadig, S. M., Amin, M., et al. (2018). Intra-familial Phenotypic Heterogeneity in a Sudanese Family with DARS2-Related Leukoencephalopathy, Brainstem and Spinal Cord Involvement and Lactate Elevation: A Case Report. *BMC Neurol.* 18, 175. doi:10.1186/s12883-018-1180-7
- Yang, Y., Liu, W., Fang, Z., Shi, J., Che, F., He, C., et al. (2016). A Newly Identified Missense Mutation in FARS2 Causes Autosomal Recessive Spastic Paraplegia. *Hum. Mutat.* 37, 165–169. doi:10.1002/humu.22930
- Yıldırım, Y., Kocasoy Orhan, E., Uğur Işeri, S. A., Serdaroglu-Ofıazer, P., Kara, B., Solakoğlu, S., et al. (2011). A Frameshift Mutation of ERLIN2 in Recessive Intellectual Disability, Motor Dysfunction and Multiple Joint Contractures. *Hum. Mol. Genet.* 20, 1886–1892. doi:10.1093/hmg/ddr070
- Zaki, M., Abdel-Hamid, M., Abdel-Salam, G., Boespflug-Tanguy, O., Cordeiro, N., Gleeson, J., et al. (2014). Mutations in ADARI, IFIH1, and RNASEH2B Presenting as Spastic Paraplegia. *Neuropediatrics* 45, 386–391. doi:10.1055/s-0034-1389161
- Zanni, G., Scotton, C., Passarelli, C., Fang, M., Barresi, S., Dallapiccola, B., et al. (2013). Exome Sequencing in a Family with Intellectual Disability, Early Onset Spasticity, and Cerebellar Atrophy Detects a Novel Mutation in EXOSC3. *Neurogenetics* 14, 247–250. doi:10.1007/s10048-013-0371-z
- Zhao, G.-h., Hu, Z.-m., Shen, L., Jiang, H., Ren, Z.-j., Liu, X.-m., et al. (2008). A Novel Candidate Locus on Chromosome 11p14.1-p11.2 for Autosomal Dominant Hereditary Spastic Paraplegia. *Chin. Med. J.* 121, 430–434. doi:10.1097/00029330-200803010-00012
- Zhao, X., Alvarado, D., Rainier, S., Lemons, R., Hedera, P., Weber, C. H., et al. (2001). Mutations in a Newly Identified GTPase Gene Cause Autosomal Dominant Hereditary Spastic Paraplegia. *Nat. Genet.* 29, 326–331. doi:10.1038/ng758
- Zhu, P.-P., Denton, K. R., Pierson, T. M., Li, X.-J., and Blackstone, C. (2014). Pharmacologic Rescue of Axon Growth Defects in a Human iPSC Model of

- Hereditary Spastic Paraplegia SPG3A. *Hum. Mol. Genet.* 23, 5638–5648. doi:10.1093/hmg/ddu280
- Zivony-Elboun, Y., Westbroek, W., Kfir, N., Savitzki, D., Shoval, Y., Bloom, A., et al. (2012). A Founder Mutation in Vps37A Causes Autosomal Recessive Complex Hereditary Spastic Paraparesis. *J. Med. Genet.* 49, 462–472. doi:10.1136/jmedgenet-2012-100742
- Zortea, M., Vettori, A., Trevisan, C. P., Bellini, S., Vazza, G., Armani, M., et al. (2002). Genetic Mapping of a Susceptibility Locus for Disc Herniation and Spastic Paraplegia on 6q23.3-q24.1. *J. Med. Genet.* 39, 387–390. doi:10.1136/jmg.39.6.387
- Züchner, S., Wang, G., Tran-Viet, K.-N., Nance, M. A., Gaskell, P. C., Vance, J. M., et al. (2006). Mutations in the Novel Mitochondrial Protein REEP1 Cause Hereditary Spastic Paraplegia Type 31. *Am. J. Hum. Genet.* 79, 365–369. doi:10.1086/505361

Conflict of Interest: The authors declare that the research was conducted in the absence of any commercial or financial relationships that could be construed as a

potential conflict of interest, except a grant received by GS from Biogen, but unrelated to this work.

Publisher's Note: All claims expressed in this article are solely those of the authors and do not necessarily represent those of their affiliated organizations, or those of the publisher, the editors and the reviewers. Any product that may be evaluated in this article, or claim that may be made by its manufacturer, is not guaranteed or endorsed by the publisher.

Copyright © 2021 Elsayed, Eltazi, Ahmed and Stevanin. This is an open-access article distributed under the terms of the Creative Commons Attribution License (CC BY). The use, distribution or reproduction in other forums is permitted, provided the original author(s) and the copyright owner(s) are credited and that the original publication in this journal is cited, in accordance with accepted academic practice. No use, distribution or reproduction is permitted which does not comply with these terms.