



# Characterization of the Gut Microbiota in Individuals with Overweight or Obesity during a Real-World Weight Loss Dietary Program: A Focus on the Bacteroides 2 Enterotype

Rohia Alili, Eugeni Belda, Odile Fabre, Véronique Pelloux, Nils Giordano, Rémy Legrand, Pierre Bel Lassen, Timothy D Swartz, Jean-Daniel Zucker, Karine Clément

## ► To cite this version:

Rohia Alili, Eugeni Belda, Odile Fabre, Véronique Pelloux, Nils Giordano, et al.. Characterization of the Gut Microbiota in Individuals with Overweight or Obesity during a Real-World Weight Loss Dietary Program: A Focus on the Bacteroides 2 Enterotype. Biomedicines, 2021, 10 (1), pp.16. 10.3390/biomedicines10010016 . hal-03542339

**HAL Id: hal-03542339**

**<https://hal.sorbonne-universite.fr/hal-03542339>**

Submitted on 25 Jan 2022

**HAL** is a multi-disciplinary open access archive for the deposit and dissemination of scientific research documents, whether they are published or not. The documents may come from teaching and research institutions in France or abroad, or from public or private research centers.

L'archive ouverte pluridisciplinaire **HAL**, est destinée au dépôt et à la diffusion de documents scientifiques de niveau recherche, publiés ou non, émanant des établissements d'enseignement et de recherche français ou étrangers, des laboratoires publics ou privés.



## Article

# Characterization of the Gut Microbiota in Individuals with Overweight or Obesity during a Real-World Weight Loss Dietary Program: A Focus on the Bacteroides 2 Enterotype

Rohia Alili <sup>1</sup>, Eugeni Belda <sup>2,\*</sup>, Odile Fabre <sup>3</sup>, Véronique Pelloux <sup>1</sup> , Nils Giordano <sup>2,3</sup> , Rémy Legrand <sup>3</sup>, Pierre Bel Lassen <sup>1,4</sup> , Timothy D. Swartz <sup>2</sup>, Jean-Daniel Zucker <sup>1,4</sup> and Karine Clément <sup>1,5,\*</sup>

<sup>1</sup> Nutrition and Obesities, Systemic Approaches, NutriOmics Research Unit, INSERM, Sorbonne Université, 75013 Paris, France; rohia.alili@aphp.fr (R.A.); veronique.pelloux-gervais@upmc.fr (V.P.); pierre.bellassen@aphp.fr (P.B.L.); jean-daniel.zucker@ird.fr (J.-D.Z.)

<sup>2</sup> Integrative Phenomics, 75011 Paris, France; nils.giordano@integrative-phenomics.com (N.G.); timothy.swartz@integrative-phenomics.com (T.D.S.)

<sup>3</sup> Groupe Éthique et Santé, 13400 Aubagne, France; odile.fabre@groupeethiquesante.com (O.F.); remy.legrand@groupeethiquesante.com (R.L.)

<sup>4</sup> UMMISCO, Unité de Modélisation Mathématique et Informatique des Systèmes Complexes, IRD, Sorbonne Université, F-93143 Bondy, France

<sup>5</sup> Nutrition Department, Pitié-Salpêtrière Hospital, Assistance Publique-Hôpitaux de Paris, 75013 Paris, France

\* Correspondence: e.belda@integrative-phenomics.com (E.B.); karine.clement@inserm.fr (K.C.)



**Citation:** Alili, R.; Belda, E.; Fabre, O.; Pelloux, V.; Giordano, N.; Legrand, R.; Bel Lassen, P.; Swartz, T.D.; Zucker, J.-D.; Clément, K. Characterization of the Gut Microbiota in Individuals with Overweight or Obesity during a Real-World Weight Loss Dietary Program: A Focus on the Bacteroides 2 Enterotype. *Biomedicines* **2022**, *10*, 16. <https://doi.org/10.3390/biomedicines10010016>

Academic Editor: Philippe Gerard

Received: 28 October 2021

Accepted: 17 December 2021

Published: 22 December 2021

**Publisher's Note:** MDPI stays neutral with regard to jurisdictional claims in published maps and institutional affiliations.



**Copyright:** © 2021 by the authors. Licensee MDPI, Basel, Switzerland. This article is an open access article distributed under the terms and conditions of the Creative Commons Attribution (CC BY) license (<https://creativecommons.org/licenses/by/4.0/>).

**Abstract:** Background: Dietary intervention is a cornerstone of weight loss therapies. In obesity, a dysbiotic gut microbiota (GM) is characterized by high levels of Bacteroides lineages and low diversity. We examined the GM composition changes, including the Bacteroides 2 enterotype (Bact2), in a real-world weight loss study in subjects following a high-protein hypocaloric diet with or without a live microorganisms (LMP) supplement. Method: 263 volunteers were part of this real-world weight loss program. The first phase was a high-protein low-carbohydrate calorie restriction diet with or without LMP supplements. Fecal samples were obtained at baseline and after 10% weight loss for 163 subjects. Metagenomic profiling was obtained by shotgun sequencing. Results: At baseline, the Bact2 enterotype was more prevalent in subjects with aggravated obesity and metabolic alterations. After weight loss, diversity increased and Bact2 prevalence decreased in subjects with lower GM diversity at baseline, notably in LMP consumers. Significant increases in *Akkermansia muciniphila* and *Parabacteroides distasonis* and significant decreases of *Eubacterium rectale*, *Streptococcus thermophilus* and Bifidobacterial lineages were observed after weight loss. Conclusions: Baseline microbiome composition is associated with differential changes in GM diversity and Bact2 enterotype prevalence after weight loss. Examining these signatures could drive future personalized nutrition efforts towards more favorable microbiome compositions.

**Keywords:** obesity; gut microbiota; weight loss; Bacteroides 2 enterotype; real-world dietary intervention; nanopore technology

## 1. Introduction

Overweight and obesity are global health concerns with the number of obesity cases having tripled since 1975, resulting in 39% and 13% of adults being overweight or obese, respectively, in 2016 [1]. An elevated Body Mass Index (BMI) is also a major risk factor for type 2 diabetes, dyslipidemia, hypertension, cardiovascular and liver diseases, kidney failure, osteoarthritis, and several cancers [2,3]. Importantly, a 5% reduction in body weight can significantly improve metabolic functions and decrease comorbidity risks [4]. Lifestyle and diet changes are cornerstones of weight loss management [3]. However, individual weight loss responses to diet and lifestyle changes are highly variable, and the effectiveness of dietary interventions could be improved by identifying the underlying factors behind this variability.

The gut microbiota (GM), known for its role in health and metabolic diseases, is strongly influenced by dietary intake [5] and is increasingly suggested as an important factor contributing to individual dietary responses [6–8]. Obesity is characterized by GM alterations resulting in dysbiosis. This includes a loss of microbial diversity, and changes in composition, both of which are correlated with host metabolic and inflammatory perturbations. Moreover, increasing BMI into severe obesity is associated with further microbiota diversity loss [6,9]. At taxonomic levels, an altered ratio between the Firmicutes and Bacteroidetes phyla has been proposed as a signature of obesity, although with conflicting reports. For example, both low and high Firmicutes/Bacteroides ratios have been reported in obese subjects [10] (and references therein). Substantial temporal variability in human gut microbiome profiles could partially explain those conflicting reports in the association of metagenomic features with obesity, which could be resolved with repeated measurement designs as used for robust biomarker discovery. Analyses can also be focused on community-wide microbiome descriptors and indices [11].

Some of these descriptors are the GM enterotypes, which are discrete classifications of individual microbiome compositions [12]. For instance, the Bacteroides 2 (Bact2) enterotype is a specific microbiome composition enriched in the relative abundance of Bacteroides genera. Bact2 has been associated with an overall low microbial cell density and successfully associated with obesity severity [13,14]. Given the high complexity of GM community compositions, both identifying and using enterotypes as tools to describe the functional activity of the microbiome have been controversial in the field of metagenomics [15]. Nonetheless, the Bact2 dysbiotic enterotype may stand out because, in addition to its association with obesity [9], it is more prevalent in several inflammatory-related diseases including ulcerative colitis [13], inflammatory bowel disease and primary sclerosing cholangitis [16]. The Bact2 enterotype is thus an emerging but robust signature of a dysbiotic microbiome, yet its relevance during weight loss and dietary intervention has not been examined.

Lifestyle [6], pharmaceutical, and even surgical weight-loss interventions have a strong and rapid influence on GM composition and functionality [17]. Specifically, dietary intervention-induced weight loss increases microbiome diversity, richness, and the abundance of beneficial microbial species, such as *Akkermansia muciniphila*, *Lactobacillus*, or *Bifidobacterium* [6,18,19]. Moreover, our group and others reported that pre-interventional GM features can also influence GM responses and host metabolic outcomes during a dietary intervention [6,9,19]. In addition, the use of microbiome-targeted supplements, an umbrella term including probiotics, prebiotics, or synbiotics, can also modulate GM composition and eventually improve metabolic health [20,21].

Despite the pre-clinical and clinical evidence demonstrating the link between diet, microbiome, and weight loss, there is a general lack of large-scale longitudinal real-world evidence. Thus, the goal of this study was to answer five major questions: (1) What are the GM compositional characteristics in a real-world population with overweight and obesity, and how do these characteristics relate to metabolic health parameters before weight loss? (2) Is there a relationship between the dysbiotic Bact2 microbiome composition and subjects' clinical features? (3) Are these GM features affected by weight loss induced by a hypocaloric high-protein, low-glycemic index diet? (4) Are GM baseline characteristics associated with GM changes post-weight loss and/or with weight loss-related clinical outcomes? (5) Does the use of a live microbial product (LMP) improve weight-loss outcomes and/or provide benefits to GM composition during a high-protein calorie-restricted diet?

Here, we address these questions by leveraging a real-world French study on volunteers with overweight or obesity following a standardized medical and dietary weight-loss program as part of standard care.

## 2. Subjects and Methods

### 2.1. Overall Dietary Program

#### 2.1.1. Nutritional and Psycho-Behavioral Reeducation (RNPC) Program

The RNPC program (Rééducation Nutritionnelle et Psycho-Comportementale) is a weight loss program developed by a healthcare provider and organized as a network across 13 regions in France. This is a real-world weight loss intervention that was developed based on outcomes of a clinical intervention from the European DIOGENES consortium [22]. The RNPC program is conducted by a registered dietitian in each center. The majority of patients with overweight and obesity participating in the RNPC program are referred to RNPC centers by their primary care physicians (PCP) for weight management, but patients can also join the program without being directly referred by their physician.

The care provider (RNPC) proposes a weight loss program in three phases that is standardized across all centers. Phase 1 consists of 8 weeks during which individuals follow a high-protein, low-carbohydrate calorie-restricted diet, including the intake of 3 to 5 commercial food products enriched in protein; the number of proposed food supplement depend on an individual's lean body mass percentage and initial body weight. During this first phase, calorie intake is standardized to 800 kcal for women and 1000 kcal for men. At the end of phase 1, the subjects start a stabilization phase (phase 2) during which the protein supplements are gradually reduced and a normal diet is reintroduced while continuing to emphasize high protein and low glycemic index carbohydrate intakes. Phase 3 is the weight maintenance phase. This regimen has been previously described in detail [23].

Based on these three standardized phases, the registered dietitian recommends varying quantities of vegetables, animal proteins (meat, fish, eggs, or shellfish), and food supplements rich in protein (in the form of cookies, cereal bars, bread, crackers, soups, omelets, drinks, and desserts). During phase 1 (weight loss), these dietary supplements contribute to 40% of the total energy intake. Each 30 g serving provides approximately 110 kcal and contains 15.8 g of protein, 2.4 g of carbohydrates, 5.4 g of fat, and 2.3 g of fiber. Supplements are enriched with vitamins and minerals to avoid possible deficiencies due to the caloric restriction. These products comply with the requirements specified by the European Food Safety Authority (EFSA) Panel on Dietetic Products Nutrition and Allergies (NDA), 2015 [24]. During phase 2 (weight stabilization phases), the intake of food supplements gradually decreases and is replaced by whole food. At the end of the stabilization period, the target macronutrient composition is 25% protein, 45% carbohydrate, and 30% fat. Throughout all phases, participants are recommended a live microbial product (LMP), which is a food-grade supplement containing a mixture of 11 living bacteria strains and one yeast species with the following composition *Lactobacillus rhamnosus* ATCC n. 53103 (lactose):  $2.5 \times 10^9$  UFC, *Lactobacillus reuteri* DSM 23878 (lactose):  $2.5 \times 10^9$  UFC, *Lactobacillus gasseri* BIO6369:  $6.25 \times 10^9$ , *Lactobacillus acidophilus* W22:  $3.9 \times 10^5$  UFC, *Lactobacillus plantarum* W21:  $3.65 \times 10^5$  UFC, *Lactococcus lactis* W19:  $3.65 \times 10^5$  UFC, *Lactobacillus paracasei* W20:  $2.8 \times 10^5$  UFC, *Lactobacillus salivarius* W24:  $2.8 \times 10^5$  UFC, *Bifidobacterium lactis* W51:  $2.8 \times 10^5$  UFC, *Bifidobacterium lactis* W52:  $0.56 \times 10^6$  UFC, *Enterococcus faecium* W54:  $2.8 \times 10^5$  UFC and 100 mg de *Saccharomyces cerevisiae*. This food supplement also contains inulin (27.6 mg), and fructooligosaccharides (2.40 mg). The RNPC LMP supplement is commercialized under the name "MGF" (for *Megaflora*), which is a combination of different products and ingredients: Megaflora9, Rhamnosus LRGG, *Lactobacillus reuteri* LRE02, BoulardII, *Lactobacillus gasseri* LGS06.

Subjects are followed in each center by a registered dietitian every two weeks who measures weight, waist circumference, and body fat mass by impedancemetry (Beurer BG42, Ulm, Germany) during each visit, a blood panel is prescribed by their PCP to evaluate glycemia, insulinemia, triglycerides, and liver enzyme before the intervention and after at least 10% weight loss.

### 2.1.2. The GutInside Study

We took advantage of the standardized real-world intervention in RNPC centers to examine the GM profile of volunteers before and after 10% weight loss. In a registered protocol (NCT04822948), dietitians (as investigators) recruited patients before starting the RNPC program. All subjects signed informed consent before participating in the study. During their first visit, volunteers were requested to collect their stool sample before starting phase 1 and when 10% weight loss was reached, generally occurring during the first weight loss phase 1 (i.e., a hypocaloric high protein and low glycemic index carbohydrate diet). Otherwise, the subjects' follow-up was the same as those not participating in the GutInside study. Subjects were recruited from September 2018 to January 2020 in 64 French RNPC centers. The anthropometric characteristics of each participant were measured to determine body composition (by Beurer BG42 impedancemetry device) at baseline and at a 10% weight-loss period. A 12 h fasting blood sample was drawn and parameters relating to glucose and lipid homeostasis, and hepatic and kidney function were evaluated at the two time points. Inclusion criteria were as follows for subjects: age between 18 and 65 years old, a BMI  $\geq 25$  kg/m<sup>2</sup>, and having signed informed consent in an RNPC center. The exclusion criteria were pregnancy, breastfeeding, antiretroviral therapy, renal insufficiency, severe hepatic disease, and anemia ( $<10$  g/dl). Subjects with known gastrointestinal illness, having undergone bariatric surgery, presenting a weight loss of more than 10% of body weight during the last 3 months, and taking antibiotics, prebiotics, probiotics, or synbiotics, were also excluded.

### 2.2. Sample Collection and Bacterial DNA Extraction

A total of 426 stool samples were collected at home by 263 volunteers before starting the RNPC weight loss program (V1). For 163 of the 263 subjects, fresh stools were also collected after 10% of weight loss (V2). Stool samples were collected in Zymo DNA/RNA Shield-Fecal Collection Tube (Ozyme), which allows up to 2 g of stool sample to be collected. The tubes were sent by the French postal system and stored at room temperature at the sequencing center, according to manufacturers' directions. Bristol stool score was used to assess stool consistency.

Bacterial DNA extraction was performed using, "Pure Link™ Microbiome DNA Purification Kit" (Invitrogen, Paris, France) with the optimized protocol developed in our lab [25]. The DNA yield was evaluated by a fluorometer, Qubit (Life Technologies Alfortville, France), and DNA quality was evaluated by Nanodrop (Thermo Scientific, Alfortville, France) and Tape station (Agilent, Les Ulis, France).

### 2.3. Library Preparation and Sequencing

A total of 1.5 µg of DNA was used to perform PCR-free library construction. DNA end repair was performed using the NEBNext FFPE Repair Mix (New England Biolabs (NEB), Evry, France). We used NEBNext Ultra II End Repair/dA-Tailing Module (NEB) for the "end prep" step, 1D Native barcoding genomic DNA kit (Oxford Nanopore Technologies (ONT)), and "NEB Blunt/TA Ligase Master Mix kit (NEB) for DNA multiplexing and adapters ligation. Agentcourt AMPure XP (Beckman Coulter, Villepinte, France) beads were used for DNA purification.

Whole genome metagenomic sequencing was performed with a MinION sequencer (ONT) using 48 h runs and 12 samples per run. A rarefaction threshold of 10,000 reads per sample was used to perform metagenomic analysis.

### 2.4. Bioinformatics Treatment

Samples were sequenced over 35 runs with a total of 332.54 million reads generated (average 5.54 million reads per run) with an average size of 2.8 kilobases per read. Reads were base-called, quality filtered, and demultiplexed with Guppy (Version 2.1.3). In each run, at least 78.87% of sequencing reads could be confidently assigned to different sample barcodes (426,271.4 reads per sample). Taxonomic binning of Nanopore reads was carried

out in a two-step procedure. In a first step, we used Centrifuge [26] to remove human contaminants and classify reads with an NCBI reference taxonomic identifier, using the precompiled “P\_compressed\_b + v + h” database (shipped with Centrifuge) as a reference database. In a second step, the classified sequences were mapped against the corresponding reference genome sequence using Minimap2 with the map-ont option that is optimized for Oxford Nanopore reads [22] in order to filter out false-positive taxonomic assignments. Species-level abundance tables were built from taxonomic binning results and were integrated with taxonomic information and sample metadata in *phyloseq* R objects [27] for subsequent ecological analyses in R.

Alpha diversities (Observed species, Shannon) were computed from the rarified species abundance table with the estimated richness function of the *phyloseq* R package [28]. The *vegan* R package was used to compute Beta-diversity matrices from the rarified species abundance table collapsed at genus level (*vegdist* function), and to visualize microbiome similarities with principal coordinate analysis (PCoA) (*cmdscale* function) [29]. Enterotype classifications were performed from the genus abundance matrix using the Dirichlet multinomial mixture (DMM) method as described in Holmes and al. [30] and implemented in the Dirichlet Multinomial R package. The estimation of the explanatory power of clinical features regarding relative, genus-level, microbiome profiles variation was performed using univariate or multivariate stepwise distance-based redundancy analysis as implemented in the *vegan* R package [31].

The abundance of KEGG ortholog groups (KO groups) was quantified from species-level pan-genome KO tables built from reference genomes in the Centrifuge database, from which the abundance of KO was computed as the sum of the abundances of the species containing these KO groups. Gut metabolic modules (GMMs) were computed from the KO abundance matrix using the *GOMixer* R package [32].

### 2.5. Statistical Analyzes

Statistical analysis was performed in R v3.6.2. Taxonomic and functional features with less than  $5 \times 10^{-4}$  relative abundances in less than 20% of the samples were excluded from the statistical analysis. Associations of clinical variables with species richness and Bact2 status were tested with linear and logistic regressions, respectively, while adjusting for different confounders (age, gender, center). Linear mixed-effect models LMM was used to test for differences in taxonomic and functional features between baseline and 10% weight loss with an individual as a random factor. This was carried out separately for LMP consumers and LMP non-consumers (Supplementary Figures S8 and S9) to compare the effects of LMP supplementation on metagenomic features and by adding LMP intake as a second random factor in order to control for variability introduced by LMP intake in the temporal response of interest in each case (all follow-up cohort and follow-up cohort stratified by baseline diversity, respectively). All statistical tests used were two-tailed. All *p*-values were corrected for multiple testing as appropriate using the Benjamini–Hochberg procedure. Adjusted *p* values < 0.05 were reported as significant. The Kruskal–Wallis test with post hoc Dunn test was used to test for differences between taxonomic and functional metagenomic features across enterotypes. Chi-square test and Kruskal–Wallis test were used to test for differences between categorical and clinical variables respectively across enterotypes. Clinical differences between LMP consumer and non-consumer groups on baseline were evaluated with Student’s *t*-test for continuous data and chi-square tests or Fisher’s exact tests for categorical data. Clinical differences at 10% weight loss were evaluated with paired Student’s *t*-tests.

The propensity scores method [33] was used to define equally-sized groups of LMP consumers and non-consumers (*n* = 47 individuals per group) matched by age, gender, and weight with the *Matching* R package [34].

### 3. Results

#### 3.1. Clinical and Biological Variables of the Studied Population

A total of 208 women and 55 men participated in the GutInside real-world weight loss intervention study. The average participant age was 50 years old with subjects in the following BMI categories: Four subjects with BMI = 25 kg/m<sup>2</sup>, 74 subjects with 25 < BMI ≤ 30 kg/m<sup>2</sup>, 112 subjects with 30 < BMI ≤ 35 kg/m<sup>2</sup> and 73 with a BMI > 35 kg/m<sup>2</sup>. The time needed to achieve the 10% weight loss target ranged from 27 to 180 days. Of the 263 individuals participating in the study, 188 consumed the LMP supplementation (consumers) while 75 followed the program without any supplementation (non-consumers). Baseline parameters of all participants are shown in Table 1. Except for fasting blood glucose and gamma glutamyl-transpeptidase (GGT), there were no statistically significant differences between the two groups for baseline clinical parameters (Table 1).

**Table 1.** Clinical parameters of the studied cohort of 263 subjects at baseline.

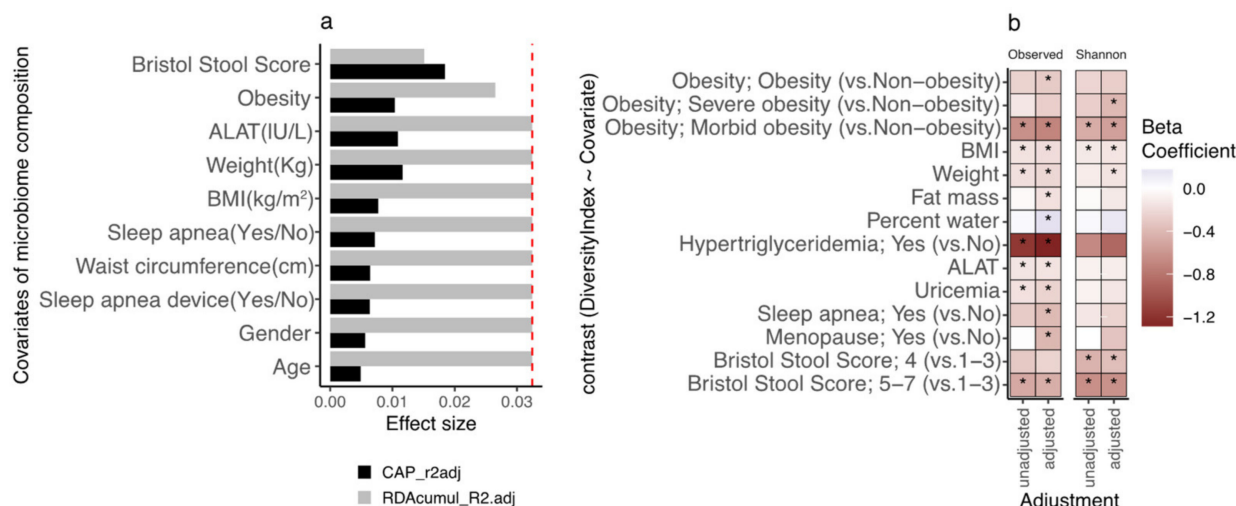
Clinical Parameters	All	No LMP	LMP	<i>p</i> -Value
Sample size, <i>n</i> (%)	263 (100.0)	75 (28.5)	188 (71.5)	-
Age (years)	50.6 (9.9)	50.8 (10.1)	50.5 (9.8)	ns
Sex (male), <i>n</i> (%)	55 (20.9)	21 (28.0)	34 (18.1)	ns
Height (cm)	165.8 (7.9)	167.2 (8.4)	165.3 (7.7)	ns
<b>Adiposity markers</b>				
Weight (kg)	90.5 (16.3)	93.1 (18.4)	89.4 (15.3)	ns
BMI (kg/m <sup>2</sup> )	32.8 (4.9)	33.2 (5.4)	32.7 (4.8)	ns
Waist circumference (cm)	106.5 (12.4)	107.9 (13.4)	106.0 (12.0)	ns
Fat mass (%)	40.7 (4.7)	40.3 (4.7)	40.9 (4.8)	ns
Fat-free mass (%)	32.0 (7.5)	30.8 (5.6)	32.0 (8.1)	ns
Calculated Basal metabolism (Kcal/day)	2217 (317)	2281 (363)	2192 (294)	ns
<b>Plasma Glucose homeostasis</b>				
Glycemia (g/L)	1.02 (0.22)	1.06 (0.23)	1.01 (0.21)	*
Insulinemia (mIU/L)	14.9 (8.7)	16.6 (10.2)	14.3 (8.0)	ns
HOMA IR	4.1 (3.1)	4.9 (4.1)	3.5 (2.7)	ns
HbA1c (%)	5.8 (0.9)	6.0 (0.9)	5.8 (0.9)	ns
<b>Plasma lipid homeostasis</b>				
Total cholesterol (nmol/L)	5.5 (1.1)	5.6 (1.0)	5.5 (1.1)	ns
Total triglycerides (nmol/L)	1.6 (0.9)	1.7 (1.2)	1.5 (0.8)	ns
HDL cholesterol (nmol/L)	1.4 (0.4)	1.4 (0.4)	1.4 (0.4)	ns
LDL cholesterol (nmol/L)	3.4 (1.0)	3.5 (0.8)	3.4 (1.1)	ns
<b>Liver Enzymes</b>				
ASAT (IU/L)	24.0 (10.0)	24.0 (9.7)	24.0 (10.2)	ns
ALAT (IU/L)	30.2 (18.3)	33.1 (20.7)	29.1 (17.1)	ns
GGT (IU/L)	41.0 (40.9)	54.3 (50.1)	36.0 (36.0)	*
<b>Other variables</b>				
Creatinine (mg/L)	8.1 (1.5)	8.1 (1.6)	8.1 (1.5)	ns
Uricemia (mg/L)	52.1 (16.3)	55.1 (11.3)	51.0 (17.6)	ns
SAS (Yes), <i>n</i> (%)	37 (14.1)	10 (13.3)	27 (14.4)	ns

Results are expressed as the mean (SD) for continuous data and *n* (%) for categorical data. *p* values result from Student's *t* test for continuous data and Chi2 or Fisher's exact test for categorical data between the two groups. BMI: Body Mass Index; HOMA-IR: Homeostatic Model Assessment of Insulin Resistance. ASAT: aspartate transaminase; ALAT: alanine transaminase; GGT: gamma glutamyl-transpeptidase, HDL cholesterol: high density lipoprotein, LDL cholesterol: low density lipoprotein, SAS: Sleep Apnea Syndrome; Basal metabolic rate was calculated using Black formula; ns = *p*-value > 0.05; \* = *p*-value ≤ 0.05.

#### 3.2. Participants' Gut Microbial Composition, the Bact2 Enterotype, and Metabolic Profile at Baseline

We examined the relationship between clinical and biological variables and fecal microbiota composition at baseline (i.e., before the dietary program) using a univariate dbRDA with all variables (*n* = 45) and then a multivariate model building an or-

diR2 function with a minimal number of variables. Across the 45 clinical and biological variables examined, 10 showed a significant link with microbiome composition in univariate dbRDA ( $p$ -value < 0.05; Figure 1a). In this effect size analysis, Bristol Stool Score (BSS) explained the largest part of the variance of genus-level microbiome composition ( $R^2 = 1.84\%$ ,  $p$ -value = 0.003), followed by bodyweight ( $R^2 = 1.16\%$ ,  $p$ -value = 0.001), alanine-aminotransferase levels (ALAT,  $R^2 = 1.08\%$ ,  $p$ -value = 0.003) and obesity status ( $R^2 = 1.03\%$ ,  $p$ -value = 0.003). Only BSS, ALAT and obesity status were found to explain a non-redundant fraction of microbiome variation based on stepwise dbRDA analysis ( $R^2 = 1.51\%$  ( $p$ -value = 0.006), 1.14% ( $p$ -value = 0.07), 0.59% ( $p$ -value = 0.06), respectively; Figure 1a).



**Figure 1.** Links between clinical covariates, microbiome composition, and microbiome diversity on the GutInside baseline cohort ( $n = 263$ ). (a) Variables explaining the microbiome compositional variation (distance-based redundancy analyzes, dbRDA; genus-level Bray–Curtis dissimilarity), either independently (univariate effect sizes in black; features with  $p$ -value < 0.05 in dbRDA) or in a multivariate model (cumulative effect sizes in grey). The cut-off for significant non-redundant contribution to the multivariate model is represented by the red line ( $p$ -value < 0.05 in stepwise model building). (b) Heatmap of beta-coefficients product of linear regression of species richness and Shannon evenness (dependent variable) vs. clinical covariates (dependent variable; y-axis) under unadjusted and adjusted design by age, gender, and center of recruitment (x-axis). Only significant contrasts are included in the figure (\* =  $p$ -value < 0.05; Obesity: 4-level variable based on BMI ranges < 30 (non-obesity),  $30 \leq \text{BMI} < 35$  (obesity);  $35 \leq \text{BMI} < 40$  (severe obesity);  $\text{BMI} \geq 40$  (Morbid obesity)).

We found a negative association between observed bacterial species (microbial diversity) and stool moisture as assessed by the Bristol stool score (Figure 1b,  $p$ -value =  $8.62 \times 10^{-3}$ , beta =  $-0.49$ ), which is in agreement with previous findings in other populations [13,14]. Negative associations with microbial diversity were also found for corpulence variables which included bodyweight ( $p$ -value =  $3.78 \times 10^{-3}$ ), BMI ( $p$ -value =  $7.51 \times 10^{-3}$ ; beta =  $-0.16$ ) and severe obesity ( $p$ -value =  $5.5 \times 10^{-3}$ ; beta =  $-0.63$  morbid obesity vs. non-obese status), as well as with uricemia ( $p$ -value = 0.033; beta =  $-0.16$ ) and ALAT ( $p$ -value = 0.025; beta =  $-0.15$ ) (Figure 1b). Controlling for age and recruiting centers did not change the nature of these associations (Figure 1b) but revealed additional associations between decreased species richness with fat mass ( $p$ -value = 0.018; beta =  $-0.17$ ), obese status ( $p$ -value = 0.042; beta =  $-0.29$  Obese vs. Non-obese status) or sleep apnea ( $p$ -value = 0.036; beta =  $-0.39$ ). Similar associations were observed with evenness index (Shannon index; Figure 1b).

We next performed enterotyping on abundance profiles at the genus level using DMM models [30], which allowed us to group samples by microbial composition simi-

larity. This approach uncovered an optimal stratification of four genus-level enterotypes (Supplementary Figure S1a,b) characterized by an abundance of *Faecalibacterium* genera of the *Ruminococcaceae* family (Rum), *Bacteroides* genus in groups *Bacteroides* 1 (Bact1) and *Bacteroides* 2 (Bact2) and *Bifidobacterium* genus (Bif) (Supplementary Figure S1c–e). This stratification of four groups reproduces previous studies [13,14,30]. However, in the present cohort, one of the enterotypes was enriched in *Bifidobacterium* instead of *Prevotella* lineages (Supplementary Figure S1e). Species richness and evenness differed across the four enterotypes. Importantly, the Bact2 enterotype, a composition characterized by the highest levels of *Bacteroides* genus abundances (Supplementary Figure S1c) showed the lowest levels of species richness and evenness (Supplementary Figure S1f,g) which confirms the dysbiotic characteristic of this microbiome composition, in agreement with previous studies [13,14]. In contrast, Rum composition, characterized by the highest levels of *Faecalibacterium* genera (Supplementary Figure S1d) shows the highest levels of species richness among the four microbiome compositions (Supplementary Figure S1f), but this is not translated to high levels of species evenness (Supplementary Figure S1g).

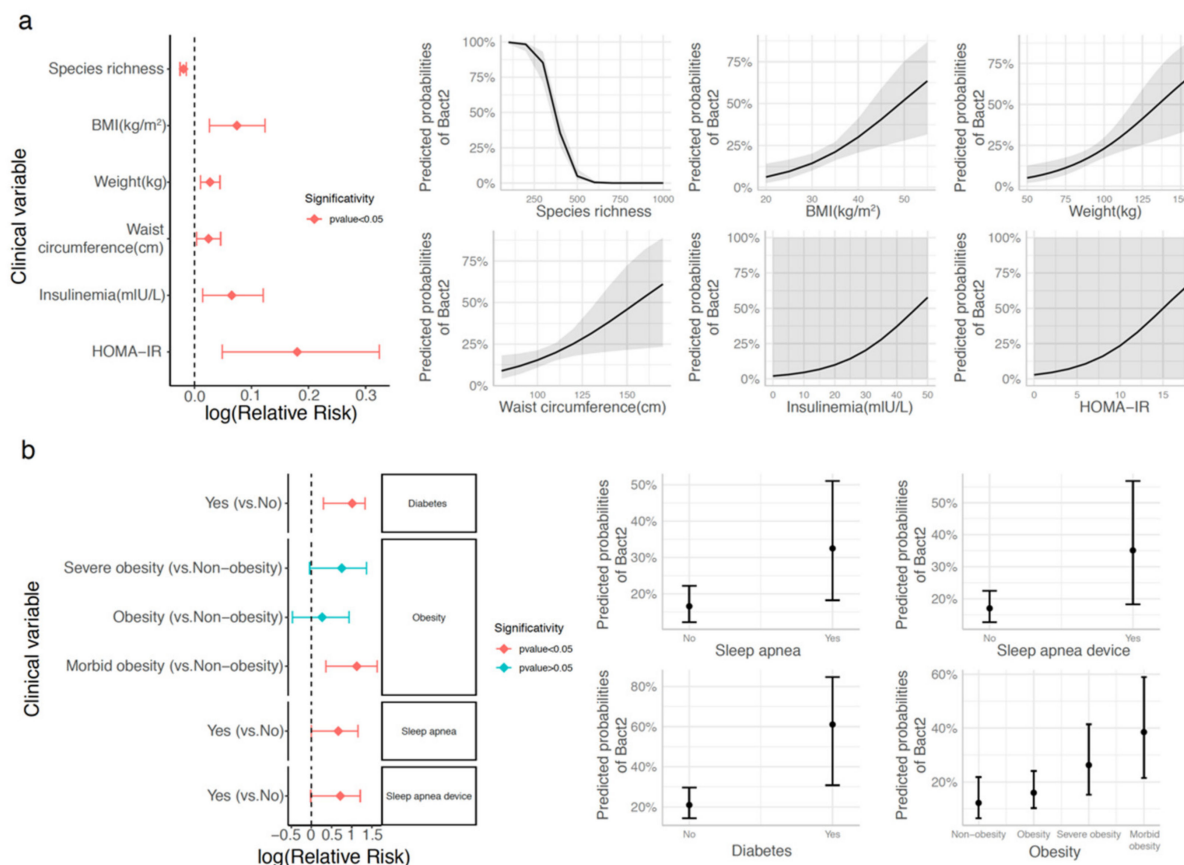
Univariate analyses over clinical and demographic covariates showed significant associations of enterotype composition with age and gender, with *Bifidobacterium* composition being younger (Supplementary Figure S2a;  $p$ -value < 0.05) and enriched in women (Supplementary Figure S2b;  $p$ -value < 0.05). Enterotype composition was also associated with corpulence variables such as obesity status, weight, BMI, and waist circumference (Supplementary Figure S2c–f), as well as ALAT and the prescription of Sleep apnea device (Supplementary Figure S2g–h), showing that Bact2 composition associates with a worst clinical profile in all cases.

This was confirmed in a logistic regression framework controlling for confounding variables, where we found that the prevalence of low microbial diversity was the highest in the Bact2 enterotype (Figure 2a; binomial logistic regression adjusted by age, gender, and center of recruitment;  $p$ -value =  $4.06 \times 10^{-12}$ ; relative risk = 0.98, where relative risk can be interpreted as the scale factor necessary to obtain the prevalence of the Bact2 enterotype after a unit increase in species richness). Further analysis of the clinical variables showed that the Bact2 group had a more severe metabolic phenotype. The prevalence of the Bact2 enterotype increased with BMI ( $p$ -value =  $2.7 \times 10^{-3}$ ; relative risk = 1.08), weight ( $p$ -value =  $1.51 \times 10^{-3}$ ; relative risk = 1.03) and waist circumference ( $p$ -value = 0.02; relative risk = 1.02), as well as with insulin resistance ( $p$ -value = 0.011; relative risk = 1.19) and fasting insulin ( $p$ -value = 0.01; relative risk = 1.07). The Bact2 enterotype was also more prevalent in obese subjects with BMI  $\geq 35$  kg/m<sup>2</sup> ( $p$ -value =  $6.38 \times 10^{-3}$ ; relative risk = 3.08), subjects with sleep apnea ( $p$ -value = 0.047; relative risk = 1.95), or subjects using a continuous positive airway pressure (CPAP) device ( $n = 25$ ), compared to untreated subjects ( $n = 12$ ) ( $p$ -value = 0.047; relative risk = 2.05) (Figure 2b). Despite methodological differences, these findings confirm previous observations made in the European MetaCardis cohort, where a relative risk of 1.05 was reported for the association between Bact2 status and BMI, confirming the links between Bact2 enterotype and aggravated obesity and comorbidities [14]. Finally, similar results were observed when the enterotyping procedure was carried out from species-level abundance data in terms of best stratification of the community around 4 discrete compositions (Supplementary Figure S3a), including a dysbiotic microbiome composition with low levels of species richness that correspond to Bact2 samples characterized by enterotyping at the genus level (Supplementary Figure S3b,c) and associated with a worse clinical profile (Supplementary Figure S3d).

### 3.3. *Bacteroides* 2 Enterotype, Taxonomy, and Functional Features and Obesity Severity

We examined quantitative taxonomic and functional characteristics of the metagenomic features associated with Bact2 microbiome composition. We found an enrichment of 8 bacterial species (Figure 3a; FDR < 0.05 in pairwise comparisons of Bact2 vs. all other enterotypes) including *Bacteroides fragilis* (FDR =  $6.14 \times 10^{-16}$ ) and *Bacteroides vulgatus* (FDR =  $1.58 \times 10^{-13}$ ). We observed that the Bact2 enterotype showed the lowest abun-

dance of *F. prausnitzii* ( $\text{FDR} = 2.43 \times 10^{-25}$ ). At the functional level, the Bact2 composition was enriched in 12 functional modules (Figure 3b;  $\text{FDR} < 0.05$  in pairwise comparisons of Bact2 vs. all other enterotypes). Several of the functional modules were related to amino acid degradation, central metabolism, and degradation of carbohydrates. When put in relation with clinical variables, we observed positive significant associations between Bact2-enriched taxonomic and functional features and BMI that was robust to different covariate adjustments (Figure 3c,d;  $\text{FDR} < 0.05$ , standardized beta-coefficient  $> 0$ ; linear regression models of feature abundance  $\sim \text{BMI} + \text{additional covariates}$ ). Overall, bacterial signatures and functional characteristics linked to the Bact2 enterotype were also associated with obesity severity.

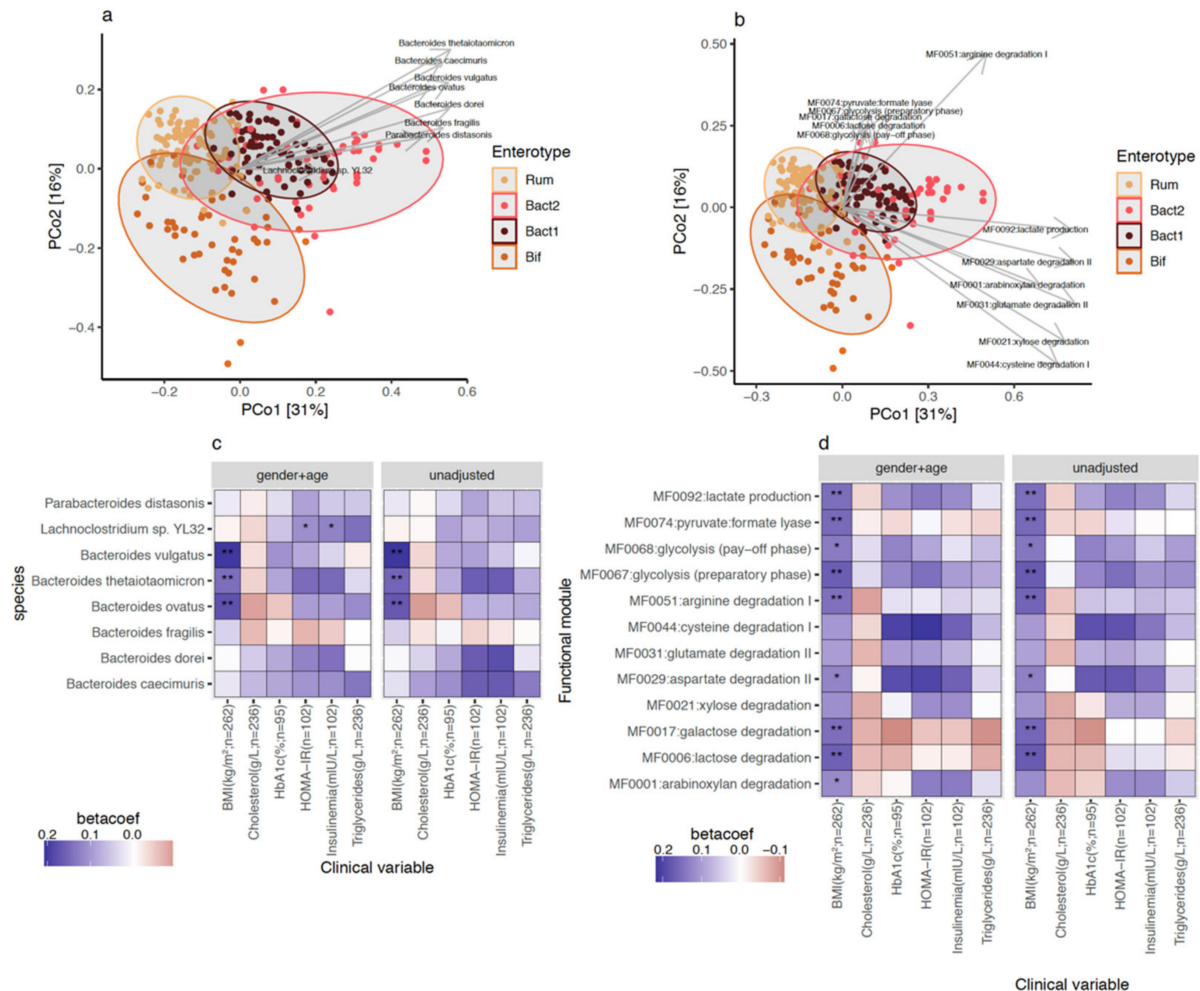


**Figure 2.** Association between Bact2 enterotype and clinical covariates in the GutInside baseline cohort ( $n = 263$ ). Clinical covariates with significant association with Bact2 status over baseline cohort based on logistic regression analyses adjusted by age, gender, and center of recruitment. Results are represented as relative risk score intervals of Bact2 status (left side plots) for numerical (a) and categorical variables (b) with significant associations ( $p$ -value  $< 0.05$ ). Panels on the right represent the predicted probability of Bact2 status based on logistic regression models of each clinical covariate in relative risk score panels ( $p$ -value  $< 0.05$ ; adjusted by age, gender, and center of recruitment; Obesity =  $30 \leq \text{BMI} < 35$ ; Severe obesity =  $35 \leq \text{BMI} < 40$ ; Morbid Obesity =  $\text{BMI} \geq 40$ ; non-obesity =  $\text{BMI} < 30$ ).

### 3.4. Gut Microbiota Diversity Evolution during Weight Loss Is Influenced by Baseline Gut Microbiome Diversity

For most subjects (84%), 10% weight loss was achieved during the calorie-restrictive weight loss phase 1, with a median duration of 75 days. Analyses were focused on the 163 subjects with paired stool sampling at the start of the calorie restriction and at 10% weight loss. Table 2 shows the changes in clinical and biological variables after 10% weight loss. As expected, the dietary intervention led to significant improvements in bodyweight, waist circumference, fat mass, and biological variables (fasting blood glucose, cholesterol, HbA1c,

ALAT, GGT) compared to baseline. No significant differences were observed between the individuals based on LMP supplement intake (i.e., consumers and non-consumers groups) (Supplementary Table S1). The first set of analysis was then performed grouping both groups or examining LMP supplement consumers vs. non-consumers.



**Figure 3.** Taxonomic and functional features enriched in Bact2 microbiome composition and association with clinical variables on GutInside baseline cohort ( $n = 263$ ). Principal coordinate analyses (PCoA) of 263 individuals of GutInside cohort colored by microbiome enterotypes with abundance vectors of bacterial species (a) and functional modules (b) enriched in Bact2 microbiome composition (FDR < 0.05, Kruskal–Wallis test of microbiome enterotypes vs. feature abundance; Cliff’s delta effect size > 0 in pairwise comparisons of feature abundance in Bact2 samples vs. samples from other 3 enterotypes) fitted on the ordination plot. (c) Heatmap of standardized beta-coefficients showing the associations between the abundance of the 8 bacterial species enriched in Bact2 microbiome composition and clinical variables in 263 individuals of the GutInside baseline cohort based on linear regression models adjusted by different cofounding variables (\* =  $p$ -value < 0.05; \*\* = FRD < 0.05; linear regression models of each bacterial specie (y-axis) vs. clinical variables (x-axis) adjusted by cofounding variables in the top of each facet). (d) Same as (c) with the 12 functional modules enriched in Bact2 microbiome composition.

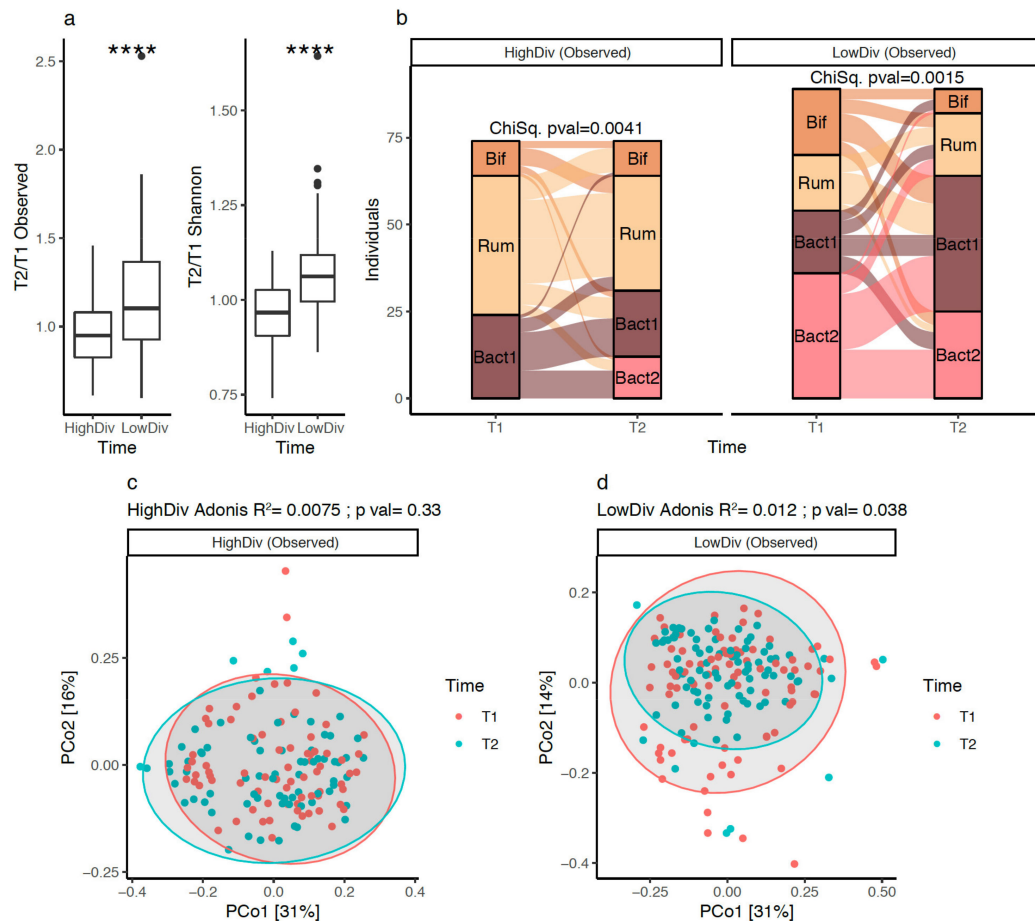
**Table 2.** Clinical parameters of the studied cohort of 163 subjects before and after weight loss.

Clinical Parameters	Before Weight Loss	After Weight Loss (-10%)	<i>p</i> -Value
Sample size, <i>n</i> (%)	163 (100.0)	-	-
Age (years)	50.8 (10.1)	-	-
Sex (male), <i>n</i> (%)	31 (19.0)	-	-
Height (cm)	165.4 (7.8)	-	-
SAS (Yes), <i>n</i> (%)	25 (15.3)	-	-
<b>Adiposity markers</b>			
Weight (kg)	90.4 (16.1)	80.4 (14.4)	****
BMI (kg/m <sup>2</sup> )	33.0 (4.9)	29.3 (4.4)	****
Waist circumference (cm)	106.9 (12.5)	96.3 (11.7)	****
Fat mass (%)	40.8 (4.4)	37.7 (5.0)	****
Fat-free mass (%)	32.5 (8.3)	33.2 (7.6)	****
Calculated Basal metabolism (Kcal/day)	2195 (306)	2080 (295)	****
<b>Plasma Glucose homeostasis</b>			
Glycemia (g/L)	1.03 (0.20)	0.97 (0.12)	***
Insulinemia (mIU/L)	14.0 (7.6)	10.2 (6.3)	**
HOMA IR	4.3 (3.7)	2.5 (1.9)	*
HbA1c (%)	6.2 (1.1)	5.6 (0.7)	**
<b>Plasma lipid homeostasis</b>			
Total cholesterol (nmol/L)	5.7 (1.0)	5.1 (1.0)	****
Total triglycerides (nmol/L)	1.6 (0.8)	1.1 (0.5)	****
HDL cholesterol (nmol/L)	1.4 (0.4)	1.4 (0.4)	ns
LDL cholesterol (nmol/L)	3.5 (0.9)	3.2 (0.8)	****
<b>Liver Enzymes</b>			
ASAT (IU/L)	23.8 (8.5)	21.9 (7.6)	**
ALAT (IU/L)	30.0 (18.0)	24.6 (12.1)	**
GGT (IU/L)	50.3 (53.4)	34.3 (42.2)	**
<b>Other variables</b>			
Creatinine (mg/L)	8.4 (1.5)	8.3 (1.4)	ns
Uricemia (mg/L)	53.0 (16.0)	49.8 (15.1)	**

Results are expressed as mean (SD) for continuous data and *n* (%) for categorical data. *p* values result from Student's *t*-test paired. BMI: Body Mass Index; HOMA-IR: Homeostatic Model Assessment of Insulin Resistance. ASAT: aspartate transaminase; ALAT: alanine transaminase; GGT: gamma glutamyl-transpeptidase, HDL cholesterol: high density lipoprotein, LDL cholesterol: low density lipoprotein, SAS: Sleep Apnea Syndrome; basal metabolic rate was calculated using Black formula; ns = *p*-value > 0.05; \* = *p*-value ≤ 0.05; \*\* = *p*-value ≤ 0.01; \*\*\* = *p*-value ≤ 0.001; \*\*\*\* = *p*-value ≤ 0.0001.

In the whole cohort, no significant evolution of microbiome diversity was observed after 10% weight loss (univariate test, *p*-value = 0.1). However, previous studies with lifestyle or surgical weight-loss interventions showed that such an evolution might be related to baseline microbiome diversity [6,9,19]. This motivated us to stratify our cohort based on the baseline diversity: we used the median bacterial species richness (490 observed species) as a threshold to group subjects into “high” (*N* = 74) and “low” (*N* = 89) diversity groups. When comparing gut microbiome diversity evolution between groups during the intervention, subjects from the low-diversity group exhibited significantly higher improvements of their microbiome diversity compared to subjects from the high-diversity group (Figure 4a; *p*-value =  $1.35 \times 10^{-6}$  on a comparison of species richness fold-change between baseline and 10% weight loss). Similar dynamics of diversity changes were observed with evenness indexes (Shannon index; Figure 4a). In addition, we observed that baseline low-diversity subjects had significantly higher levels of hepatic transaminases ALAT and ASAT (Supplementary Figure S4a,b), softer stools (Supplementary Figure S4d), and a trend towards higher weight than subjects in the high-diversity group (*p*-value = 0.073, Supplementary Figure S4e). We confirm that stratifying by baseline GM diversity led to different changes in diversity during a weight loss intervention. Given the link between

the Bact2 enterotype and low microbiome diversity, this finding prompted us to address the effect of baseline diversity on the potential of an enterotype switch of the subjects at 10% weight loss.



**Figure 4.** Evolution of microbiome diversity and composition at 10% weight loss in 163 individuals of GutInside study (follow-up cohort): (a) Boxplots of species richness and Shannon evenness fold changes distributions (10% weight loss vs. baseline; y-axis) between high and low diversity groups defined from the median of the entire baseline population ( $n = 263$  individuals; 490 species). \*\*\*\* =  $p$ -value < 0.001; Wilcoxon signed-rank test). (b) Alluvial plots showing the evolution of enterotype composition of 163 individuals of the follow-up cohort (y-axis) between baseline (T1) and 10% weight loss (T2; x-axis) stratified by the baseline microbiome diversity of individuals (high vs. low diversity based on species richness index).  $p$ -value of Chi-Square test individuals within each diversity group showed in the top of each plot. (c) PCoA (genus-level Bray–Curtis beta-diversity) of inter-sample composition of 74 individuals in the High-diversity group between baseline (T1) and 10% weight loss (T2). Results of the PERMANOVA test to evaluate the impact of dietary intervention on microbiome composition shown on the top of the plot. (d) PCoA (genus-level Bray–Curtis beta-diversity) of inter-sample composition of 89 individuals in the Low-diversity group between baseline (T1) and 10% weight loss (T2). Results of the PERMANOVA test to evaluate the impact of dietary intervention on microbiome composition shown on the top of the plot.

### 3.5. *Bacteroides* 2 Prevalence after Weight-Loss

In the high-diversity group, we observed significant changes in enterotype composition at 10% weight loss ( $p$ -value = 0.0041). Noteworthy, 12 individuals of this group ended up switching to Bact2 at 10% weight loss (Figure 4b). However, no significant change in overall microbiome composition at 10% weight loss was observed (Figure 4c;  $R^2 = 0.75\%$ ,  $p$ -value = 0.33, based on genus-level relative abundance profiles). An evaluation of the clin-

ical changes in the 12 individuals that switched to Bact2 showed an increase in their blood uricemia, which contrasted with the other individuals of the high-diversity baseline group that predominantly exhibited a decrease in uricemia with weight loss ( $p$ -value = 0.033 Supplementary Figure S5a).

In the low-diversity group, we also observed significant changes in enterotype composition (Figure 4b,  $p$ -value = 0.0015) but with a different pattern. The overall microbiome composition was significantly altered after the intervention (Figure 4d;  $R^2 = 1.2\%$ ,  $p$ -value = 0.041, Permanova based on genus-level relative abundance profiles). Weight loss led to significant changes in enterotype composition that mainly switched to Bact1 from Bif, Rum, and Bact2 compositions. As a result, Bact1 prevalence increased from 20% at baseline to 43% after 10% weight loss (Figure 4b). The prevalence of Bact2 decreased from 40% to 28% (Figure 4b) with 16/36 (44%) Bact2 individuals switching to Bact1 and 14/36 (39%) individuals remaining in the Bact2 group.

Overall, 25 of the 89 individuals in the low-diversity group were characterized by the Bact2 enterotype at 10% weight loss (Figure 4b). No change in uricemia was seen in this group. However, while they showed an improvement in glycemic status at 10% weight loss in comparison with non-Bact2 low-diversity individuals (Supplementary Figure S5b;  $p$ -value = 0.0024), (Supplementary Figure S5c), they remained with significantly higher levels of HbA1C compared with non-Bact2 individuals (Supplementary Figure S5d,  $p$ -value = 0.022) after weight loss. This again illustrates how the Bact2 microbial composition is associated with a deleterious metabolic status.

In summary, low microbiome-diversity individuals with baseline enrichment in Bact2 microbiome composition showed better improvement of their microbiome diversity, mainly by switching towards the Bact1 enterotype after a calorie restriction intervention. Changes were limited in the high-diversity group.

### 3.6. Bacterial Species after Weight Loss; Different Pattern with Diversity Stratification

Next, we examined the changes in individual bacterial species after weight loss. The abundance of 13 microbial species showed significant changes in abundance after 10% weight loss (Supplementary Figure S6a, FDR < 0.05, linear mixed effects models of feature abundance by intervention time, with patient and LMP supplementation intake as random factors). Among species that increased in abundance (beta-coefficients > 0 in Supplementary Figure S6a), *Akkermansia muciniphila* increased the most (beta-coefficient = 0.03, FDR =  $5.62 \times 10^{-4}$ ), followed by *Parabacteroides distasonis* (beta-coefficient = 0.025, FDR =  $7.23 \times 10^{-3}$ ), *Methanobrevibacter smithii* (beta-coefficient = 0.013, FDR = 0.02), and *Intestinimonas butyriproducens* (beta-coefficient =  $8.99 \times 10^{-3}$ , FDR = 0.026). Among species decreasing in abundance, *Eubacterium rectale* decreased the most (beta-coefficient =  $-0.042$ , FDR =  $1.42 \times 10^{-4}$ ), followed by actinobacterial lineages such as *Bifidobacterium adolescentis* (beta-coefficient =  $-0.023$ , FDR = 0.036) or *Bifidobacterium bifidum* (beta-coefficient =  $-0.014$ , FDR = 0.02), and firmicutes lineages such as *Streptococcus thermophilus* (beta-coefficient =  $-0.023$ , FDR =  $1.42 \times 10^{-4}$ ) or *Streptococcus salivarius* (beta-coefficient =  $-0.012$ , FDR =  $8.93 \times 10^{-3}$ ).

On the functional level, the abundance of 16 gut metagenomic modules (GMMs) significantly changed after 10% weight loss (Supplementary Figure S6b; FDR < 0.05, linear mixed effects models of feature abundance by intervention time, with patient and LMP supplementation intake as random factors). GMMs increasing in abundance were acetate to acetyl-CoA conversion (beta-coefficient = 0.0036, FDR = 0.038), rhamnose and mannose degradation (beta-coefficient =  $2.9 \times 10^{-3}$ ,  $2.8 \times 10^{-3}$ , FDR = 0.031, 0.018 respectively), and modules involved in methanogenesis that can be linked to methanogenic archaeon *M. smithii* (Supplementary Figure S6a,b). GMMs decreasing in abundance were linked to cysteine biosynthesis (beta-coefficient =  $-4.15 \times 10^{-3}$ , FDR = 0.25), sulfate reduction (beta-coefficient =  $-4.05 \times 10^{-3}$ , FDR = 0.039), degradation of fibers such as fructan and starch (beta-coefficient =  $-3.62 \times 10^{-3}$ ,  $-3.08 \times 10^{-3}$ , FDR = 0.019,  $7.86 \times 10^{-2}$ , respectively), and butyrate production (beta-coefficient =  $-2.72 \times 10^{-3}$ , FDR = 0.039).

When examining individuals stratified as having low or high baseline diversity, the high-diversity group only showed significant increases in *P. distasonis* (Supplementary Figure S7a; FDR < 0.05; linear mixed effects models of feature abundance by intervention time, with patient and LMP supplementation intake as random factors). In contrast, in the low-diversity group, the abundance of 15 microbial species was significantly affected by the 10% weight loss (Supplementary Figure S7b, FDR < 0.05). Most of them ( $N = 11$ ) increased in abundance, including *A. muciniphila* (beta-coefficient = 0.036, FDR =  $6.36 \times 10^{-4}$ ), *M. smithii* (beta-coefficient = 0.018; FDR =  $5.85 \times 10^{-3}$ ) or *Intestinimonas butyriciproducens* (beta-coefficient = 0.018, FDR =  $2.38 \times 10^{-3}$ ) as the species with the highest effect sizes, whereas a decrease was observed for *E. rectale* (beta-coefficient =  $-0.049$ ; FDR = 0.01), *S. thermophilus* (beta-coefficient =  $-0.028$ , FDR =  $8.27 \times 10^{-3}$ ), and bifidobacterial lineages such as *B. adolescentis* (beta-coefficient =  $-0.042$ , FDR = 0.01) and *B. bifidum* (beta-coefficient =  $-0.021$ , FDR = 0.016) (Supplementary Figure S7b).

In both low and high diversity groups, the species with the highest effect sizes (e.g. *A. muciniphila* and *P. distasonis* for species increasing in abundance and *E. rectale* and *S. thermophilus* for species decreasing in abundance) shifted in the same direction at 10% weight loss, with significant changes observed in the group showing the highest effect sizes (p.ex. *A. muciniphila* = FDR < 0.05 in low-diversity group only; beta-coefficient 10% weight loss vs. Baseline = 0.036 (Low-diversity group), 0.023 (high-diversity group); feature in upper-right corner of Supplementary Figure S7c). However, 50% of the microbial species showed specific increases at 10% weight loss in the low diversity group, including the specific increase of eight microbial species (Supplementary Figure S7c, FDR < 0.05 and beta-coefficient > 0 in low diversity group, FDR > 0.05 and beta-coefficient < 0 in the high diversity group), suggesting an overall high impact of dietary intervention in subjects with baseline dysbiosis.

Focusing on the eight species associated with the dysbiotic Bact2 composition at baseline (Figure 3), *P. distasonis* significantly increased after 10% weight loss in both high and low diversity groups, whereas *B. dorei* showed significant increases specifically in the high-diversity group (Supplementary Figure S7c). The rest of the Bact2-associated species showed no significant changes in abundance during the intervention, although a tendency was observed towards higher decreases in the group with low diversity at baseline (Supplementary Figure S7d).

In total, individuals with low microbiome diversity at baseline exhibited the most significant changes in bacterial species compared to individuals with high microbiome diversity at baseline.

### 3.7. LMP Supplementation, Microbial Diversity and Composition, and Bacteroides 2 Prevalence

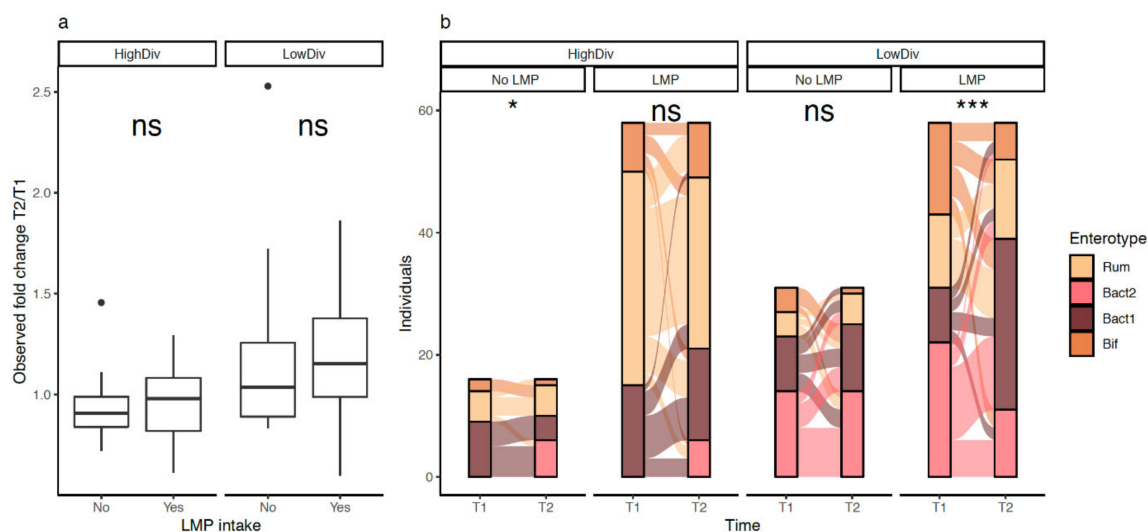
Of the 163 individuals for which metagenomics data were available at baseline and after 10% weight loss, 116 (71%) took the LMP supplement in addition to the diet intervention, whereas 47 (29%) did not. We performed the same analysis (diversity, species, functions) in regard to LMP supplementation.

LMP consumption seemed to have significant effects in the low-diversity group. While GM diversity improvements were not statistically significant in this group (Figure 5a;  $p$ -value = 0.2; comparison of species richness fold-changes after 10% weight loss), the proportion of Bact2 individuals decreased among LMP consumers (38% of Bact2 individuals at baseline versus 19% of Bact2 individuals at 10% weight loss,  $n = 58$ ,  $p$ -value =  $6.07 \times 10^{-4}$ , Figure 5b). In contrast, the enterotype composition of non-LMP consumers was not significantly altered (Figure 5b;  $n = 31$ , 45% of Bact2 individuals at baseline and after 10% weight loss  $p$ -value = 0.54).

### 3.8. LMP Supplementation, Gut Microbial Species and Functional Module in Matched Subjects

To overcome the strongly unbalanced sizes of LMP consumers ( $n = 116$ ) or LMP non-consumers ( $n = 47$ ), univariate analyses of the abundances of microbial species and functions between baseline and 10% weight loss and stratified by LMP intake were carried

out on matched sub-groups of individuals by age, gender and weight ( $n = 47$  individuals per group) by the method of propensity scores [33].



**Figure 5.** Effect of LMP supplement intake on microbiome diversity and enterotype composition across individuals of the GutInside follow-up cohort ( $n = 163$ ). **(a)** Boxplots of species richness fold changes distributions (10% weight loss vs. baseline; y-axis) between individuals taking or not the LMP supplement stratified by the baseline microbiome diversity of individuals (high vs. low diversity) (ns = non-significant). **(b)** Alluvial plots showing the evolution of enterotype composition of 163 individuals of the follow-up cohort (y-axis) between baseline (V1) and 10% weight loss (V2; x-axis) stratified by the baseline microbiome diversity of individuals (high vs. low diversity) and the intake of LMP supplement.  $p$ -value of chi-square test within each diversity group showed in the top of each plot (ns = non-significant; \* =  $p$ -value < 0.05; \*\*\* =  $p$ -value < 0.001).  $n = 16$  (HighDiv-No LMP intake),  $n = 31$  (LowDiv No LMP intake),  $n = 58$  (HighDiv-LMP intake),  $n = 58$  (LowDiv-LMP intake).

The most striking results were a higher decrease in species from the *Bacteroides* lineages such as *B. vulgatus* (beta-coefficient 10% weight loss vs. baseline =  $-0.035$  vs.  $-0.012$ ;  $p$ -value =  $0.024$  vs.  $0.31$ , in LMP consumers vs. non-consumers) or *B. fragilis* (beta-coefficient 10% weight loss vs. baseline =  $-0.015$  vs.  $1.89 \times 10^{-2}$ ;  $p$ -value =  $8.6 \times 10^{-3}$  vs.  $0.78$ , LMP consumers versus non-consumers) in LMP consumers after 10% weight loss. These decreases were accompanied by a higher increase in *F. prausnitzii* (Supplementary Figure S8a,c; beta-coefficient 10% weight loss vs. baseline =  $0.0405$  vs.  $0.012$ ;  $p$ -value =  $8.82 \times 10^{-3}$  vs.  $0.51$ , LMP consumers vs. non-consumers; linear mixed-effects models of feature abundance by intervention time with patient as a random factor).

By contrast, *E. rectale* was the species that decreased more in LMP non-consumers compared to LMP consumers (Supplementary Figure S8b,c; beta-coefficient 10% weight loss vs. baseline =  $-0.024$  vs.  $-0.045$ ;  $p$ -value =  $0.157$  vs.  $2.21 \times 10^{-3}$ , consumers vs. non-consumers). Finally, the abundance of *A. muciniphila* increased significantly in both LMP and non-LMP consumers (Supplementary Figure S8b,c).

On the functional level, LMP supplementation was also positively associated with modules involved in the degradation of carbohydrates such as fructose and rhamnose, and negatively associated with amino-acid degradation (Supplementary Figure S9a). Such associations were not found in the LMP non-consumers (Supplementary Figure S9c; beta-coefficients 10% weight loss vs. baseline < 0 in LMP consumers' group; > 0 in the non-consumers group; linear mixed-effects models of feature abundance by intervention time with patient as a random factor). However, butyrate production potential was diminished both in LMP consumers and LMP non-consumers.

Overall, in our cohort, LMP usage was linked to some improvements of the bacterial composition (e.g., less Bact2-linked species, or increased *F. prausnitzii* and potential impact on

amino acid processing). On the other hand, this calorie-restrictive diet with high protein and low carbohydrates is associated with overall increased *A. muciniphila* and a decrease in butyrate production potential independently of LMP consumption (Supplementary Figure S8a,b).

#### 4. Discussion

In a population involved in a weight management program [22], we found that individuals with obesity and overweight were stratified into four enterotypes based on gut microbiome ONT sequencing data. In these four enterotypes, we detected the Bact2 enterotype, a characteristic composition of a dysbiotic GM. This is, to our knowledge, the first time that discrete microbiome communities have been detected using this technology. At baseline, subjects from the Bact2 enterotype group displayed a lower microbiome diversity and more severe clinical profile with increased BMI and worse metabolic health markers (triglycerides, liver transaminases) compared to the other enterotypes. Interestingly, the prevalence of Bact2 was reduced at 10% weight loss during the diet intervention, but only in the group of individuals that exhibited low microbial diversity at baseline. Overall, it seems that the Bact2 profile could be an interesting target for microbiome-centered therapeutic interventions.

Given the complexity and variability of the gut microbiome, the existence of enterotypes has been a subject of controversy even though they can be linked to some clinical features. There is indeed a large inter-individual variability between subjects classified within a given enterotype [35,36]. However, several studies have reproduced the presence of enterotypes with similar compositional properties across large independent datasets from various populations or disease groups [15].

Recently, the split of *Bacteroides* groups into two subgroups, Bact1 and Bact2, showed that the latter could be linked to low GM gene richness and reduced stool microbial cell count (e.g., low bacterial biomass) [9,27]. For instance, in the European MetaCardis population [14], the prevalence of Bact2 enterotype increased with increased body mass index, and individuals in the Bact2 group had higher systemic inflammation [14]. Bact2 is also associated with inflammatory diseases such as ulcerative colitis, Crohn's disease, primary sclerosing cholangitis, depression, and multiple sclerosis subtypes [16,37,38]. Bact2 is thus viewed as a gut microbiome signature with clinical relevance, however, it was not previously characterized in the context of a weight loss or dietary intervention study setting. Here, using ONT sequencing technology that has recently been adapted to be used for microbiome sequencing [25], we found that Bact2 was successfully detected and prevalent in subjects from the French "GutInside" population (19.4% of the population). We identified Bact2-related functional modules linked to amino acid degradation, central metabolism, and degradation of carbohydrates that are in line with the increased proteolytic and saccharolytic capacity of *Bacteroides*-enriched microbiome [39].

The *Ruminococcus*-enriched enterotype (Rum) was also detected in our cohort. This enterotype is characterized by a higher level of microbial richness compared to the other enterotypes as well as the presence of *F. prausnitzii*, one of the main butyrate-producing bacteria in the human gut that is frequently depleted in diseases with a low inflammatory component [40]. Intriguingly, we did not detect the *Prevotella* enterotype [12,41–43] in our cohort; however, we instead found a *Bifidobacterium*-enriched microbiome composition (Bif), which was significantly more prevalent in the young women of our cohort. The Bif enterotype has previously been observed in individuals from Asian populations [33]. In the context of our current study, the lack of close relatives of the *Prevotella* lineages in the reference genomic database used by ONT taxonomic profiling could explain this observation. Further research with additional reference genomic databases would be needed to confirm this hypothesis.

In our study, we also confirmed that the Bact2 enterotype was associated with low gene richness and clinical characteristics including more severe obesity, increased markers of insulin resistance, and sleep apnea [32]. Inflammatory markers were not collected in this cohort thus this association from previous studies could not be examined. Moreover,

the lack of fresh stool samples due to the real-life settings of this study precluded the evaluation of the microbial cell density of the gut ecosystem, which is another main characteristic of the Bact2 composition. It is useful to emphasize that these observations are associative by nature, and further research would be needed to uncover a putative mechanistic link between the prevalence of Bact2 enterotype and the severity of patients' metabolic phenotypes. Since relationships between the gut microbiome and its host are bidirectional, it remains unclear whether the gut microbiome composition is a result or a cause of the observed metabolic features.

Dietary changes are well-known to induce compositional changes in the gut microbiome [5]. Different studies have reported beneficial effects of the Mediterranean diet, and diets rich in fibers and whole grains promote the growth of beneficial gut microbes associated with short-chain fatty acid production from carbohydrates including *Faecalibacterium prausnitzii*, *Eubacterium rectale*, or different *Bifidobacterium* lineages [44–46]. In contrast, these same lineages are depleted in diets generally lacking these bacterial substrates, including a gluten-free diet [47] and protein-rich diets with low fiber content [48–50]. Within these diets, there is also an impact of the source of dietary protein (animal, vegetal) on microbiome and metabolome profiles [51]. In our current cohort, we evaluated the compositional changes that are observed after 10% weight loss. The calorie-restricted, high-protein low carbohydrate diet in the current study was previously shown to improve subjects' metabolic conditions and to limit weight regain in a population from the European DIOGENES consortium [22]. We further confirmed here that the subjects' metabolic traits were improved, in addition to significant weight losses. Interestingly, while gut microbial diversity was not significantly affected by the intervention, significant improvements were observed in individuals with a low microbial diversity pre-intervention.

In line with the reports above on dietary substrates and gut microbiome changes, we also found a decrease in firmicutes and bifidobacterial lineages at 10% weight loss, which was parallel to functional changes in decreased fiber degradation and butyrate production capabilities. Diet-induced reduction of *E. rectale* and *Bifidobacterium* lineages, as well as a reduced butyrate production, has already been described in subjects with obesity following high protein and low carbohydrate diets as part of a weight-loss program [52,53]. Insufficient amounts of dietary fiber in the diet of our current study could also explain the decrease in *Bifidobacterium* lineages observed. It was indeed demonstrated that oligofructose (present in dietary fiber) selectively increases the gut microbiome bifidobacterial content [54]. Along this line, *S. thermophilus* is another well-known probiotic bacterium (main yogurt starter) that stimulates carbohydrate degradation in milk-based products. Thus, a low carbohydrate high protein diet may be detrimental to these probiotic strains that rely on carbohydrates for growth. While the LMP supplement in this study population contained dietary prebiotics, it was a low concentration of inulin (27.6 mg) and fructo-oligosaccharide (2.4 mg), which is not sufficient to sustain bacterial growth as observed in previous studies [55]. In fact, the administration of 16 g/day of a mixture of inulin and oligofructose for 3 months in subjects with obesity increased the abundance of *Bifidobacterium* and *F. prausnitzii*, while decreasing *B. intestinalis*, *B. vulgatus*, and *Propionibacterium* [56]. Methanogenic lineages, such as the archaeon *M. smithii*, seemed to thrive under the dietary conditions in our study, which paralleled increasing gut microbiome methanogenic capabilities.

Despite the decrease in beneficial gut bacterial lineages associated with butyrate production, we also observed a significant increase in the abundance of other beneficial gut commensals such as *A. muciniphila* and *P. distasonis*, both having been recently shown to alleviate obesity and metabolic dysfunctions in mice [57]. *A. muciniphila* has been further associated with metabolic health status including better glucose homeostasis, blood lipid profile, and body composition after calorie restriction [58]. In fact, *A. muciniphila* has been extensively studied in mouse and human gut microbiomes and is a next-generation probiotic candidate with both proof-of-concept and clinical studies supporting its effectiveness [59]. In addition, *P. distasonis* has been successfully shown to be beneficial in decreasing weight gain, hyperglycemia, and hepatic steatosis in *ob/ob* and high-fat-fed

mice [57]. However, it is unclear though whether the changes observed in our setting can contribute to weight loss and metabolic improvements. Moreover, it cannot be excluded that those changes are simply related to the higher consumption of proteins during the weight-loss intervention. In a recent paper, Bel Lassen and al. [60] examined the associations between protein intake and gut microbiome composition in two cross-sectional populations from the Netherlands and France and found that *P. distasonis* and *F. prausnitzii* abundance was positively associated with protein consumption.

The Bact2 enterotype is tightly linked to low diversity and we have previously shown in three independent studies that changes in gut microbiome diversity after a dietary or surgically-induced weight loss are affected by baseline gut microbiome diversity (i.e., pre intervention) [6,9,61]. Specifically, we have found that low-diversity subjects exhibit the most potential for gut microbiota diversity improvements, and these results prompted us to examine the relevance of such a baseline stratification in the GutInside cohort [6,9]. We confirmed the significant increase in gut microbiome diversity in subjects starting from a low diversity (below the cohort median) at baseline. We also demonstrated a significant decrease in Bact2 frequency after weight loss in this group when individuals were using the LMP supplement. No such improvement of Bact2 prevalence was found for individuals not consuming the LMP supplement, even though they significantly improved their gut microbiome diversity. In addition, LMP consumers exhibited a higher increase in *F. prausnitzii* and a lower decrease in *E. rectale* compared to their LMP non-consumer counterparts at 10% weight loss.

In contrast to individuals with low microbial diversity at baseline, we found that subjects with a high diversity (above the cohort median) exhibited a significant decrease in their gut microbiome diversity at 10% weight loss. Surprisingly, 12 subjects from this group started in Bact1 at baseline and switched to the Bact2 enterotype after 10% weight loss. This was associated with an increase in circulating uric acid when compared to those who remained Bact1 after weight loss. We can only speculate that this association may be due to specific food consumption or deviation from the proposed program. For example, high intakes of purine-rich red meat and seafood increase uric acid concentration, which has been described as a risk factor for metabolic syndrome and its components [62] which, in turn, may be associated with worse gut microbiome health. In this context, it is worth noticing that a decrease in gut microbiome diversity in parallel with improvements in metabolic health status has been previously observed in a fiber-rich dietary intervention [63]. So even if high diversity is generally considered as a feature of a healthy gut microbiome, there are exceptions that stimulate the need to identify additional and better signatures of a dysbiosis, such as the Bact2 composition described here and in other studies.

Unlike other studies that used probiotic supplements [64], we were unable to directly detect the bacterial species of the LMP supplement in the stools of individuals. This could be explained by the low concentration of the bacterial strains used. This could also be due to the low carbohydrate content of the weight loss intervention diet, which inhibits growth for probiotic bacteria, such as *Bifidobacteria*.

## 5. Conclusions

In this real-world weight management program, a high-protein, low-carbohydrate diet led to significant improvements in gut microbiome diversity and composition, with reduced Bact2 prevalence, albeit mostly in subjects with low diversity at baseline. The interest in using prebiotic, probiotic, or synbiotic supplementation to improve dysbiosis remains to be demonstrated through randomized studies. Finally, this study paves the way for future examinations of the Bact2 dysbiosis-related signature and could drive future personalized nutrition efforts to orient the microbiome towards a more favorable community composition for metabolic health.

**Supplementary Materials:** The following are available online at <https://www.mdpi.com/article/10.3390/biomedicines10010016/s1>, Table S1: Clinical parameters of the studied cohort of 163 subjects

before and after weight loss depending on LMP supplementation: Results are expressed as mean (SD) for continuous data and  $n$  (%) for categorical data.  $P$ -values result from Student's  $t$ -test for continuous data and Chi2 or Fisher's exact test for categorical data between the two groups. BMI: Body Mass Index; HOMA-IR: Homeostatic Model Assessment of Insulin Resistance. ASAT: aspartate transaminase; ALAT: alanine transaminase; GGT: gamma glutamyl-transpeptidase, SAS: Sleep Apnea Syndrome; basal metabolic rate was calculated using Black formula; na: not available values (less 6 values); ns =  $p$ -value  $> 0.05$ ; \*  $p$ -value  $\leq 0.05$ ; \*\* =  $p$ -value  $\leq 0.01$ ; \*\*\*  $p$ -value  $\leq 0.001$ ; \*\*\*\* =  $p$ -value  $\leq 0.0001$ . Figure S1: Enterotype composition of the GutInside cohort. (a) Lineplot of the minimum Laplace metric (Information criterium) used to define the optimal number of clusters (enterotypes) for the GutInside cohort ( $n = 426$ ). Dirichlet multinomial mixture (DMM)-based community typing. (b) PCoA (genus-level Bray–Curtis beta-diversity) visualizing the four enterotypes (colored datapoints) resulting from community typing using DMM approach on genus-level fecal microbiome profiles. (c–e) Boxplots of abundance distributions of main genus associated to the four enterotypes and used to label the groups (Bacteroides, Faecalibacterium, Bifidobacterium). (f,g) Diversity distributions based on species richness and Shannon indexes across four enterotypes. ns = non-significant; \*\* =  $p$ -value  $< 0.01$ ; \*\*\*\* =  $p$ -value  $< 0.0001$ . Wilcoxon rank-sum test. Figure S2: Association between microbiome enterotypes and clinical covariates on GutInside baseline cohort ( $n = 263$ ). The statistical test,  $p$ -value and FDR are shown on top of each plot, showing those with  $p$ -value  $< 0.05$ . Figure S3: Summary of DMM enterotyping of GutInside cohort based on species-level abundance data. (A) Lineplot of the minimum Laplace metric (Information criterium) used to define the optimal number of clusters (enterotypes) for the GutInside cohort ( $N = 426$ ) based on species-level abundance data with Dirichlet multinomial mixture (DMM)-based community typing (best  $K$  = minimum Laplace metric). (B) Species richness distribution across four groups or enterotypes defined by the DMM approach from species-level abundance data. (C) Alluvial plot of sample assignment to different enterotypes based on genus level and species-level community typing. (D) Clinical covariates with significant association with K1 group over baseline cohort based on logistic regression analyses adjusted by age, gender, and center of recruitment. Results are represented as relative risk score intervals of K1 status for numerical (left side panel) and categorical variables (right side panel) with significant associations ( $p$ -value  $< 0.05$ ). Figure S4: Associations between microbiome diversity status and clinical variables at baseline in individuals from the GutInside cohort ( $n = 163$  individuals). The statistical test,  $p$ -value and FDR are shown on top of each plot, showing those with  $p$ -value  $< 0.05$  (plots (a–d); ALAT = Alanine aminotransferase; ASAT = Aspartate aminotransferase; TSH = Thyroid-stimulating hormone) and the association with weight (e) which, despite showing  $p$ -values higher than the alpha threshold (0.05) shows worst profile in low-diversity individuals on baseline. Figure S5: Associations of fold-changes in clinical variables with Bact2 enterotype composition in the GutInside cohort. Panel (a) corresponds to the association identified in the follow-up individuals from the high-diversity group on baseline between uricemia fold-changes and Bact2 status at 10% weight loss. Panels (b–d) corresponds to associations identified in the follow-up individuals from the low-diversity group on baseline. Panels (c) explains the higher decrease in glycemia values in the Bact2 group of panel (b) by the more severe profile (high glycemia values) at baseline (T1). Figure S6: Microbiome features with significant changes between baseline and 10% weight loss in individuals from the GutInside cohort ( $n = 163$ ). (a) Bar plot representing beta-coefficients of the significant associations between bacterial species and intervention time (FDR  $< 0.05$ ; linear mixed effect models of feature abundance by intervention time with patient and LMP intake as random factors) (b) Bar plot representing beta-coefficients of the significant associations between the abundance of functional Gut Microbiome Modules (GMMs) and intervention time (FDR  $< 0.05$ ; linear mixed effect models of feature abundance by intervention time with patient and LMP intake as random factors). Positive beta-coefficients correspond to features increasing the abundance at 10% weight loss, whereas negative beta-coefficients sizes correspond to species decreasing the abundance at 10% weight loss. Figure S7: Microbial species with significant changes between baseline and 10% weight loss stratified by baseline microbiome diversity: (a) Bar plot representing beta-coefficients of the significant associations between bacterial species and intervention time ( $p$ -value  $< 0.05$ ; \* = FDR  $< 0.05$ ; linear mixed effect models of feature abundance by intervention time with patient LMP random factors) in  $n = 74$  individuals of the follow-up cohort in the high-diversity group. (b) Same as (a) for  $n = 89$  individuals of the follow-up cohort in the low-diversity group. Positive beta-coefficients in (a) and (b) correspond to species increasing the abundance at 10% weight loss, whereas negative beta-coefficients correspond to species decreasing the abundance at 10% weight loss. (c) Scatterplot of effect sizes of

species abundance changes at 10% weight loss (beta-coefficients product of linear mixed effect models of individual species abundances by intervention time with patient and LMP intake as random factors;  $n = 101$  species) between high-diversity (x-axis) and low-diversity individuals (y-axis). Points are colored by the significance level in each group, and labels correspond to bacterial species with significant changes in at least one contrast (\* = FDR < 0.05). (D) Subset of the scatterplot in (c) for the 13 microbial species associated to Bact2 enterotype in the baseline cohort. Significantly results are shown at  $p$ -value level ( $\alpha = 0.05$ ). Figure S8: Bacterial species with significant changes between baseline and 10% weight loss in paired groups of individuals taking and not taking the LMP supplementation matched by age, gender and weight: (a) Bar plot representing beta-coefficients of the significant associations between bacterial species and intervention time (FDR < 0.05; linear mixed effect models of feature abundance by intervention time with patient as random factor) in a subset of  $n = 47$  individuals taking the LMP supplementation matched by age, gender and weight with individuals not taking the LMP supplementation by the method of propensity scores. (b) Same as (a) in the group of individuals taking the LMP supplementation ( $n = 47$ ). Positive beta-coefficients in (a) and (b) correspond to species increasing the abundance at 10% weight loss, whereas negative beta-coefficients correspond to species decreasing the abundance at 10% weight loss. (c) Scatterplot of beta-coefficients product of linear mixed effect models of individual species abundances (101 bacterial species) by intervention time with patient as random factors between  $n = 47$  individuals taking the LMP supplementation (x-axis) and  $n = 47$  individuals not taking the LMP supplementation (y-axis). Points are colored by the significance level in each group, and labels correspond to bacterial species with significant changes in at least one contrast. Figure S9: Gut microbiome modules (GMMs) with significant changes between baseline and 10% weight loss in paired groups of individuals taking and not taking the LMP supplementation matched by age, gender and weight: (a) Bar plot representing beta-coefficients of the significant associations between GMM's and intervention time (FDR < 0.05; linear mixed effect models of feature abundance by intervention time with patient as random factor) in a subset of  $n = 47$  individuals taking the LMP supplementation matched by age, gender, and weight with individuals not taking the LMP supplementation by the method of propensity scores. (b) Same as (a) in the group of individuals taking the LMP supplementation ( $n = 47$ ). Positive beta-coefficients in (a) and (b) correspond to GMM's increasing the abundance at 10% weight loss, whereas negative beta-coefficients correspond to GMM's decreasing the abundance at 10% weight loss. (c) Scatterplot of beta-coefficients product of linear mixed effect models of individual GMM's abundances (102 functional modules) by intervention time with patient as random factors between  $n = 47$  individuals taking the LMP supplementation (x-axis) and  $n = 47$  individuals not taking the LMP supplementation (y-axis). Points are colored by the significance level in each group, and labels correspond to GMM's with significant changes in at least one contrast.

**Author Contributions:** K.C., E.B. and T.D.S. conceived the research question; R.A., E.B., J.-D.Z., T.D.S. and K.C. interpreted data and wrote the manuscript; E.B. implemented the metagenomics pipeline and performed bioinformatics and metagenomic analysis; E.B., R.A. and V.P. performed statistical analysis of the clinical study; O.F. and R.L. coordinated the clinical study in France; R.A. implemented shotgun metagenomic sequencing by Nanopore technology and performed technical experiments. P.B.L. and N.G. contributed to the paper writing and revision. All authors have read and agreed to the published version of the manuscript.

**Funding:** This work was in part funded by the TransAtlantic Networks of Excellence Program (33.17CVD01) from the Fondation Leducq to K.C., P.B.L. is supported by JPI MICRODIET grant 2017 (5290510105). Funding supports were also obtained from SFN (Société Française de Nutrition), F-CRIN-FORCE network for support, INSERM via ITMO, study and the Fondation pour la Recherche Médicale (FDT202106012793).

**Institutional Review Board Statement:** The study was conducted according to the guidelines of the Declaration of Helsinki, and approved by the Ethics Committee of Ile-de-France XI (protocol code: 2018-A00121-54, date of approval: 8 March 2018).

**Informed Consent Statement:** All subjects from the GutInside study provided written informed consent and the study was conducted in accordance with the Helsinki Declaration. GutInside study is registered in clinical trial <https://clinicaltrials.gov/show/NCT04822948>.

**Data Availability Statement:** The data presented in this study are available on request from the corresponding authors.

**Acknowledgments:** The clinical investigations during this real-world intervention were performed in 10 RNPC centers, as part of the RNPC Network. We thank the registered dietiticians and head of centers for their contributions to patients' phenotyping data collection and of volunteers for their invaluable contribution.

**Conflicts of Interest:** T.D.S., N.G. and E.B. work at Integrative Phenomics (Paris, France). K.C. has received grants from Danone Research (Palaiseau, France), Ysopia (Bordeaux, France), and CONFO therapeutics (Gent, Belgium); however, for work not associated with this study.

## References

- World Health Organization (WHO). Available online: <https://www.who.int/news-room/fact-sheets/detail/obesity-and-overweight> (accessed on 10 October 2021).
- Kolb, R.; Sutterwala, F.S.; Zhang, W. Obesity and cancer: Inflammation bridges the two. *Curr. Opin. Pharmacol.* **2016**, *29*, 77–89. [CrossRef]
- Martin-Rodriguez, E.; Guillen-Grima, F.; Martí, A.; Brugos-Larumbe, A. Comorbidity associated with obesity in a large population: The APNA study. *Obes. Res. Clin. Pr.* **2015**, *9*, 435–447. [CrossRef]
- Ryan, D.H.; Kahan, S. Guideline Recommendations for Obesity Management. *Med. Clin. N. Am.* **2018**, *102*, 49–63. [CrossRef]
- Beam, A.; Clinger, E.; Hao, L. Effect of Diet and Dietary Components on the Composition of the Gut Microbiota. *Nutrients* **2021**, *13*, 2795. [CrossRef] [PubMed]
- Cotillard, A.; Kennedy, S.P.; Kong, L.C.; Prifti, E.; Pons, N.; Le Chatelier, E.; Almeida, M.; Quinquis, B.; Levenez, F.; Galleron, N.; et al. Dietary intervention impact on gut microbial gene richness. *Nature* **2013**, *500*, 585–588. [CrossRef]
- Zeevi, D.; Korem, T.; Zmora, N.; Israeli, D.; Rothschild, D.; Weinberger, A.; Ben-Yacov, O.; Lador, D.; Avnit-Sagi, T.; Lotan-Pompan, M.; et al. Personalized Nutrition by Prediction of Glycemic Responses. *Cell* **2015**, *163*, 1079–1094. [CrossRef] [PubMed]
- Berry, S.E.; Valdes, A.M.; Drew, D.A.; Asnicar, F.; Mazidi, M.; Wolf, J.; Capdevila, J.; Hadjigeorgiou, G.; Davies, R.; Al Khatib, H.; et al. Human postprandial responses to food and potential for precision nutrition. *Nat. Med.* **2020**, *26*, 964–973. [CrossRef]
- Aron-Wisnewsky, J.; Prifti, E.; Belda, E.; Ichou, F.; Kayser, B.D.; Dao, M.C.; Verger, E.; Hedjazil, L.; Bouillot, J.-L.; Chevallier, J.-M.; et al. Major microbiota dysbiosis in severe obesity: Fate after bariatric surgery. *Gut* **2019**, *68*, 70–82. [CrossRef]
- Magne, F.; Gotteland, M.; Gauthier, L.; Zazueta, A.; Poeso, S.; Navarrete, P.; Balamurugan, R. The Firmicutes/Bacteroidetes Ratio: A Relevant Marker of Gut Dysbiosis in Obese Patients? *Nutrients* **2020**, *12*, 1474. [CrossRef] [PubMed]
- Vandeputte, D.; De Commer, L.; Tito, R.Y.; Kathagen, G.; Sabino, J.; Vermeire, S.; Faust, K.; Raes, J. Temporal variability in quantitative human gut microbiome profiles and implications for clinical research. *Nat. Commun.* **2021**, *12*, 1–13. [CrossRef]
- Arumugam, M.; Raes, J.; Pelletier, E.; Le Paslier, D.; Yamada, T.; Mende, D.R.; Fernandes, G.R.; Tap, J.; Bruls, T.; Batto, J.M.; et al. Enterotypes of the human gut microbiome. *Nature* **2011**, *473*, 174–180. [CrossRef]
- Vandeputte, D.; Kathagen, G.; D'Hoe, K.; Vieira-Silva, S.; Valles-Colomer, M.; Sabino, J.; Wang, J.; Tito, R.Y.; De Commer, L.; Darzi, Y.; et al. Quantitative microbiome profiling links gut community variation to microbial load. *Nat. Cell Biol.* **2017**, *551*, 507–511. [CrossRef]
- Vieira-Silva, S.; Falony, G.; Belda, E.; Nielsen, T.; Aron-Wisnewsky, J.; Chakaroun, R.; Forslund, S.K.; Assmann, K.; Valles-Colomer, M.; Nguyen, T.T.D.; et al. Statin Therapy Is Associated with Lower Prevalence of Gut Microbiota Dysbiosis. *Nature* **2020**, *581*, 310–315. [CrossRef]
- Costea, P.I.; Hildebrand, F.; Arumugam, M.; Bäckhed, F.; Blaser, M.J.; Bushman, F.D.; De Vos, W.M.; Ehrlich, S.D.; Fraser, C.M.; Hattori, M.; et al. Enterotypes in the landscape of gut microbial community composition. *Nat. Microbiol.* **2018**, *3*, 8–16. [CrossRef]
- Vieira-Silva, S.; Sabino, J.; Valles-Colomer, M.; Falony, G.; Kathagen, G.; Caenepeel, C.; Cleyne, I.; Van der Merwe, S.; Vermeire, S.; Raes, J. Quantitative microbiome profiling disentangles inflammation- and bile duct obstruction-associated microbiota alterations across PSC/IBD diagnoses. *Nat. Microbiol.* **2019**, *4*, 1826–1831. [CrossRef] [PubMed]
- Graf, D.; Di Cagno, R.; Fåk, F.; Flint, H.J.; Nyman, M.; Saarela, M.; Watzl, B. Contribution of diet to the composition of the human gut microbiota. *Microb. Ecol. Health Dis.* **2015**, *26*, 26164. [CrossRef]
- Dong, T.S.; Luu, K.; Lagishetty, V.; Sedighian, F.; Woo, S.-L.; Dreskin, B.W.; Katzka, W.; Chang, C.; Zhou, Y.; Arias-Jayo, N.; et al. A High Protein Calorie Restriction Diet Alters the Gut Microbiome in Obesity. *Nutrients* **2020**, *12*, 3221. [CrossRef] [PubMed]
- Lassen, P.B.; Belda, E.; Prifti, E.; Dao, M.C.; Specque, F.; Henegar, C.; Rinaldi, L.; Wang, X.; Kennedy, S.P.; Zucker, J.-D.; et al. Protein supplementation during an energy-restricted diet induces visceral fat loss and gut microbiota amino acid metabolism activation: A randomized trial. *Sci. Rep.* **2021**, *11*, 1–13. [CrossRef]
- Kobyliak, N.; Conte, C.; Cammarota, G.; Haley, A.P.; Styriak, I.; Gaspar, L.; Fusek, J.; Rodrigo, L.; Kruzliak, P. Probiotics in prevention and treatment of obesity: A critical view. *Nutr. Metab.* **2016**, *13*, 1–13. [CrossRef] [PubMed]
- Malaguarnera, M.; Vacante, M.; Antic, T.; Giordano, M.; Chisari, G.; Acquaviva, R.; Mastrojeni, S.; Malaguarnera, G.; Mistretta, A.; Volti, G.L.; et al. Bifidobacterium longum with Fructo-Oligosaccharides in Patients with Non Alcoholic Steatohepatitis. *Dig. Dis. Sci.* **2012**, *57*, 545–553. [CrossRef] [PubMed]

22. Larsen, T.M.; Dalskov, S.-M.; Van Baak, M.; Jebb, S.A.; Papadaki, A.; Pfeiffer, A.F.; Martinez, J.A.; Handjieva-Darlenska, T.; Kunešová, M.; Pihlsgård, M.; et al. Diets with High or Low Protein Content and Glycemic Index for Weight-Loss Maintenance. *N. Engl. J. Med.* **2010**, *363*, 2102–2113. [\[CrossRef\]](#)
23. Thorning, T.K.; Fabre, O.; Legrand, R.; Astrup, A.; Hjorth, M.F. Weight loss and weight loss maintenance efficacy of a novel weight loss program: The retrospective RNPC<sup>®</sup> cohort. *Obes. Med.* **2018**, *10*, 16–23. [\[CrossRef\]](#)
24. EFSA Panel on Dietetic Products, Nutrition and Allergies (NDA). Statement on the conditions of use for health claims related to meal replacements for weight control. *EFSA J.* **2015**, *13*, 4287. [\[CrossRef\]](#)
25. Alili, R.; Belda, E.; Le, P.; Wirth, T.; Zucker, J.-D.; Prifti, E.; Clément, K. Exploring Semi-Quantitative Metagenomic Studies Using Oxford Nanopore Sequencing: A Computational and Experimental Protocol. *Genes* **2021**, *12*, 1496. [\[CrossRef\]](#)
26. Kim, D.; Song, L.; Breitwieser, F.P.; Salzberg, S.L. Centrifuge: Rapid and sensitive classification of metagenomic sequences. *Genome Res.* **2016**, *26*, 1721–1729. [\[CrossRef\]](#)
27. Li, H. Minimap2: Pairwise alignment for nucleotide sequences. *Bioinformatics* **2018**, *34*, 3094–3100. [\[CrossRef\]](#) [\[PubMed\]](#)
28. McMurdie, P.J.; Holmes, S. phyloseq: An R Package for Reproducible Interactive Analysis and Graphics of Microbiome Census Data. *PLoS ONE* **2013**, *8*, e61217. [\[CrossRef\]](#)
29. Oksanen, J.; Blanchet, F.G.; Friendly, M.; Kindt, R.; Legendre, P.; McGlinn, D.; Minchin, P.R.; O'Hara, R.B.; Simpson, G.L.; Solymos, P.; et al. Vegan: Community Ecology Package. 2019. Available online: <https://cran.ism.ac.jp/web/packages/vegan/vegan.pdf> (accessed on 10 October 2021).
30. Holmes, I.; Harris, K.; Quince, C. Dirichlet Multinomial Mixtures: Generative Models for Microbial Metagenomics. *PLoS ONE* **2012**, *7*, e30126. [\[CrossRef\]](#) [\[PubMed\]](#)
31. Tikhonov, G.; Opedal, Ø.H.; Abrego, N.; Lehtikoinen, A.; De Jonge, M.M.J.; Oksanen, J.; Ovaskainen, O. Joint species distribution modelling with the r -package H msc. *Methods Ecol. Evol.* **2019**, *11*, 442–447. [\[CrossRef\]](#) [\[PubMed\]](#)
32. Darzi, Y.; Falony, G.; Vieira-Silva, S.; Raes, J. Towards biome-specific analysis of meta-omics data. *ISME J.* **2016**, *10*, 1025–1028. [\[CrossRef\]](#)
33. Diamond, A.; Sekhon, J.S. Genetic Matching for Estimating Causal Effects: A General Multivariate Matching Method for Achieving Balance in Observational Studies. *Rev. Econ. Stat.* **2013**, *95*, 932–945. [\[CrossRef\]](#)
34. Sekhon, J.S. Multivariate and Propensity Score Matching Software with Automated Balance Optimization: The Matching Package for R. *J. Stat. Softw.* **2011**, *42*, 1–52. [\[CrossRef\]](#)
35. Knights, D.; Ward, T.L.; McKinlay, C.E.; Miller, H.; Gonzalez, A.; McDonald, D.; Knight, R. Rethinking “Enterotypes”. *Cell Host Microbe* **2014**, *16*, 433–437. [\[CrossRef\]](#)
36. Cheng, M.; Ning, K. Stereotypes About Enterotype: The Old and New Ideas. *Genom. Proteom. Bioinform.* **2019**, *17*, 4–12. [\[CrossRef\]](#) [\[PubMed\]](#)
37. Valles-Colomer, M.; Falony, G.; Darzi, Y.; Tigchelaar, E.F.; Wang, J.; Tito, R.Y.; Schiweck, C.; Kurilshikov, A.; Joossens, M.; Wijmenga, C.; et al. The neuroactive potential of the human gut microbiota in quality of life and depression. *Nat. Microbiol.* **2019**, *4*, 623–632. [\[CrossRef\]](#) [\[PubMed\]](#)
38. Reynders, T.; Devolder, L.; Valles-Colomer, M.; Van Remoortel, A.; Joossens, M.; De Keyser, J.; Nagels, G.; D'Hooghe, M.; Raes, J. Gut microbiome variation is associated to Multiple Sclerosis phenotypic subtypes. *Ann. Clin. Transl. Neurol.* **2020**, *7*, 406–419. [\[CrossRef\]](#)
39. Vieira-Silva, S.; Falony, G.; Darzi, Y.; Lima-Mendez, G.; Yunta, R.G.; Okuda, S.; Vandeputte, D.; Valles-Colomer, M.; Hildebrand, F.; Chaffron, S.; et al. Species–function relationships shape ecological properties of the human gut microbiome. *Nat. Microbiol.* **2016**, *1*, 16088. [\[CrossRef\]](#) [\[PubMed\]](#)
40. Lopez-Siles, M.; Duncan, S.; Garcia-Gil, L.J.; Martinez-Medina, M. Faecalibacterium prausnitzii: From microbiology to diagnostics and prognostics. *ISME J.* **2017**, *11*, 841–852. [\[CrossRef\]](#)
41. Romo-Vaquero, M.; Martín, A.C.; Loria-Kohen, V.; Ramírez-De-Molina, A.; García-Mantrana, I.; Collado, M.C.; Espín, J.C.; Selma, M.V. Deciphering the Human Gut Microbiome of Urolithin Metabotypes: Association with Enterotypes and Potential Cardiometabolic Health Implications. *Mol. Nutr. Food Res.* **2019**, *63*, e1800958. [\[CrossRef\]](#)
42. Molinaro, A.; The MetaCardis Consortium; Lassen, P.B.; Henricsson, M.; Wu, H.; Adriouch, S.; Belda, E.; Chakaroun, R.; Nielsen, T.; Bergh, P.-O.; et al. Imidazole propionate is increased in diabetes and associated with dietary patterns and altered microbial ecology. *Nat. Commun.* **2020**, *11*, 1–10. [\[CrossRef\]](#) [\[PubMed\]](#)
43. Mobeen, F.; Sharma, V.; Prakash, T. Enterotype Variations of the Healthy Human Gut Microbiome in Different Geographical Regions. *Bioinformation* **2018**, *14*, 560–573. [\[CrossRef\]](#) [\[PubMed\]](#)
44. Ghosh, T.; Rampelli, S.; Jeffery, I.B.; Santoro, A.; Neto, M.C.; Capri, M.; Giampieri, E.; Jennings, A.; Candela, M.; Turroni, S.; et al. Mediterranean diet intervention alters the gut microbiome in older people reducing frailty and improving health status: The NU-AGE 1-year dietary intervention across five European countries. *Gut* **2020**, *69*, 1218–1228. [\[CrossRef\]](#) [\[PubMed\]](#)
45. So, D.; Whelan, K.; Rossi, M.; Morrison, M.; Holtmann, G.; Kelly, J.T.; Shanahan, E.R.; Staudacher, H.M.; Campbell, K.L. Dietary fiber intervention on gut microbiota composition in healthy adults: A systematic review and meta-analysis. *Am. J. Clin. Nutr.* **2018**, *107*, 965–983. [\[CrossRef\]](#) [\[PubMed\]](#)
46. Karl, J.P.; Meydani, M.; Barnett, J.B.; Vanegas, S.M.; Goldin, B.; Kane, A.; Rasmussen, H.; Saltzman, E.; Vangay, P.; Knights, D.; et al. Substituting whole grains for refined grains in a 6-wk randomized trial favorably affects energy-balance metrics in healthy men and postmenopausal women. *Am. J. Clin. Nutr.* **2017**, *105*, 589–599. [\[CrossRef\]](#)

47. Sanz, Y. Effects of a gluten-free diet on gut microbiota and immune function in healthy adult humans. *Gut Microbes* **2010**, *1*, 135–137. [[CrossRef](#)] [[PubMed](#)]
48. David, L.A.; Maurice, C.F.; Carmody, R.N.; Gootenberg, D.B.; Button, J.E.; Wolfe, B.E.; Ling, A.V.; Devlin, A.S.; Varma, Y.; Fischbach, M.A.; et al. Diet rapidly and reproducibly alters the human gut microbiome. *Nature* **2014**, *505*, 559–563. [[CrossRef](#)] [[PubMed](#)]
49. Walker, A.; Ince, J.; Duncan, S.H.; Webster, L.M.; Holtrop, G.; Ze, X.; Brown, D.; Stares, M.D.; Scott, P.; Bergerat, A.; et al. Dominant and diet-responsive groups of bacteria within the human colonic microbiota. *ISME J.* **2010**, *5*, 220–230. [[CrossRef](#)]
50. Salonen, A.H.; Lahti, L.; Salojärvi, J.; Holtrop, G.; Korpela, K.; Duncan, S.; Date, P.; Farquharson, F.; Johnstone, A.; Lobley, G.E.; et al. Impact of diet and individual variation on intestinal microbiota composition and fermentation products in obese men. *ISME J.* **2014**, *8*, 2218–2230. [[CrossRef](#)] [[PubMed](#)]
51. Beaumont, M.; Portune, K.J.; Steuer, N.; Lan, A.; Cerrudo, V.; Audebert, M.; Dumont, F.; Mancano, G.; Khodorova, N.; Andriamihaja, M.; et al. Quantity and source of dietary protein influence metabolite production by gut microbiota and rectal mucosa gene expression: A randomized, parallel, double-blind trial in overweight humans. *Am. J. Clin. Nutr.* **2017**, *106*, 1005–1019. [[CrossRef](#)] [[PubMed](#)]
52. Duncan, S.H.; Belenguer, A.; Holtrop, G.; Johnstone, A.; Flint, H.J.; Lobley, G.E. Reduced Dietary Intake of Carbohydrates by Obese Subjects Results in Decreased Concentrations of Butyrate and Butyrate-Producing Bacteria in Feces. *Appl. Environ. Microbiol.* **2007**, *73*, 1073–1078. [[CrossRef](#)]
53. Duncan, S.; Louis, P.; Thomson, J.M.; Flint, H.J. The role of pH in determining the species composition of the human colonic microbiota. *Environ. Microbiol.* **2009**, *11*, 2112–2122. [[CrossRef](#)]
54. Cani, P.D.; Neyrinck, A.; Fava, F.; Knauf, C.; Burcelin, R.G.; Tuohy, K.; Gibson, G.R.; Delzenne, N.M. Selective increases of bifidobacteria in gut microflora improve high-fat-diet-induced diabetes in mice through a mechanism associated with endotoxaemia. *Diabetologia* **2007**, *50*, 2374–2383. [[CrossRef](#)]
55. Swanson, K.S.; Gibson, G.R.; Hutkins, R.; Reimer, R.A.; Reid, G.; Verbeke, K.; Scott, K.P.; Holscher, H.D.; Azad, M.B.; Delzenne, N.M.; et al. The International Scientific Association for Probiotics and Prebiotics (ISAPP) consensus statement on the definition and scope of synbiotics. *Nat. Rev. Gastroenterol. Hepatol.* **2020**, *17*, 687–701. [[CrossRef](#)] [[PubMed](#)]
56. Dewulf, E.M.; Cani, P.; Claus, S.; Fuentes, S.; Puylaert, P.G.B.; Neyrinck, A.; Bindels, L.B.; De Vos, W.M.; Gibson, G.R.; Thissen, J.-P.; et al. Insight into the prebiotic concept: Lessons from an exploratory, double blind intervention study with inulin-type fructans in obese women. *Gut* **2012**, *62*, 1112–1121. [[CrossRef](#)]
57. Wang, K.; Liao, M.; Zhou, N.; Bao, L.; Ma, K.; Zheng, Z.; Wang, Y.; Liu, C.; Wang, W.; Wang, J.; et al. Parabacteroides distasonis Alleviates Obesity and Metabolic Dysfunctions via Production of Succinate and Secondary Bile Acids. *Cell Rep.* **2019**, *26*, 222–235. [[CrossRef](#)] [[PubMed](#)]
58. Dao, M.C.; Everard, A.; Aron-Wisnewsky, J.; Sokolovska, N.; Prifti, E.; Verger, E.O.; Kayser, B.D.; Levenez, F.; Chilloux, J.; Hoyle, L.; et al. Akkermansia muciniphila and improved metabolic health during a dietary intervention in obesity: Relationship with gut microbiome richness and ecology. *Gut* **2016**, *65*, 426–436. [[CrossRef](#)]
59. Depommier, C.; Everard, A.; Druart, C.; Plovier, H.; Van Hul, M.; Vieira-Silva, S.; Falony, G.; Raes, J.; Maiter, D.; Delzenne, N.M.; et al. Supplementation with Akkermansia muciniphila in overweight and obese human volunteers: A proof-of-concept exploratory study. *Nat. Med.* **2019**, *25*, 1096–1103. [[CrossRef](#)]
60. Bel Lassen, P.B.; Attaye, I.; Adriouch, S.; Nicolaou, M.; Aron-Wisnewsky, J.; Nielsen, T.; Chakaroun, R.; Le Chatelier, E.; Forslund, S.; Belda, E.; et al. Protein Intake, Metabolic Status and the Gut Microbiota in Different Ethnicities: Results from Two Independent Cohorts. *Nutrients* **2021**, *13*, 3159. [[CrossRef](#)] [[PubMed](#)]
61. Al Bataineh, M.T.; Dash, N.; Lassen, P.B.; Banimfreg, B.H.; Nada, A.M.; Belda, E.; Clément, K. Revealing links between gut microbiome and its fungal community in Type 2 Diabetes Mellitus among Emirati subjects: A pilot study. *Sci. Rep.* **2020**, *10*, 9624. [[CrossRef](#)] [[PubMed](#)]
62. De Oliveira, E.P.; Moreto, F.; Silveira, L.; Burini, R.C. Dietary, anthropometric, and biochemical determinants of uric acid in free-living adults. *Nutr. J.* **2013**, *12*, 11. [[CrossRef](#)]
63. Zhao, L.; Zhang, F.; Zhang, C.; Ding, X.; Wu, G.; Lam, Y.Y.; Wang, X.; Fu, H.; Xue, X.; Lu, C.; et al. Gut bacteria selectively promoted by dietary fibers alleviate type 2 diabetes. *Science* **2018**, *359*, 1151–1156. [[CrossRef](#)] [[PubMed](#)]
64. Sergeev, I.N.; Aljutaily, T.; Walton, G.; Huarte, E. Effects of Synbiotic Supplement on Human Gut Microbiota, Body Composition and Weight Loss in Obesity. *Nutrition* **2020**, *12*, 222. [[CrossRef](#)] [[PubMed](#)]