



**HAL**  
open science

## Delayed inflammation decrease is associated with mortality in Tocilizumab-treated critically ill SARS-CoV-2 patients: A retrospective matched-cohort analysis

Tomas Urbina, Jean-Rémi Lavillegrand, Marc Garnier, Arsene Mekinian, Jerome Pacanowski, Nathalie Mario, Guillaume Dumas, Geoffroy Hariri, Antoine Pilon, Lucie Darrivière, et al.

### ► To cite this version:

Tomas Urbina, Jean-Rémi Lavillegrand, Marc Garnier, Arsene Mekinian, Jerome Pacanowski, et al.. Delayed inflammation decrease is associated with mortality in Tocilizumab-treated critically ill SARS-CoV-2 patients: A retrospective matched-cohort analysis. *Innate Immunity*, 2022, pp.175342592110646. 10.1177/17534259211064602 . hal-03549535

**HAL Id: hal-03549535**

**<https://hal.sorbonne-universite.fr/hal-03549535>**

Submitted on 31 Jan 2022

**HAL** is a multi-disciplinary open access archive for the deposit and dissemination of scientific research documents, whether they are published or not. The documents may come from teaching and research institutions in France or abroad, or from public or private research centers.

L'archive ouverte pluridisciplinaire **HAL**, est destinée au dépôt et à la diffusion de documents scientifiques de niveau recherche, publiés ou non, émanant des établissements d'enseignement et de recherche français ou étrangers, des laboratoires publics ou privés.

# Delayed inflammation decrease is associated with mortality in Tocilizumab-treated critically ill SARS-CoV-2 patients: A retrospective matched-cohort analysis

Innate Immunity

Volume 0: 1–8

© The Author(s) 2022


Article reuse guidelines:

sagepub.com/journals-permissions

DOI: 10.1177/17534259211064602

journals.sagepub.com/home/ini



Tomas Urbina<sup>1,2</sup> , Jean-Rémi Lavillegrand<sup>1,2</sup>, Marc Garnier<sup>2,3</sup>, Arsene Mekinian<sup>2,4</sup>, Jerome Pacanowski<sup>5</sup>, Nathalie Mario<sup>6</sup>, Guillaume Dumas<sup>7</sup>, Geoffroy Hariri<sup>1,2</sup>, Antoine Pilon<sup>6</sup>, Lucie Darrivière<sup>3</sup>, Muriel Fartoukh<sup>2,8</sup>, Bertrand Guidet<sup>1,2</sup>, Eric Maury<sup>1,2</sup>, Judith Leblanc<sup>9</sup>, Yannick Chantran<sup>10</sup>, Olivier Fain<sup>2,4</sup>, Karine Lacombe<sup>2,5</sup>, Guillaume Voiriot<sup>2,8</sup> and Hafid Ait-Oufella<sup>1,2,11</sup>

## Abstract

Little is known about the immuno-inflammatory response to Tocilizumab and its association with outcome in critically-ill SARS-CoV2 pneumonia. In this multicenter retrospective cohort of SARS-CoV-2 patients admitted to three intensive care units between March and April 2020, we matched on gender and SAPS II 21 Tocilizumab-treated patients to 42 non-treated patients. Need for mechanical ventilation was 76% versus 79%. IL-6, C-reactive protein, and fibrinogen had been collected within the first days of admission (T1), 3 d (T2) and 7 d (T3) later. Tocilizumab-treated patients had persistently higher IL-6 plasma levels and persistently lower C-Reactive protein and fibrinogen levels. Among Tocilizumab-treated patients, baseline levels of inflammatory biomarkers were not different according to outcome. Conversely, C-reactive protein and fibrinogen decrease was delayed in non-survivors. C-Reactive protein decreased at T1 in survivors (45 [30–98] vs 170 [69–204] mg/l,  $P < 0.001$ ) but only at T2 in non-survivors (37 [13–74] vs 277 [235–288],  $P = 0.03$ ). Fibrinogen decreased at T2 in survivors (4.11 [3.58–4.69] vs 6.14 [5.61–7.85] g/l,  $P = 0.005$ ) but not in non-survivors (4.79 [4.12–7.58] vs 7.24 [6.22–9.24] g/l,  $P = 0.125$ ). Tocilizumab treatment was thus associated with a persistent both increase in plasma IL-6, and decrease in C-reactive protein and fibrinogen. Among Tocilizumab-treated patients, the decrease in inflammatory biomarkers was delayed in non-survivors.

## Keywords

SARS-CoV-2, intensive care unit, cytokine, Tocilizumab, C-reactive protein

Date received: 21 July 2021; revised: 25 October 2021; accepted: 17 November 2021

<sup>1</sup>Service de Médecine Intensive-Réanimation, Hôpital Saint-Antoine, Assistance Publique-Hôpitaux de Paris, France

<sup>2</sup>Sorbonne Université, France

<sup>3</sup>Service d'Anesthésie-Réanimation, Hôpital Saint-Antoine, Assistance Publique-Hôpitaux de Paris, France

<sup>4</sup>Service de médecine interne, Hôpital Saint-Antoine, Assistance Publique-Hôpitaux de Paris, France

<sup>5</sup>Service de maladies infectieuses, Hôpital Saint-Antoine, Assistance Publique-Hôpitaux de Paris, France

<sup>6</sup>Département de Biochimie, Hormonologie et Suivi Thérapeutique, Hôpital Saint-Antoine, Assistance Publique-Hôpitaux de Paris, France

<sup>7</sup>Service de Médecine Intensive-Réanimation, Hôpital Saint-Louis, Assistance Publique-Hôpitaux de Paris, France

<sup>8</sup>Service de Médecine Intensive-Réanimation, Hôpital Tenon, Assistance Publique-Hôpitaux de Paris, France

<sup>9</sup>Sorbonne Université, INSERM, Institut Pierre Louis d'Épidémiologie et de Santé Publique, France

<sup>10</sup>Département d'Immunologie Biologique, Hôpital Saint-Antoine, Assistance Publique-Hôpitaux de Paris, France

<sup>11</sup>Inserm U970, Cardiovascular research center, Université de Paris, France

## Corresponding author:

Tomas Urbina, Réanimation Médicale, Hôpital Saint-Antoine, Assistance Publique-Hôpitaux de Paris, 184 rue du faubourg Saint-Antoine 75571 Paris cedex 12, France.

Email: tomas.urbina@aphp.fr



## Introduction

Few interventions for SARS-CoV2 pneumonia aside from systemic steroids have shown a survival benefit,<sup>1</sup> highlighting the importance of host response in pathogenesis. SARS-CoV-2 infection leads to impaired both innate and adaptive immune responses including high production of IL-6, which may participate to organ and notably lung damage.<sup>2</sup> We have recently reported, in a multicentre cohort of patients admitted to the intensive care unit (ICU) for SARS-CoV-2 infection, that elevated IL-6, C-reactive protein (CRP) and fibrinogen levels were associated with poor outcome.<sup>3</sup> Conflicting results of randomized trials evaluating Tocilizumab, an anti-IL-6 receptor (anti-IL6R) mAb, certainly show that a “one-size-fits-all” approach is not adequate.<sup>4–10</sup> These trials had very different inclusion criteria as well as dosage and re-injection strategies, which may in part explain discrepancies. Retrospective work has suggested that treatment response is variable depending both on illness severity but also on treatment modalities.<sup>11,12</sup> Fine tuning the subset of patients most likely to benefit from such therapies as well as the ideal timing of administration and dosage can only be achieved by a better understanding of their effect on the immune response.

The aim of this study was to describe the immune-inflammatory profile of critically-ill SARS-CoV-2 patients compassionately treated by Tocilizumab, to compare it to that of untreated patients, and to analyze it according to the outcome among treated patients.

## Methods

### Patients

All patients with laboratory-confirmed SARS-CoV-2 infection, referred to Saint-Antoine and Tenon Hospitals (Paris, France), and subsequently admitted to one of their 3 ICUs between 1 March and 15 April 2020, were retrospectively screened. Only patients with at least one available plasma cytokine measurement available in the ICU were eligible for study inclusion. Laboratory confirmation for SARS-CoV-2 was defined as a positive result of real-time reverse transcriptase-PCR (RT-PCR) assay of nasopharyngeal swabs or lower respiratory tract samples.

We included all patients having received Tocilizumab, which were matched to controls who had not. Among treated patients, survivors were then compared to non-survivors.

In Saint-Antoine hospital, in the emergency context of the SARS-CoV-2 pandemic, and before the onset of randomized clinical trials, a multidisciplinary committee including physicians from different specialties (Internal medicine, infectious diseases, intensive care medicine, radiology) was created. Based on clinical and biological parameters (oxygen requirements > 6 l/min or a rise equal or superior to 4 l/min in less than 48 h, CRP levels >

100 mg/l and no evidence of bacterial co-infection) this committee proposed compassionate Tocilizumab to SARS-CoV-2 patients with severe disease, and written informed consent was collected for all patients before administration.

### Data collection

We evaluated and analyzed the medical history, physical examination, and hematological, biochemical, microbiological and immunological data obtained from included patients. Epidemiological, clinical and laboratory characteristics, treatment and outcome data were obtained from electronic medical records. Data collection forms were anonymized and reviewed independently by two investigators. Data collected upon admission included age, gender, comorbidities (obesity, hypertension, diabetes mellitus, cardiovascular disease, chronic respiratory disease, chronic renal failure with creatinine clearance < 60 ml/kg/min). Disease severity was evaluated using the simplified acute physiology score II (SAPS II), the sequential organ failure assessment score without neurological points (SOFA) and organ support therapy.

Plasma levels of three cytokines (IL-10, TNF- $\alpha$ , and IL-6) were measured in association with other inflammatory markers, including CRP or fibrinogen within the first days of ICU admission (T1), 3 d (T2) and 7 d (T3) after. Cytokines were measured by ELISA (Quantikine ELISA Kit, R&D Systems) on plasma according to the appropriate dilution and following recommendations of the manufacturer. Thresholds detection were 7.8 pg/ml for IL-10, 15.6 pg/ml for TNF- $\alpha$ , and 3.13 pg/ml for IL-6. Organ failure severity was evaluated at the same time-points using organ support therapy and the SOFA score. The latter's variations were assessed as a delta-SOFA defined by the difference between the later time and the earlier time-point values of the score. A negative delta-SOFA was thus an improvement in organ failure severity, a positive one a worsening.

### Statistical analysis

Patient characteristics were summarized as median (25th–75th percentiles) for continuous variables with skewed distributions and percentages for categorical variables as appropriate. Patients having received Tocilizumab were matched to untreated control patients base on sex and admission SAPS II score on a 1:2 ratio with a caliper of 0.3. Differences between groups were compared using the Mann-Whitney test for continuous variables or Fisher's exact test for categorical variables. Wilcoxon's paired test was used to analyze variations of biomarker concentrations between different time points. All tests were two-sided, and *P* values less than 0.05 were considered statistically significant. No imputation was performed for missing data. No patient was lost to follow-up. Statistical analyses were

**Table 1.** Study population admission characteristics. Patients treated with Tocilizumab were matched on a 1:2 ratio to untreated control patients based on sex and SAPS II upon admission.

	Matched controls (n = 42)	Treated patients (n = 21)	P <sup>a</sup>
<b>Demographics</b>			
Age (yr, median [IQR] <sup>b</sup> )	59 [47–66]	57 [45–62]	0.470
Male sex (%)	33 (79)	17 (81)	> 0.999
<b>Comorbidities</b>			
Body mass index > 30 (%)	21 (50)	7 (33)	0.284
Hypertension (%)	20 (47)	8 (38)	0.654
Diabetes mellitus (%)	17 (40)	7 (33)	0.783
Cardiac insufficiency (%)	5 (12)	2 (10)	> 0.999
Chronic respiratory insufficiency (%)	9 (21)	3 (14)	0.734
Chronic kidney injury (%)	7 (17)	1 (5)	0.349
Malignant hemopathy (%)	1 (2)	0 (0)	> 0.999
ACE <sup>c</sup> inhibitors/ ARB <sup>d</sup> (%)	17 (41)	2 (10)	<b>0.026</b>
Immunosuppression (%)	4 (10)	2 (10)	> 0.999
<b>Disease course</b>			
Delay from 1st symptoms to ICU <sup>e</sup> admission, d (median [IQR])	8 [5–12]	10 [7–13]	0.161
Delay from 1st symptoms to inclusion, d (median [IQR])	14 [10–19]	14 [11–18]	0.936
Duration of mechanical ventilation at inclusion, d (median [IQR])	5 [1–11]	2 [1–3]	<b>0.024</b>
<b>Severity upon admission</b>			
SAPS II <sup>f</sup> (median [IQR])	28 [25–36]	28 [24–34]	0.759
SOFA <sup>g</sup> score (median [IQR])	4 [3–7]	3 [3–5]	0.717
Mechanical ventilation (%)	33 (78.6)	16 (76)	> 0.999
Sedation (%)	28 (66.7)	15 (71)	0.924
Neuromuscular blockade (%)	22 (52)	12 (57)	0.929
Prone positioning (%)	22 (52)	7 (33)	0.245
Renal replacement therapy (%)	3 (7.1)	1 (5)	> 0.999
Vasopressors (%)	13 (31.0)	6 (29)	> 0.999
Vasopressor dose, µg/kg/min (median [IQR])	0 [0, 0.35]	0 [0, 0.20]	0.802
PaO <sub>2</sub> /FiO <sub>2</sub> ratio (median [IQR])	140 [114–224]	133 [93–169]	0.171

<sup>a</sup>P Values from Mann–Whitney’s test for continuous variables and Fisher’s exact test for categorical variables.

<sup>b</sup>IQR: interquartile range.

<sup>c</sup>ACE: angiotensin-converting-enzyme inhibitors.

<sup>d</sup>ARB: angiotensin II receptor blockers.

<sup>e</sup>ICU: intensive care unit.

<sup>f</sup>SAPS II: simplified acute physiology score II.

<sup>g</sup>SOFA: sequential organ failure assessment.

bold P values are those < 0.05

performed using R (<https://www.R-project.org/>) software, and graphical representations were established using GraphPad Prism 5.04 (Graph Pad Software Inc. ®).

### Study approval

The study was performed in accordance with Good Clinical Practice and the Declaration of Helsinki principles for ethical research. The study protocol was approved by the Institutional Review Board of Entrepôt de Données de Santé de l’Assistance Publique – Hôpitaux de Paris (AP-HP) and by the Ethical committee, *Comité de Protection des Personnes (CPP Ile de France X, 2020-A02784-35)*. All patients received information during their hospital stay that data abstracted from their medical charts could be used for research purposes.

## Results

### Study population

Over a 6-wk period, 150 patients with RT-PCR confirmed SARS-CoV-2 infection were admitted in the three ICUs. Cytokine profile was available for 130 patients. Twenty-one patients were treated with Tocilizumab (8 mg/kg), a median of 10 [8–16] d after symptom onset, and 3 [1–4] d before first cytokine dosage (T1). These 21 treated patients were matched on a 1:2 ratio to 42 matched control patients who did not receive anti-IL6R therapy (Supplemental Figure 1).

Baseline characteristics are summarized in Table 1. The median age in treated and matched controls was of respectively 57 [45–62] versus 59 [47–66] yr old, with a high proportion of men. Comorbidities were frequent and the only

significant difference was a higher proportion of patients treated with angiotensin-converting-enzyme inhibitors or angiotensin-receptor-blockers in the control group (10% vs 41%,  $P=0.026$ ). Patients had severe respiratory disease with a PaO<sub>2</sub>/FiO<sub>2</sub> ratio of 133 [93–169] vs 140 [114–224] mmHg ( $P=0.171$ ), requiring mechanical ventilation in 76% versus 79% patients ( $P>0.999$ ) upon admission, and prone positioning in 33% versus 52% ( $P=0.245$ ) during ICU stay. Although there was a trend for control patients to having more frequently received steroids, this was not significant (5% vs 24%,  $P=0.127$ ). First cytokine dosage (T1) was performed a median of 14 d after first symptoms in both groups.

Median length of follow-up was 52 [43–59] d. Regarding outcomes, improvement in organ dysfunction between T1 and T2 (i.e. 3 d) was less important in Tocilizumab-treated patients as compared to matched controls (delta-SOFA 0 [–1;2] vs –1 [–3;0],  $P=0.017$ ) (Supplemental Figure 2). During ICU stay, extra-corporeal membrane oxygenation was more frequently required in the treated group (19% vs 0%,  $P=0.018$ ). Nevertheless, there was no significant difference in other outcomes, notably in the rate of bacterial infections at T3 (70% vs 58%,  $P=0.536$ ), or in d-60 censored mortality (29% vs 19%,  $P=0.592$ ) (Supplemental Table 1).

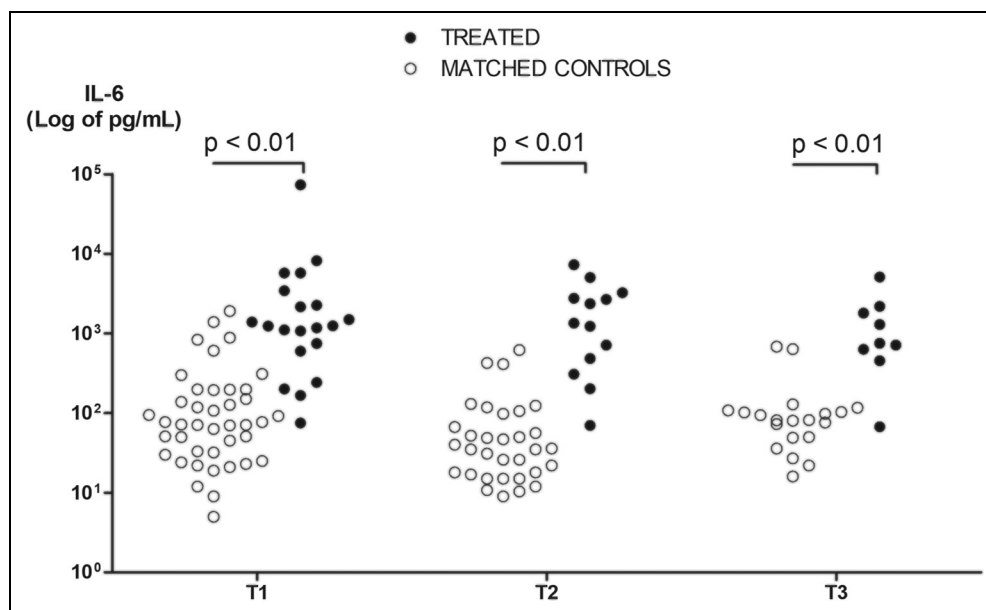
### Systemic immune profile in Tocilizumab-treated patients versus matched controls

Whatever the delay between symptom onset and 1st dosage, IL-6 plasma levels were higher in Tocilizumab-treated

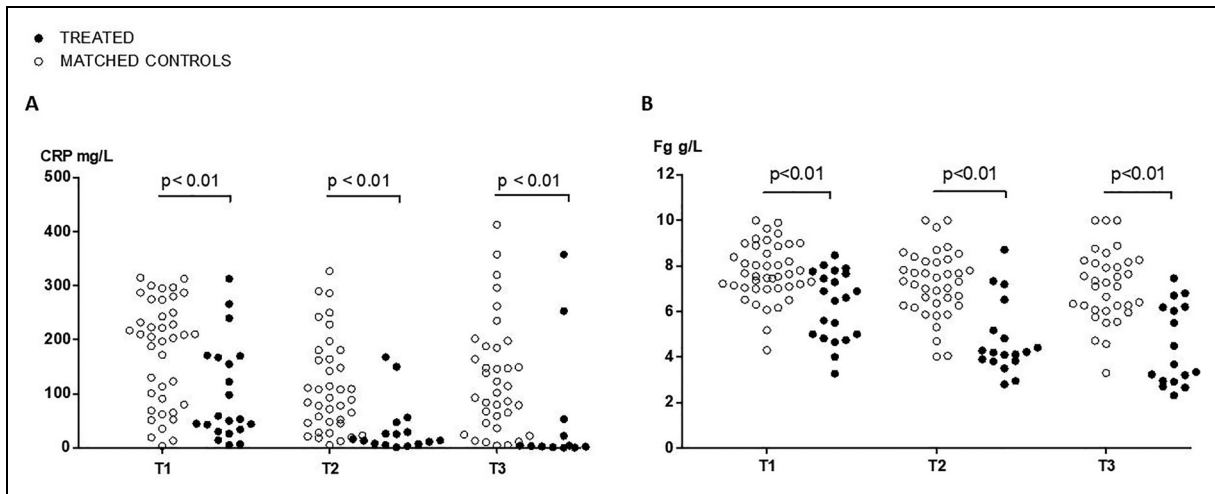
patients than in matched controls at T1 (1244 [712–2561] vs 72 [32–195] pg/ml,  $P<0.001$ ) (Supplemental Figure 3), and this difference persisted at T2 and T3 (Figure 1). No difference was noted for IL-10 but TNF- $\alpha$  levels were lower in treated patients at T3 (Supplemental Figure 4). Both CRP and fibrinogen were lower in treated patients at T1 (CRP 53 [34–167] vs 207 [88–256] mg/l,  $P=0.003$ ; fibrinogen 6.61 [5.00–7.65] vs 7.59 [7.05–8.79] g/l,  $P=0.001$ ). Again, this difference persisted at T2 and T3 (Figure 2). There was no significant difference between groups regarding blood lymphocyte counts (Supplemental Figure 5).

### Immune profile in Tocilizumab-treated patients according to the outcome

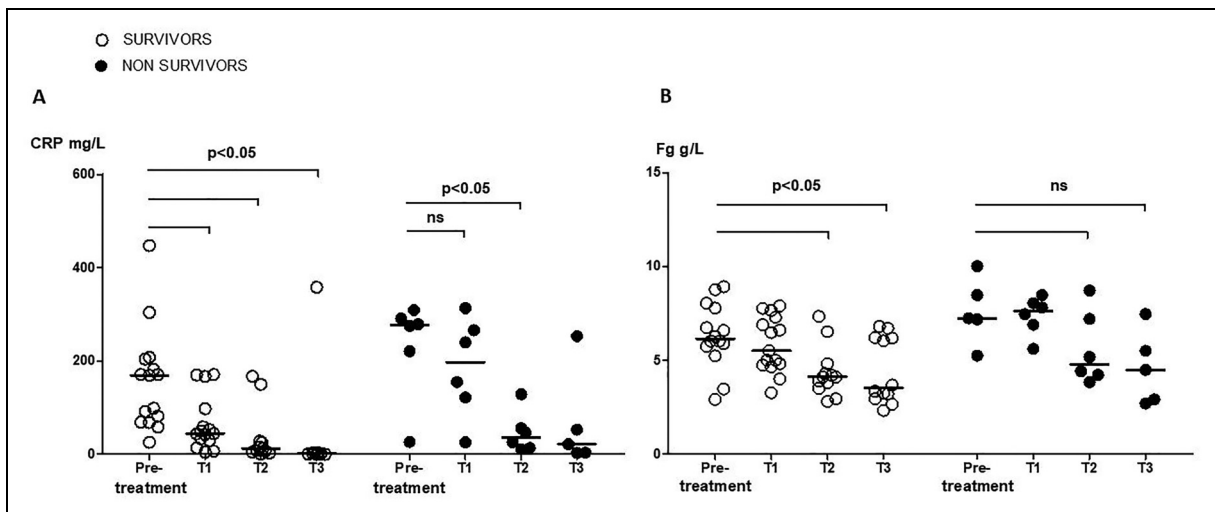
Next, we focused on Tocilizumab-treated patients and their systemic immune profile according to the outcome. The kinetics of CRP and fibrinogen plasma levels amongst the 15 (71%) survivors and 6 (29%) non-survivors, are presented in Figure 3. Pre-treatment levels were not different between survivors and non survivors (CRP 170 [69–294] vs 277 [235–288] mg/l,  $P=0.09$ ; fibrinogen 6.14 [5.61–7.85] vs 7.24 [6.22–9.24] g/l,  $P=0.211$ ). However, although time between anti-IL6R injection and first subsequent dosage (T1) was not different between survivors and non-survivors (2 [1–4] vs 4 [1–5],  $P=0.580$ ), the kinetic of inflammatory biomarkers was different according to the outcome. When compared to pre-treatment levels, CRP significantly dropped at T1 in survivors (45 [30–98] vs 170 [69–204] mg/l,



**Figure 1.** IL-6 plasma level kinetics in Tocilizumab-treated patients and matched controls. IL-6 expressed in log of pg/ml.  $P$  Values from a Mann–Whitney test for IL-6 at T1, T2, and T3 between treated patients and matched controls. T1 was the day of 1st cytokine, CRP, fibrinogen and blood lymphocyte count measurement within the first d of ICU admission, T2 was 3 d later and T3 7 d later.



**Figure 2.** (A) C-Reactive protein and (B) fibrinogen kinetics in Tocilizumab-treated patients and matched controls. *P* Values from a Mann–Whitney test for C-reactive protein or fibrinogen at T1, T2, and T3 between treated patients and matched controls. T1 was the day of 1st cytokine, CRP, fibrinogen and blood lymphocyte count measurement within the first d of ICU admission, T2 was 3 d later and T3 7 d later.



**Figure 3.** (A) CRP and (B) fibrinogen plasma level kinetics amongst patients treated with Tocilizumab, according to survival. Survival censored at d-60. *P* Values from a Wilcoxon’s paired test for CRP and fibrinogen between different time points amongst respectively survivors and non-survivors in treated patients. Pre-treatment was the day of anti-IL6R injection, T1 was the day of 1st cytokine, CRP, fibrinogen and blood lymphocyte count measurement available in the ICU, T2 was 3 d later and T3 7 d later.

$P < 0.001$ ) but did not in non-survivors (198 [98–278] vs 277 [173–296],  $P = 0.219$ ) (Figure 3(A)). CRP decreased later in non-survivors at T2 (37 [13–74] vs 277 [173–296],  $P = 0.031$ ). Similarly, when compared to pre-treatment levels, fibrinogen significantly decreased at T2 in survivors (4.11 [3.58–4.69] vs 6.14 [5.61–7.85] g/l,  $P = 0.005$ ) but not in non-survivors (4.79 [4.12–7.58] vs 7.24 [6.22–9.24] g/l,  $P = 0.125$ ) (Figure 3(B)). Although pre-treatment baseline IL-6 plasma levels were not available, levels between survivors and non-survivors were not different at T1 (1238 [675–1825] vs

5747 [1173–8176] pg/ml,  $P = 0.197$ ) or T3 (713 [261–1547] vs 1470 [660–4375],  $P = 0.286$ ) (Supplemental Figure 6).

## Discussion

The main findings from this matched cohort analysis of critically ill SARS-CoV-2 patients treated with Tocilizumab are as follows: (1) Anti-IL6R treatment, as compared to matched controls, was associated with a significant and persistent increase in plasma IL-6 levels and a significant and persistent

decrease in plasma CRP and fibrinogen levels; (2) Amongst Tocilizumab-treated patients, pre-treatment baseline CRP and fibrinogen levels could not discriminate survivors and non-survivors; (3) Following Tocilizumab treatment, CRP and fibrinogen level decrease was delayed in non-survivors.

Both elevated IL-6 plasma levels at a single time-point and their persistence have been identified as predictive for mortality in SARS-CoV-2 patients,<sup>3,8,13,14</sup> prompting interest in anti-IL-6R therapy.<sup>4-9</sup> Nevertheless, the results of eleven randomized controlled trials evaluating anti-IL-6R in SARS-CoV2 have yielded conflicting results.<sup>5,7-10,15-20</sup> Only two trials found a survival benefit,<sup>7,10</sup> while the others did not,<sup>5,8,9,15-20</sup> including one that was stopped early because of an increased risk of death in the Tocilizumab-treated arm.<sup>19</sup> Similarly, recent meta-analyses show discordant findings.<sup>21-24</sup> These discrepancies suggest a “one size fits all” approach is not optimal. Moreover, study methodology varied widely regarding both use of biomarkers as inclusion criteria and timing, indication and dose of re-injection, with retrospective data suggesting a variable treatment effect according to disease severity, timing and dosage of treatment.<sup>11,12</sup> Whether identifying a subset of responders, optimal timing or need for higher doses or re-injection would impact survival remains an important unresolved question.

We found that Tocilizumab treatment results in increased circulating IL-6 levels, in accordance with recent prospective data.<sup>19</sup> Whether this is due to reduced clearance by lack of receptor-binding or to a rise in production by a positive feedback remains unknown.<sup>25</sup> Nevertheless, this observation raises the interest of downstream biomarkers to both screen patients most likely to benefit from IL-6 receptor blockade and to evaluate response to treatment, more so as the systemic inflammatory profile of SARS-CoV2 patient has been described as more complex than a single biomarker can capture.<sup>26</sup> We focused on CRP and fibrinogen as global markers of inflammation produced by the liver in response to IL-6 receptor engagement and JAK-STAT pathway activation.<sup>27,28</sup> We recently reported that high CRP levels at ICU admission were associated with organ failure worsening within the next three days in patients not treated with anti-IL-6R.<sup>3</sup> Our finding that CRP decreases in all Tocilizumab-treated patients is consistent with the work by Veiga et al.<sup>19</sup> but not by Soin et al.<sup>20</sup> This discrepancy is not explained by steroid use, as more than 70% of patients from both studies received steroids. Regarding the subset of responders, only four of the randomized trials used elevated CRP as an inclusion criteria.<sup>8,10,16,19</sup>

We further assessed whether kinetics of the immunoinflammatory profile after Tocilizumab administration were associated with outcome. Here, among Tocilizumab-treated patients, baseline pre-treatment levels of CRP and fibrinogen could not discriminate survivors and non-survivors, consistent with two uncontrolled cohorts of Tocilizumab-treated patients.<sup>29,30</sup> Regarding kinetics, Toniati et al. found no

difference between improvers and non-improvers, but evaluation was done only at a single and very late timepoint, ten days after treatment.<sup>29</sup> In contrast, we analyzed variations within the first week after Tocilizumab injection and found that CRP and fibrinogen drop was delayed in non-survivors. Although we found no significant difference in IL-6 levels except at T2, higher levels 24 h after Tocilizumab injection were associated with mortality in another small cohort.<sup>31</sup> This is of importance, especially as administration of a second dose of anti-IL6R was very heterogenous in randomized trials. Two did not allow re-injection,<sup>8,19</sup> one planned it systematically 12 h after the first<sup>16</sup> and the remaining eight allowed it between 24 h and 7 d later.<sup>5,7,9,10,15,17,18,20</sup> In these latter trials, decision to administrate a second dose was based on the absence of clinical improvement or according to treating physician decision, and approximately 30% of patients received it. No trial included biomarkers as a criterion to inject a second dose. Our data suggests that the timing of inflammation control induced by Tocilizumab, especially in the first few days, may be critical and associated with survival, which could help better target patients most likely to benefit from a second dose of treatment. Of note, differences in inflammatory responses after anti-IL6R treatment between survivors and non-survivors are unlikely due to secondary infection in this cohort, as bacterial infection rate was similar between groups, as previously reported.<sup>32</sup>

This work has some limitations. There was some heterogeneity in the timing between symptom onset and 1st cytokine dosage as well as anti-IL6R treatment. All treated patients received Tocilizumab before 1st cytokine dosage, at a median of 3 d before and pre-treatment interleukine 6 levels were thus not available. Although these baseline levels have been associated with outcome in patients not treated with anti-IL6R,<sup>3</sup> this was not the case in other uncontrolled series of patients having received such treatments.<sup>31,33</sup> Due to the inclusion period early in the pandemic, few patients received steroids. Finally, this study was not designed to assess safety or efficacy of anti-IL6R treatment in SARS-CoV-2 infection, as the small sample size may result in limited statistical power, and results regarding global outcome should be analyzed with caution.

## Conclusions

In this multicenter matched-cohort analysis of critically-ill SARS-CoV-2 patients, Tocilizumab treatment was associated with a decrease in CRP and fibrinogen levels, but this decrease was delayed in non-survivors. In light of recent randomized trials, these findings could help refine the subset of patients most likely to benefit from such treatments, as well as the optimal timing, dosage, or need for re-injection.

## Acknowledgments

We are indebted to Pierre Aucouturier, Guillaume Lefevre, Jerome Guéchet, Michel Vaubourdolle, Jean-Claude Buzzi, and Marion

Fages for their help and l'Entrepôt de Données de Santé de l'Assistance Publique – Hôpitaux de Paris (AP-HP) for their help in data extraction.

### Availability of data and material

The dataset used for the analysis is available from the corresponding author on reasonable request.


### Declaration of conflicting interests

The authors declared no potential conflicts of interest with respect to the research, authorship, and/or publication of this article.

### Funding

The authors received no financial support for the research, authorship and/or publication of this article.

### ORCID iD

Tomas Urbina  <https://orcid.org/0000-0002-3745-9427>

### Supplemental material

Supplemental material for this article is available online.

### References

1. The RECOVERY Collaborative Group. Dexamethasone in hospitalized patients with covid-19 – preliminary report. *N Engl J Med* 2021; 384(8): 693–704. doi: 10.1056/NEJMoa2021436.
2. Jamilloux Y, Henry T, Belot A, et al. Should we stimulate or suppress immune responses in COVID-19? Cytokine and anti-cytokine interventions. *Autoimmun Rev* 2020; 19: 102567.
3. Lavillegrand J-R, Garier M, Spaeth A, et al. Elevated plasma IL-6 and CRP levels are associated with adverse clinical outcomes and death in critically ill SARS-CoV-2 patients. Inflammatory response of SARS-CoV-2 patients. *Ann Intensive Care* 2021; 11(1): 9. doi: 10.1186/s13613-020-00798-x.
4. Rilinger J, Kern WV, Duerschmied D, et al. A prospective, randomised, double blind placebo-controlled trial to evaluate the efficacy and safety of tocilizumab in patients with severe COVID-19 pneumonia (TOC-COVID): a structured summary of a study protocol for a randomised controlled trial. *Trials* 2020; 21: 470.
5. Hermine O, Mariette X, Tharaux P-L, et al. Effect of tocilizumab vs usual care in adults hospitalized With COVID-19 and moderate or severe pneumonia: a randomized clinical trial. *JAMA Intern Med* 2021; 181(1): 32–40. doi: 10.1001/jamainternmed.2020.6820.
6. Capra R, De Rossi N, Mattioli F, et al. Impact of low dose tocilizumab on mortality rate in patients with COVID-19 related pneumonia. *Eur J Intern Med* 2020; 76: 31–35.
7. The REMAP-CAP Investigators. Interleukin-6 receptor antagonists in critically ill patients with covid-19. *N Engl J Med* 2021; 384: 1491–1502.
8. Stone JH, Frigault MJ, Serling-Boyd NJ, et al. Efficacy of tocilizumab in patients hospitalized with covid-19. *N Engl J Med* 2020; 383(24): 2333–2344. doi: 10.1056/NEJMoa2028836.
9. Salama C, Han J, Yau L, et al. Tocilizumab in patients hospitalized with covid-19 pneumonia. *N Engl J Med* 2021; 384: 20–30.
10. Abani O, Abbas A, Abbas F, et al. Tocilizumab in patients admitted to hospital with COVID-19 (RECOVERY): a randomised, controlled, open-label, platform trial. *The Lancet* 2021; 397: 1637–1645.
11. Durán-Méndez A, Aguilar-Arroyo AD, Vivanco-Gómez E, et al. Tocilizumab reduces COVID-19 mortality and pathology in a dose and timing-dependent fashion: a multi-centric study. *Sci Rep* 2021; 11: 19728.
12. Singh AK, Oks M, Husk G, et al. Impact of timing of tocilizumab Use in hospitalized patients With SARS-CoV-2 infection. *Respir Care* 2021; 66(12): 1805–1814. doi: 10.4187/respcare.08779.
13. Aziz M, Fatima R and Assaly R. Elevated interleukin-6 and severe COVID-19: a meta-analysis. *J Med Virol* 2020; 92(11): 2283–2285. doi: 10.1002/jmv.25948.
14. Del Valle DM, Kim-Schulze S, Huang H-H, et al. An inflammatory cytokine signature predicts COVID-19 severity and survival. *Nat Med* 2020; 26: 1636–1643.
15. Wang D, Fu B, Peng Z, et al. Tocilizumab in patients with moderate or severe COVID-19: a randomized, controlled, open-label, multicenter trial. *Front Med* 2021; 15(3): 486–494. doi: 10.1007/s11684-020-0824-3.
16. Salvarani C, Dolci G, Massari M, et al. Effect of tocilizumab vs standard care on clinical worsening in patients hospitalized With COVID-19 pneumonia: a randomized clinical trial. *JAMA Intern Med* 2021; 181: 24–31.
17. Lescure F-X, Honda H, Fowler RA, et al. Sarilumab in patients admitted to hospital with severe or critical COVID-19: a randomised, double-blind, placebo-controlled, phase 3 trial. *Lancet Respir Med* 2021; 9: 522–532.
18. Rosas IO, Bräu N, Waters M, et al. Tocilizumab in hospitalized patients with severe covid-19 pneumonia. *N Engl J Med* 2021; 384: 1503–1516.
19. Veiga VC, Prats JAGG, Farias DLC, et al. Effect of tocilizumab on clinical outcomes at 15 days in patients with severe or critical coronavirus disease 2019: randomised controlled trial. *Br Med J* 2021; 372: n84. doi: 10.1136/bmj.n84.
20. Soin AS, Kumar K, Choudhary NS, et al. Tocilizumab plus standard care versus standard care in patients in India with moderate to severe COVID-19-associated cytokine release syndrome (COVINTOC): an open-label, multicentre, randomised, controlled, phase 3 trial. *Lancet Respir Med* 2021; 9: 511–521.
21. Lin W-T, Hung S-H, Lai C-C, et al. The effect of tocilizumab on COVID-19 patient mortality: a systematic review and meta-analysis of randomized controlled trials. *Int Immunopharmacol* 2021; 96: 107602.
22. Ghosn L, Chaimani A, Evrenoglou T, et al. Interleukin-6 blocking agents for treating COVID-19: a living systematic review. *Cochrane Database Syst Rev* 2021; 3: CD013881.
23. Tharmarajah E, Buazon A, Patel V, et al. IL-6 inhibition in the treatment of COVID-19: a meta-analysis and meta-regression. *J Infection* 2021; 82(5): 178–185. doi: 10.1016/j.jinf.2021.03.008.



24. Juul S, Nielsen EE, Feinberg J, et al. Interventions for treatment of COVID-19: second edition of a living systematic review with meta-analyses and trial sequential analyses (The LIVING project). *PLoS ONE* 2021; 16: e0248132.
25. Zhang J, Hao Y, Ou W, et al. Serum interleukin-6 is an indicator for severity in 901 patients with SARS-CoV-2 infection: a cohort study. *J Transl Med* 2020; 18: 406.
26. Leisman DE, Ronner L, Pinotti R, et al. Cytokine elevation in severe and critical COVID-19: a rapid systematic review, meta-analysis, and comparison with other inflammatory syndromes. *The Lancet Respir Med* 2020; 8: 1233–1244.
27. Sproston NR and Ashworth JJ. Role of C-reactive protein at sites of inflammation and infection. *Front Immunol* 2018; 9: 754.
28. Rokita H, Neta R and Sipe JD. Increased fibrinogen synthesis in mice during the acute phase response: co-operative interaction of interleukin 1, interleukin 6, and interleukin 1 receptor antagonist *Cytokine* 1993; 5: 454–458.
29. Toniati P, Piva S, Cattalini M, et al. Tocilizumab for the treatment of severe COVID-19 pneumonia with hyperinflammatory syndrome and acute respiratory failure: a single center study of 100 patients in Brescia, Italy. *Autoimmun Rev* 2020; 19: 102568.
30. Knorr JP, Colomy V, Mauriello CM, et al. Tocilizumab in patients with severe COVID-19: a single-center observational analysis. *J Med Virol* 2020; 92(11): 2813–2820. doi: 10.1002/jmv.26191
31. Quartuccio L, Sonaglia A, Pecori D, et al. Higher levels of IL-6 early after tocilizumab distinguish survivors from non-survivors in COVID-19 pneumonia: a possible indication for deeper targeting of IL-6. *J Med Virol* 2020; 92(11): 2852–2856. doi: 10.1002/jmv.26149.
32. Campochiaro C, Della-Torre E, Cavalli G, et al. Efficacy and safety of tocilizumab in severe COVID-19 patients: a single-centre retrospective cohort study. *Eur J Intern Med* 2020; 76: 43–49.
33. Sciascia S, Aprà F, Baffa A, et al. Pilot prospective open, single-arm multicentre study on off-label use of tocilizumab in patients with severe COVID-19. *Clin Exp Rheumatol* 2020; 38: 529–532.