



HAL
open science

Chronic Systemic Dexamethasone Regulates the Mineralocorticoid/Glucocorticoid Pathways Balance in Rat Ocular Tissues

Marta Zola, Dan Mejlachowicz, Raquel Gregorio, Marie-Christine Naud, Frédéric Jaisser, Min Zhao, Francine Behar-Cohen

► **To cite this version:**

Marta Zola, Dan Mejlachowicz, Raquel Gregorio, Marie-Christine Naud, Frédéric Jaisser, et al.. Chronic Systemic Dexamethasone Regulates the Mineralocorticoid/Glucocorticoid Pathways Balance in Rat Ocular Tissues. *International Journal of Molecular Sciences*, 2022, 23 (3), pp.1278. 10.3390/ijms23031278 . hal-03577078

HAL Id: hal-03577078

<https://hal.sorbonne-universite.fr/hal-03577078v1>

Submitted on 16 Feb 2022

HAL is a multi-disciplinary open access archive for the deposit and dissemination of scientific research documents, whether they are published or not. The documents may come from teaching and research institutions in France or abroad, or from public or private research centers.

L'archive ouverte pluridisciplinaire **HAL**, est destinée au dépôt et à la diffusion de documents scientifiques de niveau recherche, publiés ou non, émanant des établissements d'enseignement et de recherche français ou étrangers, des laboratoires publics ou privés.



Article

Chronic Systemic Dexamethasone Regulates the Mineralocorticoid/Glucocorticoid Pathways Balance in Rat Ocular Tissues

Marta Zola ^{1,2,†}, Dan Mejlachowicz ^{1,†}, Raquel Gregorio ¹ , Marie-Christine Naud ¹, Frédéric Jaisser ¹, Min Zhao ¹ and Francine Behar-Cohen ^{1,2,*}

- ¹ Centre de Recherche des Cordeliers, Sorbonne Université, Université de Paris, Inserm, From Physiopathology of Retinal Diseases to Clinical Advances, 75006 Paris, France; marta.zola@aphp.fr (M.Z.); mejlachowicz.dan@hotmail.fr (D.M.); raquelgregorio.ufmg@gmail.com (R.G.); marie-christine.naud@crc.jussieu.fr (M.-C.N.); frederic.jaisser@gmail.com (F.J.); elodiecn@gmail.com (M.Z.)
- ² Assistance Publique-Hôpitaux de Paris, Department of Ophthalmology, Ophthalmopôle, Hôpital Cochin, 75014 Paris, France
- * Correspondence: francine.behar@gmail.com
- † These authors contributed equally to this work.



Citation: Zola, M.; Mejlachowicz, D.; Gregorio, R.; Naud, M.-C.; Jaisser, F.; Zhao, M.; Behar-Cohen, F. Chronic Systemic Dexamethasone Regulates the Mineralocorticoid/Glucocorticoid Pathways Balance in Rat Ocular Tissues. *Int. J. Mol. Sci.* **2022**, *23*, 1278. <https://doi.org/10.3390/ijms23031278>

Academic Editors: Natalia V. Gulyaeva and George P. Chrousos

Received: 1 December 2021

Accepted: 20 January 2022

Published: 24 January 2022

Publisher's Note: MDPI stays neutral with regard to jurisdictional claims in published maps and institutional affiliations.



Copyright: © 2022 by the authors. Licensee MDPI, Basel, Switzerland. This article is an open access article distributed under the terms and conditions of the Creative Commons Attribution (CC BY) license (<https://creativecommons.org/licenses/by/4.0/>).

Abstract: Central serous chorioretinopathy (CSCR) is a retinal disease affecting the retinal pigment epithelium (RPE) and the choroid. This is a recognized side-effect of glucocorticoids (GCs), administered through nasal, articular, oral and dermal routes. However, CSCR does not occur after intraocular GCs administration, suggesting that a hypothalamic-pituitary-adrenal axis (HPA) brake could play a role in the mechanistic link between CSCR and GS. The aim of this study was to explore this hypothesis. To induce HPA brake, Lewis rats received a systemic injection of dexamethasone daily for five days. Control rats received saline injections. Baseline levels of corticosterone were measured by Elisa at baseline and at 5 days in the serum and the ocular media and dexamethasone levels were measured at 5 days in the serum and ocular media. The expression of genes encoding glucocorticoid receptor (GR), mineralocorticoid receptors (MR), and the 11 beta hydroxysteroid dehydrogenase (HSD) enzymes 1 and 2 were quantified in the neural retina and in RPE/ choroid. The expression of MR target genes was quantified in the retina (*Scnn1A* (encoding *ENac-α*, *Kir4.1* and *Aqp4*) and in the RPE/choroid (*Shroom 2*, *Ngal*, *Mmp9* and *Omg*, *Ptx3*, *Plaur* and *Fosl-1*). Only 10% of the corticosterone serum concentration was measured in the ocular media. Corticosterone levels in the serum and in the ocular media dropped after 5 days of dexamethasone systemic treatment, reflecting HPA axis brake. Whilst both GR and MR were downregulated in the retina without MR/GR imbalance, in the RPE/choroid, both MR/GR and *11β-hsd2/11β-hsd1* ratio increased, indicating MR pathway activation. MR-target genes were upregulated in the RPE/ choroid but not in the retina. The psychological stress induced by the repeated injection of saline also induced HPA axis brake with a trend towards MR pathway activation in RPE/ choroid. HPA axis brake causes an imbalance of corticoid receptors expression in the RPE/choroid towards overactivation of MR pathway, which could favor the occurrence of CSCR.

Keywords: retina; central serous chorioretinopathy; glucocorticoid; mineralocorticoid

1. Introduction

Glucocorticoids (GC) remain amongst the most widely prescribed class of drugs in many fields of medicine for their potent anti-inflammatory effects. The early recognition of the severe side effects induced by cortisol [1] has led to the development of synthetic or semi-synthetic cortisol derivates with increased anti-inflammatory effects and reduced mineralocorticoid side-effects [2]. Indeed, hypertension and hydro-sodium retention have been associated with the activation of the mineralocorticoid pathway [3] while beneficial

anti-inflammatory effects have been associated with the activation of the glucocorticoid receptor, leading to the classical potency glucocorticoids classification table [3–5].

The ocular side effects, such as cataract [6] and glaucoma [7,8] have also been recognized at early stages [9] and are still associated with both systemic and local routes and are not alleviated by synthetic GCs. Another less frequent ocular side-effect of GCs is central serous chorioretinopathy (CSCR), a chorioretinal disease characterized by the occurrence of serous retinal detachments (SRD) secondary to a focal disruption of the retinal pigment epithelium (RPE) barrier and often associated with detachments of the pigment epithelium (PED) and an increased choroidal thickness [10,11]. However, in contrast to the other GCs-induced side effects, the route of GCs administration influences the risk of CSCR. The nasal, articular, oral and dermal routes favor CSCR [12–21] but not the high and sustained intraocular GCs [22,23]. This clinical observation led us to hypothesize that it is not the increase in ocular GCs levels but rather a consequence of systemic corticosteroids on ocular corticosteroids that may be the link between CSCR and corticosteroid therapy.

Cortisol binds with a similar affinity to both glucocorticoid receptor (GR) and to MR [2] and in the eye, as no cortisol binding globulin is present [24], the availability of free cortisol mostly relies on the cortisol/cortisone balance that is regulated by the activity of the 11-beta hydroxysteroid dehydrogenase type 1 and 2 enzymes (HSD-1 and HSD-2) [25,26]. GCs also activate MR at various intensities depending on the molecules, the drug doses and on the level of expression and activity of MR in specific cells and tissues. In non-classical MR sensitive tissues, MR activation can exert deleterious effects, as shown in the brain [27], the vessels, the skin [28], the heart [29,30] and the retina [11,31,32]. Mineralocorticoid receptor (MR) pathway activation by GCs or by cortisol has been proposed as a potential mechanism linking GCs with CSCR since aldosterone and/or MR pathway activation in animal models induce features of CSCR, although they do not completely recapitulate the human disease [11,32,33]. However, there is no clinical evidence that MR is overactivated in eyes with CSCR.

The reason why intraocular GCs is not a risk factor for CSCR as compared to systemic administration remains unexplained and whether the hypothalamic-pituitary-adrenal axis (HPA) brake and subsequent adrenal insufficiency, that is not induced by intraocular GCs could be involved in CSCR pathogenesis has not been questioned. In the present study, we studied the corticosterone ocular levels and the corticoid receptors balance upon a brake of the hypothalamic-pituitary-adrenal axis after systemic dexamethasone treatment in rats. Our results indicate that systemic GCs and endogenous corticosterone differentially influence the expression of the gluco- and mineralocorticoid receptors in different ocular tissues and promote an imbalance towards a hyper activation of the mineralocorticoid pathway in RPE/choroid. Potential link with CSCR is discussed.

2. Results

2.1. Correlation between Serum and Ocular Corticosterone and Dexamethasone Levels

The mean corticosterone serum level in control untreated rats at baseline was 21.2 ± 6.5 ng/mL [14.7–32.04, $n = 8$]. As expected [34], after 5 days of dexamethasone systemic injection, the serum corticosterone level significantly dropped to 1.2 ± 1.4 ng/mL [0–3.8, $n = 16$, $p < 0.0001$]. Interestingly, in saline injected rats, serum corticosterone also dropped to 13 ± 2 ng/mL [10.1–14.5, $n = 4$], a level that was not significantly lower than baseline, but also not significantly different from the corticosterone level at day 5 in rats treated with dexamethasone ($p = 0.007$) (Kruskal–Wallis test $p < 0.0001$, followed by Dunn's comparisons) (Figure 1A).

In ocular media, mean corticosterone level at baseline was 2.9 ± 1.2 ng/mL [1.3–5.4, $n = 7$]. Significantly, it dropped to 0.4 ± 0.4 ng/mL [0–1.3, $n = 8$], 5 days after systemic dexamethasone treatment, paralleling the serum drop ($p < 0.002$). In saline treated rats, mean corticosterone ocular level non significantly dropped to 1.45 ± 1.3 ng/mL [0–2.9, $n = 4$] ($p = 0.46$). Ocular corticosterone levels were not significantly different in saline and

dexamethasone treated eyes ($p = 0.5$) (Kruskal–Wallis test $p < 0.0006$, followed by Dunn’s comparisons) (Figure 1B).

There was a significant correlation between corticosterone serum levels and ocular levels (Spearman correlation, $r = 0.76$, $p = 0.0001$), the ocular corticosterone level being around 10% of the serum level (Figure 1C). The mean dexamethasone serum level after 5 days of dexamethasone systemic administration was 60.1 ± 18.9 ng/mL [18–83.9, $n = 14$] and the ocular mean level was 10.7 ± 4.09 ng/mL [6.6–17.6, $n = 7$] (Figure 1D). There was no significant correlation between dexamethasone ocular and serum levels, although a tendency towards an inverse correlation was observed (Spearman correlation, $r = -0.28$, $p = 0.55$) (Figure 1E).

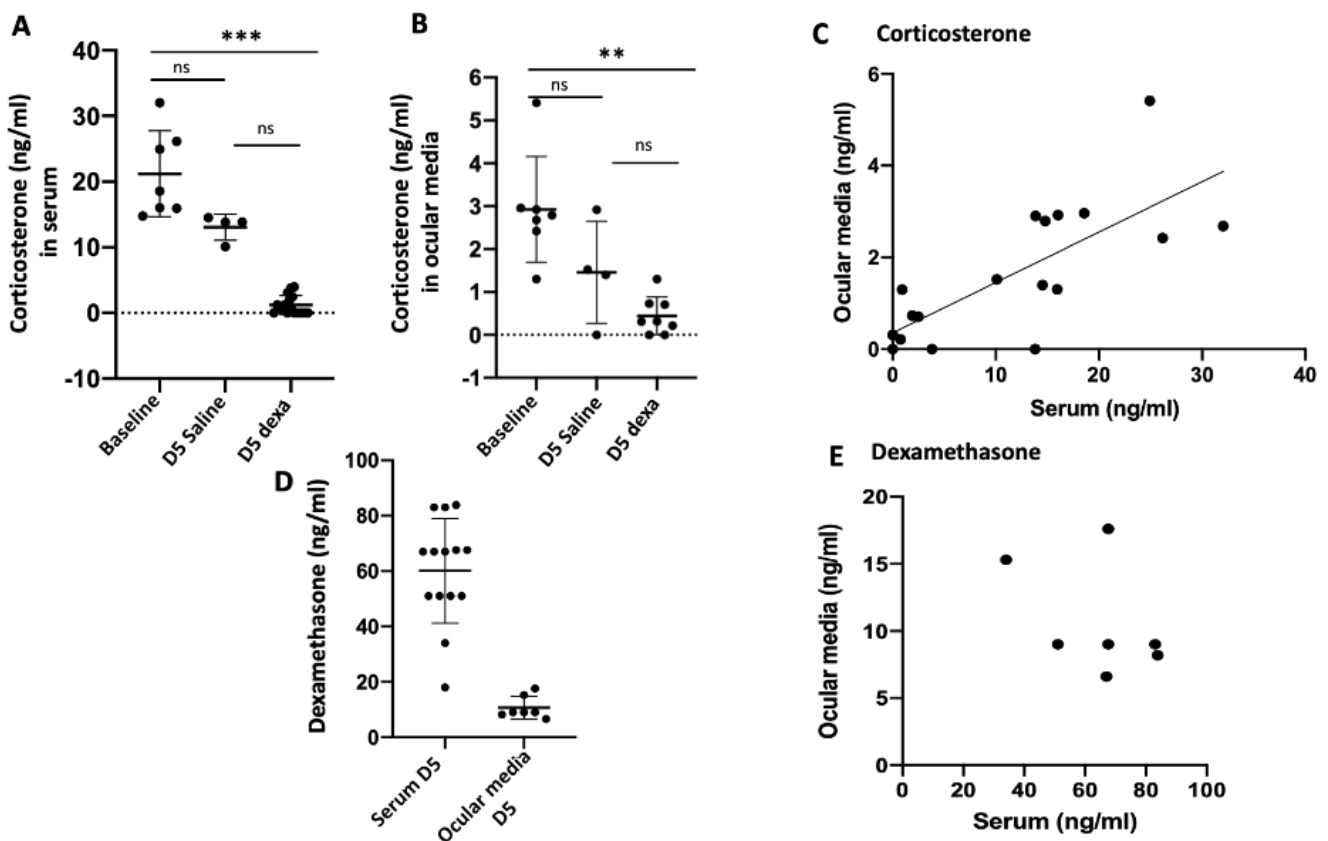


Figure 1. Corticosterone and dexamethasone levels in the rat serum and ocular media. Corticosterone in the serum (A) and ocular media (B) at baseline ($n = 7$) and after 5 days of daily injection of dexamethasone (D5) ($n = 16$) or saline ($n = 5$). Spearman correlation between corticosterone ocular and serum levels ($r = 0.76$, $p = 0.0001$) (C). Dexamethasone serum ($n = 14$) and ocular media ($n = 7$) after 5 days of daily injection of dexamethasone (D). Spearman correlation between dexamethasone ocular and serum levels ($r = -0.28$, $p = 0.55$) (E), ** $p < 0.001$, *** $p < 0.0001$, ns non significant.

2.2. Corticosteroid Receptors and HSDs Expression in Ocular Tissues after Dexamethasone Treatment

In the neural retina, at 5 days after systemic treatment, *Nr3c1* encoding GR expression was significantly reduced both after the administration of saline ($p < 0.001$) and dexamethasone ($p < 0.01$) as compared to untreated rats. Expression of *Nr3c2* encoding MR expression was also significantly downregulated in saline and dexamethasone groups ($p < 0.001$). The *Nr3c2/Nr3c1* (referred as MR/GR) expression balance did not change significantly. In the retina of rats treated with dexamethasone, a significant down-regulation in *11 β -hsd1* ($p > 0.01$) and an up-regulation in *11 β -hsd2* gene expression ($p < 0.001$) was measured. A non-significant trend towards a similar regulation was observed after saline treatment (Figure 2A).

In the RPE/choroid complex, the non-significant up-regulation of *Nr3c2* expression translated into a significant increase in the *Nr3c2/Nr3c1* ratio in eyes of rats treated with dexamethasone ($p < 0.01$). Whilst *11β-hsd1* expression was down-regulated in the RPE/choroid from saline treated rats ($p < 0.01$), *11β-hsd2* expression was significantly up-regulated in dexamethasone-treated rats ($p < 0.0001$) (Figure 2B) (analyses were performed using the non-parametric Kruskal–Wallis ANOVA test followed by a Dunn’s comparison test).

Taken together, these data indicate that in the RPE/choroid from rats treated with systemic dexamethasone, the transcriptional regulations of corticoid receptors and HSD enzymes favor a balance towards an activation of MR pathway and a reduction of GR pathway activation. In rats treated with saline, a similar trend is observed suggesting that these regulations could result, at least in part, from reduction of serum corticosterone levels in both saline and dexamethasone treated rats. In saline-treated rats, the very low corticosterone ocular levels together with a down-regulation of GR indicate a low activity of glucocorticoid pathway.

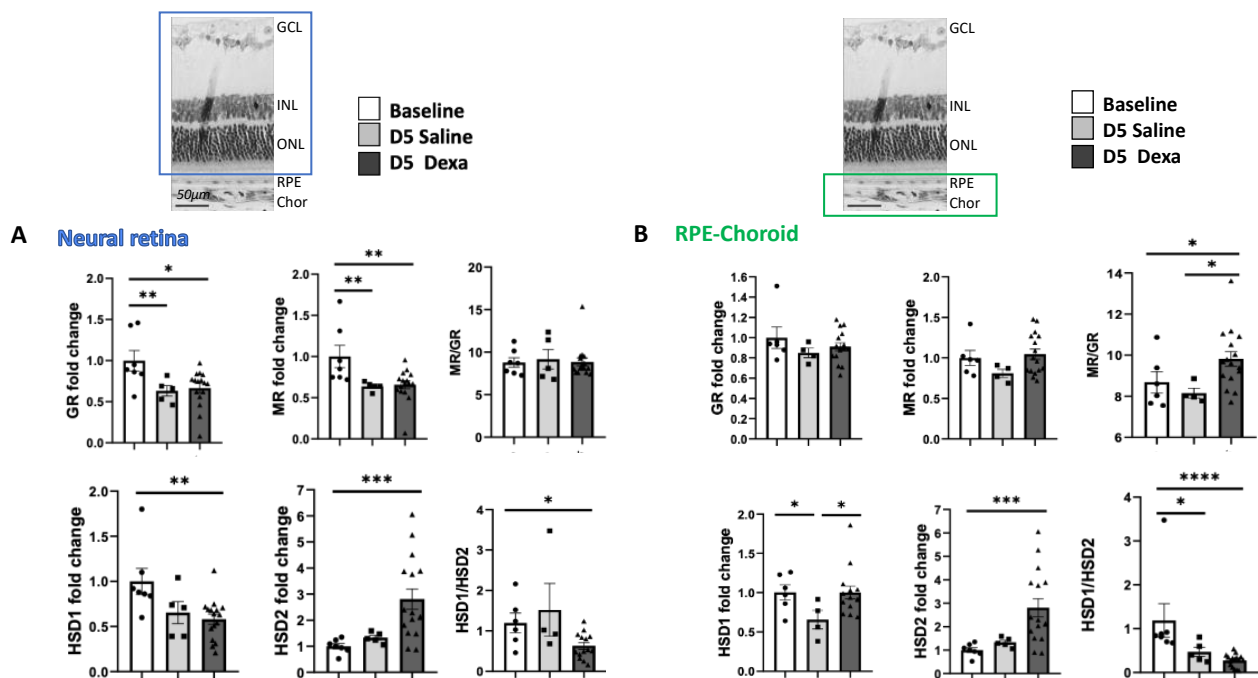


Figure 2. Corticoid receptors and hydroxysteroid dehydrogenase gene expression in the retina and RPE/choroid. (A) neural retina: *Nr3c1*, encoding GR, *Nr3c2* encoding MR and *11β-hsd1* and 2 expression at baseline ($n = 7$), after 5 days of daily injection of dexamethasone ($n = 16$), or saline ($n = 6$); (B) RPE/choroid: *Nr3c1*, encoding GR, *Nr3c2* encoding MR and *11β-hsd1* (HSD1) and 2 (HSD2) expression at baseline ($n = 7$), after 5 days of daily injection of dexamethasone ($n = 16$), or saline ($n = 6$), * $p < 0.05$, ** $p < 0.01$, *** $p < 0.001$, **** $p < 0.0001$.

In the iris/ciliary body complex, only dexamethasone treatment induced a significant down-regulation of *Nr3c1* ($p < 0.01$) and a higher *Nr3c2/Nr3c1* ratio, together with a significant increase in *11β-hsd2* expression ($p < 0.01$) (Figure 3) Saline treatment did not induce significant changes in *Nr3c1*, *Nr3c2*, *11β-hsd1* or *11β-hsd2* expression.

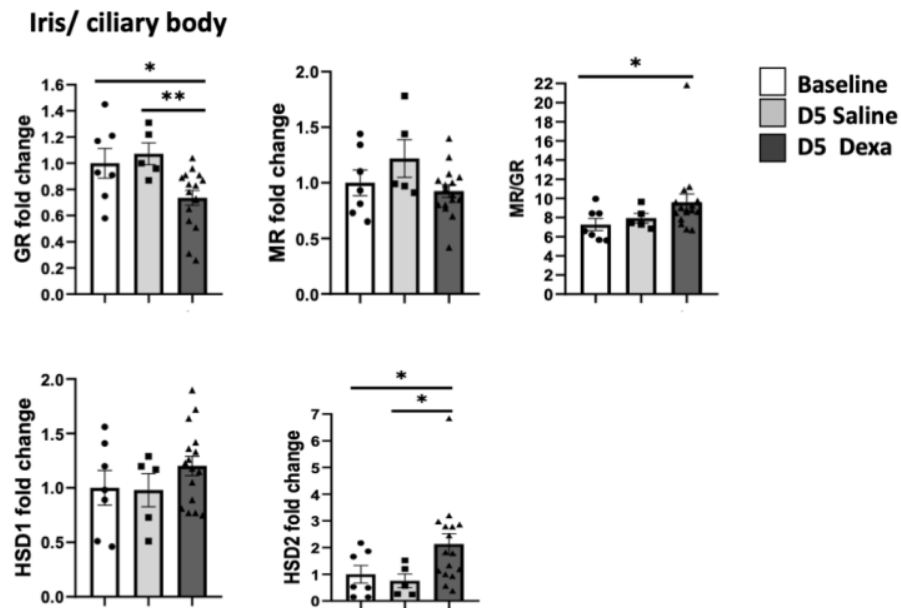


Figure 3. Corticoid receptors and hydroxysteroid dehydrogenase gene expression in the iris/ciliary body. *Nr3c1*, encoding GR, *Nr3c2* encoding MR and *11β-hsd1* and 2 expression at baseline ($n = 7$), after 5 days of daily injection of dexamethasone ($n = 16$), or saline ($n = 6$), * $p < 0.05$, ** $p < 0.01$.

2.3. Regulation of MR-Induced Genes in the Retina and RPE/Choroid

To evaluate whether the imbalance of expression in the *Nr3c2/Nr3c1* and *11β-hsd1/11β-hsd2* ratio translate into transcriptional consequences, we have quantified the expression of genes known to be regulated by GR/MR pathways in the neural retina such as *Scnn1A* encoding the Na⁺ channel ENac-α the K⁺ channel *Kir4.1*, as well as the water channel *Aqp4* [35,36]. As shown in Figure 4, the three genes were significantly down-regulated in the neural retina in rats after 5 days of dexamethasone treatment and *Scnn1A* and *Aqp4* were significantly down-regulated also after saline injection, which is in line with the downregulation of genes encoding both GR and MR after both treatments, but without MR/GR imbalance.

Neural retina

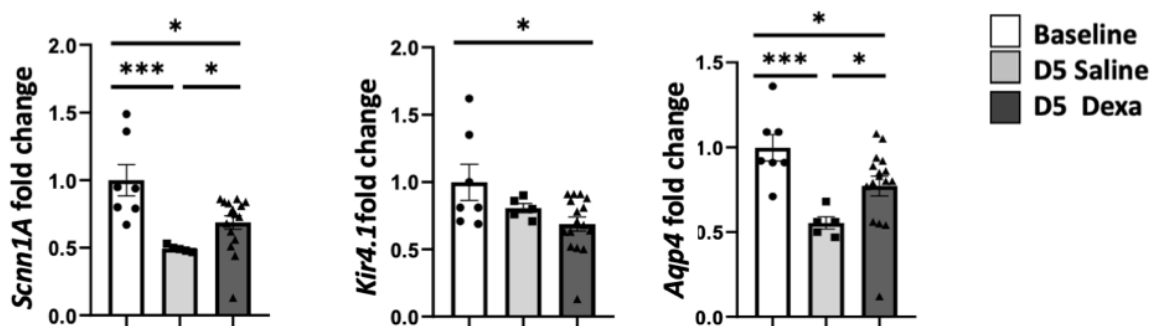


Figure 4. Regulation of MR-induced genes in the neural retina. *Scnn1A* encoding ENac-α Kir4.1 and *Aqp4* expression at baseline ($n = 7$), after 5 days of daily injection of dexamethasone ($n = 16$), or saline ($n = 6$), * $p < 0.05$, *** $p < 0.001$.

In the RPE/choroid complex, the expression of *Plaur* ($p < 0.01$) and *Fosl-1* was significantly up-regulated after dexamethasone treatment, whilst *Ptx3* was instead down-regulated after saline treatment *Omg* was significantly down-regulated in dexamethasone treated rat (Figure 5). Other genes such *Shroom2*, *Ngal*, and *Ptx3* were up-regulated in

dexamethasone-treated rats as compared to saline only (Figure 5) (analysis were performed using the non-parametric Kruskal–Wallis ANOVA test followed by a Dunn’s comparison test).

These results indicate that genes were shown to be regulated by MR pathway activation in RPE cells [37], following the same regulations in the RPE/choroid of dexamethasone treated rats.

RPE-choroid

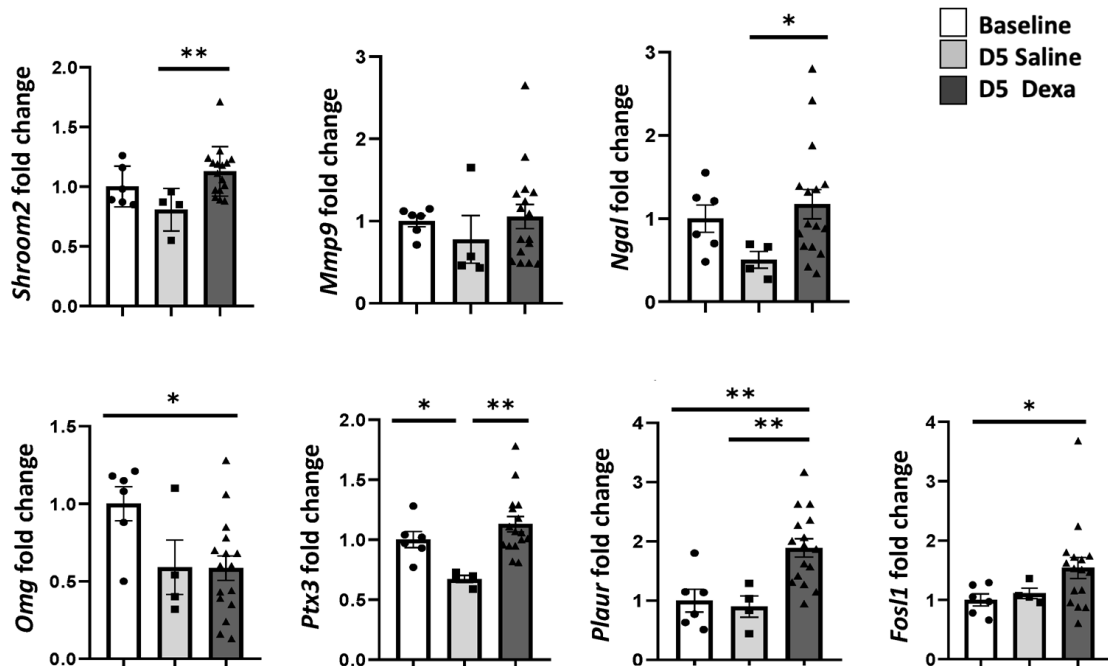


Figure 5. Regulation of MR-induced genes in the RPE/choroid. Expression of *Shroom 2*, *Ngal*, *Mmp9* and *Omg*, *Ptx3*, *Plaur* and *Fosl-1* in the RPE/choroid of rats at baseline ($n = 7$), after 5 days of daily injection of dexamethasone ($n = 16$) or saline ($n = 6$), * $p < 0.05$, ** $p < 0.01$.

3. Discussion

In this paper, we have measured the corticosterone levels in ocular media of rats at baseline and after 5 days of systemic treatment with dexamethasone at 1 mg/kg to mimic a frequent clinical situation, in which systemic corticotherapy causes adrenal insufficiency. At baseline, corticosterone level in ocular media is around 1/10 of the serum level and it correlates well with the serum level. Similar results were found in dogs, in which 61% of the variation in aqueous humor cortisol levels could result from plasmatic variations [31]. Since only the free fraction of cortisol can cross the blood-ocular barriers, it is expected to measure lower cortisol or corticosterone in ocular media as compared to blood. The level of corticosterone measured in the ocular media of rats was in the range of previous studies [24,32]. In the eye, the activity of cortisol is regulated by the HSD-1 and 2 enzymes, that are both expressed in the rat retina, RPE/choroid [33,38] and iris/ciliary body [32]. In the rat, after 5 days of dexamethasone treatment, the hypothalamo-pituitary-adrenal axis brake is identified by the very low level of corticosterone in the serum. Similarly, in the ocular media, corticosterone levels are very low, even below detectable levels in some rats. Corticosterone levels also decreased, although to a lesser extent after repeated daily injection of saline in awoken rats, submitted to repeated restraint stress at a fixed hour for 5 days, which corresponds to a chronic but familiar stressor. Indeed, under such stress conditions, corticosterone was shown to decrease, as compared to an unfamiliar stressor that could have an inverse effect on corticosterone levels [39,40]. Such low corticosterone levels also suggested by low salivary amylase activity in rats submitted to similar stressor [41] indicate changes in the activity of the HPA axis in response of a chronic stress, which could

mimic the administration of exogenous GC. Paralleling the serum drop, corticosterone level also decreased in the ocular media.

In the iris/ciliary body of dexamethasone treated rats, the transcriptional regulations tend to favor a reduction of the GR pathway activation with a reduction in *Nr3c1* expression and an increased *11 β -hsd*. In these tissues, more exposed to the systemic circulation, *Nr3c2* was not significantly regulated in dexamethasone or in saline injected rats suggesting that specific regulation of the corticoid receptors expression might occur in various ocular tissues and even cells.

In the neural retina, the expression of both *Nr3c1* and *Nr3c2* is down-regulated not only in the group of rats treated with dexamethasone, but also in the group of rats treated with saline, indicating that the downregulation does not result from ocular dexamethasone but could result from the decrease in ocular corticosterone levels. In cell cultures as well as in vivo, cortisol and synthetic glucocorticoids were shown to induce the regulation of GR in a differential manner and with different kinetics [42–44]. It cannot be discounted that the downregulation of *Nr3c1* in saline-treated rats is a consequence of a transient increase in corticosterone that could have preceded the reduction of serum corticosterone observed at the end of the experiment since a return to the basal state can take several days. Similarly, the mechanisms of MR down-regulation are unclear. In amphibian kidney cells, dexamethasone was shown to down-regulate MR [35] and in LPS-induced uveitis model, we showed that MR down-regulation in iris/ciliary body coincided with high corticosterone levels together with an increase expression of *11 β -hsd1* [32] suggesting that both endogenous and exogenous corticoids could also regulate MR expression. On the other hand, in the Goto-Kakizaki diabetic rat model, we observed both a reduced cortisone/cortisol ratio and an increased MR expression in the neural retina [36] showing that the ligand levels and the GR and MR expression levels might not be regulated in a simple manner. In our experiments, *Nr3c2* was also downregulated in the neural retina of rats treated with saline, in which corticosterone levels are reduced in the ocular media and in the serum but in which no dexamethasone could influence *Nr3c2* or *Nr3c1* expression. Other mechanisms such as chronic stress and potential associated inflammation could explain these regulations [37].

In the neural retina, the *Nr3c2/Nr3c1* balance remained stable after dexamethasone treatment, although both GR and MR were down-regulated, which was reflected in the down-regulation of genes such as *Scnn1A* (encoding ENac-alpha), *Kir4.1* and *Aqp4* that are up-regulated by both GR and MR activation in glial Müller cells and in rat retinal explants [35]. In dexamethasone-treated rats, the low levels of ocular dexamethasone could have partially counterbalanced the downregulation of *Scnn1A*, *Kir4.1* and *Aqp4*. It cannot be excluded that other mechanisms, unrelated to GR/MR pathway and directly linked to systemic sodium levels, could have played a role in the ion and water channels regulations observed in the neural retina of saline injected rats. This hypothesis requires further explorations.

In the RPE/choroid complex, the slight *Nr3c2* expression increase in dexamethasone treated rats translates into a significant imbalance towards a higher *Nr3c2/Nr3c1* ratio. The reduced *11 β -hsd1/11 β -hsd2* balance and the increased *Nr3c2/Nr3c1* indicate a potential MR pathway overactivation in the RPE/choroid complex. To further confirm this imbalance towards MR activation, we tested the expression of genes that we previously identified as MR-target genes in human RPE cells derived from iPSc using an unbiased transcriptomic approach [37]. In the RPE/choroid, *Plaur* and *Fos1* were upregulated and *Omg* was down-regulated as previously shown by RPE cells, stimulated by aldosterone or by cortisol + GR antagonists to mimic the effects of cortisol on MR [37]. FOS such as 1 AP-1 transcription factor subunit protein controls the expression of *Plaur* (uPAR) [45]. The uPAR is expressed at the basolateral membrane of RPE cells [46] and activation of uPA-uPAR pathways favors choroidal neovascularization [47] and induces RPE epithelial to mesenchymal transition and proliferation [39]. The upregulation of this pathway could be involved in the RPE barrier breakdown, that is, one of the cardinal features of CSCR. Shroom2 is a protein

involved in the pigmentation and of RPE cells [48] and pigmentary changes are part of CSCR phenotype. The down regulation of *Omg* in RPE cells, which encodes oligodendrocyte-myelin glycoprotein, could indicate a role for the RPE in the maintenance of choroidal nerves, which control the choroidal blood flow [49] through a secreted isoform of OMG [50]. Alteration of choroidal vasculature is the other cardinal feature for CSCR.

Other genes encoding proteins involved in inflammation and oxidative stress such as pentraxin 3 and lipocalin 2 were mostly down regulated in RPE/choroid from saline-injected rats. Interestingly, we found that systemically low lipocalin levels could be a biomarker for CSCR in cohorts of patients that were not under GCs treatments [51]. Since dexamethasone is a known inducer of pentraxin 3 and lipocalin 2 expression [52], a partial counter-balance could have compensated their reduced expression due to low GR/MR expression in eyes from dexamethasone treated rats.

These results indicate that chronic systemic dexamethasone treatment causes an over-activation of the MR pathway, specifically in the RPE/choroid complex and not in the retina. In a mouse transgenic model that overexpresses the human MR, we observed pathologic changes in the RPE/choroid that mimic the pachychoroid phenotype, without pathologic changes in the neural retina. These results indicate that chronic systemic dexamethasone treatment causes an overactivation of the MR pathway, specifically in the RPE/choroid complex and not in the retina [33,53,54].

We acknowledge weaknesses in our study. Aldosterone could not be measured due to the low volume of ocular media and methods used in this study. Further studies will use mass spectrometry to provide a broader analysis of all neurosteroids and aldosterone in the ocular media. We have not yet validated the regulated target genes at the protein level using either immunohistochemistry or western-blotting, which will be the subject of another study, that will include many other controls including various concentrations of salt in the vehicle.

Taken together, our results show that systemic chronic treatment with dexamethasone, at a dose that induces HPA axis brake, induces variable imbalance in *Nr3c2/Nr3c1* and *11 β -hsd1/11 β -hsd2* gene expression in ocular tissues, with a trend towards MR pathway overactivation in RPE/choroids, where pathologic changes are observed in patients under glucocorticoids, who develop CSCR. This is in line with the surprising finding that the local instillation of glucocorticoid drops, together with MR antagonists could have beneficial effects in some of severe CSCR patients [40] and could support the beneficial effects of MR antagonists observed by some authors in CSCR patients [55–57].

In the ophthalmic literature, stressful psychological events that favor the occurrence of CSCR episodes [11], have been intuitively linked to high systemic cortisol, creating the link with GCs-induced CSCR. Interestingly, none of the studies could identify high serum cortisol levels in CSCR patients and hair-cortisol was not increased in this population [58]. We postulate that under chronic stress conditions, a rumination and depression state, frequently observed in CSCR patients [41], and associated with a reduced activity of the HPA axis [33,59,60], low endogenous cortisol could favor the occurrence of the disease in predisposed patients. In other words, the link between exogenous systemic GCs treatment and psychological stress in patients with CRSC could be a reduction of systemic cortisol, or a deregulation of its circadian production and not an increase in systemic cortisol (Figure 6). Such adrenal suppression could translate into an imbalance in MR/GR pathway activation in the RPE/choroid and subsequent deleterious consequences, leading to CSCR (Figure 6).

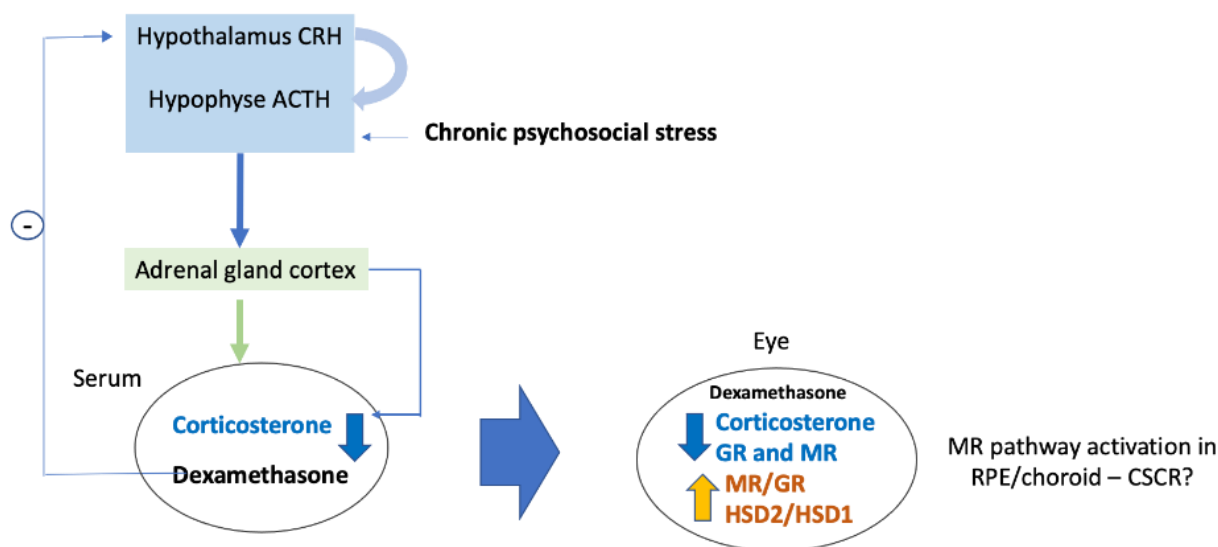


Figure 6. Schematic representation of the ocular consequences of HPA axis brake on ocular GR/MR pathways [34,49,61].

4. Material and Methods

4.1. Animals

All experiments were performed in accordance with the European Communities Council Directive 86/609/EEC and French national regulations and approved by local ethical committees (#4488 and #2541, Charles Darwin). Animals were kept in pathogen-free conditions with food, water and litter, and housed in a 12-hour/12-hour light/dark cycle.

Lewis rats (Ecully, France) between 8 and 12 weeks-old were divided into three groups, the control group that was only observed, the placebo group receiving saline sub-cutaneous injections, and the treatment group receiving subcutaneous dexamethasone injections.

4.2. Experimental Scheme

A blood sample was obtained at baseline from all rats between 9 and 10 AM. The subcutaneous injections were administered daily at 9 AM in the morning for five consecutive days. Rats were then sacrificed at day 5 in the afternoon (between 4 and 5 PM, at a time expected to be the corticosterone peak [50]). Blood samples were obtained at the time of sacrifice, and the eyes were enucleated and dissected to recover intraocular fluids and ocular tissues [Figure 7]. Aqueous humor and vitreous from both eyes of each rat were pooled, whereas the iris and ciliary body complex, neural retina, choroid and RPE complex were carefully dissected and isolated separately from each eye. Samples were snap-frozen in liquid nitrogen and stored at -80°C for adequate tissue preservation.

Dexamethasone phosphate sodium 4 mg/mL (Mylan, Paris) was injected subcutaneously with a dosage of 1mg/kg/day for five days in the treatment group. We chose a high dose of dexamethasone for 5 consecutive days because it was previously published that corticosterone drop secondary to adrenal atrophy was observed in rats already 5 days after systemic treatment [34]. This treatment regimen could thus mimics the adrenal insufficiency potentially occurring in patients treated with systemic, nasal, intraarticular administration, although high variability may occur in the HPA axis response in humans [62]. A saline solution (NaCl 0.9%) volume was added to normalize the injected volume to 200 μL . In the placebo group, rats received an injection of 200 μL of saline solution. The route and mode of administrations were identical. Rats in the treatment and control groups were anesthetized by intramuscular injection of ketamine (40 mg/kg) and Xylazine (4 mg/kg) at baseline and a blood sample was retrieved from the major vein at the base of the tail to obtain serum samples (Figure 7). Rats in the control group were sacrificed at baseline, blood samples were collected immediately after the death of the animal.

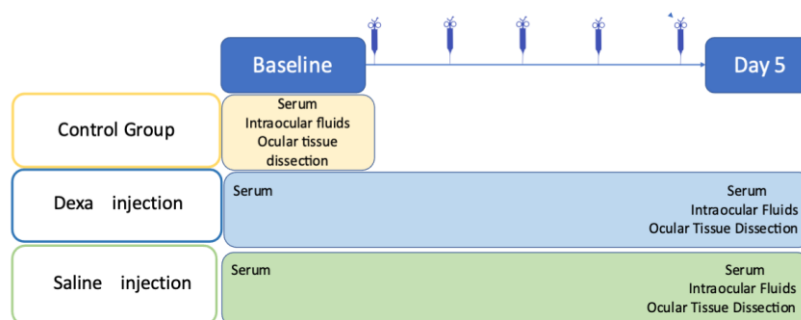


Figure 7. Schematic representation of the experiments. Serum was extracted from blood samples, intraocular fluids include aqueous humour and vitreous from each eye. Ocular tissue dissection separated the iris-ciliary body complex, the neural retina, the retinal pigment epithelium (RPE)-choroid complex or each eye separately.

4.3. Corticosterone and Dexamethasone Quantification

The Elisa corticosterone kit (KGE009, R&D Systems, Abingdon Science Park Abingdon, OX14 3NB) 96-wells was used to determine the concentration of the total corticosterone, both bound and free, according to the manufacturer instructions. Rasd1 (Ras related dexamethasone induced 1) Elisa (OKEH06148, Aviva Systems Biology) was used to quantify indirectly dexamethasone in rat serum and ocular fluids as Rasd1 is a small GTPase protein that is induced by dexamethasone [63].

4.4. Quantitative PCR

Total RNA was isolated from tissues using the RNeasy Mini Kit (Cat. Nb. 74106, QIAGEN) including DNase I treatment (Cat. Nb. 79254, QIAGEN) according to manufacturer's instructions. First-strand complementary DNA was synthesized from the total mRNA using random primers (ThermoFisher Scientific) and SuperScript II reverse transcriptase (ThermoFisher Scientific). Transcript levels were analyzed by quantitative real-time PCR performed in QuantStudio™ 5 Real-Time PCR (Applied Biosystems, Foster City, CA, USA) with SYBR Green detection. Delta CT threshold calculation was used for relative quantification of results.

We have analyzed the expression of the gene *Nr3c2* (encoding MR), *Nr3c1* (encoding GR), *11 β -hsd1*, *11 β -hsd2* in the neural retina, the RPE/choroid complex and the iris/ ciliary body complex.

In the neural retina, we tested the expression of genes known to be regulated by MR and GR activation in the retina such as *Scnn1A*, encoding the Na⁺ channel ENaC-, the K⁺ channel *Kir4.1*, as well as the water channel *Aqp4* [33,64].

In RPE/ choroid complex, we quantified the expression of genes shown to be up-regulated by aldosterone or MR pathway activation in human RPE cells derives from iPS such as *Plaur* encoding the urokinase plasminogen activator receptor (uPAR) and *Fosl1* encoding the FOS like 1 AP-1 transcription factor subunit protein, *Ptx3* encoding pentraxin 3 and *Omg* that encodes the oligodendrocyte myelin glycoprotein and that was down-regulated by aldosterone or Cortisol+ RU486 [65]. We also tested genes showed to be upregulated in the RPE/choroid complex after intravitreal injection of aldosterone such as *Ngal* encoding lipocalin 2 and *Mmp9* and the Shroom Family Member 2 *Shroom2*, that is implicated in amiloride-sensitive sodium channel activity [66]. *Hprt1*, *Ubc*, *18S* were used as reference genes (Table 1).

Table 1. Shows the list of primers used in this study.

Gene Name	Forward/Reverse	Sequences
18S	Forward	TGCAATTATTCCCCATGAACG
18S	Reverse	GCTTATGACCCGCACTTACTGG
Ubc	Forward	ATCTAGAAAGAGCCCTTCTTGTGC
Ubc	Reverse	ACACCTCCCCATCAAACCC
Hprt1	Forward	GCGAAAGTGAAAAGCCAAGT
Hprt1	Reverse	GCCACATCAACAGGACTCTTGTAG
Nr3c1	Forward	AACATGTTAGGTGGGCGTCAA
Nr3c1	Reverse	GGTGTAAGTTTCTCAAGCCTAGTATCG
Nr3c2	Forward	TAAGTTTCCCCACGTGGTTC
Nr3c2	Reverse	ATCCACGTCTCATGGCTTTC
11b-Hsd1	Forward	GAAGAAGCATGGAGGTCAAC
11b-Hsd1	Reverse	GCAATCAGAGGTTGGGTCAT
11b-Hsd2	Forward	TGCTGGCTGGATCGCGTTGTC
11b-Hsd2	Reverse	CACAGTGGCCAGCACCGTGAA
Aqp4	Forward	CGGTTTCATGGAACCTCACT
Aqp4	Reverse	CATGCTGGCTCCGGTATAAT
Kir4.1	Forward	CAAAGAAGAGGGCTGAGACG
Kir4.1	Reverse	TTGAGCCGAATATCCTCACC
Scnn1A	Forward	TCATGCTGCTACGCCGGTTC
Scnn1A	Reverse	TCCATCAGTTTACAAGGGAG
Ngal	Forward	TCACCCTGTACGGAAGAACC
Ngal	Reverse	GGTGGGAACAGAGAAAACGA
Mmp9	Forward	CTGCCTGCACCACTAAAGG
Mmp9	Reverse	GAAGACGAAGGGGAAGACG
Omg	Forward	CAACACAATGCAGCTGAGCA
Omg	Reverse	CCATCAAAGCCATAATGTCGTCT
Ptx3	Forward	TACCCGCAAGGCTGTGAAAC
Ptx3	Reverse	GGGTTCCACTTGGTGCCATA
Plaur	Forward	CTGAAGTGCTGCAACTTAC
Plaur	Reverse	AGCACATCTAAGCCTTAGC
Fosl1	Forward	GAGAAAATATGTCCCTCTGC
Fosl1	Reverse	TTCTAGGCTAGTTAAAGGGC
Shroom2	Forward	CCTATTATAGCACATCAGCC
Shroom2	Reverse	TGAGCTCTTGCTTCTTAATG

4.5. Statistical Analysis

Quantitative data were expressed as mean \pm SE. Statistical analysis was made using the Graphpad Prism 5 program (Graphpad Software, San Diego, CA, USA). $P < 0.05$ was considered significant. Groups were compared using Kruskal-Wallis test followed by a Dunn's multiple comparison test. $P < 0.05$ was considered significant.

5. Conclusions

In conclusion, although systemic exposures to exogenous GCs have been considered as risk factors for the development of CSCR, the mechanisms of this risk remain poorly understood. The fact that intraocular injection of glucocorticoids does not increase the risk of CSCR suggests that the consequences of the HPA axis regulations for ocular tissues may be involved. Our results are in line with this hypothesis, and they suggest that it could be rather a lack of activation of the glucocorticoid pathway and an imbalance in favor of activation of the mineralocorticoid pathway in RPE/choroid, observed in response to the HPA axis brake that could favor CSCR. Further studies are needed to confirm this hypothesis.

Author Contributions: Conceptualization F.B.-C.; methodology, F.B.-C., D.M., R.G.; validation, D.M., M.Z. (Marta Zola); formal analysis, M.Z. (Min Zhao), D.M., R.G.; investigation, M.Z. (Min Zhao), D.M., M.Z. (Marta Zola), M.-C.N.; resources, F.B.-C.; writing—original draft preparation, F.B.-C., M.Z. (Min Zhao), D.M.; writing—review and editing, F.J., M.Z. (Marta Zola); supervision, F.B.-C., M.Z.

(Marta Zola); funding acquisition, F.B.-C. All authors have read and agreed to the published version of the manuscript.

Funding: We thank UNADEV and ANR ROCK-SUR-MER (ANR-15-CE18-0032-03), MR-A-MD (PCRE-2020-20-CE17-0034) for the financial support. We thank The Abraham J. & Phyllis Katz Foundation for their financial support for conducting research.

Institutional Review Board Statement: This study was approved by the French local ethical committees Charles Darwin for animal experiments: Approval #4488 and #2541.

Informed Consent Statement: Not applicable.

Data Availability Statement: All raw data are available upon reasonable request.

Conflicts of Interest: MZ, FBC and FJ are cited as inventors in patents protecting the use of mineralocorticoid receptor antagonists in the treatment of CSCR.

References

1. Aliotta, N. ACTH and cortisone, dangerous weapons. *Clin. Nuova Rass. Prog. Med. Int.* **1952**, *14*, 1–4. [[PubMed](#)]
2. Lan, N.C.; Graham, B.; Bartter, F.C.; Baxter, J.D. Binding of Steroids to Mineralocorticoid Receptors: Implications for in Vivo Occupancy by Glucocorticoids. *J. Clin. Endocrinol. Metab.* **1982**, *54*, 332–342. [[CrossRef](#)] [[PubMed](#)]
3. Campen, T.J.; Vaughn, D.A.; Fanestil, D.D. Mineralo- and Glucocorticoid Effects on Renal Excretion of Electrolytes. *Pflug. Arch.* **1983**, *399*, 93–101. [[CrossRef](#)] [[PubMed](#)]
4. Grossmann, C.; Scholz, T.; Rochel, M.; Bumke-Vogt, C.; Oelkers, W.; Pfeiffer, A.F.H.; Diederich, S.; Bahr, V. Transactivation via the Human Glucocorticoid and Mineralocorticoid Receptor by Therapeutically Used Steroids in CV-1 Cells: A Comparison of Their Glucocorticoid and Mineralocorticoid Properties. *Eur. J. Endocrinol.* **2004**, *151*, 397–406. [[CrossRef](#)]
5. Baxter, J.D.; Funder, J.W.; Apriletti, J.W.; Webb, P. Towards Selectively Modulating Mineralocorticoid Receptor Function: Lessons from Other Systems. *Mol. Cell. Endocrinol.* **2004**, *217*, 151–165. [[CrossRef](#)]
6. James, E.R. The Etiology of Steroid Cataract. *J. Ocul. Pharmacol. Ther.* **2007**, *23*, 403–420. [[CrossRef](#)]
7. Fini, M.E.; Schwartz, S.G.; Gao, X.; Jeong, S.; Patel, N.; Itakura, T.; Price, M.O.; Price, F.W.; Varma, R.; Stamer, W.D. Steroid-Induced Ocular Hypertension/Glaucoma: Focus on Pharmacogenomics and Implications for Precision Medicine. *Prog. Retin. Eye Res.* **2017**, *56*, 58–83. [[CrossRef](#)]
8. Roberti, G.; Oddone, F.; Agnifili, L.; Katsanos, A.; Michelessi, M.; Mastropasqua, L.; Quaranta, L.; Riva, I.; Tanga, L.; Manni, G. Steroid-Induced Glaucoma: Epidemiology, Pathophysiology, and Clinical Management. *Surv. Ophthalmol.* **2020**, *65*, 458–472. [[CrossRef](#)]
9. Gordon, D.M.; McLEAN, J.M.; Koteen, H.; Bousquet, F.P.; McCUSKER, W.D.; Baras, I.; Wetzig, P.; Norton, E.W.D. The Use of ACTH and Cortisone in Ophthalmology. *Am. J. Ophthalmol.* **1951**, *34*, 1675–1686. [[CrossRef](#)]
10. Semeraro, F.; Morescalchi, F.; Russo, A.; Gambicorti, E.; Pilotto, A.; Parmeggiani, F.; Bartollino, S.; Costagliola, C. Central Serous Chorioretinopathy: Pathogenesis and Management. *Clin. Ophthalmol.* **2019**, *13*, 2341–2352. [[CrossRef](#)]
11. Daruich, A.; Matet, A.; Dirani, A.; Bousquet, E.; Zhao, M.; Farman, N.; Jaisser, F.; Behar-Cohen, F. Central Serous Chorioretinopathy: Recent Findings and New Physiopathology Hypothesis. *Prog. Retin. Eye Res.* **2015**, *48*, 82–118. [[CrossRef](#)] [[PubMed](#)]
12. Nicholson, B.P.; Atchison, E.; Idris, A.A.; Bakri, S.J. Central Serous Chorioretinopathy and Glucocorticoids: An Update on Evidence for Association. *Surv. Ophthalmol.* **2018**, *63*, 1–8. [[CrossRef](#)] [[PubMed](#)]
13. Ge, G.; Zhang, Y.; Zhang, Y.; Xu, Z.; Zhang, M. Corticosteroids Usage and Central Serous Chorioretinopathy: A Meta-Analysis. *Graefes Arch. Clin. Exp. Ophthalmol.* **2020**, *258*, 71–77. [[CrossRef](#)] [[PubMed](#)]
14. Bouzas, E.A.; Karadimas, P.; Pournaras, C.J. Central Serous Chorioretinopathy and Glucocorticoids. *Surv. Ophthalmol.* **2002**, *47*, 431–448. [[CrossRef](#)]
15. Karadimas, P.; Bouzas, E.A. Glucocorticoid Use Represents a Risk Factor for Central Serous Chorioretinopathy: A Prospective, Case-Control Study. *Graefes Arch. Clin. Exp. Ophthalmol.* **2004**, *242*, 800–802. [[CrossRef](#)]
16. Cusani, M. Central Serous Chorioretinopathy and Glucocorticoids. *Surv. Ophthalmol.* **2004**, *49*, 128–129, author reply 129. [[CrossRef](#)]
17. Chaîne, G.; Haouat, M.; Menard-Molcard, C.; Favard, C.; Vignal-Clermont, C.; Campinchi-Tardy, F.; Massin, P.; Gaudric, A.; Badelon, I.; Nicolon, L.; et al. Central serous chorioretinopathy and systemic steroid therapy. *J. Fr. Ophthalmol.* **2001**, *24*, 139–146.
18. Geoffroy, M.; Afriat, M.; Fauconier, M.; Eschard, J.P.; Salmon, J.H. Adverse Effect of Corticosteroid Therapy: Central Serous Chorioretinopathy. *Jt. Bone Spine* **2018**, *85*, 127–128. [[CrossRef](#)]
19. Rim, T.H.; Kim, H.S.; Kwak, J.; Lee, J.S.; Kim, D.W.; Kim, S.S. Association of Corticosteroid Use With Incidence of Central Serous Chorioretinopathy in South Korea. *JAMA Ophthalmol.* **2018**, *136*, 1164–1169. [[CrossRef](#)]
20. Chan, L.Y.; Adam, R.S.; Adam, D.N. Localized Topical Steroid Use and Central Serous Retinopathy. *J. Dermatolog. Treat.* **2016**, *27*, 425–426. [[CrossRef](#)]

21. Tsai, D.-C.; Chen, S.-J.; Huang, C.-C.; Chou, P.; Chung, C.-M.; Chan, W.-L.; Huang, P.-H.; Lin, S.-J.; Chen, J.-W.; Chen, T.-J.; et al. Risk of Central Serous Chorioretinopathy in Adults Prescribed Oral Corticosteroids: A Population-Based Study in Taiwan. *Retina* **2014**, *34*, 1867–1874. [[CrossRef](#)] [[PubMed](#)]
22. Kiernan, D.F.; Mieler, W.F. The Use of Intraocular Corticosteroids. *Expert. Opin. Pharmacother.* **2009**, *10*, 2511–2525. [[CrossRef](#)] [[PubMed](#)]
23. Cáceres-del-Carpio, J.; Costa, R.D.; Haider, A.; Narayanan, R.; Kuppermann, B.D. Corticosteroids: Triamcinolone, Dexamethasone and Fluocinolone. *Dev. Ophthalmol.* **2016**, *55*, 221–231. [[CrossRef](#)] [[PubMed](#)]
24. Knisely, T.L.; Hosoi, J.; Nazareno, R.; Granstein, R.D. The Presence of Biologically Significant Concentrations of Glucocorticoids but Little or No Cortisol Binding Globulin within Aqueous Humor: Relevance to Immune Privilege in the Anterior Chamber of the Eye. *Investig. Ophthalmol. Vis. Sci.* **1994**, *35*, 3711–3723.
25. Benediktsson, R.; Edwards, C.R. 11 Beta-Hydroxysteroid Dehydrogenases: Tissue-Specific Dictators of Glucocorticoid Action. *Essays Biochem.* **1996**, *31*, 23–36.
26. Chapman, K.; Holmes, M.; Seckl, J. 11 β -Hydroxysteroid Dehydrogenases: Intracellular Gate-Keepers of Tissue Glucocorticoid Action. *Physiol. Rev.* **2013**, *93*, 1139–1206. [[CrossRef](#)]
27. Chen, Y.; Yu, Y.; Qiao, J.; Zhu, L.; Xiao, Z. Mineralocorticoid Receptor Excessive Activation Involved in Glucocorticoid-Related Brain Injury. *Biomed. Pharmacother.* **2020**, *122*, 109695. [[CrossRef](#)]
28. Nguyen, V.T.; Farman, N.; Palacios-Ramirez, R.; Sbeih, M.; Behar-Cohen, F.; Aractingi, S.; Jaisser, F. Cutaneous Wound Healing in Diabetic Mice Is Improved by Topical Mineralocorticoid Receptor Blockade. *J. Investig. Dermatol.* **2020**, *140*, 223–234.e7. [[CrossRef](#)]
29. Funder, J.W. Mineralocorticoid Receptors: Distribution and Activation. *Heart Fail. Rev.* **2005**, *10*, 15–22. [[CrossRef](#)]
30. Walker, B.R. Glucocorticoids and Cardiovascular Disease. *Eur. J. Endocrinol.* **2007**, *157*, 545–559. [[CrossRef](#)]
31. Claude, A.K.; Miller, W.W.; Beyer, A.M.; Willeford, K.O.; Ross, M.K. Quantification and Comparison of Baseline Cortisol Levels between Aqueous and Plasma from Healthy Anesthetized Hound Dogs Utilizing Mass Spectrometry. *Vet. Ophthalmol.* **2014**, *17*, 57–62. [[CrossRef](#)] [[PubMed](#)]
32. Bousquet, E.; Zhao, M.; Ly, A.; Leroux Les Jardins, G.; Goldenberg, B.; Naud, M.-C.; Jonet, L.; Besson-Lescure, B.; Jaisser, F.; Farman, N.; et al. The Aldosterone-Mineralocorticoid Receptor Pathway Exerts Anti-Inflammatory Effects in Endotoxin-Induced Uveitis. *PLoS ONE* **2012**, *7*, e49036. [[CrossRef](#)] [[PubMed](#)]
33. Zhao, M.; Valamanesh, F.; Celerier, I.; Savoldelli, M.; Jonet, L.; Jeanny, J.-C.; Jaisser, F.; Farman, N.; Behar-Cohen, F. The Neuroretina Is a Novel Mineralocorticoid Target: Aldosterone up-Regulates Ion and Water Channels in Müller Glial Cells. *FASEB J.* **2010**, *24*, 3405–3415. [[CrossRef](#)] [[PubMed](#)]
34. Leśniewska, B.; Nowak, K.W.; Malendowicz, L.K. Dexamethasone-Induced Adrenal Cortex Atrophy and Recovery of the Gland from Partial, Steroid-Induced Atrophy. *Exp. Clin. Endocrinol.* **1992**, *100*, 133–139. [[CrossRef](#)] [[PubMed](#)]
35. Hagley, R.D.; Watlington, C.O. Dexamethasone Downregulates Mineralocorticoid Receptors in A6 Amphibian Kidney Cells in Tissue Culture. *Ann. N. Y. Acad. Sci.* **1995**, *761*, 405–407. [[CrossRef](#)] [[PubMed](#)]
36. Zhao, M.; Gelize, E.; Levy, R.; Moulin, A.; Azan, F.; Berdugo, M.; Naud, M.-C.; Guegan, J.; Delaunay, K.; Pussard, E.; et al. Mineralocorticoid Receptor Pathway and Its Antagonism in a Model of Diabetic Retinopathy. *Diabetes* **2021**, db210099. [[CrossRef](#)]
37. Sarapultsev, A.; Sarapultsev, P.; Dremencov, E.; Komelkova, M.; Tseilikman, O.; Tseilikman, V. Low Glucocorticoids in Stress-Related Disorders: The Role of Inflammation. *Stress* **2020**, *23*, 651–661. [[CrossRef](#)]
38. Zhao, M.; Célérier, I.; Bousquet, E.; Jeanny, J.-C.; Jonet, L.; Savoldelli, M.; Offret, O.; Curan, A.; Farman, N.; Jaisser, F.; et al. Mineralocorticoid Receptor Is Involved in Rat and Human Ocular Chorioretinopathy. *J. Clin. Investig.* **2012**, *122*, 2672–2679. [[CrossRef](#)]
39. Sugioka, K.; Kodama, A.; Okada, K.; Iwata, M.; Yoshida, K.; Kusaka, S.; Matsumoto, C.; Kaji, H.; Shimomura, Y. TGF- β 2 Promotes RPE Cell Invasion into a Collagen Gel by Mediating Urokinase-Type Plasminogen Activator (UPA) Expression. *Exp. Eye Res.* **2013**, *115*, 13–21. [[CrossRef](#)]
40. Bousquet, E.; Zhao, M.; Daruich, A.; Behar-Cohen, F. Mineralocorticoid Antagonists in the Treatment of Central Serous Chorioretinopathy: Review of the Pre-Clinical and Clinical Evidence. *Exp. Eye Res.* **2019**, *187*, 107754. [[CrossRef](#)]
41. Chen, Y.-Y.; Huang, L.-Y.; Liao, W.-L.; Chou, P. Association between Central Serous Chorioretinopathy and Risk of Depression: A Population-Based Cohort Study. *J. Ophthalmol.* **2019**, *2019*, 2749296. [[CrossRef](#)] [[PubMed](#)]
42. Shimojo, M.; Hiroi, N.; Yakushiji, F.; Ueshiba, H.; Yamaguchi, N.; Miyachi, Y. Differences in Down-Regulation of Glucocorticoid Receptor mRNA by Cortisol, Prednisolone and Dexamethasone in HeLa Cells. *Endocr. J.* **1995**, *42*, 629–636. [[CrossRef](#)] [[PubMed](#)]
43. Cidlowski, J.A.; Cidlowski, N.B. Regulation of Glucocorticoid Receptors by Glucocorticoids in Cultured HeLa S3 Cells. *Endocrinology* **1981**, *109*, 1975–1982. [[CrossRef](#)] [[PubMed](#)]
44. Xu, R.B.; Tan, J.X. Regulation of Glucocorticoid Receptor by Glucocorticoids (II)—The Studies on Rat Liver, Brain and Spleen. *Sci. China B* **1990**, *33*, 288–293. [[PubMed](#)]
45. Galvagni, F.; Orlandini, M.; Oliviero, S. Role of the AP-1 Transcription Factor FOSL1 in Endothelial Cells Adhesion and Migration. *Cell. Adh. Migr.* **2013**, *7*, 408–411. [[CrossRef](#)] [[PubMed](#)]
46. Elner, S.G. Human Retinal Pigment Epithelial Lysis of Extracellular Matrix: Functional Urokinase Plasminogen Activator Receptor, Collagenase, and Elastase. *Trans. Am. Ophthalmol. Soc.* **2002**, *100*, 273–299. [[PubMed](#)]

47. Das, A.; Boyd, N.; Jones, T.R.; Talarico, N.; McGuire, P.G. Inhibition of Choroidal Neovascularization by a Peptide Inhibitor of the Urokinase Plasminogen Activator and Receptor System in a Mouse Model. *Arch. Ophthalmol.* **2004**, *122*, 1844–1849. [[CrossRef](#)]
48. Matet, A.; Jaworski, T.; Bousquet, E.; Canonica, J.; Gobeaux, C.; Daruich, A.; Zhao, M.; Zola, M.; Meester-Smoor, M.; Mohabati, D.; et al. Lipocalin 2 as a Potential Systemic Biomarker for Central Serous Chorioretinopathy. *Sci. Rep.* **2020**, *10*, 20175. [[CrossRef](#)]
49. Chida, Y.; Hamer, M. Chronic Psychosocial Factors and Acute Physiological Responses to Laboratory-Induced Stress in Healthy Populations: A Quantitative Review of 30 Years of Investigations. *Psychol. Bull.* **2008**, *134*, 829–885. [[CrossRef](#)]
50. D'Agostino, J.; Vaeth, G.F.; Henning, S.J. Diurnal Rhythm of Total and Free Concentrations of Serum Corticosterone in the Rat. *Acta Endocrinol.* **1982**, *100*, 85–90. [[CrossRef](#)]
51. Yamazaki, S.; Akira, S.; Sumimoto, H. Glucocorticoid Augments Lipopolysaccharide-Induced Activation of the I κ B ζ -Dependent Genes Encoding the Anti-Microbial Glycoproteins Lipocalin 2 and Pentraxin 3. *J. Biochem.* **2015**, *157*, 399–410. [[CrossRef](#)] [[PubMed](#)]
52. Cheung, C.M.G.; Lee, W.K.; Koizumi, H.; Dansingani, K.; Lai, T.Y.Y.; Freund, K.B. Pachychoroid Disease. *Eye* **2018**, *33*, 14–33. [[CrossRef](#)] [[PubMed](#)]
53. Borooah, S.; Sim, P.Y.; Phatak, S.; Moraes, G.; Wu, C.Y.; Cheung, C.M.G.; Pal, B.; Bujarborua, D. Pachychoroid Spectrum Disease. *Acta Ophthalmol.* **2020**, *99*, e806–e822. [[CrossRef](#)] [[PubMed](#)]
54. Borrelli, E.; Zuccaro, B.; Zucchiatti, I.; Parravano, M.; Querques, L.; Costanzo, E.; Sacconi, R.; Prascina, F.; Scarinci, F.; Bandello, F.; et al. Optical Coherence Tomography Parameters as Predictors of Treatment Response to Eplerenone in Central Serous Chorioretinopathy. *J. Clin. Med.* **2019**, *8*, 1271. [[CrossRef](#)] [[PubMed](#)]
55. Zucchiatti, I.; Sacconi, R.; Parravano, M.C.; Costanzo, E.; Querques, L.; Montorio, D.; Bandello, F.; Querques, G. Eplerenone Versus Observation in the Treatment of Acute Central Serous Chorioretinopathy: A Retrospective Controlled Study. *Ophthalmol. Ther.* **2018**, *7*, 109–118. [[CrossRef](#)]
56. Van Haalen, F.M.; van Dijk, E.H.C.; Savas, M.; Brinks, J.; Dekkers, O.M.; Dijkman, G.; van Rossum, E.F.C.; Biermasz, N.R.; Boon, C.J.F.; Pereira, A.M. Hair Cortisol Concentrations in Chronic Central Serous Chorioretinopathy. *Acta Ophthalmol.* **2020**, *98*, 390–395. [[CrossRef](#)]
57. Calogero, A.E.; Kamilaris, T.C.; Johnson, E.O.; Tartaglia, M.E.; Chrousos, G. Recovery of the Rat Hypothalamic-Pituitary-Adrenal Axis after Discontinuation of Prolonged Treatment with the Synthetic Glucocorticoid Agonist Dexamethasone. *Endocrinology* **1990**, *127*, 1574–1579. [[CrossRef](#)]
58. Marin, M.T.; Cruz, F.C.; Planeta, C.S. Chronic Restraint or Variable Stresses Differently Affect the Behavior, Corticosterone Secretion and Body Weight in Rats. *Physiol. Behav.* **2007**, *90*, 29–35. [[CrossRef](#)]
59. Matsuura, T.; Takimura, R.; Yamaguchi, M.; Ichinose, M. Estimation of Restraint Stress in Rats Using Salivary Amylase Activity. *J. Physiol. Sci.* **2012**, *62*, 421–427. [[CrossRef](#)]
60. Christensen, M.V.; Kessing, L.V. The Hypothalamo-Pituitary-Adrenal Axis in Major Affective Disorder: A Review. *Nord. J. Psychiatry* **2001**, *55*, 359–363. [[CrossRef](#)]
61. Adam, E.K.; Quinn, M.E.; Tavernier, R.; McQuillan, M.T.; Dahlke, K.A.; Gilbert, K.E. Diurnal Cortisol Slopes and Mental and Physical Health Outcomes: A Systematic Review and Meta-Analysis. *Psychoneuroendocrinology* **2017**, *83*, 25–41. [[CrossRef](#)] [[PubMed](#)]
62. Paragliola, R.M.; Papi, G.; Pontecorvi, A.; Corsello, S.M. Treatment with Synthetic Glucocorticoids and the Hypothalamus-Pituitary-Adrenal Axis. *Int. J. Mol. Sci.* **2017**, *18*, 2201. [[CrossRef](#)] [[PubMed](#)]
63. Kempainen, R.J.; Behrend, E.N. Dexamethasone Rapidly Induces a Novel Ras Superfamily Member-Related Gene in AtT-20 Cells. *J. Biol. Chem.* **1998**, *273*, 3129–3131. [[CrossRef](#)] [[PubMed](#)]
64. Zhao, M.; Bousquet, E.; Valamanesh, F.; Farman, N.; Jeanny, J.-C.; Jaisser, F.; Behar-Cohen, F.F. Differential Regulations of AQP4 and Kir4.1 by Triamcinolone Acetonide and Dexamethasone in the Healthy and Inflamed Retina. *Investig. Ophthalmol. Vis. Sci.* **2011**, *52*, 6340–6347. [[CrossRef](#)] [[PubMed](#)]
65. Canonica, J.; Zhao, M.; Favez, T.; Gelizé, E.; Jonet, L.; Kowalczyk, L.; Guegan, J.; Le Menuet, D.; Viengchareun, S.; Lombès, M.; et al. Pathogenic Effects of Mineralocorticoid Pathway Activation in Retinal Pigment Epithelium. *Int. J. Mol. Sci.* **2021**, *22*, 9618. [[CrossRef](#)]
66. Canonica, J.; Mehanna, C.; Bonnard, B.; Jonet, L.; Gelize, E.; Jais, J.-P.; Jaisser, F.; Zhao, M.; Behar-Cohen, F. Effect of Acute and Chronic Aldosterone Exposure on the Retinal Pigment Epithelium-Choroid Complex in Rodents. *Exp. Eye Res.* **2019**, *187*, 107747. [[CrossRef](#)]