



HAL
open science

Pedunculo pontine and Cuneiform Nuclei Deep Brain Stimulation for Severe Gait and Balance Disorders in Parkinson's Disease: Interim Results from a Randomized Double-Blind Clinical Trial

Julie Bourilhon, Claire Olivier, Hana You, Antoine Collomb-Clerc, David Grabli, Hayat Belaid, Yannick Mullie, Chantal François, Virginie Czernecki, Brian Lau, et al.

► To cite this version:

Julie Bourilhon, Claire Olivier, Hana You, Antoine Collomb-Clerc, David Grabli, et al.. Pedunculo pontine and Cuneiform Nuclei Deep Brain Stimulation for Severe Gait and Balance Disorders in Parkinson's Disease: Interim Results from a Randomized Double-Blind Clinical Trial. *Journal of Parkinson's disease*, 2022, 12 (2), pp.639-653. 10.3233/JPD-212793 . hal-03579807v2

HAL Id: hal-03579807

<https://hal.sorbonne-universite.fr/hal-03579807v2>

Submitted on 27 Nov 2023

HAL is a multi-disciplinary open access archive for the deposit and dissemination of scientific research documents, whether they are published or not. The documents may come from teaching and research institutions in France or abroad, or from public or private research centers.

L'archive ouverte pluridisciplinaire **HAL**, est destinée au dépôt et à la diffusion de documents scientifiques de niveau recherche, publiés ou non, émanant des établissements d'enseignement et de recherche français ou étrangers, des laboratoires publics ou privés.

Research Report

Pedunculo pontine and Cuneiform Nuclei Deep Brain Stimulation for Severe Gait and Balance Disorders in Parkinson's Disease: Interim Results from a Randomised Double-Blind Clinical Trial

Julie Bourilhon^{a,b}, Claire Olivier^{b,c}, Hana You^{b,d}, Antoine Collomb-Clerc^b, David Grabli^{b,e}, Hayat Belaid^f, Yannick Mullie^b, Chantal François^b, Virginie Czernecki^e, Brian Lau^b, Fernando Pérez-García^{b,g}, Eric Bardinnet^{b,g}, Sara Fernandez-Vidal^{b,h}, Carine Karachi^{b,f} and Marie-Laure Welter^{a,b,*}

^aDepartment of Neurophysiology, Rouen University Hospital and University of Rouen, France

^bSorbonne Universités, UPMC Univ Paris 06, CNRS, INSERM, Institut du Cerveau et de la Moelle Épinrière (ICM), Paris, France

^cPANAM platform, Institut du Cerveau et de la Moelle Épinrière (ICM), Paris, France

^dClinical Investigation Center, Pitié-Salpêtrière, Charles Foix University Hospital, Assistance Publique-Hôpitaux de Paris, Institut du Cerveau et de la Moelle Épinrière (ICM), Paris, France

^eFédération des Maladies du Système Nerveux, Pitié-Salpêtrière, Charles Foix University Hospital, Assistance Publique-Hôpitaux de Paris, Paris, France

^fDepartment of Neurosurgery, Pitié-Salpêtrière, Charles Foix University Hospital, Assistance Publique-Hôpitaux de Paris, Paris, France

^gCENIR Platform, Institut du Cerveau et de la Moelle Épinrière (ICM), Paris, France

^hSTIM Platform, Institut du Cerveau et de la Moelle Épinrière (ICM), Paris, France

Accepted 17 October 2021

Pre-press 5 November 2021

Abstract.

Background: Dopa-resistant freezing of gait (FOG) and falls represent the dominant motor disabilities in advanced Parkinson's disease (PD).

Objective: We investigate the effects of deep brain stimulation (DBS) of the mesencephalic locomotor region (MLR), comprised of the pedunculo pontine (PPN) and cuneiform (CuN) nuclei, for treating gait and balance disorders, in a randomized double-blind cross-over trial.

Methods: Six PD patients with dopa-resistant FOG and/or falls were operated for MLR-DBS. Patients received three DBS conditions, PPN, CuN, or sham, in a randomized order for 2-months each, followed by an open-label phase. The primary outcome was the change in anteroposterior anticipatory-postural-adjustments (APAs) during gait initiation on a force platform

*Correspondence to: Marie-Laure Welter, MD, PhD, Neurophysiology Department, Rouen University Hospital, 1 rue de

Germont, 76031 Rouen Cedex, France. Tel.: +33232888047; Fax: +33232883046; E-mail: marielaure.welter@icm-institute.org.

at the end of each DBS condition. Secondary outcomes included safety and differences in gait kinetics, and clinical gait, cognitive and quality of life scales.

Results: The anteroposterior APAs were not significantly different between the DBS conditions (median displacement [1st–3rd quartile] of 3.07 [3.12–4.62] cm with sham-DBS, 1.95 [2.29–3.85] cm with PPN-DBS and 2.78 [1.66–4.04] cm with CuN-DBS; $p = 0.25$). Step length and velocity were significantly higher with CuN-DBS vs. both sham-DBS and PPN-DBS. Conversely, step length and velocity were lower with PPN-DBS vs. sham-DBS, with greater double stance and gait initiation durations. One year after surgery, step length was significantly lower with PPN-DBS vs. inclusion. We did not find any significant change in clinical scales between DBS conditions or one year after surgery.

Conclusion: Two months of PPN-DBS or CuN-DBS does not effectively improve clinically dopa-resistant gait and balance disorders in PD patients.

Keywords: Mesencephalic locomotor region, Parkinson’s disease patients, freezing of gait, postural instability, deep brain stimulation

INTRODUCTION

Freezing of gait (FOG) and falls represent the dominant motor disabilities in advanced Parkinson’s disease (PD). These signs worsen over time, are associated with increased morbidity, mortality, poor quality of life and high public health cost [1–4], and become unresponsive to dopaminergic treatment or deep brain stimulation (DBS) of the subthalamic nucleus [4–6] or internal part of the globus pallidus [7, 8]. Their pathophysiology is poorly understood, but imaging and post-mortem studies suggest a causal role of cholinergic dysfunction within the pedunculopontine nucleus (PPN) [9–12], located in the mesencephalic locomotor region (MLR), also including the cuneiform nucleus (CuN) dorsally [13–15]. In mice, optogenetic stimulation of cholinergic and glutamatergic PPN neurons modulates and produces slow exploratory locomotion, respectively, whereas stimulation of glutamatergic CuN neurons produces high-speed running [16, 17]. In cats, PPN or CuN stimulation modifies axial tone or elicits locomotion, respectively [15]; and in monkeys, cholinergic PPN lesions provoke increased hindlimb and tail tone with impaired locomotion, whereas CuN lesions increased forelimb and neck tone and gait speed [15]. In humans, neuronal recordings and imaging studies suggest that imagined and simulated gait evoke MLR activation [11, 18–24], with the CuN more involved in initiated high speed gait and the PPN in the automaticity for paced walking [25].

Based on this and on the correlation between PPN cholinergic cell death and falls in PD [10], MLR-DBS has been attempted to alleviate FOG and falls for PD. About half of patients reported a subjective reduction of FOG and falls after MLR-DBS [26–29], but randomized controlled studies including a small

number of PD patients generally failed to demonstrate significant objective clinical effects [28–30]. Using gait recordings in a controlled study, we previously observed a small improvement of objective gait initiation parameters in 4 patients with DBS applied in the dorsal MLR, i.e., just above the pontomesencephalic junction (PMJ) [29], and in a postmortem series of 2 patients with progressive supranuclear palsy, a possible better result was also obtained with DBS applied in the dorsal MLR [31]. However, a reduction of FOG during turning was reported in 7 patients with DBS applied in the more ventral MLR, below the PMJ [32]. Finally, the heterogeneous clinical outcomes obtained in previous studies could be due to 1) the unknown optimal target within the MLR, namely the CuN or the PPN that may control different walking parameters; 2) the difficulty in assessing episodic phenomenon such as FOG and falls under experimental conditions, and 3) the unknown PD population that would be the best candidates [33].

Here, we aimed to evaluate the effects of DBS of both PPN and CuN in PD patients with dopa-resistant FOG and/or falls, in a crossover, double-blind randomized trial.

METHODS

Study design and patients

In this exploratory randomized, double-blind, crossover trial with a 6-month blinded phase, we recruited patients from the Pitié-Salpêtrière Hospital. All patients were assessed at the Clinical Investigation Center at the Paris Brain Institute and operated at the Neurosurgery department of the Pitié-Salpêtrière Hospital. Patients were eligible for inclusion if they fulfilled the criteria for idiopathic PD diagnosis based

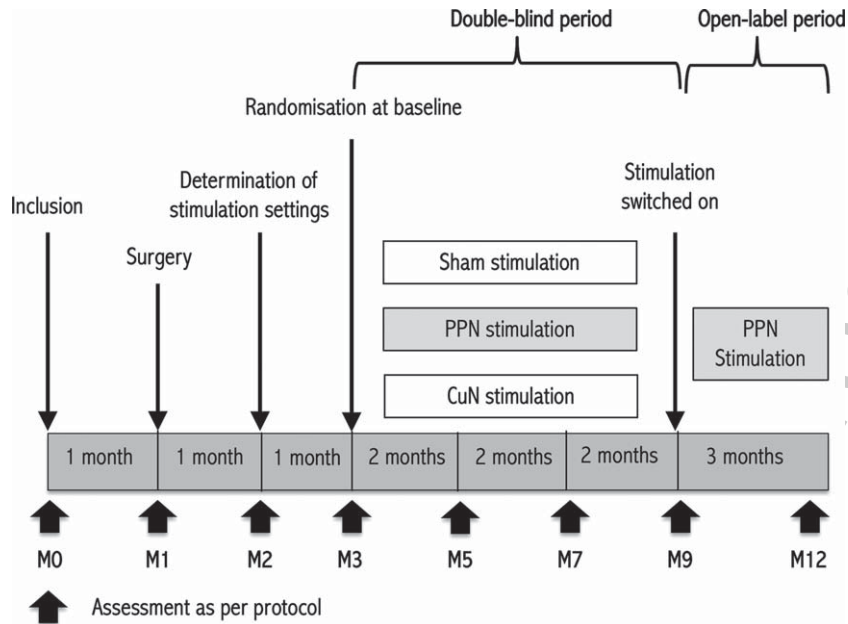


Fig. 1. Study design. The study included three 2-month treatment phases (month 3 to month 9). Patients were evaluated at inclusion, less than 2 months before surgery; 2 months after surgery, before sham or active stimulation; 4, 6 and 8 months after surgery, after 2 months with active PPN, active CuN or sham stimulation; and 11 months after surgery after 3 months with open-label active PPN stimulation. The optimal stimulation settings for the randomization period were determined 1 month after surgery.

105 on the United Kingdom Parkinson's Disease Society
 106 Brain Bank, were aged between 18 and 70 years old,
 107 had gait and/or balance disorders not improved by
 108 dopamine treatment (Movement Disorder Society-
 109 Unified Parkinson's Disease Rating Scale [MDS-
 110 UPDRS] [34]; activities of daily living-ADL: part 2:
 111 item 2.12-walking / balance > 1 and / or item 2.13-
 112 freezing of gait > 1 and / or clinical evaluation item
 113 3.11-freezing of gait > 1 and / or item 3.12-postural
 114 instability > 1, On-dopa), had a dopa sensitivity for
 115 other motor signs >40%, had no contraindication to
 116 the examination necessary for inclusion, magnetic
 117 resonance imaging or for DBS surgical procedure,
 118 had no dementia (Mattis Dementia Rating Scale more
 119 than 129), were stable on antiparkinsonian drug treat-
 120 ment for at least 3 months at the time of recruitment,
 121 agreed to participate and provide written informed
 122 consent and affiliation to a social security scheme. For
 123 each patient, these evaluations were reviewed by an
 124 independent selection committee of 2 expert neurologist
 125 and neurosurgeon, who made the final decisions
 126 with respect to eligibility.

127 We performed the study in accordance with the
 128 declaration of Helsinki and Good clinical practice
 129 guidelines and approval by the ethics committee
 130 (CPPRB Ile-de-France Paris 6, Clinical trials.gov reg-
 131 istration NCT02931097).

131 Randomization and blinding

132 Patients received three DBS conditions, PPN,
 133 CuN, or sham, in a randomized order for a 2-month
 134 period each (Fig. 1). The randomization sequence
 135 was allocated using a block scheme including the 6
 136 order options per block. The randomization sequence
 137 was only revealed to the unblinded clinician respon-
 138 sible for the stimulation programming. Patients were
 139 blinded to the randomization sequence. To avoid
 140 the possibility of a patient being aware of their
 141 randomization group, the unblinded neurologist set
 142 stimulation parameters below the side-effect thresh-
 143 old and spent the same time adjusting each patient's
 144 stimulator at the start of both active and sham stimu-
 145 lation periods. The DBS parameters were not modified
 146 during each double-blind period. The primary and
 147 secondary outcomes were assessed by the same
 148 blinded investigators throughout the study.

149 Procedures

150 Patients were assessed at inclusion (baseline), fol-
 151 lowed 1 month later by bilateral implantation of DBS
 152 electrodes into the MLR (Fig. 2). For each patient, we
 153 determined the targets after superimposing our 3D
 154 histological atlas providing a map of PPN cholinergic

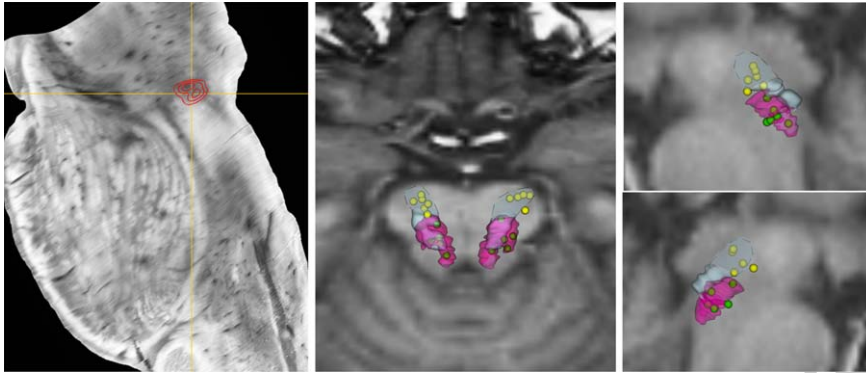


Fig. 2. Reconstruction of the PPN and CuN nuclei DBS electrodes location. Left panel: Location of the highest density of cholinergic neurons within the mesencephalic locomotor region corresponding to the pedunculopontine nucleus (PPN, red area). Middle and right panels: Location of contacts used for DBS and reported on 3-D views after fusion with the three-dimensional MRI image (middle panel: posterior view; right panel: right and left sagittal views). The pink and light-blue outline the cholinergic PPN and GABAergic CuN neurons, respectively, with the dashed line delimiting the dorsal part of the CuN. The active contacts used for PPN-DBS during the double-blind period are represented in green and those for CuN DBS in yellow, showing that the electrodes all penetrate the PPN and CuN areas.

neurons and GABAergic neurons of the PPN and CuN [35], adjusted to fit the specific geometry of each patient's brain MRI (Fig. 2). The trajectory was chosen in order to have an electrode which passes through these 2 MLR areas, with at least one contact located within the PPN and another more dorsally within the CuN. Implantation of the two electrodes with 8 in-line contacts (model DB-2201, contact spacing: 2 mm, diameter: 1.3 mm, Boston Scientific). Surgery was performed under general anesthesia in 3 patients and under sedation in 3 patients, with two microelectrodes recordings on each side, with one along the central trajectory and one along the anterior, posterior, or medial trajectories depending on the individual patient's anatomy. According to per-operative physiological and anatomical checks using X-ray, the central trajectory was chosen for implanting the definitive DBS electrode in 9 cases, the anterior trajectory in 2 cases and the posterior trajectory in one case. A post-operative CT-scan was performed to check the absence of complications and determine electrode locations (Fig. 2A). The pulse generator was implanted 1–4 days after (Vercise; Boston Scientific).

We performed an assessment 1 month after surgery (month 2, Fig. 1). The stimulators were activated, and parameter settings determined for the double-blind period. We randomly assigned patients 1 month later (month 3) to the 3 DBS conditions. At the end of the 6 month double-blind period, as previous studies have demonstrated a link between cholinergic cell death and gait and balance disorders of PD patients [9–12], all patients received PPN-DBS for the subsequent 3

months in an open-label fashion in order to assess more specifically the effects of PPN-DBS over a longer period and with the possibility to adapt parameters settings (month 9 to month 12).

We recommended that patients' medical treatments for PD remain stable over the study period. We carefully recorded treatment adjustments necessitated by patients' neurological conditions.

Outcomes

The primary outcome was the difference in the posterior center of foot pressure (CoP) displacement during the anticipatory postural adjustments (APAs) phase Off-dopa between the end of each 2-month period of the randomized double-blind period, i.e., with Sham- vs. PPN- vs. CuN-DBS. We chose this parameter as 1) it has been widely reported to be decreased in PD patients, and more specifically in PD patients with FOG [36], 2) was recorded using validated procedures and calculated independently, and 3) we have already shown it to be modified with MLR-DBS [29].

For this, gait parameters were recorded at each visit using the VICON system with Plug-In-Gait model with markers positioned on the arm and leg joints. The patients, barefoot, initiated gait on a force platform (0.9×1.8 m, Advanced Mechanical Technology Inc. LG6-4-1) and walked for 5-m at a self-paced speed, making a half-turn and returning to the initial position ($n = 15$ – 20 trials, Fig. 3). The gait initiation, straight forward walking and turn events were manually identified and the following parameters calculated:

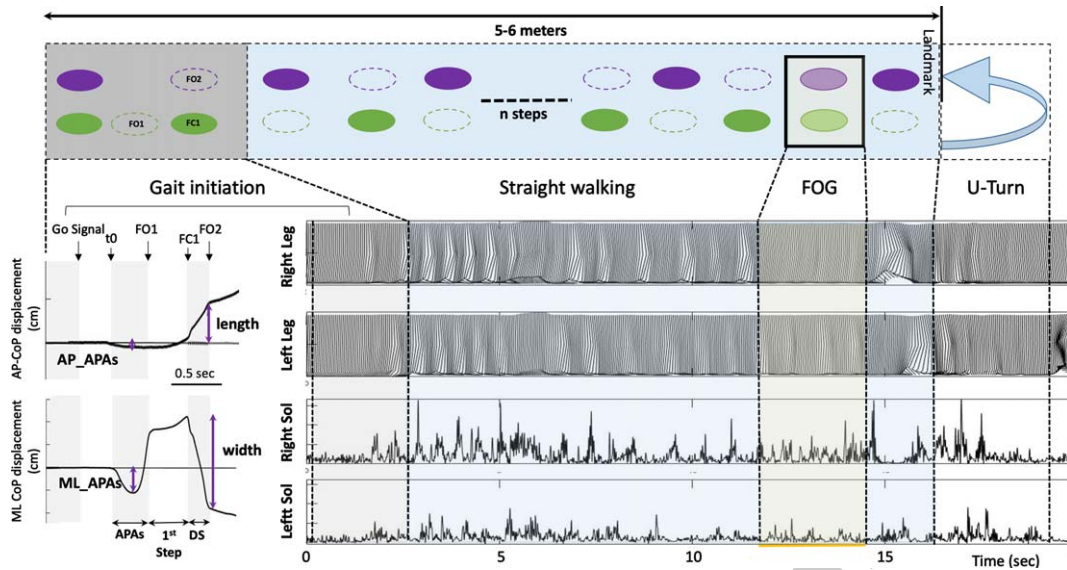


Fig. 3. Recordings of gait initiation, straight-line walking and turn using the force platform and VICON system. Top row: The subject stands motionless on the force plate (Grey square) and initiates gait with his right leg (Gait initiation), and then walks straight forward self-paced, makes a half-turn to a landmark taped to the ground and comes back to the starting position. The standardized gait alternation is represented with green and purple filled ellipses when the foot is in floor contact and a dotted outline ellipse during the swing phase of the foot. A freezing of gait episode is represented by the two feet on the ground. Bottom row: Illustration of the AP and ML CoP displacements during the gait initiation phase (left). Events of the gait initiation task are represented with black arrows and grey and white columns. At bottom right, illustration of both pelvis, knee, and ankle kinematics (upper rows) and soleus EMG signal (lower rows) for right and left legs, during gait initiation, straight-line forward walking, and U-turn. A FOG episode is characterized by an absence of forward movement, with attempts to lift the left foot from the ground, and bilateral simultaneous soleus muscle activity. AP, Anteroposterior; APAs, Anticipatory Postural Adjustments; CoP, Centre of foot Pressure; DS, double-stance phase; FC1, Foot Contact of the starting leg; FO1, Foot Off of the starting leg; FOG, Freezing of Gait; ML, Mediolateral; Sol, Soleus; t0, time of the first biomechanical event corresponding to the beginning of the APAs.

219 1) APAs phase duration, 2) maximum posterior and 3)
 220 lateral CoP displacements during the APAs, 4) length
 221 and velocity of the first step, 5) step width, 6) mean
 222 step length during a gait cycle, 7) cadence, 8) step
 223 length asymmetry, 9) stride time variability, 10) gait
 224 cycle, double-stance and half-turn durations, 11) turn
 225 amplitude and 11) the number of FOG episodes during
 226 the forward path (Fig. 3). These parameters were
 227 recorded Off-dopa (after an interruption of 12 hours
 228 of the antiparkinsonian treatment) and On-dopa (after
 229 receiving a suprathreshold dose of levodopa). For gait
 230 parameters, an improvement is reflected by a decrease
 231 in temporal parameters (duration of APAs, double-
 232 stance and turn) and an increase in spatial parameters
 233 (posterior and lateral CoP displacement, step length,
 234 velocity, turn amplitude).

235 Prespecified secondary outcomes were differences in the other gait initiation and spatiotemporal parameters, and clinical scales between the end of each 2-month period of the randomized double-blind period (with sham vs. CuN vs. PPN DBS). Clinical assessments included the following scales: the

241 MDS-UPDRS (part 1: mental status, part 2: ADL,
 242 part 4: levodopa-related motor complications, and
 243 part 3: motor disability score assessed both Off- and
 244 On-dopa, comprising the “axial” subscore) [34]; the
 245 gait and balance scale (GABS) [37], also assessed
 246 both Off and On-dopa; the Rating Scale for Gait
 247 Evaluation (RGSE) [38]; the Tinetti scale [39]; the
 248 freezing of gait questionnaire (FOG-Q) [40]; the
 249 Activities-Balance Confidence (ABC) scale [41];
 250 the Parkinson’s Disease Questionnaire (PDQ-39);
 251 the Mattis Dementia Rating Scale (MDRS)
 252 [42]; the Comprehensive Psychopathological Rating
 253 Scale [43], which includes the Montgomery and
 254 Asberg Depression rating Scale (MADRS) [44] and
 255 Brief Anxiety Scale (BAS) [45].

256 We also assessed the differences in gait initiation
 257 and clinical parameters between inclusion and the
 258 end of each 2-month double-blind period (inclusion
 259 vs. month 5-7 or 9); between inclusion and the end
 260 of the open-label period (inclusion vs. month 12);
 261 and between inclusion and post-surgery (inclusion
 262 vs. month 3) to assess the effects of the surgery itself.

We assessed safety in all patients who were enrolled and received MLR-DBS surgery. We classified any new symptoms as adverse events. We classified an adverse event as serious if the patient required hospital admission, if sequelae were present, or if the clinician considered the event to be serious.

Statistical analysis

This is a phase II study, and all outcomes are exploratory. We performed statistical analyses including all randomly allocated patients who received sham or active DBS during the double-blind period. All quantitative data are described with mean and SDs.

To assess a difference in the primary outcome, we used the non-parametric Friedman rank sum test with stimulation target (Condition, i.e., sham-, PPN- or CuN-DBS) as the treatment or grouping variable and patient as the blocking factor. We examined the differences in other gait parameters and clinical scores by modelling each outcome using a linear mixed-model. We included treatment condition (baseline, month 3, Sham-, CuN-, or PPN-DBS, and month 12) and a period effect as fixed effects, and patient intercepts as random effects. We used the R package (version 3.3.1, R Core Development Team) for the statistical analysis, with the *LmerTest* package for the linear mixed-effect model testing. We used a significance threshold of 0.05. *Post-hoc* comparisons were FDR-corrected.

RESULTS

Cohort analysis

Between October 2016 and June 2018, we assessed 9 patients for eligibility, enrolling 8 in the study (Fig. 4). Two patients were withdrawn before surgery because of non-inclusion criteria: one with dementia (MMSE = 18) and one showed dopaminergic responsive axial motor signs (improvement of 72%). Thus, 6 patients were operated, randomly allocated and completed the study (Table 1). Medication was held constant during the double-blind period except in one patient (P03). Patients inclusion was stopped after completion of the randomized double-blind period by the sixth patient following a decision by the independent supervisory committee. This decision was based on the absence of an objective or subjective individual improvement in clinical scores in the 6 operated patients.

Electrode locations and stimulation parameters

Electrodes were accurately implanted in the PPN and the CuN on both sides except for one side in P04 (Fig. 2, Table 1). We used bipolar DBS using adjacent contacts as anode and cathode, for both CuN and PPN targets with 30 Hz stimulation frequency, 60 μ s pulse width and 1.7 to 4.2mA amplitude.

Changes in gait parameters and clinical scales during the double-blind randomized period

Gait parameters

Changes in the anteroposterior CoP displacement during the APAs were not significantly different between the end of each 2-month DBS condition during the double-blind period Off- and On-dopa (median displacement [1st–3rd quartile] of 3.07 [3.12–4.62] cm with sham-DBS, 1.95 [2.29–3.85] cm with PPN-DBS and 2.78 [1.66–4.04] cm with CuN-DBS; Friedman test, $p = 0.25$, Fig. 5). In secondary analyses, using linear mixed models including the dopa treatment conditions, we found that the APAs anteroposterior CoP displacement was lower with PPN- relative to both Sham- and CuN-DBS in the On-dopa condition, and lower with Sham-, CuN-, and PPN-DBS relative to before surgery (On-dopa, Fig. 5).

During the randomized period, Off-dopa, we found that the first step length was higher with PPN-DBS relative to Sham-DBS (Fig. 6); and that the number of FOG episodes was lower with CuN- relative to PPN-DBS (Supplementary Figure 2). In the On-dopa condition, we found that the APAs, double-stance and turn durations were lower with Sham- relative to both PPN- and CuN-DBS (Fig. 6, Supplementary Table 1, Supplementary Figure 2), and the mediolateral CoP displacement during the APAs, step width, cadence, and turn amplitude were higher (Fig. 6, Supplementary Table 1, Supplementary Figure 2). On-dopa, the first step length, velocity, and mediolateral CoP displacements were also significantly higher (Fig. 6, Supplementary Table 1) and the gait cycle duration lower (Supplementary Figure 2) with CuN- relative to PPN-DBS. The first step length (On-dopa) was also significantly higher with CuN- relative to Sham-DBS (Fig. 6) and the number of FOG lower with Sham- relative to PPN-DBS (Supplementary Figure 2). Lastly, we also found a significant interaction between DBS conditions and the effects of the dopaminergic treatment on gait parameters during the randomized period ($p < 0.001$, Supplementary Material, Results).

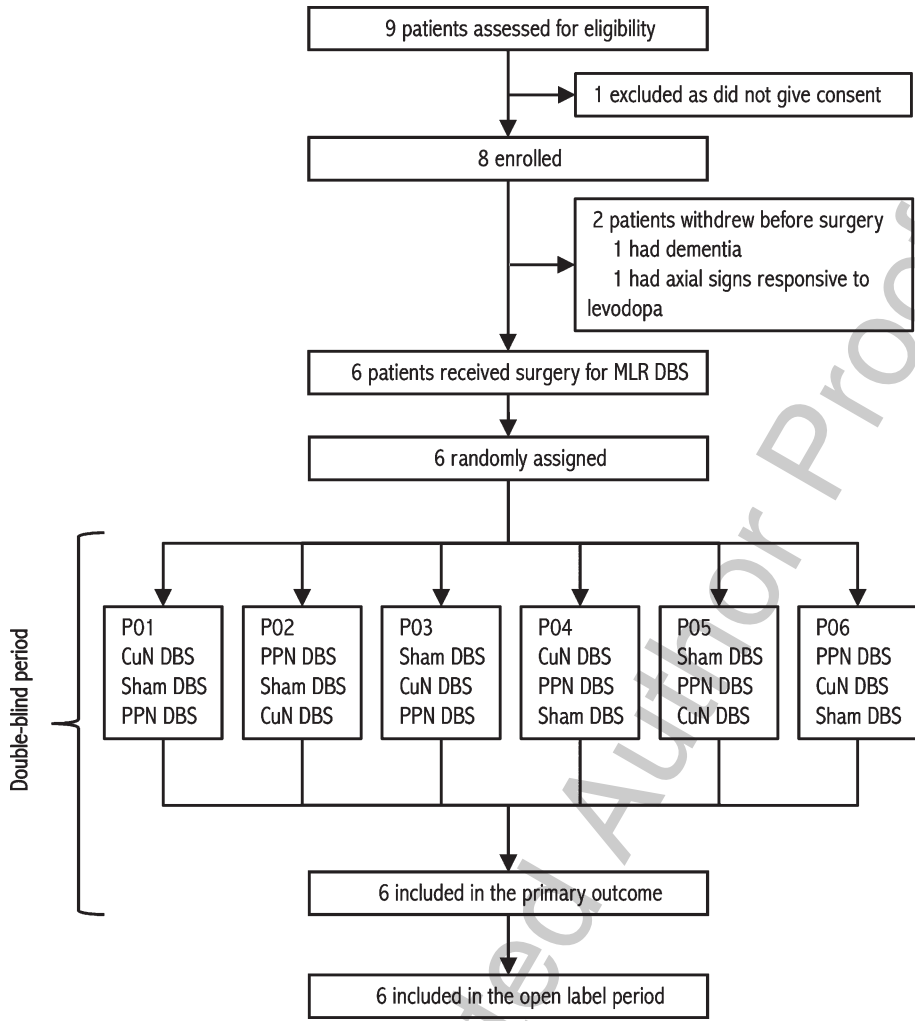


Fig. 4. Trial profile. DBS, deep brain stimulation; CuN, cuneiform nucleus; MLR DBS, mesencephalic locomotor region deep brain stimulation; PPN, pedunculo-pontine nucleus.

359 Comparing DBS conditions to before surgery,
 360 Off-dopa, we found that the APAs mediolateral
 361 CoP displacement, first step length and width were
 362 decreased with both Sham and PPN-DBS, and the
 363 velocity also decreased with PPN-DBS relative to
 364 before surgery (Fig. 6). On-dopa, we found that the
 365 APAs and double-stance durations were significantly
 366 higher and the APAs mediolateral CoP displacement
 367 and first step width lower with both CuN- and PPN-
 368 DBS relative to before surgery (Fig. 6). On-dopa,
 369 the APAs mediolateral CoP displacement, first step
 370 length and velocity were also significantly lower with
 371 PPN-DBS relative to before surgery; and the first step
 372 length significantly lower with Sham-DBS relative to
 373 before surgery (Fig. 6). Lastly, the first step length and
 374 velocity (On-dopa) were also significantly decreased

one year after surgery with open-label PPN-DBS re-
 lative to before (Fig. 6).

Lastly, looking for differences in the clinical scores
 and gait parameters with exclusion of the patient with
 unilateral MLR-DBS (P05), we found no differences
 in the results obtained, except a lower step length with
 Sham- relative to CuN-DBS (On dopa, not shown).

Clinical scales

We found no significant differences in the MDS-
 UPDRS, “axial” subscore, GABS, RSGE, ABC,
 FOG-Q, PDQ-39, MDRS, MADRS, and BAS scores
 at the end of each DBS condition (Off and On-
 dopa conditions, Table 2), and relative to pre-surgery
 scores (Table 2). During the randomized period, 3/6
 patients had lower scores for FOG-Q with CuN-DBS

375
 376
 377
 378
 379
 380
 381
 382
 383
 384
 385
 386
 387
 388
 389

Table 1

Baseline demographic and clinical characteristics of 6 PD patients and stimulation parameters setting used during the blinded period

Patient	Age, y/ Sex	Disease duration, y	MDS-UPDRS 3 Off/On	Axial score* Off/On	GABS Off/On	FOG-Q	MDRS	ABC- Scale	LED (mg/d)	DBS coordinates: X/Y/Z (mm)
01	65/M	6	29/17	7/6	10/12	29	144	78.1	650	CuN-R: 10/8/3 CuN-L: 7/8/3 PPN-R: 7/5/-2 PPN-L: 6/4/-2
02	68/M	12	37/19	9/7	29/24	36	142	52.5	2,200	CuN-R: 11/12/3 CuN-L: 10/10/3 PPN-R: 8/8/-1 PPN-L: 7/7/-1
03	67/F	10	51/28	16/11	40/25	36	141	46.3	860	CuN-R: 8/8/5 CuN-L: 8/9/4 PPN-R: 6/8/-2 PPN-L: 6/8/-1
04	68/M	17	43/28	15/12	39/30	40	139	42.5	1,650	CuN-R: NA CuN-L: 8/10/2 PPN-R: NA PPN-L: 6/7/-2
05	67/M	12	75/40	19/12	51/19	44	139	43.1	2,175	CuN-R: 9/8/5 CuN-L: 8/9/5 PPN-R: 6/5/-1 PPN-L: 5/6/-1
06	54/M	12	27/12	6/3	11/4	33	139	79.4	1,200	CuN-R: 7/10/4 CuN-L: 7/9/4 PPN-R: 6/8/0 PPN-L: 6/7/0
Mean (SD)	64.8 (5.4)	11.5 (3.6)	43.7 (17.7)/ 24.0 (10.1)	12.0 (5.3)/ 8.5 (3.7)	30.0 (16.6)/ 19.0 (9.6)	36.3 (5.2)	140.7 (2.1)	57.0 (17.2)	1,456 (660)	

*The axial score is the sum of the following items: “arising from chair”, “gait”, “freezing of gait”, “postural stability”, and “posture” DBS, deep brain stimulation; FOG-Q, freezing of gait questionnaire; GABS, gait and balance scale; LED, levodopa-equivalent daily dosage; MDRS, Mattis Dementia Rating Scale; MDS-UPDRS, Movement Disorders Society-Unified Parkinson’s Disease Rating. Electrodes coordinates are expressed in the lateral (X, relative to the midline, absolute values), anteroposterior (Y, relative to the posterior commissure) and depth (Z, relative to the ponto-mesencephalic junction with negative values indicating electrodes placed below the PMJ) axes, in mm, relative to the fourth ventricle floor and the PMJ line.

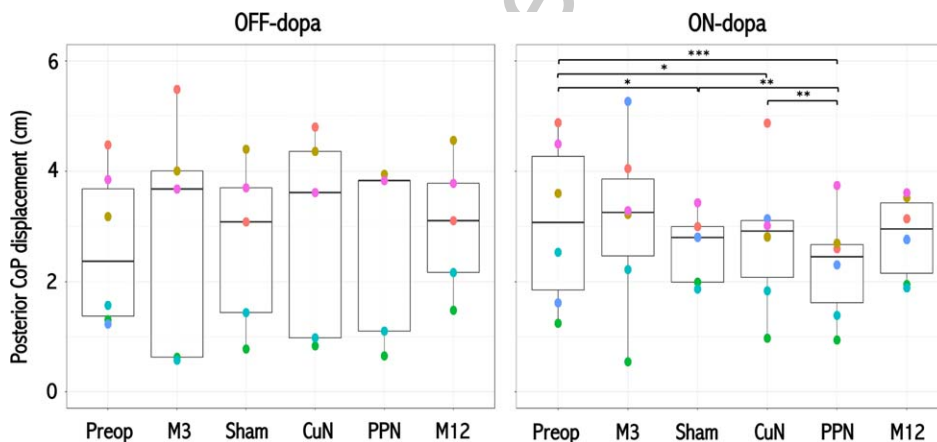


Fig. 5. Effects of MLR DBS on posterior APAs displacement of the center of foot pressure. Posterior displacement of the CoP during the APAs of the gait initiation in the 6 PD patients before surgery (Preop), 3 months after surgery without active DBS (M3); and during the randomized double-blind period with Sham, CuN-DBS, or PPN-DBS, and at the end of the open label period with PPN-DBS (M12); OFF (left graph) and ON-dopa (right graph). Each color point represents an individual patient. One patient (P05, blue circle) could not perform gait initiation Off-dopa during the randomized and open-label periods. Horizontal black lines represent the estimated marginal mean for each condition, and the upper and lower bounds of the rectangles represent the corresponding 95% confidence intervals. APAs, anticipatory postural adjustments; CoP, centre of foot pressure; M, month; PPN, pedunculopontine nucleus; CuN, cuneiform nucleus. * $p < 0.05$; ** $p < 0.01$; *** $p < 10^{-4}$

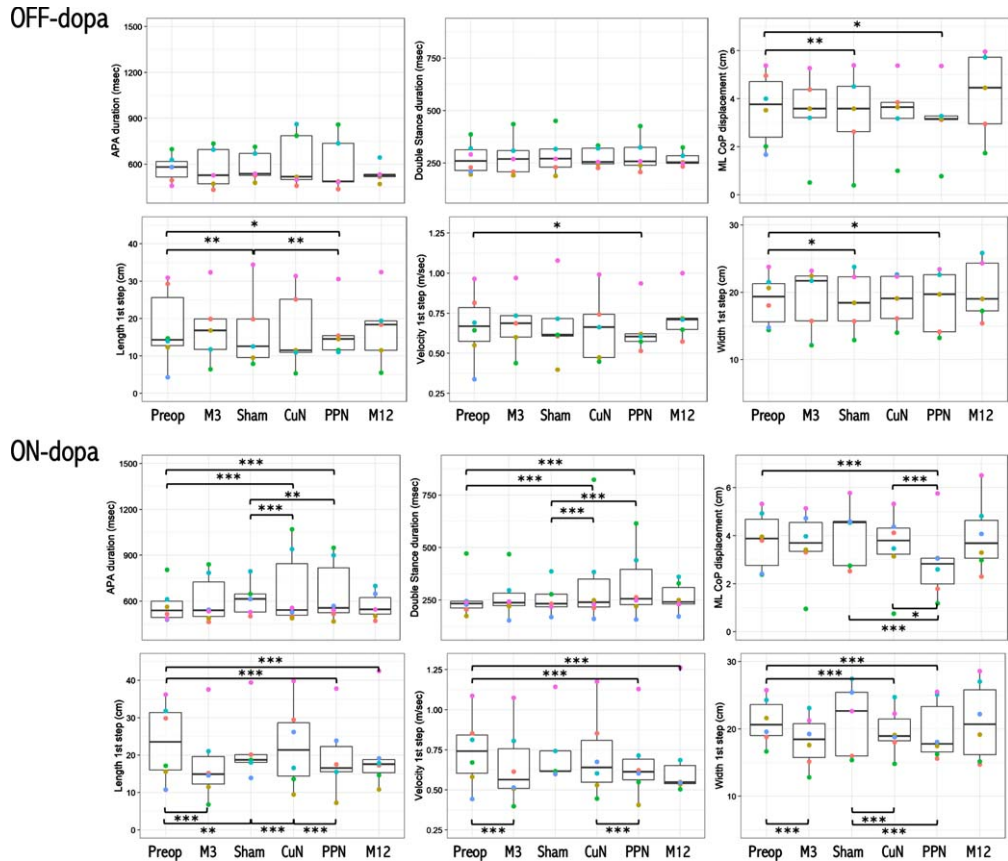


Fig. 6. Effects of CuN, PPN, and sham DBS on initiation gait parameters. Anticipatory postural adjustments (APA) and double-stance durations, APAs mediolateral CoP displacement, first step length, velocity, and width during gait initiation in the 6 PD patients before surgery (Preop), 3 months after surgery without active DBS (M3); and during the randomized double-blind period with Sham, CuN-DBS, or PPN-DBS, and at the end of the open label period with PPN-DBS (M12). Each color point represents an individual patient, obtained in the Off-dopa (upper panel) and On-dopa (bottom panel) conditions. One patient (P05, blue circle) could not perform gait initiation Off-dopa during the randomized and open-label periods. Horizontal black lines represent the estimated marginal mean for each condition, and the upper and lower bounds of the grey rectangles represent the corresponding 95% confidence intervals. CoP, center of foot pressure; ML, mediolateral. * $p < 0.05$; ** $p < 0.01$; *** $p < 0.001$ between treatment conditions.

and 3/6 with sham-DBS, 3/6 patients had higher ABC-scale scores with PPN-DBS, 2/6 patients with CuN-DBS and one with sham-DBS (Fig. 7).

Comparing clinical scales obtained Off vs. On-dopa during both the randomized and open-label periods only revealed a significant decrease in the motor disability score (MDS-UPDRS part 3) at baseline, after surgery without DBS (month 3) and at the end of the open-label follow-up period (month 12), with no significant change On vs. Off-dopa for the “axial”, GABS and Tinetti scales (Table 2).

Changes in gait parameters and clinical scales with PPN-DBS during the open-label period

At the end of the open-label follow up period (month 12) with PPN-DBS vs. before surgery,

On-dopa, the first step length and velocity were significantly lower (Fig. 5), with no other significant change in gait parameters or clinical scales (Table 2). At the individual level, 3 patients (P01, P03, and P06) showed higher FOG-Q and lower ABC scale scores at month 12, relative to inclusion; with small or no change in the three remaining patients (Fig. 7).

Adverse events

All patients were ambulatory the day after surgery. Three serious adverse events were reported in 3 patients (Table 3). One was related to surgery with one electrode displacement of one hemisphere (patient P04). One patient had recurrent falls two months after surgery with the occurrence of a subdural hematoma

390
391
392
393
394
395
396
397
398
399
400
401
402
403
404

405
406
407
408
409
410
411
412
413
414
415
416
417
418

Table 2

Changes in gait and balance disorders, quality of life, cognition and psychiatric signs in 6 PD patients with PPN, CuN, or sham deep brain stimulation

	Baseline	Double-blind period				Open-label period		p^S
		Sham-DBS	CuN-DBS	PPN-DBS	p^*	PPN-DBS	Change during open-label PPN DBS (month 12 vs. baseline)	
MDS-UPDRS part 1	10.3 ± 6.6	13.2 ± 5.7	13.0 ± 4.6	13.3 ± 7.6	1.00	12.7 ± 4.9	2.3 ± 5.6	0.34
MDS-UPDRS part 2								
Off-dopa	31.6 ± 10.1	26.2 ± 9.7	27.7 ± 9.9	25.3 ± 9.1	0.88	28.0 ± 10.8	-1.2 ± 3.1	0.41
On-dopa	19.0 ± 4.2	18.5 ± 7.0	17.3 ± 6.3	17.2 ± 5.4	0.87	17.0 ± 5.7	-2.0 ± 3.0	0.47
Falls severity (item 13)								
Off-dopa	2.2 ± 0.4	2.2 ± 0.8	2.3 ± 0.8	2.0 ± 1.1	0.87	1.8 ± 1.2	-0.3 ± 1.0	0.75
On-dopa	2.0 ± 0.6	2.0 ± 1.1	1.8 ± 0.8	2.5 ± 0.8	0.57	2.0 ± 0.9	0.0 ± 1.1	1.00
FOG severity (item 14)								
Off-dopa	3.2 ± 0.8	3.5 ± 0.5	3.3 ± 0.8	3.3 ± 0.8	0.96	3.2 ± 1.0	0.2 ± 0.4	1.00
On-dopa	2.8 ± 1.0	2.0 ± 1.3	2.2 ± 0.4	1.5 ± 0.5	0.30	1.7 ± 0.5	-0.2 ± 0.8	0.52
MDS-UPDRS part 3								
Off-dopa	43.7 ± 17.7	37.2 ± 10.2	37.0 ± 11.7	34.0 ± 6.9	0.93	36.8 ± 9.4	-0.6 ± 8.4	0.64
On-dopa	24.0 ± 10.1 [£]	29.4 ± 11.2	30.0 ± 11.3	29.0 ± 11.0	0.96	28.2 ± 10.2 [£]	4.2 ± 8.8	1.00
Axial subscore								
Off-dopa	12.0 ± 3.4	11.0 ± 5.7	11.0 ± 4.8	9.8 ± 4.3	0.85	9.8 ± 4.0	-0.8 ± 3.3	1.00
On-dopa	8.3 ± 4.0	8.2 ± 4.8	8.5 ± 3.9	7.7 ± 3.4	0.80	7.8 ± 3.5	-0.5 ± 3.7	0.52
MDS-UPDRS part 4	8.8 ± 1.6	6.7 ± 3.9	7.7 ± 4.2	6.3 ± 3.4	0.69	7.7 ± 4.2	-1.2 ± 3.9	0.68
GABS								
Off-dopa	30.0 ± 16.6	23.8 ± 12.4	24.8 ± 8.6	24.8 ± 11.5	0.97	23.8 ± 9.4	-2.0 ± 13.9	0.47
On-dopa	19.0 ± 9.6	17.2 ± 9.6	18.8 ± 7.1	17.5 ± 9.5	0.86	18.8 ± 9.3	-3.3 ± 12.8	0.78
Tinetti static								
Off-dopa	10.4 ± 5.3	12.2 ± 3.2	12.4 ± 2.3	11.4 ± 2.3	0.82	11.8 ± 2.8	-0.2 ± 2.6	0.85
On-dopa	13.3 ± 2.9	11.4 ± 4.2	12.8 ± 1.3	13.2 ± 1.7	0.63	12.8 ± 1.6	-0.5 ± 1.9	0.38
Tinetti dynamic								
Off-dopa	7.2 ± 4.2	7.4 ± 2.8	8.2 ± 3.2	7.8 ± 2.7	0.88	9.6 ± 2.6	1.6 ± 4.0	0.32
On-dopa	8.8 ± 2.7	10.8 ± 1.1	8.8 ± 2.4	9.8 ± 2.1	0.23	9.3 ± 2.4	0.5 ± 2.7	0.75
RSGE								
Off-dopa	43.0 ± 13.7	37.3 ± 12.6	33.5 ± 10.4	33.8 ± 7.2	0.94	35.3 ± 11.5	-5.6 ± 11.4	0.27
On-dopa	23.2 ± 8.2	25.2 ± 8.2	25.7 ± 6.9	22.2 ± 6.9	0.48	26.3 ± 8.9	3.2 ± 8.4	0.52
FOG-Q	36.3 ± 5.2	33.8 ± 5.3	40.5 ± 6.1	38.3 ± 3.3	0.43	40.0 ± 4.4	3.7 ± 7.2	0.20
ABC scale	57.0 ± 17.2	51.9 ± 14.2	57.9 ± 16.6	59.8 ± 20.4	0.72	56.3 ± 17.1	-0.7 ± 19	1.00
PDQ-39 SI	64.7 ± 22.8	62.0 ± 20.9	68.2 ± 20.4	63.7 ± 20.8	0.75	66.0 ± 20.2	1.7 ± 1.5	0.15
MDRS	140.7 ± 2.1	142.3 ± 1.9	141.0 ± 2.8	140.3 ± 3.7	0.50	142.0 ± 3.1	1.3 ± 3.8	0.23
MADRS	6.2 ± 4.2	6.0 ± 5.1	4.7 ± 2.1	5.2 ± 3.7	0.97	5.3 ± 4.6	-0.8 ± 7.0	0.66
BAS	6.0 ± 5.8	3.7 ± 2.3	3.3 ± 2.1	3.0 ± 2.6	0.87	3.5 ± 3.3	-2.5 ± 7.8	0.40

Values are mean ± standard deviation. ABC, Activities Balance Confidence; BAS, Brief Anxiety Scale; FOG-Q, Freezing of Gait Questionnaire; GABS, Gait And Balance Scale; MADRS, Montgomery and Asberg Depression rating Scale; MDRS, Mattis Dementia rating; MDS-UPDRS, Movement Disorders Society-Unified Parkinson's Disease Rating Scale; PDQ-39 SI, Parkinson's Disease Questionnaire Summary Index; RSGE, Rating Scale for Gait and Equilibrium. * p values for the comparison between values with Sham vs. CuN-DBS vs. PPN-DBS, [£] p values for the comparison between values at Month 12 with PPN-DBS relative to baseline. [£] $p < 0.05$ On relative to Off-dopa condition.

419 revealed by a mental confusion that necessitated
 420 hospitalization and reduction of the apomorphine
 421 daily dosage and resolved spontaneously (P03). One
 422 patient had an abdominal wall abscess necessitating
 423 surgery 7 months after DBS surgery (P01). Twenty-
 424 seven non-serious adverse events were reported
 425 (Table 3). Falling was the most common adverse
 426 event (24/27) and reported in all patients, leading
 427 to shoulder injury in one patient (P02), and scalp
 428 or face wound in 3 patients (P02, P05, and P07).
 429 Lastly, comparing gait parameters before (inclusion)

vs. post-surgery (month 3), we observed significant
 decreases in the step length (On-dopa Fig. 4), width
 and velocity (On-dopa, not shown).

DISCUSSION

In this randomized, double-blind, controlled trial
 of 6 PD patients with severe and dopa-resistant gait
 and balance disorders, we assessed for the first time
 the effects of a 2-month period of PPN- vs. CuN-
 vs. sham-DBS, using a new individually-adjustable

430
 431
 432
 433
 434
 435
 436
 437
 438

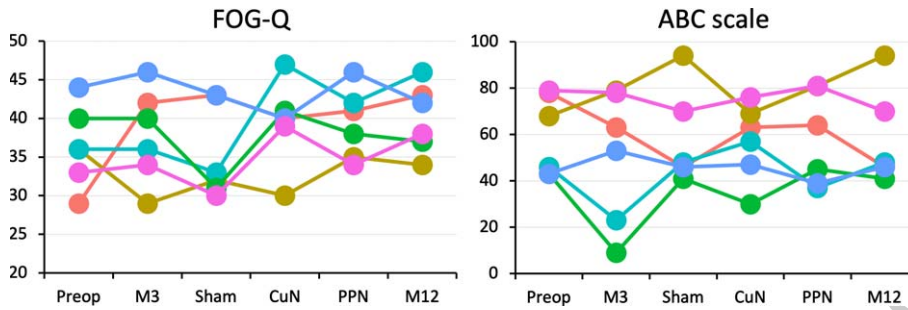


Fig. 7. Effects of CuN, PPN and sham DBS on freezing of gait and feelings of imbalance scores. Effects of surgery (M3), Sham, CuN and PPN-DBS during the randomized controlled period and after 3 months with PPN-DBS during the open-label period (M12) on the FOG severity and imbalance feelings. FOG-Q, freezing of gait questionnaire; ABC, Activities Balance Confidence.

Table 3
Adverse events

	Before randomization	Active PPN stimulation	Active CuN stimulation	Sham stimulation	Open-label PPN stimulation
Serious adverse events (<i>n</i> = 3)*					
Surgery-related					
Electrode displacement	1 (P05) [‡]	0	0	0	0
Disease-related					
Falls with subdural hematoma	1 (P03)	0	0	0	0
Other					
Abdominal wall abscess	0	1 (P02)	0	0	0
Non-serious adverse events (<i>n</i> = 29) [§]					
Surgery-related					
Stimulation-related	0	0	0	0	0
Disease-related					
Falls	3 (P02, P03, P08)	2 (P03 and P05)	4 (P02, P03, P07)	1 (P01)	2 (P02 and P05)
Falls with injury	1 (P05)	2 (P02 and P07)	0	0	0
Urinary retention	0	0	0	0	1 (P07)
Orthostatic hypotension	0	1 (P03)	1 (P03)	1 (P07)	0
Visual hallucinations	0	1 (P05)	0	0	0
Other					
Ear pain	0	0	0	1 (P03)	0
Leg oedema	0	0	0	0	1 (P02)
Urinary infection	1 (P05)	0	0	0	0
Prostatitis	0	1 (P05)	0	0	0
Car accident without injury	0	0	0	1 (P05)	0
Anxiety	0	0	0	1 (P08)	0
Muscular pain	0	1 (P08)	0	0	0

Data are the number of adverse events, with the patients who had the adverse events in parentheses. *3 serious adverse events occurred in these 6 patients. [‡]The safety committee advocated no reimplantation. [§]29 non-serious adverse events occurred in these 6 patients.

439 digital histological atlas [35]. We found better antero-
 440 posterior APAs, velocity and step length with CuN-
 441 vs. sham-DBS, but no significant improvement in
 442 any clinical outcome or quality of life was observed
 443 with either CuN- or PPN-DBS. We even quantified
 444 a better effect of sham-DBS on step cadence, double
 445 stance duration, FOG episodes and turn task during
 446 gait recordings. One year after surgery, we did not
 447 observe any significant improvement with PPN-DBS
 448 (open label) relative to pre-surgery levels.

449 These results partly reproduce those obtained in
 450 our previous controlled study of 4 patients with higher

451 APAs and step length with MLR-DBS applied above
 452 the PMJ [29]. However, these changes did not trans-
 453 late into a significant clinical benefit, consistent with
 454 two controlled studies with MLR-DBS applied just
 455 above or at the level of the PMJ [28–30]. In these pre-
 456 vious studies and other open-label studies, about half
 457 of patients described however a subjective improve-
 458 ment in FOG or falls that could last more than 2
 459 years after surgery [46, 47]. In the present study, 3/6
 460 patients also had subjective lower scores for FOG-Q
 461 with CuN-DBS suggesting that stimulation applied
 462 in the dorsal MLR may be beneficial. This is in line

with the demonstrated role of the CuN in the triggering of gait initiation and high speed locomotion in animals [16, 17]. Using fMRI, the CuN-cerebellar functional network has been also shown to be more involved in dual-task walking [25], a locomotor activity altered in freezing PD patients [48]. However, 3/6 of our patients had better FOG-Q scores with sham-DBS, with fewer number of FOG episodes during forward gait. Finally, these results suggest that continuous 2-month CuN-DBS is not effective to promote clinical and daily-life benefit on FOG and/or falls for advanced PD patients.

With PPN-DBS, we found no objective improvement in any gait parameters during the randomized period, with conversely higher FOG episodes during forward gait, lower step length and turn amplitude; and significant lower step length after open label PPN-DBS. This result is not in accordance with decreased time and increased cadence during the turn task found in 7 PD patients with MLR-DBS applied below the PMJ, with however, no significant change in spatiotemporal parameters of straight-line gait [32]. The DBS electrodes in that study were also located more deeply within the pons, thus possibly modulating the activity of the descending MLR-spinal pathways, also involved in locomotion and postural controls in mammals [13]. The absence of improvement with PPN-DBS found in our patients could also be related to the differences in the patient selection, with On-dopa FOG and falls suggesting a high proportion of cholinergic cell death preventing to obtain benefit using DBS [10, 33]. Finally, one should also take into consideration that even though the surgery was well tolerated, MLR surgery has potential risks. The fact that these advanced PD patients had recurrent falls represent an additional risk factor with implanted electrodes and one of our patients indeed presented a non-surgical subdural hematoma following falls.

Differences in DBS programming may also explain the variability of MLR-DBS clinical effects, and the parameter settings used during the double-blind period could be not completely optimal. The duration of DBS with a 2-month period may not be long enough, a sustained improvement or no aggravation of FOG/falls being reported two years after surgery suggesting a possible gradual alleviation [26, 46, 49]. In our study, 4/6 patients reported a subjective improvement in the hours following DBS parameters changes, with two patients after PPN-DBS and two after CuN-DBS (not shown). A short, 30-minute duration of PPN-DBS has been reported to induce

positive effects on gait [32] and such subjective short duration effects were also previously reported [28], thus leading the proposal of intermittent or diurnal cycling DBS, [50] but without significant objective improvement. Finally, no evidence of the “good” parameters have been determined up to now [33], and we used low frequency stimulation as also proposed by others teams, with similar amplitude [51].

Limitations

Several limitations of this study need to be pointed out. Firstly, these results were obtained in a small group of patients, thus limiting the generalizability of our data. Indeed, at the request of the safety board the study was prematurely halted and only half of the patients previously plan to be included in this study were finally included, randomized, and assessed. This under-powered the study and prevented us to fully test the efficacy of MLR-DBS for these severe PD patients. However, the fact that all the patients presented a similar form of the disease, were precisely assessed using specific tools to measure gait and balance controls, and that all the electrodes were precisely positioned within both the CuN and PPN using a histological individualized atlas of the MLR, with no dramatic clinical change in gait and balance disorders at an individual level favored the robustness of these results. Secondly, the occurrence of side effects also rendered the stimulation parameter selection difficult, and the double-blind design of our study may also have prevented us from optimally setting the DBS parameters, with stimulation amplitude being potentially too low to produce significant clinical effect.

CONCLUSION

This study suggests that both PPN- and CuN-DBS are not clinically efficient to improve severe and dopa-resistant gait and balance disorders in PD patients. Further research is needed to test other parameter settings to modulate this particular anatomical area, such as intermittent stimulation and longer double-blind period of stimulation, and using different protocol designs allowing setting optimal parameters before blinded assessments or parallel group study to compare the changes in gait and balance disorders over time [52]. Finally, we need to further understand the role of the MLR in gait and balance control in humans using new imaging or neurophysiological approaches, and also its dysfunction in FOG or falls using animal models research.

ACKNOWLEDGMENTS

We extend our deepest thanks to the patients who participated in this study. We also thank the nurses and administrative staff of the Clinical Investigation Centre for their help in the conduct of the study. We thank Prs J.P. Azulay, S. Chabardes, S. Derrey, D. Guehl, M. Guenot, and C. Moreau for their independent contributions to the study with respect to ethical and safety issues.

This study was supported by the Institut National de la Recherche Médicale (INSERM) and the ‘Investissements d’avenir’ program (ANR-10-IAIHU-06 and ANR-11-INBS-0006) and grants from the Michael J Fox Foundation for Parkinson’s disease (grant number: 10019). JB was supported by a grant from the Fondation pour la Recherche Médicale. YM was supported by a grant from the European Union’s Horizon 2020 research and innovation programme under the Marie Skłodowska-Curie-Horizon 2020 (H2020-MSCA-IF-2019, grant agreement No 898265).

CONFLICT OF INTEREST

The authors declare to have no conflict of interest relative to the research.

SUPPLEMENTARY MATERIAL

The supplementary material is available in the electronic version of this article: <https://dx.doi.org/10.3233/JPD212793>.

REFERENCES

- [1] Kempster PA, O’Sullivan SS, Holton JL, Revesz T, Lees AJ (2010) Relationships between age and late progression of Parkinson’s disease: a clinico-pathological study. *Brain* **133**, 1755-1762.
- [2] Nutt JG, Bloem BR, Giladi N, Hallett M, Horak FB, Nieuwboer A (2011) Freezing of gait: moving forward on a mysterious clinical phenomenon. *Lancet Neurol* **10**, 734-744.
- [3] Bloem BR, Grimbergen YA, Cramer M, Willemsen M, Zwiderman AH (2001) Prospective assessment of falls in Parkinson’s disease. *J Neurol* **248**, 950-958.
- [4] Nonnekes J, Snijders AH, Nutt JG, Deuschl G, Giladi N, Bloem BR (2015) Freezing of gait: a practical approach to management. *Lancet Neurol* **14**, 768-778.
- [5] Fasano A, Aquino CC, Krauss JK, Honey CR, Bloem BR (2015) Axial disability and deep brain stimulation in patients with Parkinson disease. *Nat Rev Neurol* **11**, 98-110.
- [6] Bloem BR, Beckley DJ, van Dijk JG, Zwiderman AH, Remler MP, Roos RA (1996) Influence of dopaminergic medication on automatic postural responses and balance impairment in Parkinson’s disease. *Mov Disord* **11**, 509-521.
- [7] Rodriguez-Oroz MC, Obeso JA, Lang AE, Houeto JL, Pollak P, Rehncrona S, Kulisevsky J, Albanese A, Volkman J, Hariz MI, Quinn NP, Speelman JD, Guridi J, Zamarbide I, Gironell A, Molet J, Pascual-Sadano B, Pidoux B, Bonnet AM, Agid Y, Xie J, Benabid AL, Lozano AM, Saint-Cyr J, Romito L, Contarino MF, Scerrati M, Fraix V, Van Blercom N (2005) Bilateral deep brain stimulation in Parkinson’s disease: a multicentre study with 4 years follow-up. *Brain* **128**, 2240-2249.
- [8] Tsuboi T, Lemos Melo Lobo Joffli Lopes J, Moore K, Patel B, Legacy J, Ratajska AM, Bowers D, Eisinger RS, Almeida L, Foote KD, Okun MS, Ramirez-Zamora A (2020) Long-term clinical outcomes of bilateral GPi deep brain stimulation in advanced Parkinson’s disease: 5 years and beyond. *J Neurosurg*, doi: 10.3171/2020.6.JNS20617.
- [9] Snijders AH, Leunissen I, Bakker M, Overeem S, Helmich RC, Bloem BR, Toni I (2011) Gait-related cerebral alterations in patients with Parkinson’s disease with freezing of gait. *Brain* **134**, 59-72.
- [10] Sebillle SB, Rolland AS, Faillot M, Perez-Garcia F, Colomb-Clerc A, Lau B, Dumas S, Fernandez-Vidal S, Welter ML, Francois C, Bardinet E, Karachi C (2019) Normal and pathological neuronal distribution of the human mesencephalic locomotor region. *Mov Disord* **34**, 218-227.
- [11] Karachi C, Grabli D, Bernard FA, Tande D, Wattiez N, Belaid H, Bardinet E, Prgent A, Nothacker HP, Hunot S, Hartmann A, Lehericy S, Hirsch EC, Francois C (2010) Cholinergic mesencephalic neurons are involved in gait and postural disorders in Parkinson disease. *J Clin Invest* **120**, 2745-2754.
- [12] Fasano A, Herman T, Tessitore A, Strafella AP, Bohnen NI (2015) Neuroimaging of Freezing of Gait. *J Parkinsons Dis* **5**, 241-254.
- [13] Grillner S, Shik ML (1973) On the descending control of the lumbosacral spinal cord from the “mesencephalic locomotor region.” *Acta Physiol Scand* **87**, 320-333.
- [14] Garcia-Rill E, Houser CR, Skinner RD, Smith W, Woodward DJ (1987) Locomotion-inducing sites in the vicinity of the pedunculopontine nucleus. *Brain Res Bull* **18**, 731-738.
- [15] Takakusaki K, Oohinata-Sugimoto J, Saitoh K, Habaguchi T (2004) Role of basal ganglia-brainstem systems in the control of postural muscle tone and locomotion. *Prog Brain Res* **143**, 231-237.
- [16] Xiao C, Cho JR, Zhou C, Treweek JB, Chan K, McKinney SL, Yang B, Gradinaru V (2016) Cholinergic mesopontine signals govern locomotion and reward through dissociable midbrain pathways. *Neuron* **90**, 333-347.
- [17] Caggiano V, Leiras R, Goñi-Errro H, Masini D, Bellardita C, Bouvier J, Caldeira V, Fisone G, Kiehn O (2018) Midbrain circuits that set locomotor speed and gait selection. *Nature* **553**, 455-460.
- [18] Marchal V, Sellers J, Péligrini-Issac M, Galléc A, Bertasi E, Valabrègue R, Lau B, Lebourcier P, Bardinet E, Welter ML, Karachi C (2019) Deep brain activation patterns involved in virtual gait without and with a doorway: An fMRI study. *PLoS One* **14**, e0223494.
- [19] Jahn K, Deutschlander A, Stephan T, Kalla R, Hufner K, Wagner J, Strupp M, Brandt T (2008) Supraspinal locomotor control in quadrupeds and humans. *Prog Brain Res* **171**, 353-362.

- 674 [20] la Fougere C, Zwergal A, Rominger A, Forster S, Fesl G, 739
675 Dieterich M, Brandt T, Strupp M, Bertenstein, Jahn K (2010) 740
676 Real versus imagined locomotion: a [18F]-FDG PET-fMRI 741
677 comparison. *Neuroimage* **50**, 1589-1598. 742
- 678 [21] Karachi C, Andre A, Bertasi E, Bardinet E, Lehericy S, 743
679 Bernard FA (2012) Functional parcellation of the lateral 744
680 mesencephalus. *J Neurosci* **32**, 9396-9401. 745
- 681 [22] Lau B, Welter M-L, Belaid H, Fernandez Vidal S, Bardinet 746
682 E, Grabli D, Karachi C (2015) The integrative role of the 747
683 pedunculopontine nucleus in human gait. *Brain* **138**, 1284- 748
684 1296. 749
- 685 [23] Tattersall TL, Stratton PG, Coyne TJ, Cook R, Silberstein 750
686 P, Silburn PA, Windels F, Sah P (2014) Imagined gait 751
687 modulates neuronal network dynamics in the human pedunc- 752
688 ulopontine nucleus. *Nat Neurosci* **17**, 449-454. 753
- 689 [24] Molina R, Hass CJ, Sowalsky K, Schmitt AC, Opi E, Roper 754
690 JA, Martinez-Ramirez D, Hess CW, Foote KD, Okun MS, 755
691 Gunduz A (2020) Neurophysiological correlates of gait in 756
692 the human basal ganglia and the PPN region in Parkinson's 757
693 disease. *Front Hum Neurosci* **14**, 194. 758
- 694 [25] Wei P, Zou T, Lv Z, Fan Y (2020). Functional MRI reveals 759
695 locomotion-control neural circuits in human brainstem. 760
696 *Brain Sci* **10**, 757. 761
- 697 [26] Thevathasan W, Coyne TJ, Hyam JA, Kerr G, Jenkinson 762
698 N, Aziz TZ, Silburn PA (2011) Pedunculopontine nucleus 763
699 stimulation improves gait freezing in Parkinson disease. 764
700 *Neurosurgery* **69**, 1248-1253; discussion 1254. 765
- 701 [27] Mazzone P, Insola A, Sposato S, Scarnati E (2009) The 766
702 deep brain stimulation of the pedunculopontine tegmental 767
703 nucleus. *Neuromodulation* **12**, 191-204. 768
- 704 [28] Ferraye MU, Debu B, Fraix V, Goetz L, Ardouin C, Yelnik J, 769
705 Henry-Lagrange, Seigneuret E, Piallat B, Krack P, Le Bas 770
706 JF, Benabid AL, Chabardes S, Pollak P (2010) Effects of 771
707 pedunculopontine nucleus area stimulation on gait disorders 772
708 in Parkinson's disease. *Brain* **133**, 205-214. 773
- 709 [29] Welter M-L, Demain A, Ewenczyk C, Czernecki V, Lau 774
710 B, El Helou A, Belaid H, Yelnik J, François C, Bardinet 775
711 E, Karachi C, Grabli D (2015) PPNa-DBS for gait and 776
712 balance disorders in Parkinson's disease: a double-blind, 777
713 randomised study. *J Neurol* **262**, 1515-1525. 778
- 714 [30] Moro E, Hamani C, Poon YY, Al-Khairallah T, Dostrovsky 779
715 JO, Hutchison WD, Lozano AM (2010) Unilateral peduncu- 780
716 lopontine stimulation improves falls in Parkinson's disease. 781
717 *Brain* **133**, 215-224. 782
- 718 [31] Hazrati LN, Wong JC, Hamani C, Lozano AM, Poon YY, 783
719 Dostrovsky JO, Hutchison WD, Zadikoff C, Moro E (2012). 784
720 Clinicopathological study in progressive supranuclear palsy 785
721 with pedunculopontine stimulation. *Mov Disord* **27**, 1304- 786
722 1307. 787
- 723 [32] Thevathasan W, Cole MH, Graepel CL, Hyam JA, Jenkinson 788
724 N, Brittain JS, Coyne TJ, Silburn PA, Aziz TZ, Kerr G, 789
725 Brown P (2012) A spatiotemporal analysis of gait freezing 790
726 and the impact of pedunculopontine nucleus stimulation. 791
727 *Brain* **135**, 1446-1454. 792
- 728 [33] Thevathasan W, Moro E (2019). What is the therapeutic 793
729 mechanism of pedunculopontine nucleus stimulation in 794
730 Parkinson's disease? *Neurobiol Dis* **128**, 67-74. 795
- 731 [34] Goetz CG, Tilley BC, Shaftman SR, Stebbins GT, Fahn 796
732 S, Martinez-Martin P, Poewe W, Sampaio C, Ster, MB, 797
733 Dodel R, Dubois B, Holloway R, Jankovic J, Kulisevsky 798
734 J, Lang AE, Lees A, Leurgans S, LeWitt PA, Nyen- 799
735 huis D, Olanow CW, Rascol O, Schrag A, Teresi JA, 800
736 van Hilten JJ, LaPelle N, Movement Disorder Society 801
737 UPDRS Revision Task Force (2008) Movement Disorder 802
738 Society-sponsored revision of the Unified Parkinson's 803
- Disease Rating Scale (MDS-UPDRS): scale presentation 739
and clinimetric testing results. *Mov Disord* **23**, 2129- 740
2170. 741
- [35] Sébille SB, Rolland A-S, Welter M-L, Bardinet E, Santin 742
MD (2019) Post mortem high resolution diffusion MRI for 743
large specimen imaging at 11.7 T with 3D segmented echo- 744
planar imaging. *J Neurosci Methods* **311**, 222-234. 745
- [36] Jacobs J V, Nutt JG, Carlson-Kuhta P, Stephens M, Horak 746
FB (2009) Knee trembling during freezing of gait represents 747
multiple anticipatory postural adjustments. *Exp Neurol* **215**, 748
334-341. 749
- [37] Thomas M, Jankovic J, Suteerawattananon M, Wankadia S, 750
Caroline KS, Vuong KD, Protas E (2004) Clinical gait and 751
balance scale (GABS): validation and utilization. *J Neurol* 752
Sci **217**, 89-99. 753
- [38] Martinez-Martin P, Garcia Urria D, del Ser Quijano T, Bal- 754
seiro Gomez J, Gomez Utrero E, Pineiro R, Andres MT 755
(1997) A new clinical tool for gait evaluation in Parkinson's 756
disease. *Clin Neuropharmacol* **20**, 183-194. 757
- [39] Esculier JF, Vaudrin J, Beriault P, Gagnon K, Tremblay LE 758
(2012) Home-based balance training programme using Wii 759
Fit with balance board for Parkinson's disease: a pilot study. 760
J Rehabil Med **44**, 144-150. 761
- [40] Giladi N, Shabtai H, Simon ES, Biran S, Tal J, Korczyn 762
AD (2000) Construction of freezing of gait questionnaire 763
for patients with Parkinsonism. *Parkinsonism Relat Disord* 764
6, 165-70. 765
- [41] Powell LE, Myers AM (1995) The Activities-specific Bal- 766
ance Confidence (ABC) Scale. *J Gerontol A Biol Sci Med* 767
Sci **50A**, M28-34. 768
- [42] Mattis S (1988) *Dementia Rating Scale*. Psychological 769
Assessment Resources, Florida. 770
- [43] Asberg M, Schalling D (1979) Construction of a new 771
psychiatric rating instrument, the Comprehensive 772
Psychopathological Rating Scale (CPRS). *Prog Neuropsy- 773
chopharmacol* **3**, 405-412. 774
- [44] Montgomery SA, Asberg M (1979) A new depression scale 775
designed to be sensitive to change. *Br J Psychiatry* **134**, 776
382-389. 777
- [45] Tyrer P, Owen RT, Cicchetti D V (1984) The brief scale for 778
anxiety: a subdivision of the comprehensive psychopatho- 779
logical rating scale. *J Neurol Neurosurg Psychiatry* **47**, 780
970-975. 781
- [46] Goetz L, Bhattacharjee M, Ferraye MU, Fraix V, Maineri 782
C, Nosko D, Fenoy AJ, Piallat B, Torres N, Krainik A, 783
Seigneuret E, David O, Parent M, Parent A, Pollak P, 784
Benabid AL, Debu B, Chabardes S (2019) Deep brain stimu- 785
lation of the pedunculopontine nucleus area in Parkinson 786
disease: MRI-based anatomoclinical correlations and opti- 787
mal target. *Neurosurgery* **84**, 506-518. 788
- [47] Mestre TA, Sidiropoulos C, Hamani C, Poon YY, Lozano 789
AM, Lang AE, Moro E (2016) Long-term double-blinded 790
unilateral pedunculopontine area stimulation in Parkinson's 791
disease. *Mov Disord* **31**, 1570-1574. 792
- [48] Spildooren J, Vercruyse S, Desloovere K, Vandenberghe 793
W, Kerckhofs E, Nieuwboer A (2010) Freezing of gait in 794
Parkinson's disease: the impact of dual-tasking and turning. 795
Mov Disord **25**, 2563-2570. 796
- [49] Mazzone P, Insola A, Valeriani M, Caliandro P, Sposato S, 797
Scarnati E (2012) Uncertainty, misunderstanding and the 798
pedunculopontine nucleus: the exhumation of an already 799
buried dispute. *Acta Neurochir* **154**, 1523-1527. 800
- [50] Dayal V, Rajabian A, Jahanshahi M, Aviles-Olmos I, Cowie 801
D, Peters A, Day B, Hyam J, Akram H, Limousin P, Hariz 802
M, Zrinzo L, Foltynie T (2021) Pedunculopontine nucleus 803

- 804 deep brain stimulation for parkinsonian disorders: a case
805 series. *Stereotact Funct Neurosurg* **99**, 287-294.
- 806 [51] Nosko D, Ferraye MU, Fraix V, Goetz L, Chabardes S,
807 Pollak P, Debû B (2015) Low-frequency versus high-
808 frequency stimulation of the pedunculopontine nucleus area
809 in Parkinson's disease: a randomised controlled trial. *J Neu-
810 rol Neurosurg Psychiatry* **86**, 674-679.
- [52] Fins JJ, Kubu CS, Mayberg HS, Merkel R, Nuttin B, 811
Schlaepfer TE (2017) Being open minded about neuromod- 812
ulation trials: Finding success in our "failures." *Brain Stimul* 813
10, 181-186. 814

Uncorrected Author Proof