



HAL
open science

IGF2: Development, Genetic and Epigenetic Abnormalities

Céline Sélénou, Frédéric Brioude, Eloïse Giabicani, Marie-Laure Sobrier, Irène Netchine

► **To cite this version:**

Céline Sélénou, Frédéric Brioude, Eloïse Giabicani, Marie-Laure Sobrier, Irène Netchine. IGF2: Development, Genetic and Epigenetic Abnormalities. *Cells*, 2022, 11 (12), pp.1886. 10.3390/cells11121886 . hal-03711849

HAL Id: hal-03711849


<https://hal.sorbonne-universite.fr/hal-03711849>

Submitted on 1 Jul 2022

HAL is a multi-disciplinary open access archive for the deposit and dissemination of scientific research documents, whether they are published or not. The documents may come from teaching and research institutions in France or abroad, or from public or private research centers.

L'archive ouverte pluridisciplinaire **HAL**, est destinée au dépôt et à la diffusion de documents scientifiques de niveau recherche, publiés ou non, émanant des établissements d'enseignement et de recherche français ou étrangers, des laboratoires publics ou privés.

IGF2: Development, Genetic and Epigenetic Abnormalities

Céline Sélénou¹, Frédéric Brioude^{1,2} , Eloïse Giabicani^{1,2}, Marie-Laure Sobrier¹ and Irène Netchine^{1,2,*}

¹ Centre de Recherche Saint-Antoine, INSERM, Sorbonne Université, F-75012 Paris, France; celine.selenou@inserm.fr (C.S.); frederic.brioude@aphp.fr (F.B.); eloise.giabicani@aphp.fr (E.G.); marie-laure.sobrier@inserm.fr (M.-L.S.)

² Assistance Publique-Hôpitaux de Paris (AP-HP), Sorbonne University, F-75012 Paris, France

* Correspondence: irene.netchine@aphp.fr; Tel.: +33-144736621

Abstract: In the 30 years since the first report of parental imprinting in insulin-like growth factor 2 (*Igf2*) knockout mouse models, we have learnt much about the structure of this protein, its role and regulation. Indeed, many animal and human studies involving innovative techniques have shed light on the complex regulation of *IGF2* expression. The physiological roles of IGF-II have also been documented, revealing pleiotropic tissue-specific and developmental-stage-dependent action. Furthermore, in recent years, animal studies have highlighted important interspecies differences in IGF-II function, gene expression and regulation. The identification of human disorders due to impaired *IGF2* gene expression has also helped to elucidate the major role of IGF-II in growth and in tumor proliferation. The Silver–Russell and Beckwith–Wiedemann syndromes are the most representative imprinted disorders, as they constitute both phenotypic and molecular mirrors of *IGF2*-linked abnormalities. The characterization of patients with either epigenetic or genetic defects altering *IGF2* expression has confirmed the central role of IGF-II in human growth regulation, particularly before birth, and its effects on broader body functions, such as metabolism or tumor susceptibility. Given the long-term health impact of these rare disorders, it is important to understand the consequences of *IGF2* defects in these patients.

Keywords: *IGF2*; growth; Silver–Russell syndrome; Beckwith–Wiedemann syndrome; parental imprinting



Citation: Sélénou, C.; Brioude, F.; Giabicani, E.; Sobrier, M.-L.; Netchine, I. *IGF2*: Development, Genetic and Epigenetic Abnormalities. *Cells* **2022**, *11*, 1886. <https://doi.org/10.3390/cells11121886>

Academic Editor: Haim Werner

Received: 1 May 2022

Accepted: 6 June 2022

Published: 10 June 2022

Publisher's Note: MDPI stays neutral with regard to jurisdictional claims in published maps and institutional affiliations.



Copyright: © 2022 by the authors. Licensee MDPI, Basel, Switzerland. This article is an open access article distributed under the terms and conditions of the Creative Commons Attribution (CC BY) license (<https://creativecommons.org/licenses/by/4.0/>).

1. Introduction

Insulin-like growth factor two (IGF-II) is a key protein regulating growth, particularly during normal fetal development, but it is also often dysregulated during tumorigenesis [1–3]. In this review, we focus on the role of IGF-II in physiological functions and its regulation by *cis* or *trans* genetic factors. We do not consider here the role of IGF-II in the context of tumors, or its regulation by environmental factors.

IGF-II belongs to a larger system including several different regulatory factors and generally referred to as the “IGF system” that we will briefly present. IGF-I and IGF-II are the main ligands of the type 1 IGF receptor (IGF-1R). This tyrosine kinase receptor is composed of an extracellular domain consisting of an alpha chain, a transmembrane domain, and an intracellular domain consisting of a beta chain carrying the tyrosine kinase sites. The ligand binds dimerized IGF-1R and transmit the resulting signal (Figure 1) [4].

The binding of IGF-I or IGF-II to IGF-1R leads to activation of the downstream MAP kinase and PI3 kinase signaling pathways [5,6]. IGF-1R has a higher affinity for IGF-I than for IGF-II ($K_d = 1.5$ nM and 3.0 nM, respectively) [7,8]. Thanks to its high degree of similarity to IGF-1R, the insulin receptor (INSR) can also bind IGFs, but with negligible affinity for IGF-I, and with only type A INSR having a five-fold lower affinity for IGF-II than for insulin [9,10]. Another receptor, the type 2 IGF receptor (IGF-2R), which is a mannose-6-phosphate cation-dependent receptor, also specifically binds IGF-II [11–13]. Its role has been demonstrated in IGF-II clearance through lysosomal degradation and

more recent studies in rodents stated for its role in memory enhancement processes [14–18]. The plasma half-lives of both IGF-I and IGF-II are extended by binding proteins (IGFBP). Six different IGFBPs have been identified, each with relative different affinities between IGFs but binding IGFs with a higher affinity than IGF-1R [19–23]. IGFBP-3 and -5 can also form a larger complex with the acid-labile subunit (ALS), which can bind IGFs, increasing the stability of these factors in the blood [24]. The bioavailability of IGFs is dependent from the homeostasis between their bound and free forms which is regulated through IGFBP proteolysis [23,25–28]. As an illustrating example, PAPP-A2 (Pregnancy-associated Plasma Protein-A2) is a metalloproteinase which specifically cleaves IGF from IGFBP-3 and -5 to allow IGF activity [29,30]. Recently, pathogenic variation in *PAPPA2* has been reported in growth-retarded children resulting from decreased IGF bioactivity [31].

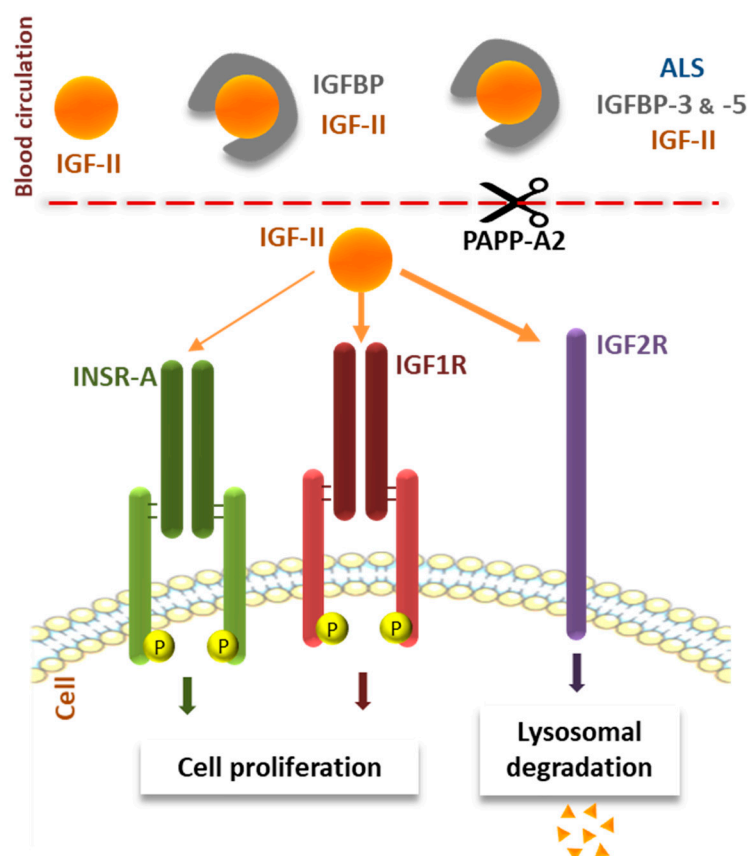


Figure 1. Schematic representation of the modes of action of IGF-II. In the bloodstream, IGF-II is mostly bound in a ternary complex with the acid-labile subunit (ALS) and IGF-binding proteins (IGFBP)-3 and -5. Once released from this complex by PAPP-A2 proteolysis, IGF-II can bind either the type A insulin receptor (INSR-A) or IGF receptor type 1 or 2 (IGF-1R and IGF-2R), inducing cell proliferation or IGF-II clearance.

IGF-II is secreted, mostly via the placenta, during pregnancy [32,33]. After birth, the IGF-II circulating in the bloodstream for the greater part results from secretion from hepatocytes, but unlike that of IGF-I, this secretion is not dependent on growth hormone (GH) secretion [34,35].

IGF-II synthesis results from the expression of *IGF2*, an imprinted gene located in the chromosome 11p15.5 region. Imprinted genes are characterized by their monoallelic expression, which is dependent on the parental origin of the allele. This pattern of expression is controlled by epigenetic marks on differentially methylated regions (DMR) known as imprinting control regions (ICR) [36,37]. In the 11p15.5 region, *H19/IGF2*: InterGenic-DMR (IG-DMR or ICR1) is methylated on the paternal allele, driving the expression of the pa-

ternal *IGF2* allele, whereas the absence of methylation on the maternal allele leads to the expression of *H19*, a non-coding transcript (Figure 2).

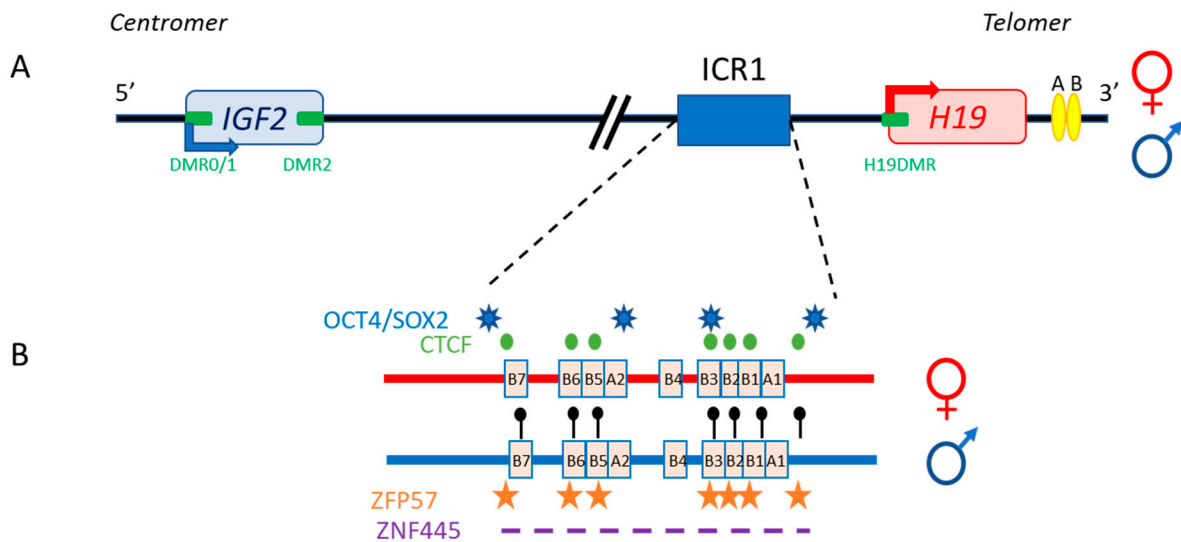


Figure 2. The human *IGF2/H19* 11p15.5 locus. (A) The *IGF2* and *H19* genes are separated by about 80 kb. *IGF2* is paternally expressed (blue arrow), whereas *H19* is maternally expressed (red arrow). The four DMR (green boxes) and enhancers (yellow ellipses) are represented. (B) *H19/IGF2:IG-DMR* (ICR1) in detail: OCT4/SOX2 (blue stars) and CTCF (green circles) binding sites on the maternal allele (red), and methylation sites (black lollipops), ZFP57 binding sites (orange stars) and the undefined ZNF445 binding site consensus sequence (purple dash) on the paternal allele (blue) are shown.

2. Structural and Regulation Aspects

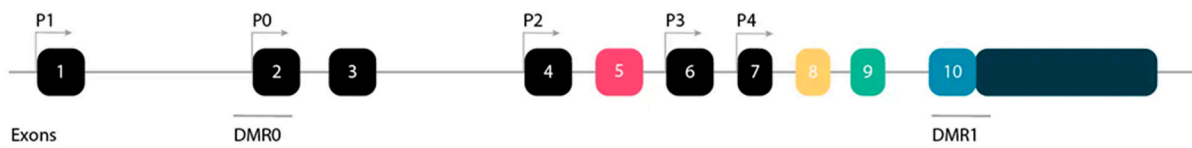
2.1. Main Characteristics, Linear Organization

In 2019, Baral et al. unraveled the complexity of the genomic and transcriptional organization of the *IGF2/Igf2* locus, by using human or mouse DNA segments as queries in genome analyses, and RNA sequencing libraries (complete review in [38]). *IGF2* (ENSG00000167244) is composed of 10 exons and five promoters, whereas its mouse counterpart is located on chromosome 7, and is composed of eight exons and four promoters.

The five human *IGF2* promoters control the expression of different non-coding exons, but all transcripts include exons 8–10, which encode the IGF-II protein precursor and the 3' untranslated RNA. Human promoters 1 and 2 (P1 and P2) are species specific, and P2 regulates two classes of *IGF2* transcripts differing due to alternative splicing of exon 5 (Figure 3).

The human-secreted IGF-II is composed of 67 amino acids organized into four domains, the B, C, A, and D domains (listed in order from the N- to the C-terminus) [39]. Two types of protein precursors with different presumptive N-terminal signal peptides (consisting of 24 or 80 amino acids) give rise to mature human IGF-II, depending on the inclusion or exclusion of exon 5 in the *IGF2* mRNA. The E peptide of the IGF-II precursor (also named “big” IGF-II), encoded by the 3'-end mRNA, is 89 amino acids long (Figure 3). It has been involved in paraneoplastic pancreatic independent hypoglycemia [40,41].

The 11p15.5 locus also includes *H19*, which is separated from *IGF2* by about 80 kb (Figure 2). In both humans and mice, *IGF2* and *H19* are imprinted in a reciprocal manner. Moore et al. detected three *Igf2* antisense transcripts relative to P0 transcription, with no open reading frames, in mice [42]. The exact role of these transcripts is unclear, and it is unknown whether their co-expression with the sense transcript (which has yet to be demonstrated), within the same cell, would influence mRNA stability.

(A) Human *IGF2* gene (20 kb, minus strand)(B) Human *IGF2* transcripts

(C) Human IGF-II proteins

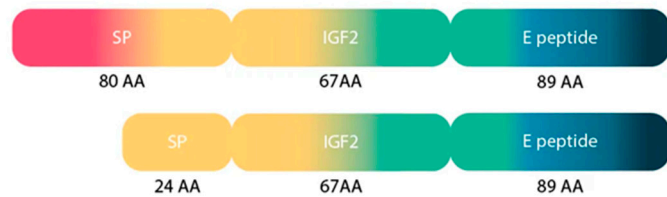


Figure 3. (A) Schematic representation of the structure of the *IGF2* gene in humans. The *IGF2* gene consists of 10 exons and is driven by five different promoters. The exons of the *IGF2* gene are boxed. The black boxes indicate non-coding exons. The colored boxes indicate the coding exons. The turned arrows show the promoters (P) and indicate the transcription start sites. The blue lines indicate the differentially methylated regions (DMR) in the *IGF2* gene. (B) Transcripts of the human *IGF2* gene. *IGF2* has six alternative transcripts, depending on promoters and splice sites used. (C) Human IGF-II proteins. IGF-II has two precursor proteins. Only exons 5, 8, 9 and 10 encode IGF-II proteins. Exon 5 is not included in the composition of the second precursor protein, which therefore has a smaller signal peptide. SP: signal peptide; AA: amino acids.

Different protein-binding sites are involved in regulating the expression of these two genes. The first evidence of differences in protein-binding sites and methylation status between the two alleles came from DNA hypersensitive site studies on the mouse *Igf2/H19* locus [43]. These studies revealed clear differences in nuclease sensitivity between the parental chromosomes, with the presence of mutually exclusive hypersensitive sites (on the maternal chromosome) and DNA methylation sites (on the paternal chromosome).

The specific parent-of-origin pattern of expression of *H19* and *IGF2* at 11p15.5 is controlled by the allele-specific methylation status of *H19/IGF2:IG-DMR*. This locus is composed of seven CTCF-binding sites (CBS1-7) located in the A and B blocks of repeated domains (Figure 2). CTCF is a highly conserved zinc-finger DNA-binding protein with multiple roles in gene regulation [44]. The region orthologous to ICR1 in mouse contains only four CBS at the *Igf2* locus. Several studies in humans have reported methylation at all CBS in *H19/IGF2:IG-DMR* on the paternal allele and established a correlation between the methylation of these CBS and *IGF2* expression from the paternal allele [45]. Our team has also demonstrated homogeneous methylation levels for all CBS in humans [46]. In mice, CTCF binding to the unmethylated maternal ICR is essential for imprint maintenance in somatic cells, providing protection against aberrant de novo methylation at DMR throughout the locus. Furthermore, CTCF acts as an insulator, and CTCF binding creates a small loop of silent chromatin (CTCF binding to the maternal ICR regulates its interaction with matrix attachment region (MAR)3 and DMR1 at *Igf2*) (Figure 4), preventing enhancers

from gaining access to the *Igf2* promoter [47]. *H19/IGF2:IG-DMR* methylation on the paternal allele abolishes CTCF binding and ICR-mediated insulation, resulting in functional communication between promoters and enhancers, and an activation of *Igf2* expression (see below).

In addition to CBS, the human *IGF2/H19* domain contains four binding sites for the pluripotency factors OCT4 and SOX2 [48]. There is evidence to suggest that the function of CTCF is modulated by the binding of OCT4/SOX2 to neighboring areas of DNA [49]. These factors play a role in maintaining or establishing the unmethylated status of the maternal allele. This hypothesis is strongly supported by in vitro experiments and by studies in transgenic mouse models showing that the OCT4/SOX2 binding sites in the maternal *H19/IGF2:IG-DMR* are essential for the full protection of DNA methylation during the establishment or maintenance phases [50,51]. Indeed, in humans, mutations of these OCT4/SOX2 binding sites in the maternal allele lead to hypermethylation of the CBS, followed by an increase in *IGF2* expression leading to Beckwith–Wiedemann syndrome [52]. Two other factors, ZFP57 and ZNF445, protect ICR from DNA demethylation after fertilization. ZNF445 seems to be sufficient on its own in humans, whereas ZFP57 and ZNF445 cooperate in rodents (Figure 2) [53,54]. The *IGF2/H19* domain also contains several other DMR: three within the *IGF2* gene (DMR0, DMR1 and DMR2) and an additional DMR located in the *H19* promoter (*H19DMR*), all of which are secondary DMR (somatic DMR that acquire their parent-specific DNA methylation mark in somatic diploid cells) methylated on the paternal allele [55] (Figure 2).

2.2. Three-Dimensional Organization

The regulation of *IGF2* expression must be considered in three dimensions, with CTCF playing a major role in this aspect. There is experimental evidence to suggest that CTCF confers allele-specific effects on transcription via long-range chromatin interactions. The generation of these data was made possible by the emergence of 3C technology [56]. These interactions are dependent on the parental origin of the chromatin.

Series of deletions at the *H19/Igf2* locus have made it possible to demonstrate the presence of several enhancers, two of which are predominantly endodermal and located 10 kb from the start site of the *H19* transcript. These two enhancers target the *H19* and *Igf2* promoters, allowing expression of the corresponding genes (see below and Figures 2 and 4) [57]. For the maternal allele, for which *Igf2* expression is silent, 3C data are generally consistent with a model in which the CTCF-bound ICR contacts both the upstream DMR1 and a downstream matrix attachment region (MAR). Genetic studies have confirmed that CTCF binding to the ICR is required for both the formation of ICR-DMR1-MAR contacts and the prevention of maternal-specific enhancer-*Igf2* promoter interactions. By contrast, on the paternal allele, which displays active *Igf2* expression, all DMR sequences are methylated, preventing CTCF binding, and most of this region appears to be accessible, allowing more fluid contact with the enhancers [47,58].

Recent efforts to elucidate chromatin organization at the *Igf2/H19* mouse locus, based on a combination of studies of allelic CTCF binding with both high-resolution and single-cell 3D chromatin organization assays, defined topologically associated domains (TAD) [59]. These studies determined the dynamic structure of the imprinted *Igf2-H19* domain, and showed that CTCF binding occurred at multiple sites in both alleles, exclusively in ICR1 for the maternal. Furthermore, combinations of allelic 4C-seq and DNA-FISH revealed that CTCF binding to the paternal chromosome alone was correlated with a first level of sub-TAD structure. Additional CTCF binding to the differentially methylated region on the maternal chromosome adds a further layer of sub-TAD organization. This allele-specific sub-TAD organization may, thus, provide an instructive or permissive context for the correct activation of imprinted genes during development.

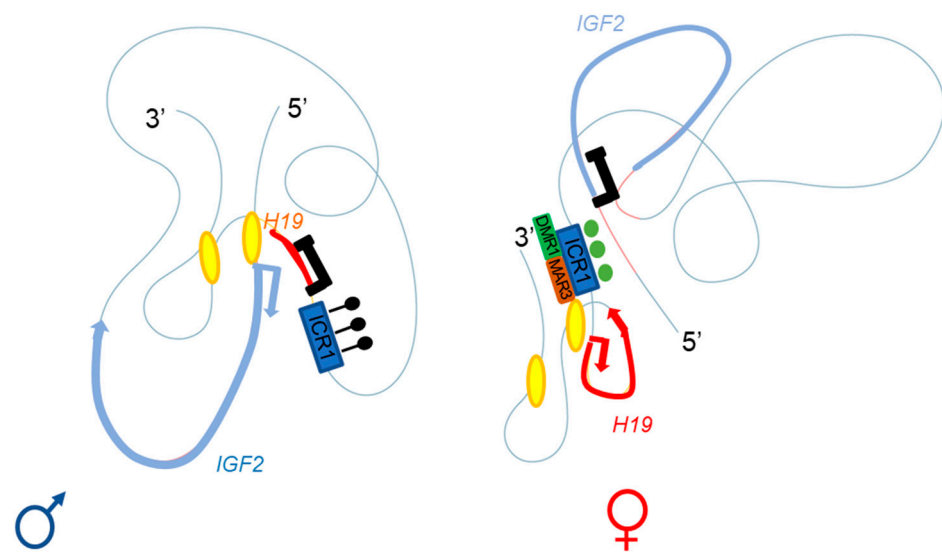


Figure 4. Adapted from Rovina et al. [60]. Three-dimensional representation of the *IGF2-H19* locus on the paternal (left) and maternal (right) chromosomes. The ICR1 of the paternal allele is methylated (black lollipop), with enhancers A and B (yellow ellipses) close to the *IGF2* promoter; this conformation allows *IGF2* expression and *H19* repression. The CTCF of the maternal allele can bind the unmethylated ICR1 (green circles), regulating the interaction with DMR1 (green box) and the matrix attachment region (MAR)3 (brown box); the A and B (yellow ellipses) enhancers are close to the *H19* promoter. This conformation allows *H19* expression and *IGF2* repression.

In humans, a specific parent-of-origin pattern of expression through TAD generation according to CTCF binding has been described, leading to *IGF2* expression or silencing [60]. As in mice, the most important proteins for TAD architecture are CTCF (which bind to the ICR) (Figure 4). Moreover, crosstalk between *IGF2/H19* and the *CDKN1C/KCNQ1OT1* domain (another imprinted domain located in the same chromosome region) has been detected on the basis of a higher order of chromatin folding, suggesting the involvement of a mechanism for coordinating the expression of genes with the same expression status: *IGF2* and *KCNQ1OT1* on the paternal allele and *H19* and *CDKN1C* on the maternal allele [60].

2.3. Trans-Regulation Mechanisms

In addition to being regulated by *H19/IGF2:IG-DMR* methylation and the three-dimensional organization of chromatin, *IGF2* can be directly regulated through the activation of its promoters by several transcription factors, including those of the oncogenic *HMGA2-PLAG1* pathway [61]. *PLAG1* (pleiomorphic adenoma gene 1) overexpression was first observed in pleiomorphic adenomas of the salivary glands, identifying *PLAG1* as an oncogene [62]. *PLAG1* is a nuclear factor with seven zinc-finger domains that can bind *IGF2* promoter P3, upregulating its transcriptional activity [62]. This finding has been confirmed in various other tumors, including hepatoblastomas, lipoblastomas and leukemia (review in [63]). Interestingly, *Plag1* inactivation in mouse models results in pre- and postnatal growth retardation, despite an absence of change in *Igf2* expression in embryos and pups [64].

HMGA2 (high mobility group AT-hook 2), initially named *HMGI-C*, is a member of the high-mobility group of proteins. Its expression is usually barely detectable in normal adult cells, but increases in cells transformed with viral oncogenes and in malignant tissues [65]. Mouse models of *Hmga2* inactivation have a pygmy phenotype, with pre- and postnatal growth restriction and craniofacial abnormalities (a shortened head) [66]. The expression levels of *HMGA2* and *PLAG1* are highly correlated in thyroid tumors, and *HMGA2* overexpression in cellular models is associated with an increase in *PLAG1* expression [67].

The role of this oncogenic pathway in the control of *IGF2* expression was highlighted in 2017, with the identification of additional mutations of *HMGA2* and the first mutations of *PLAG1* in patients referred for Silver–Russell syndrome (in addition to original mutations of *IGF2*). One of these *PLAG1* mutations led to a downregulation of *IGF2* expression in fibroblasts through a specific change in P3 promoter activity. Finally, the overexpression of *HMGA2* and *PLAG1* or their silencing in transfection assays result in a gain in expression or the downregulation of *IGF2* expression, respectively [61].

DIS3L2 (*DIS3-like 3'-5' exoribonuclease 2*) encodes a protein involved in the processing of mRNA and small non-coding RNAs. Homozygous loss-of-function variants of *DIS3L2* lead to a rare condition called Perlman syndrome. This syndrome is characterized by excessive fetal growth and an increase in the risk of Wilms' tumor [68]. In a mouse model, *Dis3l2* invalidation was associated with an overexpression of *Igf2* in nephron progenitor cells that was not associated with a loss of imprinting, as *Igf2* still displayed monoallelic expression. The mechanism of *Igf2* overexpression in this model remains to be determined [69].

Network of imprinted genes: In recent years, several studies in humans or animal models have shown that abnormalities at a given imprinted locus can impact at the expression of genes not only at the locus concerned, but also at other imprinted or non-imprinted loci [70–73]. This finding raised the possibility of an imprinted gene network, within which, imprinted genes are co-regulated. This pattern of regulation may partly account for the clinical overlap between imprinting disorders due to (epi)genetic defects at different imprinted loci [74]. For example, a strong clinical overlap between Silver–Russell syndrome (SRS, OMIM #180860) and Temple syndrome (TS14, OMIM #616222) has been described, despite the existence of several syndrome-specific traits, including pre- and postnatal growth restriction, relative macrocephaly, feeding difficulties and a protruding forehead [75]. *IGF2* downregulation is thought to be the molecular mechanism underlying the SRS phenotype, with about 40% of SRS patients presenting hypomethylation at the *H19/IGF2:IG-DMR* [76]. TS14 is mostly due to abnormalities of the imprinted 14q32.2 locus. This locus contains non-coding RNA sequences that are expressed from the maternal allele only (including the two long non-coding RNA, *MEG3* and *MEG8*). In cases of maternal uniparental disomy of chromosome 14 or hypomethylation at the *MEG3/DLK1:IG-DMR*, *MEG3* and *MEG8* are expressed from both the paternal and maternal alleles, leading to an increase in the level of expression of these two genes. Abnormally low levels of *IGF2* expression have been reported in the fibroblasts of TS14 patients, despite normal *H19/IGF2:IG-DMR* methylation. Furthermore, in control fibroblasts, the overexpression of *MEG3* and *MEG8* leads to a downregulation of *IGF2*. Conversely, the silencing of *MEG3* and/or *MEG8* in control fibroblasts leads to an upregulation of *IGF2* expression. Thus, *MEG3* and *MEG8*, which are expressed from the maternal 14q32.2 locus, regulates *IGF2* expression at 11p15.5, providing support for the hypothesis of an imprinted gene network [77].

3. Physiological Roles

3.1. IGF-II: A Key Factor in Development

IGF-II is a growth factor with a structural and regulatory complexity associated with pleiotropic tissue-specific and developmental-stage-dependent action (Figure 5).

Paternally expressed imprinted genes are usually associated with a pro-proliferative role during development. This is particularly true for the *IGF2* gene, which encodes a key factor for fetoplacental growth [78]. Indeed, IGF-II is highly mitogenic, and together with IGF-I, it promotes the proliferation of various types of cells during the fetal period, thereby playing a major role in organ growth and development.

In mice, the *Igf2* gene plays a crucial role during the embryonic period. The P0 promoter operates specifically in the placenta, leading to extremely high levels of *Igf2* expression in placental tissues during gestation. The complete inactivation of *Igf2* (*Igf2* null^{+mat/-pat}), and specific inactivation of the placental transcript *Igf2*-P0 (*Igf2* P0^{+mat/-pat}) have been studied experimentally in mice. *Igf2*-null mice display intrauterine growth restriction and placental hypoplasia. Furthermore, the specific inactivation of *Igf2*-P0 leads to intrauterine

growth restriction through placental restriction [36,79]. These mouse models also present changes to feto-maternal exchanges, including, in particular, the supply of maternal nutrients to the fetus [1,80]. These alterations can be explained by the role of the *Igf2*/*Igf2R* axis in placental vascularization and the adaptation of the placenta to fetal needs [81].

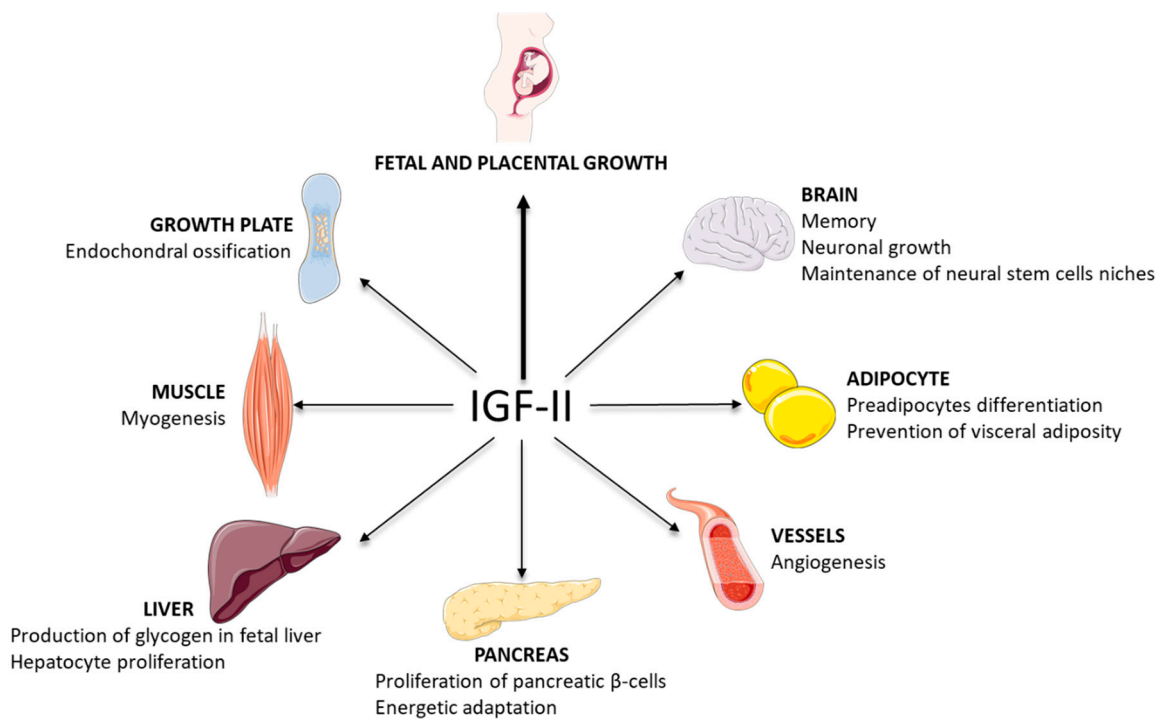


Figure 5. Diagram summarizing the physiological roles of IGF-II described in humans and mouse models.

However, there are important differences between humans and mice, particularly in the placenta. For example, the human placenta is monochorial, with interanvil spaces, whereas the mouse placenta is trichorial and has a labyrinth region. Moreover, the human placenta is associated with some extremely specific molecular patterns, such as the expression of certain genes (*miR-194*, *C19orf33*, *SIGLEC6*, *estrogens*, *glycodelin A*, *chorionic gonadotropins*, etc.) [82,83]. Furthermore, in humans, *IGF2*-P0 is not specific to the placenta and is expressed in other tissues, including skeletal muscle. There is no clear evidence to suggest that the mouse model is strictly comparable to humans, so it remains unclear whether the same placental dysfunctions occur in mice and humans [55,84]. Data obtained from human placenta explants and the human BeWo cell (a choriocarcinoma cell line) model suggest that abnormalities in the functioning of the IGF system, including *IGF2R* impairment, in particular, would lead to an imbalance between proliferation and apoptosis in trophoblasts [85]. In addition, patients with SRS (i.e., with low levels of *IGF2* expression, see below) display hypoplasia of the placenta and chorionic villi. Moreover, this hypoplasia is commonly associated with oligohydramnios, consistent with placental dysfunction in this syndrome [84]. By contrast, a study on patients with Beckwith–Wiedemann syndrome (BWS, #130650, see below) with various molecular etiologies showed that most individuals with BWS, which is caused by *IGF2* overexpression, displayed placentomegaly [86,87]. These studies clearly show that deregulations of the *IGF2* and IGF system can cause changes to placental structure and function in humans [85]. *IGF2* is also highly expressed in fetal tissues, under the control of various promoters, depending on the tissue concerned, and is involved in the maturation and development of mesoderm-derived tissues, in particular [88–91].

In mice, *Igf2* expression decreases rapidly in all tissues after birth, potentially accounting for the intrauterine growth phenotype but minimal effects on postnatal growth in *Igf2*-null mice [36,92]. However, *Igf2* expression is maintained in the brain, particularly in

the hippocampus, where it plays a role in memory processes, learning and brain plasticity [18,93,94]. This postnatal expression of *Igf2* is also involved in homeostasis of stem cell niches in brain and intestine [95].

In humans, serum IGF-II concentration remains high (400–1000 ng/mL) during the postnatal period, despite the significant decrease in *IGF2* expression observed in tissues. The exact physiological role of this circulating IGF-II and the absence of interference with the GH-IGF-I regulation, despite the fact that IGF-I and IGF-II have fairly similar affinities for IGF1R remains to be elucidated.

The IGF-II in serum is produced by the liver under the control of the P1 promoter and released into the bloodstream. The difference in postnatal *IGF2* expression between humans and mice is thought to be due to the presence of the *IGF2* P1 promoter in humans, and its absence in mice [96]. During the postnatal period, the P3 and P4 promoters are responsible for *IGF2* expression in most tissues [34,89,96]. Interestingly, the P1 promoter is not imprinted (*IGF2*-P1 expression is, therefore, biallelic) and has been reported to be liver-specific, although doubts have been raised about this specificity following the demonstration that cells in other tissues, such as chondrocytes, express the *IGF2*-P1 transcript [34,96–98]. *IGF2* displays monoallelic expression in the fetal liver, and is dependent mainly on the P3 and P4 imprinted promoters.

3.2. Some Roles of IGF-II in Tissues

The other roles of IGF-II in tissues, apart from those cell proliferation and organ growth, remain unclear. Many studies have sought to elucidate the role of IGF-II in the development, maintenance and function of various tissues. Loss- or gain-of-function models (mice or cellular models) have been developed to shed light on the mechanism of action of IGF-II.

Several studies in mice have shown that Igf-II is involved in endochondral ossification within the growth plate, which governs bone growth. Autocrine Igf-II in the growth plate activates the PI3K/Akt and TGF- β signaling pathways, leading to the expression of proliferative factors that stimulate chondrocyte proliferation, pro-osteogenic factors, such as BMP-9 and alkaline phosphatase, which mediate ossification, and constituents of cartilage, such as proteoglycans. Igf-II has also been implicated in partial regulation of the development and organization of the growth plate, through the regulation of glucose metabolism [99–101].

Other studies have revealed the role of IGF-II in angiogenesis. Igf-II promotes the mesodermal, and then endothelial differentiation of mouse embryonic stem cells. In HUVEC cells, IGF-II activates sprouting, leading to the activation of endothelial cells and vasodilation. IGF-II and IGF-1R are essential for the maintenance of tip cells, a particular type of endothelial cell responsible for guiding de novo angiogenesis. The binding of IGF-II to IGF1-R activates the PI3K/Akt signaling pathway, switching on the cell migration programs necessary for angiogenesis. IGF-binding proteins, such as IGFBP-3 and IGFBP-4, modulate the bioavailability of IGF-II, which regulates the effect of IGF-II on sprouting angiogenesis. IGF-II is also involved in angiogenesis through its role in maintaining hypoxia-induced factor α (*HIF- α*) levels, leading to expression of the vascular endothelial growth factor (*VEGF*) gene [102–104].

In human adipose tissue, IGF-II induces the differentiation of subcutaneous preadipocytes and inhibits the differentiation of visceral preadipocytes. IGF-II also down-regulates the insulin receptor IR-A and expression of the glucose transporter GLUT4 in visceral adipocytes, thereby preventing the development of adiposity in visceral compartments [105].

In mouse fetal liver, Igf-II regulates glycogen production. Igf-II binds type A INSR, which activates the PI3K/Akt pathway, leading to the phosphorylation of glycogen synthase, which catalyzes the production of glycogen in fetal liver [106]. Igf-II is also involved in hepatocyte proliferation in mice [107].

Some studies on mouse models have postulated a role for Igf-II in the regulation of pancreatic size and function. Indeed, Igf-II synthesized in the pancreatic mesenchyme exerts a paracrine effect on the proliferation of pancreatic β -cells and, thus, on the size and function of the exocrine pancreas during the pre- and postnatal periods. By contrast, the autocrine Igf-II produced by pancreatic β -cells plays a role in adaptation to energy demands in pregnant mice [108–110].

One of the best-known and most-studied roles of IGF-II is that in myogenesis. IGF-II plays a direct role in the differentiation of mesoderm into myoblasts by upregulating the expression of MyoD, a key factor determining musculoskeletal fate. It also acts on striated skeletal muscle homeostasis and, thus, on the maturation, maintenance and healing of such muscles. In skeletal muscle, *IGF2* transcription depends on the P3 promoter and the mTOR protein. IGF-II acts by binding to the IGF-1R, thereby triggering the PI3K/Akt signaling cascade required for the differentiation of mesenchymal stem cells into musculoskeletal cells [111–113]. Several microRNAs, such as miR-223 and miR-125b, play a role in skeletal muscle homeostasis by modifying *IGF2* expression and, thus, its action on myoblast proliferation and differentiation [114,115].

The role of IGF-II in the brain remains to be clearly defined in humans, but studies on rodent models have shown that Igf-II makes a major contribution to the correct functioning of the brain. Igf-II is the most abundant Igf in the adult rodent central nervous system, with particularly high levels in the hippocampus. Moreover, Igf-2R is expressed in almost all regions of the brain, including the hippocampus, olfactory bulb, dentate gyrus, choroid plexus, and the cerebral vascular system. Thus, by regulating Igf-II bioavailability, Igf-2R controls not only neuronal growth and differentiation, but also the mechanisms of neuronal regeneration. Moreover, Igf-I and Igf-II control neuronal survival by inhibiting apoptosis [116]. Studies in mouse models have also revealed a role for Igf-II in the maintenance of adult neural stem-cell niches. Thus, *Igf2* deletion results in the differentiation of neural stem cells into neurons, leading to hyposmia, due to an increase in the number of neurons in the olfactory bulb, together with cognitive deficits and increased anxiety [95].

Studies in rats have shown that Igf-II is involved in hippocampus-dependent learning mechanisms. Indeed, Igf-II plays an important role in the consolidation of memory, the retention of information and the prevention of forgetfulness phenomena. These effects are mediated by the *Igf2* receptor and lead an increase in the expression of the AMPA receptor subunit GluA1 (ionotropic receptor for glutamate heavily involved in synaptic plasticity) at the synapses, and to activation of the glycogen synthase kinase 3- β enzyme [17,18]. These phenomena participate in the long-term potentiation (LTP) responsible for memory consolidation.

Conversely, several studies in mice have suggested that the deregulation of *Igf2* expression may contribute to certain mental illnesses, leading to the hypothesis of a link between decreases in hippocampal Igf-II levels and increases in anxious and depressive behaviors [117,118]. In humans (post-mortem analysis), *IGF2* downregulation in the prefrontal cortex is associated with schizophrenic disorders [119–121]. Studies on mice and cell models derived from mice have shown that the misregulation of *Igf2* is associated with autistic behavior and neurodegenerative diseases, such as Huntington's disease and Charcot's disease. In these two neurodegenerative diseases, *Igf2* stimulation has a positive effect by preventing the degeneration of motor neurons and promoting their regeneration [122–124]. In autistic disorders, *Igf2* stimulation leads to a reversal of the clinical signs of autism (restoration of social behavior, abolition of repetitive behaviors, etc.) [125]. Few cognitive studies have been performed in SRS patients with low levels of *IGF2* expression, and one study showed that SRS patients did not actually present cognitive deficits relative to a control population, but that they had a smaller frontal and parietal lobe volume in the brain [126].

4. Pathological Aspects

4.1. Silver–Russell Syndrome (SRS)

SRS is a well-recognized imprinting disorder including prenatal and postnatal growth retardation. Clinical diagnosis is currently based on a combination of the characteristic features evaluated with a clinical scoring system (Netchine–Harbison Clinical Scoring System, NHCSS) [127]. Relative macrocephaly at birth is a key criterion for diagnosis and exposes the patient to a high risk of hypoglycemia, which should be carefully monitored. The first international consensus conference on SRS was held in 2015 [76]. A molecular abnormality can be identified in about 60% of patients with a positive clinical diagnosis of SRS (NHCSS > 3). The main molecular causes are low levels of *IGF2* expression, due to a loss of methylation of the distal imprinting control region (*H19/IGF2:IG-DMR*) on 11p15.5 (50%), other rare 11p15.5-related molecular defects, such as *IGF2* point mutations affecting the paternal allele, mutations or deletions of *HMGA2* and *PLAG1*, or gain-of-function mutations of *CDKN1C* [61,128–132]. However, after birth, serum IGF-II levels are within the normal range. Indeed, the IGF-II in the serum, which is principally of hepatic origin, results from biallelic *IGF2* expression regulated by the P1 promoter. However, as pointed out above, *IGF2* remains imprinted and its expression in other tissues is monoallelic and regulated by the P3 and P4 promoters [130].

SRS patients require multidisciplinary care, as they have many different health issues, including growth failure, severe feeding difficulties in early childhood, gastrointestinal problems, hypoglycemia, puberty and reproductive disturbances, motor and speech delay, sleep apnea and psychosocial challenges [76]. They have also been reported to experience metabolic disturbances in early adulthood, illustrating Barker’s developmental origin of health and diseases theory, according to which, fetal growth retardation triggers long-term health issues [133–135], and suggesting that low levels of *IGF2* expression during fetal development may have long-term consequences for key physiological processes.

4.2. Temple Syndrome (TS14)

The phenotypes of TS14 and SRS overlap [75,136,137]. TS14 is characterized by pre- and postnatal growth failure, albeit not as severe as in SRS. Fetal growth restriction may be present in up to 75% of cases, a frequency similar to that in SRS. About 50% of TS14 patients have relative macrocephaly at birth. Severe neonatal-onset hypotonia is a prominent feature. Early obesity and precocious puberty onset are typical (86%), often requiring treatment with gonadotropin-releasing hormone analogs [75]. The molecular abnormalities underlying TS14 include hypomethylation of the *MEG3/DLK1:IG-DMR* in the human 14q32.2 imprinted region. As pointed out above, the downregulation of *IGF2* expression in the fibroblasts of TS14 patients may account for the clinical overlap between TS14 and SRS [77].

4.3. Wilms’ Tumors and Beckwith–Wiedemann Syndrome

It has been known for decades that *IGF2* is overexpressed in Wilms’ tumors relative to normal postnatal kidney [138]. A loss of heterozygosity (i.e., loss of the maternal allele) or loss of imprinting at the *H19/IGF2:IG-DMR* (i.e., biallelic expression of *IGF2*) in Wilms’ tumors was subsequently demonstrated by several teams [139,140]. Finally, in 1995, Taniguchi et al. showed that the loss of *IGF2* imprinting in Wilms’ tumors was associated with hypermethylation at the *H19/IGF2:IG-DMR*, as reported in patients with BWS [141].

Beckwith–Wiedemann syndrome is an overgrowth syndrome. The patients often present with macroglossia, abdominal wall defects, hemihyperplasia, enlarged abdominal organs, and a high risk of embryonal tumors (especially Wilms’ tumors) during early childhood. BWS is mostly due to genetic or epigenetic defects in the 11p15.5 region. The first consensus statement on BWS was released in 2016 [142]. Various molecular defects were identified, including mosaic segmental paternal uniparental isodisomy of 11p15.5 (commonly referred to as segmental upd(11)pat), which can be detected in 20% of patients, and gain of methylation (GOM) at the maternal *H19/IGF2:IG-DMR* allele, which is present in 5–10% of cases. Both lead to *IGF2* overexpression during fetal life. In addition to molecular

abnormalities of the *IGF2* locus, abnormalities of the *CDKN1C* locus (i.e., hypomethylation of the *KCNQ1OT1*:TSS-DMR or maternal loss-of-function mutations of the *CDKN1C* gene) account for about 75% of the molecular defects. Interestingly, tumor risk is highly correlated with the involvement of the *H19/IGF2* locus, as patients with *H19/IGF2*:IG-DMR GOM or with *upd(11)pat* have tumor risks of 28% and 16%, respectively, whereas patients with *KCNQ1OT1*:TSS-DMR LOM have a much lower prevalence of tumors, at 2.6% [143]. *IGF2* overexpression, as observed in BWS, is thus responsible for macrosomia, organomegaly and an increase in the risk of embryonal tumors.

5. Conclusions

IGF2 belongs to an imprinted gene network. Its expression is regulated by several upstream factors, and it regulates numerous downstream effectors. The application of new high-throughput technologies (i.e., next-generation sequencing, evaluations of DNA methylation and RNA sequencing) to imprinted disorders in mice or induced pluripotent stem cells and promising dental pluripotent stem cells models should make it possible to decipher more precisely the upstream and downstream actors involved in multiple tissue-specific functions of IGF-II [144,145]. The potential breakthroughs associated with such modeling of *IGF2*-linked diseases open up new challenges and expand this field of research still further.

Author Contributions: Writing—original draft preparation, C.S., F.B., E.G., M.-L.S., I.N.; Writing—review and editing, C.S., F.B., E.G., M.-L.S., I.N.; visualization, C.S., F.B., E.G., M.-L.S., I.N.; supervision, E.G., F.B., M.-L.S., I.N.; project administration, M.-L.S., I.N. All authors have read and agreed to the published version of the manuscript.

Funding: This work was supported by the ANR-18CE12-022.

Institutional Review Board Statement: Not applicable.

Informed Consent Statement: Not applicable.

Data Availability Statement: Not applicable.

Conflicts of Interest: There is no conflict of interest to disclose related with this work for any of the authors.

Nomenclature

IGF-II (IGF-I, IGF-1R, etc.) is used for the protein in humans, and *Igf*-II (*Igf*-I, *Igf*1r, etc.) is used in other species. *IGF2* (*IGF1*, *IGF1R*, etc.) is used for the gene in humans, and *Igf2* (*Igf1*, *Igf1r*, etc.) is used in other species.

References

1. Constância, M.; Hemberger, M.; Hughes, J.; Dean, W.; Ferguson-Smith, A.; Fundele, R.; Stewart, F.; Kelsey, G.; Fowden, A.; Sibley, C.; et al. Placental-Specific IGF-II Is a Major Modulator of Placental and Fetal Growth. *Nature* **2002**, *417*, 945–948. [[CrossRef](#)] [[PubMed](#)]
2. Giabicani, E.; Chantot-Bastarud, S.; Bonnard, A.; Rachid, M.; Whalen, S.; Netchine, I.; Brioude, F. Roles of Type 1 Insulin-Like Growth Factor (IGF) Receptor and IGF-II in Growth Regulation: Evidence from a Patient Carrying Both an 11p Paternal Duplication and 15q Deletion. *Front. Endocrinol.* **2019**, *10*, 263. [[CrossRef](#)] [[PubMed](#)]
3. Yu, H.; Berkel, H. Insulin-like Growth Factors and Cancer. *J. State Med. Soc.* **1999**, *151*, 218–223.
4. Hakuno, F.; Takahashi, S.-I. IGF1 Receptor Signaling Pathways. *J. Mol. Endocrinol.* **2018**, *61*, T69–T86. [[CrossRef](#)]
5. Bergman, D.; Halje, M.; Nordin, M.; Engström, W. Insulin-Like Growth Factor 2 in Development and Disease: A Mini-Review. *Gerontology* **2013**, *59*, 240–249. [[CrossRef](#)]
6. Chao, W.; D’Amore, P.A. IGF2: Epigenetic Regulation and Role in Development and Disease. *Cytokine Growth Factor Rev.* **2008**, *19*, 111–120. [[CrossRef](#)]
7. Henderson, S.T.; Brierley, G.V.; Surinya, K.H.; Priebe, I.K.; Catcheside, D.E.A.; Wallace, J.C.; Forbes, B.E.; Cosgrove, L.J. Delineation of the IGF-II C Domain Elements Involved in Binding and Activation of the IR-A, IR-B and IGF-IR. *Growth Horm. IGF Res.* **2015**, *25*, 20–27. [[CrossRef](#)]

8. LeRoith, D.; Werner, H.; Beitner-Johnson, D.; Roberts, C.T. Molecular and Cellular Aspects of the Insulin-like Growth Factor I Receptor. *Endocr. Rev.* **1995**, *16*, 143–163. [[CrossRef](#)]
9. Frasca, F.; Pandini, G.; Scalia, P.; Sciacca, L.; Mineo, R.; Costantino, A.; Goldfine, I.D.; Belfiore, A.; Vigneri, R. Insulin Receptor Isoform A, a Newly Recognized, High-Affinity Insulin-like Growth Factor II Receptor in Fetal and Cancer Cells. *Mol. Cell. Biol.* **1999**, *19*, 3278–3288. [[CrossRef](#)]
10. Andersen, M.; Nørgaard-Pedersen, D.; Brandt, J.; Pettersson, I.; Slaaby, R. IGF1 and IGF2 Specificities to the Two Insulin Receptor Isoforms Are Determined by Insulin Receptor Amino Acid 718. *PLoS ONE* **2017**, *12*, e0178885. [[CrossRef](#)]
11. Tong, P.Y.; Tollefsen, S.E.; Kornfeld, S. The Cation-Independent Mannose 6-Phosphate Receptor Binds Insulin-like Growth Factor II. *J. Biol. Chem.* **1988**, *263*, 2585–2588. [[CrossRef](#)]
12. Brown, J.; Delaine, C.; Zaccheo, O.J.; Siebold, C.; Gilbert, R.J.; van Boxel, G.; Denley, A.; Wallace, J.C.; Hassan, A.B.; Forbes, B.E.; et al. Structure and Functional Analysis of the IGF-II/IGF2R Interaction. *EMBO J.* **2008**, *27*, 265–276. [[CrossRef](#)] [[PubMed](#)]
13. Morgan, D.O.; Edman, J.C.; Standring, D.N.; Fried, V.A.; Smith, M.C.; Roth, R.A.; Rutter, W.J. Insulin-like Growth Factor II Receptor as a Multifunctional Binding Protein. *Nature* **1987**, *329*, 301–307. [[CrossRef](#)] [[PubMed](#)]
14. Clemmons, D.R. Structural and Functional Analysis of Insulin-like Growth Factors. *Br. Med. Bull.* **1989**, *45*, 465–480. [[CrossRef](#)] [[PubMed](#)]
15. Oka, Y.; Rozek, L.M.; Czech, M.P. Direct Demonstration of Rapid Insulin-like Growth Factor II Receptor Internalization and Recycling in Rat Adipocytes. Insulin Stimulates 125I-Insulin-like Growth Factor II Degradation by Modulating the IGF-II Receptor Recycling Process. *J. Biol. Chem.* **1985**, *260*, 9435–9442. [[CrossRef](#)]
16. Yu, X.-W.; Pandey, K.; Katzman, A.C.; Alberini, C.M. A Role for CIM6P/IGF2 Receptor in Memory Consolidation and Enhancement. *eLife* **2020**, *9*, e54781. [[CrossRef](#)]
17. Stern, S.A.; Chen, D.Y.; Alberini, C.M. The Effect of Insulin and Insulin-like Growth Factors on Hippocampus- and Amygdala-Dependent Long-Term Memory Formation. *Learn. Mem.* **2014**, *21*, 556–563. [[CrossRef](#)]
18. Chen, D.Y.; Stern, S.A.; Garcia-Osta, A.; Saunier-Rebori, B.; Pollonini, G.; Bambah-Mukku, D.; Blitzer, R.D.; Alberini, C.M. A Critical Role for IGF-II in Memory Consolidation and Enhancement. *Nature* **2011**, *469*, 491–497. [[CrossRef](#)]
19. Oh, Y.; Müller, H.L.; Lee, D.Y.; Fielder, P.J.; Rosenfeld, R.G. Characterization of the Affinities of Insulin-like Growth Factor (IGF)-Binding Proteins 1-4 for IGF-I, IGF-II, IGF-I/Insulin Hybrid, and IGF-I Analogs. *Endocrinology* **1993**, *132*, 1337–1344. [[CrossRef](#)]
20. Jones, J.L.; Clemmons, D.R. Insulin-like Growth Factors and Their Binding Proteins: Biological Actions. *Endocr. Rev.* **1995**, *16*, 3–34. [[CrossRef](#)]
21. Clemmons, D.R. Role of IGF-Binding Proteins in Regulating IGF Responses to Changes in Metabolism. *J. Mol. Endocrinol.* **2018**, *61*, T139–T169. [[CrossRef](#)] [[PubMed](#)]
22. Forbes, B.E.; McCarthy, P.; Norton, R.S. Insulin-Like Growth Factor Binding Proteins: A Structural Perspective. *Front. Endocrin.* **2012**, *3*, 38. [[CrossRef](#)] [[PubMed](#)]
23. Bach, L.A. 40 Years of IGF1: IGF-Binding Proteins. *J. Mol. Endocrinol.* **2018**, *61*, T11–T28. [[CrossRef](#)] [[PubMed](#)]
24. Baxter, R.C. Characterization of the Acid-Labile Subunit of the Growth Hormone-Dependent Insulin-like Growth Factor Binding Protein Complex. *J. Clin. Endocrinol. Metab.* **1988**, *67*, 265–272. [[CrossRef](#)] [[PubMed](#)]
25. Frystyk, J.; Teran, E.; Gude, M.F.; Bjerre, M.; Hjortebjerg, R. Pregnancy-Associated Plasma Proteins and Stanniocalcin-2—Novel Players Controlling IGF-I Physiology. *Growth Horm. IGF Res.* **2020**, *53–54*, 101330. [[CrossRef](#)] [[PubMed](#)]
26. Firth, S.M.; Baxter, R.C. Cellular Actions of the Insulin-Like Growth Factor Binding Proteins. *Endocr. Rev.* **2002**, *23*, 824–854. [[CrossRef](#)]
27. Blat, C.; Villaudy, J.; Binoux, M. In Vivo Proteolysis of Serum Insulin-like Growth Factor (IGF) Binding Protein-3 Results in Increased Availability of IGF to Target Cells. *J. Clin. Investig.* **1994**, *93*, 2286–2290. [[CrossRef](#)]
28. Lawrence, J.B.; Oxvig, C.; Overgaard, M.T.; Sottrup-Jensen, L.; Gleich, G.J.; Hays, L.G.; Yates, J.R.; Conover, C.A. The Insulin-like Growth Factor (IGF)-Dependent IGF Binding Protein-4 Protease Secreted by Human Fibroblasts Is Pregnancy-Associated Plasma Protein-A. *Proc. Natl. Acad. Sci. USA* **1999**, *96*, 3149–3153. [[CrossRef](#)]
29. Oxvig, C. The Role of PAPP-A in the IGF System: Location, Location, Location. *J. Cell Commun. Signal.* **2015**, *9*, 177–187. [[CrossRef](#)]
30. Barrios, V.; Chowen, J.A.; Martín-Rivada, Á.; Guerra-Cantera, S.; Pozo, J.; Yakar, S.; Rosenfeld, R.G.; Pérez-Jurado, L.A.; Suárez, J.; Argente, J. Pregnancy-Associated Plasma Protein (PAPP)-A2 in Physiology and Disease. *Cells* **2021**, *10*, 3576. [[CrossRef](#)]
31. Dauber, A.; Muñoz-Calvo, M.T.; Barrios, V.; Domené, H.M.; Kloverpris, S.; Serra-Juhé, C.; Desikan, V.; Pozo, J.; Muzumdar, R.; Martos-Moreno, G.Á.; et al. Mutations in Pregnancy-Associated Plasma Protein A2 Cause Short Stature Due to Low IGF-I Availability. *EMBO Mol. Med.* **2016**, *8*, 363–374. [[CrossRef](#)] [[PubMed](#)]
32. Han, V.K.; D’Ercole, A.J.; Lund, P.K. Cellular Localization of Somatomedin (Insulin-like Growth Factor) Messenger RNA in the Human Fetus. *Science* **1987**, *236*, 193–197. [[CrossRef](#)] [[PubMed](#)]
33. Sferruzzi-Perri, A.N.; Sandovici, I.; Constancia, M.; Fowden, A.L. Placental Phenotype and the Insulin-like Growth Factors: Resource Allocation to Fetal Growth. *J. Physiol.* **2017**, *595*, 5057–5093. [[CrossRef](#)] [[PubMed](#)]
34. Vu, T.H.; Hoffman, A.R. Promoter-Specific Imprinting of the Human Insulin-like Growth Factor-II Gene. *Nature* **1994**, *371*, 714–717. [[CrossRef](#)]

35. Toogood, A.A.; Jones, J.; O'Neill, P.A.; Thorner, M.O.; Shalet, S.M. The Diagnosis of Severe Growth Hormone Deficiency in Elderly Patients with Hypothalamic-Pituitary Disease: Diagnosis of GH Deficiency in the Elderly. *Clin. Endocrinol.* **1998**, *48*, 569–576. [[CrossRef](#)]
36. DeChiara, T.M.; Efstratiadis, A.; Robertsen, E.J. A Growth-Deficiency Phenotype in Heterozygous Mice Carrying an Insulin-like Growth Factor II Gene Disrupted by Targeting. *Nature* **1990**, *345*, 78–80. [[CrossRef](#)]
37. DeChiara, T.M.; Robertson, E.J.; Efstratiadis, A. Parental Imprinting of the Mouse Insulin-like Growth Factor II Gene. *Cell* **1991**, *64*, 849–859. [[CrossRef](#)]
38. Baral, K.; Rotwein, P. The Insulin-like Growth Factor 2 Gene in Mammals: Organizational Complexity within a Conserved Locus. *PLoS ONE* **2019**, *14*, e0219155. [[CrossRef](#)]
39. De Pagter-Holthuizen, P.; Jansen, M.; van Schaik, F.M.A.; van der Kammen, R.; Oosterwijk, C.; Van den Brande, J.L.; Sussenbach, J.S. The Human Insulin-like Growth Factor II Gene Contains Two Development-Specific Promoters. *FEBS Lett.* **1987**, *214*, 259–264. [[CrossRef](#)]
40. Zapf, J.; Futo, E.; Peter, M.; Froesch, E.R. Can “Big” Insulin-like Growth Factor II in Serum of Tumor Patients Account for the Development of Extrapaneatic Tumor Hypoglycemia? *J. Clin. Investig.* **1992**, *90*, 2574–2584. [[CrossRef](#)]
41. Rotwein, P. Large-Scale Analysis of Variation in the Insulin-like Growth Factor Family in Humans Reveals Rare Disease Links and Common Polymorphisms. *J. Biol. Chem.* **2017**, *292*, 9252–9261. [[CrossRef](#)] [[PubMed](#)]
42. Moore, T.; Constanca, M.; Zubair, M.; Bailleul, B.; Feil, R.; Sasaki, H.; Reik, W. Multiple Imprinted Sense and Antisense Transcripts, Differential Methylation and Tandem Repeats in a Putative Imprinting Control Region Upstream of Mouse *Igf2*. *Proc. Natl. Acad. Sci. USA* **1997**, *94*, 12509–12514. [[CrossRef](#)] [[PubMed](#)]
43. Khosla, S.; Aitchison, A.; Gregory, R.; Allen, N.D.; Feil, R. Parental Allele-Specific Chromatin Configuration in a Boundary-Imprinting-Control Element Upstream of the Mouse H19 Gene. *Mol. Cell. Biol.* **1999**, *19*, 2556–2566. [[CrossRef](#)] [[PubMed](#)]
44. Phillips, J.E.; Corces, V.G. CTCF: Master Weaver of the Genome. *Cell* **2009**, *137*, 1194–1211. [[CrossRef](#)]
45. Takai, D.; Gonzales, F.A.; Tsai, Y.C.; Thayer, M.J.; Jones, P.A. Large Scale Mapping of Methylcytosines in CTCF-Binding Sites in the Human H19 Promoter and Aberrant Hypomethylation in Human Bladder Cancer. *Hum. Mol. Genet.* **2001**, *10*, 2619–2626. [[CrossRef](#)]
46. Abi Habib, W.; Azzi, S.; Brioude, F.; Steunou, V.; Thibaud, N.; Das Neves, C.; Le Jule, M.; Chantot-Bastaraud, S.; Keren, B.; Lyonnet, S.; et al. Extensive Investigation of the *IGF2/H19* Imprinting Control Region Reveals Novel OCT4/SOX2 Binding Site Defects Associated with Specific Methylation Patterns in Beckwith-Wiedemann Syndrome. *Hum. Mol. Genet.* **2014**, *23*, 5763–5773. [[CrossRef](#)]
47. Kurukuti, S.; Tiwari, V.K.; Tavoosidana, G.; Pugacheva, E.; Murrell, A.; Zhao, Z.; Lobanenkova, V.; Reik, W.; Ohlsson, R. CTCF Binding at the H19 Imprinting Control Region Mediates Maternally Inherited Higher-Order Chromatin Conformation to Restrict Enhancer Access to *Igf2*. *Proc. Natl. Acad. Sci. USA* **2006**, *103*, 10684–10689. [[CrossRef](#)]
48. Demars, J.; Shmela, M.E.; Rossignol, S.; Okabe, J.; Netchine, I.; Azzi, S.; Cabrol, S.; Le Caignec, C.; David, A.; Le Bouc, Y.; et al. Analysis of the *IGF2/H19* Imprinting Control Region Uncovers New Genetic Defects, Including Mutations of OCT-Binding Sequences, in Patients with 11p15 Fetal Growth Disorders. *Hum. Mol. Genet.* **2010**, *19*, 803–814. [[CrossRef](#)]
49. Weth, O.; Renkawitz, R. CTCF Function Is Modulated by Neighboring DNA Binding Factors. *Biochem. Cell Biol.* **2011**, *89*, 459–468. [[CrossRef](#)]
50. Zimmerman, D.L.; Boddy, C.S.; Schoenherr, C.S. Oct4/Sox2 Binding Sites Contribute to Maintaining Hypomethylation of the Maternal *Igf2/H19* Imprinting Control Region. *PLoS ONE* **2013**, *8*, e81962. [[CrossRef](#)]
51. Sakaguchi, R.; Okamura, E.; Matsuzaki, H.; Fukamizu, A.; Tanimoto, K. Sox-Oct Motifs Contribute to Maintenance of the Unmethylated H19 ICR in YAC Transgenic Mice. *Hum. Mol. Genet.* **2013**, *22*, 4627–4637. [[CrossRef](#)] [[PubMed](#)]
52. Abi Habib, W.; Brioude, F.; Azzi, S.; Salem, J.; Das Neves, C.; Personnier, C.; Chantot-Bastaraud, S.; Keren, B.; Le Bouc, Y.; Harbison, M.D.; et al. 11p15 ICR1 Partial Deletions Associated with *IGF2/H19* DMR Hypomethylation and Silver-Russell Syndrome. *Hum. Mutat.* **2017**, *38*, 105–111. [[CrossRef](#)] [[PubMed](#)]
53. Quenneville, S.; Verde, G.; Corsinotti, A.; Kapopoulou, A.; Jakobsson, J.; Offner, S.; Baglivo, I.; Pedone, P.V.; Grimaldi, G.; Riccio, A.; et al. In Embryonic Stem Cells, ZFP57/KAP1 Recognize a Methylated Hexanucleotide to Affect Chromatin and DNA Methylation of Imprinting Control Regions. *Mol. Cell* **2011**, *44*, 361–372. [[CrossRef](#)] [[PubMed](#)]
54. Takahashi, N.; Coluccio, A.; Thorball, C.W.; Planet, E.; Shi, H.; Offner, S.; Turelli, P.; Imbeault, M.; Ferguson-Smith, A.C.; Trono, D. ZNF445 Is a Primary Regulator of Genomic Imprinting. *Genes Dev.* **2019**, *33*, 49–54. [[CrossRef](#)]
55. Monk, D.; Sanches, R.; Arnaud, P.; Apostolidou, S.; Hills, F.A.; Abu-Amero, S.; Murrell, A.; Friess, H.; Reik, W.; Stanier, P.; et al. Imprinting of *IGF2 P0* Transcript and Novel Alternatively Spliced *INS-IGF2* Isoforms Show Differences between Mouse and Human. *Hum. Mol. Genet.* **2006**, *15*, 1259–1269. [[CrossRef](#)]
56. Dekker, J.; Rippe, K.; Dekker, M.; Kleckner, N. Capturing Chromosome Conformation. *Science* **2002**, *295*, 1306–1311. [[CrossRef](#)]
57. Arney, K.L. H19 and *Igf2*—Enhancing the Confusion? *Trends Genet.* **2003**, *19*, 17–23. [[CrossRef](#)]
58. Yoon, Y.S.; Jeong, S.; Rong, Q.; Park, K.-Y.; Chung, J.H.; Pfeifer, K. Analysis of the H19ICR Insulator. *Mol. Cell. Biol.* **2007**, *27*, 3499–3510. [[CrossRef](#)]
59. Llères, D.; Moindrot, B.; Pathak, R.; Piras, V.; Matelot, M.; Pignard, B.; Marchand, A.; Poncelet, M.; Perrin, A.; Tellier, V.; et al. CTCF Modulates Allele-Specific Sub-TAD Organization and Imprinted Gene Activity at the Mouse *Dlk1-Dio3* and *Igf2-H19* Domains. *Genome Biol.* **2019**, *20*, 272. [[CrossRef](#)]

60. Rovina, D.; La Vecchia, M.; Cortesi, A.; Fontana, L.; Pesant, M.; Maitz, S.; Tabano, S.; Bodega, B.; Miozzo, M.; Sirchia, S.M. Profound Alterations of the Chromatin Architecture at Chromosome 11p15.5 in Cells from Beckwith-Wiedemann and Silver-Russell Syndromes Patients. *Sci. Rep.* **2020**, *10*, 8275. [[CrossRef](#)]
61. Abi Habib, W.; Brioude, F.; Edouard, T.; Bennett, J.T.; Lienhardt-Roussie, A.; Tixier, F.; Salem, J.; Yuen, T.; Azzi, S.; Le Bouc, Y.; et al. Genetic Disruption of the Oncogenic HMGA2-PLAG1-IGF2 Pathway Causes Fetal Growth Restriction. *Genet. Med.* **2018**, *20*, 250–258. [[CrossRef](#)] [[PubMed](#)]
62. Voz, M.L.; Agten, N.S.; Van de Ven, W.J.; Kas, K. PLAG1, the Main Translocation Target in Pleomorphic Adenoma of the Salivary Glands, Is a Positive Regulator of IGF-II. *Cancer Res.* **2000**, *60*, 106–113. [[PubMed](#)]
63. Van Dyck, F.; Declercq, J.; Braem, C.V.; Van de Ven, W.J.M. PLAG1, the Prototype of the PLAG Gene Family: Versatility in Tumour Development. *Int. J. Oncol.* **2007**, *30*, 765–774. [[CrossRef](#)] [[PubMed](#)]
64. Hensen, K.; Braem, C.; Declercq, J.; Van Dyck, F.; Dewerchin, M.; Fiette, L.; Deneff, C.; Van de Ven, W.J.M. Targeted Disruption of the Murine Plag1 Proto-Oncogene Causes Growth Retardation and Reduced Fertility. *Dev. Growth Differ.* **2004**, *46*, 459–470. [[CrossRef](#)]
65. Manfioletti, G.; Giancotti, V.; Bandiera, A.; Buratti, E.; Sautière, P.; Cary, P.; Crane-Robinson, C.; Coles, B.; Goodwin, G.H. CDNA Cloning of the HMGI-C Phosphoprotein, a Nuclear Protein Associated with Neoplastic and Undifferentiated Phenotypes. *Nucleic Acids Res.* **1991**, *19*, 6793–6797. [[CrossRef](#)]
66. Zhou, X.; Benson, K.F.; Ashar, H.R.; Chada, K. Mutation Responsible for the Mouse Pygmy Phenotype in the Developmentally Regulated Factor HMGI-C. *Nature* **1995**, *376*, 771–774. [[CrossRef](#)]
67. Klemke, M.; Müller, M.H.; Wosniok, W.; Markowski, D.N.; Nimzyk, R.; Helmke, B.M.; Bullerdiek, J. Correlated Expression of HMGA2 and PLAG1 in Thyroid Tumors, Uterine Leiomyomas and Experimental Models. *PLoS ONE* **2014**, *9*, e88126. [[CrossRef](#)]
68. Astuti, D.; Morris, M.R.; Cooper, W.N.; Staals, R.H.J.; Wake, N.C.; Fewes, G.A.; Gill, H.; Gentle, D.; Shuib, S.; Ricketts, C.J.; et al. Germline Mutations in DIS3L2 Cause the Perlman Syndrome of Overgrowth and Wilms Tumor Susceptibility. *Nat. Genet.* **2012**, *44*, 277–284. [[CrossRef](#)]
69. Hunter, R.W.; Liu, Y.; Manjunath, H.; Acharya, A.; Jones, B.T.; Zhang, H.; Chen, B.; Ramalingam, H.; Hammer, R.E.; Xie, Y.; et al. Loss of Dis3l2 Partially Phenocopies Perlman Syndrome in Mice and Results in Up-Regulation of Igf2 in Nephron Progenitor Cells. *Genes Dev.* **2018**, *32*, 903–908. [[CrossRef](#)]
70. Varrault, A.; Gueydan, C.; Delalbre, A.; Bellmann, A.; Houssami, S.; Aknin, C.; Severac, D.; Chotard, L.; Kahli, M.; Le Digarcher, A.; et al. Zac1 Regulates an Imprinted Gene Network Critically Involved in the Control of Embryonic Growth. *Dev. Cell* **2006**, *11*, 711–722. [[CrossRef](#)]
71. Gabory, A.; Ripoché, M.-A.; Le Digarcher, A.; Watrin, F.; Ziyat, A.; Forné, T.; Jammes, H.; Ainscough, J.F.X.; Surani, M.A.; Journot, L.; et al. H19 Acts as a Trans Regulator of the Imprinted Gene Network Controlling Growth in Mice. *Development* **2009**, *136*, 3413–3421. [[CrossRef](#)] [[PubMed](#)]
72. Al Adhami, H.; Evano, B.; Le Digarcher, A.; Gueydan, C.; Dubois, E.; Parrinello, H.; Dantec, C.; Bouschet, T.; Varrault, A.; Journot, L. A Systems-Level Approach to Parental Genomic Imprinting: The Imprinted Gene Network Includes Extracellular Matrix Genes and Regulates Cell Cycle Exit and Differentiation. *Genome Res.* **2015**, *25*, 353–367. [[CrossRef](#)] [[PubMed](#)]
73. Whipple, A.J.; Breton-Provencher, V.; Jacobs, H.N.; Chitta, U.K.; Sur, M.; Sharp, P.A. Imprinted Maternally Expressed MicroRNAs Antagonize Paternally Driven Gene Programs in Neurons. *Mol. Cell* **2020**, *78*, 85–95. [[CrossRef](#)] [[PubMed](#)]
74. Eggermann, T.; Davies, J.H.; Tauber, M.; van den Akker, E.; Hokken-Koelega, A.; Johansson, G.; Netchine, I. Growth Restriction and Genomic Imprinting-Overlapping Phenotypes Support the Concept of an Imprinting Network. *Genes* **2021**, *12*, 585. [[CrossRef](#)] [[PubMed](#)]
75. Geoffron, S.; Abi Habib, W.; Chantot-Bastarud, S.; Dubern, B.; Steunou, V.; Azzi, S.; Afenjar, A.; Busa, T.; Pinheiro Canton, A.; Chalouhi, C.; et al. Chromosome 14q32.2 Imprinted Region Disruption as an Alternative Molecular Diagnosis of Silver-Russell Syndrome. *J. Clin. Endocrinol. Metab.* **2018**, *103*, 2436–2446. [[CrossRef](#)]
76. Wakeling, E.L.; Brioude, F.; Lokulo-Sodipe, O.; O'Connell, S.M.; Salem, J.; Blied, J.; Canton, A.P.M.; Chrzanowska, K.H.; Davies, J.H.; Dias, R.P.; et al. Diagnosis and Management of Silver-Russell Syndrome: First International Consensus Statement. *Nat. Rev. Endocrinol.* **2017**, *13*, 105–124. [[CrossRef](#)]
77. Abi Habib, W.; Brioude, F.; Azzi, S.; Rossignol, S.; Linglart, A.; Sobrier, M.-L.; Giabicani, É.; Steunou, V.; Harbison, M.D.; Le Bouc, Y.; et al. Transcriptional Profiling at the DLK1/MEG3 Domain Explains Clinical Overlap between Imprinting Disorders. *Sci. Adv.* **2019**, *5*, eaau9425. [[CrossRef](#)]
78. Ishida, M.; Ohashi, S.; Kizaki, Y.; Naito, J.; Horiguchi, K.; Harigaya, T. Expression Profiling of Mouse Placental Lactogen II and Its Correlative Genes Using a cDNA Microarray Analysis in the Developmental Mouse Placenta. *J. Reprod. Dev.* **2007**, *53*, 69–76. [[CrossRef](#)]
79. Coan, P.M.; Fowden, A.L.; Constancia, M.; Ferguson-Smith, A.C.; Burton, G.J.; Sibley, C.P. Disproportional Effects of Igf2 Knockout on Placental Morphology and Diffusional Exchange Characteristics in the Mouse. *J. Physiol.* **2008**, *586*, 5023–5032. [[CrossRef](#)]
80. Sibley, C.P.; Coan, P.M.; Ferguson-Smith, A.C.; Dean, W.; Hughes, J.; Smith, P.; Reik, W.; Burton, G.J.; Fowden, A.L.; Constância, M. Placental-Specific Insulin-like Growth Factor 2 (Igf2) Regulates the Diffusional Exchange Characteristics of the Mouse Placenta. *Proc. Natl. Acad. Sci. USA* **2004**, *101*, 8204–8208. [[CrossRef](#)]

81. Sandovici, I.; Georgopoulou, A.; Pérez-García, V.; Hufnagel, A.; López-Tello, J.; Lam, B.Y.H.; Schiefer, S.N.; Gaudreau, C.; Santos, F.; Hoelle, K.; et al. The Imprinted Igf2-Igf2r Axis Is Critical for Matching Placental Microvasculature Expansion to Fetal Growth. *Dev. Cell* **2022**, *57*, 63–79. [[CrossRef](#)] [[PubMed](#)]
82. Schmidt, A.; Morales-Prieto, D.M.; Pastuschek, J.; Fröhlich, K.; Markert, U.R. Only Humans Have Human Placentas: Molecular Differences between Mice and Humans. *J. Reprod. Immunol.* **2015**, *108*, 65–71. [[CrossRef](#)] [[PubMed](#)]
83. Malassiné, A.; Frenzo, J.L.; Evain-Brion, D. A Comparison of Placental Development and Endocrine Functions between the Human and Mouse Model. *Hum. Reprod. Update* **2003**, *9*, 531–539. [[CrossRef](#)] [[PubMed](#)]
84. Yamazawa, K.; Kagami, M.; Nagai, T.; Kondoh, T.; Onigata, K.; Maeyama, K.; Hasegawa, T.; Hasegawa, Y.; Yamazaki, T.; Mizuno, S.; et al. Molecular and Clinical Findings and Their Correlations in Silver-Russell Syndrome: Implications for a Positive Role of IGF2 in Growth Determination and Differential Imprinting Regulation of the IGF2–H19 Domain in Bodies and Placentas. *J. Mol. Med.* **2008**, *86*, 1171–1181. [[CrossRef](#)]
85. Harris, L.K.; Crocker, I.P.; Baker, P.N.; Aplin, J.D.; Westwood, M. IGF2 Actions on Trophoblast in Human Placenta Are Regulated by the Insulin-like Growth Factor 2 Receptor, Which Can Function as Both a Signaling and Clearance Receptor. *Biol. Reprod.* **2011**, *84*, 440–446. [[CrossRef](#)] [[PubMed](#)]
86. Gaillot-Durand, L.; Brioude, F.; Beneteau, C.; Le Breton, F.; Massardier, J.; Michon, L.; Devouassoux-Shisheboran, M.; Allias, F. Placental Pathology in Beckwith-Wiedemann Syndrome According to Genotype/Epigenotype Subgroups. *Fetal Pediatr. Pathol.* **2018**, *37*, 387–399. [[CrossRef](#)]
87. Armes, J.E.; McGown, I.; Williams, M.; Broomfield, A.; Gough, K.; Lehane, F.; Lourie, R. The Placenta in Beckwith-Wiedemann Syndrome: Genotype-Phenotype Associations, Excessive Extravillous Trophoblast and Placental Mesenchymal Dysplasia. *Pathology* **2012**, *44*, 519–527. [[CrossRef](#)]
88. Morali, O.G.; Jouneau, A.; McLaughlin, K.J.; Thiery, J.P.; Larue, L. IGF-II Promotes Mesoderm Formation. *Dev. Biol.* **2000**, *227*, 133–145. [[CrossRef](#)]
89. Li, X.; Cui, H.; Sandstedt, B.; Nordlinger, H.; Larsson, E.; Ekström, T.J. Expression Levels of the Insulin-like Growth Factor-II Gene (IGF2) in the Human Liver: Developmental Relationships of the Four Promoters. *J. Endocrinol.* **1996**, *149*, 117–124. [[CrossRef](#)]
90. Barton, S.C.; Surani, M.A.; Norris, M.L. Role of Paternal and Maternal Genomes in Mouse Development. *Nature* **1984**, *311*, 374–376. [[CrossRef](#)]
91. McGrath, J.; Solter, D. Inability of Mouse Blastomere Nuclei Transferred to Enucleated Zygotes to Support Development in Vitro. *Science* **1984**, *226*, 1317–1319. [[CrossRef](#)] [[PubMed](#)]
92. Lui, J.C.; Baron, J. Evidence That Igf2 Down-Regulation in Postnatal Tissues and up-Regulation in Malignancies Is Driven by Transcription Factor E2f3. *Proc. Natl. Acad. Sci. USA* **2013**, *110*, 6181–6186. [[CrossRef](#)] [[PubMed](#)]
93. Pascual-Lucas, M.; Viana da Silva, S.; Di Scala, M.; Garcia-Barroso, C.; González-Aseguinolaza, G.; Mülle, C.; Alberini, C.M.; Cuadrado-Tejedor, M.; Garcia-Osta, A. Insulin-like Growth Factor 2 Reverses Memory and Synaptic Deficits in APP Transgenic Mice. *EMBO Mol. Med.* **2014**, *6*, 1246–1262. [[CrossRef](#)] [[PubMed](#)]
94. Schmeisser, M.J.; Baumann, B.; Johannsen, S.; Vindedal, G.F.; Jensen, V.; Hvalby, Ø.C.; Sprengel, R.; Seither, J.; Maqbool, A.; Magnutzki, A.; et al. IκB Kinase/Nuclear Factor KB-Dependent Insulin-like Growth Factor 2 (Igf2) Expression Regulates Synapse Formation and Spine Maturation via Igf2 Receptor Signaling. *J. Neurosci.* **2012**, *32*, 5688–5703. [[CrossRef](#)]
95. Ziegler, A.N.; Feng, Q.; Chidambaram, S.; Testai, J.M.; Kumari, E.; Rothbard, D.E.; Constancia, M.; Sandovici, I.; Cominski, T.; Pang, K.; et al. Insulin-like Growth Factor II: An Essential Adult Stem Cell Niche Constituent in Brain and Intestine. *Stem Cell Rep.* **2019**, *12*, 816–830. [[CrossRef](#)]
96. Rotwein, P. The Complex Genetics of Human Insulin-like Growth Factor 2 Are Not Reflected in Public Databases. *J. Biol. Chem.* **2018**, *293*, 4324–4333. [[CrossRef](#)]
97. van Dijk, M.A.; Holthuizen, P.E.; Sussenbach, J.S. Elements Required for Activation of the Major Promoter of the Human Insulin-like Growth Factor II Gene. *Mol. Cell. Endocrinol.* **1992**, *88*, 175–185. [[CrossRef](#)]
98. Jin, I.H.; Sinha, G.; Yballe, C.; Vu, T.H.; Hoffman, A.R. The Human Insulin-like Growth Factor-II Promoter P1 Is Not Restricted to Liver: Evidence for Expression of P1 in Other Tissues and for a Homologous Promoter in Baboon Liver. *Horm. Metab. Res.* **1995**, *27*, 447–449. [[CrossRef](#)]
99. Uchimura, T.; Hollander, J.M.; Nakamura, D.S.; Liu, Z.; Rosen, C.J.; Georgakoudi, I.; Zeng, L. An Essential Role for IGF2 in Cartilage Development and Glucose Metabolism during Postnatal Long Bone Growth. *Development* **2017**, *144*, 3533–3546. [[CrossRef](#)]
100. Chen, L.; Jiang, W.; Huang, J.; He, B.-C.; Zuo, G.-W.; Zhang, W.; Luo, Q.; Shi, Q.; Zhang, B.-Q.; Wagner, E.R.; et al. Insulin-like Growth Factor 2 (IGF-2) Potentiates BMP-9-Induced Osteogenic Differentiation and Bone Formation. *J. Bone Miner. Res.* **2010**, *25*, 2447–2459. [[CrossRef](#)]
101. Hamamura, K.; Zhang, P.; Yokota, H. IGF2-Driven PI3 Kinase and TGFbeta Signaling Pathways in Chondrogenesis. *Cell Biol. Int.* **2008**, *32*, 1238–1246. [[CrossRef](#)] [[PubMed](#)]
102. Pieciewicz, S.M.; Pandey, A.; Roy, B.; Xiang, S.H.; Zetter, B.R.; Sengupta, S. Insulin-like Growth Factors Promote Vasculogenesis in Embryonic Stem Cells. *PLoS ONE* **2012**, *7*, e32191. [[CrossRef](#)] [[PubMed](#)]
103. Dallinga, M.G.; Yetkin-Arik, B.; Kayser, R.P.; Vogels, I.M.C.; Nowak-Sliwinska, P.; Griffioen, A.W.; van Noorden, C.J.F.; Klaassen, I.; Schlingemann, R.O. IGF2 and IGF1R Identified as Novel Tip Cell Genes in Primary Microvascular Endothelial Cell Monolayers. *Angiogenesis* **2018**, *21*, 823–836. [[CrossRef](#)] [[PubMed](#)]

104. Dallinga, M.G.; Habani, Y.I.; Kayser, R.P.; Van Noorden, C.J.F.; Klaassen, I.; Schlingemann, R.O. IGF-Binding Proteins 3 and 4 Are Regulators of Sprouting Angiogenesis. *Mol. Biol. Rep.* **2020**, *47*, 2561–2572. [[CrossRef](#)]
105. Alfares, M.N.; Perks, C.M.; Hamilton-Shield, J.P.; Holly, J.M.P. Insulin-like Growth Factor-II in Adipocyte Regulation: Depot-Specific Actions Suggest a Potential Role Limiting Excess Visceral Adiposity. *Am. J. Physiol.-Endocrinol. Metab.* **2018**, *315*, E1098–E1107. [[CrossRef](#)]
106. Liang, L.; Guo, W.H.; Esquiliano, D.R.; Asai, M.; Rodriguez, S.; Giraud, J.; Kushner, J.A.; White, M.F.; Lopez, M.F. Insulin-Like Growth Factor 2 and the Insulin Receptor, But Not Insulin, Regulate Fetal Hepatic Glycogen Synthesis. *Endocrinology* **2010**, *151*, 741–747. [[CrossRef](#)]
107. Wang, M.-J.; Chen, F.; Liu, Q.-G.; Liu, C.-C.; Yao, H.; Yu, B.; Zhang, H.-B.; Yan, H.-X.; Ye, Y.; Chen, T.; et al. Insulin-like Growth Factor 2 Is a Key Mitogen Driving Liver Repopulation in Mice. *Cell Death Dis.* **2018**, *9*, 26. [[CrossRef](#)]
108. Portela-Gomes, G.M.; Höög, A. Insulin-like Growth Factor II in Human Fetal Pancreas and Its Co-Localization with the Major Islet Hormones: Comparison with Adult Pancreas. *J. Endocrinol.* **2000**, *165*, 245–251. [[CrossRef](#)]
109. Hammerle, C.M.; Sandovici, I.; Brierley, G.V.; Smith, N.M.; Zimmer, W.E.; Zvetkova, I.; Prosser, H.M.; Sekita, Y.; Lam, B.Y.H.; Ma, M.; et al. Mesenchyme-Derived IGF2 Is a Major Paracrine Regulator of Pancreatic Growth and Function. *PLoS Genet.* **2020**, *16*, e1009069. [[CrossRef](#)]
110. Sandovici, I.; Hammerle, C.M.; Virtue, S.; Vivas-Garcia, Y.; Izquierdo-Lahuerta, A.; Ozanne, S.E.; Vidal-Puig, A.; Medina-Gómez, G.; Constância, M. Autocrine IGF2 Programmes β -Cell Plasticity under Conditions of Increased Metabolic Demand. *Sci. Rep.* **2021**, *11*, 7717. [[CrossRef](#)]
111. Wilson, E.M.; Rotwein, P. Control of MyoD Function during Initiation of Muscle Differentiation by an Autocrine Signaling Pathway Activated by Insulin-like Growth Factor-II. *J. Biol. Chem.* **2006**, *281*, 29962–29971. [[CrossRef](#)]
112. Aboalola, D.; Han, V.K.M. Different Effects of Insulin-Like Growth Factor-1 and Insulin-Like Growth Factor-2 on Myogenic Differentiation of Human Mesenchymal Stem Cells. *Stem Cells Int.* **2017**, *2017*, 8286248. [[CrossRef](#)]
113. Erbay, E.; Park, I.-H.; Nuzzi, P.D.; Schoenherr, C.J.; Chen, J. IGF-II Transcription in Skeletal Myogenesis Is Controlled by MTOR and Nutrients. *J. Cell Biol.* **2003**, *163*, 931–936. [[CrossRef](#)]
114. Li, G.; Luo, W.; Abdalla, B.A.; Ouyang, H.; Yu, J.; Hu, F.; Nie, Q.; Zhang, X. MiRNA-223 Upregulated by MYOD Inhibits Myoblast Proliferation by Repressing IGF2 and Facilitates Myoblast Differentiation by Inhibiting ZEB1. *Cell Death Dis.* **2017**, *8*, e3094. [[CrossRef](#)]
115. Ge, Y.; Sun, Y.; Chen, J. IGF-II Is Regulated by MicroRNA-125b in Skeletal Myogenesis. *J. Cell Biol.* **2011**, *192*, 69–81. [[CrossRef](#)]
116. Russo, V.C.; Gluckman, P.D.; Feldman, E.L.; Werther, G.A. The Insulin-like Growth Factor System and Its Pleiotropic Functions in Brain. *Endocr. Rev.* **2005**, *26*, 916–943. [[CrossRef](#)]
117. Cline, B.H.; Steinbusch, H.W.; Malin, D.; Revishchin, A.V.; Pavlova, G.V.; Cespuglio, R.; Strekalova, T. The Neuronal Insulin Sensitizer Dicholine Succinate Reduces Stress-Induced Depressive Traits and Memory Deficit: Possible Role of Insulin-like Growth Factor 2. *BMC Neurosci.* **2012**, *13*, 110. [[CrossRef](#)]
118. Bannerman, D.M.; Rawlins, J.N.P.; McHugh, S.B.; Deacon, R.M.J.; Yee, B.K.; Bast, T.; Zhang, W.-N.; Pothuizen, H.H.J.; Feldon, J. Regional Dissociations within the Hippocampus—Memory and Anxiety. *Neurosci. Biobehav. Rev.* **2004**, *28*, 273–283. [[CrossRef](#)]
119. Fromer, M.; Roussos, P.; Sieberts, S.K.; Johnson, J.S.; Kavanagh, D.H.; Perumal, T.M.; Ruderfer, D.M.; Oh, E.C.; Topol, A.; Shah, H.R.; et al. Gene Expression Elucidates Functional Impact of Polygenic Risk for Schizophrenia. *Nat. Neurosci.* **2016**, *19*, 1442–1453. [[CrossRef](#)]
120. Ouchi, Y.; Banno, Y.; Shimizu, Y.; Ando, S.; Hasegawa, H.; Adachi, K.; Iwamoto, T. Reduced Adult Hippocampal Neurogenesis and Working Memory Deficits in the Dgcr8-Deficient Mouse Model of 22q11.2 Deletion-Associated Schizophrenia Can Be Rescued by IGF2. *J. Neurosci.* **2013**, *33*, 9408–9419. [[CrossRef](#)]
121. Yang, Y.-J.; Luo, T.; Zhao, Y.; Jiang, S.-Z.; Xiong, J.-W.; Zhan, J.-Q.; Yu, B.; Yan, K.; Wei, B. Altered Insulin-like Growth Factor-2 Signaling Is Associated with Psychopathology and Cognitive Deficits in Patients with Schizophrenia. *PLoS ONE* **2020**, *15*, e0226688. [[CrossRef](#)]
122. Allodi, I.; Comley, L.; Nichterwitz, S.; Nizzardo, M.; Simone, C.; Benitez, J.A.; Cao, M.; Corti, S.; Hedlund, E. Differential Neuronal Vulnerability Identifies IGF-2 as a Protective Factor in ALS. *Sci. Rep.* **2016**, *6*, 25960. [[CrossRef](#)]
123. García-Huerta, P.; Troncoso-Escudero, P.; Wu, D.; Thiruvalluvan, A.; Cisternas-Olmedo, M.; Henríquez, D.R.; Plate, L.; Chana-Cuevas, P.; Saquel, C.; Thielen, P.; et al. Insulin-like Growth Factor 2 (IGF2) Protects against Huntington’s Disease through the Extracellular Disposal of Protein Aggregates. *Acta Neuropathol.* **2020**, *140*, 737–764. [[CrossRef](#)]
124. Osborn, T.M.; Beagan, J.; Isacson, O. Increased Motor Neuron Resilience by Small Molecule Compounds That Regulate IGF-II Expression. *Neurobiol. Dis.* **2018**, *110*, 218–230. [[CrossRef](#)]
125. Steinmetz, A.B.; Stern, S.A.; Kohtz, A.S.; Descalzi, G.; Alberini, C.M. Insulin-Like Growth Factor II Targets the MTOR Pathway to Reverse Autism-Like Phenotypes in Mice. *J. Neurosci.* **2018**, *38*, 1015–1029. [[CrossRef](#)]
126. Patti, G.; De Mori, L.; Tortora, D.; Severino, M.; Calevo, M.; Russo, S.; Napoli, F.; Confalonieri, L.; Schiavone, M.; Thiabat, H.F.; et al. Cognitive Profiles and Brain Volume Are Affected in Patients with Silver–Russell Syndrome. *J. Clin. Endocrinol. Metab.* **2020**, *105*, e1478–e1488. [[CrossRef](#)]
127. Azzi, S.; Salem, J.; Thibaud, N.; Chantot-Bastarud, S.; Lieber, E.; Netchine, I.; Harbison, M.D. A Prospective Study Validating a Clinical Scoring System and Demonstrating Phenotypical-Genotypical Correlations in Silver-Russell Syndrome. *J. Med. Genet.* **2015**, *52*, 446–453. [[CrossRef](#)]

128. Begemann, M.; Zirn, B.; Santen, G.; Wirthgen, E.; Soellner, L.; Büttel, H.-M.; Schweizer, R.; van Workum, W.; Binder, G.; Eggermann, T. Paternally Inherited IGF2 Mutation and Growth Restriction. *N. Engl. J. Med.* **2015**, *373*, 349–356. [[CrossRef](#)]
129. Gicquel, C.; Rossignol, S.; Cabrol, S.; Houang, M.; Steunou, V.; Barbu, V.; Danton, F.; Thibaud, N.; Le Merrer, M.; Burglen, L.; et al. Epimutation of the Telomeric Imprinting Center Region on Chromosome 11p15 in Silver-Russell Syndrome. *Nat. Genet.* **2005**, *37*, 1003–1007. [[CrossRef](#)]
130. Netchine, I.; Rossignol, S.; Dufourg, M.-N.; Azzi, S.; Rousseau, A.; Perin, L.; Houang, M.; Steunou, V.; Esteva, B.; Thibaud, N.; et al. 11p15 Imprinting Center Region 1 Loss of Methylation Is a Common and Specific Cause of Typical Russell-Silver Syndrome: Clinical Scoring System and Epigenetic-Phenotypic Correlations. *J. Clin. Endocrinol. Metab.* **2007**, *92*, 3148–3154. [[CrossRef](#)]
131. Masunaga, Y.; Inoue, T.; Yamoto, K.; Fujisawa, Y.; Sato, Y.; Kawashima-Sonoyama, Y.; Morisada, N.; Iijima, K.; Ohata, Y.; Namba, N.; et al. IGF2 Mutations. *J. Clin. Endocrinol. Metab.* **2020**, *105*, 116–125. [[CrossRef](#)]
132. Brioude, F.; Oliver-Petit, I.; Blaise, A.; Praz, F.; Rossignol, S.; Le Jule, M.; Thibaud, N.; Faussat, A.-M.; Tauber, M.; Le Bouc, Y.; et al. CDKN1C Mutation Affecting the PCNA-Binding Domain as a Cause of Familial Russell Silver Syndrome. *J. Med. Genet.* **2013**, *50*, 823–830. [[CrossRef](#)] [[PubMed](#)]
133. Lokulo-Sodipe, O.; Ballard, L.; Child, J.; Inskip, H.M.; Byrne, C.D.; Ishida, M.; Moore, G.E.; Wakeling, E.L.; Fenwick, A.; Mackay, D.J.G.; et al. Phenotype of Genetically Confirmed Silver-Russell Syndrome beyond Childhood. *J. Med. Genet.* **2020**, *57*, 683–691. [[CrossRef](#)] [[PubMed](#)]
134. Van der Steen, M.; Lem, A.J.; van der Kaay, D.C.M.; Bakker-van Waarde, W.M.; van der Hulst, F.J.P.C.M.; Neijens, F.S.; Noordam, C.; Odink, R.J.; Oostdijk, W.; Schroor, E.J.; et al. Metabolic Health in Short Children Born Small for Gestational Age Treated with Growth Hormone and Gonadotropin-Releasing Hormone Analog: Results of a Randomized, Dose-Response Trial. *J. Clin. Endocrinol. Metab.* **2015**, *100*, 3725–3734. [[CrossRef](#)] [[PubMed](#)]
135. Barker, D.J.; Gluckman, P.D.; Godfrey, K.M.; Harding, J.E.; Owens, J.A.; Robinson, J.S. Fetal Nutrition and Cardiovascular Disease in Adult Life. *Lancet* **1993**, *341*, 938–941. [[CrossRef](#)]
136. Temple, I.K.; Cockwell, A.; Hassold, T.; Pettay, D.; Jacobs, P. Maternal Uniparental Disomy for Chromosome 14. *J. Med. Genet.* **1991**, *28*, 511–514. [[CrossRef](#)] [[PubMed](#)]
137. Kagami, M.; Nagasaki, K.; Kosaki, R.; Horikawa, R.; Naiki, Y.; Saitoh, S.; Tajima, T.; Yorifuji, T.; Numakura, C.; Mizuno, S.; et al. Temple Syndrome: Comprehensive Molecular and Clinical Findings in 32 Japanese Patients. *Genet. Med.* **2017**, *19*, 1356–1366. [[CrossRef](#)]
138. Scott, J.; Cowell, J.; Robertson, M.E.; Priestley, L.M.; Wadey, R.; Hopkins, B.; Pritchard, J.; Bell, G.I.; Rall, L.B.; Graham, C.F. Insulin-like Growth Factor-II Gene Expression in Wilms' Tumour and Embryonic Tissues. *Nature* **1985**, *317*, 260–262. [[CrossRef](#)]
139. Rainier, S.; Johnson, L.A.; Dobry, C.J.; Ping, A.J.; Grundy, P.E.; Feinberg, A.P. Relaxation of Imprinted Genes in Human Cancer. *Nature* **1993**, *362*, 747–749. [[CrossRef](#)]
140. Ogawa, O.; Eccles, M.R.; Szeto, J.; McNoe, L.A.; Yun, K.; Maw, M.A.; Smith, P.J.; Reeve, A.E. Relaxation of Insulin-like Growth Factor II Gene Imprinting Implicated in Wilms' Tumour. *Nature* **1993**, *362*, 749–751. [[CrossRef](#)]
141. Taniguchi, T.; Sullivan, M.J.; Ogawa, O.; Reeve, A.E. Epigenetic Changes Encompassing the IGF2/H19 Locus Associated with Relaxation of IGF2 Imprinting and Silencing of H19 in Wilms Tumor. *Proc. Natl. Acad. Sci. USA* **1995**, *92*, 2159–2163. [[CrossRef](#)] [[PubMed](#)]
142. Brioude, F.; Kalish, J.M.; Mussa, A.; Foster, A.C.; Blik, J.; Ferrero, G.B.; Boonen, S.E.; Cole, T.; Baker, R.; Bertolotti, M.; et al. Expert Consensus Document: Clinical and Molecular Diagnosis, Screening and Management of Beckwith-Wiedemann Syndrome: An International Consensus Statement. *Nat. Rev. Endocrinol.* **2018**, *14*, 229–249. [[CrossRef](#)] [[PubMed](#)]
143. Maas, S.M.; Vansenne, F.; Kadouch, D.J.M.; Ibrahim, A.; Blik, J.; Hopman, S.; Mannens, M.M.; Merks, J.H.M.; Maher, E.R.; Hennekam, R.C. Phenotype, Cancer Risk, and Surveillance in Beckwith-Wiedemann Syndrome Depending on Molecular Genetic Subgroups. *Am. J. Med. Genet. Part A* **2016**, *170*, 2248–2260. [[CrossRef](#)] [[PubMed](#)]
144. Horii, T.; Morita, S.; Hino, S.; Kimura, M.; Hino, Y.; Kogo, H.; Nakao, M.; Hatada, I. Successful Generation of Epigenetic Disease Model Mice by Targeted Demethylation of the Epigenome. *Genome Biol.* **2020**, *21*, 77. [[CrossRef](#)]
145. Giabicani, E.; Pham, A.; Sélénou, C.; Sobrier, M.-L.; Andrique, C.; Lesieur, J.; Linglart, A.; Poliard, A.; Chaussain, C.; Netchine, I. Dental Pulp Stem Cells as a Promising Model to Study Imprinting Diseases. *Int. J. Oral Sci.* **2022**, *14*, 19. [[CrossRef](#)]