



**HAL**  
open science

## Quantifying HIV transmission flow between high-prevalence hotspots and surrounding communities: a population-based study in Rakai, Uganda

Oliver Ratmann, Joseph Kagaayi, Matthew Hall, Tanya Golubchick, Godfrey Kigozi, Xiaoyue Xi, Chris Wymant, Gertrude Nakigozi, Lucie Abeler-Dörner, David Bonsall, et al.

### ► To cite this version:

Oliver Ratmann, Joseph Kagaayi, Matthew Hall, Tanya Golubchick, Godfrey Kigozi, et al.. Quantifying HIV transmission flow between high-prevalence hotspots and surrounding communities: a population-based study in Rakai, Uganda. *The Lancet HIV*, 2020, 7 (3), pp.e173-e183. 10.1016/S2352-3018(19)30378-9 . hal-03728140

**HAL Id: hal-03728140**

**<https://hal.sorbonne-universite.fr/hal-03728140>**

Submitted on 20 Jul 2022

**HAL** is a multi-disciplinary open access archive for the deposit and dissemination of scientific research documents, whether they are published or not. The documents may come from teaching and research institutions in France or abroad, or from public or private research centers.

L'archive ouverte pluridisciplinaire **HAL**, est destinée au dépôt et à la diffusion de documents scientifiques de niveau recherche, publiés ou non, émanant des établissements d'enseignement et de recherche français ou étrangers, des laboratoires publics ou privés.

# Quantifying HIV transmission flow between high-prevalence hotspots and surrounding communities: a population-based study in Rakai, Uganda



Oliver Ratmann, Joseph Kagaayi, Matthew Hall, Tanya Golubchick, Godfrey Kigozi, Xiaoyue Xi, Chris Wymant, Gertrude Nakigozi, Lucie Abeler-Dörner, David Bonsall, Astrid Gall, Anne Hoppe, Paul Kellam, Jeremiah Bazaale, Sarah Kalibbala, Oliver Laeyendecker, Justin Lessler, Fred Nalugoda, Larry W Chang, Tulio de Oliveira, Deenan Pillay, Thomas C Quinn, Steven J Reynolds, Simon E F Spencer, Robert Ssekubugu, David Serwadda, Maria J Wawer, Ronald H Gray, Christophe Fraser, M Kate Grabowski, on behalf of the Rakai Health Sciences Program and the Pangea HIV Consortium\*



## Summary

**Background** International and global organisations advocate targeting interventions to areas of high HIV prevalence (ie, hotspots). To better understand the potential benefits of geo-targeted control, we assessed the extent to which HIV hotspots along Lake Victoria sustain transmission in neighbouring populations in south-central Uganda.

**Methods** We did a population-based survey in Rakai, Uganda, using data from the Rakai Community Cohort Study. The study surveyed all individuals aged 15–49 years in four high-prevalence Lake Victoria fishing communities and 36 neighbouring inland communities. Viral RNA was deep sequenced from participants infected with HIV who were antiretroviral therapy-naïve during the observation period. Phylogenetic analysis was used to infer partial HIV transmission networks, including direction of transmission. Reconstructed networks were interpreted through data for current residence and migration history. HIV transmission flows within and between high-prevalence and low-prevalence areas were quantified adjusting for incomplete sampling of the population.

**Findings** Between Aug 10, 2011, and Jan 30, 2015, data were collected for the Rakai Community Cohort Study. 25 882 individuals participated, including an estimated 75·7% of the lakeside population and 16·2% of the inland population in the Rakai region of Uganda. 5142 participants were HIV-positive (2703 [13·7%] in inland and 2439 [40·1%] in fishing communities). 3878 (75·4%) people who were HIV-positive did not report antiretroviral therapy use, of whom 2652 (68·4%) had virus deep-sequenced at sufficient quality for phylogenetic analysis. 446 transmission networks were reconstructed, including 293 linked pairs with inferred direction of transmission. Adjusting for incomplete sampling, an estimated 5·7% (95% credibility interval 4·4–7·3) of transmissions occurred within lakeside areas, 89·2% (86·0–91·8) within inland areas, 1·3% (0·6–2·6) from lakeside to inland areas, and 3·7% (2·3–5·8) from inland to lakeside areas.

**Interpretation** Cross-community HIV transmissions between Lake Victoria hotspots and surrounding inland populations are infrequent and when they occur, virus more commonly flows into rather than out of hotspots. This result suggests that targeted interventions to these hotspots will not alone control the epidemic in inland populations, where most transmissions occur. Thus, geographical targeting of high prevalence areas might not be effective for broader epidemic control depending on underlying epidemic dynamics.

**Funding** The Bill & Melinda Gates Foundation, the National Institute of Allergy and Infectious Diseases, the National Institute of Mental Health, the National Institute of Child Health and Development, the Division of Intramural Research of the National Institute for Allergy and Infectious Diseases, the World Bank, the Doris Duke Charitable Foundation, the Johns Hopkins University Center for AIDS Research, and the President's Emergency Plan for AIDS Relief through the Centers for Disease Control and Prevention.

**Copyright** © 2020 The Author(s). Published by Elsevier Ltd. This is an Open Access article under the CC BY 4.0 license.

## Introduction

Spatial mapping of infectious diseases, including malaria, tuberculosis, cholera, and HIV has shown considerable spatial heterogeneity in disease prevalence and incidence.<sup>1–3</sup> From a public health perspective, a primary objective of mapping efforts is the identification of so-called hotspots—typically defined as spatial clusters of elevated disease burden or transmission efficiency—to

target the highest risk populations, and maximise the public health effect of interventions.<sup>3</sup> Geographically focused approaches to disease control are supported by modelling studies, which suggest that targeting a small proportion of the population with elevated contact rates and disease incidence (ie, a core group) relative to the overall population has the potential to avert most infections, otherwise known as the 80/20 rule.<sup>4</sup> However,

*Lancet HIV* 2020; 7: e173–83

Published Online  
January 14, 2020  
[https://doi.org/10.1016/S2352-3018\(19\)30378-9](https://doi.org/10.1016/S2352-3018(19)30378-9)  
See [Comment](#) page e151

This online publication has been corrected. The corrected version first appeared at [thelancet.com/hiv](http://thelancet.com/hiv) on February 6, 2020

\*Investigators are listed at the end of the Article

Department of Mathematics, Imperial College London, London, UK  
(O Ratmann PhD, X Xi MSc); Rakai Health Sciences Program, Kalisizo, Old-Bukoba Road, Uganda (J Kagaayi PhD, G Kigozi PhD, G Nakigozi PhD, J Bazaale BSc, S Kalibbala BSc, F Nalugoda PhD, L W Chang MD, S J Reynolds MD, R Ssekubugu MSPH, Prof D Serwadda MChB, Prof M J Wawer MD, Prof R H Gray MD, M K Grabowski PhD); Oxford Big Data Institute, Li Ka Shing Centre for Health Information and Discovery, Nuffield Department of Medicine, University of Oxford, Oxford, UK (M Hall PhD, T Golubchick PhD, C Wymant PhD, L Abeler-Dörner PhD, D Bonsall PhD, Prof C Fraser PhD); European Molecular Biology Laboratory-European Bioinformatics Institute, Wellcome Genome Campus, Hinxton, UK (A Gall PhD); Division of Infection and Immunity, University College London, London, UK (A Hoppe PhD, Prof D Pillay PhD); Department of Medicine, Imperial College London, London, UK (Prof P Kellam PhD); Department of Medicine (O Laeyendecker PhD, L W Chang

Prof T C Quinn MD, S J Reynolds  
and Department of Pathology  
(M K Grabowski PhD), Johns  
Hopkins School of Medicine,  
Baltimore, MD, USA; Division of  
Intramural Research, National  
Institute of Allergy and  
Infectious Diseases, NIH,  
Bethesda, MD, USA  
(O Laeyendecker, Prof T C Quinn,  
S J Reynolds); Department of  
Epidemiology, Johns Hopkins  
Bloomberg School of Public  
Health, Baltimore, MD, USA  
(J Lessler PhD, L W Chang,  
Prof M J Wawer, Prof R H Gray);  
KwaZulu-Natal Research  
Innovation and Sequencing  
Platform College of Health  
Sciences, University of  
KwaZulu-Natal, Durban, South  
Africa (Prof T de Oliveira PhD,  
M K Grabowski); Department  
of Statistics, University of  
Warwick, Coventry, UK  
(S E F Spencer PhD); and  
Makerere University School of  
Public Health, Kampala, Uganda  
(Prof D Serwadda)

Correspondence to:  
Dr Oliver Ratmann, Department  
of Mathematics, Imperial College  
London, London SW7 2AZ, UK  
oliver.ratmann@imperial.ac.uk

or

Dr Mary K Grabowski,  
Department of Pathology, Johns  
Hopkins School of Medicine,  
Baltimore, MD 21205, USA  
mgrabow2@jhu.edu

## Research in context

### Evidence before this study

High-resolution spatial mapping of HIV disease prevalence revealed numerous geographical hotspots of high prevalence throughout the African continent. This information is used to target public health interventions to hyperendemic communities to maximise cost-effectiveness of interventions, and often with the implicit assumption that HIV hotspots serve as sources of transmission to the larger, low prevalence populations. We searched PubMed for all article types published between database inception and April 15, 2019, using search terms related to "HIV", "hotspots", "core groups", "spatial", and "Africa". Few studies have investigated the flow of HIV infection between foci of high prevalence (ie, hotspots) and relatively lower prevalence areas using empirical methods. East African communities along Lake Victoria represent some of the highest prevalence communities worldwide with levels greater than three times those in the inland population. One previous study investigated direction of HIV flow between Lake Victoria fishing and inland communities in Uganda using phylogenetic analysis of HIV consensus sequences. However, this study did not identify linkages between inland and fishing communities because of low sampling fractions, and was unable to quantify the flow of infection between the populations. Furthermore, it did not integrate data for population mobility patterns.

### Added value of this study

In this study, we used HIV deep sequence data from a population-based sample to reconstruct directed HIV transmission networks, and examine the epidemic dynamics

between geographical hotspots with high HIV burden along Lake Victoria and surrounding inland communities. We used data from the Rakai Community Cohort Study, an open population-based cohort that provided a high sampling fraction of the communities, which is rare in phylogenetic studies, as well as detailed information on individual-level human migration patterns. We integrated HIV phylogenetic and human migration data, and showed that Lake Victoria and inland epidemics are largely distinct based on a sample of 293 phylogenetically highly supported transmission pairs. Where there is cross-community transmission, it is predominantly from inland to Lake Victoria fishing communities and not vice versa. We also show that men are more likely than women to transmit HIV, and that migrants do not contribute to onward HIV transmission in excess of their prevalence in the population.

### Implications of all the available evidence

Our findings showed that within sub-Saharan Africa, HIV transmission networks in high prevalence areas can be largely disconnected from those in adjacent lower prevalence populations, and caution against equating and stigmatising HIV hotspots in sub-Saharan Africa universally as population groups that drive disease spread. Geographical targeting of high prevalence areas is essential for local populations in hotspots, but under the same conditions as in the fishing communities of the Rakai Community Cohort Study would have a limited effect on the HIV epidemic in neighbouring lower prevalence communities.

the overall projected impact of targeted interventions depends on the rate of transmission from core groups to the rest of the population.<sup>1</sup> Targeting core groups has been used in the control of sexually transmitted infections for decades,<sup>5</sup> for example gonorrhoea, in which geo-targeted approaches to high-burden areas have proved effective.<sup>6</sup>

With respect to HIV, the President's Emergency Plan for AIDS Relief, the Global Fund, WHO, and UNAIDS among others have advocated geographical targeting of HIV control interventions to hotspots.<sup>7,8</sup> These recommendations include calls for HIV elimination in the USA, based on targeting of geographical hotspots to "disrupt the kinetics of HIV spread".<sup>9</sup> Although targeting interventions to high-burden populations is ethically justified, and necessary for reducing HIV morbidity and mortality, it is unclear whether such focused approaches would also reduce transmission more broadly. In some cases, HIV hotspots and other high-prevalence groups have been directly or implicitly assumed to constitute core groups disproportionately disseminating infection to the wider transmission network.<sup>10,11</sup> This assumption, while potentially stigmatising for residents living in hotspots, implies that geographically focused interventions would not only have a direct impact in the targeted geographies

but also indirect benefits in the broader population. However, this theory of infection flow from high to low burden populations is rarely confirmed in practice, in part because it is difficult to empirically measure.

In sub-Saharan Africa, where two-thirds of new HIV infections worldwide occur, hotspots include fishing communities bordering the Great Lakes of east and central Africa. These communities typically have a high HIV prevalence, ranging from 20% to 40%, and HIV incidence exceeding 3% annually.<sup>12-14</sup> Historically, Lake Victoria fishing communities also have populations with high levels of mobility, HIV-related risk behaviours, and high sexual contact rates, as well as limited access to health services relative to inland east African populations.<sup>12,13,15</sup> In 2013, the Ugandan Ministry of Health classified Lake Victoria fishing communities as priority populations for targeted combination HIV prevention services including antiretroviral therapy (ART) at time of HIV diagnosis irrespective of CD4 cell count, HIV counselling and testing, male circumcision, and risk reduction education.<sup>16</sup> The rationale for targeting fishing communities was based on their high HIV burden, and because they were believed to be acting as core groups sustaining the generalised inland epidemic.<sup>17</sup>

Here, we integrated viral phylogenetic and epidemiological data to empirically measure HIV transmission flows between high HIV prevalence hotspots on Lake Victoria and larger neighbouring inland populations with substantially lower HIV burden in the Rakai region of southern Uganda. We reconstructed directed, partial HIV-1 transmission networks using deep-sequence viral phylogenetic data. Given the high population mobility, networks were interpreted in conjunction with individual-level data for migration patterns to measure transmission flows between fishing and inland communities. We hypothesised that the predominant mode of cross-community infection would be from the high-prevalence hotspots on Lake Victoria to the lower prevalence inland population.

## Methods

### Study design and participants

We did a population-based study using data from the Rakai Community Cohort Study (RCCS) in 36 inland communities of the Rakai region in south-central Uganda shown in figure 1A, and the main four fishing communities within 3 km of Lake Victoria.<sup>13</sup> The data were collected in two survey rounds in inland communities, and three survey rounds in fishing communities. For each survey round, the RCCS did a household census with GPS coding of household location, followed by a survey of consenting eligible participants aged 15–49 years to ascertain sociodemographic characteristics, sexual risk behaviours, health, and health service use. The RCCS included all age-eligible individuals capable of providing informed consent and resident within the RCCS communities for at least 1 month with the intention to stay. Detailed information was collected on migration history and sexual partners within the past year. HIV status was determined through rapid tests at the time of survey, and confirmatory enzyme immunoassays. All participants were provided with pre-test and post-test counselling, and referral of individuals who were HIV-positive for ART. Individuals were identified using permanent population identifiers, confirmed by photo identification. The last available HIV test result in the observation period was used to establish the infection status of participants (appendix p 8).

The surveyed fishing and inland populations were not proportionate samples of the underlying lakeside population within 3 km of Lake Victoria and the inland region shown in figure 1A. To account for differential sampling, we estimated population sizes in these areas by aggregating high-resolution population density estimates from the WorldPop project, which were checked against population statistics from the Ugandan Bureau of Statistics where possible (appendix p 18).

The study was independently reviewed and approved by the Ugandan Virus Research Institute, Scientific Research and Ethics Committee, protocol GC/127/13/01/16; the Ugandan National Council of Science and Technology;

and the Western Institutional Review Board, protocol 200313317. All study participants provided written informed consent at baseline and follow-up visits using institutional review board approved forms.

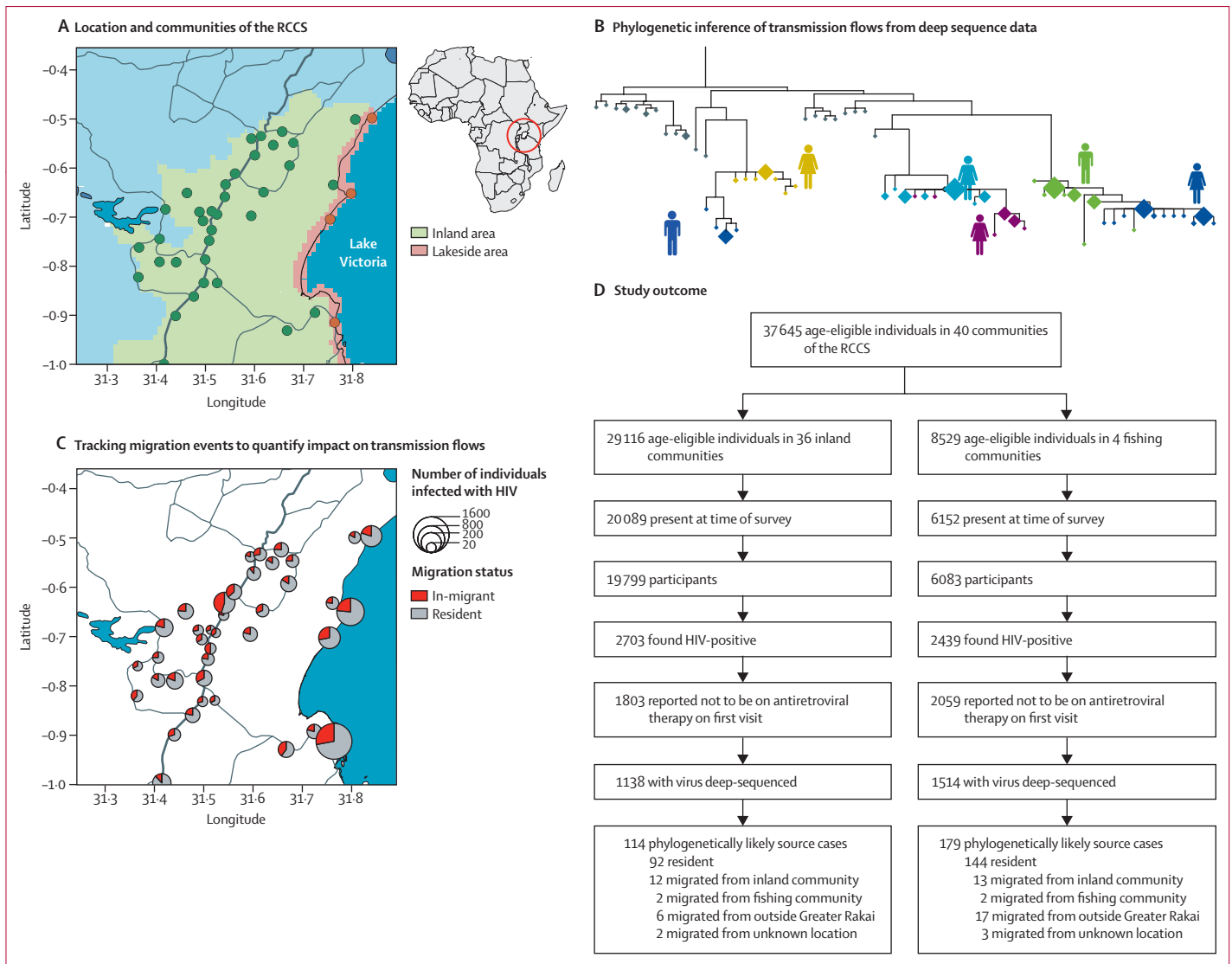
### Procedures

To infer transmission networks by phylogenetic analysis, viral sequencing was done on plasma blood samples from all individuals who were infected with HIV who self-reported being ART-naive at the time of the survey. This selection criterion was motivated by the fact that self-reported ART use reflected actual ART use with high specificity and sensitivity, and that 90% of individuals who reported ART use had suppressed virus less than 1000 copies per mL of plasma,<sup>18</sup> below which viral deep sequencing was not possible within our protocol.<sup>19,20</sup> Deep sequencing based on the protocol of Gall and colleagues<sup>19</sup> generated many sequence fragments that capture viral diversity within individuals (figure 1B), which unlike Sanger sequencing, enables phylogenetic inference into the direction of transmission from sequence data alone.<sup>21</sup> Phylogenetic transmission networks in the population-based sample were reconstructed from deep-sequence data with phyloscanner,<sup>20,22</sup> which addresses caveats in deep-sequence phylogenetic analysis such as read contamination, and has an estimated false discovery rate in inferring the incorrect direction of transmission of 15–20%.<sup>20</sup> To capture uncertainty in phylogenetic inferences, phylogenetic relationships were evaluated in a large number of deep-sequence phylogenies sliding across the HIV genome. Pairs of individuals with evidence for phylogenetic linkage and transmission in one direction in at least 60% of phylogeny evaluations were identified and considered to be highly supported source–recipient pairs. The threshold was determined in analysis of pairs with epidemiological evidence on the direction of transmission.<sup>20</sup>

To interpret reconstructed source–recipient pairs in the context of population mobility, migrants were identified at census and defined as people who had moved into a community regardless of distance travelled or whether or not the source community was under RCCS surveillance (figure 1C). To be included in the survey, in-migrating individuals were required to have stayed in the community for at least 1 month or, if this was not the case, they intend to stay in the community for 6 months or longer. In-migrating individuals were classified as such if they in-migrated into the cohort community within 2 years before their first visit in the observation period, and otherwise they were classified as residents. To estimate transmission flows, phylogenetically likely sources were classified as in-migrants if they in-migrated into the cohort in the 2 years before the date at which their transmission recipient was found to be infected, and it was assumed that the individual acquired infection at the community of origin. The community of origin of migration was recorded as a free response variable and

See Online for appendix

For the WorldPop project see <https://www.worldpop.org/>



**Figure 1: Study design**

(A) Locations of the RCCS in eastern Africa (left) and the Rakai region of Uganda where the RCCS survey was done (right). The RCCS included an estimated 75.7% of populations in the lakeside area within 3 km of the Lake Victoria shoreline (light brown), and 16.2% of populations in the inland area of the Rakai region (light green). Areas classified as external in this study are shown in light blue. Not shown is one RCCS community northwest outside the map, in which virus sequences were not obtained. (B) The phyloscanner approach for inferring directed HIV transmission networks from deep sequence phylogenies based on ancestral relationships between infecting viruses. With viral deep-sequencing, co-circulating HIV lineages within hosts are represented by many distinct sequence fragments in the data (diamonds, size indicating frequency with which distinct virus was sequenced). In the corresponding phylogenies, sequences from the same individual tend to form subtrees (colours, one for each of the six individuals shown). The ordering of subtrees provides evidence of the direction of transmission. (C) Scale of in-migration into the cohort. For this purpose, RCCS participants were classified as in-migrants if they in-migrated into the cohort in the 2 years before their first visit in the observation period, and otherwise as residents. The panel shows the proportion of in-migrants and residents as well as the size of the population infected with HIV. (D) Key study outcomes including participation, sequencing, and linkage rates. RCCS=Rakai Community Cohort Study.

geo-coded using Google Earth by Ugandan co-investigators with local expertise. Sensitivity analyses using alternative definitions of in-migrants are described in the appendix (p 22).

**Statistical analysis**

Individual geo-location and migration data were used to attribute source and destination locations for each source–recipient pair. The geo-location of each recipient in a pair was set to the community in which the recipient

was found to be infected. For the phylogenetically likely source partner, the location was set to the community of residence at or shortly before the recipient was identified as HIV-positive. If the source partner had migrated within the past 2 years, the location was set as the community before migration. To estimate transmission flows in the cohort, we first counted the proportion of source–recipient pairs by source and destination locations (unadjusted estimates). Next, we adjusted for differential RCCS participation and sequence sampling

rates by individual-level characteristics with Bayesian multilevel models as detailed in the appendix (p 12) using the phyloflows R package version 1.1.0. Finally, we predicted transmissions flows between inland and fishing areas (predictions). To do this, we scaled the adjusted estimates of transmission flows between RCCS communities by the number of men and women in inland and fishing areas as detailed in the appendix (p 18). Sensitivity analyses are reported in the appendix (p 21). When not specified, adjusted estimates of transmission flows are reported throughout.

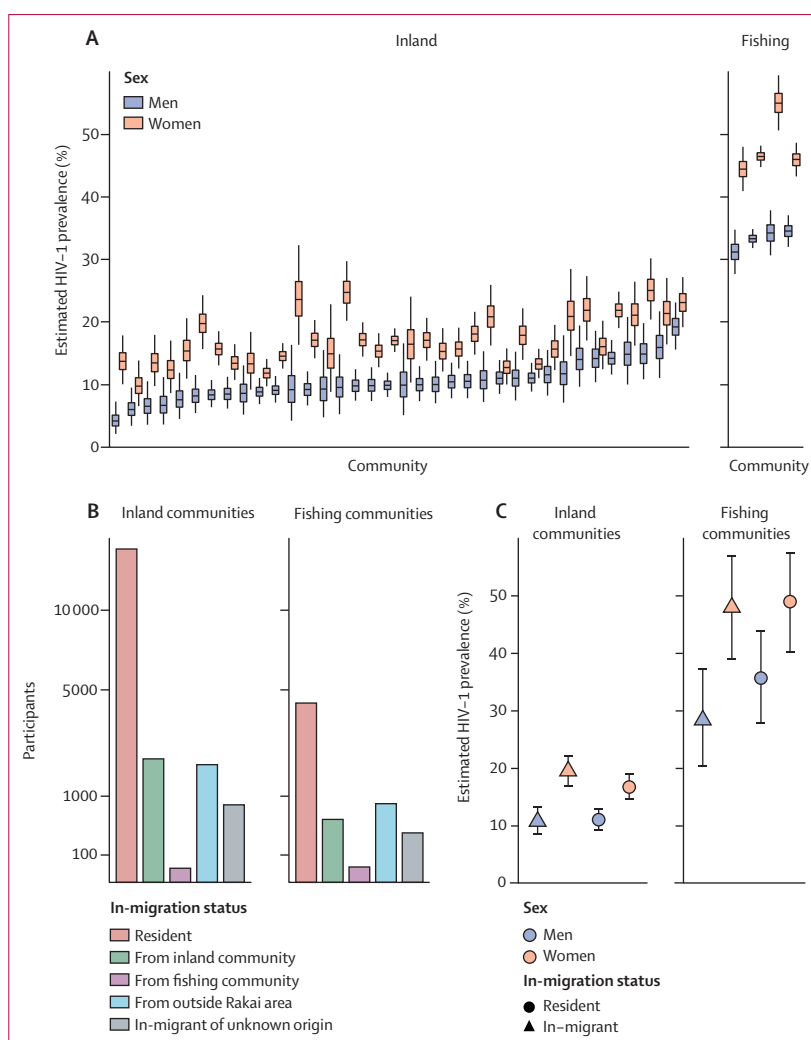
### Role of the funding source

The funders of the study had no role in the data collection, data analysis, data interpretation, or writing of the report. The corresponding authors had full access to all the data in the study, and had final responsibility for the decision to submit for publication.

### Results

From Aug 10, 2011, to Jan 30, 2015, 25 882 individuals in 40 communities participated in the RCCS (figure 1D). An estimated 179 982 individuals aged 15–49 years lived in the inland area. 29 116 (16.2%) were census-eligible residents in the 36 inland RCCS communities, of whom 19 799 (68.0%) participated in the survey and provided a blood sample for HIV detection. Of an estimated 11 272 individuals aged 15–49 years in the lakeside area, 8529 (75.7%) individuals were census-eligible in the four fishing communities of the RCCS, of whom 6083 (71.3%) participated in the survey. Participation rates varied by sex, age, and migration status (appendix p 15). The most common reason for non-participation was absence for work or school (96.9%). In the inland communities, 2703 (13.7%) participants were HIV-positive. In the fishing communities, 2439 (40.1%) participants were HIV-positive. HIV prevalence was higher in the fishing communities than inland communities for both men and women (figure 2A).

6511 (25.2%) of 25 882 survey participants were classified as in-migrants,<sup>23</sup> of whom 2710 (41.6%) originated from outside the Rakai region, 59 (0.9%) from locations on the shores of Lake Victoria, 2598 (39.9%) from inland locations in the Rakai region, and 1144 (17.6%) had no resolved location of migration origin (figure 2B). In the four RCCS fishing communities, 837 (48.2%) in-migrants originated from outside the Rakai area, 32 (1.8%) from locations on the shores of Lake Victoria, 536 (30.9%) from inland locations in the Rakai area, and 331 (19.1%) had no resolved source location. In the RCCS inland communities, 1873 (39.2%) in-migrants originated from outside the Rakai area, 27 (0.6%) from locations on the shores of Lake Victoria, 2062 (43.2%) from inland locations in the Rakai area, and 813 (17.0%) had no resolved source location. The proportion of in-migrants among study participants was similar in inland and fishing communities

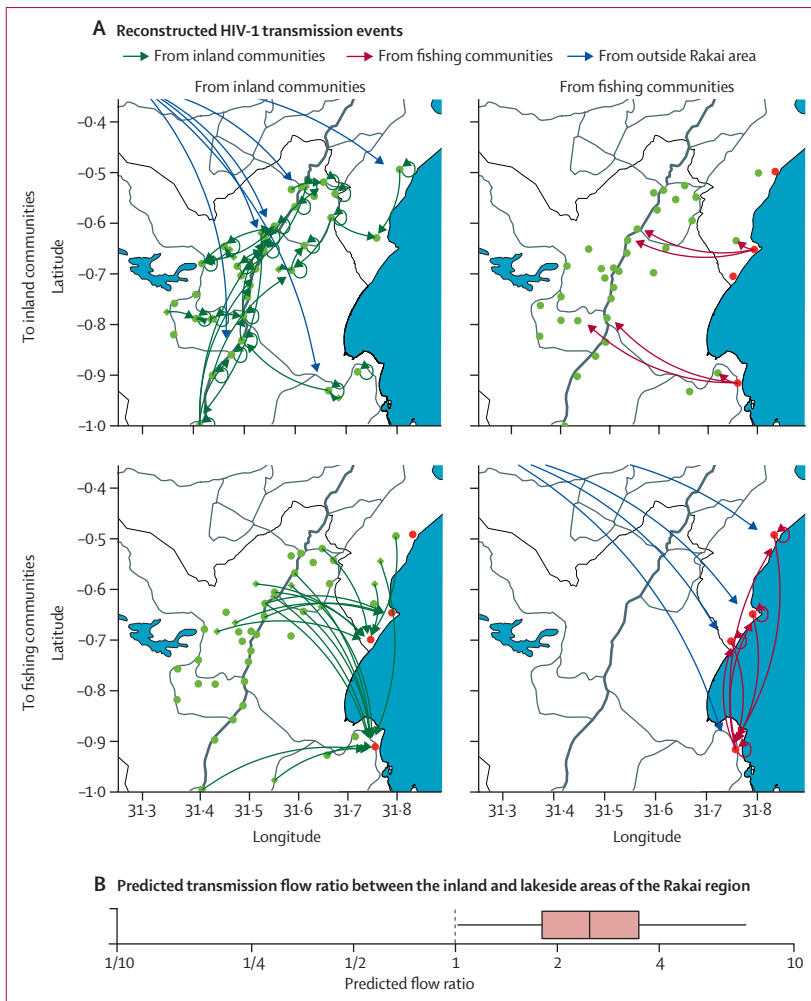


**Figure 2: HIV prevalence and migration in inland and fishing communities**

(A) Estimates of HIV prevalence in RCCS communities for men (blue) and women (pink) in inland communities (left panel) and fishing communities (right panel). Boxplots indicate central estimates (black bar), IQRs (box), and 95% credibility intervals (whiskers). HIV prevalence was substantially higher in fishing communities for both men and women. (B) Number of RCCS participants in inland and fishing communities by in-migration status. Participants who in-migrated within 2 years before study visit were stratified by the origin of migration, from inland communities (green), from fishing communities (purple), from outside the Rakai area (light blue), and from unknown location (grey). (C) Estimates of HIV prevalence among in-migrants to inland communities to that among in-migrants to fishing communities. HIV prevalence was higher among those individuals migrating to fishing communities than those migrating to inland communities. Sex specific estimates in panels A and C were obtained with Bayesian logistic regression models using the Stan software, version 2.19.

(24.1% vs 28.5%), but substantially more participants migrated from inland to fishing communities ( $n=536$ ) than vice versa ( $n=27$ ). Among the in-migrants who moved into fishing communities, HIV prevalence was significantly higher than among in-migrants who moved into inland communities (figure 2C).

There were 3878 (75.4%) individuals infected with HIV who reported no ART use on at least one survey visit in the observation period, and the first sample from these individuals was prepared for viral sequencing (appendix p 5). Deep-sequencing yielded output of



**Figure 3: Phylogenetically highly supported transmission flows in the population-based sample, and predicted transmission flows**  
 Viral deep-sequence phylogenetics identified 293 source–recipient pairs with strong phylogenetic support for epidemiological linkage and the direction of transmission. Transmission events were geo-located to the communities in which the phylogenetically likely sources and recipients had their households, or to the origin of recent in-migration events. (A) Phylogenetically reconstructed transmission events. 94 phylogenetically reconstructed transmissions events occurred from inland to inland communities, and six occurred from outside the Rakai area to inland communities; seven were observed from fishing to inland communities; 23 occurred from inland to fishing communities; 141 occurred from fishing to fishing communities, and 17 from outside the Rakai area to fishing communities. Not shown are two phylogenetically probable transmission events with unknown source location to inland communities, and three such events to fishing communities. (B) Predicted transmission flow ratio among populations living in inland and lakeside areas of the Rakai region, after adjusting for survey, participation, and sequence sampling bias. The predicted flow ratio of transmissions from inland to lakeside areas compared with the opposite direction was 2.50 (95% CrI 1.02–7.30).

moderate quality.<sup>24</sup> Analysis was restricted to samples from 2652 individuals who satisfied minimum criteria on read length and read depth,<sup>20</sup> which implied a sampling fraction of 68.4% among participants who were infected and self-reported being ART-naive, and an estimated sampling fraction of 45.1% among census-eligible individuals who were infected with unsuppressed virus.<sup>20</sup> Sequence sampling rates varied by sex, age, migration status, and across RCCS communities (appendix p 16).

From the population-based deep-sequencing data, 446 HIV transmission networks were reconstructed, which included 293 source–recipient pairs with strong phylogenetic support for epidemiological linkage and the direction of transmission (appendix p 5). Following previous arguments,<sup>20</sup> we expected that for approximately 800 (30.2%) of the 2652 sampled individuals, our data also contain sequences from their transmitter, suggesting that phylogenetic analysis probably did not identify all transmission events between sampled individuals. In 57 (19.5%) of the source–recipient pairs, the likely transmitter had migrated in the 2 years before diagnosis of the recipient, suggesting that the current residence of the likely transmitter at the time of the survey was not necessarily the location at which they acquired infection. We defined the source location for these 57 pairs as the origin of migration of the likely transmitter. Sensitivity analyses that re-defined the source location for likely transmitters who in-migrated in 6, 12, 36, and 48 months before diagnosis of the recipient are reported in the appendix (p 22), and did not substantially change our results.

Figure 3 shows the transmission flows inferred among the 293 source–recipient pairs. 235 (80.2%) transmission events occurred within inland communities or within fishing communities, 30 (10.4%) occurred between them, 23 (7.8%) were from outside the Rakai region, and five (1.7%) had an unknown source location (table). There were more transmissions from inland to fishing communities than vice versa (23 vs seven). The unadjusted flow ratio from inland to fishing communities was 3.29 (23 of 264 to seven of 264).

After adjusting for variation in participation and sequencing rates, an estimated 80.1% (95% credibility interval [CrI] 75.1–84.6) of transmissions were within inland communities or within fishing communities, 7.8% (5.1–11.3) were from inland to fishing communities, 3.5% (1.7–6.3) were from fishing to inland communities, 5.8% (3.5–8.9) were from outside the Rakai region to fishing communities, and 2.5% (1.0–5.0) were from outside the Rakai region to inland communities (table). Considering that the study population comprised an estimated 16.2% of the inland population and 75.7% of the lakeside population of the region where the RCCS survey was done, it is only possible to interpret the combined estimate of transmission flows within inland and within fishing communities. The estimated adjusted flow ratio from inland to fishing communities was 2.25 (95% CrI 1.04–5.23).

We next scaled the adjusted estimates within and between RCCS communities to the populations living in inland and lakeside areas of the Rakai region shown in figure 1A, giving a prediction for transmission patterns within the inland and the lakeside areas in which the study communities are located. The predicted proportion of transmissions was 88.7% (95% CrI 84.5–91.9) within the inland area, 5.2% (3.8–7.0) within the lakeside area,

	Recipient population	Phylogenetically supported transmission flows among RCCS communities*	Estimated contribution to overall HIV-1 transmission among RCCS communities† (posterior mean)	Predicted contribution to overall HIV-1 transmission among inland and lakeside areas of the Rakai region‡ (posterior predictive mean)
<b>Source overall</b>				
Fishing communities	Fishing communities	141 (48.1%)	44.5% (38.6–50.5)	5.2% (3.8–7.0)
Fishing communities	Inland communities	7 (2.4%)	3.5% (1.7–6.3)	1.7% (0.6–3.5)
Inland communities	Fishing communities	23 (7.8%)	7.8% (5.1–11.3)	4.3% (2.3–7.0)
Inland communities	Inland communities	94 (32.1%)	35.5% (29.8–41.6)	88.7% (84.5–91.9)
External to Rakai area	Fishing communities	17 (5.8%)	5.8% (3.5–8.9)	..
External to Rakai area	Inland communities	6 (2.0%)	2.5% (1.0–5.0)	..
Unknown origin	Fishing communities	3 (1.0%)	..	..
Unknown origin	Inland communities	2 (0.7%)	..	..
<b>Source by sex</b>				
Men, fishing communities	Women, fishing communities	79 (27%)	25.3% (20.6–30.5)	2.9% (2.0–4.2)
Men, fishing communities	Women, inland communities	6 (2.0%)	3.1% (1.4–5.9)	1.5% (0.5–3.2)
Men, inland communities	Women, fishing communities	12 (4.1%)	4.2% (2.2–7.0)	2.5% (1.1–4.8)
Men, inland communities	Women, inland communities	59 (20.1%)	22.3% (17.4–27.7)	55.8% (44.5–66.2)
Men, external to Rakai area	Women, fishing communities	8 (2.7%)	2.6% (1.2–4.9)	..
Men, external to Rakai area	Women, inland communities	4 (1.4%)	1.5% (0.5–3.7)	..
Men, unknown origin	Women, fishing communities	3 (1.0%)	..	..
Men, unknown origin	Women, inland communities	2 (0.7%)	..	..
Women, fishing communities	Men, fishing communities	62 (21.2%)	19.0% (14.8–23.8)	2.2% (1.5–3.2)
Women, fishing communities	Men, inland communities	1 (0.3%)	0.2% (0.0–1.2)	0.1% (0.0–0.9)
Women, inland communities	Men, fishing communities	11 (3.8%)	3.5% (1.8–6.0)	1.7% (0.7–3.3)
Women, inland communities	Men, inland communities	35 (11.9%)	13.1% (9.4–17.6)	32.8% (22.7–44.0)
Women, external to Rakai area	Men, fishing communities	9 (3.1%)	3.0% (1.5–5.5)	..
Women, external to Rakai area	Men, inland communities	2 (0.7%)	0.8% (0.1–2.5)	..
Women, unknown origin	Men, fishing communities	0	..	..
Women, unknown origin	Men, inland communities	0	..	..

Data are n (%) or mean (95% credibility interval). RCCS=Rakai Community Cohort Study. \*Phylogenetically reconstructed transmission events, unadjusted. †Estimates based on phylogenetically reconstructed events, and adjusted for participation and sequencing differences via a Bayesian multi-level model; see appendix p 11. ‡Predictions based on a fitted Bayesian multi-level model, and extrapolated from eligible individuals who live in RCCS communities to the inland and fishing areas shown in figure 1A; see appendix p 18.

**Table: HIV-1 transmission between sites with high and low HIV-1 prevalence in Greater Rakai, Uganda**

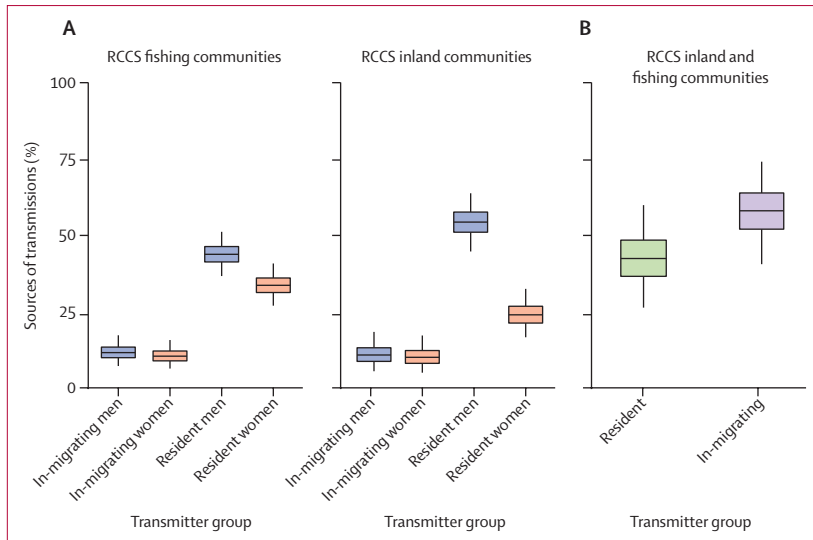
4.3% (2.3–7.0) from inland to lakeside areas, and 1.7% (0.6–3.5) from lakeside to inland areas (table). The predicted flow ratio from inland to lakeside areas was 2.5 (95% CrI 1.0–7.3). We report estimates of the sources of infection in each of the population groups and the recipients of transmissions from each of the population groups in the appendix (p 6).

An estimated 59.7% (95% CrI 53.9–65.3) of transmissions in RCCS communities originated from men, whereas the majority of infected participants were women (3149 [61.2%] of 5142). To investigate this transmission bias, we stratified the source populations in inland and fishing communities by sex and migration status (figure 4A). The gender bias was larger in inland communities than fishing communities (appendix p 3). Further, in inland communities, the ratio in transmissions from in-migrating men compared with in-migrating women was 1.07 (95% CrI 0.44–2.66), and the ratio of transmissions from resident men

compared with resident women was 2.26 (1.45–3.62). In fishing communities, the ratio in transmissions from in-migrating men compared with in-migrating women was 1.11 (95% CrI 0.57–2.16), and the ratio of transmissions from resident men compared with resident women was 1.30 (0.94–1.82).

An estimated 22.1% (95% CrI 17.3–27.5) of all transmissions originated from in-migrants, which was not larger than the proportion of participants who were infected who were in-migrants (appendix p 4). We further suspected that migration of individuals who were HIV-positive could have a larger effect specifically on cross-community transmissions between fishing and inland communities, and thus we quantified the proportion of cross-community transmissions that resulted from migration (figure 4B). An estimated 42.2% (95% CrI 26.1–59.7) of cross-community transmissions originated from residents of inland communities who had partners in fishing communities





**Figure 4: Effect of sex and migration on transmission flows**

(A) Estimated sources of transmission in inland and fishing communities of the RCCS. (B) Estimated amount of cross-community transmissions between inland and fishing communities originating from residents with partners outside their community and from in-migrants. Estimates in both panels were obtained as described in the appendix (p 11), and adjusted for heterogeneity in participation and sequence sampling. In fishing communities, an estimated 33.6% (95% CrI 26.7–40.7) of transmissions originated from resident women, 43.7% (36.7–51.1) from resident men, 10.5% (6.5–15.8) from in-migrating women, and 11.7% (6.5–15.8) from in-migrating men. In inland communities, an estimated 24.0% (95% CrI 16.7–33.5) of transmissions originated from resident women, 54.2% (44.7–63.6) from resident men, 10.1% (5.1–17.3) from in-migrating women, and 10.9% (5.6–18.4) from in-migrating men. Boxes are 50% CrI and whiskers are 95% CrI. RCCS=Rakai Community Cohort Study. 95% CrI=95% credible interval.

(or vice versa from residents of fishing communities who had partners in inland communities), and 57.8% (95% CrI 40.3–73.9) originated from in-migrants from inland communities to fishing communities who had partners in fishing communities (or vice versa).

## Discussion

Understanding the extent to which geographical areas with a high HIV burden contribute to transmission in neighbouring lower prevalence populations is important for guiding targeted HIV control efforts. In this study, we reconstructed HIV transmission networks in southern Uganda using deep-sequence HIV phylogenetics. We then integrated these data with individual-level information on migration to assess whether high HIV burden fishing communities (around 40% prevalence) along Lake Victoria are major sources of HIV transmission to larger, lower prevalence inland communities (around 14% prevalence). Previously, it has been shown that Lake Victoria fishing communities are geographical hotspots of HIV prevalence and incidence in the east Africa region.<sup>12–14</sup> However, our results showed that HIV acquisition in the southern Ugandan inland is largely unrelated to the Lake Victoria epidemic. Furthermore, among the few infections between lakeside and inland areas, transmission flow is more than twice as likely to be from inland to fishing areas than vice versa. These results add to earlier

findings from smaller Ugandan studies suggesting that the epidemic on the Lake Victoria shores is distinct from that in the east African inland.<sup>25</sup> Our results, along with previous research, imply that targeted control in these lakeside hotspots, while essential for the local population, would have minimal effect on the epidemic in the larger inland populations, which we found accounts for the vast majority of total transmissions (around 90%).

Transmission flows between high and low prevalence populations have previously been assessed through phylogenetic analyses of consensus genomes.<sup>26</sup> However, these approaches require modelling assumptions to infer the directionality of transmission between populations. By contrast, transmission flows can be estimated directly from analyses of deep-sequence data that account for within-host HIV diversity and ancestral relationships between viruses.<sup>21,22</sup> We have previously validated deep-sequence phylogenetic analyses in the Rakai population and showed that although our methods cannot prove direct transmission between two individuals, the direction of transmission can be inferred with sufficient accuracy for epidemiological analysis.<sup>20</sup> In this analytical framework, we were further able to adjust for differential sampling of the population, and obtain population-level estimates of transmission flows, which is otherwise challenging. Although fishing communities have been assumed to be major sources of HIV transmission within east Africa,<sup>10,17</sup> our findings did not support this theory. This work highlights the use of phylogenetic approaches to not only identify but also rule out groups suspected of driving HIV spread.

Other studies have found merit in geo-targeted HIV control in African settings, particularly when hotspots comprise large numbers of people infected with HIV.<sup>27</sup> For example, a study in Kenya found that geo-targeted HIV control was more effective than universal approaches even without considering the potential indirect benefits to surrounding areas.<sup>27</sup> In KwaZulu-Natal, South Africa, a hotspot along a major highway was shown to be an important corridor of HIV incidence with substantial phylogenetic linkage to surrounding populations.<sup>28</sup> Studies of gonorrhoea have also shown localised clustering of cases, and the impact of geo-targeted interventions to these areas.<sup>6</sup> However, empirical and modelling studies of other infectious diseases identified several factors affecting the potential effects of targeting hotspots, including the connectivity between hotspots and other areas, the reproductive numbers of infections in each location, and the timing of interventions.<sup>1,3</sup>

HIV spreads between geographical areas through two mechanisms: when infection is spread between sexual partners from different communities of residence, and when infection is spread by migration of people infected with HIV. Our results suggest the importance of both mechanisms with each accounting for approximately

half of transmissions spanning fishing and inland areas. Migration was common with a quarter of the RCCS population classified as recent in-migrants (moved within 2 years). Previous studies across sub-Saharan Africa have shown that migrants who are HIV-negative are at higher risk of HIV acquisition, and migrants who are HIV-positive are less likely to be virally suppressed.<sup>29</sup> Despite these findings, we did not find that migrants were at a significantly higher risk of onward transmission compared with residents. However, we found that overall, men disproportionately contributed to onward HIV transmission compared with women, and that in particular, the male to female transmission bias was greatest among men who reside (ie, did not in-migrate) in inland communities compared with women who reside in inland communities. This discrepancy in transmission by sex could partly explain why the female to male HIV prevalence ratio exceeds unity throughout sub-Saharan Africa,<sup>30</sup> and emphasises the growing urgency for interventions targeted to men who are HIV-positive.

This study has limitations. First, the RCCS surveys a subset of the inland and Lake Victoria fishing communities in Rakai, Uganda. Although the sampling fraction within our communities was high, our methodological approach and hence the generalisability of our findings rests on the assumption that unobserved transmissions are missing at random within each pairwise combination of the population groups.<sup>31</sup> This assumption means that including a community into the cohort did not depend on the number of HIV transmissions in or out of it, and implies that estimates of viral flow can be obtained by scaling the observed flows between RCCS communities to the populations living in inland and lakeside areas (appendix p 18). This study also did not capture short-term mobility patterns. Notably, around 30% of censused individuals did not participate in the RCCS, primarily because they were travelling for work or school, and we cannot exclude the possibility that omission of this population group might have biased our inferences. Third, we have previously reported on the quality of our deep sequence data, which was poor in some cases,<sup>20</sup> although in sensitivity analyses reported in the appendix (p 21), we found that excluding lower quality reads did not impact study inferences. Fourth, people who were infected with HIV and on ART were excluded from this study potentially biasing our conclusions. However, ART coverage was higher in inland than in fishing communities over our analysis period,<sup>13</sup> and so it is probable that we would have missed more transmissions from inland to fishing communities by excluding participants on ART, most of whom have suppressed viraemia. Fifth, herein we analysed around 300 phylogenetically likely source–recipient pairs, which constitute a limited sample of the actual transmission events that occurred during the observation period. Our estimates were adjusted for observed group differences

in study participation, sequence sampling, and the population surveyed, but it is possible that unmeasured or unknown factors could have influenced our findings. This study is based on a population-based sample from Rakai, Uganda, between August, 2011, and January, 2015, and thus provides a snapshot of the HIV transmission dynamics between high-prevalence fishing communities and low-prevalence inland areas in this relatively recent time period. Thus, the dynamics observed in this study might not be reflective of those in the more distant past or moving forward, particularly with continued scale-up of HIV treatment and declining HIV incidence across the region, and our findings might not be applicable to hotspots in other settings.

In conclusion, we found that the HIV hotspots along Lake Victoria in Uganda, which have been hypothesised to be driving the inland epidemic in east Africa, are not a major source of HIV transmissions to the larger, lower prevalence inland populations. Lake Victoria fishing communities should be targeted for HIV control and treatment because of their high HIV burden; however, interventions in these communities are unlikely to have a broader effect on transmissions that occur inland because of their limited connectivity to inland epidemics and the relatively infrequent flow of infection between coastal and inland communities. This study cautions against equating and stigmatising high prevalence disease hotspots as population groups that drive disease spread elsewhere. More empirical studies are needed to guide modelling efforts aimed at accurately estimating the potential effect of targeted interventions.

#### Contributors

OR, CF, JK, DS, RHG, and MKG conceived the study. TdO, PK, DB, DP, CF, and AG oversaw and did the HIV sequencing. OR, TdO, PK, DP, CW, MH, and CF conceived the phylogenetic analysis. JK, GK, GN, DB, JB, SK, FN, LWC, TCQ, SJR, RS, DS, MJW, RHG, and MKG designed and supervised RCCS survey data collection. SK, SJR, TCQ, OL oversaw HIV testing and specimen collection and storage in the RCCS. LA-D, AH, and TG provided managerial and logistical support, including data tracking, for HIV sequencing. CW, TG, and MKG assembled deep-sequence reads. OR and MH did phylogenetic analyses. OR, SEFS, XX, MKG, and JL conceived and did statistical analyses. OR, RHG, and MKG wrote the first version of the manuscript and all authors reviewed and approved the statistical analysis and final version of the manuscript.

#### PANGEA consortium contributors

Helen Ayles (London School of Hygiene & Tropical Medicine, London, UK), Rory Bowden (University of Oxford, Oxford, UK), Vincent Calvez (Ecole Normale Supérieure de Lyon, Lyon, France), Myron Cohen (University of North Carolina, Chapel Hill, NC, USA), Tulio D'Oliveira (University of KwaZulu-Natal, Durban, KwaZulu-Natal, South Africa), Ann Dennis (University of North Carolina, Chapel Hill, NC, USA), Max Essex (Harvard University, Boston, MA, USA), Sarah Fidler (Imperial College London, London, UK), Dan Frampton (University College London, London, UK), Richard Hayes (London School of Hygiene & Tropical Medicine, London, UK), Josh Herbeck (University of Washington, Seattle, WA, USA), Pontiano Kaleebu (MRC/UVRI Uganda, Kampala, Uganda), Cissy Kityo (Joint Clinical Research Centre, Kampala, Uganda), Jairam Lingappa (University of Washington, Seattle, WA, USA), Vladimir Novitsky (Africa Health Research Institute, Durban, KwaZulu-Natal, South Africa and University College London, London, UK), Nick Paton (Yong Loo Lin School of Medicine, Singapore,

Singapore), Andrew Rambaut (University of Edinburgh, Edinburgh, UK), Janet Seeley (MRC/UVRI Uganda, Kampala, Uganda and London School of Hygiene & Tropical Medicine, London, UK), Deogratus Ssemwanga (MRC/UVRI Uganda, Kampala, Uganda), Frank Tanser (Africa Health Research Institute, Durban, KwaZulu-Natal, South Africa).

**Rakai Health Sciences Program Study Team contributors (all based at Rakai Health Sciences Program/Uganda Virus Research Institute with additional institutions indicated)**

Tom Lutalo, Ronald Galiwango, Fred Makumbi, Nelson K Sewankambo, Aaron Tobian, Dorean Nabukalu, Anthony Ndyababo, Joseph Ssekasanvu (Johns Hopkins School of Public Health, Baltimore, MD, USA), Hadijja Nakawooya, Jessica Nakukumba, Grace N Kigozi, Betty S Nantume, Nampijja Resty, Jedidah Kambasu, Margaret Nalugemwa, Regina Nakabuye, Lawrence Ssebano, Justine Nankinga, Adrian Kayiira, Gorreth Nanfuka, Ruth Ahimbisibwe, Stephen Tomusange, Ronald M Galiwango, Margaret Nakalanzi, Joseph Ouma Otobi, Denis Ankunda, Joseph Lister Ssembatya, John Baptist Ssemanda, Robert Kairania, Emmanuel Kato, Alice Kisakye, James Batte, James Ludigo, Abisagi Nampijja, Steven Watya, Kighoma Nehemia, Margaret Anyokot, Joshua Mwinike, George Kibumba, Paschal Ssebowa, George Mondo, Francis Wasswa, Agnes Nantongo, Rebecca Kakembo, Josephine Galiwango, Geoffrey Ssemango, Andrew D Redd (Johns Hopkins School of Medicine, Baltimore, MD, USA), John Santelli (Columbia University, New York, NY, USA), Caitlin E Kennedy (Johns Hopkins School of Public Health, Baltimore, MD, USA), Jennifer Wagman (University of California San Diego, San Diego, CA, USA).

**Declaration of interests**

OR, LA-D, PK, and CF reports grants from the Bill & Melinda Gates Foundation during the conduct of the study. JL, LWC, and RHG report grants from the National Institutes of Health during the conduct of the study. MJW reports grants from the Gates Foundation and grants from the National Institutes of Health during the conduct of the study and other from Rakai Health Sciences Program with consultancies related to board membership of the Rakai Health Sciences Program, outside the submitted work. All other authors declare no competing interests.

**Data sharing**

The deep-sequence phylogenies and basic individual-level data analysed during the current study are available in the Dryad repository (DOI: 10.5061/dryad.7h46hg2). HIV-1 reads are available on reasonable request through the PANGEA consortium. Please contact project manager Lucie Abeler-Dörner (lucie.abeler-dorner@bdi.ox.ac.uk) for further details. Additional individual-level data are available on reasonable request to RHSP. Code is available on GitHub version 1.1.2 under the GNU General Public License version 3.0.

**Acknowledgments**

This study was presented in part at the International AIDS Society Meeting in Amsterdam, Netherlands, July 26, 2018. This study was supported by the Bill & Melinda Gates Foundation (OPP1175094, OPP1084362), the National Institute of Allergy and Infectious Diseases (R01AI110324, U01AI100031, U01AI075115, R01AI110324, R01AI102939, K01AI125086-01), National Institute of Mental Health (R01MH107275), the National Institute of Child Health and Development (R01HD070769, R01HD050180), the Division of Intramural Research of the National Institute for Allergy and Infectious Diseases, the World Bank, the Doris Duke Charitable Foundation, the Johns Hopkins University Center for AIDS Research (P30AI094189), and the President's Emergency Plan for AIDS Relief through the Centers for Disease Control and Prevention (NU2GGH000817). We also appreciate data management support provided in part by the Office of Cyberinfrastructure and Computational Biology at the National Institute for Allergy and Infectious Diseases. Computations were done at the Imperial College Research Computing Service. The findings and conclusions in this report are those of the authors and do not represent the official position of the funding agencies. We thank the PAGEA-HIV steering committee for their helpful comments on this manuscript, and the RCCS cohort participants and the many staff and investigators who made this study possible.

Editorial note: The *Lancet* Group takes a neutral position with respect to territorial claims in published maps and institutional affiliations.

**References**

- Dowdy DW, Golub JE, Chaisson RE, Saraceni V. Heterogeneity in tuberculosis transmission and the role of geographic hotspots in propagating epidemics. *Proc Natl Acad Sci USA* 2012; **109**: 9557–62.
- Dwyer-Lindgren L, Cork MA, Sliagar A, et al. Mapping HIV prevalence in sub-Saharan Africa between 2000 and 2017. *Nature* 2019; **570**: 189–93.
- Lessler J, Azman AS, McKay HS, Moore SM. What is a hotspot anyway? *Am J Trop Med Hyg* 2017; **96**: 1270–73.
- Woolhouse ME, Dye C, Etard JF, et al. Heterogeneities in the transmission of infectious agents: implications for the design of control programs. *Proc Natl Acad Sci USA* 1997; **94**: 338–42.
- Aral SO, Torrone E, Bernstein K. Geographical targeting to improve progression through the sexually transmitted infection/HIV treatment continua in different populations. *Curr Opin HIV AIDS* 2015; **10**: 477–82.
- Giguère K, Alary M. Targeting core groups for gonorrhoea control: feasibility and impact. *Sex Transm Infect* 2015; **91**: 241–44.
- The Office of the US Global AIDS Coordinator. PEPFAR 3.0 controlling the epidemic: delivering on the promise of an AIDS-free generation. 2014. <https://aidsfree.usaid.gov/resources/prevention-update/editions/december-2014/pepfar-30-controlling-epidemic-delivering> (accessed Dec 22, 2019).
- UNAIDS. 90-90-90: An ambitious treatment target to help end the AIDS epidemic. Joint United Nations Programme on HIV/AIDS. UNAIDS, 2014. [https://www.unaids.org/sites/default/files/media\\_asset/90-90-90\\_en.pdf](https://www.unaids.org/sites/default/files/media_asset/90-90-90_en.pdf) (accessed Dec 22, 2019).
- Fauci AS, Redfield RR, Sigounas G, Weakke MD, Giroir BP. Ending the HIV epidemic: a plan for the United States. *JAMA* 2019; **321**: 844–45.
- Kamali A, Nsubuga RN, Ruzagira E, et al. Heterogeneity of HIV incidence: a comparative analysis between fishing communities and in a neighbouring rural general population, Uganda, and implications for HIV control. *Sex Transm Infect* 2016; **92**: 447–54.
- Jones A, Cremin I, Abdullah F, et al. Transformation of HIV from pandemic to low-endemic levels: a public health approach to combination prevention. *Lancet* 2014; **384**: 272–79.
- Seeley J, Nakiyingi-Miiri J, Kamali A, et al. High HIV incidence and socio-behavioral risk patterns in fishing communities on the shores of Lake Victoria, Uganda. *Sex Transm Dis* 2012; **39**: 433–39.
- Chang LW, Grabowski MK, Ssekubugu R, et al. Heterogeneity of the HIV epidemic in agrarian, trading, and fishing communities in Rakai, Uganda: an observational epidemiological study. *Lancet HIV* 2016; **3**: e388–96.
- Kwena ZA, Njuguna SW, Ssetala A, et al. HIV prevalence, spatial distribution and risk factors for HIV infection in the Kenyan fishing communities of Lake Victoria. *PLoS One* 2019; **14**: e0214360.
- Kagaayi J, Chang LW, Ssempiija V, et al. Impact of combination HIV interventions on HIV incidence in hyperendemic fishing communities in Uganda: a prospective cohort study. *Lancet HIV* 2019; **6**: e680–87.
- Uganda AIDS Commission. National strategic plan for HIV & AIDS. 2014. [http://www.nationalplanningcycles.org/sites/default/files/country\\_docs/Uganda/national\\_strategic\\_plan\\_for\\_hiv\\_aids\\_2011\\_2015.pdf](http://www.nationalplanningcycles.org/sites/default/files/country_docs/Uganda/national_strategic_plan_for_hiv_aids_2011_2015.pdf) (accessed May 6, 2019).
- Uganda AIDS Commission. The Uganda HIV and AIDS country progress report. 2016. [https://www.unaids.org/sites/default/files/country/documents/UGA\\_2017\\_countryreport.pdf](https://www.unaids.org/sites/default/files/country/documents/UGA_2017_countryreport.pdf) (accessed May 6, 2019).
- Grabowski MK, Serwadda DM, Gray RH, et al. HIV prevention efforts and incidence of HIV in Uganda. *N Engl J Med* 2017; **377**: 2154–66.
- Gall A, Ferns B, Morris C, et al. Universal amplification, next-generation sequencing, and assembly of HIV-1 genomes. *J Clin Microbiol* 2012; **50**: 3838–44.
- Ratmann O, Grabowski MK, Hall M, et al. Inferring HIV-1 transmission networks and sources of epidemic spread in Africa with deep-sequence phylogenetic analysis. *Nat Commun* 2019; **10**: 1411.
- Leitner T. Phylogenetics in HIV transmission: taking within-host diversity into account. *Curr Opin HIV AIDS* 2019; **14**: 181–87.

For the PANGEA consortium see <https://019.medsci.ox.ac.uk/>

For code see <https://github.com/BDI-pathogens/phyloscanner>

For the Imperial College Research Computing Service see <https://www.imperial.ac.uk/admin-services/ict/self-service/research-support/rcs/>

- 22 Wymant C, Hall M, Ratmann O, et al. PHYLOSCANNER: inferring transmission from within- and between-host pathogen genetic diversity. *Mol Biol Evol* 2018; **35**: 719–33.
- 23 Grabowski MK, Lessler J, Bazaale J, et al. Migration, hotspots, and dispersal of HIV infection in Rakai, Uganda. *Nature Commun* (in press).
- 24 Ratmann O, Wymant C, Colijn C, et al. HIV-1 full-genome phylogenetics of generalized epidemics in sub-Saharan Africa: impact of missing nucleotide characters in next-generation sequences. *AIDS Res Hum Retroviruses* 2017; **33**: 1083–98.
- 25 Bbosa N, Ssemwanga D, Nsubuga RN, et al. Phylogeography of HIV-1 suggests that Ugandan fishing communities are a sink for, not a source of, virus from general populations. *Sci Rep* 2019; **9**: 1051.
- 26 de Oliveira T, Kharsany AB, Graf T, et al. Transmission networks and risk of HIV infection in KwaZulu-Natal, South Africa: a community-wide phylogenetic study. *Lancet HIV* 2017; **4**: e41–50.
- 27 Anderson S-J, Cherutich P, Kilonzo N, et al. Maximising the effect of combination HIV prevention through prioritisation of the people and places in greatest need: a modelling study. *Lancet* 2014; **384**: 249–56.
- 28 Cuadros D, Graf T, de Oliveira T, et al. Assessing the role of geographic HIV Hot-spots in the spread of the epidemic. Conference on Retroviruses and Opportunistic Infections. 2018. <http://www.croiwebcasts.org/console/player/37086?mediaType=slideVideo&> (accessed Jan 1, 2020).
- 29 Tanser F, Bärnighausen T, Vandormael A, Dobra A. HIV treatment cascade in migrants and mobile populations. *Curr Opin HIV AIDS* 2015; **10**: 430–38.
- 30 Hegdahl HK, Fylkesnes KM, Sandøy IF. Sex Differences in HIV Prevalence Persist over Time: Evidence from 18 Countries in Sub-Saharan Africa. *PLoS One* 2016; **11**: e0148502.
- 31 Gelman A, Carlin JB, Stern HS, Dunson DB, Vehtari A, Rubin DB. *Bayesian Data Analysis*, 3rd edn, Chapman & Hall/CRC texts in statistical science; Boca Raton, USA; 2013.