



HAL
open science

Comparison of Dynamic Monitoring Strategies Based on CD4 Cell Counts in Virally Suppressed, HIV-positive Individuals on Combination Antiretroviral Therapy in High-Income Countries: A Prospective, Observational Study

Ellen C Caniglia, Lauren E Cain, Caroline A Sabin, James M Robins, Roger Logan, Sophie Abgrall, Michael J Mugavero, Sonia Hernández-Díaz, Laurence Meyer, Remonie Seng, et al.

► To cite this version:

Ellen C Caniglia, Lauren E Cain, Caroline A Sabin, James M Robins, Roger Logan, et al.. Comparison of Dynamic Monitoring Strategies Based on CD4 Cell Counts in Virally Suppressed, HIV-positive Individuals on Combination Antiretroviral Therapy in High-Income Countries: A Prospective, Observational Study. *The Lancet HIV*, 2017, 4 (6), pp.e251-e259. 10.1016/S2352-3018(17)30043-7. hal-03777512

HAL Id: hal-03777512

<https://hal.sorbonne-universite.fr/hal-03777512v1>

Submitted on 6 Jun 2023

HAL is a multi-disciplinary open access archive for the deposit and dissemination of scientific research documents, whether they are published or not. The documents may come from teaching and research institutions in France or abroad, or from public or private research centers.

L'archive ouverte pluridisciplinaire **HAL**, est destinée au dépôt et à la diffusion de documents scientifiques de niveau recherche, publiés ou non, émanant des établissements d'enseignement et de recherche français ou étrangers, des laboratoires publics ou privés.



Distributed under a Creative Commons Attribution - NonCommercial - NoDerivatives 4.0 International License



HHS Public Access

Author manuscript

Lancet HIV. Author manuscript; available in PMC 2018 June 01.

Published in final edited form as:

Lancet HIV. 2017 June ; 4(6): e251–e259. doi:10.1016/S2352-3018(17)30043-7.

Comparing dynamic monitoring strategies based on evolving CD4 cell counts in virologically suppressed HIV-positive individuals on cART: a prospective observational study in high-income countries

The HIV-CAUSAL Collaboration and the Center for AIDS Research Network of Integrated Clinical Systems*

Abstract

Background—Clinical guidelines vary with respect to the optimal monitoring frequency of HIV-positive individuals. We compared dynamic monitoring strategies based on evolving CD4 cell counts in virologically suppressed HIV-positive individuals.

This manuscript version is made available under the CC BY-NC-ND 4.0 license.

Correspondence: Ellen C. Caniglia, ScD, Department of Epidemiology, Harvard T.H. Chan School of Public Health, 677 Huntington Avenue, Boston MA 02115, USA, phone: 617-432-1539, ecaniglia@mail.harvard.edu.

*The members of the Writing Committee are listed at the end of the paper.

Writing Committee: Ellen C. Caniglia, Lauren E. Cain, Caroline A. Sabin, James M. Robins, Roger Logan, Sophie Abgrall, Michael J. Mugavero, Sonia Hernández-Díaz, Laurence Meyer, Remonie Seng, Daniel R. Drozd, George R. Seage III, Fabrice Bonnet, Francois Dabis, Richard D. Moore, Peter Reiss, Ard van Sighem, William C. Mathews, Julia del Amo, Santiago Moreno, Steven G. Deeks, Roberto Muga, Stephen L. Boswell, Elena Ferrer, Joseph J. Eron, Sonia Napravnik, Sophie Jose, Andrew Phillips, Amy Justice, Janet Tate, John Gill, Antonio Pacheco, Valdilea G. Veloso, Heiner C. Bucher, Matthias Egger, Hansjakob Furrer, Kholoud Porter, Giota Touloumi, Heidi Crane, Jose M. Miro, Jonathan A. Sterne, Dominique Costagliola, Michael Saag, Miguel A. Hernán

Contributors: ECC and MAH designed the study and wrote the manuscript with significant input from LEC, JMR, GRS, and SHD. CAS, SA, MJM, LM, RS, DRD, FB, FD, RDM, PR, AvS, WCM, JdA, SM, SGD, RM, SLB, EF, JJE, SN, SJ, AP, AJ, JT, JG, AP, VGV, HCB, ME, HF, KP, GT, HC, JMM, DC, and MS contributed to data collection. ECC and RL did statistical analyses. All authors contributed to interpretation of data and revised and approved the manuscript.

Declaration of interests: ECC reports grants from the NIH, during the conduct of the study. JMM reports grants and personal fees from Abbvie, BMS, Medtronic, Merck Novartis, and ViiV Healthcare, outside the submitted work. FB reports personal fees from Gilead, ViiV Healthcare, MSD, BMS, Pierre Fabre, Janssen, and Novartis; and grants from Gilead to the Aquitaine Cohort. MAH reports grants from the NIH, during the conduct of the study. JdA reports research grants awarded from BMS, Gilead and ViiV Healthcare. WM reports grants from the NIH, during the conduct of the study. DD reports personal fees from Gilead Sciences, outside the submitted work; and advisor for the MGH antipsychotics pregnancy registry. RM reports grants from the NIH, during the conduct of the study. SHD reports personal fees from UCB and multiple pharmaceutical companies; and grants from Lilly, Pfizer, and GSK, outside the submitted work. SJ reports grants from Medical Research Council UK, during the conduct of the study; and personal fees from Gilead Sciences Ltd, outside the submitted work. SN reports grants from the NIH, during the conduct of the study. KP reports personal fees from ViiV Healthcare, outside the submitted work. DC reports personal fees and other from Gilead; personal fees from Innavirvax; grants, personal fees and other from Janssen; grants and personal fees from MSD; and grants and other from ViiV Healthcare, outside the submitted work. AJ reports grants from NIH-NIAAA, during the conduct of the study. AP reports personal fees from Gilead, outside the submitted work. CS reports grants from NIH and MRC to fund the UK CHIC study, during the conduct of the study; personal fees from Gilead Sciences, ViiV Healthcare and Janssen-Cilag, outside the submitted work. LEC reports grants from NIH, during the conduct of the study; and other from Takeda Pharmaceuticals, outside the submitted work. JE reports grants from the NIH, during the conduct of the study; grants and personal fees from Bristol-Myers Squibb, Gilead Sciences, Janssen, and ViiV Healthcare; and personal fees from Merck, outside the submitted work. JAS reports grants from UK Medical Research Council, during the conduct of the study. PR reports grants and other from Gilead Sciences, Janssen Pharmaceutical and ViiV Healthcare; and grants from Bristol Myers Squibb and Merck & Co, outside the submitted work.

Publisher's Disclaimer: This is a PDF file of an unedited manuscript that has been accepted for publication. As a service to our customers we are providing this early version of the manuscript. The manuscript will undergo copyediting, typesetting, and review of the resulting proof before it is published in its final citable form. Please note that during the production process errors may be discovered which could affect the content, and all legal disclaimers that apply to the journal pertain.

Methods—We used data from prospective studies of HIV-positive individuals in Europe and the Americas in the HIV-CAUSAL Collaboration and The Center for AIDS Research Network of Integrated Clinical Systems. We compared three monitoring strategies, which differ with respect to the CD4 cell count threshold that is used to measure CD4 cell count and HIV-RNA every 3–6 months (when below the threshold) or every 9–12 months (when above the threshold). The strategies were defined by the thresholds 200, 350, and 500 cells/μl. We estimated hazard ratios of death and of AIDS-defining illness or death, risk ratios of virologic failure, and mean differences in CD4 cell count using inverse probability weighting to adjust for baseline and time-varying confounders.

Findings—47,635 eligible individuals initiated a cART regimen between January, 2000 and November, 2015 and met the eligibility criteria for our study. During follow-up, CD4 cell count and HIV-RNA were measured on average every 4 and 3.8 months, respectively. 464 individuals died (107 in threshold 200 strategy, 157 in threshold 350, and 200 in threshold 500) and 1,091 had AIDS-defining illnesses or died (267 in threshold 200 strategy, 365 in threshold 350, and 459 in threshold 500). Compared with threshold 500, the mortality hazard ratio (95% CI) was 1.05 (0.86, 1.29) for threshold 200 and 1.02 (0.91, 1.14) for threshold 350. Corresponding estimates for death or AIDS-defining illness were 1.08 (0.95, 1.22) and 1.03 (0.96, 1.12), respectively. The respective 24-month risk ratios (95% CI) of virologic failure (HIV-RNA>200 copies/ml) were 2.01 (1.17, 3.43) and 1.24 (0.89, 1.73) and 24-month mean CD4 cell count differences (95% CIs) were 0.4 (–25.5, 26.3) cells/μl and –3.5 (–16.0, 8.9) cells/μl.

Interpretation—Our findings suggest that decreasing monitoring to annually when CD4 cell count>200 cells/μl compared with >500 cells/μl does not worsen the short-term clinical and immunologic outcomes of virologically suppressed HIV-positive individuals, but more frequent virologic monitoring may be necessary to decrease the risk of virologic failure. Further follow-up is needed to establish the long-term safety of these strategies.

Keywords

CD4 cell count; HIV-RNA; monitoring; mortality; observational studies

Introduction

The overall benefits of immunologic and virologic monitoring for the management of HIV-positive individuals are widely accepted, but the frequency with which CD4 cell count and HIV-RNA should be monitored remains unknown.^{1–6}

Clinical guidelines recommend dynamic strategies in which monitoring frequency among virologically suppressed individuals on combined antiretroviral therapy (cART) can be decreased when their CD4 cell count increases. The guidelines, however, vary with regards to the CD4 cell threshold at which this decrease should occur.^{7–10} For example, the European AIDS Clinical Society recommends that CD4 cell monitoring frequency can be decreased among stable individuals with a CD4 cell count>350 cells/μl and HIV-RNA<50 copies/ml.⁹ In comparison, the British HIV Association advises that CD4 monitoring frequency can be decreased in patients with a CD4 cell count>200 cells/μl and HIV-

RNA<50 copies/ml for 1 year. Guidelines for thresholds at which HIV-RNA monitoring frequency can be decreased are generally lacking.^{7–10}

Two randomized trials^{11,12} and several observational studies,^{13–16} including ours,¹⁷ focused on CD4 cell and HIV-RNA monitoring strategies in which monitoring frequency is independent of an individual's time-varying CD4 cell count. While these studies found no clinical harm for annual^{13–17} or biannual^{11,12} monitoring, further follow-up is needed to establish the long-term safety. Moreover, none of these studies evaluated the effectiveness of the dynamic monitoring strategies recommended by the guidelines with respect to virologic and clinical outcomes.

Here, we evaluate the effect of CD4 cell count and HIV-RNA dynamic monitoring strategies on clinical, virologic, and immunologic outcomes in virologically suppressed HIV-positive individuals using observational data from two collaborations of prospective cohort studies from high-income countries. Our analyses study whether information about an individual's time-varying CD4 cell count can provide any additional benefit in determining when monitoring frequency can be decreased.

Methods

Study population

The HIV-CAUSAL Collaboration includes prospective cohort studies from 6 European countries and the Americas.¹⁸ The individual cohort studies are FHDH-ANRSC04 (France), ANRS PRIMO (France), ANRS SEROCO (France), ANRS CO3-Aquitaine (France), UK CHIC (United Kingdom), UK Register of HIV Seroconverters (United Kingdom), ATHENA (the Netherlands), SHCS (Switzerland), PISCIS (Spain), CoRIS/CoRIS-MD (Spain), GEMES (Spain), VACS (United States), AMACS (Greece), IPEC (Brazil) and SAC (Canada). The Center for AIDS Research (CFAR) Network of Integrated Clinical Systems (CNICS) contains clinical data from inpatient and outpatient encounters of HIV-infected individuals at 8 U.S. sites: Case Western Reserve University, Fenway Community Health Clinic, Johns Hopkins University, University of Alabama at Birmingham, University of California at San Diego, University of California at San Francisco, University of North Carolina, and University of Washington.¹⁹ All cohorts included in the HIV-CAUSAL and CNICS Collaborations are based on data collected prospectively for clinical purposes.

Our analysis was restricted to antiretroviral-therapy naïve individuals¹⁸ who initiated a cART regimen in 2000 or later consisting of at least two nucleoside reverse transcriptase inhibitors plus one or more of the following: protease inhibitor, nonnucleoside reverse transcriptase inhibitor, entry/fusion inhibitor, or integrase inhibitor. Regimens consisting of abacavir or tenofovir with two or more additional nucleoside reverse transcriptase inhibitors were also considered cART regimens (2.8% of all eligible regimens). Individuals with confirmed virologic suppression (two consecutive HIV-RNA 200 copies/ml) within 12 months of initiating cART were eligible for inclusion in our study. Baseline was defined as the date of confirmed virologic suppression following cART initiation. Our analysis was further restricted to individuals who met the following criteria at baseline: age 18 years or older and no pregnancy (when information was available), no history of AIDS (defined as

the onset of any Category C AIDS-defining illness),²⁰ and a CD4 cell count measured within the previous three months.

Outcomes

We considered two clinical outcomes: all-cause mortality and a combined end point of AIDS-defining illness or death. The date of death was identified using a combination of national and local mortality registries and clinical records, as described elsewhere,^{18,19} and AIDS-defining illnesses were ascertained by the treating physicians. For each individual, follow-up ended at the event of interest, pregnancy (if known), or the cohort-specific administrative end of follow-up (ranging from December, 2009, to November, 2015), whichever occurred earlier. We also considered virologic failure (HIV-RNA>200 copies/ml) at 24 ± 2 months and mean CD4 cell count over the first 24 months of follow-up as outcomes.

Monitoring strategies

We compared three monitoring strategies, which differ with respect to the CD4 cell count threshold that is used to measure CD4 cell count and HIV-RNA every 3–6 months (when below the threshold) or every 9–12 months (when above the threshold). The three strategies were defined by the thresholds 200, 350 and 500 cells/ μ l (Figure 1) so we refer to the strategies as “threshold 200”, “threshold 350”, and “threshold 500”, respectively. All three strategies further require individuals to be monitored once every 3–6 months when HIV-RNA>200 copies/ml or after diagnosis of an AIDS-defining illness. Each strategy allowed an additional one month before and after each monitoring window (e.g. $3-6 \pm 1$), so the grace period was a total of 5 months.

At baseline, all individuals included in our study had data consistent with each of the three monitoring strategies because an individual’s evolving covariates are unknown at this point. To emulate a hypothetical randomized trial -- a target trial²¹ -- where each eligible individual is randomly assigned to one of the three monitoring strategies, we created an expanded dataset by making 3 exact replicates of each individual (1 per strategy). If and when an individual’s data were no longer consistent with a given strategy, we artificially censored the corresponding replicate at that time. Replicates were censored when they were monitored sooner than indicated by their strategy or when they were not monitored soon enough. Replicates were also censored when a CD4 measurement was recorded without a HIV-RNA measurement, or vice versa, which occurred in fewer than 13% of months in which a measurement was recorded. Examples of the replication and censoring process have been described elsewhere.^{17,22}

Statistical analysis

We fit a pooled logistic regression model to the expanded dataset to estimate the mortality hazard ratio for monitoring strategy (a 3-level categorical variable with “threshold 500” as the reference) conditional on time of follow-up (restricted cubic splines with 4 knots at 1, 6, 12, and 24 months) and the following baseline covariates: sex, CD4 cell count (< 200, 201–350, 351–500, > 501 cells/ μ l), years since HIV diagnosis (<1, 1–4, > 5 years, unknown), race (white, black, other or unknown), geographic origin (N. America/W. Europe, Sub-Saharan

Africa, other, unknown), acquisition group (heterosexual, homosexual or bisexual, injection drug use, other or unknown), calendar year (restricted cubic splines with 3 knots at 2001, 2007 and 2011), age (restricted cubic splines with 3 knots at 25, 39 and 60 years), cohort, and months from cART initiation to virologic suppression (2–4, 5–8, 9). We conducted an identical analysis to estimate the hazard ratio of the combined endpoint of AIDS-defining illness or death. Because the monthly probability of an event is small, the parameters of our pooled logistic model closely approximate the parameters of a Cox proportional hazards model.^{23,24}

To estimate absolute risks for the two clinical outcomes under each monitoring strategy, we fit a pooled logistic regression model like the one described above that also included product terms between monitoring strategy and follow-up time. The model's predicted values were used to estimate 24-month survival and 24-month AIDS-free survival curves for each strategy.

The process of artificial censoring could induce time-varying selection bias. For example, an individual whose CD4 drops from 500 cells/ μ l to 250 cells/ μ l and is subsequently monitored more frequently will be artificially censored from the “threshold 200” strategy. To adjust for the potential selection bias,²⁵ we weighted each replicate at each time by the inverse of the probability of having one's own observed monitoring history. For an explanation of why the probability of monitoring can be used to estimate the probability of remaining uncensored, please see Cain *et al.* 2010.²² To estimate the inverse probability weights, we fit a pooled multinomial regression model for monitoring (a 3-level categorical variable) in the original, unexpanded study population. The model included the previously listed covariates as well as the most recent measurement of the following time-varying covariates: CD4 cell count (restricted cubic splines with 5 knots at 200, 350, 500, 650, and 1000 cells/ μ l), HIV-RNA (200, 201–999, 1,000–9,999, 10,000 copies/ml), diagnosis of an AIDS-defining illness (when the outcome was all-cause mortality), proportion of months of follow-up from baseline to the current observation with a CD4 cell count measurement (restricted cubic splines with 3 knots at 0.2, 0.3 and 0.5) and months since the last CD4 cell count measurement (restricted cubic splines with 3 knots at 1, 4 and 7). Because of the dynamic nature of the strategies under consideration, we computed partially stabilized weights and weights corresponding to monitoring strategies where individuals are monitored with a uniform probability during the grace period (Appendix Page 2).^{17,22} The weights were truncated at the 99th percentile,²⁶ but truncation had little effect on the estimates. Under each strategy, any replicate who did not have a CD4 cell count and HIV-RNA measurement at least every 13 months was artificially censored, and so additional adjustment for loss to follow-up was not necessary.

For the outcome virologic failure, we fit a weighted Poisson regression model²⁷ with the same covariates as above to estimate the risk ratio of virologic failure (HIV-RNA>200 copies/ml) at 24 months for monitoring strategy among those with measurements at 24 ± 2 months. We used additional inverse probability weights to adjust for censoring due to not having an HIV-RNA measurement at 24 ± 2 months. We varied the definitions of virologic suppression and failure and estimated the risk of virologic failure at 18 ± 2 months in secondary analyses. To estimate mean CD4 cell count, we fit a weighted log-linear

regression model for mean CD4 cell count that further included product terms between monitoring strategy and follow-up time. The model's predicted values were used to estimate 24-month mean CD4 cell count curves. We performed several sensitivity analyses, which are described in the Appendix (Page 1). We used nonparametric bootstrapping with 500 samples to compute 95% confidence intervals for all of our estimates.

Role of the funding source

The funders had no role in study design, data collection and analysis, data interpretation, or preparation of the manuscript. The corresponding author had full access to all data in the study and had final responsibility for the decision to submit for publication.

Results

Table 1 shows the baseline characteristics of the 47,635 eligible individuals who initiated a cART regimen between January, 2000 and November, 2015 and met the eligibility criteria for our study. The analyses presented here are based on data pooled in November, 2015. During follow-up, CD4 cell count and HIV-RNA were measured on average every 4 and 3.8 months, respectively, and HIV-RNA was measured in more than 94% of months in which CD4 cell count was measured. In a given month, having CD4 cell count measured was associated with older age, lower CD4 cell counts and higher HIV-RNA in previous months, earlier calendar years, and a history of more frequent monitoring (Appendix Page 3). Among the individuals who had data consistent with at least one monitoring strategy for one complete year, those following the “threshold 500” strategy had higher baseline and current CD4 cell counts, were more likely to be homo/bisexual, and were less likely to have been diagnosed with HIV infection in the previous year, compared with individuals following the other strategies (Table 1). The rate of treatment switching was smaller for those following the “threshold 200” strategy and similar for those following the “threshold 350” strategy, compared with those following the “threshold 500” strategy (Appendix Page 5).

Figure 2 shows the number of uncensored individuals who followed each of the three monitoring strategies over time in the all-cause mortality analysis. Appendix Figure 1 (Page 8) show the proportion of individuals who followed each monitoring strategy over follow-up time with HIV-RNA ≥ 200 copies/ml, without a diagnosis of an AIDS-defining illness, and with CD4 cell count greater than the corresponding strategy's threshold (i.e. monitored every 9–12 months). The proportion of individuals with a CD4 cell count above each strategy's threshold decreased over follow-up time; a large amount of the artificial censoring was due to individuals being monitored more frequently than every 9–12 months.

Death and AIDS-defining illness

During follow-up there were 464 deaths and 1,091 cases of the combined endpoint of AIDS-defining illness or death. On average, each death contributed to 2.2 strategies and each case of AIDS-defining illness or death contributed to 2.3 strategies. Among those with the event of interest, the median (IQR) time from baseline to event was 6 (2,15) months for all-cause mortality and 5 (1,11) months for death or AIDS-defining illness.

The mortality hazard ratio (95% CI) was 1.05 (0.86, 1.29) for “threshold 200” and 1.02 (0.91, 1.14) for “threshold 350”, compared with “threshold 500” (Table 2). Compared with “threshold 500”, the hazard ratios for death or AIDS-defining illness were 1.08 (0.95, 1.22) for “threshold 200” and 1.03 (0.96, 1.12) for “threshold 350”. If we had not adjusted for time-varying confounding, the hazard ratio estimates would have been similar (Appendix Page 6). None of the sensitivity analyses yielded appreciably different results (data not shown).

The estimated 24-month survival (95% CI) was 0.99 (0.99, 1.00) for “threshold 200”, 0.99 (0.99, 0.99) for “threshold 350” and 0.99 (0.99, 0.99) for “threshold 500”. The corresponding estimates for 24-month AIDS-free survival (95% CI) were 0.98 (0.97, 0.99), 0.98 (0.97, 0.98) and 0.98 (0.98, 0.99) (Figure 3).

Virologic failure

295 individuals experience virologic failure (HIV-RNA>200 copies/ml) at 24 ± 2 months. Compared with “threshold 500”, the risk ratio for virologic failure at 24 ± 2 months (95% CI) was 2.01 (1.17, 3.43) for “threshold 200” and 1.24 (0.89, 1.73) for “threshold 350”. The risk ratios at 18 ± 2 months (95% CI) and from alternative definitions of virologic suppression were closer to the null (Appendix Page 7), but the 95% confidence intervals were wide.

CD4 cell count

The mean baseline CD4 cell count was 413 cells/ μ l. At 24 months, the mean CD4 cell count (95% CI) was 504.4 cells/ μ l (446.0, 570.5) for “threshold 200”, 500.5 cells/ μ l (446.2, 561.3) for “threshold 350” and 504.0 cells/ μ l (450.5, 563.9) for “threshold 500”. The 24-month mean CD4 cell count difference (95% CI) was 0.4 (–25.5, 26.3) cells/ μ l for “threshold 200” and –3.5 (–16.0, 8.9) cells/ μ l for “threshold 350”, compared with “threshold 500” (Appendix Page 9). When adjusting only for baseline confounding, the 24-month mean CD4 cell count was larger for “threshold 500” compared with “threshold 200” (533.8 cells/ μ l compared with 486.8 cells/ μ l) (Appendix Page 10). There were no differences in mean CD4 cell count at 24 months between the three strategies when excluding individuals presenting late to care, when excluding intravenous drug users and those with an unknown mode of transmission, and when restricting the analysis to individuals with baseline CD4 cell counts>500 cells/ μ l (data not shown).

Discussion

Our findings suggest that decreasing monitoring of CD4 cell count and HIV-RNA from every 3–6 months to every 9–12 months while CD4 cell count>200 cells/ μ l does not worsen the 2-year clinical and immunologic outcomes of HIV-positive, virologically suppressed individuals on cART without AIDS in high-income countries. Our estimates also suggest that decreasing monitoring frequency when CD4 cell count>200 cells/ μ l compared with when CD4 cell count>500 cells/ μ l results in an increased risk of virologic failure at 24 months of follow-up, but the 95% confidence intervals around these estimates were wide. Because few individuals followed the strategies of interest for extended periods of time, we

were not able to assess clinical, immunologic, and virologic outcomes after 2-years of follow-up.

The individuals following the “threshold 500” strategy were monitored more frequently over follow-up on average and had a higher rate of treatment switching compared with those following the “threshold 200” strategy, even after adjusting for confounding. Thus one potential explanation for the virologic failure finding is that individuals following the “threshold 500” strategy who had virologic failure switched treatment and achieved virologic suppression before 24 months of follow-up.

Some limitations of our study should be noted. Like any other observational study, the validity of our estimates relies on the untestable assumption that the measured covariates were sufficient to adjust for confounding and selection bias. An imbalance of individuals with poor adherence to cART and to clinic visits across the monitoring strategies could lead to bias. For example, physicians might monitor individuals perceived to have lower adherence with greater frequency, and individuals with poor adherence who maintain a suppressed HIV-RNA and CD4 cell count slightly above 200 cells/ μ l will follow the “threshold 200” strategy for longer than the other strategies. Though data on collection of ART prescriptions or more direct adherence measurements were not available in our study, excluding subgroups of individuals hypothesized to have low levels of adherence (those who did not achieve virologic suppression within 8 months of cART initiation) or perceived adherence (intravenous drug users and those with an unknown mode of transmission) did not affect the results. Still, if these sub-group analyses did not adequately exclude individuals with poor adherence, our results could still be biased.

An imbalance of individuals with low CD4 cell counts across the monitoring strategies could also bias the results. Since individuals in our study are monitored frequently over follow-up, regardless of their CD4 cell count, the “threshold 200” strategy has a higher concentration of individuals with CD4 cell count < 200 cells/ μ l than the other strategies. However, the inverse-probability weights function to balance the distribution of baseline CD4 cell count across the strategies.

Our estimates would also be susceptible to bias if individuals monitored more (or less) frequently were individuals at later stages of HIV infection, since these sicker patients would also be at a higher risk of death. However, an analysis that partially reduces this confounding by excluding individuals presenting late to care (initiating cART at a CD4 cell count < 200 cells/ μ l) did not yield appreciably different results. Our estimates could also be confounded if individuals are monitored more frequently after a treatment regimen switch, but an analysis adjusting for time since first treatment switch did not affect our estimates. If individuals with comorbidities visit the clinic more often compared with those who do not our results could also be confounded, but adjustment for time since the last clinic visit did not alter the results. Some residual confounding due to varying practice patterns among clinical centers is possible because our estimates are adjusted for cohort but not for the individual centers within each cohort.

Clinical guidelines discourage CD4 cell count monitoring for individuals with undetectable HIV-RNA and CD4>500 cells/μl for two years.¹⁰ While we could not directly compare strategies where CD4 cell count monitoring is discontinued while HIV-RNA monitoring is maintained (because CD4 cell count and HIV-RNA were usually monitored at the same time in our study), our finding that monitoring frequency can be safely decreased with respect to clinical and immunologic outcomes, but not with respect to virologic outcomes supports this recommendation.

Non-AIDS defining clinical events contribute substantially to morbidity in HIV-positive individuals on successful cART, but were not assessed in this study. While our results support decreasing CD4 cell count and HIV-RNA monitoring in healthy populations, regular clinic visits remain critical to assess adherence, co-morbidities like HCV coinfection¹⁶, and psychosocial needs. Finally, our analysis included individuals initiating cART in 2000 or later, yet it is possible that monitoring frequency could have differential effects over calendar time as cART guidelines and prescribing patterns evolve.

Our results support current guidelines^{7–10} and suggest that the CD4 threshold at which monitoring frequency can be decreased to annually may be as low as 200 cells/μl with respect to 2-year clinical and immunologic outcomes. However, more frequent virologic monitoring may be necessary to reduce the risk of virologic failure. While further research is warranted to obtain more precise effect estimates over longer periods of follow-up, our results may be useful to inform clinical practice.

Supplementary Material

Refer to Web version on PubMed Central for supplementary material.

Acknowledgments

Funding: National Institutes of Health

Funding: This research was supported by NIH grant R01 AI073127; by NIH grant T32 AI007433 from the National Institute of Allergy and Infectious Diseases; and by the CFAR Network of Integrated Clinical Systems-CNICS, an NIH funded program (R24 AI067039) that was made possible by the National Institute of Allergy and Infectious Diseases (NIAID) and the National Heart, Lung and Blood Institute (NHLBI). Its contents are solely the responsibility of the authors and do not necessarily represent the official views of the NIH. JMM received a personal intensification research grant #INT15/00168 during 2016 from Instituto de Salud Carlos III, Madrid, Spain.

References

1. Mugenyi P, Walker AS, Hakim J, et al. Routine versus clinically driven laboratory monitoring of HIV antiretroviral therapy in Africa (DART): a randomised non-inferiority trial. *Lancet*. 2010; 375(9709):123–31. [PubMed: 20004464]
2. Kekitiinwa A, Cook A, Nathoo K, et al. Routine versus clinically driven laboratory monitoring and first-line antiretroviral therapy strategies in African children with HIV (ARROW): a 5-year open-label randomised factorial trial. *Lancet*. 2013; 381(9875):1391–403. [PubMed: 23473847]
3. Mermin J, Ekwaru JP, Were W, et al. Utility of routine viral load, CD4 cell count, and clinical monitoring among adults with HIV receiving antiretroviral therapy in Uganda: randomised trial. *BMJ (Clinical research ed)*. 2011; 343:d6792.

4. Chang LW, Harris J, Humphreys E. Optimal monitoring strategies for guiding when to switch first-line antiretroviral therapy regimens for treatment failure in adults and adolescents living with HIV in low-resource settings. The Cochrane database of systematic reviews. 2010; (4):Cd008494. [PubMed: 20393969]
5. Kahn JG, Marseille E, Moore D, et al. CD4 cell count and viral load monitoring in patients undergoing antiretroviral therapy in Uganda: cost effectiveness study. *BMJ (Clinical research ed)*. 2011; 343:d6884.
6. Laurent C, Kouanfack C, Laborde-Balen G, et al. Monitoring of HIV viral loads, CD4 cell counts, and clinical assessments versus clinical monitoring alone for antiretroviral therapy in rural district hospitals in Cameroon (Stratall ANRS 12110/ESTHER): a randomised non-inferiority trial. *The Lancet infectious diseases*. 2011; 11(11):825–33. [PubMed: 21831714]
7. World Health Organization. Antiretroviral Therapy for HIV Infection in Adults and Adolescents: Recommendations for a Public Health Approach: 2010 Revision. Geneva: World Health Organization; 2010. WHO Guidelines Approved by the Guidelines Review Committee.
8. Asboe D, Aitken C, Boffito M, et al. British HIV Association guidelines for the routine investigation and monitoring of adult HIV-1-infected individuals 2011. *HIV medicine*. 2012; 13(1):1–44.
9. European AIDS Clinical Society. [accessed June 15 2016] EACS Guidelines Version 8.0. Jun. 2016 http://www.eacsociety.org/files/guidelines_8.0-english-revised_20160610.pdf
10. Department of Health and Human Services. [accessed June 15 2016] Guidelines for the Use of Antiretroviral Agents in HIV-1-Infected Adults and Adolescents. Jan 28. 2016 <http://aidsinfo.nih.gov/contentfiles/lvguidelines/adultandadolescentgl.pdf>
11. Weissman S, Singh S, Dykema S, Parker RD. Randomized Controlled Trial: 4 Month versus 6 Month Monitoring of HIV-infected Patients on Highly Active Antiretroviral Therapy. *Journal of community health*. 2016; 41(5):1044–8. [PubMed: 27052961]
12. Haubrich RH, Currier JS, Forthal DN, et al. A randomized study of the utility of human immunodeficiency virus RNA measurement for the management of antiretroviral therapy. *Clinical infectious diseases: an official publication of the Infectious Diseases Society of America*. 2001; 33(7):1060–8. [PubMed: 11528581]
13. Reekie J, Mocroft A, Sambatakou H, et al. Does less frequent routine monitoring of patients on a stable, fully suppressed cART regimen lead to an increased risk of treatment failure? *AIDS (London, England)*. 2008; 22(17):2381–90.
14. Chaiwarith R, Preparattanapan J, Nuntachit N, Kotarathitithum W, Sirisanthana T, Supparatpinyo K. Impact of the frequency of plasma HIV-1 RNA monitoring on the outcome of antiretroviral therapy. *Current HIV research*. 2011; 9(2):82–7. [PubMed: 21361862]
15. Bryant L, Smith N, Keiser P. A model for reduced HIV-1 viral load monitoring in resource-limited settings. *Journal of the International Association of Providers of AIDS Care*. 2013; 12(1):67–71. [PubMed: 22553318]
16. Nicolas D, Esteve A, Cuadros A, et al. Safe Reduction in CD4 Cell Count Monitoring in Stable, Virologically Suppressed Patients With HIV Infection or HIV/Hepatitis C Virus Coinfection. *Clinical infectious diseases: an official publication of the Infectious Diseases Society of America*. 2016; 62(12):1578–85. [PubMed: 27126346]
17. Caniglia EC, Sabin C, Robins JM, Logan R, Cain LE, et al. When to monitor CD4 cell count and HIV RNA to reduce mortality and AIDS-defining illness in virologically suppressed HIV-positive persons on antiretroviral therapy in high-income countries: a prospective observational study. *Journal of acquired immune deficiency syndromes (1999)*. 2016
18. Ray M, Logan R, Sterne JA, et al. The effect of combined antiretroviral therapy on the overall mortality of HIV-infected individuals. *AIDS (London, England)*. 2010; 24(1):123–37.
19. Kitahata MM, Rodriguez B, Haubrich R, et al. Cohort profile: the Centers for AIDS Research Network of Integrated Clinical Systems. *International journal of epidemiology*. 2008; 37(5):948–55. [PubMed: 18263650]
20. Centers for Disease Control and Prevention. 1993 revised classification system for HIV infection and expanded surveillance case definition for AIDS among adolescents and adults. *MMWR Morbidity and Mortality Weekly Report*. 1992:1–9.

21. Hernan MA, Robins JM. Using Big Data to Emulate a Target Trial When a Randomized Trial Is Not Available. *American journal of epidemiology*. 2016; 183(8):758–64. [PubMed: 26994063]
22. Cain LE, Robins JM, Lanoy E, Logan R, Costagliola D, Hernan MA. When to start treatment? A systematic approach to the comparison of dynamic regimes using observational data. *The international journal of biostatistics*. 2010; 6(2) Article 18.
23. D'Agostino RB, Lee ML, Belanger AJ, Cupples LA, Anderson K, Kannel WB. Relation of pooled logistic regression to time dependent Cox regression analysis: the Framingham Heart Study. *Statistics in medicine*. 1990; 9(12):1501–15. [PubMed: 2281238]
24. Thompson WA Jr. On the treatment of grouped observations in life studies. *Biometrics*. 1977; 33(3):463–70. [PubMed: 911970]
25. Hernan MA, Lanoy E, Costagliola D, Robins JM. Comparison of dynamic treatment regimes via inverse probability weighting. *Basic & clinical pharmacology & toxicology*. 2006; 98(3):237–42. [PubMed: 16611197]
26. Cole SR, Hernan MA. Constructing inverse probability weights for marginal structural models. *American journal of epidemiology*. 2008; 168(6):656–64. [PubMed: 18682488]
27. Spiegelman D, Hertzmark E. Easy SAS calculations for risk or prevalence ratios and differences. *American journal of epidemiology*. 2005; 162(3):199–200. [PubMed: 15987728]

Research in context panel

Evidence before this study

We searched PubMed and reports from WHO, the Department of Health and Human Services, the European AIDS Clinical Society, and the British HIV Association using combinations of the search terms “CD4 cell count”, “viral load”, “antiretroviral therapy”, and “monitoring” for articles published in English up to January 1, 2017. Two randomized trials and several observational studies have addressed the question of when to monitor CD4 cell count and HIV-RNA in HIV-positive individuals on combined antiretroviral therapy (cART). The results from the randomized trials were conflicting with respect to the main virologic outcome, but the studies defined the monitoring strategies, eligibility criteria, and follow-up differently. Both the randomized trials and the observational studies did not assess clinical endpoints, had short follow-up, and did not compare dynamic monitoring strategies in which monitoring frequency depends on an individual’s time-varying CD4 cell count.

Added value of this study

We have used observational data from two collaborations of prospective cohort studies from Europe and the Americas to compare the effectiveness of three dynamic monitoring strategies applied to virologically suppressed HIV-positive individuals. The three strategies differ with respect to the CD4 cell count threshold that is used to measure CD4 cell count and HIV-RNA every 3–6 months (when below the threshold) or every 9–12 months (when above the threshold). The threshold was 200 cells/ μ l in the first strategy, 350 cells/ μ l in the second strategy, and 500 cells/ μ l in the third strategy. In this population we found no effect of the monitoring strategies on survival, AIDS-free survival, and 2-year mean CD4 cell count, suggesting that decreasing monitoring to annually when CD4 cell count >200 cells/ μ l compared with >500 cells/ μ l does not worsen the short-term clinical and immunologic outcomes of virologically suppressed HIV-positive individuals. However, we found that decreasing monitoring frequency when CD4 cell count >200 cells/ μ l compared with >500 cells/ μ l results in an increased risk of virologic failure at 2 years.

Implications of all the available evidence

In virologically suppressed individuals on cART in resource-rich settings, the CD4 threshold at which monitoring frequency can be decreased to annually may be as low as 200 cells/ μ l with respect to clinical and immunologic outcomes. However, more frequent virologic monitoring may be necessary to reduce the risk of virologic failure. Further research is warranted to obtain more precise effect estimates over longer periods of follow-up, and to determine the generalizability of these results to resource-limited settings.

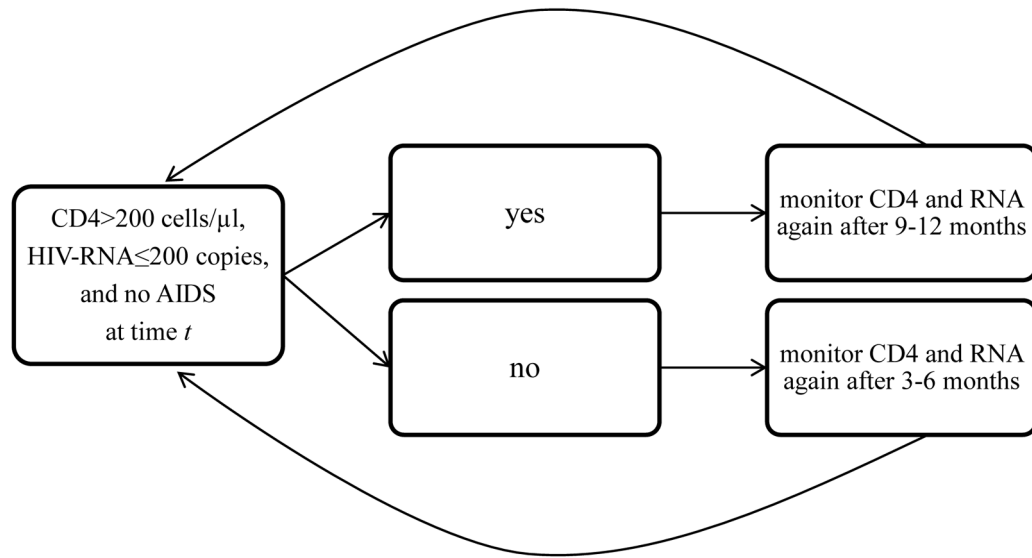


Figure 1.

Schematic of one of the three dynamic monitoring strategies under the CD4 cell count threshold 200 cells/μl, CNICS and HIV-CAUSAL Collaboration 2000–2015.

The other two strategies are identical except that the CD4 cell count threshold is 350 cells/μl in the 2nd strategy and 500 cells/μl in the 3rd strategy.

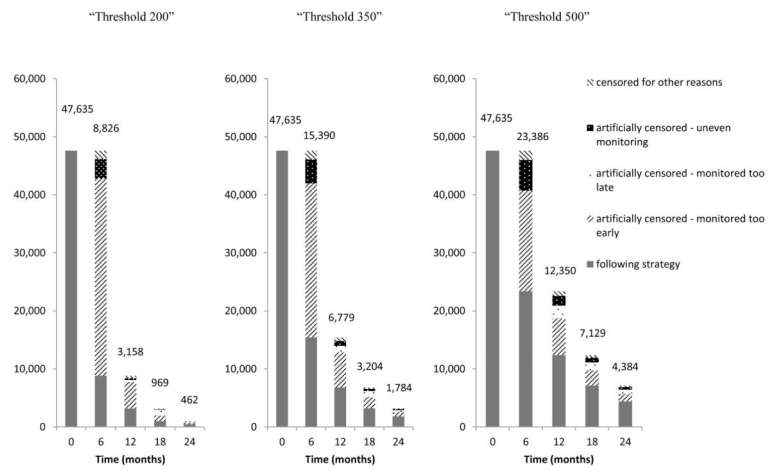


Figure 2. Number of individuals following each monitoring strategy over follow-up, CNICS and HIV-CAUSAL Collaboration 2000–2015

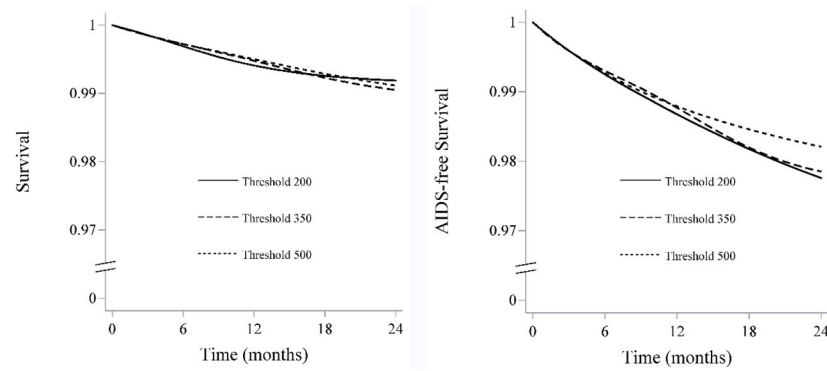


Figure 3.

24-month survival and AIDS-free survival curves by monitoring strategy, CNICS and HIV-CAUSAL Collaboration 2000–2015

The curves are standardized by the baseline covariates: sex, CD4 cell count (< 200, 201–350, 351–500, > 501 cells/ μ l), years since HIV diagnosis (<1, 1–4, 5 years, unknown), race (white, black, other or unknown), geographic origin (N. America/W. Europe, Sub-Saharan Africa, other, unknown), acquisition group (heterosexual, homosexual or bisexual, injection drug use, other or unknown), calendar year (restricted cubic splines with 3 knots at 2001, 2007 and 2011), age (restricted cubic splines with 3 knots at 25, 39 and 60 years), cohort, and months from cART initiation to virologic suppression (2–4, 5–8, 9). We adjusted for potential selection bias induced by artificial censoring using inverse probability weighting.

Table 1

Characteristics of the individuals at baseline and at 14 months of follow-up, CNICS and HIV-CAUSAL Collaboration 2000–2015

Baseline characteristic	Individuals at baseline (n=47,635)	Individuals remaining at 14 months of follow-up (n=16,325)		
		Persons, n (%)		
		“Threshold 200” (n=1,676)	“Threshold 350” (n=4,824)	“Threshold 500” (n=9,825)
CD4 cell count (cells/μl)				
200	6,533 (13.7)	1,001 (59.6)	2,282 (46.7)	2,596 (26.0)
200 to < 350	13,631 (28.6)	234 (13.9)	1,974 (40.4)	4,713 (47.2)
350 to < 500	14,116 (29.6)	230 (13.7)	412 (8.4)	2,219 (22.2)
>500	13,355 (28.0)	214 (12.8)	222 (4.5)	450 (4.5)
Mean, value	413	245	231	284
Sex				
Male	38,399 (80.6)	1,370 (81.6)	3,867 (79.1)	7,948 (79.7)
Female	9,236 (19.4)	309 (18.4)	1,023 (20.9)	2,030 (20.3)
Race				
White	12,607 (26.5)	309 (18.4)	931 (19.0)	2,057 (20.6)
Black	4,595 (9.7)	168 (10.0)	568 (11.6)	980 (9.8)
Other/unknown	30,433 (63.9)	1,202 (71.6)	3,391 (69.4)	6,941 (69.6)
Age (years)				
<35	16,240 (34.1)	491 (29.2)	1,313 (26.9)	2,889 (29.0)
35–50	22,663 (47.6)	791 (47.1)	2,446 (50.0)	4,945 (49.6)
>50	8,732 (18.3)	397 (23.7)	1,131 (23.1)	2,144 (21.5)
Origin				
North America or Western Europe	29,043 (61.0)	1,134 (67.5)	3,015 (61.7)	6,219 (62.3)
Sub-Saharan Africa	3,325 (7.0)	128 (7.6)	430 (8.8)	839 (8.4)
Other	3,462 (7.3)	118 (7.0)	358 (7.3)	773 (7.8)
Unknown	11,805 (24.8)	299 (17.8)	1,087 (22.2)	2,147 (21.5)
Acquisition group				
Heterosexual	15,122 (31.8)	613 (36.5)	1,839 (37.6)	3,513 (35.2)
Homo/bisexual	23,370 (49.1)	558 (33.2)	1,715 (35.1)	4,152 (41.6)
Injection drug User	1,997 (4.2)	135 (8.0)	327 (6.7)	522 (5.2)
Other/unknown	7,146 (15.0)	373 (22.2)	1,009 (20.6)	1,791 (18.0)
Calendar year				
2000–2002	4,390 (9.2)	217 (12.9)	639 (13.1)	1,123 (11.3)
2003–2005	8,334 (17.5)	369 (22.0)	1,215 (24.9)	2,312 (23.2)
2006–2008	11,529 (24.2)	436 (26.0)	1,450 (29.7)	3,054 (30.6)
2009	23,382 (49.1)	657 (39.1)	1,586 (32.4)	3,489 (35.0)

	Individuals at baseline (n=47,635)	Individuals remaining at 14 months of follow-up (n=16,325)		
		Persons, n (%)		
		“Threshold 200” (n=1,676)	“Threshold 350” (n=4,824)	“Threshold 500” (n=9,825)
Months to suppression				
2–4	16,227 (34.1)	488 (29.1)	1,443 (29.5)	3,035 (30.4)
5–8	22,676 (47.6)	808 (48.1)	2,480 (50.7)	5,106 (51.2)
9–12	8,732 (18.3)	383 (22.8)	967 (19.8)	1,837 (18.4)
Mean, value	5.9	6.4	6.2	6.1
Years since HIV diagnosis				
<1	15,602 (32.8)	695 (41.4)	2,114 (43.2)	3,692 (37.0)
1– < 5	17,114 (35.9)	439 (26.2)	1,204 (24.6)	3,118 (31.3)
5 or more	5,716 (12.0)	180 (10.7)	629 (12.9)	1,343 (13.5)
unknown	9,203 (19.3)	365 (21.7)	943 (19.3)	1,825 (18.3)
Time-varying characteristic (measured at 14 months)				
Most recent CD4 cell count (cells/μl)				
<200	--	700 (41.7)	938 (19.2)	964 (9.7)
200 to < 350	--	426 (25.4)	2,438 (49.9)	3,341 (33.5)
350 to < 500	--	208 (12.4)	1,066 (21.8)	3,898 (39.1)
500	--	345 (20.6)	448 (9.2)	1,775 (17.8)
Mean, value	--	324	316	379
Most recent HIV-RNA (copies/ml)				
200	--	1,525 (90.8)	4,607 (94.2)	9,511 (95.3)
201–999	--	45 (2.7)	112 (2.3)	204 (2.0)
1,000–9,999	--	40 (2.4)	66 (1.4)	110 (1.1)
10,000	--	69 (4.1)	105 (2.2)	153 (1.5)
Mean, value	--	5,856	2,685	1,847

Table 2

Clinical and virologic outcomes by monitoring strategy, CNICS and HIV-CAUSAL Collaboration 2000–2015

Outcome and monitoring strategy	Outcomes, cases	Person-months	Hazard ratios* (95% CI)
All-cause mortality			
“Threshold 200”	107	249,597	1.05 (0.86, 1.29)
“Threshold 350”	157	340,428	1.02 (0.91, 1.14)
“Threshold 500”	200	490,713	1.00 (reference)
AIDS-defining illness or death			
“Threshold 200”	267	247,816	1.08 (0.95, 1.22)
“Threshold 350”	365	337,823	1.03 (0.96, 1.12)
“Threshold 500”	459	487,232	1.00 (reference)
Virologic failure (RNA>200) at 24 months	No. failed^a		Risk ratios* (95% CI)
“Threshold 200”	35		2.01 (1.17, 3.43)
“Threshold 350”	89		1.24 (0.89, 1.73)
“Threshold 500”	171		1.00 (reference)

^aBased on 405, 1,610, and 3,962 individuals with HIV-RNA measurements at 24 ± 2 months following the “threshold 200”, “threshold 350” and “threshold 500” strategies, respectively.

* Adjusted for the baseline covariates (sex, age, race, geographic origin, acquisition group, CD4 cell count, HIV-RNA, calendar year, years since HIV diagnosis, cohort, and months from cART initiation to virologic suppression). We adjusted for potential selection bias induced by artificial censoring using inverse probability weighting.