



HAL
open science

Contribution of Liver Stiffness Measurement by Vibration-Controlled Transient Elastography to Outcome Prediction in Primary Biliary Cholangitis

Christophe Corpechot, Fabrice Carrat, Farid Gaouar, Frédéric Chau, Gideon Hirschfield, Aliya Gulamhusein, Aldo Montano-Loza, Ellina Lytvyak, Christoph Schramm, Albert Pares, et al.

► To cite this version:

Christophe Corpechot, Fabrice Carrat, Farid Gaouar, Frédéric Chau, Gideon Hirschfield, et al.. Contribution of Liver Stiffness Measurement by Vibration-Controlled Transient Elastography to Outcome Prediction in Primary Biliary Cholangitis. *Journal of Hepatology*, 2022, 77 (6), pp.1545-1553. 10.1016/j.jhep.2022.06.017 . hal-03786463

HAL Id: hal-03786463

<https://hal.sorbonne-universite.fr/hal-03786463>

Submitted on 23 Sep 2022

HAL is a multi-disciplinary open access archive for the deposit and dissemination of scientific research documents, whether they are published or not. The documents may come from teaching and research institutions in France or abroad, or from public or private research centers.

L'archive ouverte pluridisciplinaire **HAL**, est destinée au dépôt et à la diffusion de documents scientifiques de niveau recherche, publiés ou non, émanant des établissements d'enseignement et de recherche français ou étrangers, des laboratoires publics ou privés.

Contribution of Liver Stiffness Measurement by Vibration-Controlled Transient Elastography to Outcome Prediction in Primary Biliary Cholangitis

Christophe Corpechot¹, Fabrice Carrat², Farid Gaouar¹, Frederic Chau², Gideon Hirschfield³, Aliya Gulamhusein³, Aldo J. Montano-Loza⁴, Ellina Lytvyak⁴, Christoph Schramm⁵, Albert Pares⁶, Ignasi Olivas⁶, John E. Eaton⁷, Karim T. Osman⁷, George Dalekos⁸, Nikolaos Gatselis⁸, Frederik Nevens⁹, Nora Cazzagon¹⁰, Alessandra Zago¹⁰, Francesco Paolo Russo¹⁰, Nadir Abbas¹¹, Palak Trivedi¹¹, Douglas Thorburn¹², Francesca Saffioti¹², Laszlo Barkai¹², Davide Roccarina¹², Vicenza Calvaruso¹³, Anna Fichera¹³, Adèle Delamarre¹⁴, Esli Medina-Morales¹⁵, Alan Bonder¹⁵, Vilas Patwardhan¹⁵, Cristina Rigamonti¹⁶, Marco Carbone¹⁷, Pietro Invernizzi¹⁷, Laura Cristoferi¹⁷, Adriaan van der Meer¹⁸, Rozanne de Veer¹⁸, Ehud Zigmond¹⁹, Eyal Yehezkel¹⁹, Andreas E. Kremer²⁰, Ansgar Deibel²⁰, Jérôme Dumortier²¹, Tony Bruns²², Karsten Große²², Georges-Philippe Pageaux²³, Aaron Wetten²⁴, Jessica Dyson²⁴, David Jones²⁴, Olivier Chazouillères¹, Bettina Hansen³, Victor de Lédinghen¹⁴, on behalf of the Global & ERN Rare-Liver PBC Study Groups

(1) Reference Center for Inflammatory Biliary Diseases and Autoimmune Hepatitis, European Reference Network on Hepatological Diseases (ERN Rare-Liver), Saint-Antoine Hospital, Assistance Publique - Hôpitaux de Paris; Inserm UMR_S938, Saint-Antoine Research Center, Sorbonne University, Paris, France; (2) Public Health Unit, Saint-Antoine Hospital, Assistance Publique – Hôpitaux de Paris; Pierre Louis Institute of Epidemiology and Public Health, Sorbonne University, Paris, France; (3) Toronto Centre for Liver Disease, University Health Network, University of Toronto, Toronto, Canada; (4) Division of Gastroenterology and Liver Unit, University of Alberta, Edmonton, Canada; (5) Department of Medicine I and Martin Zeitz

Center for Rare Diseases, European Reference Network on Hepatological Diseases (ERN Rare-Liver), University Medical Center Hamburg–Eppendorf, Hamburg, Germany; (6) Liver Unit, Hospital Clínic, University of Barcelona, The August Pi i Sunyer Biomedical Research Institute, Biomedical Research Networking Center in Hepatic and Digestive Diseases, European Reference Network on Hepatological Diseases (ERN Rare-Liver), Barcelona, Spain; (7) Division of Gastroenterology and Hepatology, Mayo Clinic, Rochester, USA; (8) Department of Medicine and Research Laboratory of Internal Medicine, National Expertise Center of Greece in Autoimmune Liver Diseases, European Reference Network on Hepatological Diseases (ERN Rare-Liver), General University Hospital, Larissa, Greece; (9) Division of Hepatology and Liver Transplantation, European Reference Network on Hepatological Diseases (ERN Rare-Liver), University Hospitals KU, Leuven, Belgium; (10) Department of Surgery, Oncology and Gastroenterology, European Reference Network on Hepatological Diseases (ERN Rare-Liver), University of Padova, Padova, Italy; (11) Birmingham Biomedical Research Centre, University Hospitals Birmingham NHS Foundation Trust, Birmingham, United Kingdom; (12) University College London Institute for Liver and Digestive Health, Royal Free Hospital, London, United Kingdom; (13) Section of Gastroenterology and Hepatology, PROMISE, University of Palermo, Palermo, Italy; (14) Department of Hepatology, University Hospitals of Bordeaux, Pessac, France; (15) Department of Medicine, Division of Gastroenterology, Beth Israel Deaconess Medical Center, Boston, USA; (16) Department of Internal Medicine, Università del Piemonte Orientale, Novara, Italy; (17) Division of Gastroenterology, Center for Autoimmune Liver Diseases, Department of Medicine and Surgery, European Reference Network on Hepatological Diseases (ERN Rare-Liver), University of Milano-Bicocca, Monza, Italy; (18) Department of Gastroenterology and Hepatology, Erasmus University Medical Center, Rotterdam, The Netherlands; (19) The Research Center for Digestive Tract and Liver Diseases,

1
2
3
4
5
6
7
8
9
10
11
12
13
14
15
16
17
18
19
20
21
22
23
24
25
26
27
28
29
30
31
32
33
34
35
36
37
38
39
40
41
42
43
44
45
46
47
48
49
50
51
52
53
54
55
56
57
58
59
60
61
62
63
64
65

Tel Aviv Sourasky Medical Center, Tel Aviv, Israel; (20) Department of Gastroenterology and Hepatology, University Hospital Zürich, Zürich, Switzerland; (21) Department of Gastroenterology and Hepatology, Edouard Herriot Hospital, Hospices Civils de Lyon, Claude Bernard University, Lyon, France; (22) Department of Medicine III, University Hospital RWTH Aachen, Aachen, Germany; (23) Department of Hepatology and Liver Transplantation, University Hospital, Montpellier, France; (24) Department of Hepatology and Liver Transplantation, Newcastle upon Tyne Hospitals, Newcastle University, United Kingdom.

Running title: Prognostic value of liver stiffness in PBC

Key words: PBC; FibroScan; Mortality; Transplantation; Prognosis.

Summary word count: 270

Manuscript word count (excluding abstract, references, and figure legends): 3610

Number of references: 40

Number of Tables: 3

Number of Figures: 5

Supplementary Tables (Appendix): 7

Supplementary Figures (Appendix): 2

Financial support: No study funding.

Disclosures: Dr. Corpechot reports receiving grants from Arrow and Intercept France, consulting fees from Intercept France, Inventiva Pharma, Cymabay and Genkyotex, and fees for teaching from Intercept France and GlaxoSmithKline France; Dr. Chazouillères, receiving grant support from Aptalis, fees for teaching from Mayoly Spindler, consulting fees from

1 Genfit, and fees for teaching and consulting fees from Intercept; Dr. Schramm, receiving
2 lecture fees from Falk Pharma; Dr. Dumortier, receiving consulting and teaching fees from
3 Intercept France; Dr. Parés, receiving grant funding, speaking fees, and advisory board fees
4 from Intercept, advisory board fees and speaking fees from Novartis, and speaking fees from
5 CymaBay and Inova Diagnostics; Dr. Bruns reports receiving advisory board fees from
6 Intercept, Grifols and Sobi and receiving speaking fees from Falk Foundation, Abbvie, CSL
7 Behring, Intercept, Merck and Gilead. No other potential conflict of interest relevant to this
8 article was reported.
9
10
11
12
13
14
15
16
17
18
19
20
21
22

23 **Authorship statement:**

24 Dr. C. Corpechot is acting as the submission's guarantor.

25
26 Authors contributions: CC, study co-designer, coordinating investigator, data acquisition, data
27 analysis and interpretation, drafting manuscript; FC: statistical analysis, data interpretation,
28 critical revision; VL, study co-designer, data acquisition, critical revision; Remaining authors:
29 data acquisition, critical revision. All authors approved the final version of the manuscript.
30
31
32
33
34
35
36
37
38
39
40

41 **Data availability statement:** The dataset generated during this study is available from the
42 corresponding author upon reasonable request.
43
44
45
46
47
48

49 **Corresponding author:**

50
51 Christophe Corpechot, MD. Reference center for inflammatory biliary diseases and
52 autoimmune hepatitis, Saint-Antoine Hospital, Assistance Publique – Hôpitaux de Paris;
53 Inserm UMR_S938, Saint-Antoine Research Center, Sorbonne University; 184 rue du faubourg
54 Saint-Antoine, 75571 Paris, Cedex 12, France. Email: christophe.corpechot@aphp.fr.
55
56
57
58
59
60
61
62
63
64
65

ABSTRACT

Background & Aims

Liver stiffness measurement (LSM) by vibration-controlled transient elastography (VCTE) was shown to predict outcomes of primary biliary cholangitis (PBC) in small-size studies. We aimed to validate the prognostic value of LSM in a large cohort study.

Methods

We performed an international, multicentre, retrospective follow-up study of 3985 patients with PBC seen at 23 centres in 12 countries. Eligibility criteria included at least one reliable LSM by VCTE and a follow-up ≥ 1 year. Independent derivation (n=2740) and validation (n=568) cohorts were built. The primary endpoint was time to poor clinical outcomes defined as liver-related complications, liver transplantation, or death. Hazard ratios (HRs) with confidence intervals (CIs) were determined using a time-dependent multivariable Cox regression analysis.

Results

LSM was independently associated with poor clinical outcomes in the derivation (5324 LSMs, mean follow-up 5.0 ± 3.1 yrs.) and validation (1470 LSMs, mean follow-up 5.0 ± 2.8 yrs.) cohorts: adjusted HRs (95%CI) per additional kPa were 1.040 (1.026–1.054) and 1.042 (1.029–1.056), respectively ($p < 0.0001$ for both). Adjusted C-statistics (95%CI) at baseline were 0.83 (0.79–0.87) and 0.92 (0.89–0.95), respectively. Between 5 and 30 kPa, the log-HR increased as a monotonic function of LSM. The predictive value of LSM was stable in time. LSM improved the prognostic ability of biochemical response criteria, fibrosis scores, and prognostic scores. The 8-kPa and 15-kPa cut-offs optimally separated low, medium, and high-risk groups. Forty percent of patients were at medium to high risk according to LSM.

Conclusions

LSM by VCTE is a major, independent, validated predictor of PBC outcome. Its value as a surrogate endpoint for clinical benefit in PBC should be considered.

1
2
3
4
5
6
7
8
9
10
11
12
13
14
15
16
17
18
19
20
21
22
23
24
25
26
27
28
29
30
31
32
33
34
35
36
37
38
39
40
41
42
43
44
45
46
47
48
49
50
51
52
53
54
55
56
57
58
59
60
61
62
63
64
65

HIGHLIGHTS

- Although recommended by clinical practice guidelines for the assessment and monitoring of primary biliary cholangitis (PBC), liver stiffness measurement (LSM) by vibration-controlled transient elastography (VCTE) has not yet been validated as a relevant predictive marker of poor clinical outcome in this disease.
- In this large international study of LSM by VCTE in PBC (> 3,000 patients), LSM improved prediction of survival beyond established biochemical response criteria and prognostic scores and its prognostic value was externally validated.
- The thresholds of 8 kPa and 15 kPa optimally discriminated patients into low, medium, and high-risk groups. Forty percent of patients were at medium to high risk of poor clinical outcomes according to these thresholds.
- LSM by VCTE is a major, validated prognostic marker of PBC. Whether it can be used in trials as a surrogate endpoint for clinical benefit should be considered.

LAY SUMMARY

1
2 Serum levels of bilirubin and alkaline phosphatase are the only surrogate markers approved
3
4 by regulatory authorities to assess patients with PBC in therapy trials. Liver histology has been
5
6 shown to improve prediction of survival beyond these markers but liver biopsy is a potentially
7
8 harmful, invasive procedure and a serious obstacle to clinical trial recruitment. In the present
9
10 large, international retrospective cohort study, liver stiffness assessed by vibration-controlled
11
12 transient elastography was validated as one of the strongest predictive factors of poor clinical
13
14 outcome in PBC and was shown to improve the prognostic ability of established biochemical
15
16 markers of treatment response. Studies to evaluate the prognostic impact of LSM changes
17
18 over time are needed to determine whether LSM can be used as a new surrogate end point
19
20 for PBC.
21
22
23
24
25
26
27
28
29
30
31
32
33
34
35
36
37
38
39
40
41
42
43
44
45
46
47
48
49
50
51
52
53
54
55
56
57
58
59
60
61
62
63
64
65

ABBREVIATIONS

1
2 ALP, alkaline phosphatase.
3

4
5 ALT, alanine aminotransferase.
6

7
8 AST, aspartate aminotransferase.
9

10
11 CI, confidence interval.
12

13
14 GGT, gamma-glutamyl transpeptidase.
15

16
17 HR, hazard ratio.
18

19
20 LSM, liver stiffness measurement.
21

22
23 LT, liver transplantation.
24

25
26 MELD, model for end-stage liver disease.
27

28
29 PBC, primary biliary cholangitis.
30

31
32 UDCA, ursodeoxycholic acid.
33

34
35 VCTE, vibration-controlled transient elastography.
36
37
38
39
40
41
42
43
44
45
46
47
48
49
50
51
52
53
54
55
56
57
58
59
60
61
62
63
64
65

INTRODUCTION

1
2
3 Primary biliary cholangitis (PBC) is a slowly progressive, autoimmune cholestatic liver
4
5 disease that, if undertreated, eventually leads to cirrhosis and its life-threatening
6
7 complications [1]. Ursodeoxycholic acid (UDCA), the current universal standard-of-care
8
9 therapy for PBC [2-4], is associated with prolonged liver transplantation (LT)-free survival,
10
11 regardless of the disease stage and the observed biochemical response [5]. Nevertheless, the
12
13 patients with PBC (approximately one-third) with no complete response to UDCA, mainly due
14
15 to persistent elevated levels of alkaline phosphatase (ALP) or bilirubin after 12 months of
16
17 treatment, remain at high risk of poor long-term clinical outcome [6, 7]. These patients are
18
19 currently considered candidates for second-line therapies, whether available in routine care
20
21 in a label (obeticholic acid) or off-label (fibrates) use or still under clinical investigation in trials,
22
23 in association with UDCA therapy [8, 9].
24
25
26
27
28
29
30

31 Because PBC is a very slow chronic disease, liver biochemical tests are used as primary
32
33 surrogate endpoints for mortality or need for LT in most ongoing clinical trials [10]. Yet, the
34
35 predictive ability of such biochemical endpoints is only partial and their prognostic value in
36
37 the specific context of combination therapies not fully established. Therefore, the
38
39 development and validation of new surrogate markers of the disease that could be used in
40
41 combination with biochemical response as substitutes for clinical outcomes appear as a
42
43 necessary condition for a better evaluation of therapeutic strategies for PBC [11, 12]. In this
44
45 regard, the need to incorporate fibrosis stage into PBC risk stratification systems has recently
46
47 been proposed since assessment of fibrosis stage was shown to grant prognostic value beyond
48
49 biochemical response to treatment [13]. These findings strongly support the inclusion of non-
50
51 invasive markers of fibrosis in all future prognostic tools developed for PBC.
52
53
54
55
56
57
58
59
60
61
62
63
64
65

1 The introduction of vibration-controlled transient elastography (VCTE) using FibroScan®
2 in 2003 has revolutionized the evaluation of liver diseases [14]. Today, of the various
3 alternative techniques of liver elastography, VCTE remains one of the most popular and widely
4 used worldwide [15]. Liver stiffness measurement (LSM) by VCTE has indeed been shown as a
5 very simple and reliable means for diagnosing cirrhosis or advanced fibrosis in many chronic
6 liver diseases, including PBC [16, 17]. It has further been linked to the risk of portal
7 hypertension, cirrhotic decompensation, hepatocellular carcinoma, and liver-related
8 mortality in different liver conditions, including PBC [16, 18-20]. However, although LSM is
9 currently recommended by clinical practice guidelines for the assessment and monitoring of
10 PBC [21-23], its usefulness as a reliable predictor of clinical outcome in this disease remains
11 to be proven. In the present large-scale, international follow-up study of patients with PBC,
12 our aim was to assess and validate the prognostic value of LSM using FibroScan® alongside
13 those of pre-established biochemical response criteria and prognostic scores.
14
15
16
17
18
19
20
21
22
23
24
25
26
27
28
29
30
31
32
33
34
35

36 **METHODS**

37 ***Study population and Design***

38
39
40
41 Between November 2019 and November 2021, we conducted an international,
42 multicentre, retrospective cohort study under the auspices of the Global PBC Study Group and
43 the European Reference Network (ERN) for rare hepatological diseases (Rare-Liver). A total of
44 23 tertiary centres from 12 countries in Europe, North America and the Middle East
45 participated in the study. Unrelated derivation and validation cohorts were consecutively
46 built, including a total of 3284 and 701 patients with PBC, respectively. The contribution of
47 each participating centre to the constitution of these original data sources is shown in **Table**
48
49
50
51
52
53
54
55
56
57
58

59 **S1.**
60
61
62
63
64
65

1 All patients had a diagnosis of PBC established according to international guidelines [2,
2 4]. To be eligible for analysis, patients had to have at least one reliable VCTE measurement
3 using FibroScan® and a minimum of one year of subsequent FU. All available LSMs in a single
4 patient could be collected, regardless of the probe (M or XL) used. A reliable LSM was defined
5 by at least 10 valid measurements with an interquartile/median ratio $\leq 30\%$ according to the
6 manufacturer's recommendations and usual definition [14, 24]. All unreliable LSMs were
7 excluded from analysis. Patients with a history of LT or cirrhotic complication before first LSM
8 were excluded, as well as those with a history of autoimmune hepatitis overlap syndrome or
9 corticosteroid and/or immunosuppressive long-term therapy.
10
11
12
13
14
15
16
17
18
19
20
21
22

23 Blood test results within 2 months of LSMs were collected when available. We
24 considered as explanatory variables those previously shown to predict survival in PBC and
25 those judged to be clinically-relevant, including age, sex, serum bilirubin and albumin, ALP,
26 aspartate aminotransferase (AST), alanine aminotransferase (ALT), gamma-glutamyl
27 transpeptidase (GGT), platelet count, international normalized ratio, serum creatinine,
28 histological stage, and concomitant treatment with UDCA, obeticholic acid, and/or fibrates.
29 The Globe, UK-PBC, MELD, and FIB-4 scores were calculated whenever possible [25-28].
30 Because most patients were included several years after the start of treatment, the Globe and
31 UK-PBC scores were calculated considering LSM date as at 1 year of treatment. Biochemical
32 response to treatment was defined according to the Paris-2, Toronto, and Globe criteria using
33 the same rule of date than for prognostic scores [6, 25, 29].
34
35
36
37
38
39
40
41
42
43
44
45
46
47
48
49
50

51 The study entry was the date of the first reliable LSM available. The time between the
52 date of entry and the occurrence of a clinically-significant event was calculated. Poor clinical
53 outcomes were defined as death, LT or registration on the liver transplant waiting list, or
54 complication of cirrhosis, including variceal bleeding, ascites, hepatic encephalopathy, or
55
56
57
58
59
60
61
62
63
64
65

1 hepatocellular carcinoma, when no death or LT was reported at time of last follow-up. The
2 patients who did not experience any of these events were censored at the date of last known
3
4
5 visit.
6

7 The study was conducted in accordance with the Declaration of Helsinki. It was a
8
9
10 retrospective observational analysis based on previously collected routine care data with no
11
12
13 opposition by patients. The protocol was approved by the institutional research board of each
14
15
16 participating centre in accordance with their local regulations.
17

18 19 20 **Statistical Analysis** 21

22
23 We conducted a multivariable survival analysis using LSM and biochemical covariates as
24
25
26 time-dependent variables. The primary endpoint of the study was survival without poor
27
28
29 clinical outcomes, including death, LT, or liver complications as defined above. This endpoint
30
31
32 was assessed in the derivation and validation cohorts using a time-dependent, multivariable-
33
34
35 adjusted Cox proportional-hazards model. For each covariate analyzed, the association with
36
37
38 the primary endpoint was expressed as a hazard ratio (HR) with 95% confidence interval (CI).
39
40
41 To explore the shape or log-linearity of the association between LSM and the HR of poor
42
43
44 clinical outcome, we estimated a Cox model with a smooth transformation of LSM at baseline
45
46
47 using cubic B-spline with 4 equally spaced knots. Several sensitivity analyses on different
48
49
50 subpopulations of patients were performed: 1) patients treated with UDCA monotherapy
51
52
53 beyond 12 months (exclusion of patients who received second-line therapy, including fibrates,
54
55
56 obeticholic acid, or corticosteroids; exclusion of LSMs performed before 12 months of UDCA),
57
58
59 2) patients assessed using FibroScan® M probe only (exclusion of LSMs performed with XL
60
61
62 probe). The predictive performance of LSM was evaluated at baseline using Harrell's C-index
63
64
65 and time-dependent receiver operating characteristic (ROC) curve analysis [30]. Inverse

1 probability of censoring weighting was used to calculate area under the ROC curves (AUROC)
2 as a function of time. Using bivariate models, the prognostic ability of LSM was individually
3
4 faced with those of the Paris-2, Toronto, and Globe criteria of biochemical response, as well
5
6 as those of the Globe, UK-PBC, MELD, APRI, and FIB-4 scores. Comparison of Harrell's C-indices
7
8 was performed using a non-parametric bootstrap approach with 500 replicates [31]. The
9
10 thresholds of LSM and Globe score that best discriminated patients into low, medium, and
11
12 high-risk groups for poor clinical outcomes were determined from the derivation cohort using
13
14 an unbiased grid search method with 2 cut-offs and optimal model selection based on log-
15
16 likelihood [32]. For simplicity, the LSM thresholds were rounded to the nearest whole number.
17
18 Risk heat maps for poor clinical outcomes were generated at different time points of follow-
19
20 up from LSM and Globe score values at baseline. The goodness-of-fit of the prognostic model
21
22 was assessed using a Poisson regression model applied to the validation cohort [33]. Survival
23
24 rates were determined using the Kaplan-Meier or Cox estimates. P-values < 0.05 were
25
26 considered significant. All statistical analyses were performed using SAS version 9.4 (SAS
27
28 corporation).

41 RESULTS

43 *Baseline Characteristics*

44
45
46 The flow chart of the study is shown in **Figure S1**. Of the 3985 patients initially registered,
47
48 of which 3284 and 701 were in the derivation and validation cohorts, respectively, 3308 (83%)
49
50 were eligible for analysis, of which 2740 (83%) were in the derivation cohort and 568 (81%) in
51
52 the validation cohort. Of the 6859 and 1656 LSMs registered in the derivation and validation
53
54 cohorts, respectively, 1044 (15.2%) and 148 (8.9%) were missing (supposedly failed) or
55
56 unreliable. The total number of LSMs available for analysis was 5324 (median per patient 2,
57
58
59
60
61
62
63
64
65

1 range 1 – 5) in the derivation cohort and 1470 (median per patient 2, range 1 – 8) in the
2 validation cohort. In patients with ≥ 2 LSMs, the mean time between consecutive LSMs was
3
4
5 2.3 ± 1.5 years and 1.7 ± 1.4 years, respectively. The entry characteristics of patients in both
6
7 cohorts are shown in **Table 1**. Disease characteristics, such as serum levels of total bilirubin
8
9 and transaminases, LSM, APRI and FIB-4 scores, or the percentage of patients with cirrhosis
10
11 or advanced fibrosis, indicated more severe disease at baseline in the validation cohort than
12
13 in the derivation cohort.
14
15

16 17 18 19 20 *Treatment and Disease Outcome* 21

22
23 As expected, the vast majority of patients ($> 90\%$) were treated with UDCA (more than
24
25 50% at entry received UDCA for > 1 year), while second-line therapy with obeticholic acid or
26
27 fibrates at any time of follow-up was reported in approximately 20% (18.0% in the derivation
28
29 cohort, 22.2% in the validation cohort). The mean follow-up was 5.0 ± 3.1 years (median 4.1
30
31 years, IQR 2.5 – 6.9 years, range 1.0 – 16.4 years) in the derivation cohort and 5.0 ± 2.8 years
32
33 (median 4.5 years, IQR 2.7 – 6.3 years, 1.0 – 15.7 years) in the validation cohort. The rates of
34
35 all-cause and liver-related deaths and of liver complications without subsequent death/LT at
36
37 time of last follow-up were comparable between cohorts, but LT was more frequently
38
39 observed in the validation cohort than in the derivation cohort, which is consistent with more
40
41 advanced disease in the former cohort (**Table 1**). In total, 274 (10.1%) patients in the
42
43 derivation cohort and 82 (14.4%) in the validation cohort reached the primary endpoint. The
44
45 5-, 10-, and 15-year survival rates without LT or liver complications were 93.5%, 81.3%, and
46
47 49.3%, respectively in the derivation cohort, and 87.5%, 75.3%, and 42.6%, respectively in the
48
49 validation cohort (p-value for log-rank test < 0.0001 , **Figure 1**).
50
51
52
53
54
55
56
57
58
59
60
61
62
63
64
65

Association of LSM with Disease Outcome

1
2
3 In a time-dependent univariate analysis, LSM was significantly associated with poor
4
5 clinical outcomes in both the derivation (HR per kPa added 1.065, 95% CI 1.057 – 1.074,
6
7 $p < 0.0001$) and validation (HR per kPa added 1.061, 95% CI 1.050 – 1.071, $p < 0.0001$) cohorts.
8
9
10 Between 5 and 30 kPa, the log hazard of clinical outcomes increased as a monotonic function
11
12 of LSM (**Figure 2A**). In a time-dependent, multivariable analysis within the derivation cohort,
13
14 including age, sex, and known prognostic factors such as total bilirubin, albumin, ALP, AST,
15
16 and platelet count, LSM was the covariate most strongly associated with poor clinical
17
18 outcomes (**Table 2**). This result was replicated in the validation cohort (**Table S2**) and
19
20 remained true even when the analysis was restricted to patients treated with UDCA only and
21
22 to LSMs beyond 1 year of treatment (**Table S3**). Excluding the measurements obtained with
23
24 the XL probe (n=682) did not affect the results either (**Table S4**).
25
26
27
28
29
30

Predictive Ability of LSM

31
32
33 At baseline, the adjusted Harrell's C-index (95% CI) for LSM was 0.8305 (0.7933 – 0.8677)
34
35
36 in the derivation cohort and 0.9181 (0.8895 – 0.9467) in the validation cohort. When analysed
37
38 using a time-dependent ROC curve analysis, the predictive ability of baseline LSM for poor
39
40 clinical outcomes was stable over years (**Figure 2B**). The prognostic performance at baseline
41
42 of the biochemical response criteria (Paris-2, Toronto, and Globe), fibrosis scores (APRI, FIB-
43
44 4) and prognostic scores (Globe, UK-PBC, and MELD) were determined both individually and
45
46 alongside LSM in the derivation (**Table 3**) and validation (**Table S5**) cohorts. LSM significantly
47
48 added to the performance of these predictors at baseline. In a time-dependent bivariate
49
50 analysis, LSM showed independent predictive value as compared to each predictor (**Table S6**).
51
52
53
54
55
56
57
58
59
60
61
62
63
64
65

1
2
3
4
5
6
7
8
9
10
11
12
13
14
15
16
17
18
19
20
21
22
23
24
25
26
27
28
29
30
31
32
33
34
35
36
37
38
39
40
41
42
43
44
45
46
47
48
49
50
51
52
53
54
55
56
57
58
59
60
61
62
63
64
65

As the Globe score had the second highest predictive value after LSM, it was chosen as the main competitor of LSM for the rest of the study.

LSM and Biochemical Predictors Interactions

Interactions between LSM and biochemical predictors were evaluated both semi-quantitatively and continuously. In the derivation cohort, the thresholds that optimally separated patients at baseline into low-, medium-, and high-risk groups were 8 kPa and 15 kPa for LSM, and 0.5 and 1.8 for the Globe score ($p < 0.0001$ for both, **Figure 3A**). The discriminative ability of these thresholds was confirmed in the validation cohort ($p < 0.0001$ for both, **Figure 3B**). The distributions of low-, medium-, and high-risk groups based on LSM were 61.9%, 26.5%, and 11.6% in the derivation cohort and 52.1%, 29.1%, and 18.8% in the validation cohort. Those based on the Globe score were 70.5%, 24.9%, and 4.6%, and 65.8%, 26.9%, and 7.3%, respectively. Compared to low-risk group, the HRs associated with medium and high-risk groups were 3.496 (95%CI 2.412 – 5.069) and 15.677 (95%CI 10.878 – 22.592), respectively for LSM and 4.157 (95%CI 3.013 – 5.734) and 24.720 (95%CI 16.773 – 36.430), respectively for the Globe score. LSM thresholds were able to separate patients into risk groups irrespective of age category (≤ 45 years vs. > 45 years; **Figure S2**). Considered together, LSM and Globe score thresholds provided a more accurate stratification of patients into risk subgroups (**Figure 4A**). When a commonly-used binary criterion for biochemical response, as Paris-2 definition, was used instead of the Globe score, LSM thresholds continued to discriminate patients into significant risk groups regardless of therapeutic response (**Figure 4B**). Finally, risk heat maps for poor clinical outcomes at 1, 3, 5, and 10 years of follow-up were derived from the continuous values of LSM and Globe score at baseline (**Figure 5**). The calibration of the model was adequate with a standardized incidence ratio of observed vs.

1 expected events of 1.15 (95% CI, 0.92 – 1.45) (**Table S7**). The predicted probabilities of poor
2 outcomes and 95% CI can be calculated using a web tool available at the following internet
3 address: <https://triton.iplesp.upmc.fr/webcalculator/>.
4
5
6
7
8
9

10 **DISCUSSION**

11
12 In this study of > 3,000 patients with PBC without prior cirrhosis-related complications
13 followed-up for an average of 5 years over the past 15 years in tertiary centres from Europe,
14 North America or the Middle East, elevated values of LSM as assessed by VCTE (FibroScan®)
15 were unequivocally associated with increased risk of poor clinical outcomes, including death,
16 LT or liver complications. This association was independent of baseline and temporal
17 prognostic factors and scores, treatment type and response, and duration of follow-up. These
18 results were replicated in an external validation cohort. The combination of LSM with
19 established biochemical criteria of therapeutic response or prognostic scores improved
20 prognostic prediction for patients. Therefore, these findings confirm that LSM could be useful
21 to evaluate and monitor PBC patients in routine care and therapeutic trials in combination
22 with biochemical results.
23
24
25
26
27
28
29
30
31
32
33
34
35
36
37
38
39
40

41 The use of LSM in medical practice has developed considerably over the last 15 years
42 [15, 34]. Among the different techniques available, VCTE (FibroScan®) was the first to be
43 marketed, has been the most extensively evaluated, and is today one of the most popular and
44 commonly used, especially in hepatology units [14, 35]. Prior studies in patients with PBC have
45 shown an association of LSM with histological fibrosis stage, degree of portal hypertension,
46 and risk of death or need for LT [16, 17, 19, 20, 36-38]. However, these results are still
47 supported by limited data and a few small-size single-centre studies. The present study is the
48 largest ever study of LSM value in PBC. It shows that between 5 kPa and 30 kPa, namely the
49
50
51
52
53
54
55
56
57
58
59
60
61
62
63
64
65

1 range within which most patients with PBC are seen in routine, the risk of poor clinical
2 outcomes increases as a monotonic function of LSM, a characteristic shared with serum levels
3 of ALP and bilirubin [7]. This indicates that the lower the LSM, the higher the survival time
4 without poor clinical outcomes. In addition, our results show that the prognostic ability of LSM
5 is sustained in time and across specific high-risk groups such as inadequate responders or
6 relatively young patients. Taken together, these results strongly support the use of LSM by
7 VCTE in the assessment and monitoring of PBC, both in routine care practice and clinical trials,
8 in conjunction with established prognostic biochemical indices.
9

10 It has been shown that LSM values > 9.6 kPa at baseline could distinguish high- from
11 low-risk PBC patients for clinical outcome [16]. The present study has gained in specificity in
12 distinguishing between low, medium and high-risk patients based on the 8-kPa and 15-kPa
13 thresholds that were determined using an unbiased method. These cut-offs correspond
14 virtually to the diagnostic thresholds for significant fibrosis and cirrhosis, respectively, which
15 is clinically relevant and consistent with the established prognostic value of fibrosis stage in
16 chronic liver diseases, especially PBC [13]. The 15-kPa threshold is also in line with the Baveno
17 VII recommendations, which suggest using >15 kPa as the threshold above which
18 compensated advanced chronic liver disease should be strongly suspected, regardless of
19 aetiology [23]. Medium- and high-risk patients, who should be prioritized for clinical trials,
20 represented approximately 40% of the whole cohort. These patients showed approximately
21 4-fold and 16-fold higher risk of poor clinical outcomes, respectively, as compared to low-risk
22 patients. While the 10-year rate of clinical events in low-risk patients did not exceed 20%, it
23 varied between 20% and 50% in medium-risk patients, and between 50% and 90% in high-risk
24 patients, particularly in relation to the biochemical response.
25
26
27
28
29
30
31
32
33
34
35
36
37
38
39
40
41
42
43
44
45
46
47
48
49
50
51
52
53
54
55
56
57
58
59
60
61
62
63
64
65

1
2
3
4
5
6
7
8
9
10
11
12
13
14
15
16
17
18
19
20
21
22
23
24
25
26
27
28
29
30
31
32
33
34
35
36
37
38
39
40
41
42
43
44
45
46
47
48
49
50
51
52
53
54
55
56
57
58
59
60
61
62
63
64
65

Second-line therapy for PBC (obeticholic acid or fibrates) is currently recommended in patients with an inadequate biochemical response to UDCA, regardless of disease stage [2-4]. Over the last 10 years, several definitions of inadequate biochemical response have been proposed, of which the Paris-2, Toronto, and Globe score-based definitions are among the best known [6, 25, 29]. The present study shows that LSM provides prognostic information in PBC beyond biochemical response, regardless of the definition used. This should prompt future recommendations for PBC therapy to integrate LSM in decision-making algorithms. Indeed, even adequate responders to UDCA could be legitimate candidates for second-line therapy if a medium or high probability of clinical events is predicted by LSM, considering that any 10-year rate of clinical events above 20% in a middle-aged population is a poor outcome.

The fact that in the present study LSM was shown as the variable most strongly associated with long-term outcomes in PBC, ahead ALP and bilirubin levels, suggests that it might be used in therapy trials as a surrogate endpoint for survival. This is supported by the results of the recent phase 3 BEZURSO (bezafibrate for PBC with inadequate response to UDCA) trial, a 2-year double-blind, randomized study in which LSM was shown to increase significantly in patients assigned to the placebo group, whereas it remained stable or even decreased in those assigned to the bezafibrate group [9]. This suggests two key points: 1) progression of LSM is expected in UDCA-resistant patients; 2) a pharmacological treatment can slow, stop, or even reverse this course. Consequently, a primary composite endpoint defined by a clinically-relevant biochemical response (ideally, normalisation of ALP and bilirubin) and no concomitant increase in LSM might appear to be a realistic target that could become the new standard for PBC trials in UDCA-resistant patients. Further studies, however, are needed to characterise the temporal evolution of LSM in different risk groups of PBC

1 patients, and specifically the inter- and within-patient variability of this measure over time.
2 These repeated measures analyses are currently underway.
3

4
5 There are some limitations to the present study. The derivation and validation cohorts
6
7 were created consecutively from different periods and centers. This could explain the
8
9 differences observed in the severity of the two cohorts at baseline, as well as in long-term
10
11 clinical outcomes, despite the same selection and exclusion criteria used. Finding additional
12
13 LSM data for validation was difficult because the derivation cohort was assembled from the
14
15 main leading PBC expert centers equipped with FibroScan®. This may have introduced a
16
17 selection bias in the validation cohort in that, especially in smaller, less PBC-focused centers,
18
19 FibroScan® may be used primarily in patients with more advanced disease. The study was not
20
21 conducted on an intent-to-predict basis and was limited to LSM results considered reliable
22
23 and interpretable according to the manufacturer’s recommendations and usual definition [14,
24
25 24]. On the overall cohorts, 1192 (13.9%) out of 8515 LSMs were unreliable or failed, which is
26
27 consistent with data from other large studies in other chronic liver diseases [39, 40]. This rate
28
29 of about 10%-15% of unreliable or failed results with this elastography technique (VCTE)
30
31 should be kept in mind, especially if LSM is considered as an endpoint for assessing therapy
32
33 strategies. The use and follow-up policies of LSM were not uniform across centres and were
34
35 probably biased by the fact that clinicians are more likely to assess and repeat LSM in
36
37 symptomatic patients and/or with more advanced disease. However, we used a time-
38
39 dependent multivariable-adjusted analysis in order to minimize the potential impact of
40
41 population and follow-up heterogeneity between centres, and a large number of patients with
42
43 low LSM at baseline was followed over time with repeated measurements.
44
45
46
47
48
49
50
51
52
53
54
55

56
57 In conclusion, in the largest ever study of LSM in patients with PBC, we show that LSM
58
59 assessed by VCTE improves prediction of survival beyond biochemical response, established
60
61
62
63
64
65

1 prognostic scores, and age categories, independent of time. A significant proportion (40%) of
2 PBC patients are at medium or high risk of poor clinical outcome according to LSM. This robust
3 analysis suggests that LSM can reasonably be regarded as useful prognostic marker and a
4 potential surrogate endpoint in PBC clinical trials.
5
6
7
8
9

10 REFERENCES

- 11
12
13
14
15 [1] Lleo A, Wang GQ, Gershwin ME, Hirschfield GM. Primary biliary cholangitis. *Lancet*
16 2020;396:1915-1926.
17
18
19
20 [2] EASL Clinical Practice Guidelines: The diagnosis and management of patients with
21 primary biliary cholangitis. *J Hepatol* 2017;67:145-172.
22
23
24
25 [3] Hirschfield GM, Dyson JK, Alexander GJM, Chapman MH, Collier J, Hubscher S, et al. The
26 British Society of Gastroenterology/UK-PBC primary biliary cholangitis treatment and
27 management guidelines. *Gut* 2018;67:1568-1594.
28
29
30
31
32
33 [4] Lindor KD, Bowlus CL, Boyer J, Levy C, Mayo M. Primary Biliary Cholangitis: 2018 Practice
34 Guidance from the American Association for the Study of Liver Diseases. *Hepatology*
35 2019;69:394-419.
36
37
38
39
40
41 [5] Harms MH, van Buuren HR, Corpechot C, Thorburn D, Janssen HLA, Lindor KD, et al.
42 Ursodeoxycholic acid therapy and liver transplant-free survival in patients with primary
43 biliary cholangitis. *J Hepatol* 2019;71:357-365.
44
45
46
47
48
49 [6] Corpechot C, Chazouilleres O, Poupon R. Early primary biliary cirrhosis: biochemical
50 response to treatment and prediction of long-term outcome. *J Hepatol* 2011;55:1361-
51 1367.
52
53
54
55
56
57 [7] Lammers WJ, van Buuren HR, Hirschfield GM, Janssen HL, Invernizzi P, Mason AL, et al.
58 Levels of alkaline phosphatase and bilirubin are surrogate end points of outcomes of
59
60
61
62
63
64
65

1 patients with primary biliary cirrhosis: an international follow-up study.
2 Gastroenterology 2014;147:1338-1349.
3

4
5 [8] Nevens F, Andreone P, Mazzella G, Strasser SI, Bowlus C, Invernizzi P, et al. A Placebo-
6
7 Controlled Trial of Obeticholic Acid in Primary Biliary Cholangitis. N Engl J Med
8
9 2016;375:631-643.
10

11
12 [9] Corpechot C, Chazouilleres O, Rousseau A, Le Gruyer A, Habersetzer F, Mathurin P, et al.
13
14 A Placebo-Controlled Trial of Bezafibrate in Primary Biliary Cholangitis. N Engl J Med
15
16 2018;378:2171-2181.
17

18
19 [10] Silveira MG, Brunt EM, Heathcote J, Gores GJ, Lindor KD, Mayo MJ. American Association
20
21 for the Study of Liver Diseases endpoints conference: design and endpoints for clinical
22
23 trials in primary biliary cirrhosis. Hepatology 2010;52:349-359.
24
25

26
27 [11] Harms MH, van Buuren HR, van der Meer AJ. Improving prognosis in primary biliary
28
29 cholangitis - Therapeutic options and strategy. Best Pract Res Clin Gastroenterol
30
31 2018;34-35:85-94.
32
33

34
35 [12] Corpechot C. Clinical Trials in PBC Going Forward. Semin Liver Dis 2019;39:e1-e6.
36
37

38
39 [13] Murillo Perez CF, Hirschfield GM, Corpechot C, Floreani A, Mayo MJ, van der Meer A, et
40
41 al. Fibrosis stage is an independent predictor of outcome in primary biliary cholangitis
42
43 despite biochemical treatment response. Aliment Pharmacol Ther 2019;50:1127-1136.
44
45

46
47 [14] Sandrin L, Fourquet B, Hasquenoph JM, Yon S, Fournier C, Mal F, et al. Transient
48
49 elastography: a new noninvasive method for assessment of hepatic fibrosis. Ultrasound
50
51 Med Biol 2003;29:1705-1713.
52
53

54
55 [15] Friedrich-Rust M, Poynard T, Castera L. Critical comparison of elastography methods to
56
57 assess chronic liver disease. Nature reviews Gastroenterology & hepatology
58
59 2016;13:402-411.
60
61

- 1
2
3
4
5
6
7
8
9
10
11
12
13
14
15
16
17
18
19
20
21
22
23
24
25
26
27
28
29
30
31
32
33
34
35
36
37
38
39
40
41
42
43
44
45
46
47
48
49
50
51
52
53
54
55
56
57
58
59
60
61
62
63
64
65
- [16] Corpechot C, Carrat F, Poujol-Robert A, Gaouar F, Wendum D, Chazouilleres O, et al. Noninvasive elastography-based assessment of liver fibrosis progression and prognosis in primary biliary cirrhosis. *Hepatology* 2012;56:198-208.
- [17] Cristoferi L, Calvaruso V, Overi D, Vigano M, Rigamonti C, Degasperi E, et al. Accuracy of Transient Elastography in assessing fibrosis at diagnosis in naive patients with Primary Biliary Cholangitis: a dual cut-off approach. *Hepatology* 2021;74:1496-1508.
- [18] Rigamonti C, De Benedittis C, Azzolina D, Costanzo M, Pirovano A, Croce A, et al. Liver stiffness dynamics predict survival in patients with primary biliary cholangitis treated with ursodeoxycholic acid. *Hepatology* 2019;70:803A.
- [19] Moctezuma-Velazquez C, Saffioti F, Tasayco-Huaman S, Casu S, Mason A, Roccarina D, et al. Non-Invasive Prediction of High-Risk Varices in Patients with Primary Biliary Cholangitis and Primary Sclerosing Cholangitis. *Am J Gastroenterol* 2019;114:446-452.
- [20] Osman KT, Maselli DB, Idilman IS, Rowan DJ, Viehman JK, Harmsen WS, et al. Liver Stiffness Measured by Either Magnetic Resonance or Transient Elastography Is Associated With Liver Fibrosis and Is an Independent Predictor of Outcomes Among Patients With Primary Biliary Cholangitis. *J Clin Gastroenterol* 2021;55:449-457.
- [21] European Association for the Study of the Liver. Electronic address eee, Clinical Practice Guideline P, Chair, representative EGB, Panel m. EASL Clinical Practice Guidelines on non-invasive tests for evaluation of liver disease severity and prognosis - 2021 update. *J Hepatol* 2021;75:659-689.
- [22] Corpechot C, Heurgue A, Tanne F, Potier P, Hanslik B, Decraecker M, et al. Non-invasive diagnosis and follow-up of primary biliary cholangitis. *Clin Res Hepatol Gastroenterol* 2022;46:101770.

- 1
2
3
4
5
6
7
8
9
10
11
12
13
14
15
16
17
18
19
20
21
22
23
24
25
26
27
28
29
30
31
32
33
34
35
36
37
38
39
40
41
42
43
44
45
46
47
48
49
50
51
52
53
54
55
56
57
58
59
60
61
62
63
64
65
- [23] de Franchis R, Bosch J, Garcia-Tsao G, Reiberger T, Ripoll C, Baveno VIF. Baveno VII -
Renewing consensus in portal hypertension. *J Hepatol* 2022;76:959-974.
- [24] Boursier J, Zarski JP, de Ledinghen V, Rousselet MC, Sturm N, Lebaill B, et al.
Determination of reliability criteria for liver stiffness evaluation by transient
elastography. *Hepatology* 2013;57:1182-1191.
- [25] Lammers WJ, Hirschfield GM, Corpechot C, Nevens F, Lindor KD, Janssen HL, et al.
Development and Validation of a Scoring System to Predict Outcomes of Patients With
Primary Biliary Cirrhosis Receiving Ursodeoxycholic Acid Therapy. *Gastroenterology*
2015;149:1804-1812.
- [26] Carbone M, Sharp SJ, Flack S, Paximadas D, Spiess K, Adgey C, et al. The UK-PBC risk
scores: Derivation and validation of a scoring system for long-term prediction of end-
stage liver disease in primary biliary cholangitis. *Hepatology* 2016;63:930-950.
- [27] Malinchoc M, Kamath PS, Gordon FD, Peine CJ, Rank J, ter Borg PC. A model to predict
poor survival in patients undergoing transjugular intrahepatic portosystemic shunts.
Hepatology 2000;31:864-871.
- [28] Sterling RK, Lissen E, Clumeck N, Sola R, Correa MC, Montaner J, et al. Development of
a simple noninvasive index to predict significant fibrosis in patients with HIV/HCV
coinfection. *Hepatology* 2006;43:1317-1325.
- [29] Kumagi T, Guindi M, Fischer SE, Arenovich T, Abdalian R, Coltescu C, et al. Baseline
Ductopenia and Treatment Response Predict Long-Term Histological Progression in
Primary Biliary Cirrhosis. *Am J Gastroenterol* 2010;105:2186-2194.
- [30] Heagerty PJ, Zheng Y. Survival model predictive accuracy and ROC curves. *Biometrics*
2005;61:92-105.

- 1
2
3
4
5
6
7
8
9
10
11
12
13
14
15
16
17
18
19
20
21
22
23
24
25
26
27
28
29
30
31
32
33
34
35
36
37
38
39
40
41
42
43
44
45
46
47
48
49
50
51
52
53
54
55
56
57
58
59
60
61
62
63
64
65
- [31] Kang L, Chen W, Petrick NA, Gallas BD. Comparing two correlated C indices with right-censored survival outcome: a one-shot nonparametric approach. *Stat Med* 2015;34:685-703.
 - [32] Lerman PM. Fitting Segmented Regression Models by Grid Search. *Applied Statistics* 1980;29:77-84.
 - [33] Crowson CS, Atkinson EJ, Therneau TM. Assessing calibration of prognostic risk scores. *Stat Methods Med Res* 2016;25:1692-1706.
 - [34] Mueller S. Liver elastography. In: Mueller S, editor. *Clinical Use and Interpretation*: Springer, Cham; 2020. p. XIX, 737.
 - [35] Friedrich-Rust M, Ong MF, Martens S, Sarrazin C, Bojunga J, Zeuzem S, et al. Performance of transient elastography for the staging of liver fibrosis: a meta-analysis. *Gastroenterology* 2008;134:960-974.
 - [36] Corpechot C, El Naggar A, Poujol-Robert A, Ziol M, Wendum D, Chazouilleres O, et al. Assessment of biliary fibrosis by transient elastography in patients with PBC and PSC. *Hepatology* 2006;43:1118-1124.
 - [37] Floreani A, Cazzagon N, Martines D, Cavalletto L, Baldo V, Chemello L. Performance and utility of transient elastography and noninvasive markers of liver fibrosis in primary biliary cirrhosis. *Dig Liver Dis* 2011;43:887-892.
 - [38] Zachou K, Lygoura V, Arvaniti P, Giannoulis G, Gatselis NK, Koukoulis GK, et al. FibroMeter scores for the assessment of liver fibrosis in patients with autoimmune liver diseases. *Annals of hepatology* 2021;22:100285.
 - [39] Castera L, Foucher J, Bernard PH, Carvalho F, Allaix D, Merrouche W, et al. Pitfalls of liver stiffness measurement: a 5-year prospective study of 13,369 examinations. *Hepatology* 2010;51:828-835.

[40] Cassinotto C, Boursier J, de Ledinghen V, Lebigot J, Lapuyade B, Cales P, et al. Liver stiffness in nonalcoholic fatty liver disease: A comparison of supersonic shear imaging, FibroScan, and ARFI with liver biopsy. *Hepatology* 2016;63:1817-1827.

1
2
3
4
5
6
7
8
9
10
11
12
13
14
15
16
17
18
19
20
21
22
23
24
25
26
27
28
29
30
31
32
33
34
35
36
37
38
39
40
41
42
43
44
45
46
47
48
49
50
51
52
53
54
55
56
57
58
59
60
61
62
63
64
65

Table 1. Entry and follow-up characteristics of patients

Characteristics	Derivation cohort (n=2740)	Validation cohort (n=568)
Year at entry	2013.9 ± 3.3	2012.5 ± 5.2
Age at entry (year)	57.9 ± 11.7	55.3 ± 12.3
Age at diagnosis (year)	51.8 ± 12.0	52.1 ± 12.1
Female Sex (yes)	2496 (91.1%)	509 (89.6%)
Body mass index (kg.m ⁻²)	26.2 ± 6.3	25.1 ± 4.7
Obesity (yes)	546 (19.9%)	80 (14.1%)
Total Bilirubin (μmol/l)	11.4 ± 13.1	15.5 ± 22.0
ALP (xULN)	1.8 ± 8.2	1.9 ± 1.4
ALT (xULN)	1.2 ± 1.1	1.7 ± 1.9
Albumin (g/l)	41.8 ± 3.8	41.8 ± 4.3
Platelet count (G/l)	252.8 ± 79.3	243.8 ± 88.5
LSM (kPa)	9.5 ± 9.0	11.7 ± 11.9
XL probe (yes)	351 (12.8%)	74 (13.0%)
APRI score	0.55 ± 0.57	0.73 ± 0.77
FIB-4 score	1.64 ± 1.25	1.87 ± 1.73
Advanced fibrosis* (yes)	660 (24.1%)	183 (32.3%)
Cirrhosis* (yes)	434 (15.8%)	130 (22.9%)
UDCA (at any time)	2704 (98.7%)	550 (96.8%)
UDCA at entry ≥ 1 year (yes)	1696 (61.9%)	302 (53.2%)
Obeticholic acid (at any time)	208 (7.6%)	43 (7.6%)
Fibrates (at any time)	362 (13.2%)	90 (15.9%)
Follow-up time (year)	5.0 ± 3.1	5.0 ± 2.8
No. of LSM per patient	2.1 ± 1.1	2.4 ± 1.3
All-cause death (yes)	145 (5.3%)	26 (4.6%)
Liver-related death (yes)	62 (2.3%)	13 (2.3%)
Liver transplantation (yes)	56 (2.0%)	39 (6.9%)
Liv. compl. wo LT/death (yes)	77 (2.8%)	17 (3.0%)

*Advanced fibrosis was defined by histological stage 3-4 or LSM > 10.7 kPa [16]. Cirrhosis was defined by histological stage 4, LSM > 16.9 kPa [16], or platelet count < 150000 G/l. UDCA, ursodeoxycholic acid.

Table 2. Time-dependent, multivariable-adjusted Cox regression analysis for poor clinical outcomes (derivation cohort, 2740 patients, 5324 LSMs)

Parameter	Estimate	Chi ²	HR (95% CI)	P-value
LSM (kPa)	0.0394 ± 0.0068	33.60	1.040 (1.026 – 1.054)	< 0.0001
ALP (xULN)	0.1996 ± 0.0461	18.77	1.221 (1.116 – 1.336)	< 0.0001
Platelets (G/l)	-0.0059 ± 0.0016	14.71	0.994 (0.991 – 0.997)	0.0001
Age (year)	0.0313 ± 0.0093	11.42	1.032 (1.013 – 1.051)	0.0007
Albumin (g/l)	-0.0471 ± 0.0140	11.39	0.954 (0.928 – 0.980)	0.0007
T. Bilirubin (μM/l)	0.1458 ± 0.0680	4.60	1.157 (1.013 – 1.322)	0.03
Male sex (yes)	0.3966 ± 0.2515	2.49	1.486 (0.908 – 2.433)	0.11
AST (xULN)	0.0316 ± 0.0955	0.11	1.032 (0.856 – 1.245)	0.74

Parameters are sorted by decreasing order of statistical significance. Poor clinical outcomes are defined by death, LT or liver complications.

Table 3. Added value of LSM to prognostic scores, fibrosis scores, and biochemical response criteria in predicting poor clinical outcomes in PBC

	Harrell's C-index (95% CI) unadjusted for LSM	Harrell's C-index (95% CI) adjusted for LSM	P-value
Globe score	0.7977 (0.7603 – 0.8351)	0.8322 (0.7952 – 0.8692)	0.0004
UK-PBC score	0.7469 (0.7028 – 0.7910)	0.7956 (0.7527 – 0.8385)	<0.0001
MELD score	0.7774 (0.7347 – 0.8201)	0.8314 (0.7959 – 0.8669)	0.0334
APRI score	0.7767 (0.7401 – 0.8134)	0.8253 (0.7904 – 0.8602)	<0.0001
FIB-4 score	0.7885 (0.7528 – 0.8242)	0.8312 (0.7961 – 0.8663)	<0.0001
Globe resp. (no)	0.7168 (0.6811 – 0.7525)	0.8178 (0.7802 – 0.8554)	<0.0001
Toronto resp. (no)	0.6591 (0.6258 – 0.6924)	0.8073 (0.7712 – 0.8434)	<0.0001
Paris-2 resp. (no)	0.6553 (0.6234 – 0.6872)	0.8105 (0.7744 – 0.8466)	<0.0001

Harrell's C-index reflects the probability a randomly selected patient who experienced a poor clinical outcome (death, LT, or liver complications) had a higher risk score or poorer response than a patient who had not experienced the event.

FIGURE LEGENDS

Figure 1. Probability of survival without poor clinical outcomes.

Probability of survival without poor clinical outcomes of patients with PBC in the derivation ($n = 2740$, solid line) and validation ($n = 568$, dotted line) cohorts. Survival rates between both cohorts were significantly different (log-rank test, $p < 0.0001$).

Figure 2. Performance of LSM in predicting poor clinical outcomes.

The log hazard of poor clinical outcomes as estimated using a cubic spline function of LSM at baseline (**panel A**). Predictive ability of baseline LSM for poor clinical outcomes as evaluated using a time-dependent area under receiver operating characteristic (ROC) curve analysis (**panel B**).

Figure 3. Probability of survival without poor clinical outcomes according to LSM and Globe score risk groups at baseline.

Probability of survival without poor clinical outcomes of patients with PBC as determined in the derivation (**panel A**) and validation (**panel B**) cohorts according to low- (thin line), medium- (mid-thick line), and high- (thick line) risk groups defined at baseline according to LSM (left diagrams) or Globe score (right diagrams) thresholds. The LSM and Globe score thresholds were determined using a grid search unbiased method. Survival probabilities were calculated using Kaplan-Meier estimates.

Figure 4. Probability of survival without poor clinical outcomes according to LSM and biochemical (Globe score, Paris-2 criteria) combined risk groups at baseline.

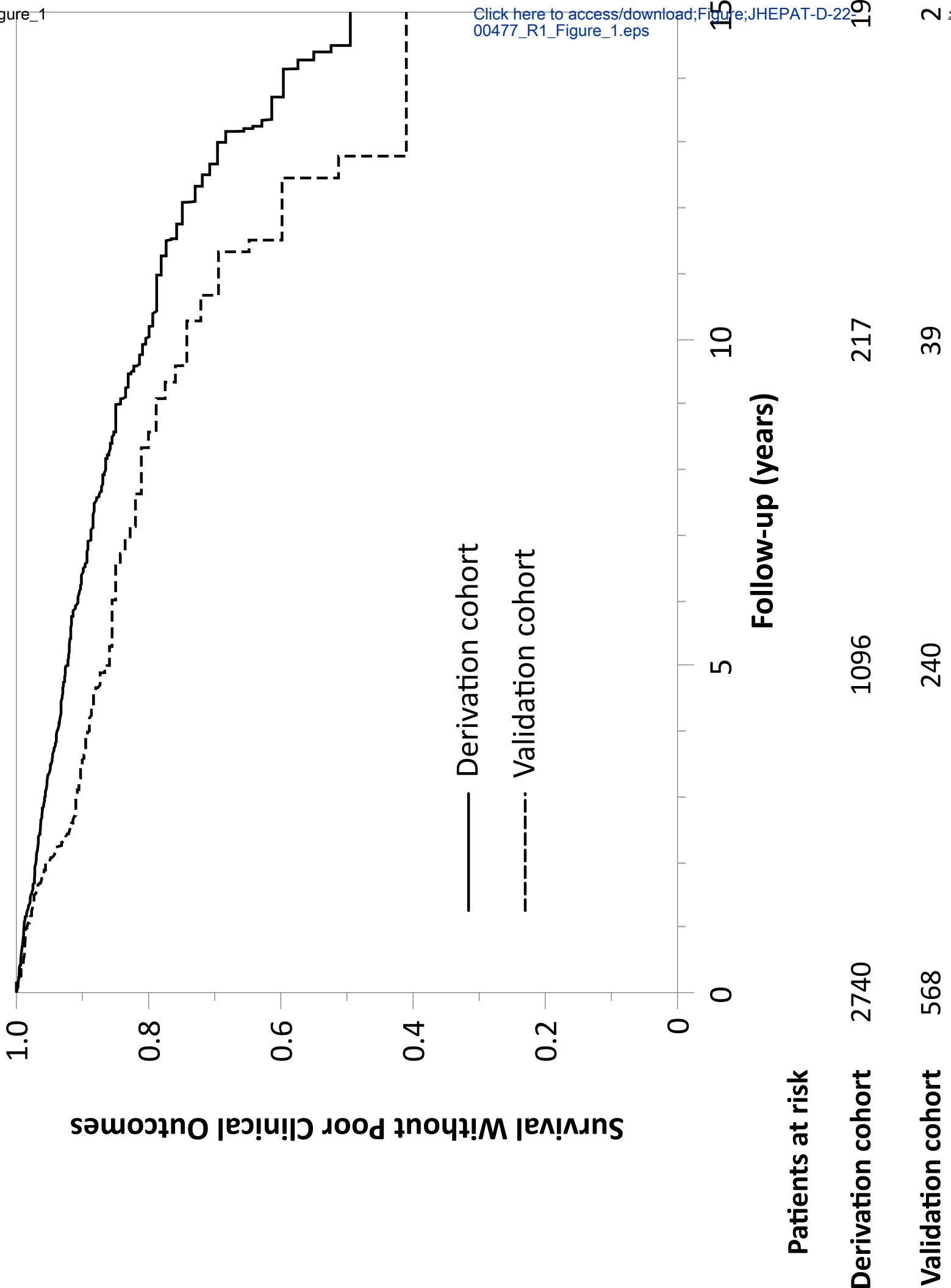
Probability of survival without poor clinical outcomes of patients with PBC as determined in the derivation cohort according to LSM and Globe score (GS) combined risk groups (**panel A**) or LSM and Paris-2 combined risk groups (**panel B**) assessed at baseline. Survival probabilities were calculated using Cox regression estimates.

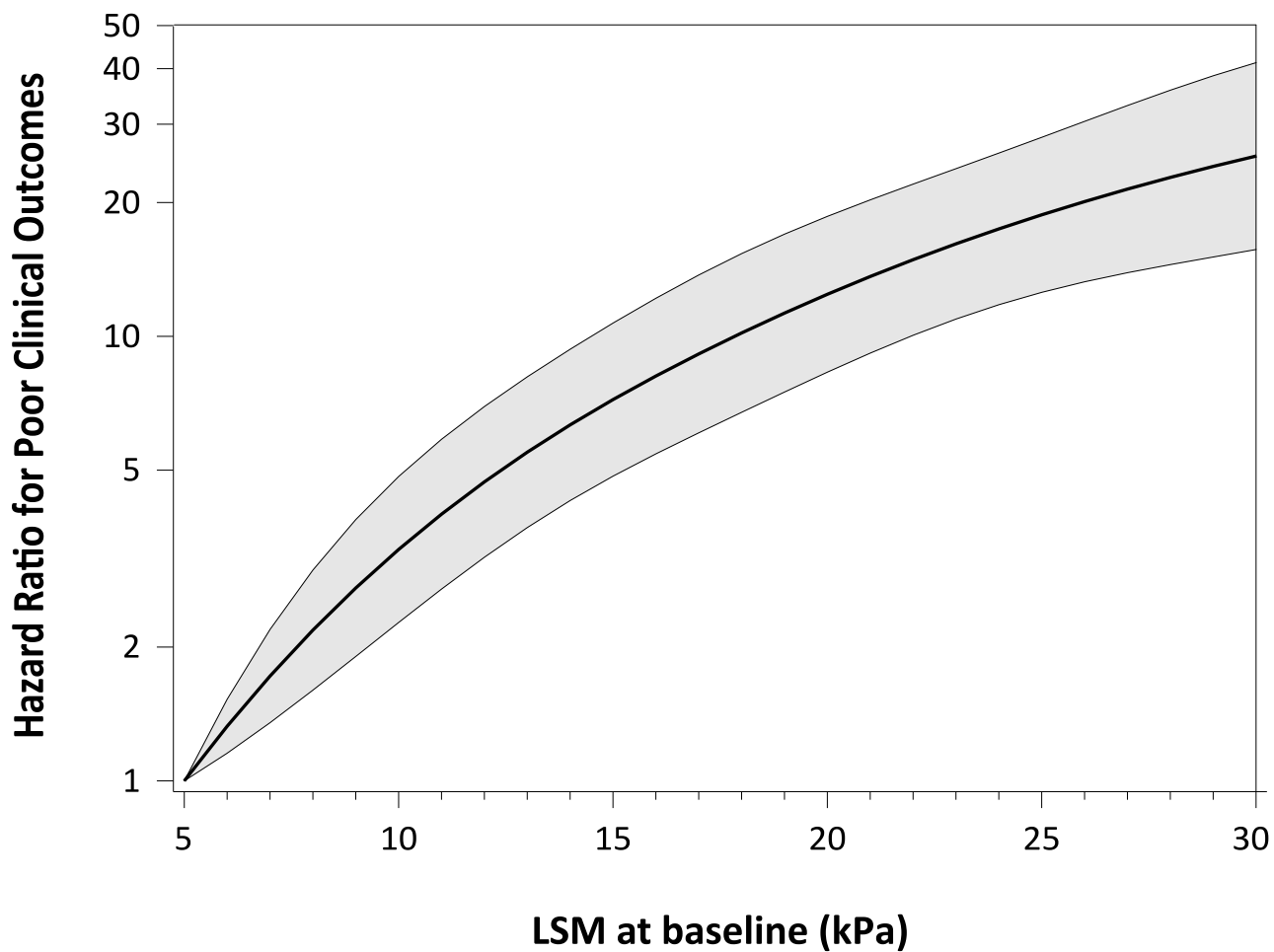
Figure 5. Risk heat maps for poor clinical outcomes as derived at 1, 3, 5, and 10 years from the baseline values of LSM and Globe score.

The expected probabilities of poor clinical outcomes, i.e., liver complications, liver transplantation, or death, were calculated at different time points (1, 3, 5, and 10 years) based on the baseline values of LSM and Globe score. A continuous colour scale (y-axis shown on the left) was used to visually represent the probability level. Probabilities and 95% confidence

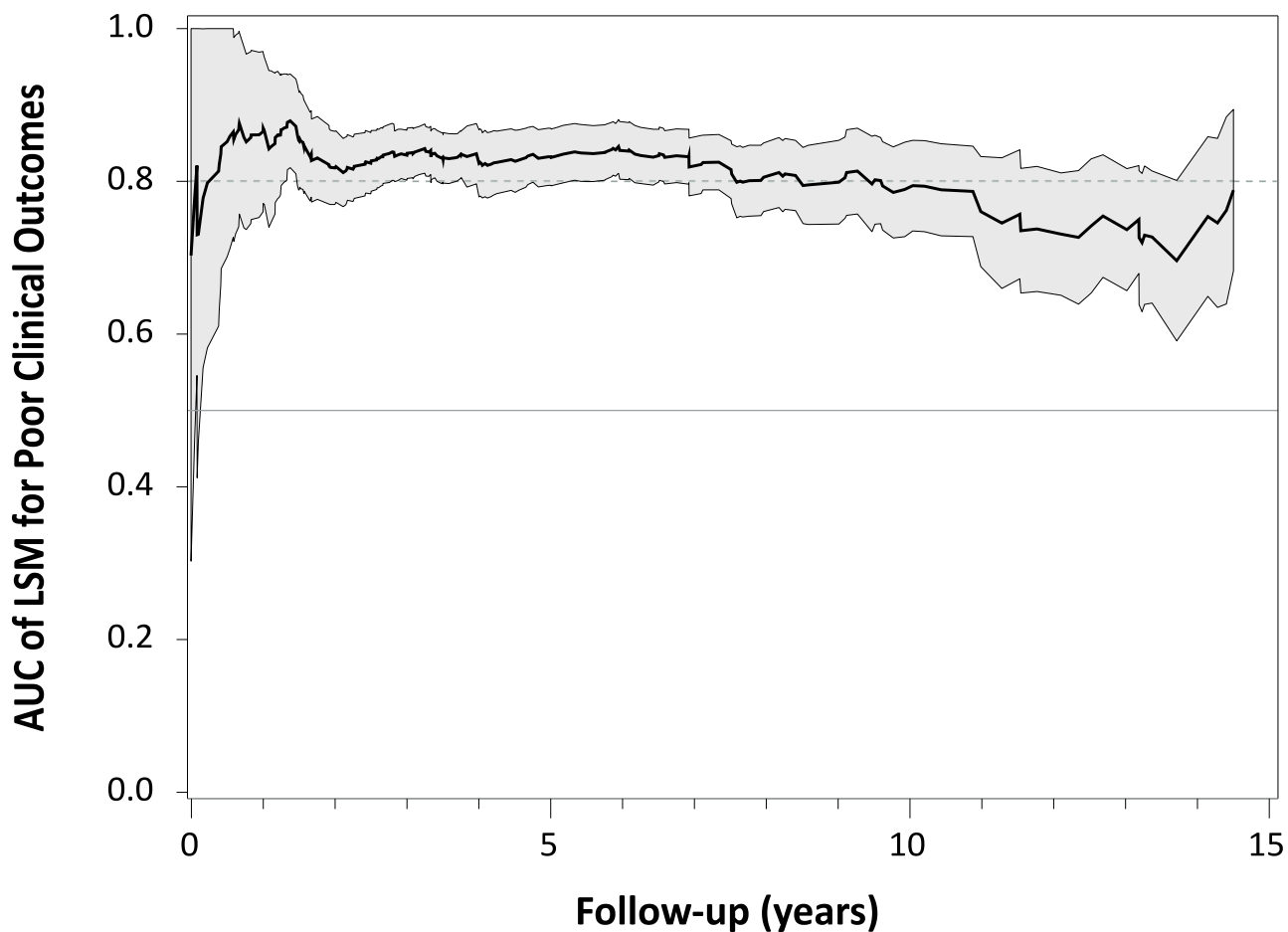
intervals can be determined using a web calculator available at the following internet address:
<https://triton.iplesp.upmc.fr/webcalculator/>.

- 1
- 2
- 3
- 4
- 5
- 6
- 7
- 8
- 9
- 10
- 11
- 12
- 13
- 14
- 15
- 16
- 17
- 18
- 19
- 20
- 21
- 22
- 23
- 24
- 25
- 26
- 27
- 28
- 29
- 30
- 31
- 32
- 33
- 34
- 35
- 36
- 37
- 38
- 39
- 40
- 41
- 42
- 43
- 44
- 45
- 46
- 47
- 48
- 49
- 50
- 51
- 52
- 53
- 54
- 55
- 56
- 57
- 58
- 59
- 60
- 61
- 62
- 63
- 64
- 65

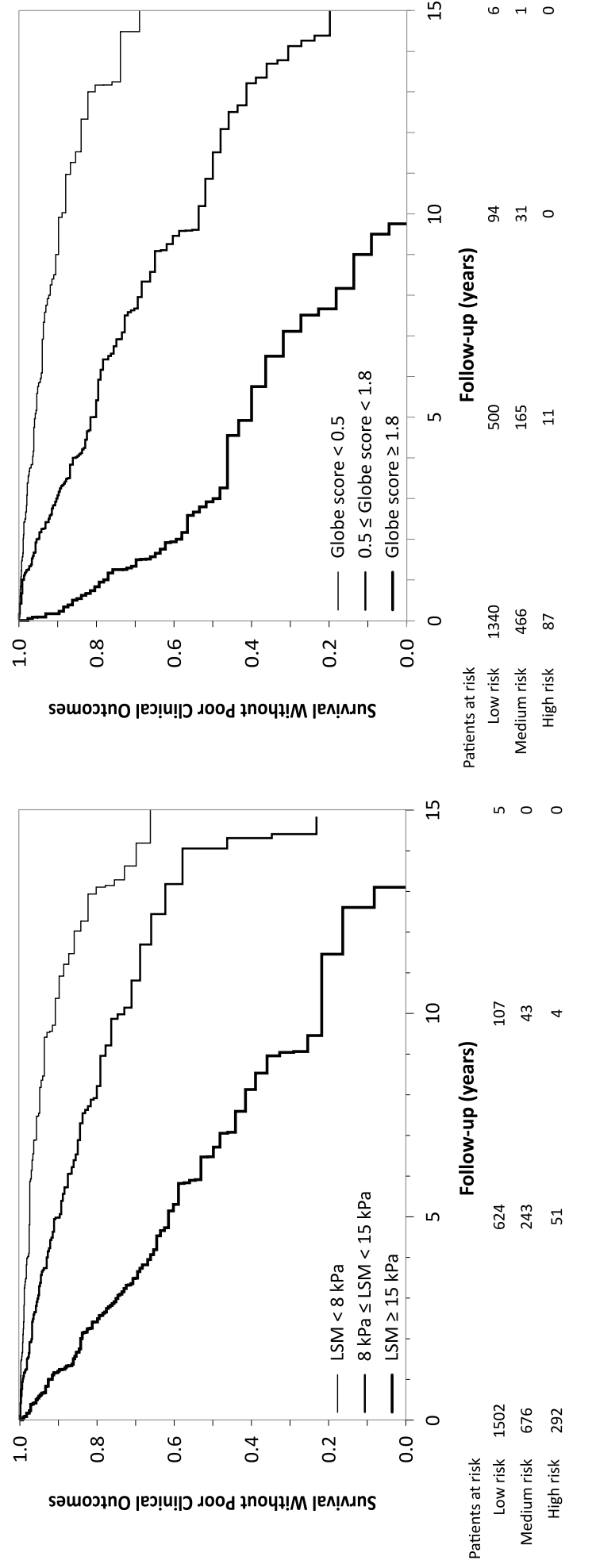




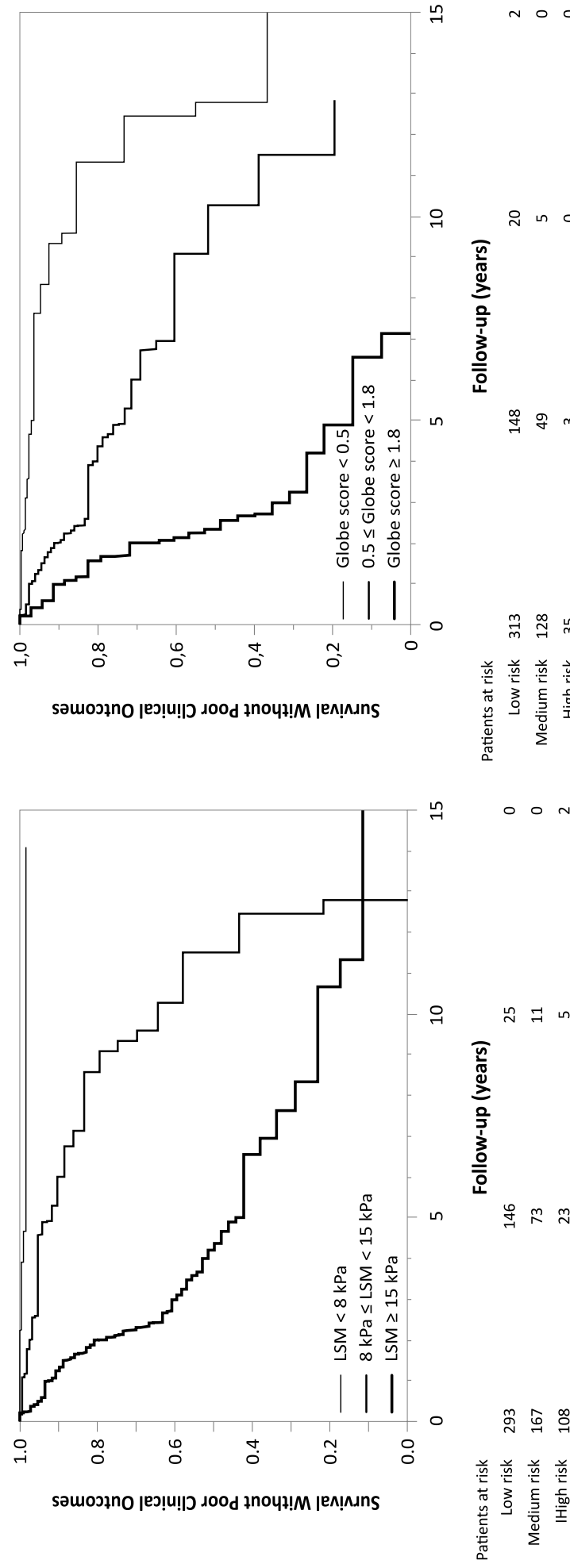
B.

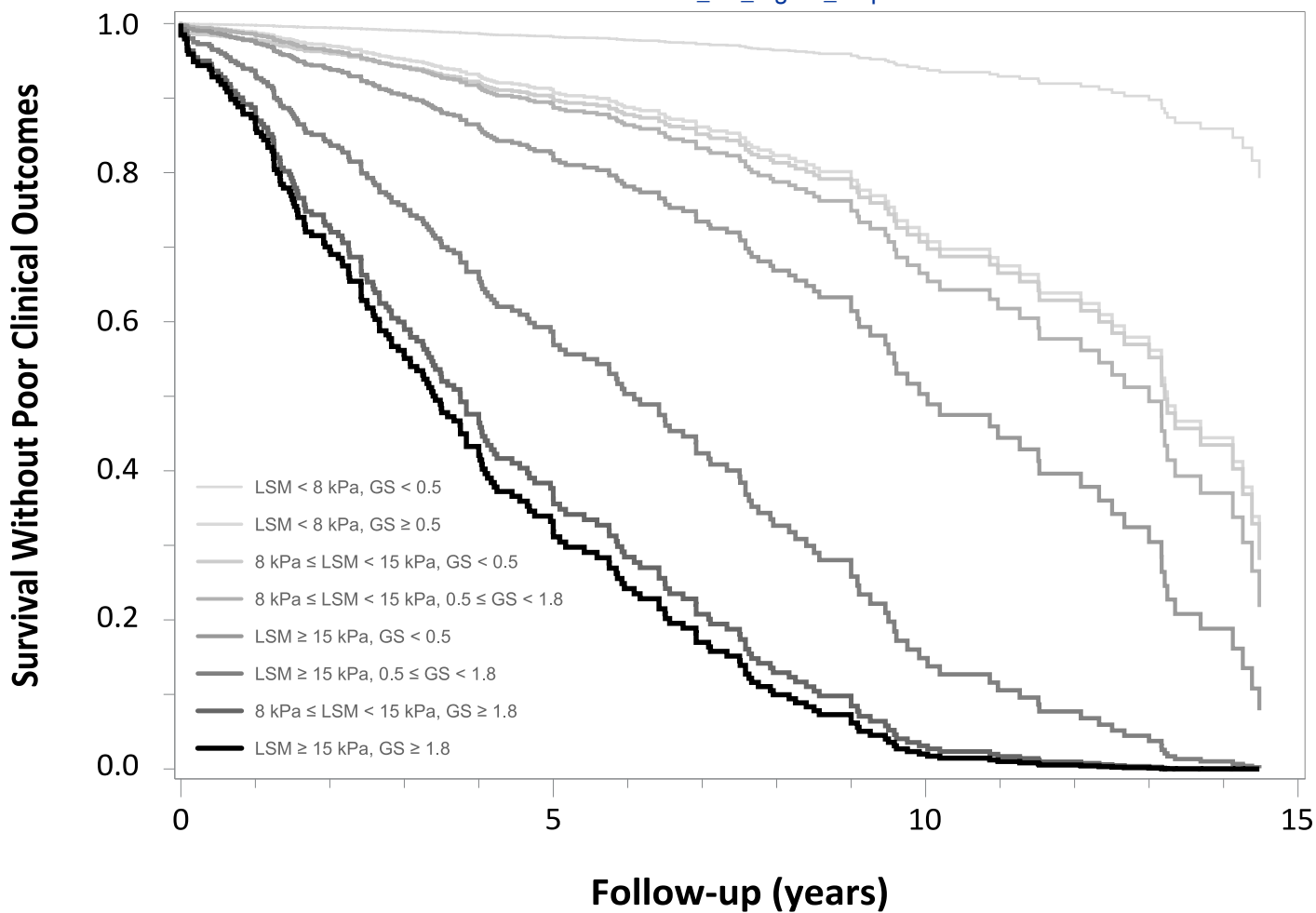


A. Derivation cohort

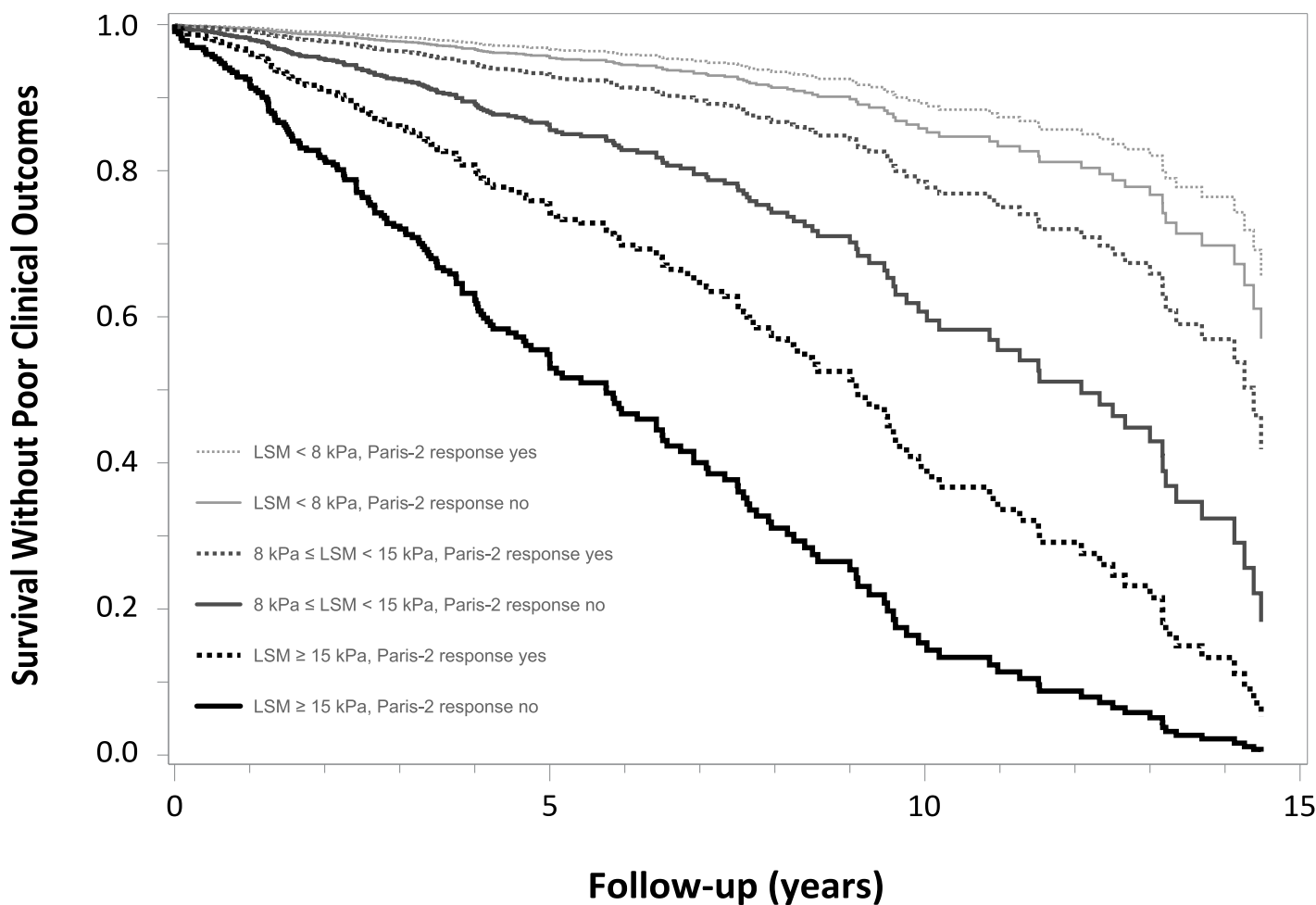


B. Validation cohort

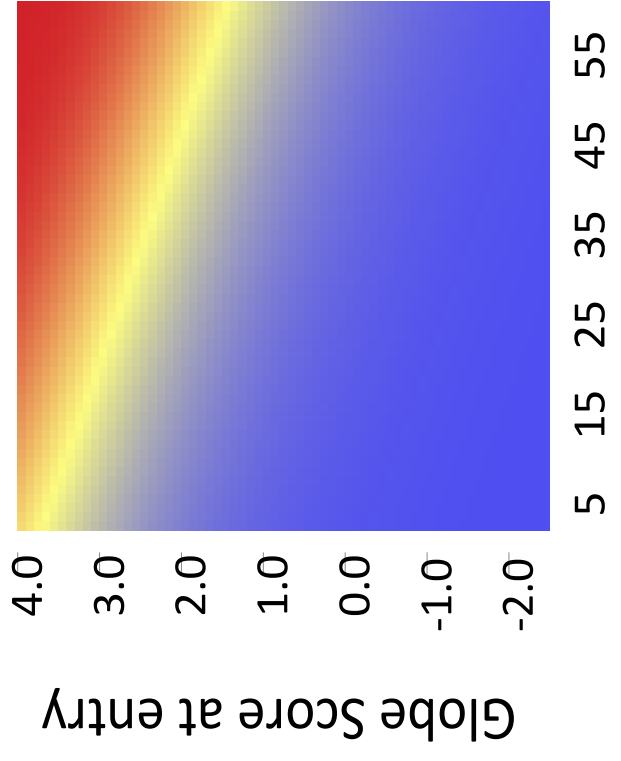




B. LSM and Paris-2 risk groups

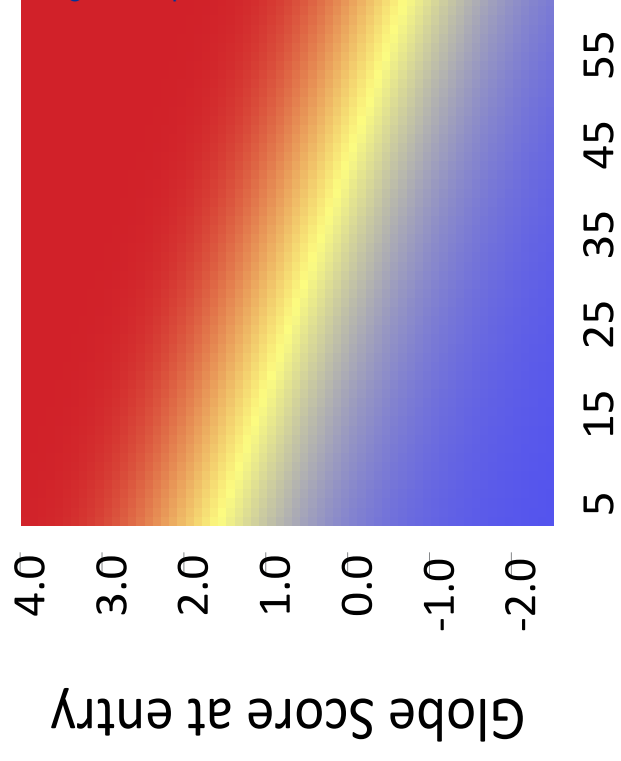


At 3 years



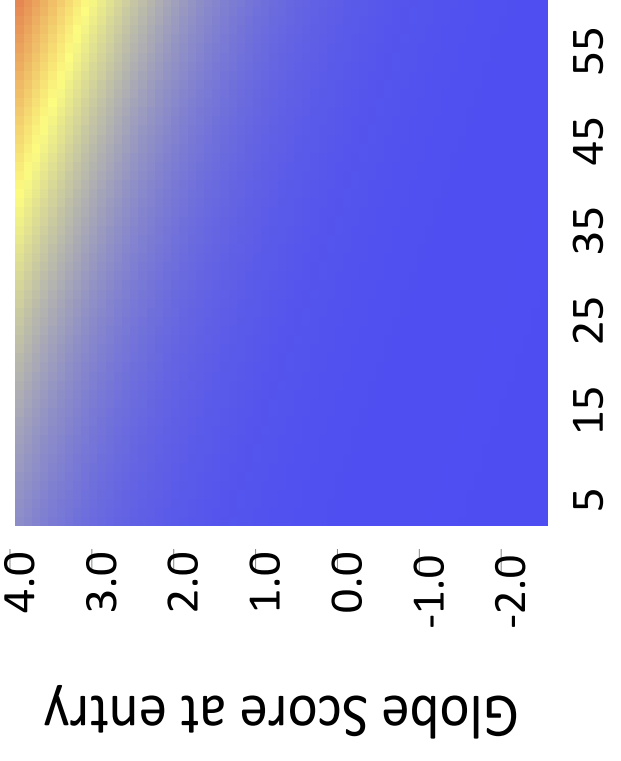
LSM at entry (kPa)

At 10 years



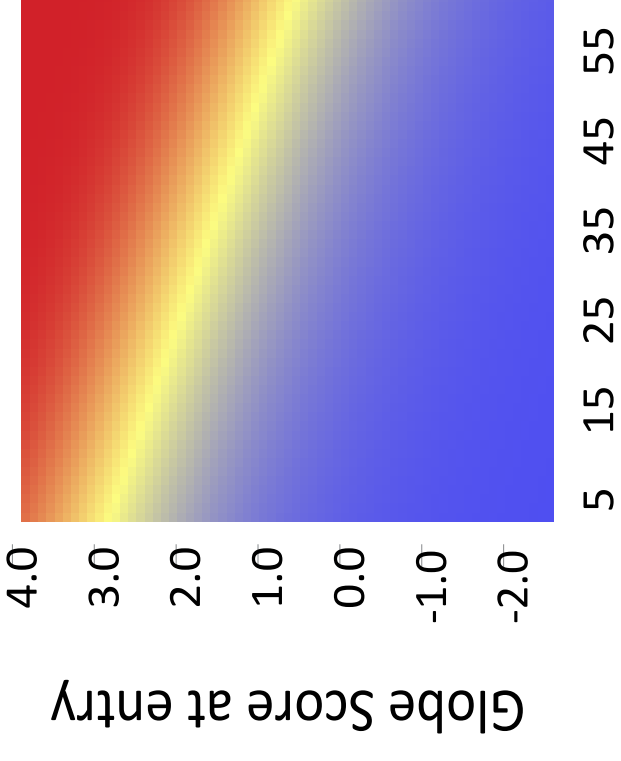
LSM at entry (kPa)

At 1 year

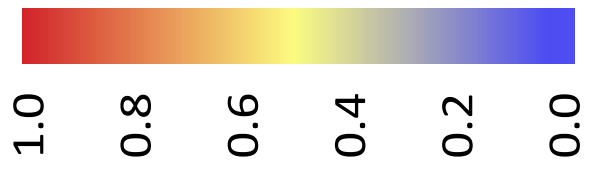


LSM at entry (kPa)

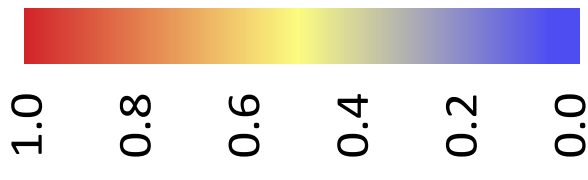
At 5 years



LSM at entry (kPa)



Expected Probability of Poor Outcomes



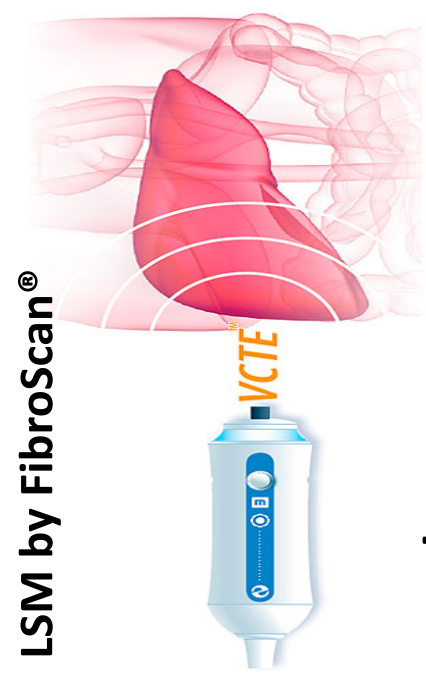
1.0
0.8
0.6
0.4
0.2
0.0

Improving Risk Prediction in Primary Biliary Cholangitis

Combining Liver Stiffness Measurement (LSM) and Globe Score Accurately Predicts Clinical Outcomes

Derivation (2740 Patients) & Validation (568 Patients) Cohorts

Liver Complications, Transplantation, or Death

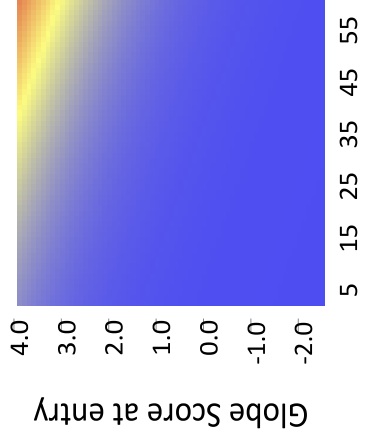


+

Globe Score

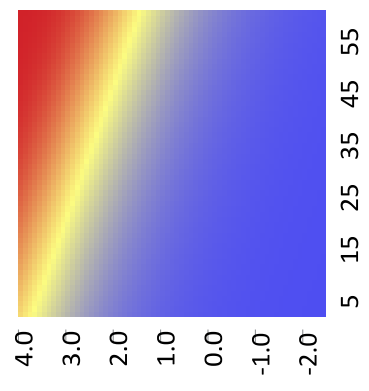


Expected Probability of Poor Outcomes



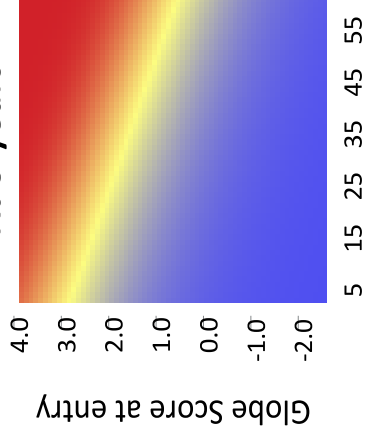
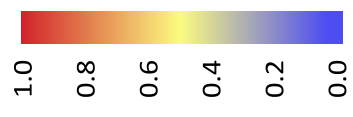
At 1 year

LSM at entry (kPa)



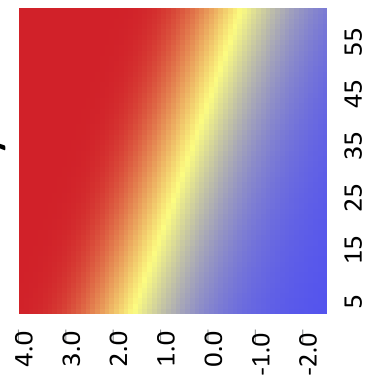
At 3 years

LSM at entry (kPa)



At 5 years

LSM at entry (kPa)



At 10 years

LSM at entry (kPa)

Probabilities and 95% confidence intervals are computable at: <https://triton.iplesp.upmc.fr/webcalculator/>

HIGHLIGHTS

- Although recommended by clinical practice guidelines for the assessment and monitoring of primary biliary cholangitis (PBC), liver stiffness measurement (LSM) by vibration-controlled transient elastography (VCTE) has not yet been validated as a relevant predictive marker of poor clinical outcome in this disease.
- In this large international study of LSM by VCTE in PBC (> 3,000 patients), LSM improved prediction of survival beyond established biochemical response criteria and prognostic scores and its prognostic value was externally validated.
- The thresholds of 8 kPa and 15 kPa optimally discriminated patients into low, medium, and high-risk groups. Forty percent of patients were at medium to high risk of poor clinical outcomes according to these thresholds.
- LSM by VCTE is a major, validated prognostic marker of PBC. Whether it can be used in trials as a surrogate endpoint for clinical benefit should be considered.



[Click here to access/download](#)

Supplementary material

JHEPAT-D-22-00477_R1_Supplement.docx





Click here to access/download

ICMJE disclosure form

JHEPAT-D-22-

00477_R1_coi_disclosure_Corpechot.docx

