



HAL
open science

Time to negative PCR conversion amongst high-risk patients with mild-to-moderate Omicron BA.1 and BA.2 COVID-19 treated with sotrovimab or nirmatrelvir

Guillaume Martin-Blondel, Anne-Geneviève Marcelin, Cathia Soulié, Sofia Kaiseridi, Clovis Lusivika-Nzinga, Karen Zafilaza, Céline Dorival, Laura Nailler, Anaïs Boston, Anne-Marie Ronchetti, et al.

► To cite this version:

Guillaume Martin-Blondel, Anne-Geneviève Marcelin, Cathia Soulié, Sofia Kaiseridi, Clovis Lusivika-Nzinga, et al.. Time to negative PCR conversion amongst high-risk patients with mild-to-moderate Omicron BA.1 and BA.2 COVID-19 treated with sotrovimab or nirmatrelvir. *Clinical Microbiology and Infection*, 2022, 10.1016/j.cmi.2022.12.016 . hal-03947698

HAL Id: hal-03947698

<https://hal.sorbonne-universite.fr/hal-03947698>

Submitted on 19 Jan 2023

HAL is a multi-disciplinary open access archive for the deposit and dissemination of scientific research documents, whether they are published or not. The documents may come from teaching and research institutions in France or abroad, or from public or private research centers.

L'archive ouverte pluridisciplinaire **HAL**, est destinée au dépôt et à la diffusion de documents scientifiques de niveau recherche, publiés ou non, émanant des établissements d'enseignement et de recherche français ou étrangers, des laboratoires publics ou privés.



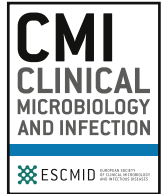
Since January 2020 Elsevier has created a COVID-19 resource centre with free information in English and Mandarin on the novel coronavirus COVID-19. The COVID-19 resource centre is hosted on Elsevier Connect, the company's public news and information website.

Elsevier hereby grants permission to make all its COVID-19-related research that is available on the COVID-19 resource centre - including this research content - immediately available in PubMed Central and other publicly funded repositories, such as the WHO COVID database with rights for unrestricted research re-use and analyses in any form or by any means with acknowledgement of the original source. These permissions are granted for free by Elsevier for as long as the COVID-19 resource centre remains active.



Contents lists available at ScienceDirect

Clinical Microbiology and Infection

journal homepage: www.clinicalmicrobiologyandinfection.com

Research note

Time to negative PCR conversion amongst high-risk patients with mild-to-moderate Omicron BA.1 and BA.2 COVID-19 treated with sotrovimab or nirmatrelvir

Guillaume Martin-Blondel^{1,2,*}, Anne-Geneviève Marcelin³, Cathia Soulié³, Sofia Kaisaridi⁴, Clovis Lusivika-Nzinga⁴, Karen Zafilaza³, Céline Dorival⁴, Laura Nailler⁵, Anaïs Boston⁵, Anne-Marie Ronchetti⁶, Cléa Melenotte⁷, André Cabié⁸, Christophe Choquet⁹, Albert Trinh-Duc¹⁰, Karine Lacombe¹¹, Géraldine Gaube¹, François Coustillères¹², Valérie Pourcher¹³, Jean-Philippe Martellosio¹⁴, Nathan Peiffer-Smadja¹⁵, Marie Chauveau^{16,17}, Pierre Housset¹⁸, Lionel Piroth^{19,20,21}, Mathilde Devaux²², Gilles Pialoux²³, Aurélie Martin²⁴, Vincent Dubee²⁵, Jérôme Frey²⁶, Audrey Le Bot²⁷, Charles Cazanave^{28,29}, Philippe Petua³⁰, Roland Liblau², Fabrice Carrat^{4,31}, Yuri Yordanov³²

¹ Service des Maladies Infectieuses et Tropicales, CHU de Toulouse, France

² Institut Toulousain des Maladies Infectieuses et Inflammatoires (Infinity) INSERM, Université Toulouse III, Toulouse, France

³ Sorbonne Université, INSERM, Institut Pierre Louis d'Epidémiologie et de Santé Publique, AP-HP, Hôpitaux Universitaires Pitié-Salpêtrière – Charles Foix, Laboratoire de Virologie, Paris, France

⁴ Sorbonne Université, INSERM, Institut Pierre Louis d'Epidémiologie et de Santé Publique (IPLESP), Paris, France

⁵ ANRS MIE (France Recherche Nord & Sud Sida-HIV Hépatites, Maladies Infectieuses Emergentes), Paris, France

⁶ Department of Clinical Hematology, Centre Hospitalier Sud-Francilien, Corbeil-Essonnes, France

⁷ Service de Maladies Infectieuses, Hôpital Necker Enfants malades, APHP, Paris, France

⁸ Université des Antilles INSERM PCEI UMR 1058 Université de Montpellier EFS, CHU de Martinique and INSERM, Fort-de-France, Martinique, France

⁹ Emergency Department, Bichat-Claude Bernard Hospital, Paris, France

¹⁰ Emergency Department, Hospital Centre of Agen, Agen, France

¹¹ Infectious Diseases Department, St Antoine Hospital, Sorbonne Université, INSERM IPLESP, Paris, France

¹² Service de Médecine Interne - Maladies Infectieuses, CHRU Tours, Tours, France

¹³ Service des Maladies Infectieuses et Tropicales, Hôpital de la Pitié Salpêtrière, Assistance Publique Hôpitaux de Paris, Université de Paris Sorbonne, Paris, France

¹⁴ Service de Médecine Interne, Maladies Infectieuses et Tropicales, Centre Hospitalier Universitaire de Poitiers, Poitiers, France

¹⁵ Infectious Disease Department, Bichat-Claude Bernard Hospital, Assistance Publique Hôpitaux de Paris, Paris, France

¹⁶ Department of Infectious Diseases, Hotel-Dieu Hospital, Nantes, France

¹⁷ INSERM, Nantes University Hospital, Nantes, France

¹⁸ Department of Nephrology, Centre Hospitalier Sud-Francilien, Corbeil-Essonnes, France

¹⁹ INSERM, Clinical Epidemiology/Clinical Trials Unit, Clinical Investigation Centre, Dijon University Hospital, Dijon, France

²⁰ Infectious Diseases Department, Dijon University Hospital, Dijon, France

²¹ Faculty of Medicine, University of Bourgogne-Franche-Comté, Dijon, France

²² CHI Poissy-Saint-Germain-en-Laye, Saint-Germain-en-Laye, France

²³ Département de Maladies Infectieuses, Hôpital Tenon, Assistance Publique Hôpitaux de Paris, Université de Paris Sorbonne, Paris, France

²⁴ Department of Infectious and Tropical Diseases, CHU Nîmes, University of Montpellier, Nîmes, France

²⁵ Department of Infectious Diseases, University Hospital of Angers, Angers, France

²⁶ Service des Urgences, Hôpital de Mercy - CHR Metz Thionville, France

²⁷ Infectious Diseases and Intensive Care Unit, Pontchaillou University Hospital, Rennes, France

²⁸ CHU de Bordeaux, Infectious and Tropical Diseases Department, Bordeaux, France

²⁹ University of Bordeaux, Microbiologie Fondamentale et Pathogénicité, Antimicrobial Resistance in Mycoplasmas and Gram-Negative Bacteria, Bordeaux, France

³⁰ Intensive Care Unit, Tarbes Hospital, Tarbes, France

³¹ Unité de Santé Publique, Hôpital Saint Antoine, Paris, France

³² Sorbonne Université, Hôpital Saint Antoine, Service d'Accueil des Urgences, INSERM, Institut Pierre Louis d'Epidémiologie et de Santé Publique, Paris, France

* Corresponding author. Pr Guillaume Martin-Blondel, Service des Maladies Infectieuses et Tropicales, CHU de Toulouse, Toulouse 31059, France.

E-mail address: martin-blondel.g@chu-toulouse.fr (G. Martin-Blondel).

<https://doi.org/10.1016/j.cmi.2022.12.016>

1198-743X/© 2022 European Society of Clinical Microbiology and Infectious Diseases. Published by Elsevier Ltd. All rights reserved.

ARTICLE INFO

Article history:

Received 12 October 2022

Received in revised form

13 December 2022

Accepted 20 December 2022

Available online xxx

Editor: L. Kaiser

Keywords:

Anti-viral treatment

COVID-19

Monoclonal antibodies

Nirmatrelvir

Sotrovimab

ABSTRACT

Objectives: Our aim was to compare the clinical and virological outcomes in Omicron BA.1- and BA.2-infected patients who received sotrovimab with those in patients who received nirmatrelvir for the prevention of severe COVID-19.

Methods: In this multi-centric, prospective ANRS 0003S CoCoPrev cohort study, patients at a high risk of progression of mild-to-moderate BA.1 or BA.2 COVID-19 who received sotrovimab or nirmatrelvir were included. The proportion of patients with progression to severe COVID-19, time between the start of treatment to negative PCR conversion, SARS-CoV-2 viral decay, and characterization of resistance variants were determined. A multi-variable Cox proportional hazard model was used to determine the time to negative PCR conversion and a mixed-effect model for the dynamics of viral decay.

Results: Amongst 255 included patients, 199 (80%) received ≥ 3 vaccine doses, 195 (76%) received sotrovimab, and 60 (24%) received nirmatrelvir. On day 28, new COVID-19-related hospitalization occurred in 4 of 193 (2%; 95% CI, 1–5%) sotrovimab-treated patients and 0 of 55 nirmatrelvir-treated patients (p 0.24). One out of the 55 nirmatrelvir-treated patients died (2%; 95% CI, 0–10%). The median time to negative PCR conversion was 11.5 days (95% CI, 10.5–13) in the sotrovimab-treated patients vs. 4 days (95% CI, 4–9) in the nirmatrelvir-treated patients ($p < 0.001$). Viral decay was faster in the patients who received nirmatrelvir ($p < 0.001$). In the multi-variable analysis, nirmatrelvir and nasopharyngeal PCR cycle threshold values were independently associated with faster conversion to negative PCR (hazard ratio, 2.35; 95% CI, 1.56–3.56; $p < 0.0001$ and hazard ratio, 1.05; 95% CI, 1.01–1.08; p 0.01, respectively).

Conclusions: Early administration of nirmatrelvir in high-risk patients compared with that of sotrovimab was associated with faster viral clearance. This may participate to decrease transmission and prevent viral resistance. **Guillaume Martin-Blondel, Clin Microbiol Infect 2023;■:1**

© 2022 European Society of Clinical Microbiology and Infectious Diseases. Published by Elsevier Ltd. All rights reserved.

Introduction

The neutralizing antibody sotrovimab, which targets the spike protein of SARS-CoV-2, and the protease inhibitor nirmatrelvir (associated with ritonavir) have been shown to reduce the risk of COVID-19-related hospitalization and death in unvaccinated outpatients at the risk of progression [1,2]. We recently reported in a prospective, real-life cohort study that after early administration of sotrovimab, the clinical and virological outcomes in high-risk patients with mild-to-moderate COVID-19 due to the Omicron BA.1 and BA.2 sub-lineages were similarly good [3]. Nirmatrelvir, for which the susceptibilities of the BA.1 and BA.2 sub-lineages were comparable with those of the ancestral strain [4], was shown to reduce the risk of severe COVID-19 during the Omicron surge in Israel [5]. Our aim was to compare the clinical and virological outcomes in Omicron BA.1- and BA.2-infected patients with mild-to-moderate COVID-19 who received sotrovimab with those in patients who received nirmatrelvir for the prevention of progression to severe COVID-19.

Methods

Our study was based on the “Agence Nationale de Recherche sur le SIDA et les hépatites virales” (ANRS) “Prévention des complications de la COVID-19” (CoCoPrev) study (NCT04885452 [6]), an ongoing multi-centric, prospective cohort study which includes patients at a high risk of severe COVID-19 and having PCR-proven mild-to-moderate COVID-19 in the first 5 days of symptoms. Treatment initiation was left at the treating physician's discretion. In this study, we included all patients infected with the Omicron BA.1 or BA.2 sub-lineage who received a single infusion of 500 mg of intravenous sotrovimab or 5 days of oral nirmatrelvir between 24 January 2022 and 5 May 2022. The outcome in most patients who received sotrovimab was previously reported [3]. The primary outcome was the proportion of patients with COVID-19-related hospitalization or death on day 28 after treatment administration.

The secondary outcomes were the time to negative conversion of nasopharyngeal SARS-CoV-2 PCR (defined as the first negative PCR conversion or with a cycle threshold [Ct] value of >31); predictive factors related to negative PCR conversion; dynamics of viral decay, estimated using the slope of changes over time in the Ct value, which was assessed using PCR; and genotypic characterization of resistant variants (please see supplementary material [3]). The survival time was calculated as the time from the start of treatment until the first negative PCR conversion. A multi-variable Cox proportional hazard model was used to estimate the effect of nirmatrelvir and sotrovimab on the time to negative PCR conversion, and Kaplan Meier curves were drawn. Mixed-effect models were used to estimate the temporal dynamics of the Ct value. The protocol was approved by the “CPP Sud-Est IV” Ethics Committee (Paris, France) and the French Regulatory Authority. Written informed consent was obtained from each patient before enrolment.

Results

The baseline characteristics of 255 consecutive patients are presented in Table S1. Of them, 195 (76%) received sotrovimab and 60 (24%) received nirmatrelvir.

The clinical outcomes 7 and 28 days after treatment administration are presented in Table S2. On day 28, 4 of 193 (2%; 95% CI, 1–5%) sotrovimab-treated patients and 0 of 55 nirmatrelvir-treated patients were hospitalized because of COVID-19 (p 0.24). A single patient from the nirmatrelvir-treated group died of COVID-19 (1/55; 2%; 95% CI, 0–10%). On day 7, a lower proportion of sotrovimab-treated patients experienced improvement of symptoms (127/193 [71%]) compared with that of patients who received nirmatrelvir (49/60 [89%], p 0.02).

The median time to negative nasopharyngeal PCR conversion was 11.5 days (95% CI, 10.5–13) amongst the patients who received sotrovimab and 4 days (95% CI, 4–9) amongst those who received nirmatrelvir (Fig. 1(a), $p < 0.0001$). The slope of Ct values of gene N, adjusted or not for age and immunosuppressive conditions, was

consistently steeper in the nirmatrelvir-treated group than in the sotrovimab-treated group (Fig. 1(b), $p < 0.001$). Finally, the proportion of patients who negatively converted their nasopharyngeal PCR on days 7, 14, and 21 was significantly higher amongst the nirmatrelvir-treated patients ($p < 0.0001$, $p < 0.01$, and $p < 0.02$, respectively; Table S2). Amongst BA.1-infected patients, the median time to PCR conversion was 12.5 days (95% CI, 10.5–14) in the sotrovimab-treated group and 5 days (95% CI, 1–12.5) in the nirmatrelvir-treated group (Fig. 1(c), $p < 0.01$). Amongst BA.2-infected patients, the median time was 10.5 (95% CI, 8–12.5) and 4 days (95% CI, 4–9), respectively. The slope of the Ct values of gene N was consistently steeper in the patients who received nirmatrelvir than in those who received sotrovimab (Fig. 1(d); $p < 0.003$ for BA.1-infected patients and $p < 0.001$ for BA.2-infected patients).

Nirmatrelvir and the nasopharyngeal PCR Ct values on day 0 were independently associated with faster conversion to negative PCR (hazard ratio, 2.35; 95% CI, 1.56–3.56; $p < 0.0001$ and hazard ratio, 1.05; 95% CI, 1.01–1.08; $p < 0.01$, respectively) after adjustments for age, immunosuppressive conditions, Omicron sub-lineage, time between the onset of symptoms and initiation of treatment, and Ct value of nasopharyngeal PCR on day 0 (Table 1). Although we previously reported the occurrence of mutations in the spike protein in sotrovimab-treated patients [3], no mutation in the protease was observed before conversion to negative PCR amongst 26 nirmatrelvir-treated patients with successful sequence amplification on day 0 and with at least 1 follow-up sample (median time, 7 days). No major side effect was reported by the treating physicians.

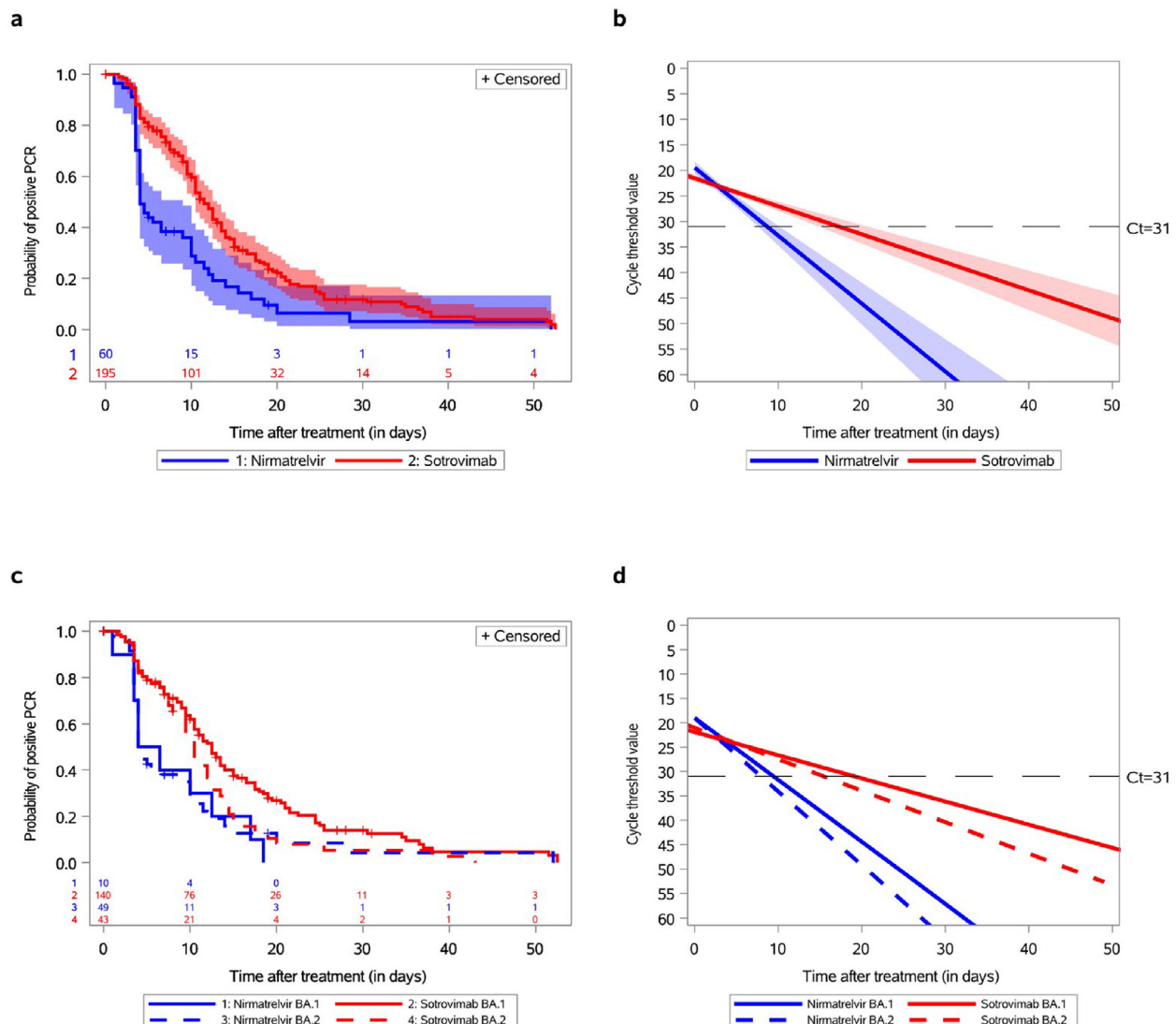


Fig. 1. Time to negative conversion of nasopharyngeal SARS-CoV-2 PCR and changes in cycle threshold (Ct) values of gene N according to treatment as well as Omicron BA.1 and BA.2 sub-lineages. (a) The survival probability plot for the event of negative PCR conversion amongst 60 Omicron-infected patients treated with nirmatrelvir and 195 Omicron-infected patients treated with sotrovimab (not adjusted on variables at baseline). The p for the log-rank test ($p < 0.0001$) indicates strong evidence of a significant difference between the survival curves. (b) Mixed model for Ct of gene N for 60 Omicron-infected patients treated with nirmatrelvir and 195 Omicron-infected patients treated with sotrovimab (not adjusted on variables at baseline). The p for the slope was < 0.0001 . After adjustment for age class and immunosuppression status at baseline, the p for the slope remained < 0.0001 . (c) The survival probability plots for the event of negative PCR conversion for 10 BA.1-infected patients treated with nirmatrelvir vs. 140 BA.1-infected patients treated with sotrovimab (the p for the log-rank test was 0.01) and for 49 BA.2-infected patients treated with nirmatrelvir vs. 43 BA.2-infected patients treated with sotrovimab (the p for the log-rank test was 0.1). The p was 0.06 for the comparison of BA.1- vs. BA.2-infected patients treated with sotrovimab and 0.84 for the comparison of BA.1- vs. BA.2-infected patients treated with nirmatrelvir. (d) Mixed model for Ct of gene N for 10 BA.1-infected and 49 BA.2-infected patients treated with nirmatrelvir and 140 BA.1-infected and 43 BA.2-infected patients treated with sotrovimab. The p for the slope was 0.003 for BA.1-infected patients and 0.001 for BA.2-infected patients. After adjustment for age class and immunosuppression status at baseline, the p for the slope remained at 0.003 and 0.001 respectively. Ct, cycle threshold.

Discussion

In this prospective, real-life cohort study of Omicron BA.1- and BA.2-infected patients at a very high risk of progression to severe COVID-19, although the frequency of COVID-19-related complications was equally low, early administration of nirmatrelvir compared with that of sotrovimab was associated with a faster decline in upper SARS-CoV-2 viral load, shorter time to negative nasopharyngeal PCR conversion, and higher proportion of patients with symptom alleviation 7 days after treatment start.

In our study, both the nirmatrelvir- and sotrovimab-treated patients, although at a high risk of severe COVID-19, experienced a low rate of COVID-19 progression, supporting the real-life effectiveness of both the strategies in Omicron BA.1 and BA.2 settings [3,5]. However, nirmatrelvir initiated in the first 5 days after the onset of symptoms accelerates viral clearance and independently increases the probability of negative PCR conversion compared with sotrovimab. Nirmatrelvir also had the greatest anti-viral activity compared with sotrovimab, remdesivir, and molnupiravir in another real-life observational study which was conducted in the same time period in Italy [7]. A shorter time to achieve low viral loads in nirmatrelvir-treated patients compared with that in untreated controls was shown in patients hospitalized for mild-to-moderate COVID-19 due to Omicron [8]. This could have 2 important consequences, in addition to the prevention of COVID-19 progression. First, reduced viral shedding may translate to decreased transmission, with a public health benefit [9]. Second, viral eradication may prevent the emergence of viruses resistant to nirmatrelvir through 3-chymotrypsin-like cysteine protease mutations [10]. Finally, nirmatrelvir used in combined therapies may prevent the emergence of variants escaping anti-spike mono-clonal antibodies in immunocompromised patients [11].

As experienced in another real-life study [7], nirmatrelvir- and sotrovimab-based strategies were not used in the same patients. Nirmatrelvir was prescribed mainly to BA.2-infected patients because the drug was made available under compassionate use authorization in France on 20 January 2022, when the BA.2 sub-lineage was beginning to replace the BA.1 sub-lineage, because lower *in vitro* neutralizing ability of sotrovimab on the BA.2 sub-lineage was demonstrated [12]. Although sotrovimab was associated with a low incidence of the progression of COVID-19 due to Omicron BA.2 amongst very-high-risk out-patients, with no emergence of mutations [3], the WHO recently made a strong recommendation against its use [13]. The low proportion of transplant recipients amongst nirmatrelvir-treated patients reflects complex ritonavir-mediated drug-drug interactions, representing an important limitation to its use [14]. In patients who could not receive

nirmatrelvir, molnupiravir [8], or remdesivir [15], all of which retain activity against the Omicron BA.4 or BA.5 sub-variant dominant since June 2022 [16] could be discussed. The use of bebtelovimab is now hampered by the emergence of the BQ.1.1 sub-variant [17].

Although our study is limited by the relatively small number of nirmatrelvir-treated patients, we believe that the high-risk profile of the treated patients and the comparison with sotrovimab are of interest. Although the slopes of the Ct values of gene N of the BA.1 and BA.2-infected patients were consistently steeper amongst the nirmatrelvir-treated patients, the median time to PCR conversion amongst the BA.2-infected patients did not significantly differ between the nirmatrelvir- and sotrovimab-treated patients, presumably because of lack of statistical power. No symptomatic rebound of COVID-19 was observed after nirmatrelvir completion; however, our study was not designed to capture viral load rebound with potential mutations after conversion to negative PCR. Finally, residual confounding biases related to the cohort study's design may have been underestimated.

In conclusion, although both the strategies were associated with a low frequency of progression to severe COVID-19, nirmatrelvir was associated with faster viral clearance compared with sotrovimab.

Author contributions

GM-B (guarantor), A-GM, CS, and CD, LN, AB, FC, and YY (guarantor) were involved in study conception, data extraction, data analysis, interpretation of results, and drafting of the manuscript. SK was involved in data extraction, data analysis, interpretation of results, and drafting of the manuscript. CL-N was involved in data extraction, data analysis, interpretation of results, and drafting of the manuscript. CM, AC, CC, FC, J-PM, GG, AT-D, A-MR, VP, FC, KL, NP-S, PH, AP, GP, AM, VD, MD, JF, and CC were involved in patient inclusion and revising the manuscript. RL was involved in the study conception, interpretation of results, and revising the manuscript.

Transparency declaration

The authors declare that they have no conflicts of interest. The "Agence Nationale de Recherche sur le SIDA et les hépatites virales" (ANRS) "Prévention des complications de la COVID-19" (CoCoPrev) study was conducted with the support of ANRS | MIE and funded by French ministries: Ministère des Solidarités et de la Santé and Ministère de l'Enseignement Supérieur, de la Recherche et de l'Innovation.

Acknowledgements

We thank Pr Yazdan Yazdanpanah and the ANRS-MIE team for their invaluable support and help. This study would have not been possible without the teams involved in the "Prévention des complications de la COVID-19" (CoCoPrev) study and designated as the CoCoPrev Study Group: Magali Garcia, Valentin Giraud, Agathe Metais, France Cazenave-Roblot, and Jean-Philippe Martellosio (CHU de Poitiers); Anne-Marie Ronchetti, Thomas Gabas, Naima Hadjadj, Célia Salanoubat, Amélie Chabrol, Pierre Housset, Agathe Pardon, Anne-Laure Faucon, Valérie Caudwell, and Latifa Hanafi (CHU Sud-Francilien, Corbeil-Essonnes); Laurent Alric, Grégory Pugno, Morgane Mourguet, Eva Bories, Delphine Bonnet, Sandrine Charpentier, Pierre Delobel, Alexa Debar, Colleen Beck, Xavier Boumaza, Stella Rousset, and Aurore Perrot (CHU de Toulouse); Fanny Lanternier, Claire Delage, Elisabete Gomes Pires, Morgane Chaminant, and Nathalie Chavarot (Hôpital Necker, Paris); Anthony Chauvin and Xavier Eyer; Véronique Delcey (Hôpital Lariboisière, Paris); Simon Bessis and Romain Gueneau (Hôpital du Kremlin Bicêtre); Pelagie Thibaut, Marine Nadal, Martin Siguier, Marwa

Table 1

Survival analysis for the effect of nirmatrelvir and sotrovimab on the risk of negative PCR conversion (adjusted for age class, immunosuppression status, Omicron sub-lineage, time between the onset of symptoms and initiation of treatment, and cycle threshold value of nasopharyngeal PCR on day 0)

Variable		Hazard ratio	95% CI	p
Treatment	Nirmatrelvir vs. sotrovimab	2.35	1.56–3.56	<0.0001
Age (y)	≥80 vs. <80	0.71	0.45–1.15	0.17
Immunosuppressive conditions	Yes vs. no	0.63	0.43–0.91	0.01
Omicron sub-lineage	BA.2 vs. BA.1	1.51	1.12–2.01	0.01
Time between symptoms and initiation of treatment		0.99	0.88–1.08	0.90
Ct value of nasopharyngeal PCR on day 0		1.05	1.01–1.08	0.01

Ct, cycle threshold.

Bachir, and Christia Palacios (Hôpital Tenon, Paris); Valérie Pourcher, Cléa Melenotte, Antoine Faycal, Vincent Berot, Cécile Brin, Siham Djebara, Karen Zafilaza, Stéphane Marot, Sophie Sayon, Valentin Leducq, Isabelle Malet, Elisa Teyssou, and Adélie Gothland (Hôpital de la Pitié Salpêtrière, Paris); Karine Lacombe, Yasmine Abi Aad, Thibault Chiarabini, Raynald Feliho, Nadia Valin, Fabien Brigant, Julien Boize, Pierre-Clément Thiébaud, Marie Moreau, and Charlotte Billard (Hôpital St Antoine, Paris); Nathalie De Castro, Geoffroy Liégeon, Blandine Denis, Jean-Michel Molina, and Lucia Etheve (Hôpital Saint Louis, Paris); André Cabié, Sylvie Abel, Ornella Cabras, Karine Guitteaud, and Sandrine Pierre-François (CHU de Martinique); Vincent Dubee, Diama Ndiaye, Jonathan Pehlivan, Michael Phelippeau, and Rafael Mahieu (CHU d'Angers); Alexandre Duvignaud, Thierry Piston, Arnaud Desclaux, Didier Neau, Charles Cazanave (CHU de Bordeaux); Jean-François Faucher, Benjamin Festou, Magali Dupuy-Grasset, Véronique Loustaud-Ratti, and Delphine Chainier (CHU de Limoges); Nathan Peiffer-Smadja, Christophe Choquet, Olivia Da Conceicao, Michael Thy, Lio Collas, Cindy Godard, Donia Bouzid, Vittiaroat Ing, Laurent Pereira, Thomas Pavlowsky, and Camille Ravaut (Hôpital Bichat, Paris); Antoine Asquier-Khati, David Bouteille, Marie Chauveau, Colin Deschavres, and François Raffi (CHU de Nantes); Audrey Le Bot, Marine Cailleaux, François Benezit, Anne Maillard, Benoit Hue, and Pierre Tattevin (CHU de Rennes); François Coustilleres, Claudia Carvalho-Schneider, Simon Jamard, Laetitia Petit, and Karl Stefic (CHU de Tours); Natacha Mrozek, Clement Theis, Magali Vidal, Leo Sauvats, and Delphine Martineau (CHU de Clermond-Ferrand); Benjamin Lefèvre, Guillaume Baronnet, and Agnès Didier (CHRU de Nancy); Florence Ader, Thomas Perpoint, Anne Conrad, Paul Chabert, and Pierre Chauvelot (CHU de Lyon); Aurélie Martin, Paul Loubet, Julien Mazet, Romaric Larcher, and Didier Laureillard (CHU de Nîmes); Mathilde Devaux (Hôpital de Poissy); Jérôme Frey, Amos Woerlen, Aline Remillon, Laure Absensur-Vuillaume, and Pauline Bouquet (CHU de Metz); Albert Trinh-Duc and Patrick Rispal (Hôpital d'Agen); Philippe Petua and Julien Carillo (Hôpital de Tarbes); Aurore Perrot, Karen Delavigne, Pierre Cougoul, Jérémie Dion, Odile Rauzy (Oncopole, Toulouse), Mathieu Blot, Thibault Sixt, Florian Moretto, Carole Charles, and Lionel Piroth (CHU de Dijon); Sophie Circosta, Lydia Leger, Arulvani Arulananthan, Carine Lascoux, Pascale Valérie, and Léia Becam (Team Biobanque ANRS-INSERM US19, Villejuif); Yazdan Yazdanpanah, Ventzislava Petrov-Sanchez, Alpha Diallo, Soizic Le Mestre, and Guillaume Le Meut (ANRS-MIE); and Isabelle Goderel, Frédéric Chau, Brahim Soltana, Jessica Chane Tang (IPLESP), Jeremie Guedj (Université de Paris, IAME, INSERM, Paris), and Yvanie Caille (Renaloo).

Appendix A. Supplementary data

Supplementary data to this article can be found online at <https://doi.org/10.1016/j.cmi.2022.12.016>.

References

- [1] Gupta A, Gonzalez-Rojas Y, Juarez E, Casal MC, Moya J, Falci DR, et al. Effect of sotrovimab on hospitalization or death among high-risk patients with mild to moderate COVID-19. *JAMA* 2022;327:1236–46. <https://doi.org/10.1001/jama.2022.2832>.
- [2] Hammond J, Leister-Tebbe H, Gardner A, Abreu P, Bao W, Wisemandle W, et al. Oral nirmatrelvir for high-risk, nonhospitalized adults with Covid-19. *N Engl J Med* 2022;386:1397–408. <https://doi.org/10.1056/NEJMoa2118542>.
- [3] Martin-Blondel G, Marcelin AG, Soulie C, Kaisaridi S, Lusivika-Nzinga C, Dorival C, et al. Sotrovimab to prevent severe COVID-19 in high-risk patients infected with Omicron BA.2. *J Infect* 2022;85:e104–8. <https://doi.org/10.1016/j.jinf.2022.06.033>.
- [4] Takashita E, Kinoshita N, Yamayoshi S, Sakai-Tagawa Y, Fujisaki S, Ito M, et al. Efficacy of antiviral agents against the SARS-CoV-2 Omicron subvariant BA.2. *N Engl J Med* 2022;386:1475–7. <https://doi.org/10.1056/NEJMc2201933>.
- [5] Arbel R, Sagy YW, Hoshen M, Battat E, Lavie G, Sergienko R, et al. Nirmatrelvir use and severe Covid-19 outcomes during the omicron surge. *N Engl J Med* 2022;387:790–8. <https://doi.org/10.1056/NEJMoa2204919>.
- [6] Martin-Blondel G, Marcelin AG, Soulie C, Kaisaridi S, Lusivika-Nzinga C, Dorival C, et al. *J Infect* 2022;85:e104–8. <https://doi.org/10.1016/j.jinf.2022.06.033>.
- [7] Mazzotta V, Cozzi Lepri A, Colavita F, Rosati S, Lalle E, Cimaglia C, et al. Viral load decrease in SARS-CoV-2 BA.1 and BA.2 Omicron sublineages infection after treatment with monoclonal antibodies and direct antiviral agents. *J Med Virol* 2022;95:e28186. <https://doi.org/10.1002/jmv.28186>.
- [8] Wong CK, Au IC, Lau KT, Lau EH, Cowling BJ, Leung GM. Real-world effectiveness of early molnupiravir or nirmatrelvir-ritonavir in hospitalised patients with COVID-19 without supplemental oxygen requirement on admission during Hong Kong's omicron BA.2 wave: a retrospective cohort study. *Lancet Infect Dis* 2022;22:1681–93. [https://doi.org/10.1016/S1473-3099\(22\)00507-2](https://doi.org/10.1016/S1473-3099(22)00507-2).
- [9] Marc A, Kerioui M, Blanquart F, Bertrand J, Mitja O, Corbacho-Monne M, et al. Quantifying the relationship between SARS-CoV-2 viral load and infectiousness. *Elife* 2021;10:e69302. <https://doi.org/10.7554/eLife.69302>.
- [10] Iketani S, Mohri H, Culbertson B, Hong SJ, Duan Y, Luck MI, et al. Multiple pathways for SARS-CoV-2 resistance to nirmatrelvir. *Nature* 2022 Nov 9. <https://doi.org/10.1038/s41586-022-05514-2>. Online ahead of print.
- [11] Gliga S, Luebke N, Killer A, Gruell H, Walker A, Dilthey AT, et al. *Clin Infect Dis* 2022. Oct 3:ciac802. <https://doi.org/10.1093/cid/ciac802>. Online ahead of print.
- [12] Bruel T, Hadjadj J, Maes P, Planas D, Seve A, Staropoli I. Serum neutralization of SARS-CoV-2 Omicron sublineages BA.1 and BA.2 in patients receiving monoclonal antibodies. *Nat Med* 2022;28:1297–302. <https://doi.org/10.1038/s41591-022-01792-5>.
- [13] Agarwal A, Rochweg B, Lamontagne F, Siemieniuk RA, Agoritsas T, Askie L, et al. A living WHO guideline on drugs for covid-19. *BMJ* 2020;370:m3379. <https://doi.org/10.1136/bmj.m3379>.
- [14] Lim S, Tignanelli CJ, Hoertel N, Boulware DR, Usher MG. Prevalence of medical contraindications to nirmatrelvir/ritonavir in a cohort of hospitalized and nonhospitalized patients with COVID-19. *Open Forum Infect Dis* 2022;9:ofac389. <https://doi.org/10.1093/ofid/ofac389>.
- [15] Gottlieb RL, Vaca CE, Paredes R, Mera J, Webb BJ, Perez G, et al. Early remdesivir to prevent progression to severe Covid-19 in outpatients. *N Engl J Med* 2022;386:305–15. <https://doi.org/10.1056/NEJMoa2116846>.
- [16] Takashita E, Yamayoshi S, Simon V, Van Bakel H, Sordillo EM, Pekosz A, et al. Efficacy of antibodies and antiviral drugs against omicron BA.2.12.1, BA.4, and BA.5 subvariants. *N Engl J Med* 2022;387:468–70. <https://doi.org/10.1056/NEJMc2207519>.
- [17] Planas D, Bruel T, Staropoli I, Guivel-Benhassine F, Porrot F, Maes P, et al. 2022.11.17.516888 bioRxiv 2022 Nov 21. <https://doi.org/10.1101/2022.11.17.516888>.