



**HAL**  
open science

# An antibody free approach to probe the presence of poly-ubiquitin chains on *C. elegans* sperm derived organelles after fertilization

Justine Cailloce, Fanny Husson, Vincent Galy, Jorge Merlet

## ► To cite this version:

Justine Cailloce, Fanny Husson, Vincent Galy, Jorge Merlet. An antibody free approach to probe the presence of poly-ubiquitin chains on *C. elegans* sperm derived organelles after fertilization. *microPublication Biology*, 2023, 10.17912/micropub.biology.000972 . hal-04222284

**HAL Id: hal-04222284**

**<https://hal.sorbonne-universite.fr/hal-04222284>**

Submitted on 29 Jan 2024

**HAL** is a multi-disciplinary open access archive for the deposit and dissemination of scientific research documents, whether they are published or not. The documents may come from teaching and research institutions in France or abroad, or from public or private research centers.

L'archive ouverte pluridisciplinaire **HAL**, est destinée au dépôt et à la diffusion de documents scientifiques de niveau recherche, publiés ou non, émanant des établissements d'enseignement et de recherche français ou étrangers, des laboratoires publics ou privés.

# An antibody free approach to probe the presence of poly-ubiquitin chains on *C. elegans* sperm derived organelles after fertilization

Justine Cailloce<sup>1</sup>, Fanny Husson<sup>1</sup>, Vincent Galy<sup>1§</sup>, Jorge Merlet<sup>1§</sup>

<sup>1</sup>Sorbonne Université, CNRS, Institut de Biologie Paris Seine, IBPS, Developmental Biology Laboratory, UMR7622, Paris, France

<sup>§</sup>To whom correspondence should be addressed: [vincent.galy@sorbonne-universite.fr](mailto:vincent.galy@sorbonne-universite.fr); [jorge.merlet@sorbonne-universite.fr](mailto:jorge.merlet@sorbonne-universite.fr)

## Abstract

Upon *C. elegans*'s oocyte fertilization, the sperm brings mitochondria and membranous organelles (MOs) which are rapidly eliminated by autophagy. Their poly-ubiquitylation is suspected to be a signal for their recognition and degradation but mitochondria poly-ubiquitylation remains debated. Using fluorescent Tandem-repeated Ubiquitin-Binding Entities (TUBEs) we confirmed the presence of K48- and K63-ubiquitin chains on MOs contrasting with the absence of signal on sperm mitochondria. This new and sensitive approach confirmed the poly-ubiquitylation of the MOs while providing additional arguments for the absence of substantial poly-ubiquitylation of sperm-derived mitochondria, suggesting that K63- and K48-poly-ubiquitylation are unlikely acting as a common targeting signal for their degradation.

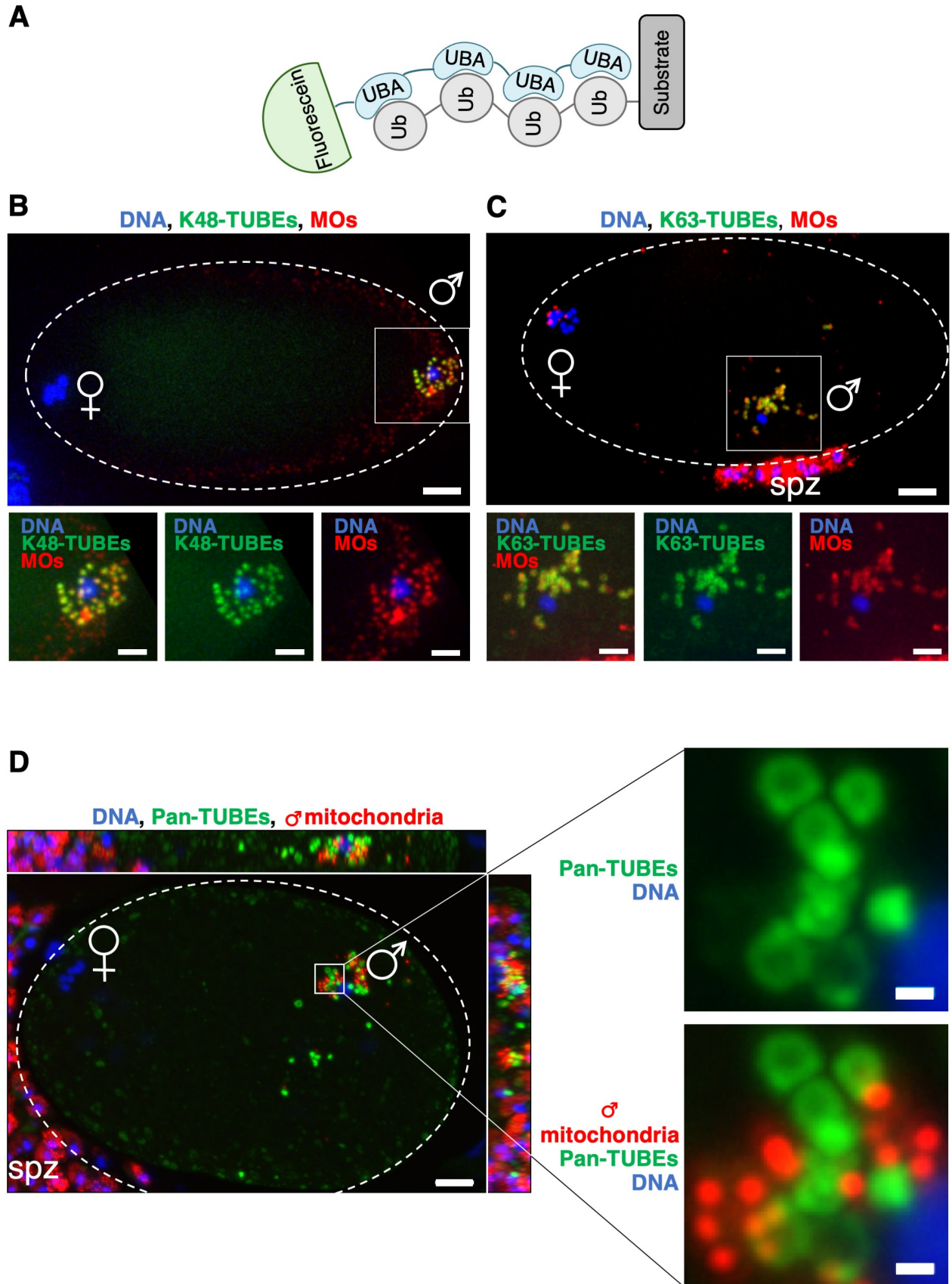


Figure 1. Poly-ubiquitin chains labelling on sperm derived organelles in early *C. elegans* embryos:

(A) Scheme of the Tandem-repeated Ubiquitin-Binding Entities (TUBEs) fused to fluorescein used to localize and visualize poly-ubiquitin chains. TUBEs are tetramerized ubiquitin association (UBA) domains with flexible poly-glycine links which bind poly-ubiquitin chains on substrates. Early *C. elegans* embryos labelled K48-TUBEs (B) or K63-TUBEs (C) (Green) showed a strong poly-ubiquitylation on MOs (red) for both K48- and K63-poly-ubiquitin chains. (D) In contrast, no poly-ubiquitin signal with Pan-TUBEs probes (green) was observed on sperm derived mitochondria (red) in early *C. elegans* embryos. The green rings observed are most likely poly-ubiquitylated MOs. Scale bars represent 5  $\mu\text{m}$  in full embryo images and 2  $\mu\text{m}$  in inserts. ♀ and ♂ signs on images mark the presence of the respective pronuclei. Spz indicates spermatozoa outside the embryo. All images are maximum intensity projection images.

## Description

In *C. elegans*, like in most animal species, mitochondria and their genomes are inherited from the mother via oocyte's mitochondria transmission. This uniparental transmission occurs despite the entry of sperm mitochondria and their genomes upon fertilization of the oocyte. Several mechanisms participate to specifically remove the spermatozoid contribution. Among the most conserved ones are the reduction of the sperm mtDNA load by a mitochondrial endonuclease and the specific recognition and degradation of sperm mitochondria in the oocyte via proteolytic pathways involving autophagy factors (Al Rawi et al. 2011; Sato and Sato 2011; DeLuca and O'Farrell 2012; Politi et al. 2014; Herpin et al. 2015). *C. elegans* relies on both types of mechanisms with a major contribution of allophagy, a specific type of autophagy. Interestingly in *C. elegans*, allophagy targets simultaneously the sperm mitochondria and other nematode specific sperm organelles: the Membranous Organelles (MOs) (Al Rawi et al. 2011; Sato and Sato 2011). MOs are Golgi-derived membranous structures that partially fuse with the plasma membrane during the maturation of spermatocytes into mature spermatozoa (Wolf et al. 1978; Ward et al. 1981). Both sperm organelles are rapidly eliminated after fertilization. However, the recognition signal(s) remain(s) unknown.

The implication of the poly-ubiquitylation of mitochondrial proteins in the recognition of the sperm-derived mitochondria was proposed in several mammalian species (Sutovsky et al. 1999). Furthermore, since poly-ubiquitylation of mitochondria is a known mark for mitophagy in somatic cells (Kwon and Ciechanover 2017) the possible role of ubiquitin have been investigated. Several independent studies tested this hypothesis in *C. elegans* but no definitive conclusions were reached. Using specific anti-poly-ubiquitin antibodies, MOs but not the sperm mitochondria were described as poly-ubiquitylated (Al Rawi et al. 2011; Sato and Sato 2011; Molina et al. 2019) after their entry in the oocyte. While a newer study, using over-expressed GFP::ubiquitin fusion protein, described a very faint GFP::ubiquitin signal on sperm mitochondria compared to the bright GFP::ubiquitin signal surrounding the MOs (Sato et al. 2018).

In order to clarify if sperm mitochondria are decorated with poly-ubiquitin chains that could serve as a signal for the recruitment of the autophagy machinery, we used a highly sensitive and specific antibody free approach (Hjerpe et al. 2009) to analyze the poly-ubiquitylation status of sperm organelles in the 1 cell stage *C. elegans* embryos. Tandem-repeated Ubiquitin-Binding Entities (TUBEs) consist of tetramerized Ubiquitin-Binding Associated (UBA) domains separated by flexible linkers (Figure 1A). They show a high affinity for poly-ubiquitin chains (Hjerpe et al. 2009). Different types of TUBEs have been generated that recognize all poly-ubiquitin chains (Pan-TUBEs) but also specifically K48 or K63 chains (Hjerpe et al. 2009; Sims et al. 2012). About 20 different families of domains able to bind ubiquitin have been described which allows to discriminate within the ubiquitin chain structure diversity and complexity observed *in vivo*. Thus, the K48-TUBEs have 100-fold preference for K48 linkage and K63-TUBEs >1 000-fold preference for K63 linkage over other linkage types. We used TUBEs fused to fluorescein as an alternative to antibodies and GFP::ubiquitin strains to probe for the presence of poly-ubiquitylated proteins on sperm organelles after fertilization.

We set up a protocol to label early *C. elegans* embryos with TUBEs. MOs visualized using a specific antibody, were clearly labeled with the K48- and K63-poly-ubiquitin specific probes (Figure 1B and 1C). These results confirmed previous observations (Al Rawi et al. 2011; Sato and Sato 2011; Hajjar et al. 2014; Molina et al. 2019) validating the use of TUBEs to detect poly-ubiquitylated proteins in *C. elegans*. Interestingly, since no additional signal was seen beside the MO-associated signal, this was strongly suggesting the absence of K48 and K63 poly-ubiquitin chains associated with sperm mitochondria. This was confirmed using the Pan-TUBEs probe and a more resolute and sensitive microscope. As shown in Figure 1D, while the Pan-ubiquitin fluorescent probe nicely decorated structures corresponding to the MOs, we did not detect any signal colocalizing with the fluorescently labeled sperm mitochondria. In addition, the Pan-TUBEs did not label any structure on mature spermatozoa outside the embryo (Figure 1D), confirming also previous observations showing that poly-ubiquitylation on MOs only occurs after their entry in the oocyte (Al Rawi et al. 2011). These experiments demonstrate that in the one cell stage embryo, while MOs are massively poly-ubiquitylated, the sperm mitochondria are not poly-ubiquitylated or at a sub-detectable level.

Probing the presence of poly-ubiquitin chains in early *C. elegans* embryos using TUBEs represent a new sensitive and specific method to label endogenous poly-ubiquitin chains. It allowed us to confirm that before the recruitment of the autophagy machinery, MOs and sperm derived mitochondria are not equivalent regarding poly-ubiquitylation. MOs are highly poly-ubiquitylated whereas sperm mitochondria do not present any detectable signal. Therefore, our results suggest that the poly-ubiquitylation of a mitochondrial component is unlikely or at a very low level. TUBEs may therefore become instrumental in future studies to interfere with the degradation of poly-ubiquitylated proteins and test the impact on the clearance of MOs and sperm-derived mitochondria and the functional consequences *in vivo*. It must be noted that even if the Pan-TUBEs should recognize all types of poly-ubiquitin chains and not only K48 and K63 chains, as well as mono-ubiquitylation or multiple mono-ubiquitylation when they are the main population (Hjerpe et al. 2009), we cannot exclude that, in the cellular context of the early *C. elegans* embryo, the recognition of other poly-ubiquitin chains K6, K11, K27, K29, K33 or M1 would only be accomplished by a specific construction and not by the Pan-TUBEs we used. Therefore, even if we cannot completely rule-out that poly-ubiquitylation could be involved in targeting sperm-derived mitochondria to the allophagy machinery the molecular nature of the signal(s) harbored by sperm mitochondria will have to be identified using genetic or biochemical approaches.

## Methods

### *C. elegans* strains and maintenance

Two different *Caenorhabditis elegans* strains were used, the wild-type Bristol [N2](#) strain and the [CU607](#) strain ([smIs23 \[pkd-2::gfp\] II; him-5\(e1490\) V](#)). [CU607](#) contains the [him-5\(e1490\)](#) allele which allows a higher frequency of males in the population and the [smIs23](#) transgene which allows a male specific GFP expression in neurons (not required in this study). Both strains were maintained under standard conditions at 15° or 20°C on Nematode Growth Media plates seeded with [OP50](#) bacteria (Brenner 1974).

### CMXRos staining of male mitochondria

For red fluorescence staining of mitochondria, young adult males [CU607](#) were cultivated for 12 to 15 hours on NGM plates containing Mitotracker Red CMXRos (1 µg/mL), seeded with [OP50](#) bacteria and protected from light.

### Staining and Immunofluorescence

Males with CMXRos labelled mitochondria were mated overnight at 15°C with young [N2](#) adult hermaphrodites. Gravid hermaphrodites were then dissected on poly-L-lysine coated glass slides (poly-L-lysine 1 g/L, gelatin 2%, chromium III 0.2 g/L, sodium azide 1 mM) in meiosis buffer (Leibowitz L-15 60%, inulin 0.5 mg/mL, HEPES 25 mM (pH=7.4), FBS 20%). Embryos were permeabilized by freeze crack, fixed in cold methanol for 20 minutes at -20°C, washed with PBS-T (PBS with 0.1% Tween 20) and blocked in PBS-T-milk (5% milk). Embryos were washed in PBS-T and incubated in a wet chamber protected from light for 2 hours at room temperature in PBS-T containing fluorescein labelled TUBEs (1/1000). For MOs staining, SP56 anti-MO (1/100) was added together with TUBEs, slides were washed in PBS-T and incubated for 1 h at room temperature with anti-mouse Alexa 633 (1/800). Slides were then washed twice in PBS-T, once in PBS and mounted in Vectashield® antifade mounting medium with DAPI (Vector) to label DNA. Finally, slides were covered with a coverslip and sealed with Va-La-P (Vaselin-Lanolin-Parafin, 1:1:1) (Askjaer et al. 2014).

### Images Acquisitions

Embryos with TUBEs and MOs staining were imaged on a Zeiss Cell Observer spinning disk microscope equipped with a Yokogawa CSU-X1 spinning disk head, an Evolve EM CCD camera and a 1.46 NA 100X oil-immersion objective. Embryos with TUBEs and CMXRos labelled mitochondria were imaged on a Zeiss Axio Observer Z1 equipped with an Apotome module, an AxioCam 506 monochrome cooled CCD camera and a 1.4 NA 100X oil-immersion objective. Maximum intensity Z-projections from multichannel stacks of images every 0.4 µm (spinning disk) or 0.24 µm (Apotome) are presented. All images were processed with Zen software (blue edition).

## Reagents

List of strains

| STRAIN             | GENOTYPE | AVAILABLE FROM |
|--------------------|----------|----------------|
| <a href="#">N2</a> |          | CGC            |



|                       |  |  |
|-----------------------|--|--|
| <a href="#">CU607</a> | <a href="#">smls23</a> [pkd-2::gfp] II; <a href="#">him-5(e1490)</a> V | Gift from Dr. D. Xue (Univ. Colorado, USA) (Peden et al. 2007) |
|-----------------------|--|--|

#### List of Antibodies

| ANTIBODY                  | ANIMAL AND CLONALITY       | DESCRIPTION   |
|---------------------------|----------------------------|---|
| Anti-MO (SP56)            | Mouse mono-clonal antibody | Recognize MOs, gift from S. Strome (Univ. of California Santa Cruz, USA) (Ward et al. 1986) |
| Goat anti-mouse Alexa 633 | Goat polyclonal antibody   | FisherScientific # A-21050  |

#### List of reagents/chemicals

| NAME                                      | SOURCE           | IDENTIFIER    |
|---|------------------|---------------|
| PAN selective TUBEs-(TUBEs 2 fluorescein) | LifeSensors      | UM-0502F-0050 |
| K63-TUBEs-fluorescein                     | LifeSensors      | UM-0504F-0050 |
| K48-TUBEs-fluorescein                     | LifeSensors      | UM-0507F-0050 |
| MitoTracker Red CMXRos                    | FisherScientific | # 11569106    |

**Acknowledgements:** We are very grateful to R. Zamy for valuable technical assistance. N2 worms were provided by the Caenorhabditis Genetic Center, which is funded by NIH Office of Research Infrastructure Programs, USA (P40 OD010440) and CU607 strain is a gift from Dr. D. Xue (Univ. Colorado, USA). We are very grateful to Pr. S. Strome (Univ. of California Santa Cruz, USA) for giving us SP56 antibody.

#### References

- Al Rawi S, Louvet-Vallée S, Djeddi A, Sachse M, Culetto E, Hajjar C, et al., Galy. 2011. Postfertilization Autophagy of Sperm Organelles Prevents Paternal Mitochondrial DNA Transmission. *Science* 334: 1144-1147. DOI: [10.1126/science.1211878](https://doi.org/10.1126/science.1211878)
- Askjaer P, Galy V, Meister P. 2014. Modern Tools to Study Nuclear Pore Complexes and Nucleocytoplasmic Transport in *Caenorhabditis elegans*. *Methods in Cell Biology, Nuclear Pore Complexes and Nucleocytoplasmic Transport - Methods* : 277-310. DOI: [10.1016/B978-0-12-417160-2.00013-8](https://doi.org/10.1016/B978-0-12-417160-2.00013-8)
- Brenner S. 1974. The genetics of *Caenorhabditis elegans*. *Genetics* 77: 71-94. PubMed ID: [4366476](https://pubmed.ncbi.nlm.nih.gov/4366476/)
- DeLuca SZ, O'Farrell PH. 2012. Barriers to Male Transmission of Mitochondrial DNA in Sperm Development. *Developmental Cell* 22: 660-668. DOI: [10.1016/j.devcel.2011.12.021](https://doi.org/10.1016/j.devcel.2011.12.021)
- Hajjar C, Sampuda KM, Boyd L. 2014. Dual roles for ubiquitination in the processing of sperm organelles after fertilization. *BMC Developmental Biology* 14: 10.1186/1471-213x-14-6. DOI: [10.1186/1471-213X-14-6](https://doi.org/10.1186/1471-213X-14-6)
- Herpin A, Englberger E, Zehner M, Wacker R, Gessler M, Schard M. 2015. Defective autophagy through *epg5* mutation results in failure to reduce germ plasm and mitochondria. *The FASEB Journal* 29: 4145-4161. DOI: [10.1096/fj.14-265462](https://doi.org/10.1096/fj.14-265462)
- Hjerpe R, Aillet F, Lopitz-Otsoa F, Lang V, England P, Rodriguez MS. 2009. Efficient protection and isolation of ubiquitylated proteins using tandem ubiquitin-binding entities. *EMBO reports* 10: 1250-1258. DOI: [10.1038/embo.2009.192](https://doi.org/10.1038/embo.2009.192)
- Kwon YT, Ciechanover A. 2017. The Ubiquitin Code in the Ubiquitin-Proteasome System and Autophagy. *Trends in Biochemical Sciences* 42: 873-886. DOI: [10.1016/j.tibs.2017.09.002](https://doi.org/10.1016/j.tibs.2017.09.002)

- Molina P, Lim Y, Boyd L. 2019. Ubiquitination is required for the initial removal of paternal organelles in *C. elegans*. *Developmental Biology* 453: 168-179. DOI: [10.1016/j.ydbio.2019.05.015](https://doi.org/10.1016/j.ydbio.2019.05.015)
- Peden E, Kimberly E, Gengyo-Ando K, Mitani S, Xue D. 2007. Control of sex-specific apoptosis in *C. elegans* by the BarH homeodomain protein CEH-30 and the transcriptional repressor UNC-37/Groucho. *Genes & Development* 21: 3195-3207. DOI: [10.1101/gad.1607807](https://doi.org/10.1101/gad.1607807)
- Politi Y, Gal L, Kalifa Y, Ravid L, Elazar Z, Arama E. 2014. Paternal Mitochondrial Destruction after Fertilization Is Mediated by a Common Endocytic and Autophagic Pathway in *Drosophila*. *Developmental Cell* 29: 305-320. DOI: [10.1016/j.devcel.2014.04.005](https://doi.org/10.1016/j.devcel.2014.04.005)
- Sato M, Sato K. 2011. Degradation of Paternal Mitochondria by Fertilization-Triggered Autophagy in *C. elegans* Embryos. *Science* 334: 1141-1144. DOI: [10.1126/science.1210333](https://doi.org/10.1126/science.1210333)
- Sato M, Sato K, Tomura K, Kosako H, Sato K. 2017. The autophagy receptor ALLO-1 and the IKKE-1 kinase control clearance of paternal mitochondria in *Caenorhabditis elegans*. *Nature Cell Biology* 20: 81-91. DOI: [10.1038/s41556-017-0008-9](https://doi.org/10.1038/s41556-017-0008-9)
- Sims JJ, Scavone F, Cooper EM, Kane LA, Youle RJ, Boeke JD, Cohen RE. 2012. Polyubiquitin-sensor proteins reveal localization and linkage-type dependence of cellular ubiquitin signaling. *Nature Methods* 9: 303-309. DOI: [10.1038/nmeth.1888](https://doi.org/10.1038/nmeth.1888)
- Sutovsky P, Moreno RD, Ramalho-Santos Jo, Dominko T, Simerly C, Schatten G. 1999. Ubiquitin tag for sperm mitochondria. *Nature* 402: 371-372. DOI: [10.1038/46466](https://doi.org/10.1038/46466)
- Ward S, Argon Y, Nelson GA. 1981. Sperm morphogenesis in wild-type and fertilization-defective mutants of *Caenorhabditis elegans*. *The Journal of cell biology* 91: 26-44. DOI: [10.1083/jcb.91.1.26](https://doi.org/10.1083/jcb.91.1.26)
- Ward S, Roberts TM, Strome S, Pavalko FM, Hogan E. 1986. Monoclonal antibodies that recognize a polypeptide antigenic determinant shared by multiple *Caenorhabditis elegans* sperm-specific proteins. *The Journal of cell biology* 102: 1778-1786. DOI: [10.1083/jcb.102.5.1778](https://doi.org/10.1083/jcb.102.5.1778)
- Wolf N, Hirsh D, McIntosh JR. 1978. Spermatogenesis in males of the free-living nematode, *Caenorhabditis elegans*. *Journal of Ultrastructure Research* 63: 155-169. DOI: [10.1016/S0022-5320\(78\)80071-9](https://doi.org/10.1016/S0022-5320(78)80071-9)

**Funding:**

Supported by Agence Nationale de la Recherche (France) ANR 12-BSV2- 0018-01 to Vincent Galy.

Supported by Agence Nationale de la Recherche (France) ANR-22-CE13-0042 to Vincent Galy.

Supported by Fondation pour la Recherche Médicale (France) FRMDEQ20160334874 to Vincent Galy.

**Author Contributions:** Justine Cailloce: formal analysis, investigation, writing - original draft. Fanny Husson: project administration, investigation. Vincent Galy: conceptualization, resources, writing - original draft, funding acquisition, formal analysis, writing - review editing. Jorge Merlet: conceptualization, formal analysis, project administration, supervision, writing - original draft, writing - review editing.

**Reviewed By:** Anonymous

**Nomenclature Validated By:** Anonymous

**WormBase Paper ID:** WBPaper00065987

**History:** Received August 27, 2023 **Revision Received** September 14, 2023 **Accepted** September 18, 2023 **Published Online** September 19, 2023 **Indexed** October 3, 2023

**Copyright:** © 2023 by the authors. This is an open-access article distributed under the terms of the Creative Commons Attribution 4.0 International (CC BY 4.0) License, which permits unrestricted use, distribution, and reproduction in any medium, provided the original author and source are credited.

**Citation:** Cailloce, J; Husson, F; Galy, V; Merlet, J (2023). An antibody free approach to probe the presence of poly-ubiquitin chains on *C. elegans* sperm derived organelles after fertilization. *microPublication Biology*. [10.17912/micropub.biology.000972](https://doi.org/10.17912/micropub.biology.000972)