



HAL
open science

Blood-based systems biology biomarkers for next-generation clinical trials in Alzheimer's disease

Harald Hampel, Andrea Vergallo, Mohammad Afshar, Leyla Akman-Anderson, Joaquín Arenas, Norbert Benda, Richard Batrla, Karl Broich, Filippo Caraci, A Claudio Cuello, et al.

► To cite this version:

Harald Hampel, Andrea Vergallo, Mohammad Afshar, Leyla Akman-Anderson, Joaquín Arenas, et al.. Blood-based systems biology biomarkers for next-generation clinical trials in Alzheimer's disease. *Dialogues in Clinical Neuroscience*, 2022, 21, pp.177 - 191. <10.31887/dcms.2019.21.2/hhampel>. <hal-04496053>

HAL Id: hal-04496053

<https://hal.sorbonne-universite.fr/hal-04496053v1>

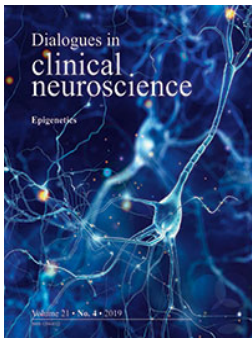
Submitted on 8 Mar 2024

HAL is a multi-disciplinary open access archive for the deposit and dissemination of scientific research documents, whether they are published or not. The documents may come from teaching and research institutions in France or abroad, or from public or private research centers.

L'archive ouverte pluridisciplinaire HAL, est destinée au dépôt et à la diffusion de documents scientifiques de niveau recherche, publiés ou non, émanant des établissements d'enseignement et de recherche français ou étrangers, des laboratoires publics ou privés.



Distributed under a Creative Commons CC BY-NC-ND 4.0 - Attribution - Non-commercial use - No Derivative Works - International License



Blood-based systems biology biomarkers for next-generation clinical trials in Alzheimer's disease

Harald Hampel, Andrea Vergallo, Mohammad Afshar, Leyla Akman-Anderson, Joaquín Arenas, Norbert Benda, Richard Batrla, Karl Broich, Filippo Caraci, A. Claudio Cuello, Enzo Emanuele, Marion Haberkamp, Steven J. Kiddle, Alejandro Lucía, Mark Mapstone, Steven R. Verdooner, Janet Woodcock & Simone Lista

To cite this article: Harald Hampel, Andrea Vergallo, Mohammad Afshar, Leyla Akman-Anderson, Joaquín Arenas, Norbert Benda, Richard Batrla, Karl Broich, Filippo Caraci, A. Claudio Cuello, Enzo Emanuele, Marion Haberkamp, Steven J. Kiddle, Alejandro Lucía, Mark Mapstone, Steven R. Verdooner, Janet Woodcock & Simone Lista (2019) Blood-based systems biology biomarkers for next-generation clinical trials in Alzheimer's disease, *Dialogues in Clinical Neuroscience*, 21:2, 177-191, DOI: [10.31887/DCNS.2019.21.2/hhampel](https://doi.org/10.31887/DCNS.2019.21.2/hhampel)

To link to this article: <https://doi.org/10.31887/DCNS.2019.21.2/hhampel>



© 2019, AICH – Servier Group
© 2019 AICH – Servier Group. All rights reserved



Published online: 01 Apr 2022.



Submit your article to this journal [↗](#)



Article views: 1115



View related articles [↗](#)



View Crossmark data [↗](#)



Citing articles: 3 View citing articles [↗](#)

Blood-based systems biology biomarkers for next-generation clinical trials in Alzheimer's disease

Harald Hampel, MD, PhD; Andrea Vergallo, MD; Mohammad Afshar, MD, PhD; Leyla Akman-Anderson, MD, PhD; Joaquín Arenas, PhD; Norbert Benda, MD; Richard Batrla, MD; Karl Broich, MD; Filippo Caraci, MD, PhD; A. Claudio Cuello, MD; Enzo Emanuele, MD, PhD; Marion Haberkamp, MD; Steven J. Kiddle, PhD; Alejandro Lucía, MD, PhD; Mark Mapstone, PhD; Steven R. Verdooner, MD; Janet Woodcock, MD; Simone Lista, PhD, for the Alzheimer Precision Medicine Initiative (APMI)

Alzheimer's disease (AD)—a complex disease showing multiple pathomechanistic alterations—is triggered by nonlinear dynamic interactions of genetic/epigenetic and environmental risk factors, which, ultimately, converge into a biologically heterogeneous disease. To tackle the burden of AD during early preclinical stages, accessible blood-based biomarkers are currently being developed. Specifically, next-generation clinical trials are expected to integrate positive and negative predictive blood-based biomarkers into study designs to evaluate, at the individual level, target druggability and potential drug resistance mechanisms. In this scenario, systems biology holds promise to accelerate validation and qualification for clinical trial contexts of use—including proof-of-mechanism, patient selection, assessment of treatment efficacy and safety rates, and prognostic evaluation. Albeit in their infancy, systems biology-based approaches are poised to identify relevant AD “signatures” through multifactorial and interindividual variability, allowing us to decipher disease pathophysiology and etiology. Hopefully, innovative biomarker-drug codevelopment strategies will be the road ahead towards effective disease-modifying drugs.

© 2019, AICH – Servier Group

Dialogues Clin Neurosci. 2019;21(2):177-191. doi:10.31887/DCNS.2019.21.2/hhampel

Keywords: Alzheimer's disease; systems biology; precision medicine; blood-based biomarker; context of use; pathophysiology; clinical trial; predictive biomarker; biomarker-drug codevelopment

Alzheimer's disease: systems biology and blood multiomics data

Recent years have witnessed an increasing understanding of the molecular and cellular underpinnings of Alzheimer's disease (AD). Polygenic AD is a chronic neurodegenerative disease with an intrinsic genomic susceptibility and a complex and heterogeneous pathophysiology. This involves complex and intertwined pathophysiological cascades that, ultimately, induce axonal degeneration and deterioration of

synaptic integrity.¹ AD is a multifactorial disease involving genomic/epigenomic, interactome, and environmental factors. Next-generation molecular and high-throughput technologies hold promise to elucidate the mechanisms and networks underlying the complexity of AD. Consequently, comprehensive holistic and systems-level approaches are needed to characterize a complex multifactorial disease such as AD.²

The paradigm of systems biology aims: (i) to understand complex biological systems by integrating large multi-

Original article

Systems biology blood biomarkers in AD trials - Hampel et al

ABBREVIATIONS

A β : amyloid β

A β ₁₋₄₀: 40-amino acid-long amyloid β peptide

A β ₁₋₄₂: 42-amino acid-long amyloid β peptide

AD: Alzheimer disease

APMI: Alzheimer Precision Medicine Initiative

BACE-1: β -site amyloid precursor protein cleaving enzyme 1

COU: context-of-use

CSF: cerebrospinal fluid¹⁸

¹⁸F-FDG-PET: ¹⁸F-fluorodeoxyglucose positron emission tomography

MCI: mild cognitive impairment

NFL: neurofilament light chain protein

p-tau: phospho tau

t-tau: total tau

TRIPOD: Transparent Reporting of a multivariable prediction model for Individual Prognosis Or Diagnosis

mensional quantitative datasets; and (ii) to examine the relationships between components using computational modeling.³ The analysis of large and heterogeneous datasets poses a novel data analytical and modeling challenge, where the number of observations (n) is significantly smaller than the number of attributes (p).⁴ This issue is even more prominent in systems biology using broad omic data. In this context, an unsupervised Formal Concept Analysis method, based on Galois lattices, may be used to extract all logical relations, and limit over-fitting issues.⁵ Systems biology is

currently regarded as an exploration tool for neurodegenerative diseases, including AD, that has the potential to discover new fundamental insights. While the current state of truly integrative systems-level semantic knowledge of preclinical AD is still in its infancy, when combined with valid and reliable biomarker discovery and validation, Systems biology will be a cornerstone for precision medicine.⁶⁻⁸

Notably, since AD shows peripheral manifestations, it may serve as an ideal use-case for systems biology. Multiple systems are affected in AD, including systemic immune response and inflammation,^{9,10} renal and hepatic clearance,^{11,12} lipid and glucose metabolism,¹³⁻¹⁵ and xenobiotics from gut microbiome.^{16,17} Moreover, intercellular communication systems—including the lymphatic system^{18,19} and extracellular vesicles^{20,21}—have been reported. The study of peripheral blood—an easily accessible, information-rich matrix in which these complex systems can be interrogated—is expected to expand our knowledge of the systems biology of AD.^{22,23}

There are a growing number of studies investigating single omics levels (genomic/epigenomic, transcriptomic, proteomic, and metabolomic) of preclinical AD and many of these studies tell a consistent story within individual omic levels. Here, we attempt to concisely summarize the general convergent findings at each level. Since the initial identification of the $\epsilon 4$ allele of the gene encoding apolipoprotein E (*APOE* $\epsilon 4$) as a risk gene variant for AD,²⁴ numerous large-scale genome-wide association studies (GWAS) and meta-analyses of GWAS have been performed.²⁵⁻²⁷ Moreover, recent studies using whole-exome sequencing,

Author affiliations: AXA Research Fund & Sorbonne University Chair, Paris, France; Sorbonne University, GRC n° 21, Alzheimer Precision Medicine (APM), AP-HP, Pitié-Salpêtrière Hospital, Paris, France; Brain & Spine Institute (ICM), INSERM U 1127, CNRS UMR 7225, Paris, France; Institute of Memory and Alzheimer's Disease (IM2A), Department of Neurology, Pitié-Salpêtrière Hospital, AP-HP, Paris, France (Harald Hampel, Andrea Vergallo, Simone Lista); Ariana Pharma, Paris, France (Mohammad Afshar); NeuroVision Imaging, Inc., Sacramento, California, USA (Leyla Akman-Anderson, Steven R. Verdooner); Research Institute of Hospital 12 de Octubre (i+12), Madrid, Spain (Joaquín Arenas, Alejandro Lucía); Biostatistics and Special Pharmacokinetics Unit/Research Division, Federal Institute for Drugs and Medical Devices (BfArM), Bonn, Germany (Norbert Benda); Roche Diagnostics International, Rotkreuz, Switzerland (Richard Batrla); Head and President, Federal Institute for Drugs and Medical Devices (BfArM), Bonn, Germany (Karl Broich); Department of Drug Sciences, University of Catania, Catania, Italy; IRCCS Associazione Oasi Maria S.S., Institute for Research on Mental Retardation and Brain Aging, Troina, Enna, Italy (Filippo Caraci); Department of Pharmacology and Therapeutics, McGill University, Montreal, QC, Canada; Department of Neurology and Neurosurgery, McGill University, Montreal, Canada; Department of Anatomy and Cell Biology, McGill University, Montreal, Canada (A. Claudio Cuello); 2E Science, Robbio, Pavia, Italy (Enzo Emanuele); Neurology/Psychiatry/Ophthalmology Unit, Federal Institute for Drugs and Medical Devices (BfArM), Bonn, Germany (Marion Haberkamp); MRC Biostatistics Unit, Cambridge Institute of Public Health, University of Cambridge, Cambridge, UK (Steven J. Kiddle); Universidad Europea de Madrid (Sports Science Department), Madrid, Spain (Alejandro Lucía); Department of Neurology, University of California Irvine School of Medicine, Irvine, California, USA (Mark Mapstone); Center for Drug Evaluation and Research, US Food and Drug Administration, Silver Spring, Maryland, USA (Janet Woodcock). **Address for correspondence:** Professor Harald Hampel, MD, PhD, Sorbonne University, GRC n° 21, Alzheimer Precision Medicine (APM), AP-HP, Pitié-Salpêtrière Hospital, 47 boulevard de l'hôpital, F-75013, Paris, France. (email: Harald.Hampel@med.uni-muenchen.de)

Original article

Systems biology blood biomarkers in AD trials - Hampel et al

whole-genome sequencing, and targeted sequencing have led to the identification of rare variants in other novel late-onset AD genes.²⁶ Besides the three identified causal gene mutations (amyloid precursor protein [*APP*], presenilin 1 and 2 [*PSEN1* and *PSEN2*]) for autosomal dominant early-onset AD, more than 40 susceptibility genes/loci have been identified for late-onset AD.²⁶ Most of these genes encode for functional pathways that are not obviously related to the primary amyloid β ($A\beta$) and tau proteopathy. Accordingly, they are involved in orthogonal pathways such as immune response and inflammation (eg, ATP-binding cassette transporter A7 [*ABCA7*]), synaptic function (eg, Myc box-dependent-interacting protein 1 [*BINI1*]), and lipid metabolism (eg, phospholipase D3 [*PLD3*]). This list will surely be enlarged in the future as more genes/loci are discovered. For instance, a recent meta-analysis of AD on 9751 samples from Norway and the International Genomics of Alzheimer's Project (IGAP) identified four novel risk loci: heparan sulfate-glucosamine 3-sulfotransferase 1 (*HS3ST1*), immunoglobulin heavy variable 1-68 pseudogene (*IGHV1-68*), USP6 N-terminal like (*USP6NL*)/enoyl-CoA hydratase domain containing 3 (*ECHDC3*), and benzodiazepine receptor associated protein 1 (*BZRAPI-AS*).²⁸

Transcriptomics involves the measurement and study of the complete set of RNA transcripts, produced by the genome, and affecting protein expression and other cellular operations.²⁹ Whole-transcriptome sequencing (RNAseq) technology, using blood leukocytes, is a promising next-generation approach that has advantages for clinical trials. RNAseq is very efficient and has a broad range of detection.³⁰ Transcript expression goes beyond genome expression, reflecting state dependent demands on the organism, including long-noncoding RNAs (lncRNAs) and micro RNAs (miRNAs). Transcriptomic analysis can provide greater biological resolution viewed as coexpression networks³¹ that may be more valid and reliable for measuring perturbations of AD-relevant metabolic pathways.³² To date, transcriptomic studies in AD revealed alterations in lncRNA and miRNA expression reflecting aging and AD-related alterations in synaptic function,³³ neurovascular coupling,³⁴ immune response,³⁵ and energy metabolism and mitochondrial function.³⁶

Blood-based biomarkers may help tackle the burden of Alzheimer disease during early preclinical stages

Proteins are the key functional molecules in biological systems providing structural, functional, and regulatory control of cells, tissues, organs, apparatuses, and systems. Proteins change in response to the demands of the organism in real time and, as a result, the proteome is dynamic. While early attempts at measuring the key proteopathy of AD have been disappointing,³⁷ recent attempts using newer technologies have been more successful.³⁸ Accordingly, numerous studies showed consistent alterations of immune,³⁹ inflammatory,⁴⁰ neurotrophic,⁴¹ and vascular-related proteins that may be promising candidates for proteomic blood biomarkers.

The metabolome consists of low-molecular weight compounds representing the end products of metabolism. With the advent of high-resolution mass spectrometry-based technologies over the past decade, numerous blood metabolomic AD markers have been reported, including those reflecting immune response,⁴² neurotransmitter biosynthesis⁴³ lipid and energy metabolism,⁴⁴ and oxidative stress.⁴⁵

While the major findings highlighted above suggest several compelling lines of biological dysfunction, it is clear that integration across the multiple levels of inquiry will yield much more information about the global processes involved in the preclinical AD state. Consequently, there is scientific rationale for creating multiomics panels which span multiple levels of systems biology to yield more reliable and informative properties. Although relevant approaches are emerging,^{46,47} the ultimate success of using systems-level biomarkers in clinical trials will depend on the construction of robust multiomic panels and their implementation by translational scientists.⁴⁸

Contexts of use for blood-based biomarkers

Blood (plasma/serum) is unquestionably the most appropriate biological matrix for use in large exploratory studies. Given the benefits of blood-based biomarkers in terms of cost- and time-effectiveness, compared with the use of cerebrospinal fluid (CSF) or neuroimaging biomarkers, blood-based biomarkers can serve as the first step in a multistage approach similarly to the processes employed in other diseases (eg, cancer, cardiovascular disease, and

Original article

Systems biology blood biomarkers in AD trials - Hampel et al

infectious disease). This multistep path can facilitate and optimize the early diagnosis of disease.⁴⁹ The first steps necessary for developing blood-based biomarkers for AD diagnosis should aim at establishing the specific contexts of use (COUs), “a statement that describes the manner and purpose of use for the biomarker in drug development” (Table I).⁵⁰

Diagnostic

A diagnostic biomarker would help distinguish AD patients from individuals with normal cognitive aging. Ideally, it would differentiate AD and other dementias as well. Currently, this can be challenging without the use of lumbar puncture,^{51,52} expensive brain imaging,⁵³ or post-mortem histopathology.⁵⁴ It would also have to complement the diagnostic routines that are currently available in primary or in secondary health care. Each of these settings should be considered as two separate COUs due to differences in patients and routines. Diagnostic blood-based biomarkers for AD have been the most researched COU to date.^{50,55} Despite primary health care being by far the largest potential application area, most study populations are not representative of this setting.^{49,50}

Population screening

Screening for AD or for future risk of AD in the general population would have to meet the Wilson and Jungner

general screening criteria,⁵⁶ requiring, for example, that: (i) useful treatments exist; (ii) facilities for diagnosis and treatment exist; (iii) an agreed definition of on who to treat as a patient to avoid “diagnosis creep” exists⁵⁷; (iv) the test is accurate enough so that the cost of false positives does not outweigh the benefits of the test. Presently, none of these criteria are fully addressed.

Stratification into clinical trials

Biomarkers that have been or could be accurately measured in blood are already used to define eligibility for prevention trials. For example, in familial AD, the presence of a disease-causing mutation is an eligibility criteria for many trials.^{58,59} Genetic variants associated with late-onset AD increase the overall disease prevalence, but have poor disease penetrance. Certain gene variants, however, including *APOE ε4*, significantly increase the probability of developing AD; they have been used as eligibility criteria for clinical trials (available at: <http://clinicaltrials.gov/show/NCT02565511> and <http://clinicaltrials.gov/show/NCT03131453>).

The idea is that selecting patients at high risk of cognitive decline in prevention trials can greatly increase power to detect treatment efficacy.⁶⁰ In the future, more complex and accurate blood tests may be used for this purpose. Additionally, target treatments tailored to specific genetic variants or blood profiles should be pursued to develop stratified

SETTING(S)	CONTEXT(S) OF USE
Drug research & development pipelines (biomarker-drug codevelopment programs)	Selection of trial participants
	Assessment of drug mechanism of action (proof of mechanism)
	Dose optimization
	Dose response monitoring
	Efficacy maximization; minimization of toxicity and adverse events
Clinical management	Screening subjects for existing AD pathophysiology (filtering the access to CSF and/or PET)
	Predicting the clinical onset in subjects proven positive for AD pathophysiology to facilitate/optimize enrollment in clinical trials and access to future disease-modifying therapies
	Assessment of diagnosis, disease stage, and prognosis
	Monitoring the disease progression

Table I. Biomarkers: context(s) of use within distinct settings.

Original article

Systems biology blood biomarkers in AD trials - Hampel et al

medicine approaches, either in prevention or dementia-stage trials, according to precision medicine. Current anti-A β trials require evidence of brain or CSF A β pathology as inclusion criteria for AD patients.⁶¹ Emerging blood biomarker candidates showed promise for predicting the presence of A β pathology in the brain concordant with results shown by amyloid positron emission tomography (PET) investigations.³⁸ These tests might be used to identify patients eligible for anti-A β trials, either directly or more likely as a prescreen. This approach is useful to target other aspects of AD pathophysiology, and, if biomarkers (and treatments) are being developed successfully, they could then serve to guide treatment decisions (ie, “biomarker-guided therapy” with “theragnostic” biomarkers).

Disease monitoring

Biological markers of reflecting core aspects of pathophysiology and pathology, including A β peptides, tau protein, and regional brain volumes, are currently employed in clinical trials as secondary outcomes, since serial biomarker alterations can be standardized and precisely and objectively quantified across short time intervals compared with complex measures of cognitive decline.⁶² If blood biomarkers were highly predictive of core pathophysiology and pathology, both cross-sectionally and longitudinally, they could also replace more established CSF and molecular neuroimaging biomarkers.

Treatment response monitoring

Disease monitoring biomarkers, accurately indicating the effect of therapy, should aid mapping of treatment response. In cases where they were required to evaluate safety and efficacy, they could be considered as companion diagnostic. The appealing notion that codevelopment of treatments and companion diagnostics will be required for successful AD trials needs to be further substantiated.

Recommendations

Across all potential COUs, 1039 studies have been performed to develop blood tests for AD and related phenotypes.⁵⁰ Most investigations were academic discovery stage studies, with no blood-based tests conclusively validated and qualified to any meaningful COU for AD. A growing number of promising candidates have been discovered and partly validated in independent studies and are going to be further tested,⁶³ standardized, and qualified. It is not surprising, however, that a number of promising candidate

tests have failed to replicate as well.⁶⁴⁻⁶⁷ For this reason, standardized reporting using the “Transparent Reporting of a Multivariable Prediction Models for Individual Prognosis Or Diagnosis” (TRIPOD)⁶⁸ and preanalytical variable guidelines are recommended.⁶⁹ Similarly, the release of all negative findings, prediction model coefficients, study data, and analysis scripts is advocated to reduce barriers to future research and replication.⁷⁰

Finally, researchers are encouraged to follow the checklist for developing a clinically useful blood-based biomarker.⁵⁰ A key aspect of developing a blood test for AD is to decide on a COU and, then, to develop relevant evidence: this is designated as the “industrial approach.” However, most research in this area has followed the “academic approach,” that is, first developing a biomarker of disease status and then looking for other COUs (*Figure 1*). A problem with the latter approach is that the evidence needed to demonstrate utility in a COU might differ from that typically found in a case-control cohort (eg, the cohort might not be representative of the COU [amyloid prevalence, disease stage]), the cohort might not have all the relevant measures, or the best biomarkers for each COU might differ.^{49,70}

Positive and negative predictive biomarkers detecting target druggability and drug-resistance mechanisms

Current drug therapies for AD are considered transiently (“symptomatic”) biologically effective and could not substantiate clinically meaningful disease-modifying outcomes.⁷¹⁻⁷³ The US Food and Drug Administration (FDA) appealed for a new draft industrial guidance to develop AD drugs, including those for early-stage AD.⁷⁴ Thus, there is an urgent medical need for drugs slowing the progression of the pathophysiological cascade causing synaptic dysfunction and neurodegeneration in AD.^{75,76} The identification of new molecular targets involved in AD pathophysiology represents the essential step to investigate possible disease-modifying drugs counteracting the progression of the disease. Nevertheless, when considering pharmacological validation of new AD drug candidates, the need to develop newer transgenic models with more translational value to the human condition should be considered. Effective drugs in currently available AD animal models do not necessarily translate as disease-modifying drugs in humans.^{77,78} The introduction of transgenic rodent models of

Original article

Systems biology blood biomarkers in AD trials - Hampel et al

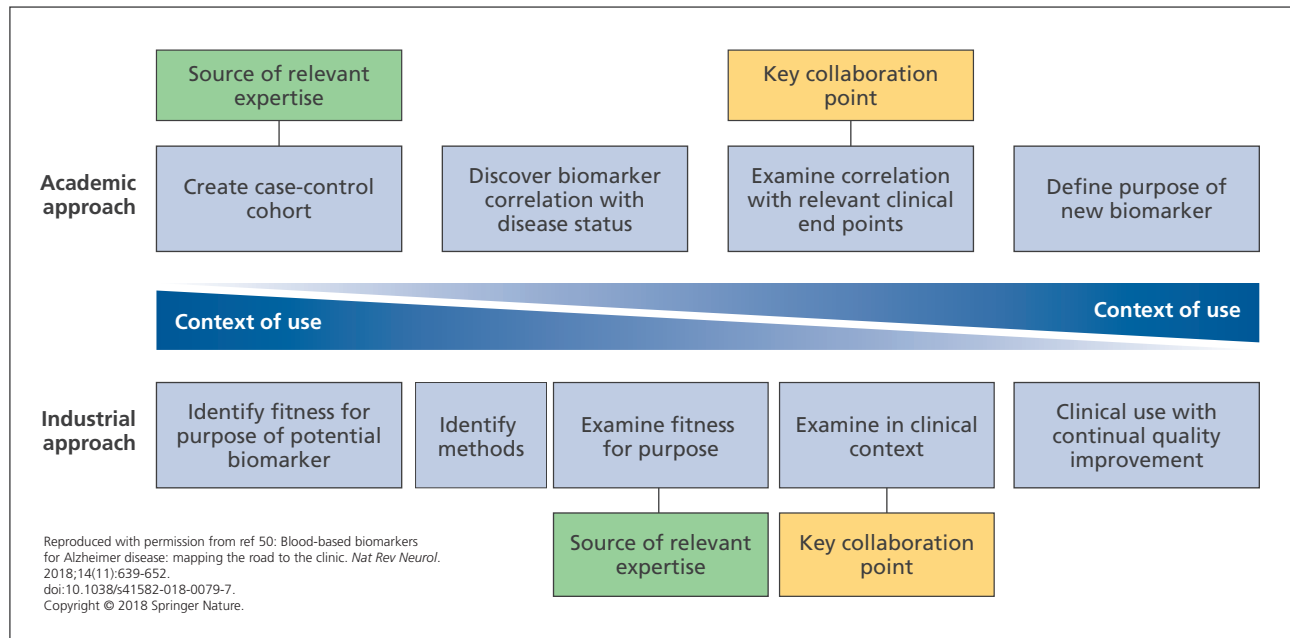


Figure 1. Potential collaboration points between academia and industry. Academic and industrial approaches to biomarker development are inherently different, but combining these approaches could be extremely useful. Close collaboration between industry and academia would allow sharing of expertise in product testing, access to cohorts and clinical data, and sharing of ideas and theories with regard to clinical end points and context. By merging the two approaches, a method whereby the context of use is the primary focus throughout the process can be established. This model enabled synergistic development of a new biomarker between academics and industrial partners, sharing a wealth of experience.

AD-like A β pathology represented a positive development in this direction.^{79,80} The repeated failures of several potential disease-modifying drugs in Phase III clinical trials led to question the right target and the A β hypothesis.⁸¹ However, it should be considered that, frequently, AD patients recruited for clinical trials were already at a too advanced and potentially irreversible (decompensated) clinical stage of the disease (systems failure) and were not precisely selected using validated and qualified biomarkers.⁷⁵ Nevertheless, the case remains that late-stage therapies are likely bound to show only minimal effects or fail.⁸² Therefore, early preclinical disease stage therapeutic trials focusing on A β , tau protein, and other disease-aggravating targets would probably have a better chance of delaying/halting AD-related pathophysiology.

According to this scenario, defining and validating appropriate biomarkers is crucial for obtaining an early diagnosis of AD and assess the efficacy of disease-modifying drug treatments for AD,^{83,84} as stated by the FDA and by the Euro-

pean Medicines Agency (EMA).⁸⁵ The recent revision of the diagnostic criteria developed by the National Institute on Aging and the Alzheimer's Association (NIA-AA) Working Group shifts the definition of the AD "construct" from symptomatic to biological and, specifically, introduces the use of biological markers—in the "A/T/N" classification scheme—as the new criteria reflecting AD pathophysiology.⁸⁶ The framework of the A/T/N scheme includes both a CSF and a neuroimaging biomarker in each of the three biomarker groups to identify the preclinical stage of AD and predict the following cognitive decline.⁸⁶ In particular, "A" refers to biomarkers of A β pathology, ie, the 42-amino acid-long A β peptide (A β_{1-42}) in the CSF or amyloid PET; "T" refers to biomarkers of tau pathology, ie, CSF phospho tau (p-tau) or tau PET; "N" refers to biomarkers of neurodegeneration or neuronal injury, ie, CSF total tau (t-tau), ¹⁸F-fluorodeoxyglucose [FDG]-PET (¹⁸F-FDG-PET), or structural magnetic resonance imaging (MRI). These advanced unbiased biological criteria are required to better design clinical trials aimed at identifying disease-modifying compounds.^{86,87}

Original article

Systems biology blood biomarkers in AD trials - Hampel et al

When referring to both drug development and clinical trials, high costs, insufficient accessibility, and invasiveness of CSF biomarkers need to be critically assessed compared with blood-based biomarkers.⁵ Once validated in independent large-scale cohorts, blood-based biomarkers will likely play a critical role to recognize—as early as in primary care settings—individuals with high risk of an early AD stage and to send these individuals to specialized centers where a confirmatory diagnosis can be done and the “A⁺/T⁺/N⁺” biomarker profile can be established.⁸⁶ The usefulness of blood-based biomarkers further increases when we consider the possibility that disease-modifying compounds, currently in Phase II/III clinical trials (eg, BAN2401 [Eisai], Aducanumab [Biogen] or Gantenerumab [Hoffmann-La Roche], or anti-tau therapies), might be approved in the coming future. In this scenario, blood-based biomarkers will increase the probability to get access to these treatments and will provide a fast and cost-effective rapid test to detect AD and, then, establish the eligibility of patients for inclusion into new clinical trials with new “potential” disease-modifying drugs.

When considering the specific context in drug development, blood-based biomarkers should be validated and qualified for a specific COU, including assessment of mechanism of action (target engagement), dose optimization, efficacy maximization, and monitoring of both drug response and safety.^{50,85} Once a blood-based biomarker is validated for all or some of the above mentioned COUs, it can be implemented in clinical trials, designed to identify disease-modifying agents, and combined with specific neuropsychological tests assessing both episodic memory and other relevant cognitive domains (ie, executive dysfunction).⁷⁶

Different blood-based biomarkers have been studied in the last 5 years, although preliminary evidence of validation is available only for the A β_{1-42} /40-amino acid-long A β peptide (A β_{1-40}) ratio, the β -site amyloid precursor protein cleaving enzyme 1 (BACE-1), t-tau, and p-tau.⁵⁰

Recent studies using ultrasensitive analytical assays (Single Molecule Array [SiMoATM] platform) and fully automated immunoassays showed that plasma A β_{1-42} concentrations and, particularly, the A β_{1-42} /A β_{1-40} ratio predict the risk of progression to mild cognitive impairment (MCI) or dementia in cognitively normal individuals.⁸⁸ Recent studies

showed that preconcentration of plasma A β peptides via immunoprecipitation substantially facilitated their immunological measurements.⁸⁹ Plasma A β_{1-42} concentrations and A β_{1-42} /A β_{1-40} ratio correlate with conventional and validated AD biomarkers essential to detect an A⁺/T⁺/N⁺ biomarker profile,^{38,88,90,91} such as CSF A β_{1-42} concentrations and brain A β deposition (as assessed by PET).^{88,90} The inverse correlation found between plasma A β_{1-42} reduction and brain A β deposition might be useful for future clinical trials using monoclonal antibodies directed against A β (ie, Aducanumab). Indeed, the decrease of plasma A β_{1-42} concentrations can predict A β positivity in subjective cognitive decline, MCI, and AD dementia.⁹⁰ In this regard, decreased plasma A β_{1-42} and increased nerve growth factor precursor (proNGF) concentrations combined with inflammatory biomarkers predict the worsening of “latent” AD pathophysiology and the subsequent cognitive decline in Down syndrome.⁹³ The ability of A β_{1-42} /A β_{1-40} ratio to predict cognitive decline might be useful not only for early diagnosis, but also to monitor disease evolution differently from CSF A β_{1-42} , which is stable over time and not useful for predicting disease progression.^{85,94} This novel evidence, when validated in long-term longitudinal (24 to 36 months) studies involving large cohorts, will be crucial to identify the specific COU of A β_{1-42} /A β_{1-40} ratio as a novel biomarker to assess the mechanism of action of disease-modifying drugs on the target A β (target engagement). We can hypothesize that a disease-modifying drug able to bind A β will prevent both plasma A β_{1-42} reduction and brain A β deposition as well as related subsequent brain atrophy and cognitive decline.

Another approach is to demonstrate target engagement of drugs affecting A β processing such as γ -secretase modulators or BACE-1 inhibitors.⁸⁵ Plasma BACE-1 concentrations are higher in MCI individuals who progressed to AD, over a 3-year follow-up, compared with stable MCI.^{95,96} Plasma BACE-1 activity can predict disease progression; however, this novel COU needs to be validated in independent clinical trials.

When moving to the “tau scenario” of AD, recent highly sensitive immunoassays have been assessed for their potential in using plasma t-tau as a reliable blood-based biomarker for subject/patient selection (screening in primary setting) and AD prognosis.^{50,97-99} It is known that: (i) plasma t-tau concentrations are significantly increased in AD patients compared with controls¹⁰⁰; (ii) blood-

Original article

Systems biology blood biomarkers in AD trials - *Hampel et al*

based p-tau is increased in AD patients and MCI individuals compared with controls¹⁰¹⁻¹⁰³ and plasma p-tau₁₈₁ is a more sensitive and specific predictor of elevated brain A β deposition than t-tau¹⁰⁴; (iii) high baseline concentrations of plasma t-tau in the Alzheimer's Disease Neuroimaging Initiative (ADNI) cohort correlated with increased rates of atrophy (as assessed by MRI), hypometabolism (as assessed by ¹⁸F-FDG-PET), and the consequent cognitive decline⁹⁸; (iv) higher baseline concentrations of plasma t-tau in MCI individuals are associated with greater cognitive decline at 15 months not correlating with brain A β deposition.¹⁰⁵ Whether the increased concentrations of plasma t-tau can be considered a specific biomarker for AD or just a prognostic marker for nonspecific cognitive decline is still debated.⁸⁵ Recently, Chen and colleagues, using a highly sensitive detection platform combined with antibodies directed against the N-terminus of tau protein, found that N-terminal-detected tau (NT1) in plasma was able to discriminate between controls and AD or MCI-AD patients. Plasma NT1 did not predict disease progression, but it could be considered a potential blood-based screening test for AD/AD-MCI useful to improve the selection of individuals eligible for clinical trials and to assess the clinical efficacy of tau-directed immunotherapies.¹⁰⁶

Overall, the above considerations indicate a COU for blood-based biomarkers for better patient selection in clinical trials designed to assess the efficacy of investigative disease-modifying drugs.⁵⁰ This is a prospective scenario given the slow evolution of cognitive decline (12 to 24 months) in early AD, as indicated by psychometric test data. As a consequence, well-validated blood-based biomarkers, integrated into a single panel, will help examine target druggability and resistance mechanisms, thus increasing the predictability of cognitive outcome changes in response to drug treatments. This innovation will enable to reduce costs and resources required by clinical trial pipelines.¹⁰⁷

Regulatory viewpoint of biomarker-drug codevelopment towards individualized therapies for Alzheimer disease

CSF, as well as MRI and PET biomarkers, has been qualified by the EMA for the enrichment of study populations in pivotal clinical trials.¹⁰⁸ However, these diagnostic biomarkers are either considered invasive or expensive and there is a clear need for more practical, less invasive,

and less costly blood-based biomarkers.^{86,109} Recently, plasma neurofilament light chain (NFL) protein emerged as a promising blood-based biomarker for neurodegeneration in neurodegenerative diseases as well as plasma A β measures.^{38,91,110,111} Whereas these examples for candidate blood-based biomarkers are considered promising, none of them can currently detect preclinical AD with reasonable diagnostic accuracy. Up to now, they have been mostly used as exploratory end points in clinical trials. However, their role as prescreening tools for selecting individuals (before more expensive and more invasive biomarkers are used) could be useful and, from a regulatory perspective, more qualification work in this direction is endorsed.^{112,113}

Predictive biomarkers are used to identify treatment-responsive patient subgroups. The usefulness of a biomarker to identify patients eligible to be treated with a new drug depends on the statistical interaction between biomarker and drug, ie, on the difference in the effect size between biomarker-positive and -negative patients. The biomarker is called predictive with respect to a given drug if this difference is positive. Obviously, empirical demonstration that a biomarker is predictive in AD based on usual clinical data would require further corroboration in a well-powered clinical trial. Biomarker-drug codevelopment has been useful in recent years, especially in oncology, but remains a difficult task in AD due to the slow course of the disease and the lack of validated end points or surrogates, especially if early treatment at prodromal stages is contemplated.

Investigating pathway-based targeted drugs simultaneously in different pathologies in innovative study designs, such as recently proposed master protocols, could contribute to more efficient development. However, much effort is still required to explore and confirm reasonable predictive biomarkers based on clinical end points that are believed to predict the treatment effect. More sensitive clinical tools that can detect changes during early and preclinical stages of AD need to be developed.^{114,115}

The difficulties in demonstrating the predictivity of a biomarker create regulatory challenges. If only biomarker-positive patients are studied and there is inadequate external evidence for a differential treatment benefit, (for example, compelling mechanistic data or external control natural history information), the utility of the biomarker is unknown due to the lack of evidence in the nonselected

Original article

Systems biology blood biomarkers in AD trials - Hampel et al

group. In such cases, studying both biomarker-positive and -negative patients will be necessary to obtain regulatory approval for the use of the drug only in a biomarker-identified subgroup.

To foster investigation of targeted therapies using predictive biomarkers, regulators are prepared to discuss and advise on new, more sensitive end points as well as on statistical and pharmacometric modeling.

Industry viewpoint on the development of Alzheimer's disease clinical trials focused on blood-based biomarkers

Neurodegenerative diseases require a better understanding of their pathophysiology to precisely address the relevant altered pathways with compounds targeting the relevant molecules involved.

This requires; (i) the identification of these pathophysiological pathways underlying clinical phenotypes and breaking down one uniformly appearing clinical disease into disease subtypes characterized by biomarkers that are representative of the molecular phenotype. Such an approach has been successfully applied in oncology where biomarkers are used to differentiate subtypes of eg, breast cancer or lung cancer for better response rates.¹¹⁶ Furthermore, this may require (ii) monitoring of the pathophysiological response during treatment to understand whether a patient's disease is initially responding to a treatment and whether it continues and sustains response or (iii) monitoring whether an escape mechanism has been activated and the patient requires a different treatment approach.

In clinical trials for neurodegenerative diseases, this may require early identification of patients with an existing pathology but still absent of very discrete or unspecific symptoms, such as in AD, where biological indicators can precede the clinical symptoms by more than 10 to 15 years.¹¹⁷

In cases where a specific pathophysiological pathway defining a disease subgroup is targeted by a particular compound, a companion diagnostic approach may be required to test the status of biomarker(s) related to the molecular pathway(s) involved in order to provide safe and effective treatment options. Development of such

companion diagnostics often requires exceptional communication and seamless collaboration between two companies (ie, diagnostics and drug companies) with distinct proficiencies and disparate teams which, in practice, may present serious challenges during all stages of codevelopment from design and execution of clinical trials to market access and reimbursement, including Institutional Review Board oversight, study management, monitoring and complex submissions to regulatory agencies. Even though a companion diagnostic approach allows for personalized treatments and may reduce the incidence of adverse effects and overall costs via avoidance of unnecessary and/or inefficient treatments, it should also be recognized that there are several disadvantages associated with a companion diagnostic approach as well. For instance, requirement of a specific diagnostic test to be performed before any treatment may be initiated, or requirement of continuous testing for monitoring purposes could actually add to the cost of individual patient care. In addition, lack of availability or limited accessibility of such a test for every individual potentially eligible for the drug may cause unwanted delays in access to the treatment. Similar to other in vitro diagnostic tests, companion diagnostics must be accurate, reliable, and provide essential insights to be of clinical utility (*Figure 2*).

Implications and conclusions

Early detection and diagnosis of AD and other primary neurodegenerative diseases is a basis of timely and effective treatment. CSF biomarkers (CSF A β ₁₋₄₂ and tau concentrations) and neuroimaging biomarkers (PET imaging of A β and tau aggregates, ¹⁸F-FDG-PET, and structural MRI) are primarily used in academic expert clinical research centers and, therefore, not yet accessible as routine diagnostic tools in global primary care settings. There are international efforts to identify and validate innovative blood (plasma/serum)-based biomarker candidates reflecting primary pathophysiological mechanisms associated with different neurodegenerative diseases, including AD.¹¹⁸

Blood-based biomarker candidates have the potential to be regularly analyzed both in primary care settings and in the community. Repeated (serial) blood sampling is accessible and practical even in elderly individuals and frail patients. There is (i) an ongoing dynamic process to identify and validate blood biomarkers for early detection, diagnosis, and prognosis of AD; and (ii) an increasing confidence that

Original article

Systems biology blood biomarkers in AD trials - Hampel et al

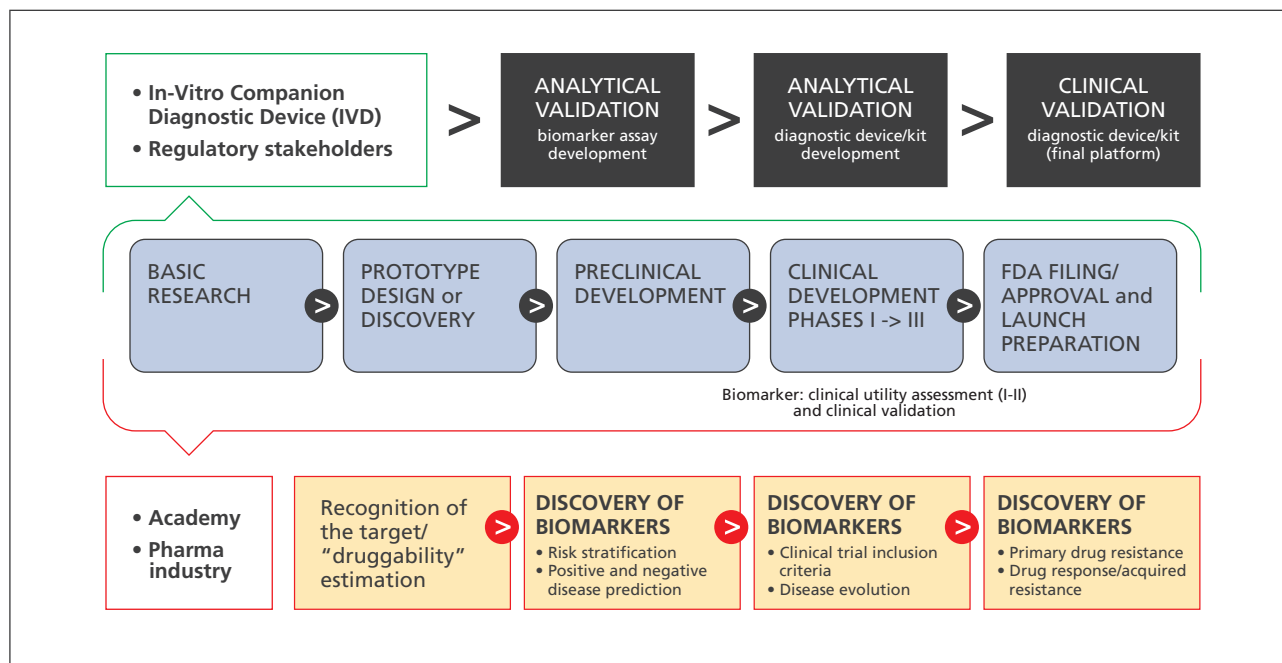


Figure 2. Conceptual framework for biomarker-drug codevelopment strategies. Biomarkers should go through all the phases of drug development and should be validated and qualified with regulatory guidance. Here, a “regulatory” setting for a single test that would be used together with a single drug in the clinical management of a patient is shown. The figure emphasizes key events for both the diagnostic test and drug regulation with coordination of the regulatory processes governing them, with the purpose of launching the products in parallel. Blue arrows, Drug development; orange rectangles, biomarker discovery, validation, and qualification.

blood-based tests for AD detection and diagnosis will be rapidly available, inexpensive, and easy to implement.¹¹⁸ Supporting the international Alzheimer Precision Medicine Initiative (APMI) (available at: <https://www.apmiscienc.com/>) and its cohort program (APMI-CP),¹¹⁹ the Blood-Based Biomarker Interest Group (BBBIG) has been created to provide global standards and best practices for the assessment of blood-based biomarkers. In a multistage diagnostic process, it is envisioned that blood-based biomarker tests would provide the screening entry point preceding further second-stage CSF analysis, MRI, and PET neuroimaging. Further profiling steps, based on genomic/epigenomic exploratory analyses, may be implemented as part of multi-model interventions targeted to specific biologically defined patient subgroups.¹¹⁸

There are many potential COUs for AD biomarkers including, but not limited to, identification of AD risk, risk for progression from MCI to AD, population screening,

stratification into clinical trials, disease monitoring, pharmacodynamics, monitoring of individual safety and tolerability or treatment response monitoring.¹²⁰ With regard to the heterogeneous AD spectrum, blood-based biomarkers are particularly useful to specifically select individuals with Aβ pathology, using the Aβ₁₋₄₂/Aβ₁₋₄₀ ratio.¹²¹ The FDA recently granted Breakthrough Device Designation for a brain amyloidosis blood test to screen for risk of AD.¹²² If approved, it would be the first blood-based screening test to predict brain amyloid PET scan results in adults with memory complaints or dementia.

It is conceivable that other blood-based biomarkers will indicate and identify individuals with more acute and faster disease progression (eg, NFL or tau and, possibly, an inflammatory biomarker, such as YKL-40).¹²³ In this respect, the selection of individuals into a clinical trial will be enhanced using pathophysiological blood-based biomarkers identifying patients at risk for progression and

Original article

Systems biology blood biomarkers in AD trials - *Hampel et al*

decline. This approach will likely be applied to anti-tau therapies currently under development for the early AD, using NFL and tau protein, including different tau species and tau proteins phosphorylated at different phosphoepitopes. We envision the possibility to enter a novel era of next-generation biomarker-guided targeted therapies for different neurodegenerative diseases, including AD. ■

Disclosures/Acknowledgments: Contributors to the Alzheimer Precision Medicine Initiative – Working Group (APMI–WG): Mohammad Afshar (Paris), Lisi Flores Aguilar (Montréal), Leyla Akman-Anderson (Sacramento), Joaquín Arenas (Madrid), Richard Batrla (Rotkreuz), Claudio Babiloni (Rome), Filippo Baldacci (Pisa), Norbert Benda (Bonn), Keith L. Black (Los Angeles), Arun L.W. Bokde (Dublin), Ubaldo Bonuccelli (Pisa), Karl Broich (Bonn), Francesco Cacciola (Siena), Filippo Caraci (Catania), Juan Castrillo† (Derio), Enrica Cavedo (Paris), Roberto Ceravolo (Pisa), Patrizia A. Chiesa (Paris), Jean-Christophe Corvol (Paris), Augusto Claudio Cuello (Montréal), Jeffrey L. Cummings (Las Vegas), Herman Depypere (Gent), Bruno Dubois (Paris), Andrea Duggento (Rome), Enzo Emanuele (Robbio), Valentina Escott-Price (Cardiff), Howard Federoff (Irvine), Maria Teresa Ferretti (Zürich), Massimo Fiandaca (Irvine), Richard A. Frank (Malvern), Francesco Garaci (Rome), Hugo Geerts (Berwyn), Filippo S. Giorgi (Pisa), Edward J. Goetzl (San Francisco), Manuela Graziani (Roma), Marion Haberkamp (Bonn), Marie-Odile Habert (Paris), Harald Hampel (Paris), Karl Herholz (Manchester), Dimitrios Kapogiannis (Baltimore), Eric Karran (Cambridge), Steven J. Kiddle (Cambridge), Seung H. Kim (Seoul), Yosef Koronyo (Los Angeles), Maya Koronyo-Hamaoui (Los Angeles), Todd Langevin (Minneapolis-Saint Paul), Stéphane Lehericy (Paris), Alejandro Lucía (Madrid), Simone Lista (Paris), Jean Lorceau (Paris), Dalila Mango (Rome), Mark Mapstone (Irvine), Christian Neri (Paris), Robert Nisticò (Rome), Sid E. O'bryant (Fort Worth), Giovanni Palermo (Pisa), George Perry (San Antonio), Craig Ritchie (Edinburgh), Simone Rossi (Siena), Amira Saidi (Rome), Emiliano Santarnecchi (Siena), Lon S. Schneider (Los Angeles), Olaf Sporns (Bloomington), Nicola Toschi (Rome), Steven R. Verdooner (Sacramento), Andrea Vergallo (Paris), Nicolas Villain (Paris), Lindsay A. Welikovitch (Montréal), Janet Woodcock (Silver Spring), Erfan Younesi (Esch-sur-Alzette).

This research benefited from the support of the Program “PHOENIX” led by the Sorbonne University Foundation

and sponsored by la *Fondation pour la Recherche sur Alzheimer*.

HH is supported by the AXA Research Fund, the “*Fondation partenariale Sorbonne Université*,” and the “*Fondation pour la Recherche sur Alzheimer*,” Paris, France. The research leading to these results has received funding from the program “*Investissements d’avenir*” ANR-10-IAIHU-06 (Agence Nationale de la Recherche-10-IA Agence Institut Hospitalo-Universitaire-6). SJK is supported by a MRC Career Development Award (MR/P021573/1). HH serves as Senior Associate Editor for the Journal *Alzheimer’s & Dementia*; he received lecture fees from Biogen and Roche, research grants from Pfizer, Avid, and MSD Avenir (paid to the institution), travel funding from Functional Neuromodulation, Axovant, Eli Lilly, and company, Takeda and Zinfandel, GE-Healthcare, and Oryzon Genomics, consultancy fees from Qynapse, Jung Diagnostics, Cytos Ltd., Axovant, Anavex, Takeda, and Zinfandel, GE Healthcare, Oryzon Genomics, and Functional Neuromodulation, and participated in scientific advisory boards of Functional Neuromodulation, Axovant, Eisai, Eli Lilly and company, Cytos Ltd., GE Healthcare, Takeda, and Zinfandel, Oryzon Genomics and Roche Diagnostics. MA is employee and shareholder of Ariana Pharma. RB is an employee of Roche Diagnostics. SJK received an honorarium for serving on an advisory board of Roche Diagnostics. MM has patents pending to Georgetown University. The terms of this arrangement have been reviewed and approved by the University of California, Irvine, in accordance with its conflict of interest policies. SL received lecture honoraria from Roche.

AL, AV, LAA, NB, JA, KB, FC, ACC, EE, MH, SRV, and JW declare that they have no conflict of interest.

HH is coinventor in the following patents as a scientific expert and has received no royalties: In Vitro Multiparameter Determination Method for The Diagnosis and Early Diagnosis of Neurodegenerative Disorders Patent Number: 8916388 • In Vitro Procedure for Diagnosis and Early Diagnosis of Neurodegenerative Diseases Patent Number: 8298784 • Neurodegenerative Markers for Psychiatric Conditions Publication Number: 20120196300 • In Vitro Multiparameter Determination Method for The Diagnosis and Early Diagnosis of Neurodegenerative Disorders Publication Number: 20100062463 • In Vitro Method for The Diagnosis and Early Diagnosis of Neurodegenerative Disorders Publication Number: 20100035286 • In Vitro

Original article

Systems biology blood biomarkers in AD trials - Hampel et al

Procedure for Diagnosis and Early Diagnosis of Neurodegenerative Diseases Publication Number: 20090263822 • In Vitro Method for The Diagnosis of Neurodegenerative Diseases Patent Number: 7547553 • CSF Diagnostic in Vitro Method for Diagnosis of Dementias and Neuroin-

flammatory Diseases Publication Number: 20080206797 • In Vitro Method for The Diagnosis of Neurodegenerative Diseases Publication Number: 20080199966 • Neurodegenerative Markers for Psychiatric Conditions Publication Number: 20080131921

References

- Hampel H, Lista S, Khachaturian ZS. Development of biomarkers to chart all Alzheimer's disease stages: the royal road to cutting the therapeutic Gordian Knot. *Alzheimers Dement*. 2012;8:312-336.
- Lista S, Khachaturian ZS, Rujescu D, Garaci F, Dubois B, Hampel H. Application of systems theory in longitudinal studies on the origin and progression of Alzheimer's disease. *Methods Mol Biol*. 2016;1303:49-67.
- Johnson CH, Ivanisevic J, Siuzdak G. Metabonomics: beyond biomarkers and towards mechanisms. *Nat Rev Mol Cell Biol*. 2016;17(7):451-459.
- Lee CH, Yoon HJ. Medical big data: promise and challenges. *Kidney Res Clin Pract*. 2017;36(1):3-11.
- Jullian N, Jourdan N, Afshar M. Hypothesis generation for scientific discovery. Examples from the use of KEM[®], a rule-based method for multi-objective analysis and optimization. In: Kruse CG, Timmerman H. *Towards Drugs of the Future: Key Issues in Lead Finding and Lead Optimization*. Vol 9. Amsterdam, the Netherlands: IOS Press; 2008:75-80.
- Hampel H, O'Bryant SE, Castrillo JI, et al. Precision medicine - the golden gate for detection, treatment and prevention of Alzheimer's disease. *J Prev Alzheimers Dis*. 2016;3(4):243-259.
- Hampel H, O'Bryant SE, Durrleman S, et al. A precision medicine initiative for Alzheimer's disease: the road ahead to biomarker-guided integrative disease modeling. *Climacteric*. 2017;20(2):107-118.
- Hampel H, Toschi N, Babiloni C, et al. Revolution of Alzheimer precision neurology. Passage-way of systems biology and neurophysiology. *J Alzheimers Dis*. 2018;64(suppl 1):S47-S105.
- Hall JR, Wiechmann AR, Johnson LA, et al. Biomarkers of vascular risk, systemic inflammation, and microvascular pathology and neuropsychiatric symptoms in Alzheimer's disease. *J Alzheimers Dis*. 2013;35(2):363-371.
- Holmes C. Review: systemic inflammation and Alzheimer's disease. *Neuropathol Appl Neurobiol*. 2013;39(1):51-68.
- Gronewold J, Klafki HW, Baldelli E, et al. Factors responsible for plasma beta-amyloid accumulation in chronic kidney disease. *Mol Neurobiol*. 2016;53(5):3136-3145.
- Wang YR, Wang QH, Zhang T, et al. Associations between hepatic functions and plasma amyloid-beta levels-implications for the capacity of liver in peripheral amyloid-beta clearance. *Mol Neurobiol*. 2017;54(3):2338-2344.
- Proitsis P, Kim M, Whitley L, et al. Plasma lipidomics analysis finds long chain cholesteryl esters to be associated with Alzheimer's disease. *Transl Psychiatry*. 2015;5:e494.
- Mapstone M, Cheema AK, Fiandaca MS, et al. Plasma phospholipids identify antecedent memory impairment in older adults. *Nat Med*. 2014;20(4):415-418.
- Arnold SE, Arvanitakis Z, Macauley-Rambach SL, et al. Brain insulin resistance in type 2 diabetes and Alzheimer disease: concepts and conundrums. *Nat Rev Neurol*. 2018;14(3):168-181.
- Zhan X, Stamova B, Jin LW, DeCarli C, Phinney B, Sharp FR. Gram-negative bacterial molecules associate with Alzheimer disease pathology. *Neurology*. 2016;87(22):2324-2332.
- Vogt NM, Kerby RL, Dill-McFarland KA, et al. Gut microbiome alterations in Alzheimer's disease. *Sci Rep*. 2017;7(1):13537.
- Iiliff JJ, Wang M, Liao Y, et al. A paravascular pathway facilitates CSF flow through the brain parenchyma and the clearance of interstitial solutes, including amyloid β . *Sci Transl Med*. 2012;4(147):147ra111.
- Nedergaard M. Neuroscience. Garbage truck of the brain. *Science*. 2013;340(6140):1529-1530.
- Gámez-Valero A, Beyer K, Borrás FE. Extracellular vesicles, new actors in the search for biomarkers of dementias. *Neurobiol Aging*. 2019;74:15-20.
- Rajendran L, Honsho M, Zahn TR, et al. Alzheimer's disease beta-amyloid peptides are released in association with exosomes. *Proc Natl Acad Sci U S A*. 2006;103(30):11172-11177.
- Henriksen K, O'Bryant SE, Hampel H, et al. The future of blood-based biomarkers for Alzheimer's disease. *Alzheimers Dement*. 2014;10(1):115-131.
- Rembach A, Ryan TM, Roberts BR, et al. Progress towards a consensus on biomarkers for Alzheimer's disease: a review of peripheral analytes. *Biomark Med*. 2013;7(4):641-662.
- Corder EH, Saunders AM, Strittmatter WJ, et al. Gene dose of apolipoprotein E type 4 allele and the risk of Alzheimer's disease in late onset families. *Science*. 1993;261(5123):921-923.
- Pimenova AA, Raj T, Goate AM. Untangling genetic risk for Alzheimer's disease. *Biol Psychiatry*. 2018;83(4):300-310.
- Kamboh MI. A brief synopsis on the genetics of Alzheimer's disease. *Curr Genet Med Rep*. 2018;6(4):133-135.
- Freudenberg-Hua Y, Li W, Davies P. The role of genetics in advancing precision medicine for Alzheimer's disease-a narrative review. *Front Med (Lausanne)*. 2018;5:108.
- Witoelar A, Rongve A, Almdahl IS. Meta-analysis of Alzheimer's disease on 9,751 samples from Norway and IGAP study identifies four risk loci. *Sci Rep*. 2018;8(1):18088.
- Lappalainen T, Sammeth M, Friedlander MR, et al. Transcriptome and genome sequencing uncovers functional variation in humans. *Nature*. 2013;501(7468):506-511.
- Sutherland GT, Janitz M, Kril JJ. Understanding the pathogenesis of Alzheimer's disease: will RNA-Seq realize the promise of transcriptomics? *J Neurochem*. 2011;116(6):937-946.
- Gaiteri C, Ding Y, French B, Tseng GC, Sibille E. Beyond modules and hubs: the potential of gene coexpression networks for investigating molecular mechanisms of complex brain disorders. *Genes Brain Behav*. 2014;13(1):13-24.
- Gaiteri C, Mostafavi S, Honey CJ, De Jager PL, Bennett DA. Genetic variants in Alzheimer disease - molecular and brain network approaches. *Nat Rev Neurol*. 2016;12(7):413-427.
- Dillman AA, Majounie E, Ding J, et al. Transcriptomic profiling of the human brain reveals that altered synaptic gene expression is associated with chronological aging. *Sci Rep*. 2017;7(1):16890.
- Magistri M, Velmeshev D, Makhmutova M, Faghghi MA. Transcriptomics profiling of Alzheimer's disease reveal neurovascular defects, altered amyloid-beta homeostasis, and deregulated expression of long noncoding RNAs. *J Alzheimers Dis*. 2015;48(3):647-665.
- Verheijen J, Sleegers K. Understanding Alzheimer disease at the interface between genetics and transcriptomics. *Trends Genet*. 2018;34(6):434-447.
- Stempler S, Yizhak K, Ruppel E. Integrating transcriptomics with metabolic modeling predicts biomarkers and drug targets for Alzheimer's disease. *PLoS One*. 2014;9(8):e105383.
- Toledo JB, Shaw LM, Trojanowski JQ. Plasma amyloid beta measurements - a desired but elusive Alzheimer's disease biomarker. *Alzheimers Res Ther*. 2013;5(2):8.

Original article

Systems biology blood biomarkers in AD trials - Hampel et al

38. Nakamura A, Kaneko N, Villemagne VL, et al. High performance plasma amyloid- β biomarkers for Alzheimer's disease. *Nature*. 2018; 554(7691):249-254.
39. Hye A, Lynham S, Thambisetty M, et al. Proteome-based plasma biomarkers for Alzheimer's disease. *Brain*. 2006;129(Pt 11):3042-3050.
40. Dursun E, Gezen-Ak D, Hanağası H, et al. The interleukin 1 alpha, interleukin 1 beta, interleukin 6 and alpha-2-macroglobulin serum levels in patients with early or late onset Alzheimer's disease, mild cognitive impairment or Parkinson's disease. *J Neuroimmunol*. 2015;283:50-57.
41. O'Bryant SE, Hobson VL, Hall JR, et al. Serum brain-derived neurotrophic factor levels are specifically associated with memory performance among Alzheimer's disease cases. *Dement Geriatr Cogn Disord*. 2011;31(1):31-36.
42. Graham SF, Chevallier OP, Elliott CT, et al. Untargeted metabolomic analysis of human plasma indicates differentially affected polyamine and L-arginine metabolism in mild cognitive impairment subjects converting to Alzheimer's disease. *PLoS One*. 2015;10(3):e0119452.
43. Varma VR, Oommen AM, Varma S, et al. Brain and blood metabolite signatures of pathology and progression in Alzheimer disease: A targeted metabolomics study. *PLoS Med*. 2018;15(1):e1002482.
44. Whitley L, Sen A, Heaton J, et al. Evidence of altered phosphatidylcholine metabolism in Alzheimer's disease. *Neurobiol Aging*. 2014;35(2):271-278.
45. Mapstone M, Lin F, Nalls MA, et al. What success can teach us about failure: the plasma metabolome of older adults with superior memory and lessons for Alzheimer's disease. *Neurobiol Aging*. 2017;51:148-155.
46. Rohart F, Gautier B, Singh A, Le Cao KA. mixOmics: An R package for 'omics feature selection and multiple data integration. *PLoS Comput Biol*. 2017;13(11):e1005752.
47. Singh A, Shannon CP, Gautier B, et al. DIA-BLO: an integrative approach for identifying key molecular drivers from multi-omic assays. *Bioinformatics*. 2019. doi:10.1093/bioinformatics/bty1054.
48. Castrillo JI, Lista S, Hampel H, Ritchie CW. Systems biology methods for Alzheimer's disease research toward molecular signatures, subtypes, and stages and precision medicine: application in cohort studies and trials. *Methods Mol Biol*. 2018; 1750:31-66.
49. O'Bryant SE, Mielke MM, Rissman RA, et al. Blood-based biomarkers in Alzheimer disease: Current state of the science and a novel collaborative paradigm for advancing from discovery to clinic. *Alzheimer's Dement*. 2017;13(1):45-58.
50. Hampel H, O'Bryant SE, Molinuevo JL, et al. Blood-based biomarkers for Alzheimer disease: mapping the road to the clinic. *Nat Rev Neurol*. 2018;14(11):639-652.
51. Hansson O, Seibyl J, Stomrud E, et al. CSF biomarkers of Alzheimer's disease concord with amyloid- β PET and predict clinical progression: A study of fully automated immunoassays in BioFINDER and ADNI cohorts. *Alzheimers Dement*. 2018;14(11):1470-1481.
52. Schindler SE, Gray JD, Gordon BA, et al. Cerebrospinal fluid biomarkers measured by Elecsys assays compared to amyloid imaging. *Alzheimers Dement*. 2018;14(11):1460-1469.
53. Amyloid PET AUDA diagnosis. But could CSF do just as well? Available at: www.alzforum.org/news/conference-coverage/amyloid-pet-aids-diagnosis-could-csf-do-just-well AlzForum. Accessed March 26, 2019.
54. Braak H, Braak E. Neuropathological staging of Alzheimer-related changes. *Acta Neuropathol*. 1991;82(4):239-59.
55. Kiddle SJ, Sattlecker M, Proitsi P, et al. Candidate blood proteome markers of Alzheimer's disease onset and progression: A systematic review and replication study. *J Alzheimers Dis*. 2014;38(3):515-531.
56. Wilson JMG, Jungner G. *Principles and Practice of Screening for Disease*. Geneva: World Health Organization; 1968.
57. Moynihan R. Caution! Diagnosis creep. *Aust Prescr*. 2016;39(2):30-31.
58. Bateman RJ, Benzinger TL, Berry S, et al. The DIAN-TU Next generation Alzheimer's prevention trial: Adaptive design and disease progression model. *Alzheimer's Dement*. 2017;13(1):8-19.
59. Reiman EM, Langbaum JBS, Fleisher AS, et al. Alzheimer's Prevention Initiative: a plan to accelerate the evaluation of presymptomatic treatments. *J Alzheimers Dis*. 2011;26(suppl 3):S321-S329.
60. Hu Y, Li L, Ehm MG, et al. The benefits of using genetic information to design prevention trials. *Am J Hum Genet*. 2013;92(4):547-557.
61. Sperling RA, Rentz DM, Johnson KA, et al. The A4 study: stopping AD before symptoms begin? *Sci Transl Med*. 2014;6(228):228fs13.
62. Cash DM, Rohrer JD, Ryan NS, Ourselin S, Fox NC. Imaging endpoints for clinical trials in Alzheimer's disease. *Alzheimer's Res Ther*. 2014; 6(9):87.
63. Blood tests for amyloid step out at CTAD. Available at: <https://www.alzforum.org/news/conference-coverage/blood-tests-amyloid-step-out-ctad> AlzForum. Accessed March 26, 2019.
64. Ray S, Britschgi M, Herbert C, et al. Classification and prediction of clinical Alzheimer's diagnosis based on plasma signaling proteins. *Nat Med*. 2007;13(11):1359-1362.
65. Marksteiner J, Kemmler G, Weiss EM, et al. Five out of 16 plasma signaling proteins are enhanced in plasma of patients with mild cognitive impairment and Alzheimer's disease. *Neurobiol Aging*. 2011;32(3):539-540.
66. Casanova R, Varma S, Simpson B, et al. Blood metabolite markers of preclinical Alzheimer's disease in two longitudinally followed cohorts of older individuals. *Alzheimer's Dement*. 2016; 12(7):815-822.
67. Li D, Misialek JR, Boerwinkle E, et al. Plasma phospholipids and prevalence of mild cognitive impairment and/or dementia in the ARIC Neurocognitive Study (ARIC-NCS). *Alzheimer's Dement*. 2016;3:73-82.
68. Collins GS, Reitsma JB, Altman DG, Moons KGM; members of the TRIPOD group. Transparent Reporting of a Multivariable Prediction Model for Individual Prognosis or Diagnosis (TRIPOD): The TRIPOD Statement. *Eur Urol*. 2015; 67(6):1142-1151.
69. O'Bryant SE, Gupta V, Henriksen K, et al. Guidelines for the standardization of preanalytic variables for blood-based biomarker studies in Alzheimer's disease research. *Alzheimer's Dement*. 2015;11(5):549-560.
70. Kiddle SJ, Voyle N, Dobson RJB. A blood test for Alzheimer's disease: progress, challenges, and recommendations. *J Alzheimer's Dis*. 2018;64(suppl 1):S289-S297.
71. Goldman DP, Fillit H, Neumann P. Accelerating Alzheimer's disease drug innovations from the research pipeline to patients. *Alzheimers Dement*. 2018;14(6):833-836.
72. Salomone S, Caraci F, Leggio GM, Fedotova J, Drago F. New pharmacological strategies for treatment of Alzheimer's disease: focus on disease modifying drugs. *Br J Clin Pharmacol*. 2012; 73(4):504-517.
73. Winblad B, Amouyel P, Andrieu S, et al. Defeating Alzheimer's disease and other dementias: a priority for European science and society. *Lancet Neurol*. 2016;15(5):455-532.
74. Tsukamoto K. Development of novel pharmaceutical agents for Alzheimer's disease: The impact of regulatory initiatives in Japan and the United States. *Clin Ther*. 2015;37(8):1652-1660.
75. Mullane K, Williams M. Alzheimer's disease (AD) therapeutics - 1: Repeated clinical failures continue to question the amyloid hypothesis of AD and the current understanding of AD causality. *Biochem Pharmacol*. 2018;158:359-375.
76. Caraci F, Castellano S, Salomone S, Drago F, Bosco P, Di Nuovo S. Searching for disease-modifying drugs in AD: can we combine neuropsychological tools with biological markers? *CNS Neurol Disord Drug Targets*. 2014;13(1):173-86.
77. Jankowsky JL, Zheng H. Practical considerations for choosing a mouse model of Alzheimer's disease. *Mol Neurodegener*. 2017;12(1):89.
78. Puzzo D, Gulisano W, Palmeri A, Arancio O. Rodent models for Alzheimer's disease drug discovery. *Expert Opin Drug Discov*. 2015;10(7):703-711.
79. Do Carmo S, Cuello AC. Modeling Alzheimer's disease in transgenic rats. *Mol Neurodegener*. 2013;8:37.
80. Zimmer ER, Parent MJ, Cuello AC, Gauthier S, Rosa-Neto P. MicroPET imaging and transgenic models: a blueprint for Alzheimer's disease

Original article

Systems biology blood biomarkers in AD trials - Hampel et al

clinical research. *Trends Neurosci.* 2014;37(11):629-641.

81. Panza F, Lozupone M, Logroscino G, Imbimbo BP. A critical appraisal of amyloid- β -targeting therapies for Alzheimer disease. *Nat Rev Neurol.* 2019;15(2):73-88.

82. McDade E, Bateman RJ. Stop Alzheimer's before it starts. *Nature.* 2017;547(7662):153-155.

83. Sperling RA, Mormino EC, Schultz AP, et al. The impact of amyloid-beta and tau on prospective cognitive decline in older individuals. *Ann Neurol.* 2019;85(2):181-193.

84. Hampel H, Vergallo A, Aguilar LF, et al. Precision pharmacology for Alzheimer's disease. *Pharmacol Res.* 2018;130:331-365.

85. Molinuevo JL, Ayton S, Batrla R, et al. Current state of Alzheimer's fluid biomarkers. *Acta Neuropathol.* 2018;136(6):821-853.

86. Jack CR Jr, Bennett DA, Blennow K, et al. NIA-AA Research framework: Toward a biological definition of Alzheimer's disease. *Alzheimers Dement.* 2018;14(4):535-562.

87. Dubois B, Hampel H, Feldman HH, et al. Preclinical Alzheimer's disease: Definition, natural history, and diagnostic criteria. *Alzheimers Dement.* 2016;12(3):292-323.

88. Verberk IMW, Slot RE, Verfaillie SCJ, et al. Plasma amyloid as prescreeener for the earliest Alzheimer pathological changes. *Ann Neurol.* 2018;84(5):648-658.

89. Shahpasand-Kroner H, Klafki HW, Bauer C, et al. A two-step immunoassay for the simultaneous assessment of A β 38, A β 40 and A β 42 in human blood plasma supports the A β 42/A β 40 ratio as a promising biomarker candidate of Alzheimer's disease. *Alzheimers Res Ther.* 2018;10(1):121.

90. Janelidze S, Stomrud E, Palmqvist S, et al. Plasma β -amyloid in Alzheimer's disease and vascular disease. *Sci Rep.* 2016;6:26801.

91. Ovod V, Ramsey KN, Mawuenyega KG, et al. Amyloid β concentrations and stable isotope labeling kinetics of human plasma specific to central nervous system amyloidosis. *Alzheimers Dement.* 2017;13:841-849.

92. Palmqvist S, Janelidze S, Stromrud E, et al. Detecting brain amyloid status using fully automated plasma A β biomarker assays. *Abstract presented at: the Alzheimer's Association International Conference (AAIC) 2018.* July 22-26, 2018, Chicago, IL, USA.

93. Iulita MF, Ower A, Barone C, et al. An inflammatory and trophic disconnect biomarker profile revealed in Down syndrome plasma: Relation to cognitive decline and longitudinal evaluation. *Alzheimers Dement.* 2016;12(11):1132-1148.

94. Blennow K, Zetterberg H, Minthon L, et al. Longitudinal stability of CSF biomarkers in Alzheimer's disease. *Neurosci Lett.* 2007;419(1):18-22.

95. Wu G, Sankaranarayanan S, Wong J, et al. Characterization of plasma β -secretase (BACE1) activity and soluble amyloid precursor proteins as

potential biomarkers for Alzheimer's disease. *J Neurosci Res.* 2012;90(12):2247-2258.

96. Shen Y, Wang H, Sun Q, et al. Increased plasma beta-secretase 1 may predict conversion to Alzheimer's disease dementia in individuals with mild cognitive impairment. *Biol Psychiatry.* 2018;83(5):447-455.

97. Zetterberg H, Wilson D, Andreasson U, et al. Plasma tau levels in Alzheimer's disease. *Alzheimers Res Ther.* 2013;5(2):9.

98. Mattsson N, Zetterberg H, Janelidze S, et al. Plasma tau in Alzheimer disease. *Neurology.* 2016;87(17):1827-1835.

99. Deters KD, Risacher SL, Kim S, et al. Plasma tau association with brain atrophy in mild cognitive impairment and Alzheimer's disease. *J Alzheimers Dis.* 2017;58(4):1245-1254.

100. Olsson B, Lautner R, Andreasson U, et al. CSF and blood biomarkers for the diagnosis of Alzheimer's disease: a systematic review and meta-analysis. *Lancet Neurol.* 2016;15:673-684.

101. Shekhar S, Kumar R, Rai N, et al. Estimation of tau and phosphorylated tau181 in serum of Alzheimer's disease and mild cognitive impairment patients. *PLoS One.* 2016;11(7):e0159099.

102. Tabebe H, Kasai T, Ohmichi T, et al. Quantification of plasma phosphorylated tau to use as a biomarker for brain Alzheimer pathology: pilot case-control studies including patients with Alzheimer's disease and down syndrome. *Mol Neurodegener.* 2017;12(1):63.

103. Yang CC, Chiu MJ, Chen TF, Chang HL, Liu BH, Yang SY. Assay of plasma phosphorylated tau protein (threonine 181) and total tau protein in early-stage Alzheimer's disease. *J Alzheimers Dis.* 2018;61(4):1323-1332.

104. Mielke MM, Hagen CE, Xu J, et al. Plasma phospho-tau181 increases with Alzheimer's disease clinical severity and is associated with tau- and amyloid-positron emission tomography. *Alzheimers Dement.* 2018;14(8):989-997.

105. Mielke MM, Hagen CE, Wennberg AMV, et al. Association of plasma total tau level with cognitive decline and risk of mild cognitive impairment or dementia in the Mayo Clinic Study on Aging. *JAMA Neurol.* 2017;74(9):1073-1080.

106. Chen Z, Mengel D, Keshavan A, et al. Learnings about the complexity of extracellular tau aid development of a blood-based screen for Alzheimer's disease. *Alzheimers Dement.* 2018 Nov 9. doi:10.1016/j.jalz.2018.09.010.

107. Hampel H, Goetzl EJ, Kapogiannis D, Lista S, Vergallo A. Biomarker-drug and liquid biopsy co-development for disease staging and targeted therapy: cornerstones for Alzheimer's precision medicine and pharmacology. *Front Pharmacol.* 2019. doi:10.3389/fphar.2019.00310.

108. European Medicines Agency. Guideline on the clinical investigation of medicines for the treatment of Alzheimer's disease. CPMP/EWP/553/95. Rev.2, 22 February 2018. Available at: [\[line/guideline-clinical-investigation-medicines-treatment-alzheimers-disease-revision-2_en.pdf\]\(https://www.ema.europa.eu/documents/scientific-guideline/guideline-clinical-investigation-medicines-treatment-alzheimers-disease-revision-2_en.pdf\). Accessed March 26, 2019.](https://www.ema.europa.eu/documents/scientific-guide-</p></div><div data-bbox=)

109. Nakamura A. Editorial: plasma biomarker for Alzheimer's disease: are we ready now for clinical practice and drug trials? *J Prev Alzheimers Dis.* 2018;5(3):158-159.

110. Mattsson N, Andreasson U, Zetterberg H, Blennow K. Alzheimer's disease neuroimaging initiative. Association of plasma neurofilament light with neurodegeneration in patients with Alzheimer disease. *JAMA Neurol.* 2017;74(5):557-566.

111. Preische O, Schultz SA, Apel A, et al. Serum neurofilament dynamics predicts neurodegeneration and clinical progression in presymptomatic Alzheimer's disease. *Nat Med.* 2019 Jan 21. doi:10.1038/s41591-018-0304-3.

112. European Medicines Agency. Qualification of novel methodologies for drug development: guidance to applicants. EMEA/CHMP/SAWP/72894/2008. 10 November 2014. Available at: https://www.ema.europa.eu/documents/regulatory-procedural-guideline/qualification-novel-methodologies-drug-development-guidance-applicants_en.pdf. Accessed March 26, 2019.

113. Reflection paper on co-development of pharmacogenomics biomarkers and Assays in the context of drug development. Draft. EMA/CHMP/641298/2008. 24 June 2010. Available at: https://www.ema.europa.eu/documents/scientific-guideline/reflection-paper-co-development-pharmacogenomic-biomarkers-assays-context-drug-development_en.pdf. European Medicines Agency. Accessed March 26, 2019.

114. Bouvy JC, Jonsson P, O'Rourke D, et al. Regulatory and health technology assessment considerations for disease-modifying drugs in Alzheimer's disease. *CNS Drugs.* 2018;32(12):1085-1090.

115. Cummings J. The National Institute on Aging-Alzheimer's Association Framework on Alzheimer's disease: Application to clinical trials. *Alzheimers Dement.* 2019;15(1):172-178.

116. Millner LM, Strotman LN. The future of precision medicine in oncology. *Clin Lab Med.* 2016;36(3):557-73.

117. Bateman RJ, Xiong C, Benzinger TL, et al. Clinical and biomarker changes in dominantly inherited Alzheimer's disease. *N Engl J Med.* 2012;367(9):795-804.

118. Hampel H, Vergallo A, Bonuccelli U, Lista S. Editorial: Turning point towards blood biomarker-guided targeted therapy for precision medicine in Alzheimer's disease. *J Prev Alzheimers Dis.* 2018;5(3):160-164.

119. Hampel H, Vergallo A, Perry G, Lista S. The Alzheimer Precision Medicine Initiative. *J Alzheimers Dis.* 2019. doi:10.3233/JAD-181121.

120. Zvěřová M. Alzheimer's disease and blood-based biomarkers - potential contexts of use. *Neuropsychiatr Dis Treat.* 2018;14:1877-1882.

121. Blennow K, Eichenlaub U, Hansson O, et al.

State of the art

Disease-Modifying Therapy in Dementia

Detecting brain amyloid status using fully automated plasma Aβ₄₂ biomarker assays. Abstract presented at: the Alzheimer's Association International Conference (AAIC) 2018. July 22-26, 2018, Chicago, USA.

122. Blood Test granted breakthrough status, to be tested in trial. Available at: <https://www.alzforum.org/news/research-news/blood-test-granted-breakthrough-status-be-tested-trial> AlzForum. Accessed March 26, 2019.

123. Preische O, Schultz SA, Apel A, et al. Serum neurofilament dynamics predicts neurodegeneration and clinical progression in presymptomatic Alzheimer's disease. *Nat Med.* 2019;25(2):277-283.