



**HAL**  
open science

## Searching for causal relationships of glioma: a phenome-wide Mendelian randomisation study

Charlie N Saunders, Alex J Cornish, Ben Kinnersley, Philip J Law, Richard S Houlston, Elizabeth B Claus, Dora Il'yasova, Joellen Schildkraut, Jill S Barnholtz-Sloan, Sara H Olson, et al.

### ► To cite this version:

Charlie N Saunders, Alex J Cornish, Ben Kinnersley, Philip J Law, Richard S Houlston, et al.. Searching for causal relationships of glioma: a phenome-wide Mendelian randomisation study. *British Journal of Cancer*, 2020, 124 (2), pp.447-454. 10.1038/s41416-020-01083-1 . hal-04519628

**HAL Id: hal-04519628**

<https://hal.sorbonne-universite.fr/hal-04519628v1>

Submitted on 25 Mar 2024

**HAL** is a multi-disciplinary open access archive for the deposit and dissemination of scientific research documents, whether they are published or not. The documents may come from teaching and research institutions in France or abroad, or from public or private research centers.

L'archive ouverte pluridisciplinaire **HAL**, est destinée au dépôt et à la diffusion de documents scientifiques de niveau recherche, publiés ou non, émanant des établissements d'enseignement et de recherche français ou étrangers, des laboratoires publics ou privés.



Distributed under a Creative Commons Attribution 4.0 International License



## Searching for causal relationships of glioma a phenome-wide Mendelian randomisation study

Saunders, Charlie N.; Cornish, Alex J.; Kinnersley, Ben; Law, Philip J.; Houlston, Richard S.; Claus, Elizabeth B.; Il'yasova, Dora; Schildkraut, Joellen; Barnholtz-Sloan, Jill S.; Olson, Sara H.; Bernstein, Jonine L.; Lai, Rose K.; Chanock, Stephen; Rajaraman, Preetha; Johansen, Christoffer; Jenkins, Robert B.; Melin, Beatrice S.; Wrensch, Margaret R.; Sanson, Marc; Bondy, Melissa L.; Collaborators

*Published in:*  
British Journal of Cancer

*DOI:*  
[10.1038/s41416-020-01083-1](https://doi.org/10.1038/s41416-020-01083-1)

*Publication date:*  
2021

*Document version*  
Publisher's PDF, also known as Version of record

*Document license:*  
[CC BY](#)

*Citation for published version (APA):*  
Saunders, C. N., Cornish, A. J., Kinnersley, B., Law, P. J., Houlston, R. S., Claus, E. B., Il'yasova, D., Schildkraut, J., Barnholtz-Sloan, J. S., Olson, S. H., Bernstein, J. L., Lai, R. K., Chanock, S., Rajaraman, P., Johansen, C., Jenkins, R. B., Melin, B. S., Wrensch, M. R., Sanson, M., ... Collaborators (2021). Searching for causal relationships of glioma: a phenome-wide Mendelian randomisation study. *British Journal of Cancer*, 124(2), 447-454. <https://doi.org/10.1038/s41416-020-01083-1>



**ARTICLE**

Genetics and Genomics

# Searching for causal relationships of glioma: a phenome-wide Mendelian randomisation study

Charlie N. Saunders<sup>1</sup>, Alex J. Cornish<sup>1</sup>, Ben Kinnersley<sup>1</sup>, Philip J. Law<sup>1</sup>, Richard S. Houlston<sup>1</sup> and Collaborators

**BACKGROUND:** The aetiology of glioma is poorly understood. Summary data from genome-wide association studies (GWAS) can be used in a Mendelian randomisation (MR) phenome-wide association study (PheWAS) to search for glioma risk factors.

**METHODS:** We performed an MR-PheWAS analysing 316 phenotypes, proxied by 8387 genetic variants, and summary genetic data from a GWAS of 12,488 glioma cases and 18,169 controls. Causal effects were estimated under a random-effects inverse-variance-weighted (IVW-RE) model, with robust adjusted profile score (MR-RAPS), weighted median and mode-based estimates computed to assess the robustness of findings. Odds ratios per one standard deviation increase in each phenotype were calculated for all glioma, glioblastoma (GBM) and non-GBM tumours.

**RESULTS:** No significant associations ( $P < 1.58 \times 10^{-4}$ ) were observed between phenotypes and glioma under the IVW-RE model. Suggestive associations ( $1.58 \times 10^{-4} < P < 0.05$ ) were observed between leukocyte telomere length (LTL) with all glioma ( $OR_{SD} = 3.91$ ,  $P = 9.24 \times 10^{-3}$ ) and GBM ( $OR_{SD} = 4.86$ ,  $P = 3.23 \times 10^{-2}$ ), but the association was primarily driven by the *TERT* variant rs2736100. Serum low-density lipoprotein cholesterol and plasma HbA1C showed suggestive associations with glioma ( $OR_{SD} = 1.11$ ,  $P = 1.39 \times 10^{-2}$  and  $OR_{SD} = 1.28$ ,  $P = 1.73 \times 10^{-2}$ , respectively), both associations being reliant on single genetic variants.

**CONCLUSIONS:** Our study provides further insight into the aetiological basis of glioma for which published data have been mixed.

*British Journal of Cancer* (2021) 124:447–454; <https://doi.org/10.1038/s41416-020-01083-1>

**BACKGROUND**

Although gliomas are not common, they account for ~80% of all malignant primary brain tumours.<sup>1</sup> Moreover, these tumours pose a serious health burden because of the associated high case fatality and morbidity, the 5-year survival for glioblastoma (GBM), the most common histological subtype (~45% of cases), being only 5%.<sup>2</sup>

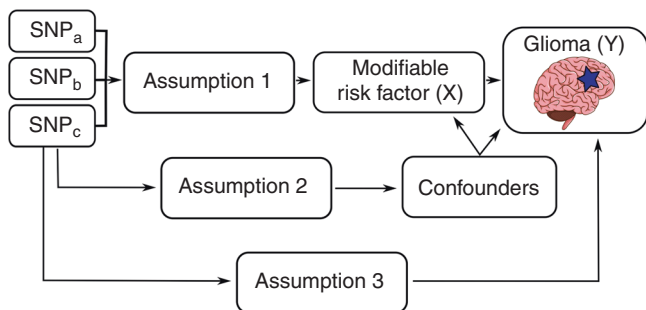
Differences in the incidence of glioma between countries provide support, albeit indirectly, for lifestyle and/or environmental factors as being determinants of disease risk.<sup>3,4</sup> Knowledge of specific aetiological risk factors for glioma has the potential to inform prevention strategies and reduce disease burden. While several factors have been linked to the occurrence of glioma, the only environmental factor consistently associated with risk is exposure to ionising radiation, which accounts for only a small proportion of cases.<sup>4</sup> Epidemiological studies of other potential risk factors have been inconsistent, null or not independently validated.<sup>5–12</sup> These observational studies are, however, prone to reverse causation, unmeasured confounding and recall bias, which can preclude causal inferences.<sup>13</sup> Additionally, the high frequency of exposure ascertainment by proxy is another source of bias.<sup>14</sup> Finally, the studies performed to date have had a limited scope of enquiry either examining factors that have well-established associations for other cancers or hypothesised risk factors based on limited insight into glioma biology, thereby reducing the prospects of revealing causal relationships.

Mendelian randomisation (MR) is an analytical approach that utilises genetic variants as instrumental variables (IVs), to assess the causal relevance of exposures in disease.<sup>15</sup> Because these genetic variants are randomly assigned at conception, they are not influenced by reverse causation. In the absence of pleiotropy (i.e., variants being associated with the disease through alternative pathways), they can provide unconfounded estimates of disease risk (Fig. 1).<sup>15</sup> We have previously applied MR to evaluate potential risk factors that have previously been examined in conventional epidemiological studies of glioma. Initially, we explored causal relationships with dietary factors such as vitamin D, immune response factors and obesity-related factors.<sup>16</sup> After finding no strong associations, we subsequently investigated a more comprehensive list of dietary and lifestyle factors that commonly influence the risk of other cancers, again finding no evidence for strong associations.<sup>17</sup> Other researchers have used MR to examine the relationship between glioma and other traits with more success, purporting a strong association with leukocyte telomere length.<sup>18,19</sup> All of these MR analyses have, however, been predicated on assumptions about disease aetiology. Recently, an agnostic strategy to identify causal relationships has been proposed to examine hitherto unconsidered traits, by integrating the phenome-wide association study (PheWAS) and MR methodology, termed MR-PheWAS.<sup>20</sup>

To advance our understanding of the aetiological basis of glioma, we have conducted an MR-PheWAS to validate reported

<sup>1</sup>Division of Genetics and Epidemiology, The Institute of Cancer Research, London SW7 3RP, UK  
Correspondence: Charlie N. Saunders (Charlie.Saunders@icr.ac.uk)  
Members of the Collaborators are listed above Author contributions.

Received: 3 January 2020 Revised: 27 July 2020 Accepted: 4 September 2020  
Published online: 6 October 2020



**Fig. 1 Principles of Mendelian randomisation (MR) and the assumptions required to obtain an unbiased causal effect estimate.** The three assumptions are (1) genetic variants used as instrumental variables are only associated with the modifiable risk factor (X), (2) genetic variants are not associated with any measured or unmeasured confounders and (3) genetic variants only influence the risk of developing glioma (Y) through the modifiable risk factor (X). SNP single-nucleotide polymorphism.

associations and search for a novel causal relationship that may not have been captured by previous studies. Specifically, we analysed 316 phenotypes, proxied by 8387 genetic variants, and summary genetic data from a genome-wide association study (GWAS) of glioma comprising 12,488 cases and 18,169 control subjects.<sup>21</sup>

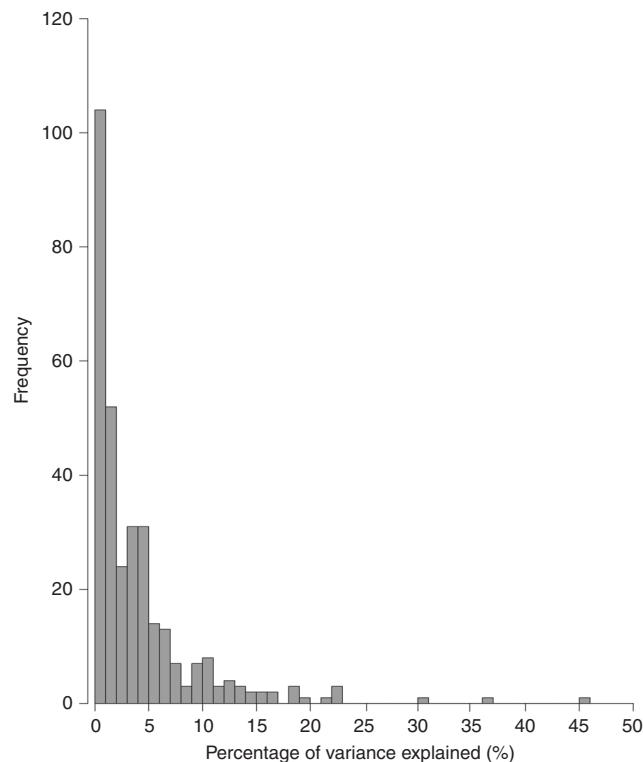
## METHODS

Genetic instruments for phenotypes

Two-sample MR was conducted using the TwoSampleMR R package.<sup>22</sup> Genetic instruments for the traits investigated were single-nucleotide polymorphisms (SNPs) identified from recent meta-analyses, the largest studies published to date or those curated by MR-Base (Supplementary Table A-C1). For each SNP, the chromosome position, the effect estimate expressed in standard deviations (SD) of the trait per allele and the corresponding standard error (SE) were recovered. SNPs were only considered as potential instruments if they were associated with each trait at  $P < 5 \times 10^{-8}$  in a GWAS of European populations, and had a minor allele frequency  $>0.01$ . To avoid co-linearity between SNPs for each trait, correlated SNPs within each trait were excluded (linkage disequilibrium threshold,  $r^2 \geq 0.01$ ). Only SNPs with the strongest effect on the trait were considered for the final analysis (Supplementary Table A-C2). The percentage of variance explained (PVE) by the associated SNPs was computed from the association statistics, and traits were only considered if the PVE was  $>0.1\%$  and the F statistic  $>10$  (Supplementary Table A-C1).<sup>23,24</sup> We only considered continuous traits, as analysis of binary traits (such as disease status) with binary outcomes in two-sample MR frameworks is prone to inaccurate causal estimates, with bias of Wald odds ratios (ORs) of up to 76% being reported.<sup>16,25,26</sup>

## Glioma data

Gliomas are heterogeneous and different tumour subtypes, defined in part by malignancy grade (e.g., pilocytic astrocytoma—World Health Organization (WHO) grade I, diffuse ‘low-grade’ glioma—WHO grade II, anaplastic glioma—WHO grade III and glioblastoma (GBM)—WHO grade IV), which can be distinguished. For the sake of brevity, we considered gliomas as being either GBM or non-GBM. The association of each genetic instrument with glioma risk was examined using a summary of glioma effect estimates and the corresponding SEs from a recent meta-analysis of eight GWAS.<sup>21</sup> This GWAS comprised 12,488 cases (6183 with GBM and 5820 with non-GBM pathology) and 18,169 controls of European descent (Supplementary Table A-C3).



**Fig. 2 Frequency histogram of percentage of variance explained (PVE).** This plot shows the PVE of single-nucleotide polymorphisms (SNP) used as instrumental variables for the 316 phenotypes.

## Mendelian randomisation analysis

The MR methodology is based on the assumption that genetic variants, used as instruments for a risk factor, are associated with the risk factor and not with confounders or alternative causal pathways (Fig. 1).<sup>15</sup> Additionally, to accurately estimate the size of the causal effect, the associations must be linear and unaffected by interactions.<sup>27</sup> For each SNP, causal effect estimates were generated for glioma, GBM and non-GBM tumours as ORs per one SD unit increase in the putative risk factor ( $OR_{SD}$ ), with 95% confidence intervals (CIs), using the Wald ratio. For traits with multiple SNPs as IVs, causal effects were estimated using a random-effects inverse-weighted variance (IVW-RE) model, which assumes that each SNP identifies a different causal effect. These causal effects are averaged to elucidate the true causal effect, due to balanced pleiotropy.<sup>28</sup> To assess the robustness of our findings, we compared the causal estimates and associated  $P$  values using robust adjusted profile score (MR-RAPS), weighted median (WME) and weighted mode-based (WMBE) methods. For exposures with fewer than ten SNPs, the fixed-effects IVW (IVW-FE) method was utilised (Supplementary Table A-C4).<sup>15,29,30</sup> We examined the potential impact of outlying and pleiotropic SNPs on causal estimates using a leave-one-out strategy, using either an IVW-RE or IVW-FE model for exposures with greater than or less than 10 SNPs, respectively (Supplementary Table A-C5). Finally, directional pleiotropy was assessed using MR-Egger regression (Supplementary Table A-C6).<sup>31</sup> Heterogeneity within each trait ( $I^2$ ) was calculated from Cochran’s  $Q$  value.<sup>32,33</sup> Rucker’s  $Q$  value was calculated using RadialMR (Supplementary Table A-C7).<sup>34</sup>

To account for multiple testing, we considered a Bonferroni-corrected  $P$  value of  $1.58 \times 10^{-4}$  (i.e.,  $0.05/316$  putative risk factors) as being statistically significant. A  $P > 1.58 \times 10^{-4}$  but  $<0.05$  was considered to be suggestive evidence of a causal association. Statistical analyses were performed using R version 3.4.0 and MR-Base.<sup>22,35</sup> Figures were generated using Inkscape version 0.92.<sup>36</sup>

Estimation of study power

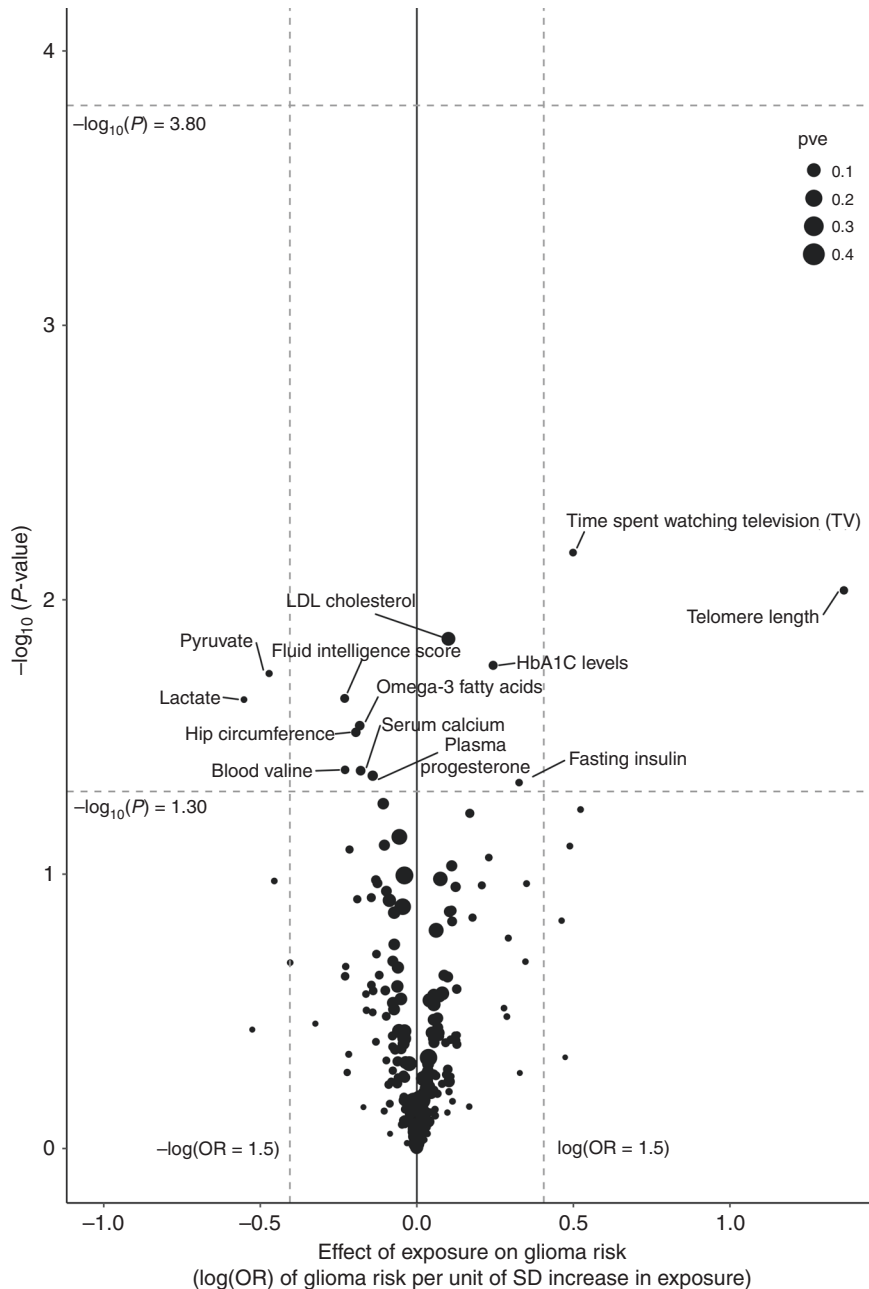
The power of MR to demonstrate a causal effect depends on the percentage of risk factor variance explained by the genetic variants used as instruments. We estimated the study power, stipulating an  $\alpha$  value of 0.05 and  $1.58 \times 10^{-4}$ , for each risk factor a priori across a range of effect sizes as per Brion et al. (Supplementary Table A-C1).<sup>37</sup>

RESULTS

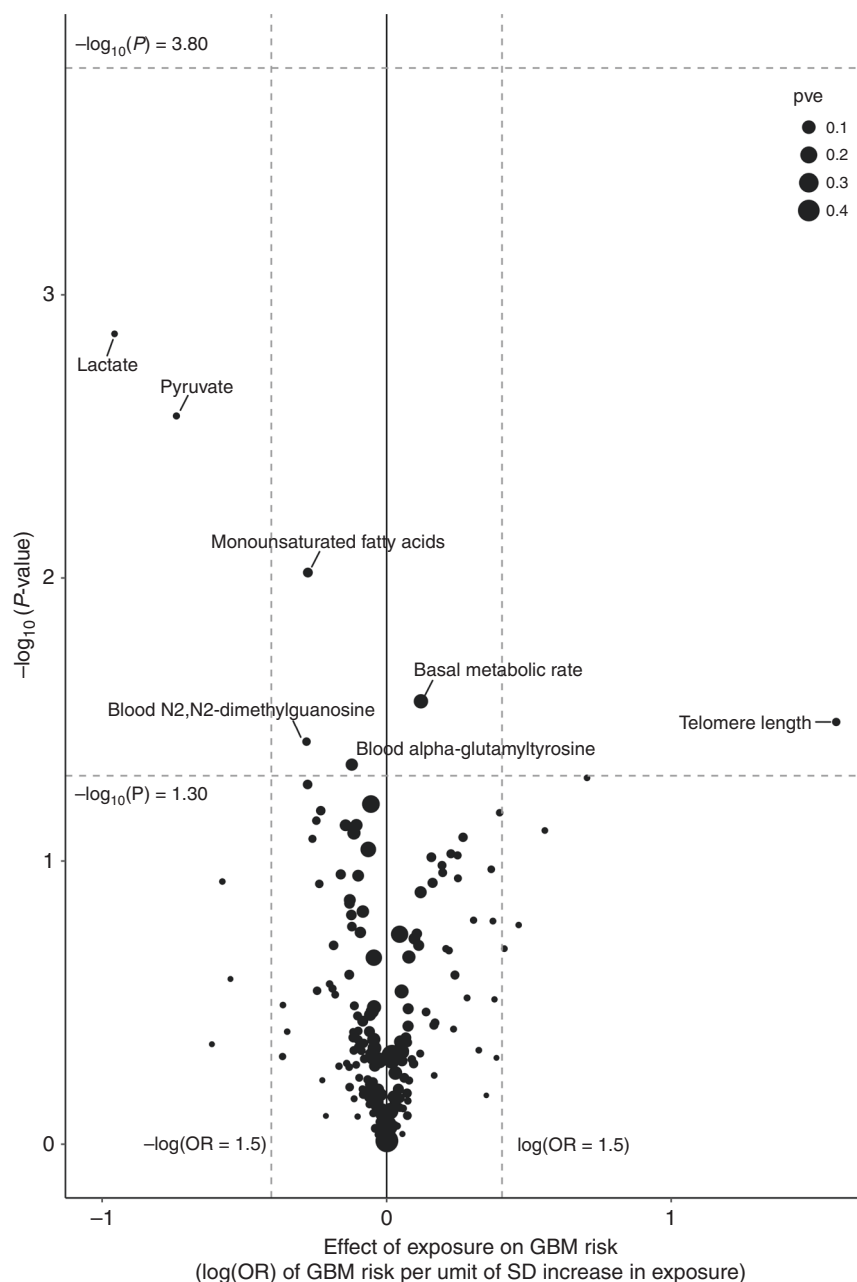
Figure 2 shows the frequency distribution plot of the PVEs across all 316 phenotypes studied. The median PVE by SNPs used as IVs for each of the 316 phenotypes evaluated as risk factors for glioma was 2.2% (0.1–45.8%). The power of our MR study to identify

causal relationships between each of the genetically defined phenotypes and glioma is detailed in Supplementary Table A1. Overall, our study had at least 80% power to detect a 1.5-fold difference in risk for 79% (251/316) of traits for all glioma. Inevitably, our power to demonstrate causal relationships for glioma subtypes was more limited. For GBM and non-GBM, we had at least 80% power to detect a 1.5-fold difference in risk for 72% (226/316) and 71% (223/316) of traits, respectively (Supplementary Table B1 and C1). The power of our study to demonstrate a causal association for glioma, GBM and non-GBM over a range of PVEs is shown in Supplementary Fig. 1.<sup>37</sup>

The strength of the association between each of the 316 phenotypes studied and risk of all glioma, GBM and non-GBM tumours under IVW-RE models is shown in Figs. 3, 4 and 5,



**Fig. 3** Volcano plot of the odds ratio per standard deviation from random-effects inverse-variance-weighted (IVW) Mendelian randomisation analysis of 316 phenotypes with risk of all glioma. Top dashed grey line corresponds to a Bonferroni-corrected  $P$  value of  $-\log_{10} P$  value of 3.80 ( $1.58 \times 10^{-4}$ ), indicating significant association. Bottom dashed grey line corresponds to  $-\log_{10} P$  value of 1.30 (0.05), indicating a suggestive association. Vertical dashed grey lines correspond to  $\log(OR = 1.5)$  and  $-\log(OR = 1.5)$ .



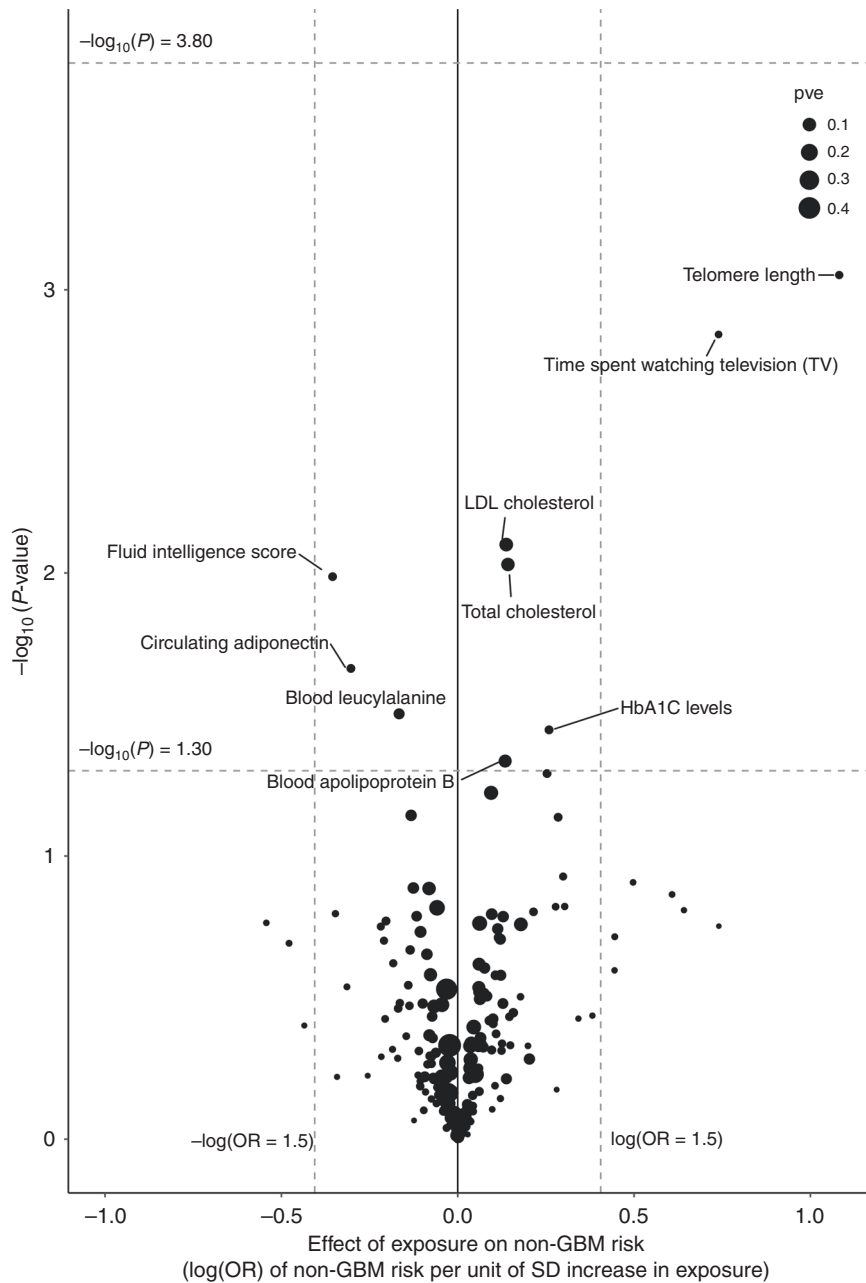
**Fig. 4** Volcano plot of the odds ratio per standard deviation from random-effects inverse-variance-weighted (IVW) Mendelian randomisation analysis of the 316 phenotypes with GBM risk. Top dashed grey line corresponds to a Bonferroni-corrected  $P$  value of  $-\log_{10} P$  value of 3.80 ( $P = 1.58 \times 10^{-4}$ ), indicating significant association. Bottom dashed grey line corresponds to  $-\log_{10} P$  value of 1.30 ( $P = 0.05$ ), indicating a suggestive association. Vertical dashed grey lines correspond to  $\log(\text{OR} = 1.5)$  and  $-\log(\text{OR} = 1.5)$ .

respectively, with the corresponding tabulated data in Supplementary Table A-C4. None of the traits showed a statistically significant association with risk of all glioma, GBM or non-GBM under an IVW-RE model. Thirteen traits showed suggestive evidence of association ( $P < 0.05$ ) with risk of all glioma, but only leukocyte telomere length (LTL), serum low-density lipoprotein (LDL) cholesterol and plasma HbA1C levels showed consistent evidence of an association under the WME, WMBE and MR-RAP models (Supplementary Table A4).

Genetically increased LTL was associated with glioma risk;  $\text{OR}_s$  under IVW-RE and IVE-FE models' respective  $\text{OR}_s$  per SD were 3.91 (95% CI: 1.40–10.93,  $P = 9.24 \times 10^{-3}$ ) and 3.91 (95% CI: 3.10–4.94,  $P = 1.29 \times 10^{-30}$ ). The profound difference in strength of the

relationship reflected the marked heterogeneity between the seven SNPs used as IVs ( $P_{\text{het}} = 6.49 \times 10^{-23}$ ,  $I^2 = 95\%$ ). The association was primarily driven by the *TERT* SNP (rs2736100), but also to a lesser extent of *TERC* (rs10936599) and *OBFC1* (rs9420907) SNPs (Fig. 6 and Supplementary Fig. 2). Excluding rs2736100 reduced heterogeneity ( $P_{\text{het}} = 5.61 \times 10^{-4}$ ,  $I^2 = 77\%$ ), but reduced the overall strength of the association (IVW-FE  $\text{OR}_{\text{SD}} = 2.01$ , 95% CI: 1.54–2.63,  $P = 3.29 \times 10^{-7}$ ) (Supplementary Table A5).

Genetically predicted higher levels of LDL cholesterol were associated with an increased risk of glioma (IVW-RE:  $\text{OR}_{\text{SD}} = 1.11$ , 95% CI: 1.02–1.20,  $P = 1.39 \times 10^{-2}$ ), but the association was largely reliant on rs7254892, with exclusion of rs7254892 association, under



**Fig. 5** Volcano plot of the odds ratio per standard deviation from random-effects inverse-variance-weighted (IVW) Mendelian randomisation analysis of the 316 phenotypes with non-GBM risk. Top dashed grey line corresponds to a Bonferroni-corrected  $P$  value of  $-\log_{10} P$  value of 3.80 ( $P = 1.58 \times 10^{-4}$ ), indicating significant association. Bottom dashed grey line corresponds to  $-\log_{10} P$  value of 1.30 ( $P = 0.05$ ) indicating a suggestive association. Vertical dashed grey lines correspond to  $\log(\text{OR} = 1.5)$  and  $-\log(\text{OR} = 1.5)$ .

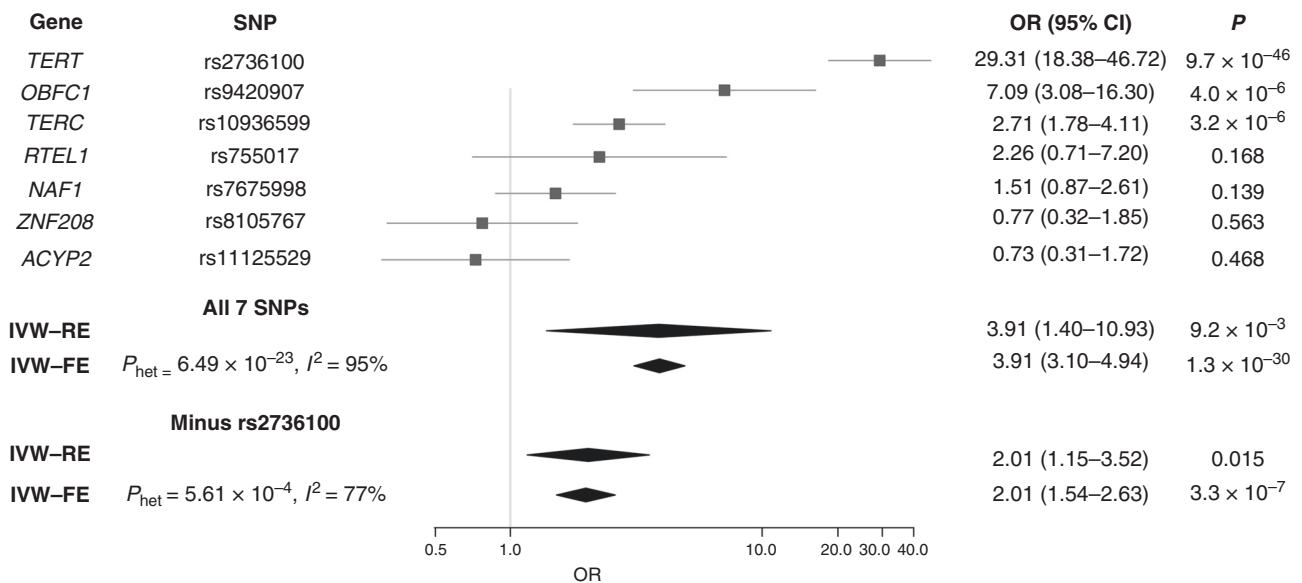
an IVW-RE model, reduced to  $\text{OR}_{\text{SD}} = 1.09$  (95% CI: 1.00–1.18,  $P = 5.64 \times 10^{-2}$ ). The association between genetically predicted higher HbA1C levels and glioma risk (IVW-RE:  $\text{OR}_{\text{SD}} = 1.28$ , 95% CI: 1.04–1.56,  $P = 1.73 \times 10^{-2}$ ) was also largely dependent on a single SNP. The exclusion of rs16926246 reduced the association, under an IVW-RE model, to  $\text{OR}_{\text{SD}} 1.16$  (95% CI: 0.93–1.46,  $P = 1.91 \times 10^{-1}$ ).

Seven traits showed evidence of suggestive association ( $P < 0.05$ ) with GBM risk under IVW-RE models (Supplementary Table B4). However, only the association between genetically determined increased LTL and GBM risk (IVW-RE:  $\text{OR}_{\text{SD}} = 4.86$  (95% CI: 1.14–20.63,  $P = 3.23 \times 10^{-2}$ ) and IVW-FE:  $\text{OR}_{\text{SD}} = 4.86$  (95% CI: 3.65–6.46,  $P = 1.80 \times 10^{-27}$ )) was consistent under WME, WMBE and MR-RAP models (Supplementary Table B4). As with all glioma,

there was marked heterogeneity between SNP associations ( $P_{\text{het}} = 9.19 \times 10^{-31}$ ,  $I^2 = 96\%$ ) with the association being driven by the *TERT* (rs2736100) SNP (Supplementary Table B5, Supplementary Figs. 3 and 5).

Nine traits showed evidence of a suggestive association ( $P < 0.05$ ) with non-GBM risk under IVW-RE models; however, only genetically predicted serum LDL cholesterol and total cholesterol (TC) levels showed consistent evidence under WME, WMBE and MR-RAP models (Supplementary Table C4). Increased LDL cholesterol (IVW-RE:  $\text{OR}_{\text{SD}} = 1.15$ , 95% CI: 1.04–1.27,  $P = 7.94 \times 10^{-3}$ ) and TC (IVW-RE:  $\text{OR}_{\text{SD}} = 1.15$  (95% CI: 1.04–1.28,  $P = 9.33 \times 10^{-3}$ )) remained suggestively associated with increased non-GBM risk after leave-one-out analysis (Supplementary Table C5).





**Fig. 6 Forest plot showing the effect of alleles associated with longer leukocyte telomere length on all glioma risk.** Diamonds represents overall causal effects estimated using both random and fixed-effects inverse-variance-weighted (IVW) models, both with and without the *TERT* SNP (rs2736100). Confidence intervals indicated by diamond width. Vertical line denotes the null value ( $OR_{SD} = 1$ ).

## DISCUSSION

Despite its comparative rarity, glioma is one of the cancers of unmet need, given the significant morbidity and mortality associated with its diagnosis. Despite much research over the past three decades, we still know very little about the aetiological basis of glioma, which is a barrier to developing strategies to reduce disease burden. This contrasts markedly to the success of cohort and case-control studies of the common cancers, such as breast, lung and colorectal, which have identified major determinants of risk.<sup>38,39</sup> Aside from the incidence of glioma limiting the power of any cohort study to demonstrate a causal association, case-control studies of glioma are more apt to suffer from bias than studies of other tumour types.<sup>14</sup> It is entirely plausible that because of such biases, previous observational epidemiological studies have reported mixed results for the possible relationship between glioma and fat, cholesterol,<sup>6</sup> BMI, physical activity,<sup>7,40,41</sup> blood pressure<sup>8</sup> and diabetes.<sup>42</sup>

MR can circumvent many limitations of a conventional observational study, and the methodology is therefore increasingly being used to examine the impact of interventions on disease risk. The value of MR has been greatly enhanced by the wealth of GWAS data now available on multiple traits, which provide SNPs that can be used as IVs. These data have allowed us to test the relationship between multiple traits and glioma risk in a hypothesis-free manner by performing a MR-PheWAS.

Genetically determined blood LTL has previously been associated with GBM risk, based on a 5% subset of the GWAS data we analysed.<sup>19</sup> The association is principally driven by the *TERT*, *TERC* and *OBFC1* SNPs, whereas the *RTEL1*, *NAF1*, *ACYP2* and *ZNF208* SNPs show only limited support for an association (Supplementary Table A-C2, Supplementary Figs. 2–4). Since whole-blood TL is not strongly correlated with brain TL (pairwise correlation: 0.10–0.22), discordancy in IV SNPs could reflect tissue specificity.<sup>43</sup> Our MR-PheWAS did not provide robust evidence for associations between glioma and any of the 316 phenotypes examined, which comprised traits relating to human behaviour, cognitive performance, physical body variations, metabolic factors and the immune system. We did however find support for raised LDL cholesterol, TC and HbA1C being associated with risk, relationships not observed in

previous MR analyses of glioma.<sup>16,18</sup> Our current analysis has, however, been able to leverage a greater number of SNPs as IVs, thereby increasing study power and enabling us to demonstrate the effects of smaller magnitudes that may have been missed by earlier work.

The strength of our MR study is the exploitation of large GWAS datasets to examine the relationship between multiple phenotypes and risk of glioma. Our analysis does, however, have limitations. Firstly, we were limited to studying phenotypes with genetic instruments available. Secondly, correcting for multiple testing inevitably means the potential for false negatives is not unsubstantial. Thirdly, even though we only considered traits for which the genetic instruments employed explained at least 0.1% of phenotypic variance, for a large number of traits, we still had limited power to demonstrate causal associations of a small effect.

While MR-PheWAS offers the ability to simultaneously evaluate a wide range of potential risk factors and avoid many of the biases and limitations of conventional epidemiological studies, it incurs the burden of multiple testing impacting on study power. Ongoing GWAS of glioma and subsequent meta-analyses are likely to greatly empower future MR-PheWAS. Furthermore, these large datasets offer the opportunity to pursue MR-PheWAS using 'adaptive design' methodologies, which are increasingly used in clinical trials. A subset of outcome GWAS data would be analysed in stage 1, and only those exposures with a  $P$  value  $<0.05$  would be evaluated using the remaining dataset, thereby potentially reducing the burden of dealing with multiple testing.<sup>44,45</sup>

In conclusion, our study provides further insight into the landscape of glioma aetiology and sheds light on factors for which the evidence from conventional epidemiological studies has been mixed. Specifically, we provide evidence against any of the 316 traits being major risk factors for the development of glioma, helping to deprioritise these factors in future studies. The advent of larger GWAS datasets of exposures and glioma offers the prospect of using MR-based strategies to search for possible causal associations with smaller effect sizes, potentially elucidating stronger associations with risk factors that currently only show a suggestive level of association.



## COLLABORATORS

Elizabeth B. Claus<sup>2,3</sup>, Dora Il'yasova<sup>4,5,6</sup>, Joellen Schildkraut<sup>5,6</sup>, Jill S. Barnholtz-Sloan<sup>7</sup>, Sara H. Olson<sup>8</sup>, Jonine L. Bernstein<sup>8</sup>, Rose K. Lai<sup>9</sup>, Stephen Chanock<sup>10</sup>, Preetha Rajaraman<sup>10</sup>, Christoffer Johansen<sup>11,12</sup>, Robert B. Jenkins<sup>13</sup>, Beatrice S. Melin<sup>14</sup>, Margaret R. Wrensch<sup>15,16</sup>, Marc Sanson<sup>17,18</sup> and Melissa L. Bondy<sup>19</sup>

<sup>2</sup>School of Public Health, Yale University, New Haven, CT 06510, USA; <sup>3</sup>Department of Neurosurgery, Brigham and Women's Hospital, Boston, MA 02115, USA; <sup>4</sup>Department of Epidemiology and Biostatistics, School of Public Health, Georgia State University, Atlanta, GA 30303, USA; <sup>5</sup>Duke Cancer Institute, Duke University Medical Center, Durham, NC 27710, USA; <sup>6</sup>Cancer Control and Prevention Program, Department of Community and Family Medicine, Duke University Medical Center, Durham, NC 27710, USA; <sup>7</sup>Department of Population and Quantitative Health Sciences and the Cleveland Center for Health Outcomes Research, Case Western Reserve University School of Medicine, Cleveland, OH 44106, USA; <sup>8</sup>Department of Epidemiology and Biostatistics, Memorial Sloan Kettering Cancer Center, New York, NY 10017, USA; <sup>9</sup>Departments of Neurology and Preventive Medicine, Keck School of Medicine, University of Southern California, Los Angeles, CA 90033, USA; <sup>10</sup>Division of Cancer Epidemiology and Genetics, National Cancer Institute, Bethesda, MD 20892, USA; <sup>11</sup>Danish Cancer Society Research Center, Survivorship, Danish Cancer Society, Copenhagen 2100, Denmark; <sup>12</sup>Oncology Clinic, Finsen Centre, Rigshospitalet, University of Copenhagen, Copenhagen 2100, Denmark; <sup>13</sup>Department of Laboratory Medicine and Pathology, Mayo Clinic Comprehensive Cancer Center, Mayo Clinic, Rochester, MI 55905, USA; <sup>14</sup>Department of Radiation Sciences, Umeå University, Umeå 901 87, Sweden; <sup>15</sup>Department of Neurological Surgery, School of Medicine, University of California, San Francisco, CA 94143, USA; <sup>16</sup>Institute of Human Genetics, University of California, San Francisco, CA 94143, USA; <sup>17</sup>Sorbonne Université, Inserm, CNRS, UMR S 1127, Institut du Cerveau et de la Moelle épinière, ICM, F-75013 Paris, France; <sup>18</sup>AP-HP, Groupe Hospitalier Pitié-Salpêtrière, Service de Neurologie 2-Mazarin, Paris 75013, France and <sup>19</sup>Section of Epidemiology and Population Sciences, Department of Medicine, Dan L. Duncan Comprehensive Cancer Center, Baylor College of Medicine, Houston, TX 77030, USA

## AUTHOR CONTRIBUTIONS

C.N.S. and A.J.C. performed statistical analyses. C.N.S., A.J.C., B.K. and R.S.H. drafted the paper. All authors reviewed, read and approved the final paper.

## ADDITIONAL INFORMATION

**Ethics approval and consent to participate** This study makes use of summary-level data; therefore, no ethical approval or consent to participate was required.

**Consent to publish** Not applicable.

**Data availability** Genetic instruments can be obtained through MR-Base (<http://www.mrbase.org/>)<sup>22</sup> or from the individual reference papers. Meta-analysed glioma GWAS data were obtained from the study by Melin et al.,<sup>21</sup> which is a meta-analysis of eight independent GWAS studies (UK,<sup>46</sup> French,<sup>47</sup> German,<sup>48</sup> MDA,<sup>49</sup> UCSF-SFAGS,<sup>49</sup> GliomaScan,<sup>50</sup> GICC<sup>51</sup> and UCSF/Mayo<sup>52</sup>) detailed in Supplementary Table A-C4. Genotype data from the Glioma International Case-Control Consortium Study GWAS are available from the database of Genotypes and Phenotypes (dbGaP) under accession phs001319.v1.p1. Genotypes from the GliomaScan GWAS can be accessed through dbGaP accession phs000652.v1.p1.

**Competing interests** R.S.H. is a subject editor and a member of the Editorial Board of the *BJC*. The remaining authors declare no competing interests.

**Funding information** C.N.S. was supported by Cancer Research UK (C1298/A8362).

**Supplementary information** is available for this paper at <https://doi.org/10.1038/s41416-020-01083-1>.

**Publisher's note** Springer Nature remains neutral with regard to jurisdictional claims in published maps and institutional affiliations.

## REFERENCES

1. Crocetti, E., Trama, A., Stiller, C., Caldarella, A., Soffiotti, R., Jaal, J., et al. Epidemiology of glial and non-glial brain tumours in Europe. *Eur. J. Cancer*. **48**, 1532–42 (2012).

- Ostrom, Q. T., Gittleman, H., Liao, P., Rouse, C., Chen, Y., Dooling, J. et al. CBRUS statistical report: primary brain and central nervous system tumors diagnosed in the United States in 2007–2011. *Neuro. Oncol.* **16**, iv1–iv63 (2014).
- Leece, R., Xu, J., Ostrom, Q. T., Chen, Y., Kruchko, C. & Barnholtz-Sloan, J. S. Global incidence of malignant brain and other central nervous system tumors by histology, 2003–2007. *Neuro. Oncol.* **19**, 1553–1564 (2017).
- Bondy, M. L., Scheurer, M. E., Malmer, B., Barnholtz-Sloan, J. S., Davis, F. G., Il'yasova, D. et al. Brain tumor epidemiology: consensus from the brain tumor epidemiology consortium. *Cancer* **113**, 1953–1968 (2008).
- Lian, W., Wang, R., Xing, B. & Yao, Y. Fish intake and the risk of brain tumor: a meta-analysis with systematic review. *Nutr. J.* **16**, 1 (2017).
- Kaplan, S., Novikov, L. & Modan, B. Nutritional factors in the etiology of brain tumors potential role of nitrosamines, fat, and cholesterol. *Am. J. Epidemiol.* **146**, 832–841 (1997).
- Niedermaier, T., Behrens, G., Schmid, D., Schlecht, I., Fischer, B. & Leitzmann, M. F. Body mass index, physical activity, and risk of adult meningioma and glioma: a meta-analysis. *Neurology* **85**, 1342–1350 (2015).
- Edlinger, M., Strohmaier, S., Jonsson, H., Bjorge, T., Manjer, J., Borena, W. T. et al. Blood pressure and other metabolic syndrome factors and risk of brain tumour in the large population-based Me-Can cohort study. *J. Hypertens.* **30**, 290–296 (2012).
- Kyrtsis, A. P., Bondy, M. L. & Levin, V. A. Modulation of glioma risk and progression by dietary nutrients and antiinflammatory agents. *Nutr. Cancer* **63**, 174–184 (2011).
- Qin, S., Wang, M., Zhang, T. & Zhang, S. Vitamin E intake is not associated with glioma risk: evidence from a meta-analysis. *Neuroepidemiol.* **43**, 253–258 (2014).
- Kuan, A. S., Green, J., Kitahara, C. M., De González, A. B., Key, T., K. Reeves, G. et al. Diet and risk of glioma: combined analysis of 3 large prospective studies in the UK and USA. *Neuro. Oncol.* **21**, 944–952 (2019).
- Quach, P., El Sherif, R., Gomes, J. & Krewski, D. A systematic review of the risk factors associated with the onset and progression of primary brain tumours. *Neurotoxicology* **61**, 214–232 (2017).
- Spiller, W., Slichter, D., Bowden, J. & Davey Smith, G. Detecting and correcting for bias in Mendelian randomization analyses using gene-by-environment interactions. *Int. J. Epidemiol.* **48**, 702–712 (2019).
- Johansen, C., Schüz, J., Andreasen, A. M. S. & Dalton, S. O. Study designs may influence results: the problems with questionnaire-based case-control studies on the epidemiology of glioma. *Br. J. Cancer* **116**, 841–848 (2017).
- Burgess, S., Butterworth, A. & Thompson, S. G. Mendelian randomization analysis with multiple genetic variants using summarized data. *Genet. Epidemiol.* **37**, 658–665 (2013).
- Disney-Hogg, L., Sud, A., Law, P. J., Cornish, A. J., Kinnersley, B., Ostrom, Q. T. et al. Influence of obesity-related risk factors in the aetiology of glioma. *Brit. J. Cancer* **118**, 1020–1027 (2018).
- Saunders, C. N., Cornish, A. J., Kinnersley, B., Law, P. J., Claus, E. B., Il'yasova, D. et al. Lack of association between modifiable exposures and glioma risk: a Mendelian randomisation analysis. *Neuro. Oncol.* **22**, 207–215 (2020).
- Haycock, P. C., Li, D., Hunt, S., Lin, K., Rice, K., Martin, R. M. et al. Association between telomere length and risk of cancer and non-neoplastic diseases a mendelian randomization study. *JAMA Oncol.* **3**, 636–651 (2017).
- Walsh, K. M., Codd, V., Rice, T., Nelson, C. P., Smirnov, I. V., McCoy, L. S. et al. Longer genotypically-estimated leukocyte telomere length is associated with increased adult glioma risk. *Oncotarget* **6**, 42468–42477 (2015).
- Millard, L. A. C., Davies, N. M., Timpson, N. J., Tilling, K., Flach, P. A. & Smith, G. D. MR-PheWAS: hypothesis prioritization among potential causal effects of body mass index on many outcomes, using Mendelian randomization. *Sci. Rep.* **5**, 16645 (2015).
- Melin, B. S., Barnholtz-Sloan, J. S., Wrensch, M. R., Johansen, C., Il'yasova, D., Kinnersley, B. et al. Genome-wide association study of glioma subtypes identifies specific differences in genetic susceptibility to glioblastoma and non-glioblastoma tumors. *Nat. Genet.* **49**, 789–794 (2017).
- Hemani, G., Zheng, J., Elsworth, B., Wade, K. H., Haberland, V., Baird, D. et al. The MR-Base platform supports systematic causal inference across the human phenome. *eLife* **7**, 1–29 (2018).
- Stock, J. H., Wright, J. H. & Yogo, M. A survey of weak instruments and weak identification in generalized method of moments. *J. Bus. Econ. Stat.* **20**, 518–529 (2002).
- Shim, H., Chasman, D. I., Smith, J. D., Mora, S., Ridker, P. M., Nickerson, D. A. et al. A multivariate genome-wide association analysis of 10 LDL subfractions, and their response to statin treatment, in 1868 Caucasians. *PLoS ONE* **10**, e0120758 (2015).
- Palmer, T. M., Sterne, J. A. C., Harbord, R. M., Lawlor, D. A., Sheehan, N. A., Meng, S. et al. Instrumental variable estimation of causal risk ratios and causal odds ratios in mendelian randomization analyses. *Am. J. Epidemiol.* **173**, 1392–1403 (2011).

26. Didelez, V., Meng, S. & Sheehan, N. A. Assumptions of IV methods for observational epidemiology. *Stat. Sci.* **25**, 22–40 (2010).
27. Lawlor, D. A., Harbord, R. M., Sterne, J. A. C., Timpson, N. & Smith, G. D. Mendelian randomization: using genes as instruments for making causal inferences in epidemiology. *Stat. Med.* **27**, 1133–1163 (2008).
28. Hemani, G., Bowden, J. & Davey Smith, G. Evaluating the potential role of pleiotropy in Mendelian randomization studies. *Hum. Mol. Genet.* **27**, R195–R208 (2018).
29. Hartwig, F. P., Smith, G. D. & Bowden, J. Robust inference in summary data Mendelian randomization via the zero modal pleiotropy assumption. *Int. J. Epidemiol.* **46**, 1985–1998 (2017).
30. Bowden, J., Davey Smith, G., Haycock, P. C. & Burgess, S. Consistent estimation in Mendelian randomization with some invalid instruments using a weighted median estimator. *Genet. Epidemiol.* **40**, 304–314 (2016).
31. Bowden, J., Smith, G. D. & Burgess, S. Mendelian randomization with invalid instruments: effect estimation and bias detection through egger regression. *Int. J. Epidemiol.* **44**, 512–525 (2015).
32. Higgins, J. P. T., Thompson, S. G., Deeks, J. J. & Altman, D. G. Measuring inconsistency in meta-analyses. *BMJ* **327**, 557–560 (2003).
33. Higgins, J. P. T. & Thompson, S. G. Quantifying heterogeneity in a meta-analysis. *Stat. Med.* **21**, 1539–1558 (2002).
34. Bowden, J., Spiller, W., Del Greco, F. M., Sheehan, N., Thompson, J., Minelli, C. et al. Improving the visualization, interpretation and analysis of two-sample summary data Mendelian randomization via the radial plot and radial regression. *Int. J. Epidemiol.* **47**, 1264–1278 (2018).
35. RStudio Team. RStudio: Integrated Development Environment for R. (RStudio, PBC, Boston, MA, 2018). <http://www.rstudio.com/>.
36. Harrington, B. INKSCAPE, software version 0.92.4, (2019)
37. Brion, M. J. A., Shakhbazov, K. & Visscher, P. M. Calculating statistical power in Mendelian randomization studies. *Int. J. Epidemiol.* **42**, 1497–1501 (2013).
38. Rosato, V., Tavani, A., Negri, E., Serraino, D., Montella, M., Decarli, A. et al. Processed meat and colorectal cancer risk: a pooled analysis of three Italian case-control studies. *Nutr. Cancer* **69**, 732–738 (2017).
39. Remen, T., Pintos, J., Abrahamowicz, M. & Siemiatycki, J. Risk of lung cancer in relation to various metrics of smoking history: a case-control study in Montreal 11 medical and health sciences 1117 public health and health services. *BMC Cancer* **18**, 1275 (2018).
40. Wiedmann, M., Brunborg, C., Lindemann, K., Johannesen, T. B., Vatten, L., Helseth, E. et al. Body mass index and the risk of meningioma, glioma and schwannoma in a large prospective cohort study (The HUNT Study). *Brit. J. Cancer* **109**, 289–294 (2013).
41. Dai, Z. F., Huang, Q. L. & Liu, H. P. Different body mass index grade on the risk of developing glioma: a meta-analysis. *Chin. Neurosurg. J.* **1**, 7 (2015).
42. Kitahara, C. M., Linet, M. S., Brenner, A. V., Wang, S. S., Melin, B. S., Wang, Z. et al. Personal history of diabetes, genetic susceptibility to diabetes, and risk of brain glioma: a pooled analysis of observational studies. *Cancer Epidemiol. Biomark. Prev.* **23**, 47–54 (2014).
43. Demanelis, K., Jasmine, F., Chen, L. S., Chernoff, M., Tong, L., Shinkle, J. et al. Determinants of telomere length across human tissues. *Science*. **369**, eaaz6876 (2020).
44. Chow, S. C. & Chang, M. Adaptive design methods in clinical trials—a review. *Orphanet J. Rare Dis.* **3**, 11 (2008).
45. Bretz, F., Koenig, F., Brannath, W., Glimm, E. & Posch, M. Adaptive designs for confirmatory clinical trials. *Stat. Med.* **28**, 1181–1217 (2009).
46. Cardis, E., Richardson, L., Deltour, I., Armstrong, B., Feychting, M., Johansen, C. et al. The INTERPHONE study: design, epidemiological methods, and description of the study population. *Eur. J. Epidemiol.* **22**, 647–664 (2007).
47. Sanson, M., Hosking, F. J., Shete, S., Zelenika, D., Dobbins, S. E., Ma, Y. et al. Chromosome 7p11.2 (EGFR) variation influences glioma risk. *Hum. Mol. Genet.* **20**, 2897–2904 (2011).
48. Kinnerley, B., Labussière, M., Holroyd, A., Di Stefano, A. L., Broderick, P., Vijayakrishnan, J. et al. Genome-wide association study identifies multiple susceptibility loci for glioma. *Nat. Commun.* **6**, 8559 (2015).
49. Shete, S., Hosking, F. J., Robertson, L. B., Dobbins, S. E., Sanson, M., Malmer, B. et al. Genome-wide association study identifies five susceptibility loci for glioma. *Nat. Genet.* **41**, 899–904 (2009).
50. Rajaraman, P., Melin, B. S., Wang, Z., McKean-Cowdin, R., Michaud, D. S., Wang, S. S. et al. Genome-wide association study of glioma and meta-analysis. *Hum. Genet.* **131**, 1877–1888 (2012).
51. Amirian, E. S., Armstrong, G. N., Zhou, R., Lau, C. C., Claus, E. B., Barnholtz-Sloan, J. S. et al. The glioma international case-control study: a report from the genetic epidemiology of glioma international consortium. *Am. J. Epidemiol.* **183**, kww235 (2015).
52. Wrensch, M., Jenkins, R. B., Chang, J. S., Yeh, R. F., Xiao, Y., Decker, P. A. et al. Variants in the CDKN2B and RTEL1 regions are associated with high-grade glioma susceptibility. *Nat. Genet.* **41**, 905–908 (2009).



**Open Access** This article is licensed under a Creative Commons Attribution 4.0 International License, which permits use, sharing, adaptation, distribution and reproduction in any medium or format, as long as you give appropriate credit to the original author(s) and the source, provide a link to the Creative Commons license, and indicate if changes were made. The images or other third party material in this article are included in the article's Creative Commons license, unless indicated otherwise in a credit line to the material. If material is not included in the article's Creative Commons license and your intended use is not permitted by statutory regulation or exceeds the permitted use, you will need to obtain permission directly from the copyright holder. To view a copy of this license, visit <http://creativecommons.org/licenses/by/4.0/>.