



HAL
open science

RNA-Binding Proteins in Cardiomyopathies

De-Li Shi

► **To cite this version:**

De-Li Shi. RNA-Binding Proteins in Cardiomyopathies. *Journal of Cardiovascular Development and Disease*, 2024, 11 (3), pp.88. 10.3390/jcdd11030088 . hal-04526134

HAL Id: hal-04526134

<https://hal.sorbonne-universite.fr/hal-04526134>

Submitted on 29 Mar 2024

HAL is a multi-disciplinary open access archive for the deposit and dissemination of scientific research documents, whether they are published or not. The documents may come from teaching and research institutions in France or abroad, or from public or private research centers.

L'archive ouverte pluridisciplinaire **HAL**, est destinée au dépôt et à la diffusion de documents scientifiques de niveau recherche, publiés ou non, émanant des établissements d'enseignement et de recherche français ou étrangers, des laboratoires publics ou privés.



Review

RNA-Binding Proteins in Cardiomyopathies

De-Li Shi ^{1,2}

¹ Department of Medical Research, Affiliated Hospital of Guangdong Medical University, Zhanjiang 524001, China; de-li.shi@upmc.fr

² Laboratory of Developmental Biology, Centre National de la Recherche Scientifique, UMR7622, Institut de Biologie Paris-Seine (IBPS), Sorbonne University, 75005 Paris, France

Abstract: The post-transcriptional regulation of gene expression plays an important role in heart development and disease. Cardiac-specific alternative splicing, mediated by RNA-binding proteins, orchestrates the isoform switching of proteins that are essential for cardiomyocyte organization and contraction. Dysfunctions of RNA-binding proteins impair heart development and cause the main types of cardiomyopathies, which represent a heterogenous group of abnormalities that severely affect heart structure and function. In particular, mutations of RBM20 and RBFOX2 are associated with dilated cardiomyopathy, hypertrophic cardiomyopathy, or hypoplastic left heart syndrome. Functional analyses in different animal models also suggest possible roles for other RNA-binding proteins in cardiomyopathies because of their involvement in organizing cardiac gene programming. Recent studies have provided significant insights into the causal relationship between RNA-binding proteins and cardiovascular diseases. They also show the potential of correcting pathogenic mutations in RNA-binding proteins to rescue cardiomyopathy or promote cardiac regeneration. Therefore, RNA-binding proteins have emerged as promising targets for therapeutic interventions for cardiovascular dysfunction. The challenge remains to decipher how they coordinately regulate the temporal and spatial expression of target genes to ensure heart function and homeostasis. This review discusses recent advances in understanding the implications of several well-characterized RNA-binding proteins in cardiomyopathies, with the aim of identifying research gaps to promote further investigation in this field.

Keywords: cardiomyopathy; RNA-binding protein; post-transcriptional regulation; RBM20; RBM24; RBPMS; RBFOX; IGF2BP2; YTHDC1



Citation: Shi, D.-L. RNA-Binding Proteins in Cardiomyopathies. *J. Cardiovasc. Dev. Dis.* **2024**, *11*, 88. <https://doi.org/10.3390/jcdd11030088>

Academic Editor: Djamel Lebeche

Received: 19 February 2024

Revised: 1 March 2024

Accepted: 2 March 2024

Published: 5 March 2024



Copyright: © 2024 by the author. Licensee MDPI, Basel, Switzerland. This article is an open access article distributed under the terms and conditions of the Creative Commons Attribution (CC BY) license (<https://creativecommons.org/licenses/by/4.0/>).

1. Introduction

Cardiomyopathies are structural and functional abnormalities of the myocardium and represent a heterogenous group of cardiac disorders, including dilated cardiomyopathy (DCM), hypertrophic cardiomyopathy (HCM), restrictive cardiomyopathy (RCM), and arrhythmogenic cardiomyopathy (ACM) [1–3]. Although these cardiomyopathy phenotypes are characterized by distinct morphological and functional traits [4], they are all closely associated with heart failure, which represents the clinical syndrome of these cardiovascular diseases, as well as the most frequent cause of hospitalization and death worldwide [5,6]. Mutations or the dysregulated expression of cardiac myofibrillar structural and functional proteins are linked to the pathogenesis of cardiomyopathies [3]. In particular, truncated variants of the giant sarcomeric protein TITIN, which has an important structural role and signaling function in cardiac physiology and disease [7], have been identified as the main genetic cause of DCM [8–12]. The switch from the fetal to adult TITIN isoform plays an important role in cardiac stiffness and is mediated by splicing factors that belong to the family of RNA-binding proteins (RBPs). It is well established that RNA-binding motif protein 20 (RBM20) regulates *TITIN* alternative splicing and that its mutations are responsible for the DCM phenotype in humans [13]. Increasing evidence suggests that other RBPs also

critically contribute to the alternative splicing of sarcomeric genes. Thus, their dysfunctions are potentially involved in cardiomyopathies [14–16].

RBPs are major regulators of gene expression at the post-transcriptional level [17] and contribute to generating protein abundance and diversity within a cell [18,19]. They not only show dynamic expression between fetal and adult hearts under healthy conditions, but also become reactivated or repressed in heart failure [20,21], suggesting their important roles in promoting cardiac differentiation and maintaining cardiac homeostasis. Loss or the dysregulated activity of several RBPs have been closely associated with cardiomyopathies in humans or in animal models, as exemplified by RBM20 mutations in DCM patients [13]. With the expanded identification of the cardiac-specific RBPome, the contribution of RBP-mediated post-transcriptional regulation of cardiac-specific gene expression networks has gained considerable interest for better understanding the complexity of heart development and function [22–26]. Importantly, correcting pathogenic mutations in RBPs or manipulating their activity has the strong potential to rescue cardiomyopathy or promote cardiac regeneration after myocardial injury [27–29]. Therefore, RBPs have emerged as promising targets for therapeutic interventions for cardiovascular dysfunction [26,30]. Recent studies have not only further established the causal relationship between RBPs and cardiomyopathies but have also provided novel insights into the mechanism underlying disrupted cardiomyocyte structural and functional gene expression due to RBP dysfunction. Our knowledge on RBP-regulated heart development and cardiovascular disease is rapidly evolving. An update of current advances in this field will help to identify research gaps and promote future investigation.

2. RBPs Associated with Cardiomyopathies

The identification of gene mutations in human patients, associated with functional studies using reverse genetic approaches in animal models, such as mouse and zebrafish, has uncovered conserved as well as species-specific functions of RBPs in cardiac development. The following sections will discuss the recent understanding of well-characterized RBPs, including RBM20, RBM24, RBPMS, RBPMS2, RBFOX1, RBFOX2, and several readers of mRNA methylation, such as IGF2BP2 and YTHDC1, associated with cardiomyopathy in humans and/or animal models.

2.1. RBM20 Mutations Disrupt Cardiac-Specific Alternative Splicing in Cardiomyopathies

RBM20 contains two putative zinc finger domains and a central RNA recognition motif (RRM), followed by a highly conserved arginine/serine (RS)-rich region (Figure 1). The RRM binds to RNAs with a UCUU sequence to regulate alternative splicing [31]. Since the first report on *RBM20* as a DCM-related gene [32], a large number of heterozygous missense mutations, mainly located at an arginine-serine-arginine-serine-proline (RSRSP) stretch within the RS-rich region, have been identified in DCM patients [33–35], and their pathogenic effects have been recently validated in animal models or by using an induced pluripotent stem cell line [28,36–41]. These mutations perturb alternative splicing of the *TITIN* gene and many other targets, including the DCM-related *CAMK2D* (calcium/calmodulin-dependent protein kinase type II delta), leading to disrupted cardiac stiffness and abnormal intracellular calcium handling [13,34,35,42]. It has been shown that changes in the RSRSP stretch affect its phosphorylation, which may be important for the nuclear localization of RBM20 and are causative in DCM [43,44]. Indeed, RBM20 proteins with mutated RS-rich regions display sarcoplasmic localization and accumulate in cytoplasmic processing bodies, thus preventing their nuclear function [40,41,45]. Recent works have proposed other mechanisms underlying the mis-localization of RBM20 RS-domain variants. One study suggests that the RS domain represents a nuclear localization signal that mediates RBM20 nuclear transport independently of phosphorylation [41]. Another study shows that disruption in the RS region impairs the physical interaction of RBM20 with Transportin-3, which functions as a nuclear importer of RBM20 [40]. Although multiple mechanisms may account for the dysregulated post-transcriptional activity of mutant RBM20 proteins,

it is particularly interesting that correcting these pathogenic variants through precise base editing or promoting the interaction of RBM20 with its nuclear importer can redirect RBM20 nuclear localization and rescue DCM, at least in animal models [27,28,40].

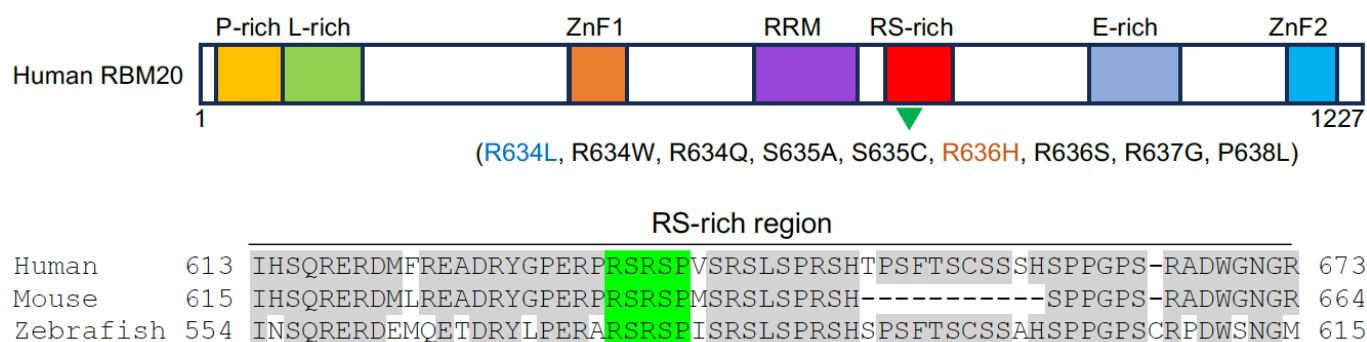


Figure 1. Schematic representation of human RBM20 protein structure. Functional domains are indicated by colored boxes (P-rich, proline-rich region; L-rich, leucine-rich region; E-rich, glutamate-rich region; ZnF, zinc finger domain) and the alignment of amino acids in the RS-rich region from three vertebrate species (human, NP_001127835.2; mouse, NP_001164318.1; zebrafish, XP_021325295.1). Several validated pathogenic mutations in the RSRSP stretch are shown under the schema (green arrowhead). Conserved residues are shadowed in grey. The RS-rich region is indicated in green and the putative nuclear localization signal in the RS-rich region is underlined [41]. Note that the R634L variant (blue) co-segregates with left ventricular non-compaction cardiomyopathy [46] and the R636H variant (orange) may be also associated with HCM [47].

The human *TITIN* gene contains 364 exons with 363 coding ones. It produces various protein isoforms with different functions through alternative splicing [48]. Cardiac muscle expresses two main *TITIN* isoforms: a more compliant N2BA isoform with a longer extensible I-band region and a stiff N2B isoform, which serve as long and short molecular springs, respectively [49]. Different proportions of these isoforms expressed in fetal and adult hearts confer the passive stiffness of cardiac muscle [48,50]. However, changes in their relative levels can affect cardiac function and lead to DCM. RBM20 functions as a splicing repressor of *TITIN* pre-mRNA [51,52]. It prevents the inclusion of exons 51–218, which encode I-band regions, and leads to the expression of the shorter and stiffer N2B isoform of *TITIN* [10]. Thus, the dysfunction of RBM20 affects *TITIN* isoform switching during heart development and disrupts cardiomyocyte stiffness. Nevertheless, mis-localized pathogenic RBM20 variants in DCM not only retain their splicing activity [40], but also mediate distinct mRNA interactions to alter other processes of post-transcriptional regulation that occur in the cytoplasm, such as circular RNA production and alternative polyadenylation [45]. Therefore, RBM20 mutations can cause DCM through splicing-dependent and splicing-independent mechanisms.

There is also evidence that RBM20 may be a candidate gene for HCM [47,53]. Exome sequencing of HCM patients has identified deleterious variants of RBM20, but it seems that these mutations affect structural and functional domains other than those identified in DCM patients [53]. Thus, it is still unclear how they change RBM20 localization and post-transcriptional regulatory activity. A more recent report shows that the R636H pathogenic variant of RBM20 associated with DCM is also present in HCM [47]. These observations suggest that, to some extent, RBM20 may contribute to HCM through a similar mechanism as in DCM. Further studies are necessary to firmly establish the causal relationship between RBM20 mutations and the pathogenesis of HCM.

2.2. RBM24 Is Associated with DCM

Rbm24 is highly conserved from *C. elegans* to mammals [54], harboring a single RRM at the N-terminal region and a more divergent C-terminal half but with several characteristic motifs (Figure 2). The RRM binds to AU/U-rich ligands that are present in a wide spectrum

of target mRNAs [55]. In vertebrate embryos, the heart-specific expression of Rbm24 can be detected as early as in the heart fields or the cardiac crescent [56–60], and this is activated after the expression of Nkx2.5 [56], suggesting that Rbm24 may be induced by and function downstream of cardiac-specific transcription factors. Zebrafish have two *rbm24* paralogs, *rbm24a* and *rbm24b*. Rbm24a protein exhibits a higher degree of overall identity and shows an identical expression pattern to Rbm24 in other vertebrates [54,57].

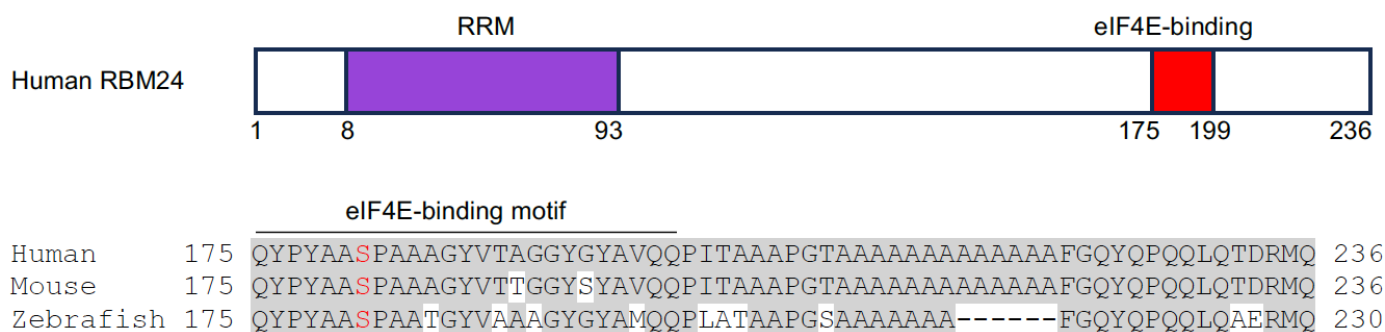


Figure 2. Schematic representation of human RBM24 protein structure and the amino acid alignment of the C-terminal region from three vertebrate species (human, NP_001137414.1; mouse, NP_001074894.1; zebrafish, NP_998030.1). The RRM is indicated in purple and the eukaryotic initiation factor 4E (eIF4E)-binding motif is shown by red color box. Conserved residues are shadowed in grey. The phosphorylatable serine residue (S) in the eIF4E-binding motif is indicated in red [61].

The loss of Rbm24 in zebrafish and mice produces a strong phenotype of heart abnormalities, characterized by defective looping, the occurrence of cardiac edema, and impaired valve development [58,61–63]. The knockout of *Rbm24* in mice leads to the complete exclusion or minor inclusion of muscle-specific exons in E11.5 embryos [63]. Importantly, the affected genes are closely associated with cardiogenesis, sarcomere assembly, and the pathogenesis of DCM, and include *Naca*, *Fxr1*, *Abcc9*, *Usp25*, and *Usp28*. This is further supported by the observation that the knockdown of *rbm24a* in zebrafish impairs myofibrillar integrity by disrupting sarcomere organization [60]. Mechanistically, Rbm24 prevents the repression of exon inclusion mediated by PTBP1 (polypyrimidine tract binding protein 1) and hnRNP A1/A2 (heterogeneous nuclear ribonucleoprotein A1/A2) through binding to an intronic splicing enhancer and functioning as an activator of cardiac muscle-specific exon inclusion [63]. The heart-specific conditional knockout of *Rbm24* in postnatal mice disrupts the isoform transition of Titin protein, leading to progressive DCM [64]. Different from RBM20, the loss of RBM24 in human embryonic stem cells or in mice prevents the inclusion of exons coding for the N-terminal Z-repeat domain of TITIN, which binds to the major Z-disc component α -ACTININ 2 [64,65]. In addition, at early stages of induced cardiac differentiation from human embryonic stem cells, RBM24 is also involved in the alternative splicing of α -ACTININ 2 transcripts. It promotes the inclusion of exon 6, which codes for an actin-binding domain. This facilitates the TITIN-mediated interaction of α -ACTININ 2 with cardiac-specific MYH6, which can subsequently substitute non-muscle MYH10 [65]. Therefore, RBM24 plays a conserved role in cardiac myofibrillogenesis by regulating sarcomere assembly and integrity.

It is of note that Rbm24 is also involved in regulating *CAMK2D* splicing. The deletion of Rbm24 in mice causes aberrant expression of the CAMK2C isoform, leading to alterations in calcium handling and prolongation of the QT interval [66]. Thus, Rbm24 deficiency may cause electrophysiological abnormalities and disrupt cardiac rhythm.

In addition to the regulation of isoform switching for sarcomeric proteins, Rbm24 also functions in other post-transcriptional processes to promote heart development. It has been shown that Rbm24 represents a transcriptional target and a translational regulator of p53 in the mouse embryonic heart. In *Rbm24* homozygous mutant mice, the aberrant activation of p53-dependent apoptosis partly contributes to endocardial cushion defects,

growth retardation, and embryonic lethality at E12.5–13.5 [61]. Vertebrate Rbm24 proteins display a highly conserved short amino acid stretch (residues 175–199 in human RBM24), which interacts with eukaryotic initiation factor 4E (eIF4E) to prevent its association with the 5'-cap of *p53* mRNA and assembly of the translation initiation complex, thereby repressing *p53* mRNA translation [61]. However, phosphorylation of the serine residue in the eIF4E-binding motif of Rbm24 releases its interaction with eIF4E, thus rendering it as a translational activator [61]. This suggests that Rbm24 regulates heart development, function, and homeostasis through interaction with its partners and that the eIF4E-binding motif may represent a potential therapeutic target for modulating Rbm24 activity. The regulation of mRNA translation is consistent with the dynamic subcellular localization of Rbm24 during muscle differentiation. At least in skeletal muscle, Rbm24 is localized in the cytoplasm of fate-committed myoblasts but is translocated in the nucleus of differentiated myofibers [67]. Whether and how Rbm24 undergoes cytoplasm-to-nuclear translocation during cardiomyocyte differentiation merits future investigation.

Although the involvement of RBM24 in human heart disease remains to be determined, there is evidence showing the up-regulation of RBM24 in heart failure, which is associated with fetal-specific gene expression and protein isoform switching [20]. Given the strikingly conserved cardiac-specific expression of RBM24 during early development, it will be of interest to decipher the origin and mechanism of cardiac defects due to RBM24 deficiency, such as the impaired differentiation of progenitor cells, the disrupted morphogenesis of heart chambers or endocardial cushions, or the direct dysregulation of cardiac structural and functional genes. There is a possibility that Rbm24 displays dynamic functions dependent on its subcellular localization and its interaction with protein partners.

2.3. Loss of RBPMS and RBPMS2 Causes DCM or HCM

RNA Binding Protein with Multiple Splicing (RBPMS) variants and RBPMS2 cluster into two related families of RBPs with an RRM near the N-terminal region [22,68]. The RRM binds tandem CAC motifs with a variable spacer in mRNA targets [69]. RBPMS and RBPMS2 are expressed in the myocardium during development and in the adult of different vertebrate species [68]. Recent studies in vertebrate models have demonstrated their potential involvement in different types of cardiomyopathies. *Rbpms* plays an important role in post-natal cardiac function. The constitutive knockout of *Rbpms* in mice leads to excessive trabeculation associated with reduced thickness of the ventricles, reminiscent of non-compaction cardiomyopathy [70]. The cardiac-specific deletion of *Rbpms* in mice causes severe defects in cardiomyocyte contraction, resulting in DCM and early lethality in the adult [71]. The loss of *Rbpms* in the heart also disrupts the alternative splicing of sarcomeric genes, including *Titin* and *Pdlim5*, by preventing the inclusion of exons. In conditional *Rbpms* knockout hearts, the skipping of exons 11 and 47 in the *Titin* transcript leads to the expression of truncated N2BA and N2B isoforms, which may contribute to impaired cardiomyocyte contractility. The same splicing defects are also present in RBPMS-deficient cardiomyocytes derived from human induced pluripotent stem cells [71]. This suggests the conserved function of RBPMS in cardiac function and raises the possibility that mutations or the dysfunction of RBPMS may contribute to DCM in humans.

In zebrafish, both *rbpms2a* and *rbpms2b* are enriched in the *nkx2.5*-positive cell population. The simultaneous loss of *rbpms2a* and *rbpms2b* does not seem to impact cardiac morphogenesis but causes cardiac edema and early cardiac dysfunction with reduced ejection fraction [72]. RNA-seq analysis indicates that *Rbpms2* regulates the alternative splicing of several genes involved in cardiac function, such as *mybpc3* and *myom2a*, which encode sarcomeric proteins. Consistently, *rbpms2* mutant zebrafish display disorganized myofibrillar arrays and defective calcium handling [72]. Importantly, MYBPC3 mutations are most frequently detected in patients with HCM [73], and MYOM2 mutations are also identified in patients with HCM, as well as Tetralogy of Fallot [74]. It is of note that RBPMS2-deficient human cardiomyocytes also display the same defective myofibril structure and calcium

handling as zebrafish *rbpms2* mutants [72], suggesting the conserved molecular and cellular function of this RBP in heart development and disease.

2.4. *Rbfox1 and Rbfox2 Are Involved in the Pathogenesis of Heart Disease*

The RNA binding forkhead box homolog (RBFOX) family proteins have three members in vertebrates (*Rbfox1*, *Rbfox2*, and *Rbfox3*). They display an evolutionarily conserved RRM flanked by diversified N- and C-terminal regions (Figure 3). The RRM from all three *Rbfox* proteins binds to the UGCAUG motif in target mRNAs [75]. Functional studies indicate that *Rbfox1* and *Rbfox2* are involved in the regulation of heart development and homeostasis. RBFOX1 expression is markedly decreased in human DCM hearts and its deficiency causes pressure overload-induced heart failure in a mouse model. Transcriptomic profiling reveals that *Rbfox1* functions as a prominent regulator of cardiac-specific alternative splicing and is required for isoform switching of the transcription factor MEF2 [76]. Consistently, recent studies further show that *Rbfox1* mediates mRNA splicing to promote cardiomyocyte maturation [77].

Similarly, RBFOX2 regulates a large program of cardiac-specific alternative splicing events that are important for heart function. In diabetic patients, the disruption of RBFOX2 homeostasis in the heart leads to autoregulation of its exon 6 exclusion [78]. This exon codes for the second half of the RRM, and its in-frame deletion leads to the expression of a truncated protein isoform that acts as a dominant negative mutant to repress *Rbfox*-regulated alternative splicing [79]. The dysregulation of RBFOX2 activity affects the gene function associated with cytoskeleton and calcium handling, leading to cardiac complications before the onset of diabetic cardiomyopathy [78]. Importantly, the heterozygous loss of *RBFOX2* function results from de novo frameshift, nonsense, or splice site mutations, and the reduced expression of *RBFOX2* due to copy number loss is significantly enriched in patients with hypoplastic left heart syndrome (HLHS) displaying the left ventricle obstruction phenotype [80–83]. The frameshift mutation of *RBFOX2* is predicted to introduce a premature stop codon, whereas the splice site mutation is expected to include intron 10 in the mRNA. Nonsense mutation truncates a portion of the C-terminal region that includes a sequence coded by an alternative exon 11 (Figure 3). This domain contains several tyrosine residues involved in RBFOX2 subcellular localization [82] and the assembly of a higher-order complex of proteins to enhance RBFOX2 splicing activity [84]. Consistent with the requirement for heart function in humans, the knockout of *Rbfox2* in mice causes DCM, followed by heart failure [85]. Recently, it has been shown that *Rbfox2* is involved in regulating the alternative splicing events that influence the communication between cardiomyocytes and the extracellular matrix. The loss of *Rbfox2* in mice produces cardiovascular development defects similar to those observed in HLHS [86].

Zebrafish have five *rbfox* genes (*rbfox1*, *rbfox1l*, *rbfox2*, *rbfox3a*, and *rbfox3b*). The knockdown of *rbfox1* alters the cardiac-specific isoform expression of several key proteins regulating cardiomyocyte structure and function [87]. Further confirming the causal relationship of RBFOX2 loss of function with HLHS, zebrafish mutants lacking *rbfox1l* and *rbfox2* develop cardiovascular defects similar to those observed in HLHS patients, including the reduced size and disorganized architecture of ventricular cardiomyocytes, an obstructed aorta, and the absence of endocardial cushions [88]. Mechanistically, the loss of *rbfox1l* and *rbfox2* affects the expression and alternative splicing of genes involved in sarcomere assembly and mitochondrial respiration. It is of note that cardiac defects in *rbfox1l* and *rbfox2* mutants can be rescued by human RBFOX2 but not by HLHS-related RBFOX2 mutant variants [88]. Thus, these observations demonstrate the conserved functions of RBFOX proteins in heart development and cardiovascular disease.

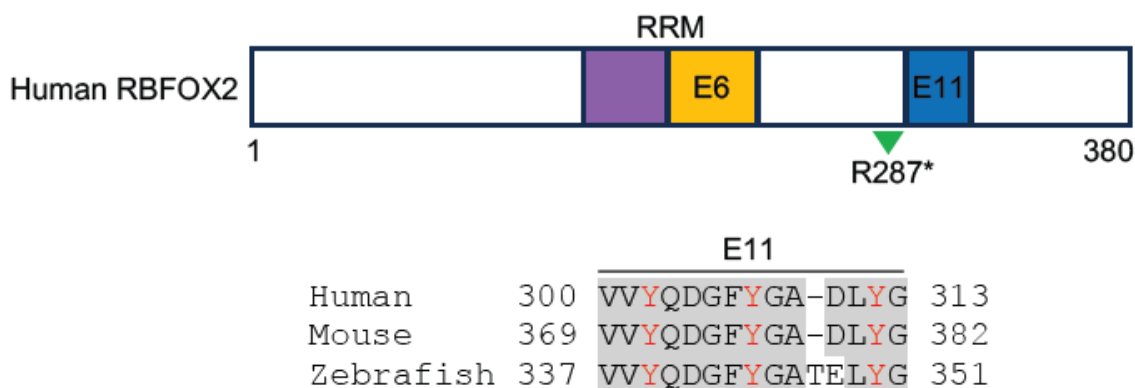


Figure 3. Schematic representation of human RBFOX2 protein structure and the alignment of sequences involved in RBFOX2 subcellular localization and formation of the multiprotein complex (human, NM_001031695.2; mouse, NP_444334.3; zebrafish, XP_021332501.1). These sequences are coded by exon 11 (blue box) in human and mouse and by exon 9 in zebrafish. Conserved residues are shadowed in grey; Tyrosine residues essential for RBFOX2 subcellular localization and complex formation are indicated in red [83,84]. The RRM is indicated in purple- and orange-colored boxes. Splicing-regulated exon 6 (E6), which codes for the second half of the RRM, and the R287* nonsense mutation identified in HLHS patients (green arrowhead) are also shown.

2.5. RNA-Binding Proteins Associated with RNA Methylation in Heart Disease

N6-methyladenosine (m6A) is thought to be the most abundant modification in eukaryotic mRNAs, and this modification plays a central role in the post-transcriptional regulation of gene expression [89,90]. It is a dynamic and reversible process coordinated by methyltransferases, such as METTL3/14/16, and demethylases, including FTO and ALKBH5. Several RBP readers, including IGF2BP1/2/3, YTHDC1/2, YTHDF1/2/3, and hnRNPA2B1/C, function to recognize m6A-modified target transcripts and contribute to their alternative splicing, translocation, stability, and translation [90]. Evidence is accumulating that the regulation of mRNA modification is closely associated with cardiovascular disease [91].

IGF2BP2 (insulin-like growth factor 2 mRNA-binding protein 2) shows higher expression in the hearts of DCM patients [92]. The transgenic expression of human IGF2BP2 in mouse hearts causes DCM by inhibiting the expression of sarcomeric and mitochondrial proteins, leading to disorganized sarcomeres and fragmented mitochondria [92]. Nevertheless, the overexpression of IGF2BP2 has no effect on the expression of Titin and Mybpc3, suggesting that it regulates distinct sets of sarcomeric genes. There is a possibility that IGF2BP2-induced cardiac remodeling represents an adaptive response to cardiac stress. Yet, it is still unclear whether this is mediated by interactions with the methylation machinery. Thus, the post-transcriptional mechanism underlying IGF2BP2 function in heart disease requires further investigation, and it will be interesting to examine whether modulating the expression or activity of IGF2BP2 could rescue cardiac dysfunction in DCM.

The cardiac-specific conditional knockout of *YTHDC1* in mice causes DCM by inducing left ventricular chamber enlargement and disorganized sarcomere arrangement, leading to decreased cardiomyocyte contractility and severe systolic dysfunction [93]. Mechanistically, YTHDC1 binds to m6A-modified *Titin* mRNA, and the loss of YTHDC1 increases the expression ratio of N2BA to N2B Titin isoforms [93]. This suggests that YTHDC1 may be involved in regulating cardiac stiffness by facilitating the inclusion of exons that code for the more compliant N2BA isoform. Although it remains to be determined whether other m6A readers of the methylation machinery are involved in cardiomyopathy, several lines of recent evidence indicate that YTHDF1, YTHDF2, and YTHDF3, which either promote mRNA translation or reduce mRNA stability [89], are required for heart development and function. YTHDF1 and YTHDF3 coordinate the differentiation of cardiomyocytes from mouse embryonic stem cells [94], and YTHDF1 can suppress cardiac hypertrophy in an m6A-dependent manner [95]. The loss of YTHDF2 in the cardiomyocytes of adult mice

leads to abnormal cardiac remodeling and cardiac function by disrupting the stability and translation of its m6A-modified target transcripts, suggesting that it plays a role in cardiac homeostasis [96,97]. There is also evidence showing that hnRNPC is up-regulated in the sarcomeric Z-disc and likely plays a role in the pathological remodeling of the extracellular matrix [98]. Altogether, these data suggest that the interactions between m6A readers and their mRNA targets contribute to maintain cardiomyocyte integrity and cardiac contractile function.

3. Discussion

Accumulating evidence has shed light on the RBP-mediated post-transcriptional regulation of gene expression in heart development and disease. Notably, RBPs contribute to establish an RNA regulatory network that is essential for cardiomyocyte formation and integrity, cardiac contraction, and the maintenance of cardiac homeostasis. Several RBPs, including RBM20 and RBFOX2, are associated with human cardiomyopathies. Functional studies in different vertebrate models have also demonstrated the importance of several well-characterized RBPs, including Rbm24, Rbpms, Rbpms2, Rbfox1, Igf2bp2, and Ythdc1, in regulating the intrinsic post-transcriptional circuit governing sarcomere assembly, mitochondrial respiration, cardiomyocyte organization, and extracellular matrix remodeling (Table 1). Therefore, they are potential candidate genes for cardiovascular diseases. Further studies are necessary to explore how their dysfunctions may be associated with different types of human cardiomyopathies.

Table 1. Brief summary of the RBPs associated with cardiomyopathies in humans and/or animal models.

RBPs	Mutations or Knockout	Cardiovascular Phenotypes	Dysregulated Target Genes	References
RBM20	Heterozygous missense mutations in human patients	DCM and likely HCM in humans	Defective splicing of <i>Titin</i> , <i>Camk2d</i> , and many other sarcomeric genes	[13,32,42,47,53]
RBM24	Knockout in mice, zebrafish, and human embryonic stem cells	DCM and prolongation of the QT interval in mice	Defective splicing of <i>Titin</i> , <i>Camk2d</i> , α -actinin 2, and other muscle-specific genes; increased <i>p53</i> mRNA translation	[61,64–66]
RBPMS	Knockout in mice and human cardiomyocytes	Non-compaction cardiomyopathy and DCM in mice	Defective splicing of <i>Titin</i> , <i>Pdlim5</i> , and cardiac myofibrillogenesis genes	[70,71]
RBPMS2	Knockout in zebrafish and human cardiomyocytes	Cardiac defects in zebrafish reminiscent of HCM	Defective splicing of <i>Rbfox2</i> , <i>Mybpc3</i> , <i>Slc8a1</i> , and <i>Myom2a</i>	[72]
RBFOX1	Knockout in mice and knockdown in zebrafish	Cardiac hypertrophy, cardiomyopathy, and heart failure	Defective splicing of <i>Mef2</i> in mice, and <i>huG</i> , <i>actn3a</i> , <i>ptpla</i> , <i>camk2g1</i> , and <i>ktn1</i> in zebrafish	[76,87]
RBFOX2	De novo frameshift, nonsense, or splice site mutations in HLHS human patients; knockout in mice and zebrafish	HLHS in humans and zebrafish (<i>rbfox1/2</i> mutants); DCM in mice	Defective splicing of sarcomere components (<i>tpm1</i> , <i>tpm3</i> , and <i>tnnt3b</i>), MICOS complex components (<i>mic19a</i> and <i>mic19b</i>), and cytoskeletal components (<i>pdlim5b</i> , <i>alcama</i> , and <i>fnnl3</i>)	[80–83,85,88]
IGF2BP2	Overexpression in mice	DCM in mice	Reduced expression of sarcomeric and mitochondrial proteins (<i>Titin</i> and <i>Mybpc3</i> unaffected)	[92]
YTHDC1	Knockout in mice	DCM in mice	Defective splicing of <i>Titin</i>	[93]

It is of note that cardiomyopathy-associated RBPs display both redundant and specific regulatory functions in cardiac alternative splicing, which is important for the expression and switching of cardiac-specific protein isoforms. Therefore, the interplay between differ-

ent RBPs coordinates the alternative splicing events of common and specific target genes, whereas variation in the expression levels of individual RBPs may cause aberrant splicing and may contribute to cardiac disease [99]. It has been shown that Rbm20 and Rbm24 physically interact to regulate alternative splicing of the *Enigma homolog (Enh)* gene, also known as *Pdlim5*. Although Rbm20 or Rbm24 individually display weak or no activity on *Enh* splicing, they cooperate to promote expression of the Enh3 and Enh4 isoforms of *Enh*, which lack the LIM domain and function to repress cardiac hypertrophy [100]. It is also worth mentioning that many other RBPs, which are not discussed in this review, are involved in regulating the alternative splicing of cardiac genes, although no cardiomyopathy phenotypes were firmly associated with loss of their function. For example, the cardiomyocyte-specific deletion of *Mbnl1* and *Mbnl2* in mice causes heart spliceopathy [101], and the conditional knockout of *QKI* in the cardiomyocytes of adult mice leads to heart failure by disrupting the alternative splicing of cardiac genes with functions in the sarcomere and cytoskeleton [102]. Thus, we may expect that their combined actions coordinate alternative splicing events in heart development, function, and homeostasis. Indeed, it is suggested that, similar to the loss of Rbm24, aberrant splicing due to the dysregulated expression of MBNL and QKI could contribute to the disease mechanism underlying the pathogenesis of heart failure [99]. Since many RBPs are dysregulated in cardiac hypertrophy or heart failure, modulating their expression or activity may represent a potential to rescue cardiovascular dysfunction [103].

Although RBPs act as prominent regulators of cardiac-specific alternative splicing, other mechanisms of post-transcriptional regulation may be also defective following the loss of their function. In this regard, it has been shown that loss of Rbm24 leads to cardiac malformations by promoting *p53* mRNA translation and the aberrant activation of p53-dependent apoptosis [61]. Indeed, Rbm24 can regulate the expression of target transcripts in murine and rat cardiomyocytes through multiple mechanisms, including alternative 3-UTR length, alternative start site, and mRNA destabilization [104]. Similarly, in human embryonic stem cells and cardioids, Rbpms controls a specialized mRNA translation circuit to specify cardiac mesoderm and promote cardiac morphogenesis [105]. In H9c2 rat myoblasts, the deletion of *Rbfox2* affects the expression of contractile and mitochondrial genes via alternative polyadenylation [106]. Igf2bp2 generally functions as an m6A reader and regulates mRNA stability [89]. Although the post-transcriptional mechanism by which its up-regulation induces cardiac remodeling remains unclear, there is a possibility that this induces DCM by disrupting the translation of target mRNAs [92]. Thus, RBPs function in a manner that is dependent on developmental stages, subcellular localization, and physiological or pathological conditions. Further studies are necessary to identify the protein partners and mRNA targets of RBPs for better understanding of the post-transcriptional mechanisms underlying their context-dependent regulatory activity in heart development and cardiomyopathy.

It is worth mentioning that the identification of gene mutations in human patients, combined with mechanistic analyses in animal models, has greatly contributed to our understanding of the RBP-regulated post-transcriptional mechanisms in heart disease. In addition to different mammalian models, zebrafish have become particularly attractive for the live imaging of heart morphogenesis and cardiac dysfunction. Though with a two-chambered heart, zebrafish display largely conserved core regulatory circuits and the cellular lineages essential for cardiac development [107,108]. Therefore, they are widely used for modeling human cardiac disease, with advantages and limitations [109,110]. By employing appropriate and effective experimental strategies, zebrafish represent one of the ideal models for investigating the origin of cardiac defects [111].

4. Conclusions

RBPs are clearly involved in the pathogenesis of cardiomyopathies, but the challenge remains to decipher the molecular mechanisms underlying their dysfunctions associated with dysregulated target gene expression. Recent studies have not only identified new can-

didate RBPs for cardiomyopathies but have also provided further mechanistic insights into the causal relationship between mutations or dysfunctions in RBPs and cardiac disease. Importantly, the possibility of correcting pathogenic mutations in RBPs or manipulating their activity presents a strong potential to rescue cardiomyopathies or promote cardiac regeneration. Therefore, RBPs have emerged as promising targets for therapeutic interventions for cardiovascular dysfunction.

Funding: This research was funded by the National Natural Science Foundation of China (grant number 32070813), the French Muscular Dystrophy Association (AFM-Téléthon grant number 23545), annual supports from the Centre National de la Recherche Scientifique (CNRS), and Sorbonne University, and The APC was funded by the National Natural Science Foundation of China.

Institutional Review Board Statement: Not applicable.

Informed Consent Statement: Not applicable.

Data Availability Statement: No new data were created in this work.

Conflicts of Interest: The author declares no conflicts of interest.

References

- Braunwald, E. Cardiomyopathies: An overview. *Circ. Res.* **2017**, *121*, 711–721. [[CrossRef](#)] [[PubMed](#)]
- Brieler, J.; Breeden, M.A.; Tucker, J. Cardiomyopathy: An overview. *Am. Fam. Physician* **2017**, *96*, 640–646. [[PubMed](#)]
- Ciarambino, T.; Menna, G.; Sansone, G.; Giordano, M. Cardiomyopathies: An overview. *Int. J. Mol. Sci.* **2021**, *22*, 7722. [[CrossRef](#)] [[PubMed](#)]
- Arbelo, E.; Protonotarios, A.; Gimeno, J.R.; Arbustini, E.; Barriales-Villa, R.; Basso, C.; Bezzina, C.R.; Biagini, E.; Blom, N.A.; de Boer, R.A.; et al. 2023 ESC Guidelines for the management of cardiomyopathies. *Eur. Heart J.* **2023**, *44*, 3503–3626. [[CrossRef](#)] [[PubMed](#)]
- Seferović, P.M.; Polovina, M.; Bauersachs, J.; Arad, M.; Ben Gal, T.; Lund, L.H.; Felix, S.B.; Arbustini, E.; Caforio, A.L.P.; Farmakis, D.; et al. Heart failure in cardiomyopathies: A position paper from the Heart Failure Association of the European Society of Cardiology. *Eur. J. Heart Fail.* **2019**, *21*, 553–576. [[CrossRef](#)] [[PubMed](#)]
- Ziaeeian, B.; Fonarow, G.C. Epidemiology and aetiology of heart failure. *Nat. Rev. Cardiol.* **2016**, *13*, 368–378. [[CrossRef](#)] [[PubMed](#)]
- Eldemire, R.; Tharp, C.A.; Taylor, M.R.G.; Sbaizero, O.; Mestroni, L. The sarcomeric spring protein Titin: Biophysical properties, molecular mechanisms, and genetic mutations associated with heart failure and cardiomyopathy. *Curr. Cardiol. Rep.* **2021**, *23*, 121. [[CrossRef](#)]
- Fomin, A.; Gärtner, A.; Cyganek, L.; Tiburcy, M.; Tuleta, I.; Wellers, L.; Folsche, L.; Hobbach, A.J.; von Frieling-Salewsky, M.; Unger, A.; et al. Truncated titin proteins and titin haploinsufficiency are targets for functional recovery in human cardiomyopathy due to TTN mutations. *Sci. Transl. Med.* **2021**, *13*, eabd3079. [[CrossRef](#)]
- Herman, D.S.; Lam, L.; Taylor, M.R.; Wang, L.; Teekakirikul, P.; Christodoulou, D.; Conner, L.; DePalma, S.R.; McDonough, B.; Sparks, E.; et al. Truncations of titin causing dilated cardiomyopathy. *N. Engl. J. Med.* **2012**, *366*, 619–628. [[CrossRef](#)]
- Loescher, C.M.; Hobbach, A.J.; Linke, W.A. Titin (TTN): From molecule to modifications, mechanics, and medical significance. *Cardiovasc. Res.* **2022**, *118*, 2903–2918. [[CrossRef](#)]
- McAfee, Q.; Chen, C.Y.; Yang, Y.; Caporizzo, M.A.; Morley, M.; Babu, A.; Jeong, S.; Brandimarto, J.; Bedi, K.C., Jr.; Flam, E.; et al. Truncated titin proteins in dilated cardiomyopathy. *Sci. Transl. Med.* **2021**, *13*, eabd7287. [[CrossRef](#)] [[PubMed](#)]
- Vikhorev, P.G.; Vikhoreva, N.N.; Yeung, W.; Li, A.; Lal, S.; Dos Remedios, C.G.; Blair, C.A.; Guglin, M.; Campbell, K.S.; Yacoub, M.H.; et al. Titin-truncating mutations associated with dilated cardiomyopathy alter length-dependent activation and its modulation via phosphorylation. *Cardiovasc. Res.* **2022**, *118*, 241–253. [[CrossRef](#)] [[PubMed](#)]
- Guo, W.; Schäfer, S.; Greaser, M.L.; Radke, M.H.; Liss, M.; Govindarajan, T.; Maatz, H.; Schulz, H.; Li, S.; Parrish, A.M.; et al. RBM20, a gene for hereditary cardiomyopathy, regulates titin splicing. *Nat. Med.* **2012**, *18*, 766–773. [[CrossRef](#)] [[PubMed](#)]
- Beqqali, A. Alternative splicing in cardiomyopathy. *Biophys. Rev.* **2018**, *10*, 1061–1071. [[CrossRef](#)]
- Hasimbegovic, E.; Schweiger, V.; Kastner, N.; Spannbaauer, A.; Traxler, D.; Lukovic, D.; Gyöngyösi, M.; Mester-Tonczar, J. Alternative splicing in cardiovascular disease—A survey of recent findings. *Genes* **2021**, *12*, 1457. [[CrossRef](#)] [[PubMed](#)]
- Weeland, C.J.; van den Hoogenhof, M.M.; Beqqali, A.; Creemers, E.E. Insights into alternative splicing of sarcomeric genes in the heart. *J. Mol. Cell. Cardiol.* **2015**, *81*, 107–113. [[CrossRef](#)]
- Shi, D.L.; Grifone, R. RNA-binding proteins in the post-transcriptional control of skeletal muscle development, regeneration and disease. *Front. Cell Dev. Biol.* **2021**, *9*, 738978. [[CrossRef](#)]
- Gebauer, F.; Schwarzl, T.; Valcárcel, J.; Hentze, M.W. RNA-binding proteins in human genetic disease. *Nat. Rev. Genet.* **2021**, *22*, 185–198. [[CrossRef](#)]
- Glisovic, T.; Bachorik, J.L.; Yong, J.; Dreyfuss, G. RNA-binding proteins and post-transcriptional gene regulation. *FEBS Lett.* **2008**, *582*, 1977–1986. [[CrossRef](#)]

20. D'Antonio, M.; Nguyen, J.P.; Arthur, T.D.; Matsui, H.; Donovan, M.K.R.; D'Antonio-Chronowska, A.; Frazer, K.A. In heart failure reactivation of RNA-binding proteins is associated with the expression of 1,523 fetal-specific isoforms. *PLoS Comput. Biol.* **2022**, *18*, e1009918. [[CrossRef](#)]
21. Riechert, E.; Kmietczyk, V.; Stein, F.; Schwarzl, T.; Sekaran, T.; Jürgensen, L.; Kamuf-Schenk, V.; Varma, E.; Hofmann, C.; Rettel, M.; et al. Identification of dynamic RNA-binding proteins uncovers a Cpeb4-controlled regulatory cascade during pathological cell growth of cardiomyocytes. *Cell Rep.* **2021**, *35*, 109100. [[CrossRef](#)] [[PubMed](#)]
22. Blech-Hermoni, Y.; Ladd, A.N. RNA binding proteins in the regulation of heart development. *Int. J. Biochem. Cell Biol.* **2013**, *45*, 2467–2478. [[CrossRef](#)] [[PubMed](#)]
23. de Bruin, R.G.; Rabelink, T.J.; van Zonneveld, A.J.; van der Veer, E.P. Emerging roles for RNA-binding proteins as effectors and regulators of cardiovascular disease. *Eur. Heart J.* **2017**, *38*, 1380–1388. [[CrossRef](#)] [[PubMed](#)]
24. Kelaini, S.; Chan, C.; Cornelius, V.A.; Margariti, A. RNA-binding proteins hold key roles in function, dysfunction, and disease. *Biology* **2021**, *10*, 366. [[CrossRef](#)] [[PubMed](#)]
25. Ruffenach, G.; Medzikovic, L.; Sun, W.; Hong, J.; Eghbali, M. Functions of RNA-binding proteins in cardiovascular disease. *Cells* **2023**, *12*, 2794. [[CrossRef](#)]
26. Völkers, M.; Preiss, T.; Hentze, M.W. RNA-binding proteins in cardiovascular biology and disease: The beat goes on. *Nat. Rev. Cardiol.* **2024**. [[CrossRef](#)]
27. Grosch, M.; Schraft, L.; Chan, A.; Küchenhoff, L.; Rapti, K.; Ferreira, A.M.; Kornienko, J.; Li, S.; Radke, M.H.; Krämer, C.; et al. Striated muscle-specific base editing enables correction of mutations causing dilated cardiomyopathy. *Nat. Commun.* **2023**, *14*, 3714. [[CrossRef](#)]
28. Nishiyama, T.; Zhang, Y.; Cui, M.; Li, H.; Sanchez-Ortiz, E.; McAnally, J.R.; Tan, W.; Kim, J.; Chen, K.; Xu, L.; et al. Precise genomic editing of pathogenic mutations in RBM20 rescues dilated cardiomyopathy. *Sci. Transl. Med.* **2022**, *14*, eade1633. [[CrossRef](#)]
29. Shi, D.L. RNA-binding proteins as critical post-transcriptional regulators of cardiac regeneration. *Int. J. Mol. Sci.* **2023**, *24*, 12004. [[CrossRef](#)]
30. Cornelius, V.A.; Naderi-Meshkin, H.; Kelaini, S.; Margariti, A. RNA-binding proteins: Emerging therapeutics for vascular dysfunction. *Cells* **2022**, *11*, 2494. [[CrossRef](#)]
31. Upadhyay, S.K.; Mackereth, C.D. Structural basis of UCUU RNA motif recognition by splicing factor RBM20. *Nucleic Acids Res.* **2020**, *48*, 4538–4550. [[CrossRef](#)] [[PubMed](#)]
32. Brauch, K.M.; Karst, M.L.; Herron, K.J.; de Andrade, M.; Pellikka, P.A.; Rodeheffer, R.J.; Michels, V.V.; Olson, T.M. Mutations in ribonucleic acid binding protein gene cause familial dilated cardiomyopathy. *J. Am. Coll. Cardiol.* **2009**, *54*, 930–941. [[CrossRef](#)] [[PubMed](#)]
33. Watanabe, T.; Kimura, A.; Kuroyanagi, H. Alternative splicing regulator RBM20 and cardiomyopathy. *Front. Mol. Biosci.* **2018**, *5*, 105. [[CrossRef](#)] [[PubMed](#)]
34. Koelemen, J.; Gotthardt, M.; Steinmetz, L.M.; Meder, B. RBM20-related cardiomyopathy: Current understanding and future options. *J. Clin. Med.* **2021**, *10*, 4101. [[CrossRef](#)] [[PubMed](#)]
35. Lennermann, D.; Backs, J.; van den Hoogenhof, M.M.G. New insights in RBM20 cardiomyopathy. *Curr. Heart Fail. Rep.* **2020**, *17*, 234–246. [[CrossRef](#)] [[PubMed](#)]
36. Eberl, H.; Rebs, S.; Hoppe, S.; Sedaghat-Hamedani, F.; Kayvanpour, E.; Meder, B.; Streckfuss-Bömeke, K. Generation of an RBM20-mutation-associated left-ventricular non-compaction cardiomyopathy iPSC line (UMGi255-A) into a DCM genetic background to investigate monogenetic cardiomyopathies. *Stem Cell Res.* **2024**, *74*, 103290. [[CrossRef](#)] [[PubMed](#)]
37. Ihara, K.; Sasano, T.; Hiraoka, Y.; Togo-Ohno, M.; Soejima, Y.; Sawabe, M.; Tsuchiya, M.; Ogawa, H.; Furukawa, T.; Kuroyanagi, H. A missense mutation in the RSRSP stretch of Rbm20 causes dilated cardiomyopathy and atrial fibrillation in mice. *Sci. Rep.* **2020**, *10*, 17894. [[CrossRef](#)] [[PubMed](#)]
38. Schneider, J.W.; Oommen, S.; Qureshi, M.Y.; Goetsch, S.C.; Pease, D.R.; Sundsbak, R.S.; Guo, W.; Sun, M.; Sun, H.; Kuroyanagi, H.; et al. Dysregulated ribonucleoprotein granules promote cardiomyopathy in RBM20 gene-edited pigs. *Nat. Med.* **2020**, *26*, 1788–1800. [[CrossRef](#)]
39. Wang, C.; Zhang, Y.; Methawasin, M.; Braz, C.U.; Gao-Hu, J.; Yang, B.; Strom, J.; Gohlke, J.; Hacker, T.; Khatib, H.; et al. RBM20^{S639G} mutation is a high genetic risk factor for premature death through RNA-protein condensates. *J. Mol. Cell. Cardiol.* **2022**, *165*, 115–129. [[CrossRef](#)]
40. Kornienko, J.; Rodríguez-Martínez, M.; Fenzl, K.; Hinze, F.; Schraivogel, D.; Grosch, M.; Tunaj, B.; Lindenhofer, D.; Schraft, L.; Kueblbeck, M.; et al. Mislocalization of pathogenic RBM20 variants in dilated cardiomyopathy is caused by loss-of-interaction with Transportin-3. *Nat. Commun.* **2023**, *14*, 4312. [[CrossRef](#)]
41. Zhang, Y.; Gregorich, Z.R.; Wang, Y.; Braz, C.U.; Zhang, J.; Liu, Y.; Liu, P.; Shen, J.; Aori, N.; Hacker, T.A.; et al. Disruption of the nuclear localization signal in RBM20 is causative in dilated cardiomyopathy. *JCI Insight* **2023**, *8*, e170001. [[CrossRef](#)] [[PubMed](#)]
42. van den Hoogenhof, M.M.G.; Beqqali, A.; Amin, A.S.; van der Made, I.; Aufiero, S.; Khan, M.A.F.; Schumacher, C.A.; Jansweijer, J.A.; van Spaendonck-Zwarts, K.Y.; Remme, C.A.; et al. RBM20 mutations induce an arrhythmogenic dilated cardiomyopathy related to disturbed calcium handling. *Circulation* **2018**, *138*, 1330–1342. [[CrossRef](#)] [[PubMed](#)]
43. Gaertner, A.; Klauke, B.; Felski, E.; Kassner, A.; Brodehl, A.; Gerdes, D.; Stanasiuk, C.; Ebbinghaus, H.; Schulz, U.; Dubowy, K.O.; et al. Cardiomyopathy-associated mutations in the RS domain affect nuclear localization of RBM20. *Hum. Mutat.* **2020**, *41*, 1931–1943. [[CrossRef](#)] [[PubMed](#)]

44. Murayama, R.; Kimura-Asami, M.; Togo-Ohno, M.; Yamasaki-Kato, Y.; Naruse, T.K.; Yamamoto, T.; Hayashi, T.; Ai, T.; Spoonamore, K.G.; Kovacs, R.J.; et al. Phosphorylation of the RSRSP stretch is critical for splicing regulation by RNA-Binding Motif Protein 20 (RBM20) through nuclear localization. *Sci. Rep.* **2018**, *8*, 8970. [[CrossRef](#)] [[PubMed](#)]
45. Fenix, A.M.; Miyaoka, Y.; Bertero, A.; Blue, S.M.; Spindler, M.J.; Tan, K.K.B.; Perez-Bermejo, J.A.; Chan, A.H.; Mayerl, S.J.; Nguyen, T.D.; et al. Gain-of-function cardiomyopathic mutations in RBM20 rewire splicing regulation and re-distribute ribonucleoprotein granules within processing bodies. *Nat. Commun.* **2021**, *12*, 6324. [[CrossRef](#)]
46. Sedaghat-Hamedani, F.; Haas, J.; Zhu, F.; Geier, C.; Kayvanpour, E.; Liss, M.; Lai, A.; Frese, K.; Pribe-Wolferts, R.; Amr, A.; et al. Clinical genetics and outcome of left ventricular non-compaction cardiomyopathy. *Eur. Heart J.* **2017**, *38*, 3449–3460. [[CrossRef](#)] [[PubMed](#)]
47. Inagaki, N.; Hayashi, T.; Takei, Y.; Kosuge, H.; Suzuki, S.; Tanimoto, K.; Chikamori, T.; Kimura, A. Pathogenic variant of RBM20 in a multiplex family with hypertrophic cardiomyopathy. *Hum. Genome Var.* **2022**, *9*, 6. [[CrossRef](#)]
48. Guo, W.; Bharmal, S.J.; Esbona, K.; Greaser, M.L. Titin diversity—alternative splicing gone wild. *J. Biomed. Biotechnol.* **2010**, *2010*, 753675. [[CrossRef](#)]
49. Tharp, C.A.; Haywood, M.E.; Sbaizero, O.; Taylor, M.R.G.; Mestroni, L. The giant protein Titin’s role in cardiomyopathy: Genetic, transcriptional, and post-translational modifications of TTN and their contribution to cardiac disease. *Front. Physiol.* **2019**, *10*, 1436. [[CrossRef](#)]
50. Neagoe, C.; Opitz, C.A.; Makarenko, I.; Linke, W.A. Gigantic variety: Expression patterns of titin isoforms in striated muscles and consequences for myofibrillar passive stiffness. *J. Muscle Res. Cell Motil.* **2003**, *24*, 175–189. [[CrossRef](#)]
51. Li, S.; Guo, W.; Dewey, C.N.; Greaser, M.L. Rbm20 regulates titin alternative splicing as a splicing repressor. *Nucleic Acids Res.* **2013**, *41*, 2659–2672. [[CrossRef](#)]
52. Maatz, H.; Jens, M.; Liss, M.; Schafer, S.; Heinig, M.; Kirchner, M.; Adami, E.; Rintisch, C.; Dauksaitė, V.; Radke, M.H.; et al. RNA-binding protein RBM20 represses splicing to orchestrate cardiac pre-mRNA processing. *J. Clin. Investig.* **2014**, *124*, 3419–3430. [[CrossRef](#)] [[PubMed](#)]
53. Dai, J.; Li, Z.; Huang, W.; Chen, P.; Sun, Y.; Wang, H.; Wu, D.; Chen, Y.; Li, C.; Xiao, L.; et al. RBM20 Is a candidate gene for hypertrophic cardiomyopathy. *Can. J. Cardiol.* **2021**, *37*, 1751–1759. [[CrossRef](#)]
54. Grifone, R.; Shao, M.; Saquet, A.; Shi, D.L. RNA-binding protein Rbm24 as a multifaceted post-transcriptional regulator of embryonic lineage differentiation and cellular homeostasis. *Cells* **2020**, *9*, 1891. [[CrossRef](#)] [[PubMed](#)]
55. Ray, D.; Kazan, H.; Chan, E.T.; Peña-Castillo, L.; Chaudhry, S.; Talukder, S.; Blencowe, B.J.; Morris, Q.; Hughes, T.R. Rapid and systematic analysis of the RNA recognition specificities of RNA-binding proteins. *Nat. Biotechnol.* **2009**, *27*, 667–670. [[CrossRef](#)] [[PubMed](#)]
56. Fetka, I.; Radeghieri, A.; Bouwmeester, T. Expression of the RNA recognition motif-containing protein SEB-4 during *Xenopus* embryonic development. *Mech. Dev.* **2000**, *94*, 283–286. [[CrossRef](#)] [[PubMed](#)]
57. Grifone, R.; Xie, X.; Bourgeois, A.; Saquet, A.; Duprez, D.; Shi, D.L. The RNA-binding protein Rbm24 is transiently expressed in myoblasts and is required for myogenic differentiation during vertebrate development. *Mech. Dev.* **2014**, *134*, 1–15. [[CrossRef](#)]
58. Maragh, S.; Miller, R.A.; Bessling, S.L.; McGaughey, D.M.; Wessels, M.W.; de Graaf, B.; Stone, E.A.; Bertoli-Avella, A.M.; Gearhart, J.D.; Fisher, S.; et al. Identification of RNA binding motif proteins essential for cardiovascular development. *BMC Dev. Biol.* **2011**, *11*, 62. [[CrossRef](#)]
59. Miller, R.A.; Christoforou, N.; Pevsner, J.; McCallion, A.S.; Gearhart, J.D. Efficient array-based identification of novel cardiac genes through differentiation of mouse ESCs. *PLoS ONE.* **2008**, *3*, e2176. [[CrossRef](#)]
60. Poon, K.L.; Tan, K.T.; Wei, Y.Y.; Ng, C.P.; Colman, A.; Korzh, V.; Xu, X.Q. RNA-binding protein RBM24 is required for sarcomere assembly and heart contractility. *Cardiovasc. Res.* **2012**, *94*, 418–427. [[CrossRef](#)]
61. Zhang, M.; Zhang, Y.; Xu, E.; Mohibi, S.; De Anda, D.M.; Jiang, Y.; Zhang, J.; Chen, X. Rbm24, a target of p53, is necessary for proper expression of p53 and heart development. *Cell Death Differ.* **2018**, *25*, 1118–1130. [[CrossRef](#)] [[PubMed](#)]
62. Shao, M.; Lu, T.; Zhang, C.; Zhang, Y.Z.; Kong, S.H.; Shi, D.L. Rbm24 controls poly(A) tail length and translation efficiency of crystallin mRNAs in the lens via cytoplasmic polyadenylation. *Proc. Natl. Acad. Sci. USA* **2020**, *117*, 7245–7254. [[CrossRef](#)] [[PubMed](#)]
63. Yang, J.; Hung, L.H.; Licht, T.; Kostin, S.; Looso, M.; Khrameeva, E.E.; Bindereif, A.; Schneider, A.; Braun, T. RBM24 Is a major regulator of muscle-specific alternative splicing. *Dev. Cell.* **2014**, *31*, 87–99. [[CrossRef](#)] [[PubMed](#)]
64. Liu, J.; Kong, X.; Zhang, M.; Yang, X.; Xu, X.Q. RNA binding protein 24 deletion disrupts global alternative splicing and causes dilated cardiomyopathy. *Protein Cell.* **2019**, *10*, 405–416. [[CrossRef](#)] [[PubMed](#)]
65. Lu, S.H.; Lee, K.Z.; Hsu, P.W.; Su, L.Y.; Yeh, Y.C.; Pan, C.Y.; Tsai, S.Y. Alternative splicing mediated by RNA-binding protein RBM24 facilitates cardiac myofibrillogenesis in a differentiation stage-specific manner. *Circ. Res.* **2022**, *130*, 112–129. [[CrossRef](#)] [[PubMed](#)]
66. Liu, J.; Wang, K.; Liu, X.; Pan, L.; Zhou, W.; Huang, J.; Liu, H.; Su, Z.; Xu, X.Q. RBM24 controls cardiac QT interval through CaMKII δ splicing. *Cell. Mol. Life Sci.* **2022**, *79*, 613. [[CrossRef](#)] [[PubMed](#)]
67. Grifone, R.; Saquet, A.; Desgres, M.; Sangiorgi, C.; Gargano, C.; Li, Z.; Coletti, D.; Shi, D.L. Rbm24 displays dynamic functions required for myogenic differentiation during muscle regeneration. *Sci. Rep.* **2021**, *11*, 9423. [[CrossRef](#)]
68. Akerberg, A.A.; Burns, C.E.; Burns, C.G. Exploring the activities of RBPMS proteins in myocardial biology. *Pediatr. Cardiol.* **2019**, *40*, 1410–1418. [[CrossRef](#)]
69. Soufari, H.; Mackereth, C.D. Conserved binding of GCAC motifs by MEC-8, couch potato, and the RBPMS protein family. *RNA.* **2017**, *23*, 308–316. [[CrossRef](#)]

70. Gan, P.; Wang, Z.; Morales, M.G.; Zhang, Y.; Bassel-Duby, R.; Liu, N.; Olson, E.N. RBPMS is an RNA-binding protein that mediates cardiomyocyte binucleation and cardiovascular development. *Dev. Cell.* **2022**, *57*, 959–973.e7. [[CrossRef](#)]
71. Gan, P.; Wang, Z.; Bezprozvannaya, S.; McAnally, J.R.; Tan, W.; Li, H.; Bassel-Duby, R.; Liu, N.; Olson, E.N. RBPMS regulates cardiomyocyte contraction and cardiac function through RNA alternative splicing. *Cardiovasc. Res.* **2024**, *120*, 56–68. [[CrossRef](#)] [[PubMed](#)]
72. Akerberg, A.A.; Trembley, M.; Butty, V.; Schwertner, A.; Zhao, L.; Beerens, M.; Liu, X.; Mahamdeh, M.; Yuan, S.; Boyer, L.; et al. RBPMS2 Is a myocardial-enriched splicing regulator required for cardiac function. *Circ. Res.* **2022**, *131*, 980–1000. [[CrossRef](#)] [[PubMed](#)]
73. Tudurachi, B.S.; Zăvoi, A.; Leonte, A.; Țăpoi, L.; Ureche, C.; Birgoan, S.G.; Chiuariu, T.; Anghel, L.; Radu, R.; Sascău, R.A.; et al. An update on MYBPC3 gene mutation in hypertrophic cardiomyopathy. *Int. J. Mol. Sci.* **2023**, *24*, 10510. [[CrossRef](#)] [[PubMed](#)]
74. Auxerre-Plantié, E.; Nielsen, T.; Grunert, M.; Olejniczak, O.; Perrot, A.; Özcelik, C.; Harries, D.; Matinmehr, F.; Dos Remedios, C.; Mühlfeld, C.; et al. Identification of MYOM2 as a candidate gene in hypertrophic cardiomyopathy and Tetralogy of Fallot, and its functional evaluation in the *Drosophila* heart. *Dis. Model Mech.* **2020**, *13*, dmm045377. [[CrossRef](#)] [[PubMed](#)]
75. Conboy, J.G. Developmental regulation of RNA processing by Rbfox proteins. *Wiley Interdiscip. Rev. RNA* **2017**, *8*, e1398. [[CrossRef](#)] [[PubMed](#)]
76. Gao, C.; Ren, S.; Lee, J.H.; Qiu, J.; Chapski, D.J.; Rau, C.D.; Zhou, Y.; Abdellatif, M.; Nakano, A.; Vondriská, T.M.; et al. RBFox1-mediated RNA splicing regulates cardiac hypertrophy and heart failure. *J. Clin. Investig.* **2016**, *126*, 195–206. [[CrossRef](#)] [[PubMed](#)]
77. Huang, J.; Lee, J.Z.; Rau, C.D.; Pezhouman, A.; Yokota, T.; Miwa, H.; Feldman, M.; Kong, T.K.; Yang, Z.; Tay, W.T.; et al. Regulation of postnatal cardiomyocyte maturation by an RNA splicing regulator RBFox1. *Circulation* **2023**, *148*, 1263–1266. [[CrossRef](#)] [[PubMed](#)]
78. Nutter, C.A.; Jaworski, E.A.; Verma, S.K.; Deshmukh, V.; Wang, Q.; Botvinnik, O.B.; Lozano, M.J.; Abass, I.J.; Ijaz, T.; Brasier, A.R.; et al. Dysregulation of RBFOX2 Is an early event in cardiac pathogenesis of diabetes. *Cell Rep.* **2016**, *15*, 2200–2213. [[CrossRef](#)]
79. Damianov, A.; Black, D.L. Autoregulation of Fox protein expression to produce dominant negative splicing factors. *RNA* **2010**, *16*, 405–416. [[CrossRef](#)]
80. Glessner, J.T.; Bick, A.G.; Ito, K.; Homsy, J.; Rodriguez-Murillo, L.; Fromer, M.; Mazaika, E.; Vardarajan, B.; Italia, M.; Leipzig, J.; et al. Increased frequency of de novo copy number variants in congenital heart disease by integrative analysis of single nucleotide polymorphism array and exome sequence data. *Circ. Res.* **2014**, *115*, 884–896. [[CrossRef](#)]
81. Homsy, J.; Zaidi, S.; Shen, Y.; Ware, J.S.; Samocha, K.E.; Karczewski, K.J.; DePalma, S.R.; McKean, D.; Wakimoto, H.; Gorham, J.; et al. De novo mutations in congenital heart disease with neurodevelopmental and other congenital anomalies. *Science* **2015**, *350*, 1262–1266. [[CrossRef](#)] [[PubMed](#)]
82. McKean, D.M.; Homsy, J.; Wakimoto, H.; Patel, N.; Gorham, J.; DePalma, S.R.; Ware, J.S.; Zaidi, S.; Ma, W.; Patel, N.; et al. Loss of RNA expression and allele-specific expression associated with congenital heart disease. *Nat. Commun.* **2016**, *7*, 12824. [[CrossRef](#)] [[PubMed](#)]
83. Verma, S.K.; Deshmukh, V.; Nutter, C.A.; Jaworski, E.; Jin, W.; Wadhwa, L.; Abata, J.; Ricci, M.; Lincoln, J.; Martin, J.F.; et al. Rbfox2 function in RNA metabolism is impaired in hypoplastic left heart syndrome patient hearts. *Sci. Rep.* **2016**, *6*, 30896. [[CrossRef](#)] [[PubMed](#)]
84. Ying, Y.; Wang, X.J.; Vuong, C.K.; Lin, C.H.; Damianov, A.; Black, D.L. Splicing activation by Rbfox requires self-aggregation through its tyrosine-rich domain. *Cell* **2017**, *170*, 312–323.e10. [[CrossRef](#)]
85. Wei, C.; Qiu, J.; Zhou, Y.; Xue, Y.; Hu, J.; Ouyang, K.; Banerjee, I.; Zhang, C.; Chen, B.; Li, H.; et al. Repression of the central splicing regulator RBFox2 is functionally linked to pressure overload-induced heart failure. *Cell Rep.* **2015**, *10*, 1521–1533. [[CrossRef](#)] [[PubMed](#)]
86. Verma, S.K.; Deshmukh, V.; Thatcher, K.; Belanger, K.K.; Rhyner, A.M.; Meng, S.; Holcomb, R.J.; Bressan, M.; Martin, J.F.; Cooke, J.P.; et al. RBFOX2 is required for establishing RNA regulatory networks essential for heart development. *Nucleic Acids Res.* **2022**, *50*, 2270–2286. [[CrossRef](#)] [[PubMed](#)]
87. Frese, K.S.; Meder, B.; Keller, A.; Just, S.; Haas, J.; Vogel, B.; Fischer, S.; Backes, C.; Matzas, M.; Köhler, D.; et al. RNA splicing regulated by RBFOX1 is essential for cardiac function in zebrafish. *J. Cell Sci.* **2015**, *128*, 3030–3040. [[CrossRef](#)]
88. Huang, M.; Akerberg, A.A.; Zhang, X.; Yoon, H.; Joshi, S.; Hallinan, C.; Nguyen, C.; Pu, W.T.; Haigis, M.C.; Burns, C.G.; et al. Intrinsic myocardial defects underlie an Rbfox-deficient zebrafish model of hypoplastic left heart syndrome. *Nat. Commun.* **2022**, *13*, 5877. [[CrossRef](#)]
89. Jiang, X.; Liu, B.; Nie, Z.; Duan, L.; Xiong, Q.; Jin, Z.; Yang, C.; Chen, Y. The role of m6A modification in the biological functions and diseases. *Signal Transduct. Target. Ther.* **2021**, *6*, 74. [[CrossRef](#)]
90. Wang, S.; Lv, W.; Li, T.; Zhang, S.; Wang, H.; Li, X.; Wang, L.; Ma, D.; Zang, Y.; Shen, J.; et al. Dynamic regulation and functions of mRNA m6A modification. *Cancer Cell Int.* **2022**, *22*, 48. [[CrossRef](#)]
91. Sikorski, V.; Vento, A.; Kankuri, E.; IHD-EPITRAN Consortium. Emerging roles of the RNA modifications N6-methyladenosine and adenosine-to-inosine in cardiovascular diseases. *Mol. Ther. Nucleic Acids* **2022**, *29*, 426–461. [[CrossRef](#)] [[PubMed](#)]
92. Krumbein, M.; Oberman, F.; Cinnamon, Y.; Golomb, M.; May, D.; Vainer, G.; Belzer, V.; Meir, K.; Fridman, I.; Haybaeck, J.; et al. RNA binding protein IGF2BP2 expression is induced by stress in the heart and mediates dilated cardiomyopathy. *Commun. Biol.* **2023**, *6*, 1229. [[CrossRef](#)] [[PubMed](#)]

93. Gao, S.; Sun, H.; Chen, K.; Gu, X.; Chen, H.; Jiang, L.; Chen, L.; Zhang, S.; Liu, Y.; Shi, D.; et al. Depletion of m(6) A reader protein YTHDC1 induces dilated cardiomyopathy by abnormal splicing of Titin. *J. Cell Mol. Med.* **2021**, *25*, 10879–10891. [[CrossRef](#)] [[PubMed](#)]
94. Wang, S.; Zhang, J.; Wu, X.; Lin, X.; Liu, X.M.; Zhou, J. Differential roles of YTHDF1 and YTHDF3 in embryonic stem cell-derived cardiomyocyte differentiation. *RNA Biol.* **2021**, *18*, 1354–1363. [[CrossRef](#)] [[PubMed](#)]
95. Xu, H.; Wang, Z.; Chen, M.; Zhao, W.; Tao, T.; Ma, L.; Ni, Y.; Li, W. YTHDF2 alleviates cardiac hypertrophy via regulating Myh7 mRNA decoy. *Cell Biosci.* **2021**, *11*, 132. [[CrossRef](#)] [[PubMed](#)]
96. Golubeva, V.A.; Dorn, L.E.; Gilbert, C.J.; Rabolli, C.P.; Das, A.S.; Wanasinghe, V.S.; Veress, R.; Terentyev, D.; Accornero, F. Loss of YTHDF2 alters the expression of m6A-modified Myzap and causes adverse cardiac remodeling. *JACC Basic Transl. Sci.* **2023**, *8*, 1180–1194. [[CrossRef](#)] [[PubMed](#)]
97. Kmietczyk, V.; Oelschläger, J.; Gupta, P.; Varma, E.; Hartl, S.; Furkel, J.; Konstandin, M.; Marx, A.; Loewenthal, Z.; Kamuf-Schenk, V.; et al. Ythdf2 regulates cardiac remodeling through its mRNA target transcripts. *J. Mol. Cell. Cardiol.* **2023**, *181*, 57–66. [[CrossRef](#)]
98. Martino, F.; Varadarajan, N.M.; Perestrelo, A.R.; Hejret, V.; Durikova, H.; Vukic, D.; Horvath, V.; Cavalieri, F.; Caruso, F.; Albihlal, W.S.; et al. The mechanical regulation of RNA binding protein hnRNPC in the failing heart. *Sci. Transl. Med.* **2022**, *14*, eabo5715. [[CrossRef](#)]
99. Montañés-Agudo, P.; Pinto, Y.M.; Creemers, E.E. Splicing factors in the heart: Uncovering shared and unique targets. *J. Mol. Cell. Cardiol.* **2023**, *179*, 72–79. [[CrossRef](#)]
100. Ito, J.; Iijima, M.; Yoshimoto, N.; Niimi, T.; Kuroda, S.; Maturana, A.D. RBM20 and RBM24 cooperatively promote the expression of short enh splice variants. *FEBS Lett.* **2016**, *590*, 2262–2274. [[CrossRef](#)]
101. Lee, K.Y.; Seah, C.; Li, C.; Chen, Y.F.; Chen, C.Y.; Wu, C.I.; Liao, P.C.; Shyu, Y.C.; Olafson, H.R.; McKee, K.K.; et al. Mice lacking MBNL1 and MBNL2 exhibit sudden cardiac death and molecular signatures recapitulating myotonic dystrophy. *Hum. Mol. Genet.* **2022**, *31*, 3144–3160. [[CrossRef](#)] [[PubMed](#)]
102. Montañés-Agudo, P.; Aufiero, S.; Schepers, E.N.; van der Made, I.; Cócera-Ortega, L.; Ernault, A.C.; Richard, S.; Kuster, D.W.D.; Christoffels, V.M.; Pinto, Y.M.; et al. The RNA-binding protein QKI governs a muscle-specific alternative splicing program that shapes the contractile function of cardiomyocytes. *Cardiovasc. Res.* **2023**, *119*, 1161–1174. [[CrossRef](#)] [[PubMed](#)]
103. Ma, H.; Yu, S.; Liu, X.; Zhang, Y.; Fakadej, T.; Liu, Z.; Yin, C.; Shen, W.; Locasale, J.W.; Taylor, J.M.; et al. Lin28a regulates pathological cardiac hypertrophic growth through Pck2-mediated enhancement of anabolic synthesis. *Circulation* **2019**, *139*, 1725–1740. [[CrossRef](#)] [[PubMed](#)]
104. Lin, Y.; Tan, K.T.; Liu, J.; Kong, X.; Huang, Z.; Xu, X.Q. Global profiling of Rbm24 bound RNAs uncovers a multi-tasking RNA binding protein. *Int. J. Biochem. Cell Biol.* **2018**, *94*, 10–21. [[CrossRef](#)]
105. Bartsch, D.; Kalamkar, K.; Ahuja, G.; Lackmann, J.W.; Hescheler, J.; Weber, T.; Bazzi, H.; Clamer, M.; Mendjan, S.; Papantonis, A.; et al. mRNA translational specialization by RBPMS presets the competence for cardiac commitment in hESCs. *Sci. Adv.* **2023**, *9*, eade1792. [[CrossRef](#)] [[PubMed](#)]
106. Cao, J.; Verma, S.K.; Jaworski, E.; Mohan, S.; Nagasawa, C.K.; Rayavara, K.; Sooter, A.; Miller, S.N.; Holcomb, R.J.; Powell, M.J.; et al. RBFOX2 is critical for maintaining alternative polyadenylation patterns and mitochondrial health in rat myoblasts. *Cell Rep.* **2021**, *37*, 109910. [[CrossRef](#)] [[PubMed](#)]
107. Kemmler, C.L.; Riemsdijk, F.W.; Moran, H.R.; Mosimann, C. From stripes to a beating heart: Early cardiac development in zebrafish. *J. Cardiovasc. Dev. Dis.* **2021**, *8*, 17. [[CrossRef](#)]
108. Staudt, D.; Stainier, D. Uncovering the molecular and cellular mechanisms of heart development using the zebrafish. *Annu. Rev. Genet.* **2012**, *46*, 397–418. [[CrossRef](#)]
109. Bakkers, J. Zebrafish as a model to study cardiac development and human cardiac disease. *Cardiovasc. Res.* **2011**, *91*, 279–288. [[CrossRef](#)]
110. González-Rosa, J.M. Zebrafish models of cardiac disease: From fortuitous mutants to precision medicine. *Circ. Res.* **2022**, *130*, 1803–1826. [[CrossRef](#)]
111. Miura, G.I.; Yelon, D. A guide to analysis of cardiac phenotypes in the zebrafish embryo. *Methods Cell Biol.* **2011**, *101*, 161–180. [[CrossRef](#)]

Disclaimer/Publisher’s Note: The statements, opinions and data contained in all publications are solely those of the individual author(s) and contributor(s) and not of MDPI and/or the editor(s). MDPI and/or the editor(s) disclaim responsibility for any injury to people or property resulting from any ideas, methods, instructions or products referred to in the content.