



HAL
open science

No effect of subthalamic deep brain stimulation on metacognition in Parkinson's disease

Carlos Trenado, Matthias Boschheidgen, Karim N'diaye, Alfons Schnitzler,
Luc Mallet, Lars Wojtecki

► **To cite this version:**

Carlos Trenado, Matthias Boschheidgen, Karim N'diaye, Alfons Schnitzler, Luc Mallet, et al.. No effect of subthalamic deep brain stimulation on metacognition in Parkinson's disease. *Scientific Reports*, 2023, 13 (1), pp.10. 10.1038/s41598-022-26980-8 . hal-04542376

HAL Id: hal-04542376

<https://hal.sorbonne-universite.fr/hal-04542376>

Submitted on 11 Apr 2024

HAL is a multi-disciplinary open access archive for the deposit and dissemination of scientific research documents, whether they are published or not. The documents may come from teaching and research institutions in France or abroad, or from public or private research centers.

L'archive ouverte pluridisciplinaire **HAL**, est destinée au dépôt et à la diffusion de documents scientifiques de niveau recherche, publiés ou non, émanant des établissements d'enseignement et de recherche français ou étrangers, des laboratoires publics ou privés.



Distributed under a Creative Commons Attribution 4.0 International License



OPEN

No effect of subthalamic deep brain stimulation on metacognition in Parkinson's disease

Carlos Trenado^{1,2,6}, Matthias Boschheidgen^{1,6}, Karim N'Diaye⁴, Alfons Schnitzler¹, Luc Mallet^{4,5} & Lars Wojtecki^{1,3}✉

Deep brain stimulation of the subthalamic nucleus (STN-DBS) is a powerful treatment in Parkinson's disease (PD), which provides a positive effect on motor symptoms although the way it operates on high cognitive processes such as metacognition remains unclear. To address this issue, we recorded electroencephalogram (EEG) of PD patients treated with STN-DBS that performed a reversal learning (RL) paradigm endowed with metacognitive self-assessment. We considered two stimulation conditions, namely DBS-ON (stimulation on) and DBS-OFF (stimulation off), and focused our EEG-analysis on the frontal brain region due to its involvement on high cognitive processes. We found a trend towards a significant difference in RL ability between stimulation conditions. STN-DBS showed no effect on metacognition, although a significant association between accuracy and decision confidence level held for DBS OFF, but not in the case of DBS ON. In summary, our study revealed no significant effect of STN-DBS on RL or metacognition.

Deep Brain Stimulation (DBS) of the subthalamic nucleus (STN) is a technique for the treatment of neurological and psychiatric disorders such as Parkinson's disease (PD)^{1,2} or obsessive compulsive disorder (OCD)³. Although the effect of DBS on motor symptoms such as bradykinesia, muscle rigor or resting tremor has been extensively addressed⁴, its side effects on cognition remain a field of ongoing research. In general, DBS has been assumed to modulate cortico-striatal circuitries with direct effect on motor functions and indirect effect in cognitive and behavioral abilities^{5,6}.

Reversal learning (RL) tasks have been extensively used to investigate behavioral flexibility and set-shifting in PD patients under levodopa and stimulation therapy⁷⁻¹². RL requires participants to discriminate between two different stimuli with fixed reward contingencies, acquire and apply a strategy. After reaching a specific reversal criterion, contingencies change and subjects have to adapt their strategy and learn the new rule. In particular, an impairment of RL in PD patients has been previously reported¹⁰. With regard to the effect of levodopa, several studies showed an impairment of RL and enhanced reward-seeking-behavior^{8,11,13}. Others investigated RL in PD patients with bilateral STN-DBS three months after surgery and found an improvement of performance in a reversal/extinction task⁹. Focusing on PD's neural mechanism, it has been suggested that basal ganglia-thalamo-cortical-circuits play an important role not only in motor, but also in cognitive and behavioral functions. Specially frontostriatal and orbitofrontal loops seem to be involved in decision-making processes and thus have an influence on performance in reversal learning^{14,15}. In relation to this, Cavanagh et al. showed a speeding up of decision making in high conflict situations¹⁶ and suggested that the STN works as a control of cortico-striatal function, thus enabling accumulation of evidence that leads to a well-considered decision. By focusing on the effect of STN-DBS, it has been reported that PD patients tend to speed up their decision-making thus leading to impulsivity symptoms. On the other hand, some studies reported an improvement in decision-making under risky situations¹⁷.

Metacognition is the process of examining one's own thoughts and opinions which plays a crucial role in learning and decision making¹⁸. Previous studies have emphasized the importance of self-awareness and meta-cognitive skills in PD patients¹⁹⁻²². For instance, a comparative study in PD patients with and without impulse

¹Institute of Clinical Neuroscience and Medical Psychology, Medical Faculty, Heinrich Heine University, Duesseldorf, Germany. ²Max Planck Institute for Empirical Aesthetics, Frankfurt am Main, Germany. ³Department of Neurology and Neurorehabilitation, Hospital Zum Heiligen Geist, Academic Teaching Hospital of the Heinrich-Heine-University Duesseldorf, von-Broichhausen-Allee 1, 47906 Kempen, Germany. ⁴Institut du Cerveau et de la Moelle Epinière, Hôpital Pitié-Salpêtrière, Paris, France. ⁵Department of Mental Health and Psychiatry, Global Health Institute, University of Geneva, Geneva, Switzerland. ⁶These authors contributed equally: Carlos Trenado and Matthias Boschheidgen. ✉email: Lars.Wojtecki@artemed.de

Patient	Sex	BDI	PANAS (+)	PANAS (-)	MDRS	UPDRS DBS-ON	UPDRS DBS-OFF	Disease duration
PAT_1	m	4	35	10	138	38	46	15
PAT_2	m	6	28	11	142	13	30	12
PAT_3	w	9	26	11	142	5	25	12
PAT_4	w	7	45	11	143	15	24	6
PAT_5	m	1	31	11	143	3	10	6
PAT_6	m	14	27	11	142	22	34	6
PAT_7	m	6	31	11	144	6	19	3
PAT_8	m	6	33	10	142	14	38	8
PAT_9	m	10	35	20	136	5	11	9
PAT_10	m	8	28	14	136	17	58	16
PAT_11	m	7	29	14	136	15	26	6
PAT_12	m	6	30	15	133	37	48	13

Table 1. Patient information: sex, mean score of the Beck depression inventory (BDI), mean score of the positive and negative affect schedule (PANAS), mean score of the Mattis dementia rating scale (MDRS), UPDRS scores under effect of stimulation (DBS-ON) and no stimulation (DBS-OFF), disease duration with respect to the date of operation (years).

control disorders (ICD) reported comparable or increased level of self-awareness in the ICD group. The awareness of the inability to resist impulse behaviors in the ICD group was hypothesized as a source of increased depression in PD patients with ICD²⁰. Oh-Lee et al. reported that memory and metacognitive function are not affected in PD patients in a Tip-of-Tongue experiment²¹.

In a previous publication¹⁸, we already utilized a RL paradigm endowed with metacognitive self-assessment to assess behavioral flexibility and metacognition in a group of PD patients and found a non-compromising positive effect of dopaminergic medication on metacognition. Now we present data of a PD cohort undergoing STN-DBS while being assessed with a similar paradigm. Since the STN receives inputs from frontal cortical areas (via the hyperdirect pathway) and such regions have been implicated in behavioral flexibility and metacognition, it is relevant to gain understanding on the prospective effect of STN-DBS on these cognitive processes and its neurophysiological manifestation. We expected speeding up of decision-making in trials with low confidence rating due to STN-DBS with an effect on metacognitive processes.

Methods

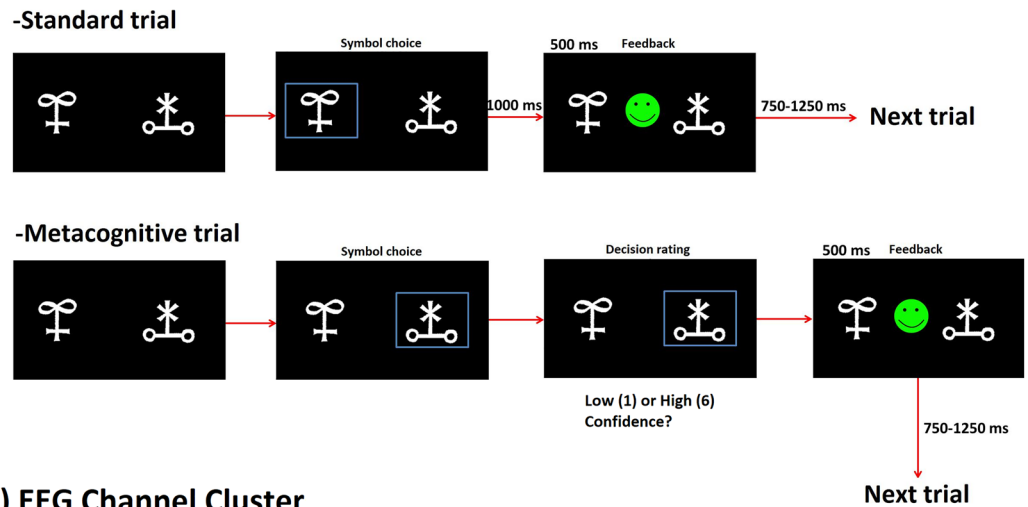
Patients. Fourteen PD patients with at least three months since the time of STN-DBS implantation were recruited from the movement disorders unit of the University Hospital Düsseldorf, although only twelve patients (2 female and 10 male) were able to complete the study. The sample size was based on our previous metacognition study in PD¹⁸ that showed effects on a reversal learning task by including 10 PD patients. All Patients had no previous experience with a RL task. Dementia and major depression were ruled out based on psychological assessment (all patients had a score > 132 on the Mattis Dementia Rating Scale (MDRS) and < 18 on the Beck Depression Inventory (BDI)^{23,24}. Furthermore, patients did not suffer from any other psychological disease or movement disorder. Table 1 provides patient's demographic information, stimulation settings, disease duration, psychological scores. The present study was in agreement with the Helsinki Declaration and approved by the ethics committee of the University Hospital Düsseldorf (Study Nr. 3209). Patients that participated in the study signed an informed consent form.

Study design. The day before the test, patients received information about the study, signed an informed consent form for participation and performed the neuropsychological tests. On the same day, patients suspended their daily anti-parkinsonian medication. The next day, participants received instructions about how to perform the RL task. Subsequently, we performed EEG preparation steps, including cap appropriate placement and control of electrode impedances. With regard to DBS, two experimental conditions were considered in randomized order: DBS-OFF (stimulation off) and DBS-ON (stimulation on). Note that both experimental conditions were performed off medication. The experiment lasted approximately 30 min depending on the performance of participants. Patients that started the experiment with the DBS-ON condition took a break of at least 30 min since the switching off stimulator before the start of the next experimental session to exclude any stimulation effects.

Neuropsychological screening. We assessed depression symptoms with the Beck Depression Inventory (score range: 0–63). A cut-off score above 18 was adopted for clinically relevant depression. We assessed positive (PA) and negative affect (NA) with the PANAS questionnaire²⁵ (score ranges for PA and NA: 10–50). Assessment of Dementia was done with the Mattis Dementia Rating Scale (MDRS) (maximum score: 144) with a cut-off score of 132/144. Table 1 displays neuropsychological scores of patients.

Motor tests. MDS-UPDRS scores were obtained for each patient after each testing condition (See Table 1).

A) Trials of the Reversal Learning Paradigm



B) EEG Channel Cluster

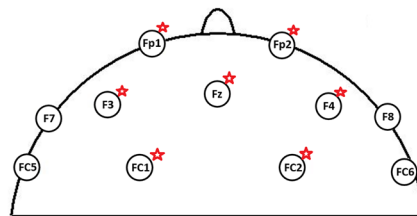


Figure 1. Reversal Learning (RL) Paradigm and EEG Clusters. **(A)** The RL task consisted of trials with and without metacognitive assessment, which we termed as Metacognitive and Standard trials, respectively. The order of trial presentation was randomized. **(B)** Two EEG clusters consisting of channels (FP1, FP2, F3, Fz, F4, FC1, FC2) and (F3, Fz, F4) were considered for further analysis.

Reversal learning task. The RL task utilized in the present study was implemented by using the Psychtoolbox software (<http://psychtoolbox.org/>). Stimuli consisted of pairs of Hiragana characters (Fig. 1 A) displayed on a 19" computer monitor placed 50 cm apart from participants. In each trial, participants selected one of two symbols displayed in the screen by pressing a key on a keyboard. Stimuli remained on the screen until subjects responded. After the response, a happy or sad smiley was displayed for 500 ms to provide participants with feedback. At random trials, participants were asked if they were confident about their response (low confidence corresponds to level 1 and high confidence corresponds to level 6). The inter-trial interval was set up to 500 ms. Contingencies between two symbols were fixed to a rate 80/20, namely the rewarded symbol was followed by positive feedback except in 20% of the trials. Probabilistic error was defined for trials when subjects chose the rewarded symbol and subsequently received negative feedback. The criterion for reversal was as follows: after completion of 8 right out of 10 trials, a reversal was set up to occur with probability 25% for each new trial until reaching the maximum number of 15 right trials. As we used a probabilistic RL task, a correct symbol was not always followed by positive feedback. If participants chose the wrong symbol before reaching the specified number of consecutive right trials, they had to begin again. Participants were asked to change their decision only when they were completely sure that contingencies had changed, taking into consideration that probabilistic error could occur.

Each participant completed between 20 and 30 blocks. Each block consisted of between 11 and 100 trials depending on the patient's interest on the task and clinical state. There was a break after block 10 and 20. After each break, the Hiragana characters in use were replaced by new ones. Probabilistic error could not occur in the first three trials after reversal. Three or less consecutive probabilistic errors were possible during blocks so patients could not follow a specific strategy (e.g. change after second negative feedback).

EEG recording. Electroencephalogram (EEG) (bandpass 0.5–1000 Hz, sampling rate 5000 Hz) was recorded (BrainVision, BrainAmp MR plus, Brain Products GmbH, Munich, Germany) from 32 electrode positions (BrainCap MR, Brain Products GmbH, Munich, Germany) referenced to FCz and with ground at AFz according to the 10–20 system²⁶. Whenever possible, electrode impedances were kept below 5Kohm. EEG events were defined by markers automatically generated by the RL task. In particular, we focused on trials between stimulus presentation and symbol selection, which is the period in which patients experienced more uncertainty in their decision.

Data analysis. *Behavioral data.* With regard to behavior, we considered the following RL parameters: (1) number of trials to reach reversal (TR); (2) number of consecutive errors after reversal (CEAR); (3) percentage of random switch (RS) (trials were patients switched symbols after getting positive feedback); (4) strategy change after probabilistic error (SCAPE) (trials after probabilistic error were patients switched symbols directly). With regard to metacognition, we considered: (5) decision confidence level. With regard to performance, we considered: (6) response time (RT) and (7) accuracy.

Metacognitive data. We focused on the relationship between confidence rating scale and accuracy by statistical tests (Chi-square test). Moreover, metacognition type 2 sensitivity (meta-d), i.e. the efficacy with which observers' confidence ratings discriminated between their own correct and incorrect stimulus classification, was assessed by type 2 signal detection theory (SDT)²⁷.

Statistical analysis. Focusing on RL data, we employed non-parametric tests as our data showed significant deviation from normality as indicated by the Shapiro–Wilk test. In particular, Mann–Whitney U test was utilized for comparisons between independent groups, while comparison between dependent groups was performed by the Wilcoxon signed-rank test.

Effect of stimulation on different RL parameters was addressed by the Friedman test. In order to determine a relationship between categorical variables (confidence rating and accuracy), we made use of the Chi-square test.

Focusing on electrophysiological data, we used repeated measures ANOVA with factors stimulation and confidence level. We performed post hoc tests for dependent and independent sample comparisons. Furthermore, assessment of possible correlates of uncertainty was achieved through one-way ANOVA with the factor security level.

Statistical analyses were performed by using the software IBM SPSS Statistics (Version 24, IBM Software, Business and analytics, Armonk, NY, USA). The significance level for all statistical tests was set up at 0.05.

EEG analysis. EEG data was band pass filtered (0.3–70 Hz) and subsequently notch-filtered (50 Hz) to remove line disturbances. Next, we conducted a manual raw data inspection to eliminate technical artefacts. We eliminated muscle and eye activity as well as DBS disturbances by means of independent component analysis (ICA). A maximum of four ICA components were removed to keep as possible the integrity of the data. Finally, we visually inspected the data to remove any remaining disturbances. Data was segmented based on markers generated by the RL paradigm. We particularly focussed on trials where self-assessment was collected and segments between stimulus presentation and selection of symbol, as decision-making process occurred in this period and uncertainty could be monitored in relation to an electrophysiological correlate. Afterwards, we performed Fast Fourier Transformation (FFT) and power analysis of the EEG signals. Power analysis was extracted from a frontal symmetrical cluster consisting of seven scalp channels (FP1, FP2, F3, Fz, F4, FC1, FC2) (Fig. 1B). Area under the curve (AUC) corresponding to the power curve was calculated for different frequency bands [Delta (1–3 Hz), Theta (4–7 Hz), Alpha (8–12 Hz), Beta (13–30 Hz)]. Z-standardisation was performed to avoid differences due to stimulation effects. Analysis of electrophysiological data was conducted with *Brain Vision Analyzer* (BrainProducts GmbH, München).

Results

Reversal learning parameters. We found a trend towards significant difference in number of trials to reach reversal (TR) between DBS-OFF (15.39 ± 1.12) and DBS-ON (17.62 ± 3.93) as revealed by Wilcoxon-signed-rank-test ($Z = -1.647$; $p = 0.099$) (Fig. 2A). We found a trend towards significant difference in random switch between DBS-OFF (20.08 ± 3.92) and DBS-ON (23.50 ± 6.26) as revealed by Wilcoxon-signed-rank-test ($Z = -1.785$; $p = 0.074$) (Fig. 2C). No significant differences were revealed for other RL parameters (Fig. 2B and D). STN-DBS had no significant effect on RL parameters.

Performance. We found no significant difference in task performance parameters, e.g. reaction time (DBS-OFF 1.06 ± 0.610152604 ; DBS-ON 1.03 ± 0.311) (Fig. 2E) and accuracy (DBS-OFF 0.77 ± 0.019 ; DBS-ON 0.76 ± 0.034) (Fig. 2F) between DBS-ON and DBS-OFF.

Metacognition. Pearson chi-square test revealed a significant relationship between confidence level and accuracy for the DBS-OFF group ($p < 0.05$), which was not held in the case of the DBS-ON group ($p > 0.733$).

We utilized signal detection theory type 2 to assess metacognitive performance. As such, we calculated metacognition type 2 sensitivity (meta-d) and stimulus discrimination sensitivity (d) for each participant. We found a trend towards positive correlation between d and meta-d in the case of DBS-OFF ($r = 0.497$, $p = 0.10$) which did not follow in the case of DBS-ON group ($r = -0.114$, $p = 0.725$). In relation to this, we found a significant association between accuracy and decision confidence level as revealed by the chi-square test for DBS-OFF ($p = 0.04$). Likewise, this association was not present in DBS-ON.

Seven patients outperformed or were in agreement with SDT expectation ($\text{meta-d} = d$) in the DBS-ON group and five patients in the DBS-OFF group (Fig. 3). The mean level of d was 1.664, the mean level of meta-d was 1.524 for DBS-ON. The mean level of d was 1.537, the mean level of meta-d was 1.402 for DBS-OFF. A paired t-test revealed no significant difference between the mean level of meta-d and the mean d for DBS-ON or DBS-OFF.

The mean values of meta-d/d were 0.8936 (Stim-OFF) and 0.9837 (Stim-ON). This means that the average patients exhibited absolute type 2 sensitivity at 89.36% of what would have been expected from their type 1 task

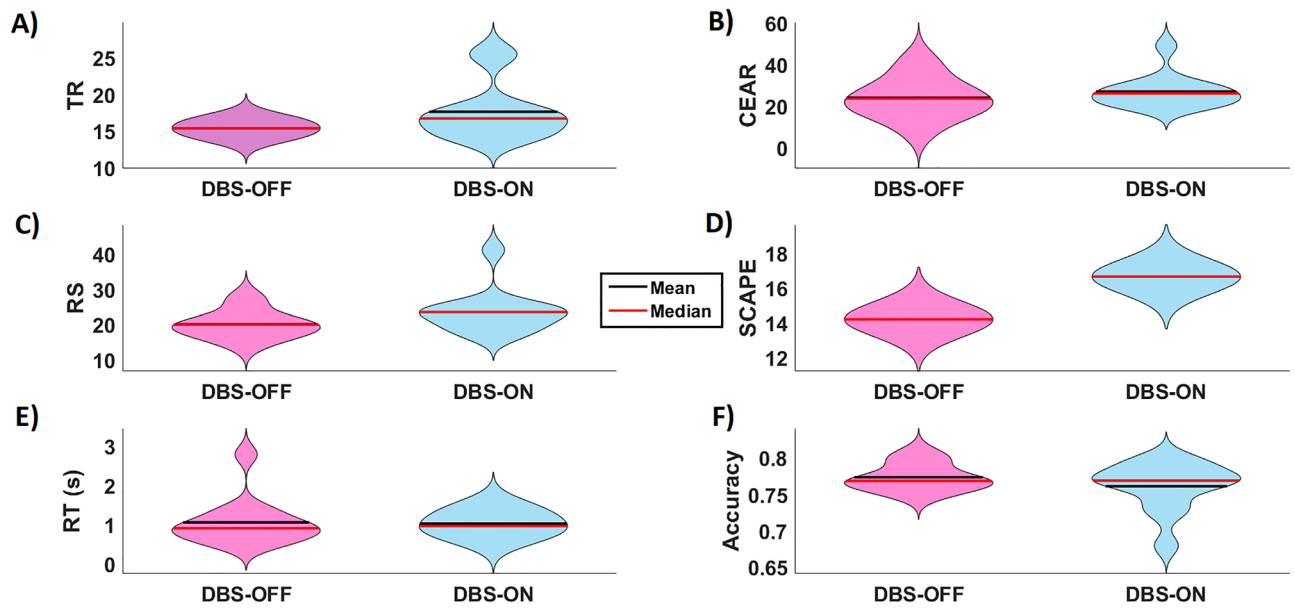


Figure 2. Effect of DBS on reversal Learning (RL) and performance parameters. The violin- type graphs depict the distribution, mean and median of each variable for both stimulation conditions (DBS-OFF and DBS-ON). (A) number of trials to reach reversal (TR); (B) number of consecutive errors after reversal (CEAR); (C) number of random switch (RS) (trials were patients switched symbols after getting positive feedback); (D) strategy change after probabilistic error (SCAPE) (trials after probabilistic error were patients switched symbols directly); (E) response time (RT) and (F) accuracy.

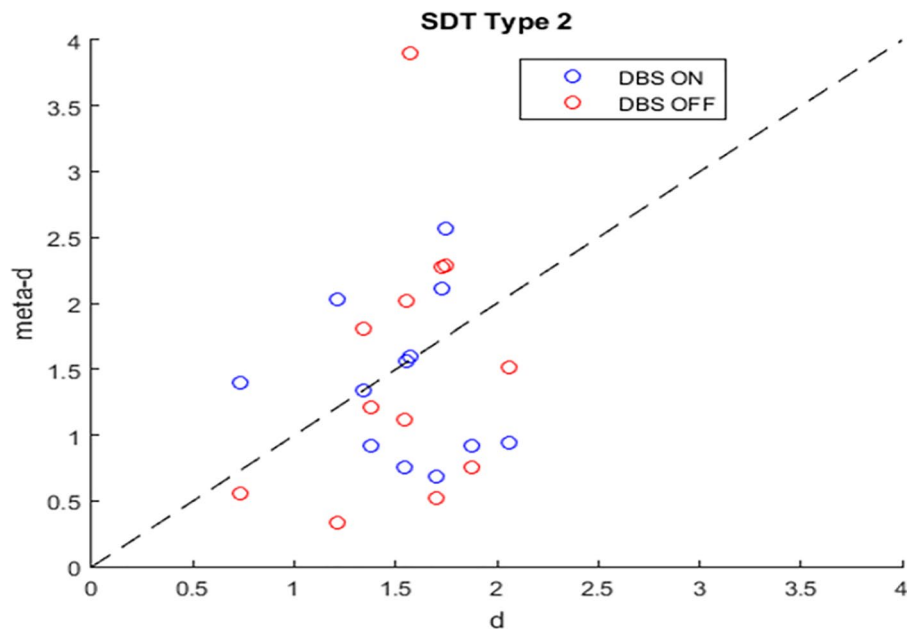


Figure 3. Analysis of relative type 2 sensitivity: meta-d (observed type 2 sensitivity) and d (type 1 sensitivity) for each subject across conditions (DBS-OFF and DBS-ON). We computed such parameters by using the methodology provided by Maniscalco and Lau (2012). Note that if meta-d = d, then a subject is “ideal” from a metacognitive perspective, while the degree to which meta-d is smaller than d reflects the degree to which the subject is inefficient in metacognitive terms.

performance in DBS-OFF. Deep Brain Stimulation improved type 2 sensitivity to a 98.37% of the estimated type 1 performance. The difference was not significant.

Electrophysiological data. *Effect of stimulation.* Repeated measures ANOVA revealed a significant within-subjects effect for the factor stimulation ($p < 0.05$), but no for the factor confidence level ($p > 0.05$). Fig-

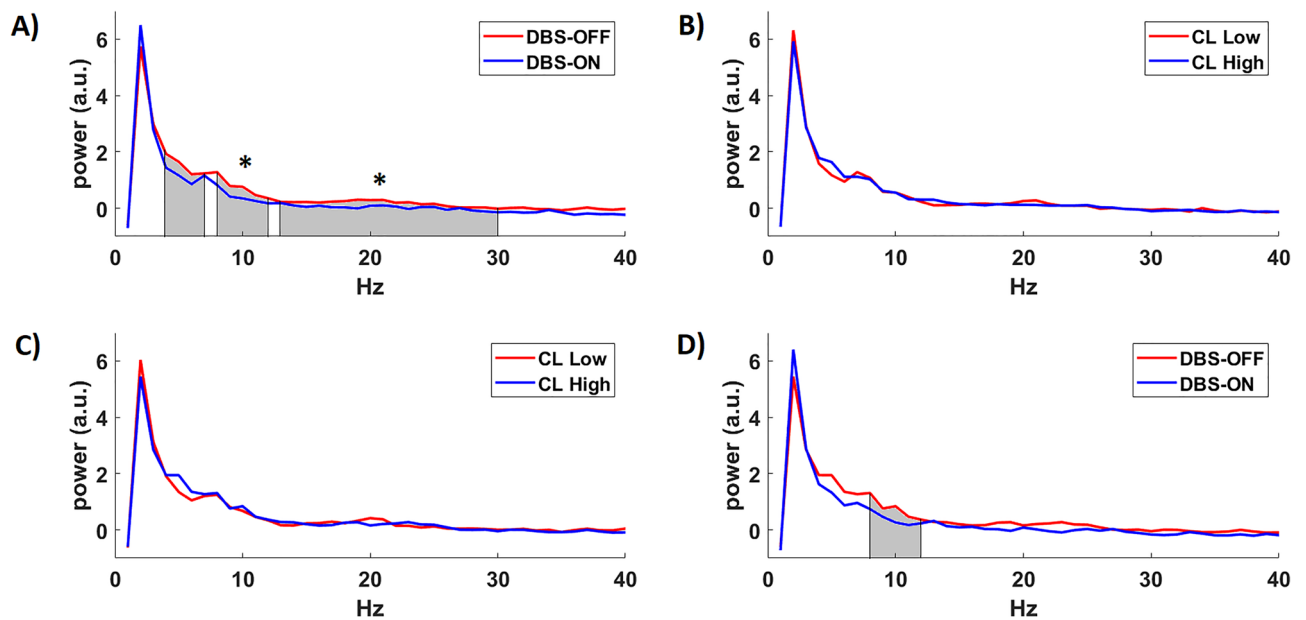


Figure 4. Electrophysiological results. The graphs depict mean power across patients by comparing power of trials corresponding to (A) DBS-OFF and DBS-ON regardless of the confidence level to identify a marker of stimulation, (B) low and high confidence level regardless of stimulation condition to identify a marker of confidence; (C) low and high confidence level under no effect of stimulation and (D) DBS-ON and DBS-OFF by considering a high level of confidence. For the calculation of power, we considered a 7-EEG channel frontal cluster.

ure 4A depicts a significant difference in power between DBS-OFF and DBS ON regardless of the confidence level for α - ($F = 7.208, p = 0.011$) and β -band ($F = 6.615, p = 0.014$) as well as a trend for θ -band ($F = 3.336, p = 0.076$) by using the 7-channel frontal cluster.

Effect on confidence level (CL). We performed a comparison in power between trials corresponding to high and low confidence level regardless of stimulation to identify an electrophysiological marker related to confidence. We found no significant difference in power between confidence levels by using the 7-channel frontal cluster (Fig. 4B).

In order to test a prospective relationship in power between the levels of confidence under no effect of stimulation, we focused on trials in which patients assessed their choice under DBS-OFF. We found no significant difference in confidence by using the 7-channel frontal cluster (Fig. 4C). Likewise, we found no significant differences for the DBS-ON condition.

Comparison between stimulation conditions on trials with high confidence. We compared power between conditions DBS ON and DBS OFF by considering trials with high level of confidence. One-way ANOVA revealed a trend toward significant difference in power between conditions for the α -band ($F = 4.153, p = 0.054$) (see Fig. 4D).

Discussion

To our knowledge, this is the first study that examined reversal learning with endowed metacognitive self-assessment in a group of PD patients treated with STN-DBS. In particular, we assessed metacognitive ability in PD patients, the prospective effect of DBS on such high cognitive function and its neurophysiological manifestation as reflected in electroencephalographic recordings.

In agreement with previous RL studies in rats, we showed a trend towards an impairment in behavioral flexibility due to DBS²⁸. Note that Funkiewicz et al. used a reversal/extinction-task in PD patients treated with DBS and found a significant positive effect of stimulation in the extinction-phase of the experiment⁹. Regarding the effect of STN-DBS on decision making, Frank et al. hypothesized that the STN functions as a stop mechanism in the decision process, which enables reaching an appropriate decision by buying precious time^{15,29}. Consequently, it has been suggested that DBS impairs this important function by leading to a more impulsive behavior in PD patients as similarly shown by other studies^{16,30}. In agreement with this, we found a significant association between accuracy and confidence level for DBS-OFF which did not follow for DBS-ON. Moreover, we found a trend toward significant difference in random switch between both stimulation conditions. A possible explanation for these findings might be a more exploratory and impulsive decision making of PD patients due to STN-DBS.

Our analysis of confidence level showed no effect of DBS on metacognitive assessment. Using signal detection theory type 2, we found no significant difference between d and meta- d for both DBS-ON and DBS-OFF which

leads to the conclusion that for both stimulation conditions, patients assess the same information for both type 1 decision-making and type 2 confidence rating reflecting self-awareness. Therefore, a possible impairment in decision making is not based on lack of self-awareness promoted by STN-DBS.

With regards to decision-making and uncertainty-monitoring the medial prefrontal cortex (mPFC) has been reported to play a major role in conflict situation and processing of evidence (Cavanagh, Frank, Klein, & Allen, 2010). In particular, theta-power (4–8 Hz) indexed significant differences associated to a high conflict situation between healthy controls and PD patients under DBS-OFF, which did not follow in the case of DBS-ON¹⁶. Our data revealed significant differences in power between DBS-OFF and DBS-ON regardless of confidence level, which is consistent with previous studies³² and indicates an effect of stimulation. However, we were not able to identify an electrophysiological marker of metacognitive confidence, as no significant difference in power of trials corresponding to low and high confidence level was revealed.

The electrophysiological data obtained in our study was able to capture the effect of stimulation, although did not show any significant relationship with metacognition and reversal learning parameters. Nevertheless, it would be interesting to explore a possible effect of DBS on the mentioned cognitive processes in relation to brain correlates via combined invasive recordings from deep brain areas such as the STN and non-invasive neurophysiological recordings such as EEG³³. The advantage of this experimental setting would be higher spatial resolution to clarify more directly the role of the STN and its effects in metacognition.

Our study has limitations. First, the considered PD patient cohort is small, which likely prevented us from detecting significant differences in RL and electrophysiological parameters. Note also that testing patients under medication off for the conditions DBS off/on is a challenging task, particularly if patients perform demanding cognitive tasks. Therefore, future multicenter studies should be directed towards increasing patient sample size and statistical power. Second, our cohort of patients is highly inhomogeneous which means that there are differences in character, preferences, demographics, life experiences and intellectual ability, which might have influenced our results.

Data availability

Data of this study are available from the corresponding author upon reasonable request.

Received: 10 October 2022; Accepted: 22 December 2022

Published online: 02 January 2023

References

- Groiss, S. J., Wojtecki, L., Südmeyer, M. & Schnitzler, A. Deep brain stimulation in Parkinson's disease. *Ther. Adv. Neurol. Disord.* **2**, 20–28. <https://doi.org/10.1177/1756285609339382> (2009).
- Okun, M. S. Deep-brain stimulation for Parkinson's disease. *N. Engl. J. Med.* **367**, 1529–1538. <https://doi.org/10.1056/NEJMct1208070> (2012).
- Mallet, L. *et al.* Subthalamic nucleus stimulation in severe obsessive-compulsive disorder. *N. Engl. J. Med.* **359**, 2121–2134. <https://doi.org/10.1056/NEJMoa0708514> (2008).
- Deuschl, G. *et al.* A randomized trial of deep-brain stimulation for Parkinson's disease. *N. Engl. J. Med.* **355**, 896–908. <https://doi.org/10.1056/NEJMoa060281> (2006).
- Da Cunha, C. *et al.* Toward sophisticated basal ganglia neuromodulation: review on basal ganglia deep brain stimulation. *Neurosci. Biobehav. Rev.* **58**, 186–210. <https://doi.org/10.1016/j.neubiorev.2015.02.003> (2015).
- Weintraub, D. B. & Zaghoul, K. A. The role of the subthalamic nucleus in cognition. *Rev. Neurosci.* **24**, 125–138. <https://doi.org/10.1111/j.1460-9568.2008.06148.x> (2013).
- Cools, R. *et al.* Striatal dopamine predicts outcome-specific reversal learning and its sensitivity to dopaminergic drug administration. *J. Neurosci.* **29**, 1538–1543. <https://doi.org/10.1523/JNEUROSCI.4467-08.2009> (2009).
- Cools, R., Lewis, S. J. G., Clark, L., Barker, R. A. & Robbins, T. W. L-DOPA disrupts activity in the nucleus accumbens during reversal learning in Parkinson's disease. *Neuropsychopharmacology* **32**, 180–189. <https://doi.org/10.1038/sj.npp.1301153> (2007).
- Funkiewiez, A. *et al.* Effects of Levodopa and subthalamic nucleus stimulation on cognitive and affective functioning in Parkinson's disease. *Mov. Disord.* **21**, 1656–1662. <https://doi.org/10.1002/mds.21029> (2006).
- Peterson, D. A. *et al.* Probabilistic reversal learning is impaired in Parkinson's disease. *Neuroscience* **163**, 1092–1101. <https://doi.org/10.1016/j.neuroscience.2009.07.033> (2009).
- Graef, S. *et al.* Differential influence of levodopa on reward-based learning in Parkinson's disease. *Front. Hum. Neurosci.* **4**, 169. <https://doi.org/10.3389/fnhum.2010.00169> (2010).
- Trenado, C. *et al.* Assessment of metacognition and reversal learning in Parkinson's disease: Preliminary results. *Front. Hum. Neurosci.* **12**, 343. <https://doi.org/10.3389/fnhum.2018.00343> (2018).
- Cools, R., Altamirano, L. & D'Esposito, M. Reversal learning in Parkinson's disease depends on medication status and outcome valence. *Neuropsychologia* **44**, 1663–1673. <https://doi.org/10.1016/j.neuropsychologia.2006.03.030> (2006).
- Cools, R., Clark, L., Owen, A. M. & Robbins, T. W. Defining the neural mechanisms of probabilistic reversal learning using event-related functional magnetic resonance imaging. *J. Neurosci.* **22**, 4563–4567. <https://doi.org/10.1523/JNEUROSCI.22-11-04563.2002> (2002).
- Frank, M. J., Samanta, J., Moustafa, A. A. & Sherman, S. J. Hold your horses: Impulsivity, deep brain stimulation, and medication in Parkinsonism. *Science* <https://doi.org/10.1126/science.1146157> (2007).
- Cavanagh, J. F. *et al.* Subthalamic nucleus stimulation reverses mediofrontal influence over decision threshold. *Nat. Neurosci.* **14**, 1462–1467. <https://doi.org/10.1038/nn.2925> (2011).
- Boller, J. K. *et al.* Decision-making under risk is improved by both dopaminergic medication and subthalamic stimulation in Parkinson's disease. *Exp. Neurol.* **254**, 70–77. <https://doi.org/10.1016/j.expneurol.2014.01.005> (2014).
- Fleming, S. M., Dolan, R. J. & Frith, C. D. Metacognition: Computation, biology and function. *Philos. Trans. R Soc. Lond. B Biol. Sci.* **367**, 1280–1286. <https://doi.org/10.1098/rstb.2012.0021> (2012).
- Brevers, D., Cleeremans, A. & Bechara, A. Impaired self-awareness in pathological gamblers. *J. Gambl. Stud.* **29**, 119–129. <https://doi.org/10.1007/s10899-012-9292-2> (2013).
- Mack, J. *et al.* The role of self-awareness and cognitive dysfunction in Parkinson's disease with and without impulse-control disorder. *J. Neuropsychiatry Clin. Neurosci.* **25**, 141–149 (2013).
- Oh-lee, J. D., Szymkowicz, S. M., Smith, S. L. & Otani, H. Metacognitive performance, the tip-of-tongue experience, is not disrupted in Parkinsonian patients. *Parkinsons Dis.* <https://doi.org/10.1155/2012/174079> (2012).

22. Pineau, F. *et al.* Executive functioning and risk-taking behavior in Parkinson's disease patients with impulse control disorders. *J. Neural Transm.* **123**, 573–581. <https://doi.org/10.1007/s00702-016-1549-y> (2016).
23. Mattis, S. *Dementia Rating Scale* (Psychological Assessment Resources, Odessa, 1988).
24. Beck, A. T. *Beck Depression Inventory - Manual* (The Psychological Association, San Antonio, 1987).
25. Watson, D., Clark, L. A. & Tellegen, A. Development and validation of brief measures of positive and negative affect: The PANAS scales. *J. Pers. Soc. Psychol.* **54**, 1063–1070. <https://doi.org/10.1037/0022-3514.54.6.1063> (1988).
26. Klem, G. H., Lüders, H. O., Jasper, H. H. & Elger, C. The ten-twenty electrode system of the international federation. *Electroencephalogr. Clin. Neurophysiol. Suppl.* **52**, 3–6 (1999).
27. Maniscalco, B. & Lau, H. Short communication a signal detection theoretic approach for estimating metacognitive sensitivity from confidence ratings. *Conscious. Cogn.* **21**, 422–430. <https://doi.org/10.1016/j.concog.2011.09.021> (2012).
28. Klanker, M., Post, G., Joosten, R., Feenstra, M. & Denys, D. Deep brain stimulation in the lateral orbitofrontal cortex impairs spatial reversal learning. *Behav. Brain Res.* **245**, 7–12. <https://doi.org/10.1016/j.bbr.2013.01.043> (2013).
29. Frank, M. J. Hold your horses: A dynamic computational role for the subthalamic nucleus in decision making. *Neural Netw.* **19**, 1120–1136. <https://doi.org/10.1016/j.neunet.2006.03.006> (2006).
30. Coulthard, E. J. *et al.* Distinct roles of dopamine and subthalamic nucleus in learning and probabilistic decision making. *Brain* **135**, 3721–3734. <https://doi.org/10.1093/brain/aws273> (2012).
31. Cavanagh, J. F., Frank, M. J., Klein, T. J. & Allen, J. J. B. NeuroImage frontal theta links prediction errors to behavioral adaptation in reinforcement learning. *Neuroimage* **49**, 3198–3209. <https://doi.org/10.1016/j.neuroimage.2009.11.080> (2010).
32. Jech, R. *et al.* Deep brain stimulation of the subthalamic nucleus affects resting EEG and visual evoked potentials in Parkinson's disease. *Clin. Neurophysiol.* **117**, 1017–1028. <https://doi.org/10.1016/j.clinph.2006.01.009> (2006).
33. Trenado, C. *et al.* Combined invasive subcortical and non-invasive surface neurophysiological recordings for the assessment of cognitive and emotional functions in humans. *J. Vis. Exp.* **19**, 53466. <https://doi.org/10.3791/53466> (2016).

Acknowledgements

The authors are thankful with all the PD patients that participated in this study. This work was supported by ERA-NET NEURON/BMBF Germany (TYMON; Grant Nr. 01EW1411 to LW). TYMON is a transnational collaborative project: “Uncertainty monitoring vs. inhibition of action in obsessive-compulsive disorder: role of the subthalamic nucleus and effects of stimulation in humans and rodents.” Partners were Luc Mallet, ICM, Paris, France; Rui Costa Champalimaud Center for the Unknown, Lisbon, Portugal; and Lars Wojtecki, University Duesseldorf, Germany.

Author contributions

C.T. data collection; writing first draft; statistical analysis; contribution on methods; review and editing. M.B. data collection; writing first draft; statistical analysis; contribution on methods; review and editing. K.N. design of paradigm; contribution to the methods; review and writing. A.S. review and supervision; L.M. conception; review and editing. L.W. conception; data interpretation; analysis; review and editing; supervision.

Funding

Open Access funding enabled and organized by Projekt DEAL. Lars Wojtecki has previously received funding grants and institutional support from the German Research Foundation, Hilde-Ulrichs-Stiftung für Parkinsonforschung, and the ParkinsonFonds Germany, BMBF/ERA-NETNEURON, DFG Forschergruppe (FOR1328), Deutsche Parkinson Vereinigung (DPV), Forschungskommission, Medizinische Fakultät, HHU Düsseldorf, UCB; Medtronic, UCB, Teva, Allergan, Merz, Abbvie, Roche, Bial, Merck, Novartis, Desitin, Spectrum. Author Lars Wojtecki owned stock in company BioNTech SE. Lars Wojtecki was/is consultant to the following companies: TEVA, UCB Schwarz, Desitin, Medtronic, Abbott/Abbvie, MEDA, Boehringer I, Storz Medical, Kyowa Kirin, Guidepoint, Merck, Merz, Synergia, BIAL, Zambon, Sapio Life, STADA, Inomed, Vertanical.

Competing interests

The authors declare no competing interests.

Additional information

Correspondence and requests for materials should be addressed to L.W.

Reprints and permissions information is available at www.nature.com/reprints.

Publisher's note Springer Nature remains neutral with regard to jurisdictional claims in published maps and institutional affiliations.



Open Access This article is licensed under a Creative Commons Attribution 4.0 International License, which permits use, sharing, adaptation, distribution and reproduction in any medium or format, as long as you give appropriate credit to the original author(s) and the source, provide a link to the Creative Commons licence, and indicate if changes were made. The images or other third party material in this article are included in the article's Creative Commons licence, unless indicated otherwise in a credit line to the material. If material is not included in the article's Creative Commons licence and your intended use is not permitted by statutory regulation or exceeds the permitted use, you will need to obtain permission directly from the copyright holder. To view a copy of this licence, visit <http://creativecommons.org/licenses/by/4.0/>.

© The Author(s) 2023