



HAL
open science

Particulate concentration and seasonal dynamics in the mesopelagic ocean based on the backscattering coefficient measured with Biogeochemical-Argo floats

Antoine Poteau, Emmanuel Boss, Hervé Claustre, Nathan Briggs, Alex Mignot

► To cite this version:

Antoine Poteau, Emmanuel Boss, Hervé Claustre, Nathan Briggs, Alex Mignot. Particulate concentration and seasonal dynamics in the mesopelagic ocean based on the backscattering coefficient measured with Biogeochemical-Argo floats. 2018 Ocean Sciences Meeting, Feb 2018, Portland, Oregon, United States. hal-04549987

HAL Id: hal-04549987

<https://hal.sorbonne-universite.fr/hal-04549987>

Submitted on 17 Apr 2024

HAL is a multi-disciplinary open access archive for the deposit and dissemination of scientific research documents, whether they are published or not. The documents may come from teaching and research institutions in France or abroad, or from public or private research centers.

L'archive ouverte pluridisciplinaire **HAL**, est destinée au dépôt et à la diffusion de documents scientifiques de niveau recherche, publiés ou non, émanant des établissements d'enseignement et de recherche français ou étrangers, des laboratoires publics ou privés.

Analysis of high frequency optical backscattering and Chla fluorescence data obtained from BGC-Argo floats at the base of the mesopelagic zone.

Antoine Poteau¹, Emmanuel Boss², Hervé Claustre¹, Nathan Briggs¹, Alex Mignot¹

1: Sorbonne Universités, UPMC Univ Paris 06, INSU-CNRS, Laboratoire d'Océanographie de Villefranche 2: University of Maine



Besides measuring vertical profiles of optical proxies (Chla fluorescence, backscattering) certain BGC-Argo floats can be configured to record time series of these proxies during the so-called parking depth (generally at 1000m). We present here the first analysis of 5 year of such time series (up to 10 min sampling interval), acquired in various open ocean provinces representative of the diversity of biogeochemical conditions of the global ocean. The main objective is to resolve and identify potential event of **particulate matter export** and to possibly relate them to sub-surface processes. We further evaluate if some more qualitative information (**freshness of the export material**, size proxies) can be resolved from the analysis of those signals.

Source of data : Argo GDAC with expert supervised data control.
Measurements of particulate backscattering coefficients (b_{bp}) at 700nm and Chl_a fluorescence acquired during the parking depth.

- minimum of 24 acquisitions/day/float
- between 900m and 1100m

North Atlantic Subpolar gyre

North Atlantic Subtropical gyre

North polar front, temp[190m] > 2.6°C
South polar front, temp[190m] < 2.6°C

aggregate event : b_{bp} and no Chl_a

aggregate event : b_{bp} and chl_a

median(b_{bp}) + 5(standard deviation of b_{bp})

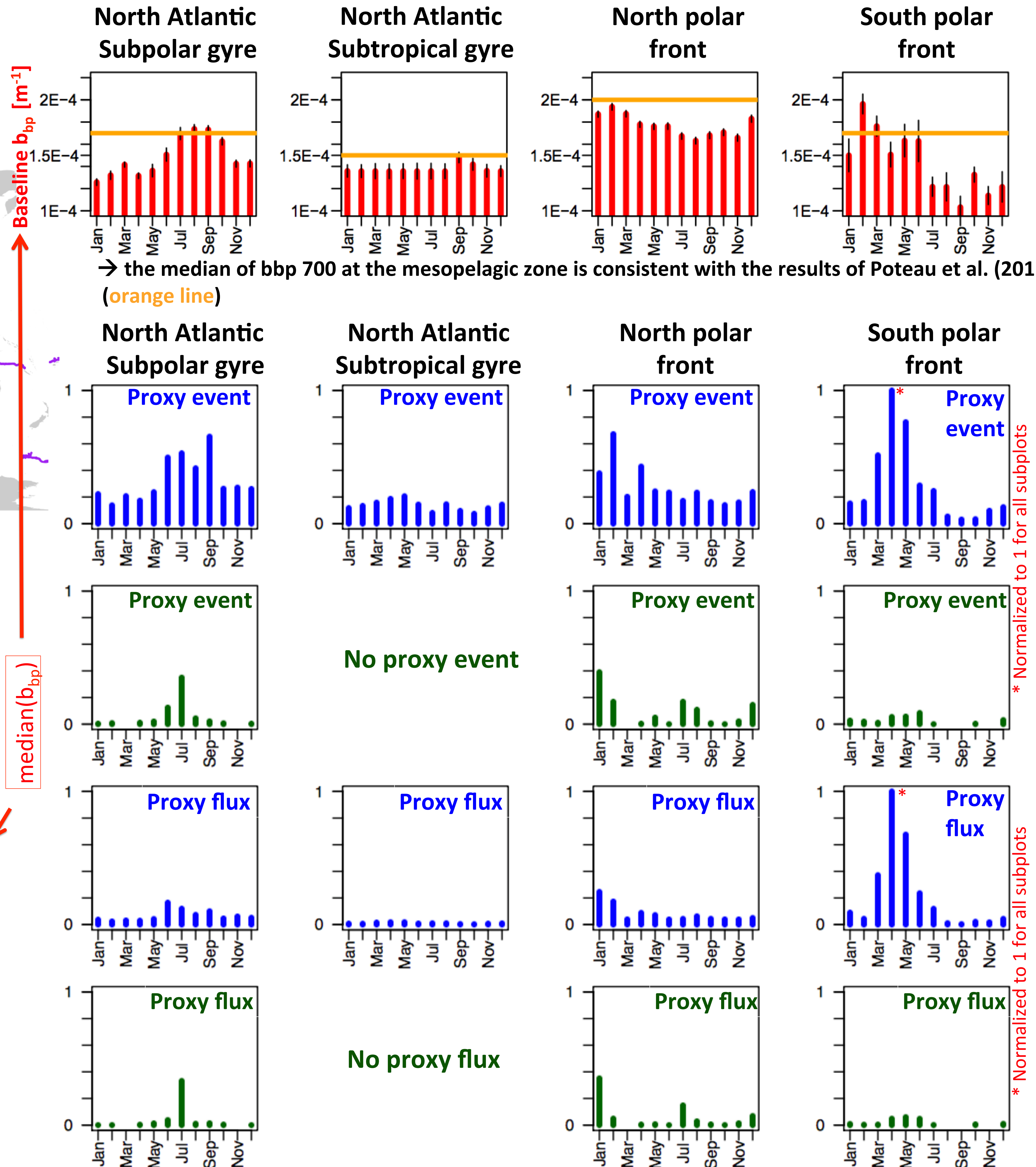
Time

$N = \text{number_event}$ $M = \text{total_acquisitions}$

$$\text{proxy_event} = (\sum N) / M$$

$$\text{prox_flux} = (\sum b_{bp}(N) - \overline{bbp}) / M$$

	North Atl. Subpolar gyre	North Atl. Subtropical gyre	North polar front	South polar front
Number of acquisitions	210373 27582/1693	49939 7675/0	179477 10883/1178	61577 6224/569
Number of days	9980 1260/79	2540 346/0	8542 500/60	2849 281/26
Number of floats	20 19/9	3 2/0	16 14/8	9 6/4



PRELIMINARY ANALYSIS

- **North Atlantic Subtropical gyre**: the lowest values of proxy events and flux.
- **North Atlantic Subpolar gyre and North polar front**: similar trends highest values of proxies recorded during the bloom period.
- **South polar front**: the highest values of proxy events compared to the other areas. the highest values of proxies are delayed by 3 months after the bloom.

The authors would like to acknowledge the support from the remOcean ("remotely-sensed biogeochemical cycles in the Ocean") project funded by the European Research Council (grant 246777) and the NAOS project (grant ANR J11R107-F). These data were collected and made freely available by the International Argo Program and the national programs that contribute to it: (<http://www.argo.ucsd.edu>, <http://argo.jcommops.org>). The Argo Program is part of the Global Ocean Observing System. The authors wish to thank the Argo Data Management team (ADMT) and the BGC Argo Data Management team (BGC ADMT) and in particular Catherine Schmechtig. The authors also acknowledge the valuable comments and suggestions of Henry Bittig.

Reference: Poteau, A., E. Boss, and H. Claustre (2017), Particulate concentration and seasonal dynamics in the mesopelagic ocean based on the backscattering coefficient measured with Biogeochemical-Argo floats, *Geophys. Res. Lett.*, 44, doi:10.1002/2017GL073949.