



HAL
open science

Planning and adjusting the COVID-19 booster vaccination campaign to reduce disease burden

Laura Di Domenico, Yair Goldberg, Vittoria Colizza

► **To cite this version:**

Laura Di Domenico, Yair Goldberg, Vittoria Colizza. Planning and adjusting the COVID-19 booster vaccination campaign to reduce disease burden. *Infectious Disease Modelling*, 2025, 10 (1), pp.150-162. 10.1016/j.idm.2024.09.002 . hal-04731169

HAL Id: hal-04731169

<https://hal.sorbonne-universite.fr/hal-04731169v1>

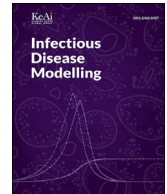
Submitted on 10 Oct 2024

HAL is a multi-disciplinary open access archive for the deposit and dissemination of scientific research documents, whether they are published or not. The documents may come from teaching and research institutions in France or abroad, or from public or private research centers.

L'archive ouverte pluridisciplinaire **HAL**, est destinée au dépôt et à la diffusion de documents scientifiques de niveau recherche, publiés ou non, émanant des établissements d'enseignement et de recherche français ou étrangers, des laboratoires publics ou privés.



Distributed under a Creative Commons Attribution - NonCommercial - NoDerivatives 4.0 International License



Planning and adjusting the COVID-19 booster vaccination campaign to reduce disease burden



Laura Di Domenico ^a, Yair Goldberg ^b, Vittoria Colizza ^{c, d, *}

^a Institute of Social and Preventive Medicine, University of Bern, Bern, Switzerland

^b Faculty of Data and Decisions Science, Technion–Israel Institute of Technology, Haifa, Israel

^c Sorbonne Université, INSERM, Pierre Louis Institute of Epidemiology and Public Health, Paris, France

^d Department of Biology, Georgetown University, WA, District of Columbia, USA

ARTICLE INFO

Article history:

Received 15 April 2024

Received in revised form 3 September 2024

Accepted 10 September 2024

Available online 12 September 2024

Handling Editor: Dr Daihai He

Keywords:

COVID-19

Vaccination strategies

Inter-dose delay

Immunity waning

Age-structured model

ABSTRACT

As public health policies shifted in 2023 from emergency response to long-term COVID-19 disease management, immunization programs started to face the challenge of formulating routine booster campaigns in a still highly uncertain seasonal behavior of the COVID-19 epidemic. Mathematical models assessing past booster campaigns and integrating knowledge on waning of immunity can help better inform current and future vaccination programs. Focusing on the first booster campaign in the 2021/2022 winter in France, we used a multi-strain age-stratified transmission model to assess the effectiveness of the observed booster vaccination in controlling the succession of Delta, Omicron BA.1 and BA.2 waves. We explored counterfactual scenarios altering the eligibility criteria and inter-dose delay. Our study showed that the success of the immunization program in curtailing the Omicron BA.1 and BA.2 waves was largely dependent on the inclusion of adults among the eligible groups, and was highly sensitive to the inter-dose delay, which was changed over time. Shortening or prolonging this delay, even by only one month, would have required substantial social distancing interventions to curtail the hospitalization peak. Also, the time window for adjusting the delay was very short. Our findings highlight the importance of readiness and adaptation in the formulation of routine booster campaign in the current level of epidemiological uncertainty.

© 2024 The Authors. Publishing services by Elsevier B.V. on behalf of KeAi Communications Co. Ltd. This is an open access article under the CC BY-NC-ND license (<http://creativecommons.org/licenses/by-nc-nd/4.0/>).

1. Introduction

As vaccine efficacy wanes over time, one key aspect of the COVID-19 booster vaccination policy is to determine the timing of delivery of the vaccination program to maximize its potential benefits. This is generally informed by several evolving factors: the overall population immunity (Bobrovitz et al., 2023; Jung et al., 2023; Sun et al., 2023), depending on heterogeneous individual history in terms of vaccination, prior infections, and their combined effect, and on its waning level of protection; the characteristics of the circulating variants (Funk et al., 2021; Kahn et al., 2022; Sheikh et al., 2021), especially in terms of disease severity, affected populations, and immune escape; and the expected risk of exposure anticipating an

* Corresponding author. Sorbonne Université, INSERM, Pierre Louis Institute of Epidemiology and Public Health, Paris, France.

E-mail address: vittoria.colizza@inserm.fr (V. Colizza).

Peer review under responsibility of KeAi Communications Co., Ltd.

upcoming epidemic wave. Spacing out vaccination campaigns while maintaining a good level of protection in the population during a surge of cases (Barreiro et al., 2022; Wang et al., 2022) is key to reduce the burden of the disease. However, such planning needs to rely on the above elements, which can hardly be anticipated with accuracy and reliability (WHO, 2023a).

The current epidemiology of COVID-19 remains indeed uncertain, preventing the formulation of routine immunization programs while entering into the first post-pandemic (WHO, 2023b) winter of 2023/2024. Higher viral activity has been registered in the winter season, corresponding to the traditional influenza season. But in 2023, many European countries recommended spring vaccination campaigns for at-risk individuals, in addition to the fall vaccination campaigns coupled with influenza vaccination programs. In April 2023, the European Center for Disease Prevention and Control (ECDC) recommended member countries to prepare for a continued roll-out of COVID-19 vaccines, particularly during the autumn/winter season, targeting vulnerable populations (ECDC, 2023). Despite the lower peaks in hospitalizations and intensive care unit admissions compared to the pandemic period, the 2023/2024 winter currently experiences an important COVID-19 surge in hospitalizations (WHO, 2023d), coupled with influenza and RSV, pressing individuals to wear masks again and authorities to maintain recommendations for vaccination in full season.

Mathematical models of disease transmission can address uncertainty and provide important insights for prevention and control, accounting for the interplay of key evolving factors (Barnard et al., 2022; Bosetti et al., 2022; Di Domenico et al., 2021b; Hogan et al., 2023; Kelly et al., 2022; Massonnaud et al., 2022; Wang et al., 2022). Modeling undertaken at ECDC was used to provide scenarios comparing a fall 2023 vaccination campaign with one coupled with a spring 2023 vaccination campaign, to formulate the recommendations for member countries (ECDC, 2023). However, the emergence of a new variant with higher transmissibility or immune escape properties may significantly change epidemic conditions and hinder the effectiveness of the planned campaign (Barreiro et al., 2022; Bushman et al., 2021; Tzamali et al., 2023), so that rapid response and adjustments may be needed.

Assessing past booster campaigns through modeling can provide insights to inform the formulation of routine COVID-19 vaccination programs. Here, we focus on 2021–2022 winter in France, when the Delta wave followed by the emergence of the Omicron variants challenged the planned booster dosing schedule. We used a COVID-19 multi-strain age-stratified transmission model (Di Domenico et al., 2020; Pullano et al., 2021) based on the observed vaccine uptake, estimates of vaccine effectiveness, waning and hybrid immunity, and variants characteristics to expose the benefits and the limits of planning and adjusting a booster campaign in an evolving epidemic context.

2. Materials and methods

Transmission model. We used a stochastic age-structured two-strain transmission model with vaccination, parameterized using French data on demography (INSEE, 2020), age profile (INSEE, 2020), social contacts (Béraud et al., 2015), mobility (Google, 2020), adoption of preventive measures, and vaccine uptake (Santé publique France, 2020c). We considered four age classes: [0–10], [11–18], [19–64], and 65+ years old, referred as children, adolescents, adults, and seniors respectively. Transmission dynamics follows a compartmental scheme illustrated in Fig. 1 and adopted in previous works (Di Domenico et al., 2020, 2021a, 2021b; Pullano et al., 2021), which accounts for latency period, pre-symptomatic transmission, asymptomatic and symptomatic infections with different degrees of severity, and individuals affected by severe symptoms requiring hospitalization. Model details, parameter values and sources are reported in Table S1 in the Supplementary Information. The model is further stratified by vaccine dose, to build vaccine coverage in the population over time according to data on vaccine doses administered in France (Santé publique France, 2020c) (Fig. 2a), and time since vaccination, to model steps of waning in vaccine effectiveness. The model accounts for possible re-infection with Omicron after a prior Omicron or non-Omicron infection, with possible waning in protection against re-infection. Contact matrices describing mixing among age classes

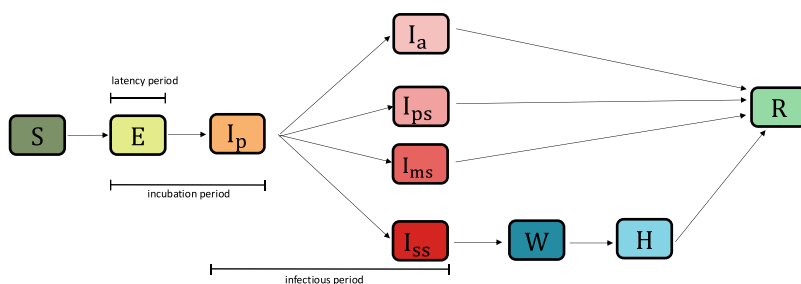


Fig. 1. Compartmental model. Scheme of the compartments of the transmission model. Individuals in E are infected but not infectious, while compartments I_p , I_a , I_{ps} , I_{ms} , I_{ss} can transmit the disease. S = susceptible; E = exposed; I_p = infectious in the prodromic phase (the length of time including E and I_p stages is the incubation period); I_a = asymptomatic infectious; I_{ps} = pauci-symptomatic infectious; I_{ms} = symptomatic infectious with mild symptoms; I_{ss} = symptomatic infectious with severe symptoms; W = severe case waiting to be admitted to hospital; H = severe case admitted to the hospital; R = recovered. The model parameters are described in Table S1. The complete model includes additional layers with analogous compartments to distinguish for age, vaccination status and waning, variant of current and prior infection.

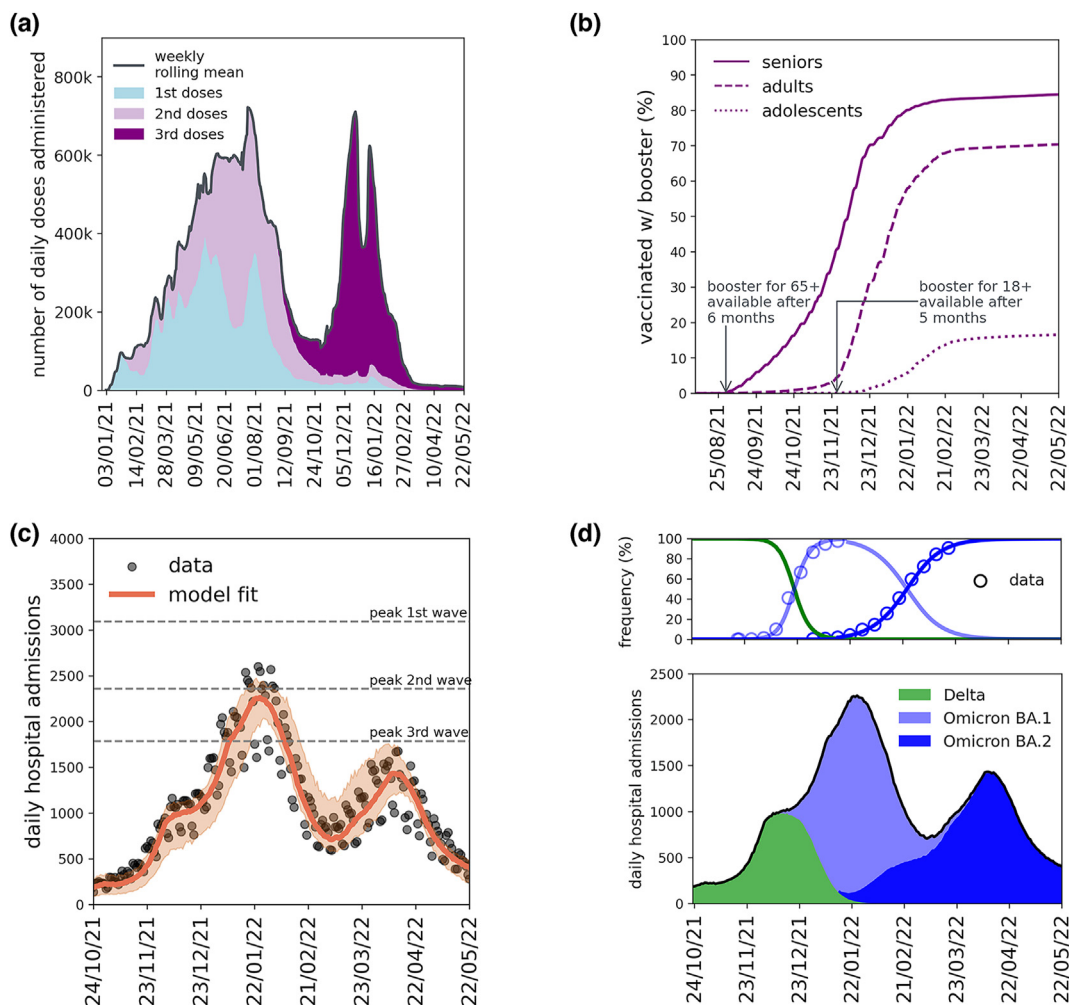


Fig. 2. Vaccination campaign and COVID-19 epidemic activity in France during winter-spring 2021–2022. (a) Number of daily doses administered in metropolitan France since the start of the vaccination campaign, broken down by first, second and third doses. Panel shows a weekly rolling mean to smooth out weekday/weekend patterns. (b) Percentage of individuals who received the 3rd dose (booster) by age class and over time. Line types indicate different age groups, i.e. 65+ (seniors), [19–64] (adults) and [11–18] (adolescents). Arrows indicate relevant dates, i.e. August 31, 2021 when the booster campaign started with eligibility conditioned to 65+ years old and a minimum delay of 6 months since the 2nd dose, and November 27, 2021 when eligibility was extended to individuals with 18+ years and the minimum delay was shortened to 5 months since the 2nd dose. (c) Daily number of hospital admissions due to COVID-19 over time. Dots represent the observed data; continuous line and shaded area indicate the output predicted by the model, respectively the median and 95% probability ranges computed over 100 independent stochastic runs. (d) Prevalence of Delta and Omicron BA.1 and BA.2 in terms of case frequency (top) and estimated related hospital admissions (bottom). Top: variants' frequency simulated in the model (continuous lines) and estimated from sequencing data (dots) provided by EMERGEN (Santé publique France, 2023b). Bottom: trajectory of hospital admissions predicted by the model, broken down by variant.

are parameterized over time to model change in behavior due to interventions (Figs. S3 and S4). Based on pre-pandemic contact data (Béraud et al., 2015), we built synthetic contact matrices by reducing contact rates for specific locations and age classes, according to mobility data related to workplaces (Google, 2020), calendar of school closures (French Ministry of Education, 2020a; 2020b), and survey data on avoidance of physical contacts (Santé publique France, 2020a), as described in previous works (Di Domenico et al., 2021b; Pullano et al., 2021).

SARS-CoV-2 variants. Variant-dependent parameters include the generation time, the transmission advantage and the infection-hospitalization ratio (Section 2 in the Supplementary Information). The model reproduces the co-circulation of two strains, and was applied to describe the Wuhan-Alpha period (February 2020–May 2021), the Alpha-Delta period (June 2021–August 2021), and the Delta-Omicron period (September 2021–May 2022). For the Delta-Omicron period, we modeled the take-over of the sub-lineage BA.2 over BA.1 implicitly by modulating the transmission rate per contact based on the estimated transmission advantage and the proportion of BA.2 over time (Section 6 in the Supplementary Information).

Model calibration. We fitted the model to daily hospital admission data (Santé publique France, 2020b) since the start of the pandemic (February 2020) up to May 22, 2022. All model parameters were informed from available data, except for the transmission rate per contact, the transmission advantage of Omicron BA.1 with respect to the Delta variant, and the

transmission advantage of Omicron BA.2 with respect to Omicron BA.1. We used a maximum likelihood approach to fit a step-wise transmission rate per contact in subsequent time windows, as described in previous works (Di Domenico et al., 2021b; Pullano et al., 2021). Each time window represents a pandemic phase, defined by the interventions implemented (e.g., lockdown, curfew, and other restrictions) and activity of the population (school holidays, summer holidays, etc.). More specifically, prior to the first lockdown and in absence of intervention (February–March 2020), we estimated $\{\beta_{pre-LD}, t_0\}$ where β_{pre-LD} is the transmission rate per contact and t_0 is the date of the start of the simulation. Then, in each phase we estimated α_{phase} , i.e. a scaling factor of the transmission rate per contact specific to the pandemic phase under consideration (e.g., first lockdown, exit from lockdown, summer, start of second wave, second lockdown, etc.). Practically, this means that the transmission rate $\beta(t)$ is time dependent and it is equal to $\beta_{pre-LD} * \alpha_{phase}(t)$. As variant's transmissibility and effect of interventions are explicitly modeled through the transmission advantage, the synthetic contact matrices and the effect of vaccination, the parameter α_{phase} is meant to absorb other factors potentially affecting the transmission, e.g. mask usage or outdoor/indoor activity. The likelihood function is of the form

$$L(Data|\Theta) = \prod_{t=t_1}^{t_n} Poiss(H_{obs}(t) | H_{pred}(t, \Theta))$$

where Θ indicates the set of parameters to be estimated, $H_{obs}(t)$ is the observed number of hospital admissions on day t , $H_{pred}(t, \Theta)$ is the median number of hospital admissions generated by the model on day t using parameter values Θ , $Poiss(\cdot | H_{pred}(t, \Theta))$ is the density of a Poisson distribution with mean $H_{pred}(t, \Theta)$, and $[t_1, t_n]$ is the time window considered for the fit. The parameter space was explored through grid-search and the log-likelihood function was computed to identify the maximum likelihood estimator (MLE). Results of the fit are illustrated in Fig. S5. To estimate the transmission advantage of Omicron BA.1 and BA.2, we used a binomial likelihood function fitting the frequency of Omicron infections predicted by the model to sequencing data from genomic surveillance. We used genomic surveillance data from Flash surveys (Santé publique France, 2022), which weekly sequence a random sample of RT-PCR positive cases, aggregating results at the national level. In the binomial likelihood for Omicron BA.1, for each week we evaluated $P_{binomial}(\cdot | s, f)$ on the number of BA.1 sequences observed in that week, where s is the total number of sequences, and f is the fraction of Omicron BA.1 infections predicted by the model. We fitted a parameter k integrated in the force of infection as $\beta_{Omicron(BA.1)} = \beta_{Delta} * (1+k)$ to model the relative increase in the transmission rate. Analogously, we fitted the transmission advantage of Omicron B.2 with respect to Omicron BA.1, by evaluating $P_{binomial}(\cdot | s, f)$ on the weekly number of observed Omicron BA.2 sequences, where s is the total number of Omicron sequences, and f is the fraction of Omicron BA.2 infections predicted by the model out of all Omicron infections. The maximum likelihood estimates of transmission advantage for Omicron BA.1 and BA.2 are reported in Table S2. Additional details on the inference framework can be found in Section 6 of the Supplementary Information.

Model validation. We validated the model in terms of percentage of antibody-positive population (Section 7 of the Supplementary Information). We modeled the time for seroconversion and seroreversion after infection assuming an exponential distribution with an average of 14 days (Borremans et al., 2020) and 420 days (Peghin et al., 2021) respectively. We compared the estimated fraction of antibody-positive predicted by the model with serological estimates (Le Vu et al., 2021) (Fig. S6). We also validated model trajectories by age group with age-stratified hospital data (Fig. S7).

Infection-induced (natural) immunity. In the pre-Omicron phase (March 2020–August 2021), we considered full protection against re-infection with the same variant or across variants, given the limited number of re-infections observed in France in this time period (Bastard et al., 2022), and the estimated highly reduced risk of re-infections (Pilz et al., 2022). We considered possible re-infection with the Omicron strain, for individuals with a previous Omicron or non-Omicron infection. We did not consider re-infection with a non-Omicron strain after a prior Omicron infection, due to the fast takeover of Omicron sub-lineages over the previous variants. Infection-induced immunity against Omicron infection for individuals with a non-Omicron past infection was set to 62%, following Ref. (Altarawneh et al., 2022c). Individuals with a prior Omicron infection were assumed to have a higher protection against infection with an Omicron sub-lineage, set at 90%, as suggested in Ref. (Chemaitelly et al., 2022). Infection-induced protection against hospitalization was set at 88% in case of a prior non-Omicron infection, following Ref. (Altarawneh et al., 2022c), and assumed to be 95% in case of a prior Omicron infection. Individuals infected twice were assumed to have a reduced infectiousness with respect to a first infection, with a reduction of 50%. We considered waning in infection-induced immunity conferred by non-Omicron infection against Omicron infection, decreasing from 62% to 30% after 6 months according to evidence in Refs (Carazo et al., 2023; Suarez Castillo et al., 2022). We assumed no decay for infection-induced protection against hospitalization in the period under study, in line with Ref (Stein et al., 2023). Parameter values are summarized in Table S3.

Vaccination and hybrid immunity. We considered vaccination to have an effect against infection, symptomatic infection, hospitalization, and transmission. We used variant-specific estimates of vaccine effectiveness against these outcomes, summarized in Table S4, accounting for evidence of waning in vaccine-induced immunity (Menegale et al., 2023). We modeled waning in vaccine efficacy after a 2nd or a 3rd dose with step-wise decreasing levels of protection, based on the time since injection. We considered 4 steps of waning, i.e. efficacy within 5 weeks, 10 weeks, 15 weeks and afterwards, by adding layers to the compartmental model. Individuals move between layers based on the time since their last injection or when they receive a new dose. The number of new doses is assigned proportionally to the susceptible and recovered compartment (i.e. not depending on the infection history), according to the vaccination rhythm over time by age class observed in France. We

assumed that the 3rd dose is given with priority to the individuals who received the 2nd dose less recently (i.e. 3rd dose is assigned to individuals in the compartment who received the 2nd dose since 15+ weeks). Multiple studies have highlighted that vaccinated individuals with a prior infection have a stronger protection against reinfection with respect to vaccinated-only or infected-only individuals (Altarawneh et al., 2022b; Suarez Castillo et al., 2022). For this reason, we modeled hybrid immunity against infection accounting for the role of prior infection in boosting the protection conferred by the vaccine only. Details are provided in Section 3 in the Supplementary Information.

Booster campaign in France. The booster campaign in France began at the start of September 2021 (Vie-publique.fr, 2021b), with administration of a 3rd dose to seniors (older than 65 years of age) and vulnerable individuals, with a minimum delay of 6 months after injection of the 2nd dose (Haute Autorité de Santé, 2021a), following recommendations provided at the end of August by the French public health agency Haute Autorité de Santé (HAS) (Haute Autorité de Santé, 2021a). Starting November 27, 2021, the booster dose became available for the general adult population (18 years old or older) (France Bleu, 2021), and the recommended inter-dose interval was shortened to 5 months since the receipt of the 2nd dose. The decision of accelerating the booster campaign relied on the recommendation of the Haute Autorité de Santé based on the observed increase in case incidence in early November due to Delta (Haute Autorité de Santé, 2021b), prior to the detection of Omicron in the country (Maisa et al., 2022). The announcement of extending vaccine eligibility came on November 25, 2021 (France Bleu, 2021), just before the declaration of Omicron as variant of concern by WHO (WHO, 2021), after the alert from South Africa about rapidly worsening epidemic indicators since mid-November associated with a new SARS-CoV-2 lineage (Viana et al., 2022). Booster for adolescents became available starting from January 24, 2022 (Service Public, 2022). There were no generalized social distancing restrictions implemented during the booster campaign. Instead, authorities imposed the health pass as preventive measure. The health pass was an individual certificate required to attend public places (such as bars, restaurants, museums, cinemas, sports centers, cinemas, etc.) (Vie-publique.fr, 2021a). The health pass could be obtained either after a two-dose vaccination scheme (vaccination pass), or, in absence of vaccination, with a negative RT-PCR performed in the latest 72 h. On November 9, 2021, to incentivize booster uptake in the senior population, French authorities announced additional constraints to extend the validity of the health pass beyond December 15, that required the receipt of a 3rd dose or a negative RT-PCR in the latest 24 h. Same conditions were applied for the adult population when booster became available, to extend the validity of the health pass beyond January 15, 2022.

Scenarios of booster campaigns. We implemented different booster strategies by varying the rhythm of administration of the 3rd dose. More precisely, we focused on the interval between the receipt of the 2nd and the 3rd dose, as this is the reference quantity that is usually set by public health authorities during a vaccination campaign. We tested booster strategies that distribute the 3rd dose with the same rhythm observed for the 2nd dose, with a fixed delay between 4 months up to 9 months since the 2nd vaccination campaign. This delay represents the effective interval between the 2nd and the 3rd dose, and does not necessarily coincide with the interval envisioned by the policy. We considered vaccination scenarios administering the 3rd dose up to the coverage observed during the realized booster campaign (70% for adults and 84% for seniors). Scenarios in which all individuals with a 2nd dose receive a booster are included in a sensitivity analysis (Fig. S15). We considered booster campaigns starting from September 1, 2021, in the main analysis, and tested a starting date on August 1, 2021, in a sensitivity analysis (Fig. S16). In case of short delays, the excess of individuals promptly eligible for booster at the start of the vaccination campaign is uniformly distributed within the following month. To assess the role of different age groups, for any given delay we tested three possible scenarios where this delay is applied the booster rhythm of (i) the senior age class only, distributing the 3rd dose to adults as observed, (ii) the adult age class only, distributing the 3rd dose to seniors as observed, and (iii) both age classes. In all scenarios, we kept the rhythm of administration of 3rd dose for adolescents as observed. We compared scenarios in terms of size and timing of the weekly peak of hospital admissions as a measure of healthcare burden.

Effect of social distancing. Based on the conditions for contacts and transmissibility fitted on the observed epidemic, we modeled the effect of a one-month social distancing intervention by reducing contact rates by a given percentage, ranging between 5% up to 40%. The starting date of social distancing was fixed based on the French calendar at the start of the week after the end of school holidays (either after Christmas holidays or after the winter break in February depending on the timing of the wave in the scenario under consideration). In a secondary analysis, we varied the date of the implementation of social distancing (Figs. S11 and 12). For each vaccination campaign scenario where we implemented social distancing, we identified the *sufficient* social distancing, i.e. the minimal level of social distancing necessary to obtain a manageable wave, both during Omicron BA.1 and during Omicron BA.2. A manageable wave was defined as an epidemic with a weekly peak of hospitalizations below a threshold, set at the level registered during the first wave (i.e. the highest peak registered in France, approximately 21,000 weekly hospitalizations). In case there exists no reduction in contacts able to keep both epidemic peaks under manageable levels, we consider the most effective social distancing, i.e. the level of social distancing resulting in the lowest peak possible (and we indicate it as *not sufficient* social distancing). We test the effect of a one-time intervention; scenarios with a large epidemic rebound after the lifting of social distancing should not be considered to be realistic, as they would require the implementation of a second measure. We fixed the duration of social distancing interventions at 4 weeks, and we tested different durations in the sensitivity analysis (Fig. S19).

Acceleration of the booster campaign. We tested interventions aimed at reducing the epidemic activity by accelerating the rhythm of vaccination, as an alternative to implementation of social distancing. We modeled this in terms of effective delays between the 2nd and the 3rd dose. Given a scenario of booster campaign with an initial interval of 7 or 8 months, we simulated scenarios in which the interval of administration is shortened to 5 and 6 months starting from a given week. The

excess of individuals who become eligible for the booster when the inter-dose delay is shortened are absorbed within two months by distributing uniformly their number in the period. The duration of two months is chosen so that the vaccination rates remain feasible and do not largely exceed the maximum daily number of administered doses registered during the actual campaign in France (Fig. S14).

3. Results

3.1. SARS-CoV-2 epidemic in the Delta-Omicron period

We used a stochastic age-stratified multi-strain transmission model with vaccination (see Methods) and fitted it to COVID-19 hospital admission data (Fig. 2c) and SARS-CoV-2 genomic surveillance data (Fig. 2d) to reproduce SARS-CoV-2 spread in France since the start of the pandemic. Age groups included children (0–10 years old), adolescents (11–18 years old), adults (19–64 years old) and seniors (65+ years old). We validated model results with serological estimates and age-stratified hospitalizations (Figs. S6 and S7). This analysis focused on the Delta-Omicron phase (September 2021–May 2022), that includes the period of the booster campaign, the Delta wave, and the Omicron BA.1 and BA.2 waves (Fig. 2).

In France, the 2021/2022 winter was characterized by the Delta wave peaking in December 2021, followed by two large epidemic waves, in January and in March respectively, as a result of the spread of Omicron BA.1 and BA.2 (Fig. 2d). The booster campaign started in early September (Fig. 2a), with a gradually increasing coverage in the senior population (Fig. 2b). The booster dose was available for seniors after 6 months from the injection of the 2nd dose, however, the observed rhythm of uptake was initially slower, approximately equal to an effective inter-dose interval of 7 months (Fig. 3a). The vaccination campaign was accelerated in November, in response to the observed increase in epidemic activity due to the Delta variant. First, in mid-November, following changes in the conditions for the validity of the health pass (Methods) and the shortening of the interval for eligibility to 5 months, the uptake rhythm in the senior population increased reaching approximately an effective inter-dose delay of 6 months (Fig. 3a). Then, in late November, booster became available also for the adult population with eligibility conditioned to 5 months since last injection. Consequently, adult vaccination coverage increased until reaching a rhythm of uptake close to an effective inter-dose interval of 6 months (Fig. 3b), i.e. one-month longer with respect to the delay recommended by the policy, similarly to what observed for seniors.

At the start of December, the first cases associated with the Omicron BA.1 variant were detected in the French territory (Maisa et al., 2022). The Omicron strain exhibited a significant growth advantage with respect to Delta, and became dominant by the end of December according to genomic surveillance data (Fig. 2d). Consequently, a rapid increase in hospital admissions was observed at the start of January 2022 despite the acceleration in vaccine administration, reaching a peak similar to the one observed during the 2nd wave in winter 2020 in France (approximately 16,000 weekly hospital admissions). Hospitalizations then started to decrease, in absence of additional social distancing measures or evident behavioral changes (e.g. mobility remained stable, Fig. S4), suggesting an effect of building population immunity. Cases and hospitalizations increased again in March 2022, after Omicron BA.2 became dominant, reaching a second peak of hospitalizations (around 10,000 weekly hospital admissions) in April 2022, similar in size to the third wave in spring 2021 due to the Alpha variant. We estimated that, in absence of Omicron BA.2, and assuming the same conditions on contact rates and population mixing, hospitalizations would have continued to decrease up to May 2022 without rebound effects (Fig. S17).

3.2. Impact of vaccine inter-dose delay

To assess the impact of the timing of the booster dose, we explored alternative vaccination scenarios with different effective inter-dose delays between the receipt of the 2nd and the 3rd dose, ranging from 4 months up to 9 months (Fig. 3a–c). To expose the role of different age groups, we considered scenarios in which we varied the inter-dose delay for seniors and adults separately. We found that changing the timing of the booster administration for seniors only, while vaccinating the adult population as observed, would have had limited impact on the trajectory of hospitalizations (Fig. 3d–g). Adult vaccination instead largely impacted the epidemic trajectory (Fig. 3e and f). In the following, we then focused on scenarios where the timing of the booster dose for adults was changed.

After the extension of booster eligibility in late November, requiring an eligibility interval of at least 5 months, the adopted vaccination rhythm for adults reached an effective delay of approximately 6 months, as shown by the similarity of the 6-month delay trajectory with observations (Fig. 3b). Beyond this reference scenario, we identified two epidemic regimes. In the first regime, a longer inter-dose delay (i.e., 7,8,9 months) would have led to a larger epidemic peak in January (27,000–33,000 weekly hospital admissions instead of 16,000), because of limited vaccination coverage against BA.1 in December (Fig. 3e). In the second regime, a shorter inter-dose delay (4 or 5 months) would have allowed to suppress the BA.1 wave, however leading to an even larger wave in March due to Omicron BA.2, with hospital peak levels two or three times higher than the peak observed during the first wave in 2020 (Fig. 3e). The considerable waning in vaccine protection in individuals vaccinated too early, e.g., in the scenario with 4-month inter-dose delay, would contribute to the larger epidemic in March. Indeed, Fig. S18 shows that, in absence of waning in vaccine effectiveness, the size of the BA.2 wave would have been halved. Similar results were found if both age classes (adults and seniors) were affected by the change in the inter-dose delay (Fig. 3f and g). The two regimes are clearly visible in Fig. 3h.

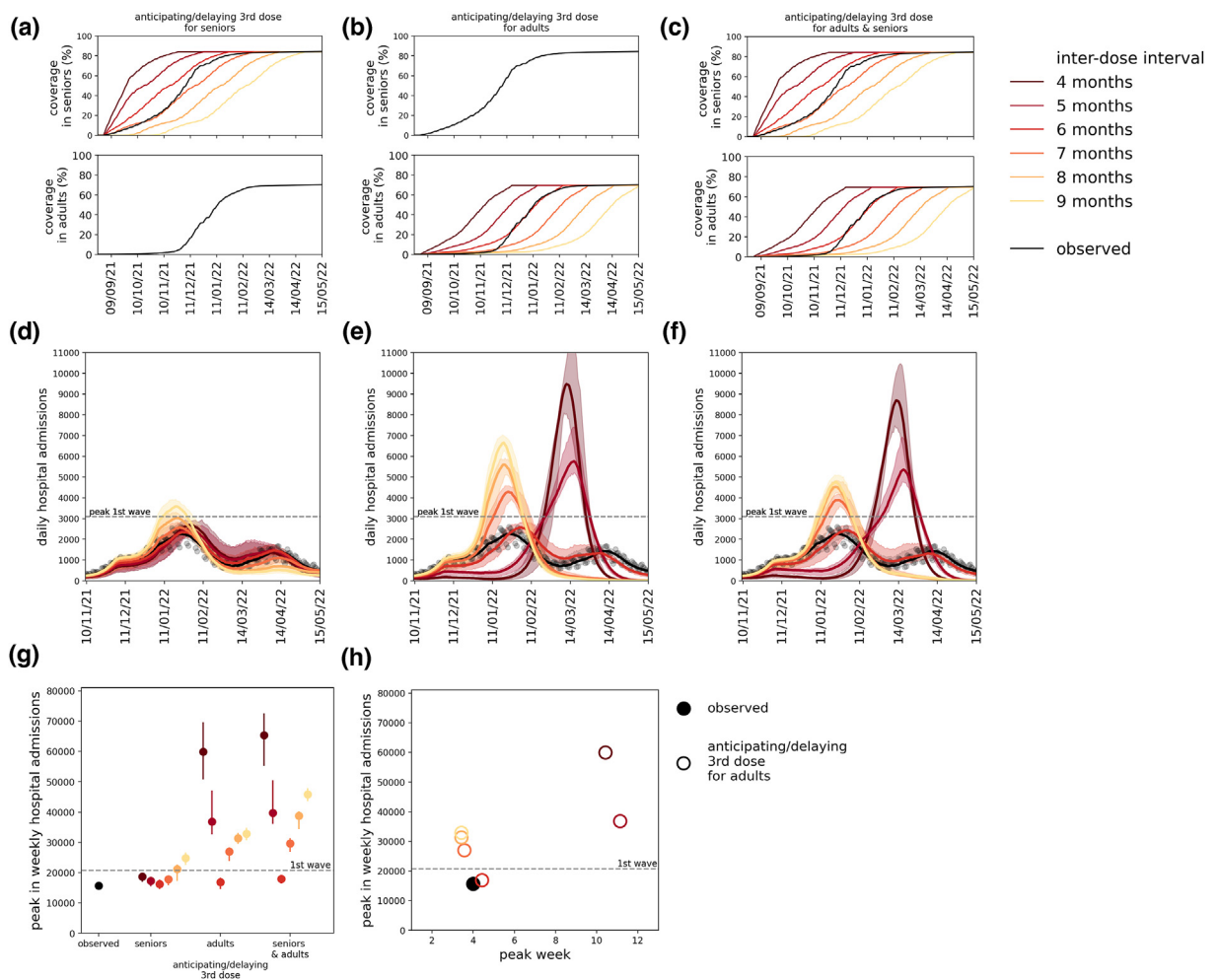


Fig. 3. Scenarios with booster campaigns adopting different inter-dose intervals. (a–c) Vaccination coverage with the booster dose in seniors (top) and adults (bottom) obtained in three alternative vaccination campaign scenarios anticipating or delaying the 3rd dose for seniors only (left), for adults only (center) and for both age classes (right). Black curves represent the observed vaccination pace; colored lines indicate the vaccination coverage obtained with the booster assuming an effective inter-dose interval, ranging from 4 months (darker color) to 9 months (lighter color). (d–f) Epidemic trajectories in terms of daily hospital admissions obtained under the corresponding vaccination scenario shown in panels (a–c). Color code as in panels (a–c); black curve indicates the result of the fit under the observed vaccination campaign. Dots represent the observed data; continuous line and shaded area indicate the output predicted by the model, respectively the median and 95% probability ranges computed over 100 independent stochastic runs. (g) Peak in weekly hospital admissions obtained under alternative vaccination campaign scenario anticipating or delaying the 3rd dose for seniors only, for adults only, and for both age classes. Color code as in panels (a–c). The peak registered during the first wave (horizontal grey line) and during the Omicron wave (black dot) are shown for comparison. Symbols and vertical bars indicate median values and associated 95% probability ranges. (h) As in panel (g), showing peak in weekly hospital admissions as a function of the week in which the peak occurs, for the scenario anticipating/delaying the administration of the 3rd dose to adults only (see Fig. S8 for scenarios applied to seniors only, and to both seniors and adults).

3.3. Impact of one-month social distancing

To evaluate and compare the controllability in terms of non-pharmaceutical interventions for the vaccination scenarios with large epidemic waves, we quantified the level of social distancing needed to contain hospitalizations under manageable levels. We modeled social distancing interventions of increasing stringency by reducing contacts rate for a duration of four weeks in the rising phase of the BA.1 or BA.2 wave (Methods), and evaluated the impact in reducing the peak in hospital admissions. We identified the level of *sufficient social distancing* (Methods), i.e., the minimal level of reduction in social mixing, in order to control the epidemic using as a reference the peak observed during the first wave in 2020 (around 21,000 weekly hospital admissions). As before, we focused on the vaccination scenarios anticipating or delaying the 3rd dose for adults only, while seniors are vaccinated with the observed rhythm.

In the first regime, for an effective 8-month inter-dose delay (Fig. 4a), the larger BA.1 wave in January caused by limited vaccination would have been controlled by a sufficient 15% reduction in social mixing starting at the end of Christmas holidays, lowering the peak from 31,000 to 20,000 weekly hospital admissions (Fig. 4c), while avoiding rebound effects in March

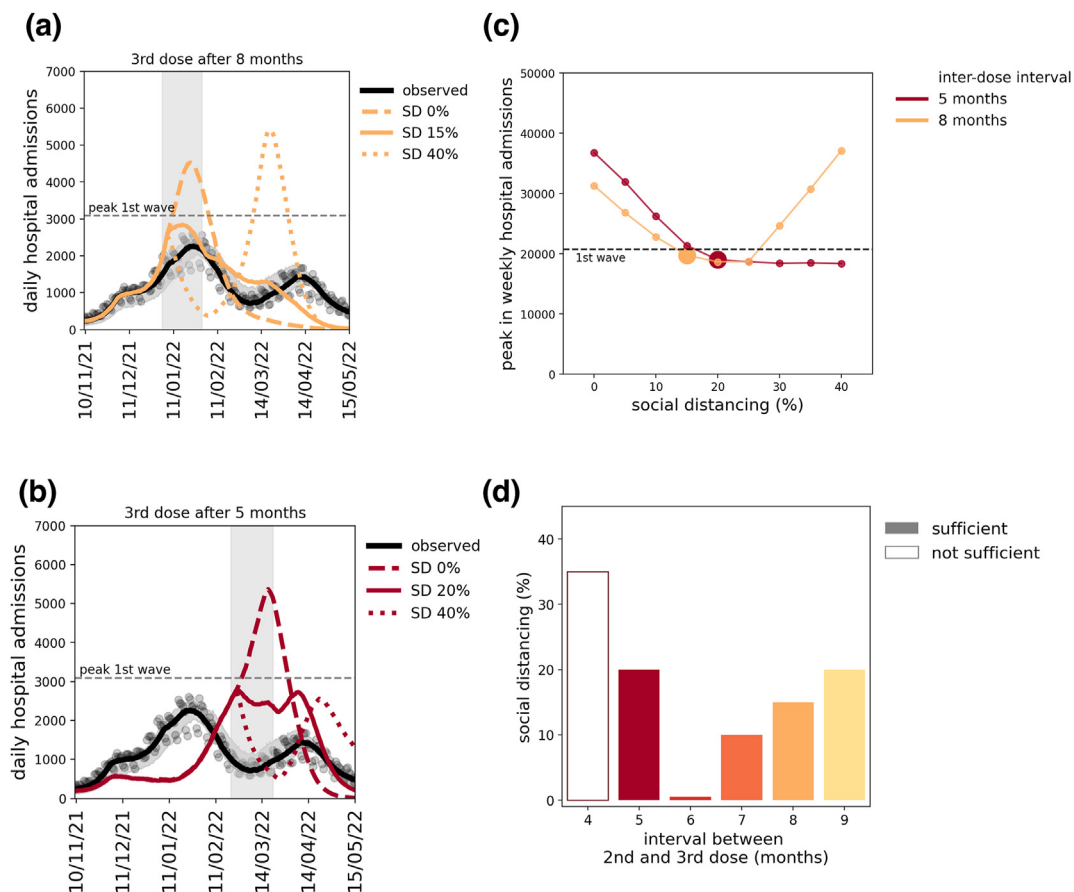


Fig. 4. Impact of one-month social distancing. All panels refer to a vaccination scenario anticipating or delaying the 3rd dose for adults only, while seniors are vaccinated as observed. **(a)** Epidemic trajectories obtained with an effective inter-dose interval of 8 months, assuming no social distancing intervention (dashed line) or a one-month measure reducing contact rates by 15% (*sufficient social distancing*, continuous line) or 40% (dotted line) implemented at the end of Christmas holidays (week 1). Vertical shaded area indicates the period of implementation of the measure. Observed data and fitted trajectory are shown in black for comparison. Continuous colored lines indicate the median trajectory computed over 100 independent stochastic runs. **(b)** As in panel (a), assuming an inter-dose interval of 5 months, with no social distancing intervention (dashed line) or a one-month measure reducing contact rates by 20% (*sufficient social distancing*, continuous line) or 40% (dotted line). One-month social distancing implemented at the end of winter school holidays (week 8). **(c)** Peak in weekly hospital admissions as a function of the level of social distancing implemented. The peak value represents the highest peak among the BA.1 and the BA.2 waves. Horizontal dashed line indicates the peak observed during the first wave, used as a threshold to identify the level of *sufficient social distancing* (larger dots) that allows to keep the epidemic (both BA.1 and BA.2) under a manageable level. Results of panels (a–c) for other inter-dose delays (4,6,7,9 months) are shown in Fig. S9. **(d)** Sufficient social distancing as a function of the inter-dose interval, ranging from 4 months up to 9 months. For the scenarios for which sufficient social distancing was not found (i.e. there wasn't any contact reduction able to bring the peak below the chosen threshold), the plot shows the level of social distancing leading to the lowest peak possible (labeled as *not sufficient*, void bar).

during the Omicron BA.2 wave. Stronger measures would have postponed the BA.2 peak to late March, however such a peak would have been larger if suppression of Omicron BA.1 was too strict (e.g. 37,000 peak in hospital admissions at the end of March in case of 40% contact reduction in January, Fig. 4c) because of rebound effects due to limited natural immunity. In case of vaccination campaigns adopting an inter-dose delay of 7 or 9 months, sufficient social distancing was found to be at 10% or 20% reduction respectively (Fig. 4d).

In the second regime, for an effective 5-month inter-dose delay (Fig. 4b), the higher BA.2 peak in March due to vaccine immunity waning would have required at least 20% reduction of contacts for 1 month at the end of February, to keep the peak of hospitalizations below the threshold of the first wave (Fig. 4c). In case of a vaccination campaign with a 4-month interval, among the interventions considered, the best-case scenario would have been reached with a 35% contact reduction (Fig. 4d), reducing the peak from 60,000 to 27,000 weekly hospital admissions, still 30% higher than the threshold (Fig. S9). The level of sufficient social distancing was found to be more stringent the higher the hospital incidence at the start of the measure (in other words, the later it is implemented during the rising phase of the epidemic wave, Fig. S11 and Fig. S12), and the higher the reproductive number (Fig. S10). Results do not vary considerably if we apply social distancing for a duration of 3 or 5 weeks (Fig. S19).

3.4. Impact of an adaptive vaccination campaign

To evaluate the potential benefit of an adaptive vaccination campaign, we tested the effect of accelerating vaccine administration in response to the unfolding of the epidemic, in absence of social distancing interventions (Fig. 5). We modeled vaccine acceleration by shortening the effective inter-dose delay on a given week after the start of the campaign (Methods). The observed vaccination campaign in France made booster available for the adult population starting from November 27 (end of week 47 of 2021). The observed rhythm approximately corresponded to a scenario accelerating vaccination in week 48 by shortening the effective inter-dose delay from 8 months to 6 months (Fig. 5a), i.e. a change in eligibility from 7 to 5 months of inter-dose delay, given the observed 1-month difference between eligibility and uptake. A similar outcome was obtained assuming that the initial inter-dose delay was effectively 7 months (i.e. 6-month eligibility, Fig. S13), corresponding to opening vaccination for both seniors and adults at the start of September and accelerating at the end of November.

By testing different weeks for the acceleration of the vaccination rhythm, we found that the change in policy should have happened at the latest in week 49 (December 6, 2021), in order to keep the hospitalization peak below the threshold (Fig. 5a), leaving a short period to take action, i.e. approximately 2 weeks after the classification of Omicron as variant of concern (November 26, 2021) (WHO, 2021). Further shortening the inter-dose delay (from 8 to 5 months effective inter-dose delay) would have reduced the time window for the change of policy; if too early (before week 48, Fig. 5b), the BA.2 wave would not have been controlled, because of the waning of the immunity; if too late (after week 50), vaccination would not have been enough to reduce the hospital burden during the BA.1 wave.

4. Discussion

Using a multi-strain age-stratified transmission model accounting for waning in vaccine-induced and natural immunity, we showed that the booster timing adopted in France in preparation for the Delta winter wave in 2021 played a key role in shaping the epidemic in the following months, hitting a delicate balance allowing to control both the Omicron BA.1 and BA.2 waves in January and in March 2022 without requiring additional social distancing. The extension of the eligibility to adults in the general population was key for the control of the successive waves experienced in that winter. The time window for the adjustment of the vaccination program was found to be rather short, of the order of two weeks, highlighting the need for rapid response and readiness.

Different decisions on the timing, anticipating or delaying the start of the booster administration, would have resulted into two different regimes, likely requiring extensive non-pharmaceutical interventions in addition to immunization policies. Not shortening the inter-dose delay or further delaying the booster eligibility would have led to a significant increase in hospitalizations in January 2022 due to Omicron BA.1, requiring a reduction in contact rates of at least 15% for one month to control the peak in hospitalizations. This would have been the result of a late vaccination campaign with respect to the timing of the upcoming wave, therefore not providing sufficient protection to reduce the disease burden in the population. On the other hand, adopting a shorter inter-dose interval would have allowed to fully control the BA.1 wave, at the expense of a larger BA.2 wave later in March 2022, due to waning in vaccine efficacy. The waning in vaccine protection against Omicron infection (Menegale et al., 2023) resulted to be strong enough to produce the BA.2 wave, despite the level of protection against severe

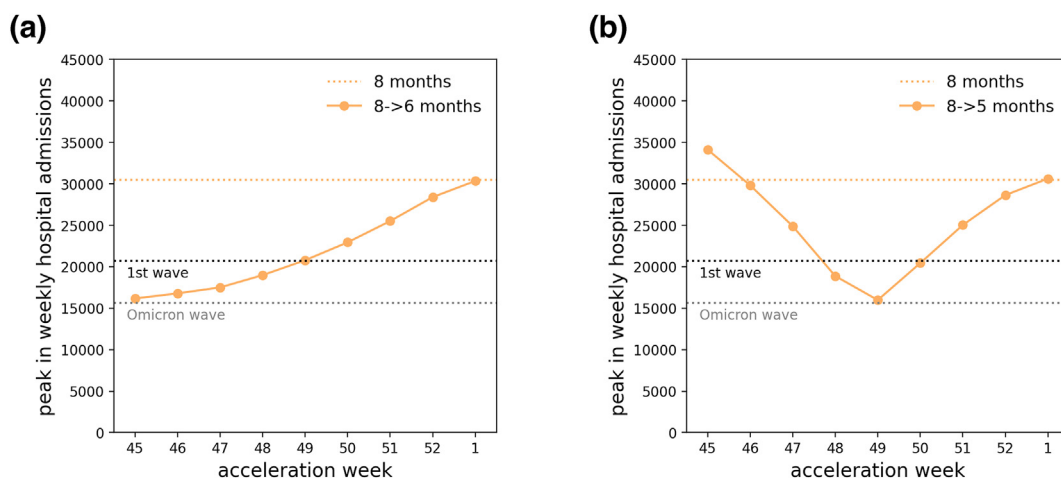


Fig. 5. Impact of an accelerated booster campaign. (a–b) Peak in weekly hospital admissions (y axis) obtained under a vaccination scenario assuming an inter-dose interval of 8 months shortened to 6 months (a) or 5 months (b) on a given week (x axis). Colored dotted line indicates the peak obtained in case of no acceleration in the vaccination campaign (median value over 100 independent stochastic runs); grey dotted line indicates the peak level of the observed Omicron wave; black dotted line indicates the peak of the first wave, used as threshold for identifying the level of sufficient social distancing. The peak value represents the highest peak among the BA.1 and the BA.2 waves.

disease and hospitalization remained high (Amir et al., 2023). Such a wave would have required stronger measures to be contained (at least 20% reduction in contacts) due to the transmission advantage of Omicron BA.2 over BA.1. Even after a large booster campaign, the strong waning in vaccine protection combined with lack of recent natural immunity could rapidly deteriorate the level of immunity in the population, making it vulnerable to potentially new emerging variants. Two years after the emergence of Omicron, this time horizon is now expected to be longer, given the availability of bivalent vaccines (Altarawneh et al., 2022a; Bobrovitz et al., 2023; Lin et al., 2023) (targeted on Omicron BA.4 and BA.5), and a large fraction of the population with experience of a past Omicron infection.

All analyses showed that a large booster coverage extended beyond high-risk groups, with the inclusion of the general adult population, was essential to manage the winter waves, similarly to the findings from other countries (Gavish et al., 2022; Mendes et al., 2023). Despite their reduced risk of developing severe disease with respect to older age classes (Herrera-Esposito & de los Campos, 2022), adults represent a large fraction of the population having high social mixing, therefore they have the potential to contribute importantly to transmission, generating new cases and ultimately increasing the hospital burden overall. In the current context of large viral circulation but lower hospital admissions compared to the first Omicron waves, thanks to widespread population immunity, the WHO recommends booster vaccination for high-risk groups only, in a base-case scenario where the virus continues to evolve but does not become more virulent (WHO, 2023c). Adapting to scenarios where a new emerging variant shows substantial immune escape or transmission advantage (Kelly et al., 2022; Le Rutte et al., 2022) may require revising this policy and extending the vaccination to a larger portion of the population for increased protection. To this end, continuous monitoring of circulating variants through genomic surveillance remains essential (Scott et al., 2021; Tosta et al., 2023). Our case study, however, shows that the time horizon for action could be quite short and it would require sufficient logistics and resources to rapidly accelerate the delivery of the booster.

Other countries followed similar steps in the adaptation of the booster vaccination program in late 2021. In the UK, the interval between the second dose and the booster vaccine was reduced from 6 to 3 months after the emergence of Omicron (GOV.UK, 2022). In mid-November, prior to Omicron, Italy anticipated the date for extension of the age groups eligible for a booster dose with respect to the original plan, and the recommended inter-dose delay was shortened from 6 to 5 months (Ministero della Salute, 2021), similarly to France. Israel was the first country to administer the booster dose, with a campaign opening at the end of July, vaccinating up to 80% of the eligible population (16+ years old) by the end of December 2021 (Gavish et al., 2022), allowing the control of the Delta wave without the need to implement strict social distancing. The epidemic trajectory and first booster campaign in Israel are similar to the scenarios explored here with 4 or 5 months delay, with similar results on the importance of the booster rollout timing (Gavish et al., 2022). The country also administered a second booster dose, during the BA.1 and BA.2 Omicron period, which we do not consider here.

Uptake during the first booster campaign was rather quick and high. In France, we found that the average inter-dose delay was one month longer than allowed by recommendations. This may result from a combination of individual delay in reserving the vaccination appointment and limited availability of doses or administration slots (Franceinfo, 2021). 70% of adults and 85% of seniors had received the booster by May 2022, likely also prompted by the health pass (Oliu-Barton et al., 2022), however reaching a lower coverage than during the primary vaccination cycle (87% and 92% respectively). Willingness to get a booster dose may further lower due to the evolving epidemic context. A survey conducted in France in summer 2022 found that about 3 out of 4 individuals were willing to get a booster dose for the following winter (de Meijere et al., 2023). However, only 9% of adults and 49% of seniors in France received a second booster dose by May 2023 (Santé publique France, 2020c), despite recommendations for one or two shots per year respectively (Haute Autorité de Santé, 2022). In the ongoing 2023/2024 winter, only 30% of seniors have received an additional booster dose as of February 4, 2024 (Santé publique France, 2023a). Effective communication and recommendations incentivizing vaccination are needed to overcome vaccine fatigue (Stamm et al., 2023), maximize booster coverage, and limit the significant hospitalizations that COVID-19 continues to cause.

Our work has a set of limitations. First, alternative vaccination scenarios are built by varying the vaccination rhythm and assuming the same conditions of social contacts and intrinsic transmission rate as estimated by fitting the model to the observed epidemic. We did not model changes in individual preventive behaviors in response to a rising epidemic. Survey data for France show that percentage of participants declaring to wear a mask in public places (Santé publique France, 2020a) increased slightly (from 66% to 73%) in the period between October 2021 and January 2022, i.e. in the rising phase of the Delta-Omicron BA.1 winter wave, and then decreased in February after the peak in hospitalizations. In addition, no interventions on social mixing were in place during that period. Second, we did not vary the timing of emergence of Omicron BA.1 and BA.2 across vaccination scenarios, although the level of immunity at the time of the variant's importation in the country may alter its probability of extinction and affect the moment in which the variant starts to spread steadily in the population. In case the variant emerged at a different moment when population immunity was lower, we expect that our scenarios would require additional social distancing to control the wave. Third, we used an age-stratified transmission model at the national level for mainland France, following prior works (Di Domenico et al., 2021b; 2021c), therefore neglecting local factors. These include spatial differences in variants' penetration (Mazzoli et al., 2021, 2022) and the application of social distancing restrictions in our scenario analyses. We note however that non-pharmaceutical interventions were always applied nationwide in France, with limited exceptions (Sabbatini et al., 2024).

This study highlights the importance of the timing of the booster rollout to limit COVID-19 disease burden resulting from limited immune protection, due to waning effects or the emergence of newly circulating variants with immune escape properties. As we approach a new phase likely characterized by recurrent seasonal waves, our findings can help strategize future routine vaccination programs, where readiness and adaptation remain key.

Software

Code to reproduce the analyses is publicly available at https://github.com/EPIcx-lab/COVID-19/tree/master/Booster_vaccination_campaign.

CRedit authorship contribution statement

Laura Di Domenico: Writing – review & editing, Writing – original draft, Visualization, Software, Methodology, Formal analysis, Conceptualization. **Yair Goldberg:** Writing – review & editing. **Vittoria Colizza:** Writing – review & editing, Writing – original draft, Supervision, Methodology, Funding acquisition, Conceptualization.

Declaration of competing interest

The authors declare that they have no known competing financial interests or personal relationships that could have appeared to influence the work reported in this paper.

Acknowledgments

This study was partially funded by: Agence Nationale de la Recherche project DATAREDEX (ANR-19-CE46-0008-03) to VC; ANRS–Maladies Infectieuses Émergentes project EMERGEN (ANRS0151) to VC; Horizon Europe grant ESCAPE (101095619) to VC; EU HORIZON grant VERDI (101045989); EU Horizon 2020 grant MOOD (H2020-874850) to VC. The study is catalogued as MOOD105. The contents of this publication are the sole responsibility of the authors and don't necessarily reflect the views of the European Commission.

Appendix A. Supplementary data

Supplementary data to this article can be found online at <https://doi.org/10.1016/j.idm.2024.09.002>.

References

- Altarawneh, H. N., Chemaitelly, H., Ayoub, H. H., Hasan, M. R., Coyle, P., Yassine, H. M., Al-Khatib, H. A., Smatti, M. K., Al-Kanaani, Z., Al-Kuwari, E., Jeremijenko, A., Kaleeckal, A. H., Latif, A. N., Shaik, R. M., Abdul-Rahim, H. F., Nasrallah, G. K., Al-Kuwari, M. G., Butt, A. A., Al-Romaihi, H. E., ... Abu-Raddad, L. J. (2022a). Protective effect of previous SARS-CoV-2 infection against omicron BA.4 and BA.5 subvariants. *New England Journal of Medicine*, 387(17), 1620–1622. <https://doi.org/10.1056/NEJMc2209306>
- Altarawneh, H. N., Chemaitelly, H., Ayoub, H. H., Tang, P., Hasan, M. R., Yassine, H. M., Al-Khatib, H. A., Smatti, M. K., Coyle, P., Al-Kanaani, Z., Al-Kuwari, E., Jeremijenko, A., Kaleeckal, A. H., Latif, A. N., Shaik, R. M., Abdul-Rahim, H. F., Nasrallah, G. K., Al-Kuwari, M. G., Butt, A. A., ... Abu-Raddad, L. J. (2022b). Effects of previous infection and vaccination on symptomatic omicron infections. *New England Journal of Medicine*. <https://doi.org/10.1056/NEJMoa2203965>
- Altarawneh, H. N., Chemaitelly, H., Hasan, M. R., Ayoub, H. H., Qassim, S., AlMukdad, S., Coyle, P., Yassine, H. M., Al-Khatib, H. A., Benslimane, F. M., Al-Kanaani, Z., Al-Kuwari, E., Jeremijenko, A., Kaleeckal, A. H., Latif, A. N., Shaik, R. M., Abdul-Rahim, H. F., Nasrallah, G. K., Al-Kuwari, M. G., ... Abu-Raddad, L. J. (2022c). Protection against the omicron variant from previous SARS-CoV-2 infection. *New England Journal of Medicine*. <https://doi.org/10.1056/NEJMc2200133>
- Amir, O., Goldberg, Y., Mandel, M., Bar-On, Y. M., Bodenheimer, O., Freedman, L., Alroy-Preis, S., Ash, N., Huppert, A., & Milo, R. (2023). Protection against Omicron BA.1/BA.2 severe disease 0–7 months after BNT162b2 booster. *Communications Biology*, 6(1), 315. <https://doi.org/10.1038/s42003-023-04669-6>
- Barnard, R. C., Davies, N. G., Jit, M., & Edmunds, W. J. (2022). Modelling the medium-term dynamics of SARS-CoV-2 transmission in England in the Omicron era. *Nature Communications*, 13(1), 4879. <https://doi.org/10.1038/s41467-022-32404-y>
- Barreiro, N. L., Govezensky, T., Ventura, C. I., Núñez, M., Bolcatto, P. G., & Barrio, R. A. (2022). Modelling the interplay of SARS-CoV-2 variants in the United Kingdom. *Scientific Reports*, 12(1), Article 12372. <https://doi.org/10.1038/s41598-022-16147-w>
- Bastard, J., Taisne, B., Figoni, J., Mailles, A., Durand, J., Fayad, M., Josset, L., Maisa, A., Werf, S. van der, Châtelet, I. P. du, & Bernard-Stoecklin, S. (2022). Impact of the omicron variant on SARS-CoV-2 reinfections in France, March 2021 to february 2022. *Euro Surveillance*, 27(13), Article 2200247. <https://doi.org/10.2807/1560-7917.ES.2022.27.13.2200247>
- Béraud, G., Kazmierczak, S., Beutels, P., Levy-Bruhl, D., Lenne, X., Mielcarek, N., Yazdanpanah, Y., Boëlle, P.-Y., Hens, N., & Dervaux, B. (2015). The French connection: The first large population-based contact survey in France relevant for the spread of infectious diseases. *PLoS One*, 10(7), Article e0133203. <https://doi.org/10.1371/journal.pone.0133203>
- Bobrovitz, N., Ware, H., Ma, X., Li, Z., Hosseini, R., Cao, C., Selemon, A., Whelan, M., Premji, Z., Issa, H., Cheng, B., Raddad, L. J. A., Buckeridge, D. L., Kerkhove, M. D. V., Piechotta, V., Higdon, M. M., Wilder-Smith, A., Bergeri, I., Feikin, D. R., ... Subissi, L. (2023). Protective effectiveness of previous SARS-CoV-2 infection and hybrid immunity against the omicron variant and severe disease: A systematic review and meta-regression. *The Lancet Infectious Diseases*. [https://doi.org/10.1016/S1473-3099\(22\)00801-5](https://doi.org/10.1016/S1473-3099(22)00801-5)
- Borremans, B., Gamble, A., Prager, K., Helman, S. K., McClain, A. M., Cox, C., Savage, V., & Lloyd-Smith, J. O. (2020). Quantifying antibody kinetics and RNA detection during early-phase SARS-CoV-2 infection by time since symptom onset. *Elife*, 9, Article e60122. <https://doi.org/10.7554/eLife.60122>
- Bosetti, P., Kiem, C. T., Andronico, A., Paireau, J., Levy-Bruhl, D., Alter, L., Fontanet, A., & Cauchemez, S. (2022). Impact of booster vaccination on the control of COVID-19 Delta wave in the context of waning immunity: Application to France in the winter 2021/22. *Euro Surveillance*, 27(1), Article 2101125. <https://doi.org/10.2807/1560-7917.ES.2022.27.1.2101125>
- Bushman, M., Kahn, R., Taylor, B. P., Lipsitch, M., & Hanage, W. P. (2021). Population impact of SARS-CoV-2 variants with enhanced transmissibility and/or partial immune escape. *Cell*, 184(26), 6229–6242.e18. <https://doi.org/10.1016/j.cell.2021.11.026>
- Carazo, S., Skowronski, D. M., Brisson, M., Barkati, S., Sauvageau, C., Brousseau, N., Gilca, R., Fafard, J., Talbot, D., Ouakki, M., Gilca, V., Carignan, A., Deceuninck, G., De Wals, P., & De Serres, G. (2023). Protection against omicron (B.1.1.529) BA.2 reinfection conferred by primary omicron BA.1 or pre-omicron SARS-CoV-2 infection among health-care workers with and without mRNA vaccination: A test-negative case-control study. *The Lancet Infectious Diseases*, 23(1), 45–55. [https://doi.org/10.1016/S1473-3099\(22\)00578-3](https://doi.org/10.1016/S1473-3099(22)00578-3)

- Chemaitelly, H., Ayoub, H. H., Coyle, P., Tang, P., Yassine, H. M., Al-Khatib, H. A., Smatti, M. K., Hasan, M. R., Al-Kanaani, Z., Al-Kuwari, E., Jeremijenko, A., Kaleeckal, A. H., Latif, A. N., Shaik, R. M., Abdul-Rahim, H. F., Nasrallah, G. K., Al-Kuwari, M. G., Butt, A. A., Al-Romaihi, H. E., ... Abu-Raddad, L. J. (2022). Protection of Omicron sub-lineage infection against reinfection with another Omicron sub-lineage. *Nature Communications*, 13(1), 4675. <https://doi.org/10.1038/s41467-022-32363-4>
- de Meijere, G., Valdano, E., Castellano, C., Debin, M., Kengne-Kuetche, C., Turbelin, C., Noël, H., Weitz, J. S., Paolotti, D., Hermans, L., Hens, N., & Colizza, V. (2023). Attitudes towards booster, testing and isolation, and their impact on COVID-19 response in winter 2022/2023 in France, Belgium, and Italy: A cross-sectional survey and modelling study. *The Lancet Regional Health – Europe*, 28. <https://doi.org/10.1016/j.lanepe.2023.100614>
- Di Domenico, L., Pullano, G., Sabbatini, C. E., Boëlle, P.-Y., & Colizza, V. (2020). Impact of lockdown on COVID-19 epidemic in Ile-de-France and possible exit strategies. *BMC Medicine*, 18(1), 240. <https://doi.org/10.1186/s12916-020-01698-4>
- Di Domenico, L., Pullano, G., Sabbatini, C. E., Boëlle, P.-Y., & Colizza, V. (2021a). Modelling safe protocols for reopening schools during the COVID-19 pandemic in France. *Nature Communications*, 12(1), 1073. <https://doi.org/10.1038/s41467-021-21249-6>
- Di Domenico, L., Sabbatini, C. E., Boëlle, P.-Y., Poletto, C., Crépey, P., Paireau, J., Cauchemez, S., Beck, F., Noel, H., Lévy-Bruhl, D., & Colizza, V. (2021b). Adherence and sustainability of interventions informing optimal control against the COVID-19 pandemic. *Communication and Medicine*, 1(1), 1–13. <https://doi.org/10.1038/s43856-021-00057-5>
- Di Domenico, L., Sabbatini, C. E., Pullano, G., Lévy-Bruhl, D., & Colizza, V. (2021c). Impact of January 2021 curfew measures on SARS-CoV-2 B.1.1.7 circulation in France. *Euro Surveillance*, 26(15), Article 2100272. <https://doi.org/10.2807/1560-7917.ES.2021.26.15.2100272>
- ECDC. (2023). Interim public health considerations for COVID-19 vaccination roll-out during 2023. <https://www.ecdc.europa.eu/en/publications-data/interim-public-health-considerations-covid-19-vaccination-roll-out-during-2023>.
- Bleu, France (2021). Covid-19: Dose de rappel, pass sanitaire, ce qu'il faut retenir des annonces d'Olivier Véran. <https://www.francebleu.fr>. <https://www.francebleu.fr/infos/sante-sciences/direct-covid-19-suivez-l-intervention-d-olivier-veran-1637769888>.
- Franceinfo. (2021). Vaccin contre le Covid-19: Face à l'afflux de demandes, les créneaux pour la dose de rappel ne sont pas encore au rendez-vous. https://www.francetvinfo.fr/sante/maladie/coronavirus/vaccin/vaccin-contre-le-covid-19-face-a-l-afflux-de-demandes-les-creneaux-pour-la-dose-de-rappel-ne-sont-pas-encore-au-rendez-vous_4865531.html.
- French Ministry of Education. (2020a). Calendrier scolaire. <https://www.education.gouv.fr/calendrier-scolaire-100148>.
- French Ministry of Education. (2020b). Déconfinement phase 2: Point de situation au 28 mai. *Ministère de l'Éducation Nationale et de la Jeunesse*. <https://www.education.gouv.fr/deconfinement-phase-2-point-de-situation-au-28-mai-303813>.
- Funk, T., Pharris, A., Spiteri, G., Bundle, N., Melidou, A., Carr, M., Gonzalez, G., Garcia-Leon, A., Crispie, F., O'Connor, L., Murphy, N., Mossong, J., Vergison, A., Wienecke-Baldacchino, A. K., Abdelrahman, T., Riccardo, F., Stefanelli, P., Martino, A. D., Bella, A., ... Groups, on behalf of C. study. (2021). Characteristics of SARS-CoV-2 variants of concern B.1.1.7, B.1.351 or P.1: Data from seven EU/EEA countries. *Euro Surveillance*, 26(16), Article 2100348. <https://doi.org/10.2807/1560-7917.ES.2021.26.16.2100348>.
- Gavish, N., Yaari, R., Huppert, A., & Katriel, G. (2022). Population-level implications of the Israeli booster campaign to curtail COVID-19 resurgence. *Science Translational Medicine*, 14(647), eabn9836. <https://doi.org/10.1126/scitranslmed.abn9836>
- Google. (2020). *Community mobility report*. COVID-19 community mobility report. <https://www.google.com/covid19/mobility?hl=en>.
- GOV.UK. (2022). JCVI statement on the adult COVID-19 booster vaccination programme and the omicron variant: 7 January 2022. <https://www.gov.uk/government/publications/jcvi-statement-on-the-adult-covid-19-booster-vaccination-programme-and-the-omicron-variant/jcvi-statement-on-the-adult-covid-19-booster-vaccination-programme-and-the-omicron-variant-7-january-2022>.
- Haute Autorité de Santé. (2021a). Avis n° 2021.0061/AC/SEESP du 23 août 2021 du collège de la HAS relatif à la définition des populations à cibler par la campagne de rappel vaccinal chez les personnes ayant eu une primovaccination complète contre la Covid-19. https://www.has-sante.fr/jcms/p_3283044/fr/avis-n-2021-0061/ac/seesp-du-23-aout-2021-du-college-de-la-has-relatif-a-la-definition-des-populations-a-cibler-par-la-campagne-de-rappel-vaccinal-chez-les-personnes-ayant-eu-une-primovaccination-complete-contre-la-covid-19.
- Haute Autorité de Santé. (2021b). Covid-19: Un rappel recommandé pour les 18 ans et plus dès 5 mois après la primo-vaccination. <https://www.has-sante.fr/>. https://www.has-sante.fr/jcms/p_3301409/fr/covid-19-un-rappel-recommande-pour-les-18-ans-et-plus-des-5-mois-apres-la-primo-vaccination.
- Haute Autorité de Santé. (2022). Stratégie de vaccination contre la Covid-19 – Anticipation des scénarios possibles à l'automne 2022. https://www.has-sante.fr/jcms/p_3340479/fr/strategie-de-vaccination-contre-la-covid-19-anticipation-des-scenarios-possibles-a-l-automne-2022.
- Herrera-Espósito, D., & de los Campos, G. (2022). Age-specific rate of severe and critical SARS-CoV-2 infections estimated with multi-country seroprevalence studies. *BMC Infectious Diseases*, 22(1), 311. <https://doi.org/10.1186/s12879-022-07262-0>
- Hogan, A. B., Wu, S. L., Toor, J., Olivera Mesa, D., Doohan, P., Watson, O. J., Winskill, P., Charles, G., Barnsley, G., Riley, E. M., Khoury, D. S., Ferguson, N. M., & Ghani, A. C. (2023). Long-term vaccination strategies to mitigate the impact of SARS-CoV-2 transmission: A modelling study. *PLoS Medicine*, 20(11), Article e1004195. <https://doi.org/10.1371/journal.pmed.1004195>
- INSEE. (2020). Estimations de population—Pyramide des âges régionales et départementales. <https://www.insee.fr/fr/statistiques/3696315>.
- Jung, S., Loo, S. L., Howerton, E., Contamin, L., Smith, C. P., Carcelén, E. C., Yan, K., Bents, S. J., Levander, J., Espino, J., Lemaitre, J. C., Sato, K., McKee, C. D., Hill, A. L., Chinazzi, M., Davis, J. T., Mu, K., Vespignani, A., Rosenstrom, E. T., ... Lessler, J. (2023). Potential impact of annual vaccination with reformulated COVID-19 vaccines: Lessons from the U.S. COVID-19 Scenario Modeling Hub. *medRxiv*. <https://doi.org/10.1101/2023.10.26.23297581>, 2023.10.26.23297581.
- Kahn, F., Bonander, C., Moghaddassi, M., Rasmussen, M., Malmqvist, U., Inghammar, M., & Björk, J. (2022). Risk of severe COVID-19 from the Delta and Omicron variants in relation to vaccination status, sex, age and comorbidities – surveillance results from southern Sweden, July 2021 to January 2022. *Euro Surveillance*, 27(9), Article 2200121. <https://doi.org/10.2807/1560-7917.ES.2022.27.9.2200121>
- Kelly, S. L., Le Rutte, E. A., Richter, M., Penny, M. A., & Shattock, A. J. (2022). COVID-19 vaccine booster strategies in light of emerging viral variants: Frequency, timing, and target groups. *Infectious Disease and Therapy*, 11(5), 2045–2061. <https://doi.org/10.1007/s40121-022-00683-z>
- Le Rutte, E. A., Shattock, A. J., Chitnis, N., Kelly, S. L., & Penny, M. A. (2022). Modelling the impact of Omicron and emerging variants on SARS-CoV-2 transmission and public health burden. *Communication and Medicine*, 2(1), 1–7. <https://doi.org/10.1038/s43856-022-00154-z>
- Le Vu, S., Jones, G., Anna, F., Rose, T., Richard, J.-B., Bernard-Stoeklin, S., Goyard, S., Demeret, C., Helynck, O., Escrioni, N., Gransagne, M., Petres, S., Robin, C., Monnet, V., Perrin de Facci, L., Ungeheuer, M.-N., Léon, L., Guillois, Y., Filleul, L., ... Noel, H. (2021). Prevalence of SARS-CoV-2 antibodies in France: Results from nationwide serological surveillance. *Nature Communications*, 12, 3025. <https://doi.org/10.1038/s41467-021-23233-6>
- Lin, D.-Y., Xu, Y., Gu, Y., Zeng, D., Wheeler, B., Young, H., Sunny, S. K., & Moore, Z. (2023). Effectiveness of bivalent boosters against severe omicron infection. *New England Journal of Medicine*, 388(8), 764–766. <https://doi.org/10.1056/NEJMc2215471>
- Maisa, A., Spaccaferri, G., Fournier, L., Schaeffer, J., Deniau, J., Rolland, P., & Coignard, B. (2022). First cases of Omicron in France are exhibiting mild symptoms, November 2021–January 2022. *Infectious Diseases Now*, 52(3), 160–164. <https://doi.org/10.1016/j.idnow.2022.02.003>
- Massonnaud, C. R., Roux, J., Colizza, V., & Crépey, P. (2022). Evaluating COVID-19 booster vaccination strategies in a partially vaccinated population: A modeling study. *Vaccines*, 10(3), 479. <https://doi.org/10.3390/vaccines10030479>
- Mazzoli, M., Domenico, Di, Emergen, L., & Colizza, V. (2021). Early assessment of the Omicron variant's presence and growth rate in regions of France. https://www.epixc-lab.com/uploads/9/6/9/4/9694133/inserm_omicron_frequency_20211222.pdf.
- Mazzoli, M., Domenico, Di, Emergen, L., & Colizza, V. (2022). Assessment of the Omicron BA.2 sub-lineage presence and growth rate in regions of France. https://www.epixc-lab.com/uploads/9/6/9/4/9694133/inserm-covid-19-ba2_frequency-20220215.pdf.
- Mendes, D., Chapman, R., Aruffo, E., Gal, P., Nguyen, J. L., Hamson, L., Di Fusco, M., Czudek, C., & Yang, J. (2023). Public health impact of UK COVID-19 booster vaccination programs during Omicron predominance. *Expert Review of Vaccines*, 22(1), 90–103. <https://doi.org/10.1080/14760584.2023.2158816>
- Menegale, F., Manica, M., Zardini, A., Guzzetta, G., Marziano, V., d'Andrea, V., Trentini, F., Ajelli, M., Poletti, P., & Merler, S. (2023). Evaluation of waning of SARS-CoV-2 vaccine-induced immunity: A systematic review and meta-analysis. *JAMA Network Open*, 6(5), Article e2310650. <https://doi.org/10.1001/jamanetworkopen.2023.10650>

- Ministero della Salute. (2021). Norme, circolari e ordinanze dell'area Covid-19. <https://www.salute.gov.it/portale/nuovocoronavirus/archivioNormativaNuovoCoronavirus.jsp?lingua=italiano&PageNo=16#:text=22/11/2021/20CIRCOLARE/20del/20Ministero/20della/20Salute>.
- Oliu-Barton, M., Pradelski, B. S. R., Woloszko, N., Guetta-Jeanrenaud, L., Aghion, P., Artus, P., Fontanet, A., Martin, P., & Wolff, G. B. (2022). The effect of COVID certificates on vaccine uptake, health outcomes, and the economy. *Nature Communications*, 13(1), 3942. <https://doi.org/10.1038/s41467-022-31394-1>
- Peghin, M., De Martino, M., Fabris, M., Palese, A., Visintini, E., Graziano, E., Gerussi, V., Bontempo, G., D'Aurizio, F., Biasotto, A., Sartor, A., Pipan, C., Marzintotto, S., Curcio, F., Bouza, E., Isola, M., & Tascini, C. (2021). The fall in antibody response to SARS-CoV-2: A longitudinal study of asymptomatic to critically ill patients up to 10 Months after recovery. *Journal of Clinical Microbiology*, 59(11), Article e01138. <https://doi.org/10.1128/JCM.01138-21>, 21.
- Pilz, S., Theiler-Schwetz, V., Trummer, C., Krause, R., & Ioannidis, J. P. A. (2022). SARS-CoV-2 reinfections: Overview of efficacy and duration of natural and hybrid immunity. *Environmental Research*, 209, Article 112911. <https://doi.org/10.1016/j.envres.2022.112911>
- Pullano, G., Di Domenico, L., Sabbatini, C. E., Valdano, E., Turbelin, C., Debin, M., Guerrisi, C., Kengne-Kuetche, C., Souty, C., Hanslik, T., Blanchon, T., Boëlle, P.-Y., Figoni, J., Vaux, S., Campese, C., Bernard-Stoecklin, S., & Colizza, V. (2021). Underdetection of cases of COVID-19 in France threatens epidemic control. *Nature*, 590(7844), 134–139. <https://doi.org/10.1038/s41586-020-03095-6>
- Sabbatini, C. E., Pullano, G., Di Domenico, L., Rubrichi, S., Bansal, S., & Colizza, V. (2024). The impact of spatial connectivity on NPIs effectiveness. *BMC Infectious Diseases*, 24(1), 21. <https://doi.org/10.1186/s12879-023-08900-x>
- Santé publique France. (2020a). CoviPrev: Une enquête pour suivre l'évolution des comportements et de la santé mentale pendant l'épidémie de COVID-19. <https://www.santepubliquefrance.fr/etudes-et-enquetes/coviprev-une-enquete-pour-suivre-l-evolution-des-comportements-et-de-la-sante-mentale-pendant-l-epidemie-de-covid-19>.
- Santé publique France. (2020b). Données hospitalières relatives à l'épidémie de COVID-19. <https://www.data.gouv.fr/fr/datasets/donnees-hospitalieres-relatives-a-lepidemie-de-covid-19/>.
- Santé publique France. (2020c). Données relatives aux personnes vaccinées contre la Covid-19 (VAC-SI). <https://www.data.gouv.fr/fr/datasets/donnees-relatives-aux-personnes-vaccinees-contre-la-covid-19-1/>.
- Santé publique France. (2022). Enquêtes Flash: Évaluation de la circulation des variants du SARS-CoV-2 en France. <https://www.santepubliquefrance.fr/etudes-et-enquetes/enquetes-flash-evaluation-de-la-circulation-des-variants-du-sars-cov-2-en-france>.
- Santé publique France. (2023a). Géodes—indicateurs—Campagne automne 2023. https://geodes.santepubliquefrance.fr/#c=indicateur&f=69&i=vacsi_aut_2023_a.couv_dose&s=2024-S05&t=a01&view=map2.
- Santé publique France. (2023b). Consortium EMERGEN. <https://www.santepubliquefrance.fr/dossiers/coronavirus-covid-19/consortium-emergen>.
- Scott, L., Hsiao, N., Moyo, S., Singh, L., Tegally, H., Dor, G., Maes, P., Pybus, O. G., Kraemer, M. U. G., Semenova, E., Bhatt, S., Flaxman, S., Faria, N. R., & de Oliveira, T. (2021). Track Omicron's spread with molecular data. *Science*, 374(6574), 1454–1455. <https://doi.org/10.1126/science.abn4543>
- Service Public. (2022). Vaccin anti-Covid: La campagne de rappel pour les 12-17 ans s'ouvre à partir du 24 janvier 2022. <https://www.service-public.fr/particuliers/actualites/A15462>.
- Sheikh, A., McMenamin, J., Taylor, B., & Robertson, C. (2021). SARS-CoV-2 Delta VOC in Scotland: Demographics, risk of hospital admission, and vaccine effectiveness. *The Lancet*, 397(10293), 2461–2462. [https://doi.org/10.1016/S0140-6736\(21\)01358-1](https://doi.org/10.1016/S0140-6736(21)01358-1)
- Stamm, T. A., Partheymüller, J., Mosor, E., Ritschl, V., Kritzinger, S., Alunno, A., & Eberl, J.-M. (2023). Determinants of COVID-19 vaccine fatigue. *Nature Medicine*, 1–8. <https://doi.org/10.1038/s41591-023-02282-y>
- Stein, C., Nassereldine, H., Sorensen, R. J. D., Amlag, J. O., Bisignano, C., Byrne, S., Castro, E., Coberly, K., Collins, J. K., Dalos, J., Daoud, F., Deen, A., Gakidou, E., Giles, J. R., Hülland, E. N., Huntley, B. M., Kinzel, K. E., Lozano, R., Mokdad, A. H., ... Lim, S. S. (2023). Past SARS-CoV-2 infection protection against reinfection: A systematic review and meta-analysis. *The Lancet*, 401(10379), 833–842. [https://doi.org/10.1016/S0140-6736\(22\)02465-5](https://doi.org/10.1016/S0140-6736(22)02465-5)
- Suarez Castillo, M., Khaoua, H., & Courtejoie, N. (2022). Vaccine-induced and naturally-acquired protection against Omicron and Delta symptomatic infection and severe COVID-19 outcomes, France, December 2021 to January 2022. *Euro Surveillance*, 27(16), Article 2200250. <https://doi.org/10.2807/1560-7917.ES.2022.27.16.2200250>
- Sun, K., Tempia, S., Kleynhans, J., von Gottberg, A., McMorrough, M. L., Wolter, N., Bhiman, J. N., Moyes, J., Carrim, M., Martinson, N. A., Kahn, K., Lebina, L., du Toit, J. D., Mkhencele, T., Viboud, C., & Cohen, C. (2023). Rapidly shifting immunologic landscape and severity of SARS-CoV-2 in the Omicron era in South Africa. *Nature Communications*, 14(1), 246. <https://doi.org/10.1038/s41467-022-35652-0>
- Tosta, S., Moreno, K., Schuab, G., Fonseca, V., Segovia, F. M. C., Kashima, S., Elias, M. C., Sampaio, S. C., Ciccozzi, M., Alcantara, L. C. J., Slavov, S. N., Lourenço, J., Cella, E., & Giovanetti, M. (2023). Global SARS-CoV-2 genomic surveillance: What we have learned (so far). *Infection, Genetics and Evolution*, 108, Article 105405. <https://doi.org/10.1016/j.meegid.2023.105405>
- Tzamalí, E., Sakkalis, V., Tzedakis, G., Spanakis, E. G., & Tzanakis, N. (2023). Mathematical modeling evaluates how vaccinations affected the course of COVID-19 disease progression. *Vaccines*, 11(4), 722. <https://doi.org/10.3390/vaccines11040722>
- Viana, R., Moyo, S., Amoako, D. G., Tegally, H., Scheepers, C., Althaus, C. L., Anyanegi, U. J., Bester, P. A., Boni, M. F., Chand, M., Choga, W. T., Colquhoun, R., Davids, M., Deforche, K., Doolabh, D., du Plessis, L., Engelbrecht, S., Everatt, J., Giandhari, J., ... de Oliveira, T. (2022). Rapid epidemic expansion of the SARS-CoV-2 Omicron variant in southern Africa. *Nature*, 603(7902), 679–686. <https://doi.org/10.1038/s41586-022-04411-y>
- Vie-publique.fr. (2021a). Loi du 5 août 2021 relative à la gestion de la crise sanitaire. <http://www.vie-publique.fr/loi/280798-loi-5-aout-2021-vaccination-obligatoire-pass-sanitaire-crise-covid-19>.
- Vie-publique.fr. (2021b). Interview de M. Jean Castex, Premier ministre, à RTL le 26 août 2021, sur le protocole sanitaire pour la rentrée scolaire, les vaccinations, la situation économique, la politique de réformes et l'accueil de réfugiés afghans en France. <https://www.vie-publique.fr/discours/281305-castex-26082021-rentree-scolaire-covid-vaccinations-accueil-afghans>.
- Wang, H., Ibuka, Y., & Nakamura, R. (2022). Mixing age and risk groups for accessing COVID-19 vaccines: A modelling study. *BMJ Open*, 12(12), Article e061139. <https://doi.org/10.1136/bmjopen-2022-061139>
- WHO. (2021). Classification of omicron (B.1.1.529): SARS-CoV-2 variant of concern. [https://www.who.int/news/item/26-11-2021-classification-of-omicron-\(b.1.1.529\)-sars-cov-2-variant-of-concern](https://www.who.int/news/item/26-11-2021-classification-of-omicron-(b.1.1.529)-sars-cov-2-variant-of-concern).
- WHO. (2023a). Ending the COVID-19 emergency and transitioning from emergency phase to longer-term disease management: Guidance on calibrating the response, 4 September 2023. <https://www.who.int/publications-detail-redirect/WHO-WHE-SPP-2023.2>.
- WHO. (2023b). Statement on the fifteenth meeting of the IHR (2005) Emergency Committee on the COVID-19 pandemic. [https://www.who.int/news/item/05-05-2023-statement-on-the-fifteenth-meeting-of-the-international-health-regulations-\(2005\)-emergency-committee-regarding-the-coronavirus-disease-\(covid-19\)-pandemic](https://www.who.int/news/item/05-05-2023-statement-on-the-fifteenth-meeting-of-the-international-health-regulations-(2005)-emergency-committee-regarding-the-coronavirus-disease-(covid-19)-pandemic).
- WHO. (2023c). Roadmap on uses of COVID-19 vaccines in the context of Omicron and high population immunity. <https://www.who.int/publications/i/item/WHO-2019-nCoV-Vaccines-SAGE-Prioritization-2023.2>.
- WHO. (2023d). Respiratory infectious diseases on the rise across WHO European Region. <https://www.who.int/europe/news/item/15-12-2023-respiratory-infectious-diseases-on-the-rise-across-who-european-region>.